



MICRO LOG

Company MAI OIL OPERATIONS, INC.
 Well LOUISE #1
 Field CHEYENNE VIEW
 County BARTON
 State KANSAS

Company MAI OIL OPERATIONS, INC.
 Well LOUISE #1
 Field CHEYENNE VIEW
 County BARTON State KANSAS

Location: API #: 15-009-26192-00-00
 1650 FSL & 350' FWL
 SEC 12 TWP 19S RGE 12W
 Permanent Datum GROUND LEVEL Elevation 1822'
 Log Measured From KELLY BUSHING 8' A.G.L.
 Drilling Measured From KELLY BUSHING
 Other Services CDL/CNL/DIL
 Elevation K.B. 1830'
 D.F. 1828
 G.L. 1822

Date	12/20/17
Run Number	TWO
Depth Driller	3480
Depth Logger	3481
Bottom Logged Interval	3479
Top Log Interval	2700
Casing Driller	8 5/8" @ 370
Casing Logger	370
Bit Size	7 7/8"
Type Fluid in Hole	CHEMICAL MUD
Density / Viscosity	9.2/61
pH / Fluid Loss	9.0/9.6
Source of Sample	FLOWLINE
Rm @ Meas. Temp	.80@56
Rmt @ Meas. Temp	.60@56
Rmc @ Meas. Temp	.96@56
Source of Rmf / Rmc	MEASURED
Rm @ BHT	.40@111
Time Circulation Stopped	2 HOURS
Time Logger on Bottom	///
Maximum Recorded Temperature	111F
Equipment Number	4010
Location	HAYS, KANSAS
Recorded By	GUS PFANENSTIEL
Witnessed By	JIM MUSGROVE

<<< Fold Here >>>

All interpretations are opinions based on inferences from electrical or other measurements and we cannot and do not guarantee the accuracy or correctness of any interpretation, and we shall not, except in the case of gross or willful negligence on our part, be liable or responsible for any loss, costs, damages, or expenses incurred or sustained by anyone resulting from any interpretation made by any of our officers, agents or employees. These interpretations are also subject to our general terms and conditions set out in our current Price Schedule.

Comments

THANK YOU FOR USING ELI WIRELINE, HAYS, KS. (785) 628-6395

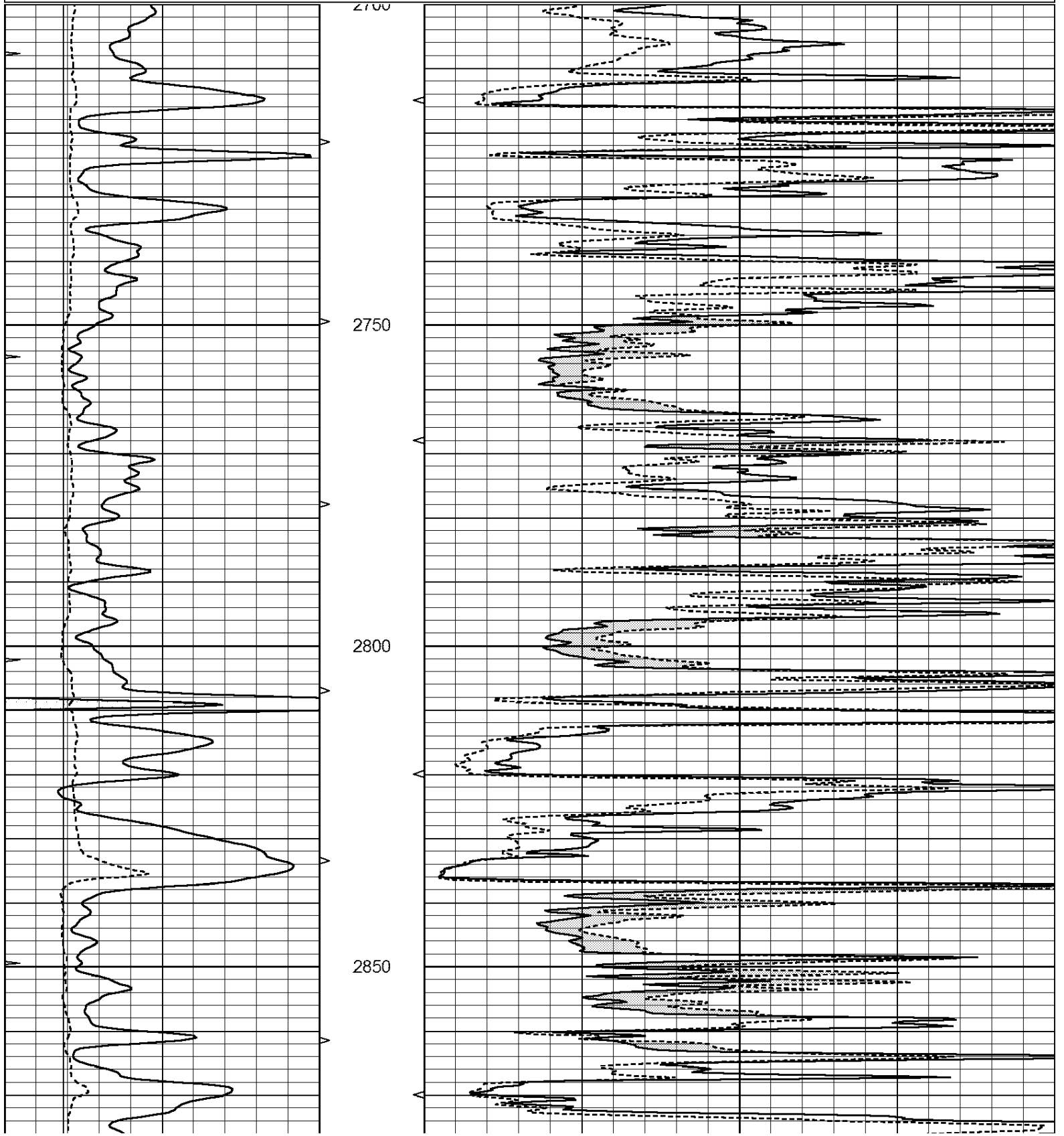
DIRECTIONS
 ELLINWOOD 1 WEST, 3 1/4 NORTH,
 EAST INTO.

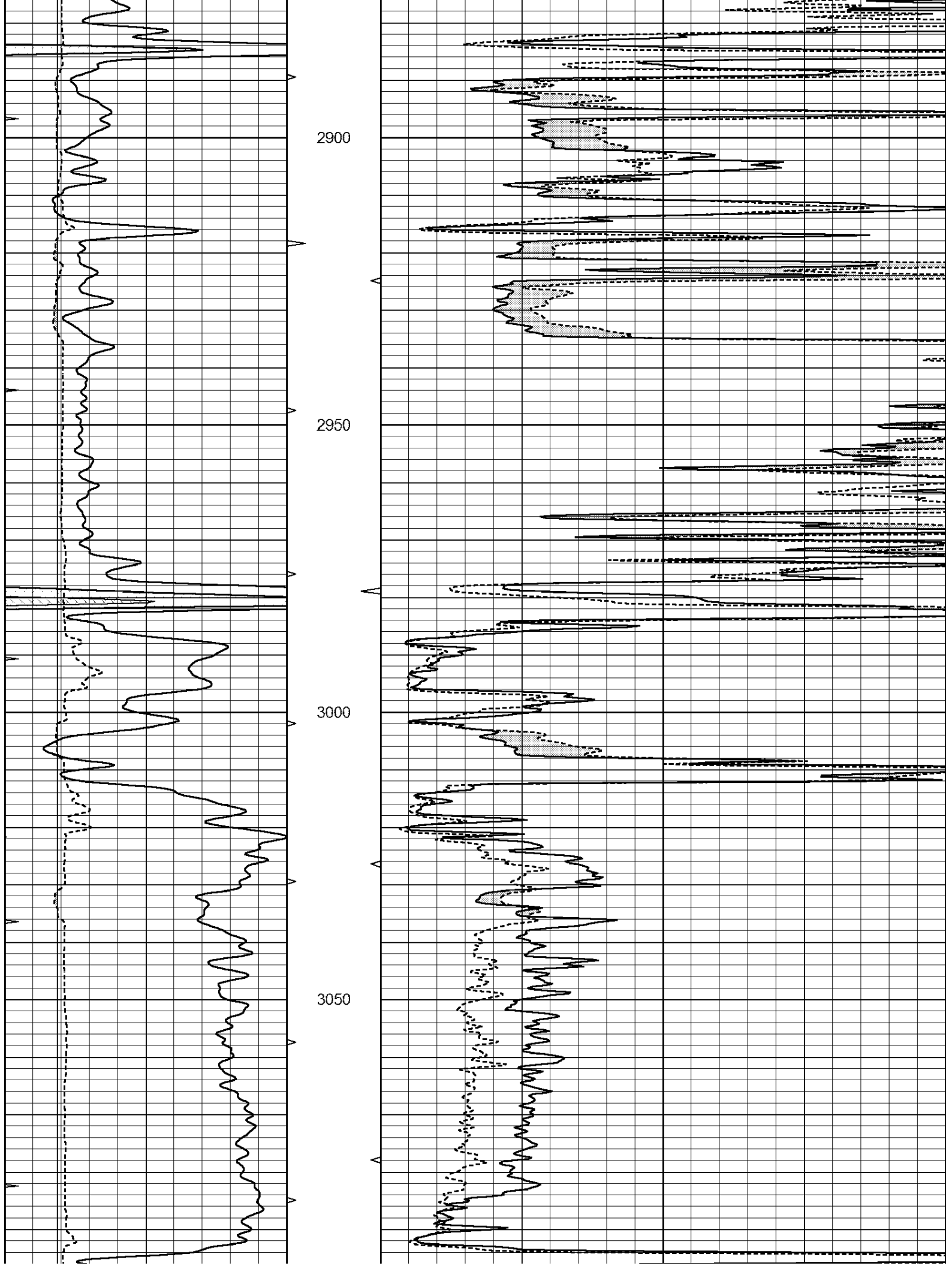


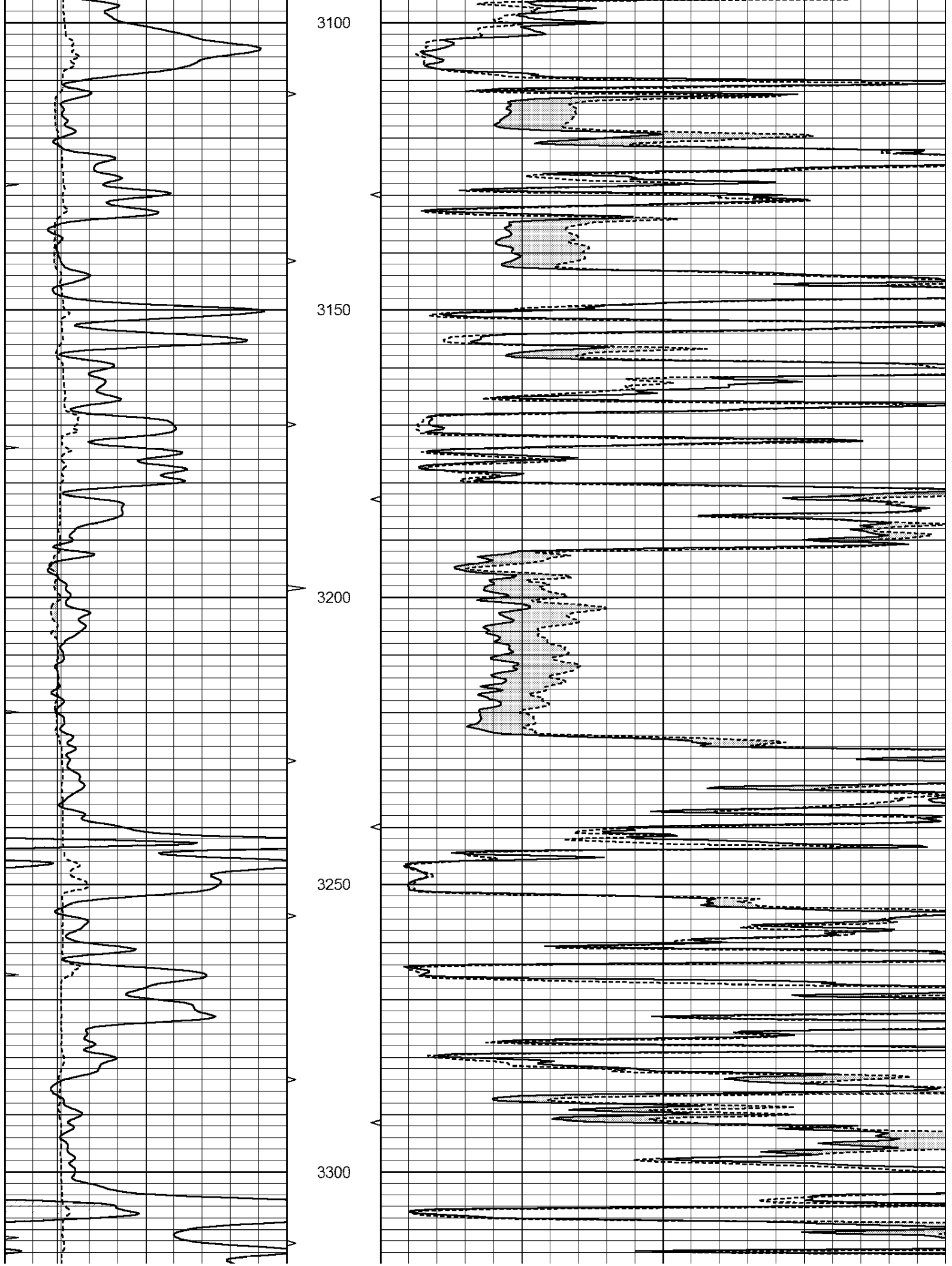
MAIN PASS

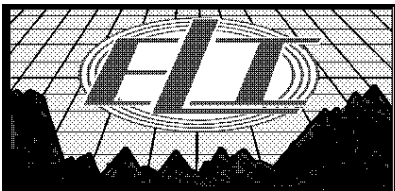
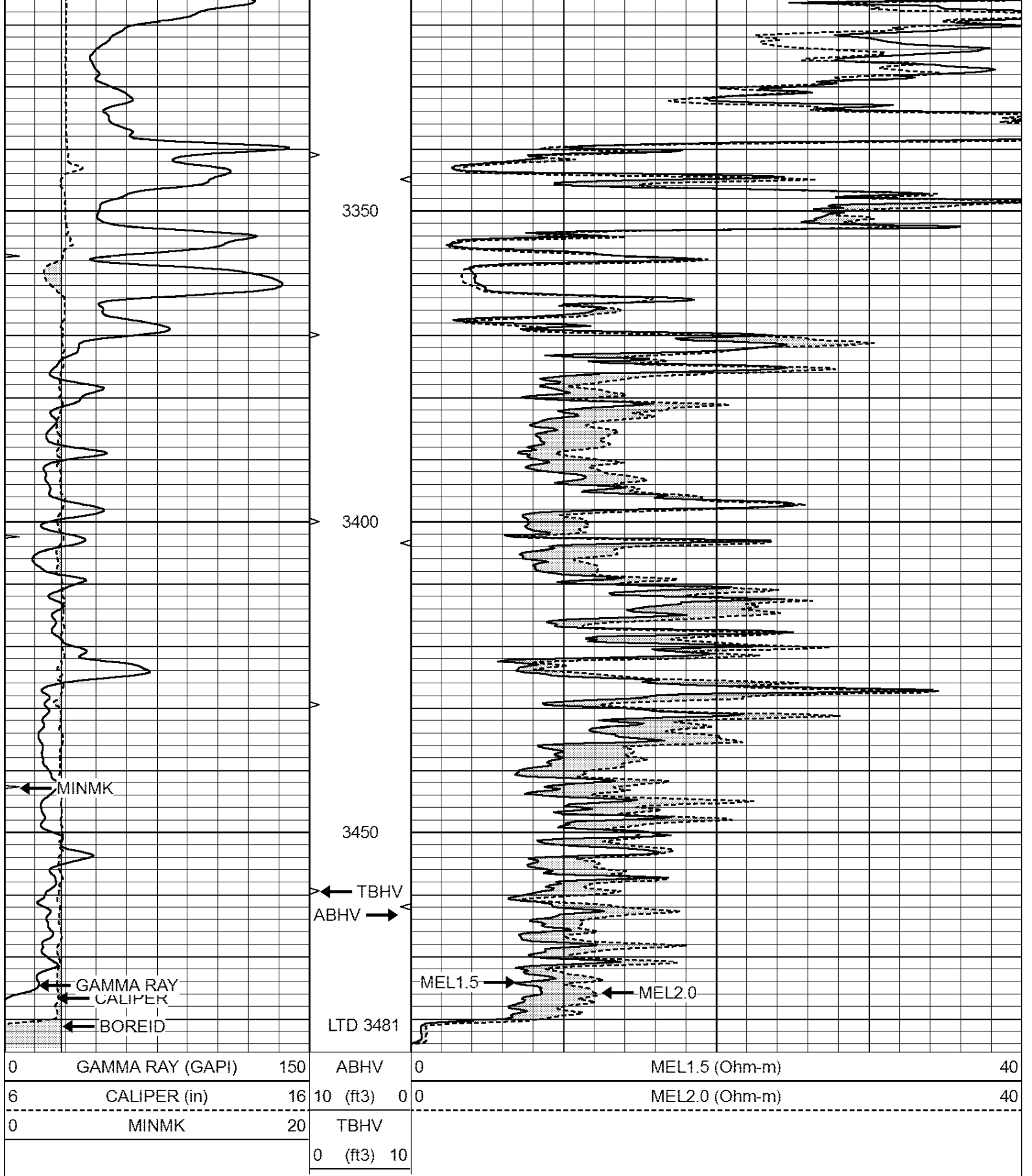
Database File: 2122ddn.db
 Dataset Pathname: pass5
 Presentation Format: _micro
 Dataset Creation: Wed Dec 20 17:39:58 2017 by Log Open-Cased 090629
 Charted by: Depth in Feet scaled 1:240

0	GAMMA RAY (GAPI)	150	ABHV	0	MEL1.5 (Ohm-m)	40
6	CALIPER (in)	16	10 (ft3)	0	MEL2.0 (Ohm-m)	40
0	MINMK	20	TBHV			
			0 (ft3)	10		





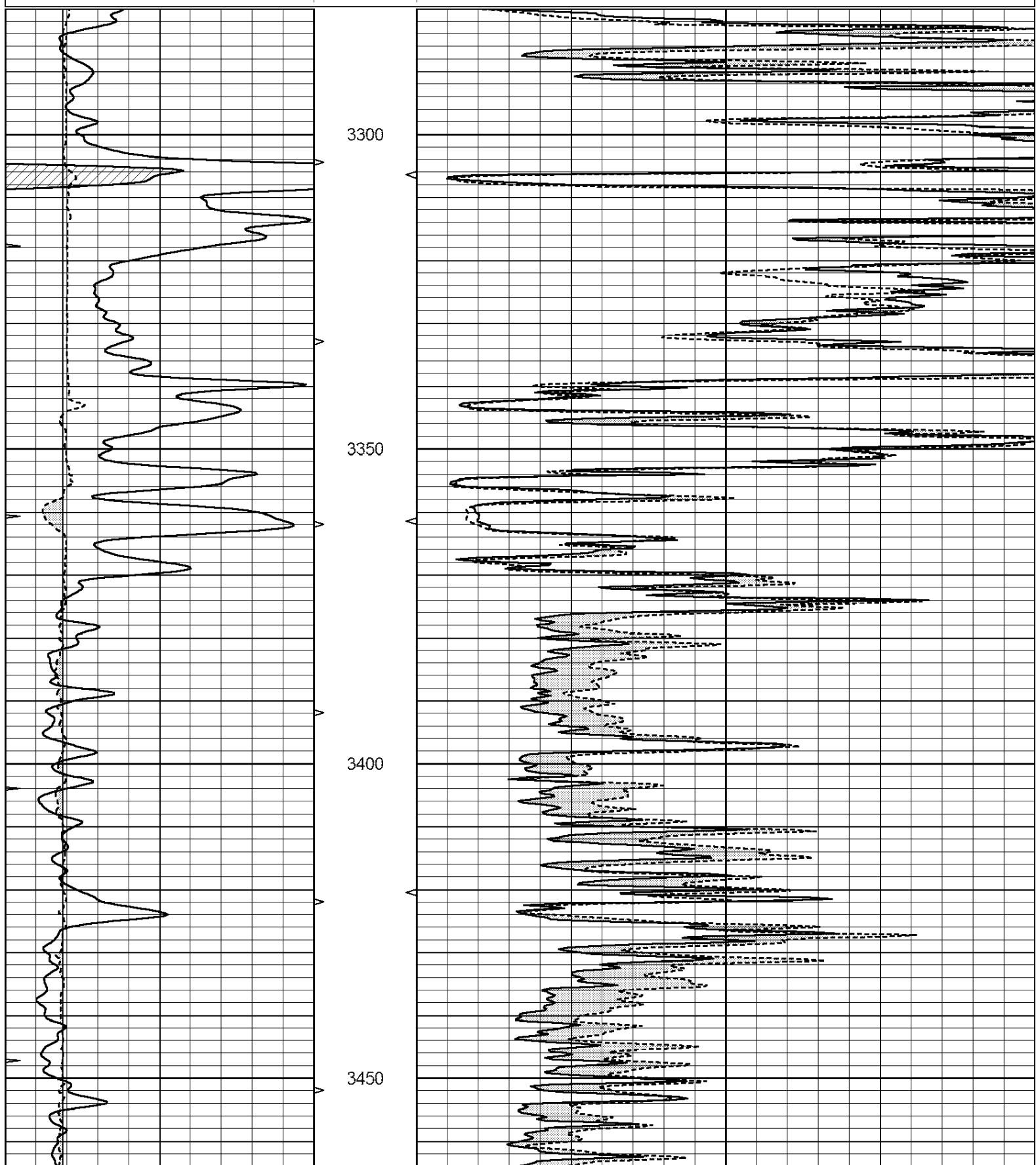


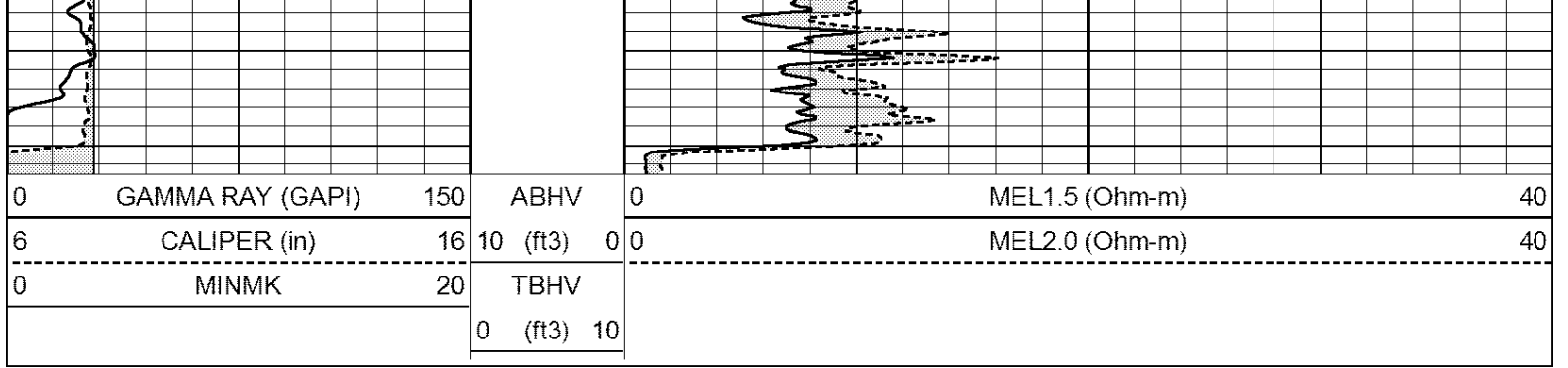


REPEAT SECTION

Dataset Pathname: pass4
 Presentation Format: _micro
 Dataset Creation: Wed Dec 20 17:32:25 2017 by Log Open-Cased 090629
 Charted by: Depth in Feet scaled 1:240

0	GAMMA RAY (GAPI)	150	ABHV	0	MEL1.5 (Ohm-m)	40
6	CALIPER (in)	16	10 (ft3)	0 0	MEL2.0 (Ohm-m)	40
0	MINMK	20	TBHV			
			0 (ft3)	10		





Calibration Report

Database File: 2122ddn.db
 Dataset Pathname: pass4
 Dataset Creation: Wed Dec 20 17:32:25 2017 by Log Open-Cased 090629

MICRO Calibration Report

Serial Number: MICRO6
 Tool Model: PROBE
 Performed: Wed Aug 16 17:13:39 2017

Caliper Calibration: Gain=3.960 Offset=4.551

	Low Cal	High Cal
References	7.000	14.000
Readings	0.555	2.323

1.5" Calibration: Gain=38.075 Offset=-0.400

	Low Cal	High Cal
References	0.000	20.000
Readings	0.004	1.196

2" Calibration: Gain=50.000 Offset=-1.000

	Low Cal	High Cal
References	0.000	20.000
Readings	0.006	0.913

Gamma Ray Calibration Report

Serial Number: GR2
 Tool Model: OPEN
 Performed: Wed Aug 16 17:13:40 2017

Calibrator Value: 1.0 GAPI

Background Reading: 0.0 cps
 Calibrator Reading: 1.0 cps

Sensitivity: 0.3800 GAPI/cps