

GEOLOGICAL REPORT

WellSight Systems

Scale 1:240 (5"=100') Imperial
Measured Depth Log

Well Name: HAMMER D V4-8
Location: SECTION 8-T33S-6E
License Number: API:15-035-24681
Spud Date: 11/27/2017
Surface Coordinates: 660' FEL 660' FNL

Region: COWLEY CO, KS
Drilling Completed: 12/5/2017

Bottom Hole
Coordinates:
Ground Elevation (ft): 1342 K.B. Elevation (ft): 1351
Logged Interval (ft): 1800 To: RTD Total Depth (ft): 3446
Formation: MISS
Type of Drilling Fluid: MUD/CHEM DISPLACED @ 1700'

Printed by MUD.LOG from WellSight Systems 1-800-447-1534 www.WellSight.com

OPERATOR

Company: VAL ENERGY, INC
Address: 125 N. Market Ste. 1110
Wichita, Kansas 67202

GEOLOGIST

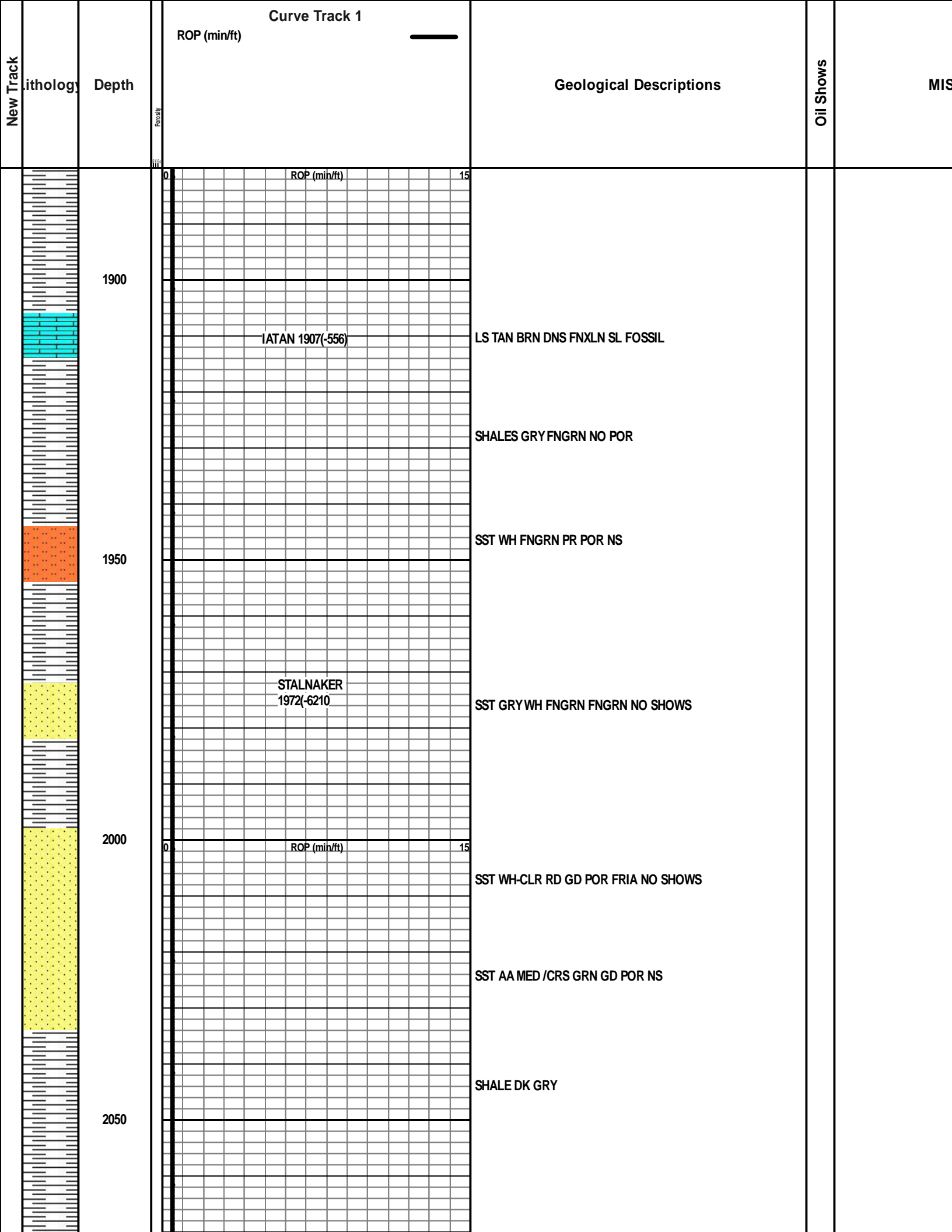
Name: JOE M.BAKER
Company: Mako Operating Co., LLC
Address: P.O BOX 931
ANDOVER KANSAS 67002
316-253-9696

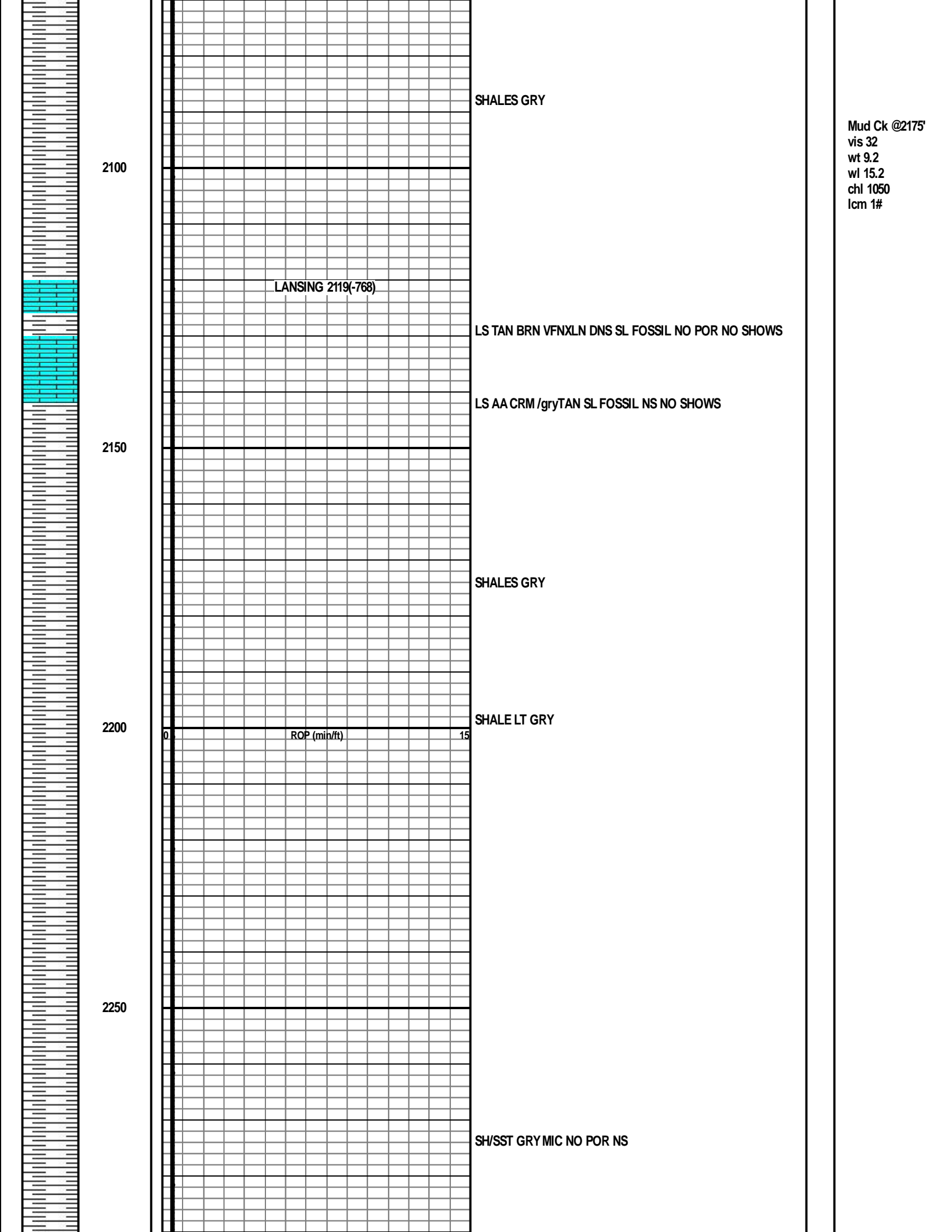
E-Log Tops

IATAN	1907(-556)
STALNAKER	1972(-621)
IOLA LM	2314(-963)
LAYTON SD	2372(-1021)
KANSAS CITY LIME	2532(-1181)
MARMATON /ALTAMONT	2728(-1377)
PAWNEE	2795(-1444)
FT. SCOTT	2832(-1481)
CHEROKEE SH	2856(-1505)
MISS CHERT	3129(-1778)
MISS LIME	3140(-1789)
KINDERHOOK	Not Penetrated
ARBUCKLE	Not Penetrated
RTD	3446(-2095)
LTD	3445(-2094)

Comments

Drilled well w/aPDC bit.Caught kelly down wet & dry samples from 1800'-2800'.10' wet & dry samples from 2800-RTD.Tucker Energy Services logged well @ RTD
Casing was set @ 3445'w/140 sxs.





Mud Ck @2175'
vis 32
wt 9.2
wl 15.2
chl 1050
lcm 1#

2300

IOLA 2314(-963)

LS GRY/CRM FNXLN SL FOSSIL NS

2350

SLST GRY FNGRN NO POR NS

LAYTON SS
(2372-1021)

SST FNGRN MIC POR INTERGRAN POR NO SHOWS

2400

ROP (min/ft) 0 15

SS FN GRN MIC POR POR NS

SST WH MED/CRS GRN GD PR NS

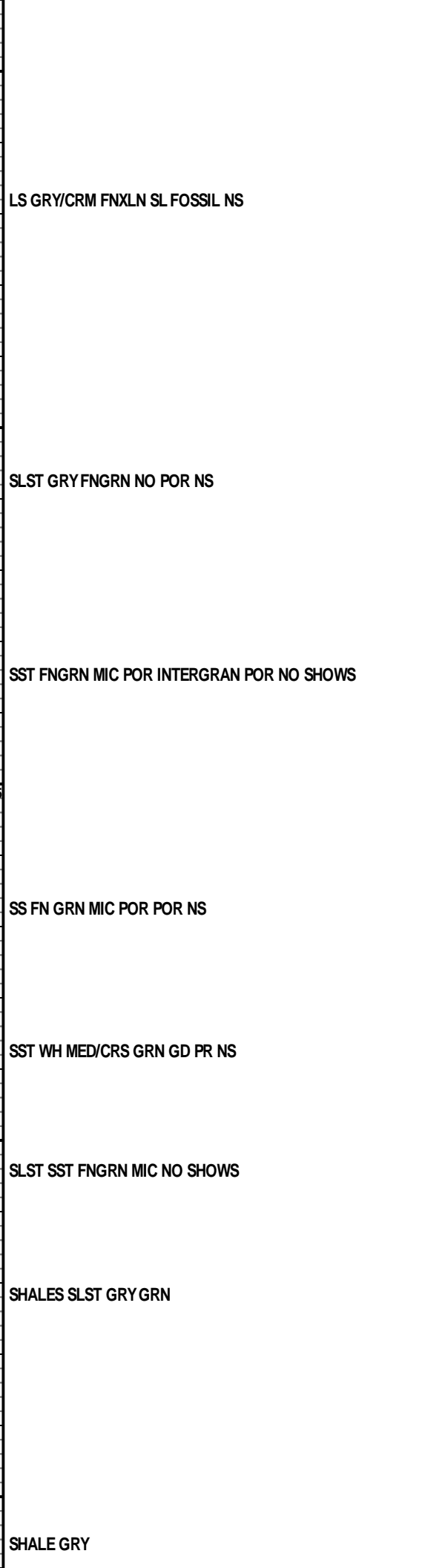
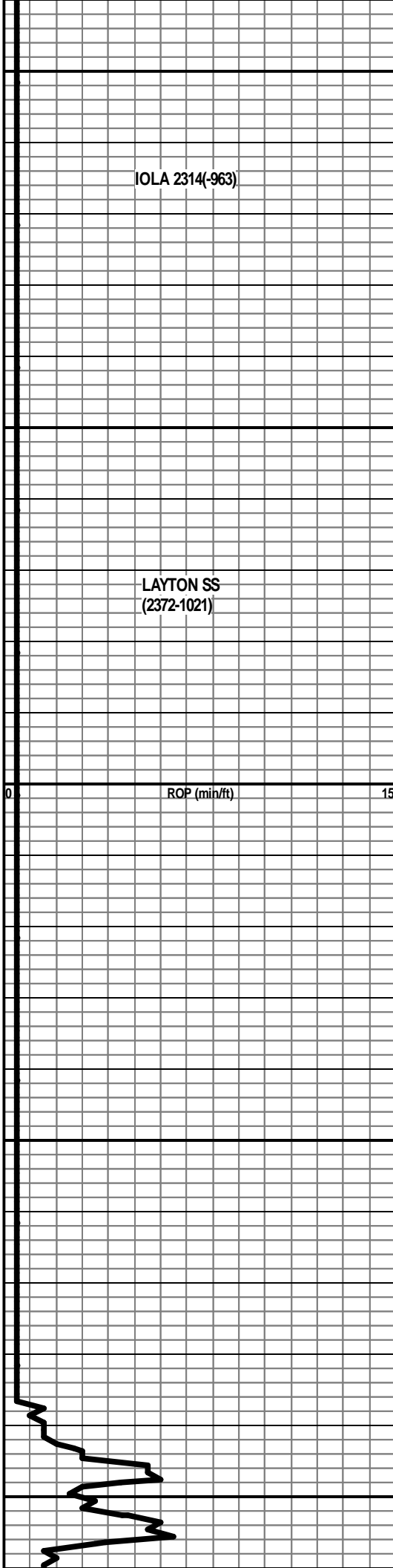
2450

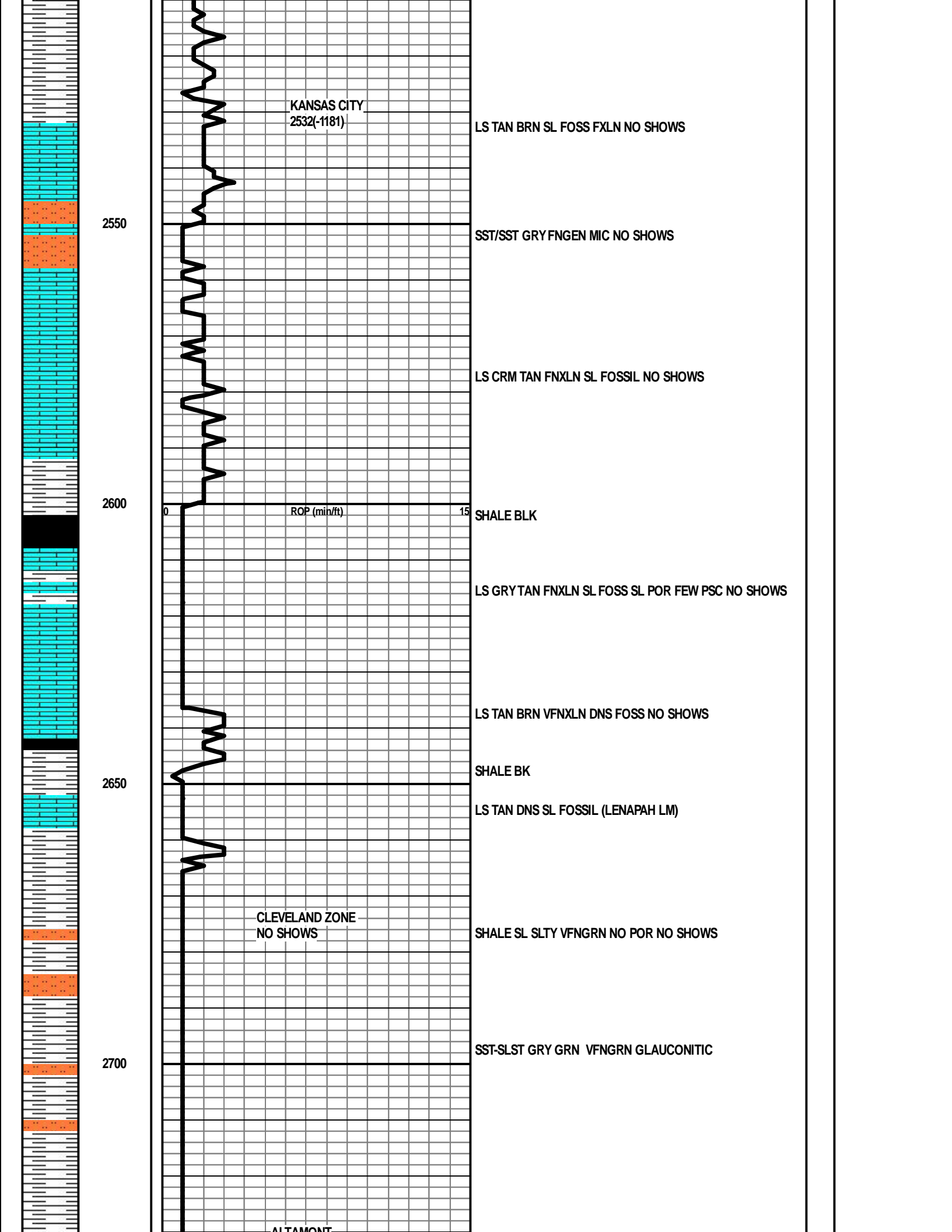
SLST SST FNGRN MIC NO SHOWS

SHALES SLST GRY GRN

2500

SHALE GRY





KANSAS CITY
2532(-1181)

2550

LS TAN BRN SL FOSS FXLN NO SHOWS

SST/SST GRY FNGEN MIC NO SHOWS

LS CRM TAN FNXLN SL FOSSIL NO SHOWS

2600

ROP (min/ft)

SHALE BLK

LS GRY TAN FNXLN SL FOSS SL POR FEW PSC NO SHOWS

LS TAN BRN VFNLN DNS FOSS NO SHOWS

2650

SHALE BK

LS TAN DNS SL FOSSIL (LENAPAH LM)

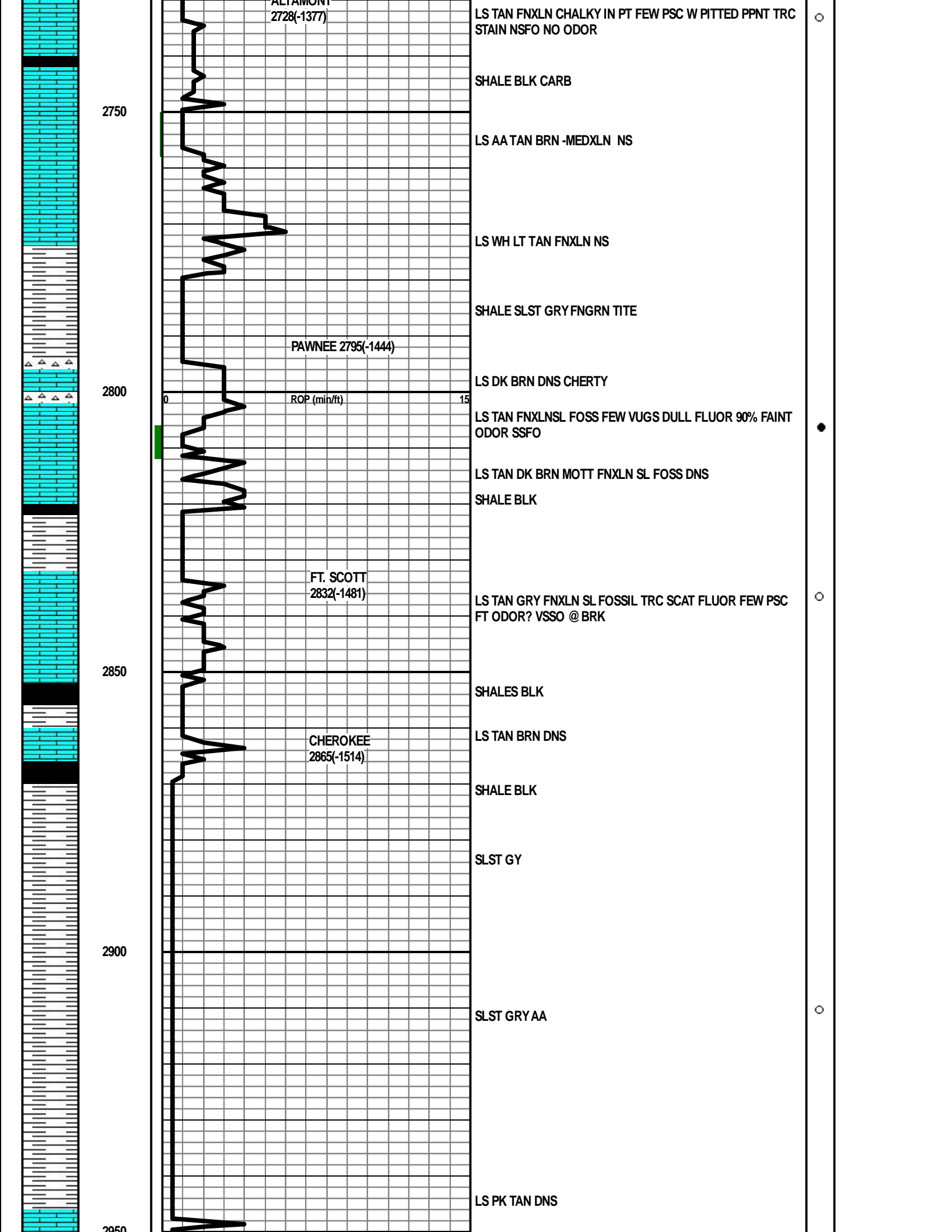
CLEVELAND ZONE
NO SHOWS

SHALE SL SLTY VFNGRN NO POR NO SHOWS

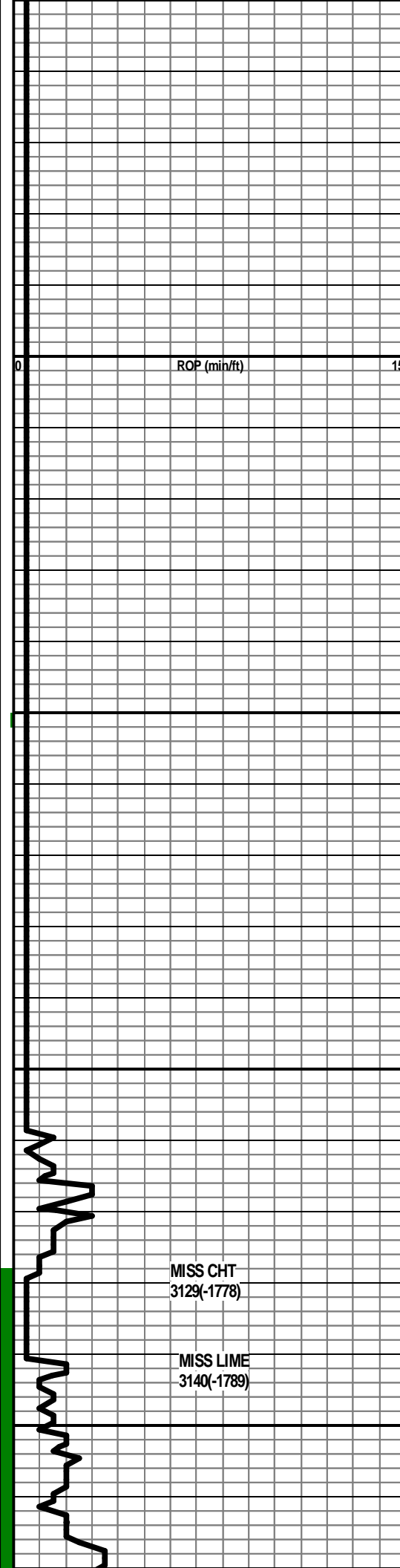
2700

SST-SLST GRY GRN VFNGRN GLAUCONITIC

ALTAMONT



2550
3000
3050
3100
3150



SHALE BLK

SHALE GRY VFNGRN MIC

SHALES SLT GRY NS

SST SLST GRY MIC FGRN NO SHOWS

CHERTS VARICOL ,SHALE GRY ED FEW PSC LS NS

CHERT WH/FOSS DEVIT, SCAT POR @ EDGES MOSTLY DNS
FRESH SCAT FLUOR SLIGHT ODOR SSFO, GAS BUBBS,
FLUOR SCAT DK BRN STAIN

LS TAN BRN CHERTY FNXLN DOLOMITIC/CHALKY IN PT
FOSS FLUOR 10% WEAK FLEETING ODOR SSFO

LS TAN BRN CHALKY FNXLN SL FOSSIL FEW PSCS W/ FLUOR
SSFO ? ODOR

MISS CHT
3129(-1778)

MISS LIME
3140(-1789)

● ODOR
● ODOR
○ FT ODOR
○ FT ODOR

3200

ROP (min/ft)

LS DK BRN FNXLN DNS NO POR NS

LS AA DK BRN DNS MICROXLN

LS TAN/CRM SL MOTT FNXLN SL INTERXLN SSO @ BRK NO ODOR

LS TAN/DK BRN VFNLN DNS/MICROLN NO VIS SHOWS

LS AA DK BRN DNS MICROXLN NO POR NS

3250

LS TAN FNXLN NO POR NS ABUND SHALES GRY/ RED

SHALES VARICOL GRY/GRN RED BIT TRIP?
ABUND PYRITE

BIT TRIP @ 3281'

POOR SAMPLE ALL SHALE/BIT TRIP

3300

LS DK BRN DNS MICROLN NO POR NS

LS LT TAN /GRY MOT FNXLN POOR INTERXLN POR NO VIS SHOWS

LS DK BRN DNS MICROXLN VY HD NO POR NS

3350

BIT TRIP @3348'

LS TAN BRN/WH MOT VFNLN DNS NO POR NS ABUND SHALES GRY/MAR POOR SAMPLES

LS TAN BRN DNS NO POR NS ABUND SHALES GRY/RED

3400

0

ROP (min/ft)

15

LS DK BRN MICROLN VERY DNS SHARP

BIT TRIP @ 3407

LS AA DK BRN DNS MICROLN NO POR NS BUBBS AT BRK /
CHERT ORANGE DNS FRESH

LS DK BRN BRIT BUBBS IN SAMPLE CUP & @ BRK NSFO NO
ODOR NO FLUOR

CFS & LOG @ 3446'

3450

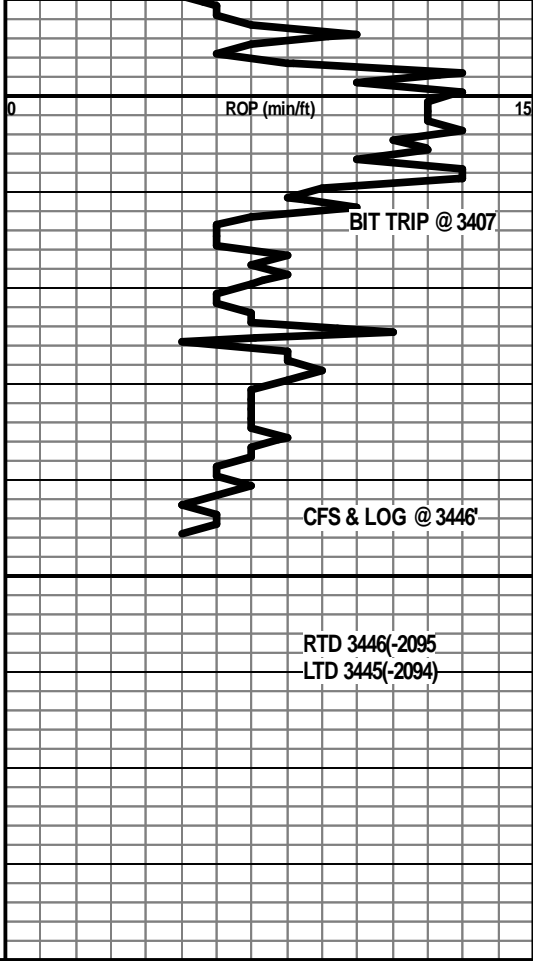
RTD 3446(-2095)

LTD 3445(-2094)

MUD CK@3407
VIS 38
WT 9.3
WL 9.6
LCM 3#

○

○



LS DK BRN MICROLN VERY DNS SHARP

LS AA DK BRN DNS MICROLN NO POR NS BUBBS AT BRK /
CHERT ORANGE DNS FRESH

LS DK BRN BRIT BUBBS IN SAMPLE CUP & @ BRK NSFO NO
ODOR NO FLUOR



MUD CK@3407
VIS 38
WT 9.3
WL 9.6
LCM 3#