



# MICRO LOG

Company SIROKY OIL MANAGEMENT, INC.  
 Well STULL #1  
 Field IUKA-CARMI  
 County PRATT  
 State KANSAS

Company SIROKY OIL MANAGEMENT, INC.  
 Well STULL #1  
 Field IUKA-CARMI  
 County PRATT  
 State KANSAS

Location: API # : 15-151-22464-00-00  
 330 FNL & 2310' FEL  
 SEC 21 TWP 27S RGE 12W  
 Permanent Datum GROUND LEVEL Elevation 1842'  
 Log Measured From KELLY BUSHING 12' A.G.L.  
 Drilling Measured From KELLY BUSHING  
 Other Services CDL/CNL DIL  
 Elevation K.B. 1854'  
 D.F. 1852  
 G.L. 1842

Date	10/16/17
Run Number	TWO
Depth Driller	4555
Depth Logger	4557
Bottom Logged Interval	4555
Top Log Interval	2600
Casing Driller	10 3/4" @ 339
Casing Logger	339
Bit Size	7 7/8"
Type Fluid in Hole	CHEMICAL MUD
Density / Viscosity	9.2/57
pH / Fluid Loss	11.0/10.4
Source of Sample	FLOWLINE
Rm @ Meas. Temp	.60@58
Rmt @ Meas. Temp	.45@58
Rmc @ Meas. Temp	.72@58
Source of Rmf / Rmc	MEASURED
Rm @ BHT	28@121
Time Circulation Stopped	2 HOURS
Time Logger on Bottom	///
Maximum Recorded Temperature	121F
Equipment Number	4010
Location	HAYS, KANSAS
Recorded By	GUS PFANENSTIEL
Witnessed By	PATRICK DEENIHAN

<<< Fold Here >>>

All interpretations are opinions based on inferences from electrical or other measurements and we cannot and do not guarantee the accuracy or correctness of any interpretation, and we shall not, except in the case of gross or willful negligence on our part, be liable or responsible for any loss, costs, damages, or expenses incurred or sustained by anyone resulting from any interpretation made by any of our officers, agents or employees. These interpretations are also subject to our general terms and conditions set out in our current Price Schedule.

### Comments

THANK YOU FOR USING ELI WIRELINE, HAYS, KS. (785) 628-6395

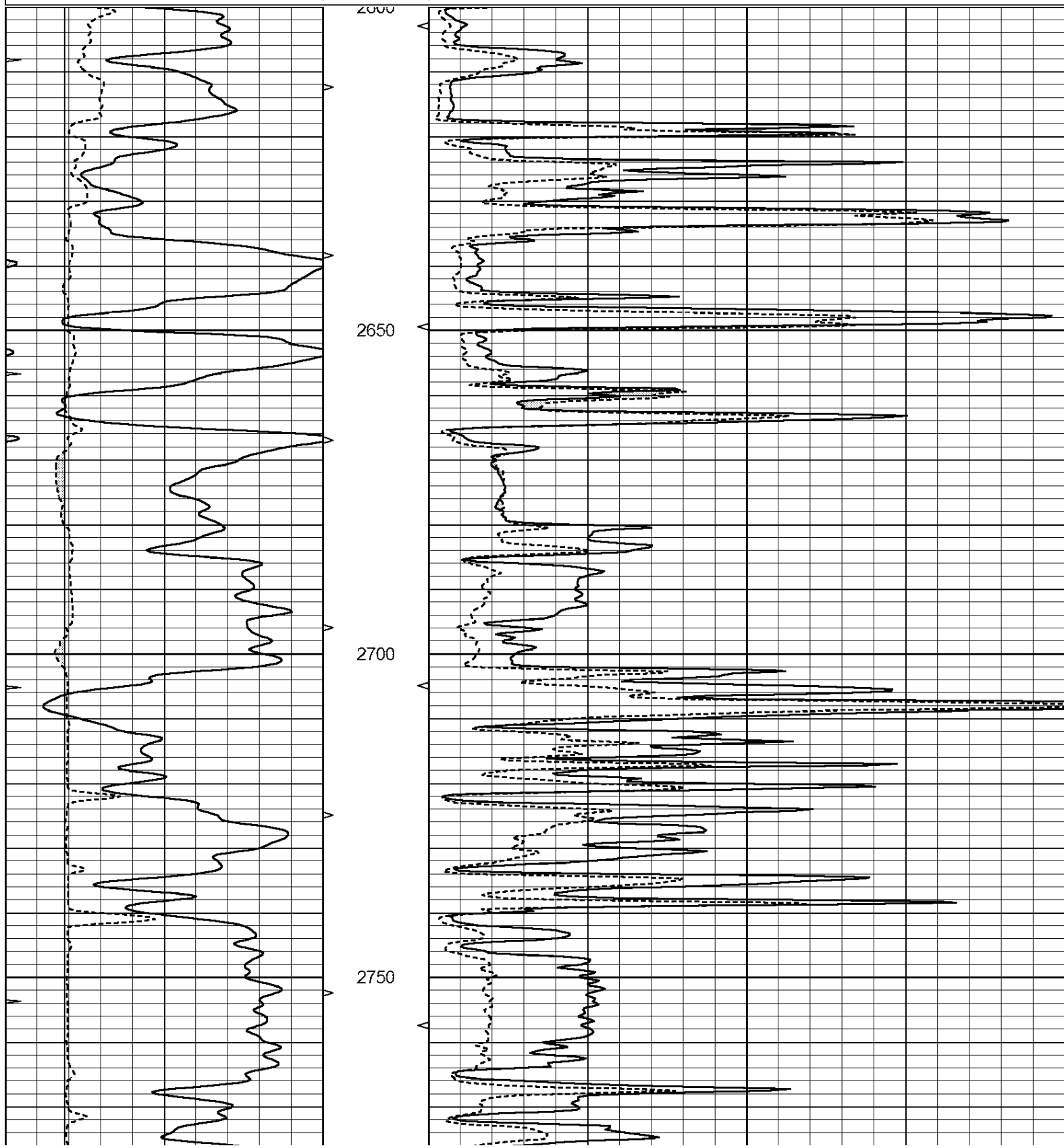
DIRECTIONS  
 PRATT NORTH ON HIGHWAY 61 TO RD. 20,  
 EAST TO THE T. NORTH 1 MILE, EAST 3/4 MILE,  
 SOUTH INTO.

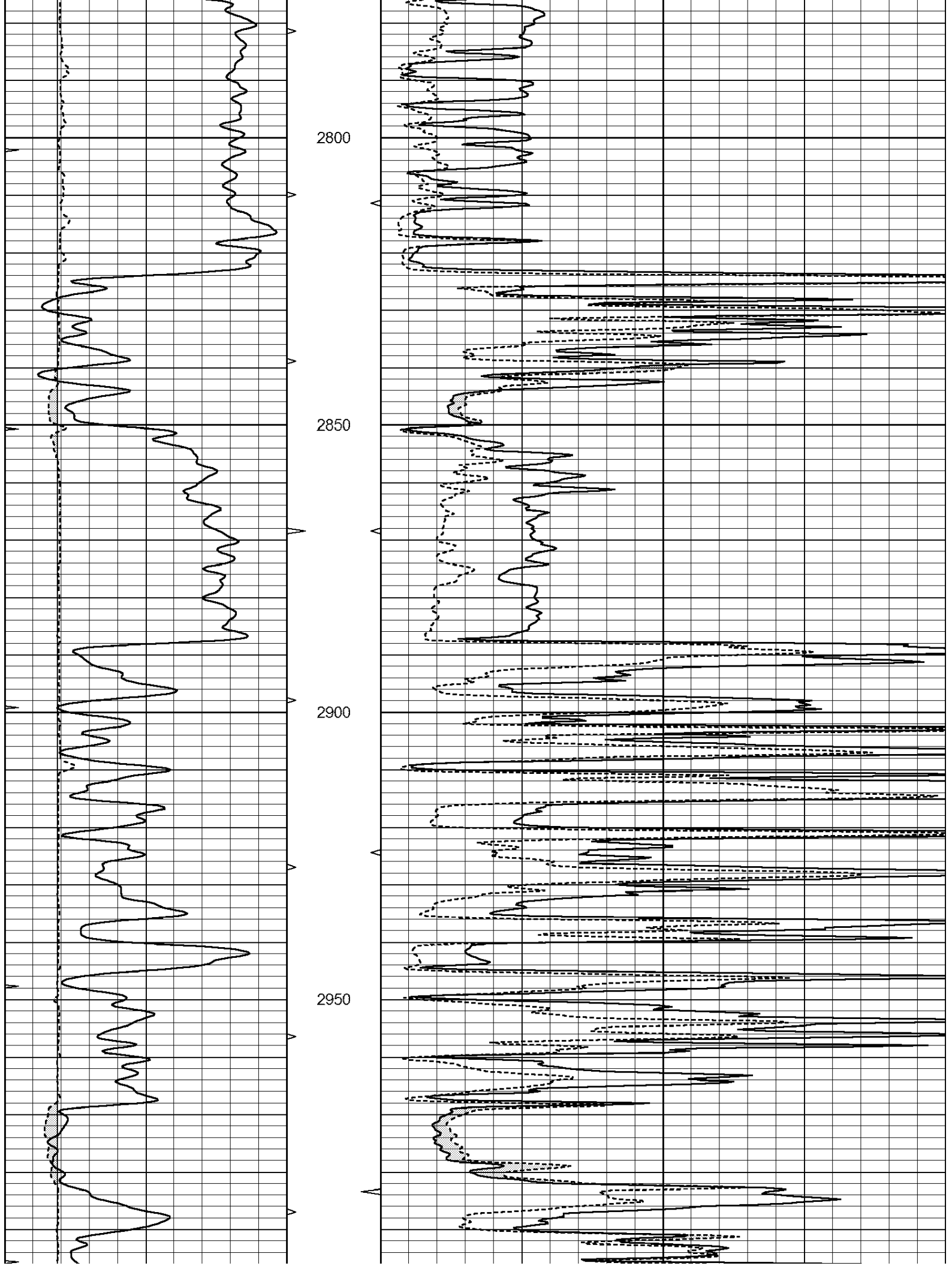


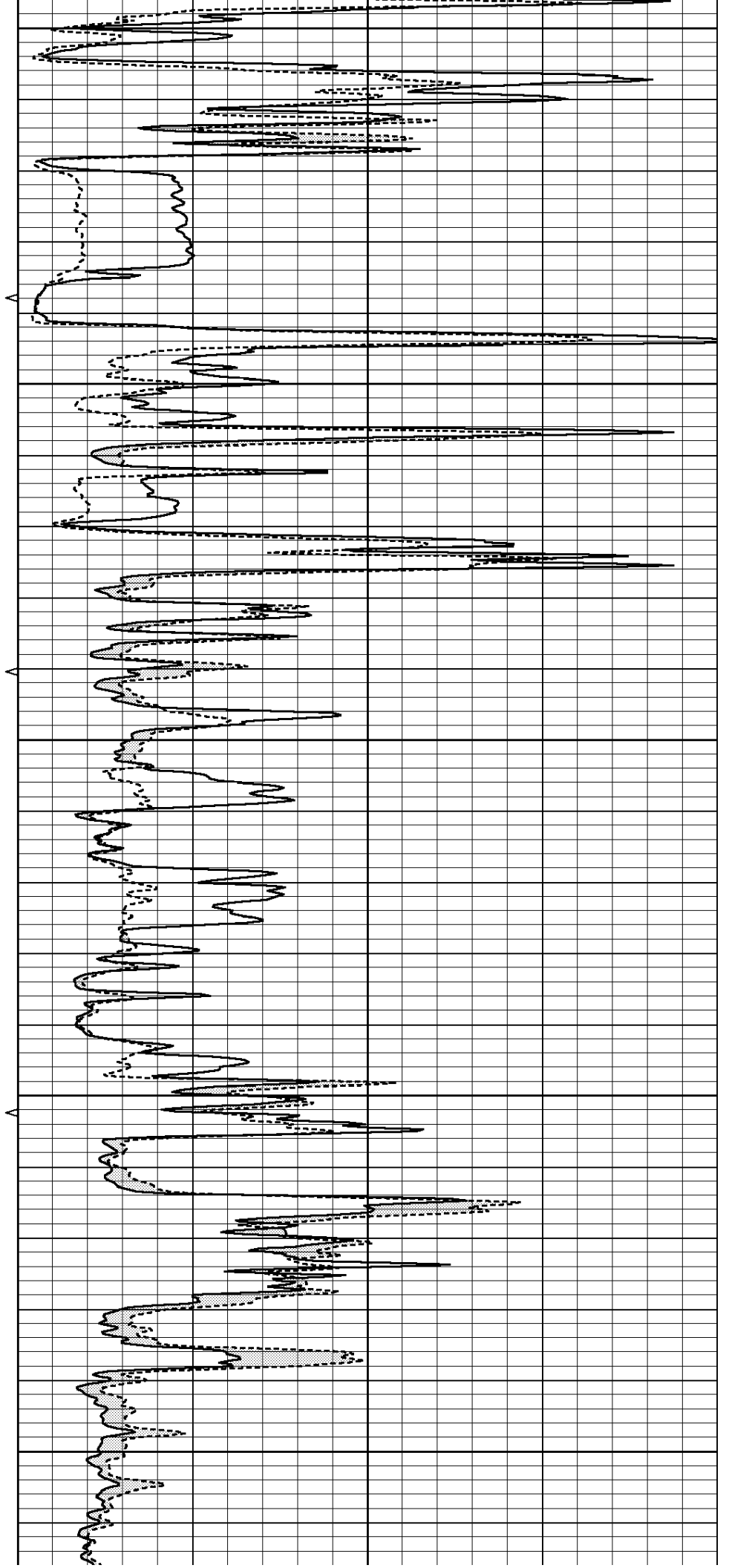
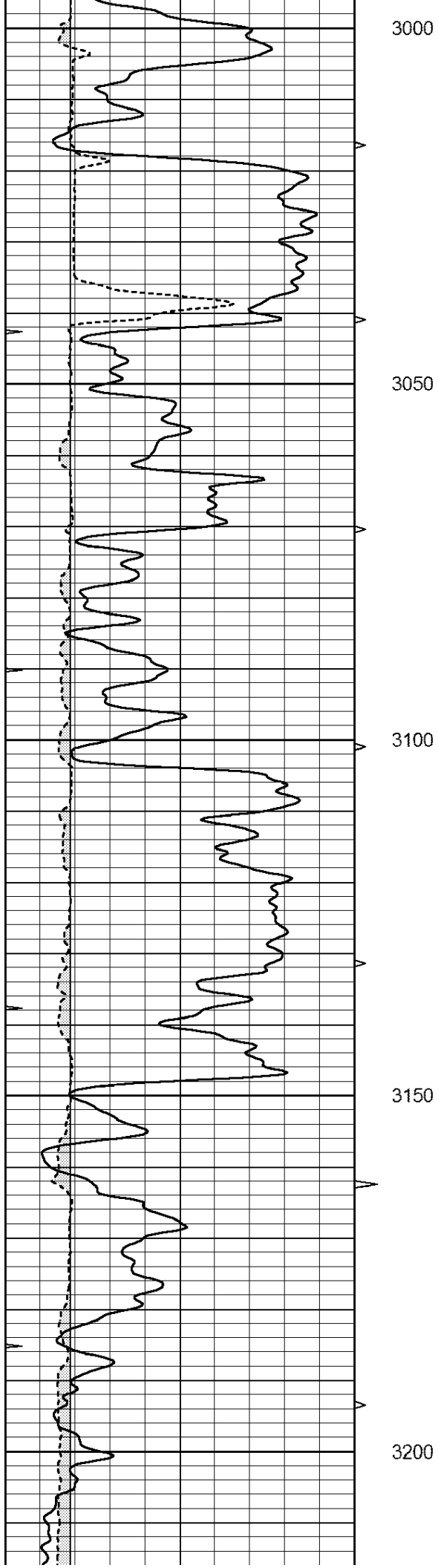
# MAIN PASS

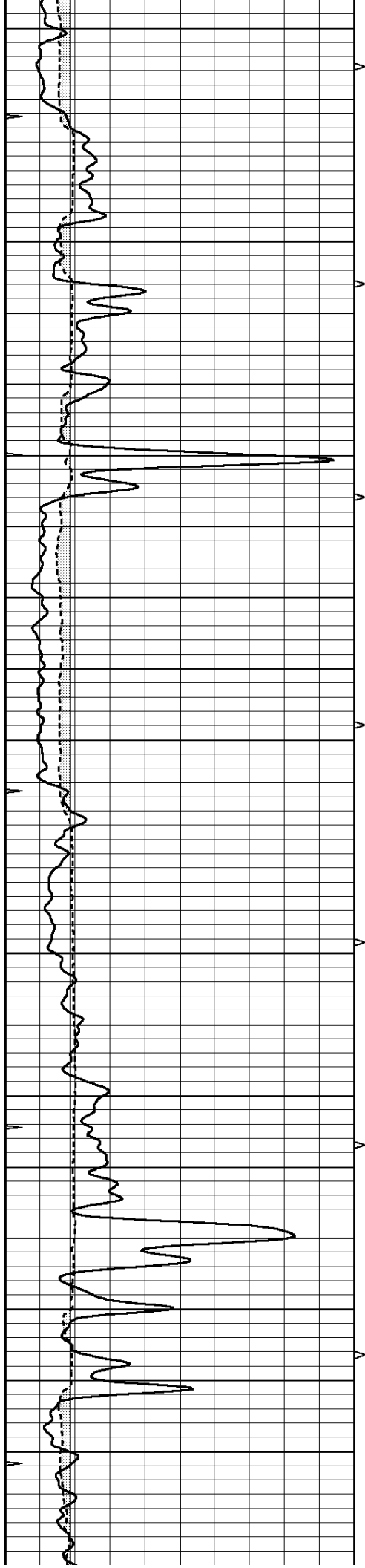
Database File: 2102ddn.db  
 Dataset Pathname: pass9.1  
 Presentation Format: \_micro  
 Dataset Creation: Mon Oct 16 07:01:12 2017 by Calc Open-Cased 090629  
 Charted by: Depth in Feet scaled 1:240

0	GAMMA RAY (GAPI)	150	ABHV	0	MEL1.5 (Ohm-m)	40
6	CALIPER (in)	16	10 (ft3)	0	MEL2.0 (Ohm-m)	40
0	MINMK	20	TBHV			
			0 (ft3)	10		







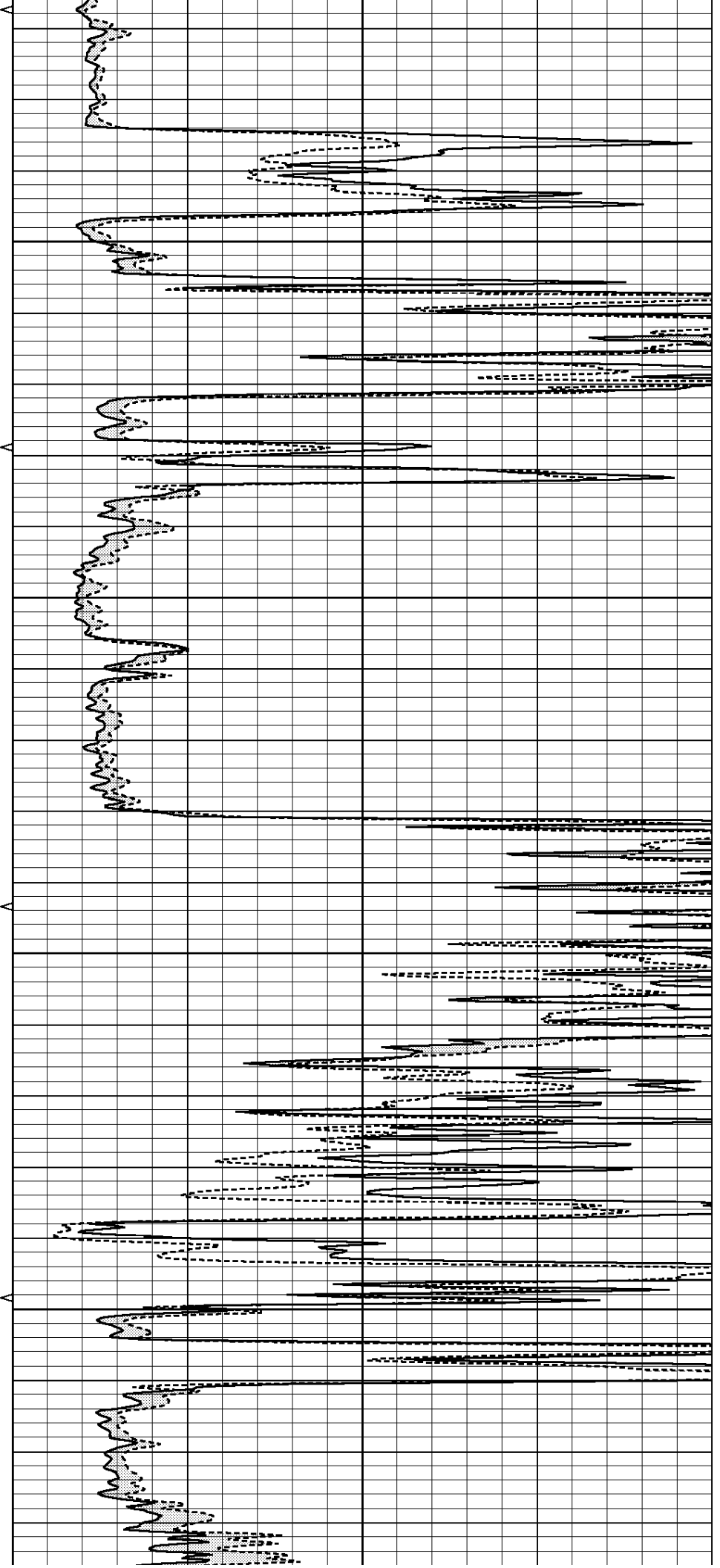


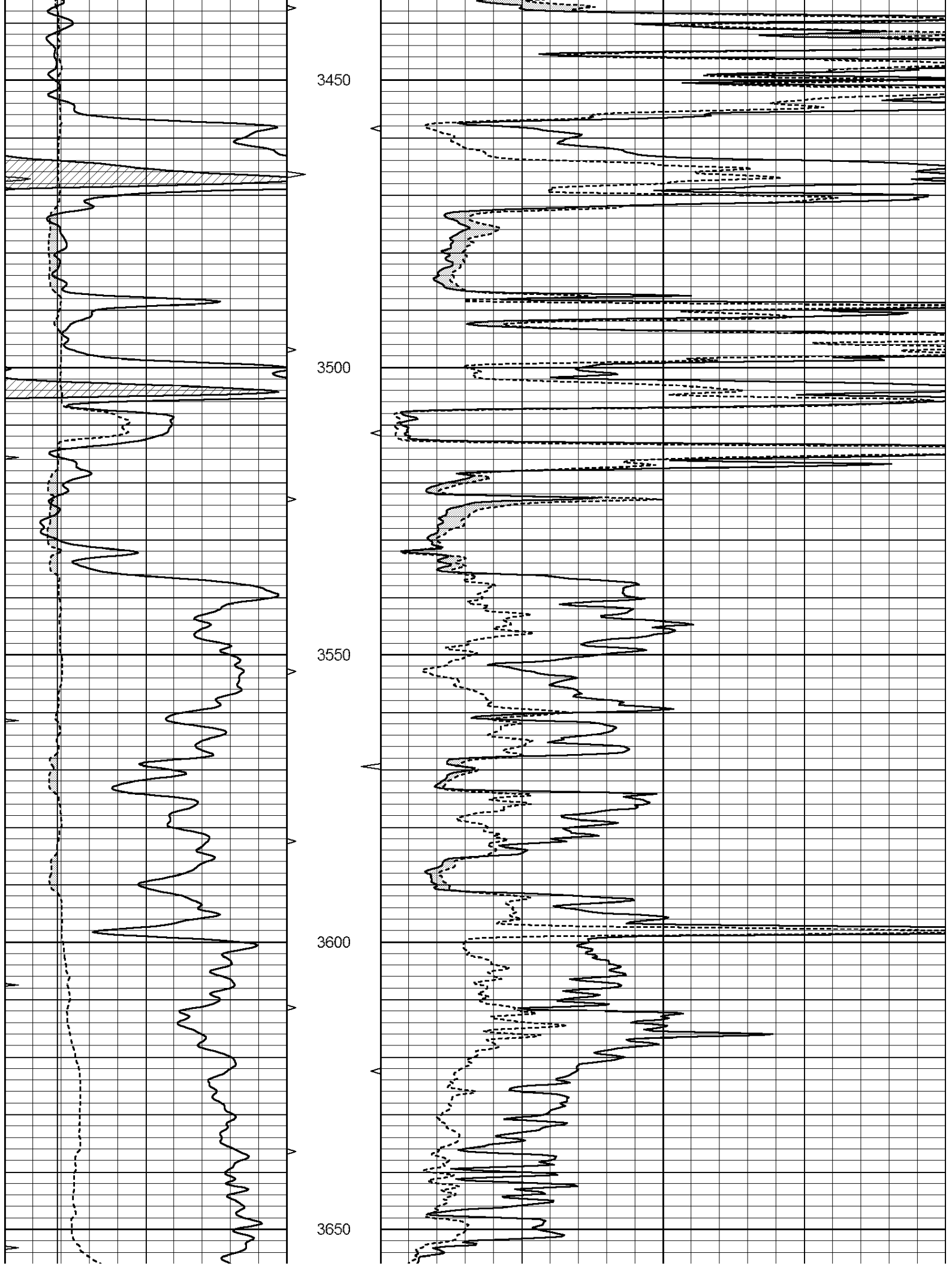
3250

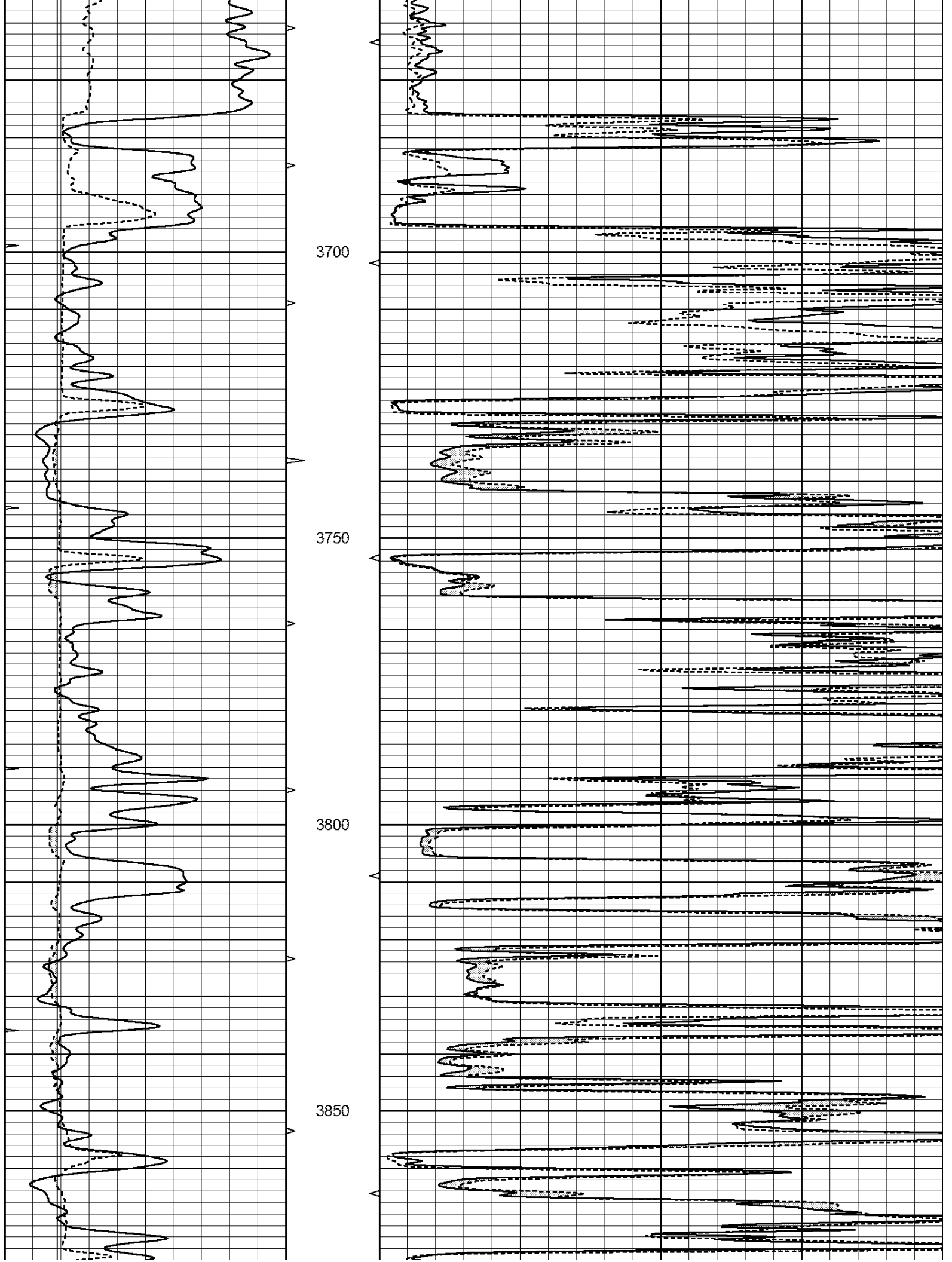
3300

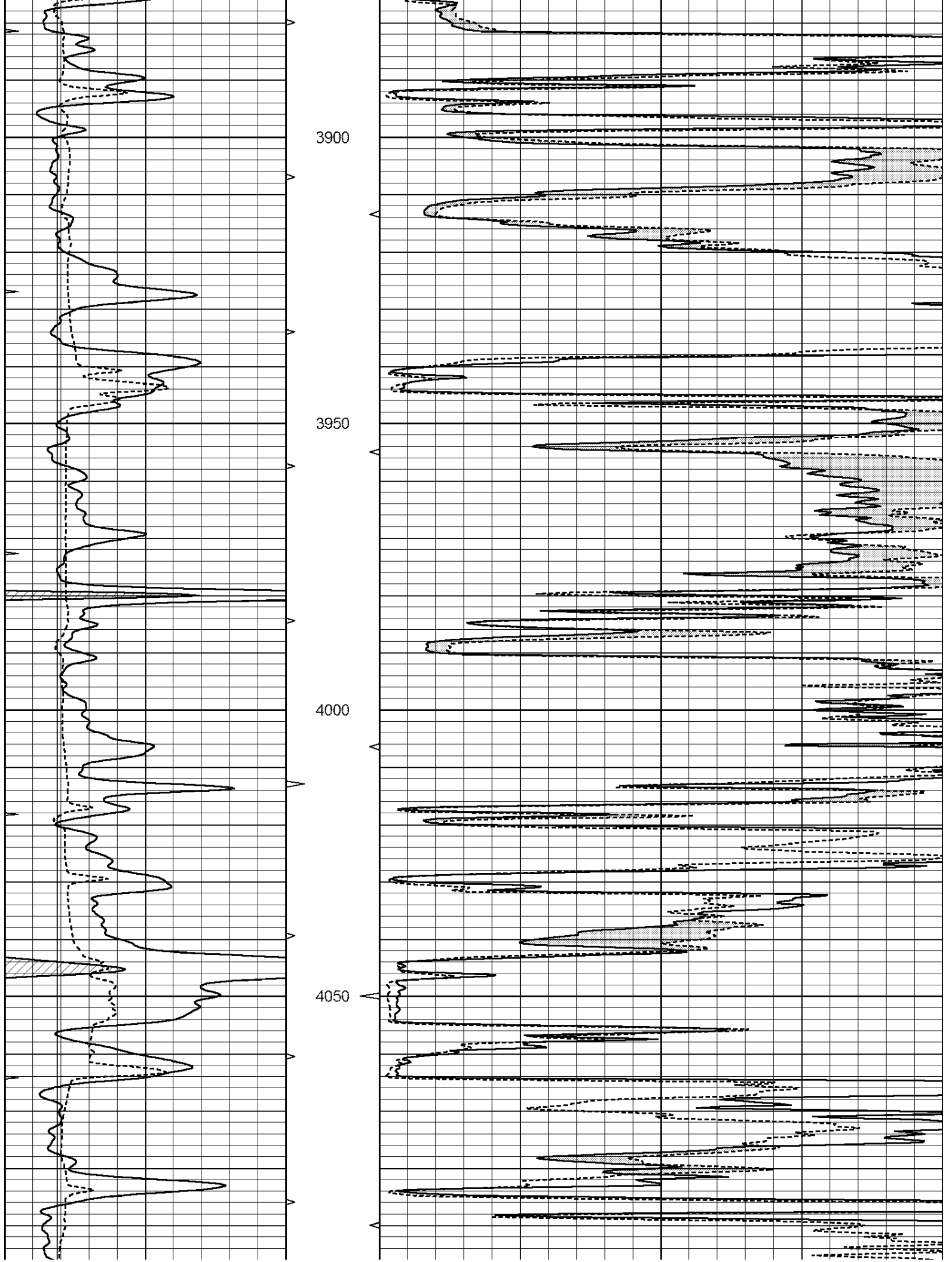
3350

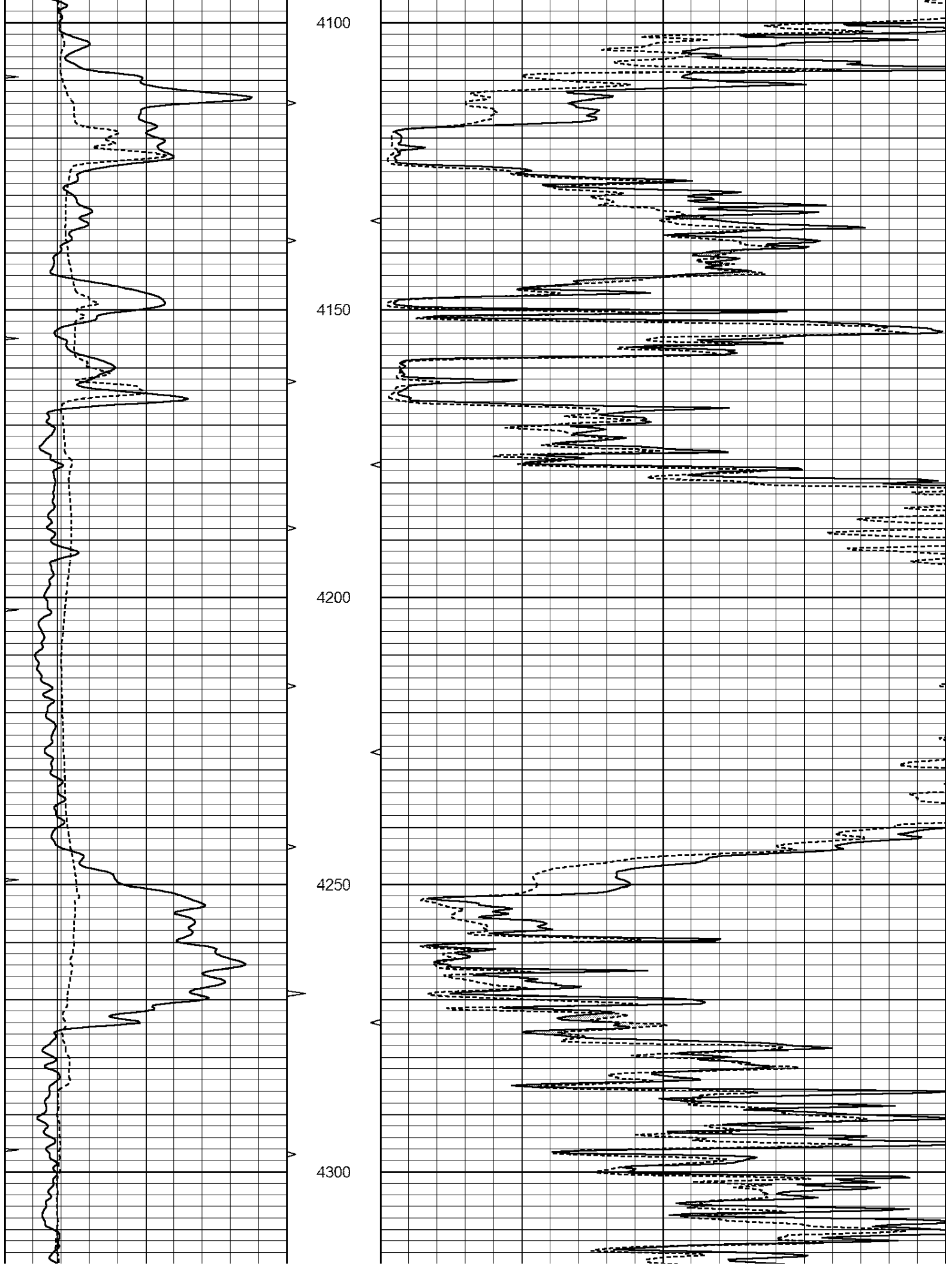
3400

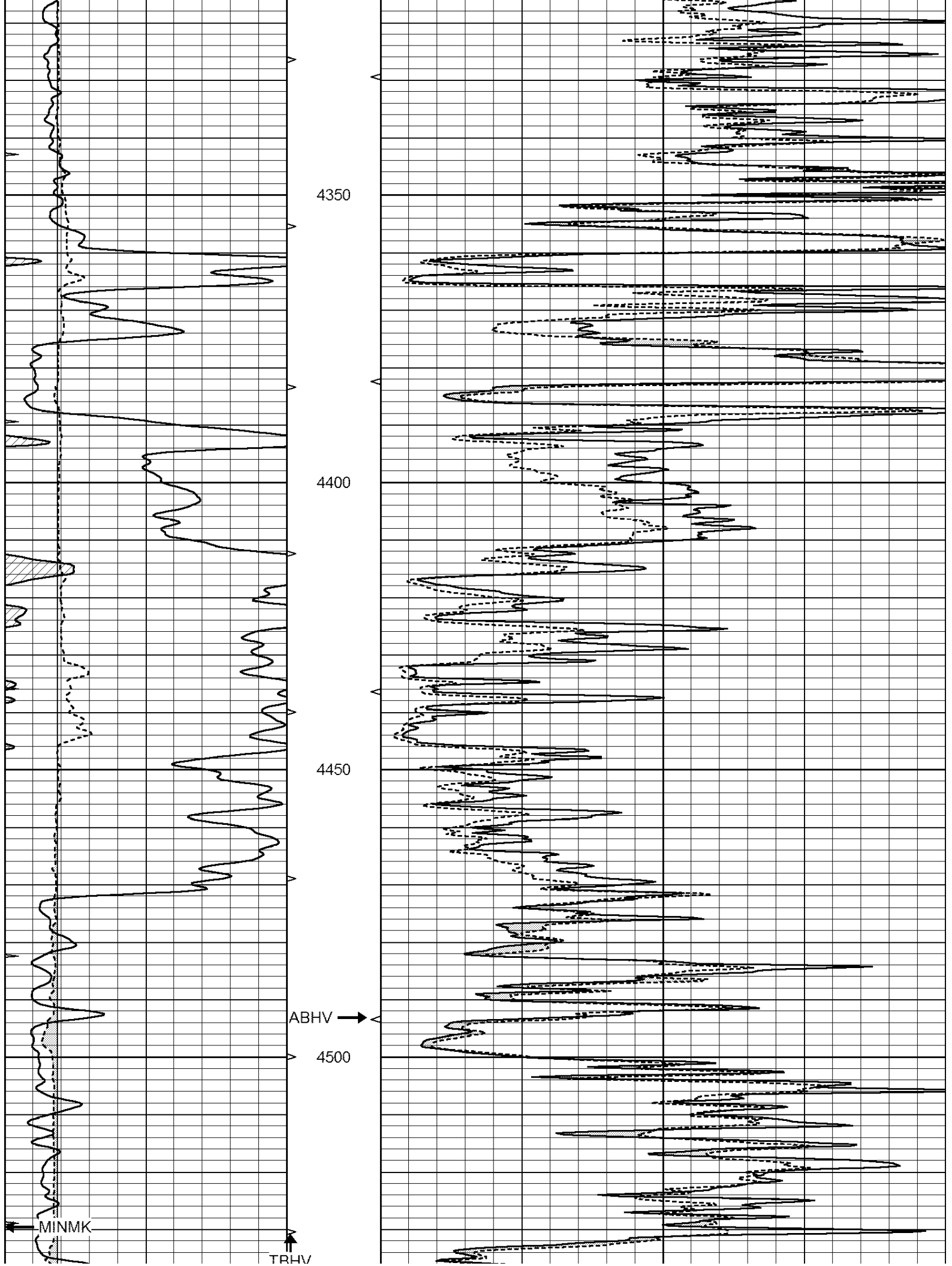


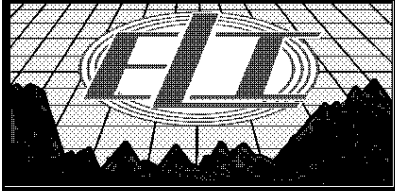
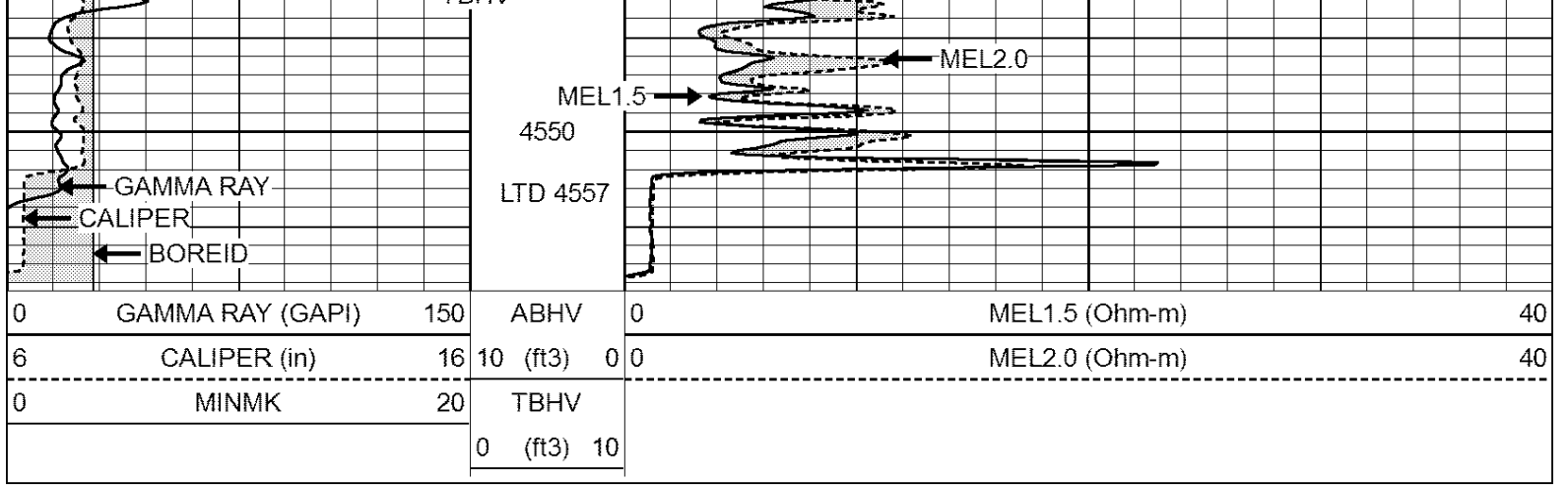








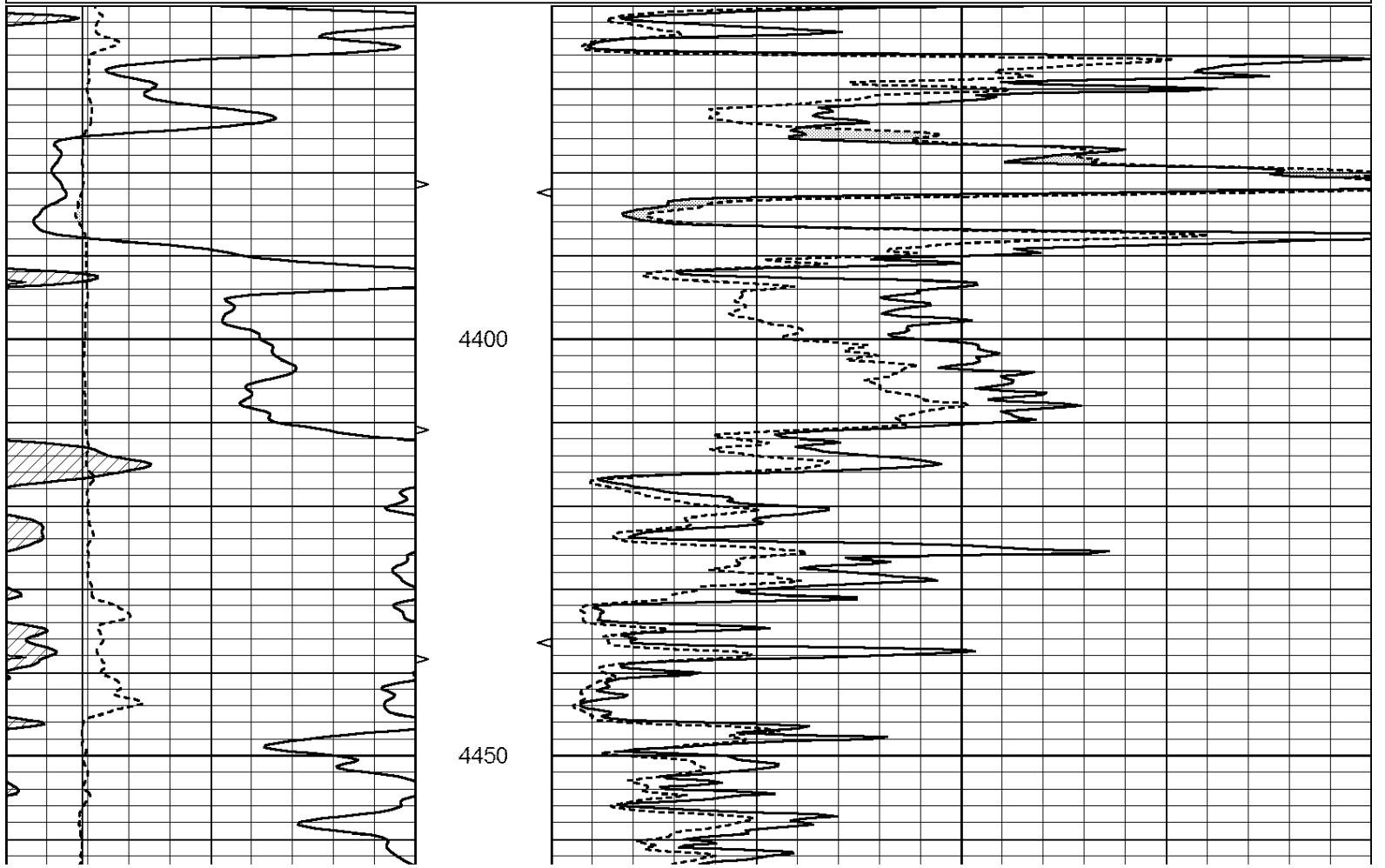


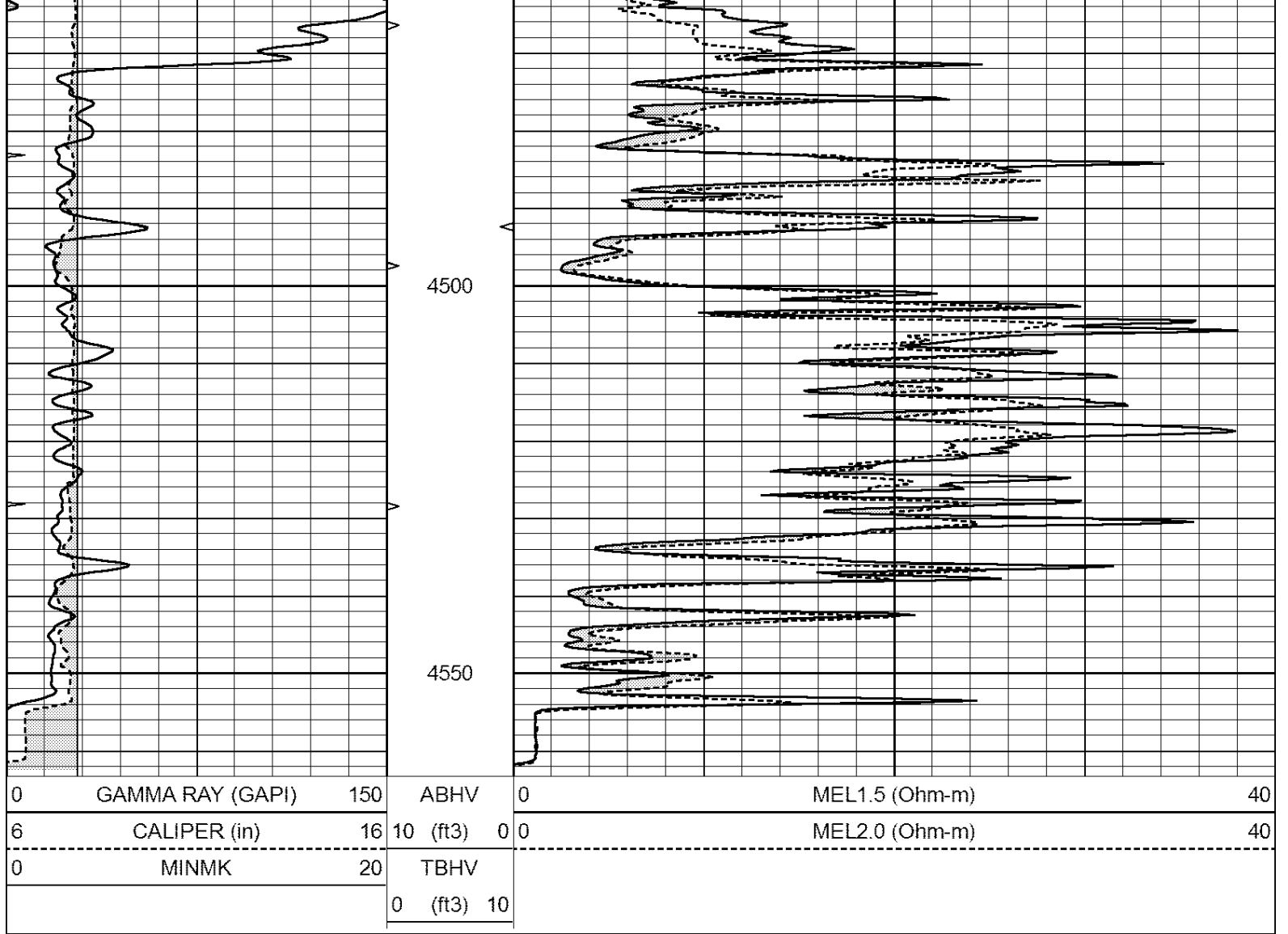


# REPEAT SECTION

Database File: 2102ddn.db  
 Dataset Pathname: pass8.1  
 Presentation Format: \_micro  
 Dataset Creation: Mon Oct 16 06:44:49 2017 by Calc Open-Cased 090629  
 Charted by: Depth in Feet scaled 1:240

0	GAMMA RAY (GAPI)	150	ABHV	0	MEL1.5 (Ohm-m)	40
6	CALIPER (in)	16	10 (ft3)	0	MEL2.0 (Ohm-m)	40
0	MINMK	20	TBHV			
			0 (ft3)	10		





### Calibration Report

Database File: 2102ddn.db  
 Dataset Pathname: pass8.1  
 Dataset Creation: Mon Oct 16 06:44:49 2017 by Calc Open-Cased 090629

### MICRO Calibration Report

Serial Number: MICRO6  
 Tool Model: PROBE  
 Performed: Wed Aug 16 17:13:39 2017

Caliper Calibration: Gain=3.960 Offset=4.551

References	Low Cal	High Cal
Readings	7.000	14.000
	0.555	2.323

1.5" Calibration: Gain=43.075 Offset=-0.400

References	Low Cal	High Cal
Readings	0.000	20.000
	0.004	1.196

2" Calibration: Gain=45.000 Offset=-1.000

References	Low Cal	High Cal
Readings	0.000	20.000
	0.006	0.913

Gamma Ray Calibration Report

Serial Number:	GR2	
Tool Model:	OPEN	
Performed:	Wed Aug 16 17:13:40 2017	
Calibrator Value:	1.0	GAPI
Background Reading:	0.0	cps
Calibrator Reading:	1.0	cps
Sensitivity:	0.3800	GAPI/cps