



SONIC LOG

Company WOOLSEY OPERATING COMPANY, LLC.
 Well HUBBELL #2
 Field BELLEFONT
 County FORD
 State KANSAS

Company WOOLSEY OPERATING COMPANY, LLC.
 Well HUBBELL #2
 Field BELLEFONT
 County FORD State KANSAS

Location: API # : 15-057-20987-00-00
 1578' FNL & 1207' FWL
 SEC 23 TWP 25S RGE 21W
 Permanent Datum GROUND LEVEL Elevation 2310'
 Log Measured From KELLY BUSHING 12' A.G.L.
 Drilling Measured From KELLY BUSHING
 Other Services CDL/CNL/DIL SONIC
 Elevation K.B. 2322'
 D.F. 2320'
 G.L. 2310'

Date	10/31/17
Run Number	TWO
Depth Driller	4900
Depth Logger	4904
Bottom Logged Interval	4893
Top Log Interval	750
Casing Driller	8 5/8" @ 789
Casing Logger	789
Bit Size	7 7/8"
Type Fluid in Hole	CHEMICAL MUD
Density / Viscosity	9.3/54
pH / Fluid Loss	9.5/9.6
Source of Sample	FLOWLINE
Rm @ Meas. Temp	.60@52
Rmt @ Meas. Temp	.45@52
Rmc @ Meas. Temp	.72@52
Source of Rmf / Rmc	MEASURED
Rm @ BHT	25@124
Time Circulation Stopped	2 HOURS
Time Logger on Bottom	///
Maximum Recorded Temperature	124F
Equipment Number	4010
Location	HAYS, KANSAS
Recorded By	GUS PFANENSTIEL
Witnessed By	BILLY KLAVER

<<< Fold Here >>>

All interpretations are opinions based on inferences from electrical or other measurements and we cannot and do not guarantee the accuracy or correctness of any interpretation, and we shall not, except in the case of gross or willful negligence on our part, be liable or responsible for any loss, costs, damages, or expenses incurred or sustained by anyone resulting from any interpretation made by any of our officers, agents or employees. These interpretations are also subject to our general terms and conditions set out in our current Price Schedule.

Comments

THANK YOU FOR USING ELI WIRELINE, HAYS, KS. (785) 628-6395

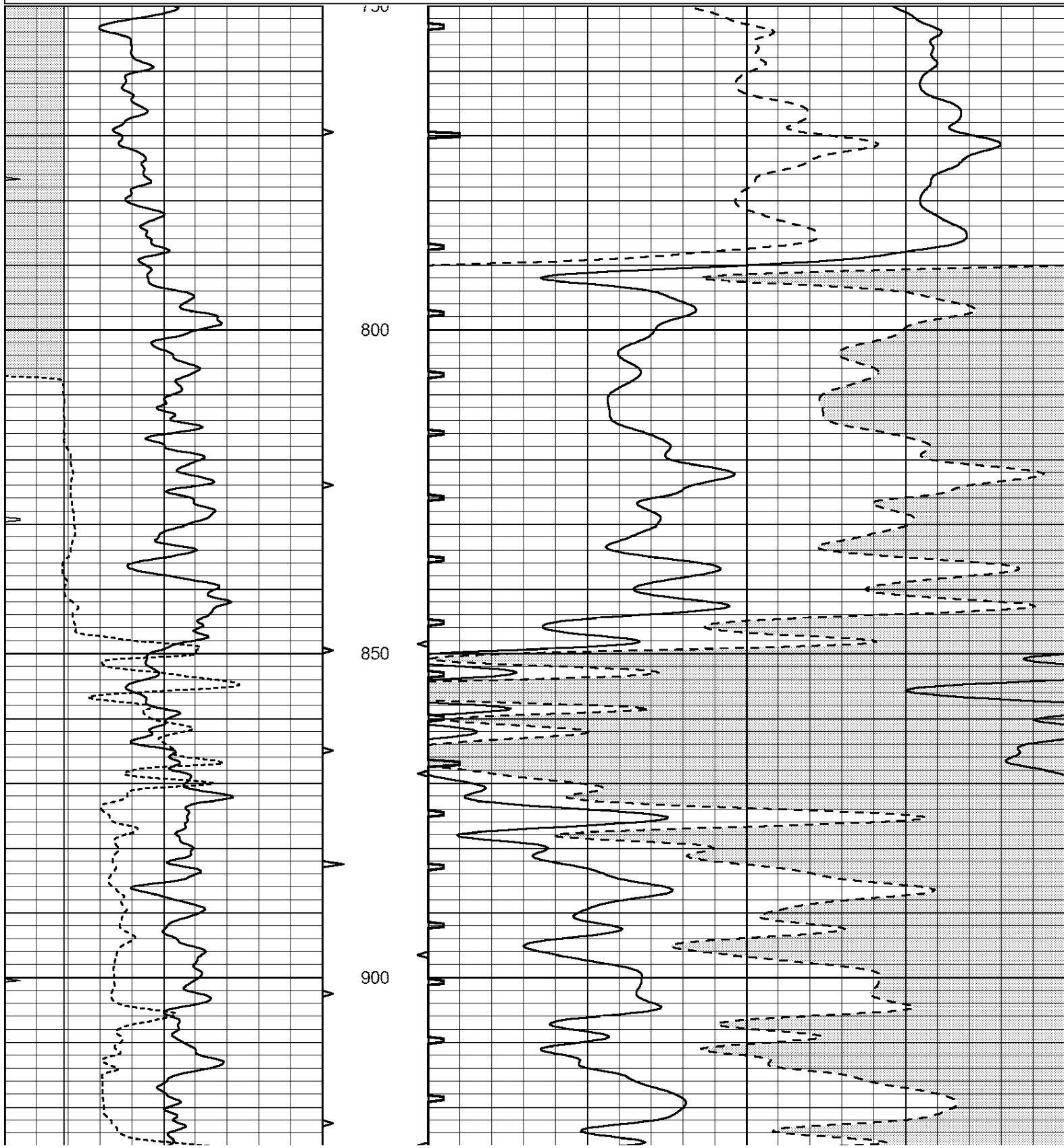
DIRECTIONS
 OFFERLE WEST TO RD 134,
 SOUTH 1.5 MILES, EAST INTO.

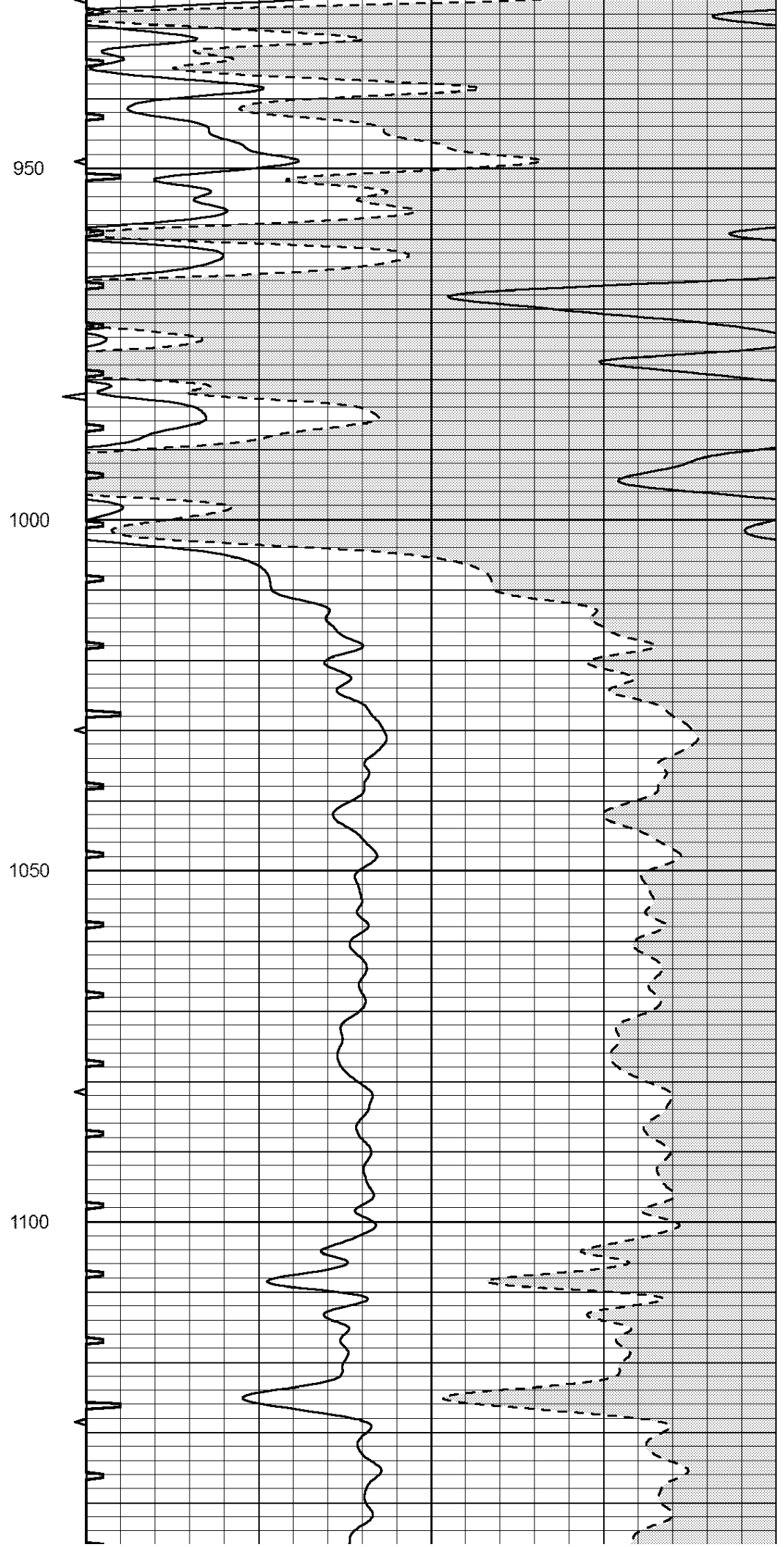
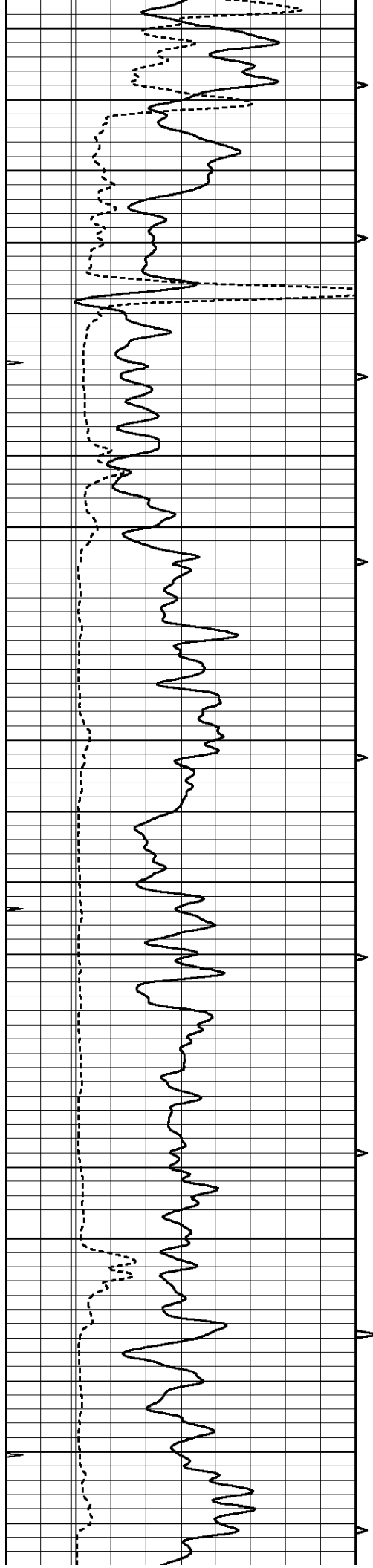


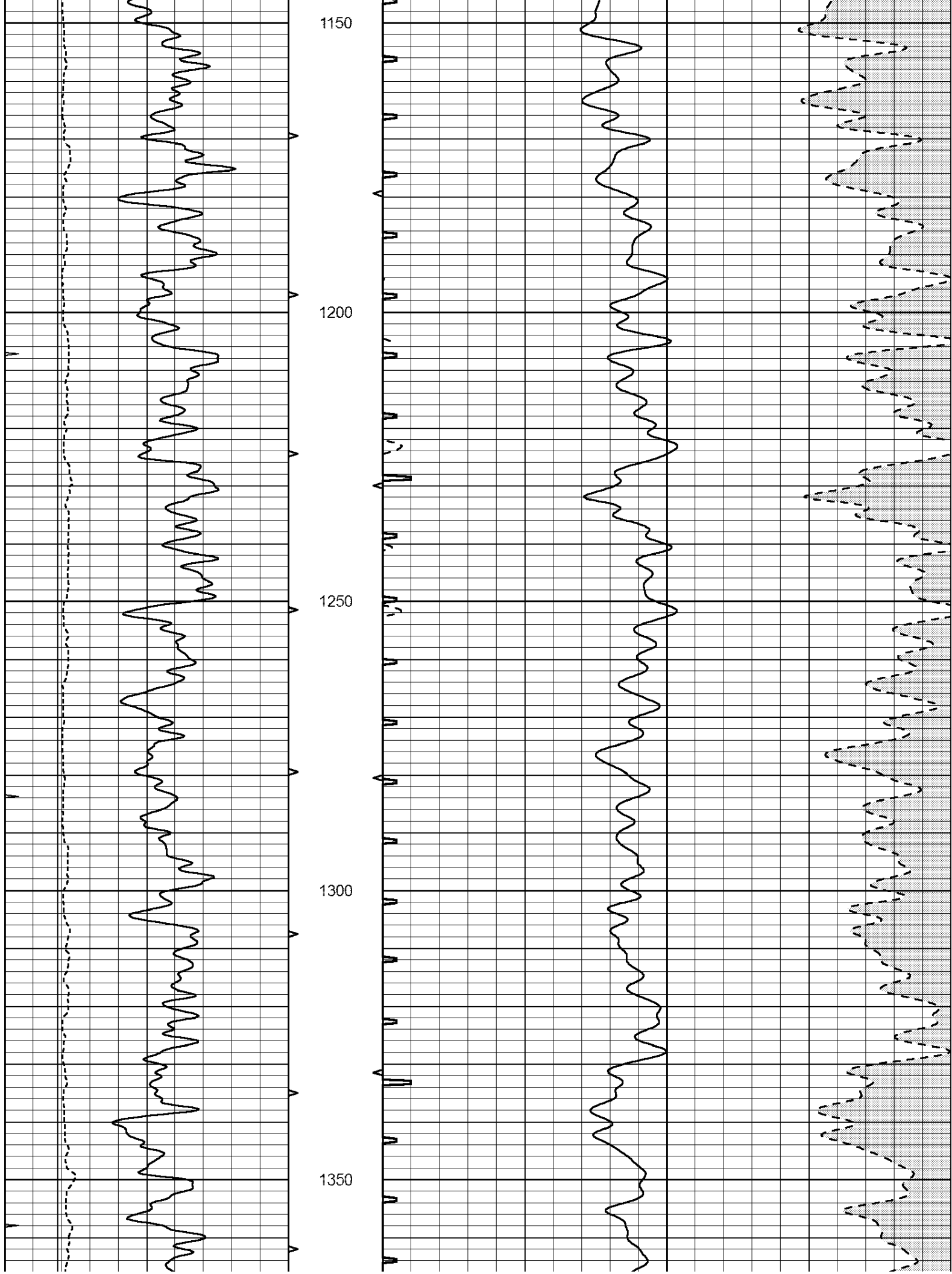
MAIN PASS

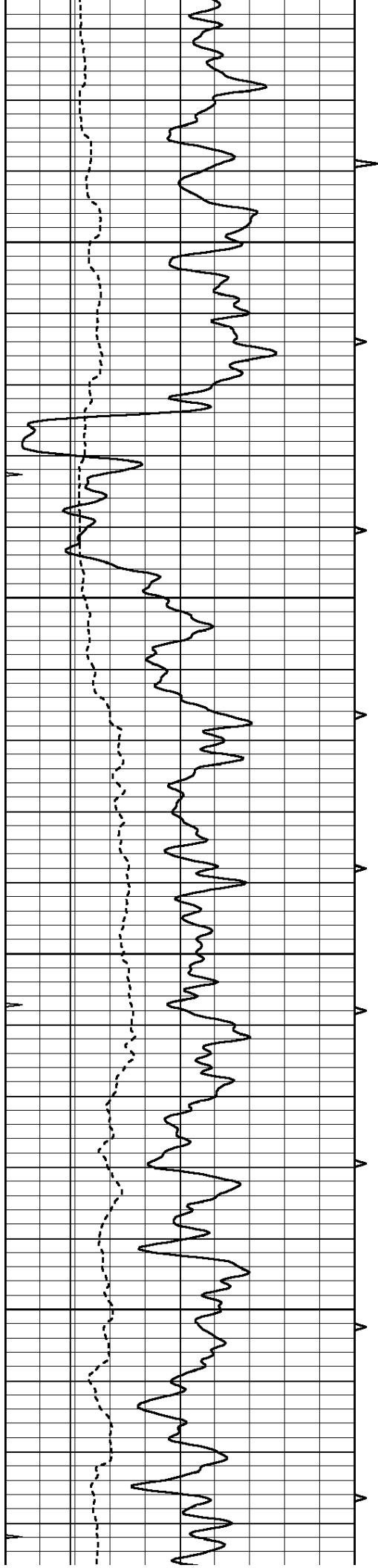
Database File: 2105pe.db
 Dataset Pathname: pass5
 Presentation Format: _slt
 Dataset Creation: Tue Oct 31 13:22:34 2017 by Log Open-Cased 090629
 Charted by: Depth in Feet scaled 1:240

0	GAMMA RAY (GAPI)	150	ABHV	140	DELTA TIME (usec/ft)	40	
6	CALIPER (in)	16	10 (ft3)	0	30	SONIC POROSITY (pu)	-10
0	MINMK	20	TBHV	0	ITT (msec)	20	
			0 (ft3)	10			







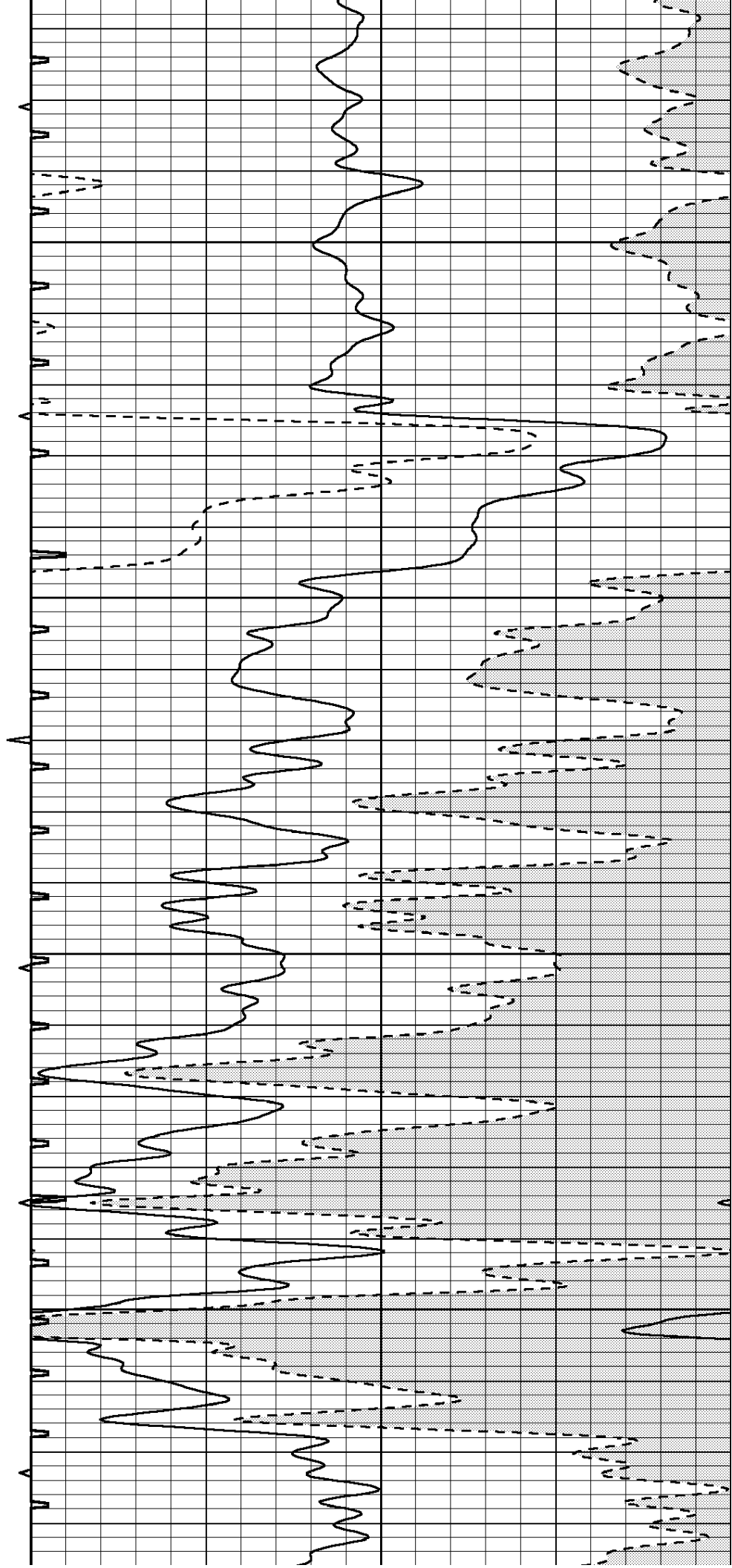


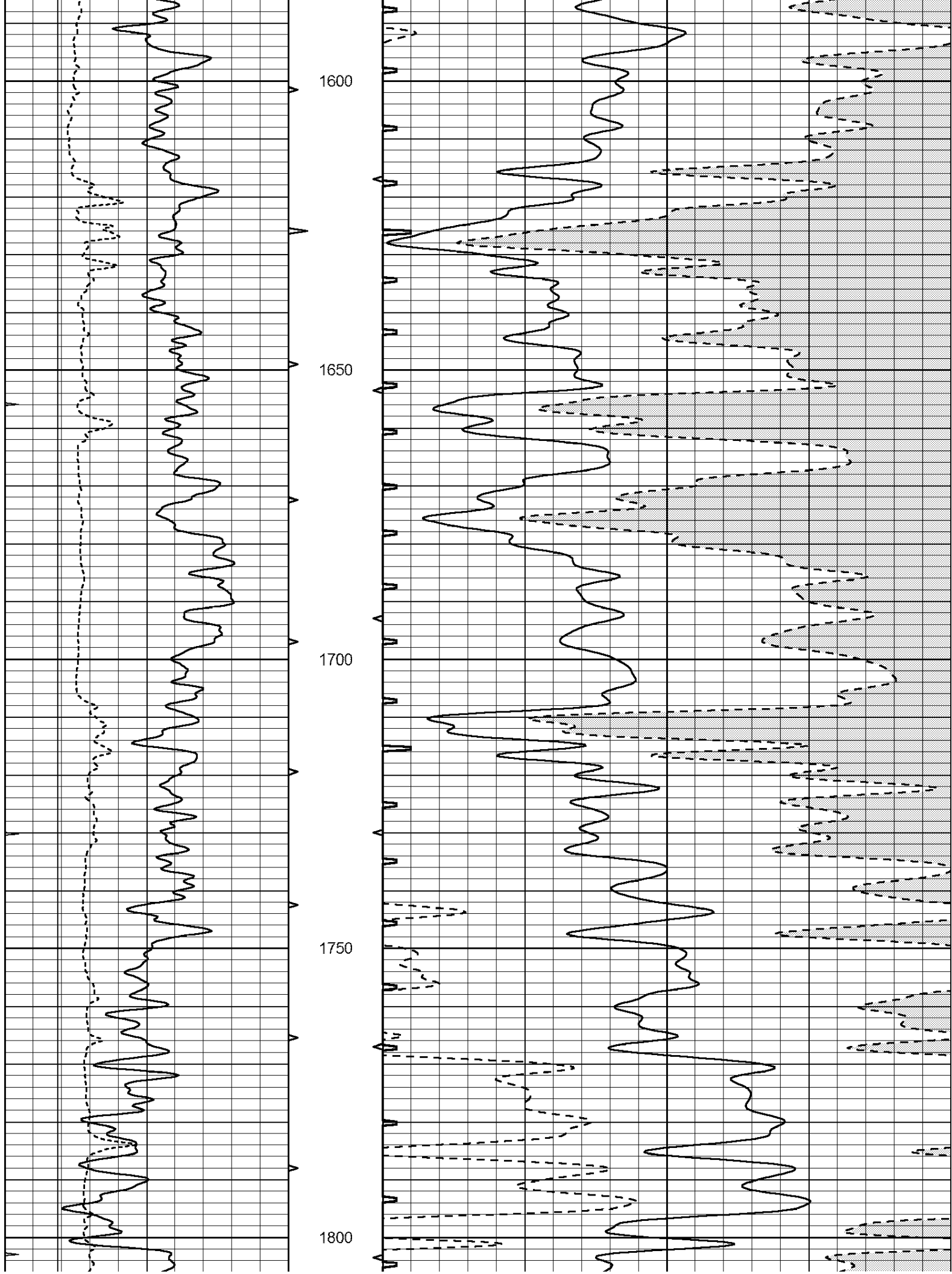
1400

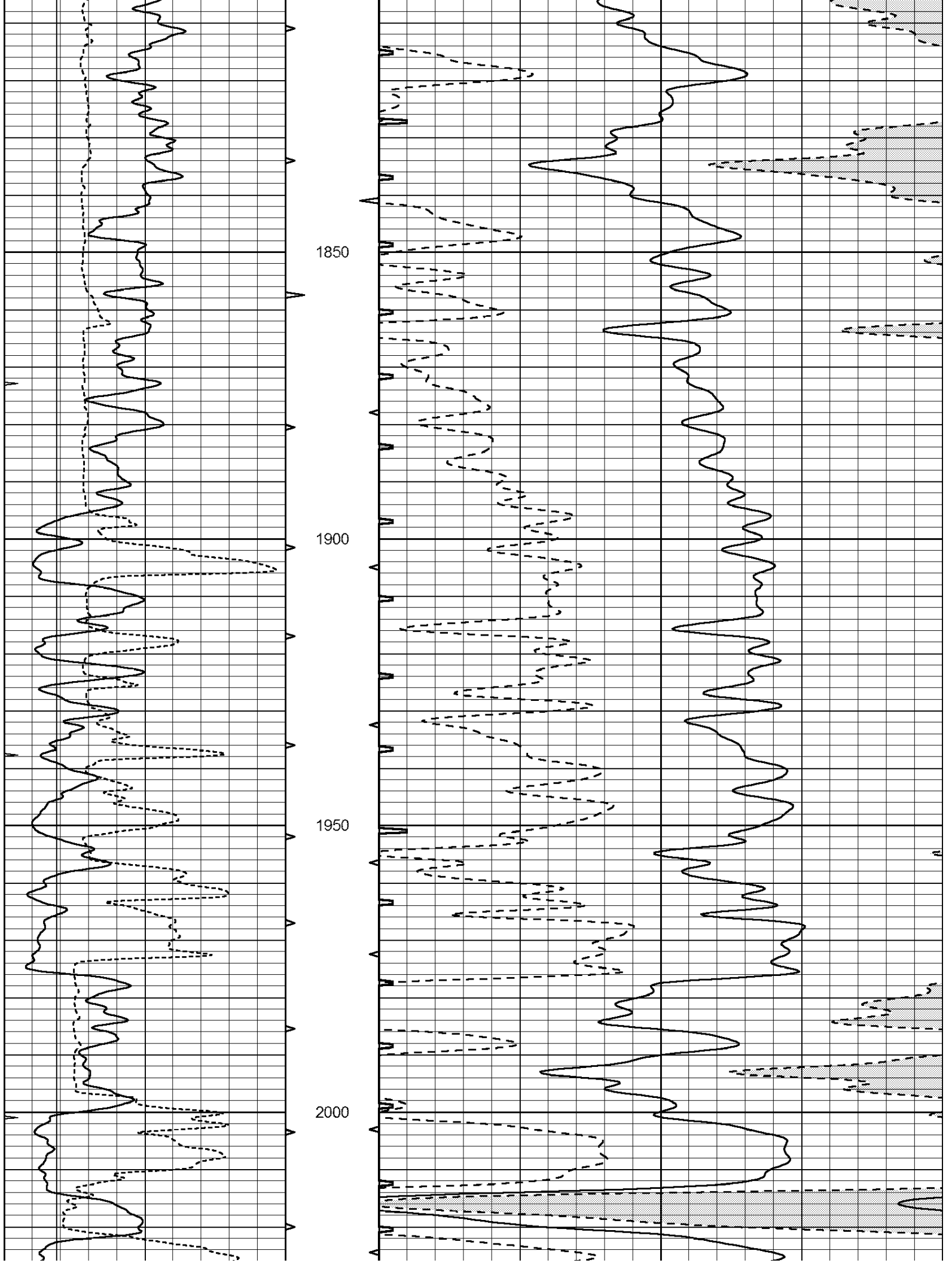
1450

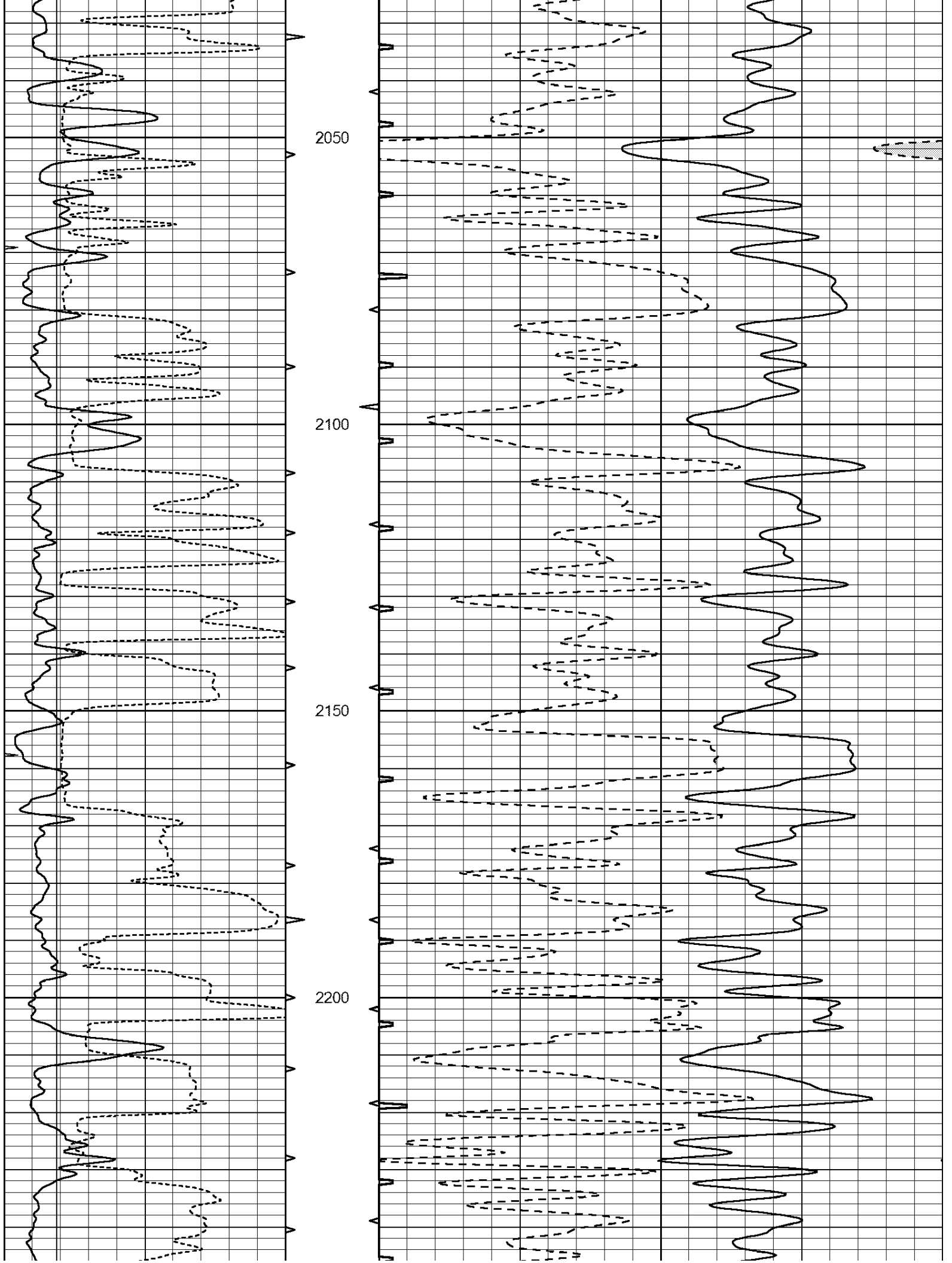
1500

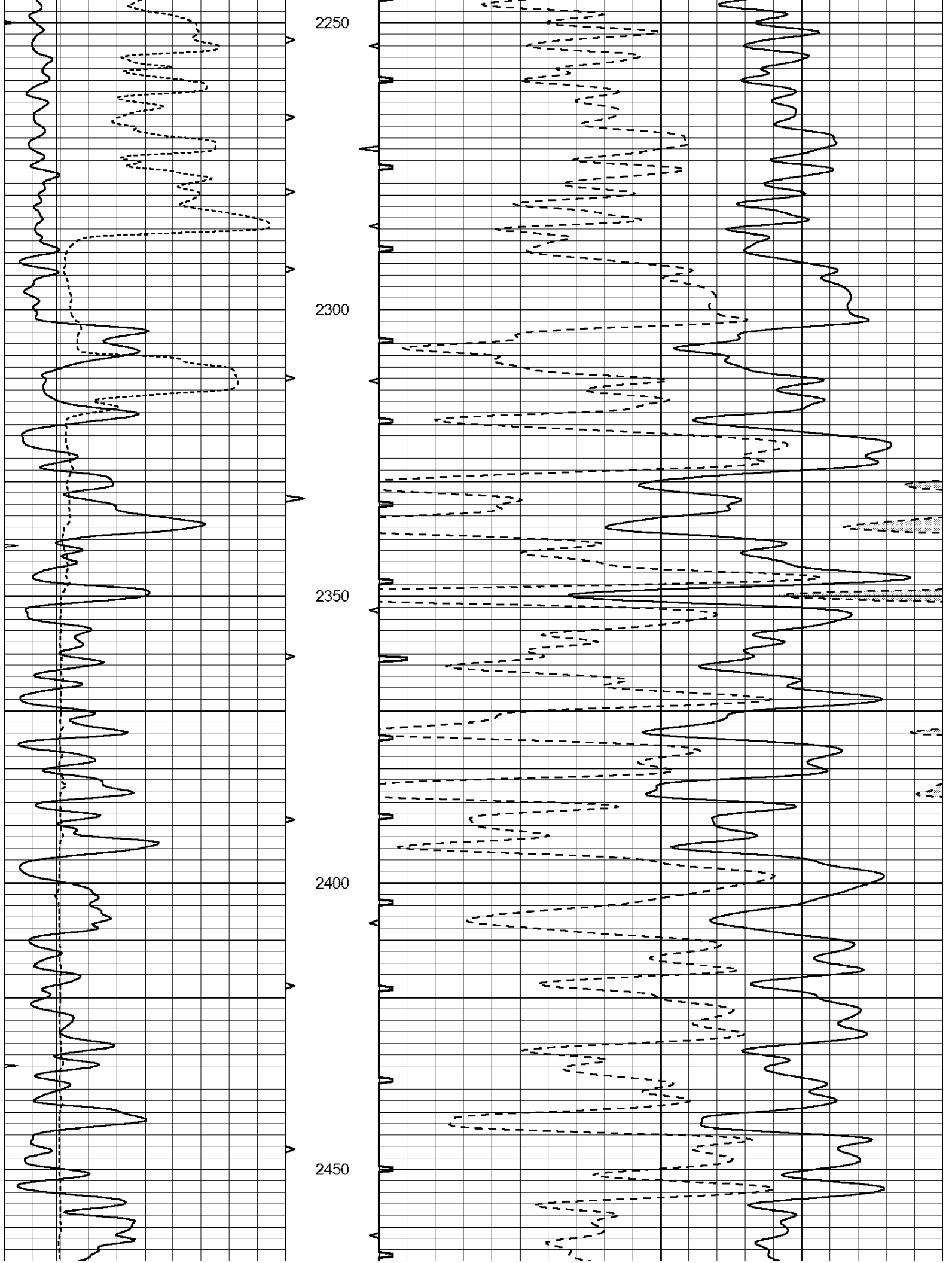
1550

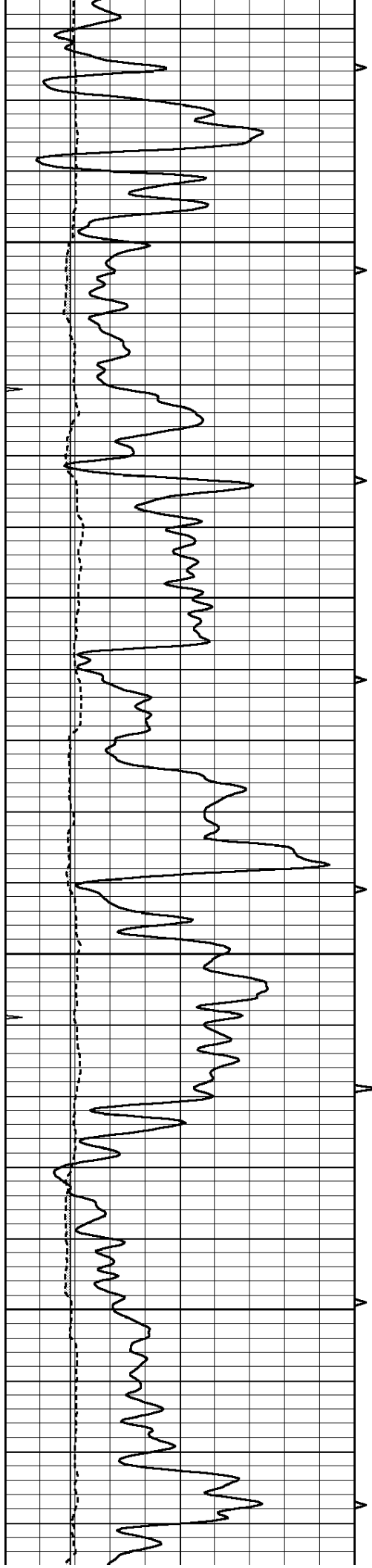










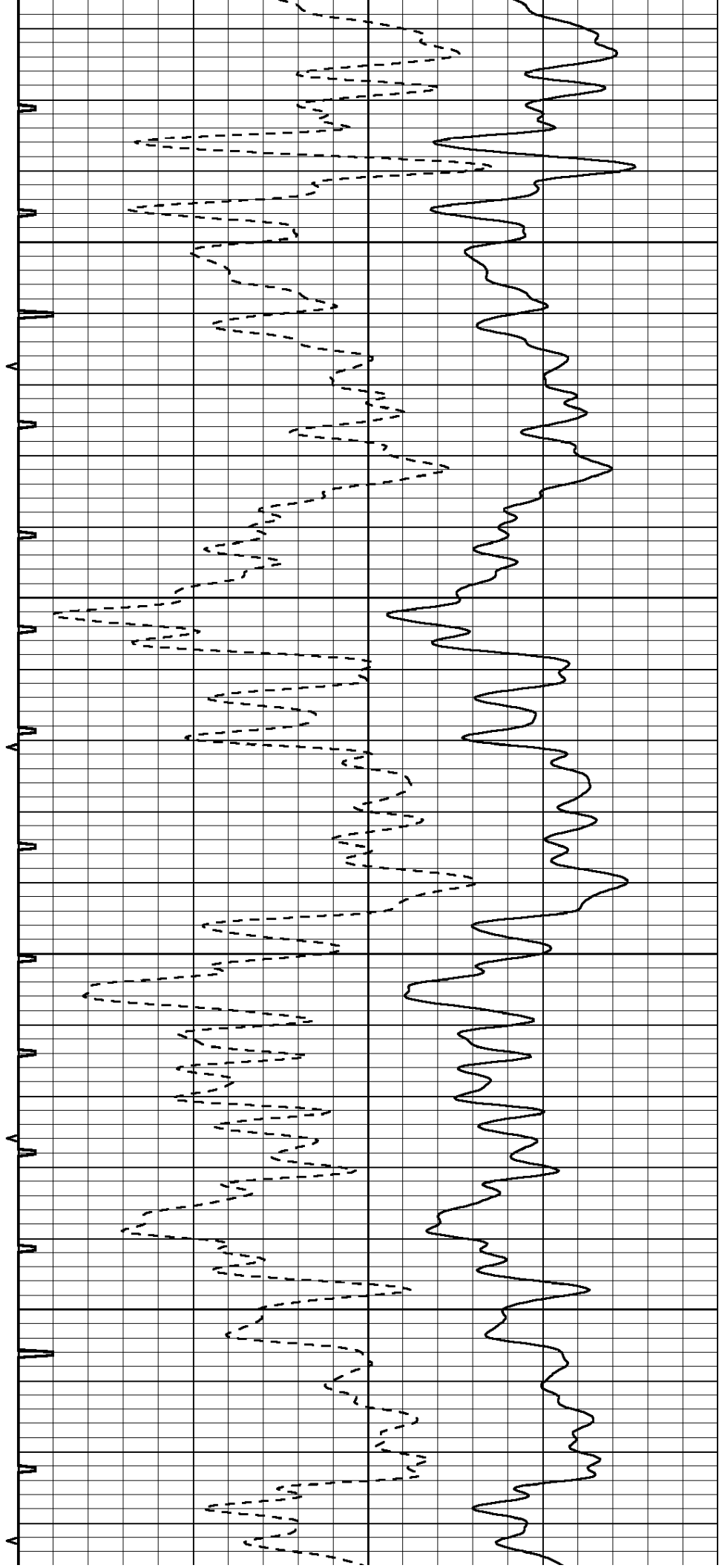


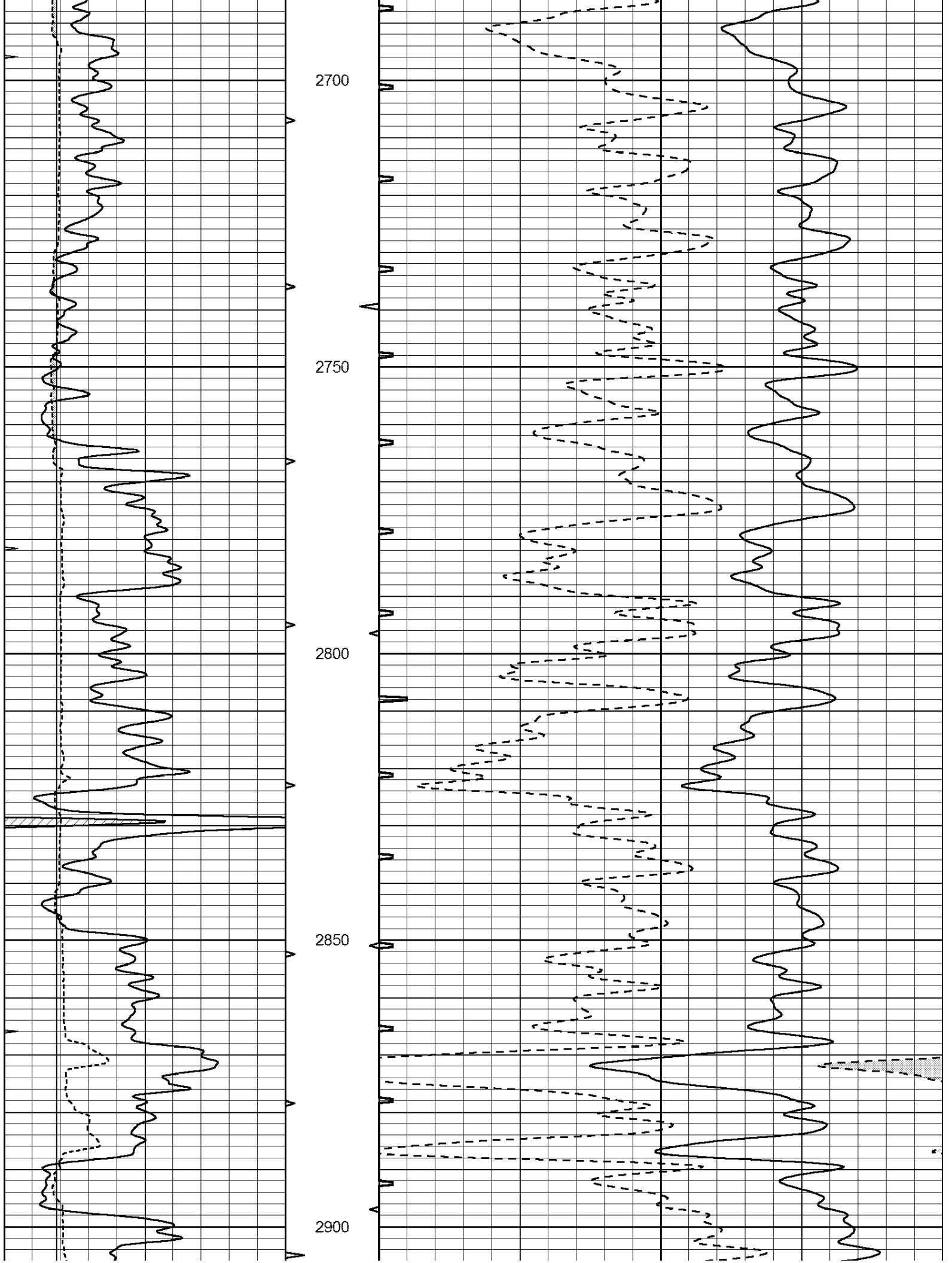
2500

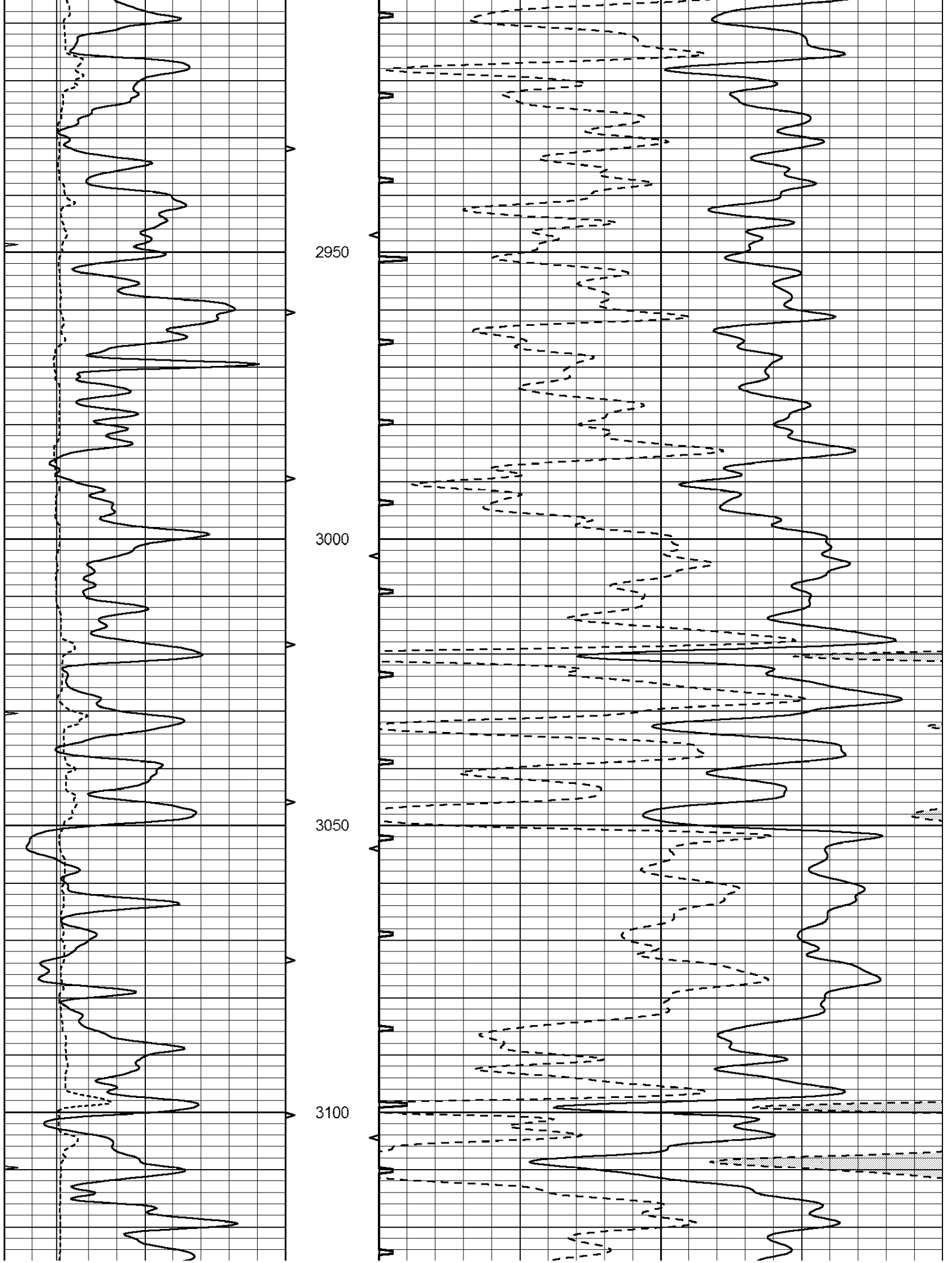
2550

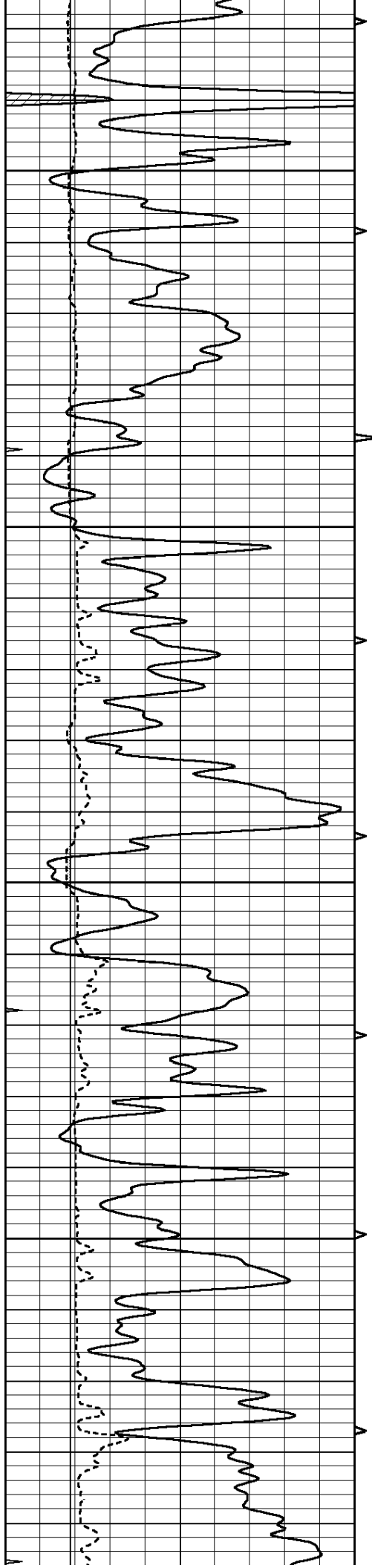
2600

2650







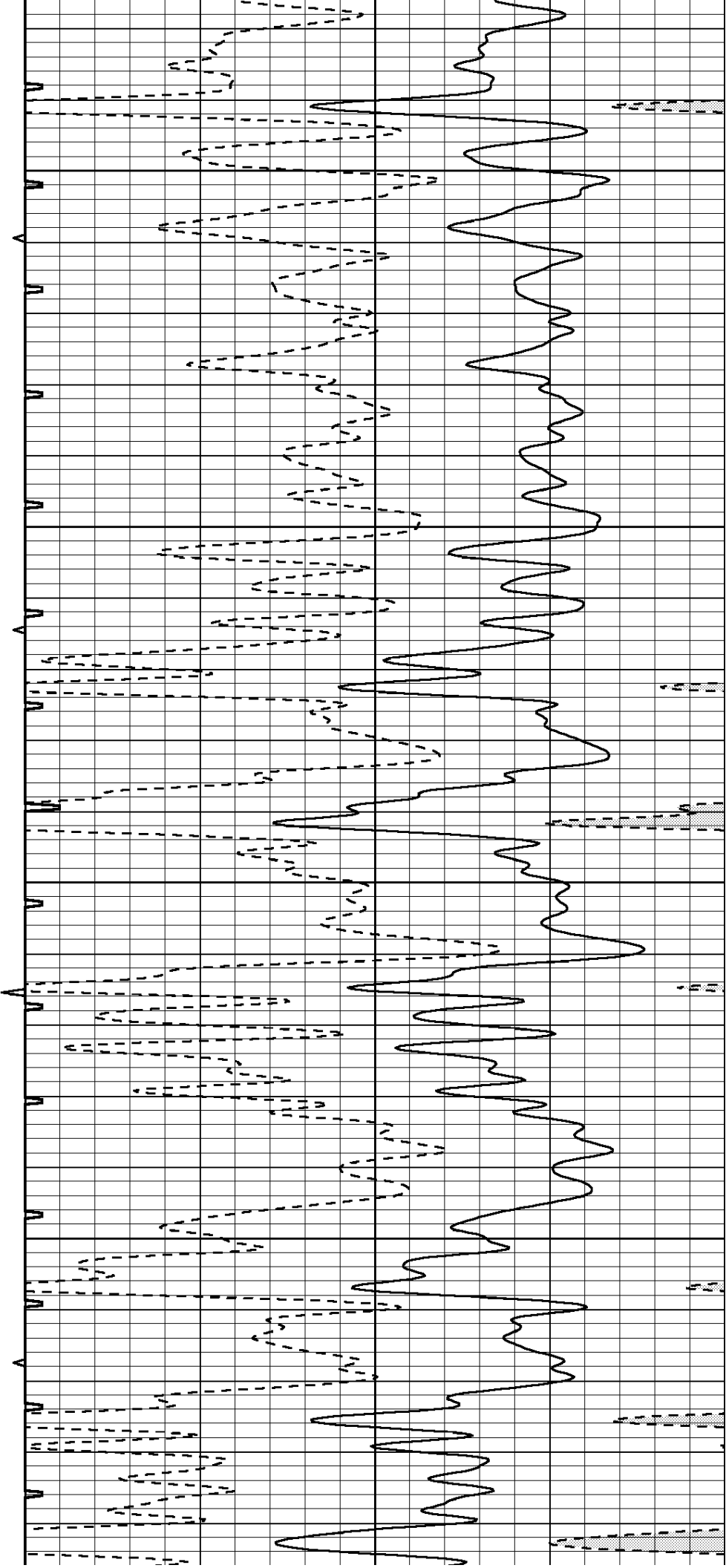


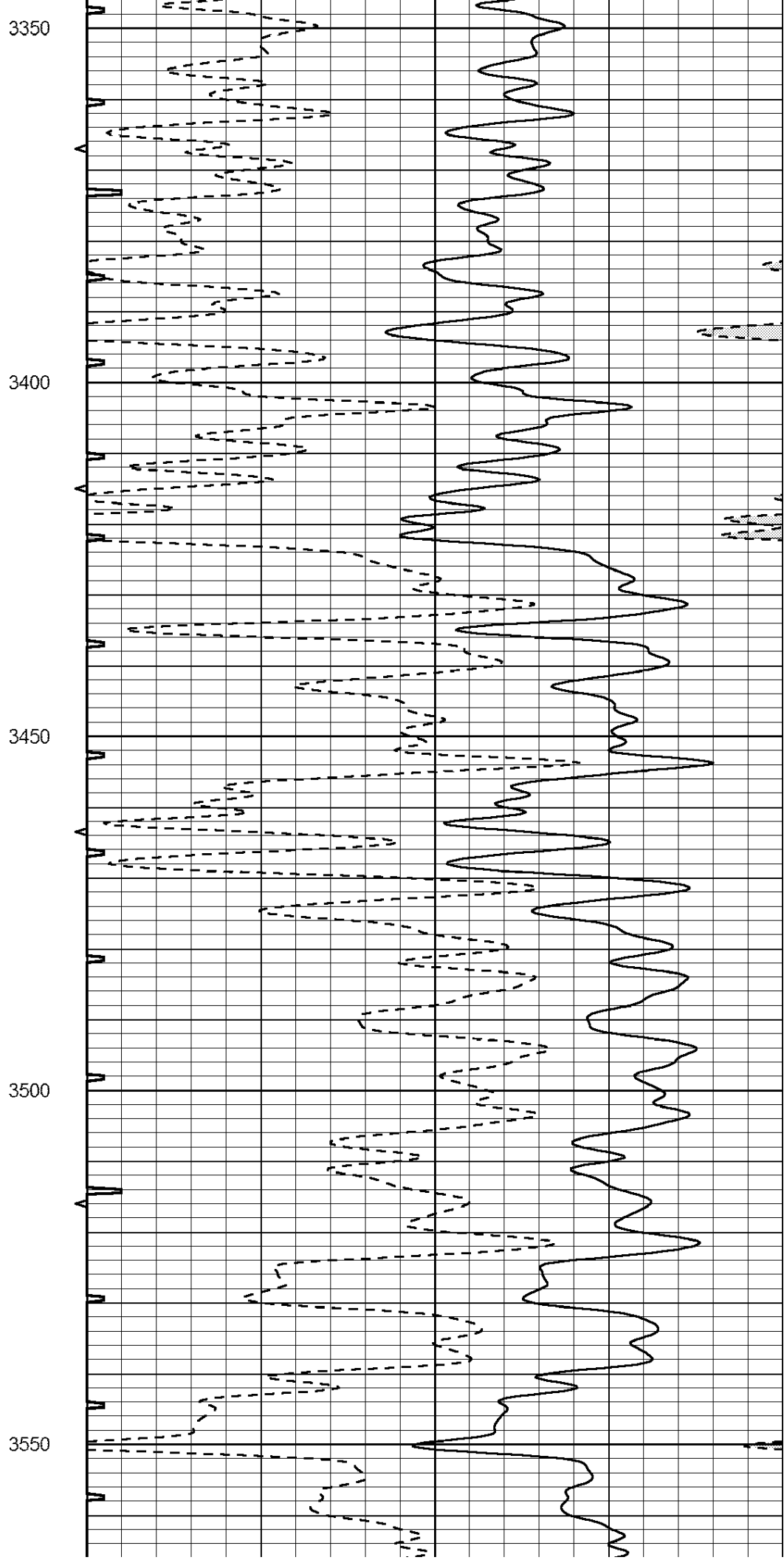
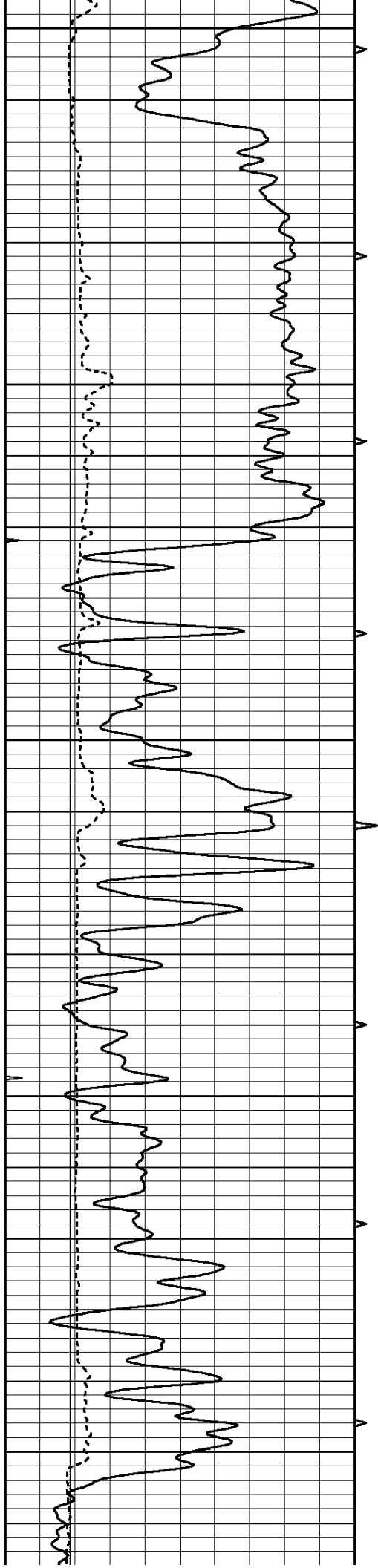
3150

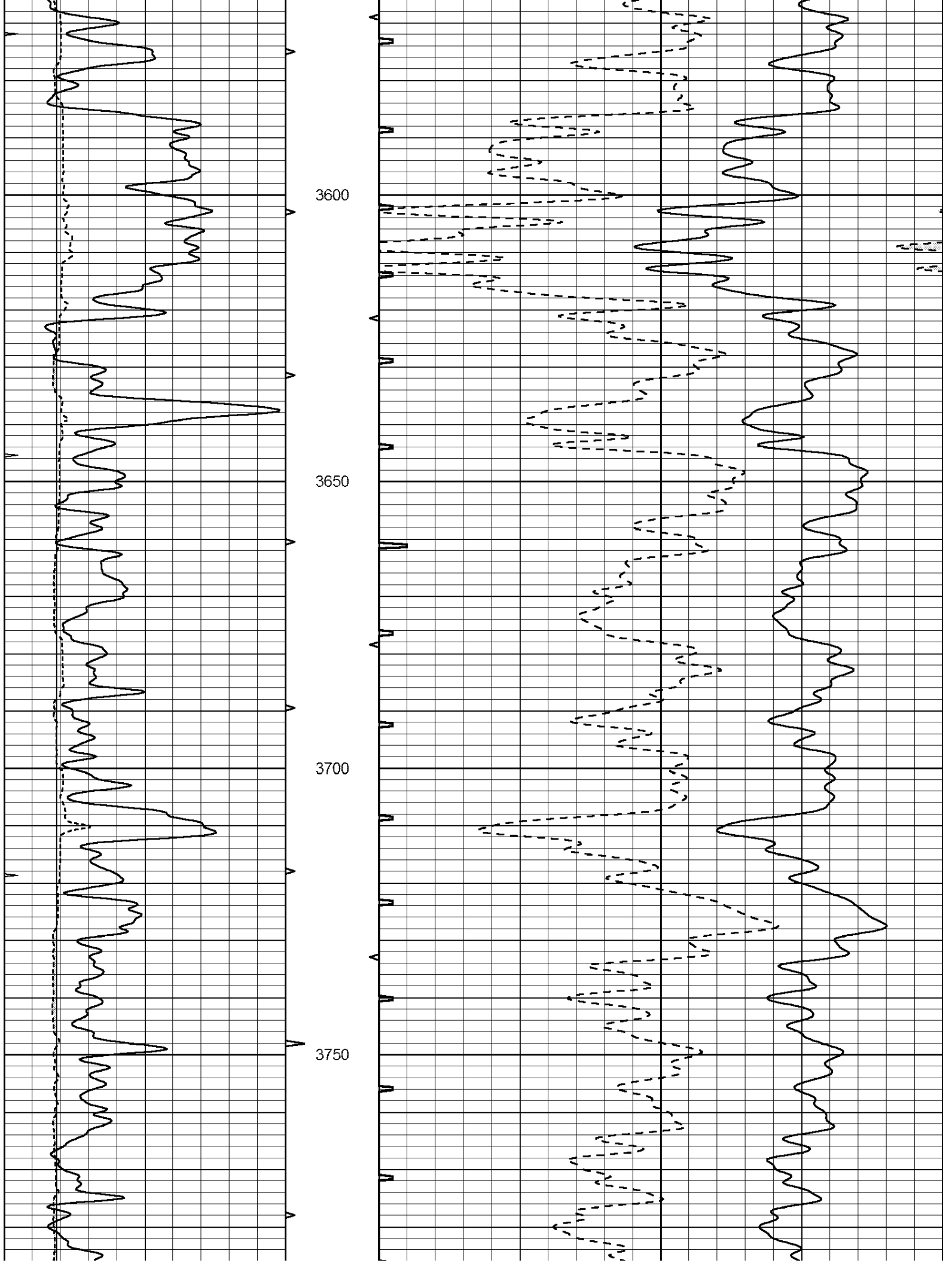
3200

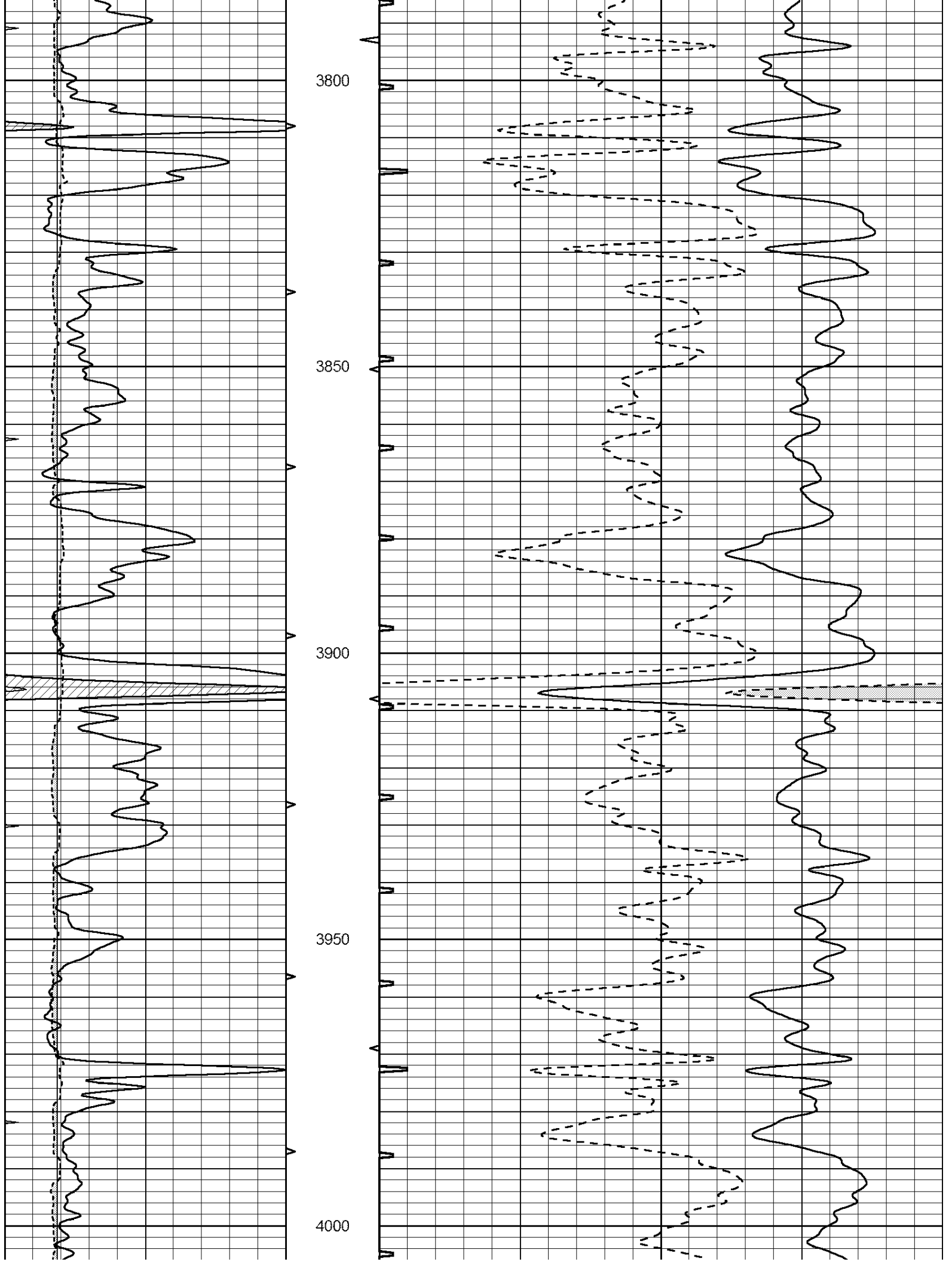
3250

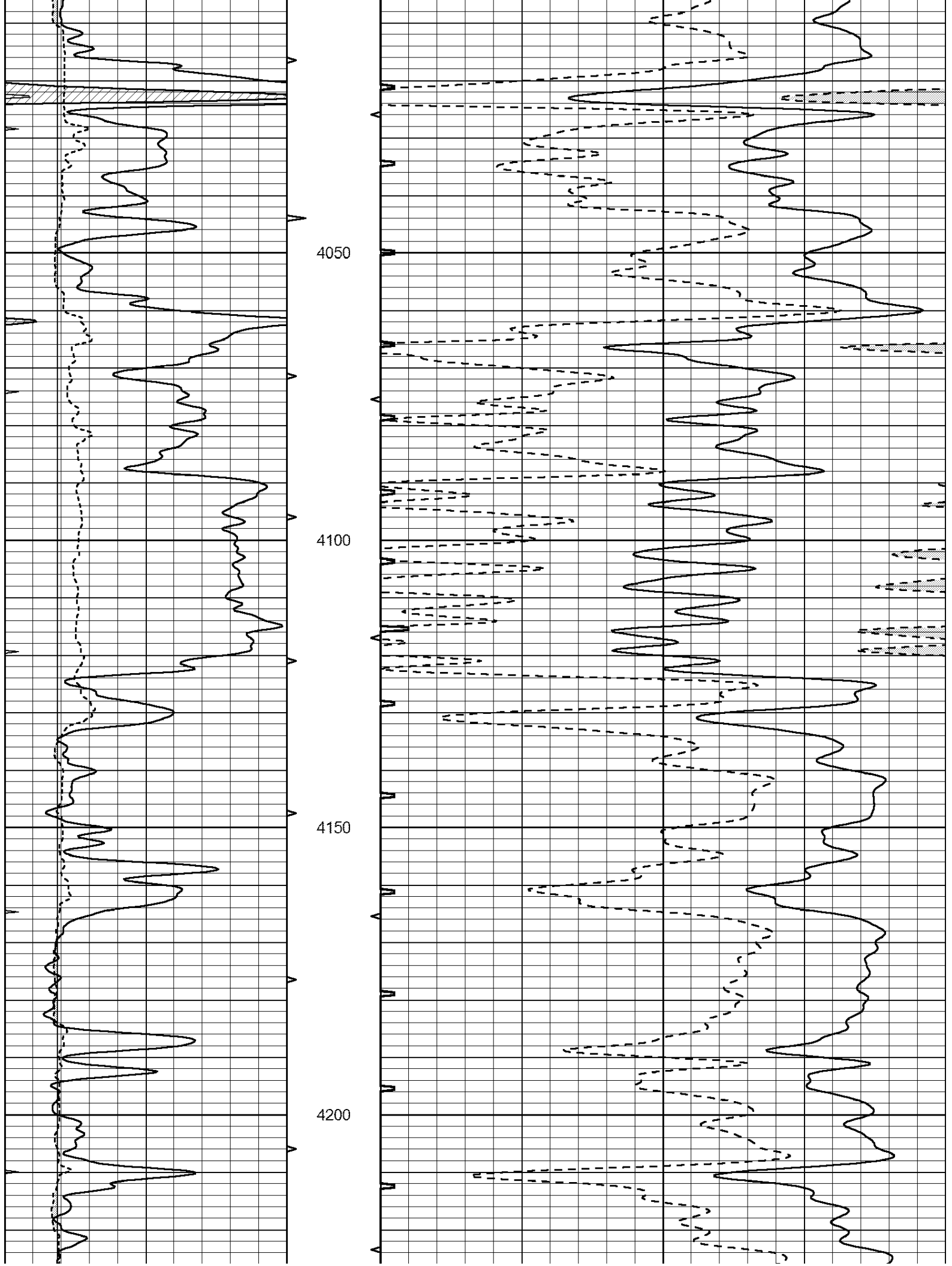
3300

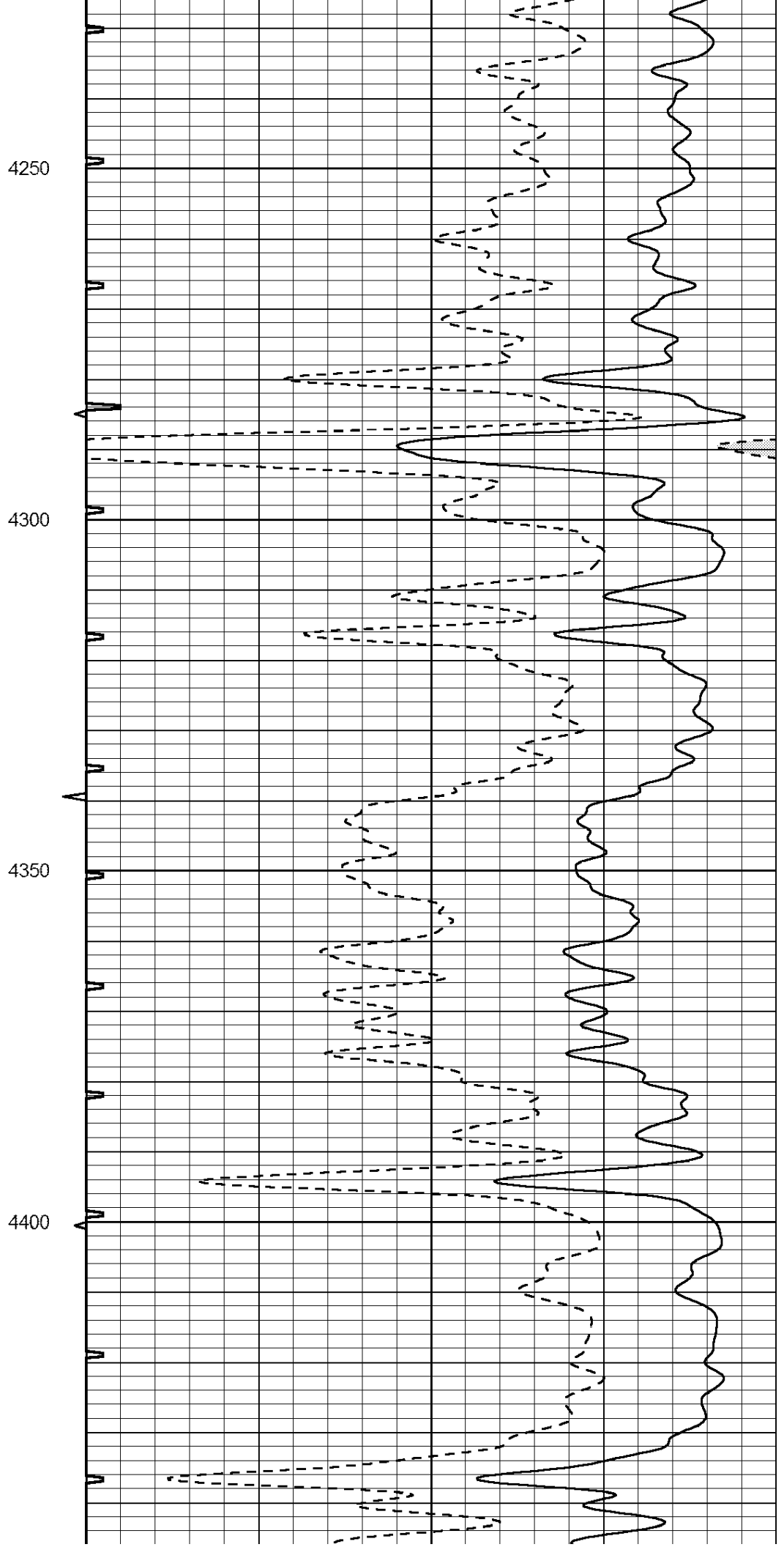
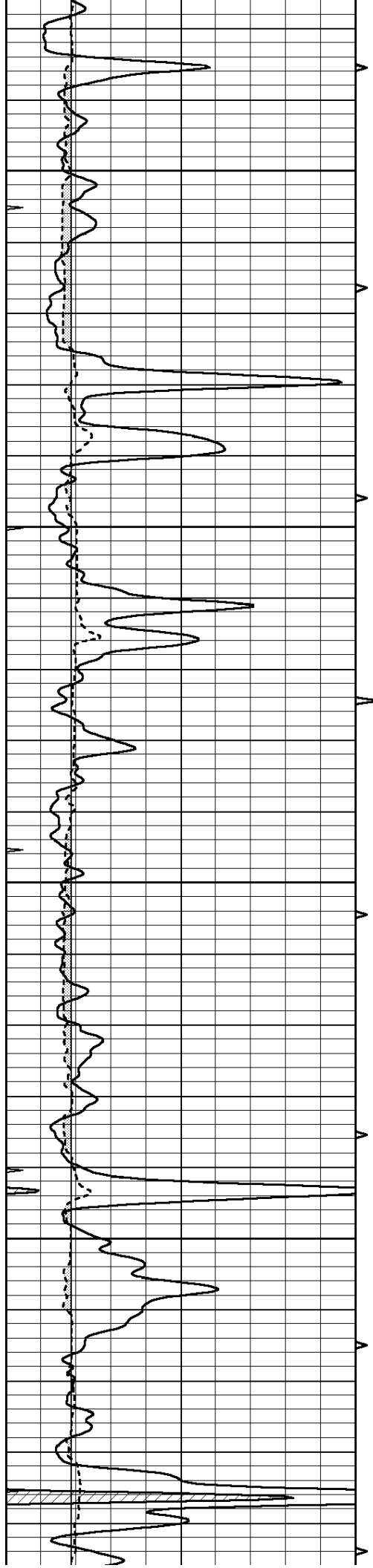


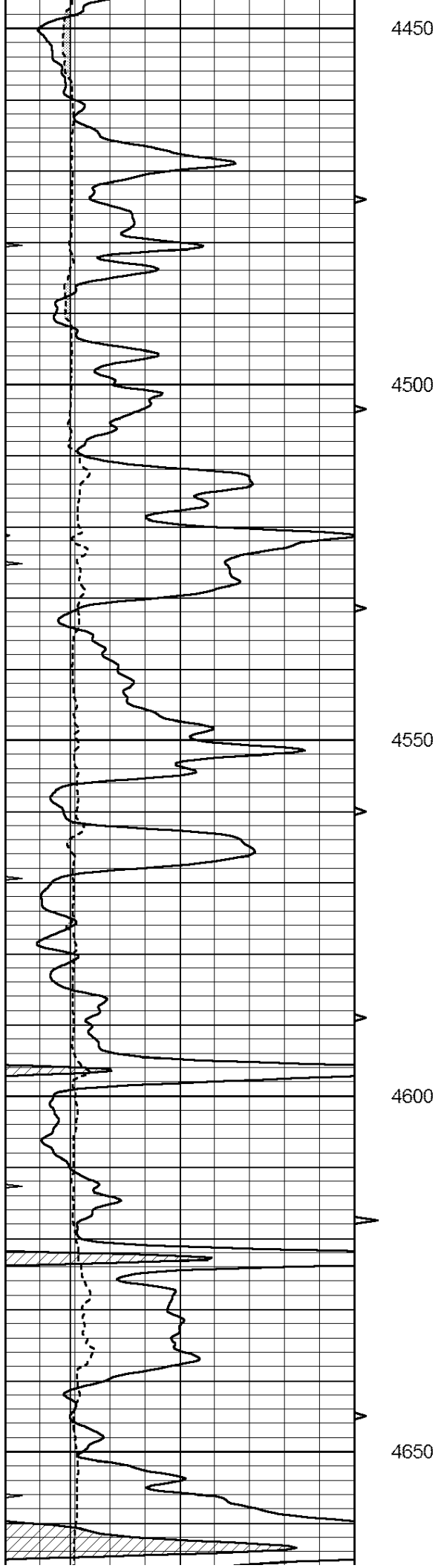












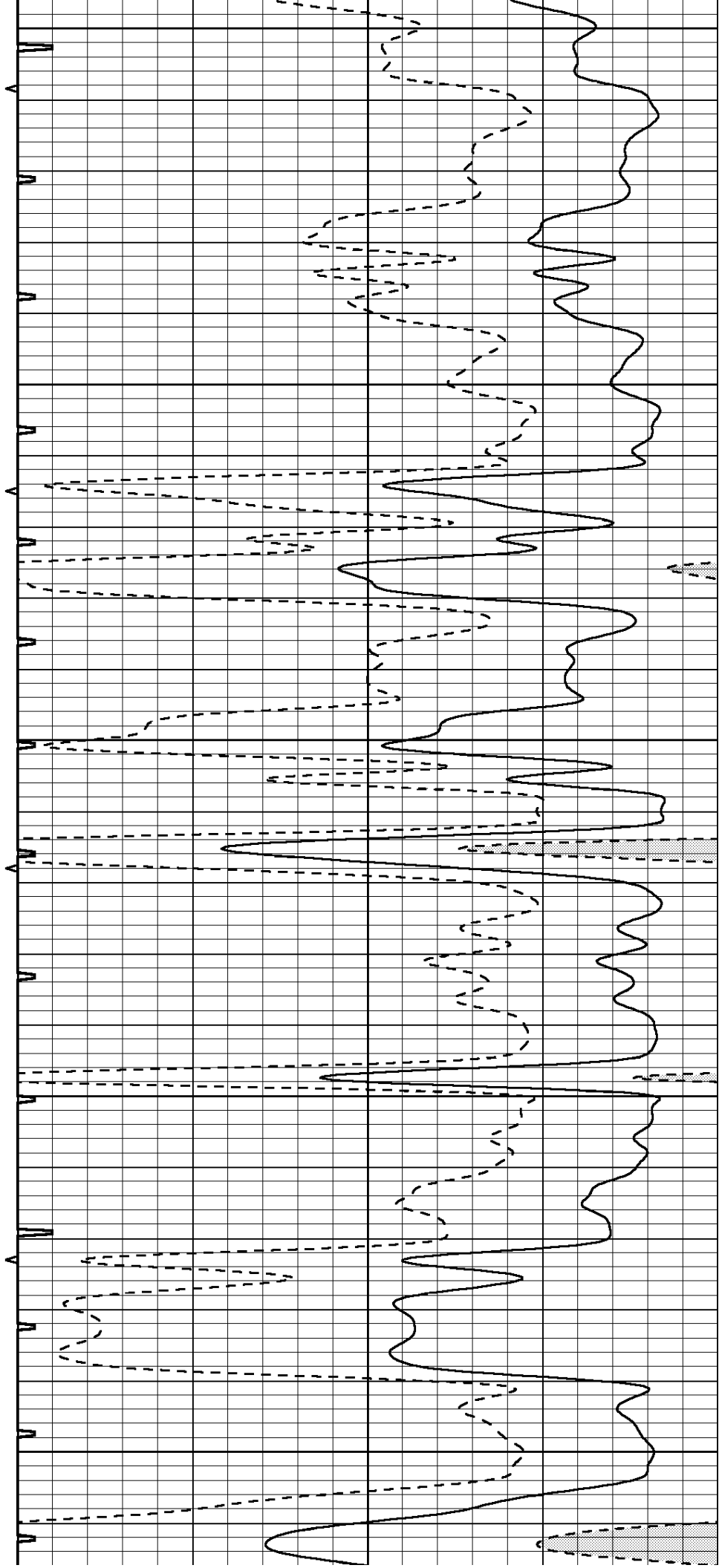
4450

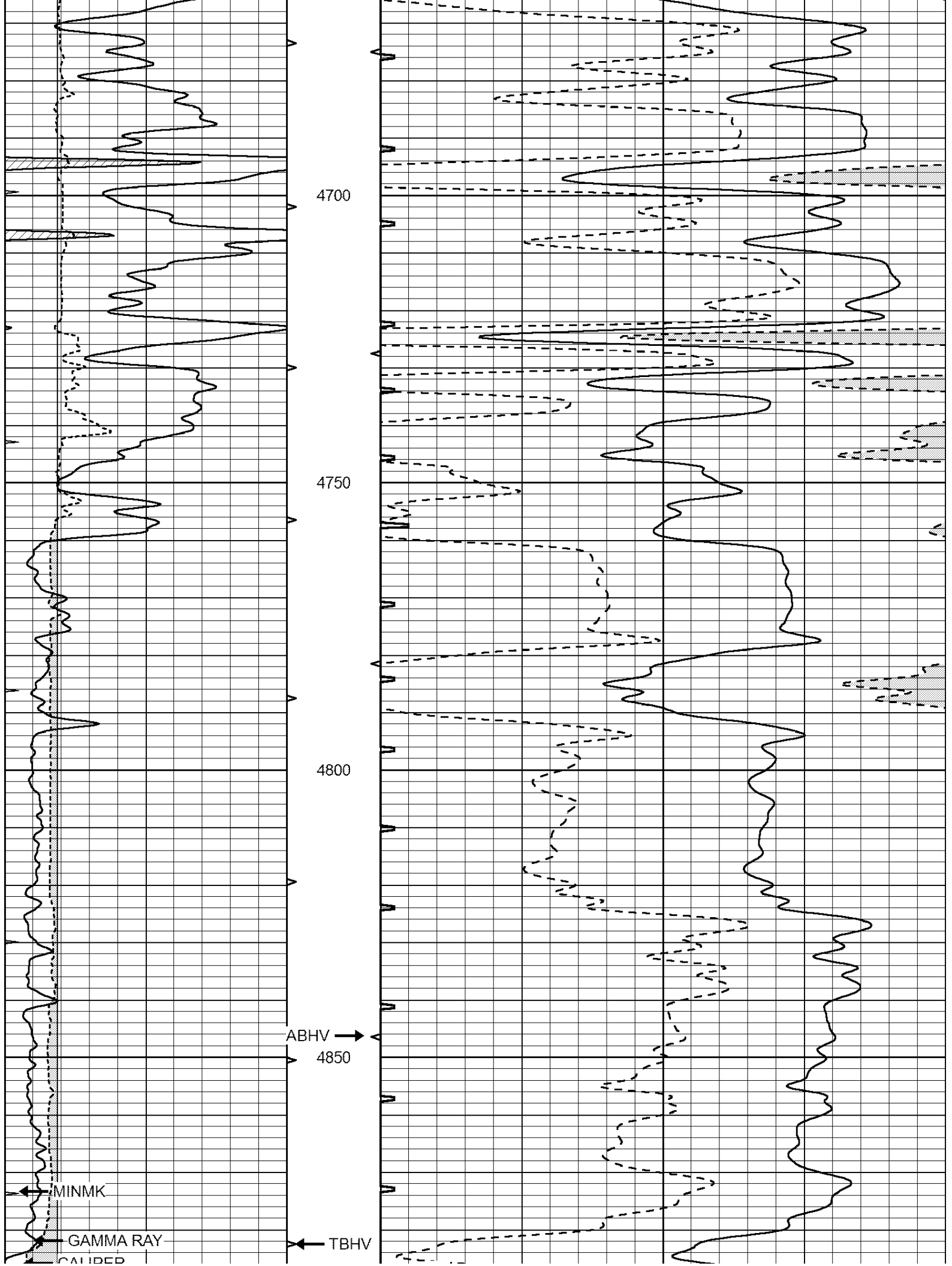
4500

4550

4600

4650





4700

4750

4800

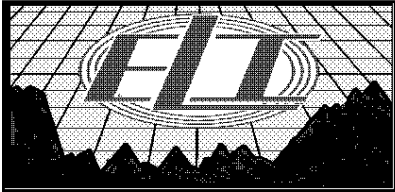
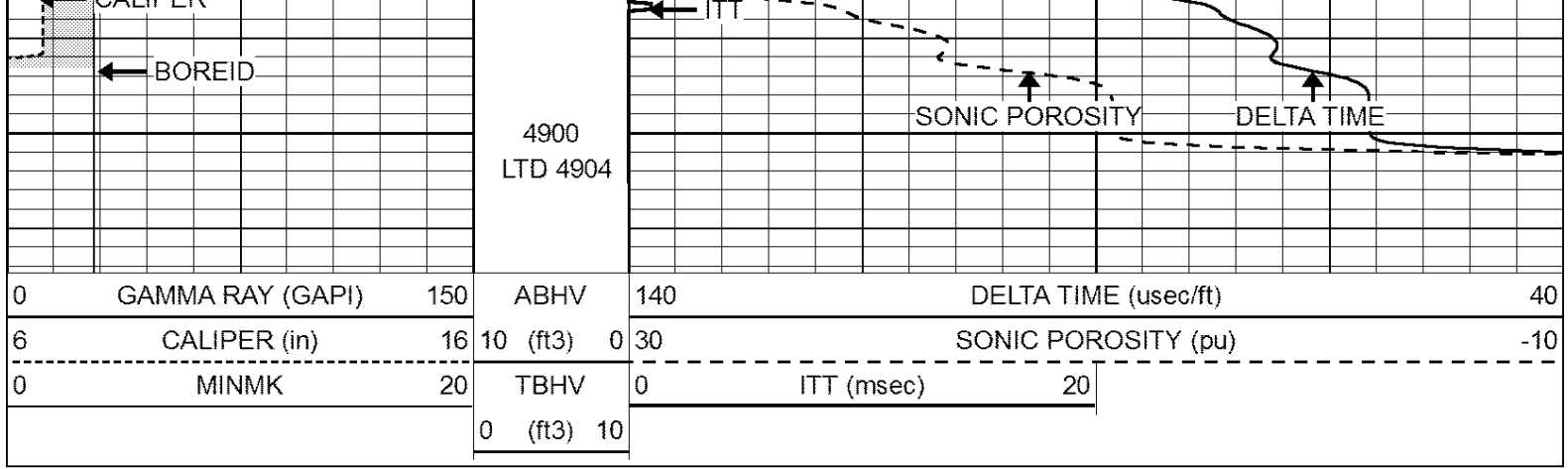
ABHV →
4850

MINMK

GAMMA RAY

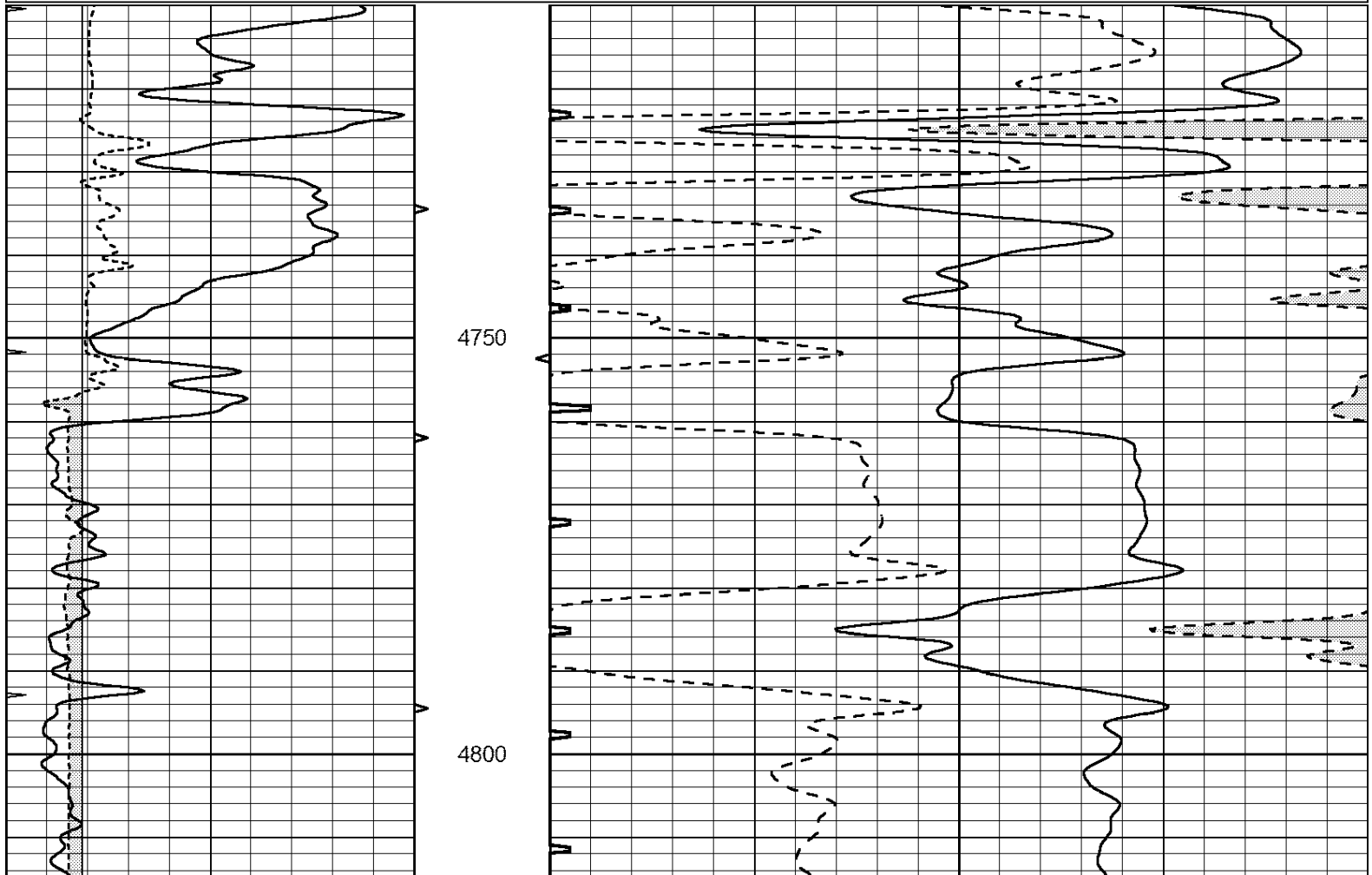
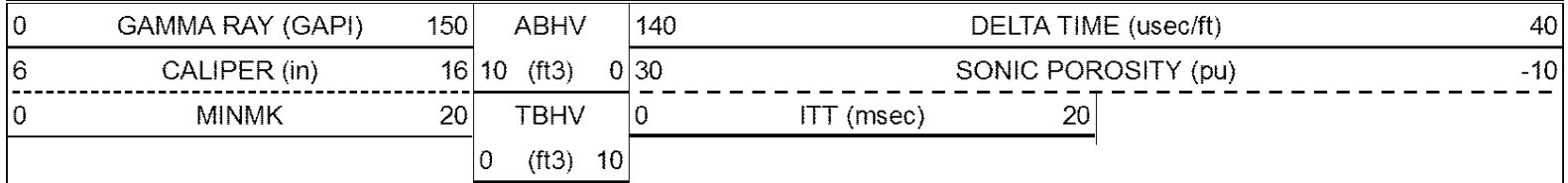
CALIBER

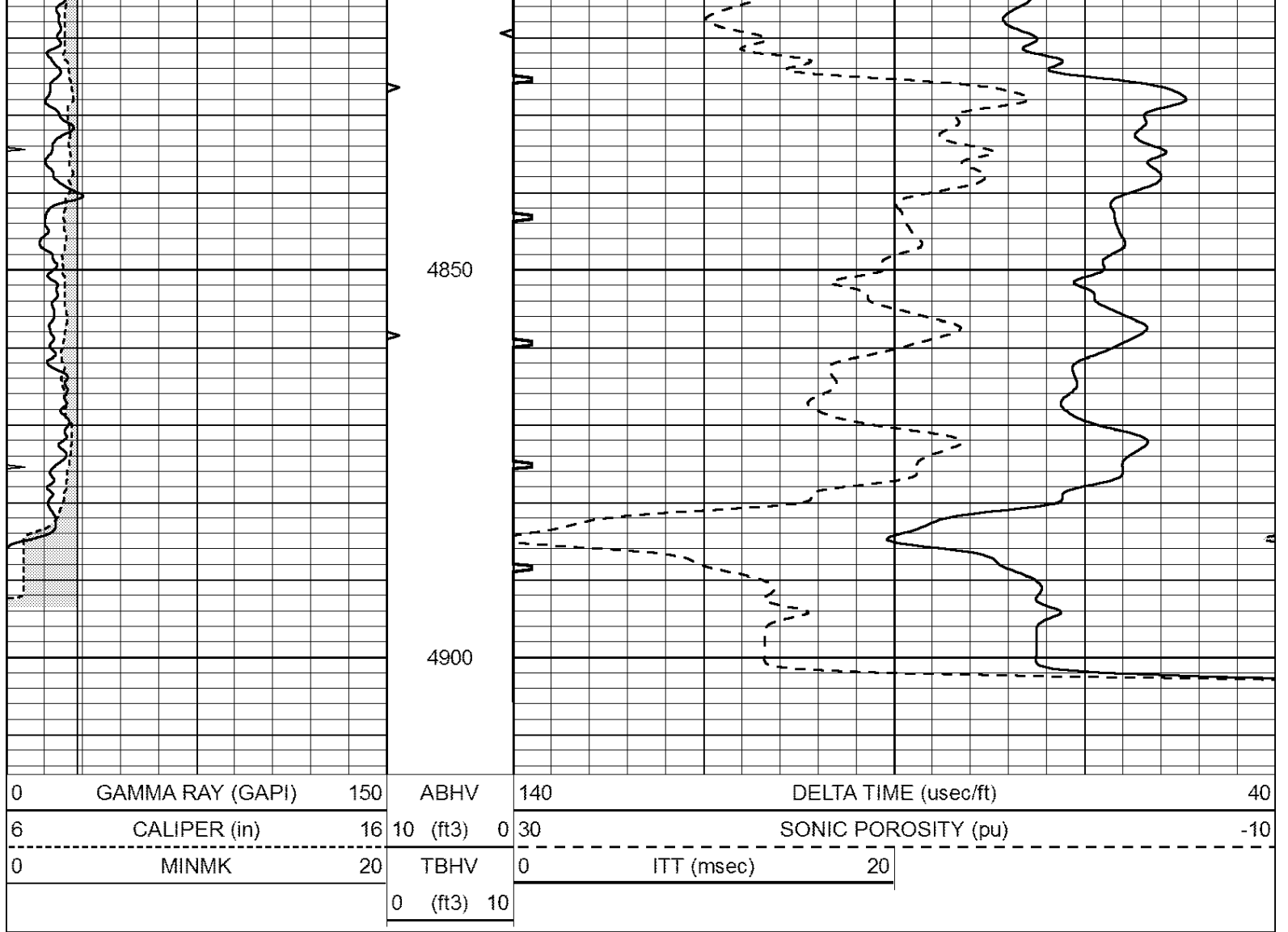
← TBHV



REPEAT SECTION

Database File: 2105pe.db
 Dataset Pathname: pass4.1
 Presentation Format: _slt
 Dataset Creation: Tue Oct 31 14:13:34 2017 by Calc Open-Cased 090629
 Charted by: Depth in Feet scaled 1:240





Calibration Report

Database File: 2105pe.db
 Dataset Pathname: pass4.1
 Dataset Creation: Tue Oct 31 14:13:34 2017 by Calc Open-Cased 090629

MICRO Calibration Report

Serial Number: MICRO6
 Tool Model: PROBE
 Performed: Wed Aug 16 17:13:39 2017

Caliper Calibration: Gain=3.960 Offset=4.551

References	Low Cal	High Cal
Readings	7.000	14.000
	0.555	2.323

1.5" Calibration: Gain=35.075 Offset=-0.400

References	Low Cal	High Cal
Readings	0.000	20.000
	0.004	1.196

2" Calibration: Gain=48.000 Offset=-1.000

References	Low Cal	High Cal
Readings	0.000	20.000
	0.006	0.913

Gamma Ray Calibration Report

Serial Number:	GR2	
Tool Model:	OPEN	
Performed:	Wed Aug 16 17:13:40 2017	
Calibrator Value:	1.0	GAPI
Background Reading:	0.0	cps
Calibrator Reading:	1.0	cps
Sensitivity:	0.3800	GAPI/cps