



MICRO LOG

Company WOOLSEY OPERATING COMPANY, LLC.  
 Well HUBBELL #2  
 Field BELLEFONT  
 County FORD  
 State KANSAS

Company WOOLSEY OPERATING COMPANY, LLC.  
 Well HUBBELL #2  
 Field BELLEFONT  
 County FORD State KANSAS

Location: API # : 15-057-20987-00-00  
 1578' FNL & 1207' FWL  
 SEC 23 TWP 25S RGE 21W  
 Permanent Datum GROUND LEVEL Elevation 2310'  
 Log Measured From KELLY BUSHING 12' A.G.L.  
 Drilling Measured From KELLY BUSHING  
 Other Services CDL/CNL/DIL SONIC  
 Elevation K.B. 2322'  
 D.F. 2320'  
 G.L. 2310'

Date	10/31/17
Run Number	TWO
Depth Driller	4900
Depth Logger	4904
Bottom Logged Interval	4884
Top Log Interval	4000
Casing Driller	8 5/8" @ 789
Casing Logger	789
Bit Size	7 7/8"
Type Fluid in Hole	CHEMICAL MUD
Density / Viscosity	9.3/54
pH / Fluid Loss	9.5/9.6
Source of Sample	FLOWLINE
Rm @ Meas. Temp	.60@52
Rmt @ Meas. Temp	.45@52
Rmc @ Meas. Temp	.72@52
Source of Rmf / Rmc	MEASURED
Rm @ BHT	25@124
Time Circulation Stopped	2 HOURS
Time Logger on Bottom	///
Maximum Recorded Temperature	124F
Equipment Number	4010
Location	HAYS, KANSAS
Recorded By	GUS PFANENSTIEL
Witnessed By	BILLY KLAVER

<<< Fold Here >>>

All interpretations are opinions based on inferences from electrical or other measurements and we cannot and do not guarantee the accuracy or correctness of any interpretation, and we shall not, except in the case of gross or willful negligence on our part, be liable or responsible for any loss, costs, damages, or expenses incurred or sustained by anyone resulting from any interpretation made by any of our officers, agents or employees. These interpretations are also subject to our general terms and conditions set out in our current Price Schedule.

Comments

THANK YOU FOR USING ELI WIRELINE, HAYS, KS. (785) 628-6395

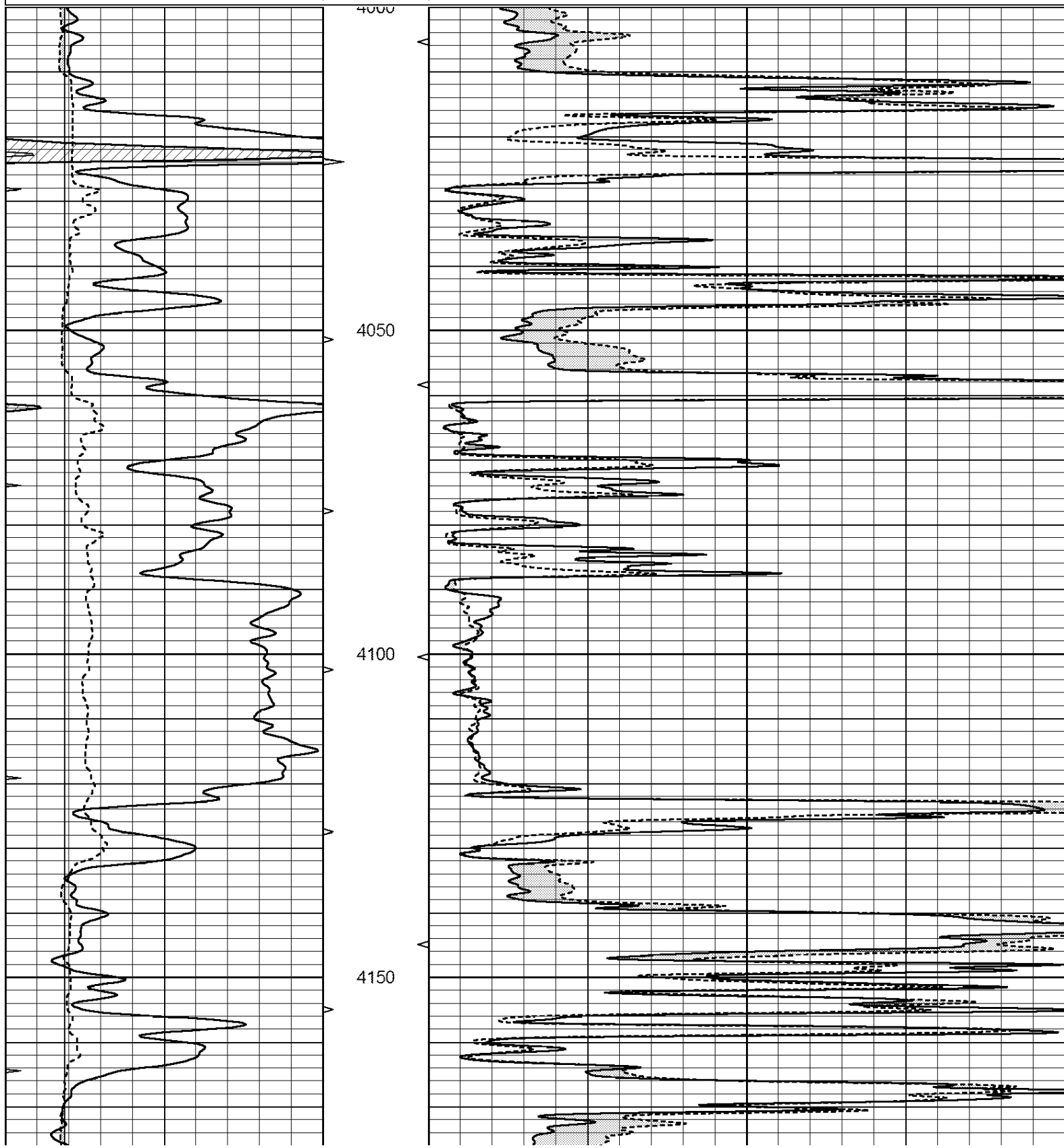
DIRECTIONS  
 OFFERLE WEST TO RD 134,  
 SOUTH 1.5 MILES, EAST INTO.

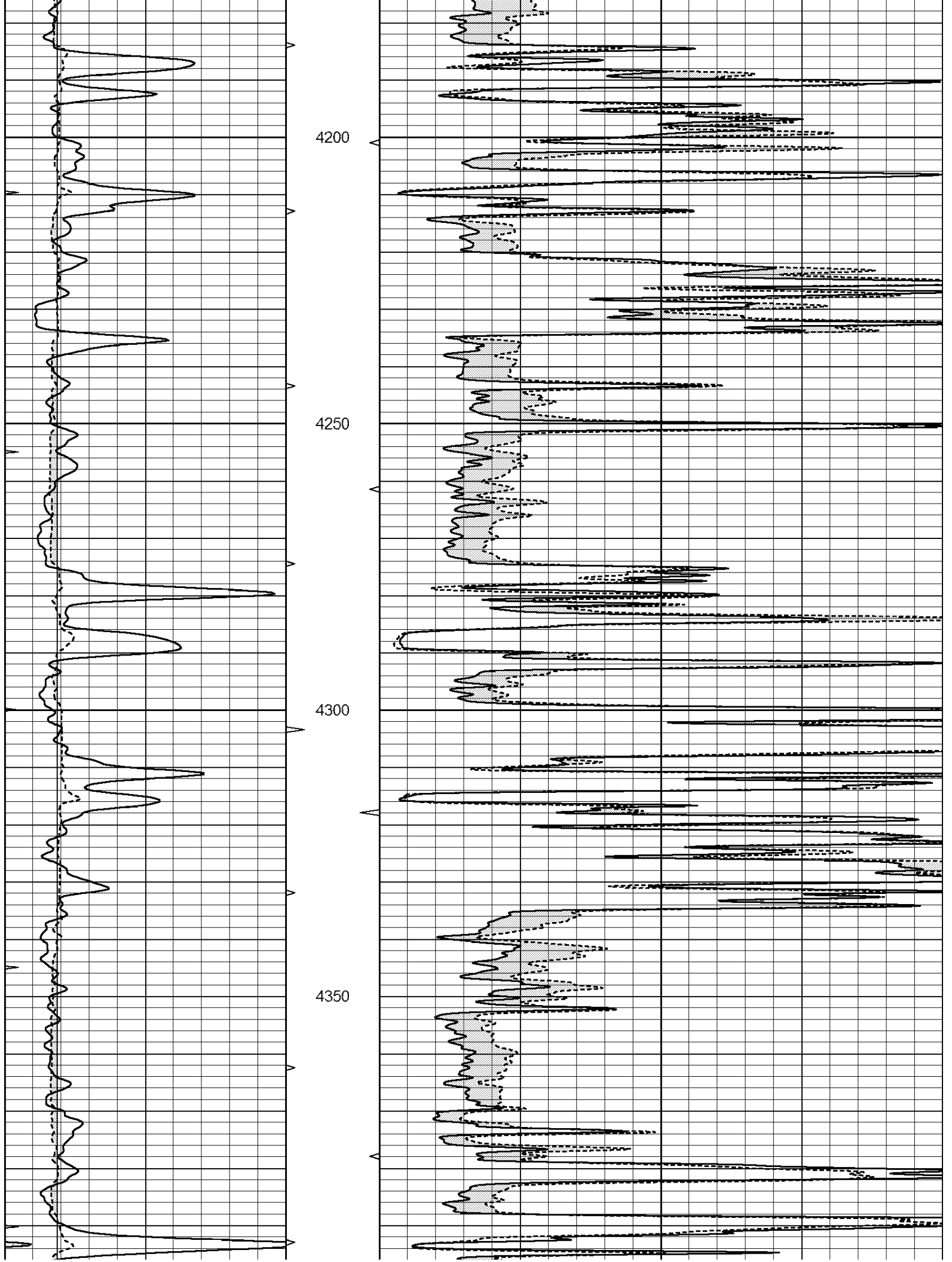


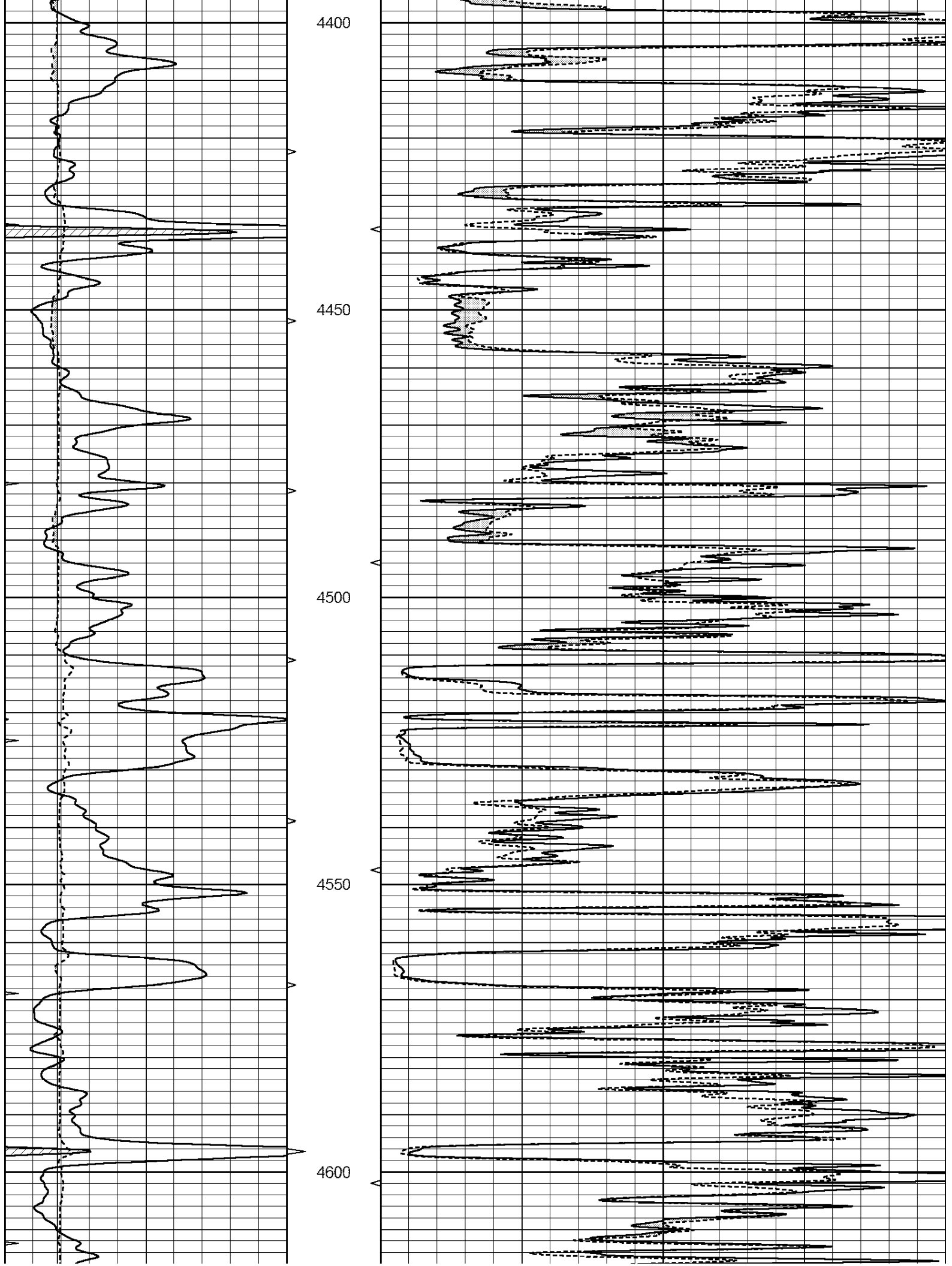
MAIN PASS

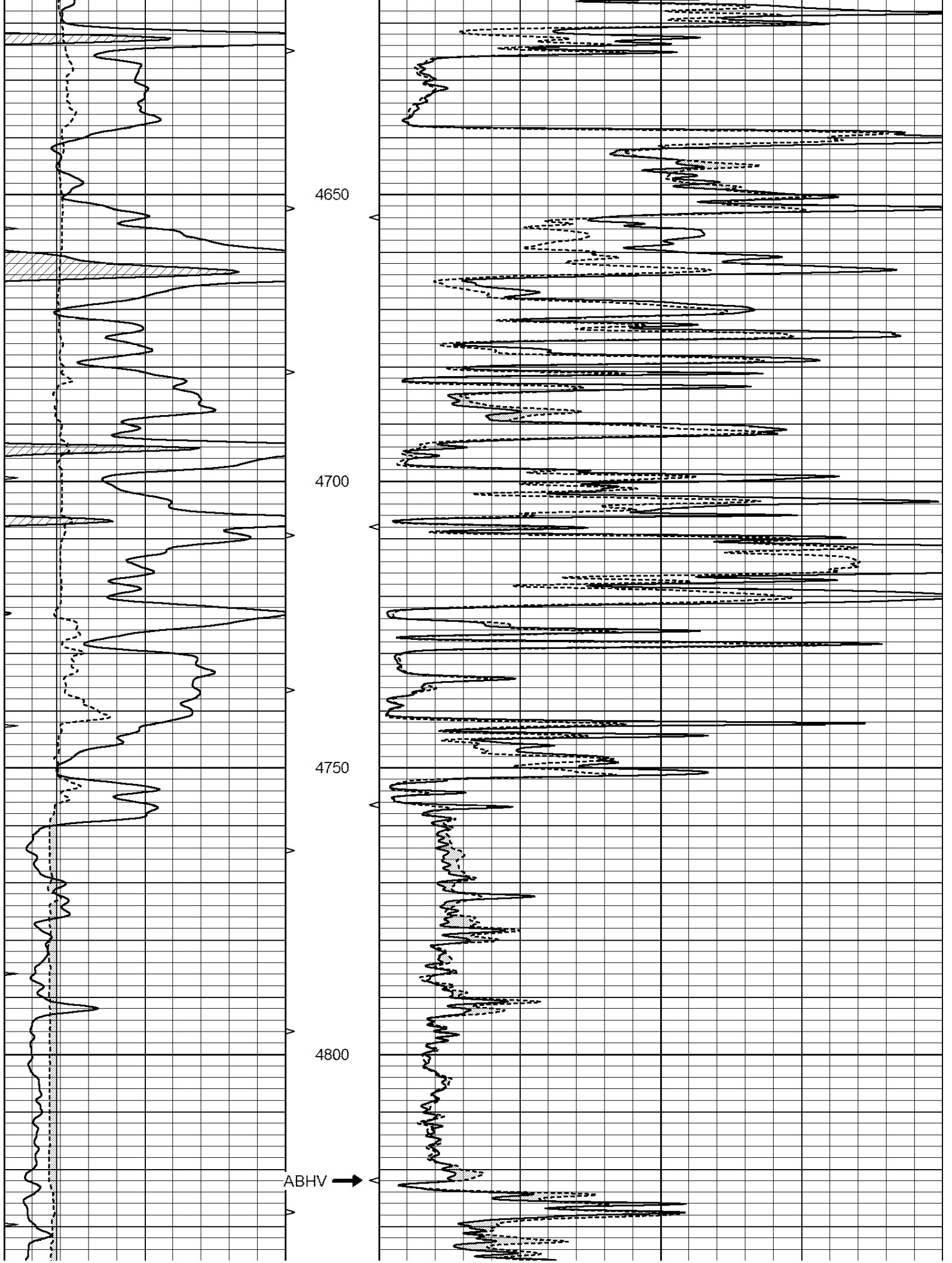
Database File: 2105pe.db  
 Dataset Pathname: pass5MIC  
 Presentation Format: \_micro  
 Dataset Creation: Tue Oct 31 14:15:01 2017 by Calc Open-Cased 090629  
 Charted by: Depth in Feet scaled 1:240

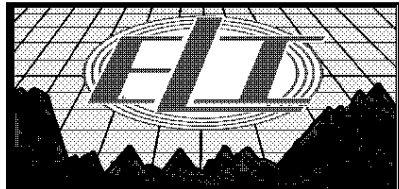
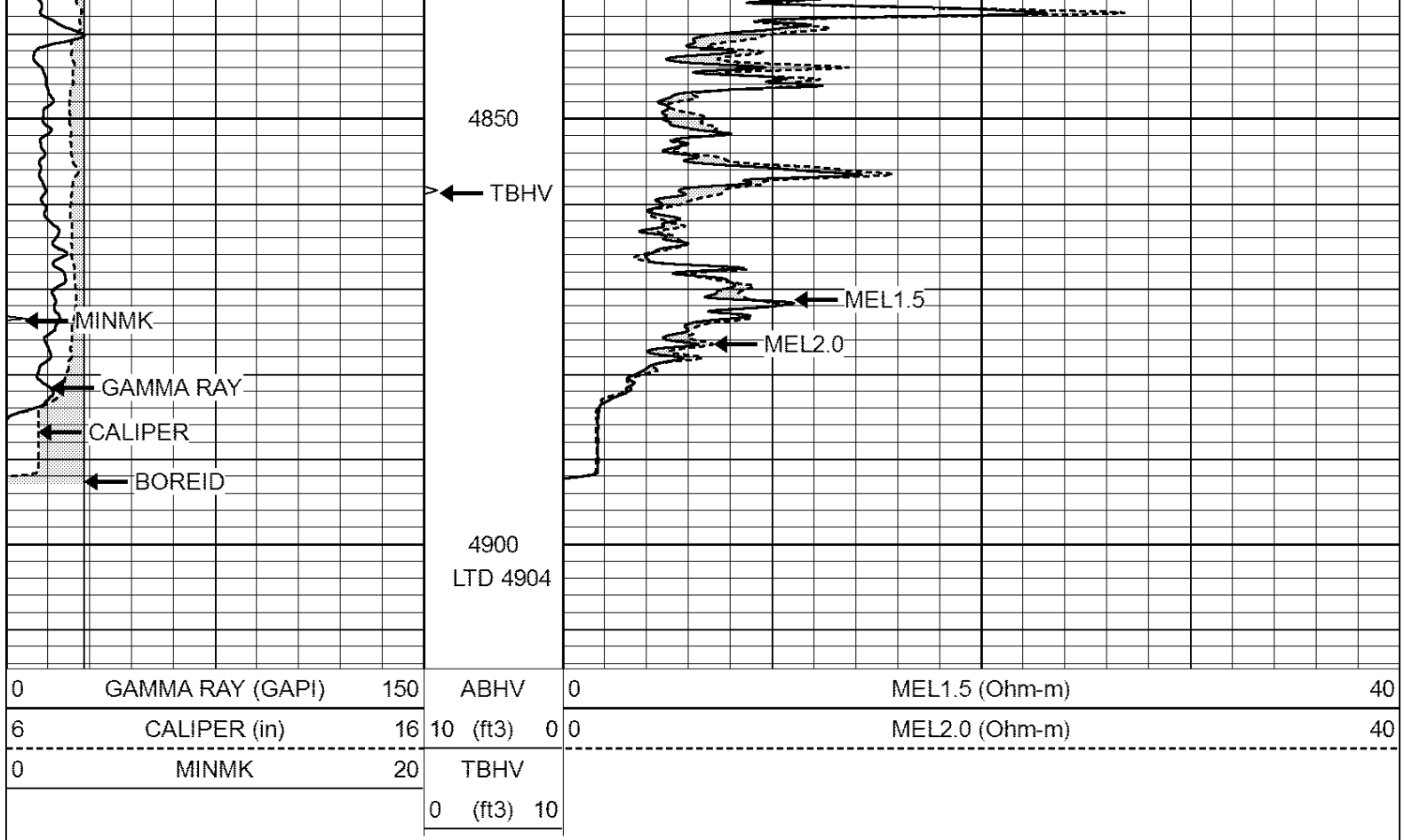
0	GAMMA RAY (GAPI)	150	ABHV	0	MEL1.5 (Ohm-m)	40
6	CALIPER (in)	16	10 (ft3)	0	MEL2.0 (Ohm-m)	40
0	MINMK	20	TBHV			
			0 (ft3)	10		







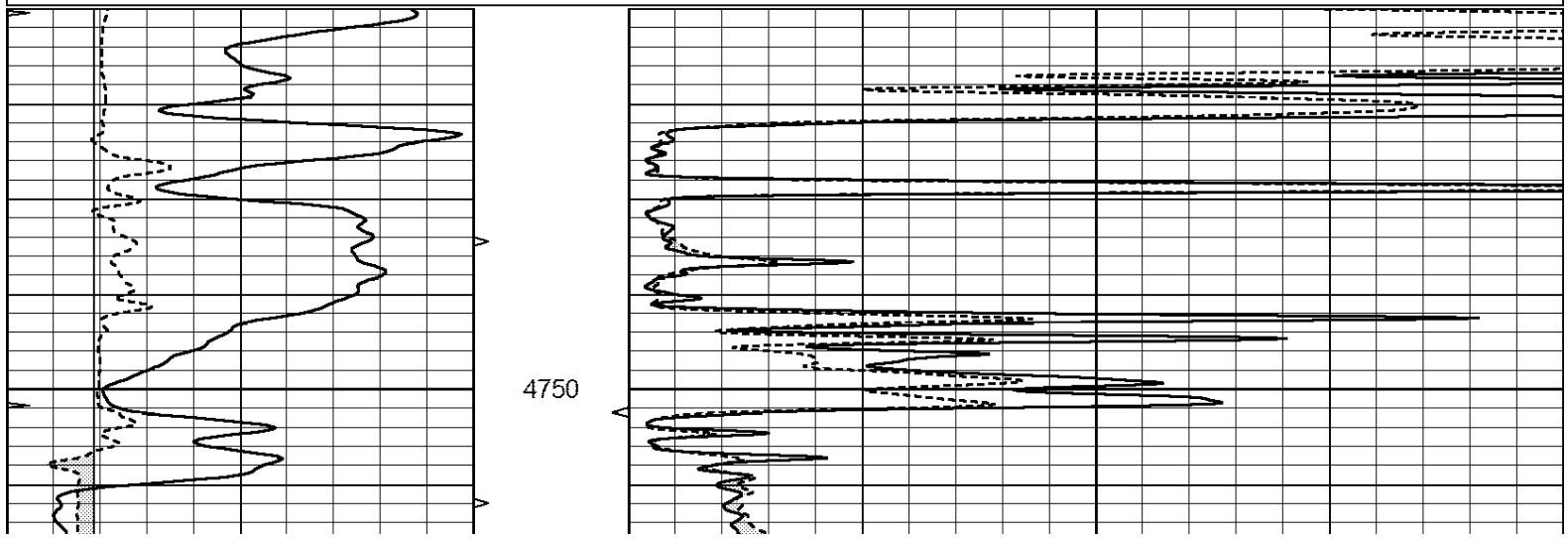


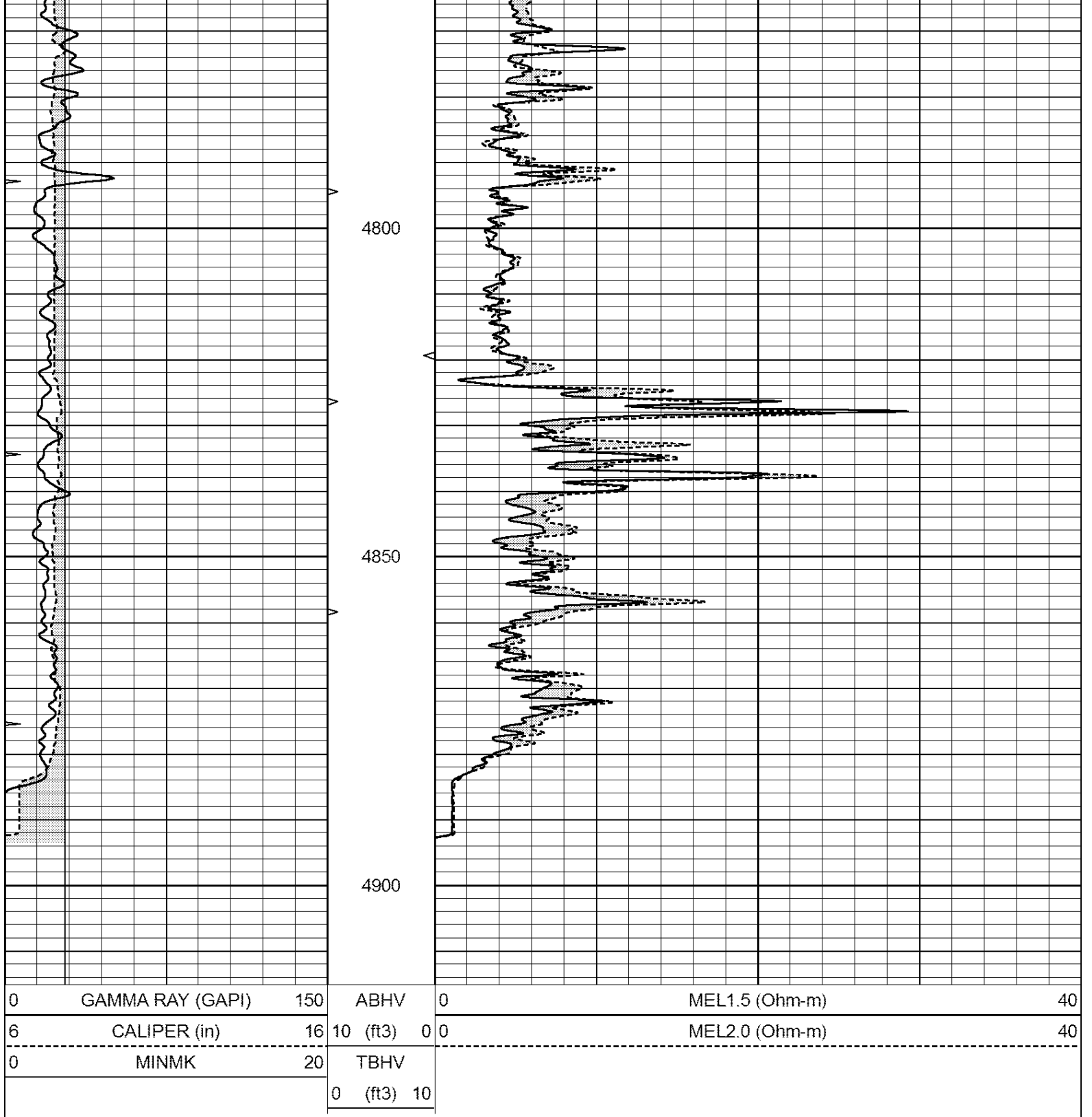


# REPEAT SECTION

Database File: 2105pe.db  
 Dataset Pathname: pass4.1  
 Presentation Format: \_micro  
 Dataset Creation: Tue Oct 31 14:13:34 2017 by Calc Open-Cased 090629  
 Charted by: Depth in Feet scaled 1:240

0	GAMMA RAY (GAPI)	150	ABHV	0	MEL1.5 (Ohm-m)	40
6	CALIPER (in)	16	10 (ft3)	0	MEL2.0 (Ohm-m)	40
0	MINMK	20	TBHV			
			0 (ft3)	10		





### Calibration Report

Database File: 2105pe.db  
 Dataset Pathname: pass4.1  
 Dataset Creation: Tue Oct 31 14:13:34 2017 by Calc Open-Cased 090629

### MICRO Calibration Report

Serial Number: MICRO6  
 Tool Model: PROBE  
 Performed: Wed Aug 16 17:13:39 2017

Caliper Calibration: Gain=3.960      Offset=4.551

Low Cal      High Cal

References	Low Cal 7.000	High Cal 14.000
Readings	0.555	2.323
1.5" Calibration:	Gain=35.075	Offset=-0.400
References	Low Cal 0.000	High Cal 20.000
Readings	0.004	1.196
2" Calibration:	Gain=48.000	Offset=-1.000
References	Low Cal 0.000	High Cal 20.000
Readings	0.006	0.913
Gamma Ray Calibration Report		
Serial Number:	GR2	
Tool Model:	OPEN	
Performed:	Wed Aug 16 17:13:40 2017	
Calibrator Value:	1.0	GAPI
Background Reading:	0.0	cps
Calibrator Reading:	1.0	cps
Sensitivity:	0.3800	GAPI/cps