



# GAMMA RAY / CALIPER LOG

**Company** CARMEN SCHMITT, INC  
**Well** WP UNIT NO. 4-7  
**Field** N/A  
**County** TREGO **State** KANSAS

Company CARMEN SCHMITT, INC  
 Well WP UNIT NO. 4-7  
 Field N/A  
 County TREGO  
 State KANSAS

<b>Location:</b> 775' FSL & 1690' FWL SEC 7 TWP 14S RGE 25W	<b>API #:</b> 15-195-23033-00-00 <b>Other Services</b> DIL MEL
<b>Permanent Datum</b> GROUND LEVEL Elevation 2430' <b>Log Measured From</b> KELLY BUSHING <b>Drilling Measured From</b> KELLY BUSHING	<b>Elevation</b> K.B. 2435' D.F. N/A G.L. 2430'

Date	12/12/2017			
Run Number	ONE			
Type Log	BHV			
Depth Driller	4360'			
Depth Logger	4360'			
Bottom Logged Interval	4331'			
Top Logged Interval	200'			
Type Fluid In Hole	CHEMICAL			
Salinity, PPM CL	900			
Density	9.2			
Level	FULL			
Max. Rec. Temp. F	120 DEGF			
Operating Rig Time	2 HOURS			
Equipment -- Location	108 HAYS			
Recorded By	J. HENRICKSON			
Witnessed By	BRAD RINE			

Borehole Record		Casing Record					
Run No.	Bit	From	To	Size	Wgt.	From	To
ONE	12.25"	0	218'	8.625"	23#	0	218'
TWO	7.875"	218'					

<<< Fold Here >>>

All interpretations are opinions based on inferences from electrical or other measurements and Pioneer Wireline Services, LLC cannot and does not guarantee the accuracy or correctness of any interpretation, and Pioneer Wireline Services, LLC will not be liable or responsible for any loss, costs, damages, or expenses incurred or sustained by anyone resulting from any interpretation made by any of our officers, agents or employees.

**Comments**

N/A DENOTES NOT AVAILABLE OR NON-APPLICABLE.  
  
 COLLYER KANSAS  
 12 1/2 SOUTH, 3/4 WEST, NORTH INTO

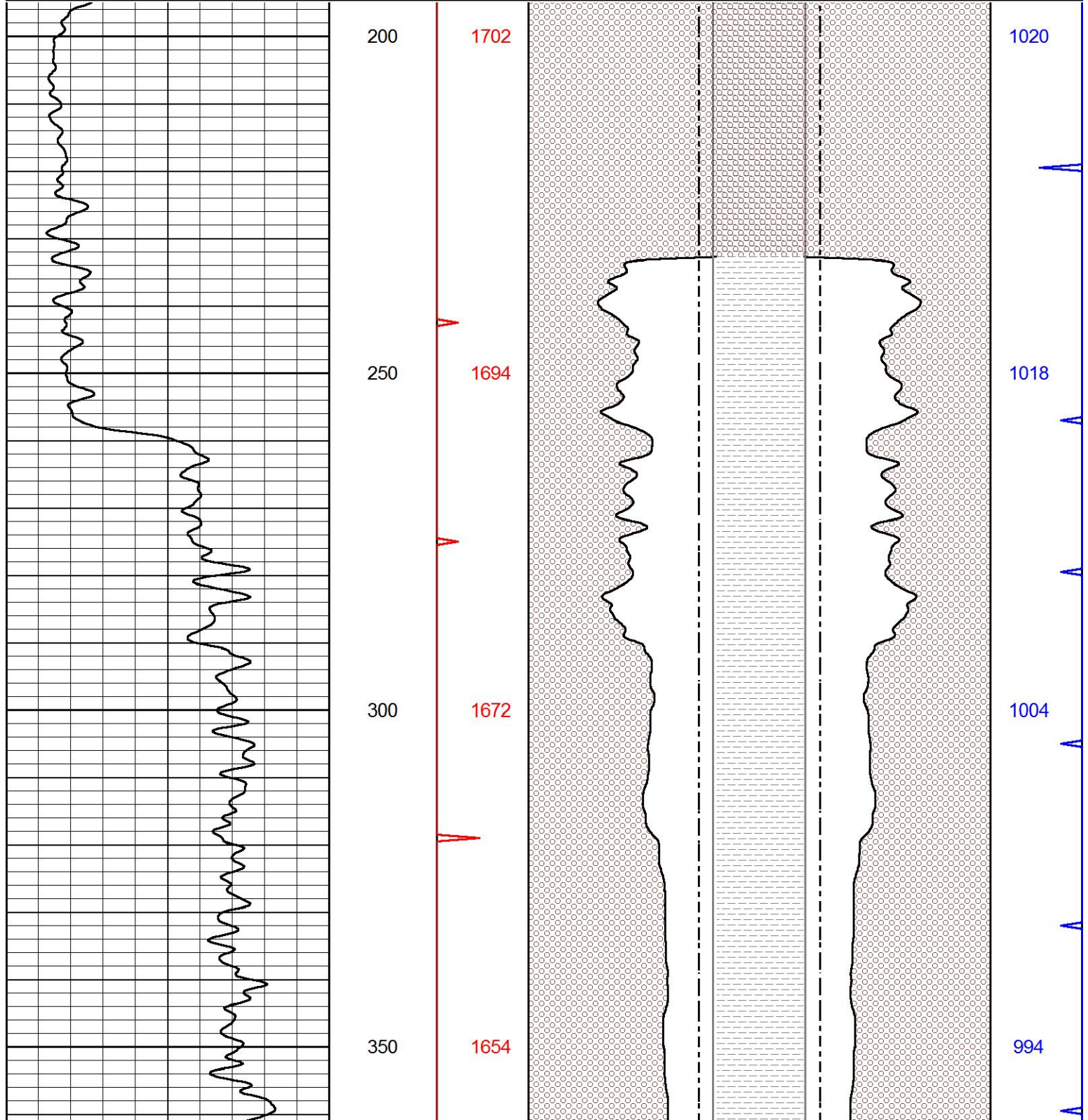
Log Measured From: KELLY BUSHING      5 Ft. Above Permanent Datum  
  
 THANK YOU FOR USING PIONEER ENERGY SERVICES  
 www.pioneerenergy.com      785-625-3858

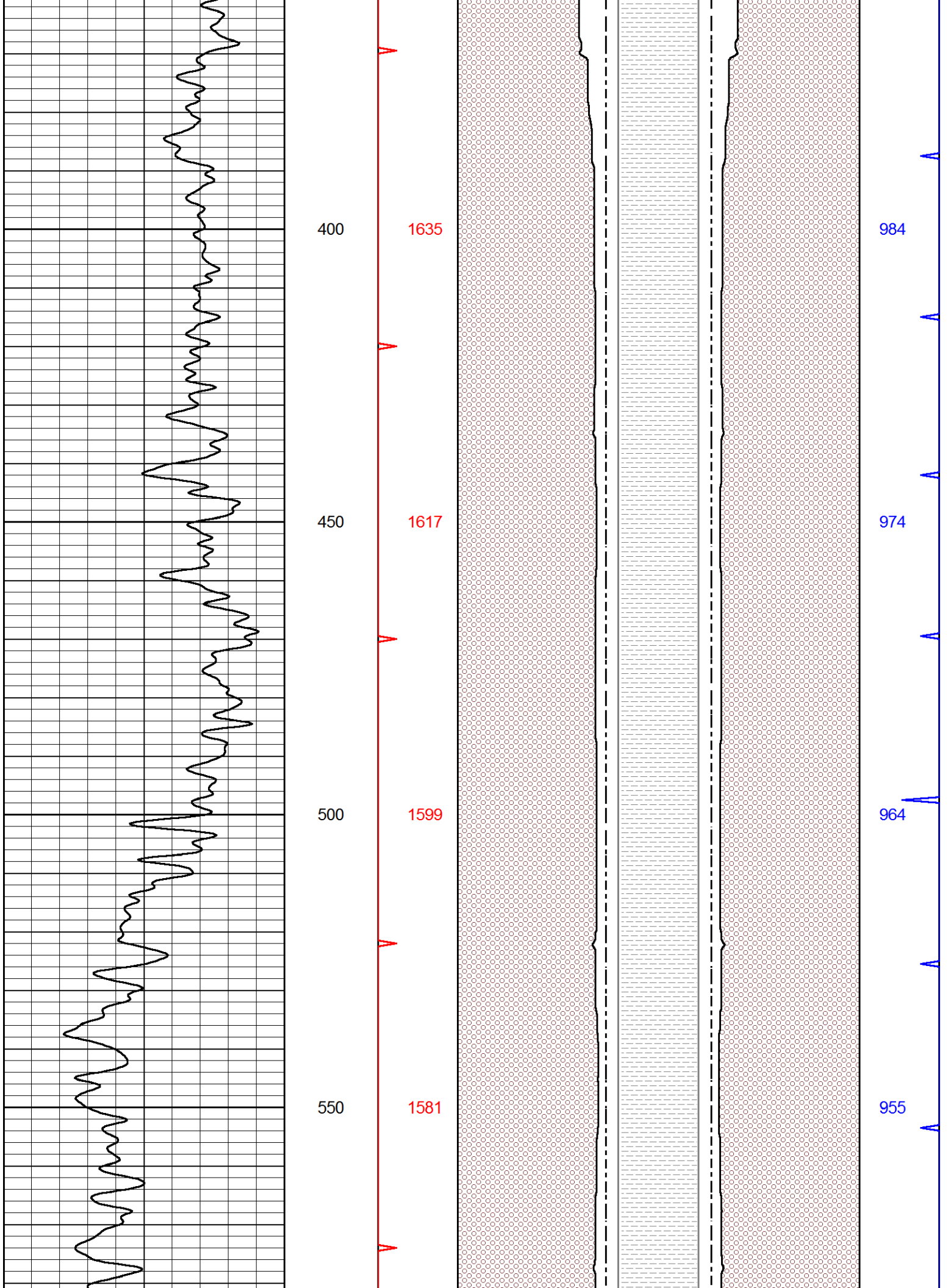
<b>Your Pioneer Energy Services Crew</b> Engineer: J. HENRICKSON Operator: Operator: Operator:	<b>This Log Record Was Witnessed By</b> Primary Witness: BRAD RINE Secondary Witness: Secondary Witness: Secondary Witness:
--	---

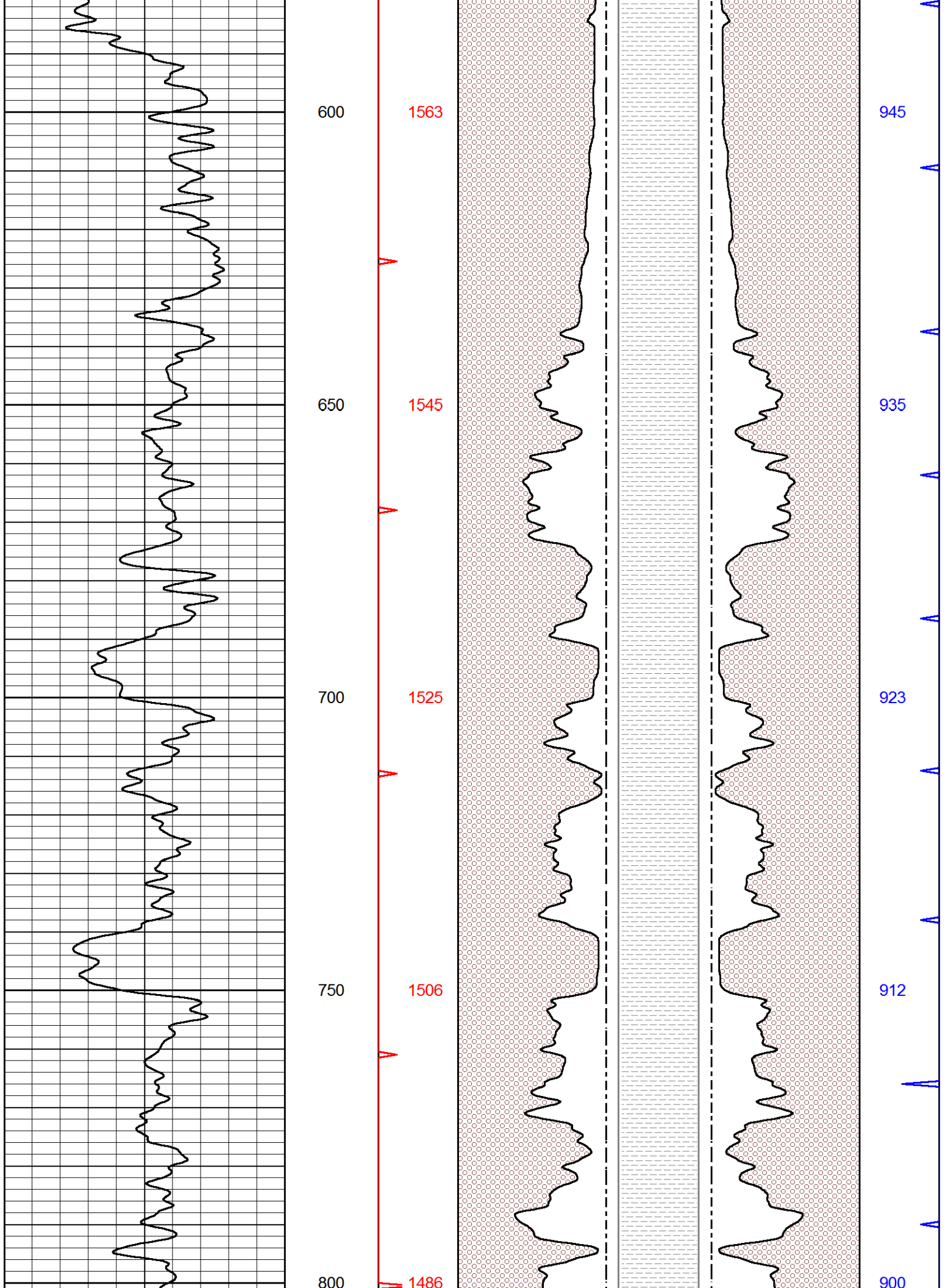
# MAIN PASS

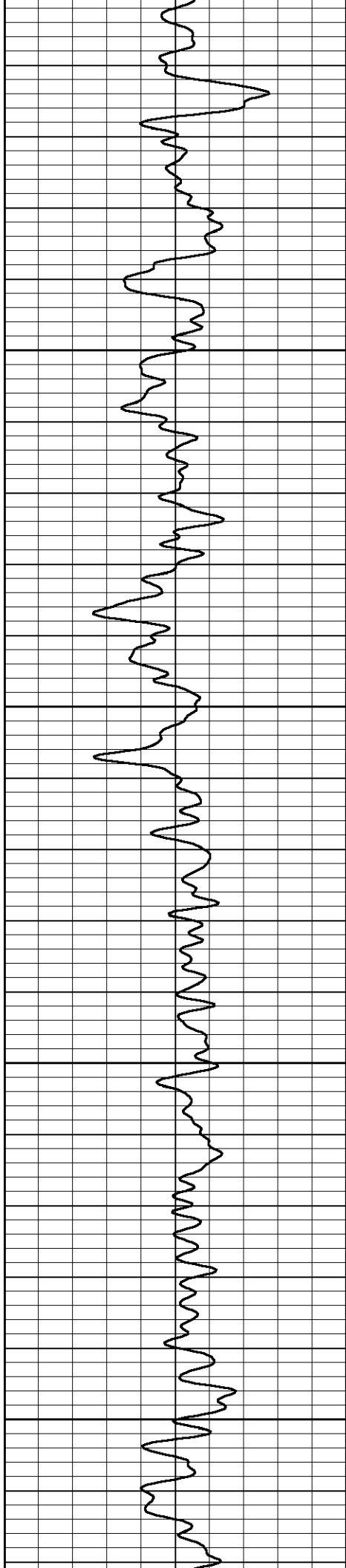
Database File      carmenschmitt\_wp\_unit\_3\_7.db  
 Dataset Pathname    stackml/pass3.1  
 Presentation Format   bhv5half  
 Dataset Creation    Tue Dec 12 05:32:38 2017  
 Charted by          Depth in Feet scaled 1:240

0	GAMMA RAY (GAPI)	150	16	CALIPER (in)	6	6	CALIPER (in)	16
			16	BIT SIZE	6	6	BIT SIZE	16
			0	AVTX (ft3)	15	15	BVTX (ft3)	0







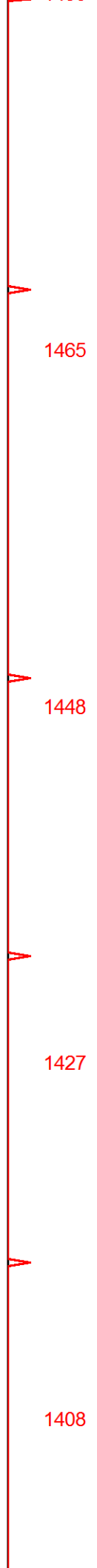


850

900

950

1000

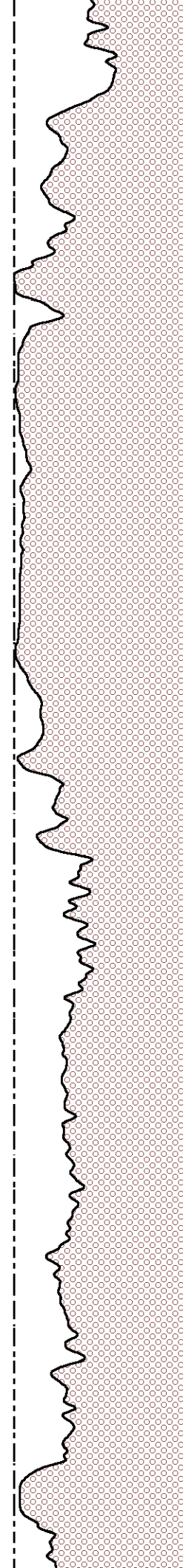
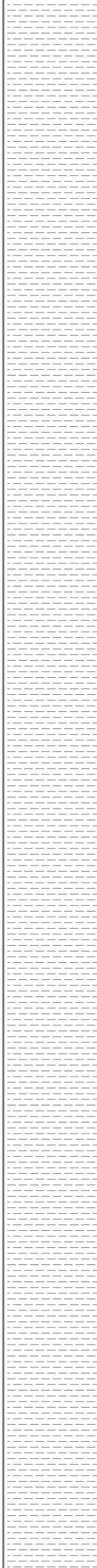
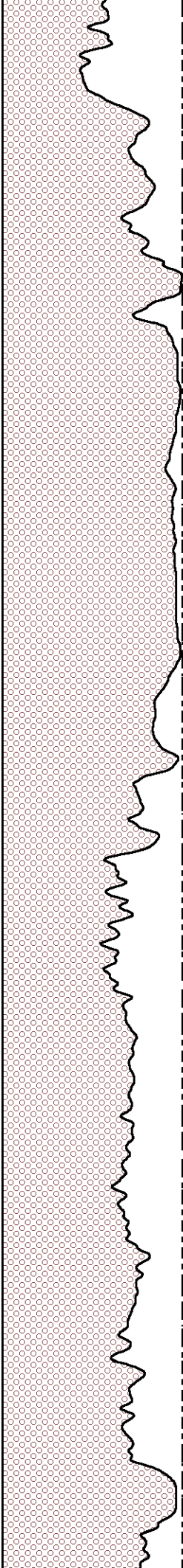


1465

1448

1427

1408

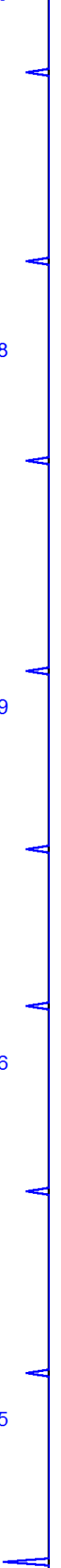


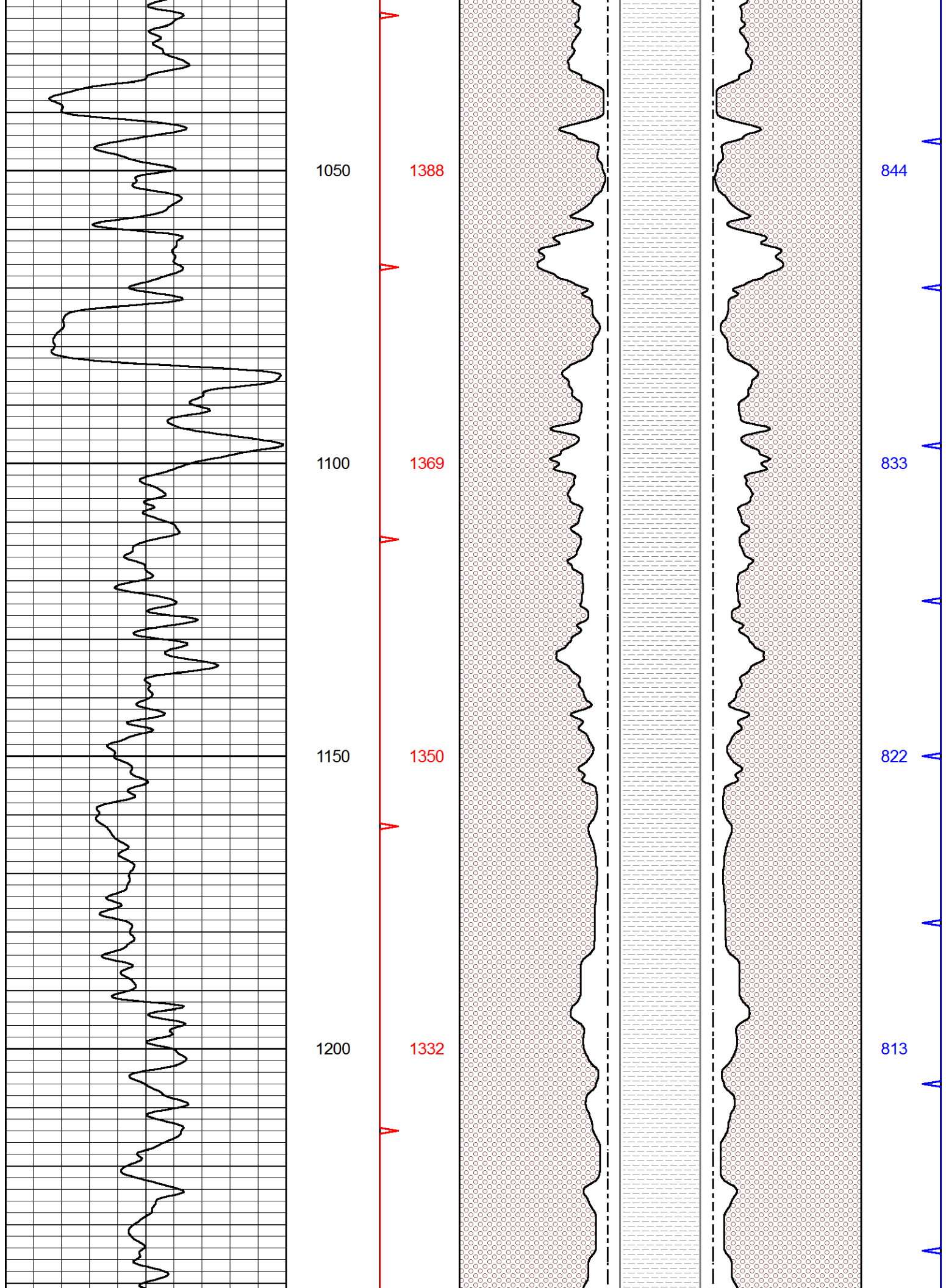
888

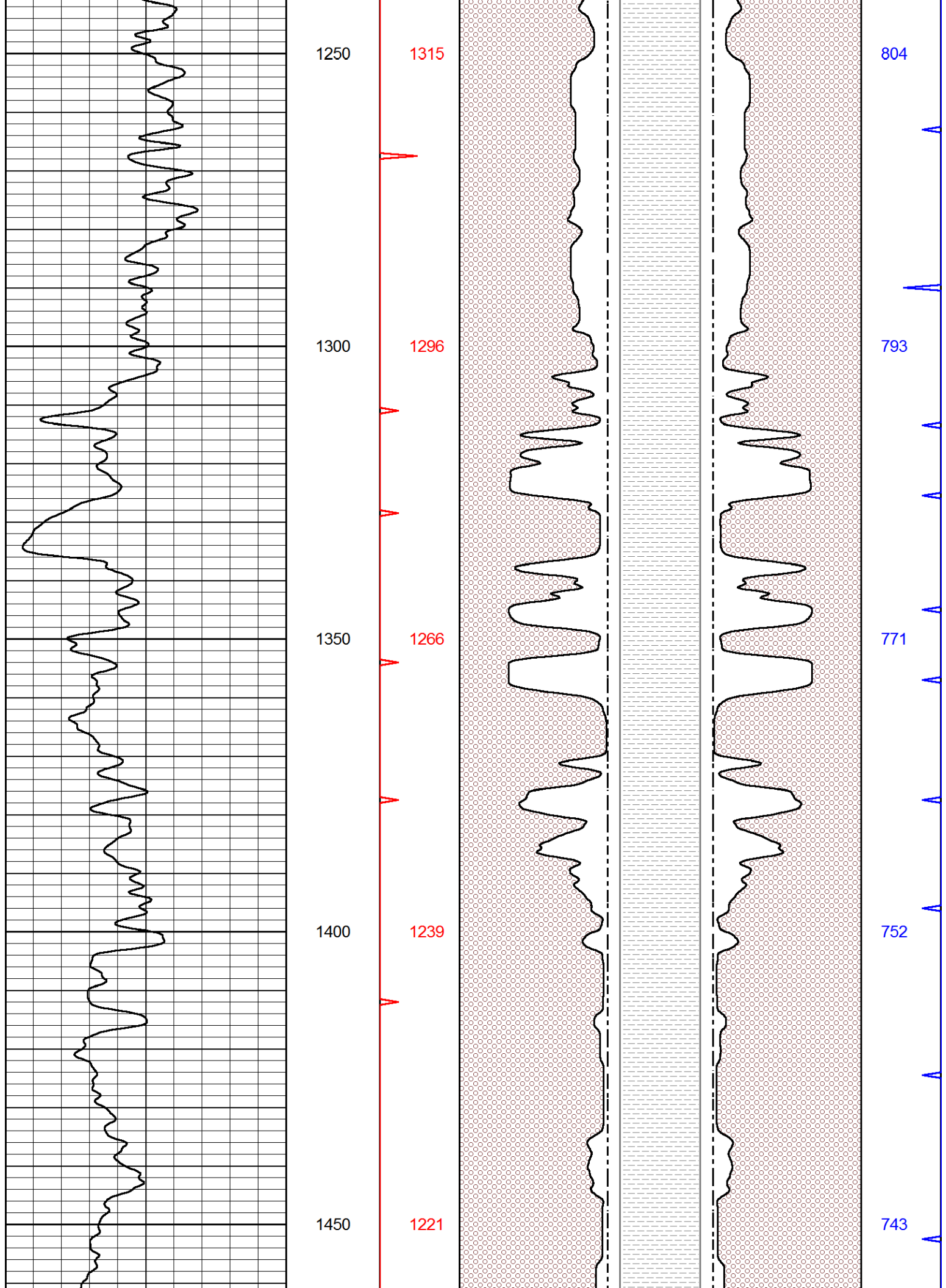
879

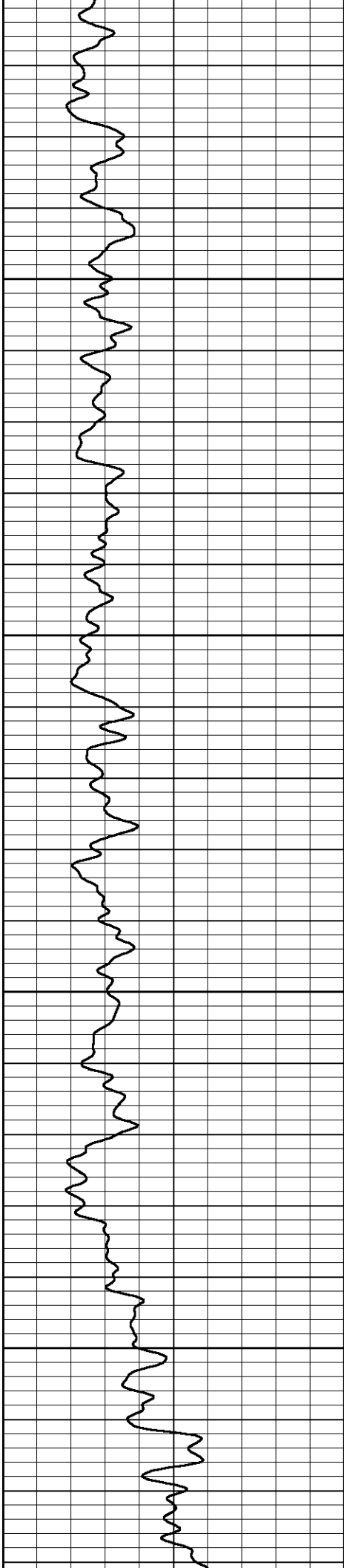
866

855









1500

1204

1550

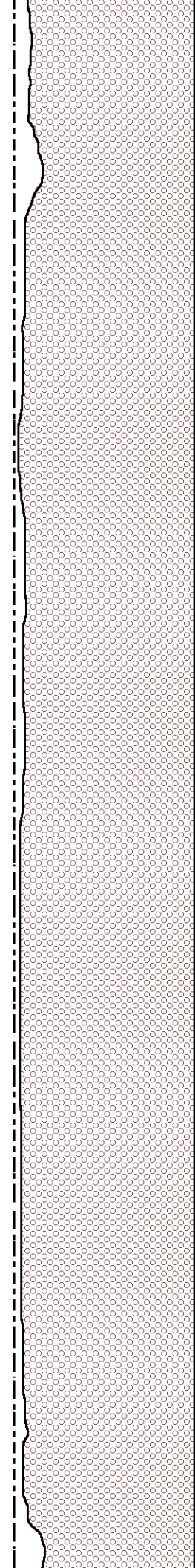
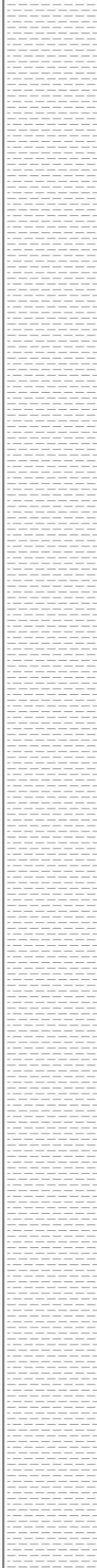
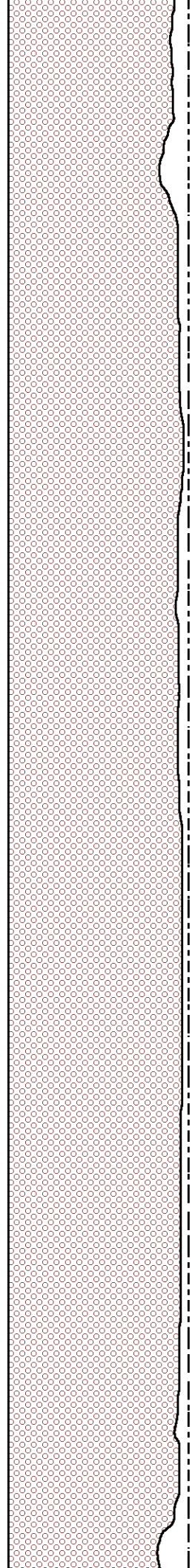
1186

1600

1169

1650

1152

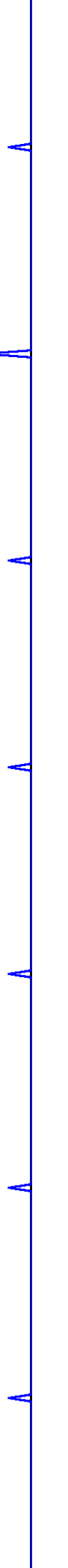


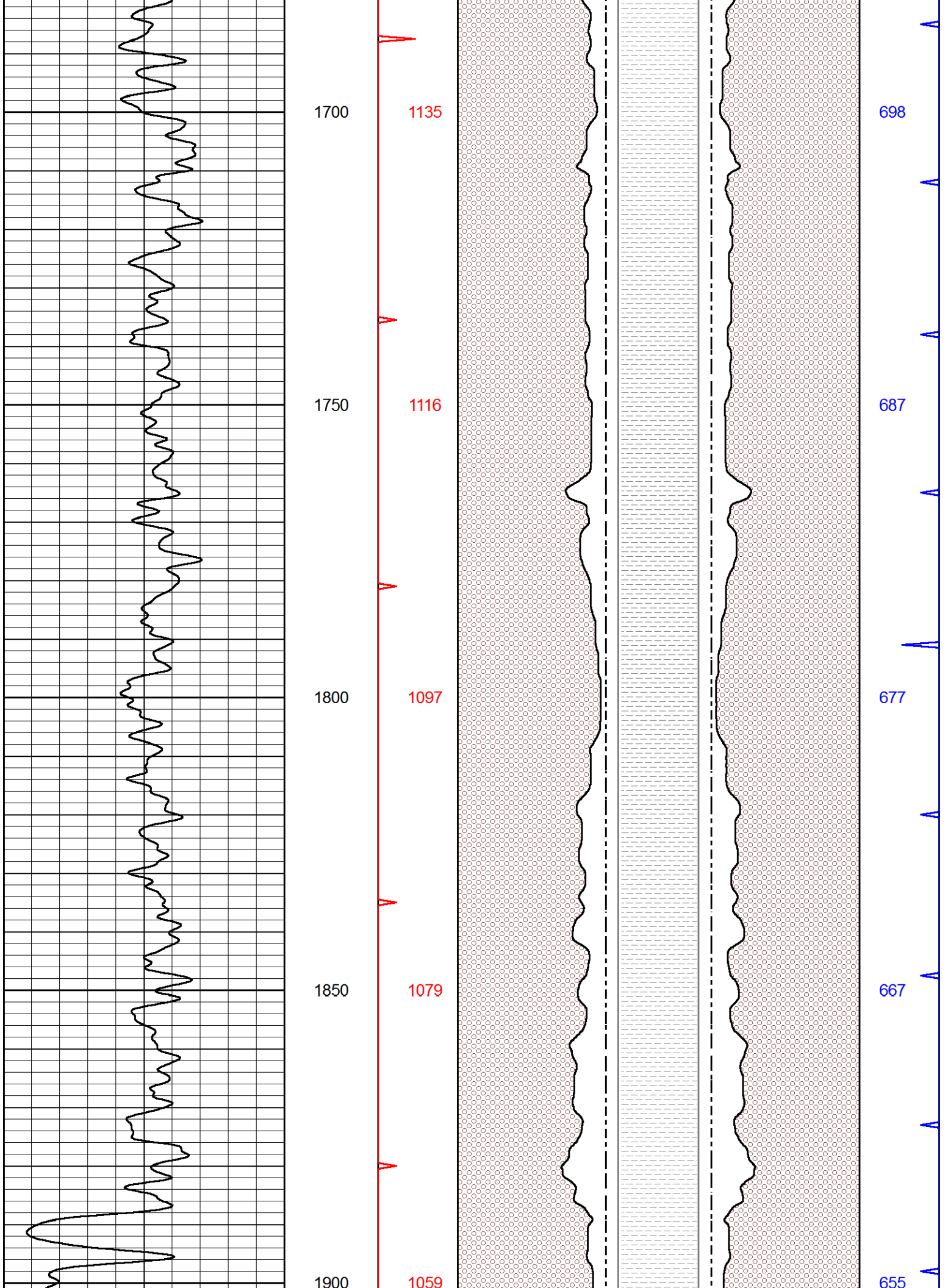
734

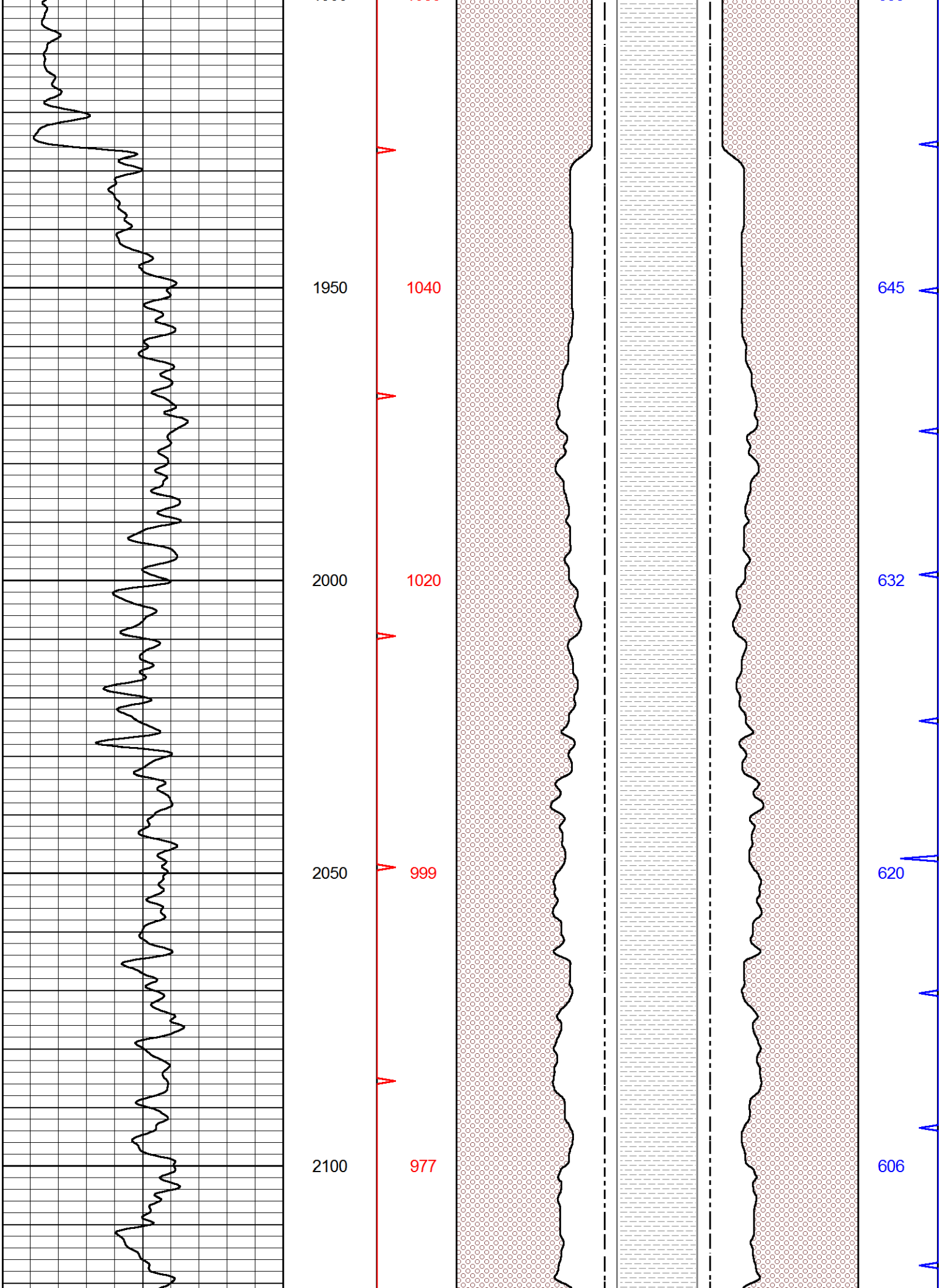
725

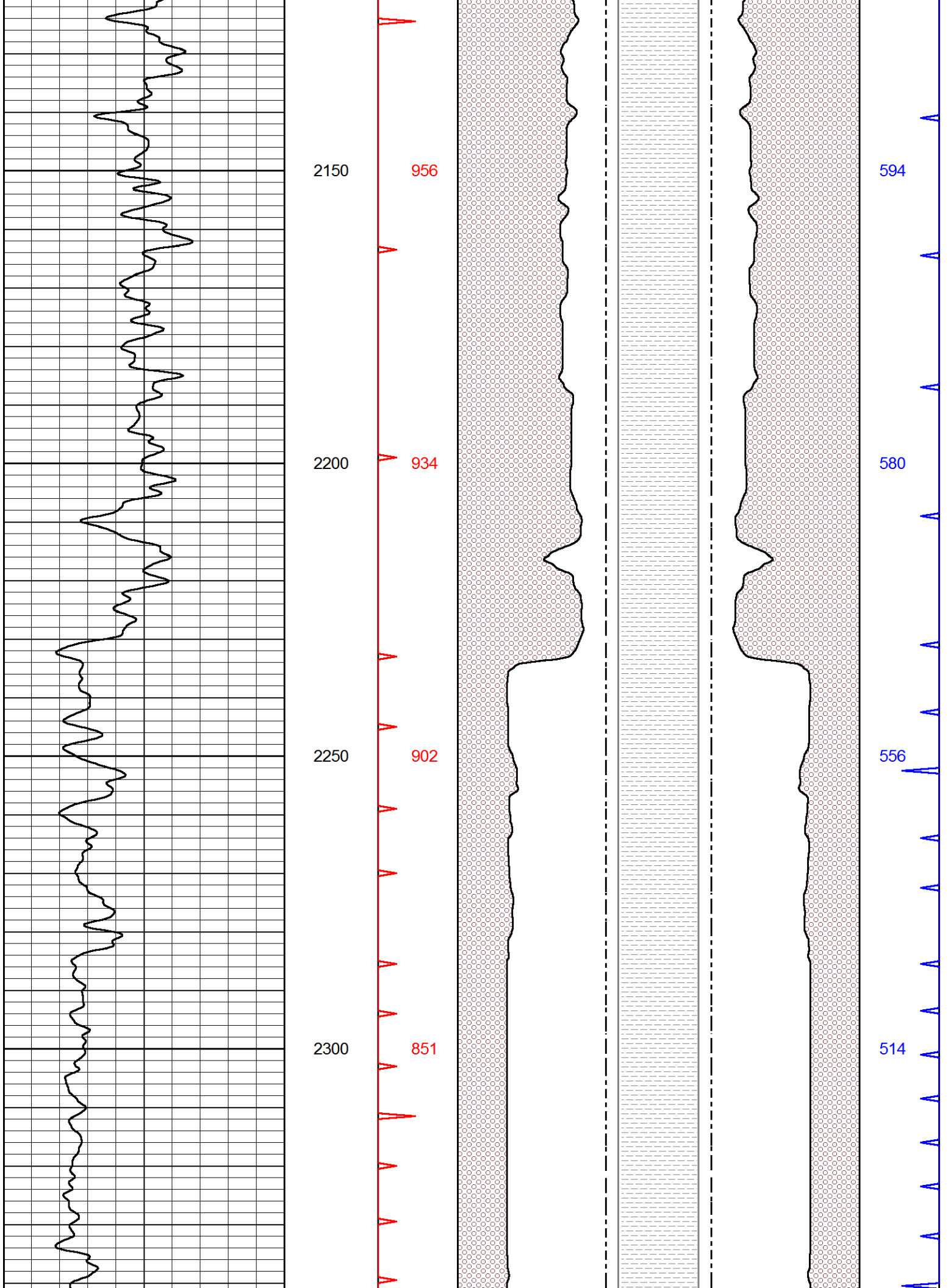
716

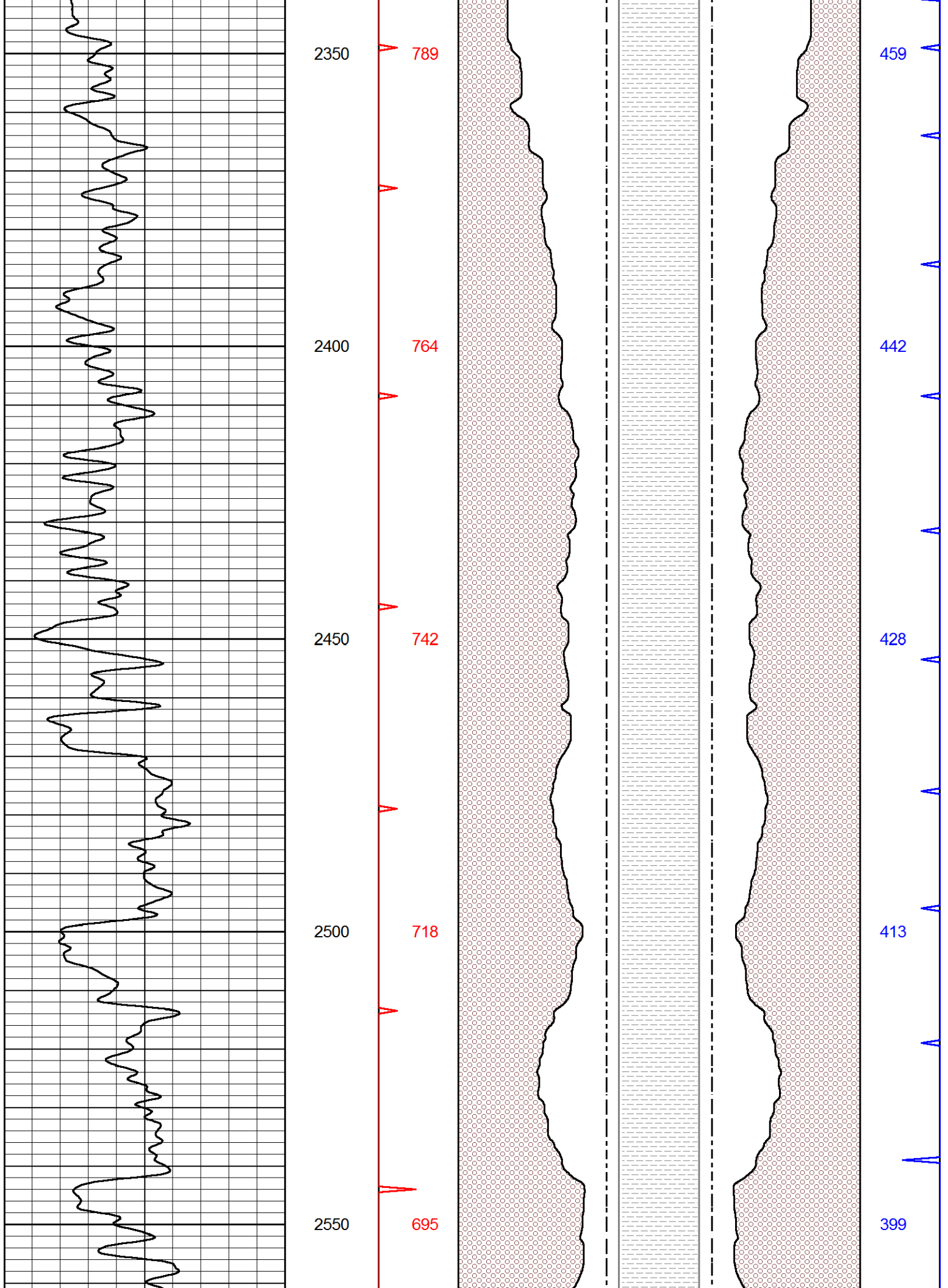
707

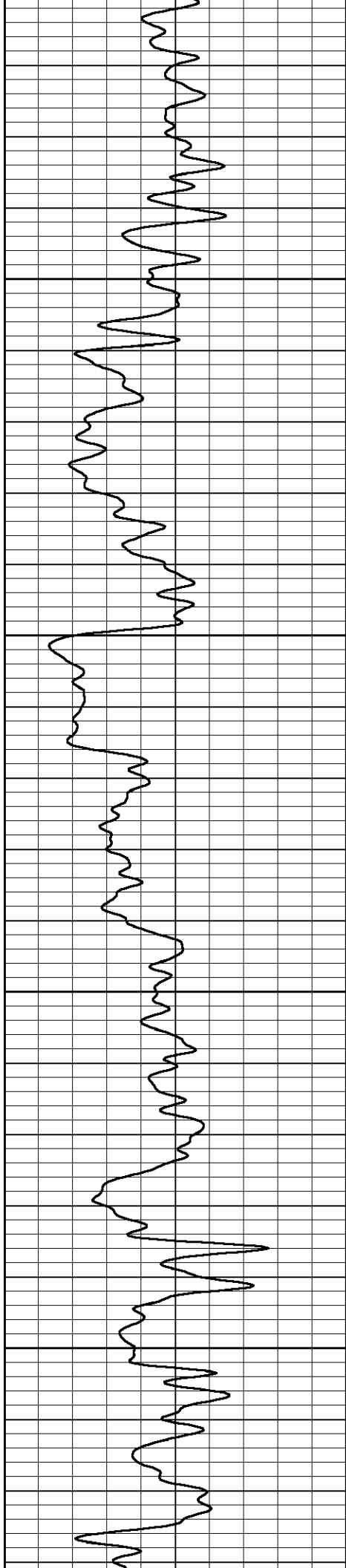












2600

670

2650

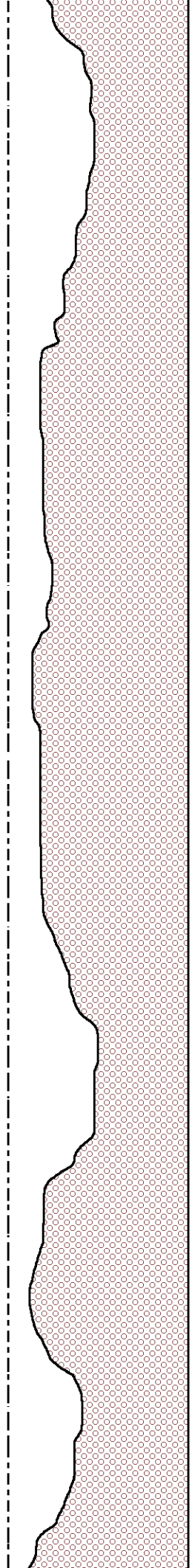
648

2700

627

2750

605



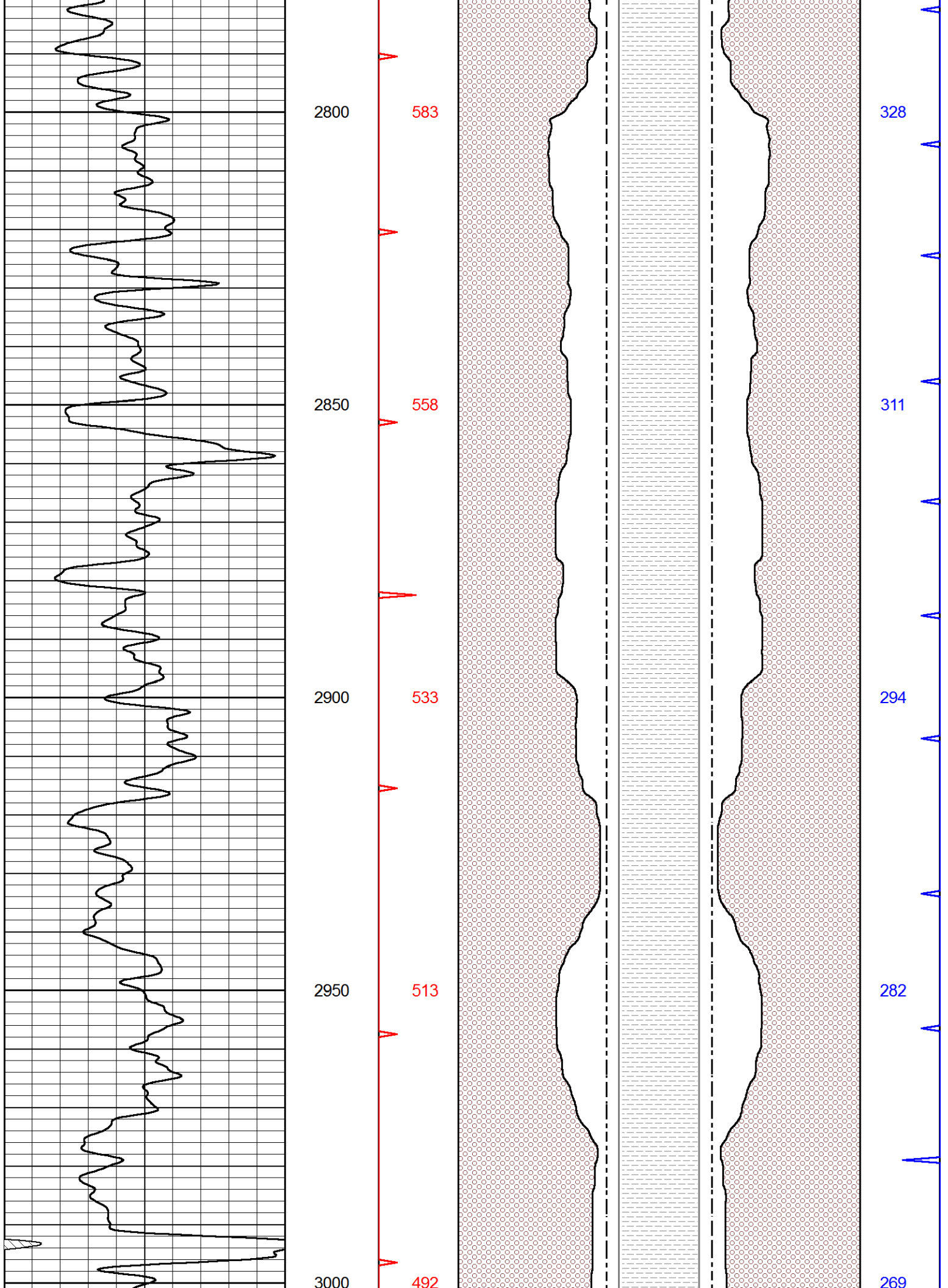
382

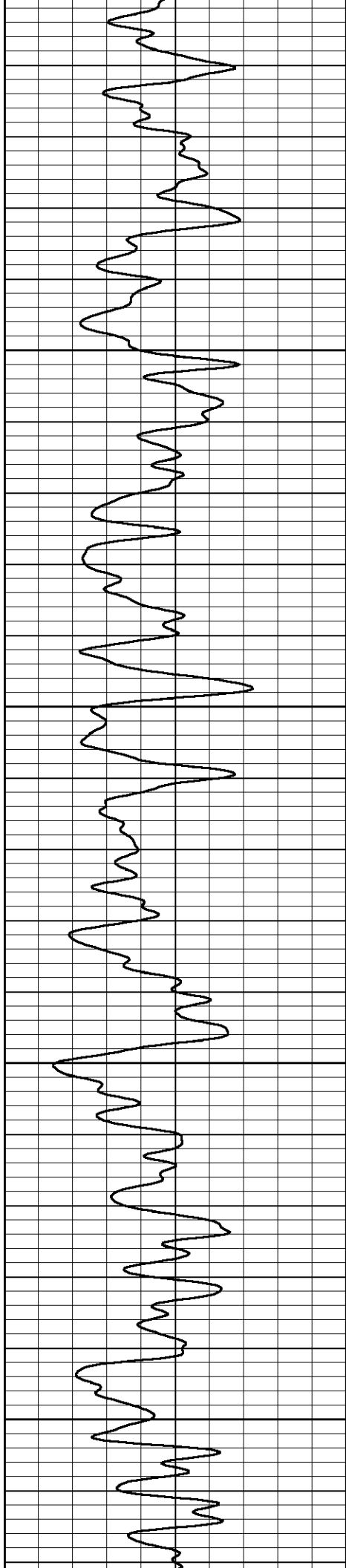
368

355

341







3050

3100

3150

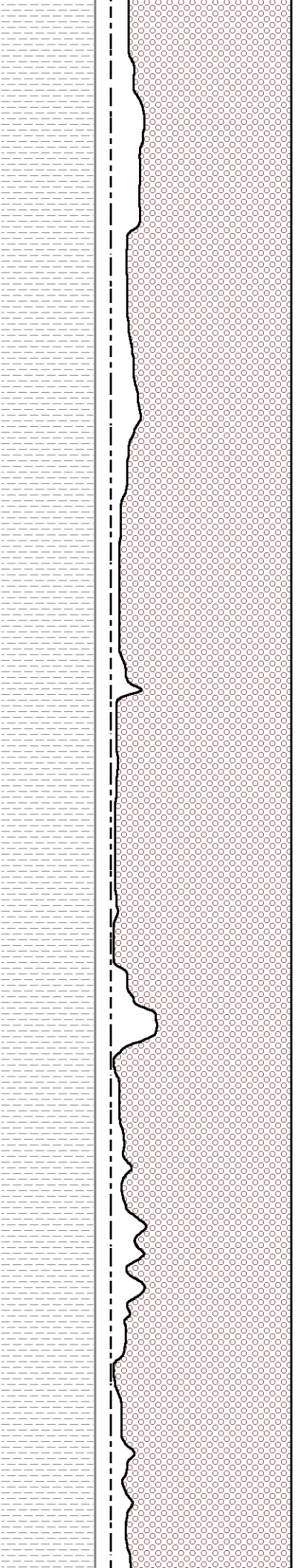
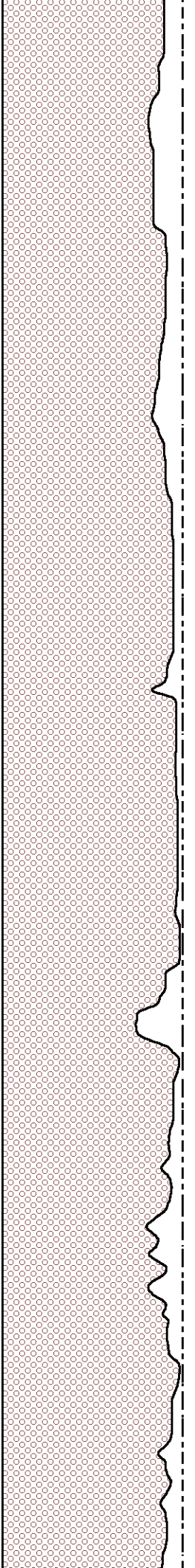
3200

471

452

433

414



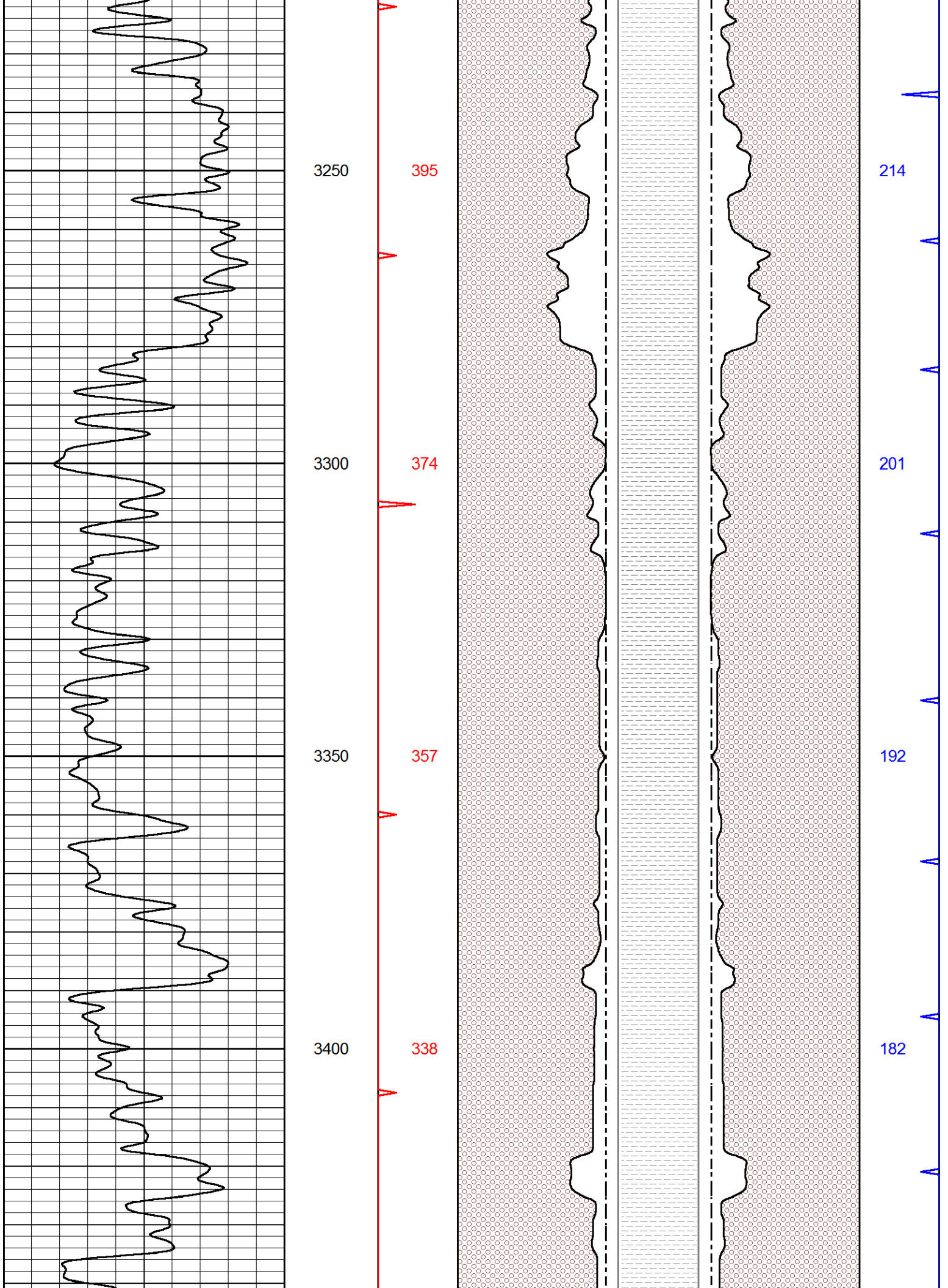
257

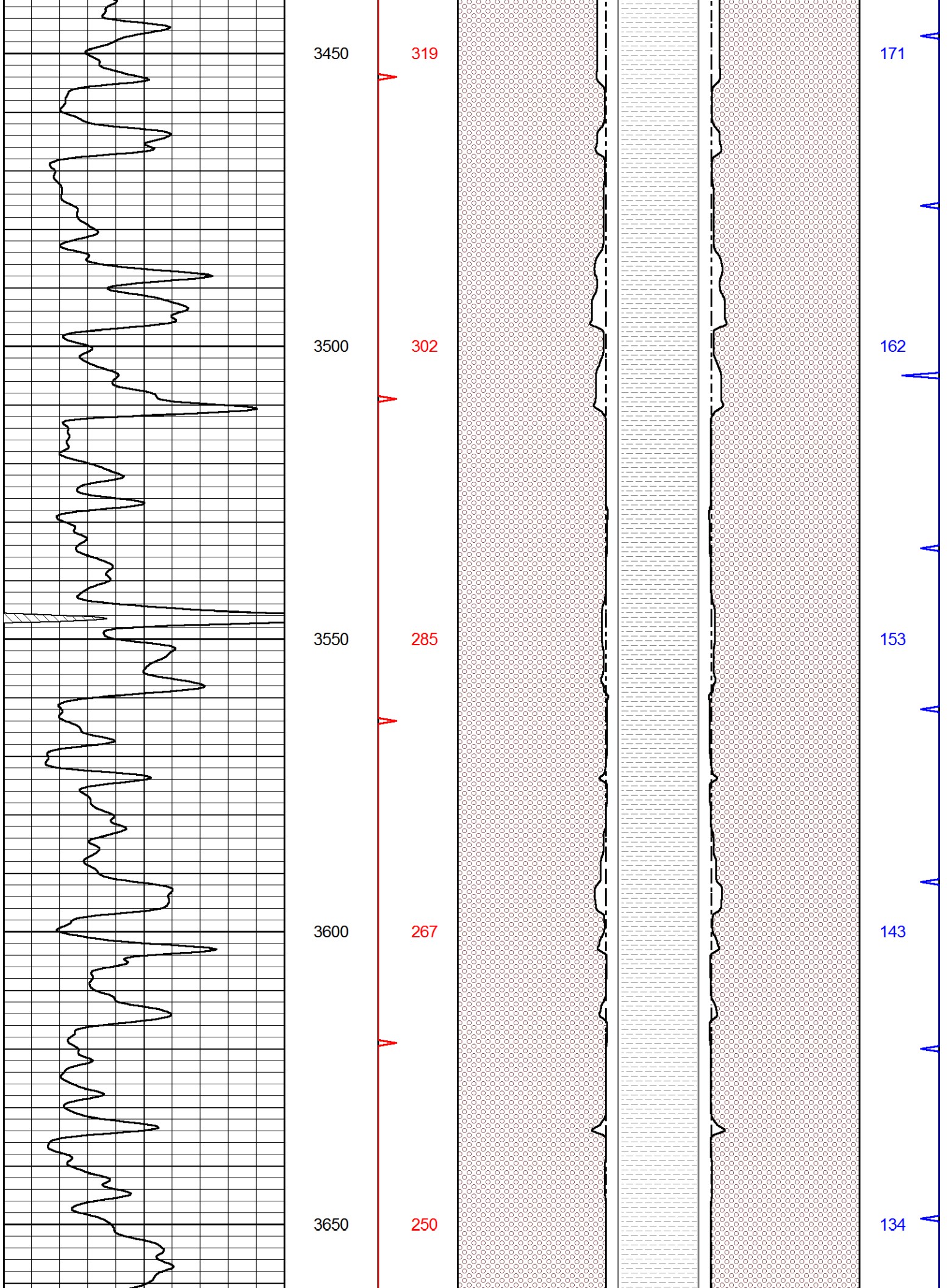
246

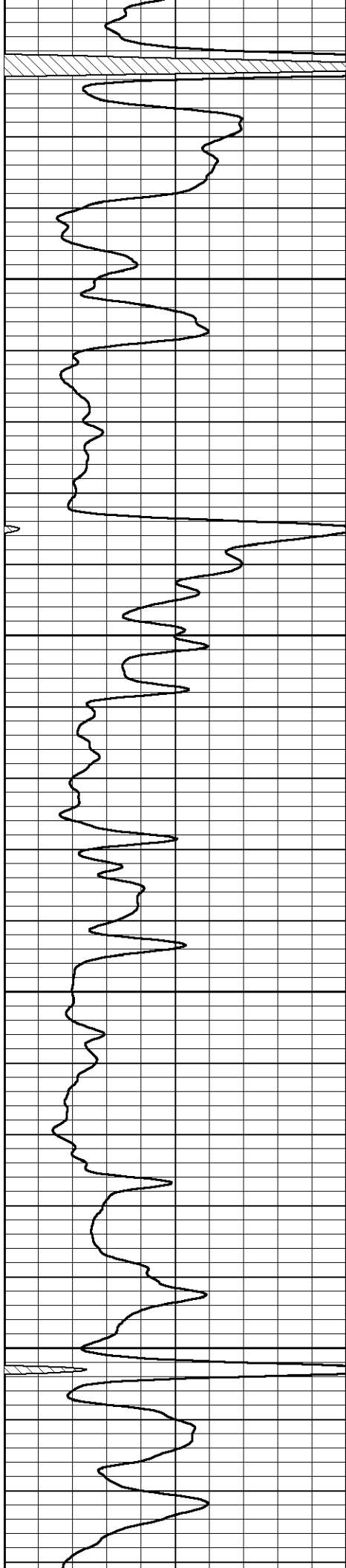
235

225









3700

232

3750

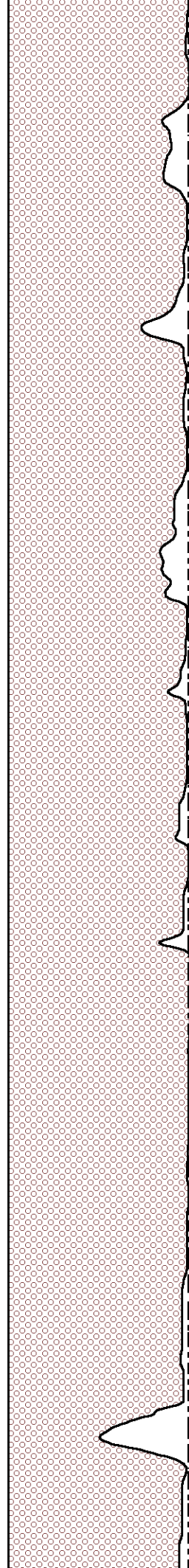
214

3800

197

3850

180

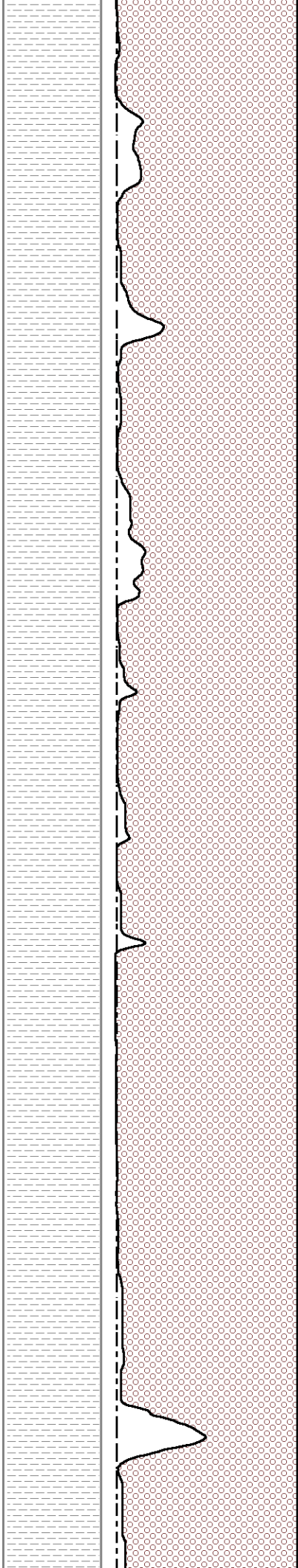


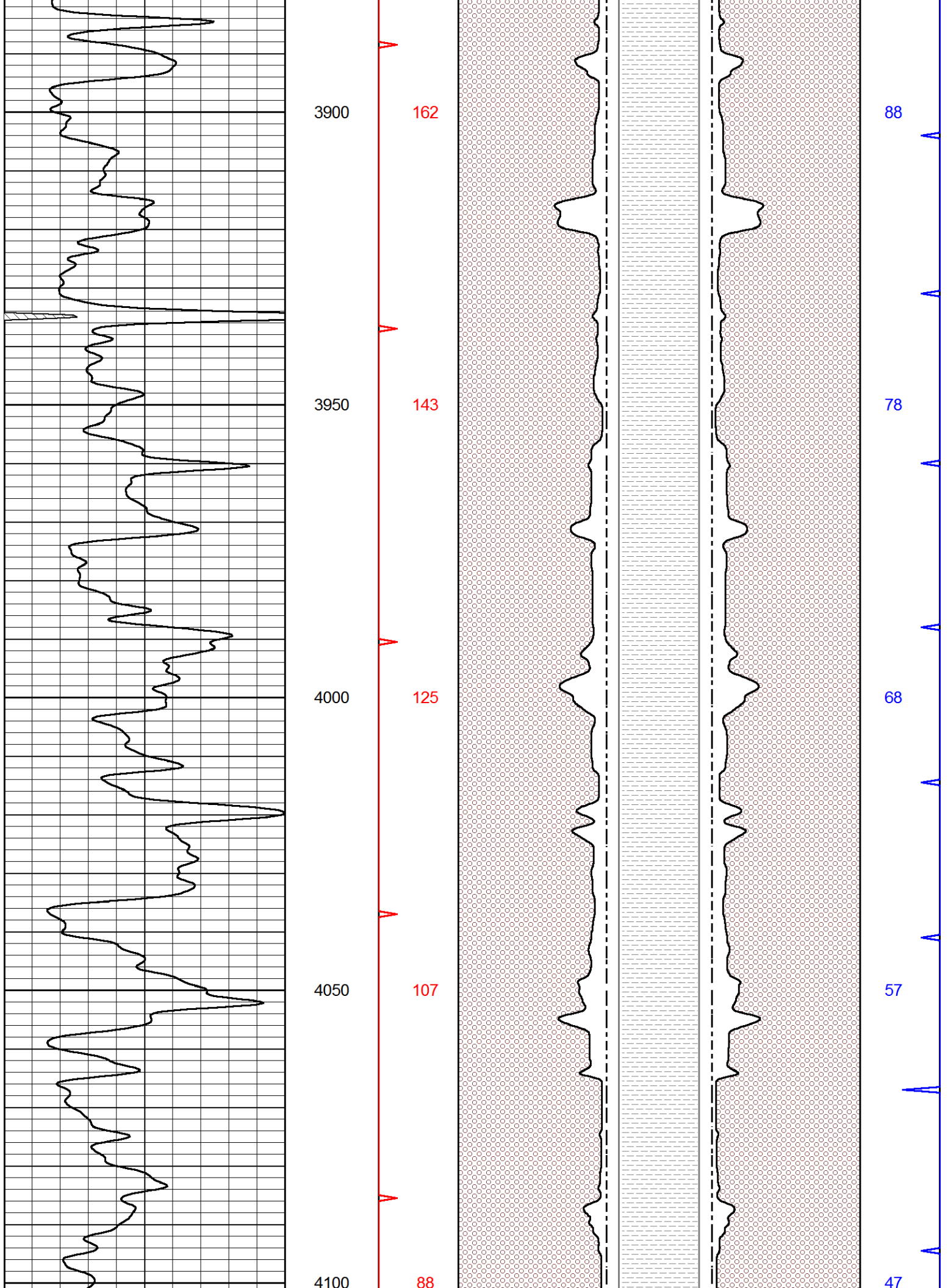
125

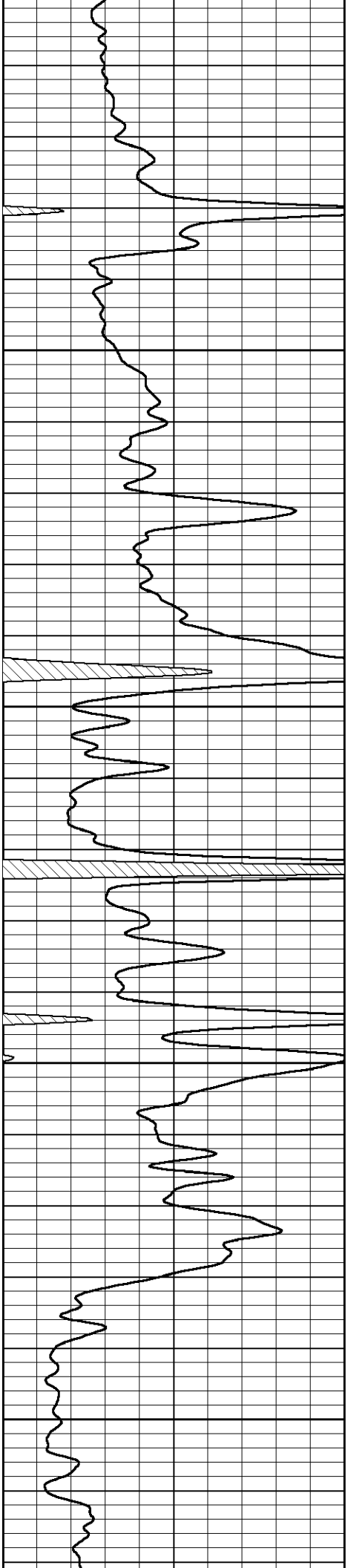
115

106

98







4150

70

4200

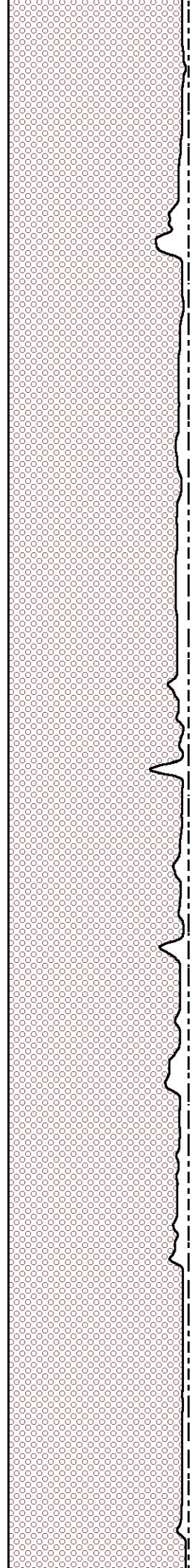
52

4250

34

4300

16

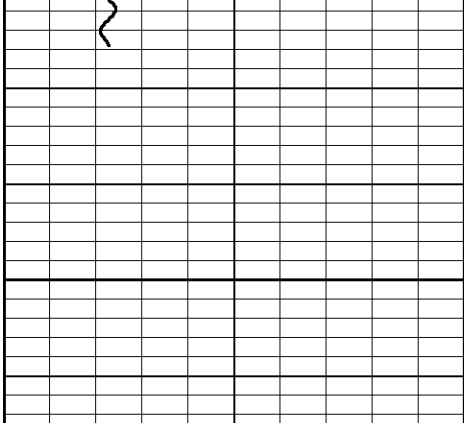


37

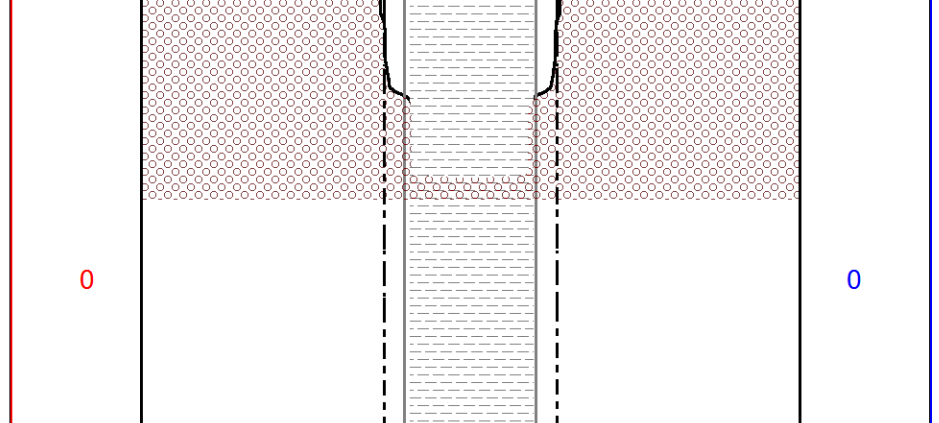
28

18

8



4350



0      GAMMA RAY (GAPI)      150

16      CALIPER (in)      6 6      CALIPER (in)      16

16      BIT SIZE      6 6      BIT SIZE      16

0      AVTX (ft3)      15 15      BVTX (ft3)      0