



DUAL INDUCTION LOG

Company BRITO OIL COMPANY, INC.
Well POLIFKA #1-10
Field WILDCAT
County GOVE
State KANSAS

Location: API #: 15-063-22315-00-00
 2310' FSL & 2285' FEL
 SEC 31 TWP 12S RGE 26W
Permanent Datum GROUND LEVEL Elevation 2627'
Log Measured From KELLY BUSHING
Drilling Measured From KELLY BUSHING
Other Services CNL/CDL MEL
Elevation K.B. 2637', D.F. N/A, G.L. 2627'

Date	10/24/2017
Run Number	ONE
Depth Driller	4550'
Depth Logger	4550'
Bottom Logged Interval	4549'
Top Log Interval	200'
Casing Driller	8.625" @ 225'
Casing Logger	219'
Bit Size	7.875"
Type Fluid in Hole	CHEMICAL
Salinity, ppm CL	4100
Density / Viscosity	9.3 59
pH / Fluid Loss	10.5 8.0
Source of Sample	FLOWLINE
Rm @ Meas. Temp	0.60 @ 50
Rmt @ Meas. Temp	0.45 @ 50
Rmc @ Meas. Temp	0.81 @ 50
Source of Rmf / Rmc	CHARTS
Rm @ BHT	0.25 @ 122
Operating Rig Time	3 HOURS
Max Rec. Temp. F	122
Equipment Number	91
Location	HAYS
Recorded By	D. SCHMIDT
Witnessed By	ROBERT HENDRIX

<<< Fold Here >>>

All interpretations are opinions based on inferences from electrical or other measurements and Pioneer Wireline Services, LLC cannot and does not guarantee the accuracy or correctness of any interpretation, and Pioneer Wireline Services, LLC will not be liable or responsible for any loss, costs, damages, or expenses incurred or sustained by anyone resulting from any interpretation made by any of our officers, agents or employees.

Comments

N/A DENOTES NOT AVAILABLE OR NON-APPLICABLE.

QUINTER,
6 SOUTH, 1/2 WEST,
SOUTH INTO

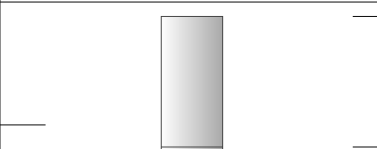
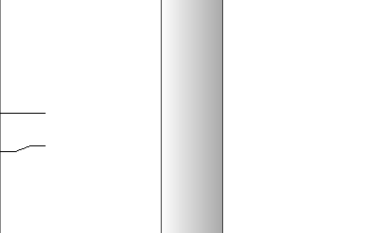
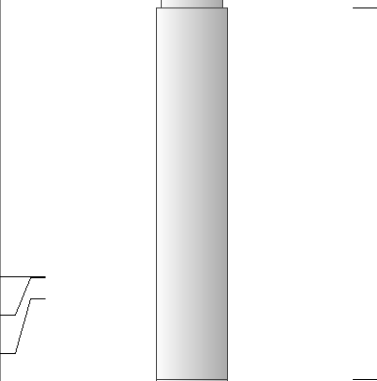
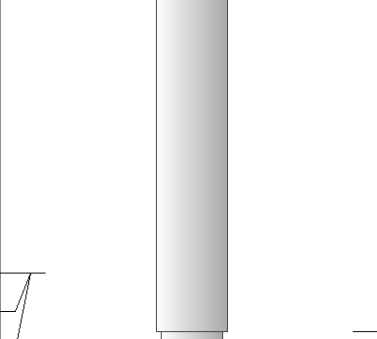
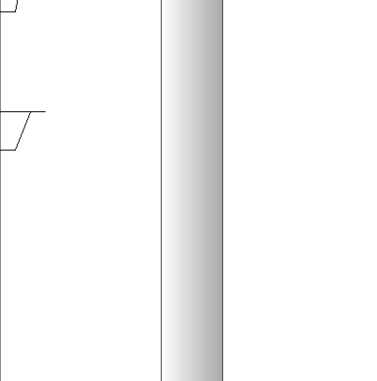
Log Measured From: KELLY BUSHING 10 Ft. Above Permanent Datum

THANK YOU FOR USING PIONEER ENERGY SERVICES
www.pioneerenergy.com 785-625-3858

Your Pioneer Energy Services Crew Engineer: D. SCHMIDT Operator: Operator: Operator:	This Log Record Was Witnessed By Primary Witness: ROBERT HENDRIX Secondary Witness: Secondary Witness: Secondary Witness:
---	--

Top - Bottom

M	A	SZCOR	NPORSEL	FLUIDDEN g/cc	MATRXDEN g/cc	SPSHIFT mV	SNDERRM mmho/m
2	1	Off	Limestone	1	2.71	165	0
SNDERR mmho/m	SRFTEMP degF	CASETHCK in	CASEOD in	PERFS	TDEPTH ft	BOTTEMP degF	BOREID in
0	50	0	5.5	0	4550	122	7.875

Sensor	Offset (ft)	Schematic	Description	Length (ft)	O.D. (in)	Weight (lb)
GR	40.58		GR-M&W (89)	3.00	3.50	50.00
CNLSC CNSSC	37.48 36.73		CNT-M&W (207-MW)	5.50	3.50	100.00
LSD DCAL SSD	28.43 28.42 27.93		CDL-M&W (90-1031)	8.50	4.00	250.00
MCAL MI MN	19.83 19.83 19.83		ML-PSIML (PSI-01) GO Micro log tools converted to Simplec electronics	7.58	4.00	65.00
RLL3F RLL3	15.80 15.80					

CILD 8.00

CILM 4.70

SP 0.20

DIL-M&W (PSI 91)

18.50

3.50

220.00

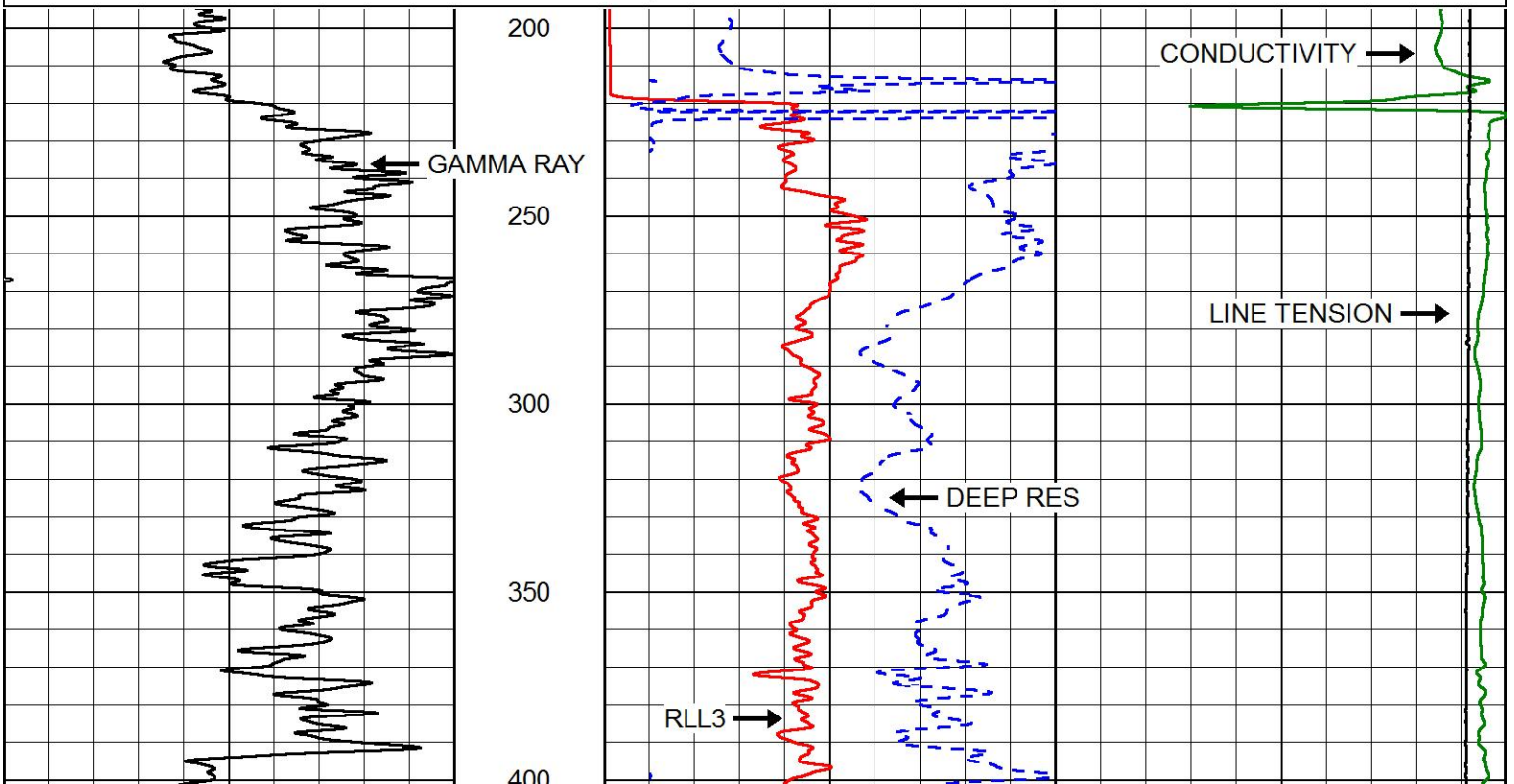
Dataset: brito_polifka 1-10.db: field/well/STKML/pass3.1
 Total length: 43.08 ft
 Total weight: 685.00 lb
 O.D.: 4.00 in

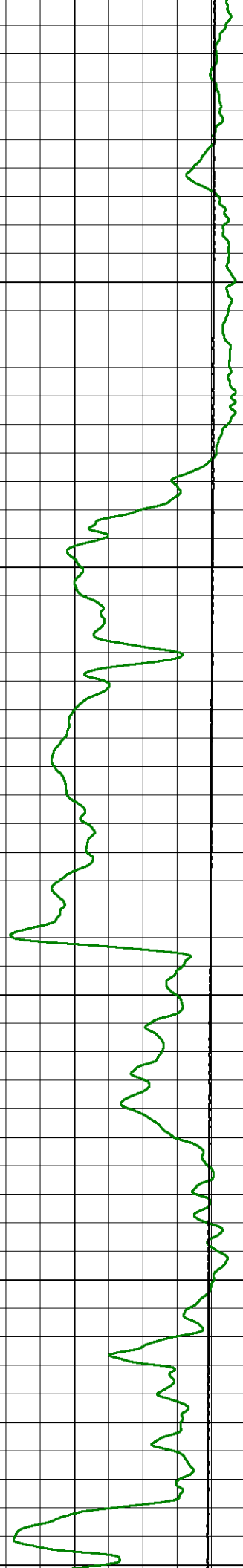
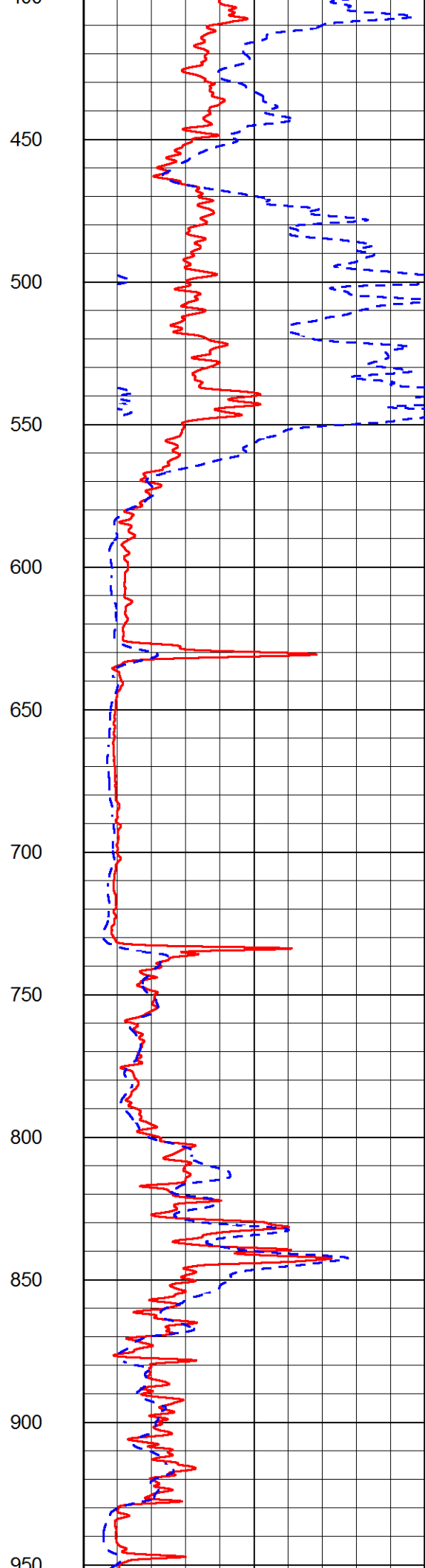
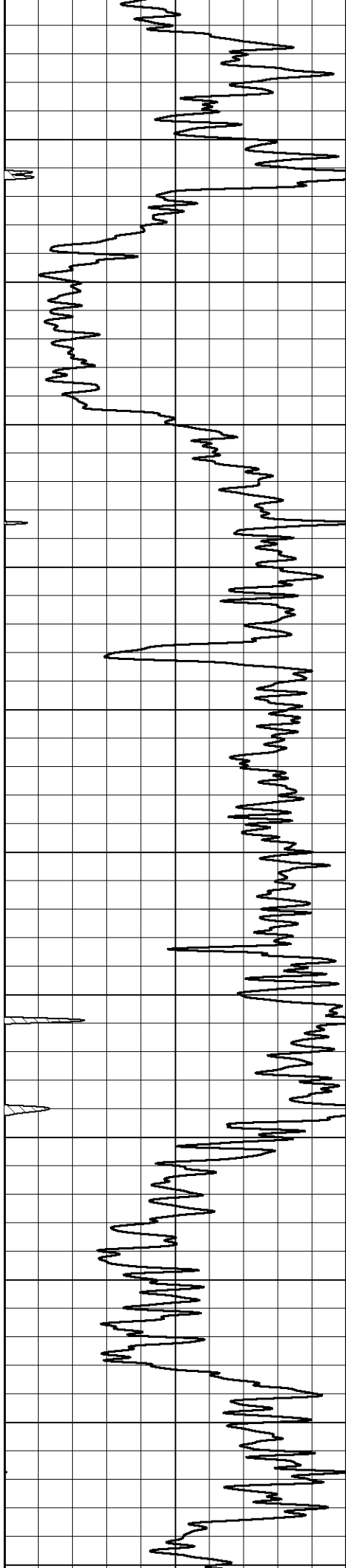


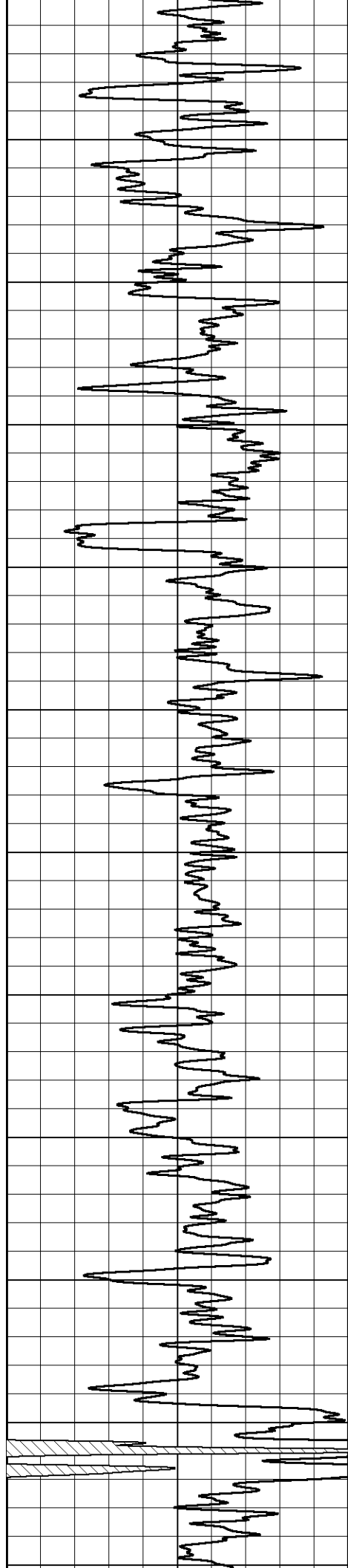
MAIN PASS

Database File: brito_polifka 1-10.db
 Dataset Pathname: STKML/pass4.1
 Presentation Format: dil2in
 Dataset Creation: Wed Oct 25 01:40:39 2017
 Charted by: Depth in Feet scaled 1:600

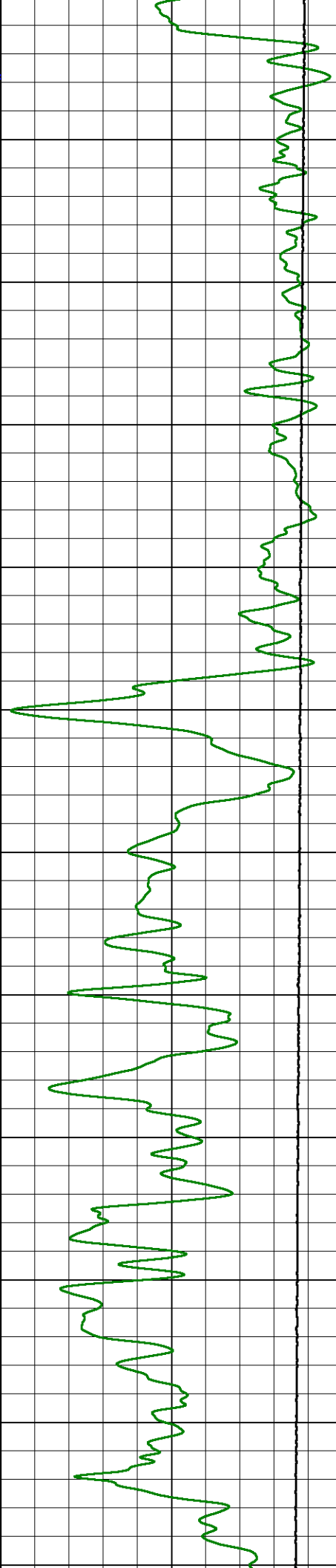
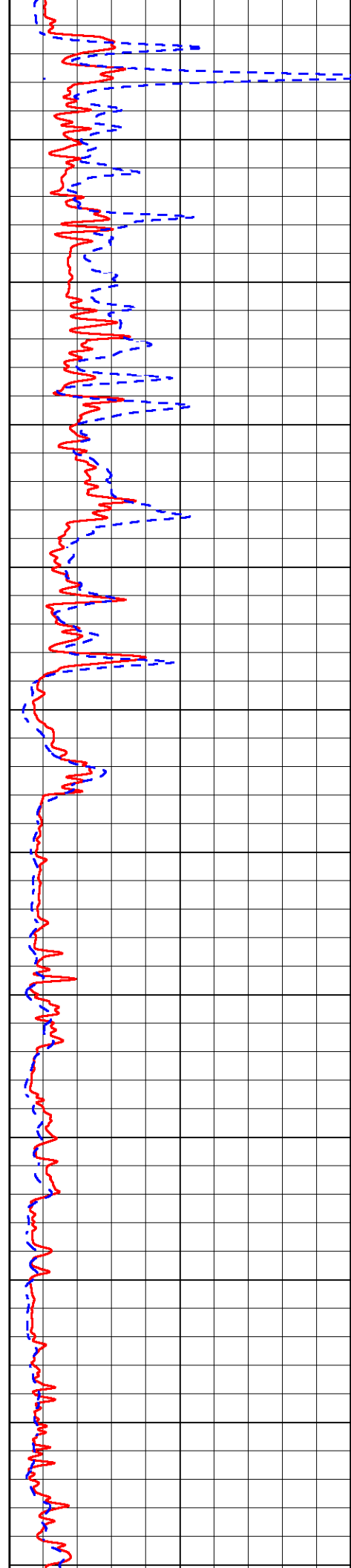
0	Gamma Ray (GAPI)	150	1000	Conductivity (mmho/m)	0
			15000	Line Tension (lb)	0
			0	RLL3 (Ohm-m)	50
			0	Deep Resistivity (Ohm-m)	50
			50	RLL3 (Ohm-m)	500
			50	Deep Resistivity (Ohm-m)	500

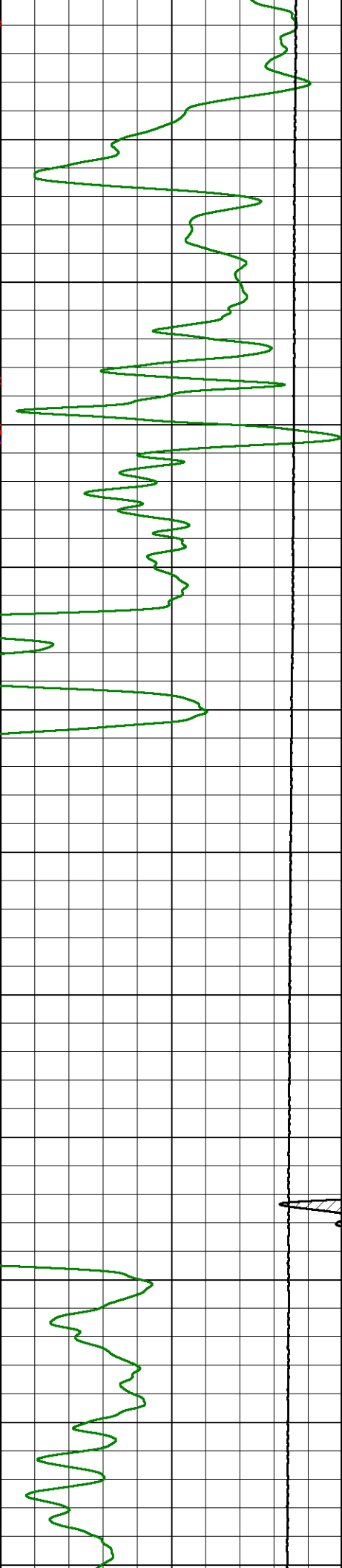
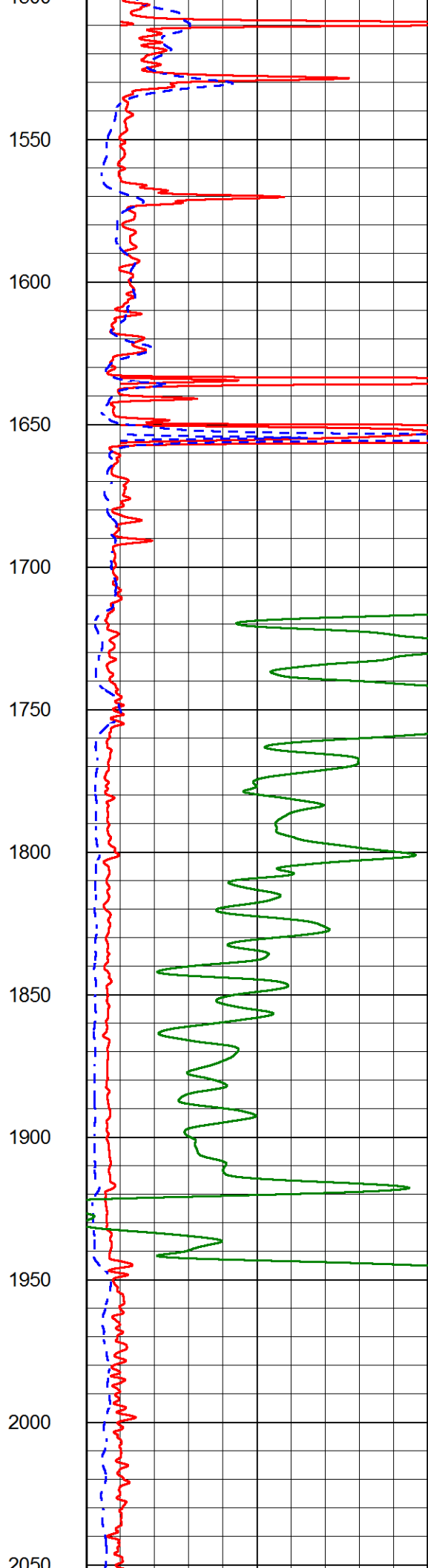
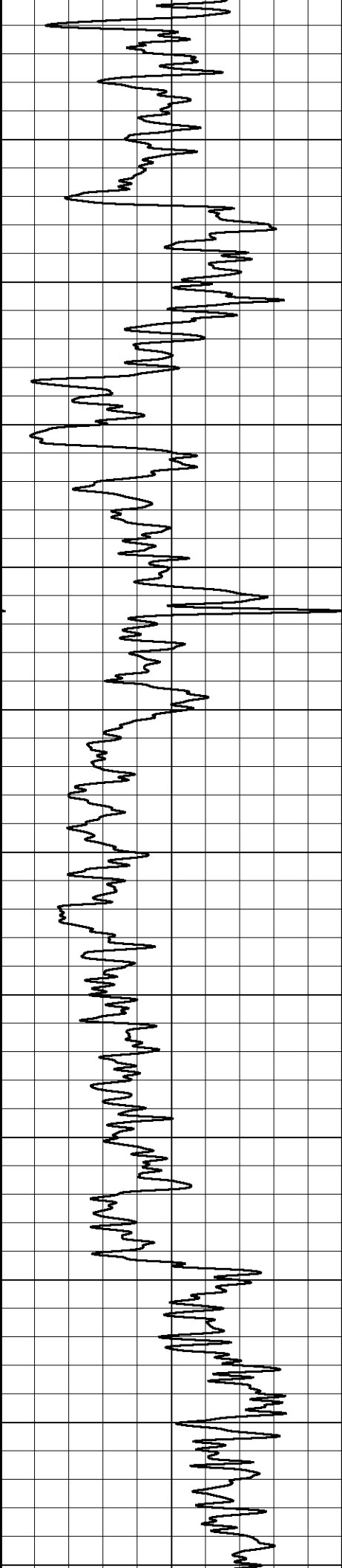


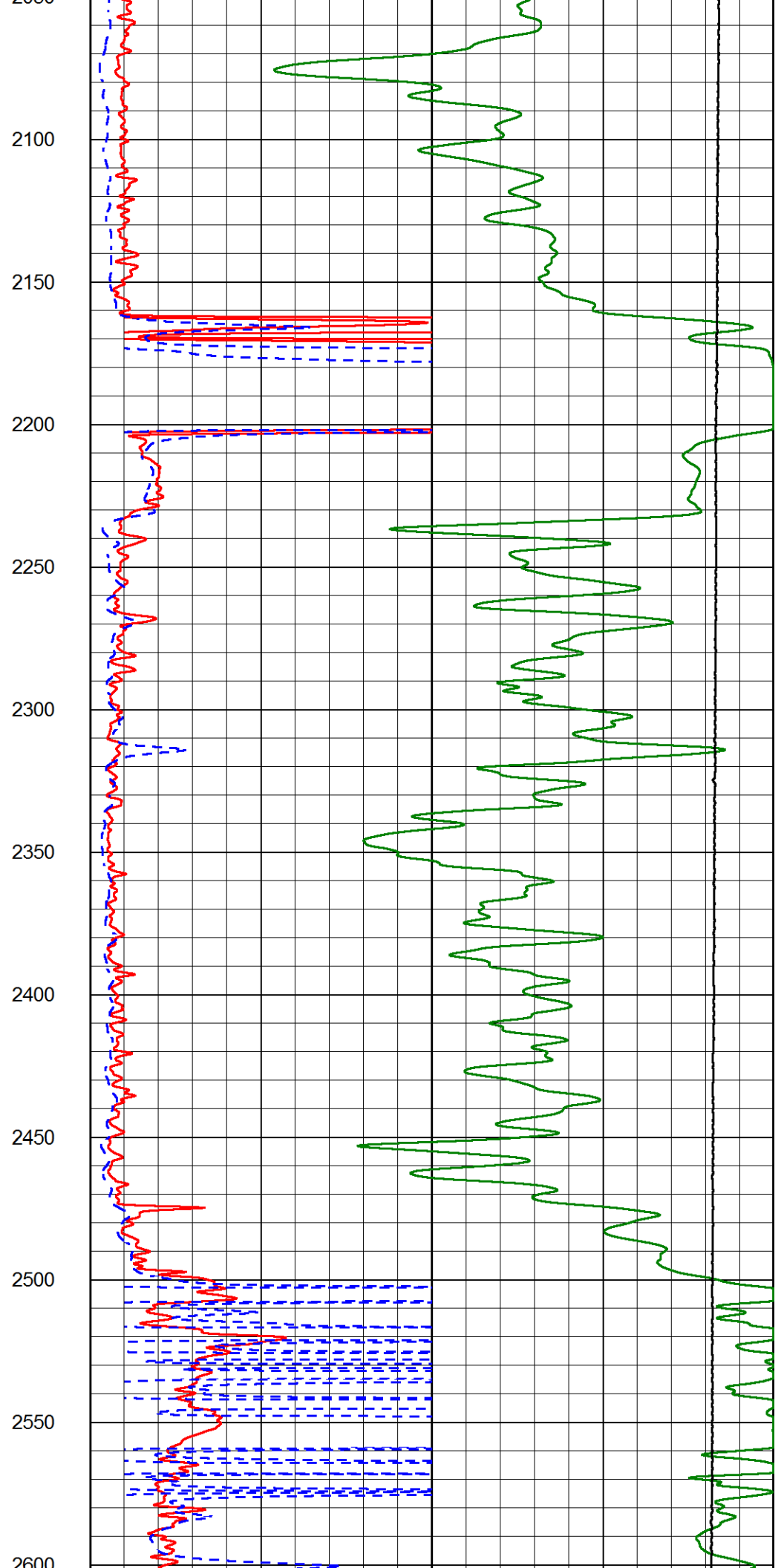
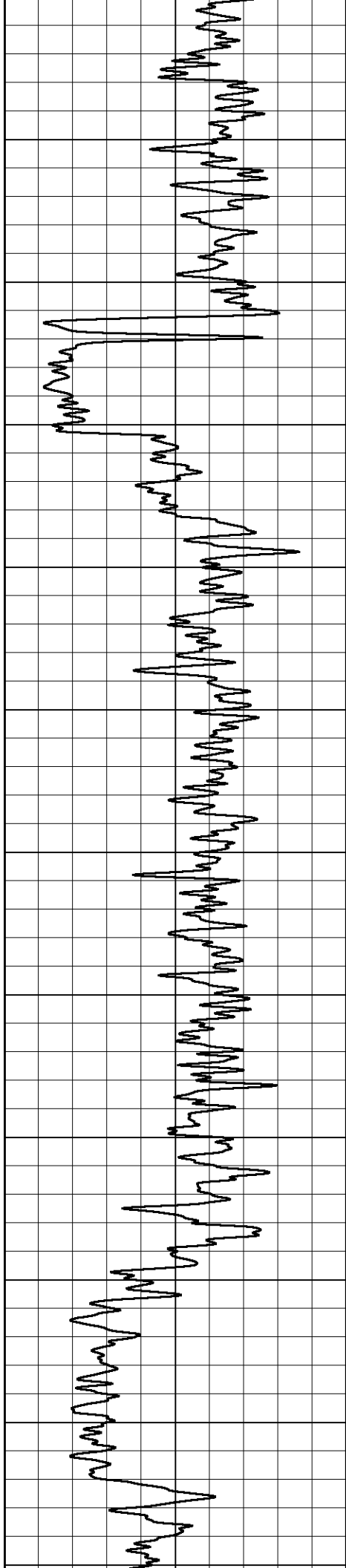


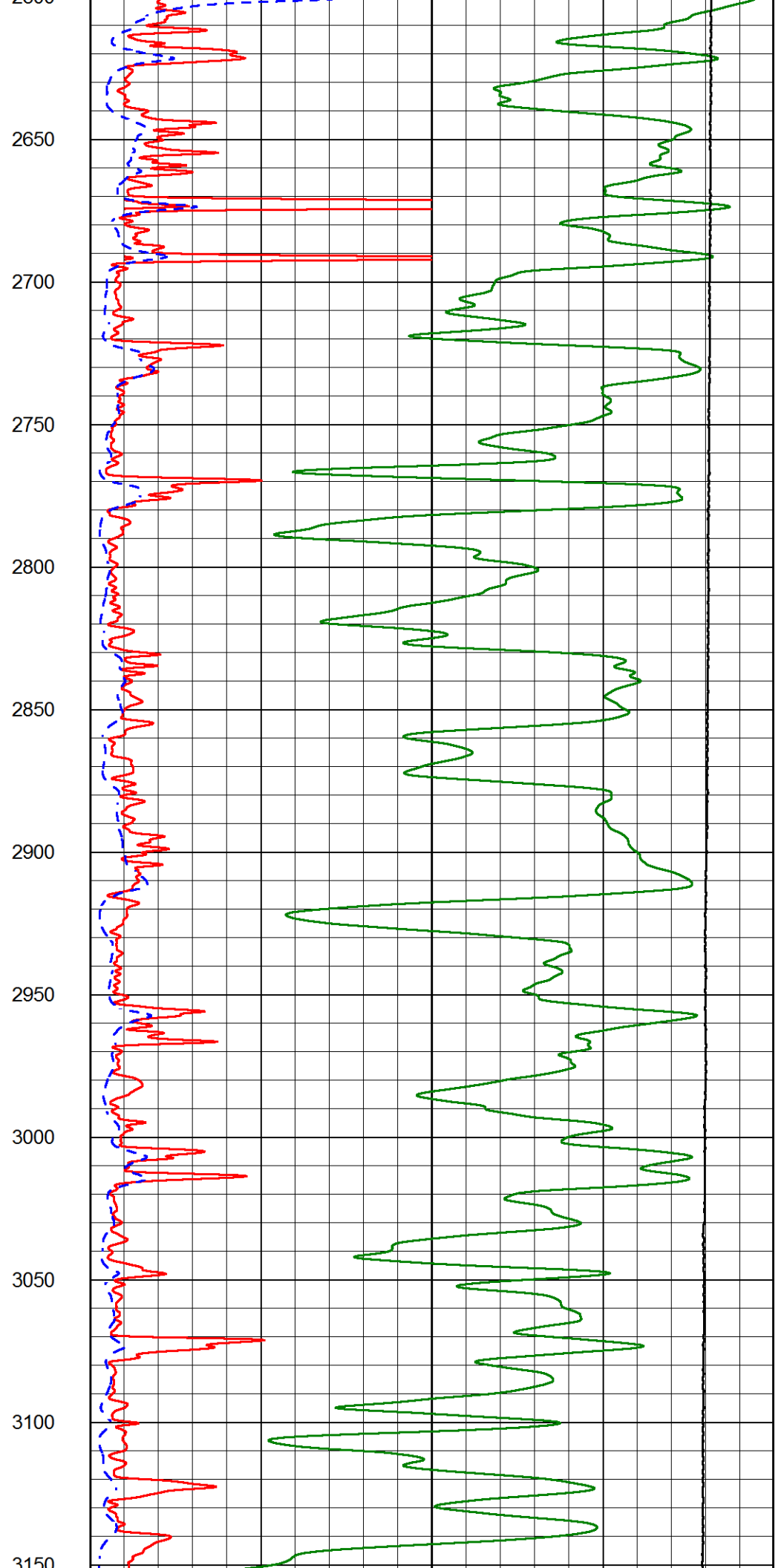
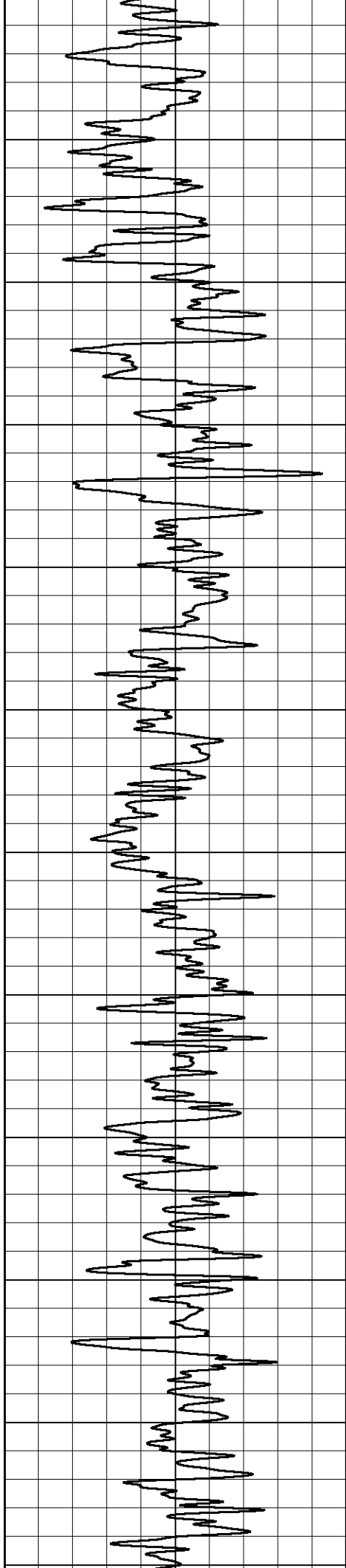


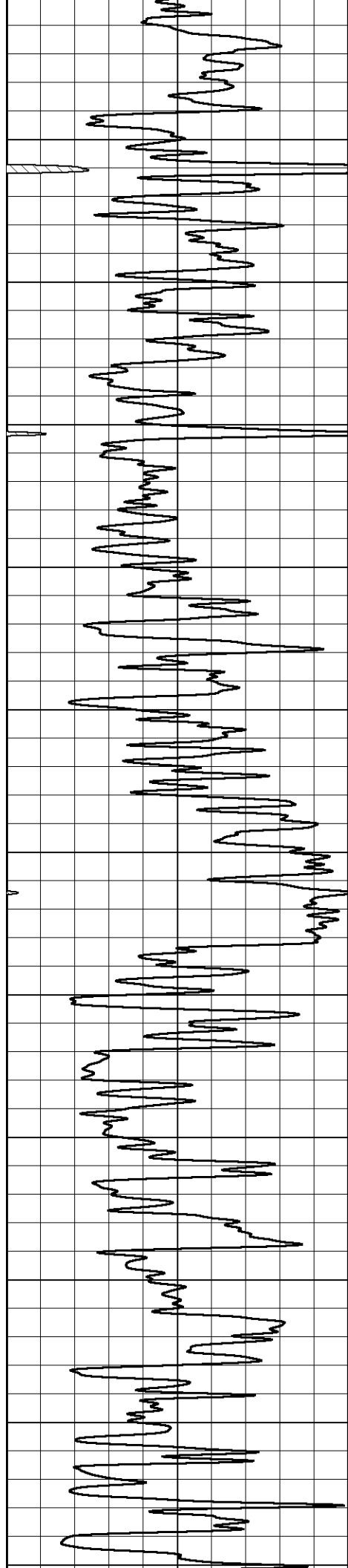
950
1000
1050
1100
1150
1200
1250
1300
1350
1400
1450
1500



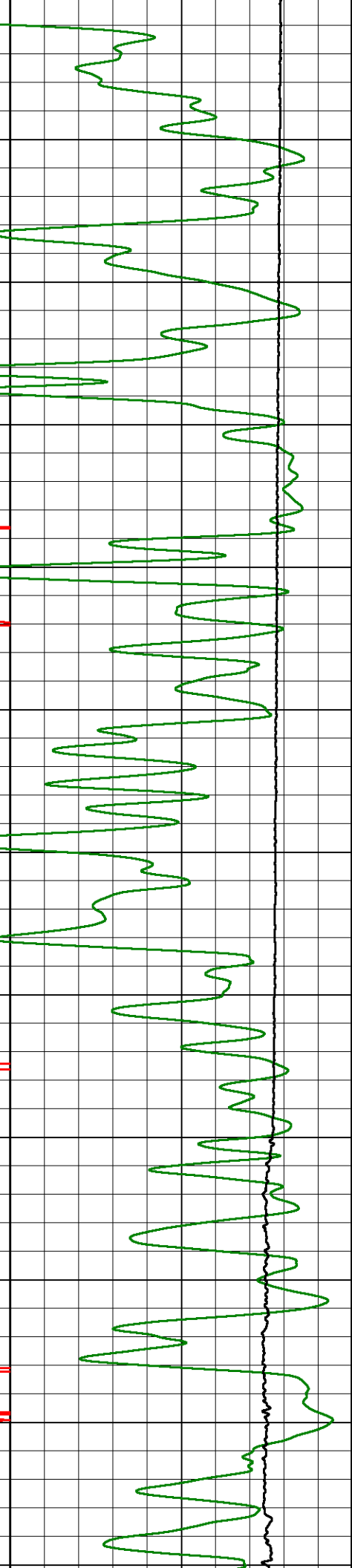
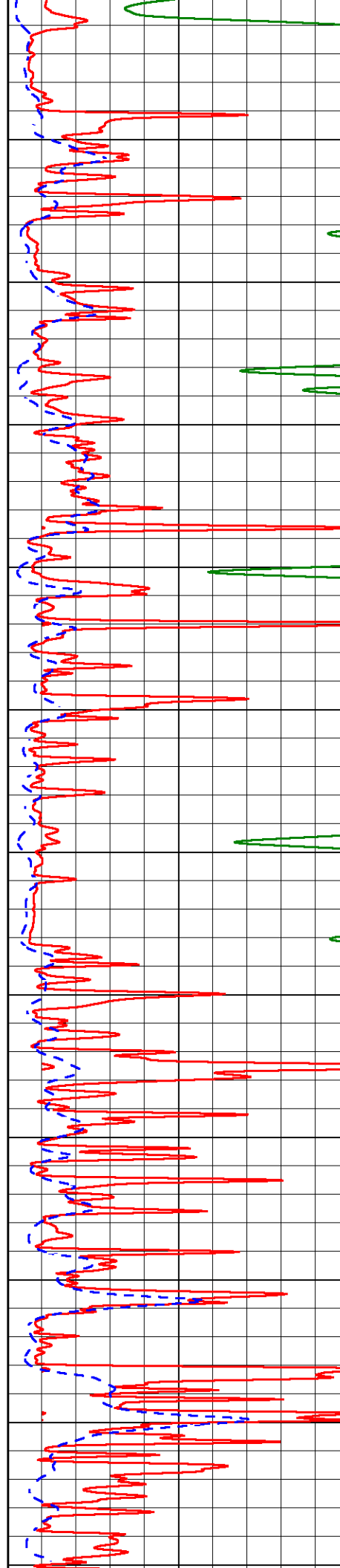


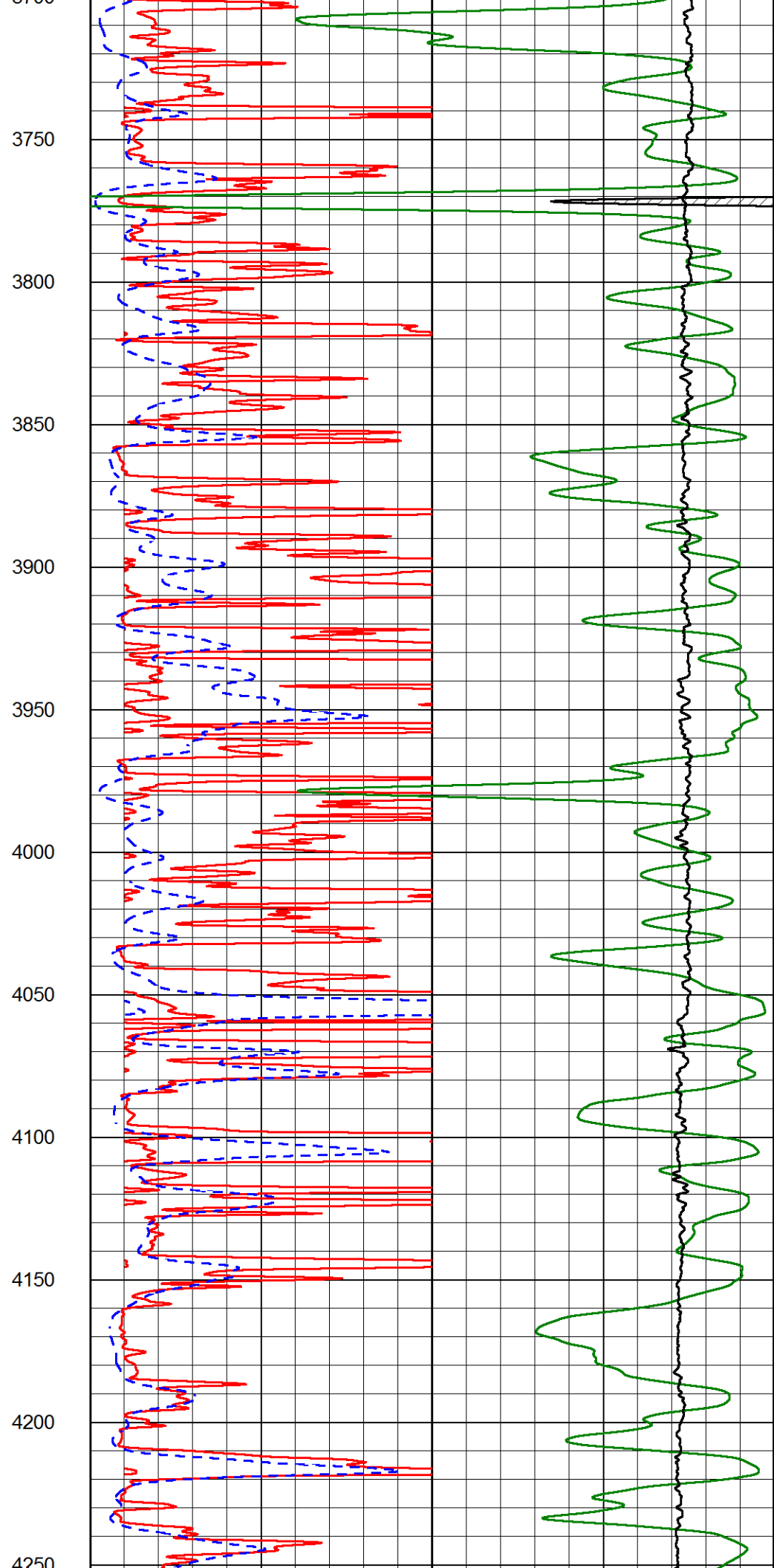
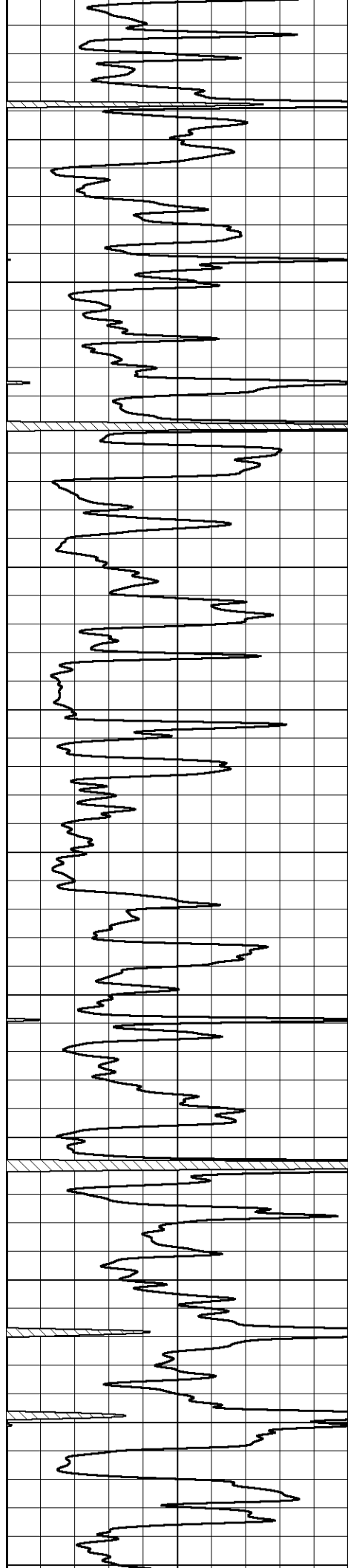


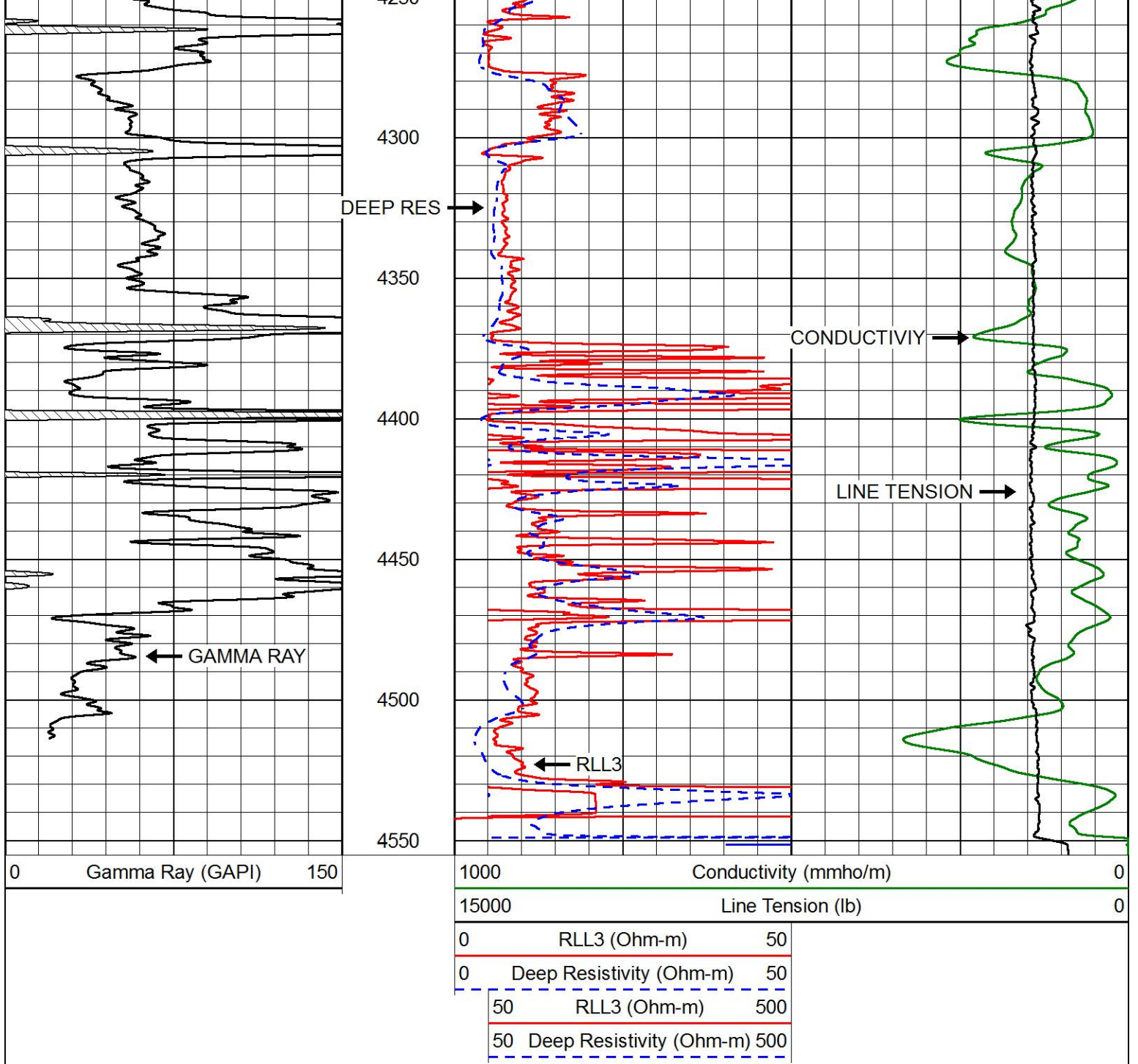




3100
3200
3250
3300
3350
3400
3450
3500
3550
3600
3650
3700



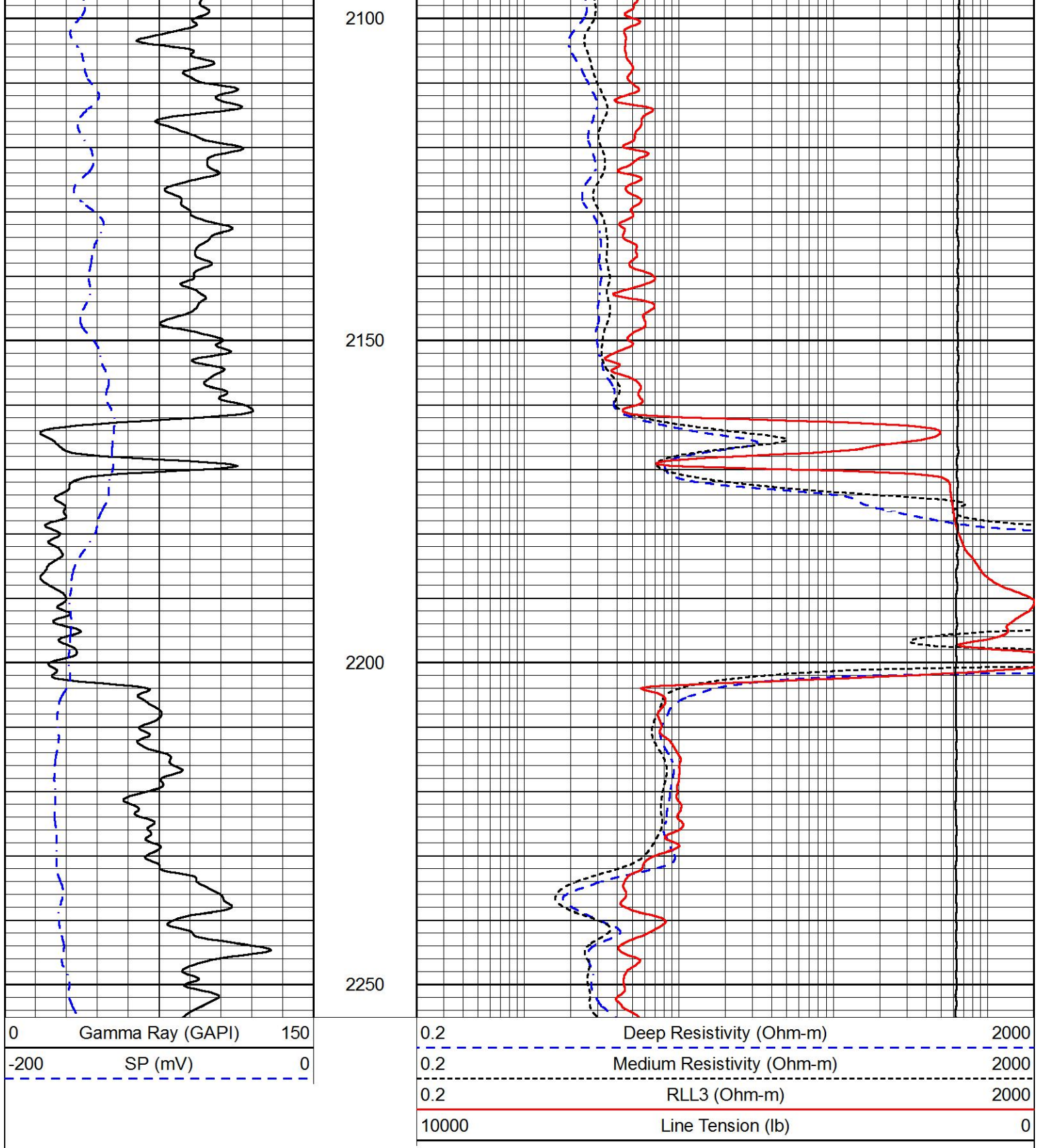




MAIN PASS

Database File brito_polifka 1-10.db
 Dataset Pathname STKML/pass4.1
 Presentation Format dil
 Dataset Creation Wed Oct 25 01:40:39 2017
 Charted by Depth in Feet scaled 1:240

0	Gamma Ray (GAPI)	150	0.2	Deep Resistivity (Ohm-m)	2000
-200	SP (mV)	0	0.2	Medium Resistivity (Ohm-m)	2000
			0.2	RLL3 (Ohm-m)	2000
			10000	Line Tension (lb)	0

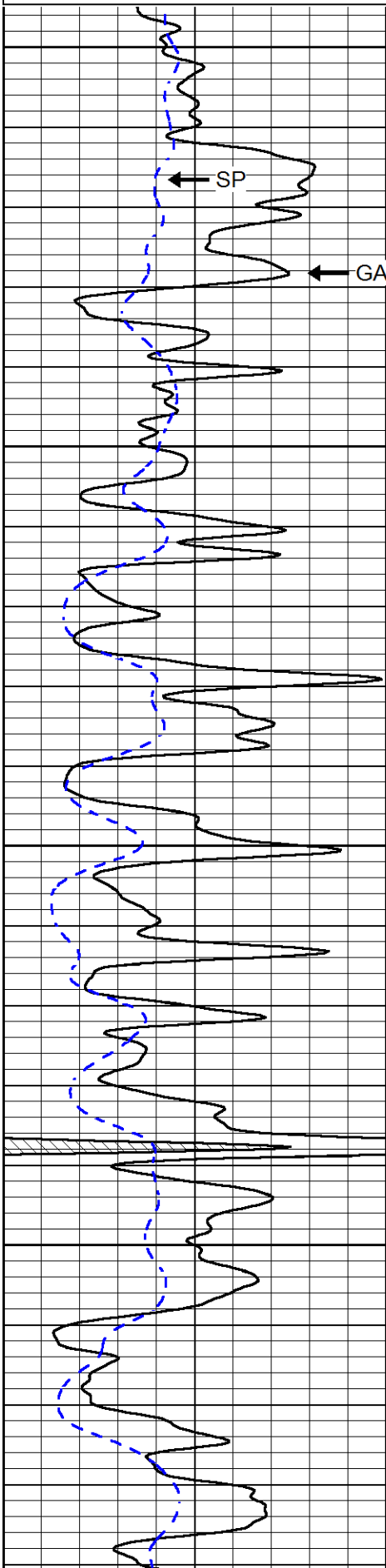


MAIN PASS

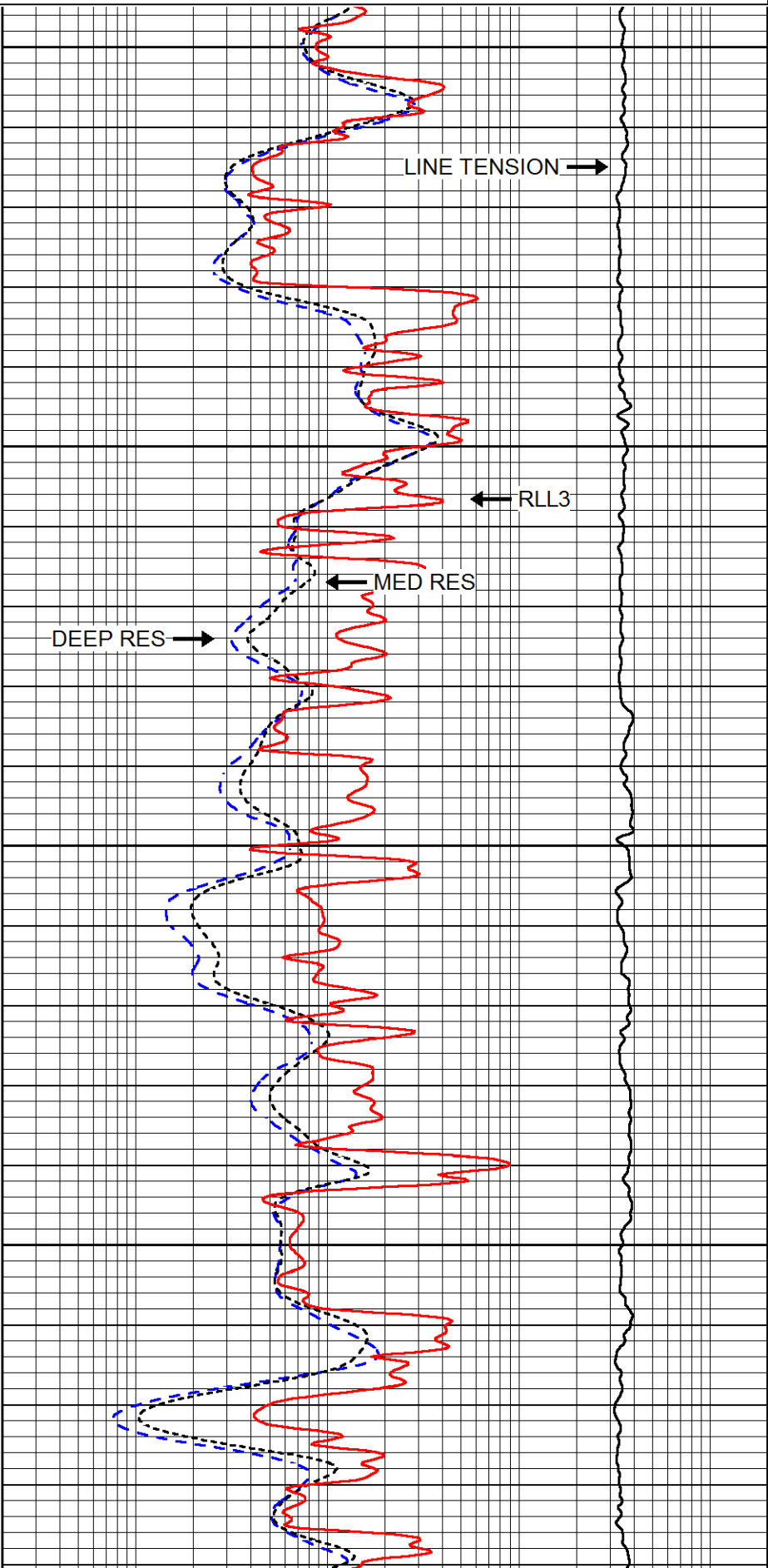
Database File brito_polifka 1-10.db
 Dataset Pathname STKML/pass3.1
 Presentation Format dil
 Dataset Creation Wed Oct 25 01:11:34 2017
 Charted by Depth in Feet scaled 1:240

0	Gamma Ray (GAPI)	150
-200	SP (mV)	0

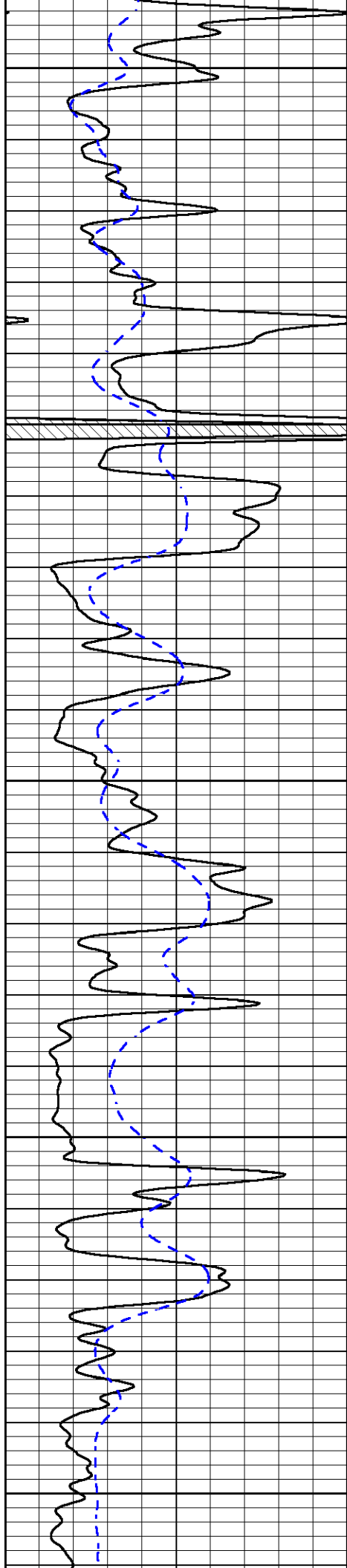
0.2	Deep Resistivity (Ohm-m)	2000
0.2	Medium Resistivity (Ohm-m)	2000
0.2	RLL3 (Ohm-m)	2000
10000	Line Tension (lb)	0



3600
3650
3700
3750



LINE TENSION →
← RLL3
← MED RES
← DEEP RES



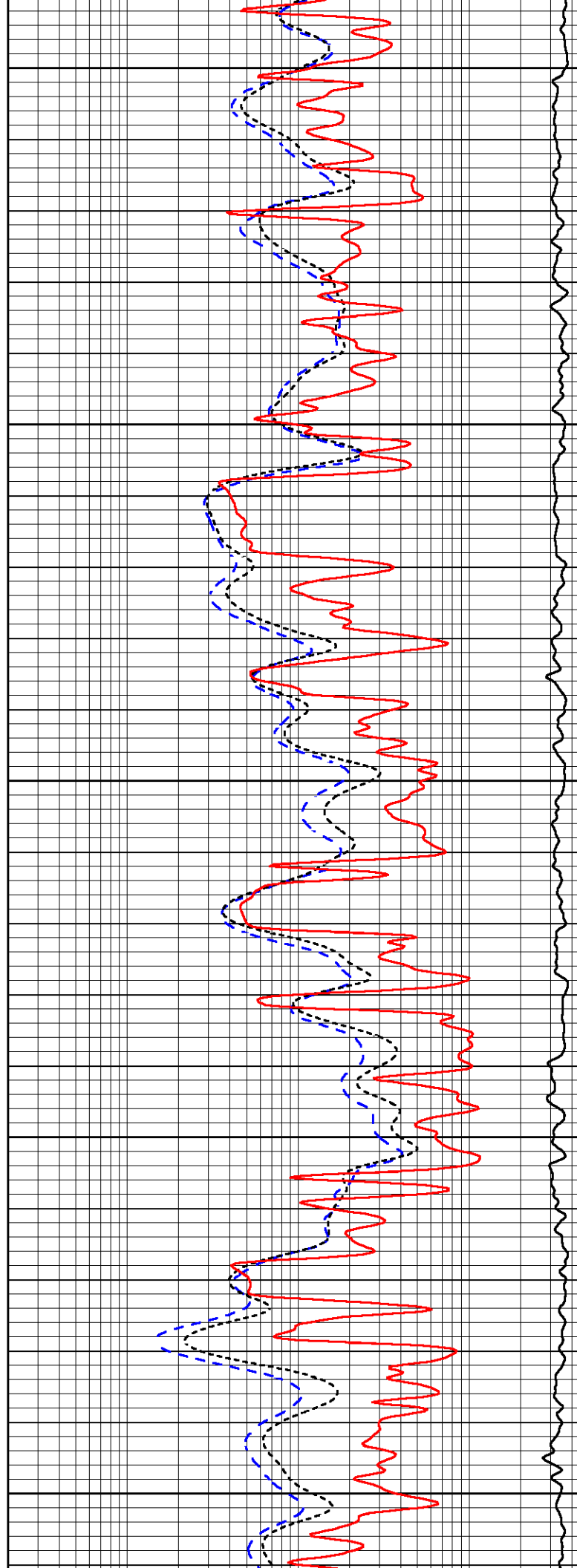
3800

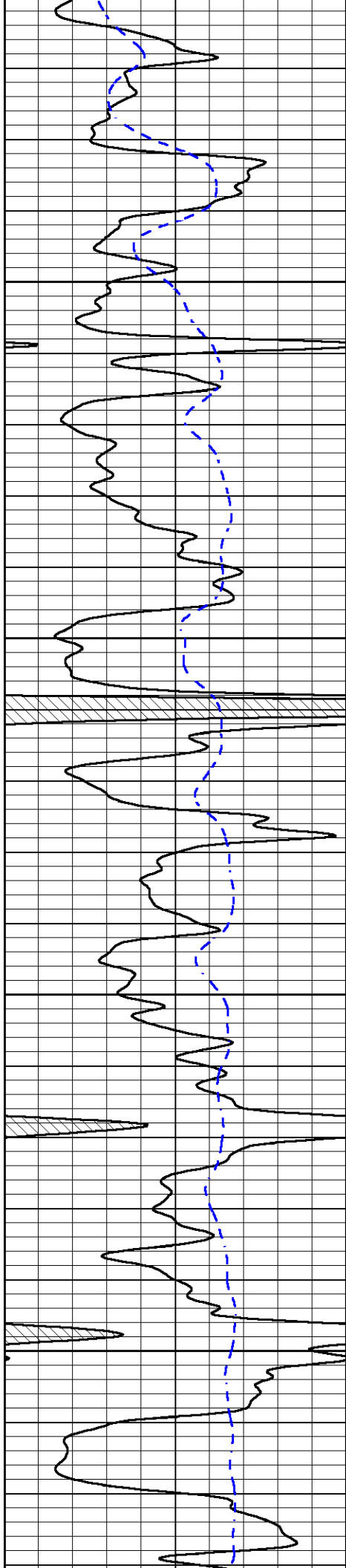
3850

3900

3950

4000



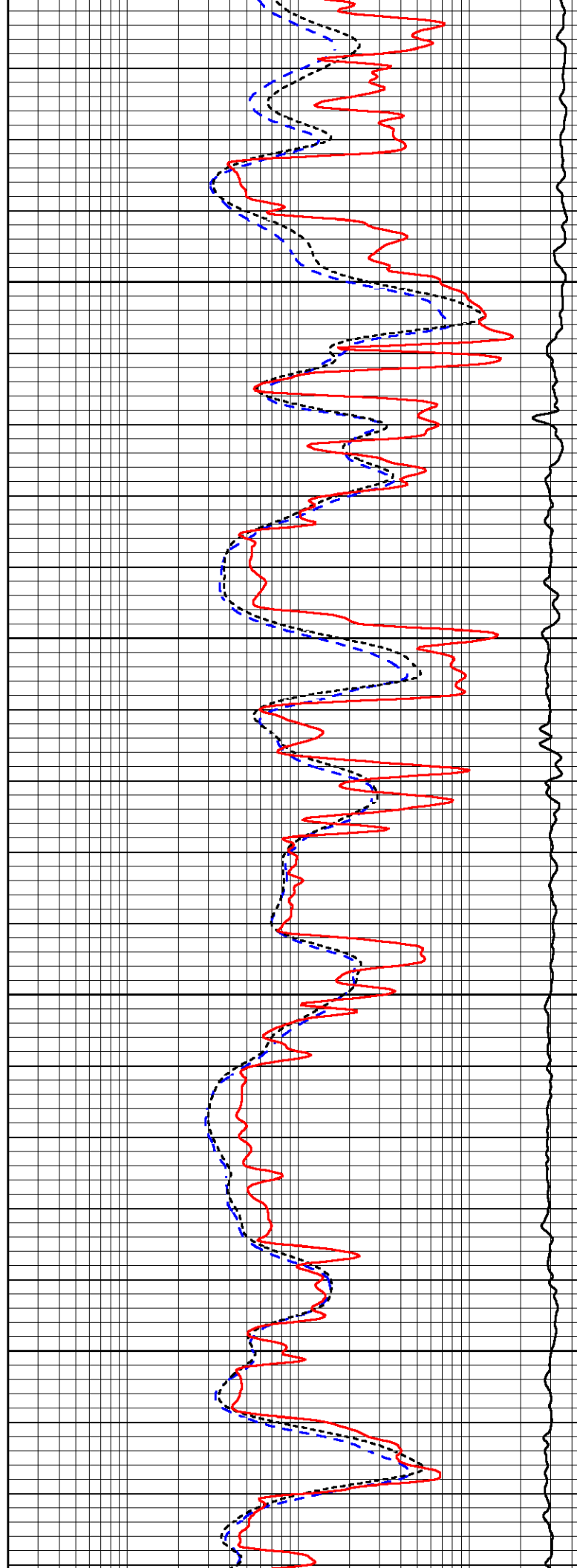


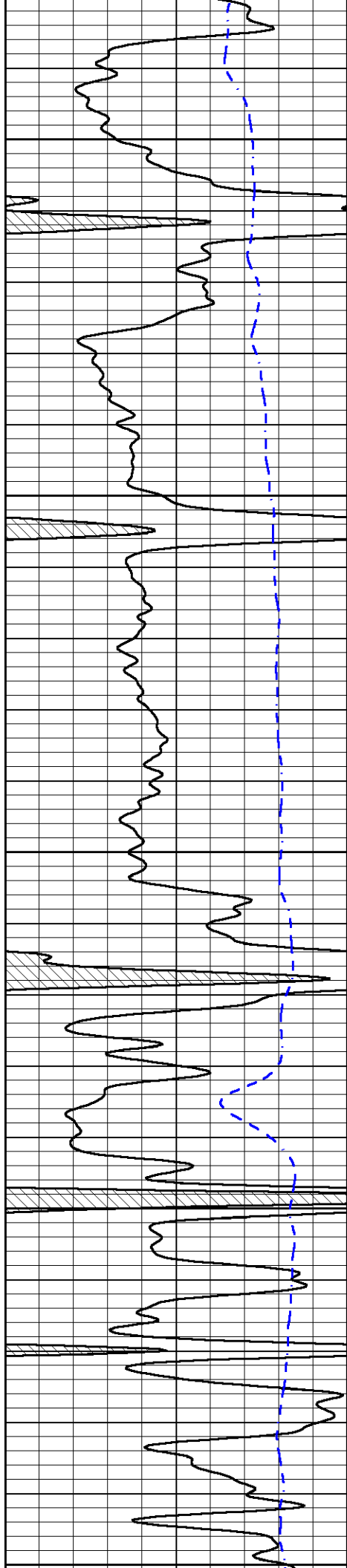
4050

4100

4150

4200





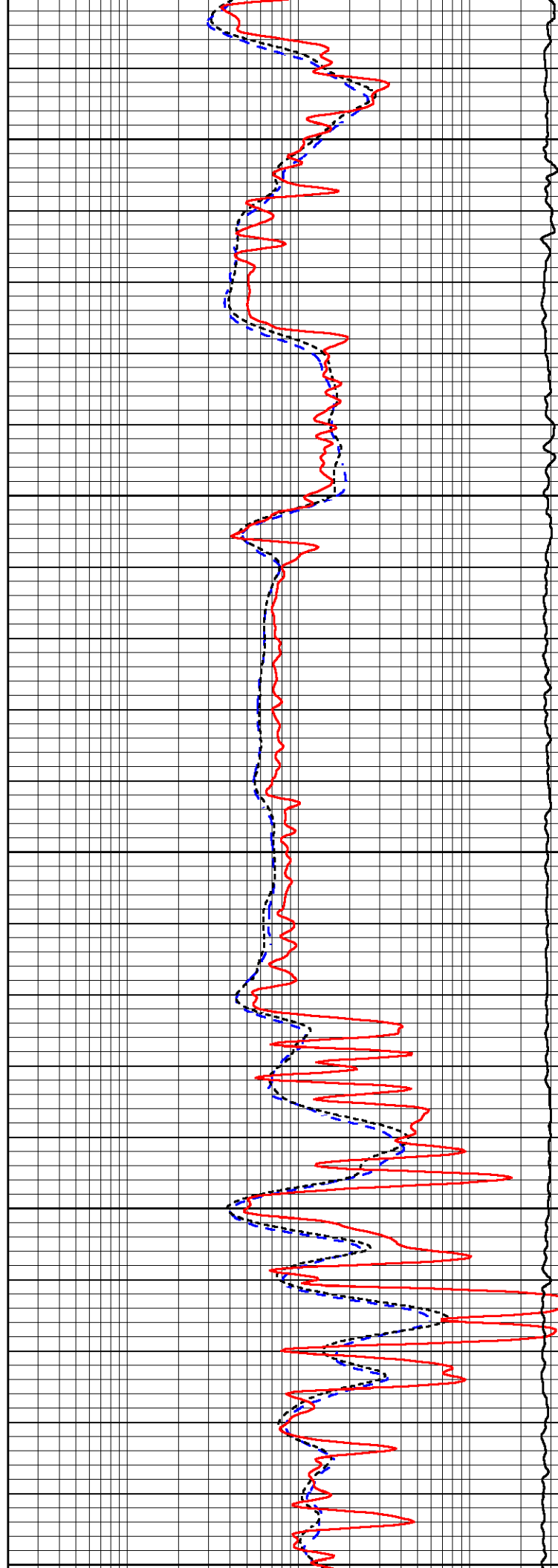
4250

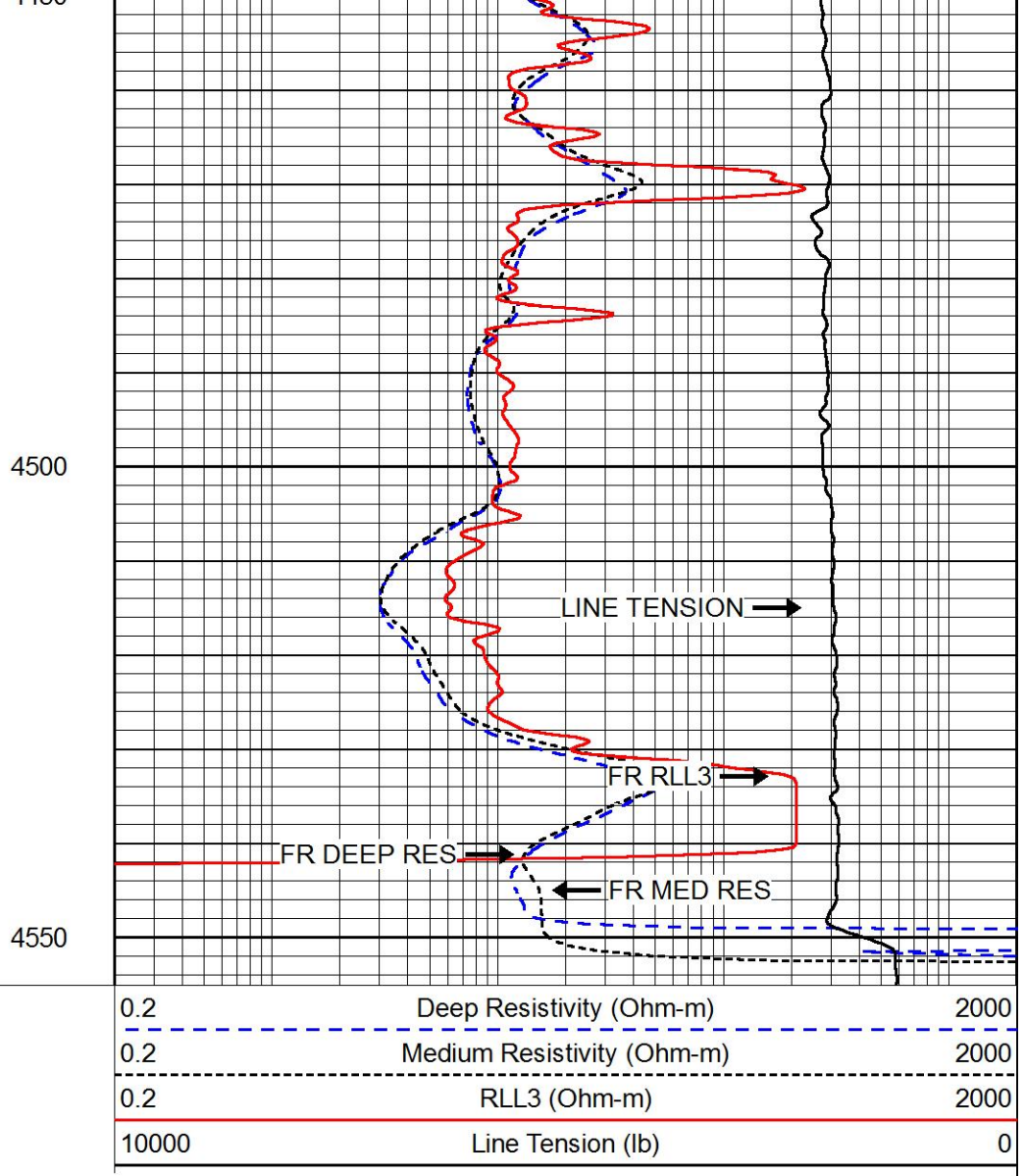
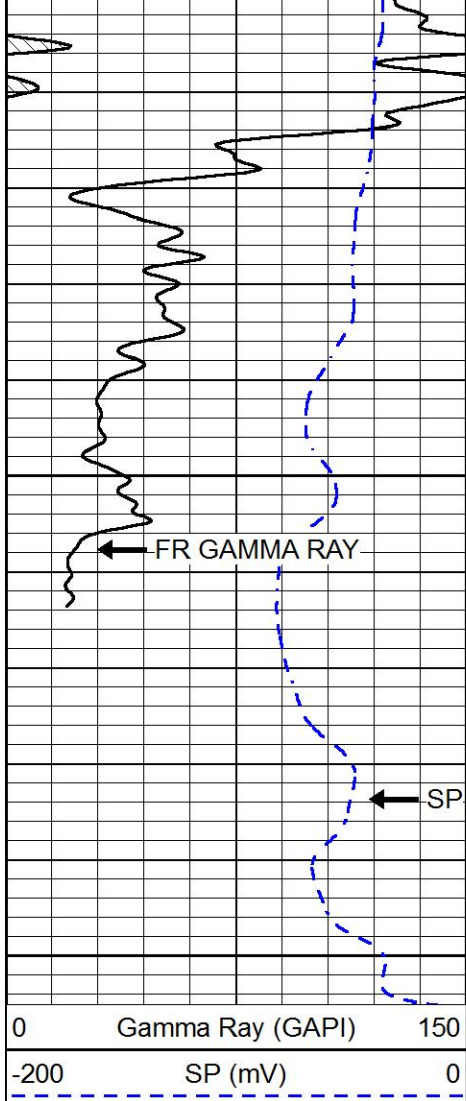
4300

4350

4400

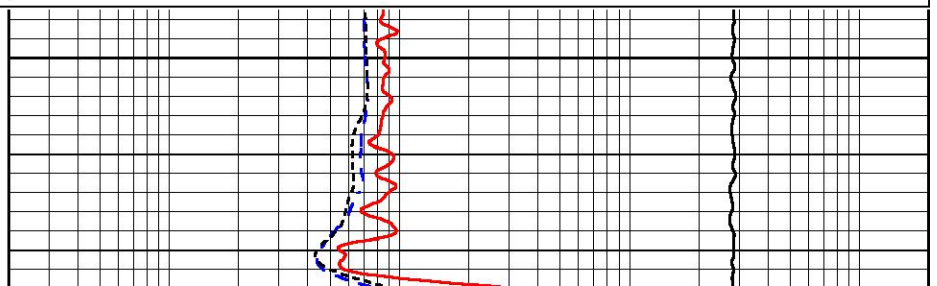
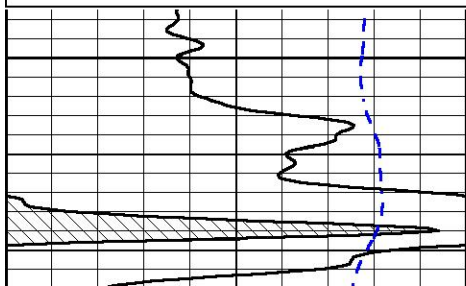
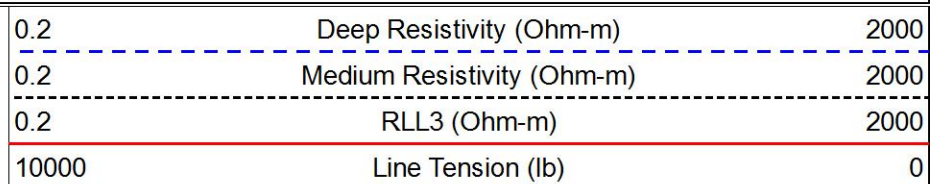
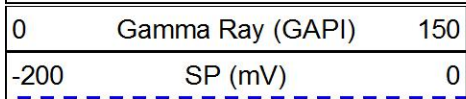
4450

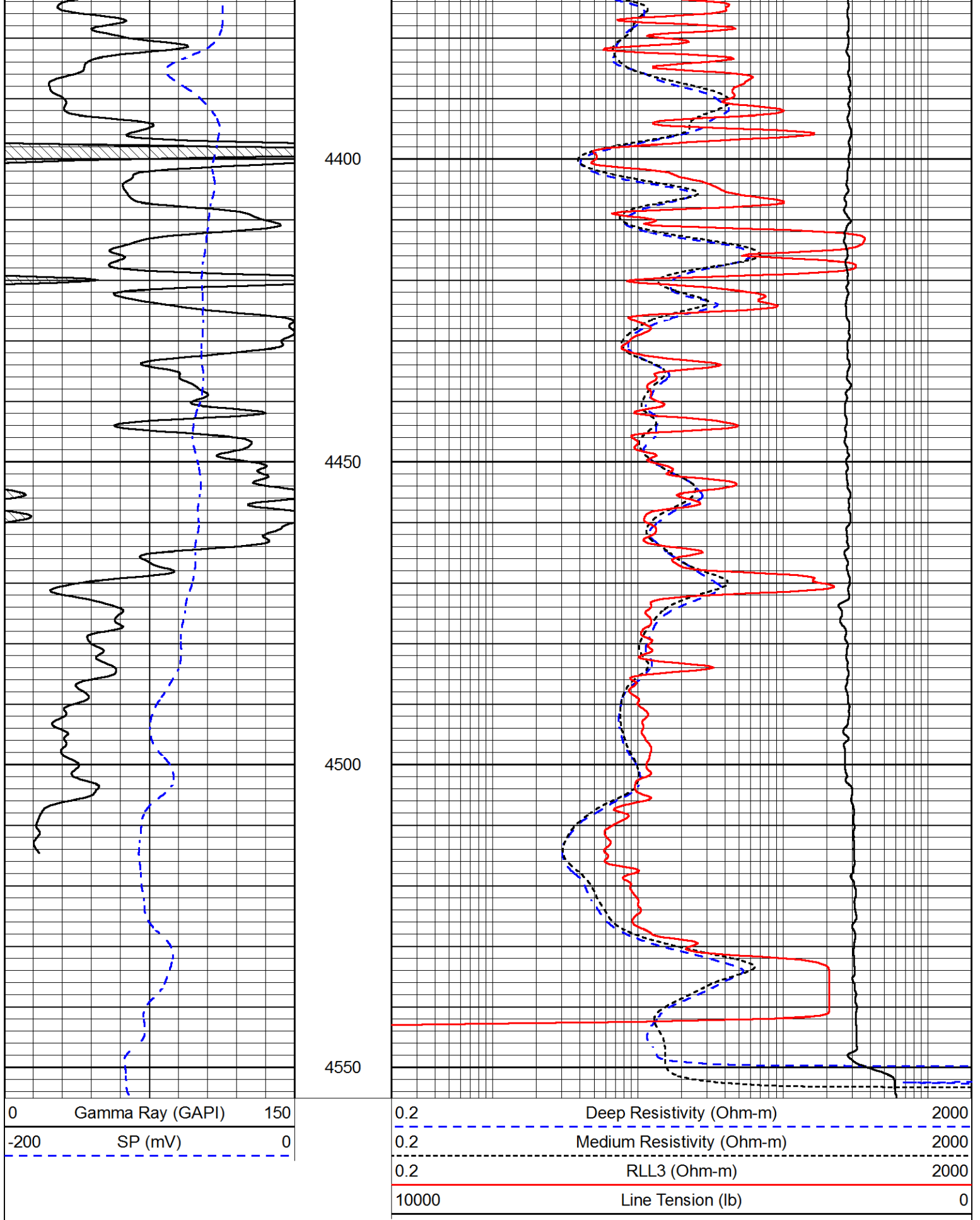




REPEAT SECTION

Database File brito_polifka 1-10.db
 Dataset Pathname STKML/pass2.1
 Presentation Format dil
 Dataset Creation Wed Oct 25 01:10:58 2017
 Charted by Depth in Feet scaled 1:240





Calibration Report

Database File brito_polifka 1-10.db
 Dataset Pathname STKML/pass3.1
 Dataset Creation Wed Oct 25 01:11:24 2017

Dual Induction Calibration Report

Serial-Model: PSI 91-M&W
 Calibration Performed: Wed Sep 13 22:23:16 2017

Loop:	Readings		References			Results	
	Air	Loop	Air	Loop		Gain	Offset
Deep	166.796	835.089	0.000	255.800	mmho/m	0.430	-36.000
Medium	142.009	1348.560	0.000	255.800	mmho/m	0.360	-31.000

Microlog Calibration Report

Serial-Model: PSI-01-PSIML
 Performed: Wed Sep 06 19:50:56 2017

	Readings		References			Results	
	Zero	Cal	Zero	Cal		m	b
Normal	0.0000	1.0000	0.0000	1.0000	Ohm-m	32000.0000	-2.1000
Inverse	0.0000	1.0000	0.0000	1.0000	Ohm-m	47000.0000	-2.3000
Caliper	1.0001	1.1397	6.5000	18.5000	in	100.0000	-97.3000

Compensated Density Calibration Report

Serial-Model: 90-1031-M&W
 Source / Verifier: 16955B / 2ci
 Master Calibration Performed: Wed Sep 06 19:51:03 2017

Master Calibration

	Density		Far Detector	Near Detector	
Magnesium	1.755	g/cc	4903.44	6153.79	cps
Aluminum	2.640	g/cc	934.50	4021.31	cps
Spine Angle = 75.61			Density/Spine Ratio = 0.517		
	Size		Reading		
Small Ring	8.00	in	1.84		
Large Ring	22.00	in	1.46		

Compensated Neutron Calibration Report

Serial Number: 207-MW
 Tool Model: M&W
 Calibration Performed: WED SEP 6 10:30:30 2017

Detector	Readings	Target	Normalization
Short Space	6240.00 cps	1000.00 cps	1.6025
Long Space	460.00 cps	1000.00 cps	1.9500

Gamma Ray Calibration Report

Serial Number: 89
 Tool Model: M&W

Calibration Performed:	1.0	WED	Wed Sep 06 19:51:14 2017
Calibrator Value:	1.0	GAPI	
Background Reading:	0.0	cps	
Calibrator Reading:	1.0	cps	
Sensitivity:	0.6000	GAPI/cps	



PIONEER
Pioneer Energy Services

Company	BRITO OIL COMPANY, INC.
Well	POLIFKA #1-10
Field	WILDCAT
County	GOVE
State	KANSAS