

Robert D. Hendrix

Petroleum Geologist

GEOLOGIST'S REPORT DRILLING TIME AND SAMPLE LOG

COMPANY Brito Oil Company
 LEASE Polifka #131 Polifka 'A' 1-31
 FIELD Wildcat
 LOCATION 2310' fsl & 2285' fel
 SEC 31 TWSP 12s RGE 26w
 COUNTY Gove STATE Kansas

ELEVATIONS

KB 2637
 DF _____
 GL 2627

Measurements Are All
From Kelly Bushing

CONTRACTOR Southwind Drilling Rig #8
 SPUD 10/16/2017 COMP 10/25/2017
 RTD 4550 LTD 4550
 MUD UP 3450 TYPE MUD Chemical

CASING

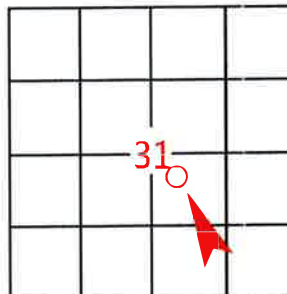
CONDUCTOR _____
 SURFACE 85/8" at 225'
 PRODUCTION _____

SAMPLES SAVED FROM 3600 TO TD
 DRILLING TIME KEPT FROM 3600 TO TD
 SAMPLES EXAMINED FROM 3600 TO TD
 GEOLOGICAL SUPERVISION FROM 3467
 GEOLOGIST ON WELL Robert D. Hendrix

ELECTRICAL SURVEYS

Pioneer wireline services
comp porosity, dual induction,
microresistivity

FORMATION TOPS	ELECTRIC LOG	SAMPLE
Anhydrite	2162 (+475)	2163 (+474)
Topeka	3627 (992)	3870 (994)
Heebner Shale	3849 (1212)	3850 (1213)
Lansing	3886 (1249)	3888 (1251)
Stark Shale	4108 (1474)	4110 (1473)
BKC	4155 (1518)	4160 (1523)
Pawnee	4307 (1670)	4298 (1661)
Cherokee Shale	4397 (1760)	4383 (1746)
Mississippi	4464 (1827)	4472 (1835)



API# 1606322315

REMARKS:

LEGEND

- Dolomite
- Chert
- Cherty LS
- Carb Sh
- Shale
- Limestone
- Sandstone
- Anhydrite

REMARKS

SAMPLE DESCRIPTION

Hydrocarbon Shows

Drill Stem Tests

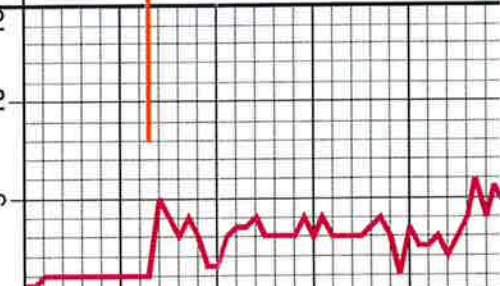
LITHOLOGY

DEPTH

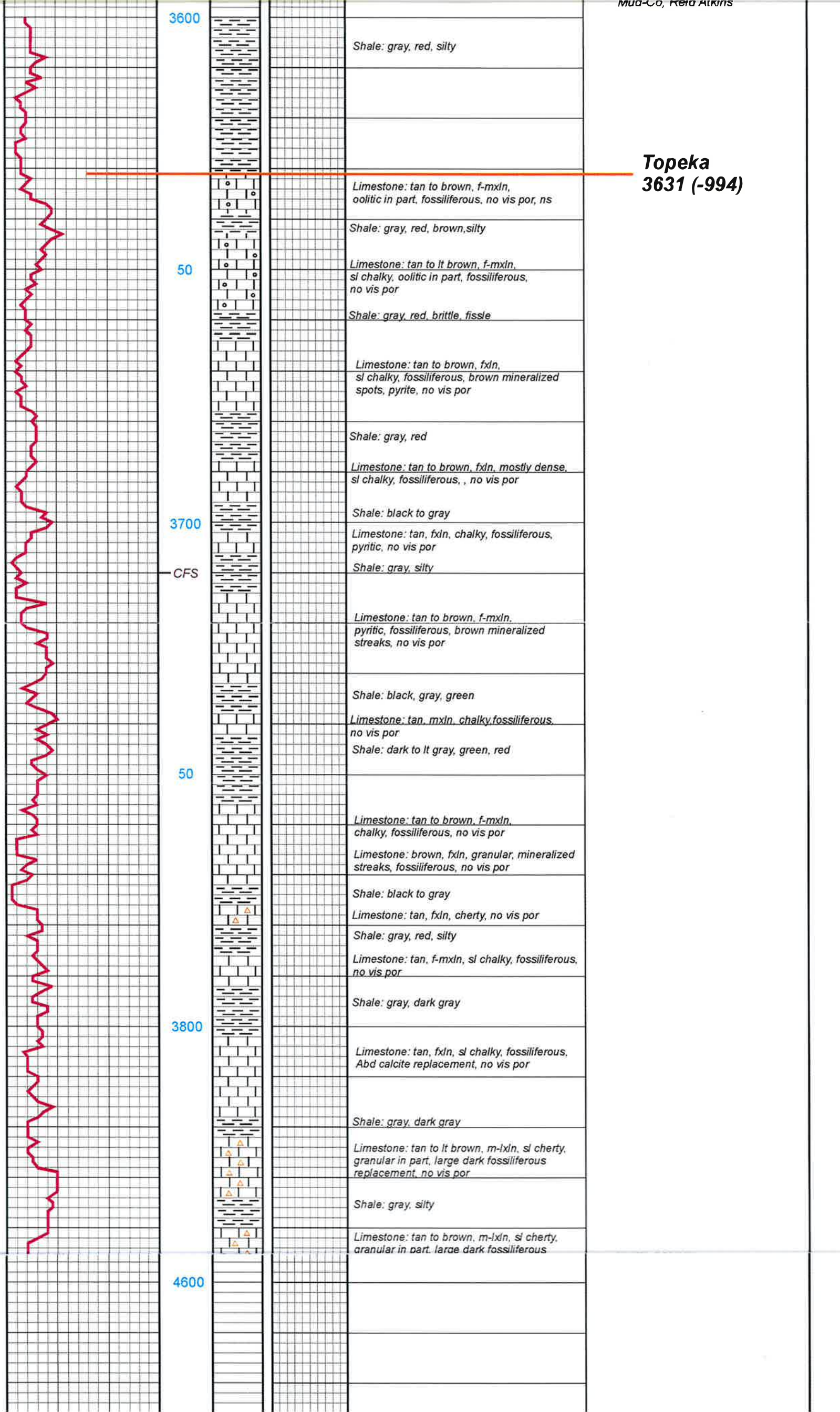
DRILLING TIME IN
MINUTES PER FOOT
Rate of Penetration Decreases

2150

15
10
5



Anhydrite
2163 (+474)



3600

Shale: gray, red, silty

**Topeka
3631 (-994)**

50

Limestone: tan to brown, f-mxn, oolitic in part, fossiliferous, no vis por, ns

Shale: gray, red, brown, silty

Limestone: tan to lt brown, f-mxn, sl chalky, oolitic in part, fossiliferous, no vis por

Shale: gray, red, brittle, fissle

Limestone: tan to brown, fxln, sl chalky, fossiliferous, brown mineralized spots, pyrite, no vis por

Shale: gray, red

Limestone: tan to brown, fxln, mostly dense, sl chalky, fossiliferous, , no vis por

3700

Shale: black to gray

Limestone: tan, fxln, chalky, fossiliferous, pyritic, no vis por

Shale: gray, silty

CFS

Limestone: tan to brown, f-mxn, pyritic, fossiliferous, brown mineralized streaks, no vis por

Shale: black, gray, green

Limestone: tan, mxln, chalky, fossiliferous, no vis por

Shale: dark to lt gray, green, red

50

Limestone: tan to brown, f-mxn, chalky, fossiliferous, no vis por

Limestone: brown, fxln, granular, mineralized streaks, fossiliferous, no vis por

Shale: black to gray

Limestone: tan, fxln, cherty, no vis por

Shale: gray, red, silty

Limestone: tan, f-mxn, sl chalky, fossiliferous, no vis por

Shale: gray, dark gray

3800

Limestone: tan, fxln, sl chalky, fossiliferous, Abd calcite replacement, no vis por

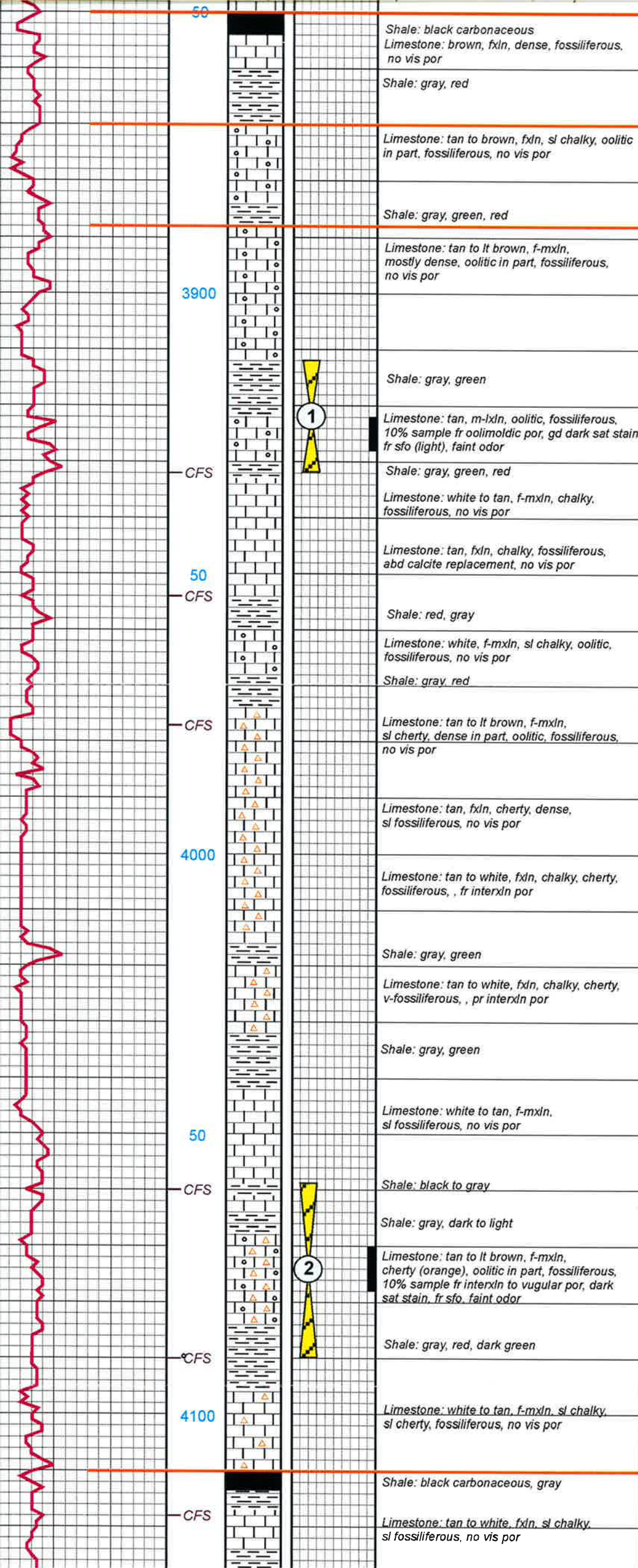
Shale: gray, dark gray

Limestone: tan to lt brown, m-lxn, sl cherty, granular in part, large dark fossiliferous replacement, no vis por

Shale: gray, silty

Limestone: tan to brown, m-lxn, sl cherty, granular in part, large dark fossiliferous

4600



Heebner
3850 (-1213)

Toronto
3870 (-1233)

Lansing
3888 (-1251)

8:00am, 10/21/2017
wt 9.1, vis. 55, lcm 2#
Mud-Co, Reid Atkins

DST #1
3912-3932
30-45-45-60
1st open: slow build to 4"
1st shut in: wk return died 40 min
2nd open: slow build to 4 1/2"
2nd shut in: no return
Rec:
25' ghocm 10/30/60
39' cgo 20/80
hydro: 1897-1881 psi
lf: 13-21 psi
ff: 27-33 psi
sip: 1141-1100 psi
bht: 118° F
gravity: 24.3°

DST #2
4626-4693
30-60-30-90
1st open: bob 9 min
1st shut in: 4 1/2" return
2nd open: bob 21 1/2 min
2nd shut in: 3 1/4" return
Rec:
477' cgo 22/78
20' ghocm 15/25/60
271' gip
hydro: 1989-1975 psi
lf: 21-75 psi
ff: 83-130 psi
sip: 1319-1315 psi
bht: 125° F
gravity: 25°

8:00am, 10/22/2017

wt 9.1, vis. 55, lcm 2#
Mud-Co, Reid Atkins
Pipe Strap:
0.39' short to board

Stark Shale
4110 (-1473)

0.39' short to board

4100

Limestone: white to tan, f-mxln, sl chalky, sl cherty, fossiliferous, no vis por

**Stark Shale
4110 (-1473)**

CFS

Shale: black carbonaceous, gray

Limestone: tan to white, fxln, sl chalky, sl fossiliferous, no vis por

CFS

Shale: gray, black, red, silty

50

Limestone: tan, fxln, sl cherty, fossiliferous, sl pp to vug por, ns

8:00am, 10/23/2017

CFS

**BKC
4160 (-1523)**

Shale: gray, black, red, green laminated

Marmaton Log top

Shale: gray, black, brown, red, silty

wt 9.2, vis. 47, lcm 1#
Mud-Co, Reid Atkins

4200

**Marmaton
4199 (-1562)**

Limestone: tan, fxln, sl oolitic, fossiliferous, no vis por

Shale: gray, black carbonaceous, red, silty

50

Limestone: white, fxln, cherty, v-oolitic, fossiliferous, red stained cement in the interstices, pr interxln por, ns

Shale: gray, green, red, silty

Limestone: tan to brown, f-mxln, chert, oolitic, fossiliferous, no vis por

Limestone: gray to tan, fxln, dense, no vis por

4300

**Pawnee
4298 (-1661)**

Pawnee Log top

Shale: gray, black, olive

Limestone: tan to gray, fxln, dense, fossiliferous, no vis por

Limestone: tan to gray, fxln, dense, no vis por

Limestone: tan to gray to brown, v-fxln, dense, no vis por

50

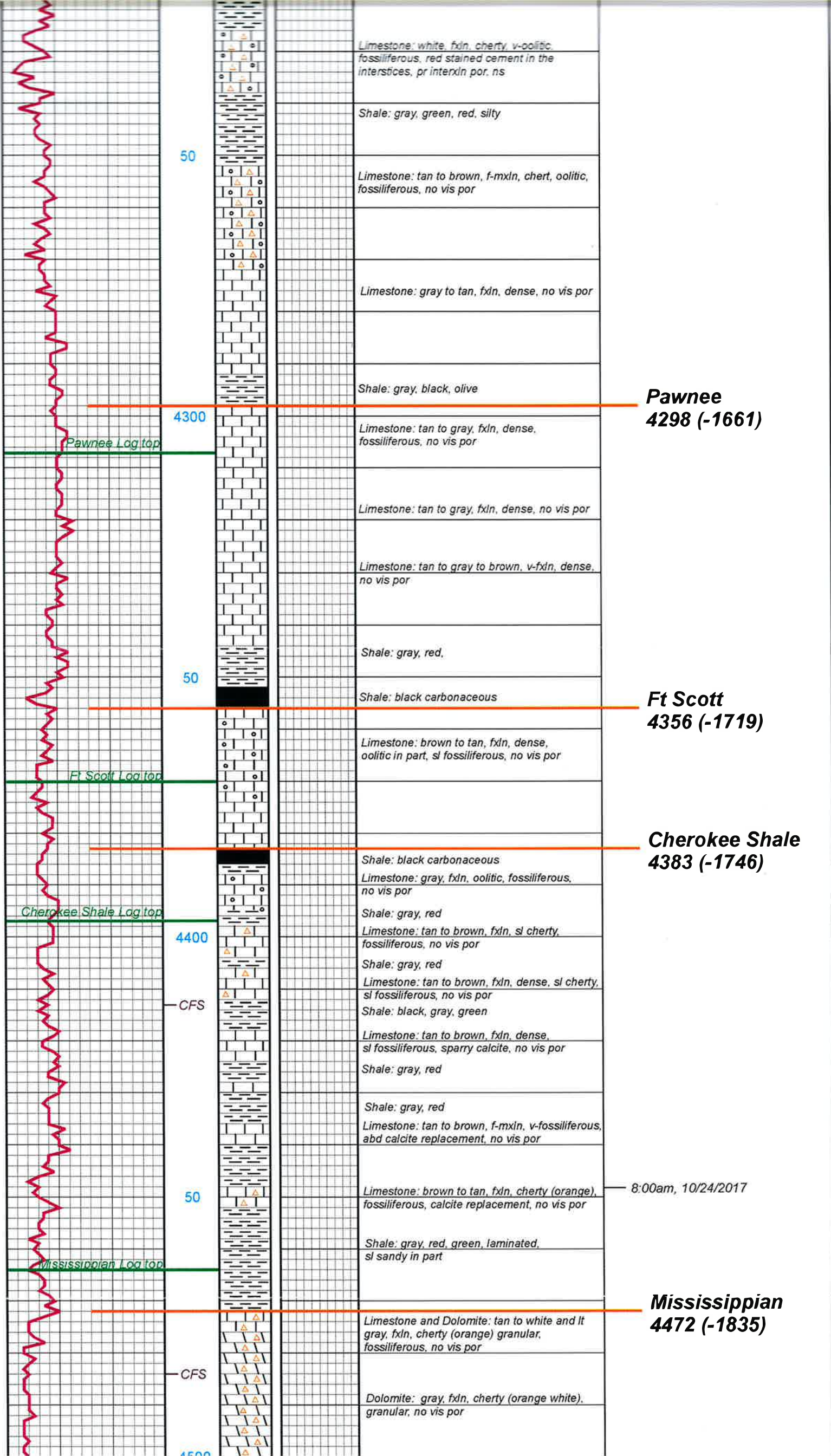
Shale: gray, red,

**Ft Scott
4356 (-1719)**

Shale: black carbonaceous

Ft Scott Log top

Limestone: brown to tan, fxln, dense, oolitic in part, sl fossiliferous, no vis por



Limestone: white, fxdn, cherty, v-oolitic, fossiliferous, red stained cement in the interstices, pr interxn por. ns

Shale: gray, green, red, silty

50

Limestone: tan to brown, f-mxn, chert, oolitic, fossiliferous, no vis por

Limestone: gray to tan, fxdn, dense, no vis por

Shale: gray, black, olive

**Pawnee
4298 (-1661)**

4300

Pawnee Log top

Limestone: tan to gray, fxdn, dense, fossiliferous, no vis por

Limestone: tan to gray, fxdn, dense, no vis por

Limestone: tan to gray to brown, v-fxdn, dense, no vis por

Shale: gray, red,

50

Shale: black carbonaceous

**Ft Scott
4356 (-1719)**

Ft Scott Log top

Limestone: brown to tan, fxdn, dense, oolitic in part, sl fossiliferous, no vis por

**Cherokee Shale
4383 (-1746)**

Cherokee Shale Log top

Shale: black carbonaceous
Limestone: gray, fxdn, oolitic, fossiliferous, no vis por

4400

Shale: gray, red
Limestone: tan to brown, fxdn, sl cherty, fossiliferous, no vis por

CFS

Shale: gray, red
Limestone: tan to brown, fxdn, dense, sl cherty, sl fossiliferous, no vis por

Shale: black, gray, green
Limestone: tan to brown, fxdn, dense, sl fossiliferous, sparry calcite, no vis por

Shale: gray, red

Limestone: tan to brown, f-mxn, v-fossiliferous, abd calcite replacement, no vis por

50

Limestone: brown to tan, fxdn, cherty (orange), fossiliferous, calcite replacement, no vis por

8:00am, 10/24/2017

Shale: gray, red, green, laminated, sl sandy in part

Mississippian Log top

**Mississippian
4472 (-1835)**

CFS

Limestone and Dolomite: tan to white and lt gray, fxdn, cherty (orange) granular, fossiliferous, no vis por

Dolomite: gray, fxdn, cherty (orange white), granular, no vis por

4500

