



# DUAL COMP POROSITY LOG

Pioneer Energy Services

Company BRITO OIL COMPANY, INC.  
 Well POLIFKA #1-10  
 Field WILDCAT  
 County GOVE State KANSAS

Company BRITO OIL COMPANY, INC.  
 Well POLIFKA #1-10  
 Field WILDCAT  
 County GOVE  
 State KANSAS

Location: API #: 15-063-22315-00-00  
 2310' FSL & 2285' FEL  
 SEC 31 TWP 12S RGE 26W  
 Permanent Datum GROUND LEVEL Elevation 2627'  
 Log Measured From KELLY BUSHING  
 Drilling Measured From KELLY BUSHING  
 Other Services  
 CNL/CDL  
 DIL  
 Elevation  
 K.B. 2637'  
 D.F. N/A  
 G.L. 2627'

Date	10/24/2017
Run Number	ONE
Type Log	CNL/CDL
Depth Driller	4550'
Depth Logger	4550'
Bottom Logged Interval	4521'
Top Logged Interval	3600'
Type Fluid In Hole	CHEMICAL
Salinity, PPM CL	4100
Density	9.3
Level	FULL
Max. Rec. Temp. F	122
Operating Rig Time	3 HOURS
Equipment -- Location	91 HAYS
Recorded By	D. SCHMIDT
Witnessed By	ROBERT HENDRIX

Borehole Record		Casing Record					
Run No.	Bit	From	To	Size	Wgt.	From	To
ONE	12.25"	0'	225'	8.625"	23#	0'	225'
TWO	7.875"	225'	TD				

<<< Fold Here >>>

All interpretations are opinions based on inferences from electrical or other measurements and Pioneer Wireline Services, LLC cannot and does not guarantee the accuracy or correctness of any interpretation, and Pioneer Wireline Services, LLC will not be liable or responsible for any loss, costs, damages, or expenses incurred or sustained by anyone resulting from any interpretation made by any of our officers, agents or employees.

Comments

N/A DENOTES NOT AVAILABLE OR NON-APPLICABLE.

QUINTER,  
 6 SOUTH, 1/2 WEST,  
 SOUTH INTO

Log Measured From: KELLY BUSHING 10 Ft. Above Permanent Datum

THANK YOU FOR USING PIONEER ENERGY SERVICES  
[www.pioneerenergy.com](http://www.pioneerenergy.com) 785-625-3858

Your Pioneer Energy Services Crew

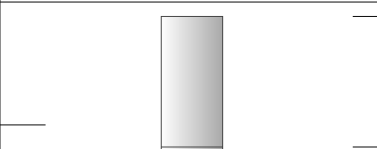
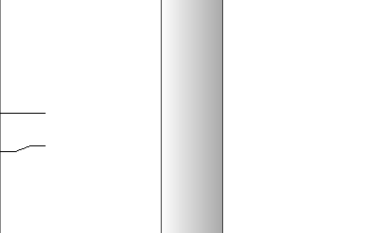
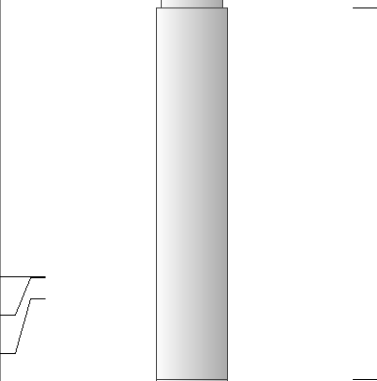
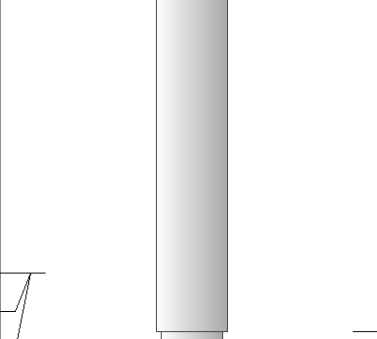
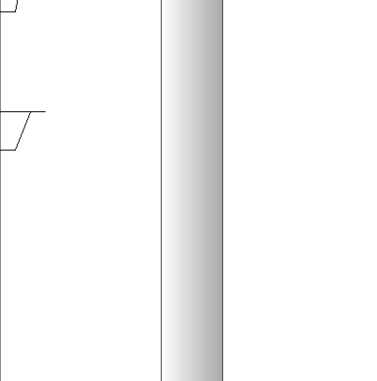
Engineer: D. SCHMIDT  
 Operator:  
 Operator:  
 Operator:

This Log Record Was Witnessed By

Primary Witness: ROBERT HENDRIX  
 Secondary Witness:  
 Secondary Witness:  
 Secondary Witness:

Top - Bottom

M	A	SZCOR	NPORSEL	FLUIDDEN g/cc	MATRXDEN g/cc	SPSHIFT mV	SNDERRM mmho/m
2	1	Off	Limestone	1	2.71	165	0
SNDERR mmho/m	SRFTEMP degF	CASETHCK in	CASEOD in	PERFS	TDEPTH ft	BOTTEMP degF	BOREID in
0	50	0	5.5	0	4550	122	7.875

Sensor	Offset (ft)	Schematic	Description	Length (ft)	O.D. (in)	Weight (lb)
GR	40.58		GR-M&W (89)	3.00	3.50	50.00
CNLSC CNSSC	37.48 36.73		CNT-M&W (207-MW)	5.50	3.50	100.00
LSD DCAL SSD	28.43 28.42 27.93		CDL-M&W (90-1031)	8.50	4.00	250.00
MCAL MI MN	19.83 19.83 19.83		ML-PSIML (PSI-01) GO Micro log tools converted to Simplec electronics	7.58	4.00	65.00
RLL3F RLL3	15.80 15.80					

CILD 8.00

CILM 4.70

SP 0.20

DIL-M&W (PSI 91)

18.50

3.50

220.00

Dataset: brito\_polifka 1-10.db: field/well/STKML/pass3.1  
 Total length: 43.08 ft  
 Total weight: 685.00 lb  
 O.D.: 4.00 in

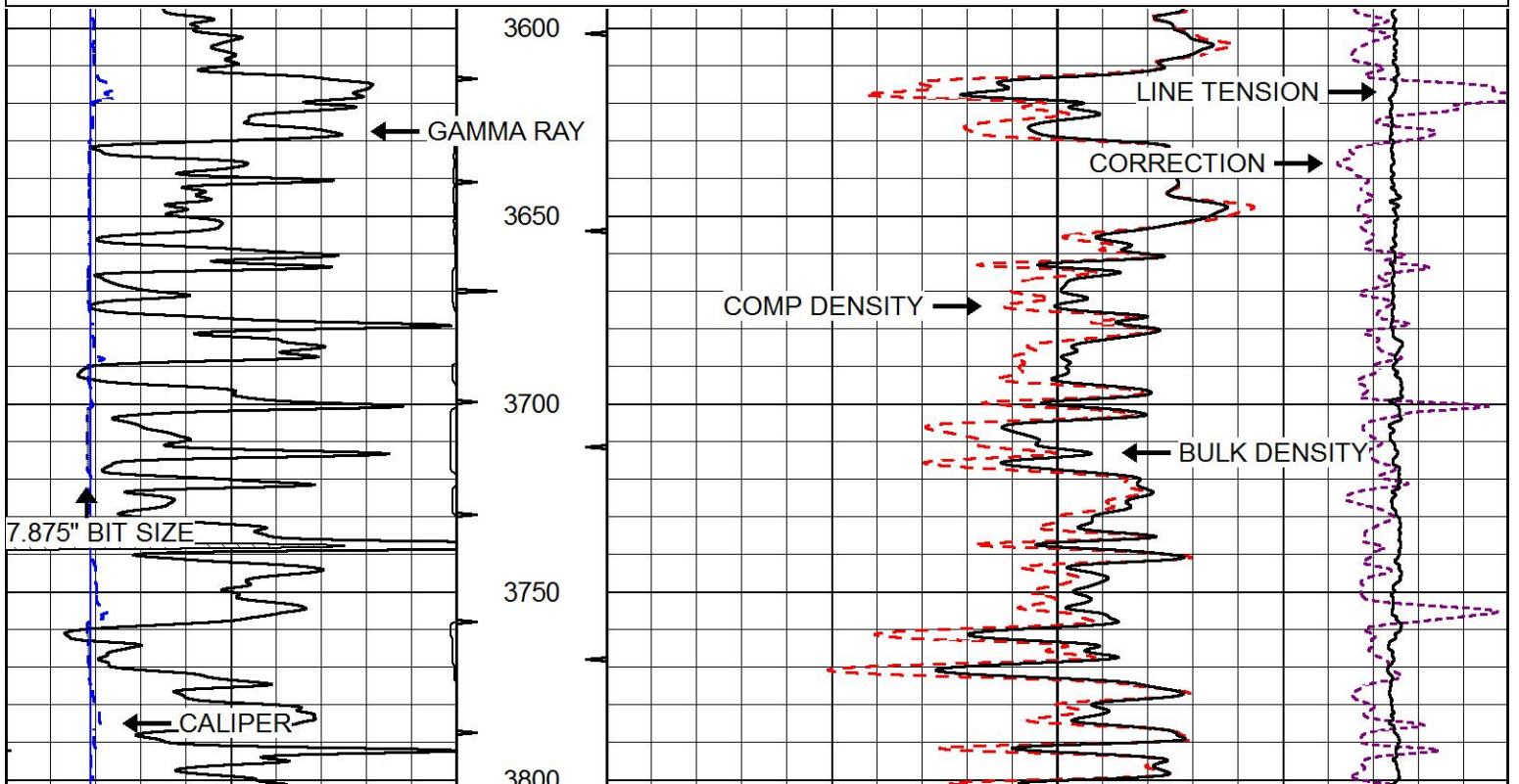


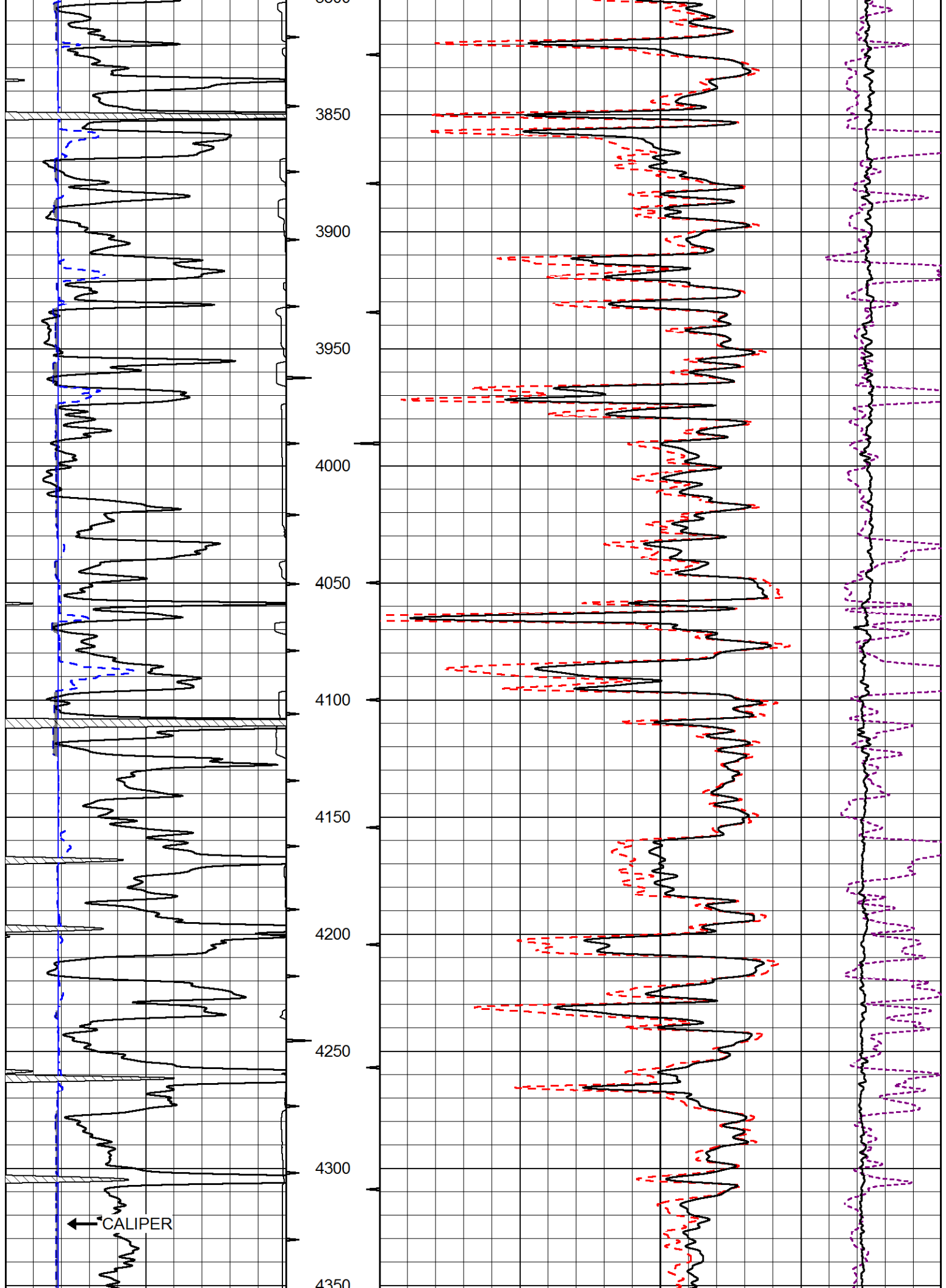
# MAIN PASS

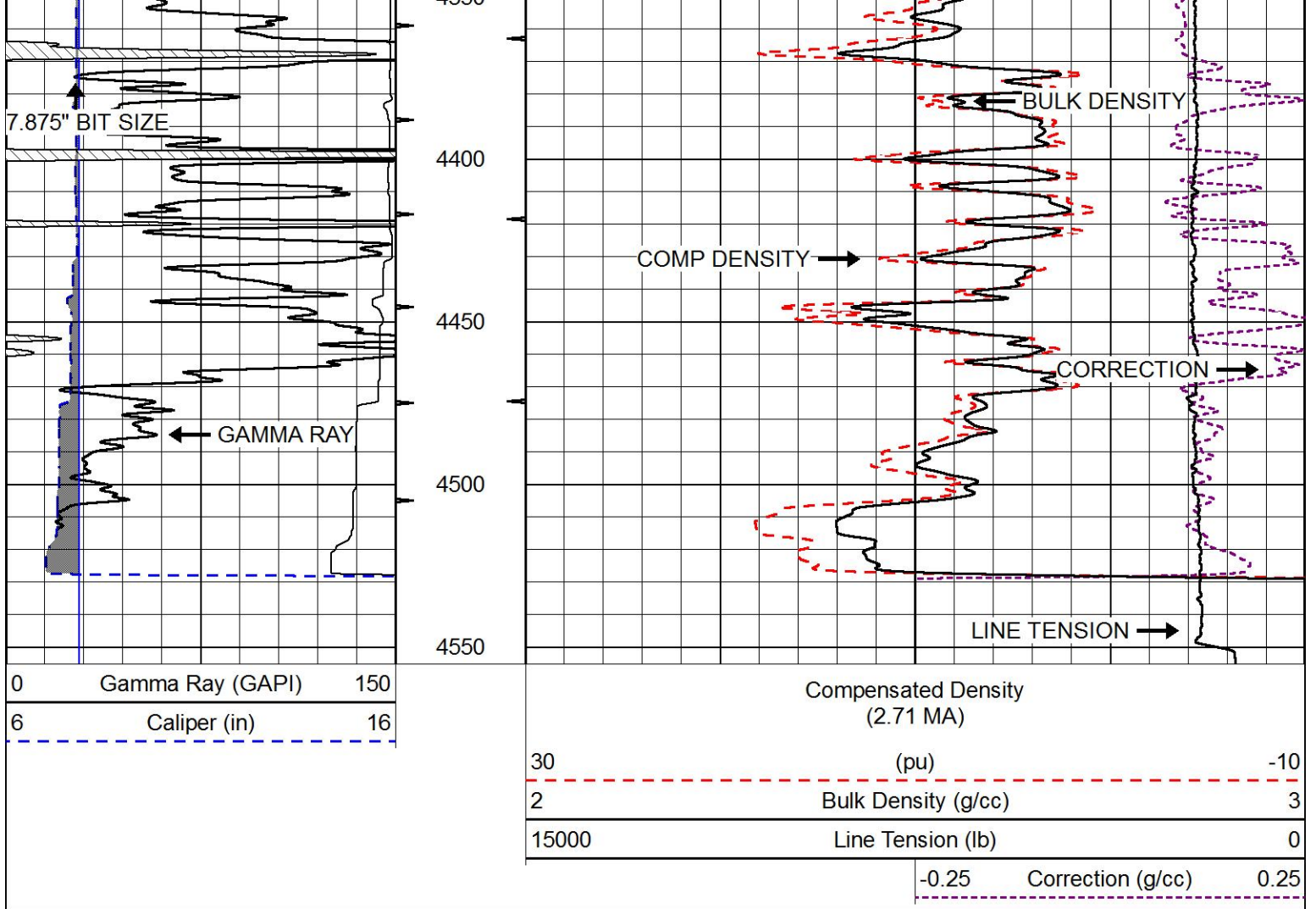
Database File: brito\_polifka 1-10.db  
 Dataset Pathname: STKML/pass3.1  
 Presentation Format: cdl  
 Dataset Creation: Wed Oct 25 01:11:34 2017  
 Charted by: Depth in Feet scaled 1:600

0	Gamma Ray (GAPI)	150
6	Caliper (in)	16

Compensated Density (2.71 MA)	
30	(pu) -10
-----	
2	Bulk Density (g/cc) 3
-----	
15000	Line Tension (lb) 0
-----	
-0.25	Correction (g/cc) 0.25
-----	



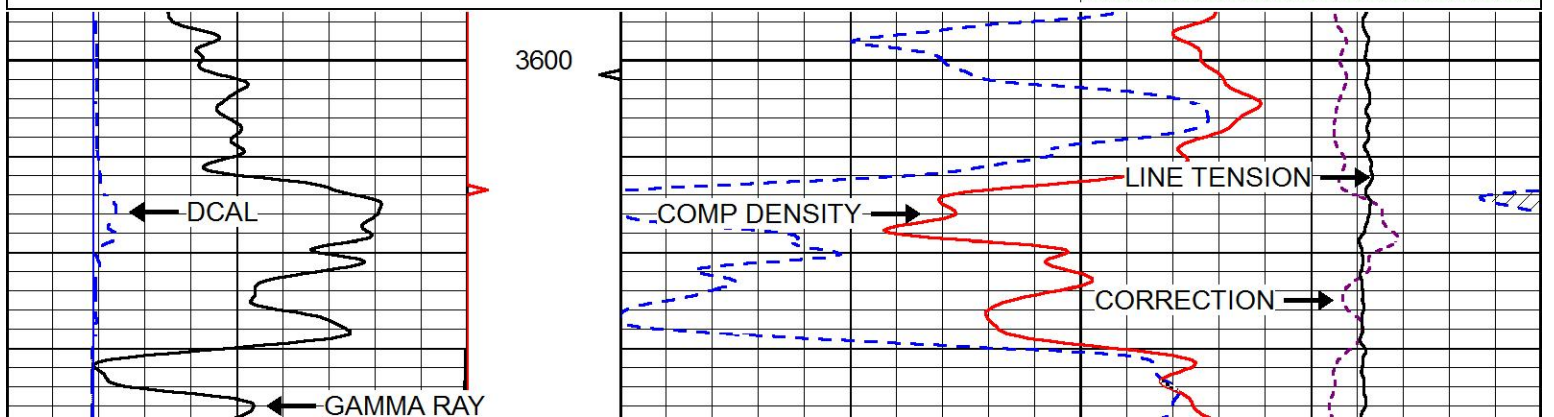


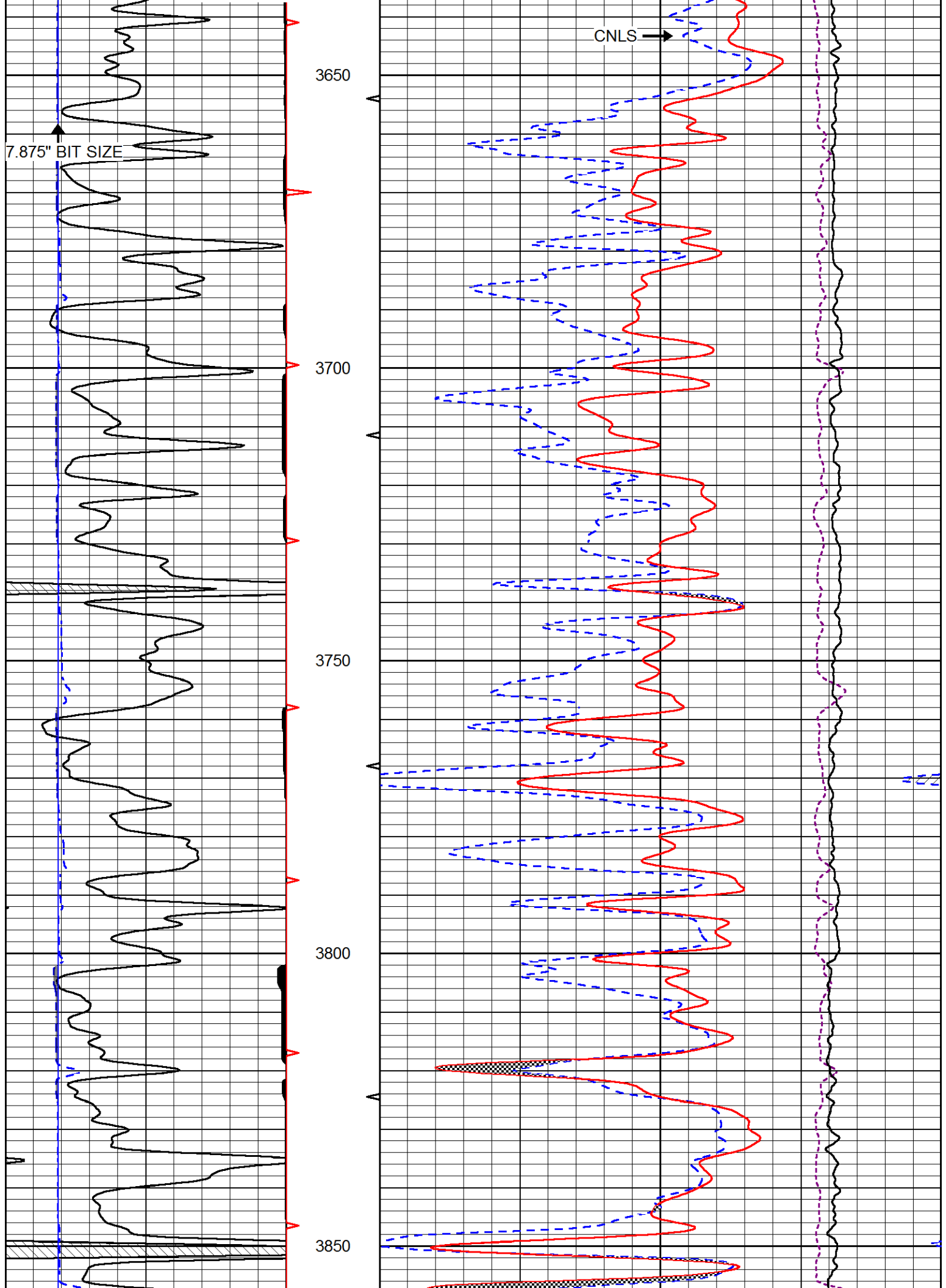


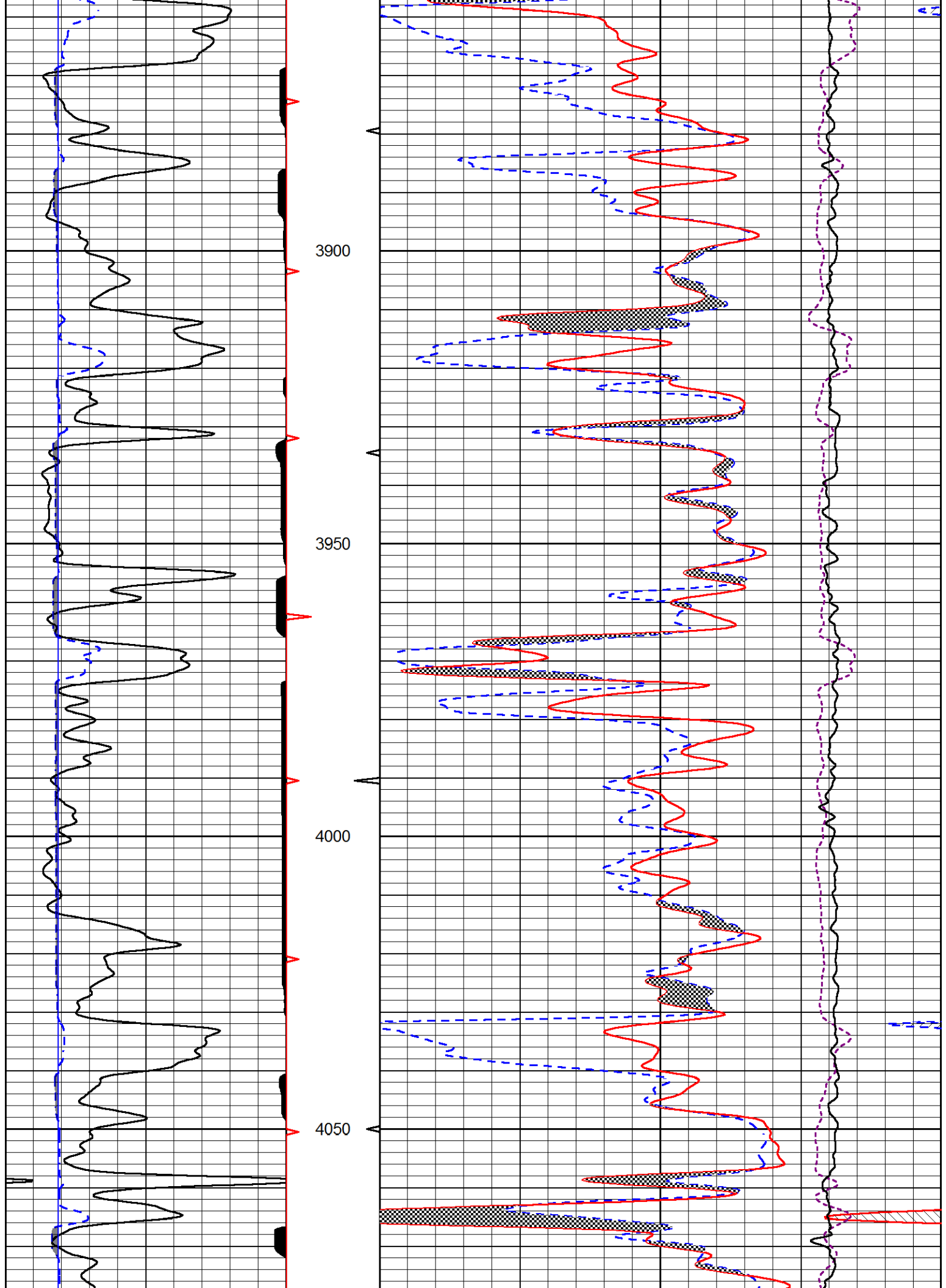
# MAIN PASS

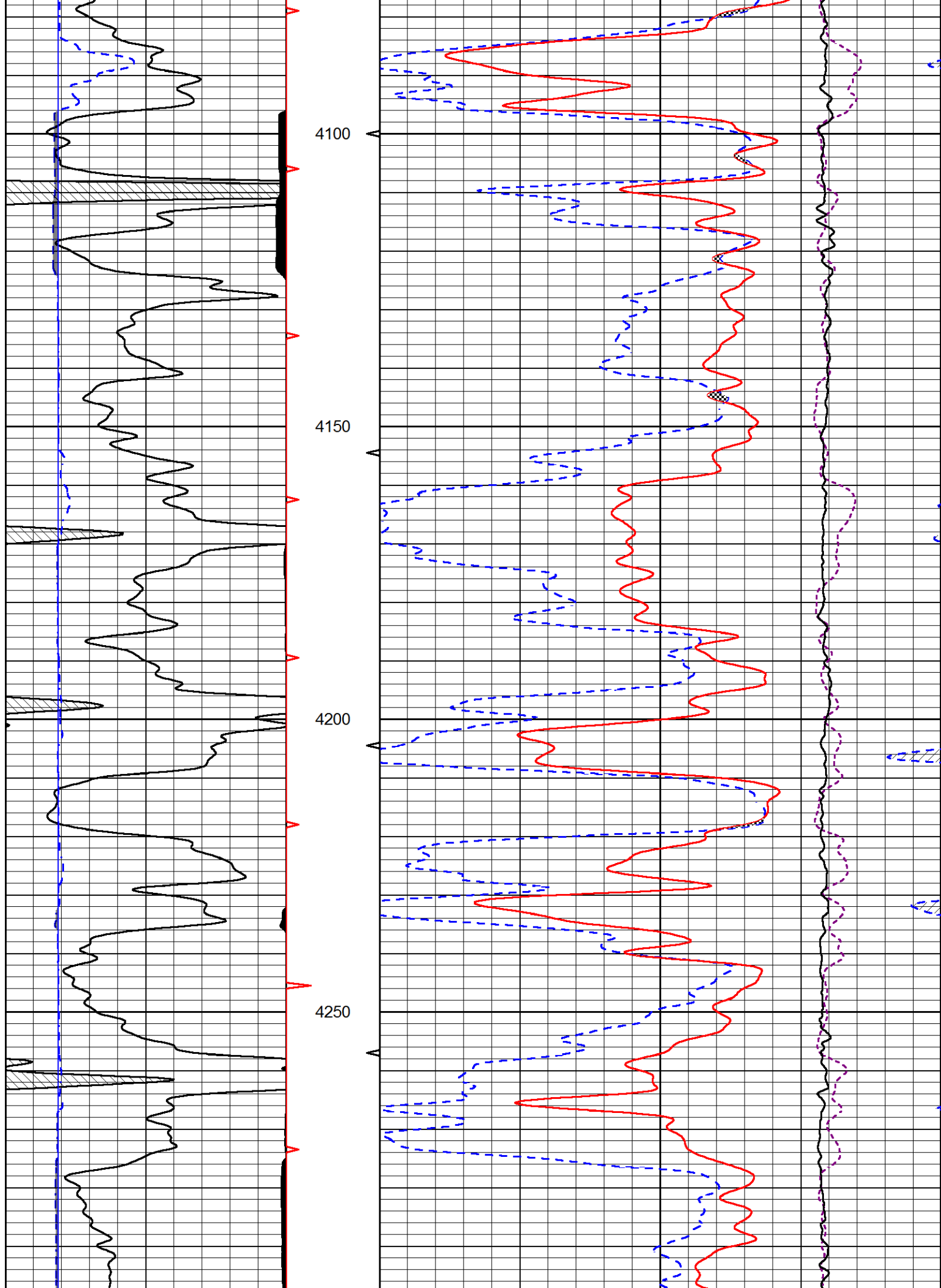
Database File      brito\_polifka 1-10.db  
 Dataset Pathname    STKML/pass3.1  
 Presentation Format    cndlspec  
 Dataset Creation      Wed Oct 25 01:11:34 2017  
 Charted by            Depth in Feet scaled 1:240

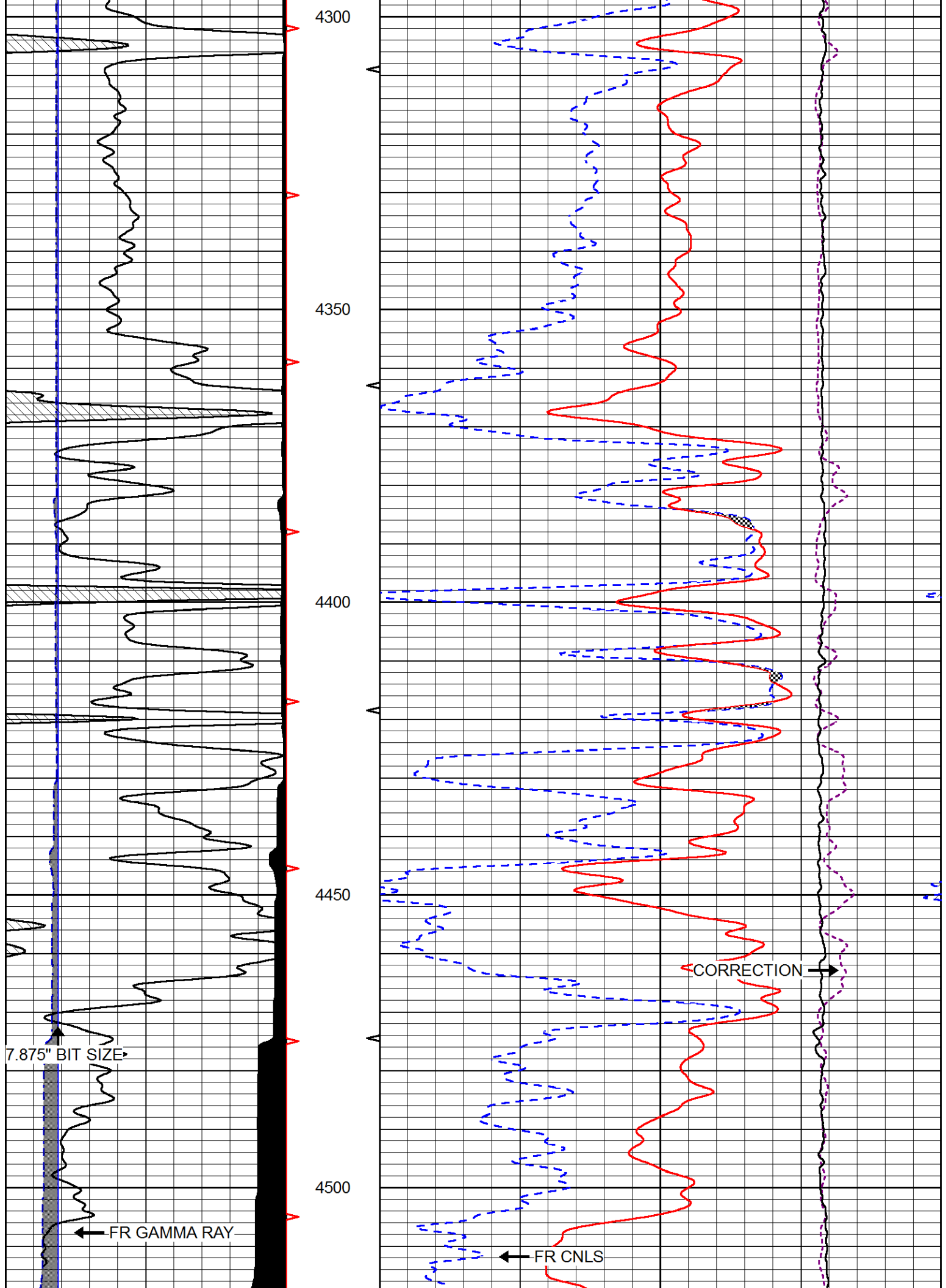
0	Gamma Ray (GAPI)	150	30	CNLS (pu)	-10
6	DCAL (in)	16	30	Compensated Density 2.71 g/cc (pu)	-10
			10000	Line Tension (lb)	0
			-0.75	Correction (g/cc)	0.75

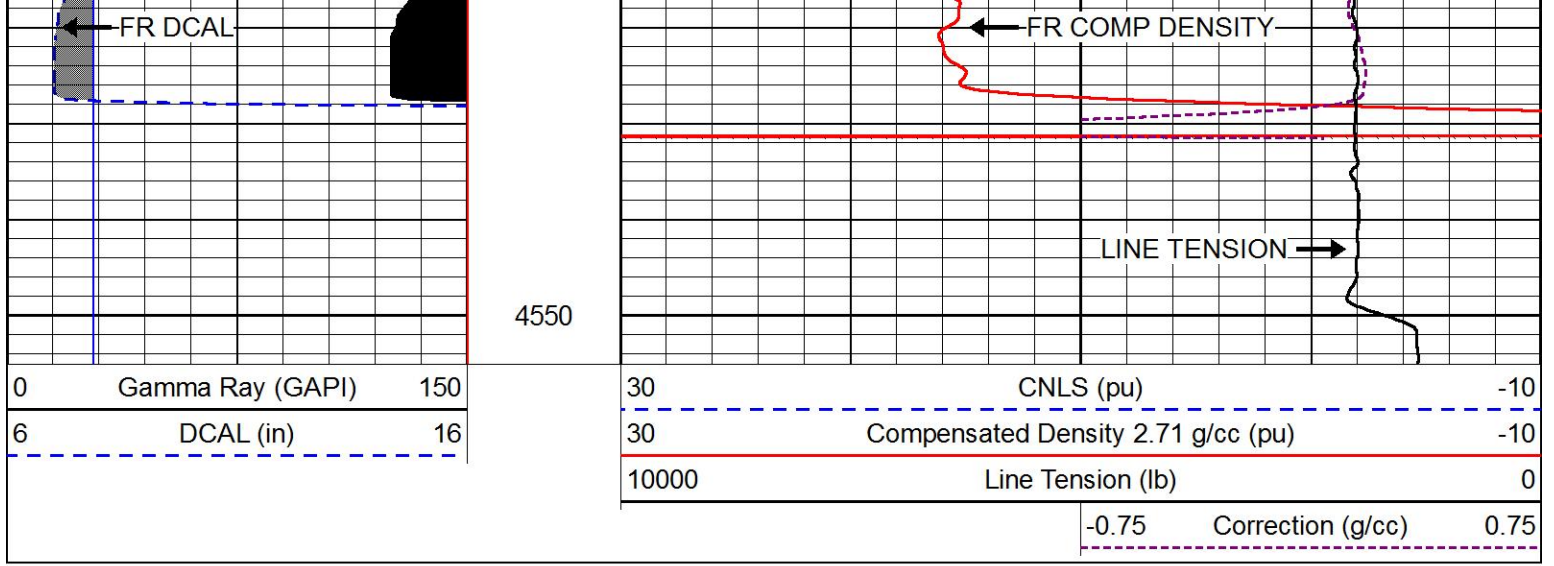






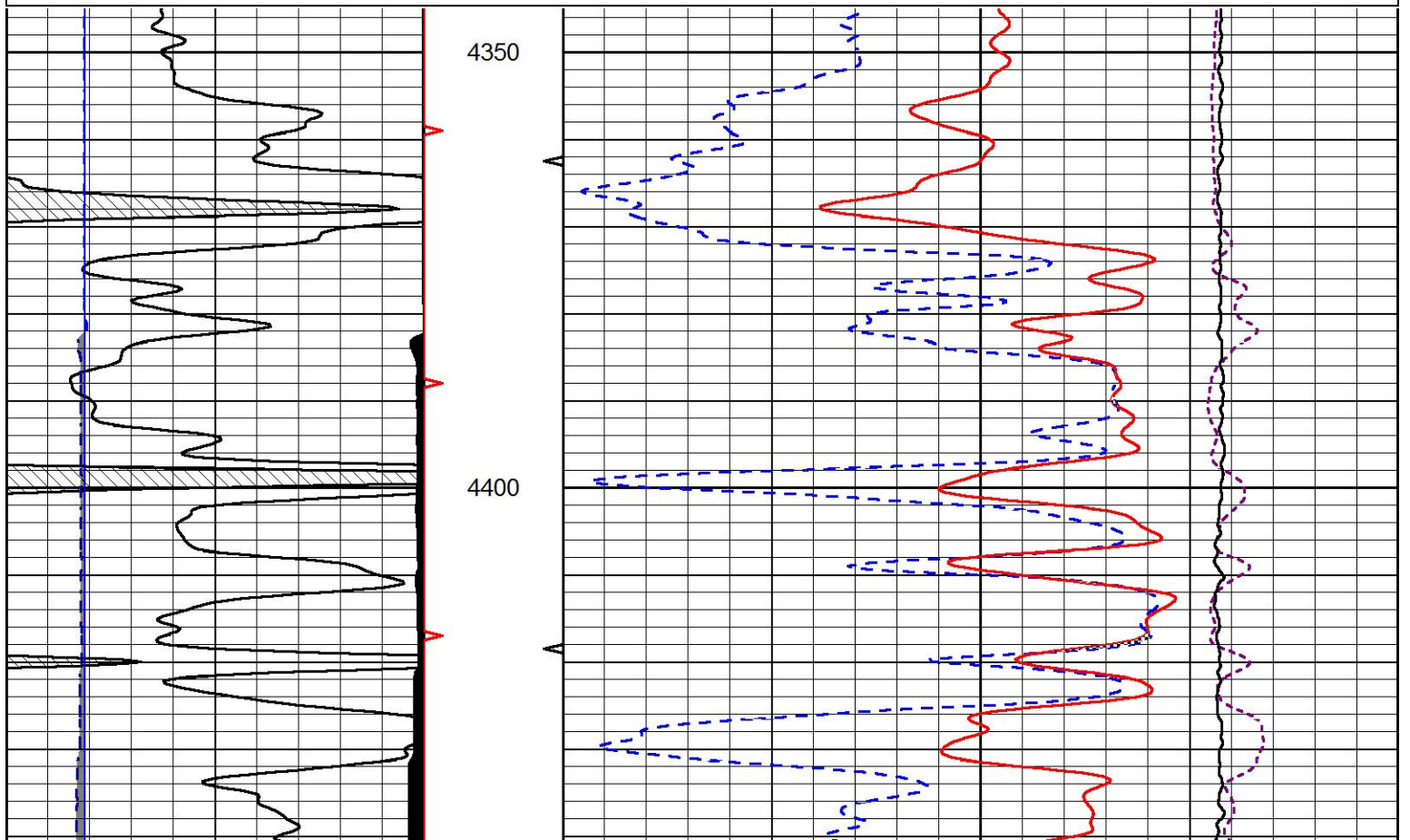
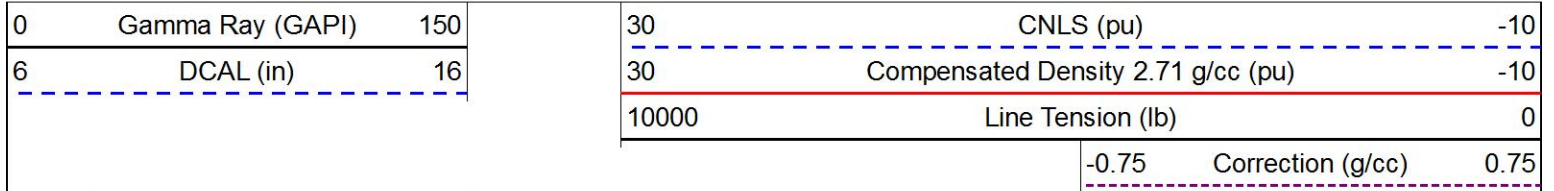


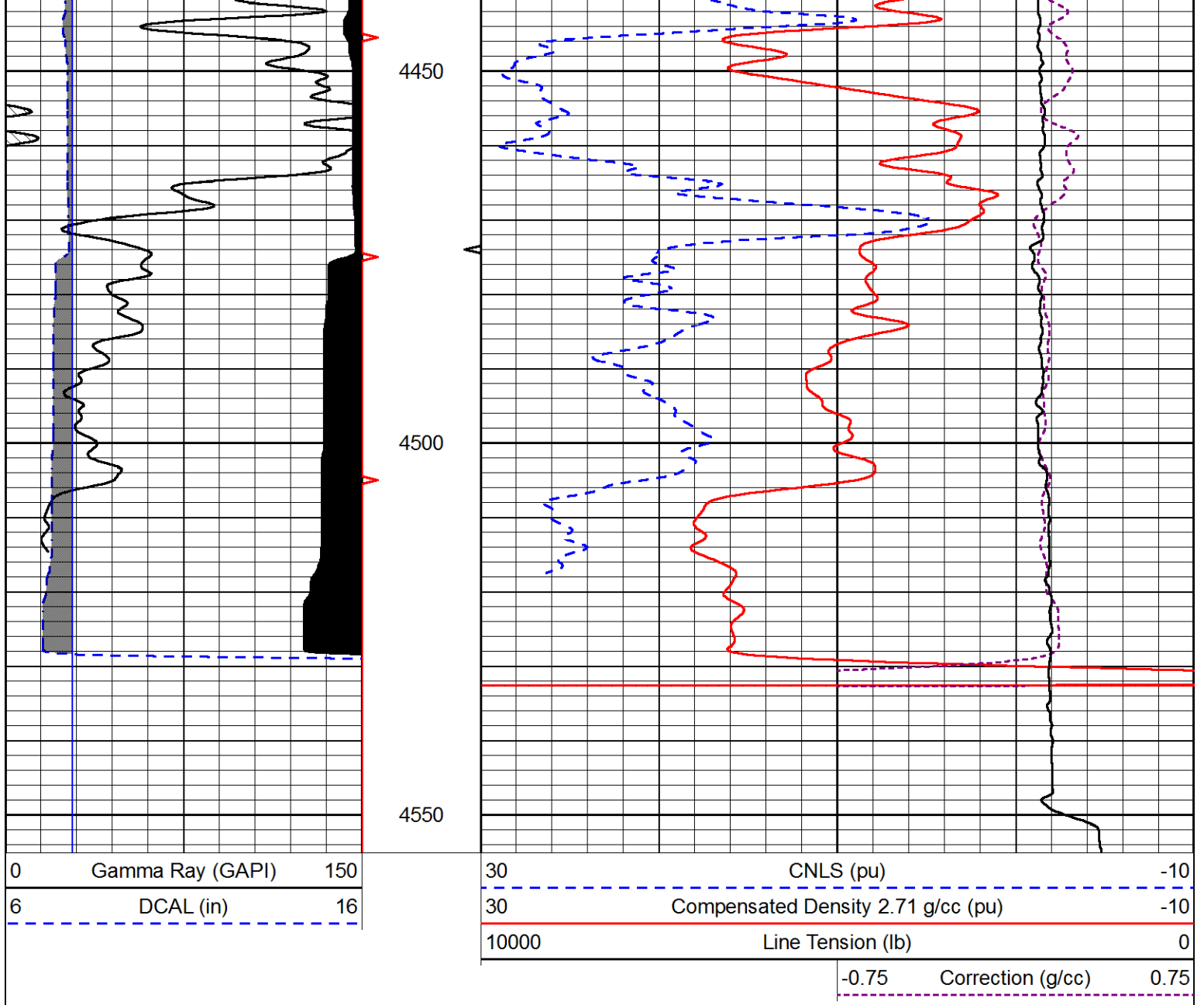




# REPEAT SECTION

Database File      brito\_polifka 1-10.db  
 Dataset Pathname    STKML/pass2.1  
 Presentation Format    cndlspec  
 Dataset Creation      Wed Oct 25 01:10:58 2017  
 Charted by            Depth in Feet scaled 1:240





### Calibration Report

Database File      brito\_polifka 1-10.db  
 Dataset Pathname    STKML/pass3.1  
 Dataset Creation    Wed Oct 25 01:11:34 2017

### Dual Induction Calibration Report

Serial-Model:                      PSI 91-M&W  
 Calibration Performed:            Wed Sep 13 22:23:16 2017

Loop:	Readings		References			Results	
	Air	Loop	Air	Loop	mmho/m	Gain	Offset
Deep	166.796	835.089	0.000	255.800	mmho/m	0.430	-36.000
Medium	142.009	1348.560	0.000	255.800	mmho/m	0.360	-31.000

### Microlog Calibration Report

Serial-Model:                      PSI-01-PSIML  
 Performed:                         Wed Sep 06 19:50:56 2017

	Readings		References			Results	
	Zero	Cal	Zero	Cal		m	b
Normal	0.0000	1.0000	0.0000	1.0000	Ohm-m	32000.0000	-2.1000
Inverse	0.0000	1.0000	0.0000	1.0000	Ohm-m	47000.0000	-2.3000
Caliper	1.0001	1.1397	6.5000	18.5000	in	100.0000	-97.3000

**Compensated Density Calibration Report**

Serial-Model: 90-1031-M&W  
 Source / Verifier: 16955B / 2ci  
 Master Calibration Performed: Wed Sep 06 19:51:03 2017

**Master Calibration**

	Density		Far Detector	Near Detector	
Magnesium	1.755	g/cc	4903.44	6153.79	cps
Aluminum	2.640	g/cc	934.50	4021.31	cps
Spine Angle = 75.61			Density/Spine Ratio = 0.517		
	Size		Reading		
Small Ring	8.00	in	1.84		
Large Ring	22.00	in	1.46		

**Compensated Neutron Calibration Report**

Serial Number: 207-MW  
 Tool Model: M&W  
 Calibration Performed: WED SEP 6 10:30:30 2017

Detector	Readings	Target	Normalization
Short Space	6240.00 cps	1000.00 cps	1.6025
Long Space	460.00 cps	1000.00 cps	1.9500

**Gamma Ray Calibration Report**

Serial Number: 89  
 Tool Model: M&W  
 Calibration Performed: Wed Sep 06 19:51:14 2017

Calibrator Value: 1.0 GAPI

Background Reading: 0.0 cps  
 Calibrator Reading: 1.0 cps

Sensitivity: 0.6000 GAPI/cps



Company BRITO OIL COMPANY, INC.  
 Well POLIFKA #1-10  
 Field WILDCAT  
 County GOVE  
 State KANSAS