



# MICRORESISTIVITY LOG

**Company** BRITO OIL COMPANY, INC.  
**Well** POLIFKA #1-10  
**Field** WILDCAT  
**County** GOVE  
**State** KANSAS

**Company** BRITO OIL COMPANY, INC.  
**Well** POLIFKA #1-10  
**Field** WILDCAT  
**County** GOVE  
**State** KANSAS

**Location:** API #: 15-063-22315-00-00  
 2310' FSL & 2285' FEL  
 SEC 31 TWP 12S RGE 26W  
**Permanent Datum** GROUND LEVEL Elevation 2627'  
**Log Measured From** KELLY BUSHING  
**Drilling Measured From** KELLY BUSHING  
**Other Services** CNL/CDL DIL  
**Elevation** K.B. 2637', D.F. N/A, G.L. 2627'

Date	10/24/2017
Run Number	ONE
Depth Driller	4550'
Depth Logger	4550'
Bottom Logged Interval	4549'
Top Log Interval	3600'
Casing Driller	8.625" @ 225'
Casing Logger	219'
Bit Size	7.875"
Type Fluid in Hole	CHEMICAL
Salinity, ppm CL	4100
Density / Viscosity	9.3 59
pH / Fluid Loss	10.5 8.0
Source of Sample	FLOWLINE
Rm @ Meas. Temp	0.60 @ 50
Rmt @ Meas. Temp	0.45 @ 50
Rmc @ Meas. Temp	0.81 @ 50
Source of Rmf / Rmc	CHARTS
Rm @ BHT	0.25 @ 122
Operating Rig Time	3 HOURS
Max Rec. Temp. F	122
Equipment Number	91
Location	HAYS
Recorded By	D. SCHMIDT
Witnessed By	ROBERT HENDRIX

<<< Fold Here >>>

All interpretations are opinions based on inferences from electrical or other measurements and Pioneer Wireline Services, LLC cannot and does not guarantee the accuracy or correctness of any interpretation, and Pioneer Wireline Services, LLC will not be liable or responsible for any loss, costs, damages, or expenses incurred or sustained by anyone resulting from any interpretation made by any of our officers, agents or employees.

**Comments**

N/A DENOTES NOT AVAILABLE OR NON-APPLICABLE.

QUINTER,  
6 SOUTH, 1/2 WEST,  
SOUTH INTO

Log Measured From: KELLY BUSHING 10 Ft. Above Permanent Datum

THANK YOU FOR USING PIONEER ENERGY SERVICES  
www.pioneerenergy.com 785-625-3858

<b>Your Pioneer Energy Services Crew</b> Engineer: D. SCHMIDT Operator: Operator: Operator:	<b>This Log Record Was Witnessed By</b> Primary Witness: ROBERT HENDRIX Secondary Witness: Secondary Witness: Secondary Witness:
---	--

Top - Bottom

M	A	SZCOR	NPORSEL	FLUIDDEN g/cc	MATRXDEN g/cc	SPSHIFT mV	SNDERRM mmho/m
2	1	Off	Limestone	1	2.71	165	0
SNDERR mmho/m	SRFTEMP degF	CASETHCK in	CASEOD in	PERFS	TDEPTH ft	BOTTEMP degF	BOREID in
0	50	0	5.5	0	4550	122	7.875

Sensor	Offset (ft)	Schematic	Description	Length (ft)	O.D. (in)	Weight (lb)
GR	40.58		GR-M&W (89)	3.00	3.50	50.00
CNLSC	37.48		CNT-M&W (207-MW)	5.50	3.50	100.00
CNSSC	36.73					
LSD	28.43		CDL-M&W (90-1031)	8.50	4.00	250.00
DCAL	28.42					
SSD	27.93					
MCAL	19.83		ML-PSIML (PSI-01) GO Micro log tools converted to Simplec electronics	7.58	4.00	65.00
MI	19.83					
MN	19.83					
RLL3F	15.80		RLL3	15.80		
RLL3	15.80					

CILD	8.00		DIL-M&W (PSI 91)	18.50	3.50	220.00
CILM	4.70					
SP	0.20					

Dataset: brito\_polifka 1-10.db: field/well/STKML/pass3.1  
 Total length: 43.08 ft  
 Total weight: 685.00 lb  
 O.D.: 4.00 in

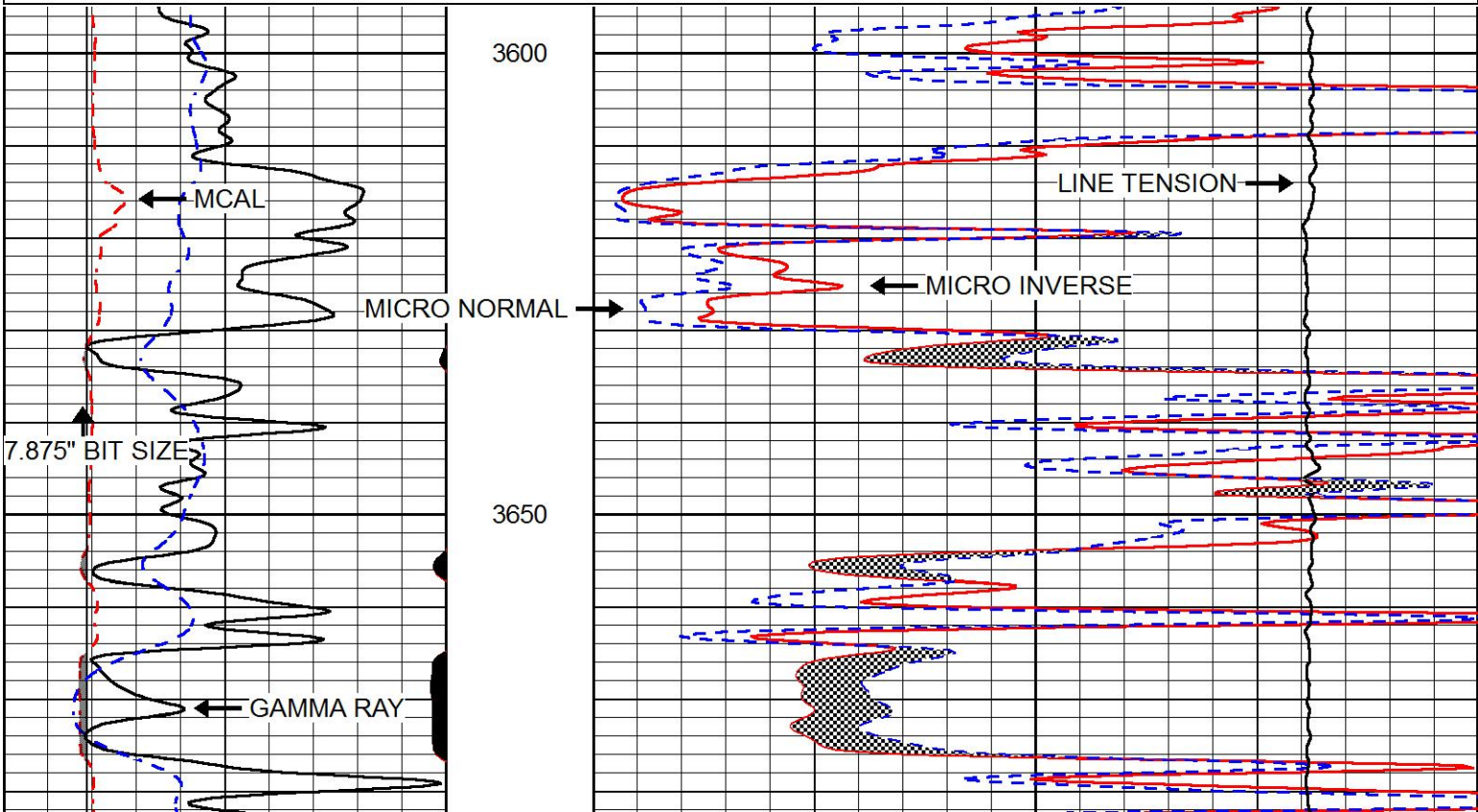


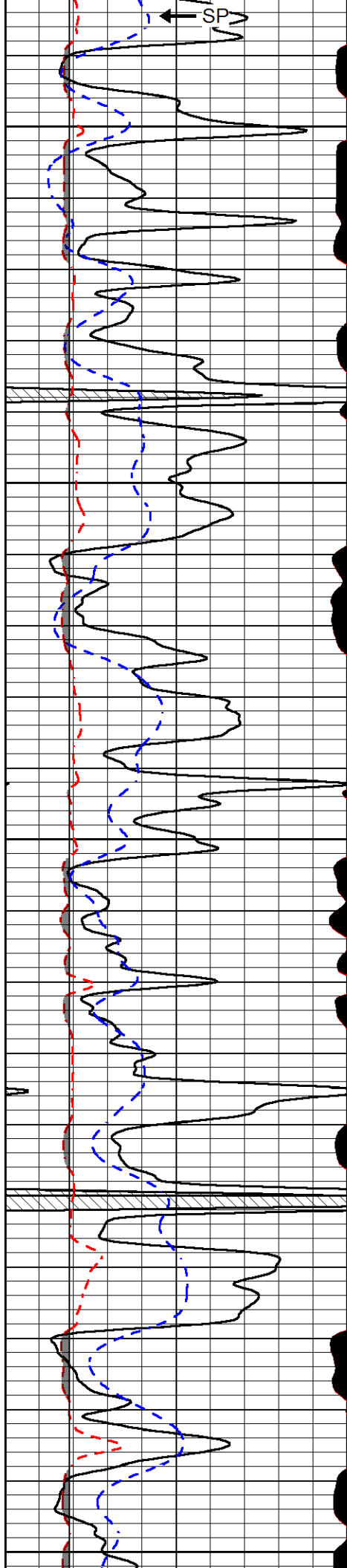
# MAIN PASS

Database File	brito_polifka 1-10.db
Dataset Pathname	STKML/pass3.1
Presentation Format	micro
Dataset Creation	Wed Oct 25 01:11:34 2017
Charted by	Depth in Feet scaled 1:240

0	Gamma Ray (GAPI)	150
6	MCAL (in)	16
2.875	mcals (in)	7.875
6	Bit Size (in)	16
-200	SP (mV)	0

0	Micro Inverse 1 X 1 (Ohm-m)	40
0	Micro Normal 2" (Ohm-m)	40
10000	Line Weight (lb)	0





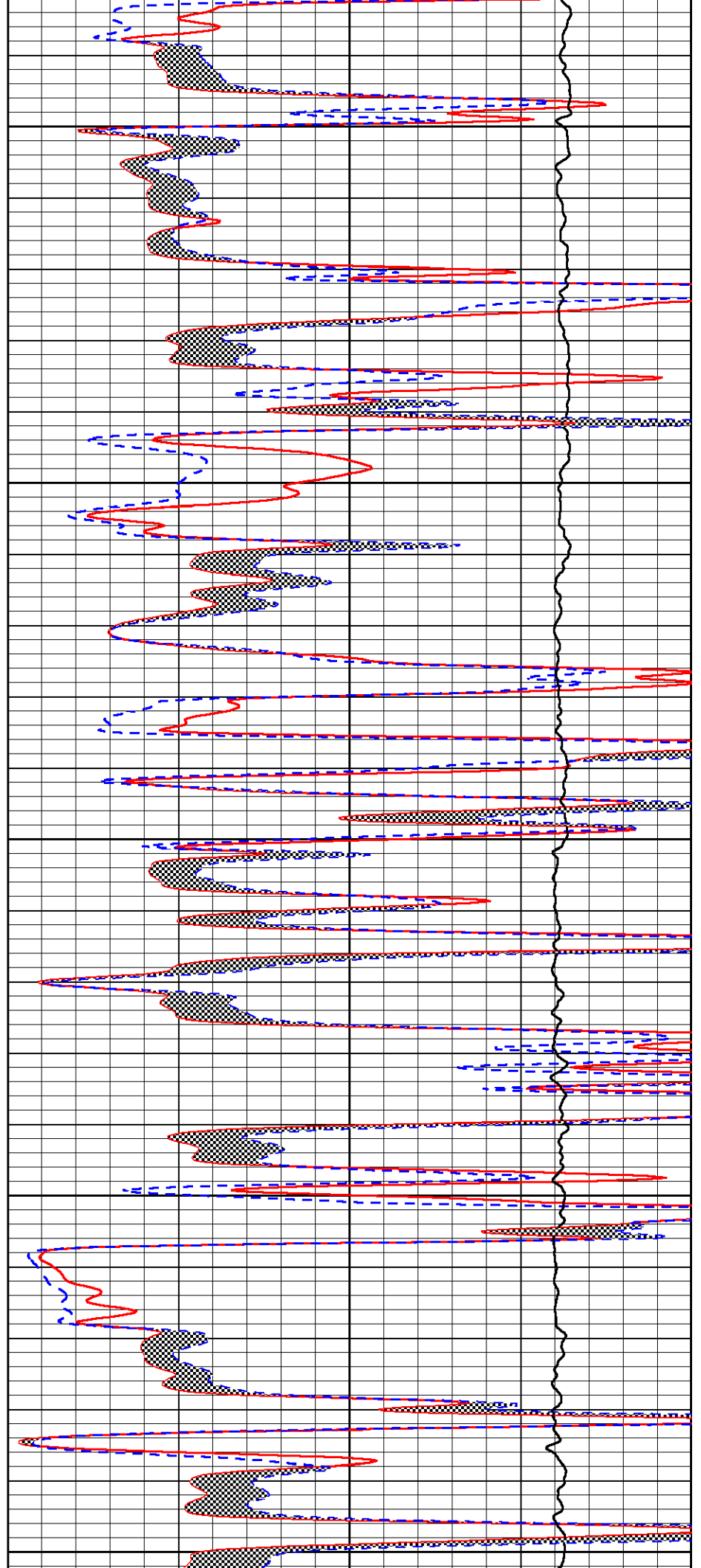
3700

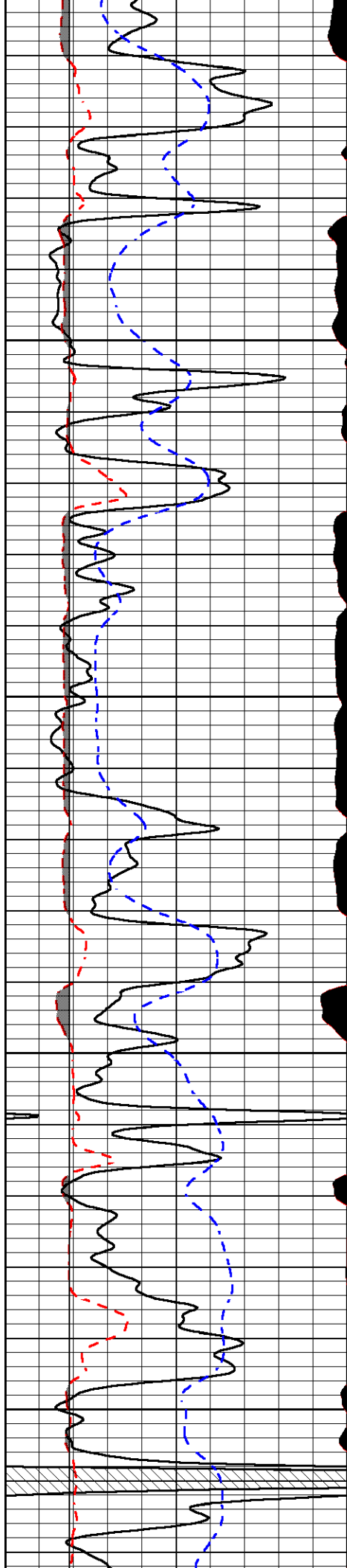
3750

3800

3850

3900



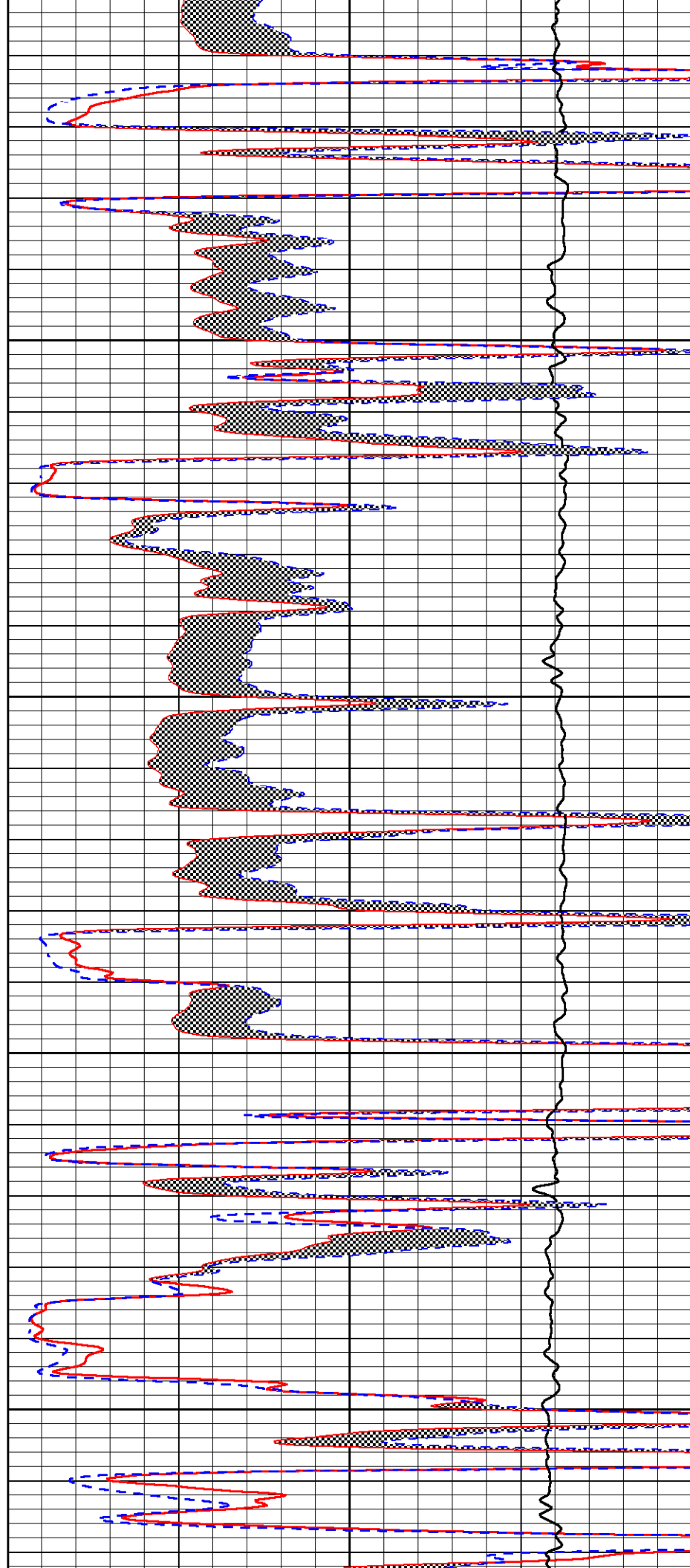


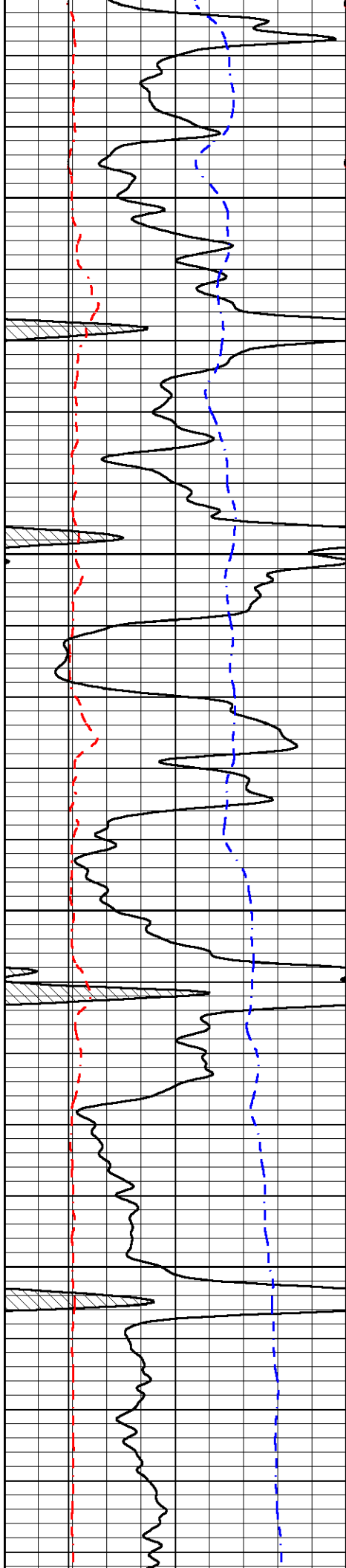
3950

4000

4050

4100



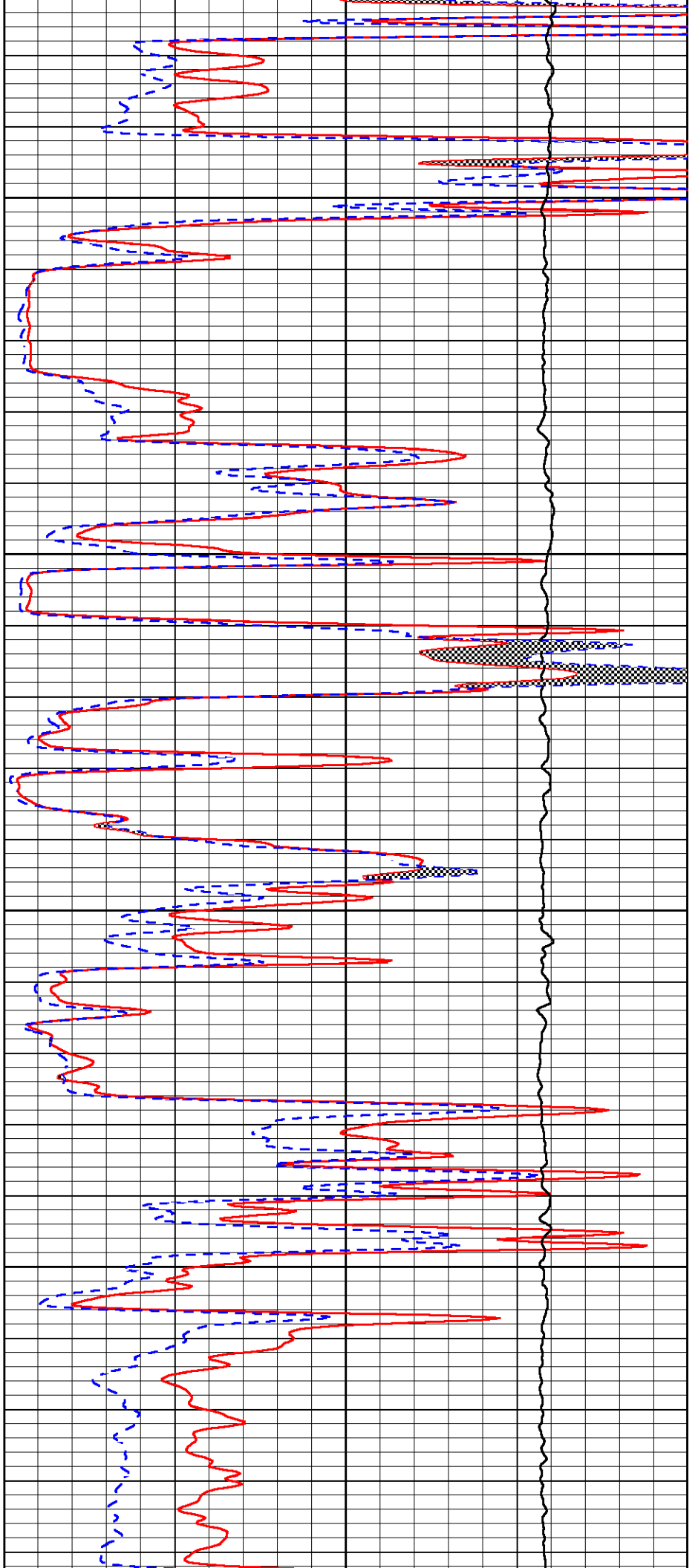


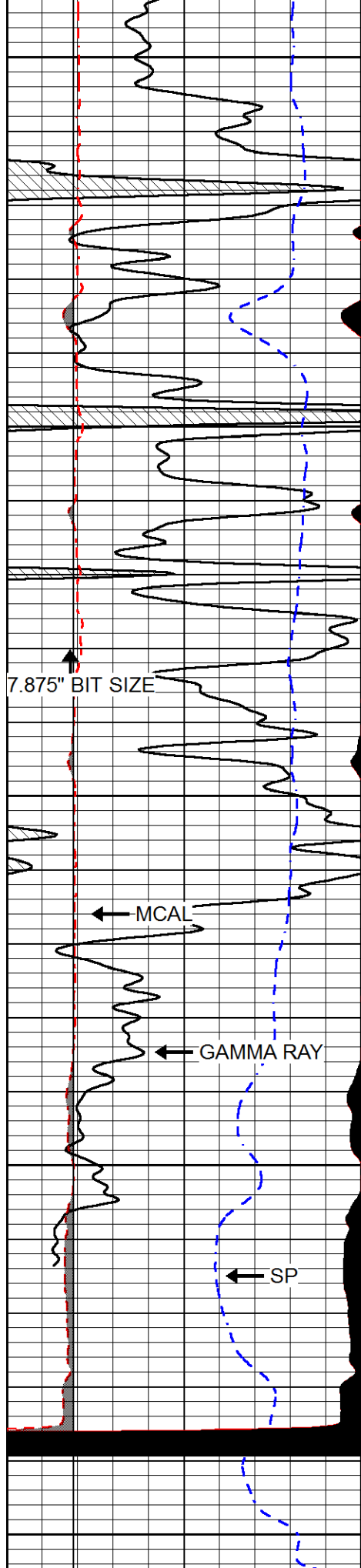
4150

4200

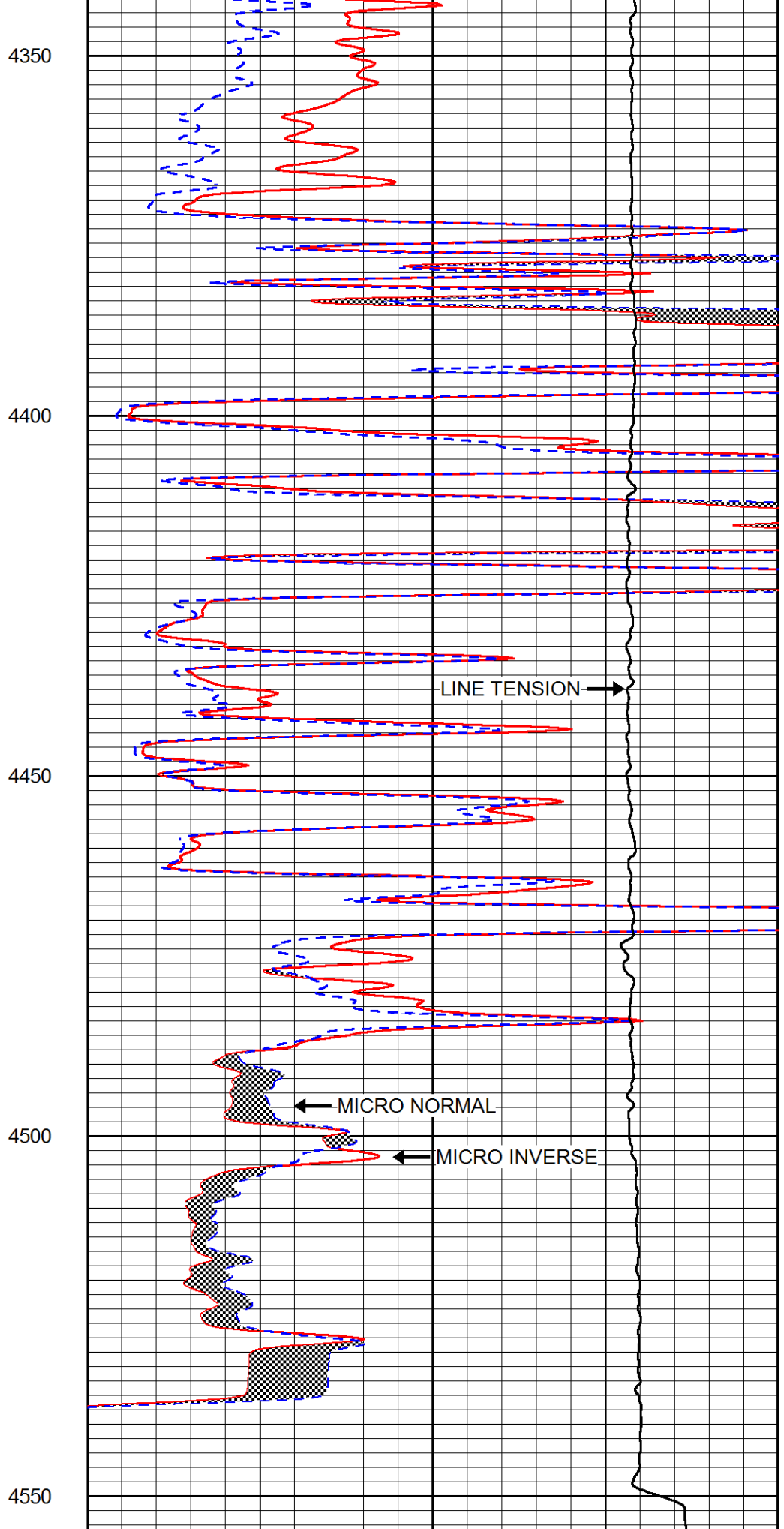
4250

4300





0	Gamma Ray (GAPI)	150
6	MCAL (in)	16



0	Micro Inverse 1 X 1 (Ohm-m)	40
0	Micro Normal 2" (Ohm-m)	40

0	MCAL (in)	10
2.875	mcal (in)	7.875
6	Bit Size (in)	16
-200	SP (mV)	0

0	Micro Normal 2" (Ohm-m)	40
10000	Line Weight (lb)	0

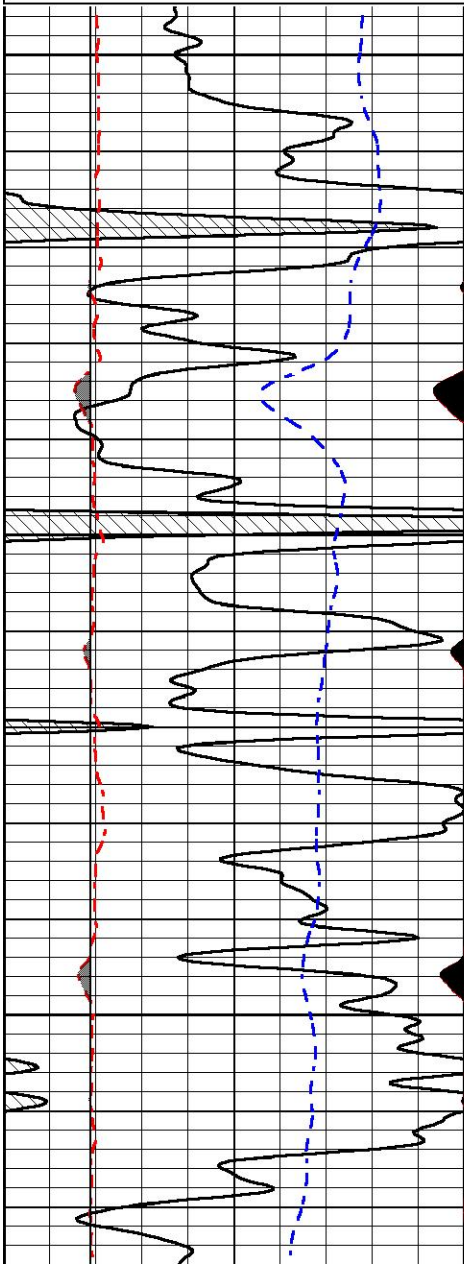


# REPEAT SECTION

Database File      brito\_polifka 1-10.db  
 Dataset Pathname    STKML/pass2.1  
 Presentation Format    micro  
 Dataset Creation      Wed Oct 25 01:10:58 2017  
 Charted by            Depth in Feet scaled 1:240

0	Gamma Ray (GAPI)	150
6	MCAL (in)	16
2.875	mcal (in)	7.875
6	Bit Size (in)	16
-200	SP (mV)	0

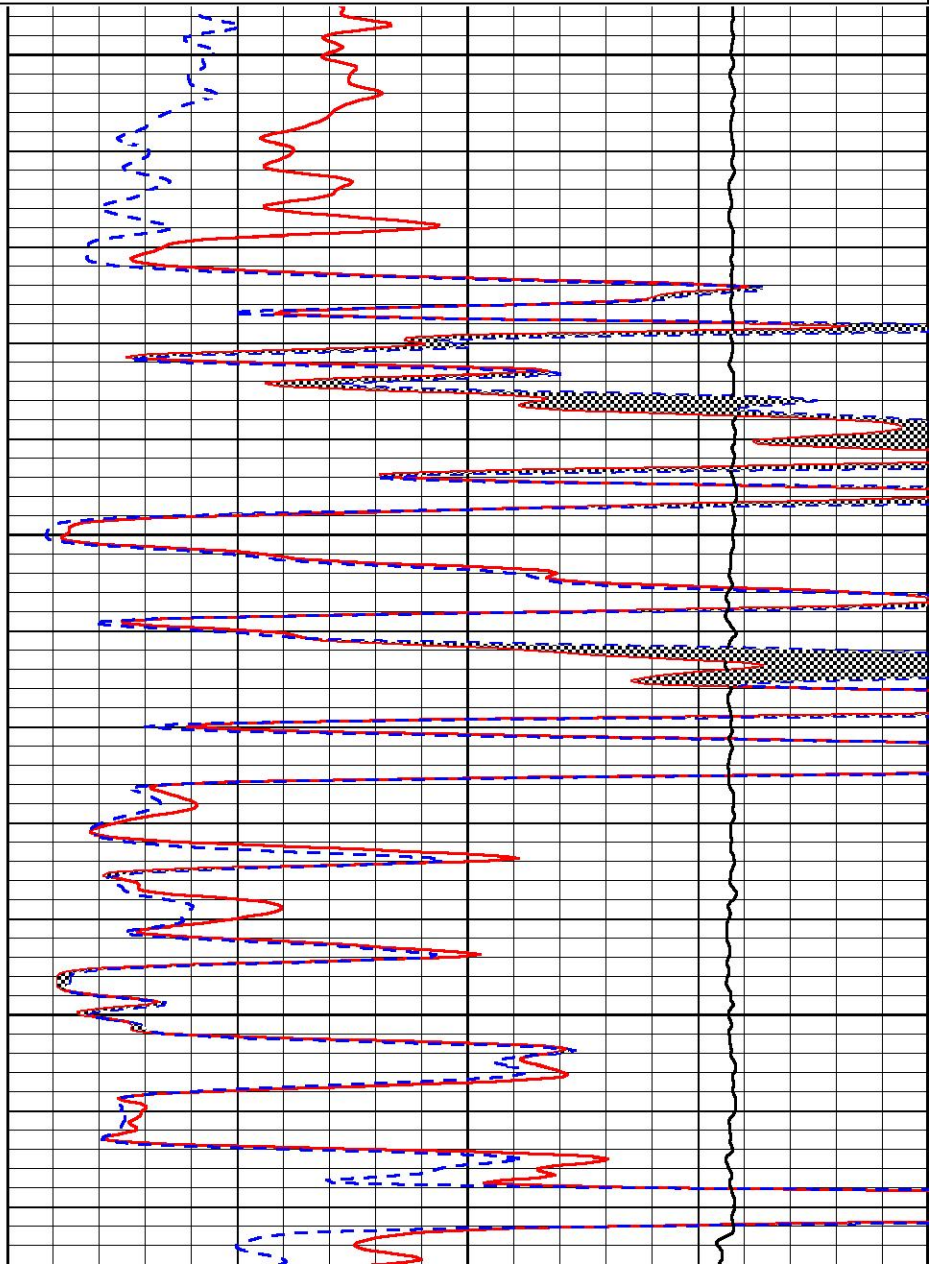
0	Micro Inverse 1 X 1 (Ohm-m)	40
0	Micro Normal 2" (Ohm-m)	40
10000	Line Weight (lb)	0

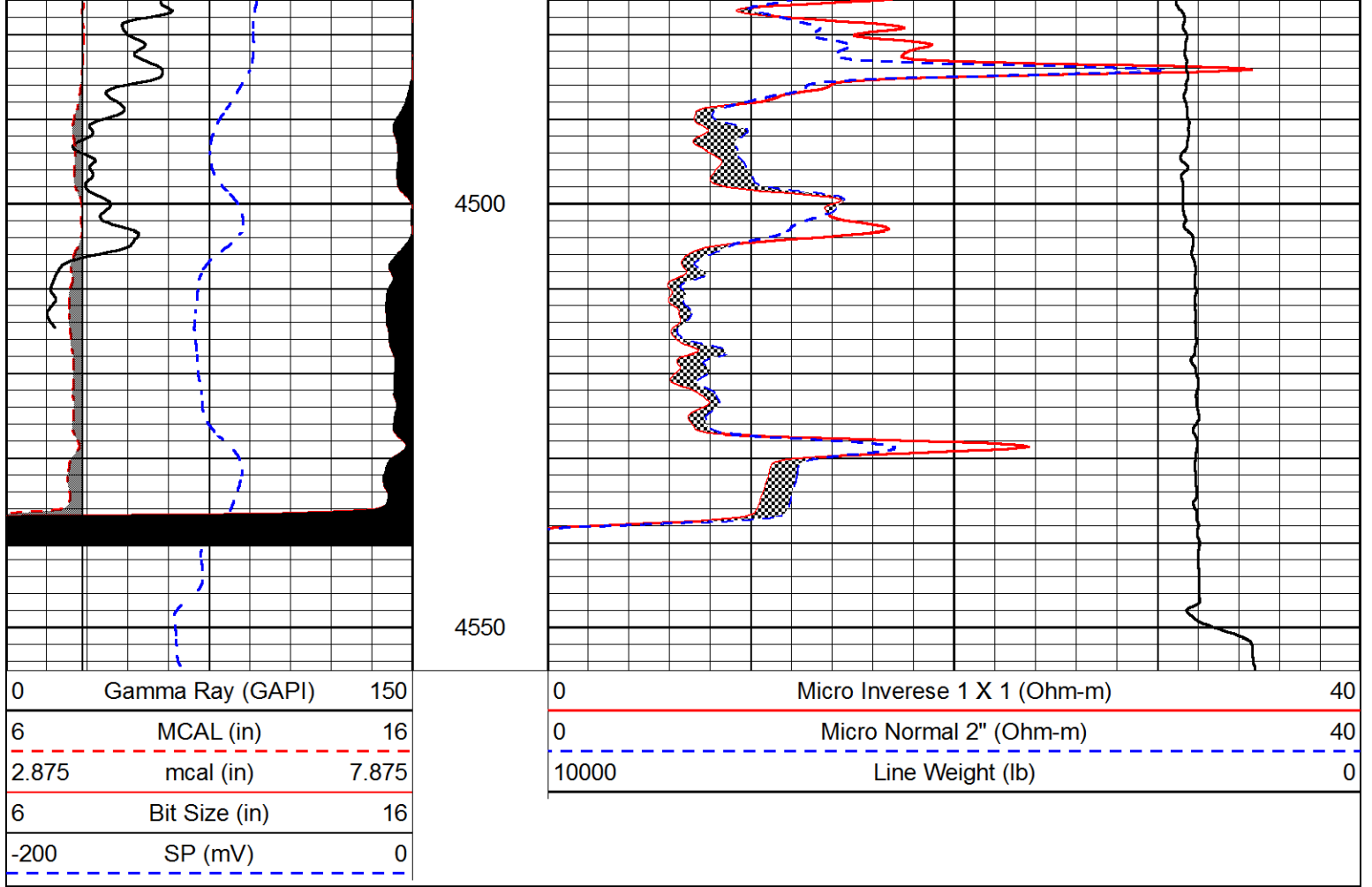


4350

4400

4450





### Calibration Report

Database File      brito\_polifka 1-10.db  
 Dataset Pathname    STKML/pass3.1  
 Dataset Creation    Wed Oct 25 01:11:34 2017

### Dual Induction Calibration Report

Serial-Model:                      PSI 91-M&W  
 Calibration Performed:            Wed Sep 13 22:23:16 2017

Loop:	Readings		References			Results	
	Air	Loop	Air	Loop		Gain	Offset
Deep	166.796	835.089	0.000	255.800	mmho/m	0.430	-36.000
Medium	142.009	1348.560	0.000	255.800	mmho/m	0.360	-31.000

### Microlog Calibration Report

Serial-Model:                      PSI-01-PSIML  
 Performed:                         Wed Sep 06 19:50:56 2017

	Readings		References			Results	
	Zero	Cal	Zero	Cal		m	b
Normal	0.0000	1.0000	0.0000	1.0000	Ohm-m	32000.0000	-2.1000
Inverse	0.0000	1.0000	0.0000	1.0000	Ohm-m	47000.0000	-2.3000
Caliper	1.0001	1.1397	6.5000	18.5000	in	100.0000	-97.3000

Serial-Model: 90-1031-M&W  
 Source / Verifier: 16955B / 2ci  
 Master Calibration Performed: Wed Sep 06 19:51:03 2017

## Master Calibration

	Density		Far Detector	Near Detector	
Magnesium	1.755	g/cc	4903.44	6153.79	cps
Aluminum	2.640	g/cc	934.50	4021.31	cps
Spine Angle = 75.61			Density/Spine Ratio = 0.517		
	Size		Reading		
Small Ring	8.00	in	1.84		
Large Ring	22.00	in	1.46		

## Compensated Neutron Calibration Report

Serial Number: 207-MW  
 Tool Model: M&W  
 Calibration Performed: WED SEP 6 10:30:30 2017

Detector	Readings	Target	Normalization
Short Space	6240.00 cps	1000.00 cps	1.6025
Long Space	460.00 cps	1000.00 cps	1.9500

## Gamma Ray Calibration Report

Serial Number: 89  
 Tool Model: M&W  
 Calibration Performed: Wed Sep 06 19:51:14 2017

Calibrator Value: 1.0 GAPI

Background Reading: 0.0 cps  
 Calibrator Reading: 1.0 cps

Sensitivity: 0.6000 GAPI/cps



Company BRITO OIL COMPANY, INC.  
 Well POLIFKA #1-10  
 Field WILDCAT  
 County GOVE  
 State KANSAS