



**COMPENSATED  
DENSITY/NEUTRON  
LOG**

Company	SOUTHWIND PETROLEUM CORP.	Company	SOUTHWIND PETROLEUM CORP.
Well	CDK HOLDINGS LLC #16-1	Well	CDK HOLDINGS LLC #16-1
Field	DILLWIN	Field	DILLWIN
County	STAFFORD	County	STAFFORD
State	KANSAS	State	KANSAS
Location:	API # : 15-185-24064-0000	Other Services	DILMEL
	1615' FSL & 1025' FWL		
	SEC 16 TWP 24S RGE 14W		
Permanent Datum	GROUND LEVEL	Elevation	1976
Log Measured From	KELLY BUSHING	K.B.	1989
Drilling Measured From	KELLY BUSHING	D.F.	1987
		G.L.	1976

Date	1/05/20
Run Number	ONE
Depth Driller	4280
Depth Logger	4276
Bottom Logged Interval	4256
Top Log Interval	3200
Casing Driller	8 5/8" @ 433
Casing Logger	433
Bit Size	7 7/8"
Type Fluid in Hole	CHEMICAL MUD
Density / Viscosity	9.5/56
pH / Fluid Loss	9.0/10.4
Source of Sample	FLOWLINE
Rm @ Meas. Temp	.60 @ 62F
Rmt @ Meas. Temp	.45 @ 62F
Rmc @ Meas. Temp	.72 @ 62F
Source of Rmf / Rmc	MEASURED
Rm @ BHT	.31 @ 119F
Time Circulation Stopped	2 HOURS
Time Logger on Bottom	///
Maximum Recorded Temperature	119F
Equipment Number	1523
Location	HAYS, KANSAS
Recorded By	GUS PFANENSTIEL
Witnessed By	BOB WILLIAMS

<<< Fold Here >>>

All interpretations are opinions based on inferences from electrical or other measurements and we cannot and do not guarantee the accuracy or correctness of any interpretation, and we shall not, except in the case of gross or willful negligence on our part, be liable or responsible for any loss, costs, damages, or expenses incurred or sustained by anyone resulting from any interpretation made by any of our officers, agents or employees. These interpretations are also subject to our general terms and conditions set out in our current Price Schedule.

**Comments**

THANK YOU FOR USING ELI WIRELINE, HAYS, KS. (785) 628-6395

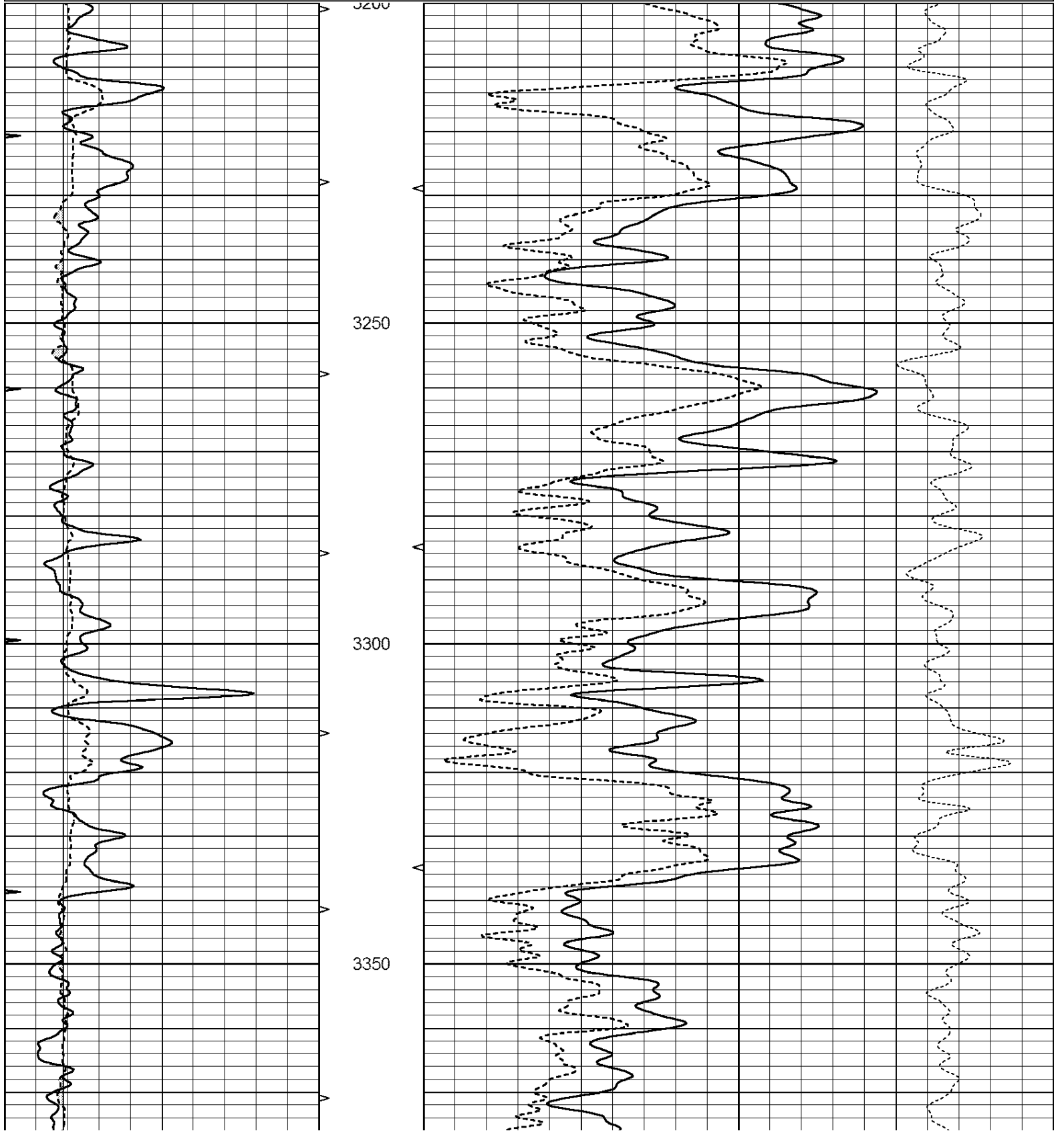
DIRECTIONS: 281 AND HWY 50, WEST 7 MILES ,1/2 NORTH,  
EAST INTO.

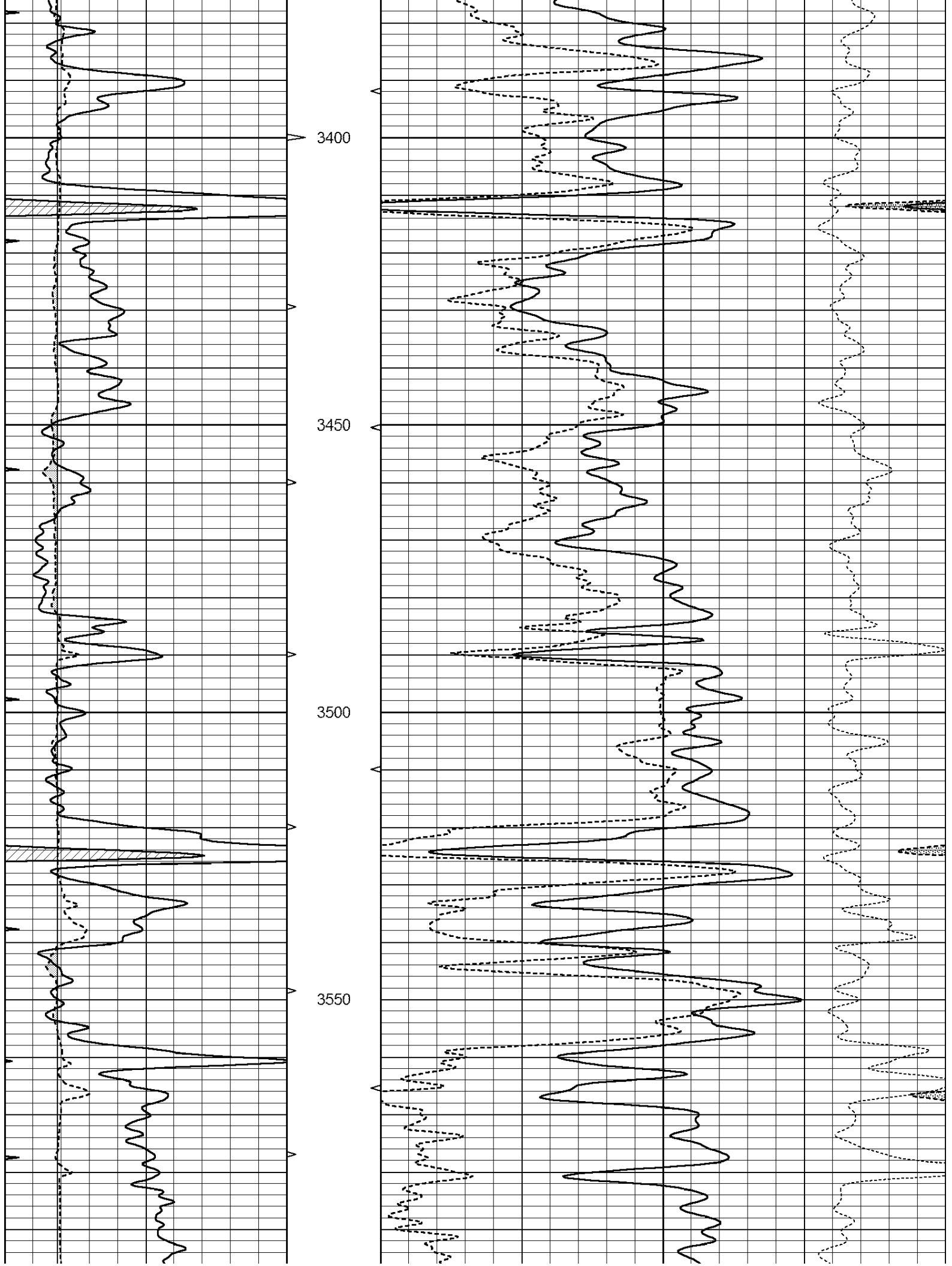


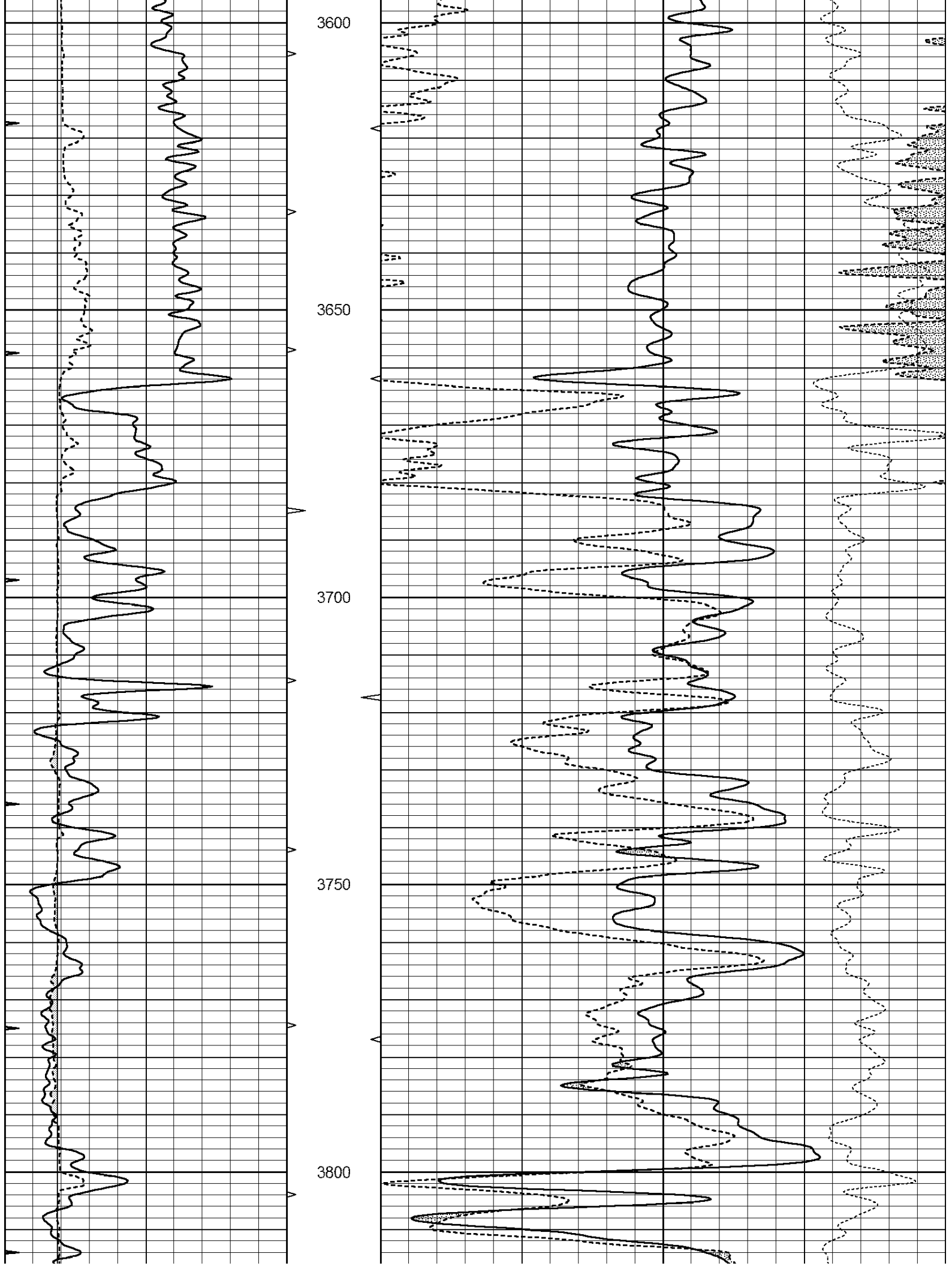
**MAIN PASS**

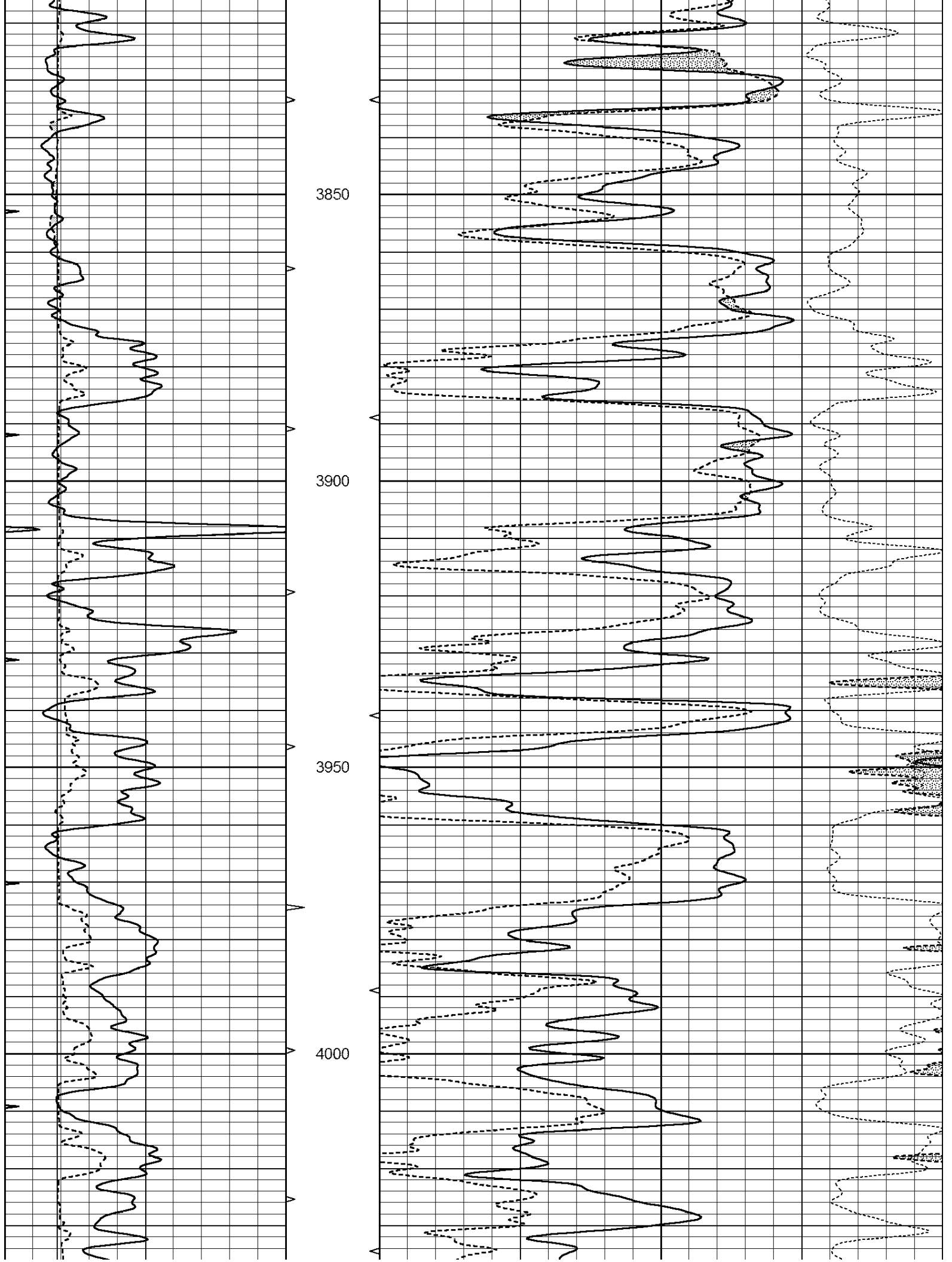
Database File: 4471ddn.db  
 Dataset Pathname: pass3POR  
 Presentation Format: den\_neu  
 Dataset Creation: Sun Jan 05 04:55:12 2020  
 Charted by: Depth in Feet scaled 1:240

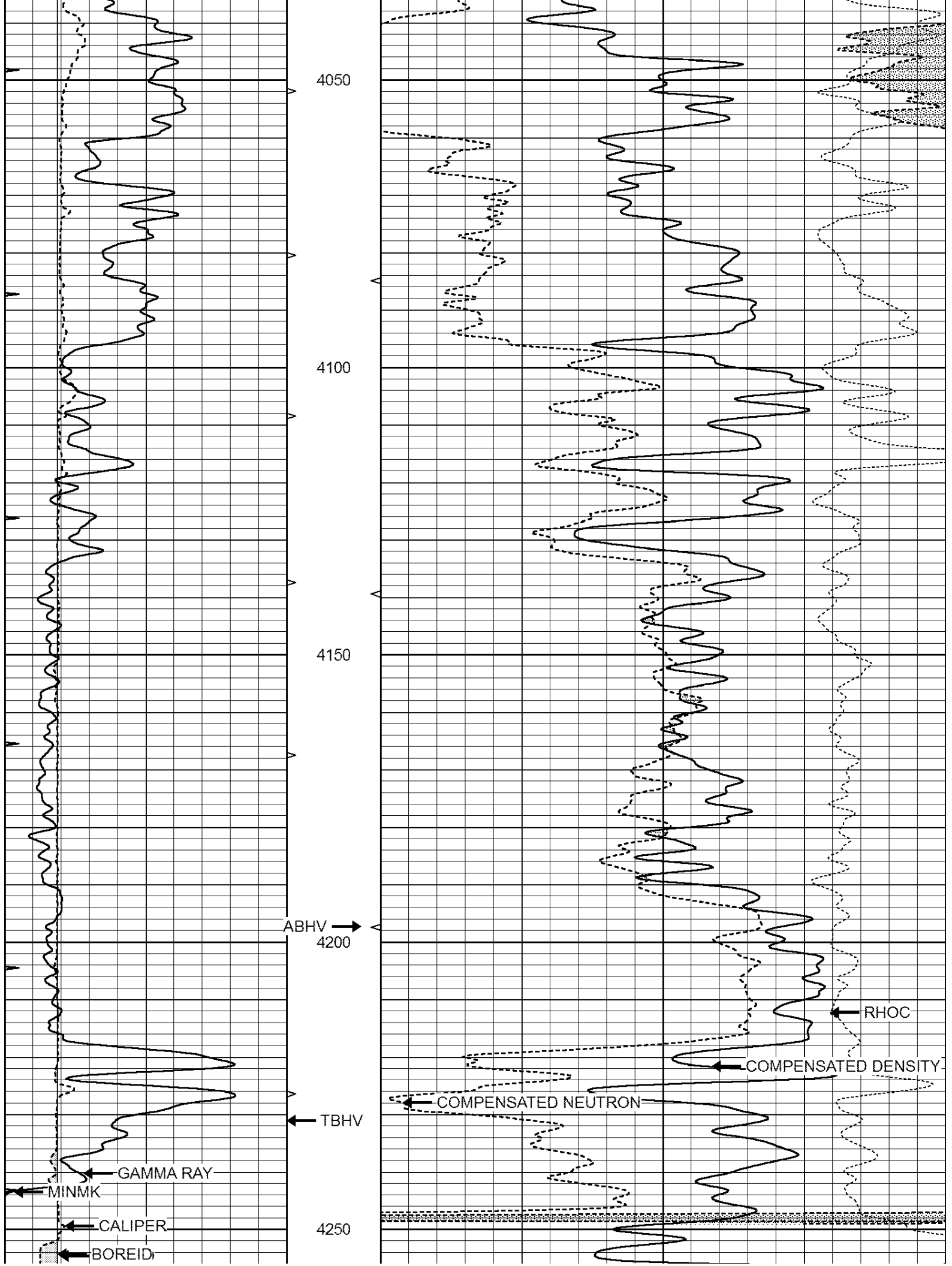
0	GAMMA RAY (GAPI)	150	ABHV	30	COMPENSATED DENSITY (pu)	-10
6	CALIPER (in)	16	10 (ft3)	0 30	COMPENSATED NEUTRON (pu)	-10
0	MINMK	20	TBHV		-0.25 CORRECTION (g/cc)	0.25
			0 (ft3)	10		



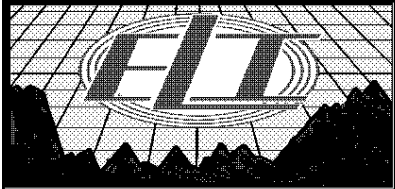








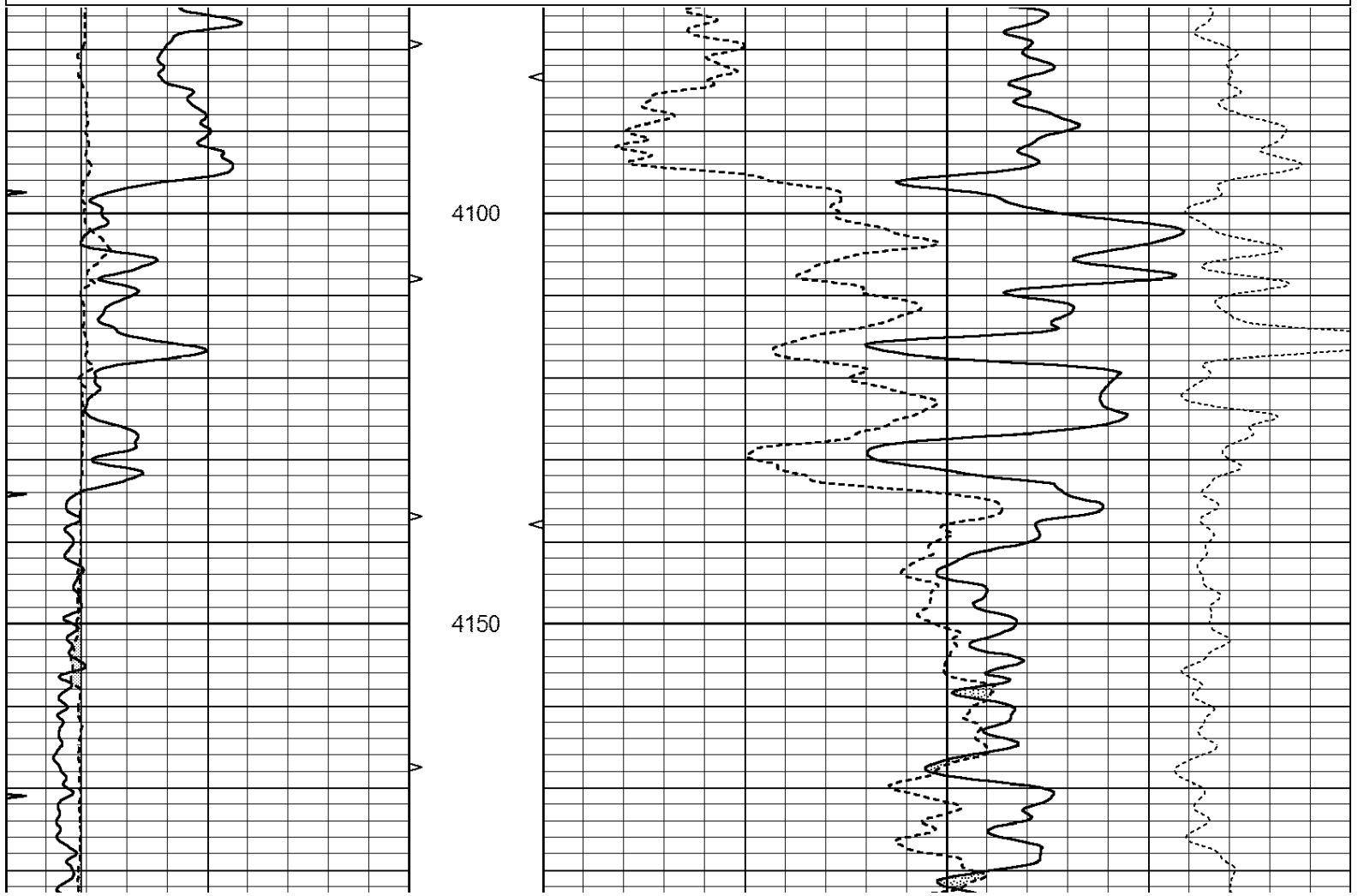
				LIMESTONE MATRIX 2.71	
		LTD 4276			
0	GAMMA RAY (GAPI)	150	ABHV	30	COMPENSATED DENSITY (pu) -10
6	CALIPER (in)	16	10 (ft3)	0 30	COMPENSATED NEUTRON (pu) -10
0	MINMK	20	TBHV		-0.25 CORRECTION (g/cc) 0.25
			0 (ft3)	10	

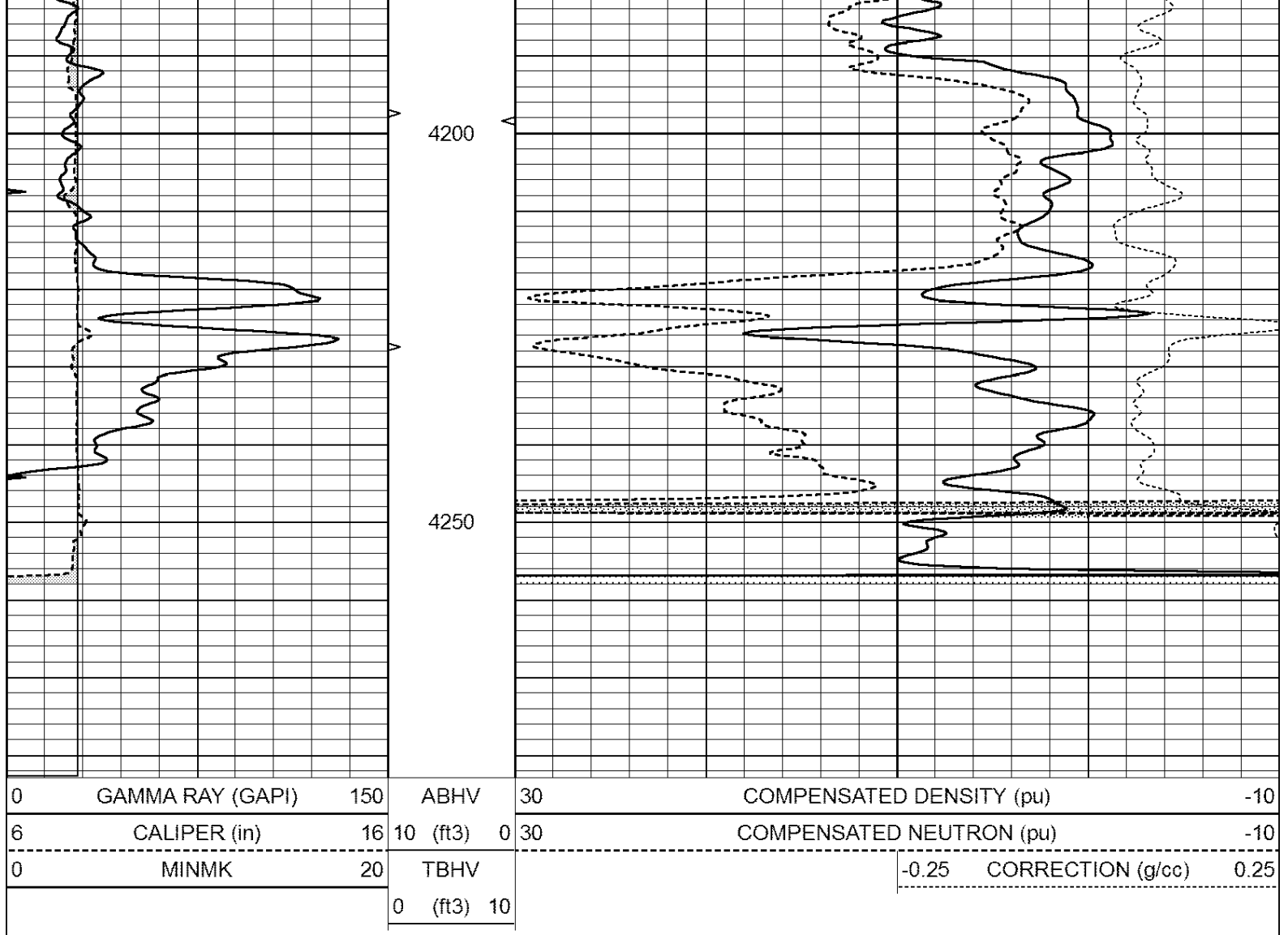


# REPEAT SECTION

Database File: 4471ddn.db  
 Dataset Pathname: pass2RP  
 Presentation Format: den\_neu  
 Dataset Creation: Sun Jan 05 04:49:41 2020  
 Charted by: Depth in Feet scaled 1:240

0	GAMMA RAY (GAPI)	150	ABHV	30	COMPENSATED DENSITY (pu) -10
6	CALIPER (in)	16	10 (ft3)	0 30	COMPENSATED NEUTRON (pu) -10
0	MINMK	20	TBHV		-0.25 CORRECTION (g/cc) 0.25
			0 (ft3)	10	





### Calibration Report

Database File: 4471ddn.db  
 Dataset Pathname: pass2RP  
 Dataset Creation: Sun Jan 05 04:49:41 2020

### Dual Induction Calibration Report

Serial-Model: PROBE8-DILG  
 Surface Cal Performed: Mon Sep 10 14:28:35 2018  
 Downhole Cal Performed: Mon Sep 10 14:28:38 2018  
 After Survey Verification Performed: Mon Sep 10 14:28:40 2018

#### Surface Calibration

Loop:	Readings			V	References		Results	
	Air	Loop			Air	Loop	m	b
Deep	0.015	0.648		0.000	400.000	mmho/m	620.000	0.000
Medium	0.029	0.796		0.000	464.000	mmho/m	590.000	-12.000
Internal:	Zero	Cal		Zero	Cal		m	b
Deep	0.017	0.657		0.000	400.000	mmho/m	625.153	-10.619
Medium	0.016	0.757		0.000	464.000	mmho/m	625.992	-9.739

#### Downhole Calibration

Readings		References		Results	
Zero	Cal	Zero	Cal	m'	b'

Deep	0.000	0.000	mmho/m	2.011	405.777	mmho/m	1.000	0.000
Medium	0.000	0.000	mmho/m	7.590	503.393	mmho/m	1.000	0.000
LL3		7.500	V		1500.000	Ohm-m		
		0.000	V		20.000	Ohm-m		
		-7.200	V		3800.000	mmho-m		

After Survey Verification								
	Readings			Targets			Results	
	Zero	Cal		Zero	Cal		m'	b'
Deep	0.000	0.000	mmho/m	0.000	0.000	mmho/m	0.000	0.000
Medium	0.000	0.000	mmho/m	0.000	0.000	mmho/m	0.000	0.000
LL3		1.000	Ohm-m		1.000	Ohm-m		
		0.000	Ohm-m		0.000	Ohm-m		
		1.000	mmho-m		1.000	mmho-m		

Litho Density Calibration Report  
Serial: 001N    Model: PRB

Master Calibration		Performed Fri Feb 22 10:21:38 2019						
	Background	Magnesium	Aluminum	Sandstone				
Window 1	1650.2	7609.7	2906.5	8386.5				cps
Window 2	1538.2	6635.9	2614.4	7212.4				cps
Window 3	1257.0	3718.7	1765.8	3927.1				cps
Window 4	376.8	375.6	373.4	374.5				cps
Long Space	0.0	5097.7	1076.2	5674.2				cps
Short Space	2.8	1704.3	1106.3	1723.6				cps
Rho		1.7100	2.5900	1.3800				g/cc
Pe		0.0000	2.5700	1.5500				
Rib Angle	: 44.5	Rib Slope	: 0.982	Density/Spine Ratio				: 0.545
Spine Angle	: 74.5	Spine Slope	: 3.599	Spine Intercept				: -18.2

Before Survey Verification		Performed Wed Dec 31 18:00:00 1969						
	Background	Magnesium	Aluminum	Sandstone				
Window 1	0.0	0.0	0.0	0.0				cps
Window 2	0.0	0.0	0.0	0.0				cps
Window 3	0.0	0.0	0.0	0.0				cps
Window 4	0.0	0.0	0.0	0.0				cps
Long Space	0.0	0.0	0.0	0.0				cps
Short Space	0.0	0.0	0.0	0.0				cps
Measured Rho		0.0000	0.0000	0.0000				g/cc
Measured Correction		0.0000	0.0000	0.0000				g/cc
Measured Pe			0.0000	0.0000				

After Survey Verification		Performed Wed Dec 31 18:00:00 1969						
	Background	Magnesium	Aluminum	Sandstone				
Window 1	0.0	0.0	0.0	0.0				cps
Window 2	0.0	0.0	0.0	0.0				cps
Window 3	0.0	0.0	0.0	0.0				cps
Window 4	0.0	0.0	0.0	0.0				cps
Long Space	0.0	0.0	0.0	0.0				cps
Short Space	0.0	0.0	0.0	0.0				cps
Measured Rho		0.0000	0.0000	0.0000				g/cc
Measured Correction		0.0000	0.0000	0.0000				g/cc
Measured Pe			0.0000	0.0000				

Serial Number: 6I  
Tool Model: G

CALIBRATION

Detector	Readings	Target	Normalization
Short Space	1.00 cps	1.00 cps	1.0000
Long Space	1.00 cps	1.00 cps	1.0000

PRE-SURVEY VERIFICATION

	Detector	Readings	Measured	Target
1)	Short Space	cps		
	Long Space	cps	pu	pu
2)	Short Space	cps		
	Long Space	cps	pu	
3)	Short Space	cps		
	Long Space	cps	pu	

POST-SURVEY VERIFICATION

	Detector	Readings	Measured	Target
1)	Short Space	cps		
	Long Space	cps	pu	pu
2)	Short Space	cps		
	Long Space	cps	pu	pu
3)	Short Space	cps		
	Long Space	cps	pu	pu

Gamma Ray Calibration Report

Serial Number:	GR6
Tool Model:	OPEN
Performed:	Wed Jul 03 12:57:34 2019
Calibrator Value:	150.0 GAPI
Background Reading:	0.0 cps
Calibrator Reading:	276.0 cps
Sensitivity:	0.5700 GAPI/cps