



MICRO LOG

Company	SOUTHWIND PETROLEUM CORP.	Company	SOUTHWIND PETROLEUM CORP.
Well	CDK HOLDINGS LLC #16-1	Well	CDK HOLDINGS LLC #16-1
Field	DILLWIN	Field	DILLWIN
County	STAFFORD	County	STAFFORD
State	KANSAS	State	KANSAS
Location:	1615' FSL & 1025' FWL	API # :	15-185-24064-0000
Permanent Datum	GROUND LEVEL	Elevation	1976
Log Measured From	KELLY BUSHING	Elevation	K.B. 1989
Drilling Measured From	KELLY BUSHING	Elevation	D.F. 1987
		Elevation	G.L. 1976
	SEC 16 TWP 24S RGE 14W	Other Services	CDL/CNL/DIL

Date	1/05/20
Run Number	TWO
Depth Driller	4280
Depth Logger	4276
Bottom Logged Interval	4275
Top Log Interval	3200
Casing Driller	8 5/8" @ 433
Casing Logger	433
Bit Size	7 7/8"
Type Fluid in Hole	CHEMICAL MUD
Density / Viscosity	9.5/56
pH / Fluid Loss	9.0/10.4
Source of Sample	FLOWLINE
Rm @ Meas. Temp	.60 @ 62F
Rmt @ Meas. Temp	.45 @ 62F
Rmc @ Meas. Temp	.72 @ 62F
Source of Rmf / Rmc	MEASURED
Rm @ BHT	.31 @ 119F
Time Circulation Stopped	2 HOURS
Time Logger on Bottom	///
Maximum Recorded Temperature	119F
Equipment Number	1523
Location	HAYS, KANSAS
Recorded By	GUS PFANENSTIEL
Witnessed By	BOB WILLIAMS

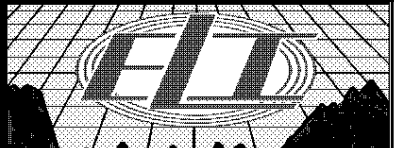
<<< Fold Here >>>

All interpretations are opinions based on inferences from electrical or other measurements and we cannot and do not guarantee the accuracy or correctness of any interpretation, and we shall not, except in the case of gross or willful negligence on our part, be liable or responsible for any loss, costs, damages, or expenses incurred or sustained by anyone resulting from any interpretation made by any of our officers, agents or employees. These interpretations are also subject to our general terms and conditions set out in our current Price Schedule.

Comments

THANK YOU FOR USING ELI WIRELINE, HAYS, KS. (785) 628-6395

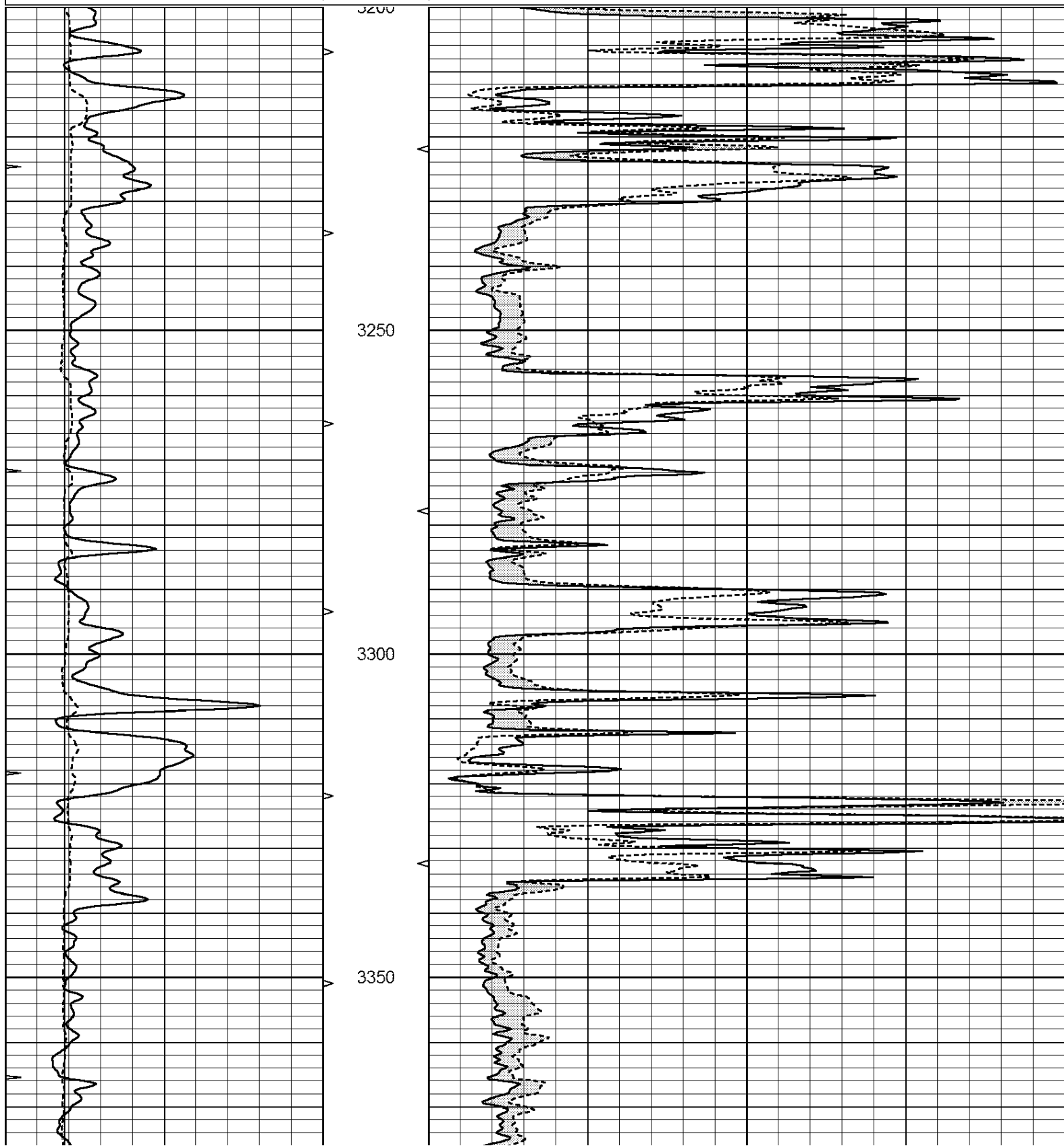
DIRECTIONS: 281 AND HWY 50, WEST 7 MILES ,1/2 NORTH, EAST INTO.

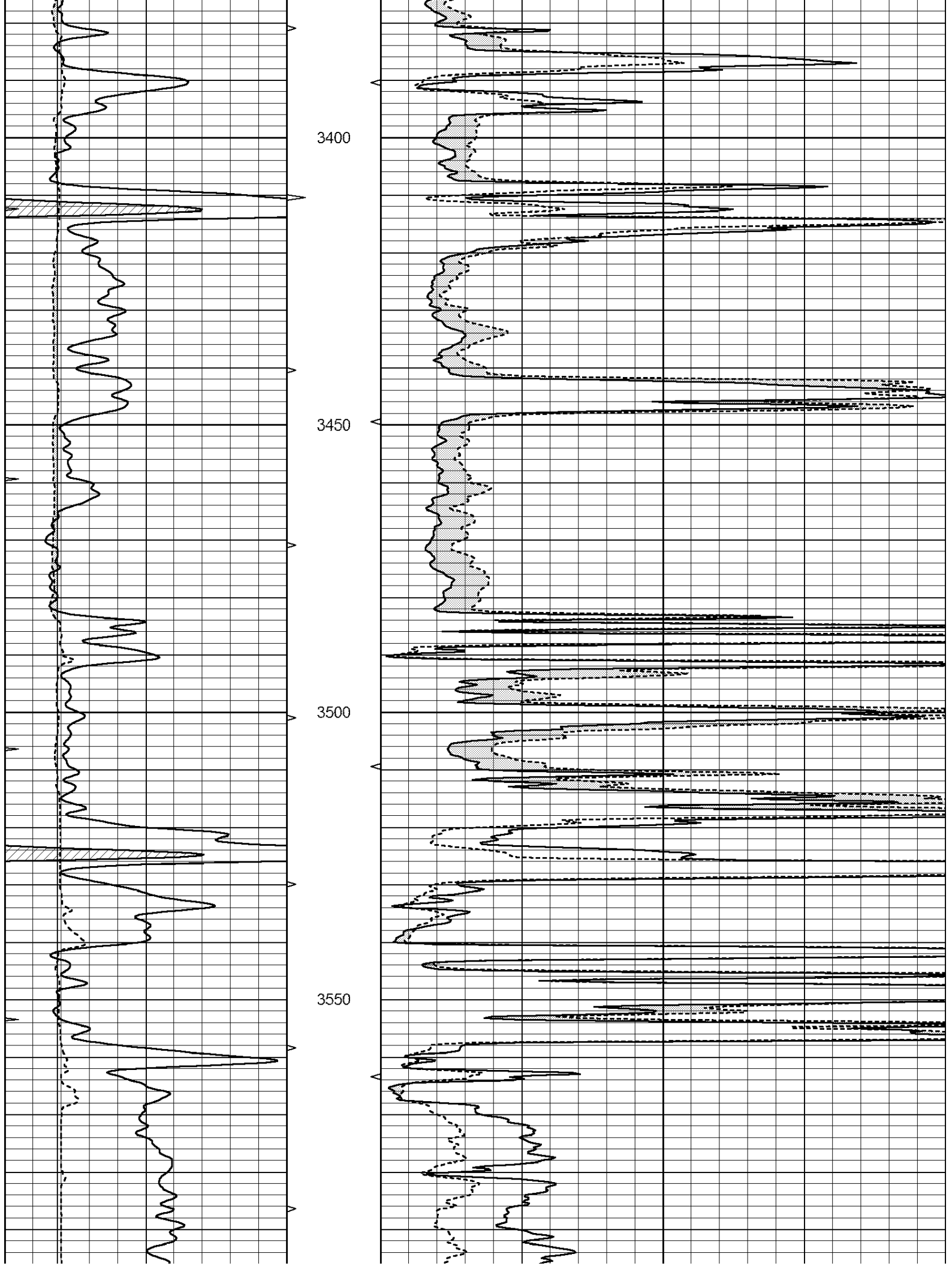


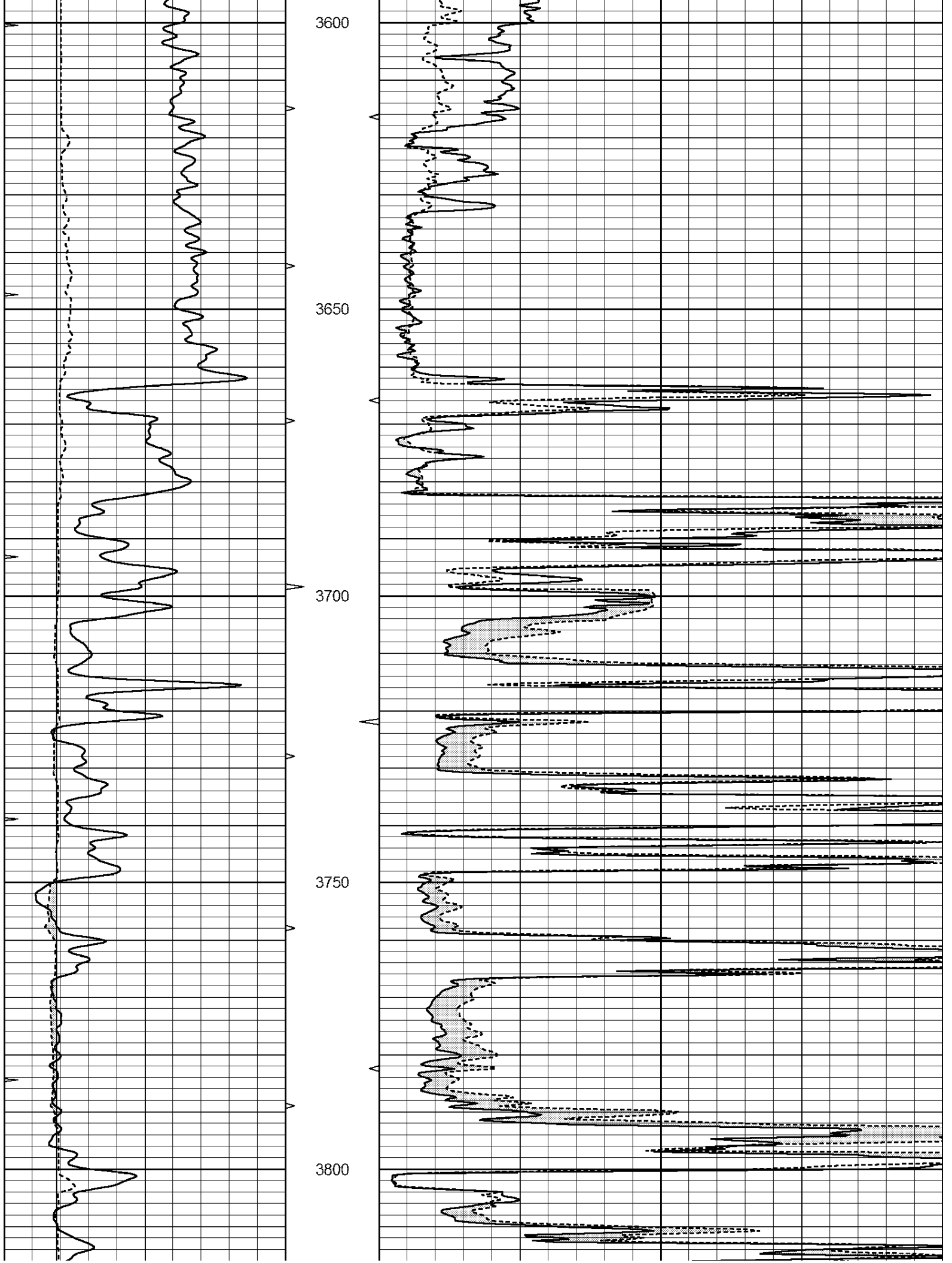
MAIN PASS

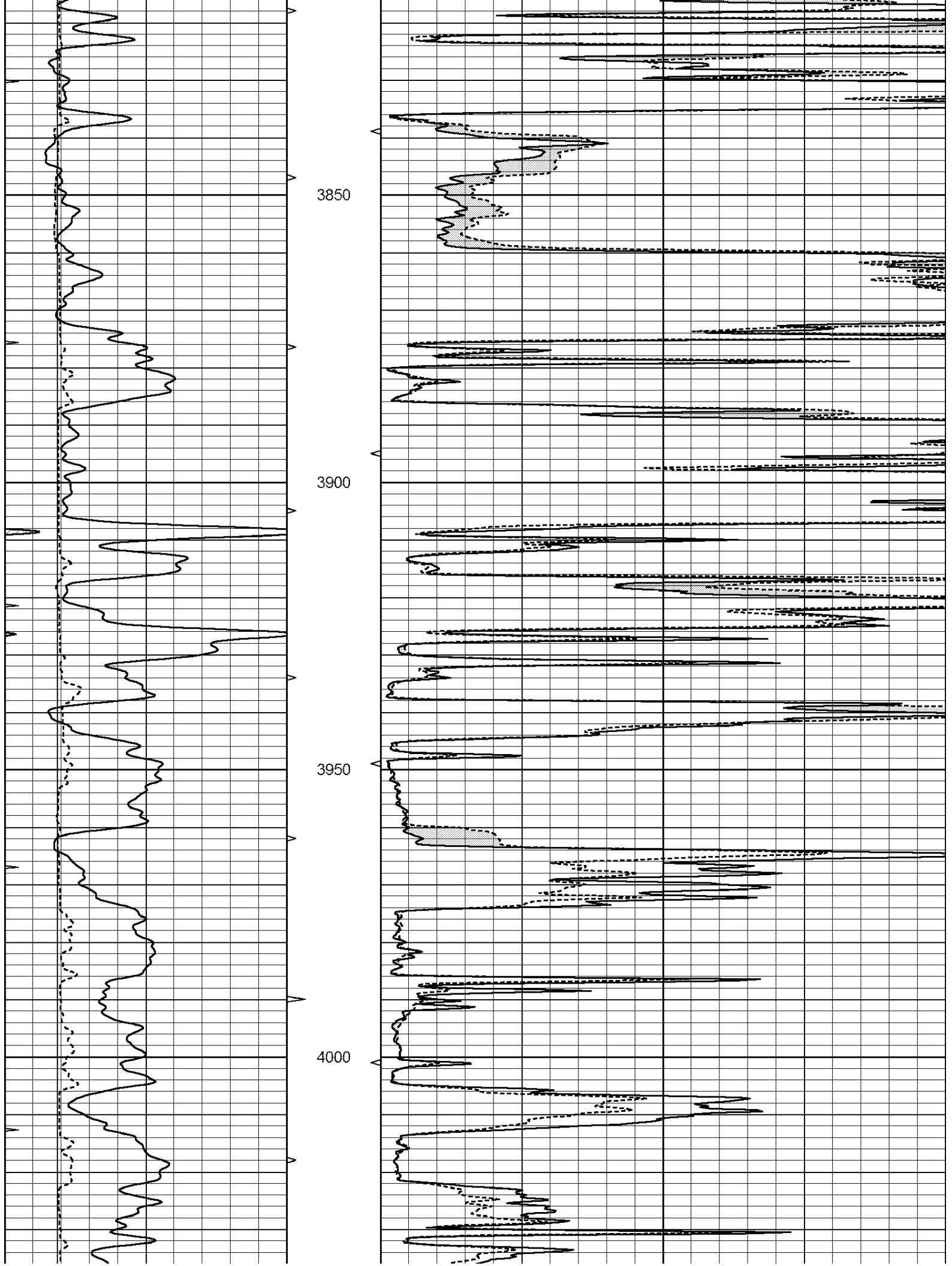
Database File: 4471ddn.db
 Dataset Pathname: pass5.1
 Presentation Format: _micro
 Dataset Creation: Sun Jan 05 06:21:27 2020
 Charted by: Depth in Feet scaled 1:240

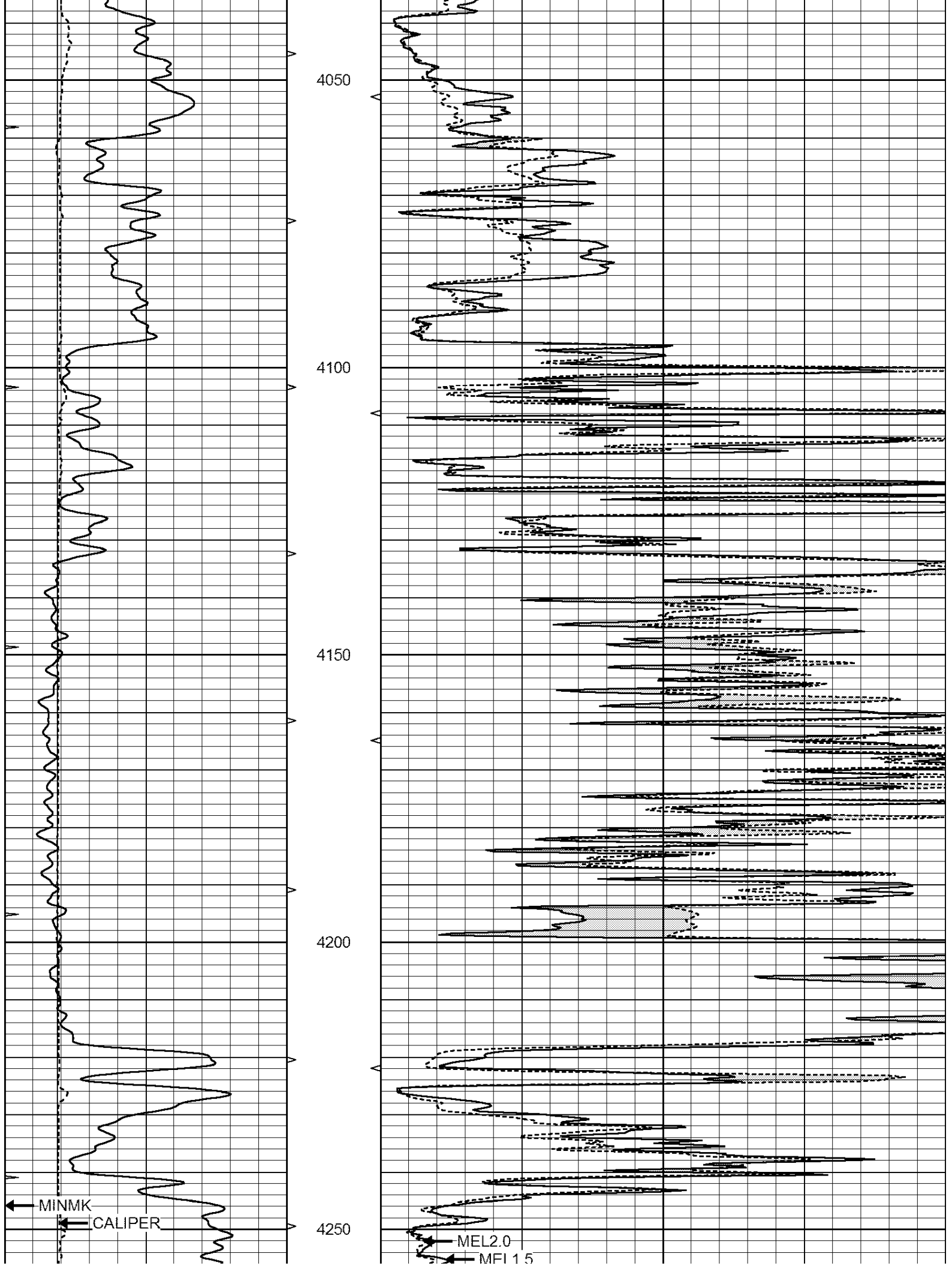
0	GAMMA RAY (GAPI)	150	ABHV	0	MEL1.5 (Ohm-m)	40
6	CALIPER (in)	16	10 (ft3)	0	MEL2.0 (Ohm-m)	40
0	MINMK	20	TBHV			
			0 (ft3)	10		

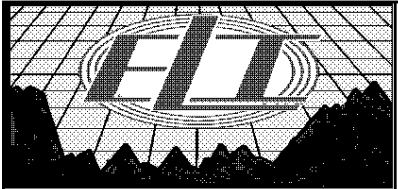
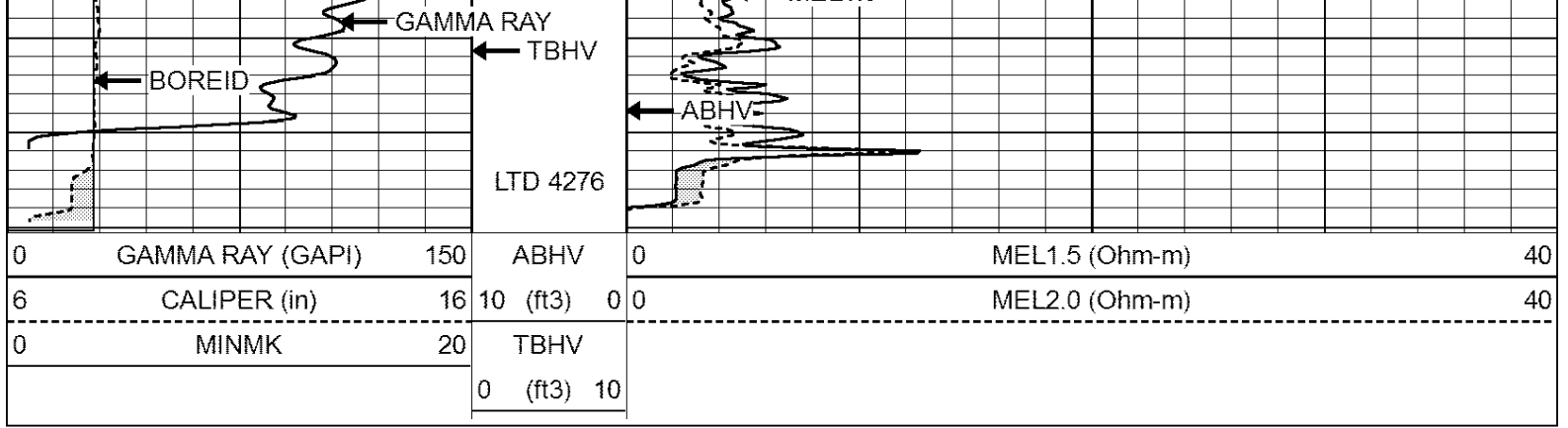








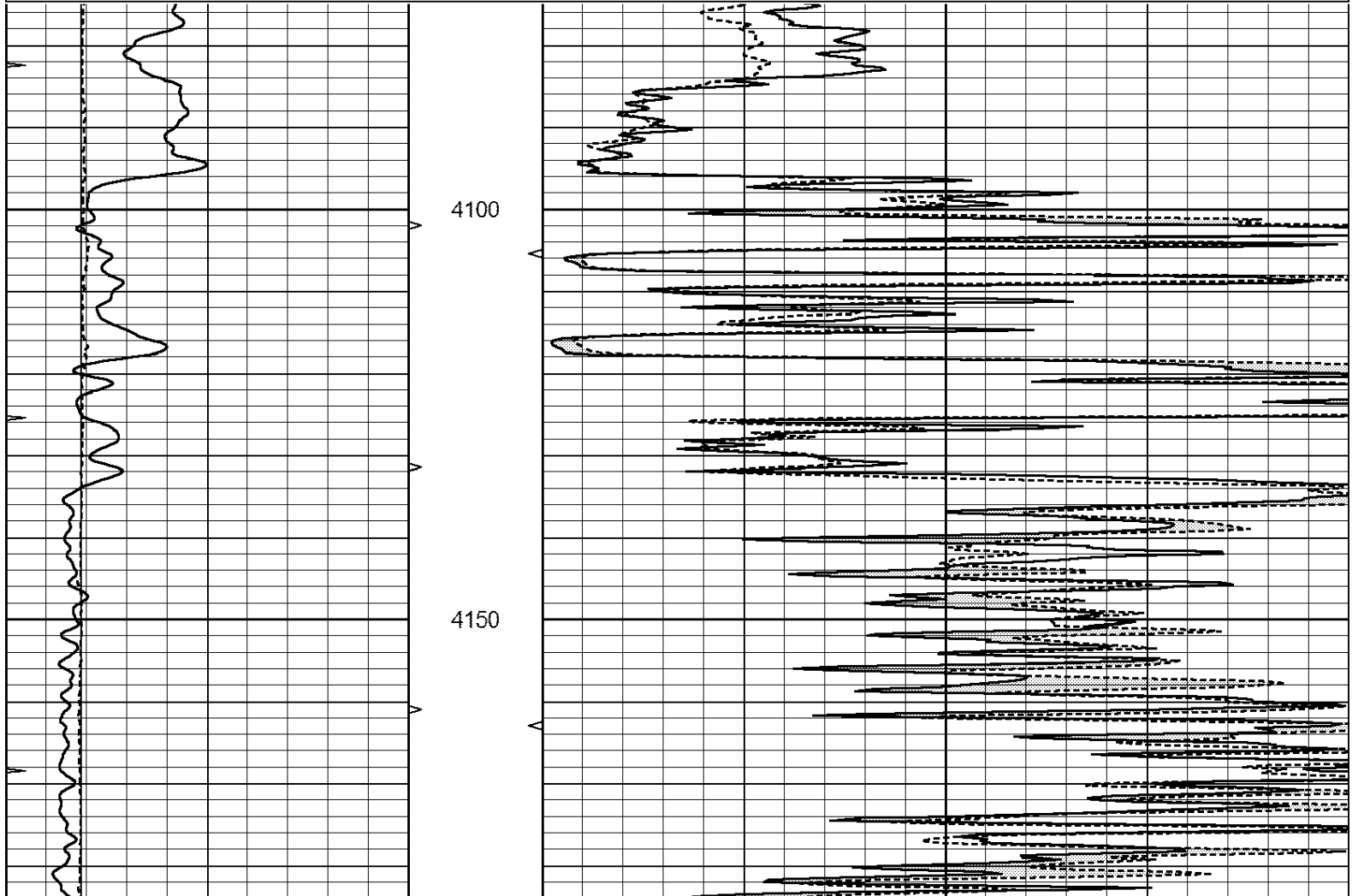


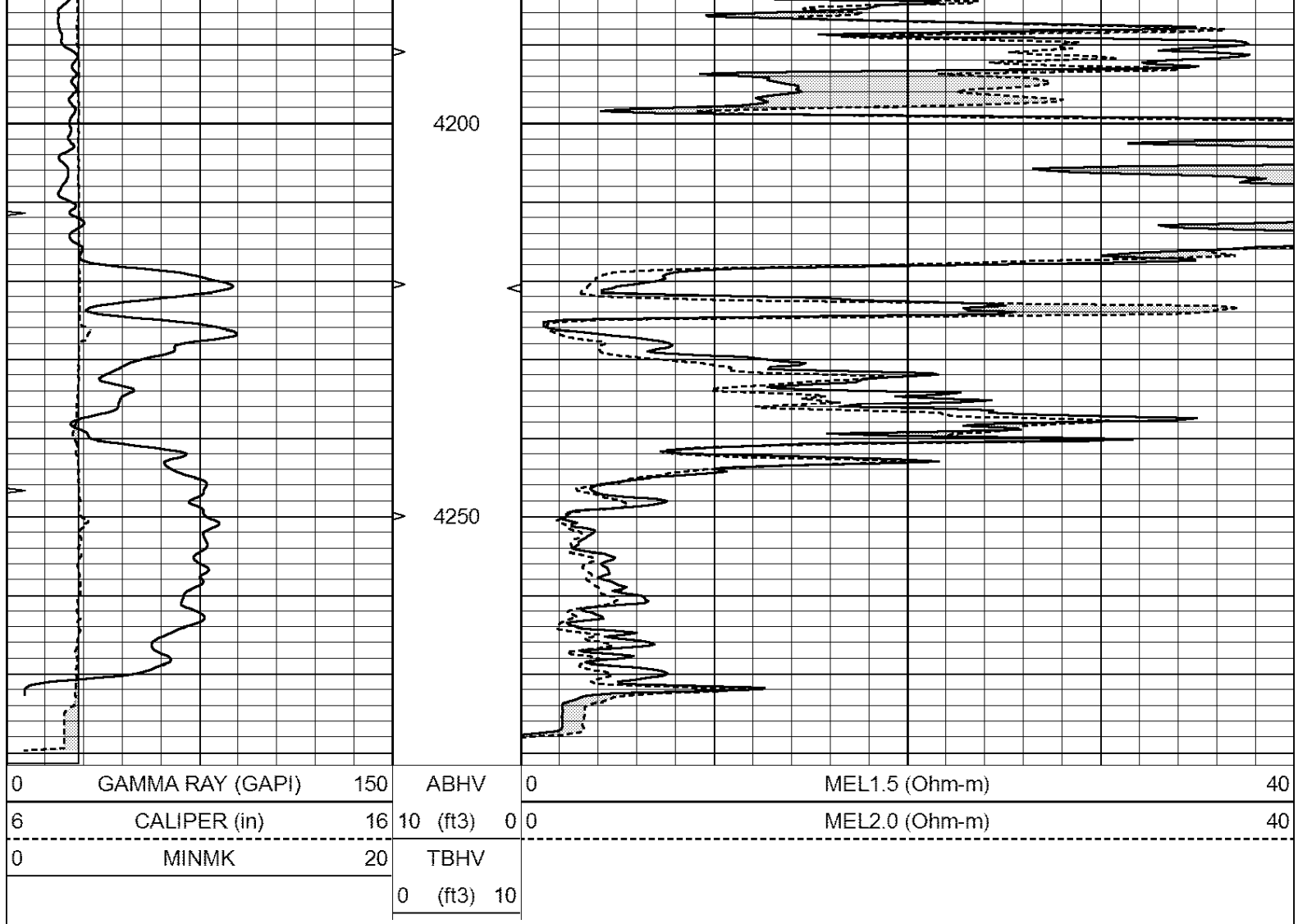


REPEAT SECTION

Database File: 4471ddn.db
 Dataset Pathname: pass4.1
 Presentation Format: _micro
 Dataset Creation: Sun Jan 05 06:05:10 2020
 Charted by: Depth in Feet scaled 1:240

0	GAMMA RAY (GAPI)	150	ABHV	0	MEL1.5 (Ohm-m)	40
6	CALIPER (in)	16	10 (ft3) 0	0	MEL2.0 (Ohm-m)	40
0	MINMK	20	TBHV			
			0 (ft3) 10			





Calibration Report

Database File: 4471ddn.db
 Dataset Pathname: pass4.1
 Dataset Creation: Sun Jan 05 06:05:10 2020

MICRO Calibration Report

Serial Number:	Micro1
Tool Model:	ProbeL
Performed:	Sun Jan 05 05:38:33 2020
Caliper Calibration:	Gain=2.130 Offset=6.455
References	Low Cal High Cal
Readings	9.500 13.000
	0.308 2.032
1.5" Calibration:	Gain=36.134 Offset=-1.000
References	Low Cal High Cal
Readings	0.000 20.000
	0.004 0.832
2" Calibration:	Gain=38.000 Offset=-0.800
References	Low Cal High Cal
Readings	0.000 20.000
	0.022 0.793

Gamma Ray Calibration Report

Serial Number: GR5
Tool Model: OPEN
Performed: Sun Jan 05 05:38:27 2020

Calibrator Value: 1.0 GAPI

Background Reading: 0.0 cps
Calibrator Reading: 1.0 cps

Sensitivity: 0.5000 GAPI/cps