



**MICRO
RESISTIVITY
LOG**

Company Palomino Petroleum
 Well Johnson-Byrd-White Unit #1
 Field Wildcat
 County Ness
 State Kansas

Company Palomino Petroleum
 Well Johnson-Byrd-White Unit #1
 Field Wildcat
 County Ness State Kansas

Location: API #: 15 135 25991
 1800' FNL & 2488' FEL
 SEC 7 TWP 19S RGE 25W
 Permanent Datum Ground Level Elevation 2582'
 Log Measured From KB 5' AGL
 Drilling Measured From KB
 Other Services
 DIL
 CDNL
 Elevation
 K.B. 2587'
 D.F. 2586'
 G.L. 2582'

Date	3-01-18
Run Number	One
Depth Driller	4700'
Depth Logger	4700'
Bottom Logged Interval	4698'
Top Log Interval	3600'
Casing Driller	218'
Casing Logger	218'
Bit Size	7 7/8"
Type Fluid in Hole	Chemical
Density / Viscosity	9.2/60+
PH / Fluid Loss	10.5/6.4
Source of Sample	Pit
Rm @ Meas. Temp	0.70@90degf
Rmf @ Meas. Temp	0.56@90degf
Rmc @ Meas. Temp	0.90@90degf
Source of Rmf / Rmc	Calculated
Rm @ BHT	0.58@109degf
Time Circulation Stopped	2:00 p.m
Time Logger on Bottom	6:20 p.m
Maximum Recorded Temperature	109degf
Equipment Number	T127
Location	Hays, KS
Recorded By	C.Patterson
Witnessed By	Mr. Ryan Seib

<<< Fold Here >>>

All interpretations are opinions based on inferences from electrical or other measurements and we cannot and do not guarantee the accuracy or correctness of any interpretation, and we shall not, except in the case of gross or willful negligence on our part, be liable or responsible for any loss, costs, damages, or expenses incurred or sustained by anyone resulting from any interpretation made by any of our officers, agents or employees. These interpretations are also subject to our general terms and conditions set out in our current Price Schedule.

Comments

**Beeler, KS Go South on C Rd. (east side of Beeler) to 100 Rd. (Aprox 3 to 4 mi)
 Then go East on 100 Rd. to Cattle Guard, Go Right After Cattle Guard & Follow trail to location
 (south to east and then north into)**

Thanks for using Gemini Wireline LLC
 785-625-1182

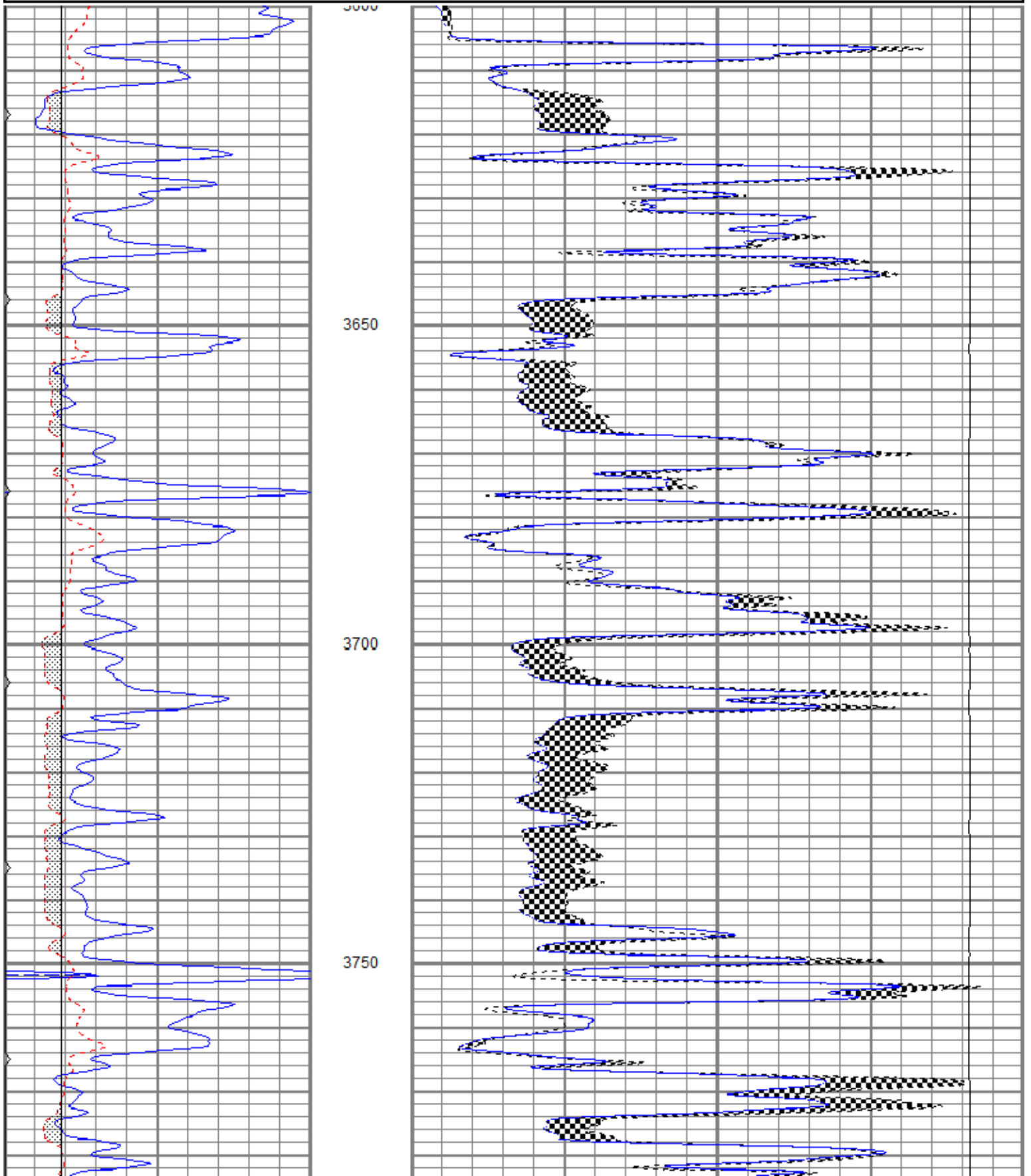


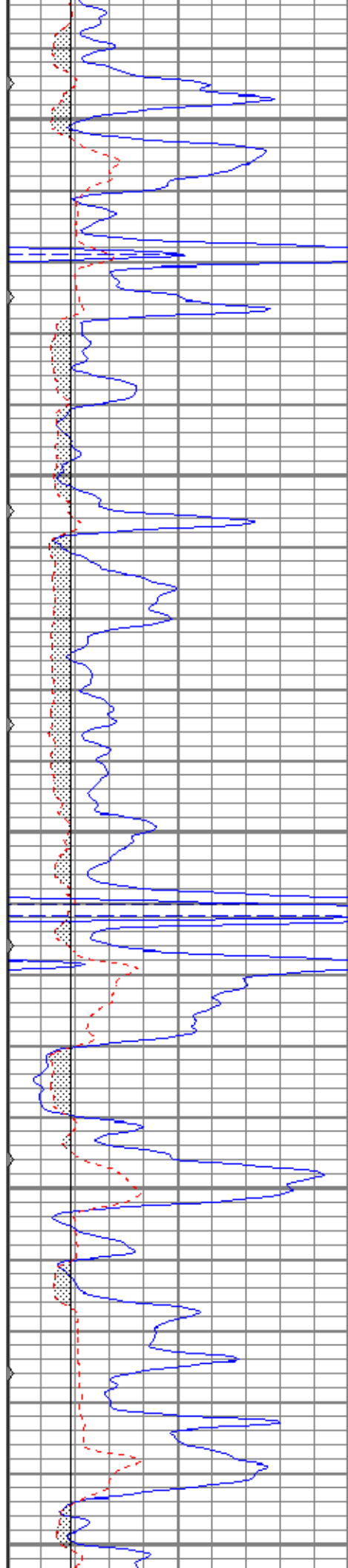
MAIN PASS

Database File ppjohnsonbyrdwhiteunit1oh.db
 Dataset Pathname pass4
 Presentation Format kml
 Dataset Creation Thu Mar 01 18:32:24 2018
 Charted by Depth in Feet scaled 1:240

0	GR (GAPI)	150
6	MCAL (in)	16
6	BOREID (in)	16
0	MINMK	50

0	MN 2" (Ohm-m)	20
0	MI 1" (Ohm-m)	20
10000	LTEN (lb)	0





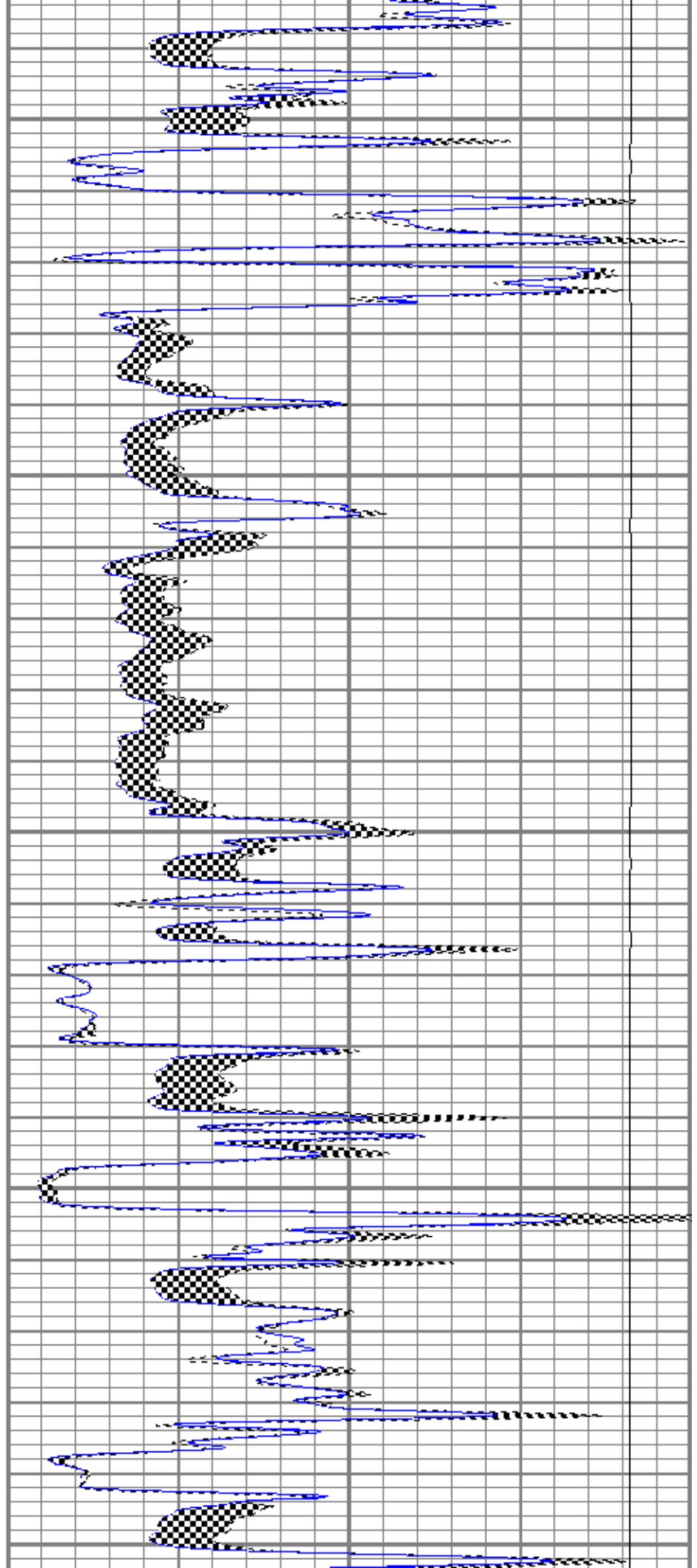
3800

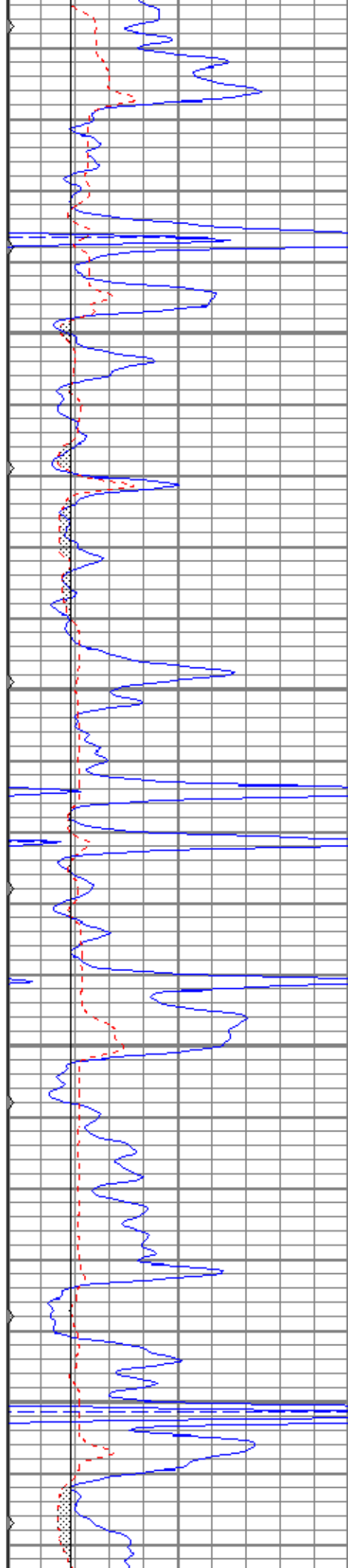
3850

3900

3950

4000



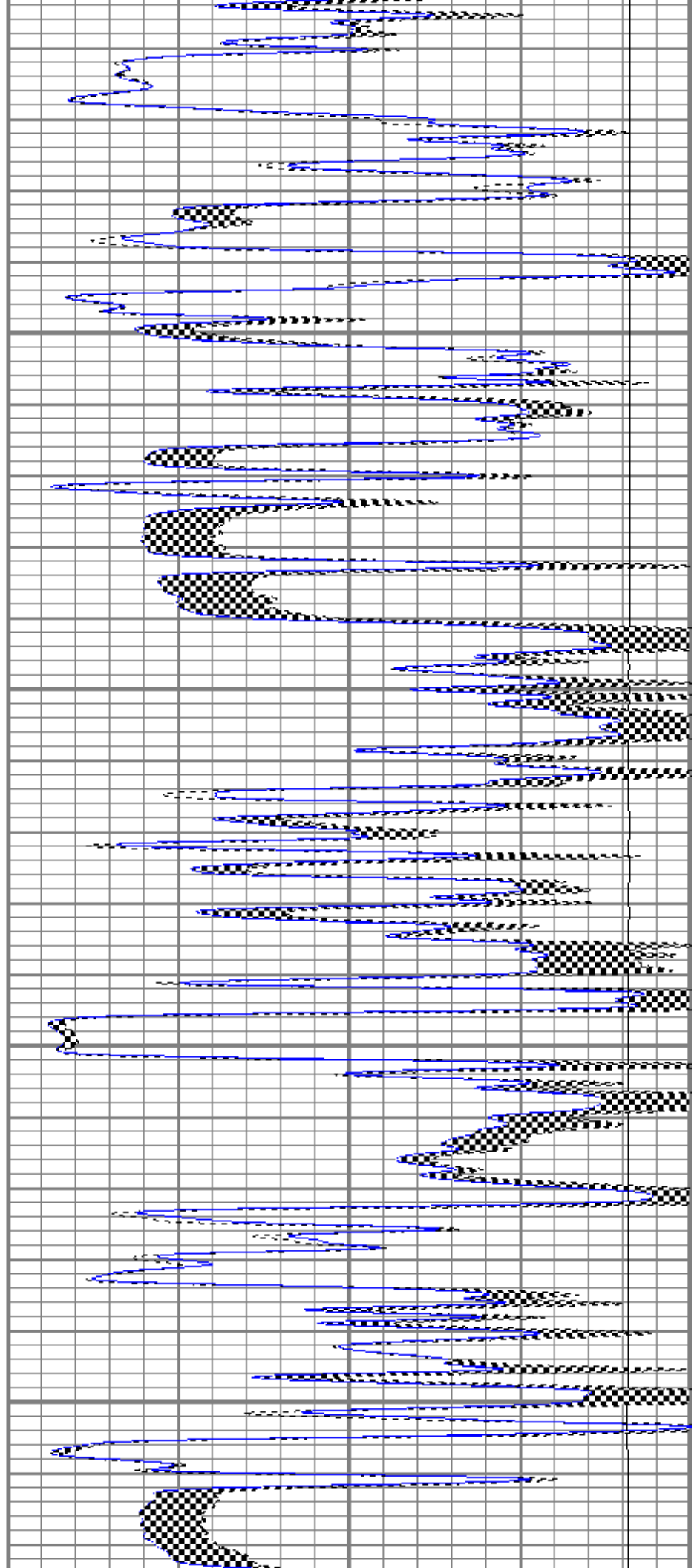


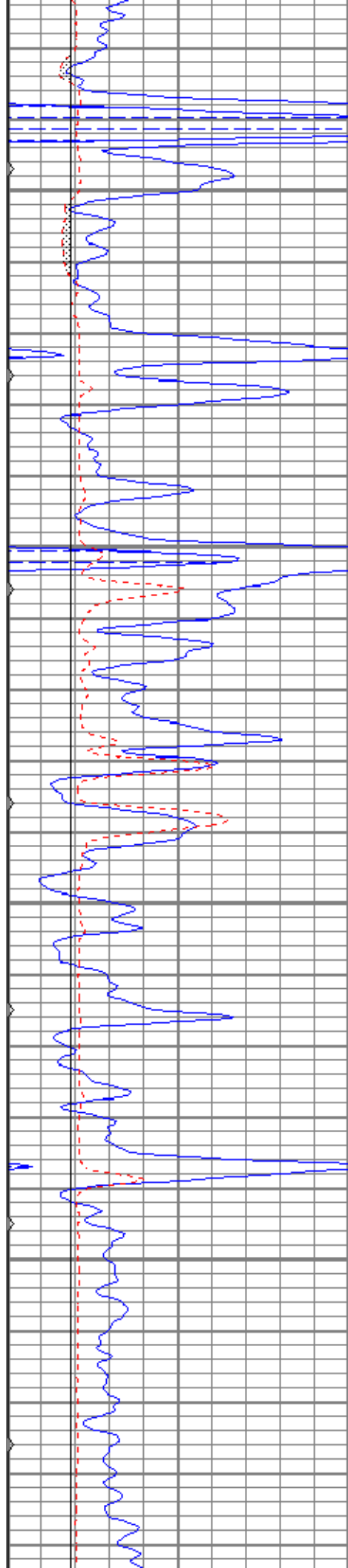
4050

4100

4150

4200



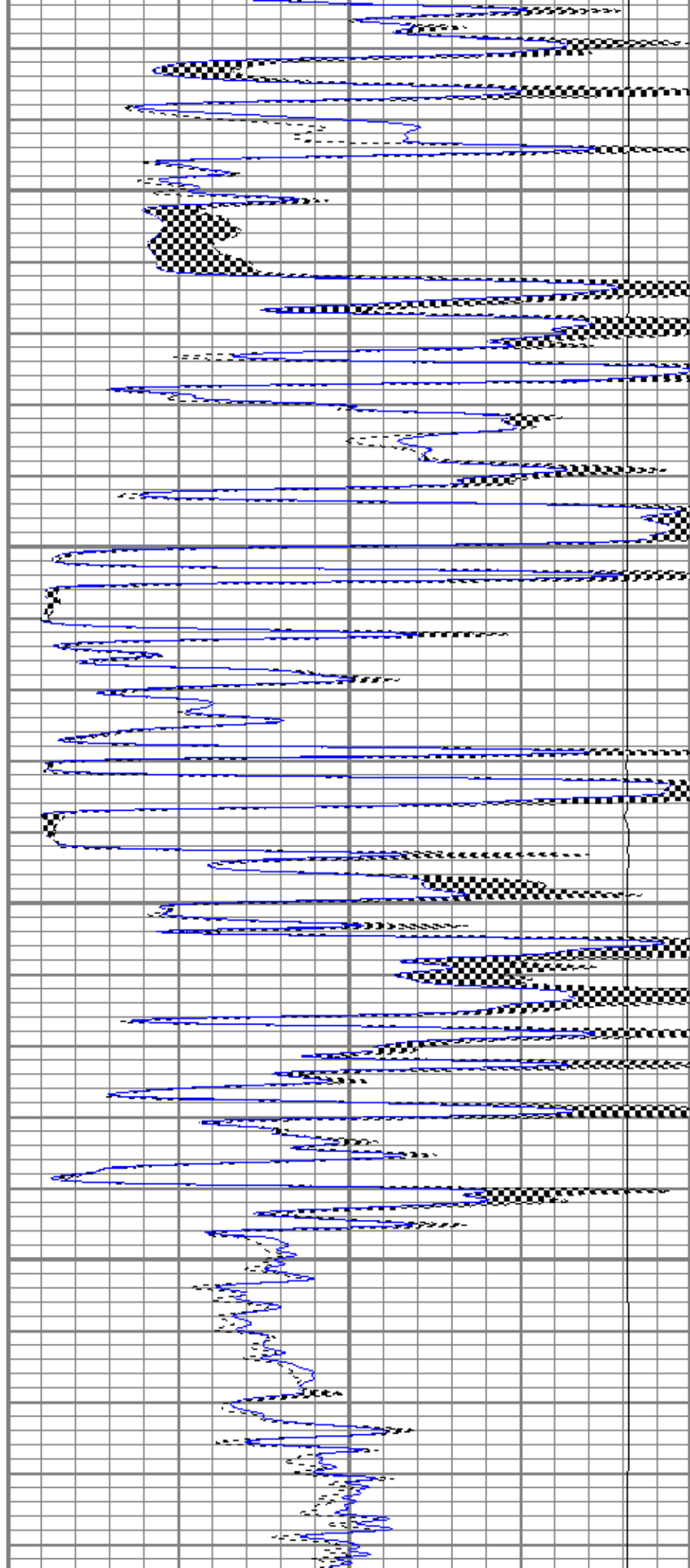


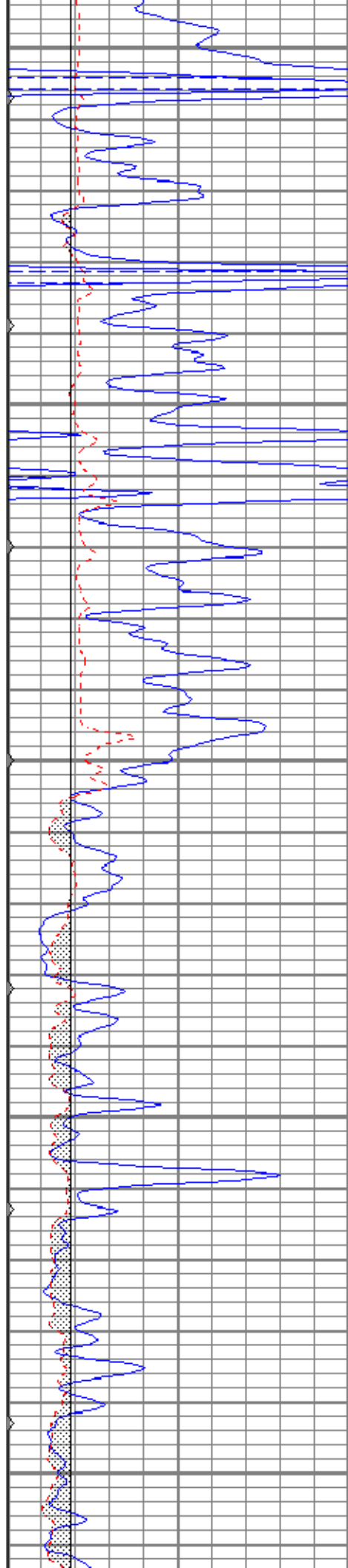
4250

4300

4350

4400





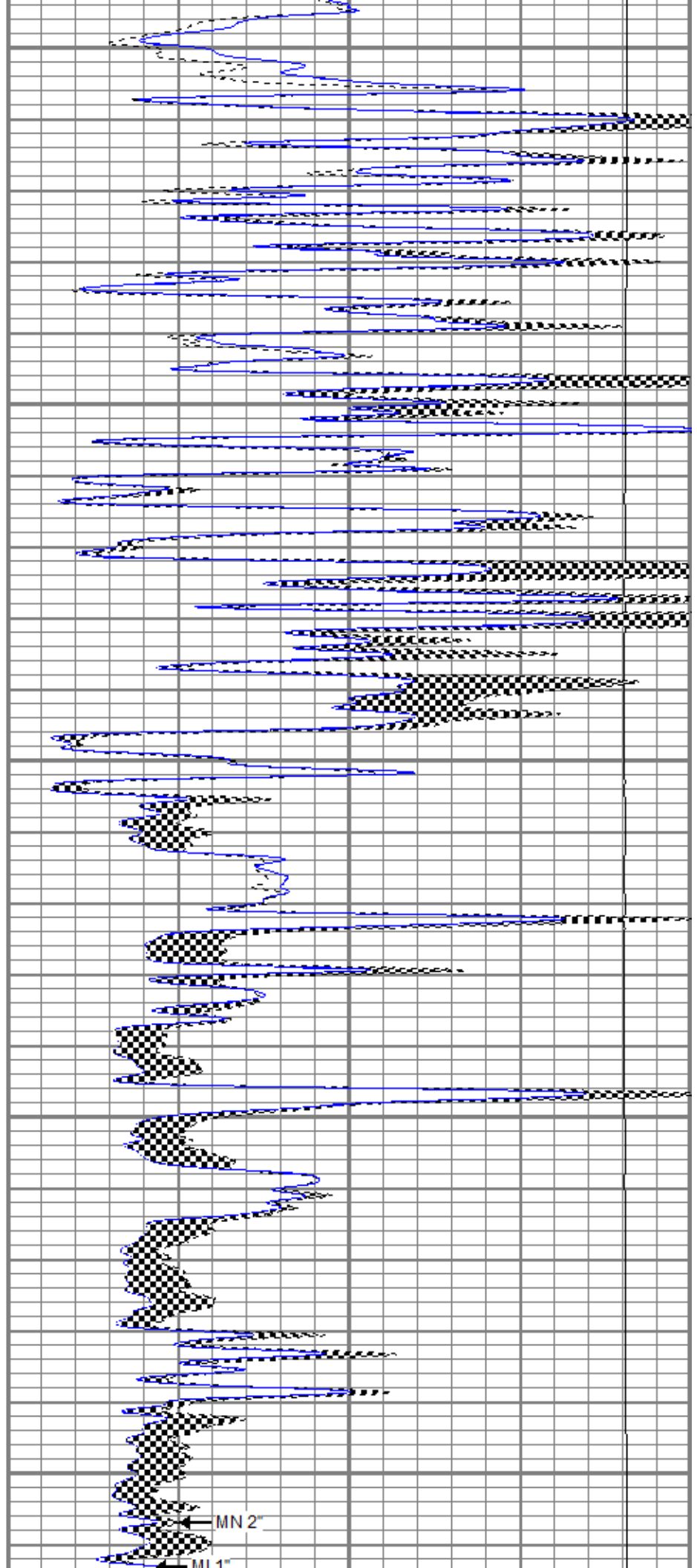
4450

4500

4550

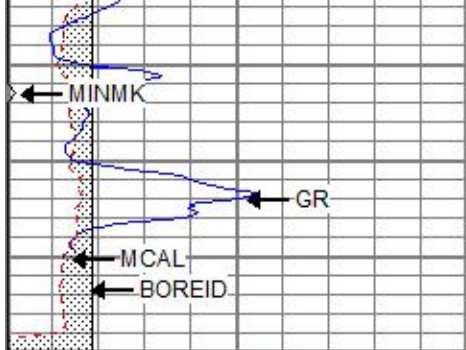
4600

4650



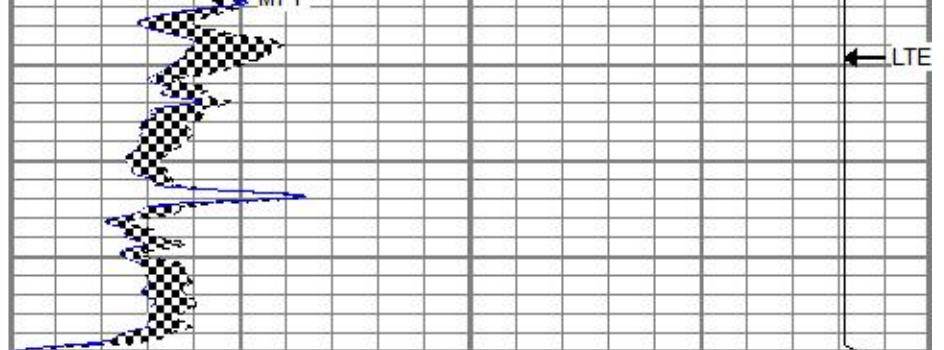
MN 2'

MI 1'



0	GR (GAPI)	150
6	MCAL (in)	16
6	BOREID (in)	16
0	MINMK	50

1700



0	MN 2" (Ohm-m)	20
0	MI 1" (Ohm-m)	20
10000	LTEN (lb)	0

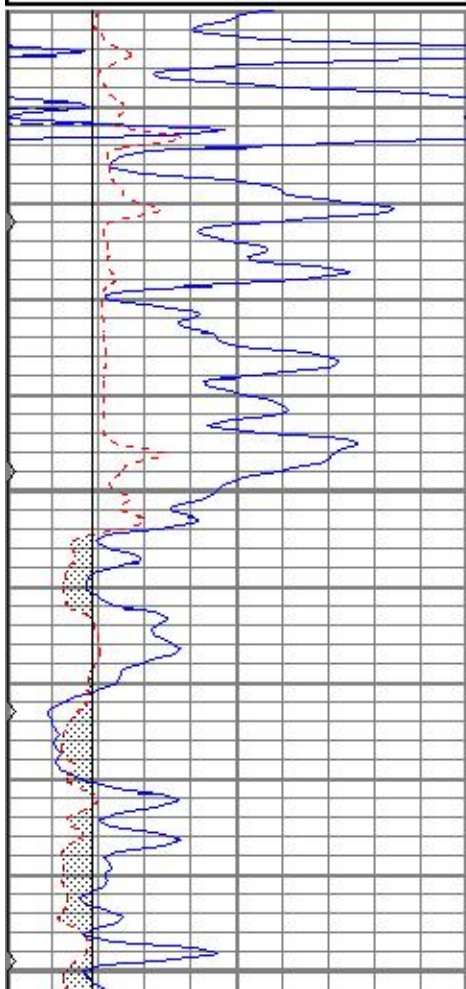


REPEAT SECTION

Database File ppjohnsonbyrdwhiteunit1oh.db
 Dataset Pathname pass3
 Presentation Format kml
 Dataset Creation Thu Mar 01 18:20:33 2018
 Charted by Depth in Feet scaled 1:240

0	GR (GAPI)	150
6	MCAL (in)	16
6	BOREID (in)	16
0	MINMK	50

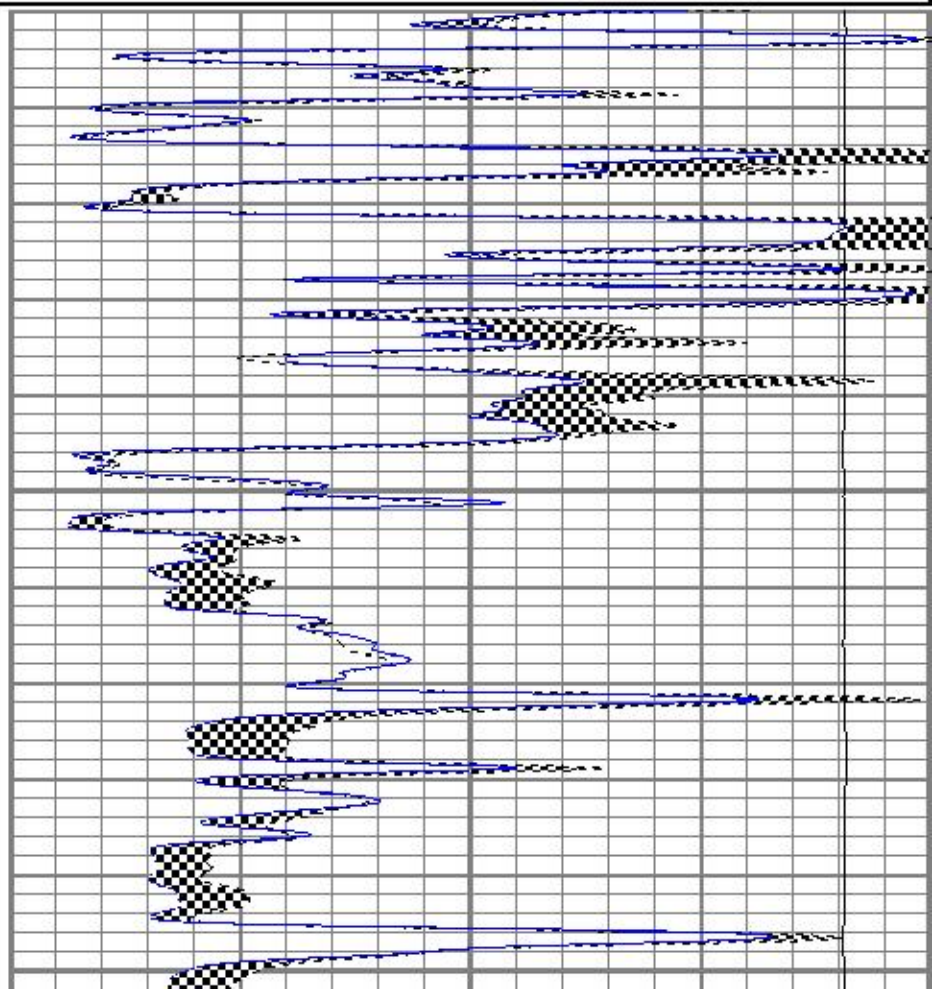
0	MN 2" (Ohm-m)	20
0	MI 1" (Ohm-m)	20
10000	LTEN (lb)	0




4500

4550

4600



Sensor	Offset (ft)	Schematic	Description	Length (ft)	O.D. (in)	Weight (lb)
GR	8.13		CHD-None	0.75	1.50	5.00
MCAL	1.30		GR-OH (2001)	3.56	3.25	40.00
MI	1.30		2001			
MN	1.30		ML-Pengo (1600)	6.97	3.50	100.00
		Dataset:	ppjohnsonbyrdwhiteunit1oh.db: field/well/run1/pass4			
		Total length:	11.28 ft			
		Total weight:	145.00 lb			
		O.D.:	3.50 in			