



SONIC LOG

Company TRANS PACIFIC OIL CORPORATION
 Well ODLE A#1-36
 Field WILDCAT
 County ROOKS State KANSAS

Location: API #: 15-163-24359-00-00
 1635' FSL & 1812' FWL
 SEC 36 TWP 6S RGE 19W
 Permanent Datum GROUND LEVEL Elevation 1957
 Log Measured From KELLY BUSHING 8' A.G.L
 Drilling Measured From KELLY BUSHING
 Other Services CDL/CNL/DIL SONIC
 Elevation K.B. 1965
 D.F. 1963
 G.L. 1957

Date	4/17/18
Run Number	TWO
Depth Driller	3645
Depth Logger	3647
Bottom Logged Interval	3543
Top Log Interval	50
Casing Driller	8 5/8" @ 219
Casing Logger	219
Bit Size	7 7/8
Type Fluid in Hole	CHEMICAL MUD
Density / Viscosity	9.1/58
PH / Fluid Loss	10.5/6.8
Source of Sample	FLOWLINE
Rm @ Meas. Temp	1.6 @ 52F
Rmt @ Meas. Temp	1.2 @ 52F
Rmc @ Meas. Temp	1.92 @ 52F
Source of Rmf / Rmc	MEASUREMENT
Rm @ BHT	.74 @ 112F
Time Circulation Stopped	2 HOURS
Time Logger on Bottom	////
Maximum Recorded Temperature	112F
Equipment Number	3802
Location	HAYS, KANSAS
Recorded By	GUS PFANENSTIEL
Witnessed By	NICK HIXON

<<< Fold Here >>>

All interpretations are opinions based on inferences from electrical or other measurements and we cannot and do not guarantee the accuracy or correctness of any interpretation, and we shall not, except in the case of gross or willful negligence on our part, be liable or responsible for any loss, costs, damages, or expenses incurred or sustained by anyone resulting from any interpretation made by any of our officers, agents or employees. These interpretations are also subject to our general terms and conditions set out in our current Price Schedule.

Comments

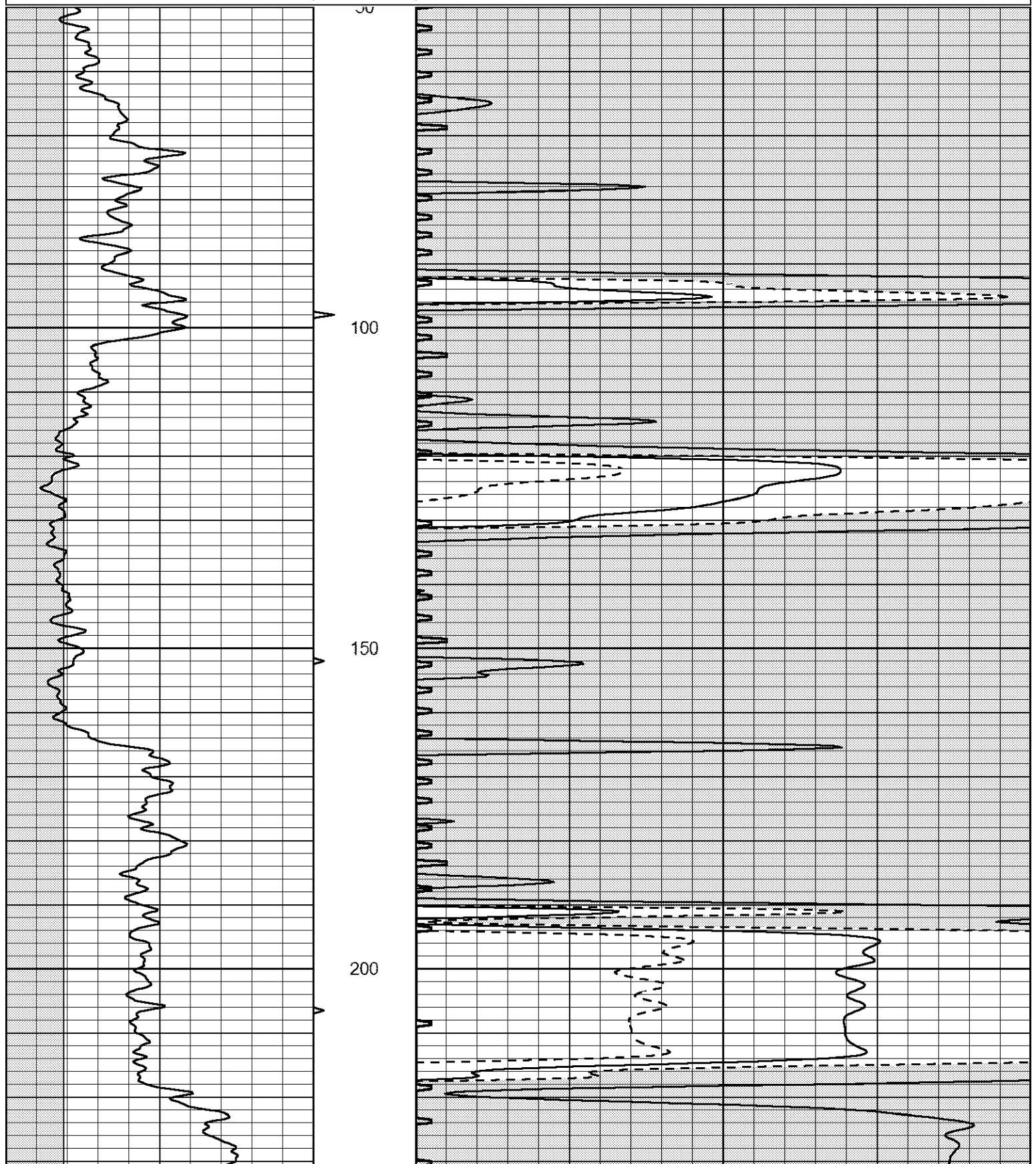
THANK YOU FOR USING ELI WIRELINE SERVICES, HAYS, KS. (785) 628-6395
 DIRECTIONS
 STOCKTON 3 NORTH AND 6 WEST

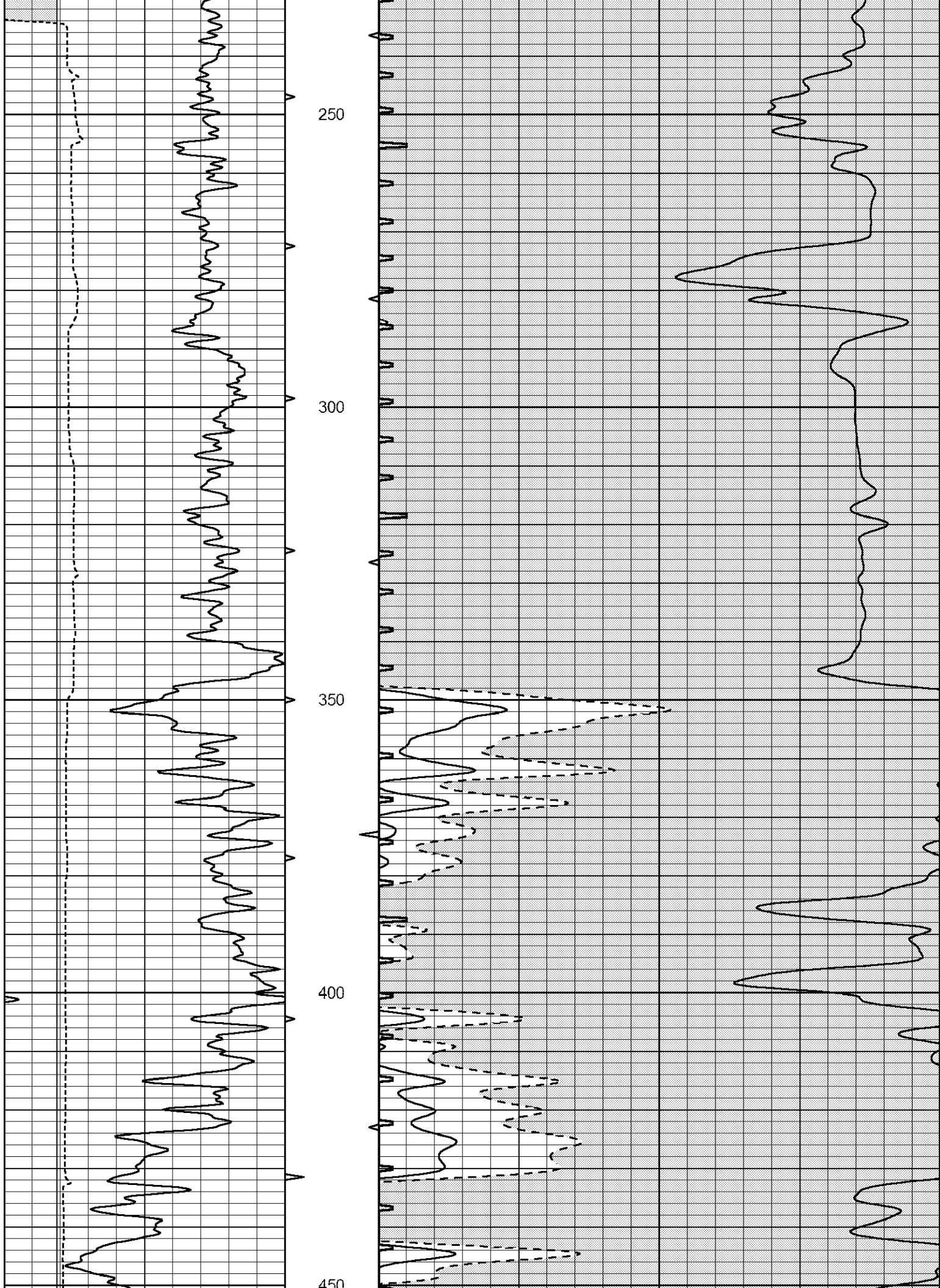


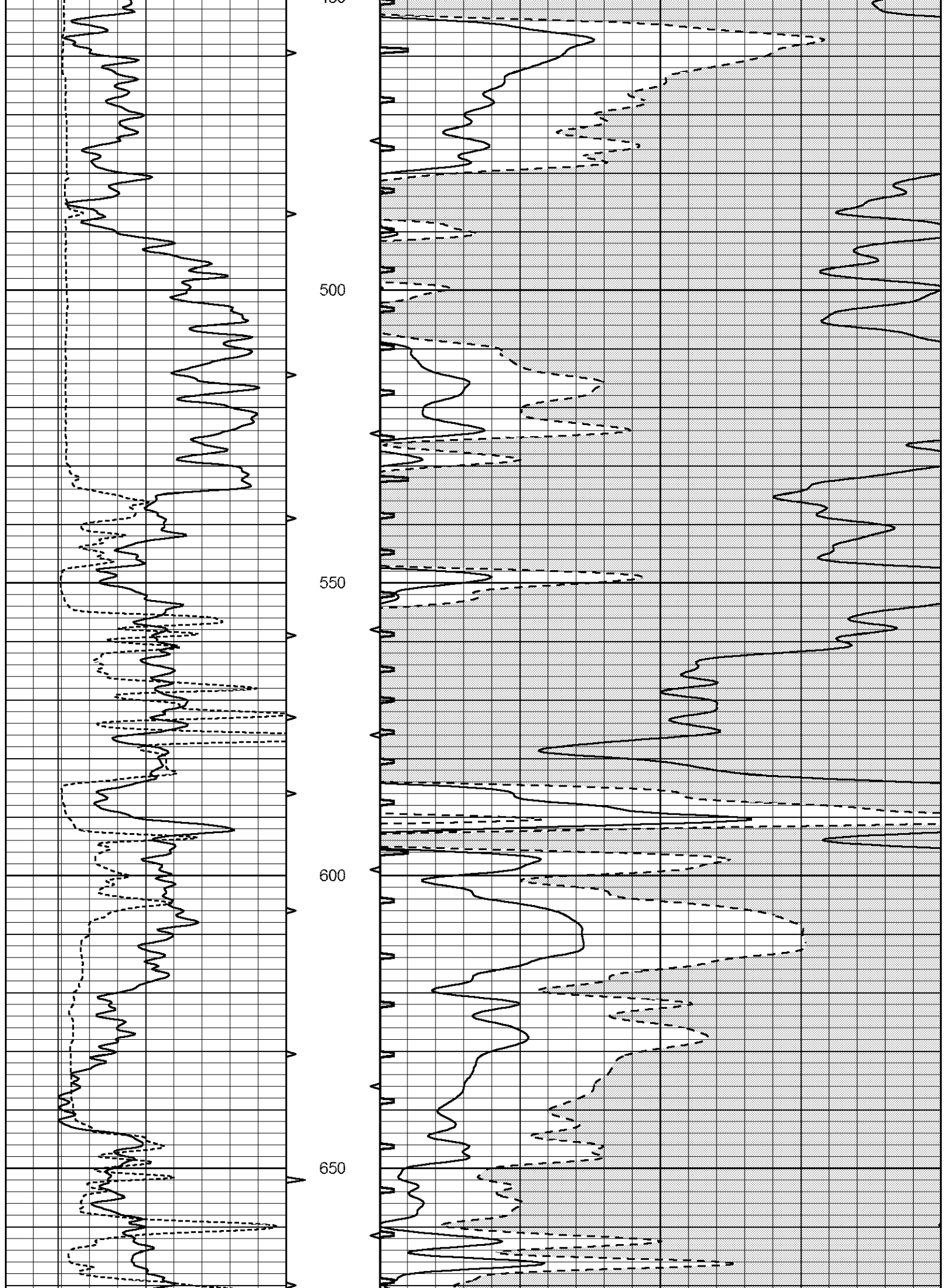
MAIN PASS

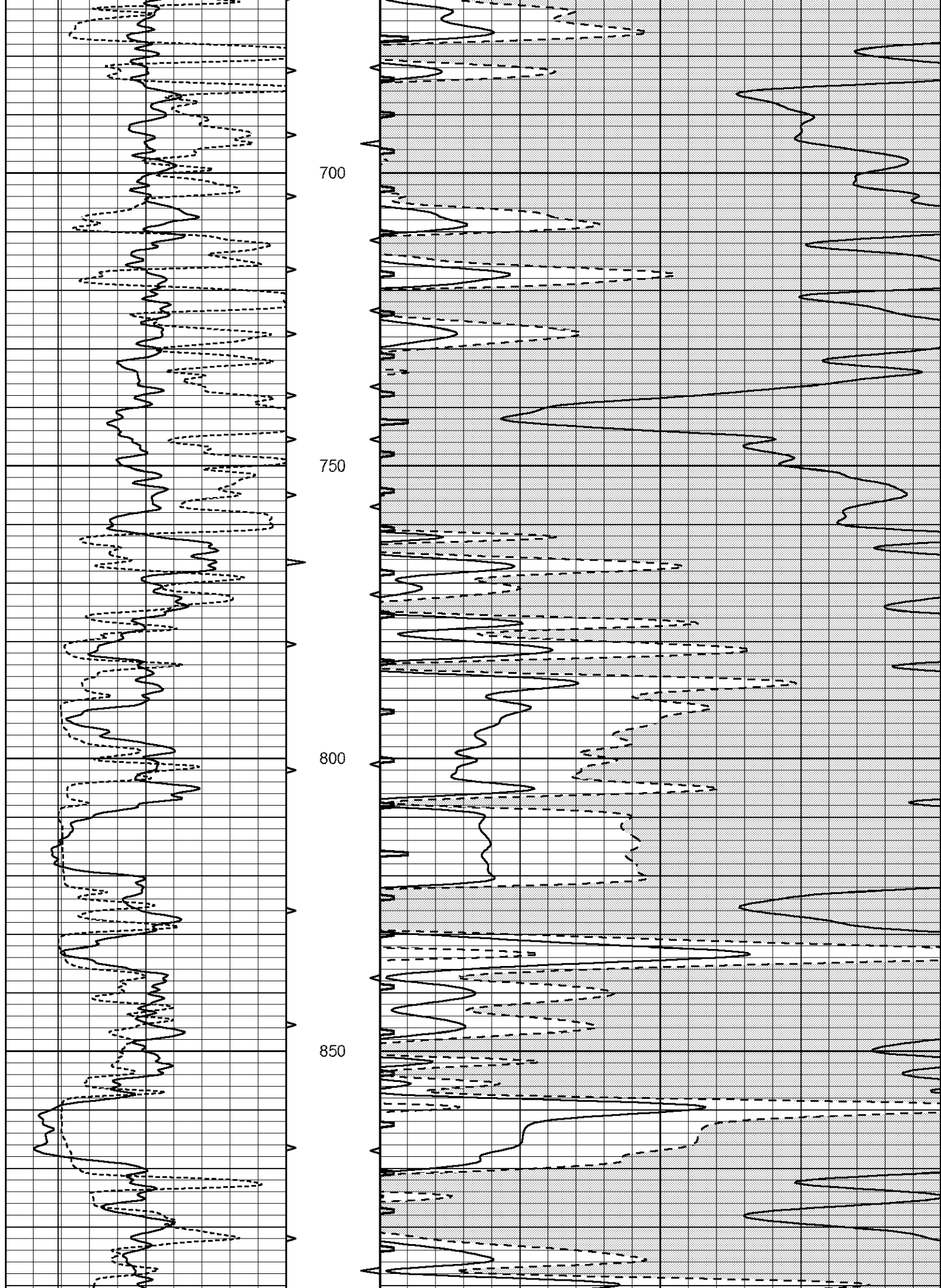
Database File 2044ddn.db
 Dataset Pathname pass5.1
 Presentation Format _slt
 Dataset Creation Tue Apr 17 09:13:07 2018
 Charted by Depth in Feet scaled 1:240

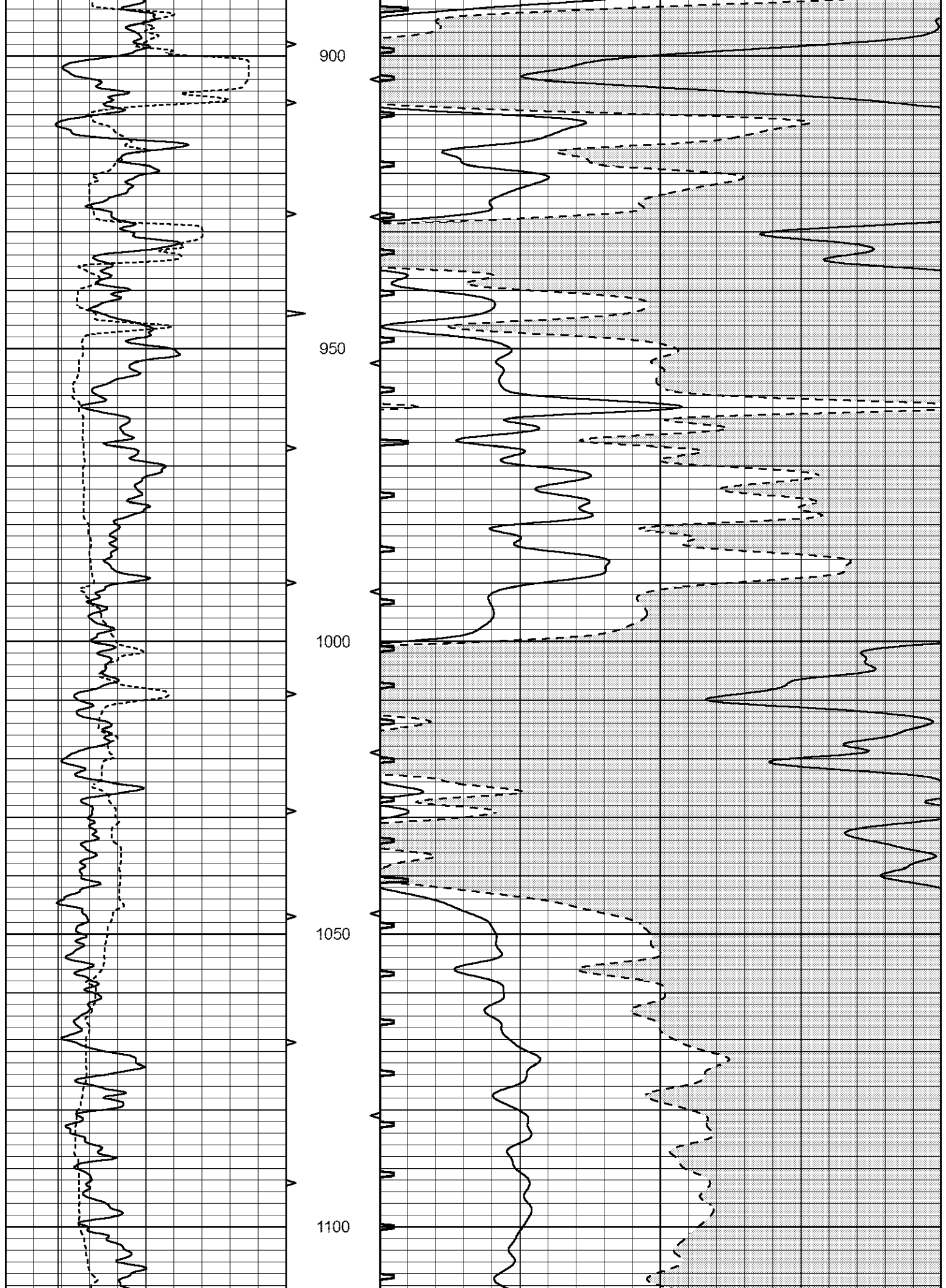
0	GAMMA RAY (GAPI)	150	ABHV	140	DELTA TIME (usec/ft)	40	
6	CALIPER (in)	16	10 (ft3)	0	30	SONIC POROSITY (pu)	-10
-----			TBHV	0	ITT (msec)	20	
			0 (ft3)	10			

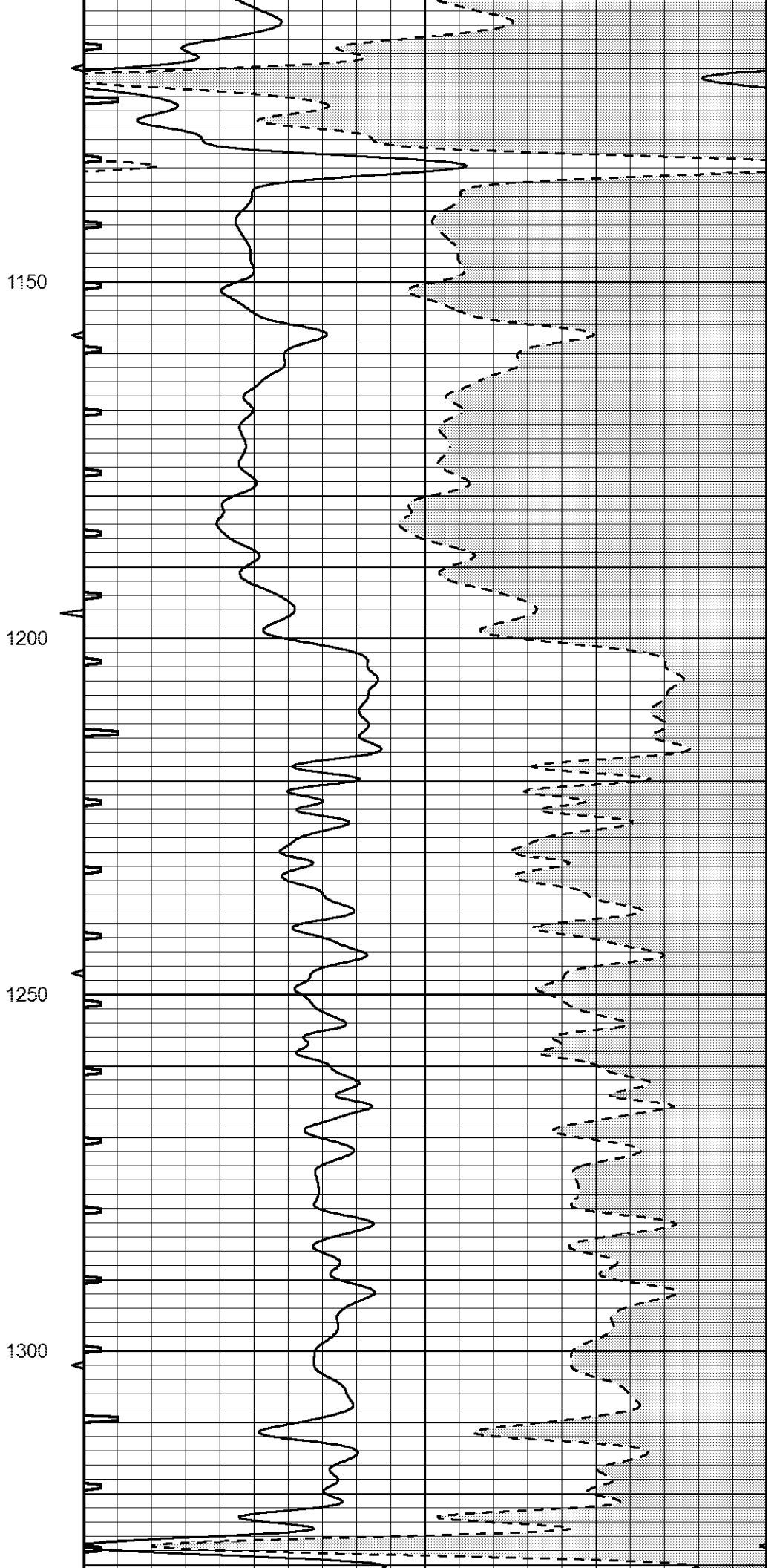
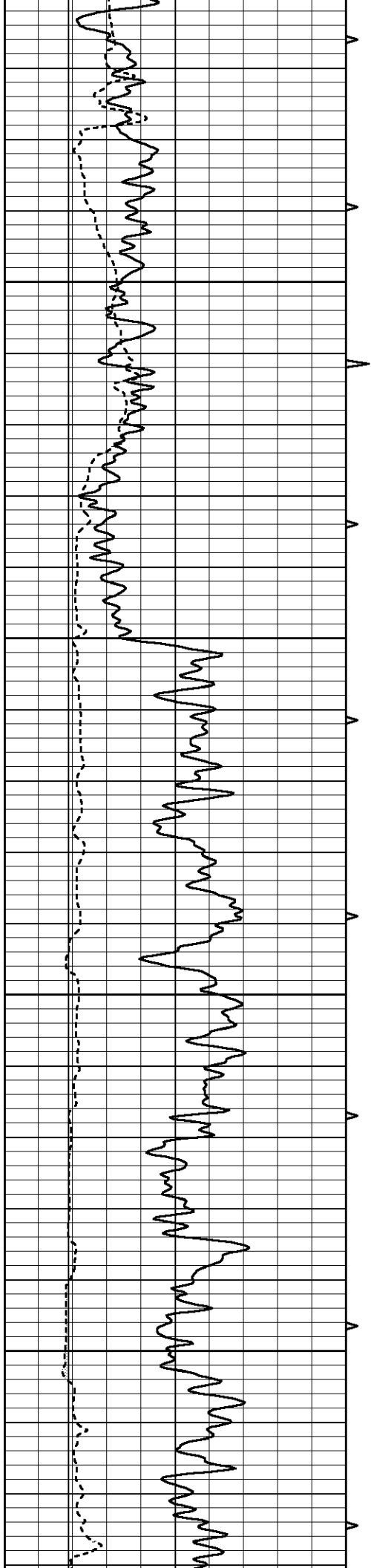


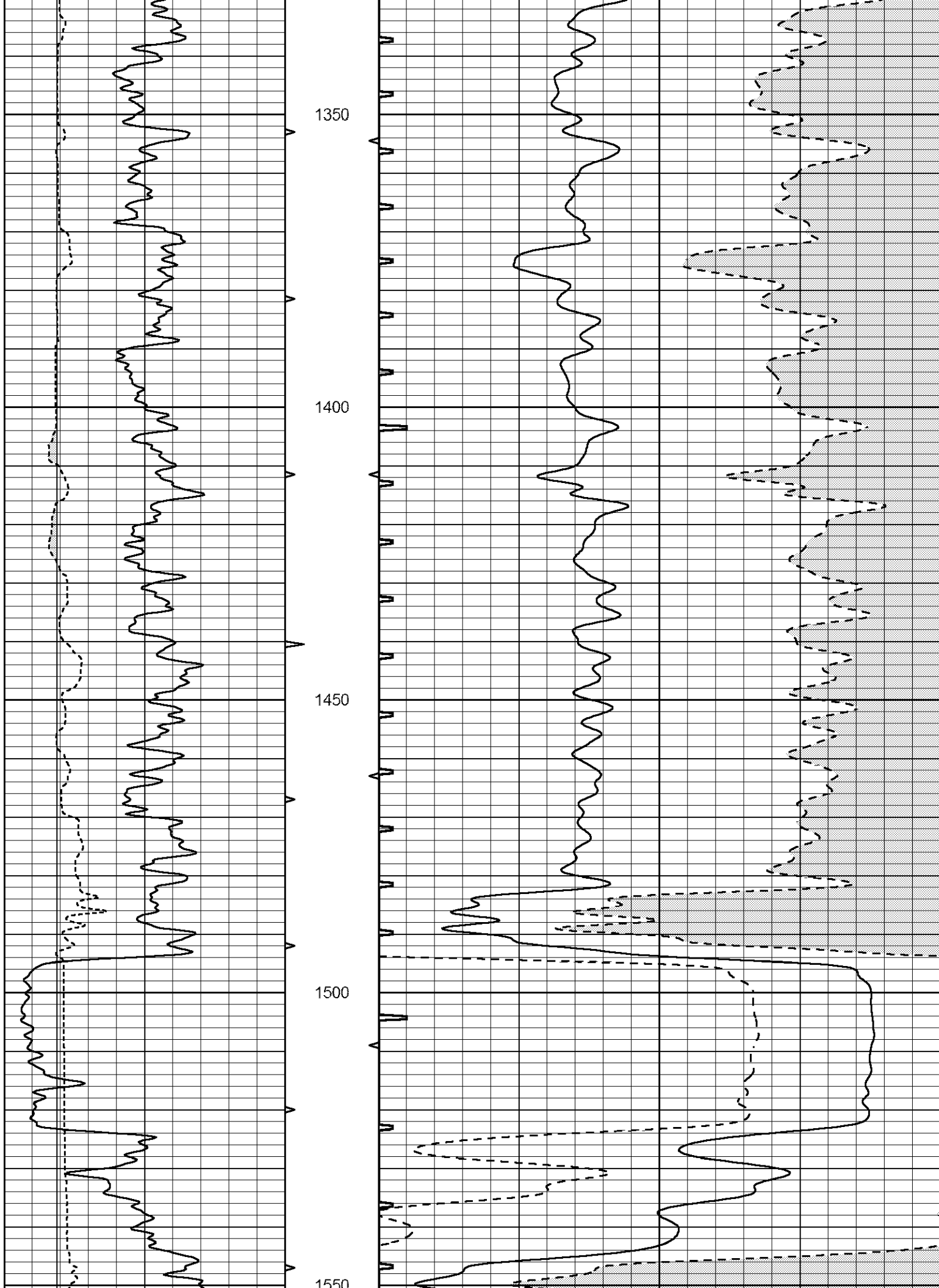


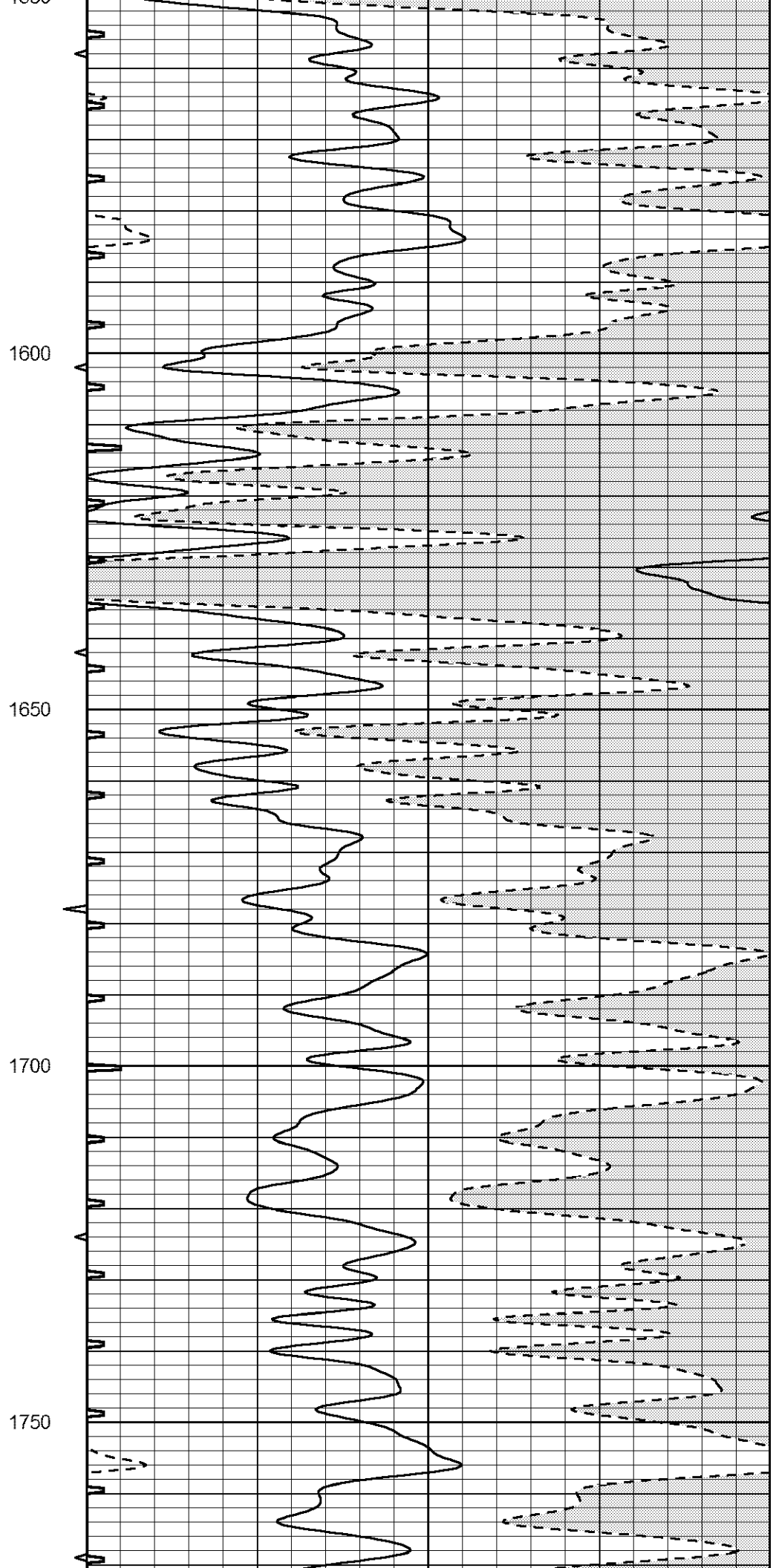
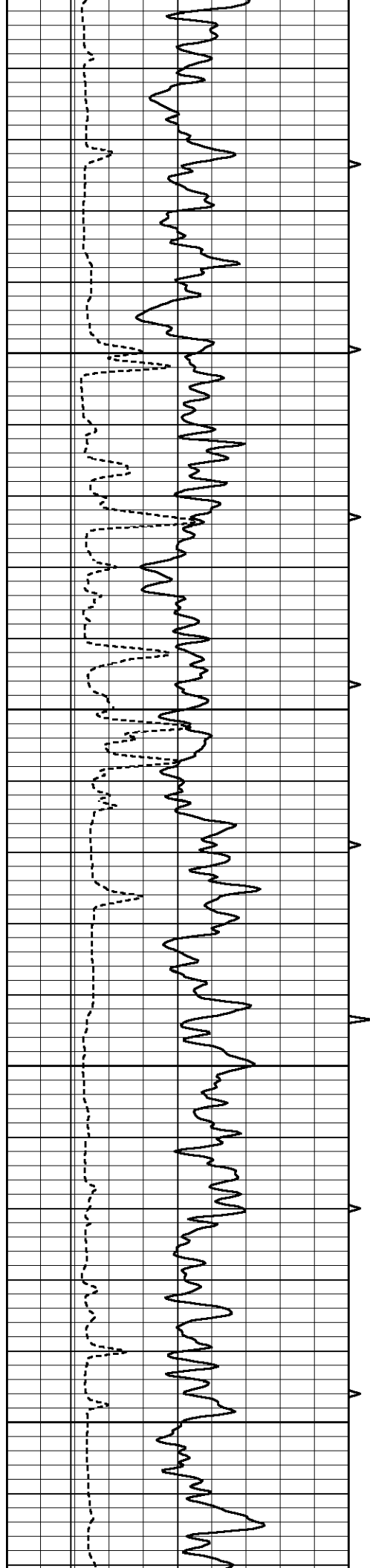


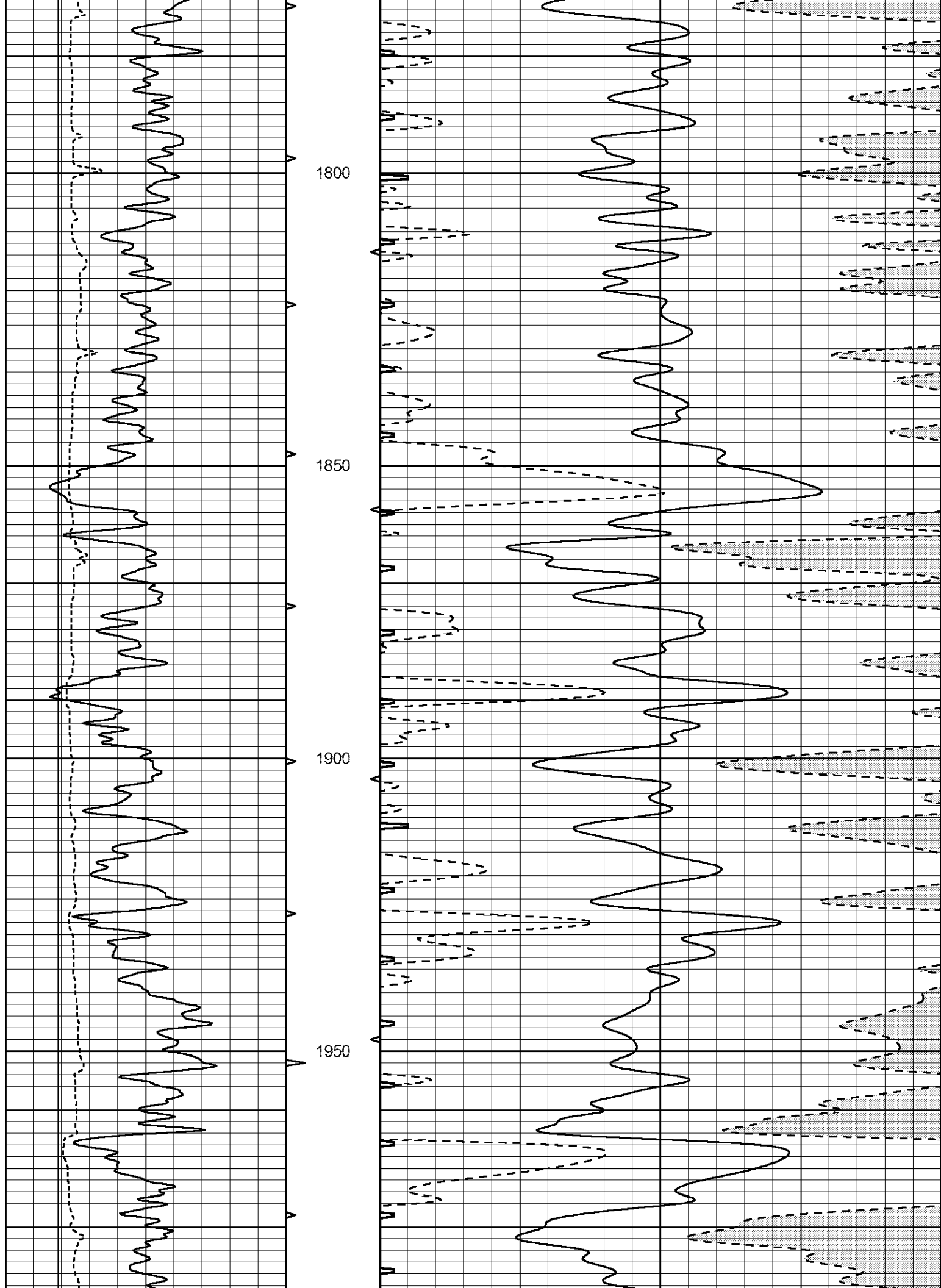


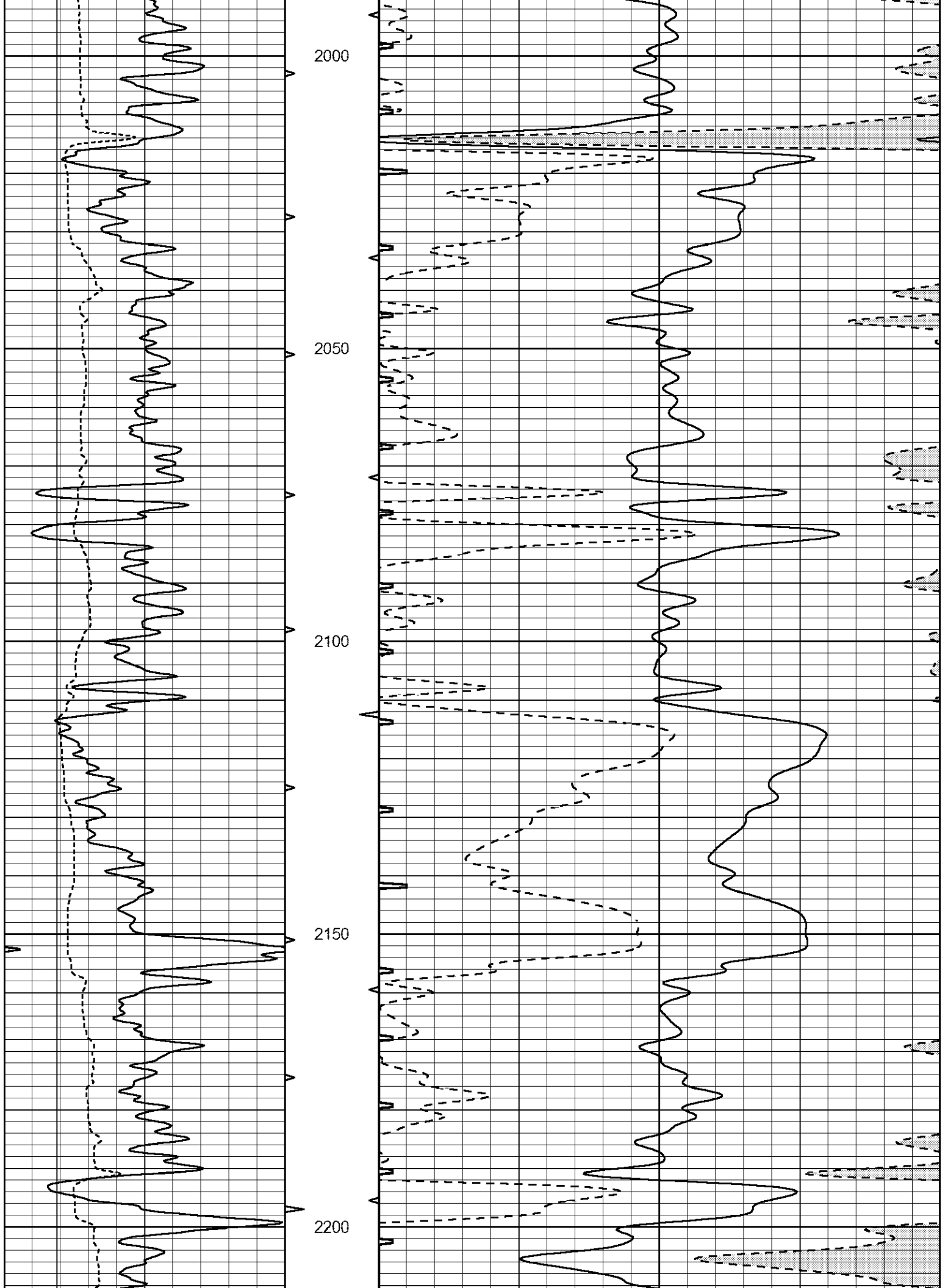


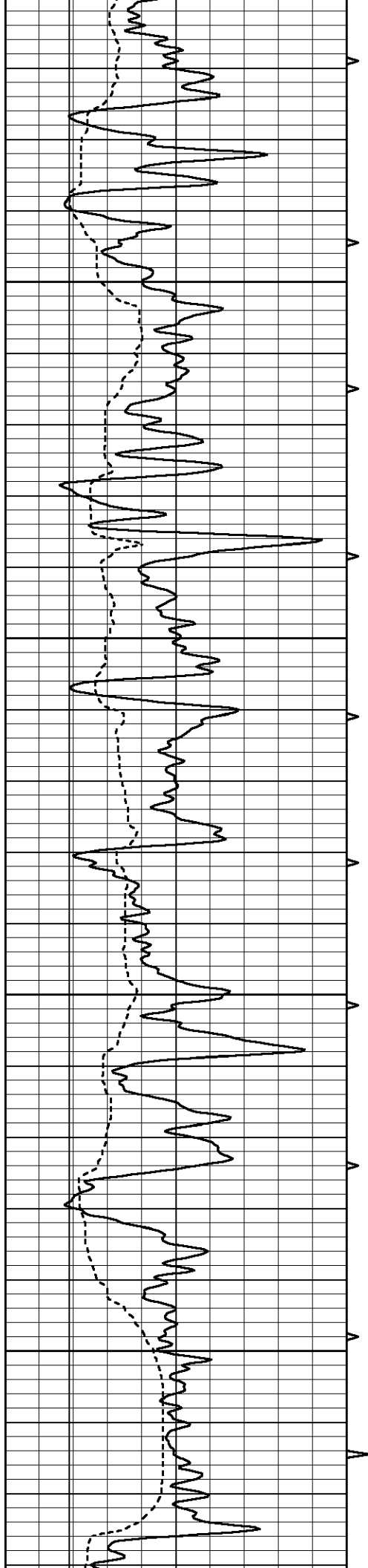










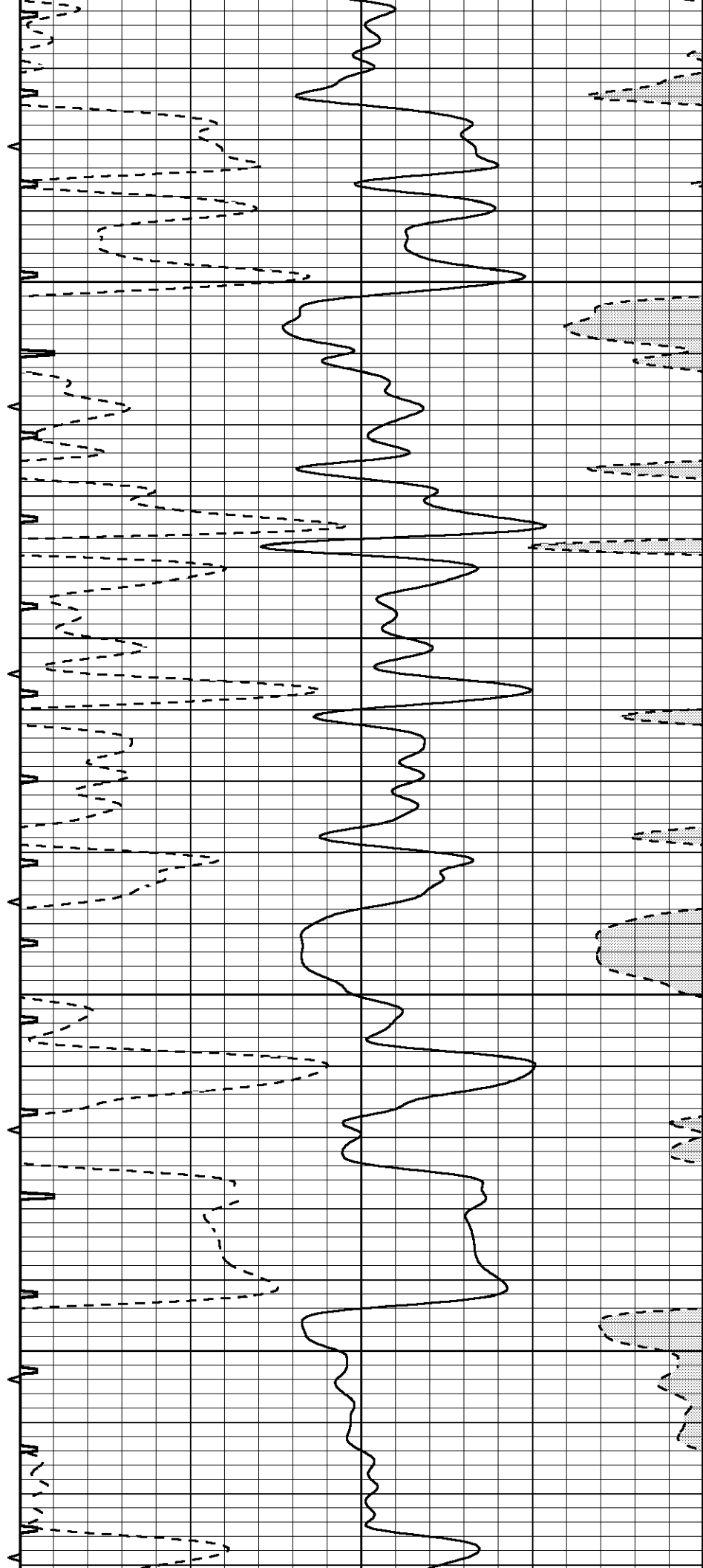


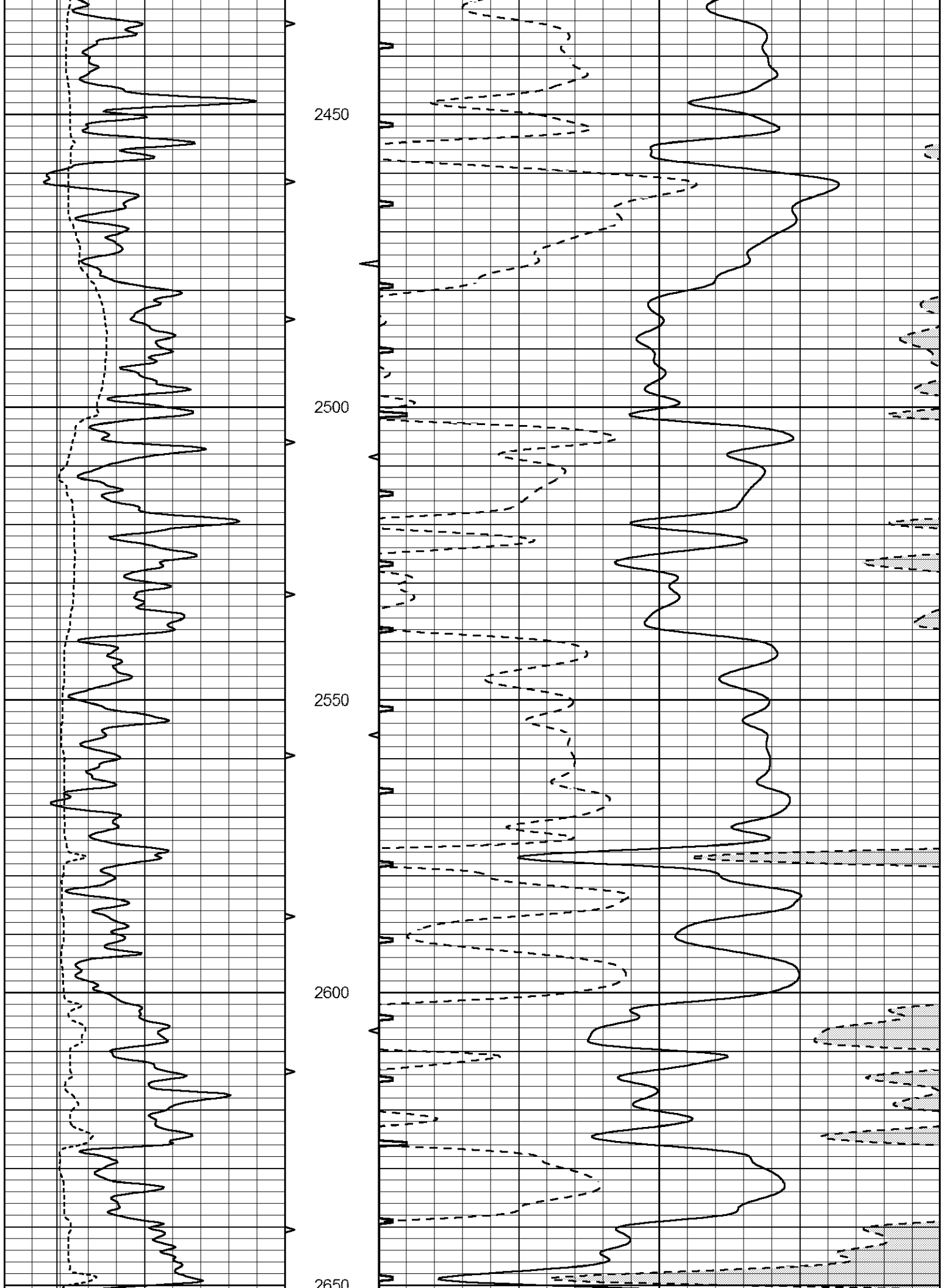
2250

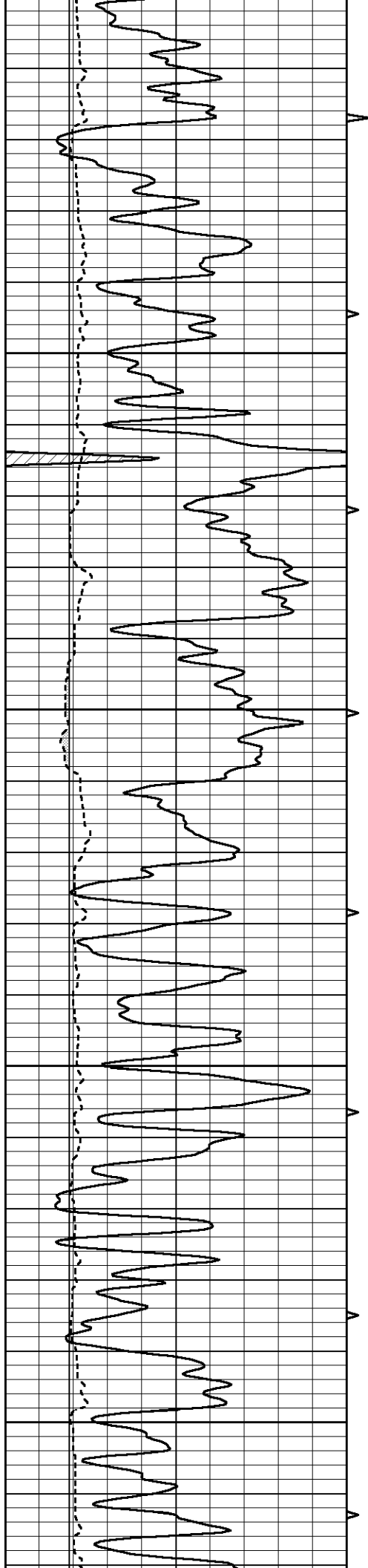
2300

2350

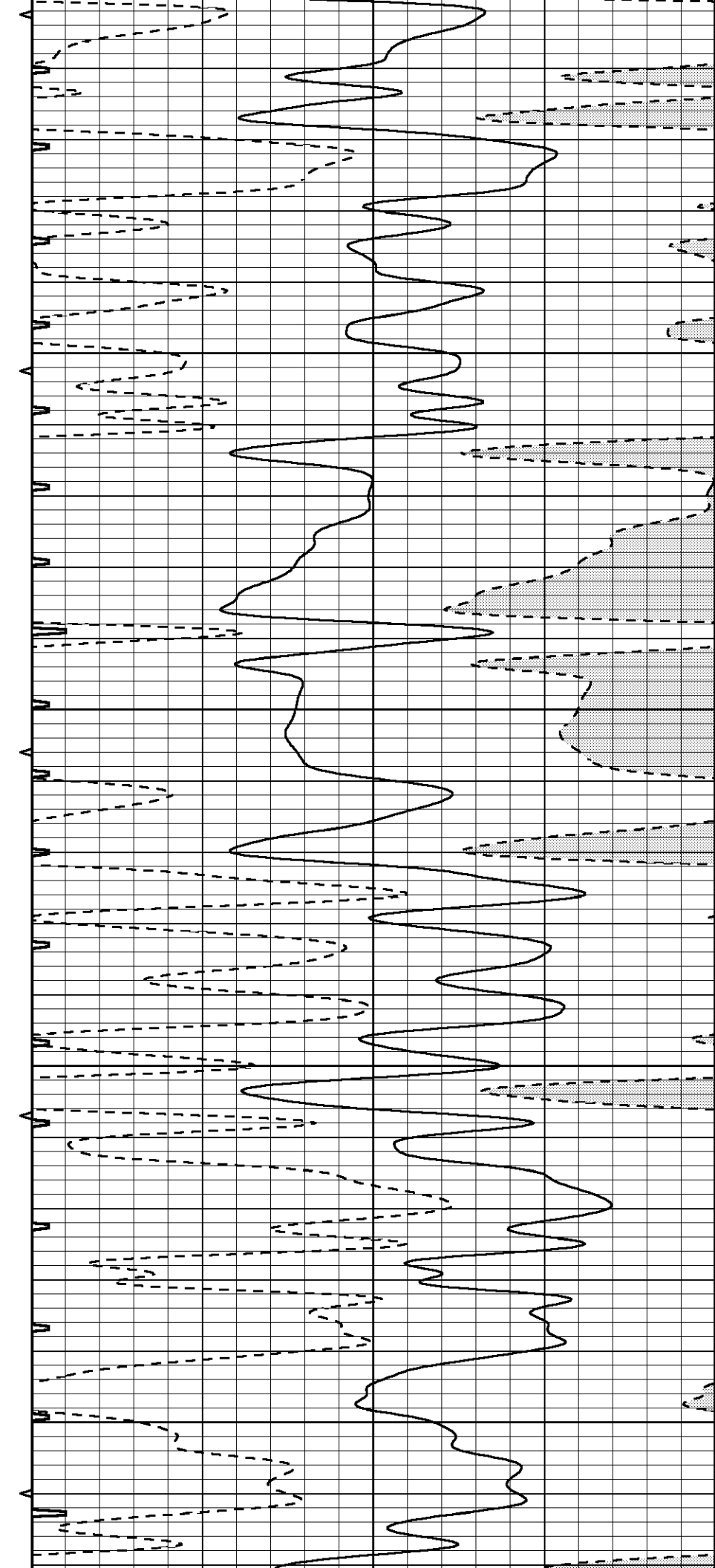
2400

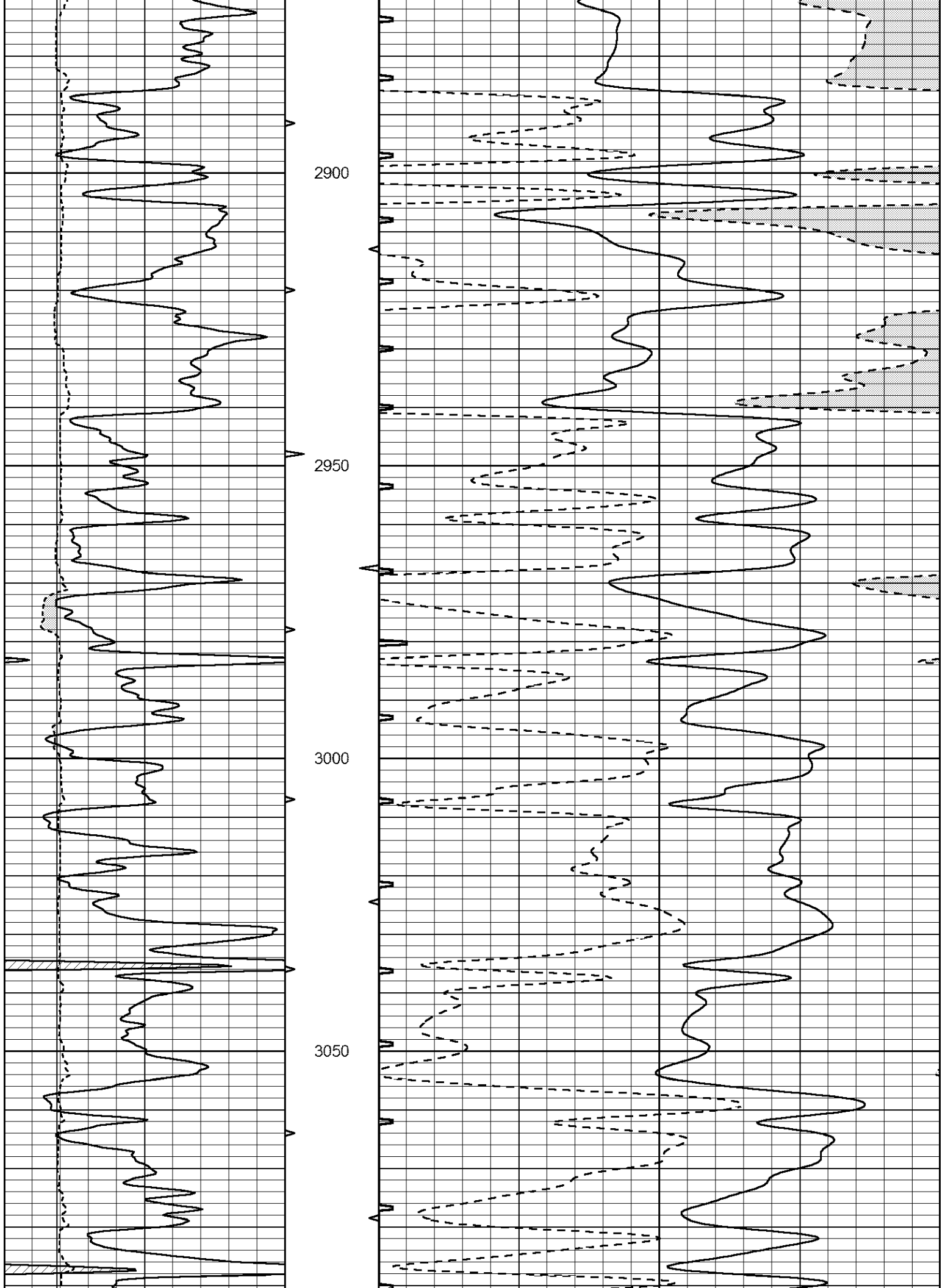


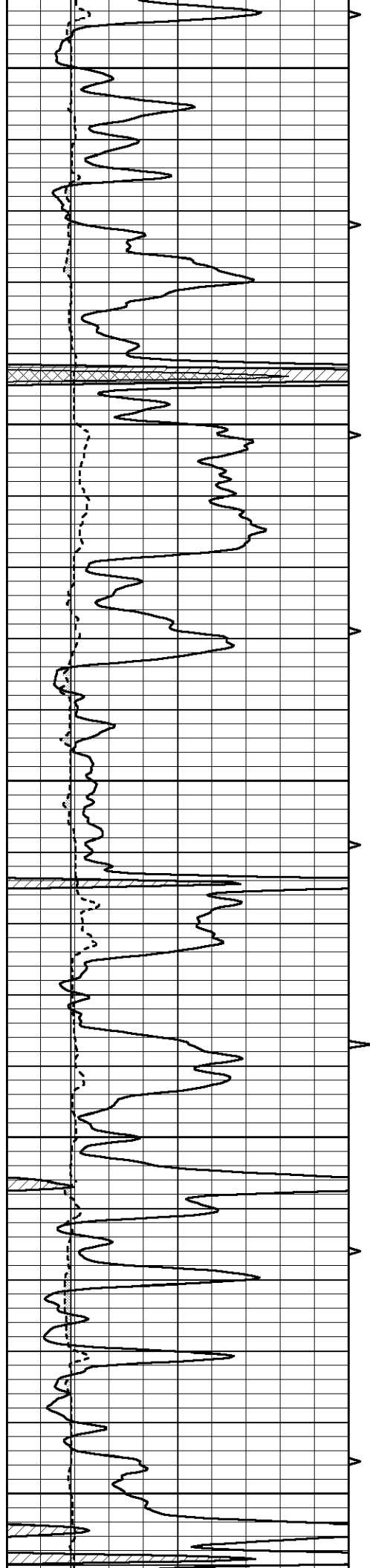




2850
2800
2750
2700







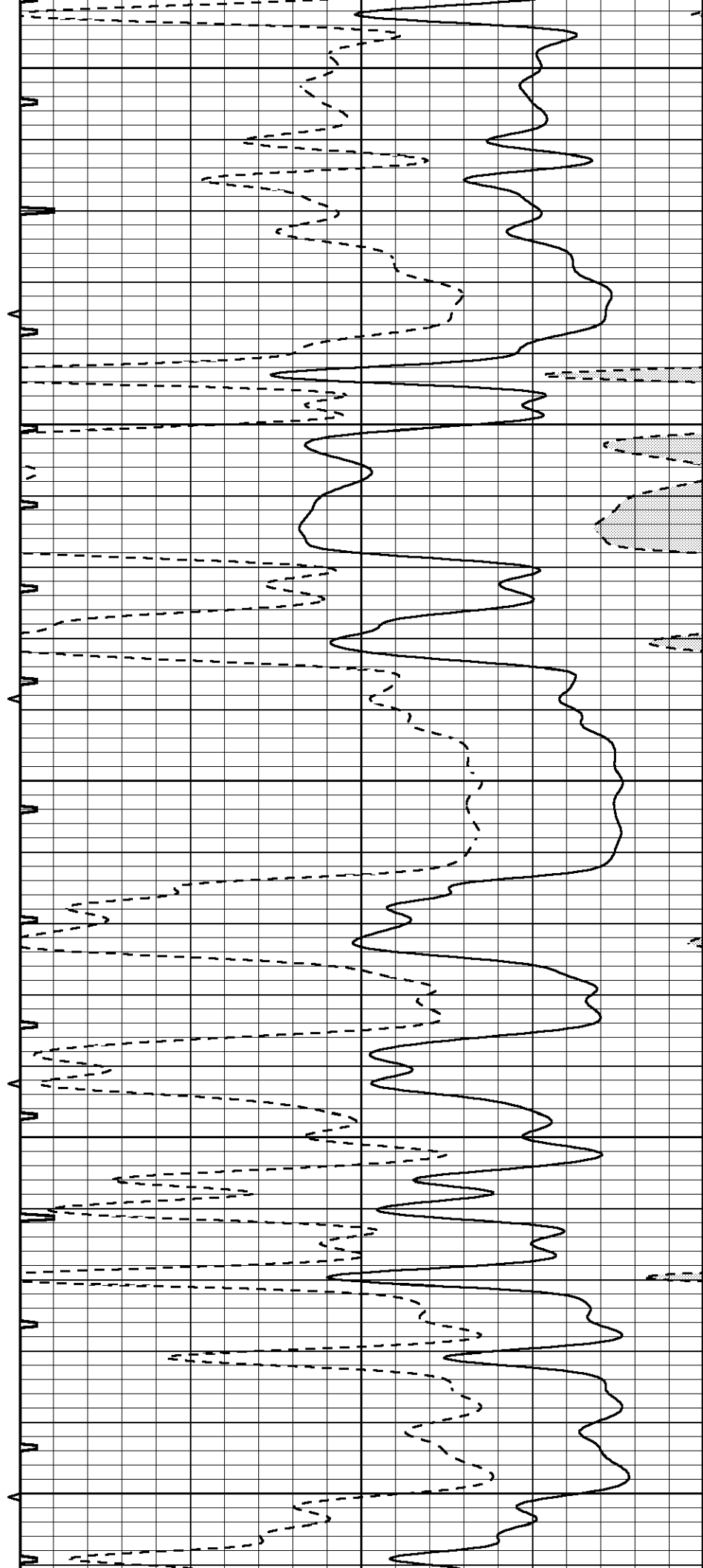
3100

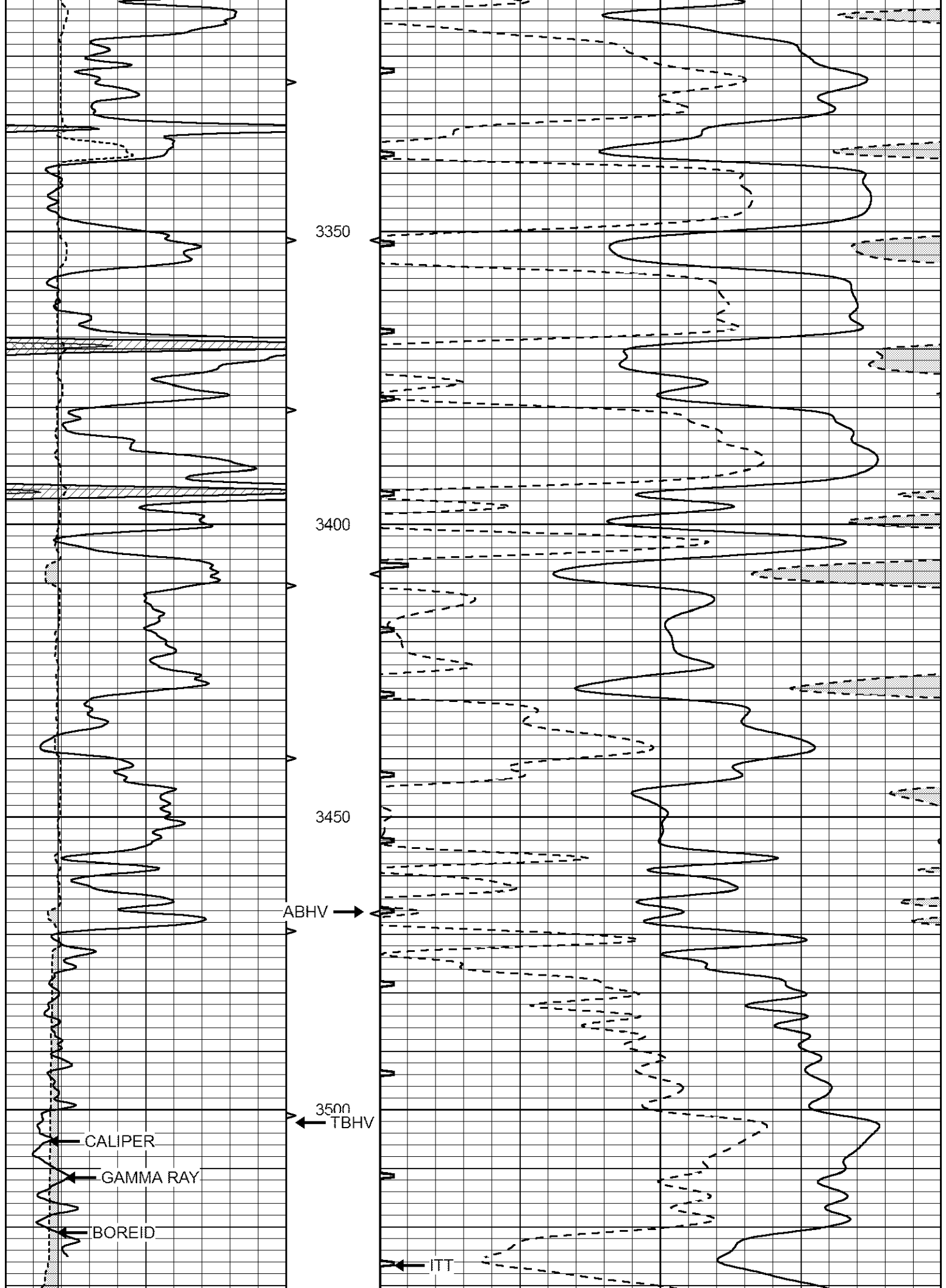
3150

3200

3250

3300





3350

3400

3450

ABHV →

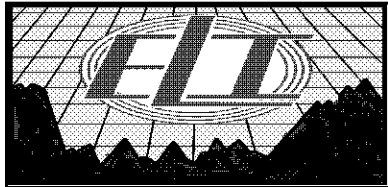
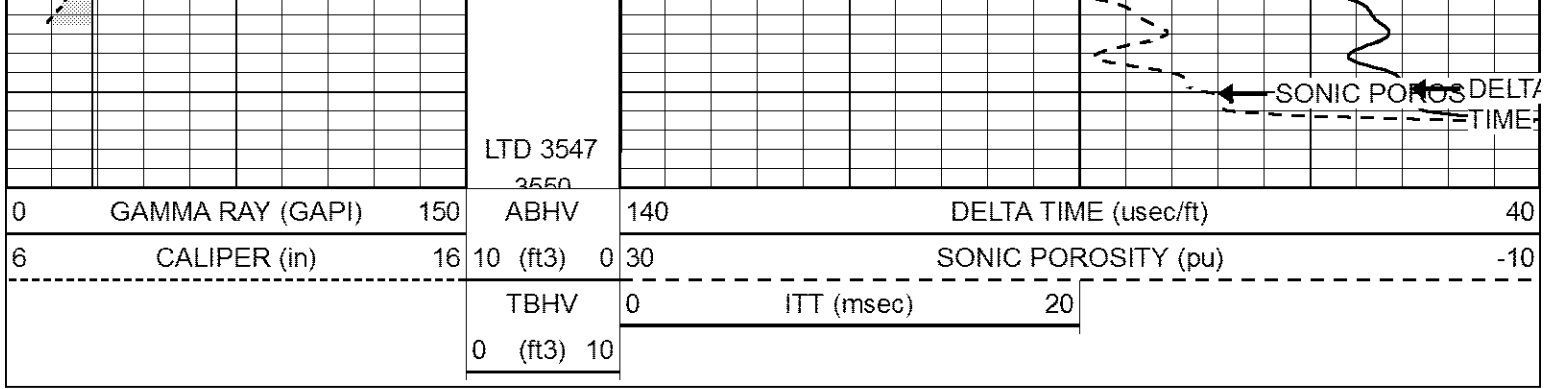
← 3500
TBHV

CALIPER

GAMMA RAY

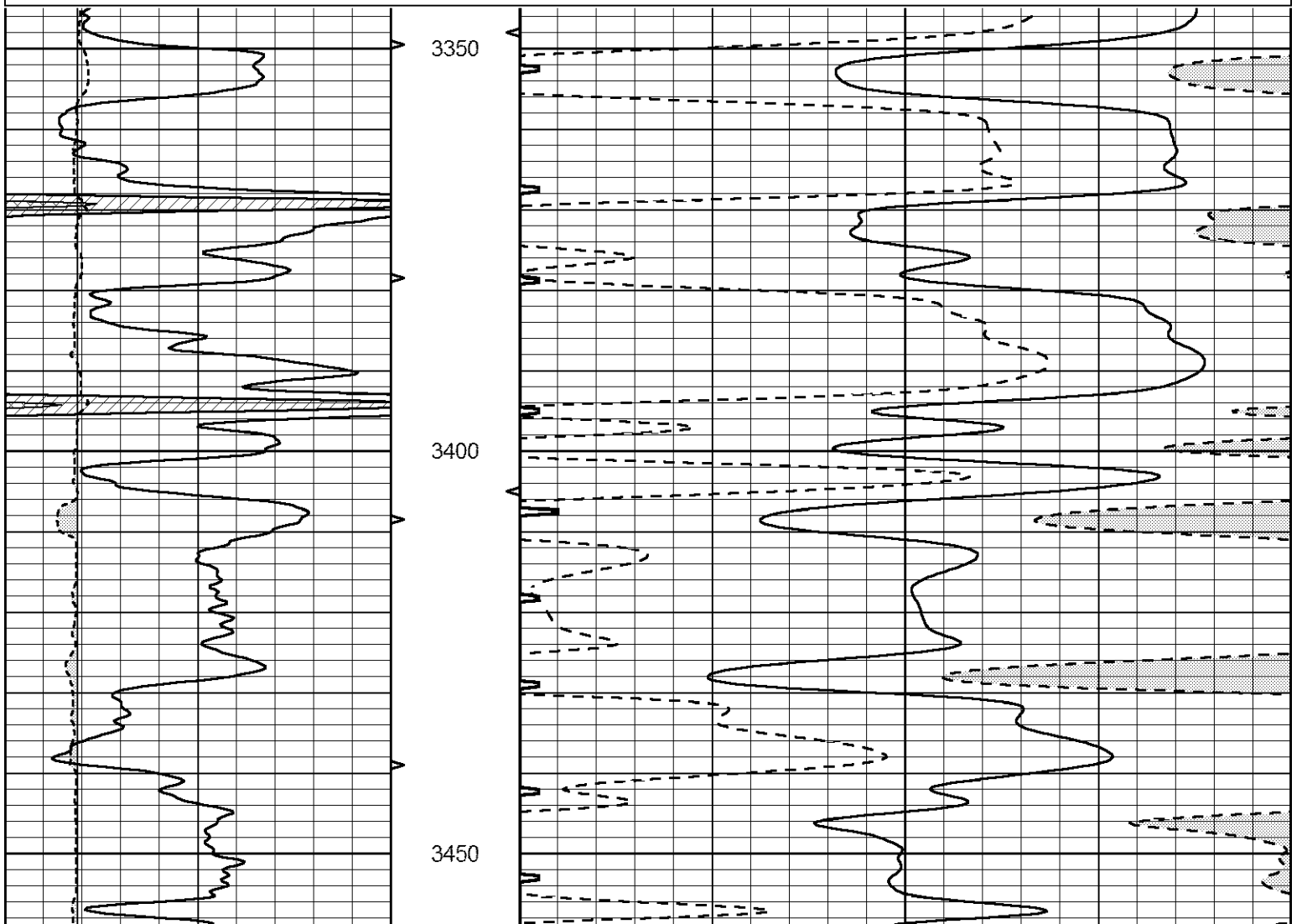
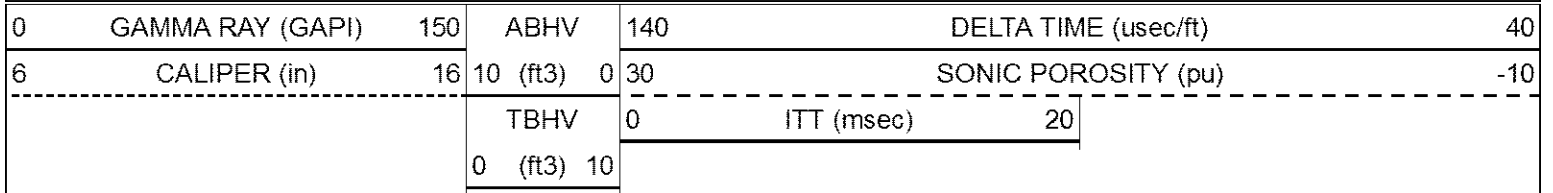
BOREID

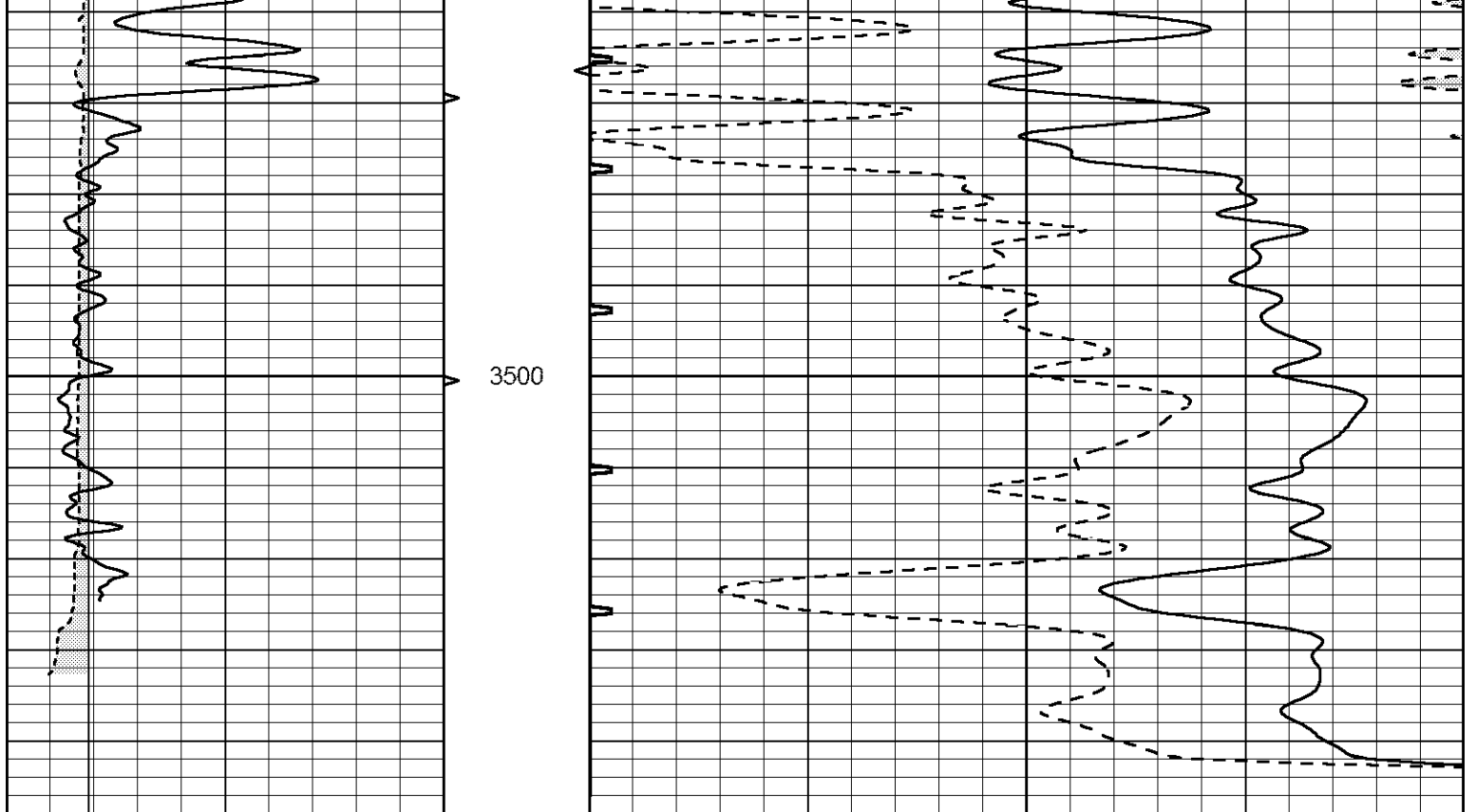
← ITT



REPEAT SECTION

Database File 2044ddn.db
 Dataset Pathname pass4.1
 Presentation Format _slt
 Dataset Creation Tue Apr 17 08:53:40 2018
 Charted by Depth in Feet scaled 1:240





0	GAMMA RAY (GAPI)	150	ABHV	140	DELTA TIME (u-sec/ft)	40
6	CALIPER (in)	16	10 (ft3)	0 30	SONIC POROSITY (pu)	-10
			TBHV	0	ITT (msec)	20
			0 (ft3)	10		