



DUAL INDUCTION LOG

Company TRANS PACIFIC OIL CORPORATION
 Well ODLE A#1-36
 Field WILDCAT
 County ROOKS State KANSAS

Location: 1635' FSL & 1812' FWL
 API #: 15-163-24359-00-00
 SEC 36 TWP 6S RGE 19W
 Permanent Datum GROUND LEVEL Elevation 1957
 Log Measured From KELLY BUSHING 8' A.G.L
 Drilling Measured From KELLY BUSHING
 Other Services CDL/CNL/MEL SONIC
 Elevation K.B. 1965 D.F. 1963 G.L. 1957

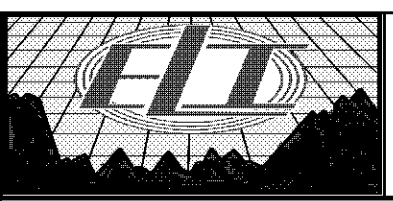
Date	4/17/18
Run Number	ONE
Depth Driller	3645
Depth Logger	3647
Bottom Logged Interval	3645
Top Log Interval	50
Casing Driller	8 5/8" @ 219
Casing Logger	219
Bit Size	7 7/8
Type Fluid in Hole	CHEMICAL MUD
Density / Viscosity	9.1/58
PH / Fluid Loss	10.5/6.8
Source of Sample	FLOWLINE
Rm @ Meas. Temp	1.6 @ 52F
Rmt @ Meas. Temp	1.2 @ 52F
Rmc @ Meas. Temp	1.92 @ 52F
Source of Rmf / Rmc	MEASUREMENT
Rm @ BHT	.74 @ 112F
Time Circulation Stopped	2 HOURS
Time Logger on Bottom	////
Maximum Recorded Temperature	112F
Equipment Number	3802
Location	HAYS, KANSAS
Recorded By	GUS PFANENSTIEL
Witnessed By	NICK HIXON

<<< Fold Here >>>

All interpretations are opinions based on inferences from electrical or other measurements and we cannot and do not guarantee the accuracy or correctness of any interpretation, and we shall not, except in the case of gross or willful negligence on our part, be liable or responsible for any loss, costs, damages, or expenses incurred or sustained by anyone resulting from any interpretation made by any of our officers, agents or employees. These interpretations are also subject to our general terms and conditions set out in our current Price Schedule.

Comments

THANK YOU FOR USING ELI WIRELINE SERVICES, HAYS, KS. (785) 628-6395
 DIRECTIONS
 STOCKTON 3 NORTH AND 6 WEST

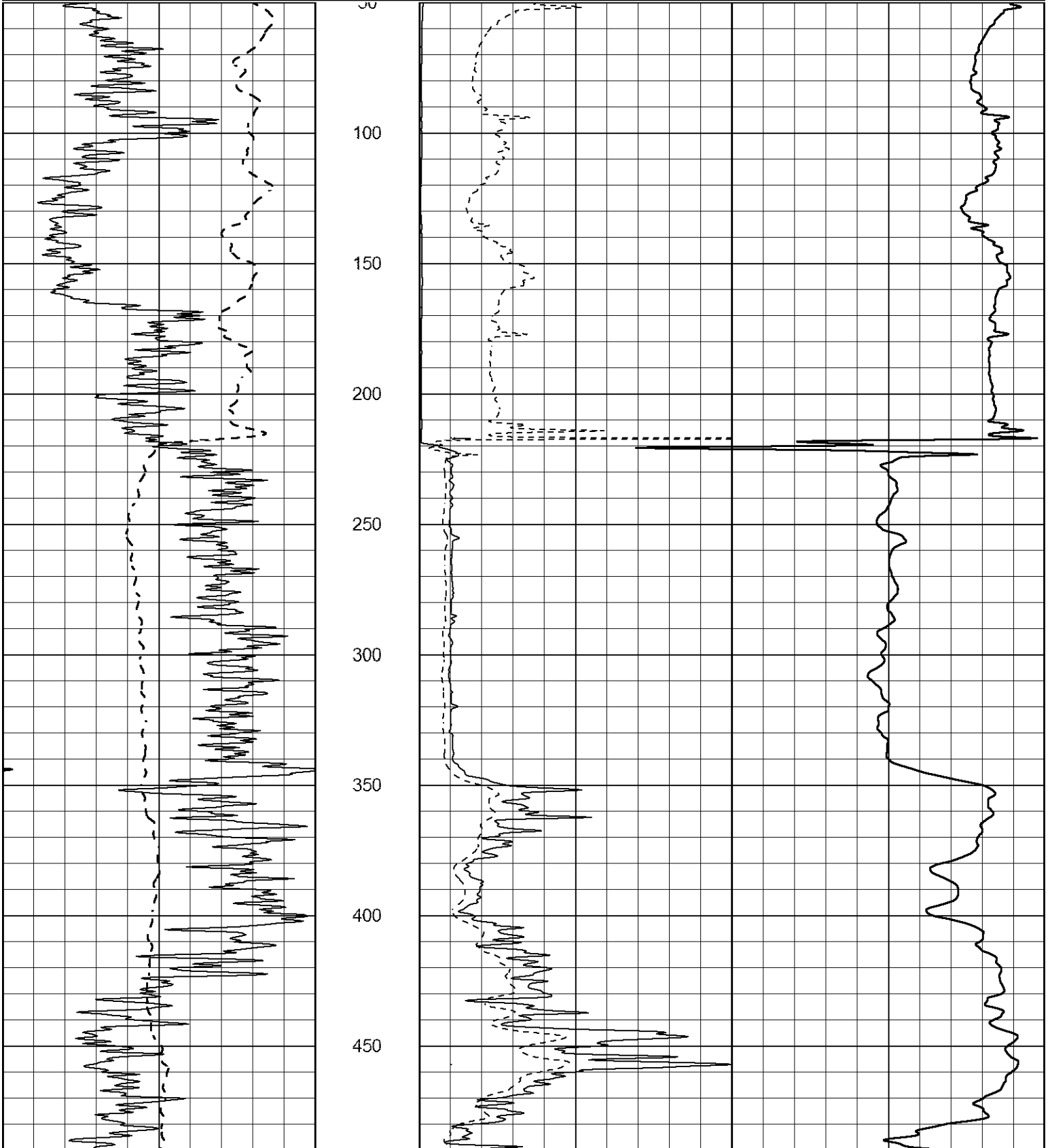


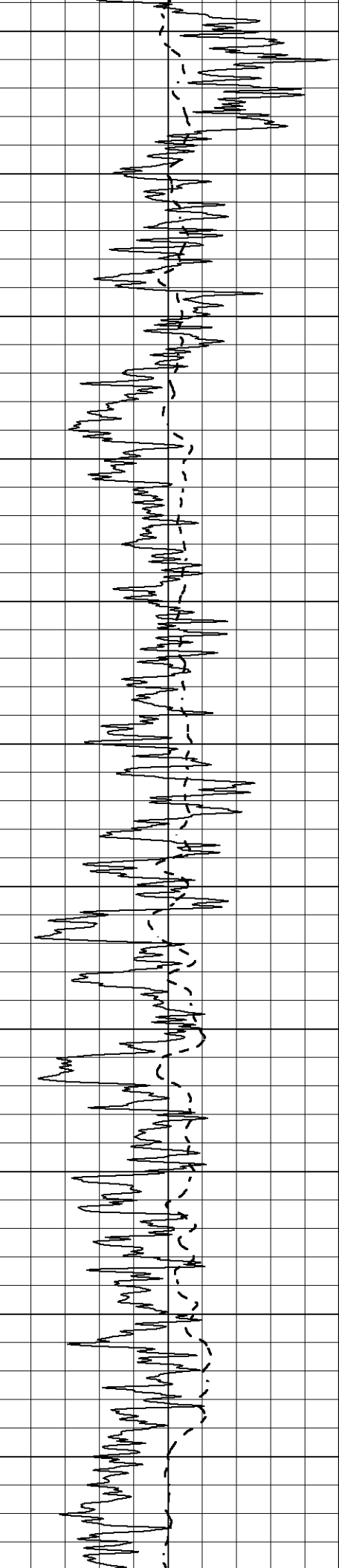
MAIN PASS

Database File 2044ddn.db
 Dataset Pathname pass3.1
 Presentation Format _dil2
 Dataset Creation Tue Apr 17 07:53:02 2018
 Charted by Depth in Feet scaled 1:600

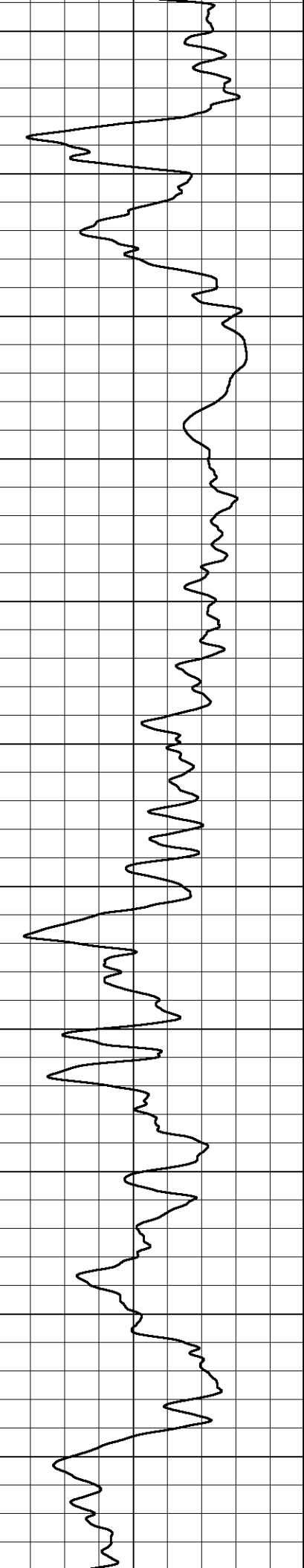
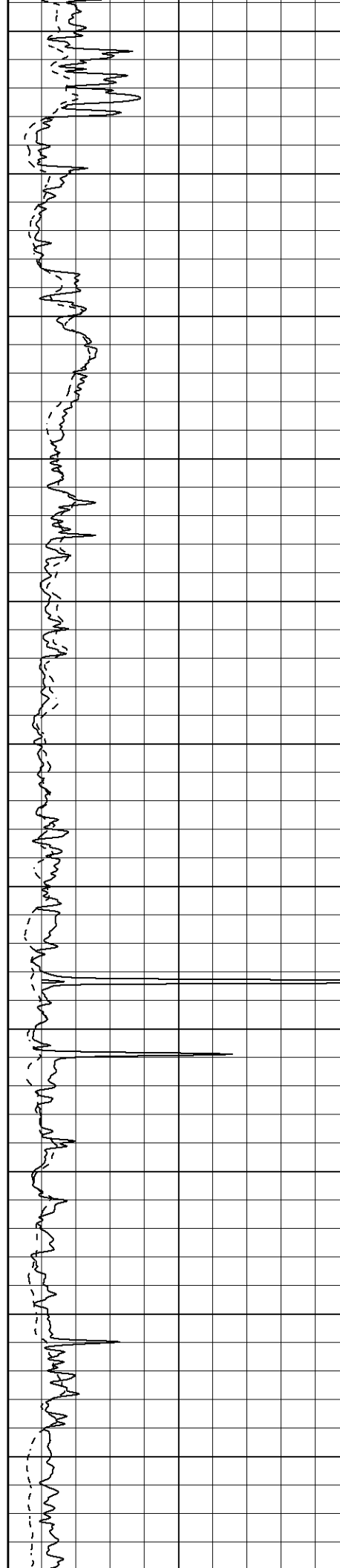
0 Gamma Ray (GAPI) 150
 -100 SP (mV) 100

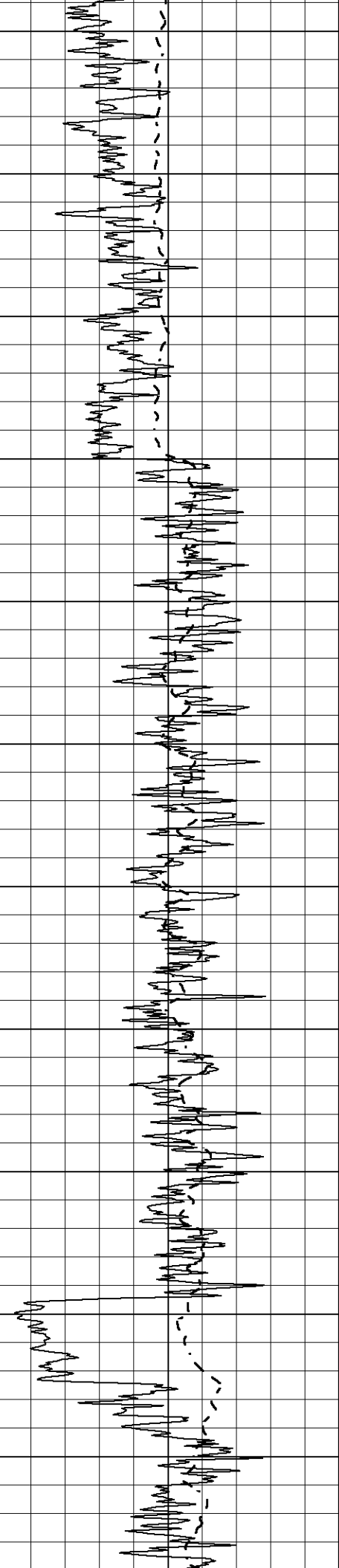
1000 CILD (mmho/m) 0
 0 RLL3 (Ohm-m) 50
 0 Deep Induction (Ohm-m) 50
 50 RILD X10 (Ohm-m) 500
 50 RLL3 X10 (Ohm-m) 500



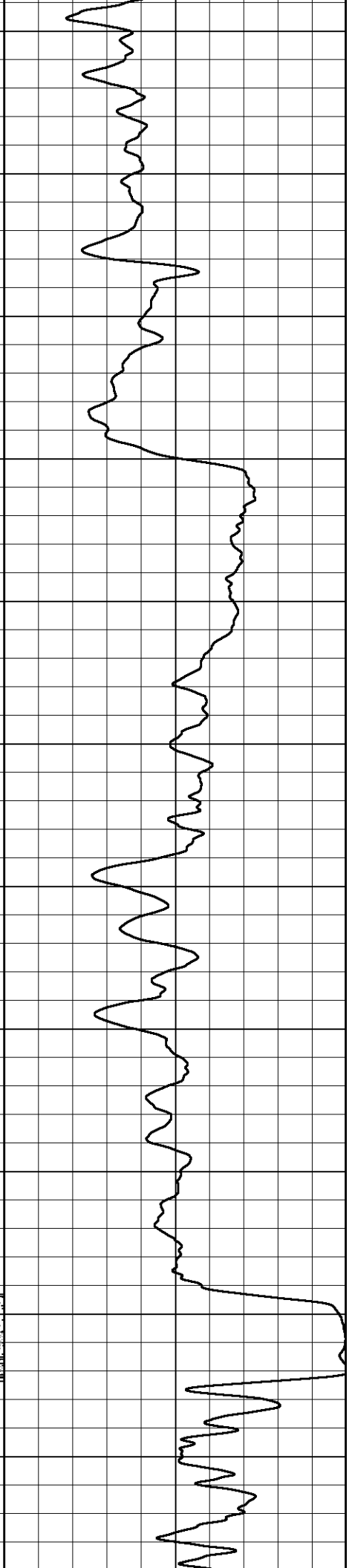
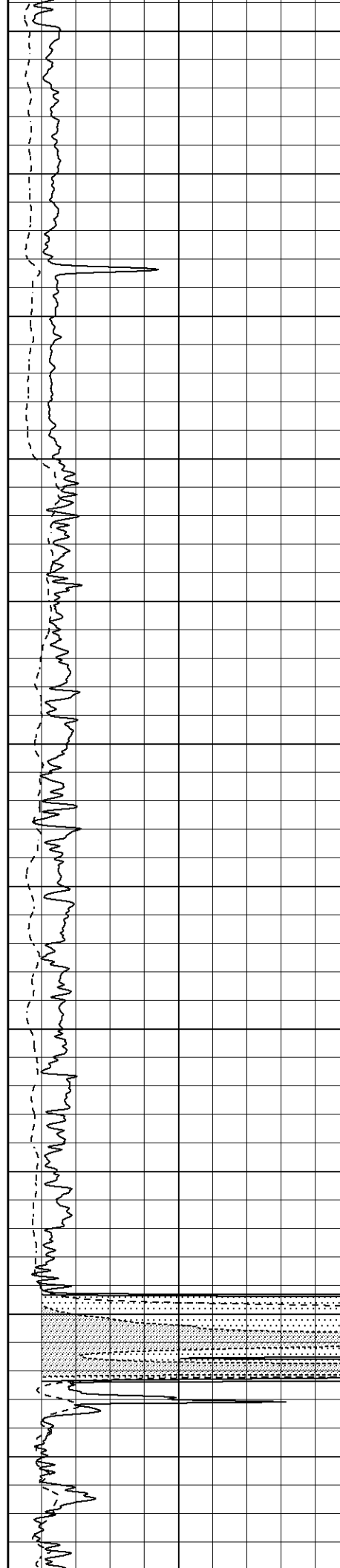


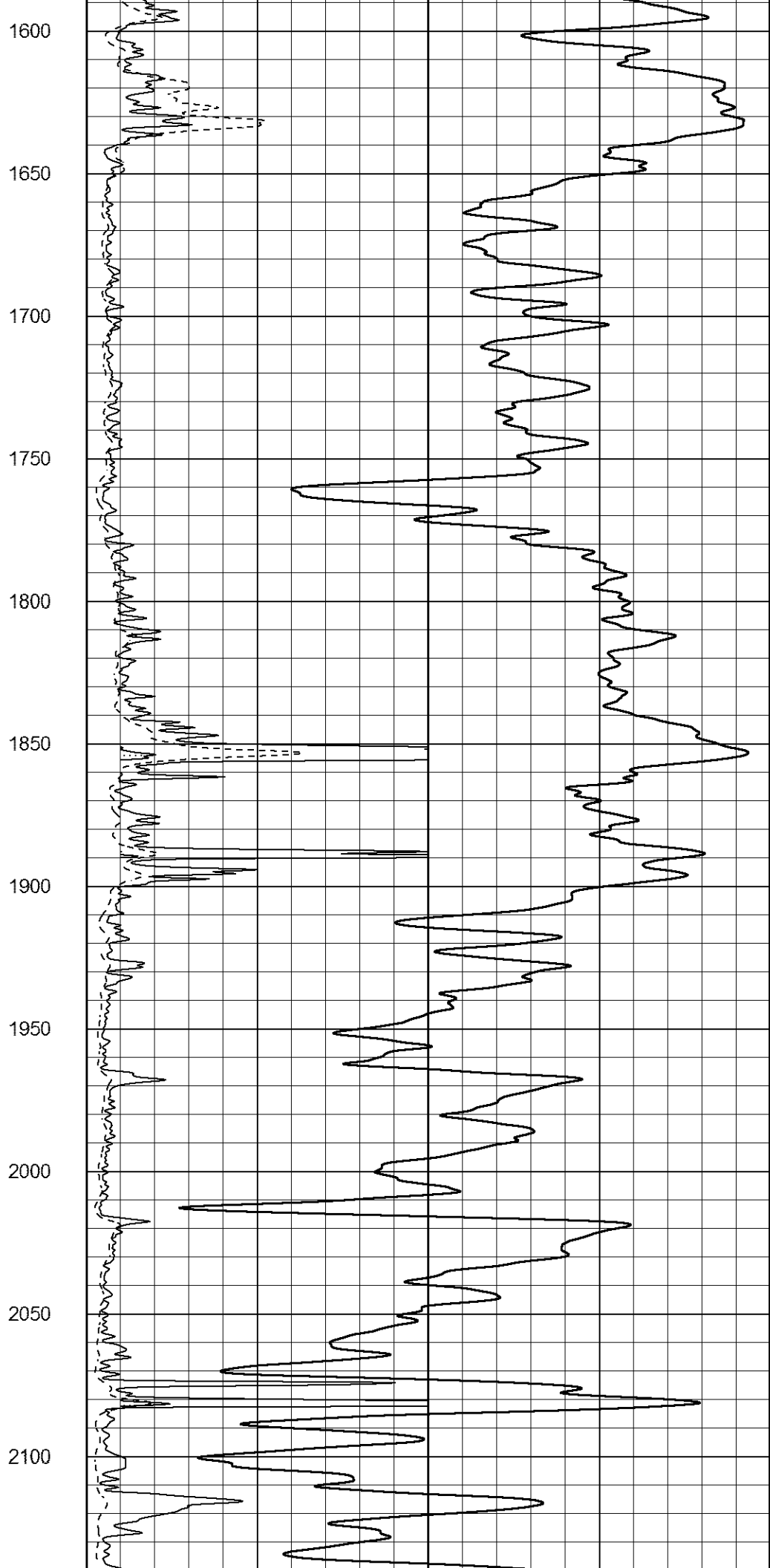
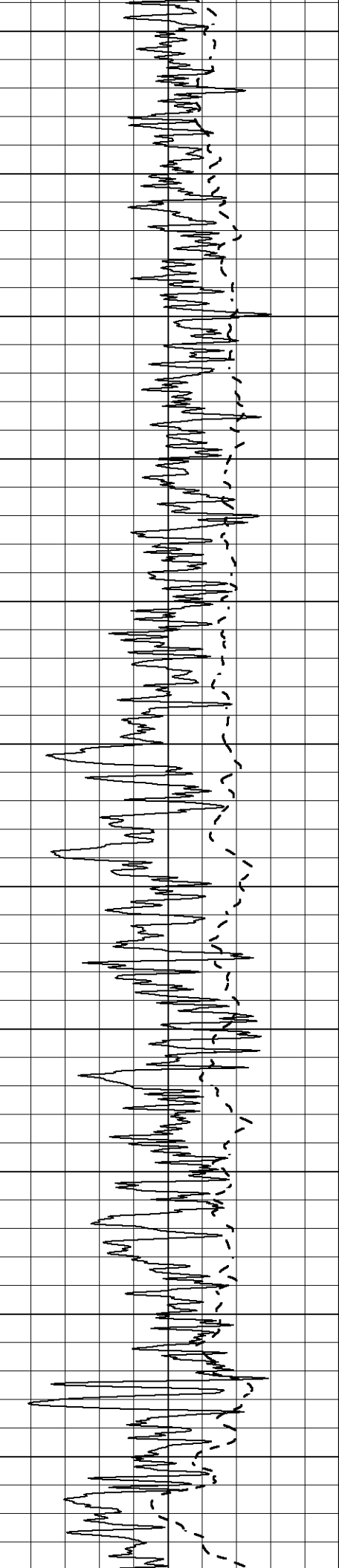
500
550
600
650
700
750
800
850
900
950
1000

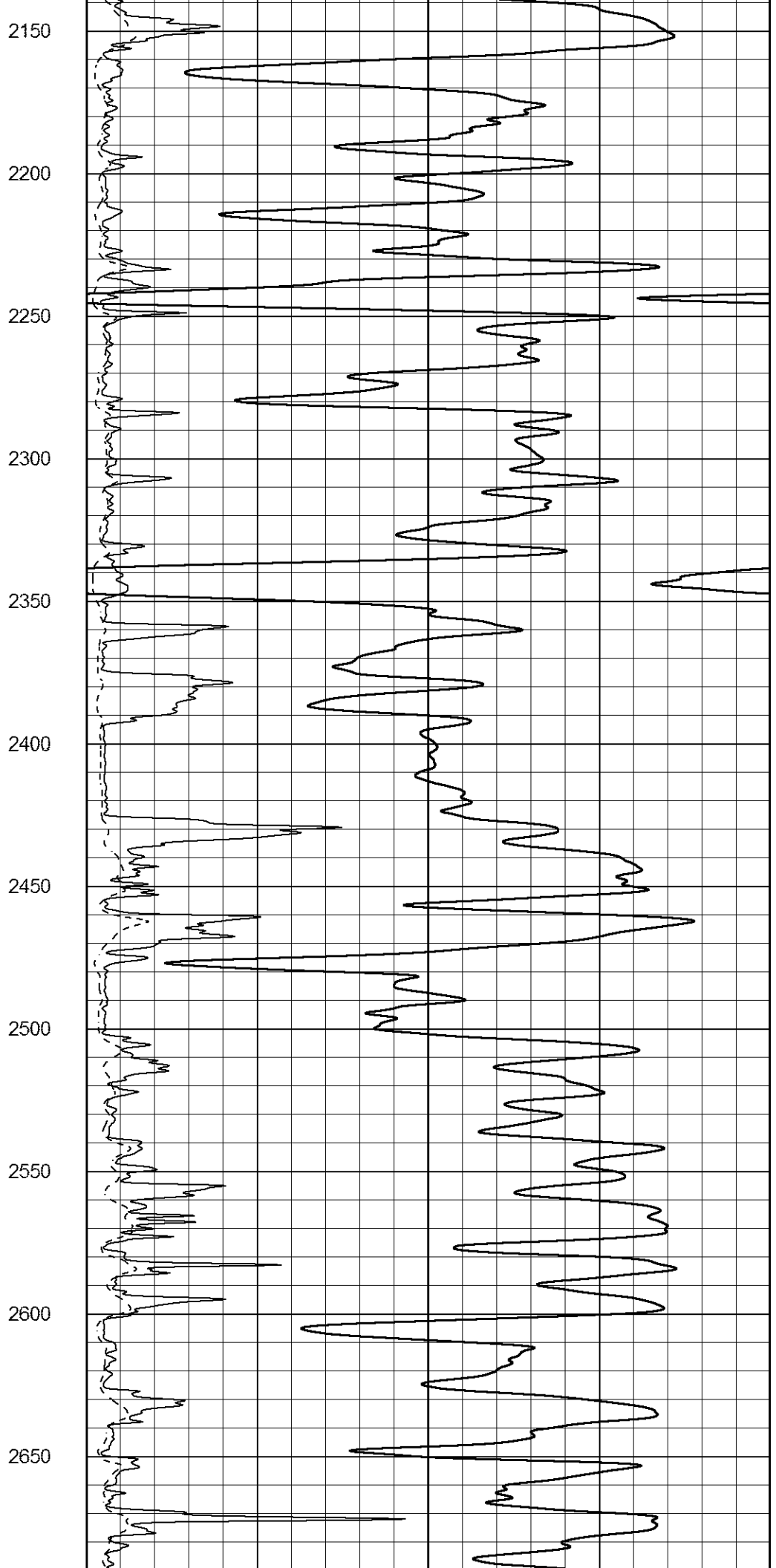
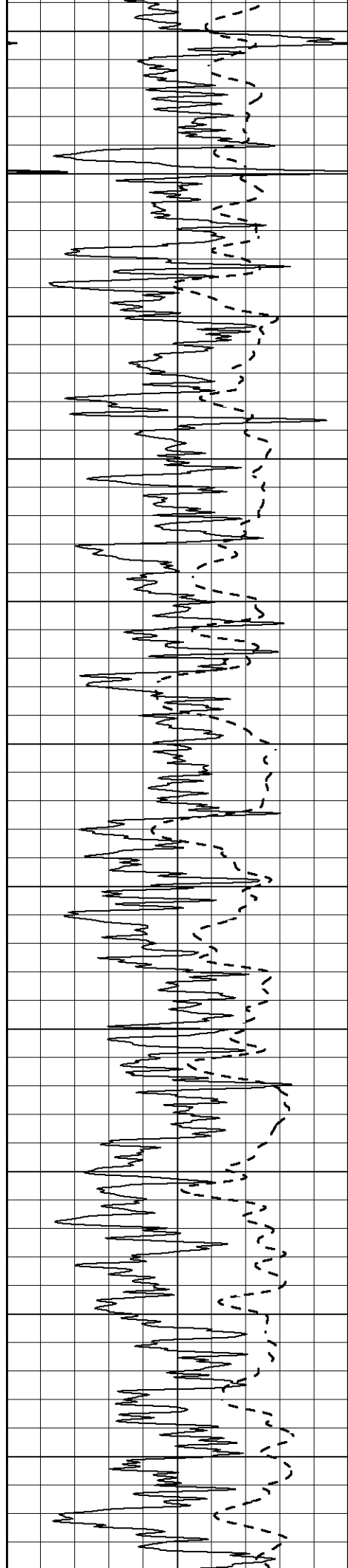


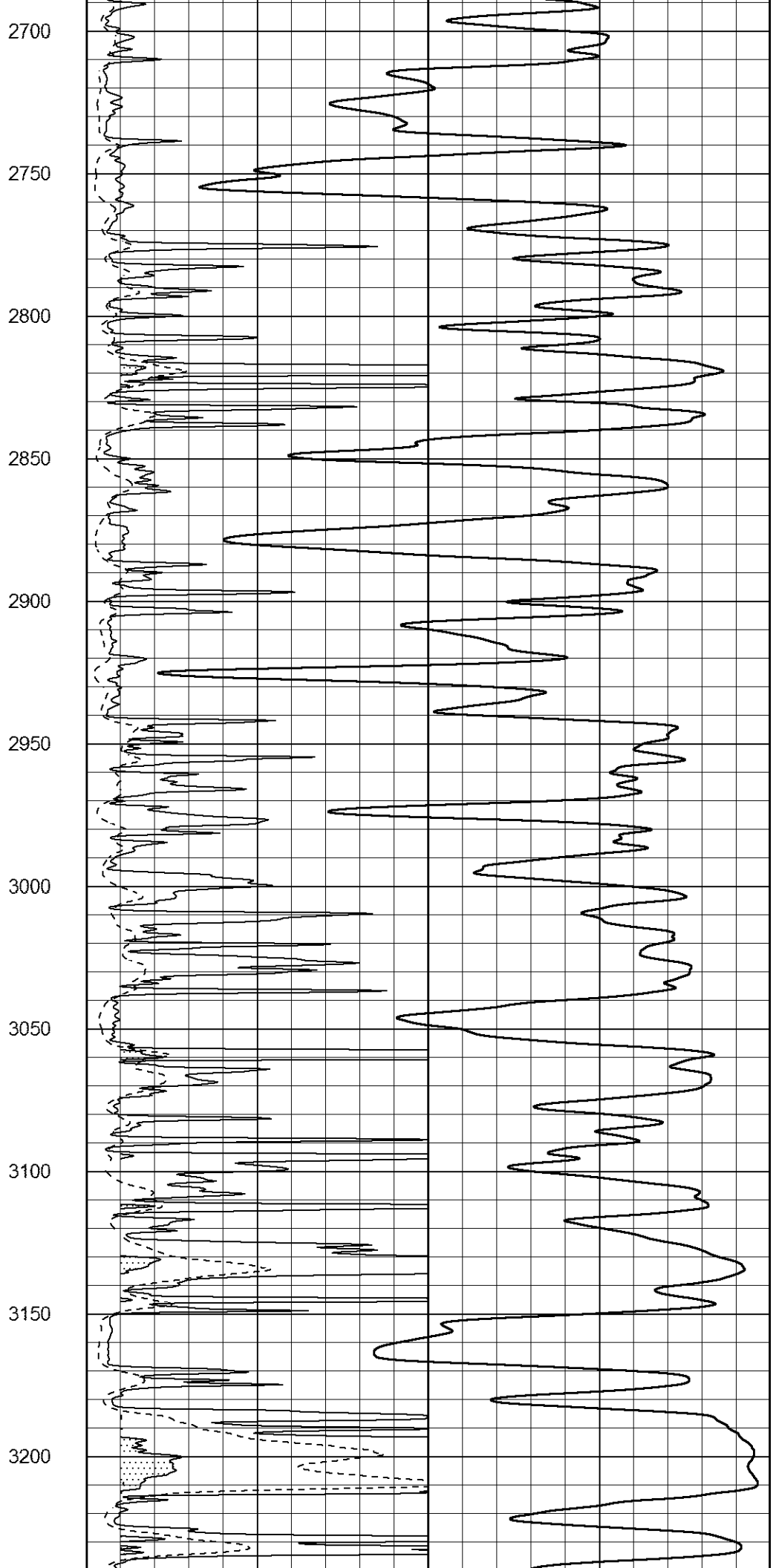
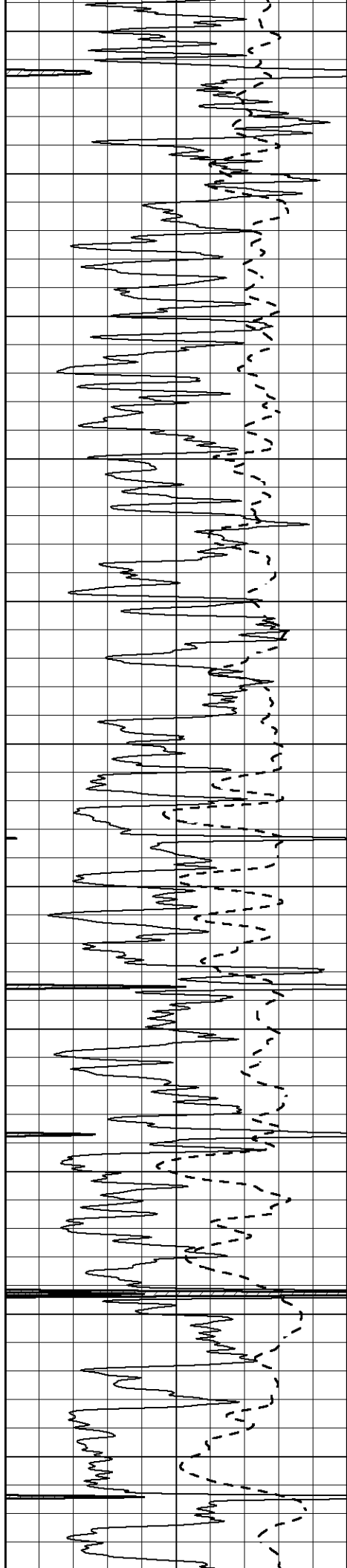


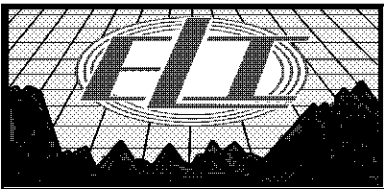
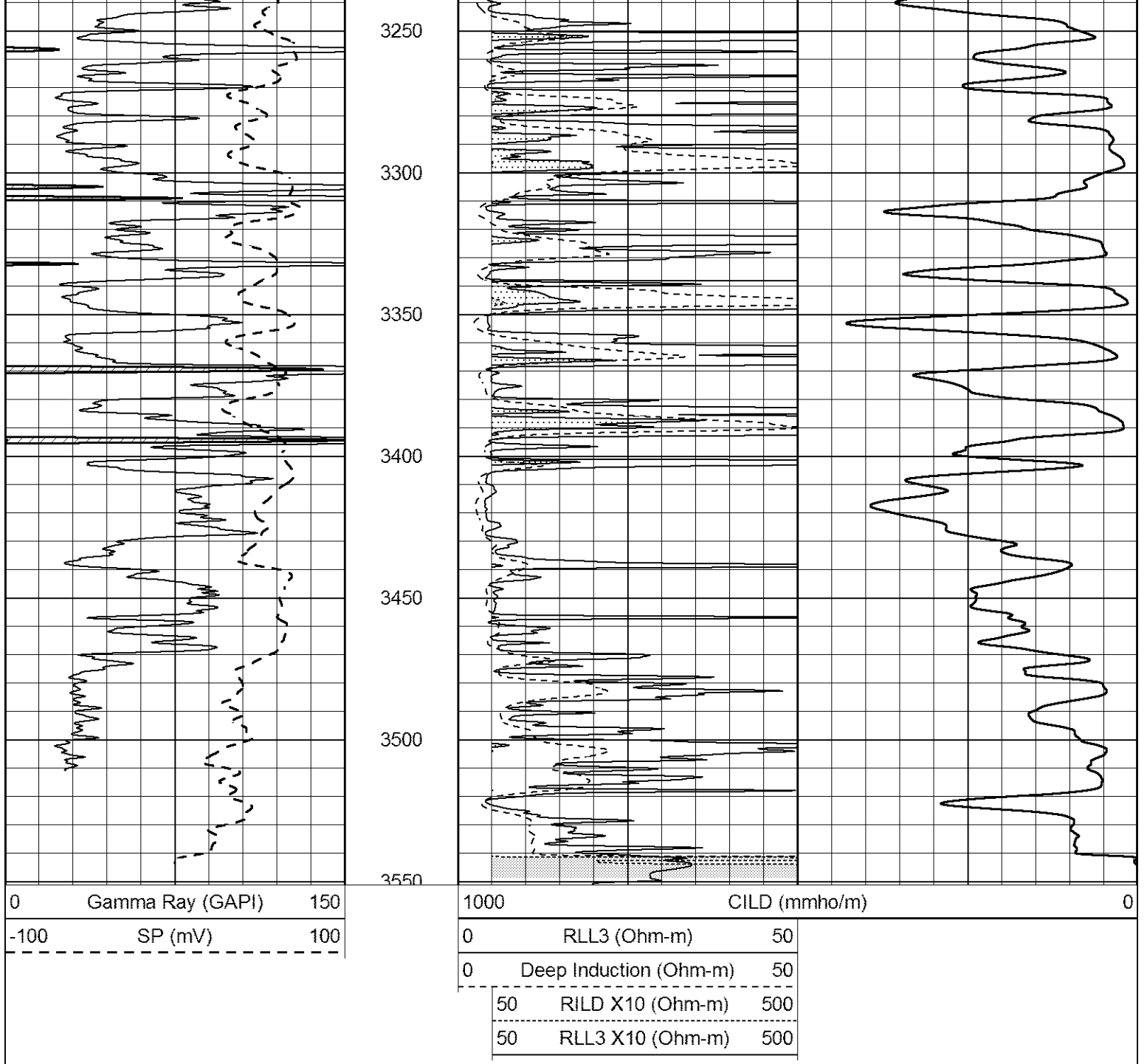
1050
1100
1150
1200
1250
1300
1350
1400
1450
1500
1550







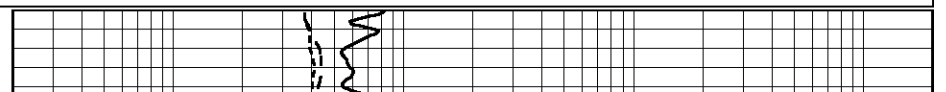
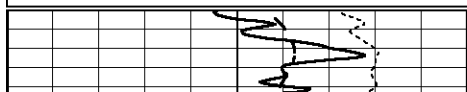


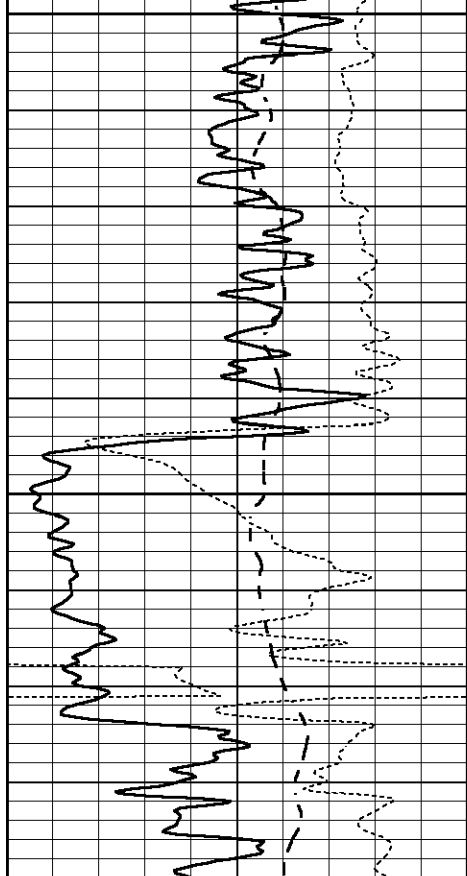


MAIN PASS

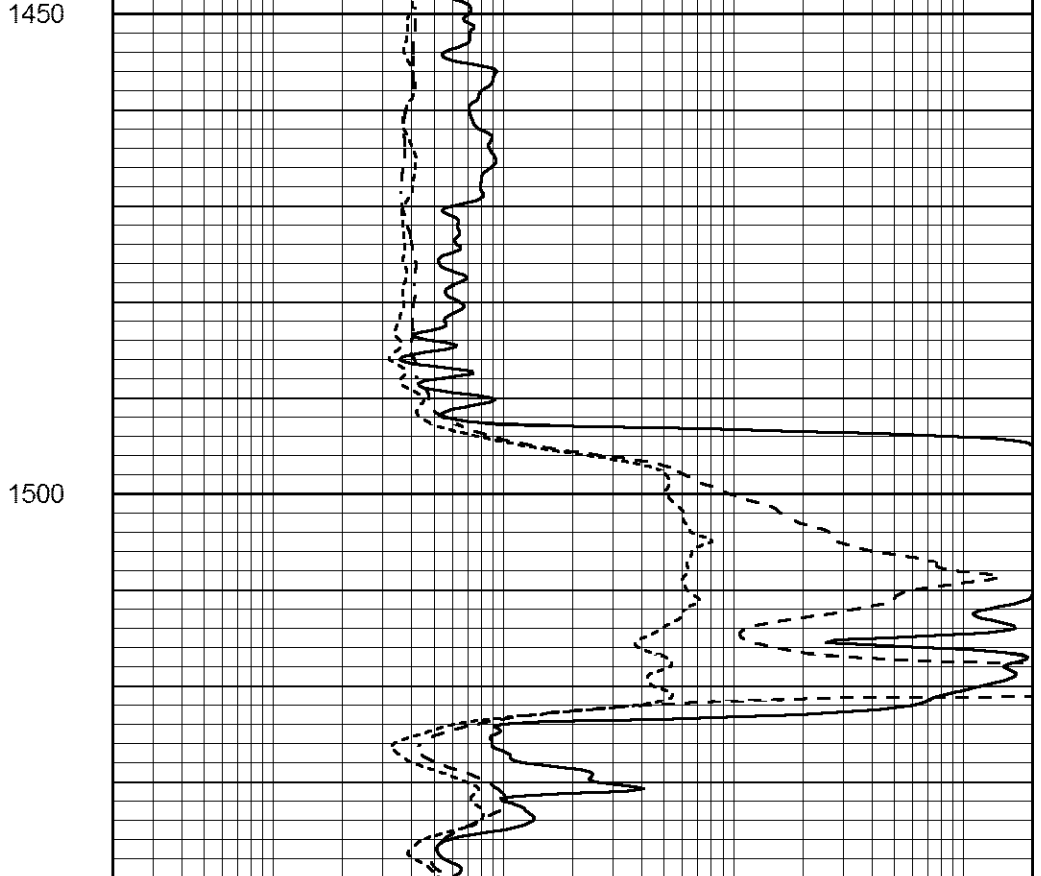
Database File 2044ddn.db
 Dataset Pathname pass3.1
 Presentation Format _dil
 Dataset Creation Tue Apr 17 07:53:02 2018
 Charted by Depth in Feet scaled 1:240

0	GAMMA RAY (GAPI)	150	0.2	SHALLOW GUARD (Ohm-m)	2000
-250	Rxo/Rt	50	0.2	MEDIUM INDUCTION (Ohm-m)	2000
-100	SP (mV)	100	0.2	DEEP INDUCTION (Ohm-m)	2000

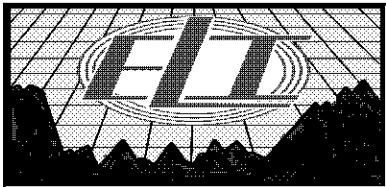




0	GAMMA RAY (GAPI)	150
-250	Rxo/Rt	50
-100	SP (mV)	100



0.2	SHALLOW GUARD (Ohm-m)	2000
0.2	MEDIUM INDUCTION (Ohm-m)	2000
0.2	DEEP INDUCTION (Ohm-m)	2000

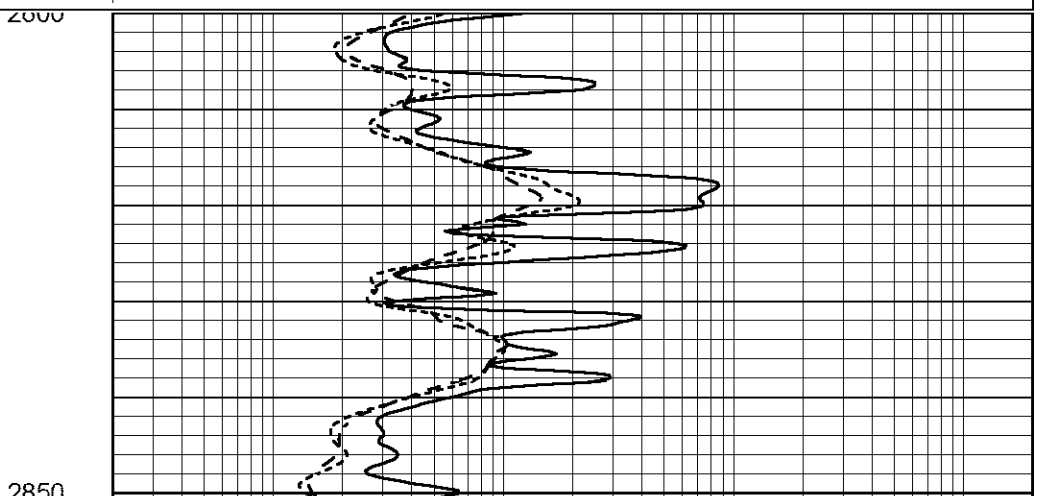
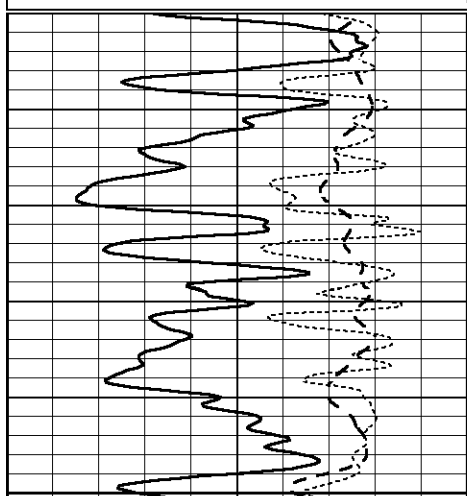


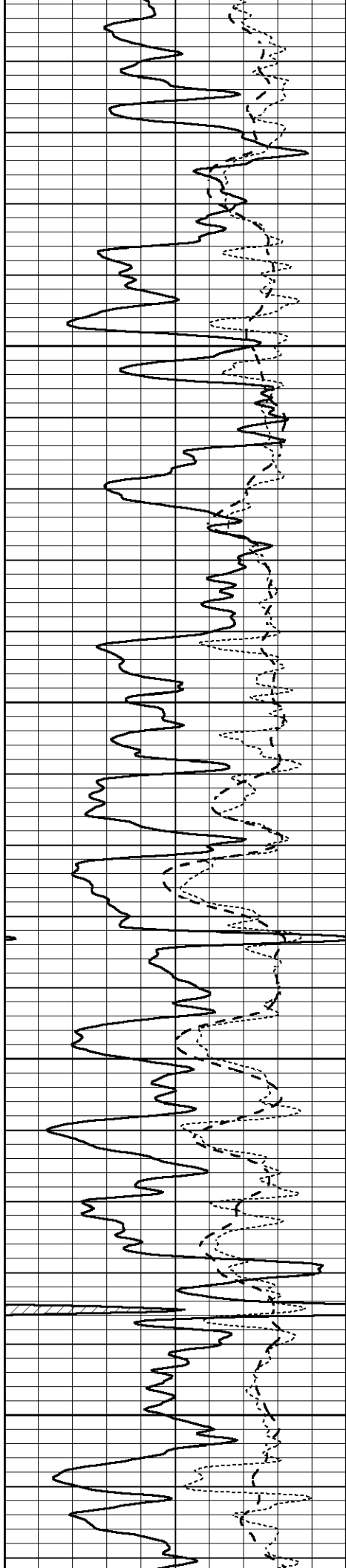
MAIN PASS

Database File 2044ddn.db
 Dataset Pathname pass3.1
 Presentation Format _dil
 Dataset Creation Tue Apr 17 07:53:02 2018
 Charted by Depth in Feet scaled 1:240

0	GAMMA RAY (GAPI)	150
-250	Rxo/Rt	50
-100	SP (mV)	100

0.2	SHALLOW GUARD (Ohm-m)	2000
0.2	MEDIUM INDUCTION (Ohm-m)	2000
0.2	DEEP INDUCTION (Ohm-m)	2000



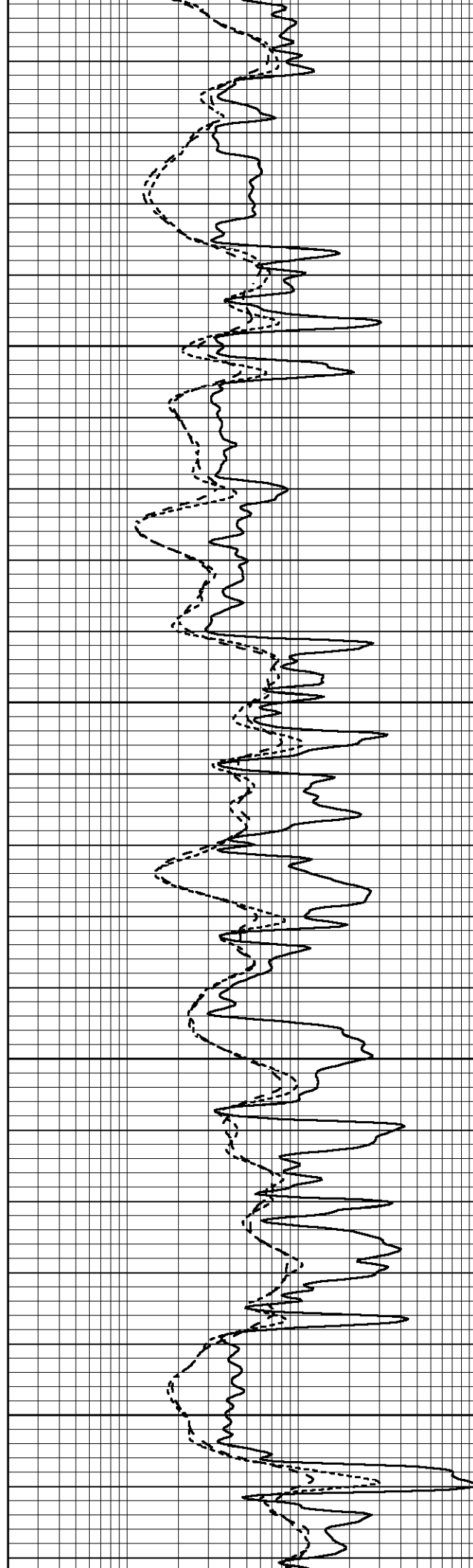


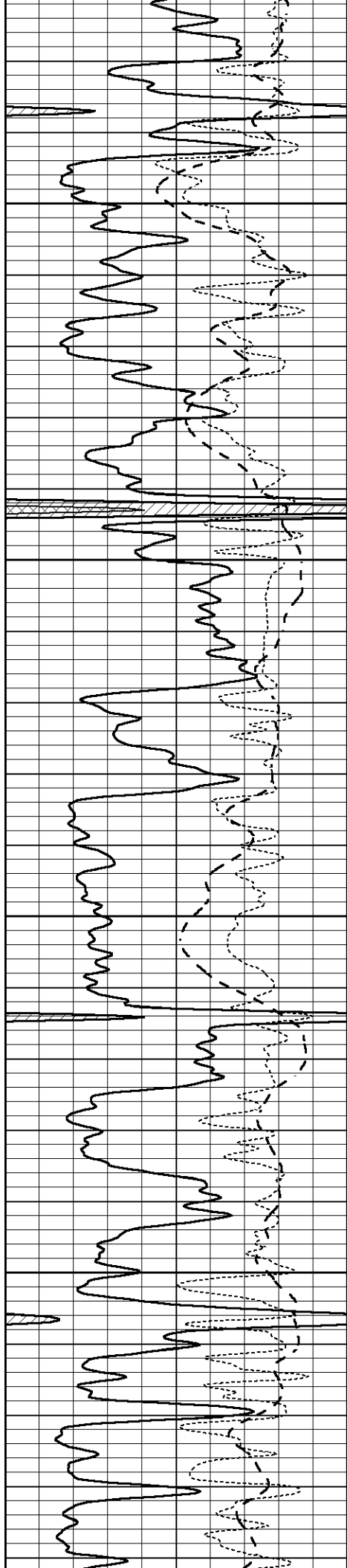
2900

2950

3000

3050



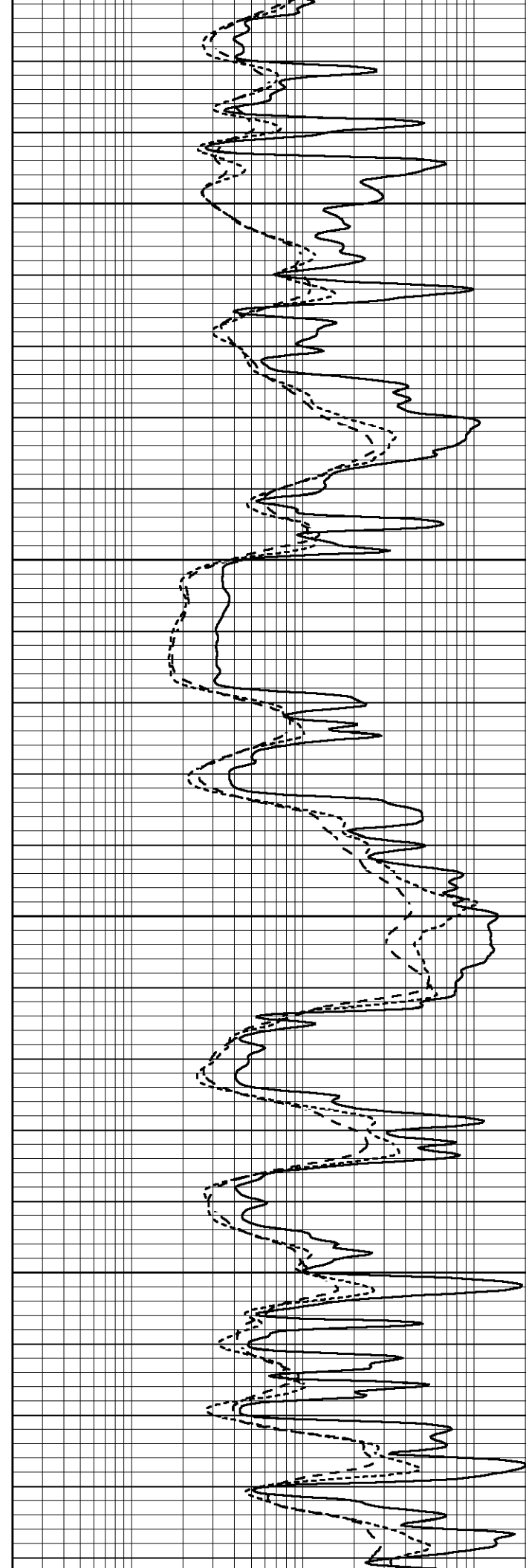


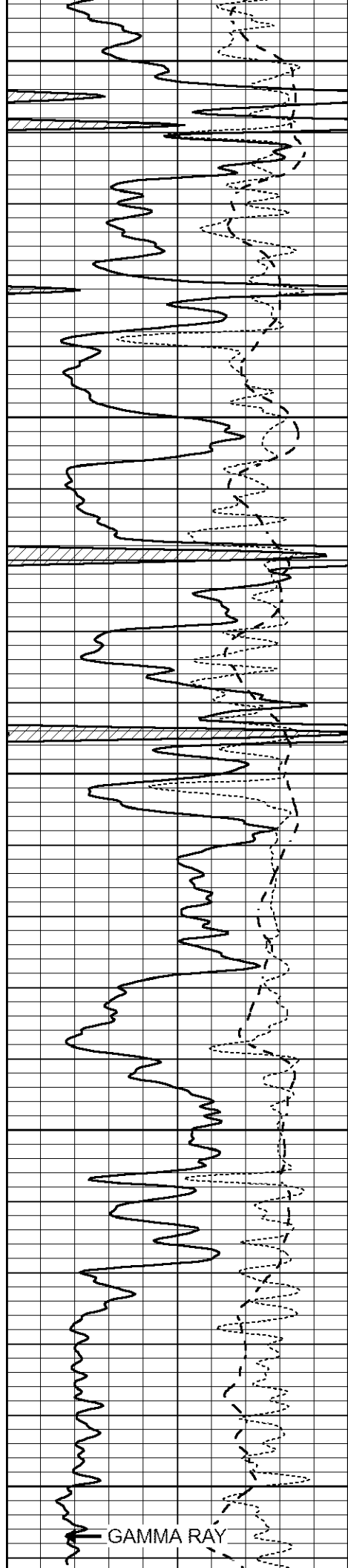
3100

3150

3200

3250





3300

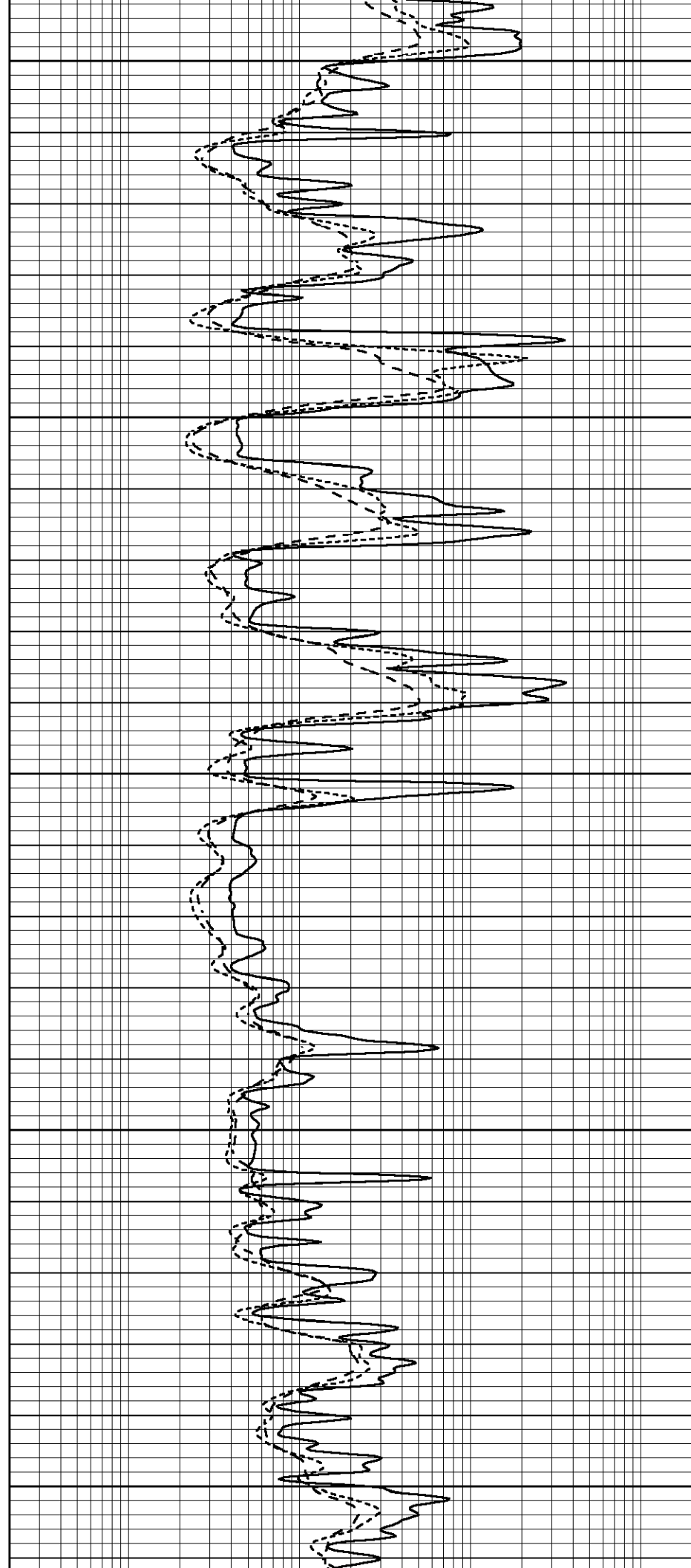
3350

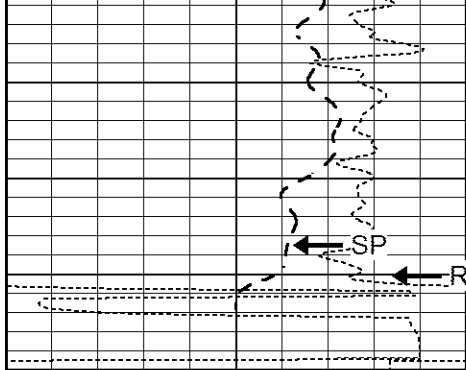
3400

3450

3500

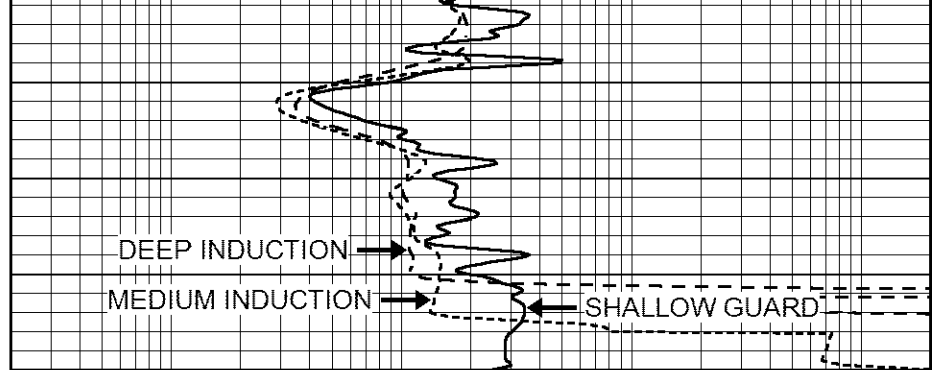
GAMMA RAY



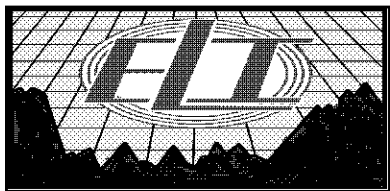


LTD 3547
3550

0	GAMMA RAY (GAPI)	150
-250	Rxo/Rt	50
-100	SP (mV)	100



0.2	SHALLOW GUARD (Ohm-m)	2000
0.2	MEDIUM INDUCTION (Ohm-m)	2000
0.2	DEEP INDUCTION (Ohm-m)	2000

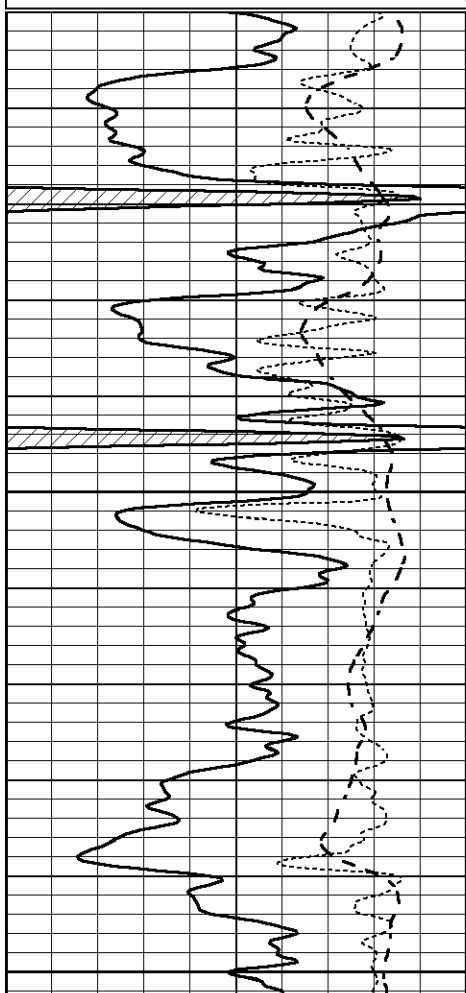


REPEAT SECTION

Database File 2044ddn.db
 Dataset Pathname pass2RP
 Presentation Format _dil
 Dataset Creation Tue Apr 17 07:38:23 2018
 Charted by Depth in Feet scaled 1:240

0	GAMMA RAY (GAPI)	150
-250	Rxo/Rt	50
-100	SP (mV)	100

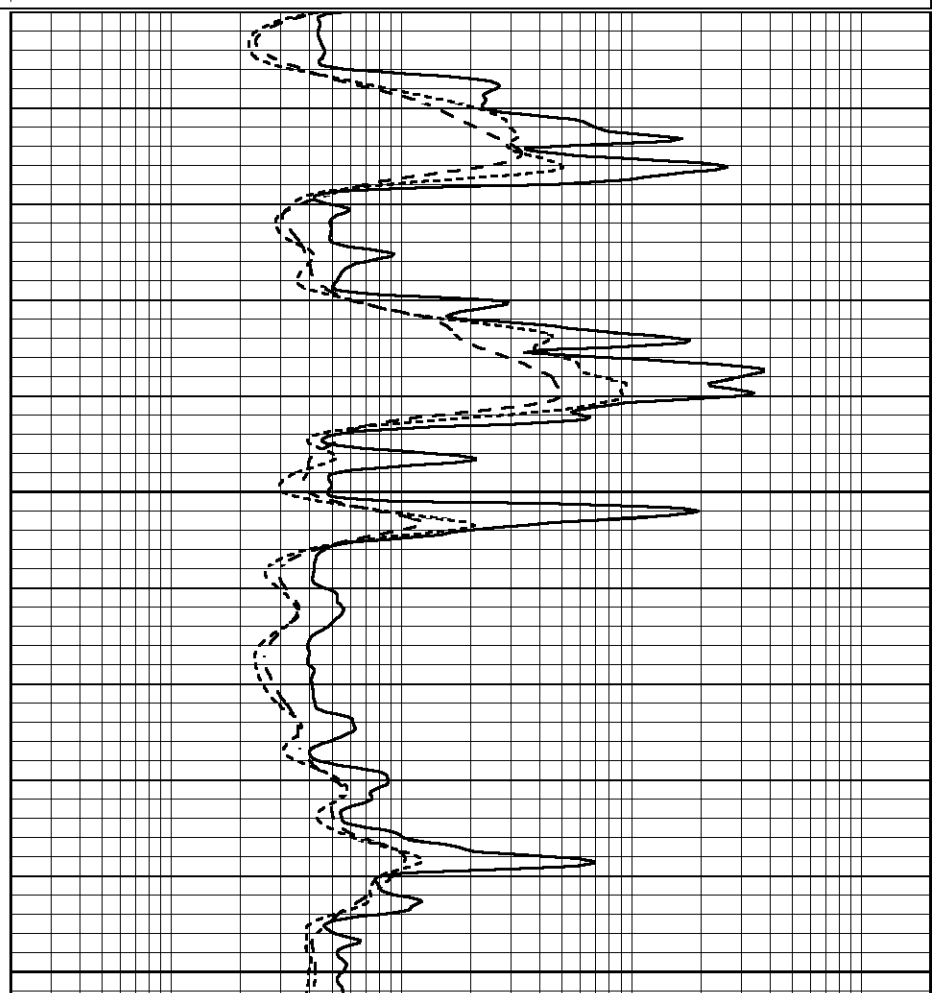
0.2	SHALLOW GUARD (Ohm-m)	2000
0.2	MEDIUM INDUCTION (Ohm-m)	2000
0.2	DEEP INDUCTION (Ohm-m)	2000

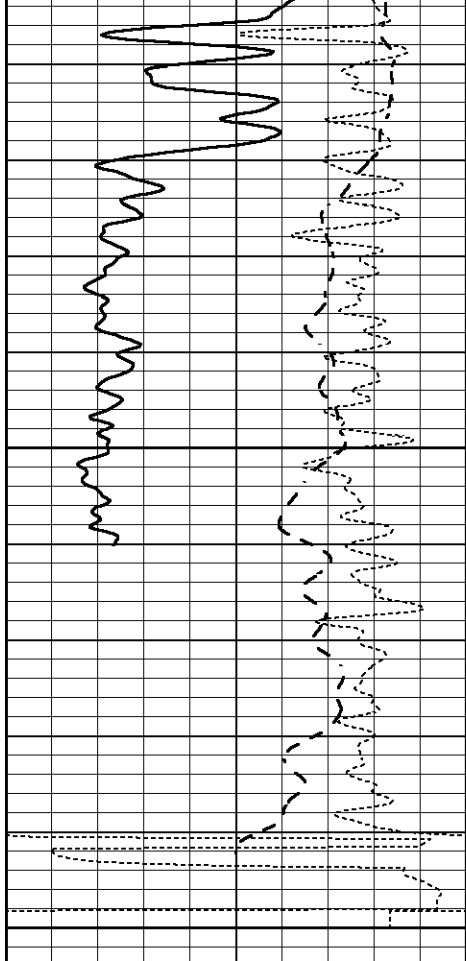


3350

3400

3450

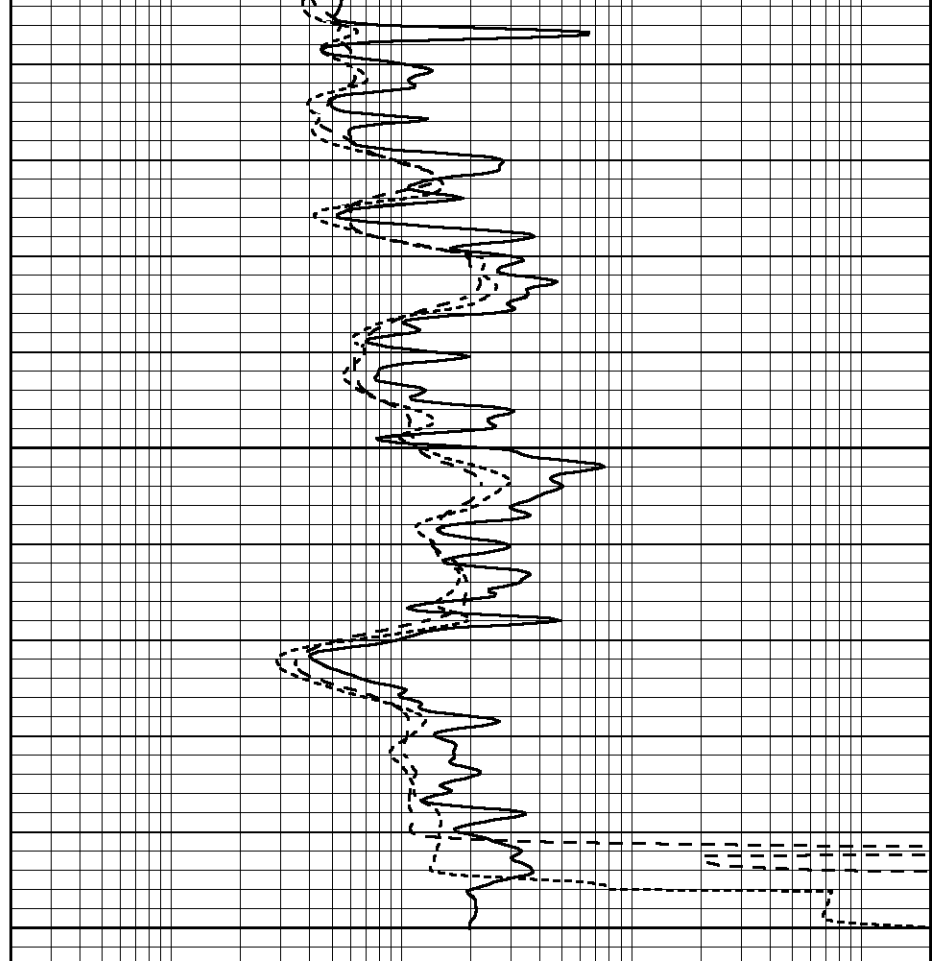




3500

3550

0	GAMMA RAY (GAPI)	150
-250	Rxo/Rt	50
-100	SP (mV)	100



0.2	SHALLOW GUARD (Ohm-m)	2000
0.2	MEDIUM INDUCTION (Ohm-m)	2000
0.2	DEEP INDUCTION (Ohm-m)	2000