



**COMPENSATED  
DENSITY/NEUTRON  
PE/LOG**

Company TRANS PACIFIC OIL CORPORATION  
 Well ODLE A#1-36  
 Field WILDCAT  
 County ROOKS State KANSAS

Location: API #: 15-163-24359-00-00  
 1635' FSL & 1812' FWL  
 Permanent Datum GROUND LEVEL Elevation 1957  
 Log Measured From KELLY BUSHING 8' A.G.L  
 Drilling Measured From KELLY BUSHING  
 SEC 36 TWP 6S RGE 19W  
 Other Services  
 DILMEL  
 SONIC  
 Elevation  
 K.B. 1965  
 D.F. 1963  
 G.L. 1957

Date	4/17/18	ONE	
Run Number	ONE		
Depth Driller	3645		
Depth Logger	3647		
Bottom Logged Interval	3625		
Top Log Interval	2800		
Casing Driller	8 5/8" @ 219		
Casing Logger	219		
Bit Size	7 7/8		
Type Fluid in Hole	CHEMICAL MUD	CHLORIDES 2000 PPM	
Density / Viscosity	9.1/58		
pH / Fluid Loss	10.5/6.8		
Source of Sample	FLOWLINE		
Rm @ Meas. Temp	1.6 @ 52F		
Rmt @ Meas. Temp	1.2 @ 52F		
Rmc @ Meas. Temp	1.92 @ 52F		
Source of Rmf / Rmc	MEASUREMENT		
Rm @ BHT	.74 @ 112F		
Time Circulation Stopped	2 HOURS		
Time Logger on Bottom	////		
Maximum Recorded Temperature	112F		
Equipment Number	3802		
Location	HAYS, KANSAS		
Recorded By	GUS PFANENSTIEL		
Witnessed By	NICK HIXON		

<<< Fold Here >>>

All interpretations are opinions based on inferences from electrical or other measurements and we cannot and do not guarantee the accuracy or correctness of any interpretation, and we shall not, except in the case of gross or willful negligence on our part, be liable or responsible for any loss, costs, damages, or expenses incurred or sustained by anyone resulting from any interpretation made by any of our officers, agents or employees. These interpretations are also subject to our general terms and conditions set out in our current Price Schedule.

Comments

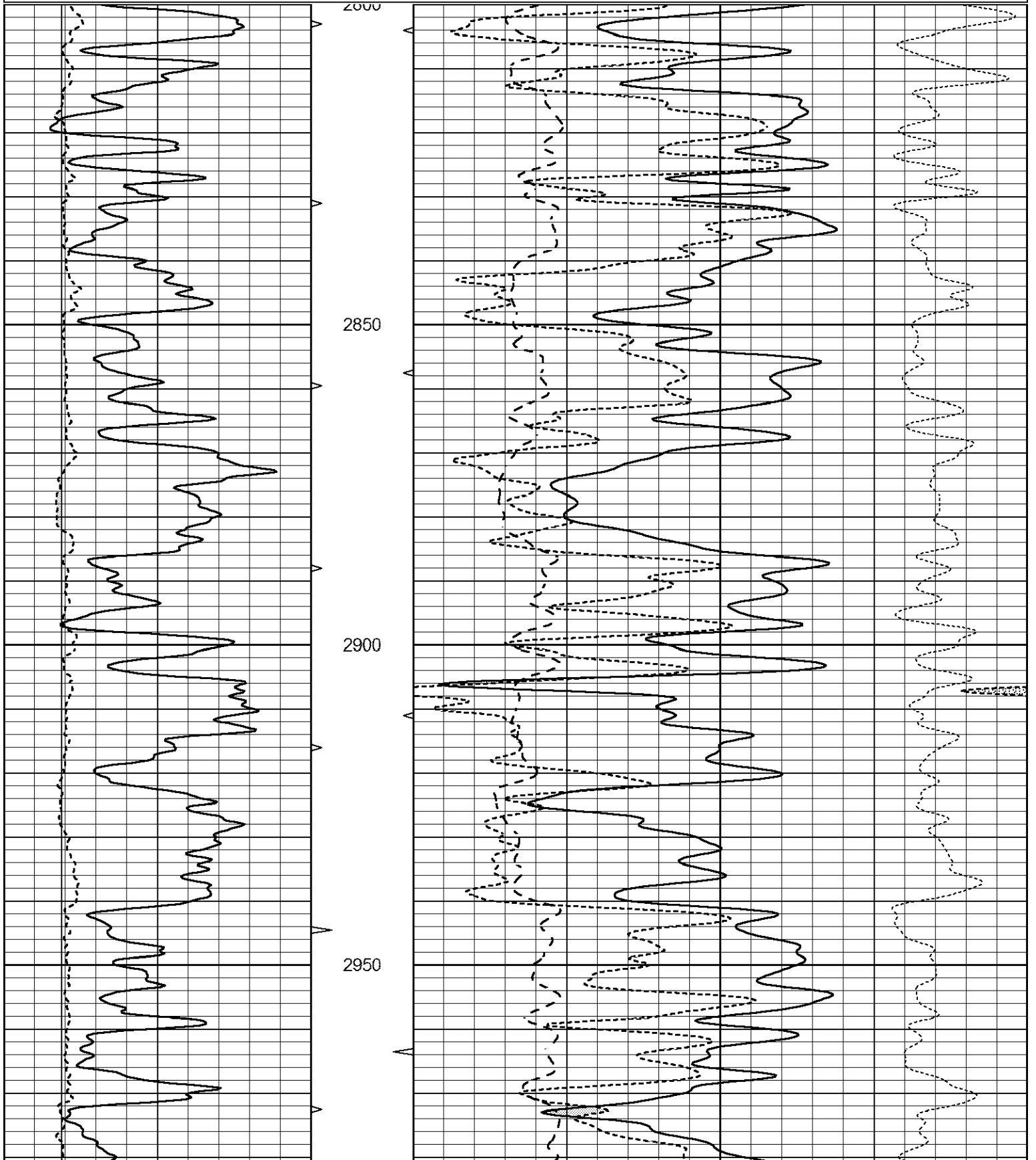
THANK YOU FOR USING ELI WIRELINE SERVICES, HAYS, KS. ( 785 ) 628-6395  
 DIRECTIONS  
 STOCKTON 3 NORTH AND 6 WEST

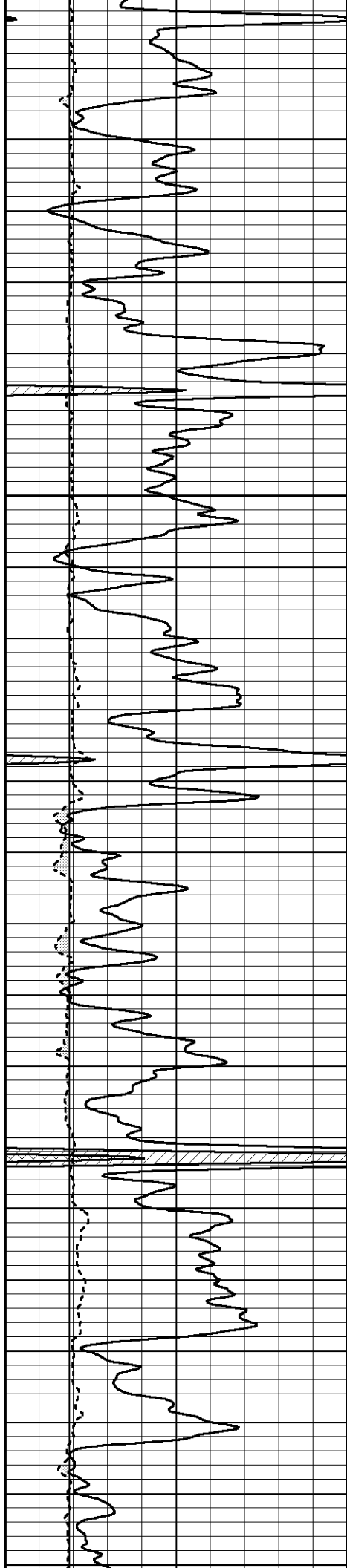


# MAIN PASS

Database File 2044ddn.db  
 Dataset Pathname pass3.1  
 Presentation Format \_ldt\_neu  
 Dataset Creation Tue Apr 17 07:53:02 2018  
 Charted by Depth in Feet scaled 1:240

0	GAMMA RAY (GAPI)	150	ABHV	30	COMPENSATED DENSITY (pu)			-10	
6	CALIPER (in)	16	10 (ft3)	0	30	COMPENSATED NEUTRON (pu)			-10
				0	PE	10	-0.25	CORRECTION (g/cc)	0.25
				0 (ft3)	10				





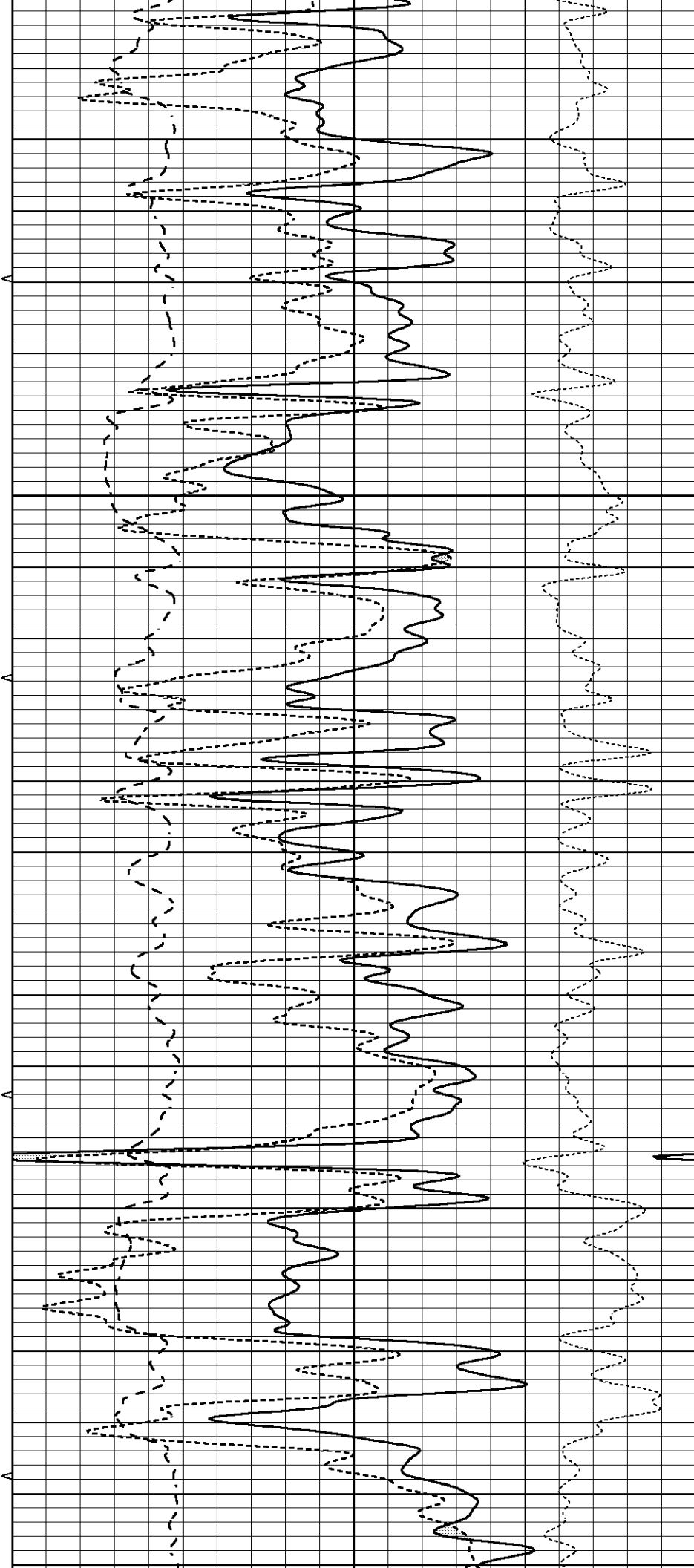
3000

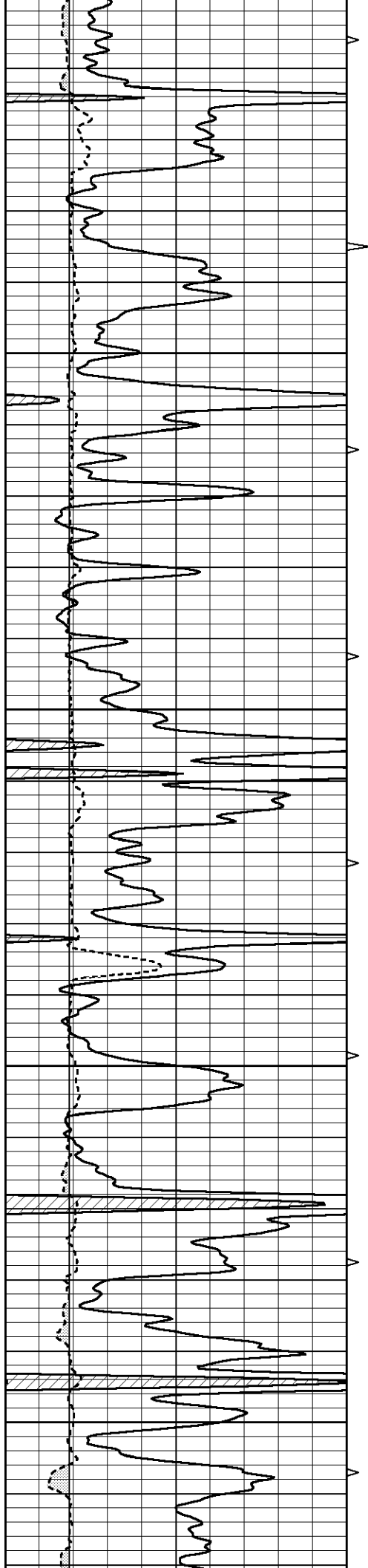
3050

3100

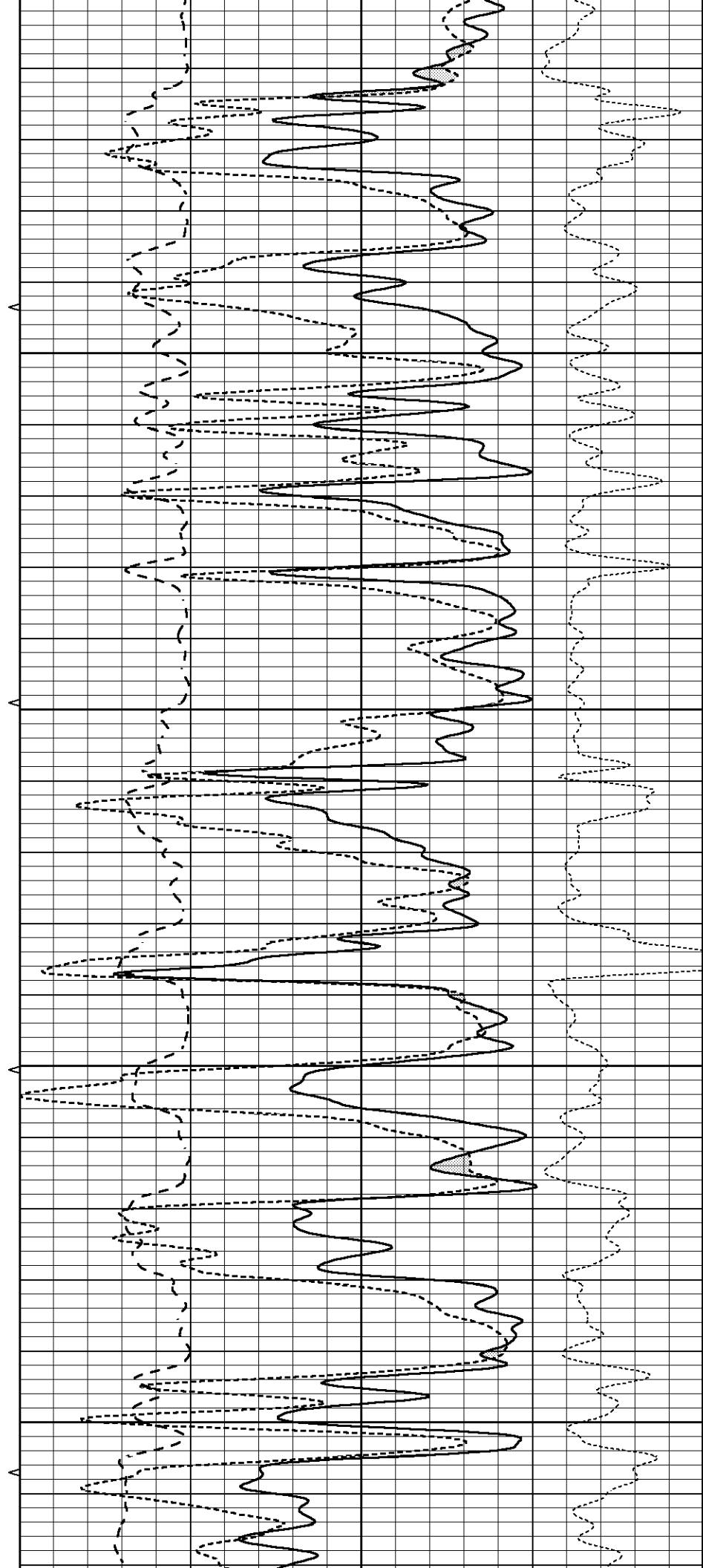
3150

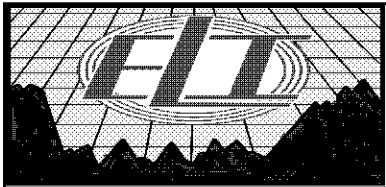
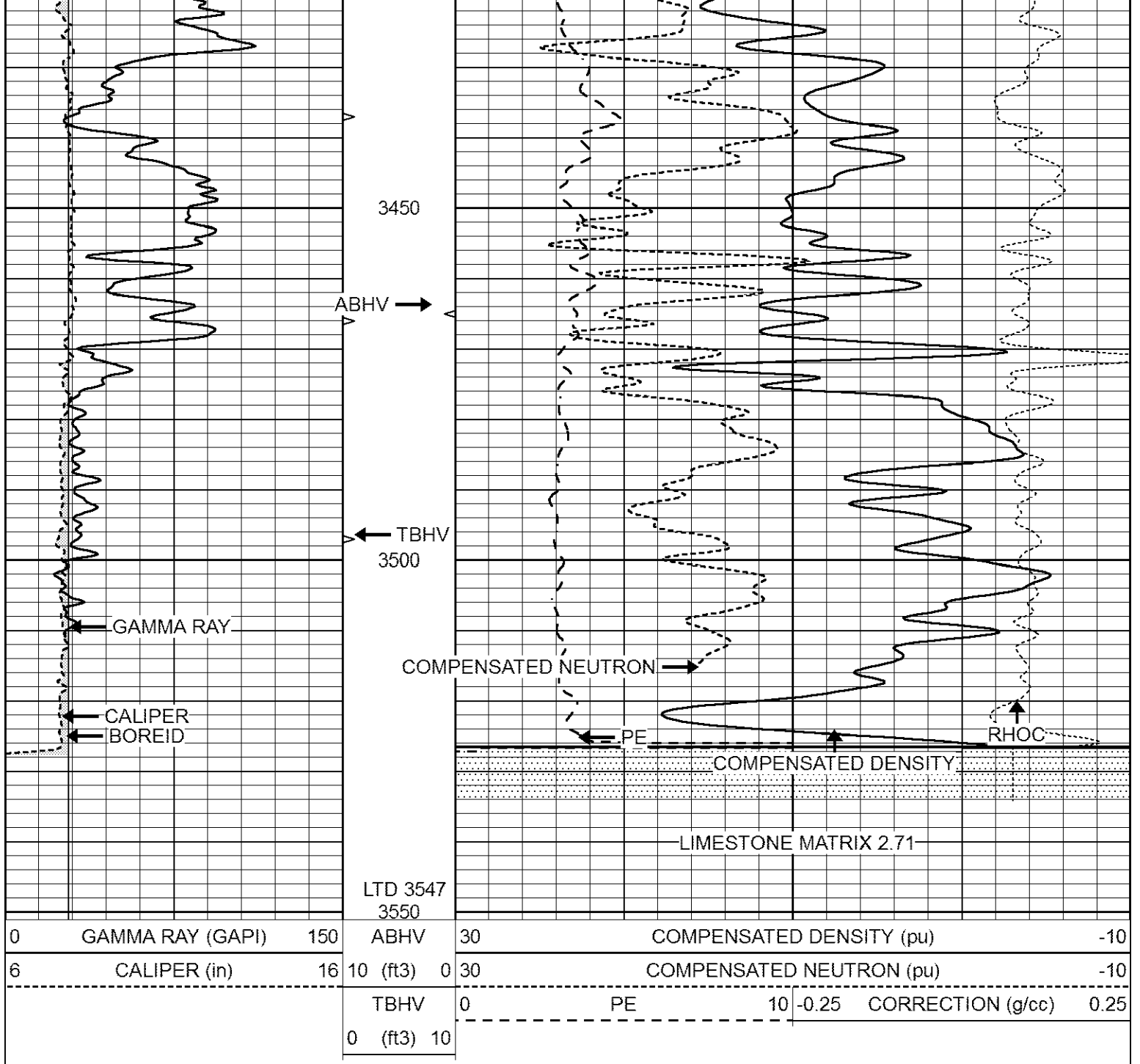
3200





3200  
3250  
3300  
3350  
3400

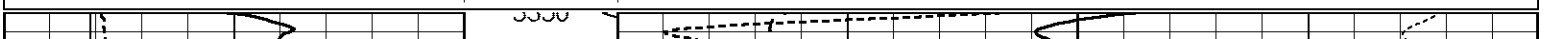


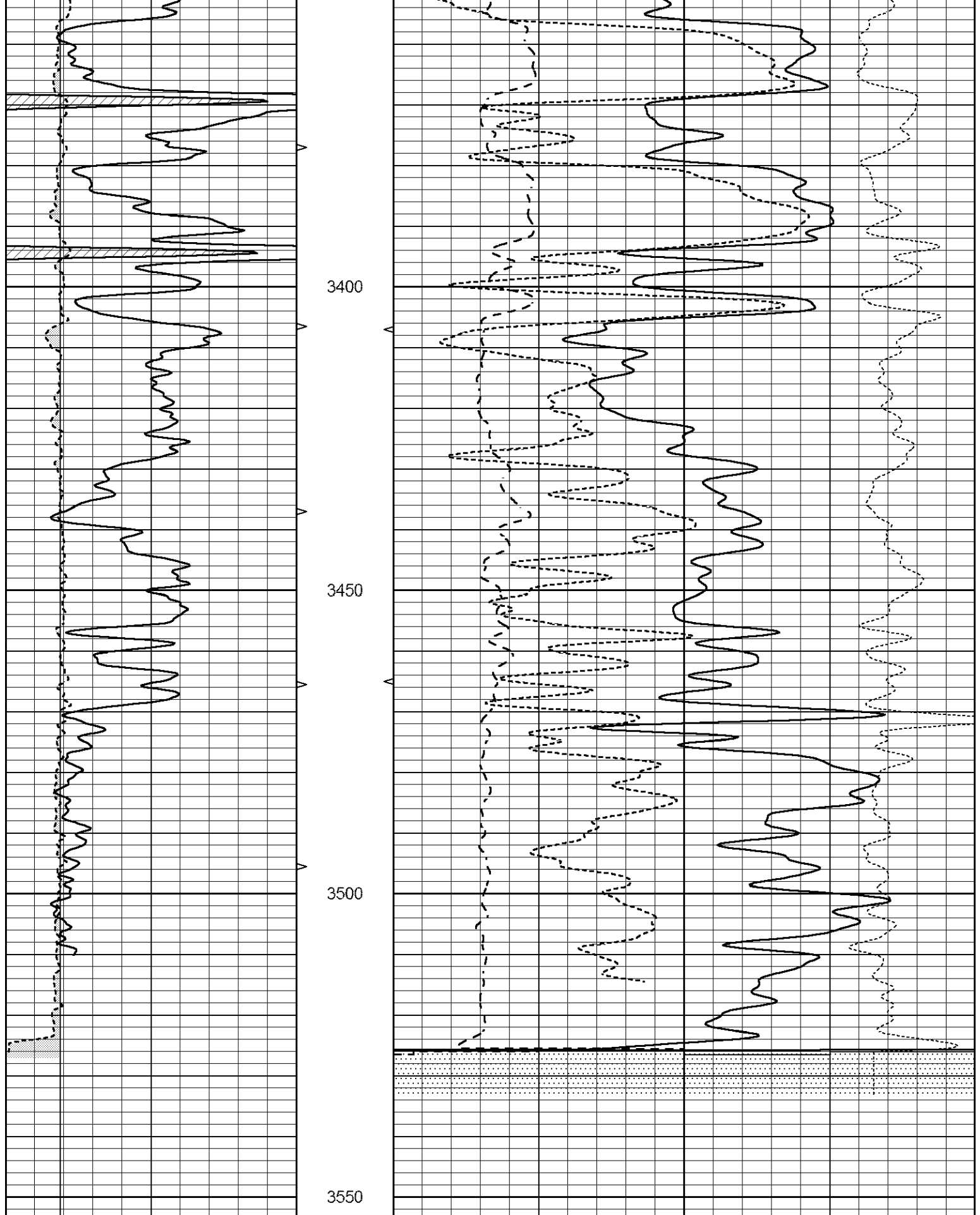


# REPEAT SECTION

Database File 2044ddn.db  
 Dataset Pathname pass2RP  
 Presentation Format \_ldt\_neu  
 Dataset Creation Tue Apr 17 07:38:23 2018  
 Charted by Depth in Feet scaled 1:240

0	GAMMA RAY (GAPI)	150	ABHV	30	COMPENSATED DENSITY (pu)	-10
6	CALIPER (in)	16	10 (ft3)	0 30	COMPENSATED NEUTRON (pu)	-10
			TBHV	0	PE	10 -0.25 CORRECTION (g/cc) 0.25
			0 (ft3)	10		





0	GAMMA RAY (GAPI)	150	ABHV	30	COMPENSATED DENSITY (pu)	-10
6	CALIPER (in)	16	10 (ft3)	0 30	COMPENSATED NEUTRON (pu)	-10
			TBHV	0	PE	10 -0.25
			0 (ft3)	10		CORRECTION (g/cc) 0.25

