



MICRO LOG

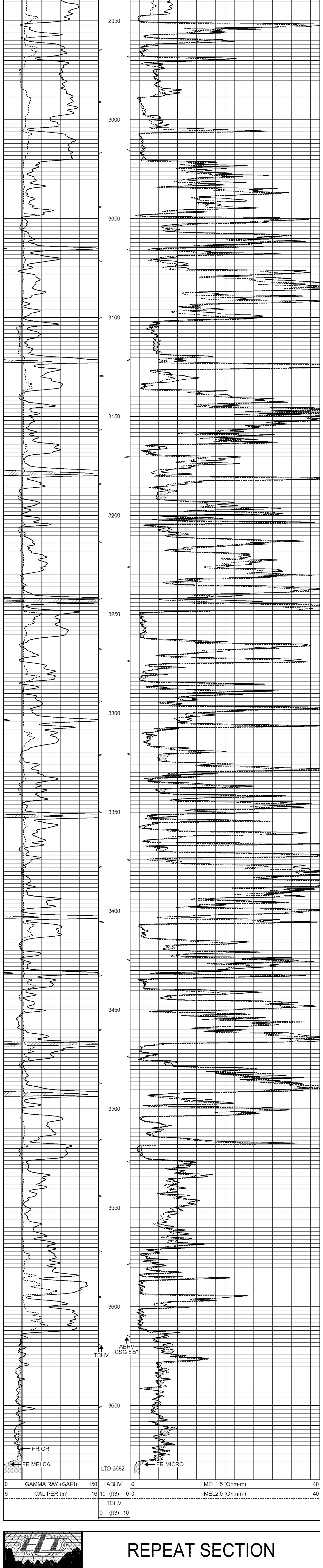
Company	TRANS PACIFIC OIL CORPORATION
Well	WILSON "A" #1-34
Field	WILDCAT
County	ROOKS
State	KANSAS
Location:	SEC 34 TWP 10S RGE 18W 2949 FNL & 10927 FWL
AP#	15-153-24351-0000
Other Services	CDL/CN/CP/E
DIL	
Permit/Datum	GROUNDED LEVEL Elevation 2035
Log Measured From	KELLY BUSHING 6' G.L.
Drilling Measured From	KELLY BUSHING
Date	11/11/18
Run Number	TWO
Depth Logger	3682
Bottom Logged Interval	2980
Top Log Interval	8.58 @ 221
Casing Diameter	7.75
Bit Size	7.75
Type Fluid in Hole	CHEMICAL MUD
Density / Viscosity	9.1/50
pH / Fluid Loss	10.5/6.8
Source of Sample	FLOWLINE
Run @ Meas Temp	50 @ 55F
Run @ Meas Temp	37 @ 55F
Run @ Meas Temp	60 @ 55F
Source of Fm/rl / Rm	MEASUREMENT
Rm @ BHT	24 @ 113F
Time Circulation Stopped	21 HOURS
Time Loggin on Bottom	
Maximum Recorded Temperature	113F
Equipment Number	3802
Location	HAYS, KANSAS
Recorded By	JASON CARPELLUCCI
Witnessed By	BRYCE BIDLAKIAN

All interpretations are opinions based on inferences from electrical or other measurements and we cannot and do not guarantee the accuracy or correctness of any interpretation, and we shall not, except in the case of gross or willful negligence on our part, be liable or responsible for any loss, costs, damages, or expenses incurred or sustained by anyone resulting from any interpretation made by any of our officers, agents or employees. These interpretations are also subject to our general terms and conditions set out in our current Price Schedule.

Comments  
THANK YOU FOR USING ELI WIRELINE SERVICES, HAYS, KS. ( 785 ) 628-6395  
DIRECTIONS  
HAYS, KS. - NORTH ON HWY 183 TO COUNTY LINE - 1 NORTH TO DD RD.  
1 1/2 WEST ON CURVED ROAD - SOUTH INTO AT METAL GATE

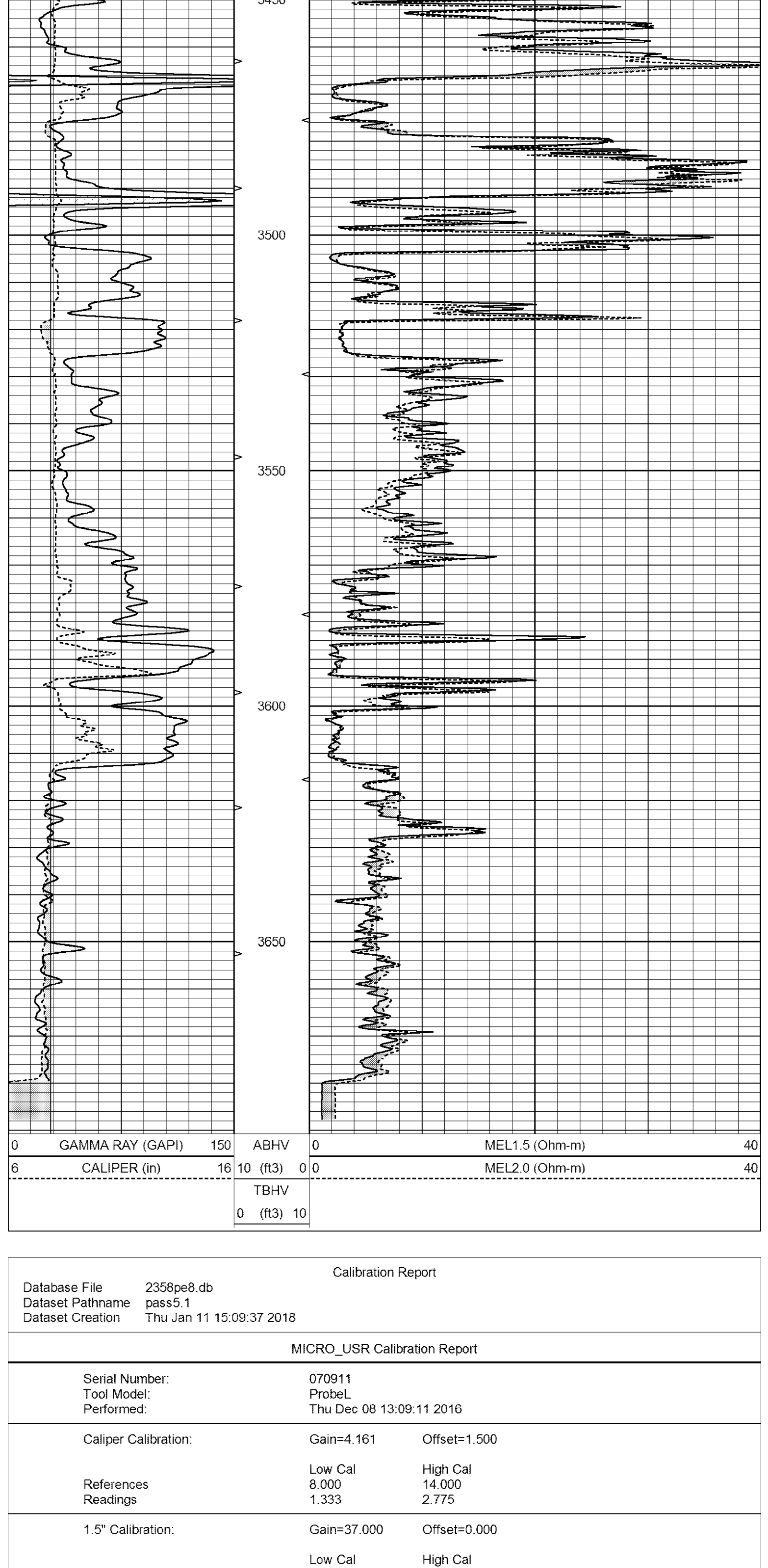
### MAIN SECTION

Database File	2358pe8.db
Dataset Pathname	pass6.1
Presentation Format	micro
Dataset Creation	Thu Jan 11 15:20:18 2018
Charted by	Depth in Feet scaled 1:240



### REPEAT SECTION

Database File	2358pe8.db
Dataset Pathname	pass5.1
Presentation Format	micro
Dataset Creation	Thu Jan 11 15:09:37 2018
Charted by	Depth in Feet scaled 1:240



#### Calibration Report

Database File	2358pe8.db
Dataset Pathname	pass5.1
Dataset Creation	Thu Jan 11 15:09:37 2018

#### MICRO\_USR Calibration Report

Serial Number:	070911
Tool Model:	ProbeL
Performed:	Thu Dec 08 13:09:11 2016

Caliper Calibration:	Gain=4.161	Offset=-1.500
References Readings	Low Cal 8.000	High Cal 14.000
	1.333	2.775

1.5" Calibration:	Gain=37.000	Offset=0.000
References Readings	Low Cal 0.000	High Cal 20.000
	0.004	0.843

2" Calibration:	Gain=35.000	Offset=0.650
References Readings	Low Cal 0.000	High Cal 20.000
	0.021	0.810

#### Microlog Calibration Report

Serial-Model:	070911-ProbeL
Performed:	Sat Apr 11 01:13:01 2015

Readings		References		Results		
	Zero	Cal	Zero	Cal	m	b

Normal	0.0002	0.4836	V	0.0000	10.0000	Ohm-m	20.6908	-0.0051
Inverse	0.0018	0.6297	V	0.0000	10.0000	Ohm-m	15.9263	-0.0282
Caliper	0.0000	1.0000	V	0.0000	1.0000	in	1.0000	0.0000

#### Gamma Ray Calibration Report

Serial Number:	7
Tool Model:	Probe1
Performed:	Wed Jun 29 11:10:58 2016

Calibrator Value:	1.0	GAPI
-------------------	-----	------

Background Reading:	0.0	cps
Calibrator Reading:	1.0	cps

Sensitivity:	0.4300	GAPI/cps
--------------	--------	----------