



**Sonic Cement
Bond Log**

15-097-21831-00-00

API No.

Company **Woolsey Operating Company, LLC**

Well **Dargel #1**

Field **Ursula SE**

County **Kiowa**

State **Kansas**

Location

2010' FNL & 330' FEL

Sec: **15** Twp: **29S** Rge: **18W**

Other Services
Mast Trailer

Elevation

K.B. 2183
D.F. 2182
G.L. 2171

Permanent Datum **Ground Level** Elevation **2171**

Log Measured From **Kelly Bushing** 12 Ft. Above Perm. Datum

Drilling Measured From **Kelly Bushing**

Run Number **One**

Date Survey **12/26/2017**

Date Cementing **12/18/2017**

Type Cementing Operation **Primary**

Depth Driller **5250**

Depth Logger **5070**

Logged Interval **5069 to 3650**

Casing Driller **5.5 @ TD**

Float Collar -- D.V. Tool **////**

Squeeze Depth **////**

Amount & Type Cement **////**

Amount & Type Admix **////**

Type Fluid In Hole **Water**

Fluid Level **Full**

Salinity PPM CL **////**

Weight lb/gal -- Vis. **////**

Approx. Logged Cement Top **3828**

Calculated Cement Top **////**

Max. Hole Temperature **////**

Tool No. **DIG02**

Spacing Recorded **3-5**

Equipment -- Location **02 Pratt**

Recorded By **N. Schmeidler**

Witnessed By **Bill Gallaugher**

<<< Fold Here >>>

All interpretations are opinions based on inferences from electrical or other measurements and we cannot and do not guarantee the accuracy or correctness of any interpretation, and we shall not, except in the case of gross or willful negligence on our part, be liable or responsible for any loss, costs, damages, or expenses incurred or sustained by anyone resulting from any interpretation made by any of our officers, agents or employees. These interpretations are also subject to our general terms and conditions set out in our current Price Schedule.

Comments

Thank you for using Excel Wireline (620) 388-5676

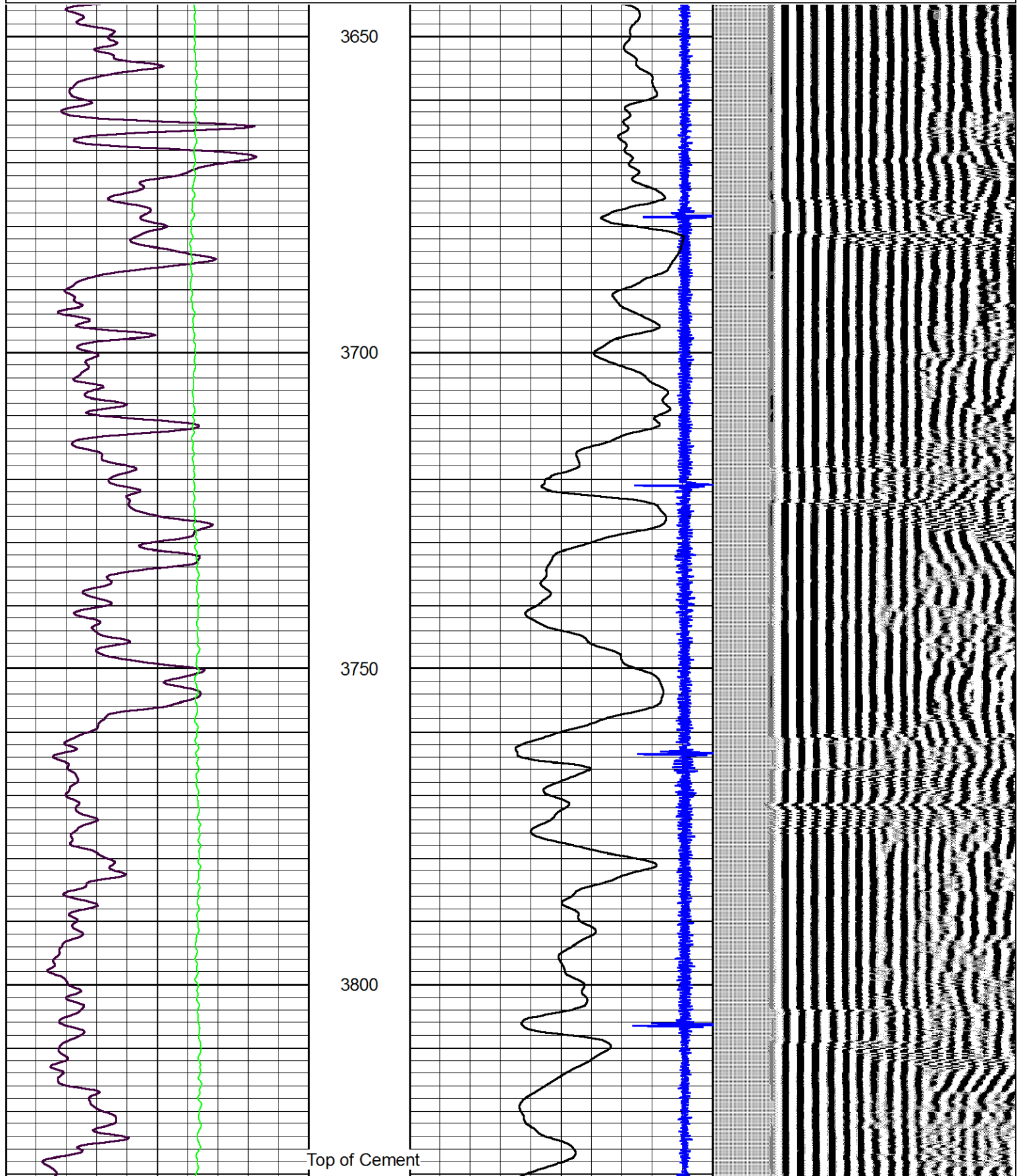
Greensburg
E side
6 S on 33rd
W into

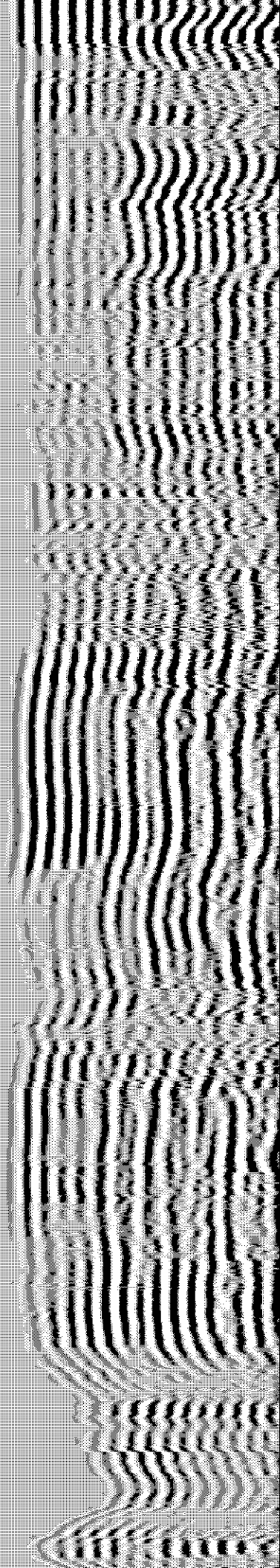
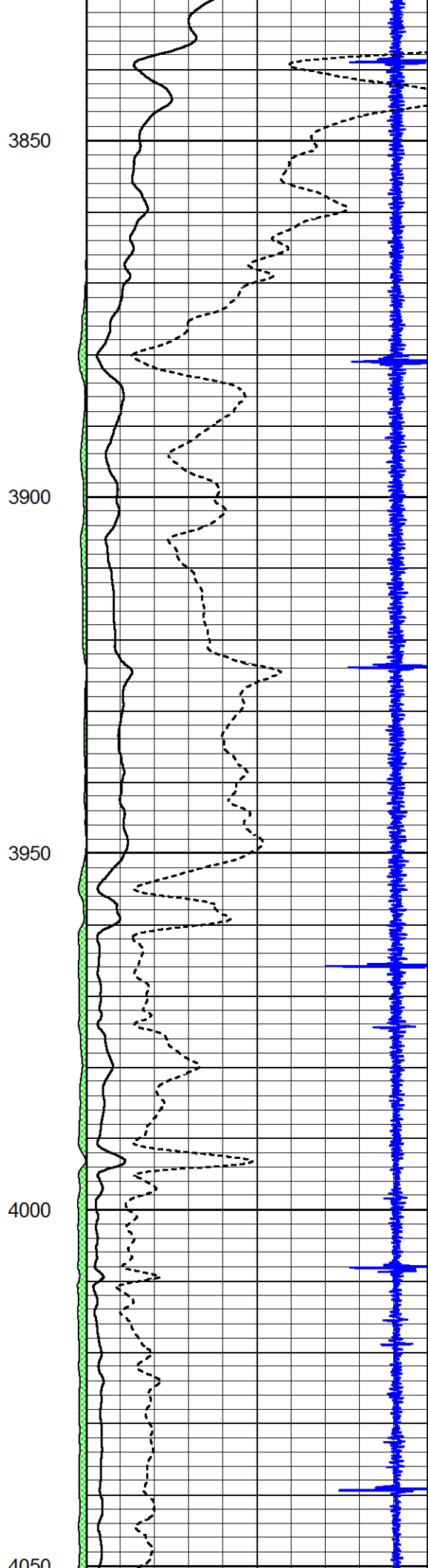


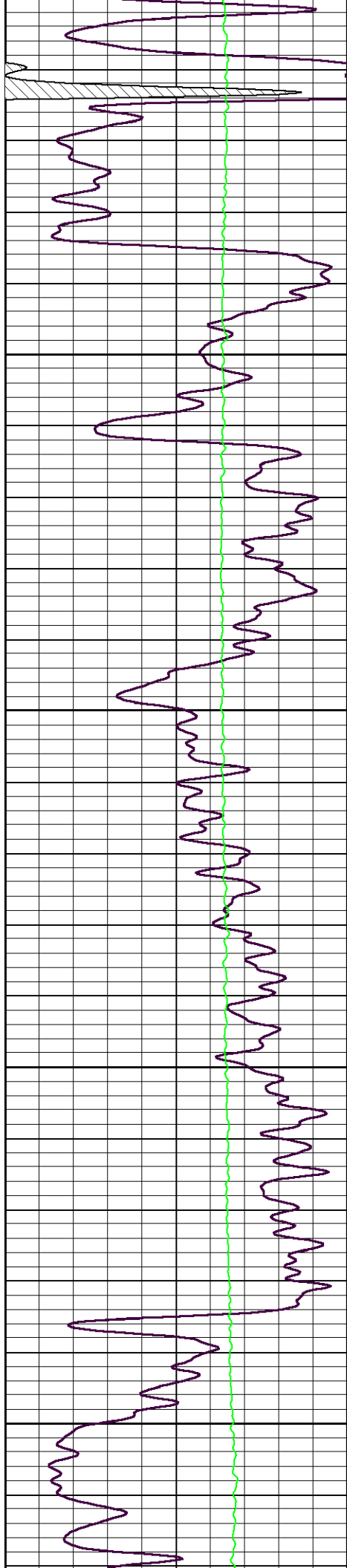
Main Pass

Database File woolsey_dargel_1.db
 Dataset Pathname grcbl/pass4
 Presentation Format excel
 Dataset Creation Tue Dec 26 08:33:56 2017
 Charted by Depth in Feet scaled 1:240

0	Gamma Ray (GAPI)	150	amp3ft	3	Casing Collars	-0.3	200	Variable Density	1200
0	LTEN (lb)	2000	(mV)	Amplitude					
			-100 10	Amplified Amplitude (mV)					







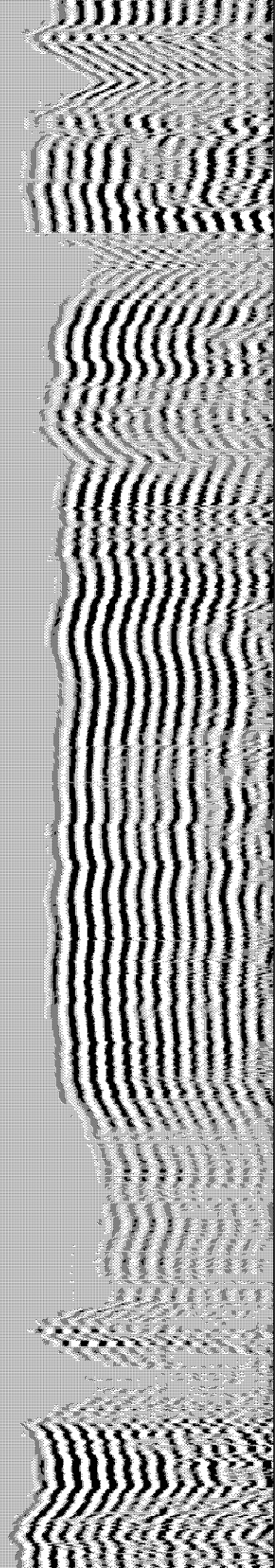
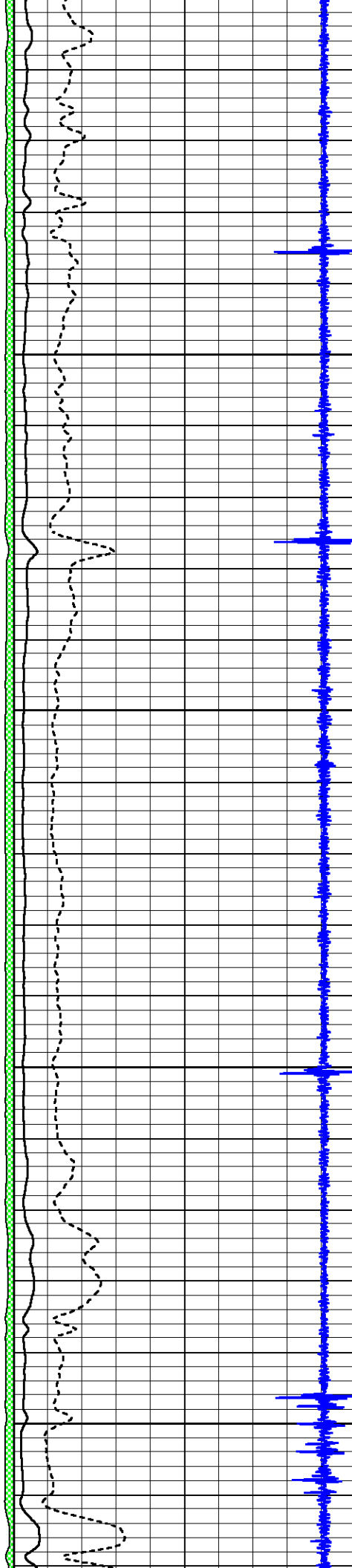
4050

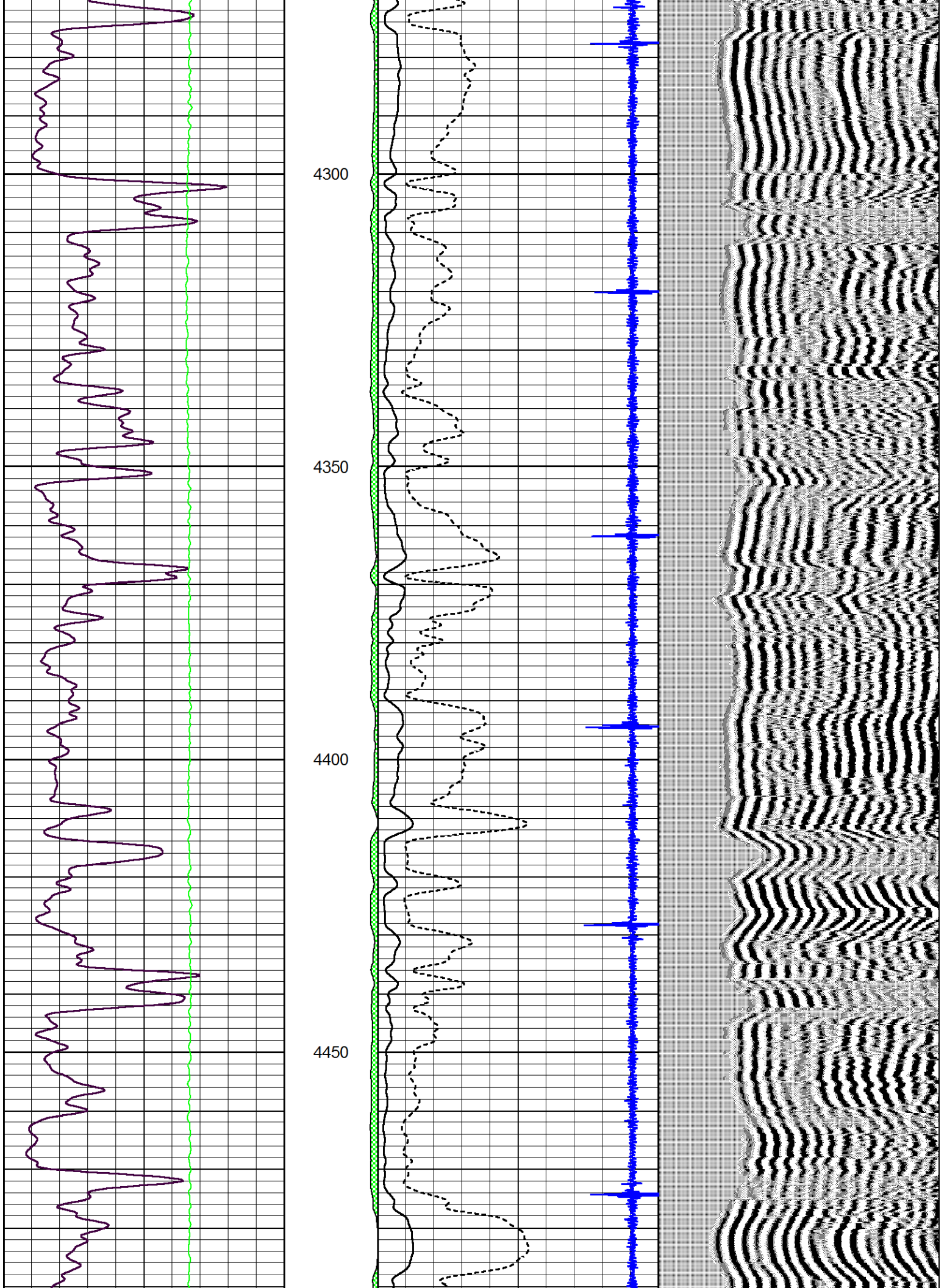
4100

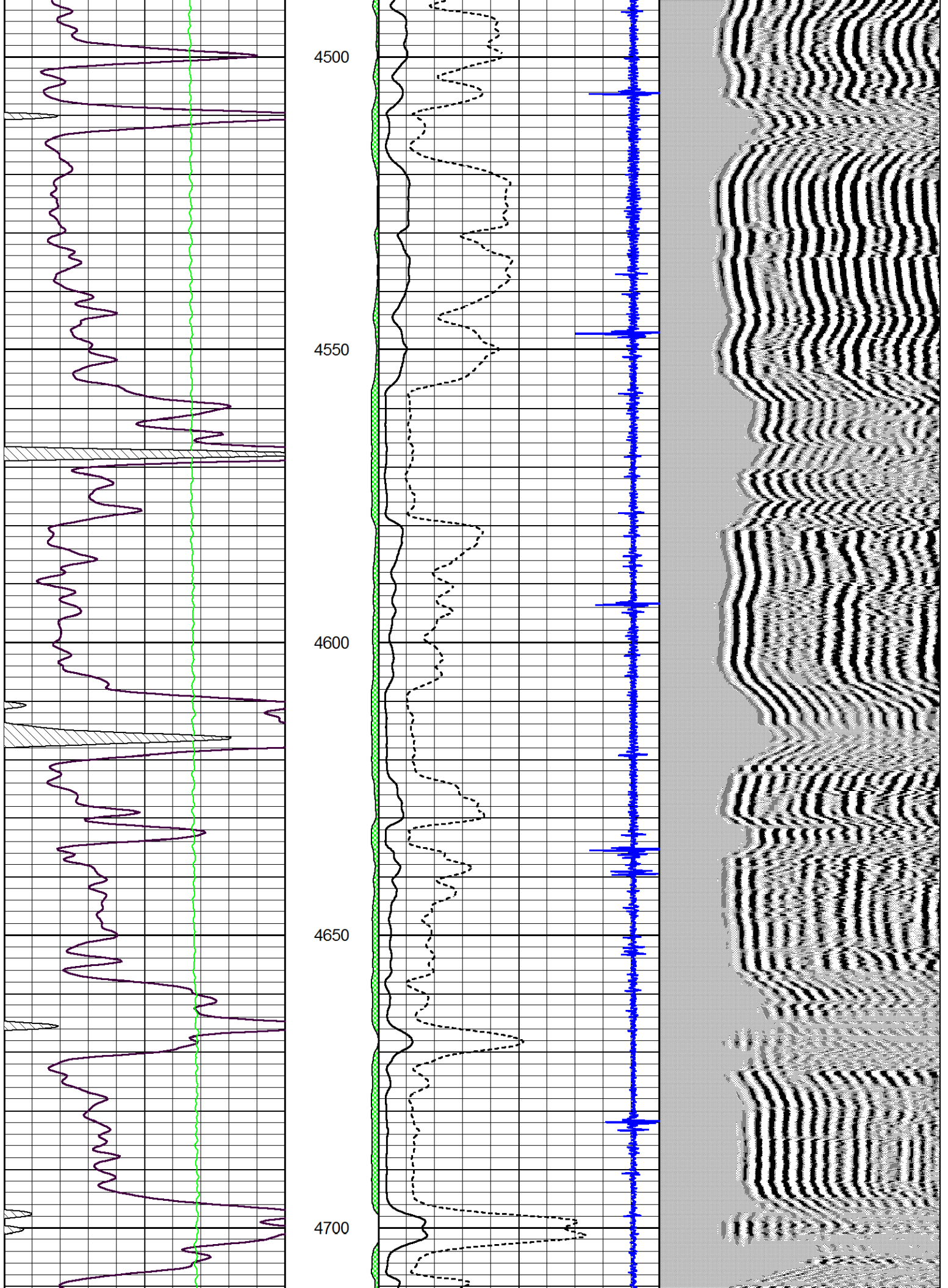
4150

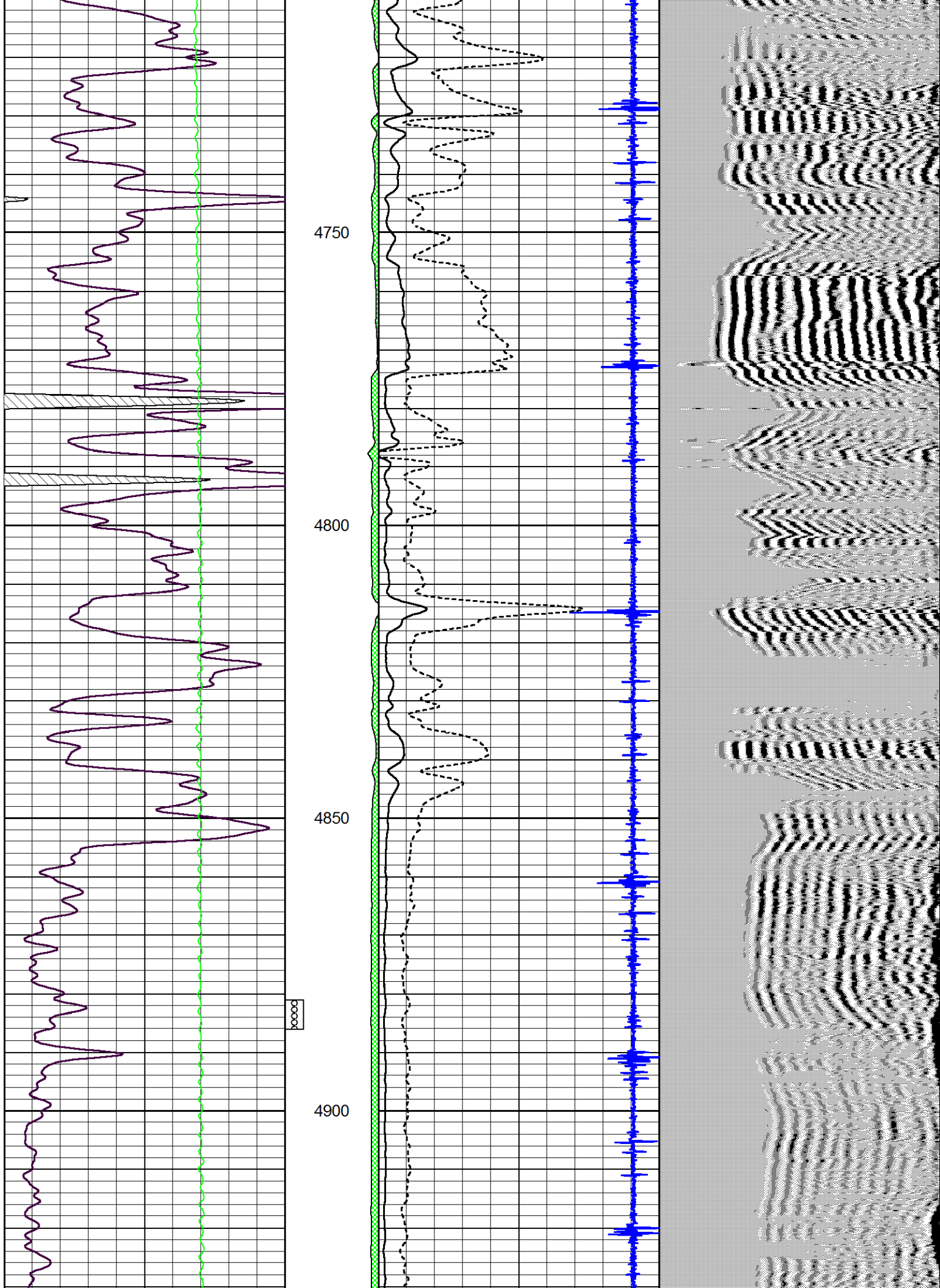
4200

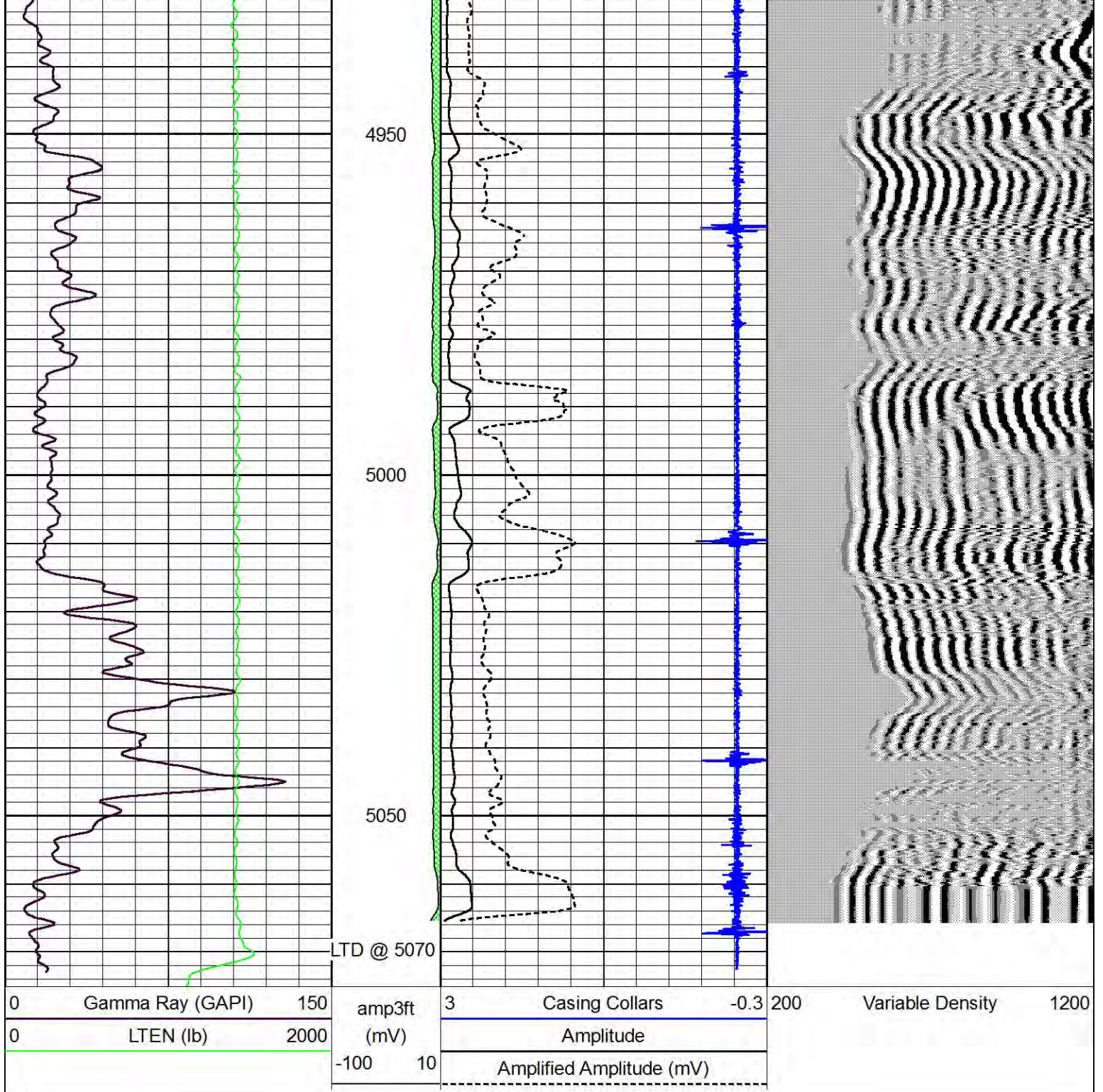
4250











Repeat Section

Database File woolsey_dargel_1.db
 Dataset Pathname grcbl/pass3
 Presentation Format excel
 Dataset Creation Tue Dec 26 08:27:09 2017
 Charted by Depth in Feet scaled 1:240

