



**BOREHOLE COMPENSATED
SONIC LOG**

Company STRATAKAN EXPLORATION, INC
Well BONNEWELL NO. 18-1
Field FARMER NORTH
County RICE
State KANSAS

Company STRATAKAN EXPLORATION, INC.
Well BONNEWELL NO. 18-1
Field FARMER NORTH
County RICE State KANSAS

Location: API #: 15-159-22850-00-00
2270' FSL & 3010' FEL
SEC 18 TWP 18S RGE 9W
Permanent Datum GROUND LEVEL Elevation 1722'
Log Measured From KELLY BUSHING
Drilling Measured From KELLY BUSHING
Other Services
DIL/MEL
CNL/CDL
Elevation
K.B. 1727'
D.F. N/A
G.L. 1722'

Date	3/11/2018						
Run Number	TWO						
Type Log	BHGS						
Depth Driller	3300'						
Depth Logger	3300'						
Bottom Logged Interval	3289'						
Top Logged Interval	400'						
Type Fluid In Hole	CHEMICAL						
Salinity, PPM CL	8000						
Density	9.5						
Level	FULL						
Max. Rec. Temp. F	109 DEG/F						
Operating Rig Time	3 HOURS						
Equipment -- Location	108 HAYS						
Recorded By	J. HENRICKSON						
Witnessed By	JASON ALM						
Borehole Record		Casing Record					
Run No.	Bit	From	To	Size	Wgt.	From	To
ONE	12.25"	0	430'	8.625"	23#	0	430'
TWO	7.875"	430'	TD				

<<< Fold Here >>>

All interpretations are opinions based on inferences from electrical or other measurements and Pioneer Wireline Services, LLC cannot and does not guarantee the accuracy or correctness of any interpretation, and Pioneer Wireline Services, LLC will not be liable or responsible for any loss, costs, damages, or expenses incurred or sustained by anyone resulting from any interpretation made by any of our officers, agents or employees.

Comments

N/A DENOTES NOT AVAILABLE OR NON-APPLICABLE.
BUSHTON KS
EAST TO CHASE BLACKTOP, 2 SOUTH, WEST INTO AT TANKS

Log Measured From: KELLY BUSHING 5 Ft. Above Permanent Datum

THANK YOU FOR USING PIONEER ENERGY SERVICES
www.pioneerenergy.com 785-625-3858

Your Pioneer Energy Services Crew	This Log Record Was Witnessed By
Engineer: J. HENRICKSON	Primary Witness: JASON ALM
Operator:	Secondary Witness:
Operator:	Secondary Witness:
Operator:	Secondary Witness:

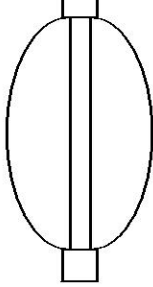
Log Variables

DatabaseC:\ProgramData\Warrior\Data\stratakan_bonnewell_18_1.db
 Dataset field/well/stackml/pass3.1/_vars_

Top - Bottom

A	BOREID in	BOTTEMP degF	CASEOD in	CASETHCK in	FLUIDDEN g/cc	M	MATRXDEN g/cc
1	7.875	109	5.5	0	1	2	2.71
NPORSEL	PERFS	SNDERR mmho/m	SNDERRM mmho/m	SPSHIFT mV	SRFTEMP degF	SZCOR	TDEPTH ft
Limestone	0	0	2	-180	40	Off	3300

Sensor	Offset (ft)	Schematic	Description	Length (ft)	O.D. (in)	Weight (lb)
WVF4 WVF1	11.00 11.00		SLT-PENGO (0001)	16.00	3.50	300.00
WVF3 WVF2	9.00 9.00					



CENT-SIE

3.00

2.00

10.00

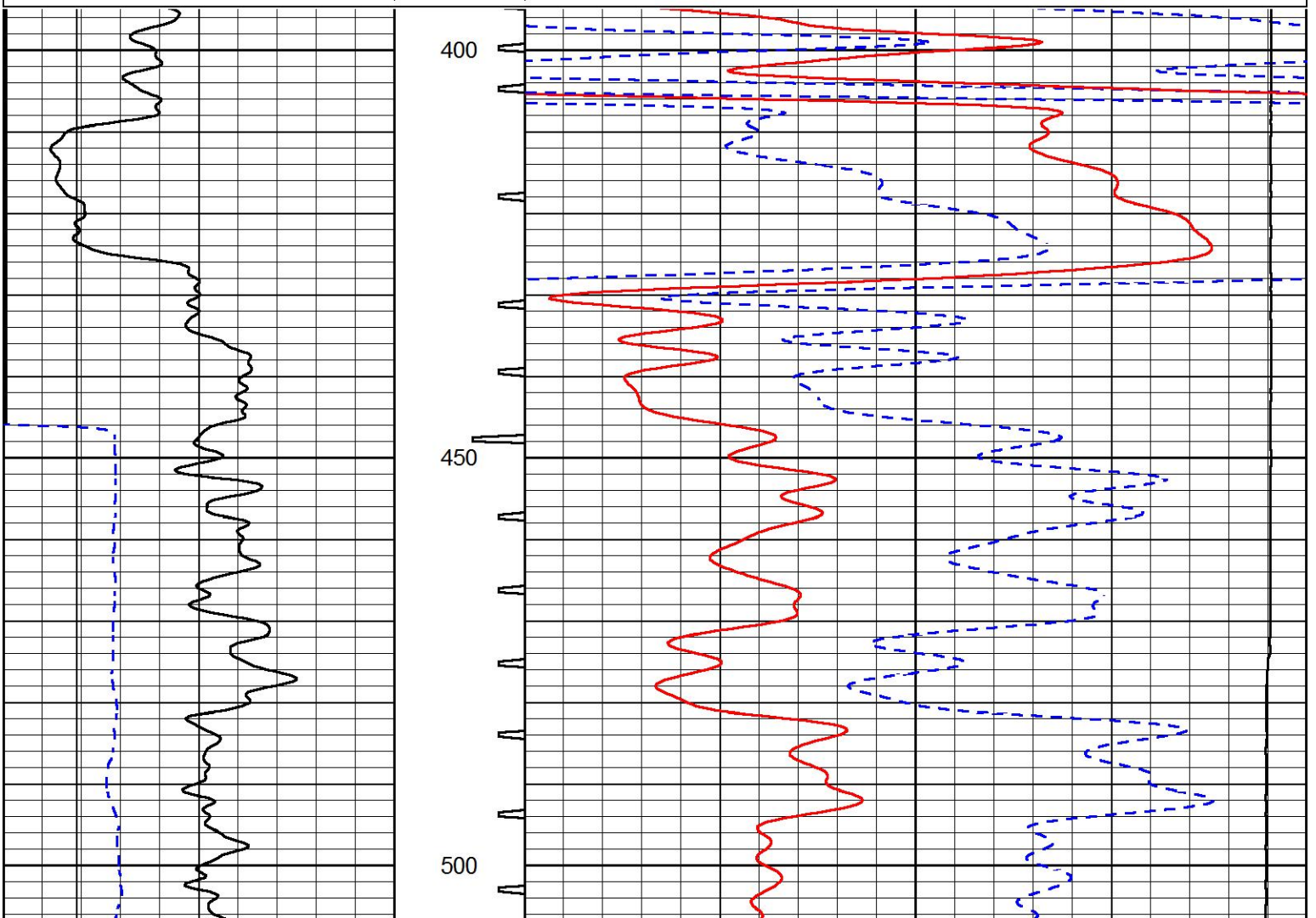
Dataset: stratakan_bonnewell_18_1.db: field/well/SONIC/pass2
 Total length: 19.00 ft
 Total weight: 310.00 lb
 O.D.: 3.50 in

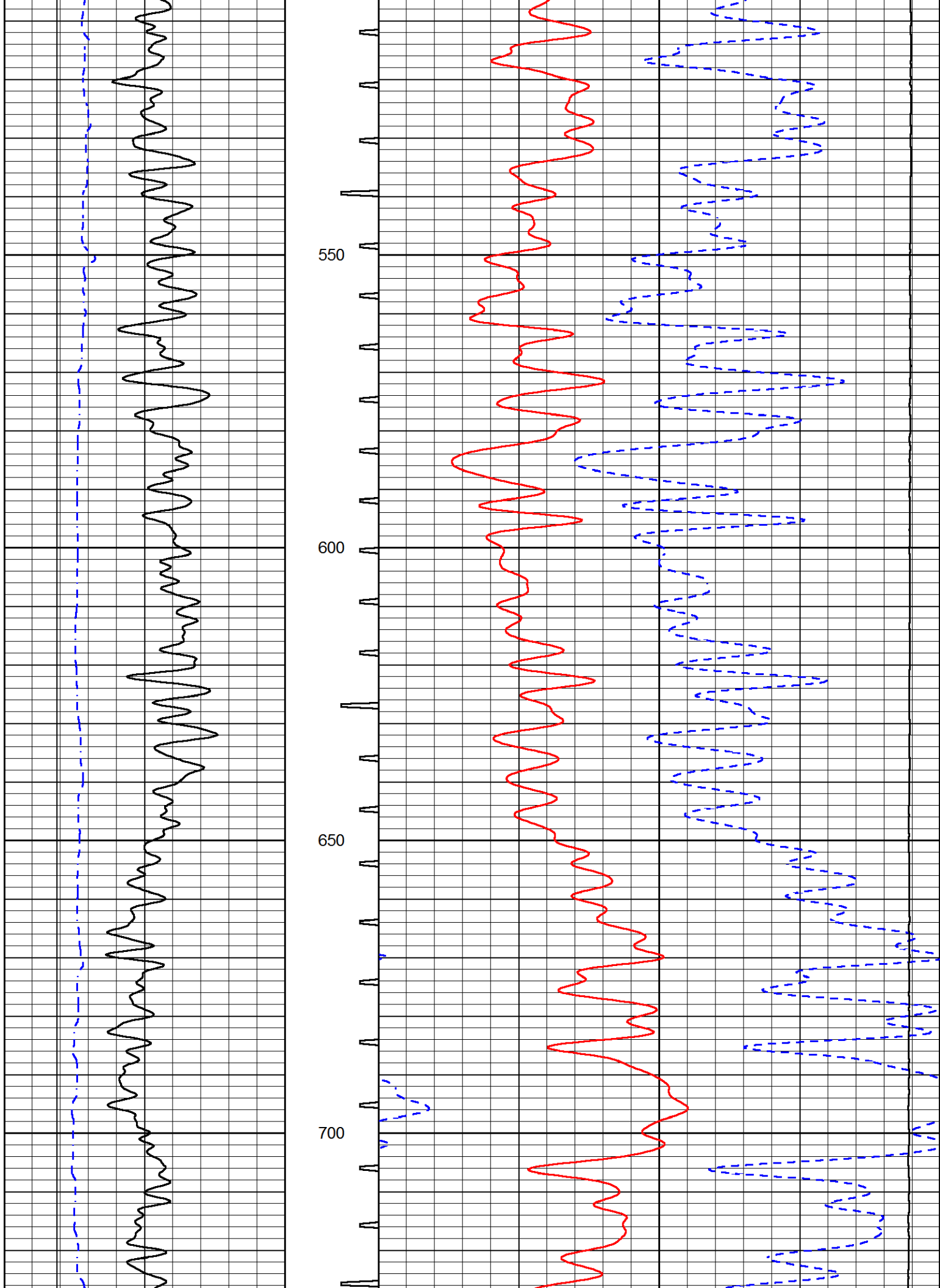


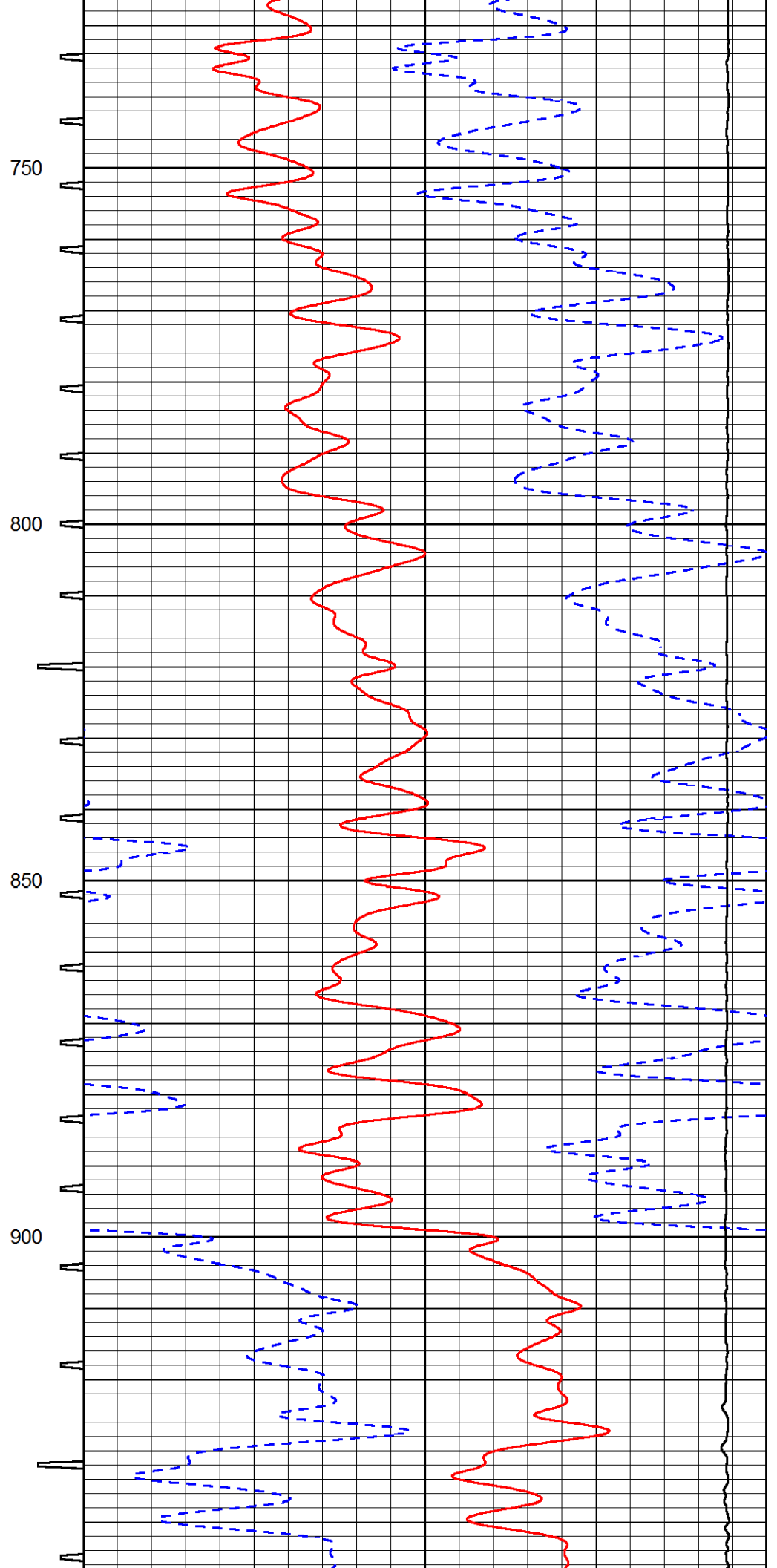
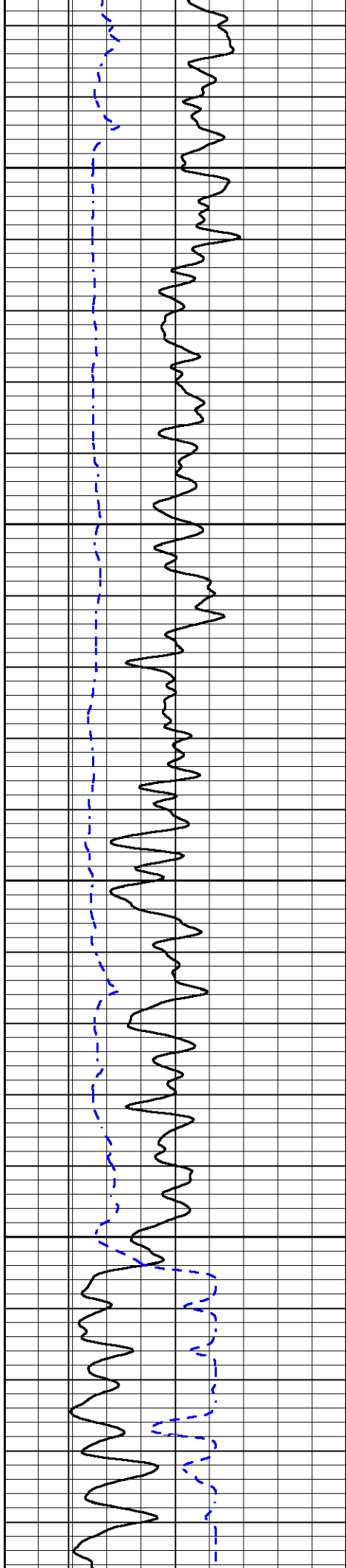
MAIN PASS

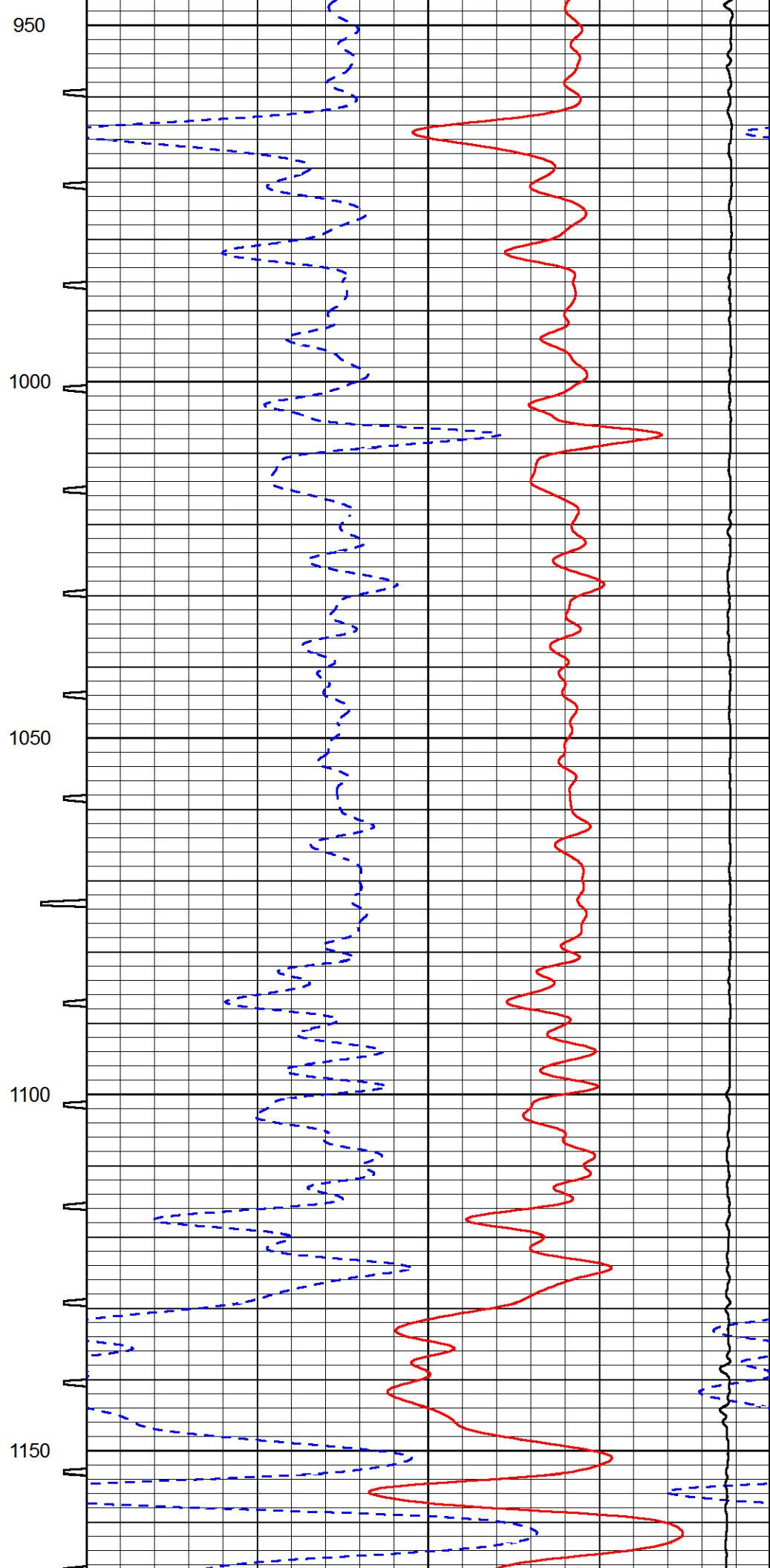
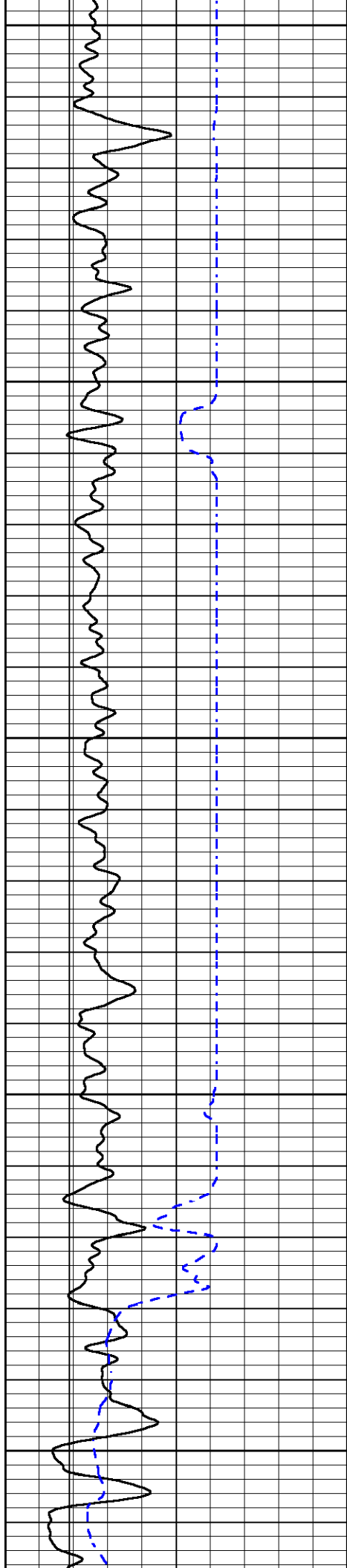
Database File stratakan_bonnewell_18_1.db
 Dataset Pathname stackml/pass3.1
 Presentation Format sonic
 Dataset Creation Sun Mar 11 21:19:25 2018
 Charted by Depth in Feet scaled 1:240

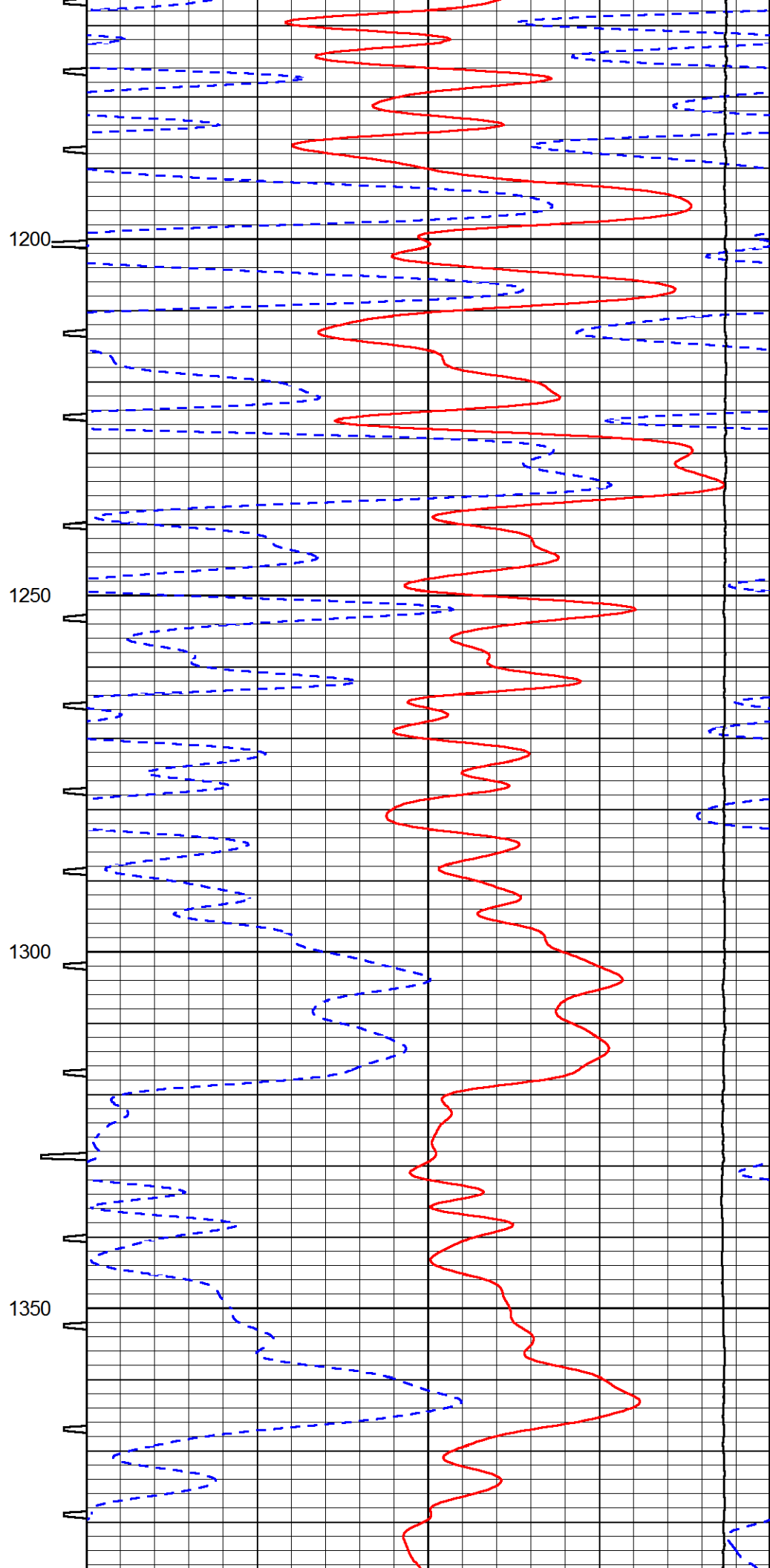
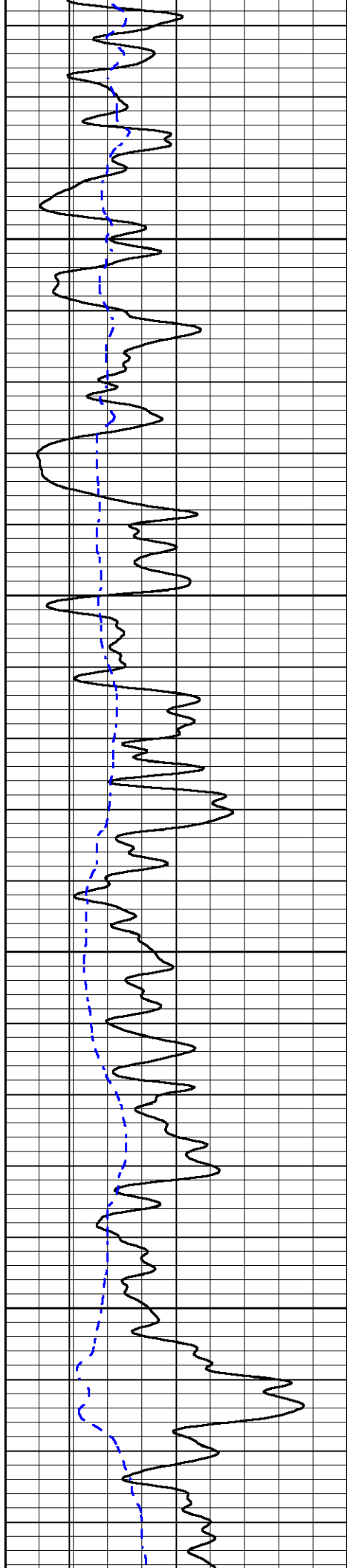
0	GAMMA RAY (GAPI)	150	SONIC INT	140	DELTA TIME (usec/ft) (usec/ft)	40
6	CALIPER (in)	16	TRAVEL TIME	30	SONIC POROSITY (pu)	-10
6	BIT SIZE	16	(msec)	15000	LINE TENSION (lb)	0

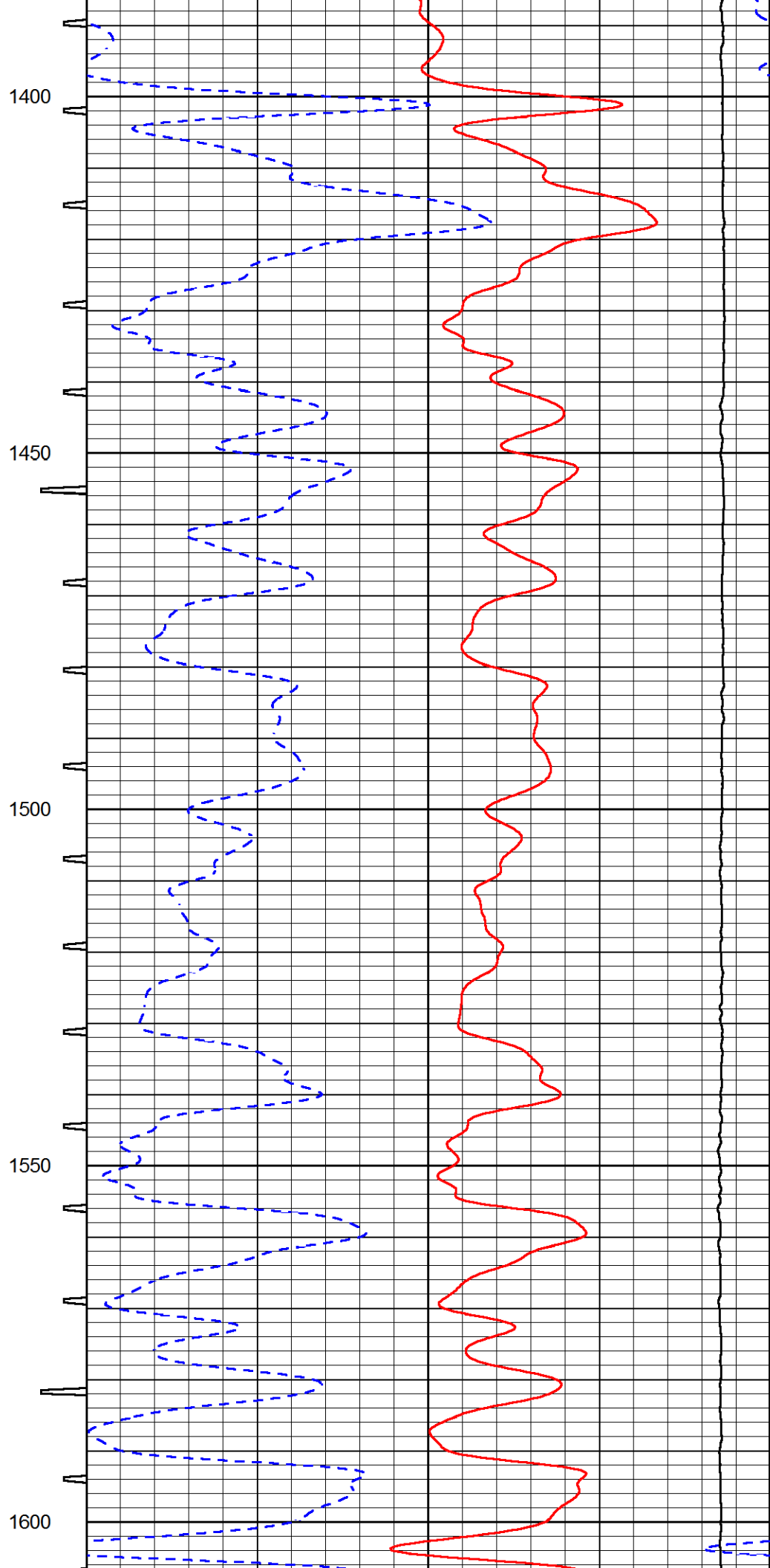
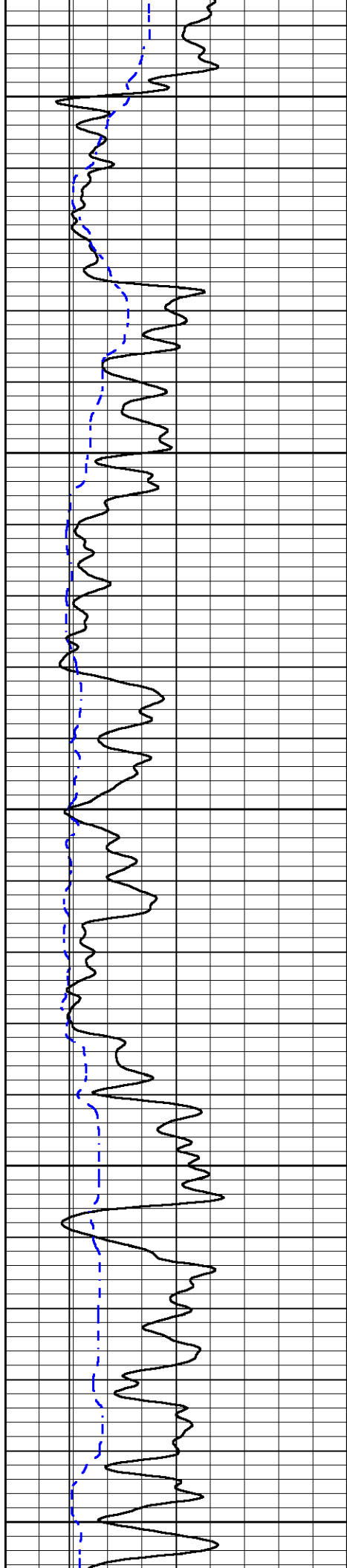


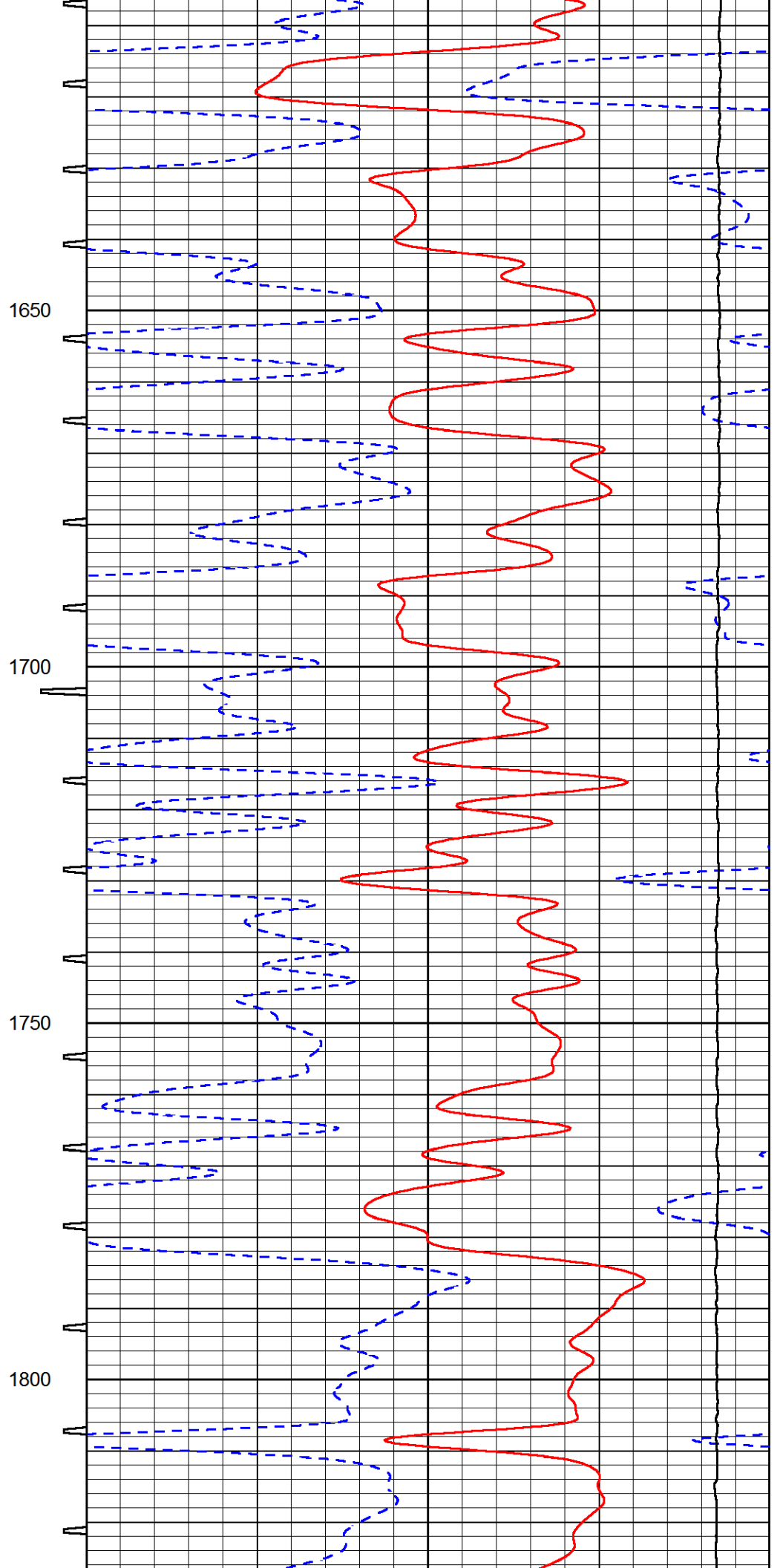
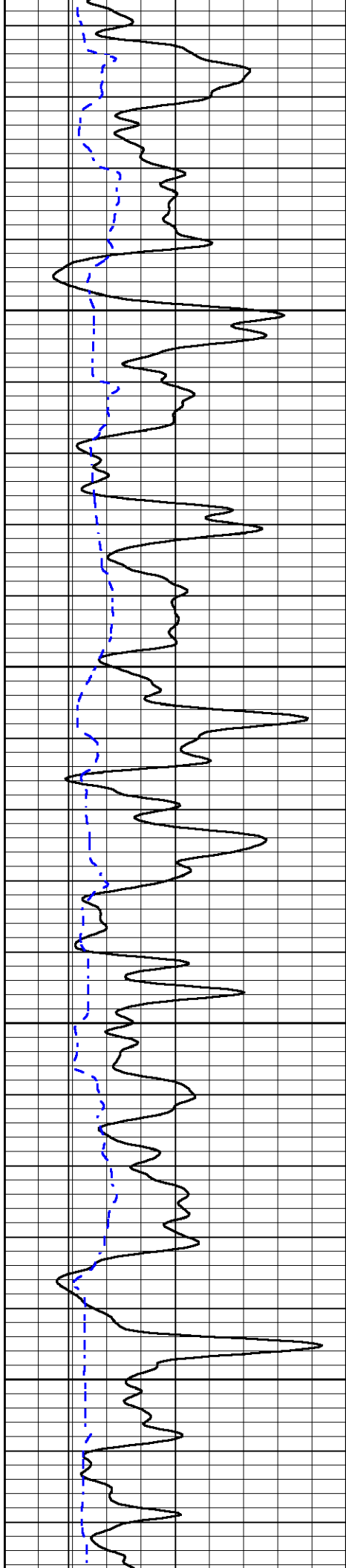


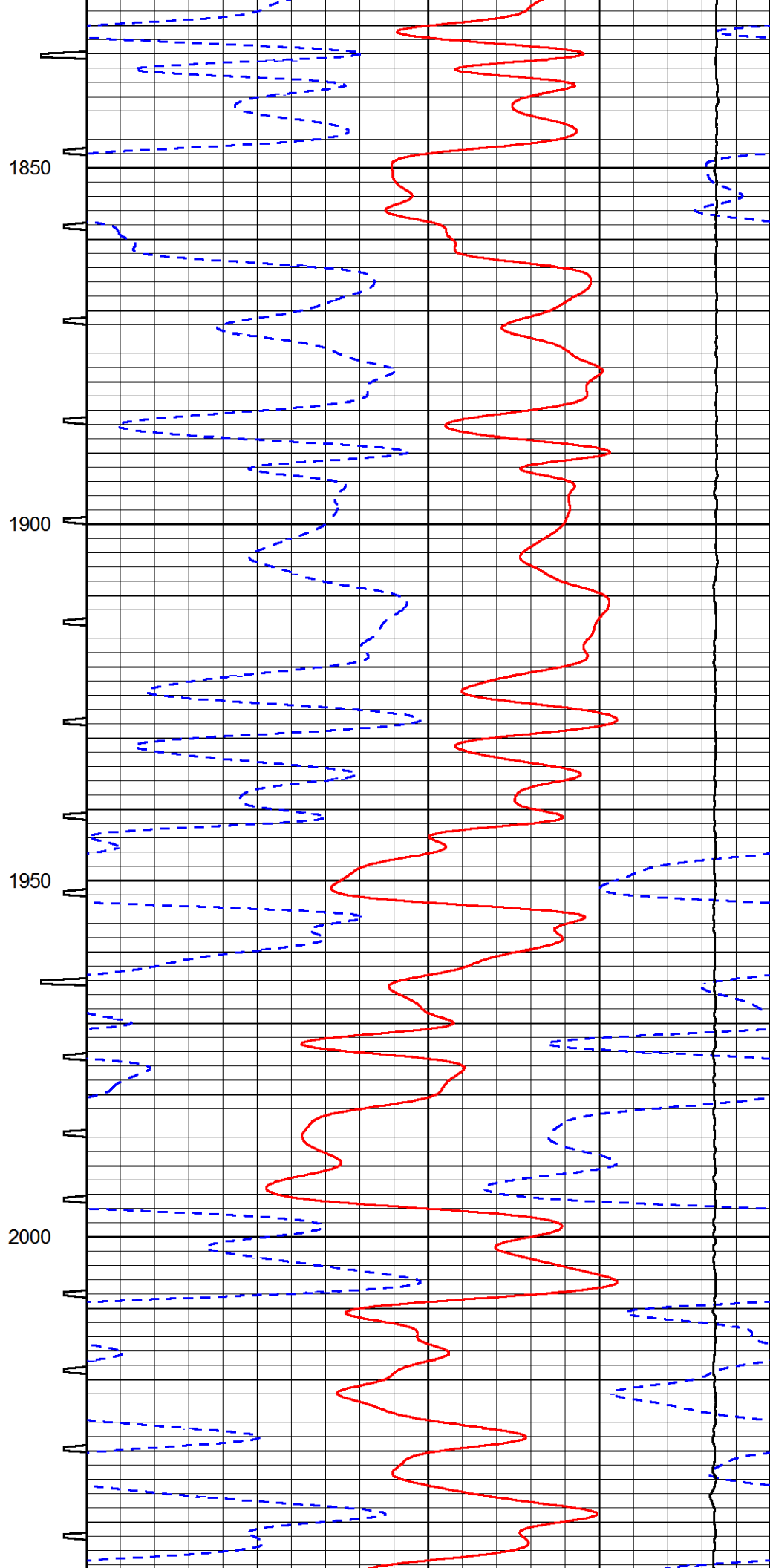
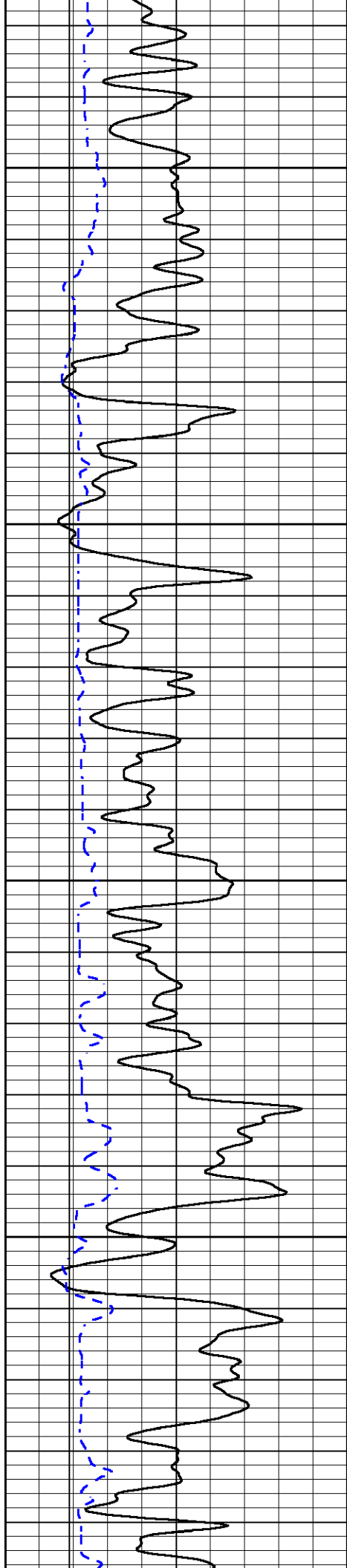


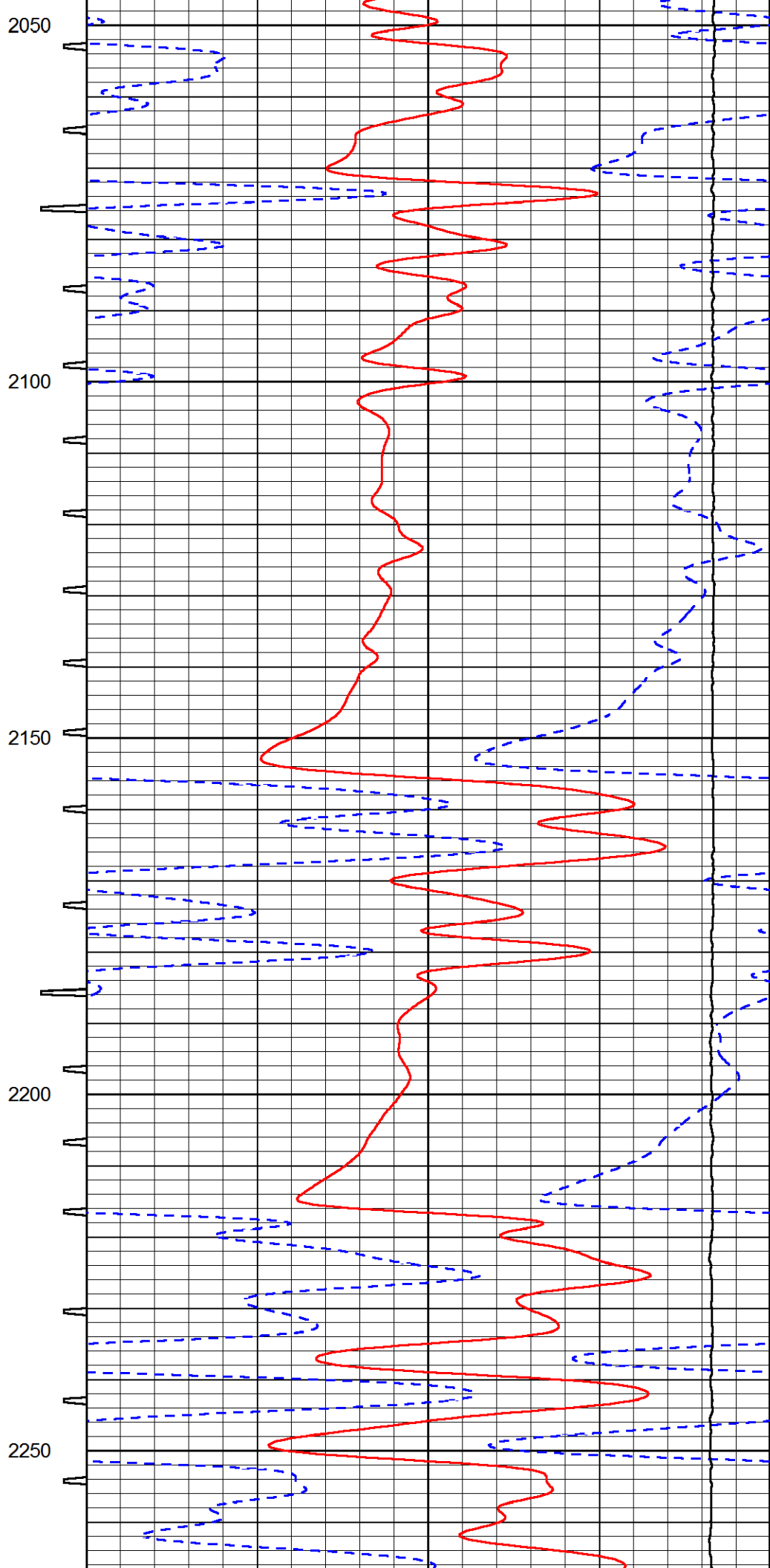
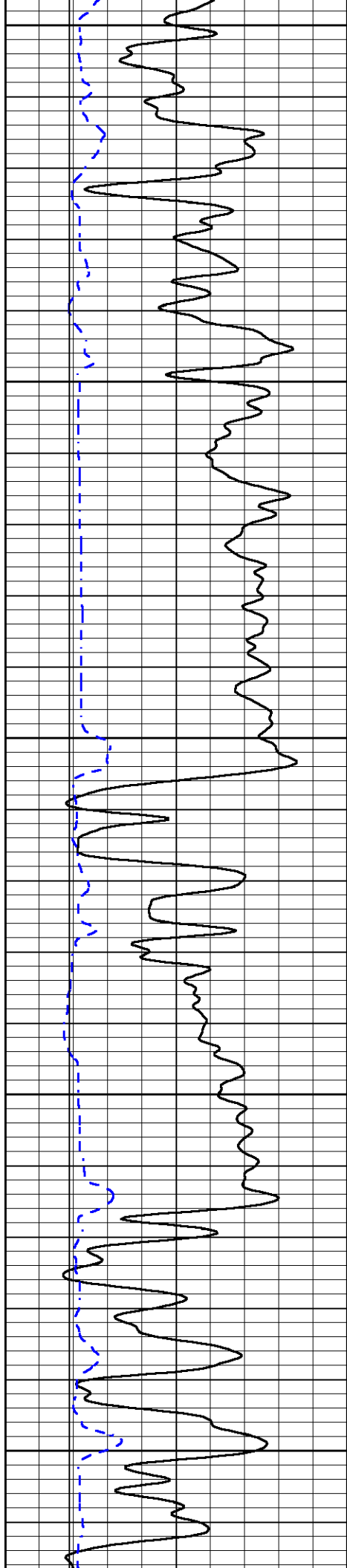


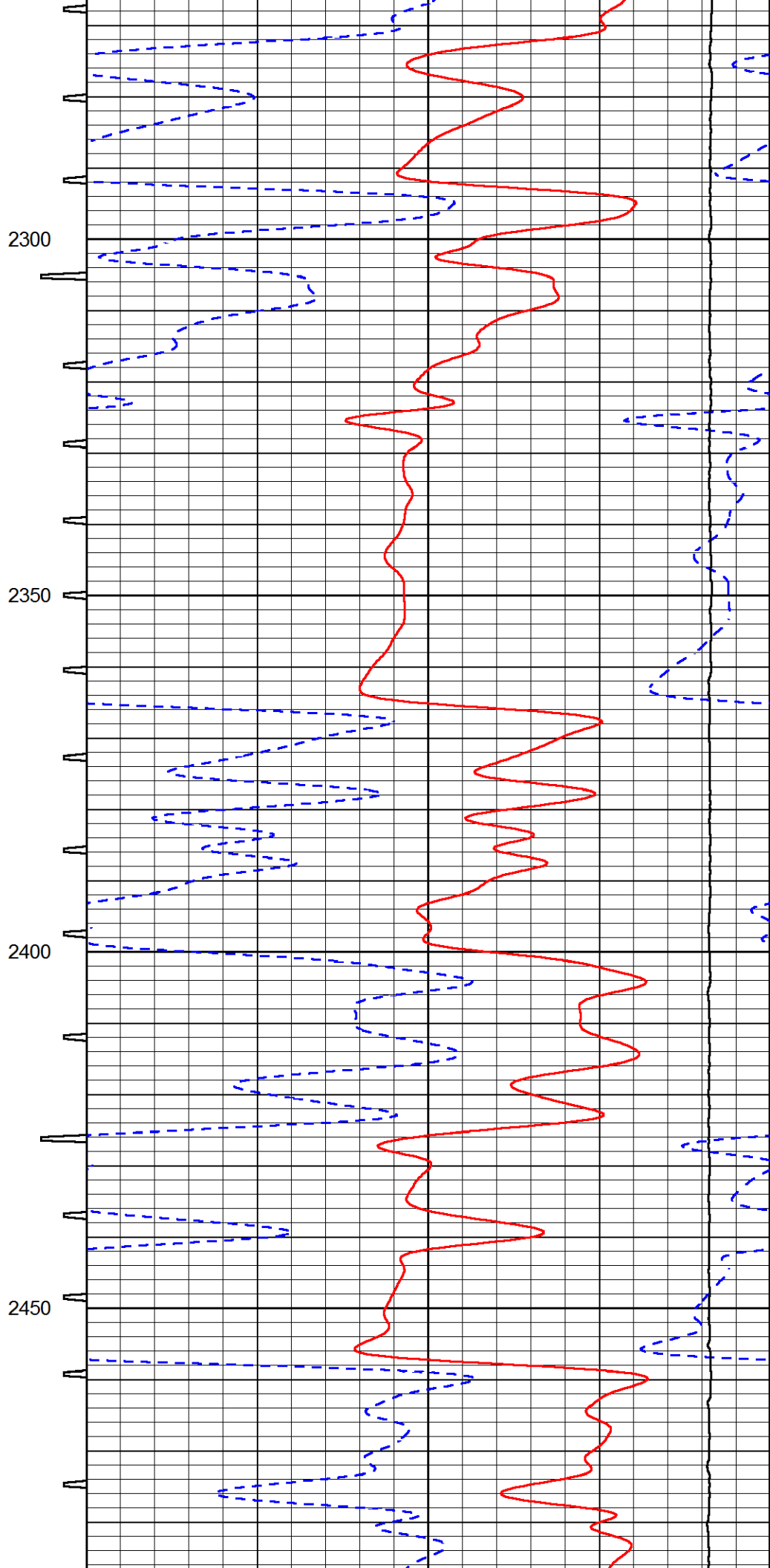
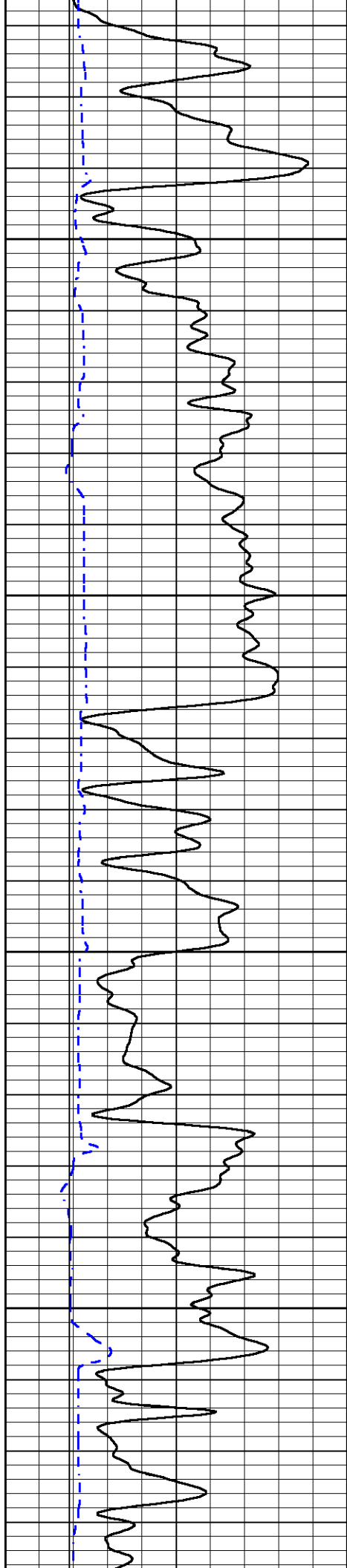


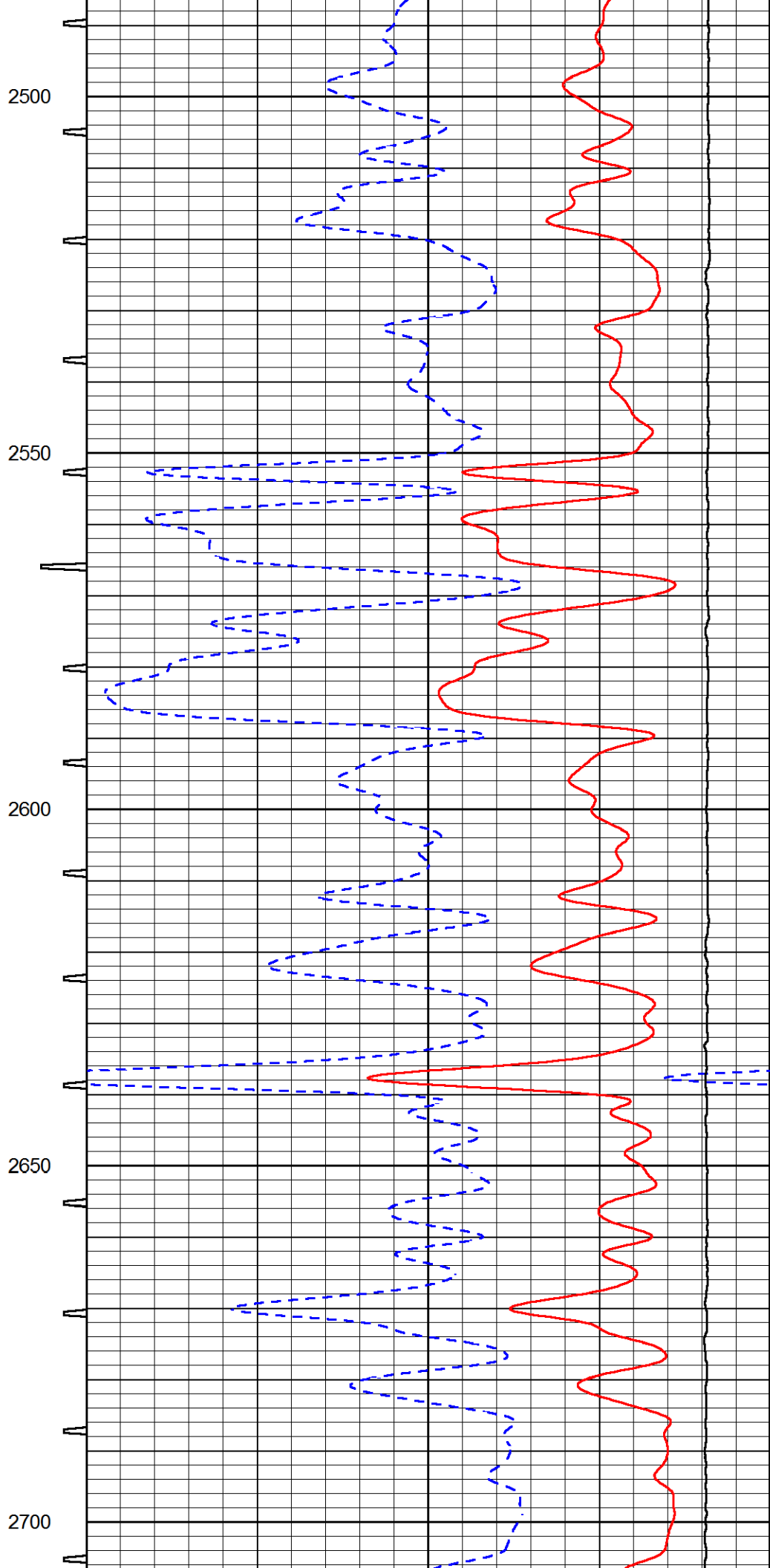
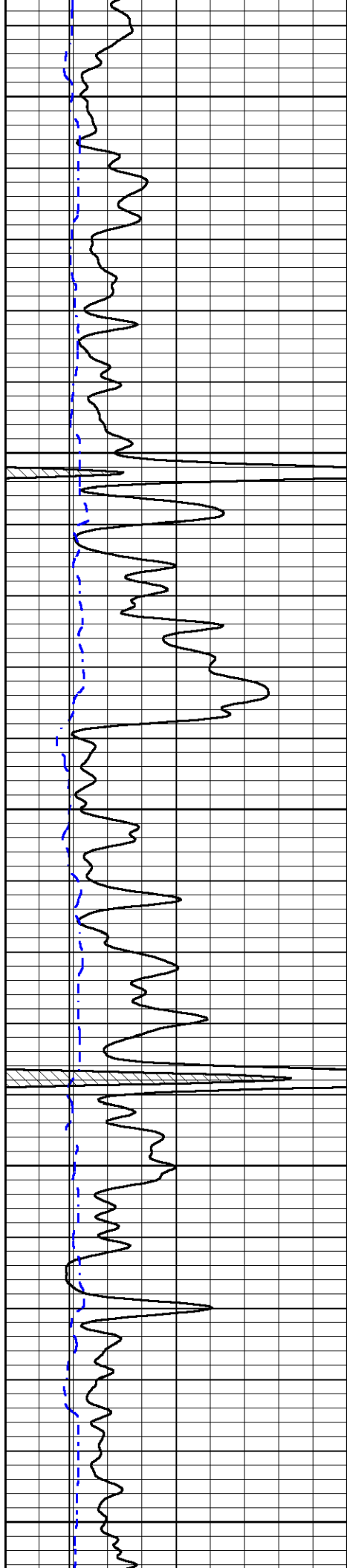


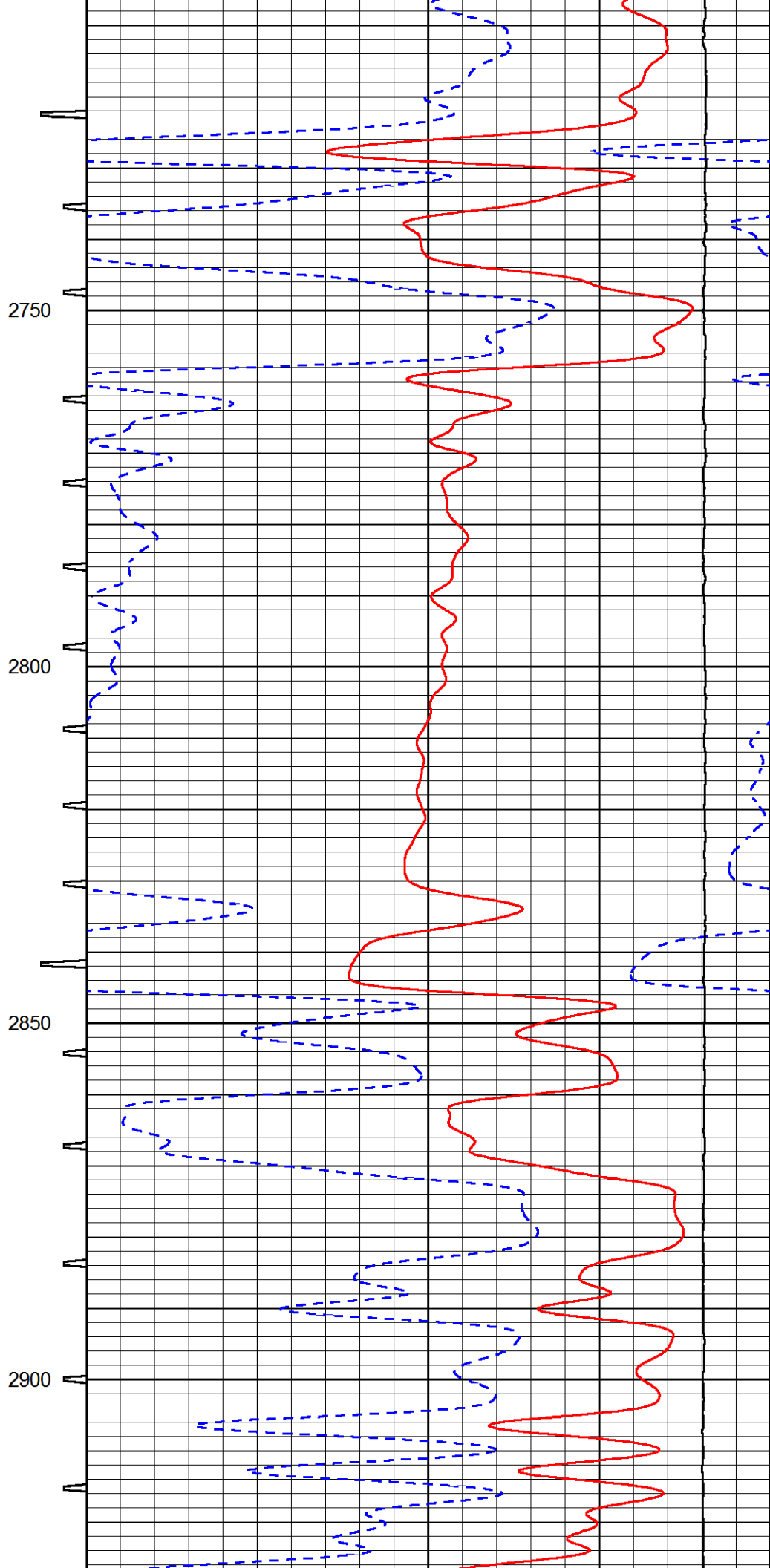
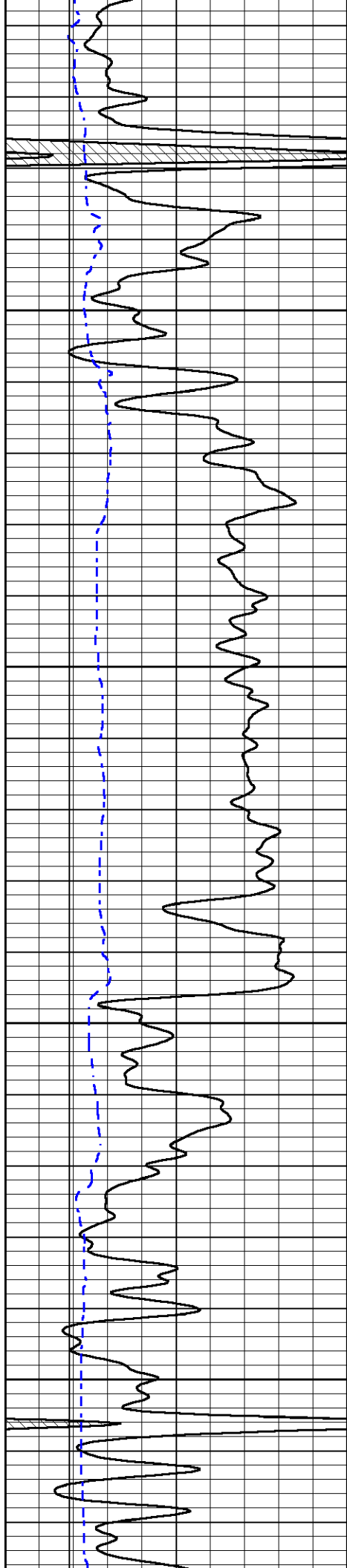


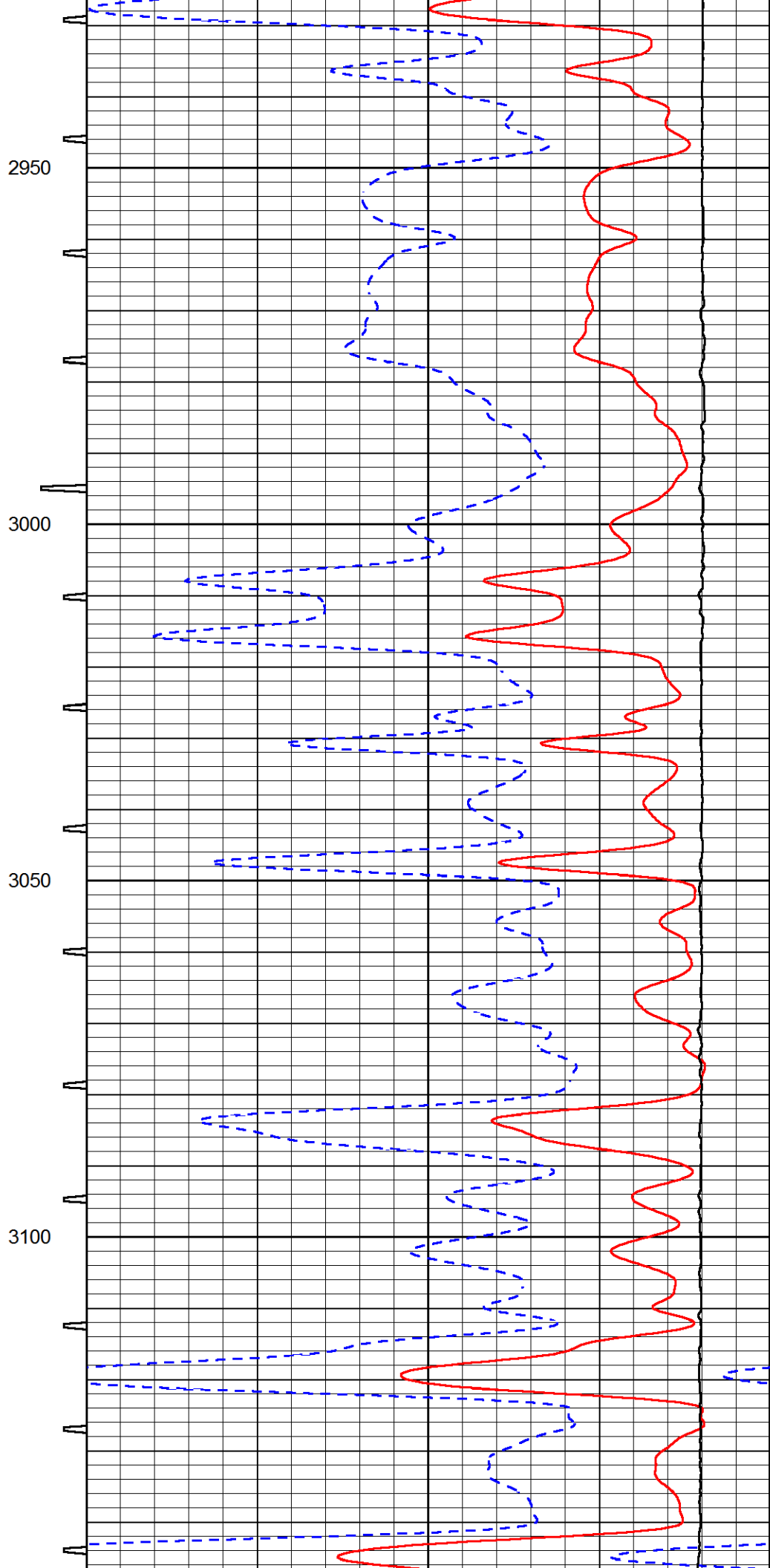
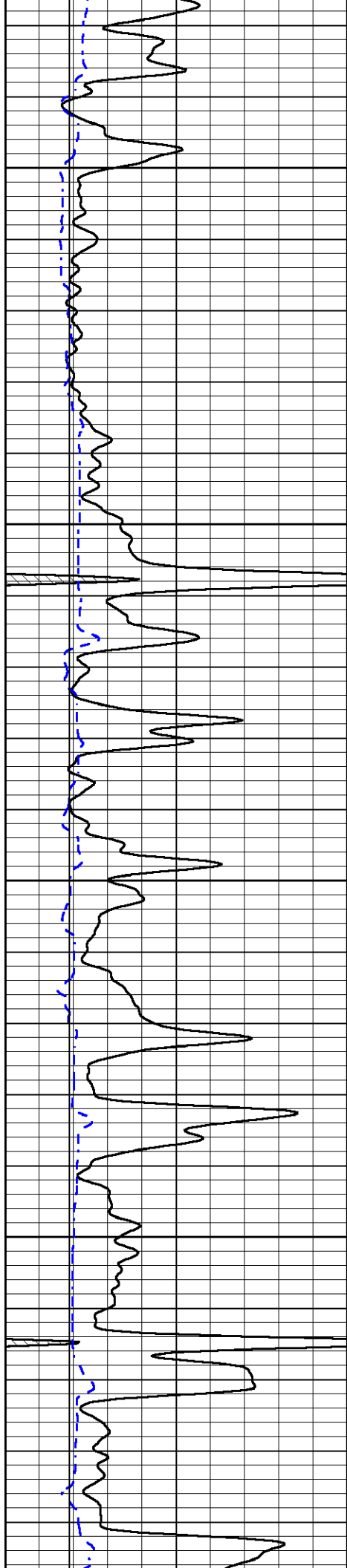


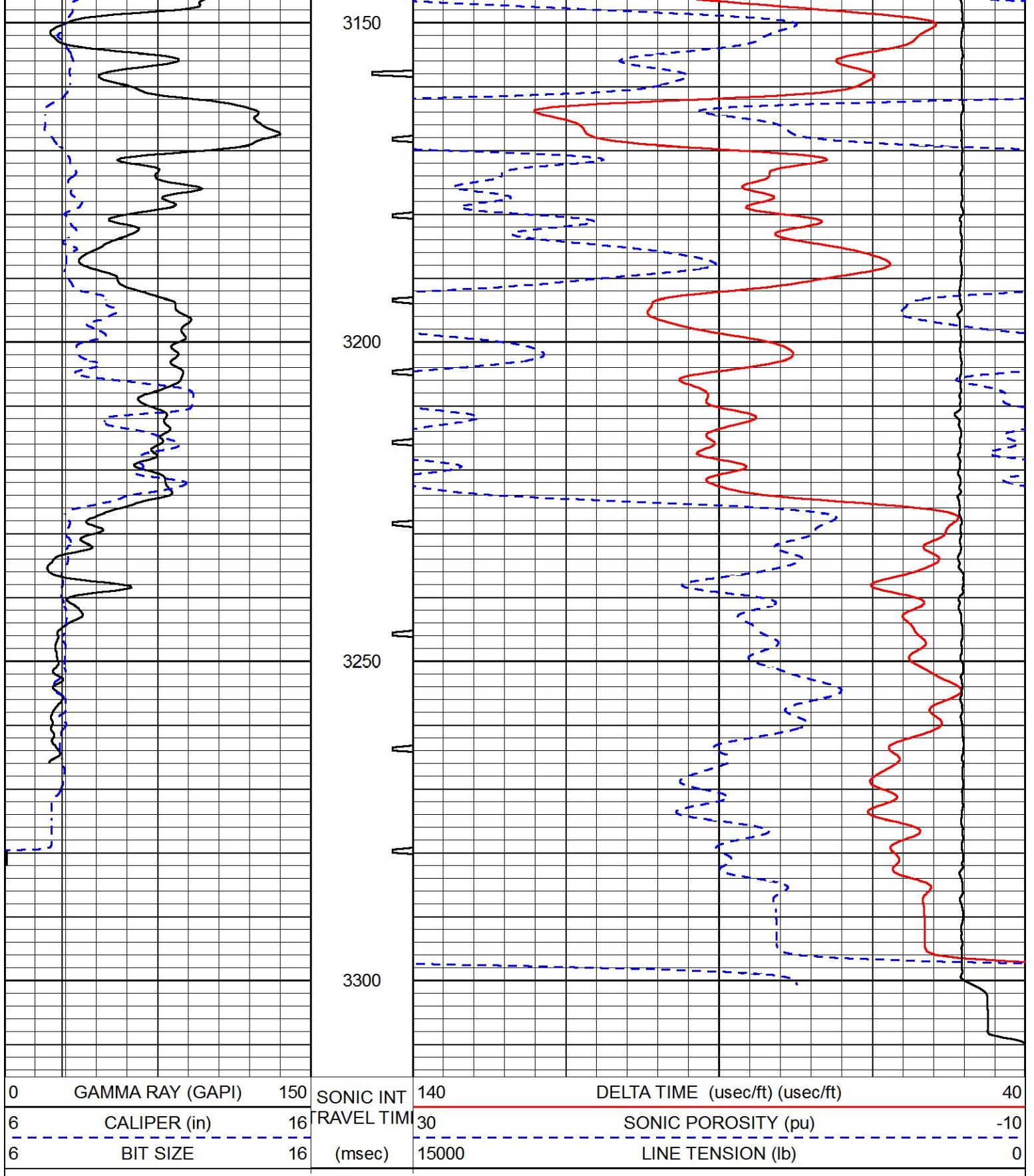








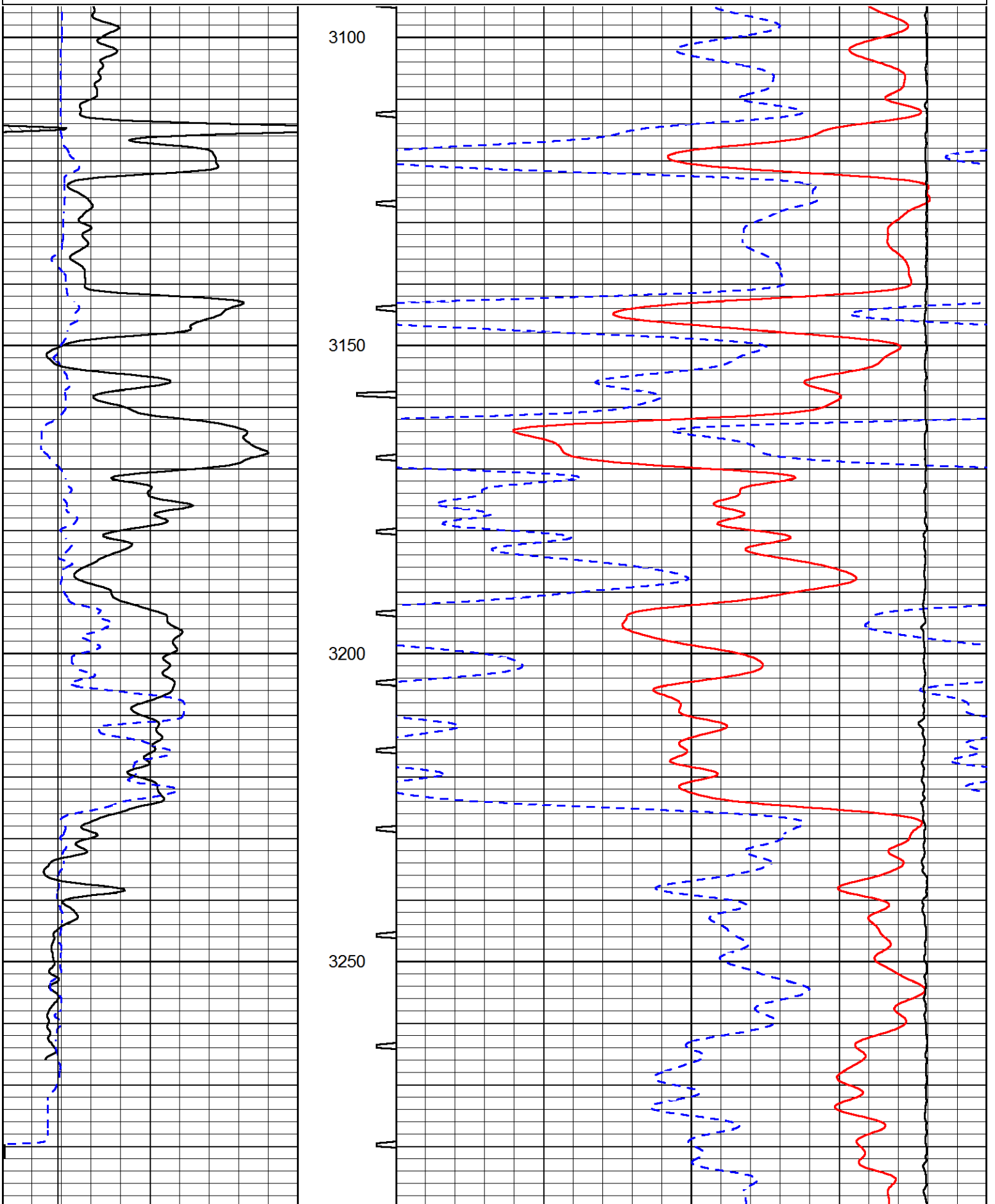


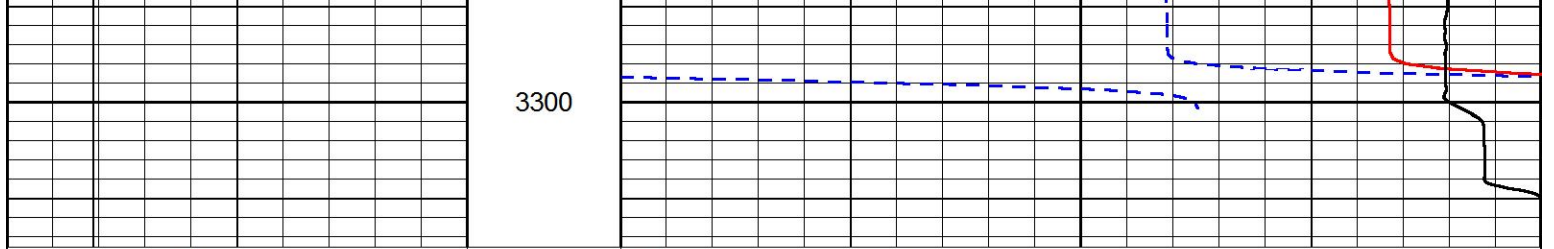


REPEAT SECTION


Database File stratakan_bonnewell_18_1.db
 Dataset Pathname stackml/pass2.1
 Presentation Format sonic

0	GAMMA RAY (GAPI)	150	SONIC INTERVAL	140	DELTA TIME (usec/ft) (usec/ft)	40
6	CALIPER (in)	16	SONIC TRAVEL TIME	30	SONIC POROSITY (pu)	-10
6	BIT SIZE	16	(msec)	15000	LINE TENSION (lb)	0





0	GAMMA RAY (GAPI)	150	SONIC INT	140	DELTA TIME (usec/ft) (usec/ft)	40
6	CALIPER (in)	16	TRAVEL TIME	30	SONIC POROSITY (pu)	-10
6	BIT SIZE	16	(msec)	15000	LINE TENSION (lb)	0

	Company	STRATAKAN EXPLORATION, INC.
	Well	BONNEWELL NO. 18-1
	Field	FARMER NORTH
	County	RICE
	State	KANSAS