



MICRORESISTIVITY LOG

Company BRITO OIL COMPANY, INC.
 Well EGELAND 1-14
 Field SRAMEK
 County SHERMAN
 State KANSAS

Company BRITO OIL COMPANY, INC.
 Well EGELAND 1-14
 Field SRAMEK
 County SHERMAN State KANSAS

Location: API #: 15-181-20610-00-00
 720' FNL & 330' FEL
 SEC 14 TWP 7S RGE 37W
 Permanent Datum GROUND LEVEL Elevation 3427'
 Log Measured From KELLY BUSHING
 Drilling Measured From KELLY BUSHING
 Other Services
 CNL/CDL
 DIL
 Elevation
 K.B. 3432'
 D.F. N/A
 G.L. 3427'

Date	2/15/2018
Run Number	TWO
Depth Driller	5050'
Depth Logger	5052'
Bottom Logged Interval	5051'
Top Log Interval	4000'
Casing Driller	8.625" @ 345'
Casing Logger	344'
Bit Size	7.875"
Type Fluid in Hole	CHEMICAL
Salinity, ppm CL	4000
Density / Viscosity	9.1 67
pH / Fluid Loss	10.5 7.6
Source of Sample	FLOWLINE
Rm @ Meas. Temp	0.70 @ 58
Rmt @ Meas. Temp	0.53 @ 58
Rmc @ Meas. Temp	0.95 @ 58
Source of Rmf / Rmc	CHARTS
Rm @ BHT	0.32 @ 127
Operating Rig Time	3 HOURS
Max Rec. Temp. F	127 DEGF
Equipment Number	108
Location	HAYS
Recorded By	IAN MABB
Witnessed By	ROBERT HENDRIX

<<< Fold Here >>>

All interpretations are opinions based on inferences from electrical or other measurements and Pioneer Wireline Services, LLC cannot and does not guarantee the accuracy or correctness of any interpretation, and Pioneer Wireline Services, LLC will not be liable or responsible for any loss, costs, damages, or expenses incurred or sustained by anyone resulting from any interpretation made by any of our officers, agents or employees.

Comments

N/A DENOTES NOT AVAILABLE OR NON-APPLICABLE.

BREWSTER, KS.
 NORTH TO RD. X , WEST TO 35
 SOUTH 1 MILE , EAST INTO

Log Measured From: KELLY BUSHING 5 Ft. Above Permanent Datum

THANK YOU FOR USING PIONEER ENERGY SERVICES
www.pioneerenergy.com 785-625-3858


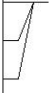
Your Pioneer Energy Services Crew	This Log Record Was Witnessed By
Engineer: IAN MABB	Primary Witness: ROBERT HENDRIX
Operator:	Secondary Witness:
Operator:	Secondary Witness:
Operator:	Secondary Witness:

Log Variables

Dataset field/well/stack/pass3.1/_vars_

Top - Bottom

A	BOREID in	BOTTEMP degF	CASEOD in	CASETHCK in	FLUIDDEN g/cc	M	MATRXDEN g/cc
1	7.875	127	5.5	0	1	2	2.71
NPORSEL	PERFS	SNDERR mmho/m	SNDERRM mmho/m	SPSHIFT mV	SRFTEMP degF	SZCOR	TDEPTH ft
Limestone	0	0	0	-255	40	Off	5052

Sensor	Offset (ft)	Schematic	Description	Length (ft)	O.D. (in)	Weight (lb)
						
			ML-Armadillo (Armadillo-1) Pengo micro log tool mandrel with Armadillo Electronics	5.00	3.50	100.00
MCAL	1.00					
MI	1.00					
MN	1.00					

Dataset: brito_egeland_1_14.db: field/well/MICRO/pass2
 Total length: 5.00 ft
 Total weight: 100.00 lb
 O.D.: 3.50 in

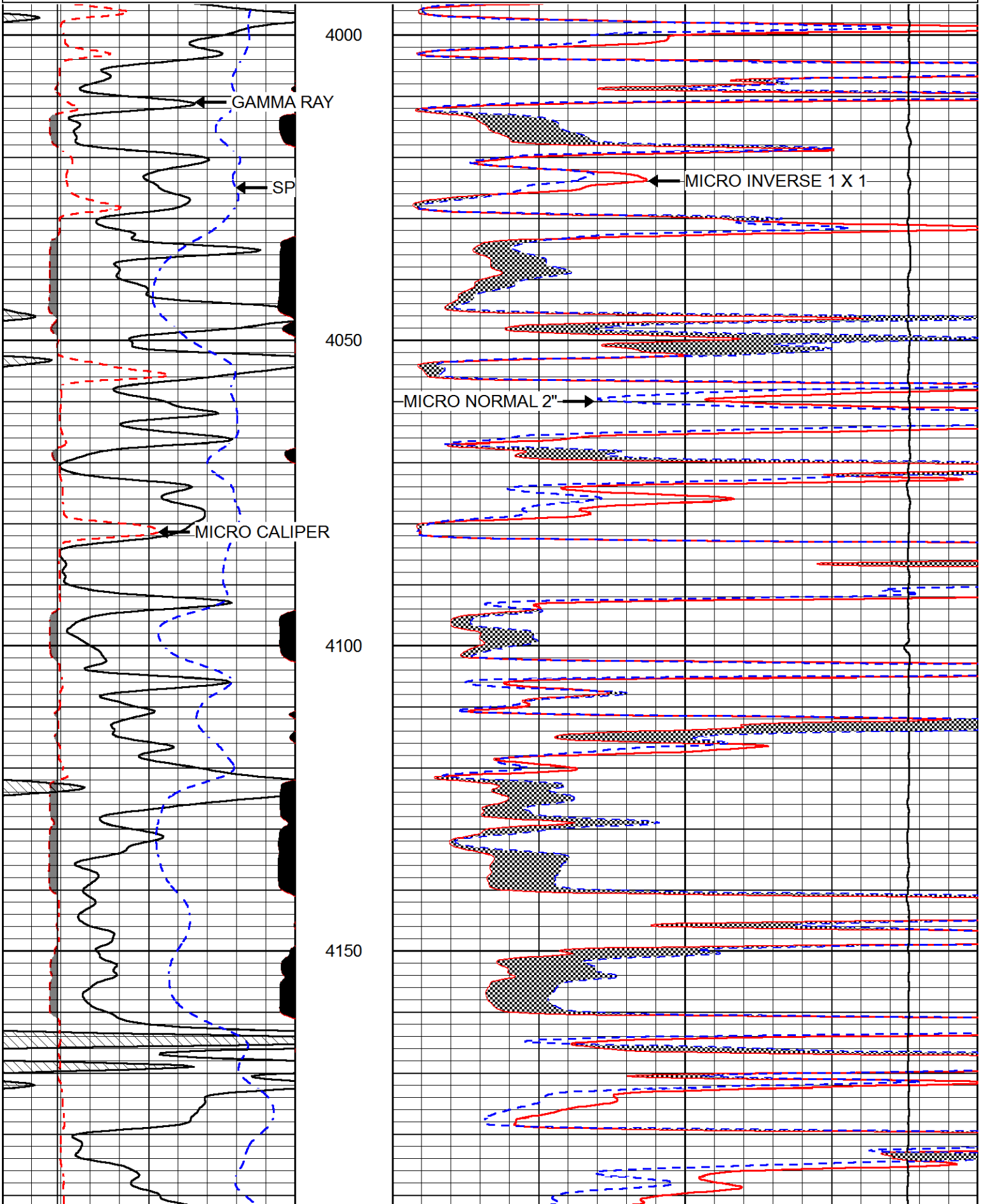


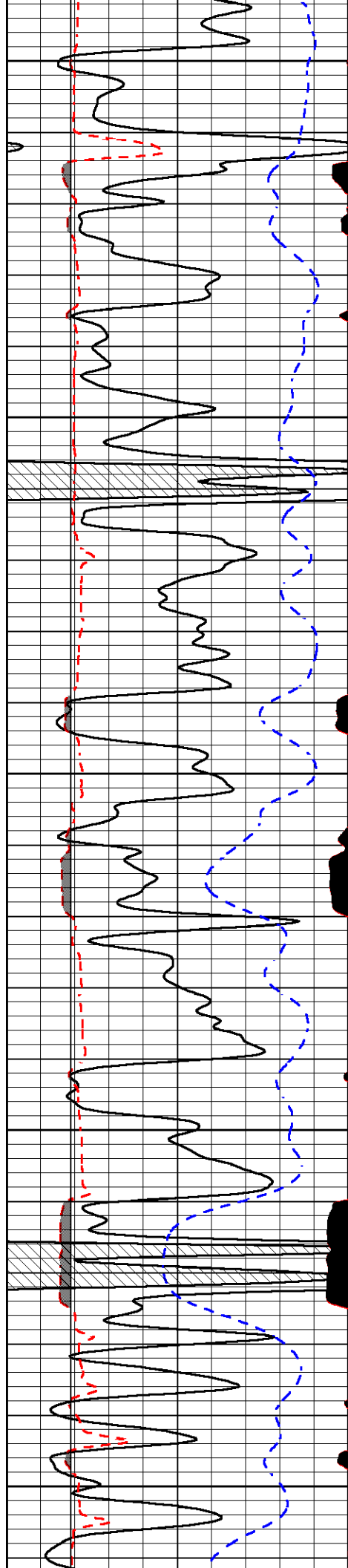
MAIN PASS

Database File: brito_egeland_1_14.db
 Dataset Pathname: stack/pass3.1
 Presentation Format: micro
 Dataset Creation: Thu Feb 15 13:11:30 2018
 Charted by: Depth in Feet scaled 1:240

0	GAMMA RAY (GAPI)	150
6	MICRO CALIPER (in)	16
6	BIT SIZE (in)	16
-200	SP (mV)	0

0	MICRO INVERSE 1 X 1 (Ohm-m)	40
0	MICRO NORMAL 2" (Ohm-m)	40
15000	LINE TENSION (lb)	0





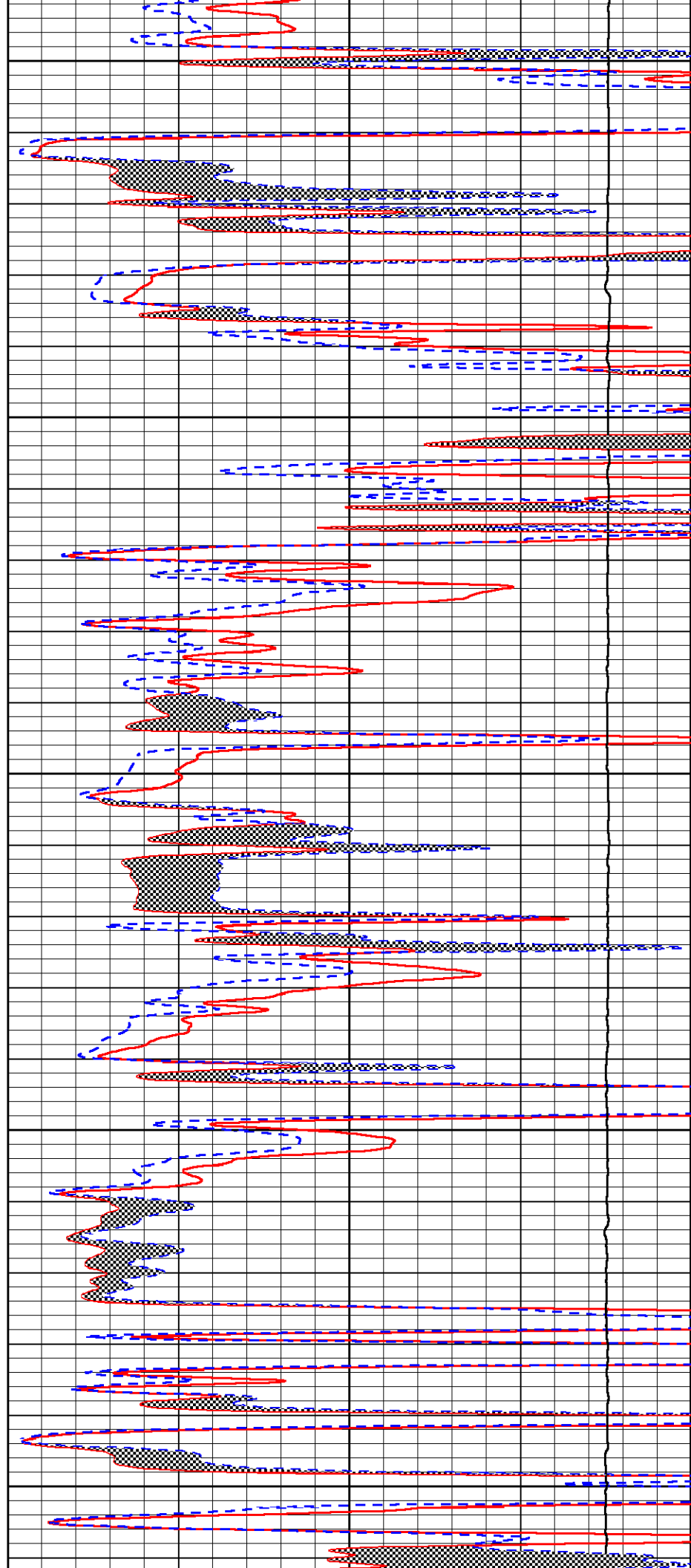
4200

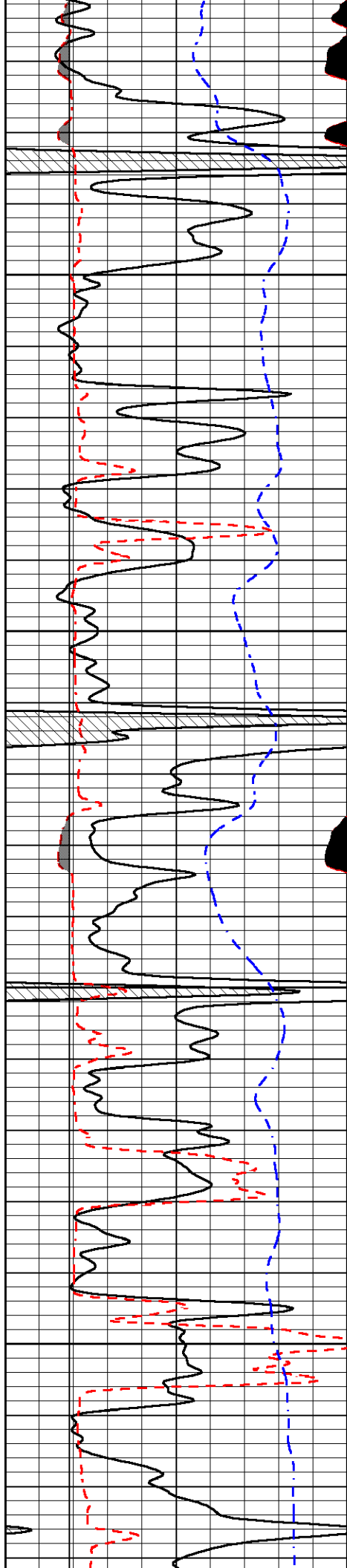
4250

4300

4350

4400



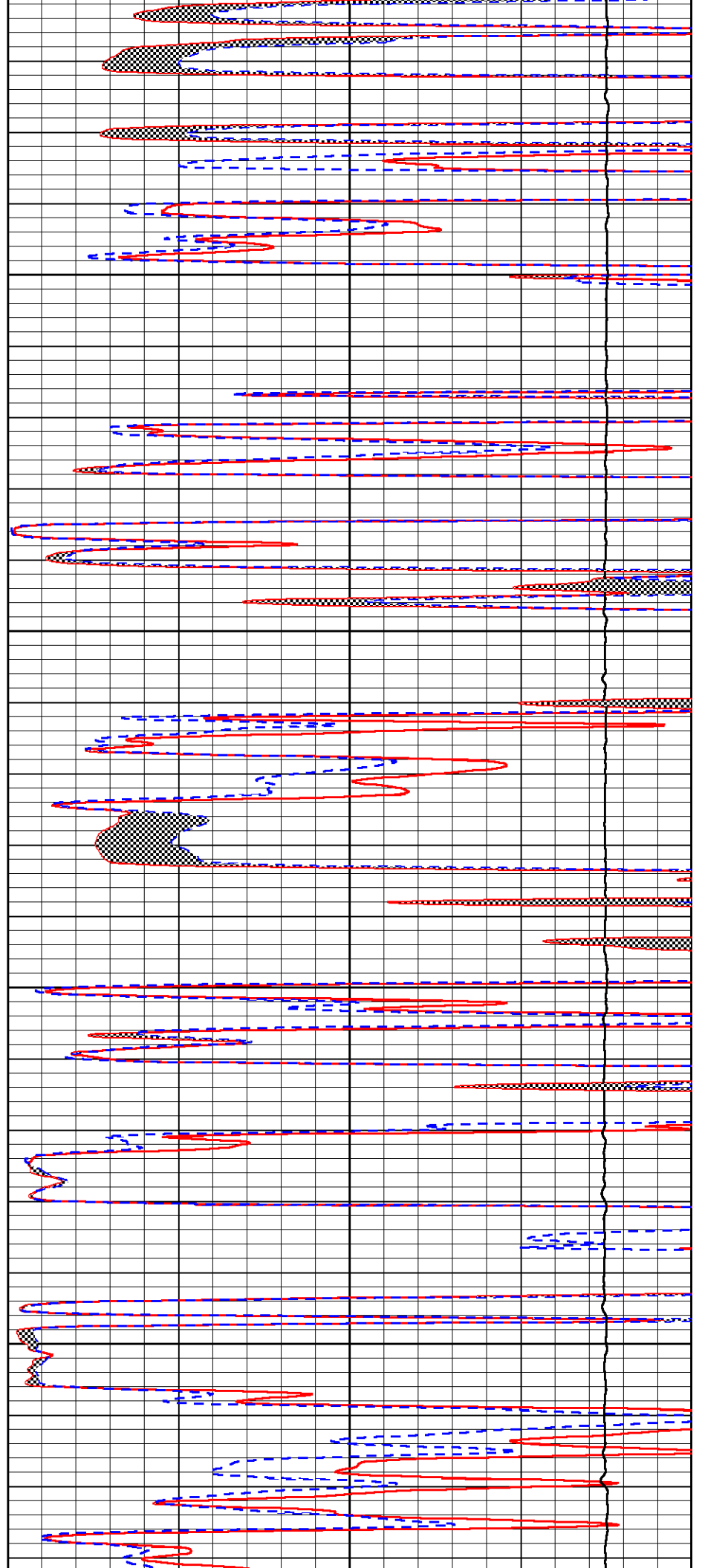


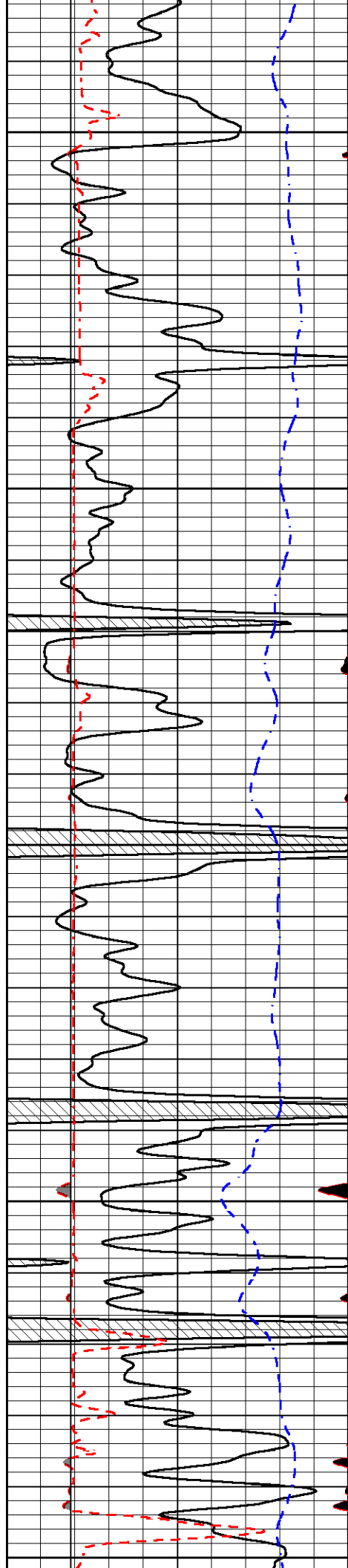
4450

4500

4550

4600





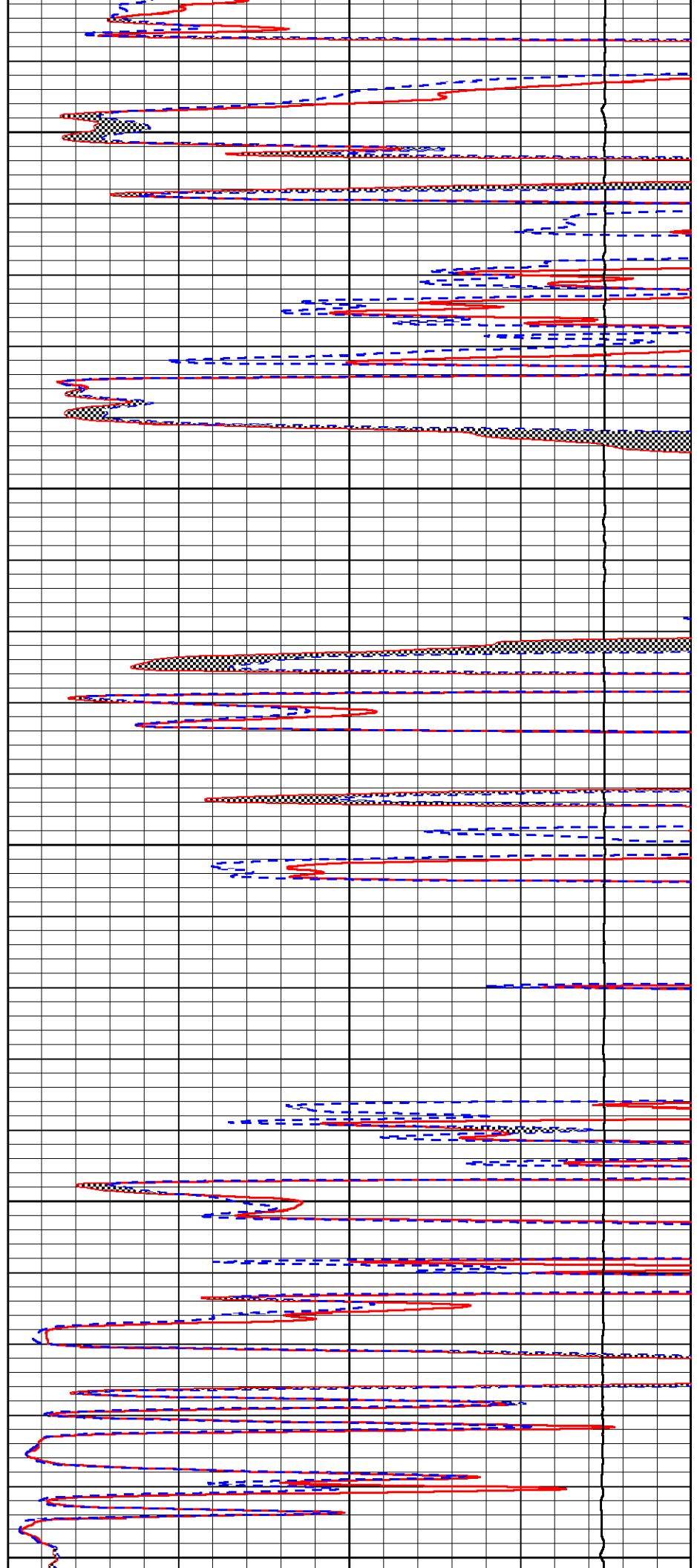
4650

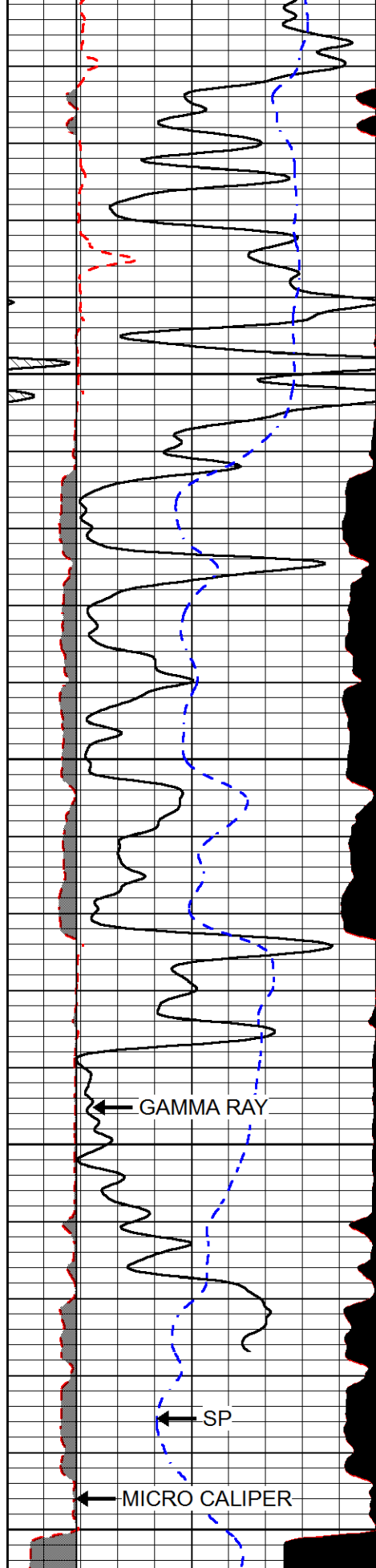
4700

4750

4800

4850





4900

4950

5000

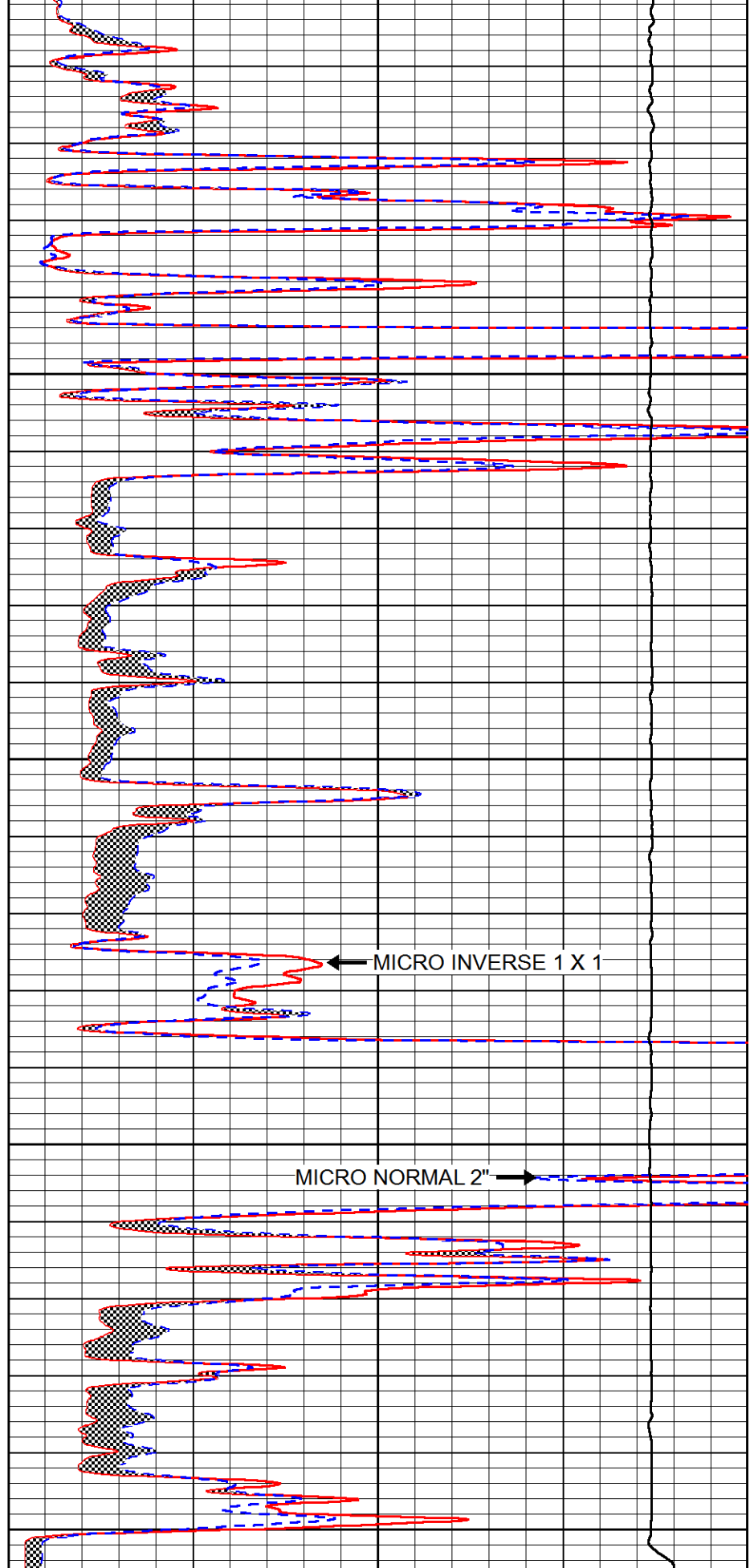
5050

GAMMA RAY

SP

MICRO CALIPER

0	GAMMA RAY (GAPI)	150
6	MICRO CALIPER (in)	16
6	BIT SIZE (in)	16
200	SP (mV)	0



MICRO INVERSE 1 X 1

MICRO NORMAL 2"

0	MICRO INVERSE 1 X 1 (Ohm-m)	40
0	MICRO NORMAL 2" (Ohm-m)	40
15000	LINE TENSION (lb)	0

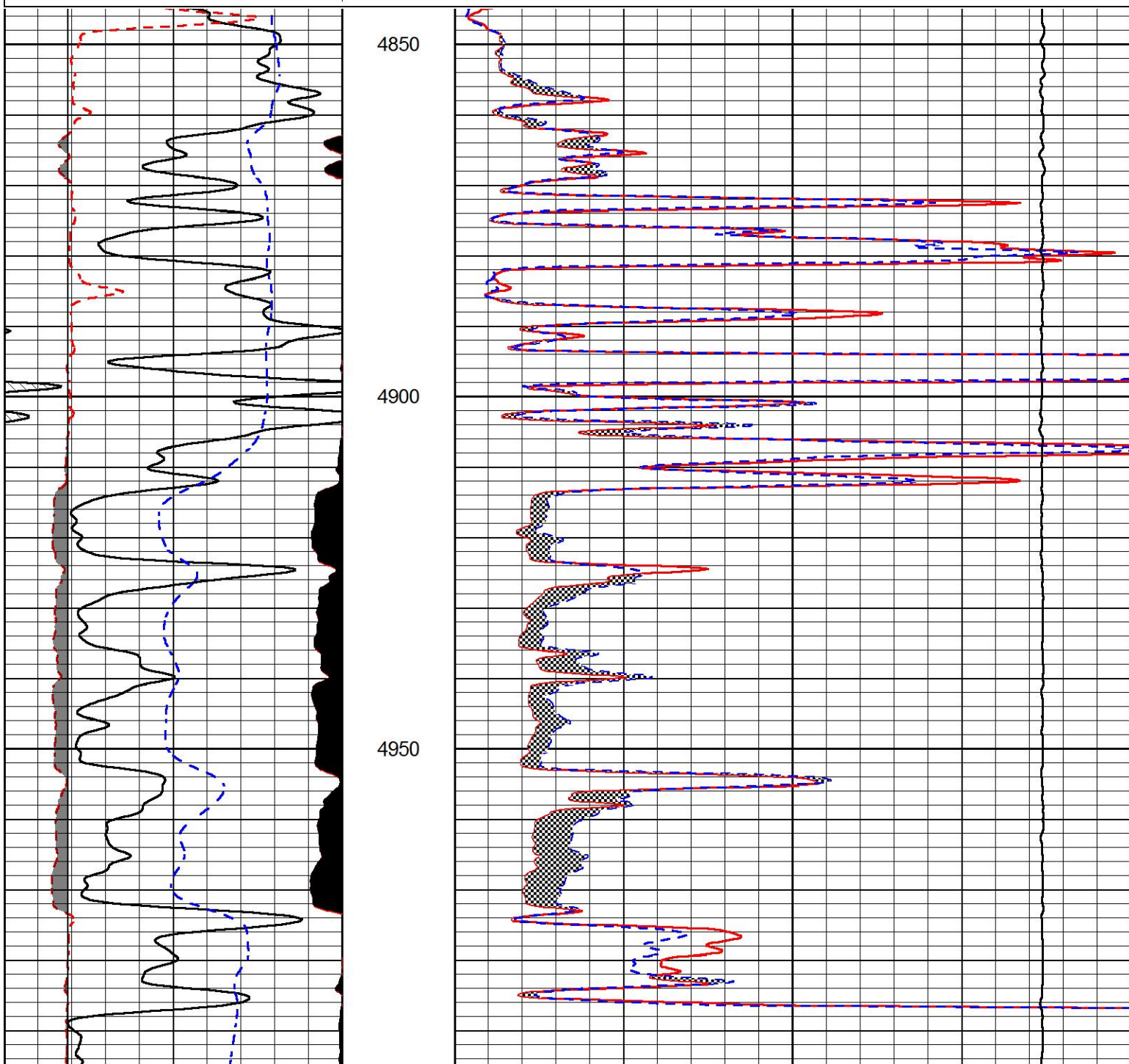


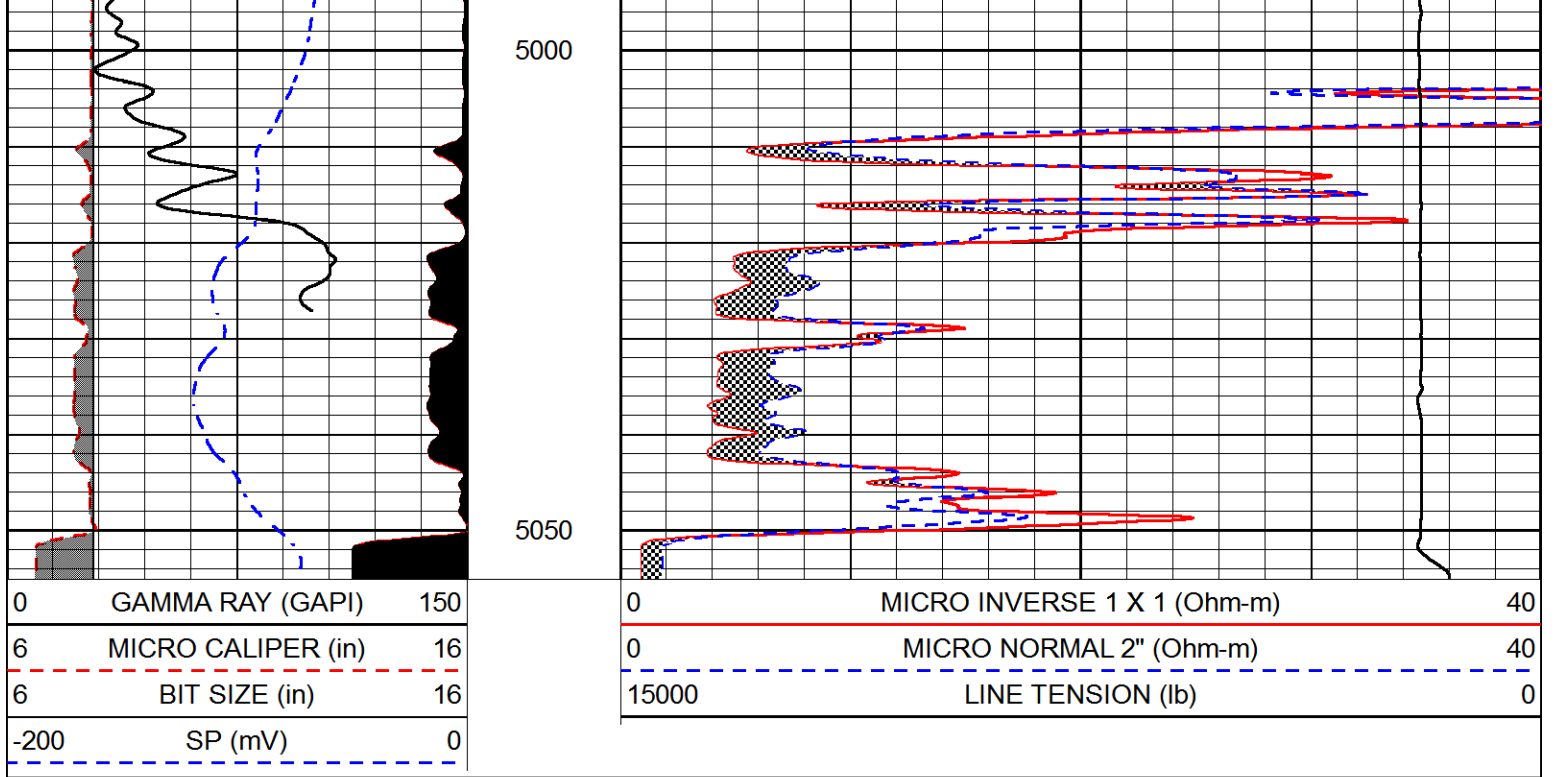
REPEAT SECTION

Database File brito_egeland_1_14.db
 Dataset Pathname stack/pass2.1
 Presentation Format micro
 Dataset Creation Thu Feb 15 13:11:53 2018
 Charted by Depth in Feet scaled 1:240

0	GAMMA RAY (GAPI)	150
6	MICRO CALIPER (in)	16
6	BIT SIZE (in)	16
-200	SP (mV)	0

0	MICRO INVERSE 1 X 1 (Ohm-m)	40
0	MICRO NORMAL 2" (Ohm-m)	40
15000	LINE TENSION (lb)	0





Calibration Report

Database File brito_egeland_1_14.db
 Dataset Pathname stack/pass3.1
 Dataset Creation Thu Feb 15 13:11:30 2018

Dual Induction Calibration Report

Serial-Model: PSI 978-M&W
 Calibration Performed: Sun Feb 04 11:50:02 2018

Loop:	Readings		References			Results	
	Air	Loop	Air	Loop		Gain	Offset
Deep	178.615	710.235	0.000	255.800	mmho/m	0.550	-40.500
Medium	161.982	1441.110	0.000	255.800	mmho/m	0.420	-37.000

Compensated Density Calibration Report

Serial-Model: 168-986-M&W
 Source / Verifier: /
 Master Calibration Performed: Tue Apr 11 17:07:47 2017

Master Calibration

	Density		Far Detector	Near Detector	
Magnesium	1.755	g/cc	4691.86	4818.19	cps
Aluminum	2.685	g/cc	859.57	3020.22	cps
Spine Angle = 74.61			Density/Spine Ratio = 0.528		
	Size		Reading		
Small Ring	4.00	in	1.00		
Large Ring	14.00	in	1.20		

Compensated Neutron Calibration Report

Serial Number: tk10-MW
 Tool Model: M&W
 Calibration Performed: Wed Nov 16 11:21:36 2016

Detector	Readings	Target	Normalization
Short Space	6240.00 cps	1000.00 cps	1.6025
Long Space	460.00 cps	1000.00 cps	1.9500

Gamma Ray Calibration Report

Serial Number: 89-M&W
 Tool Model: M&W
 Calibration Performed: Tue Apr 11 17:08:01 2017

Calibrator Value: 1000.0 GAPI

Background Reading: 0.0 cps
 Calibrator Reading: 6.2 cps

Sensitivity: 0.5200 GAPI/cps



PIONEER
 Pioneer Energy Services

Company BRITO OIL COMPANY, INC.
 Well EGELAND 1-14
 Field SRAMEK
 County SHERMAN
 State KANSAS