



# DUAL INDUCTION LOG

**Company** BRITO OIL COMPANY, INC.  
**Well** EGELAND 1-14  
**Field** SRAMEK  
**County** SHERMAN **State** KANSAS

**Company** BRITO OIL COMPANY, INC.  
**Well** EGELAND 1-14  
**Field** SRAMEK  
**County** SHERMAN  
**State** KANSAS

**Location:** API #: 15-181-20610-00-00  
 720' FNL & 330' FEL  
 SEC 14 TWP 7S RGE 37W  
 Permanent Datum GROUND LEVEL Elevation 3427'  
 Log Measured From KELLY BUSHING  
 Drilling Measured From KELLY BUSHING  
 Other Services: CNL/CDL MEL  
 Elevation: K.B. 3432', D.F. N/A, G.L. 3427'

Date	21/5/2018
Run Number	ONE
Depth Driller	5050'
Depth Logger	5052'
Bottom Logged Interval	5051'
Top Log Interval	300'
Casing Driller	8.625" @ 345'
Casing Logger	344'
Bit Size	7.875"
Type Fluid in Hole	CHEMICAL
Salinity, ppm CL	4000
Density / Viscosity	9.1 67
pH / Fluid Loss	10.5 7.6
Source of Sample	FLOWLINE
Rm @ Meas. Temp	0.70 @ 58
Rmt @ Meas. Temp	0.53 @ 58
Rmc @ Meas. Temp	0.95 @ 58
Source of Rmf / Rmc	CHARTS
Rm @ BHT	0.32 @ 127
Operating Rig Time	3 HOURS
Max Rec. Temp. F	127 DEGF
Equipment Number	108
Location	HAYS
Recorded By	IAN MABB
Witnessed By	ROBERT HENDRIX

<<< Fold Here >>>

All interpretations are opinions based on inferences from electrical or other measurements and Pioneer Wireline Services, LLC cannot and does not guarantee the accuracy or correctness of any interpretation, and Pioneer Wireline Services, LLC will not be liable or responsible for any loss, costs, damages, or expenses incurred or sustained by anyone resulting from any interpretation made by any of our officers, agents or employees.

**Comments**

N/A DENOTES NOT AVAILABLE OR NON-APPLICABLE.

BREWSTER, KS.  
 NORTH TO RD. X , WEST TO 35  
 SOUTH 1 MILE , EAST INTO

Log Measured From: KELLY BUSHING 5 Ft. Above Permanent Datum

THANK YOU FOR USING PIONEER ENERGY SERVICES  
[www.pioneerenergy.com](http://www.pioneerenergy.com) 785-625-3858


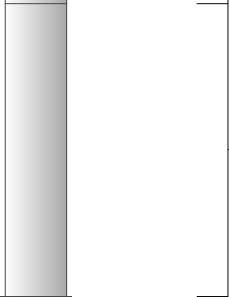
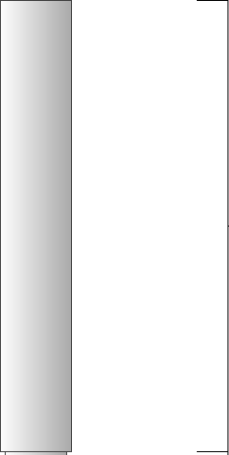

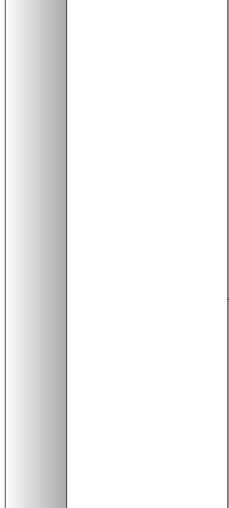
<b>Your Pioneer Energy Services Crew</b> Engineer: IAN MABB Operator: Operator: Operator:	<b>This Log Record Was Witnessed By</b> Primary Witness: ROBERT HENDRIX Secondary Witness: Secondary Witness: Secondary Witness:
---	--

# Log Variables

DatabaseC:\ProgramData\Warrior\Data\brito\_egeland\_1\_14.db  
 Dataset field/well/stack/pass3.1/\_vars\_

## Top - Bottom

A	BOREID in	BOTTEMP degF	CASEOD in	CASETHCK in	FLUIDDEN g/cc	M	MATRXDEN g/cc
1	7.875	127	5.5	0	1	2	2.71
NPORSEL	PERFS	SNDERR mmho/m	SNDERRM mmho/m	SPSHIFT mV	SRFTEMP degF	SZCOR	TDEPTH ft
Limestone	0	0	0	-255	40	Off	5052

Sensor	Offset (ft)	Schematic	Description	Length (ft)	O.D. (in)	Weight (lb)
GR	33.00		GR-M&W (89-M&W)	3.00	3.50	50.00
CNLSC CNSSC	29.90 29.15		CNT-M&W (tk10-MW)	5.50	3.50	100.00
LSD DCAL SSD	20.85 20.83 20.35		CDL-M&W (168-986)	8.50	4.00	250.00
RLL3 RLL3F	15.80 15.79					
CILD	8.00		DIL-M&W (PSI 978)	18.50	3.50	220.00

CILM 4.70

SP 0.20

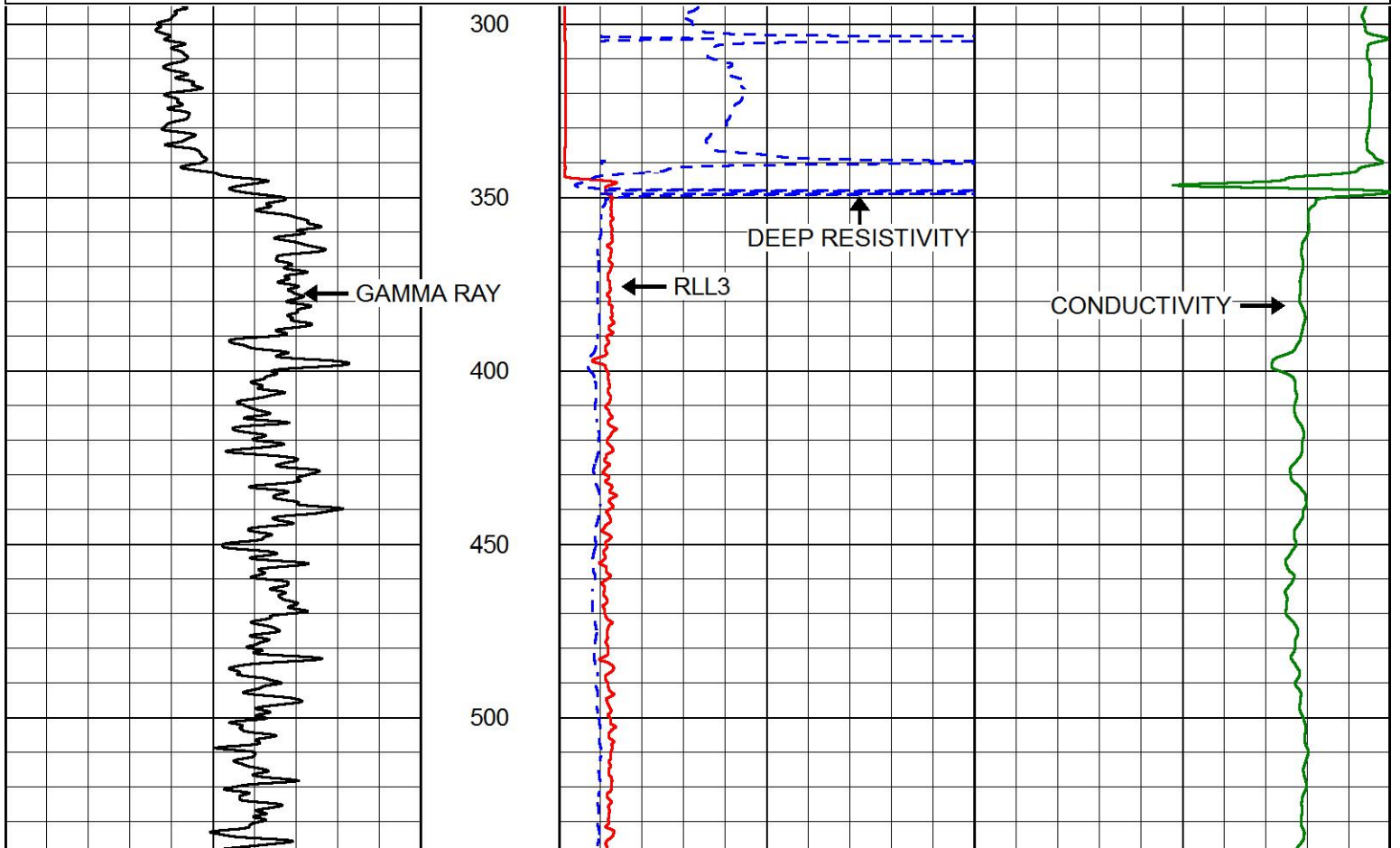
Dataset: brito\_egeland\_1\_14.db: field/well/stack/pass3.1  
 Total length: 35.50 ft  
 Total weight: 620.00 lb  
 O.D.: 4.00 in

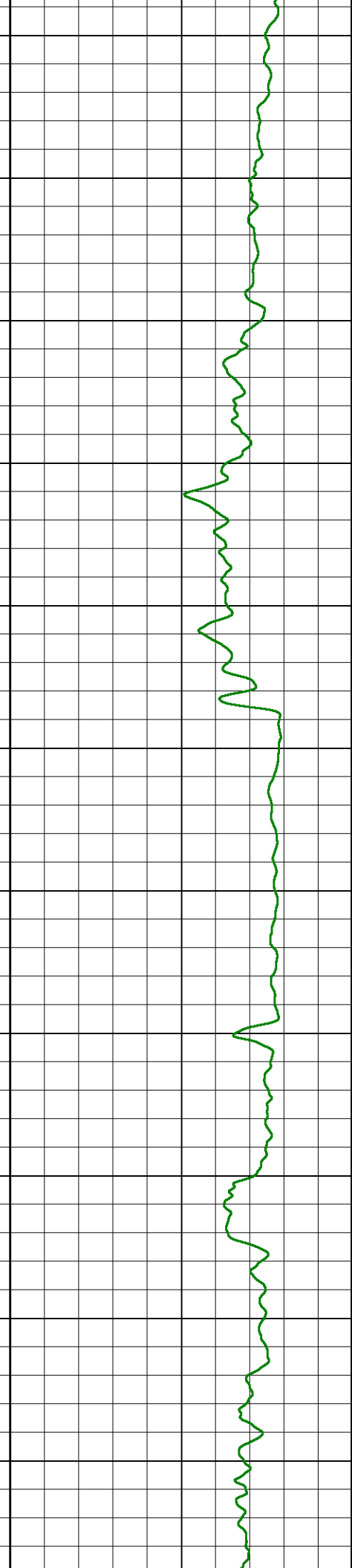
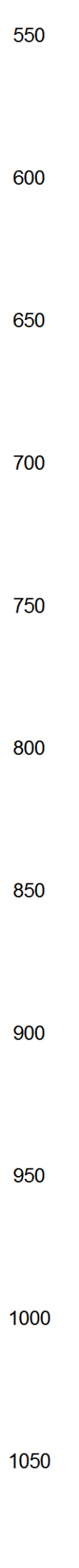
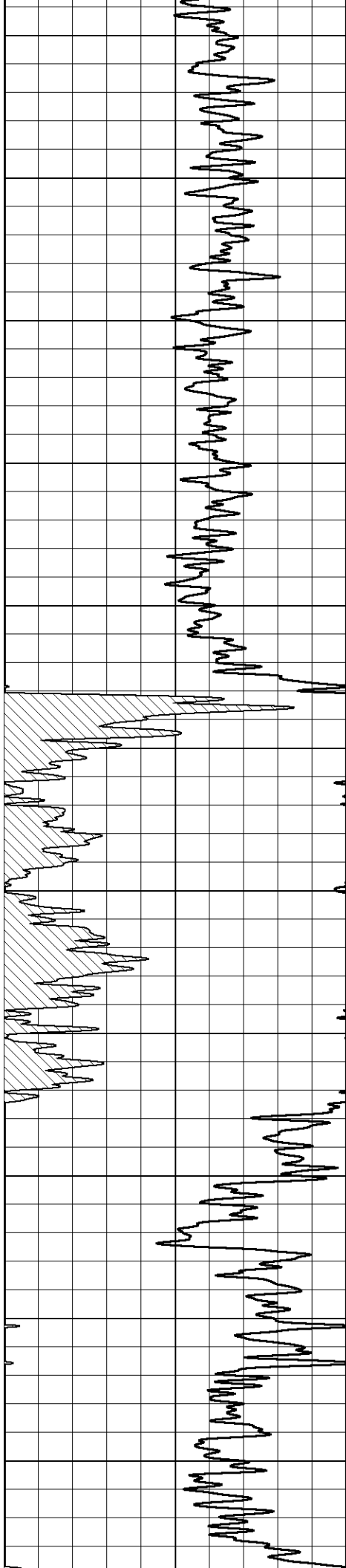


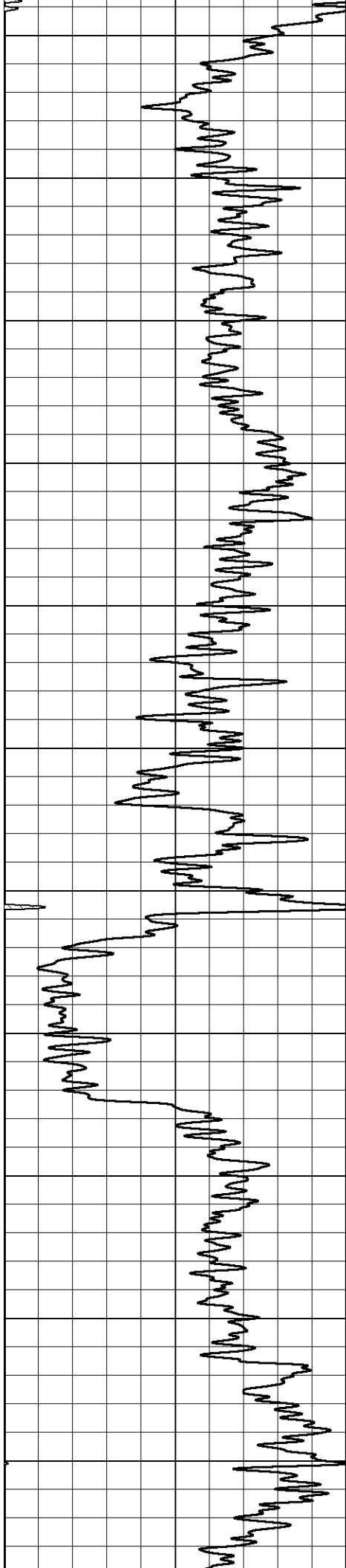
# MAIN PASS

Database File: brito\_egeland\_1\_14.db  
 Dataset Pathname: stack/pass3.1  
 Presentation Format: dil2in  
 Dataset Creation: Thu Feb 15 13:11:30 2018  
 Charted by: Depth in Feet scaled 1:600

0	GAMMA RAY (GAPI)	150	2000	CONDUCTIVITY (mmho/m)	0
			0	RLL3 (Ohm-m)	50
			0	DEEP RESISTIVITY (Ohm-m)	50
			50	RLL3 (Ohm-m)	500
				DEEP RESISTIVITY	
			50	(Ohm-m)	500







1100

1150

1200

1250

1300

1350

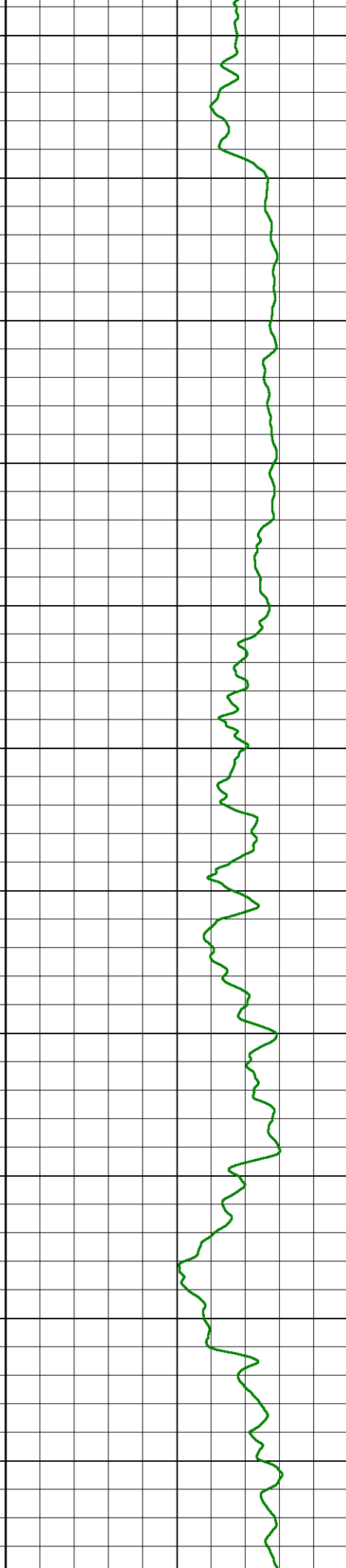
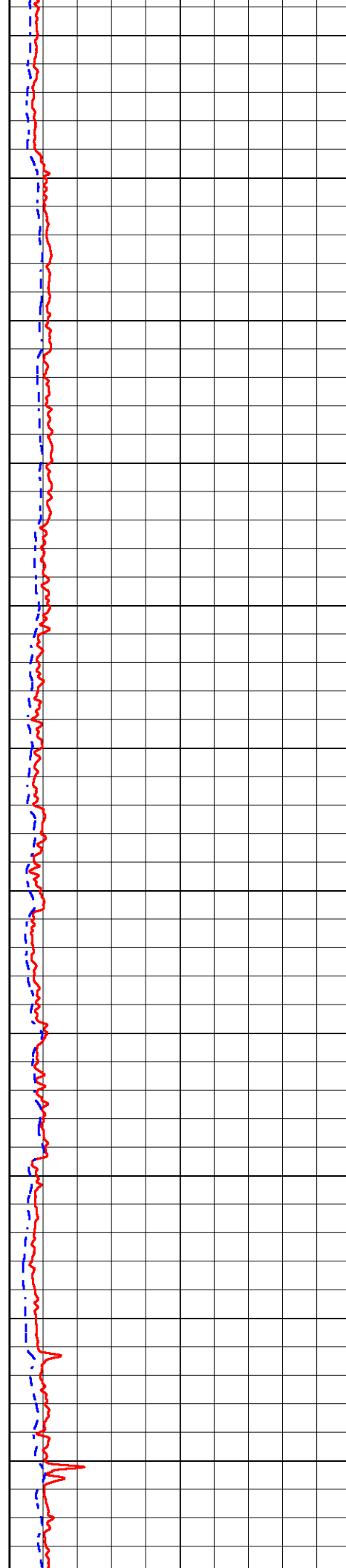
1400

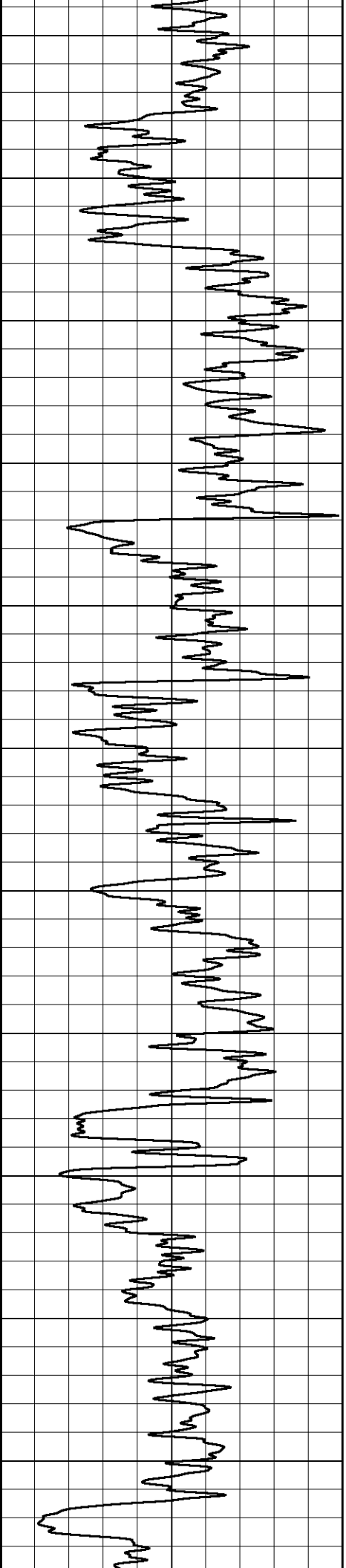
1450

1500

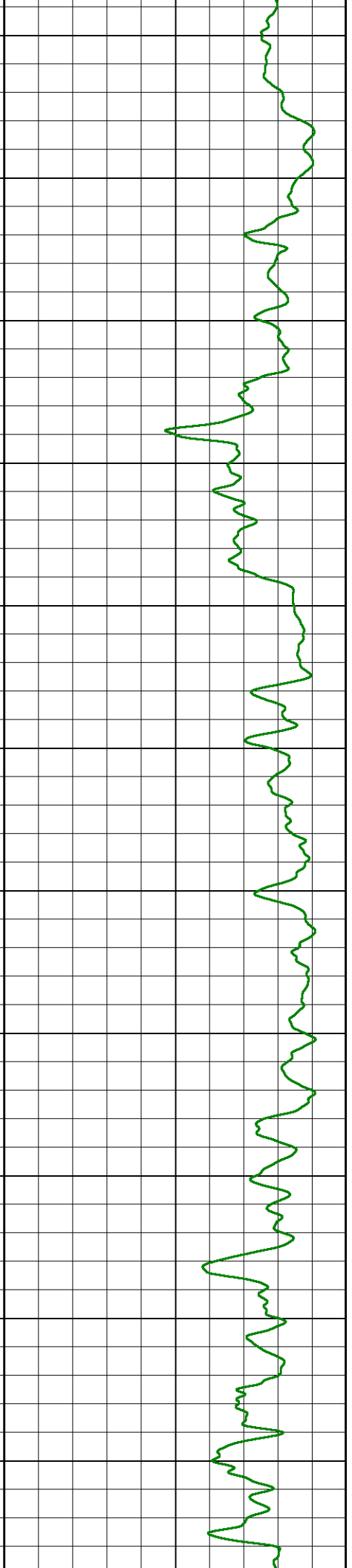
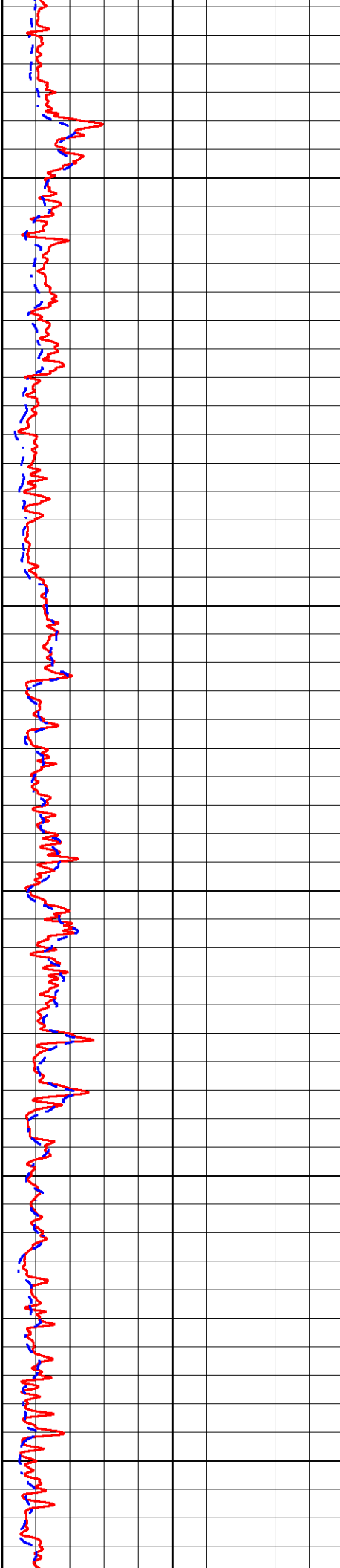
1550

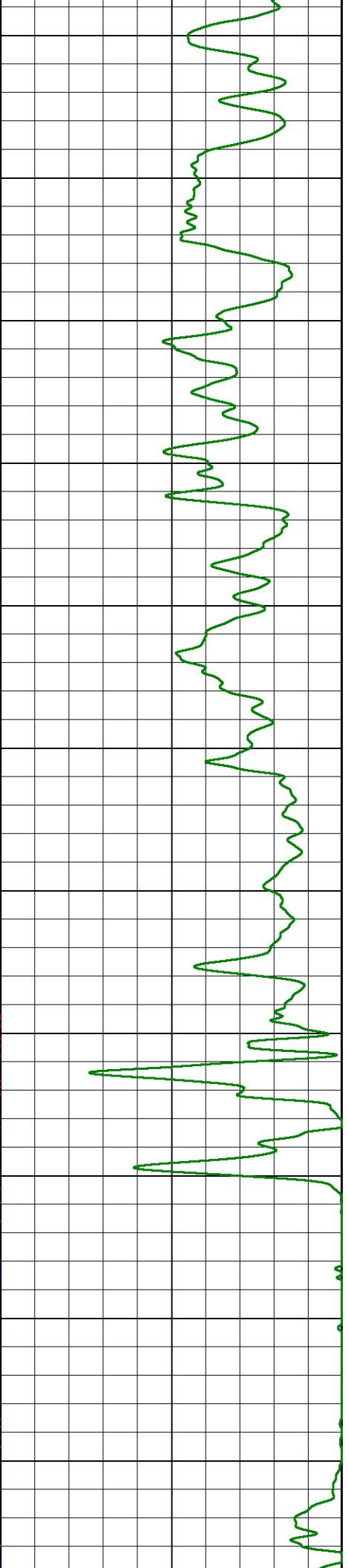
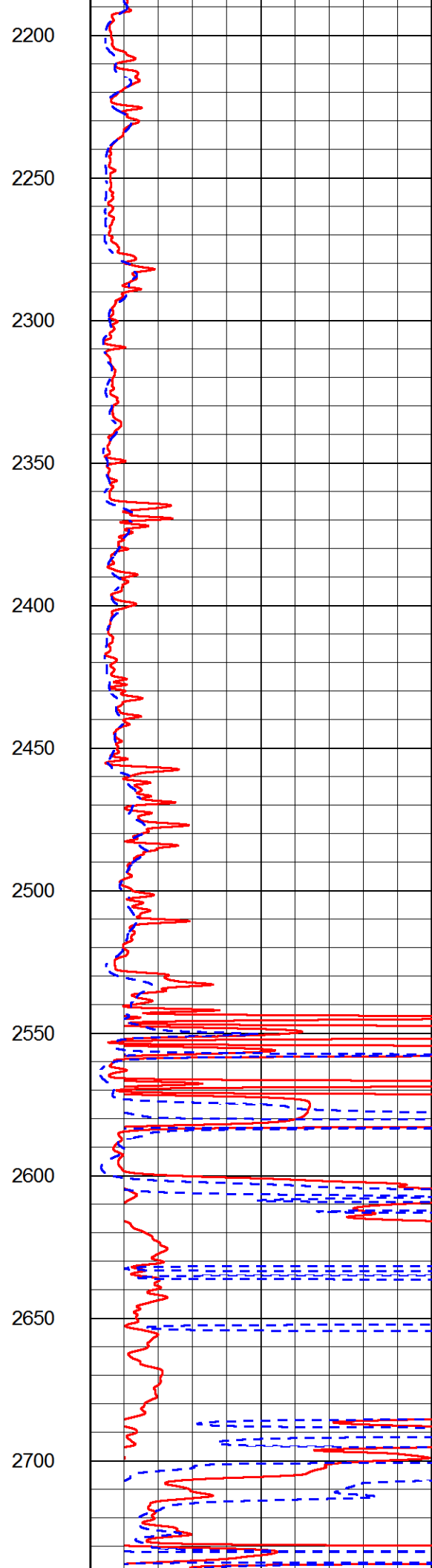
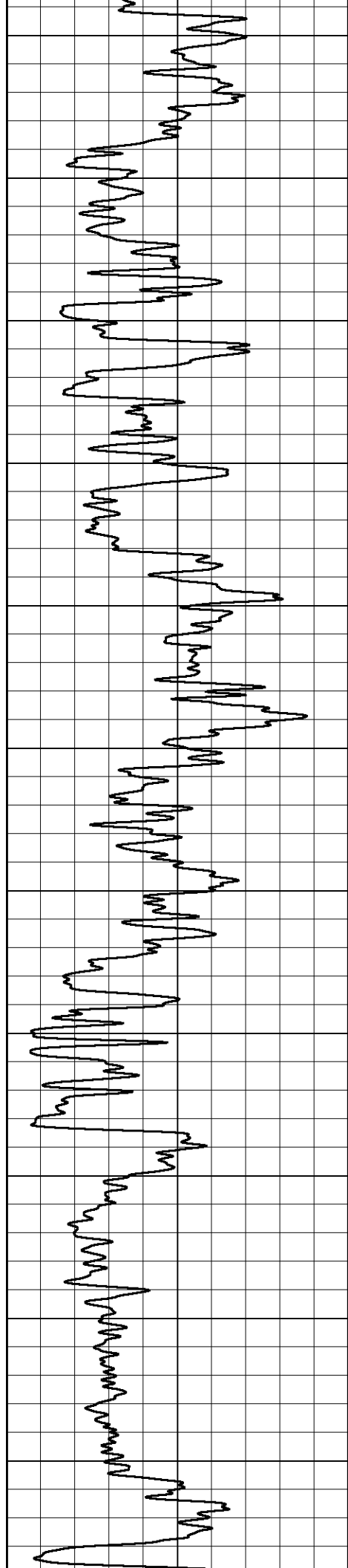
1600

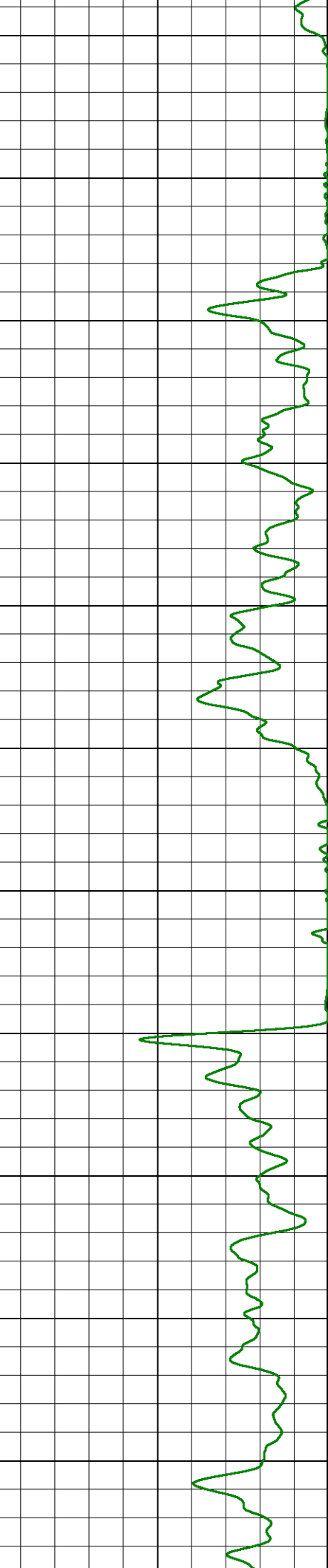
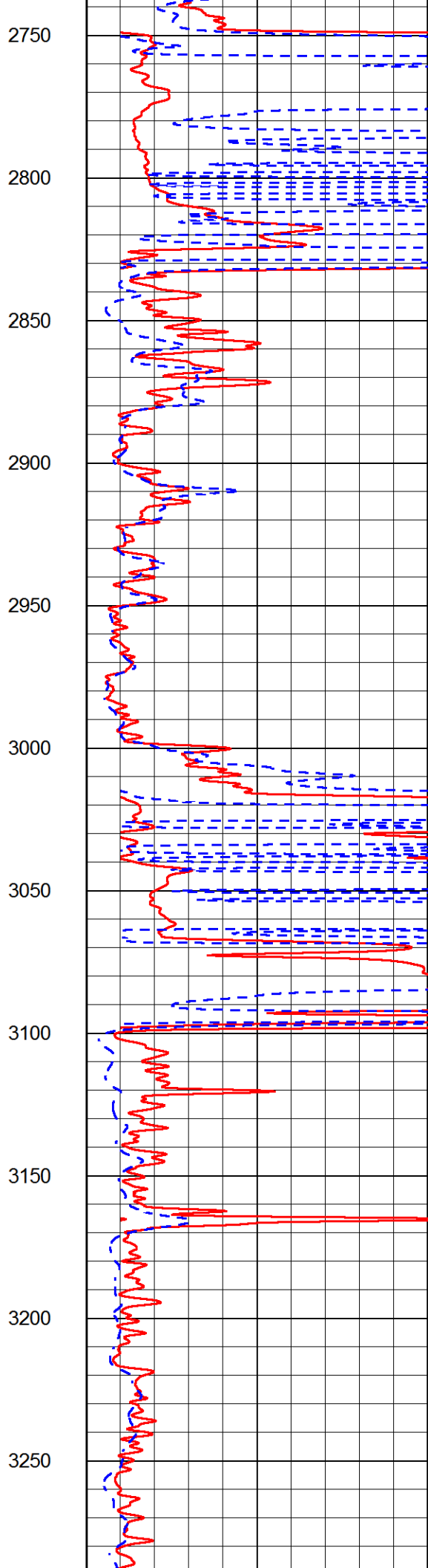
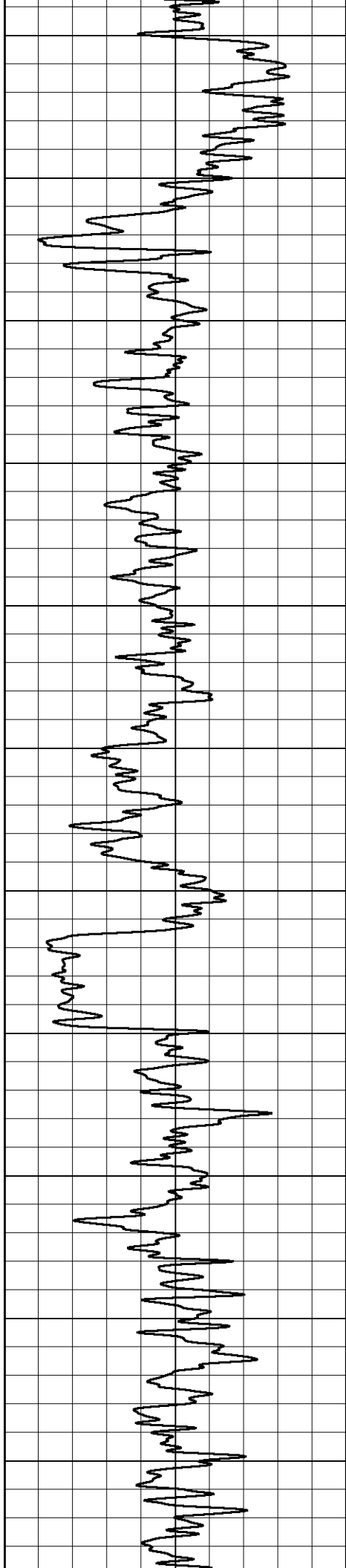


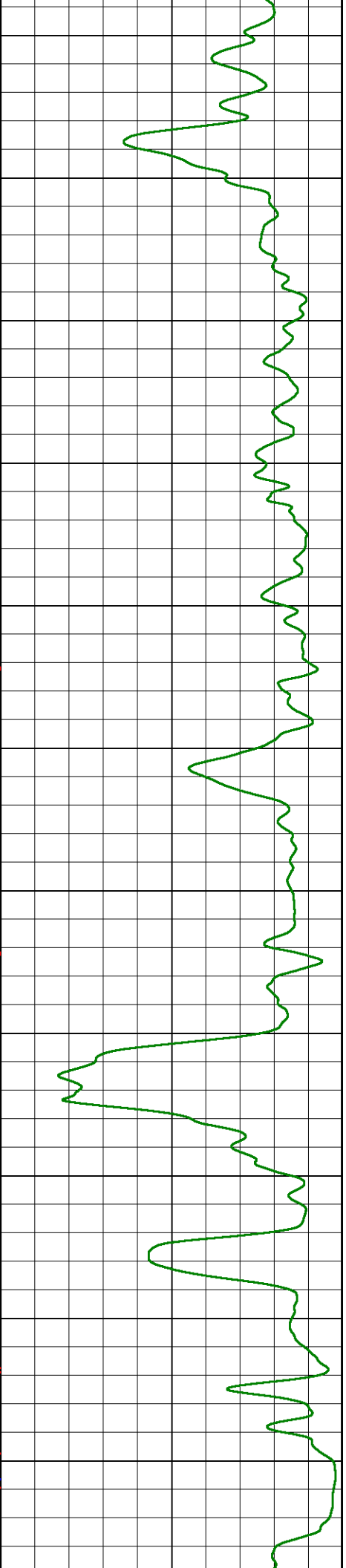
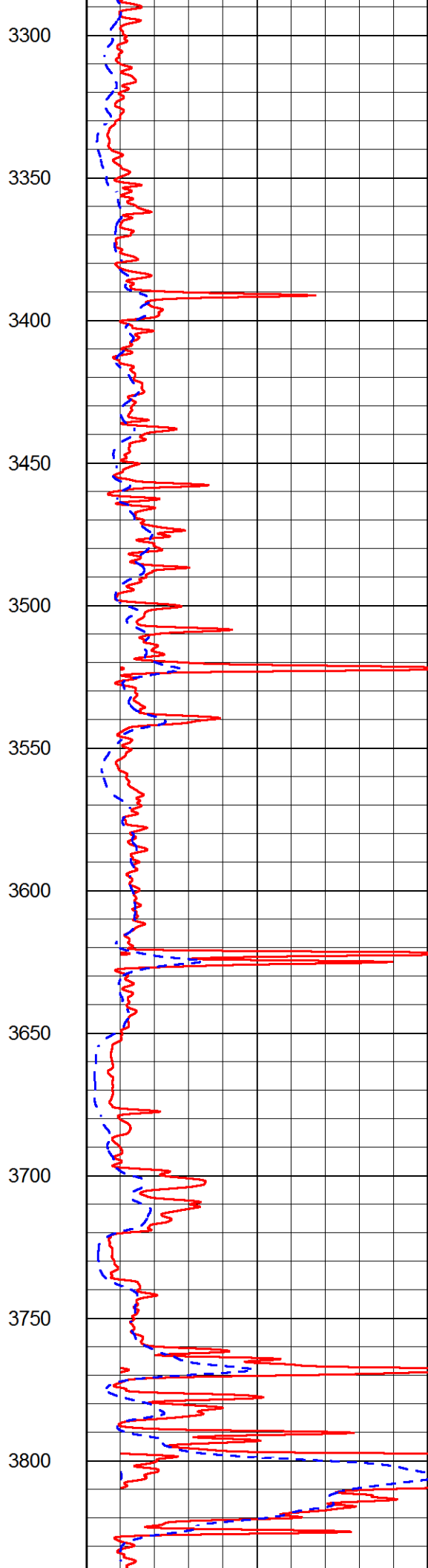
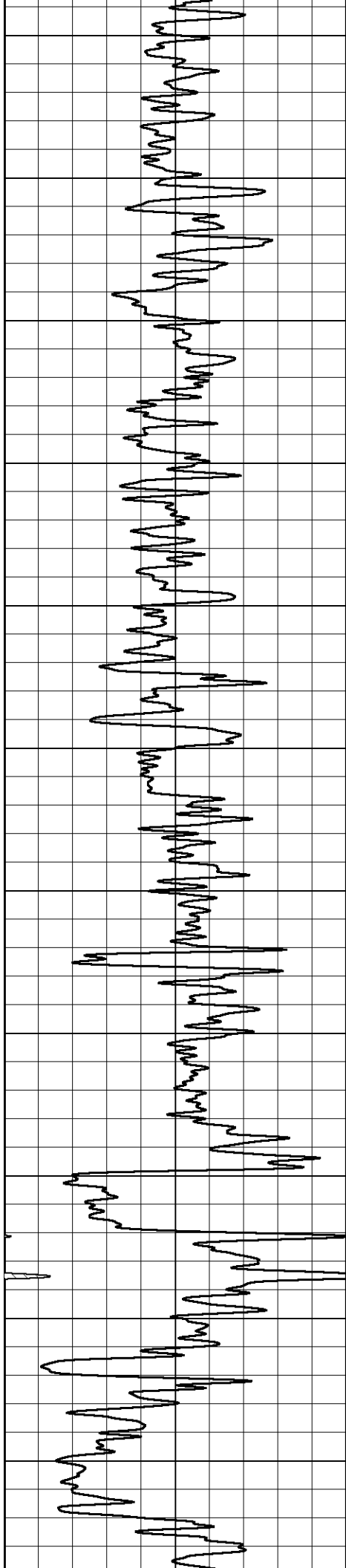


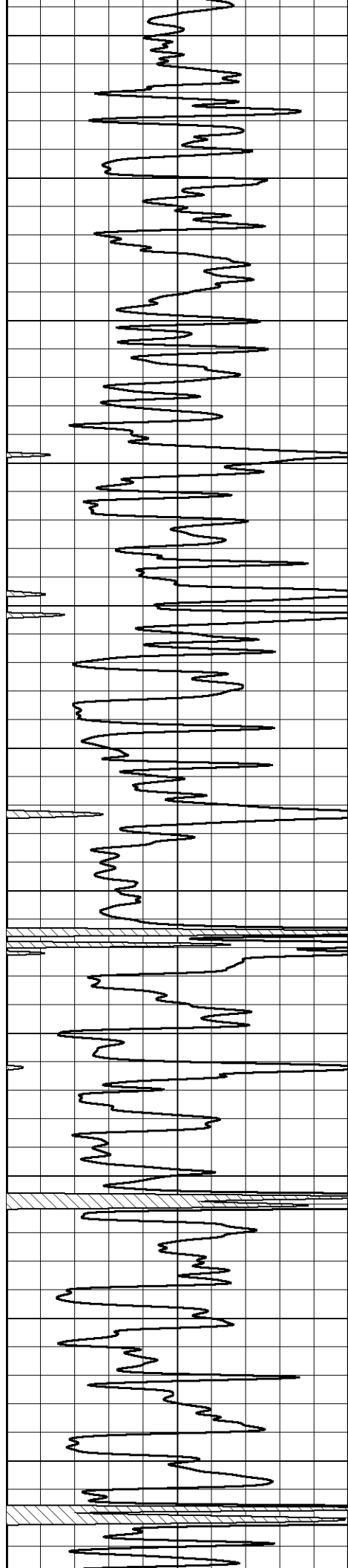
1650  
1700  
1750  
1800  
1850  
1900  
1950  
2000  
2050  
2100  
2150











3850

3900

3950

4000

4050

4100

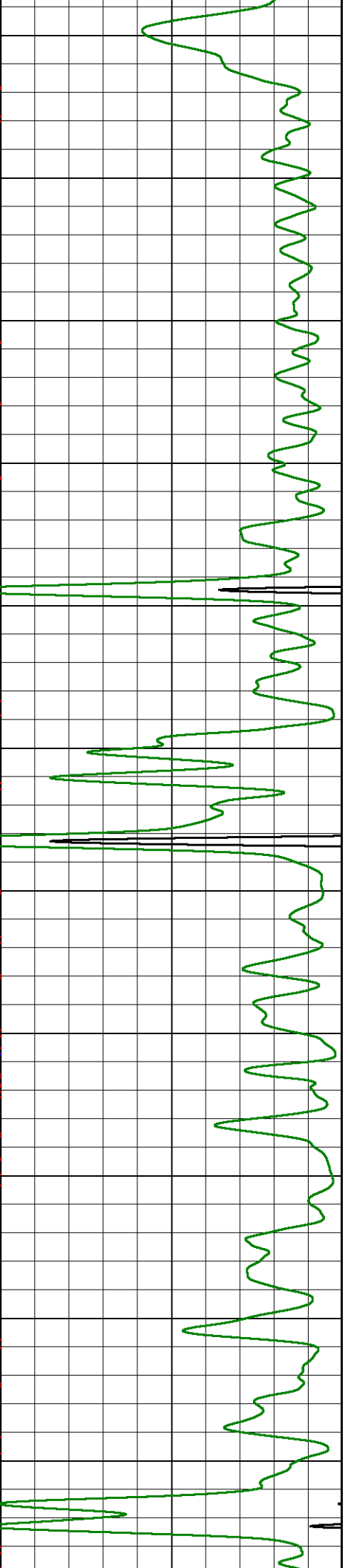
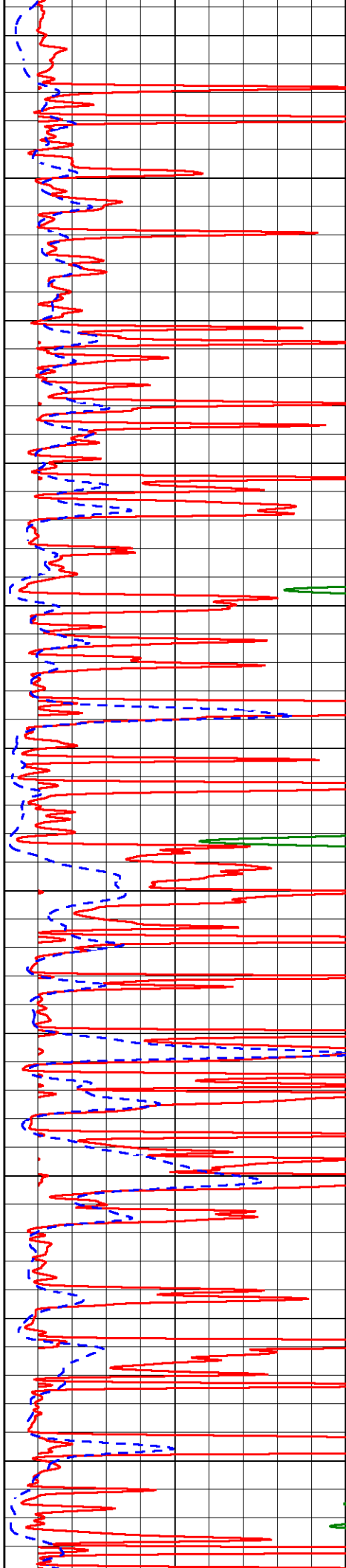
4150

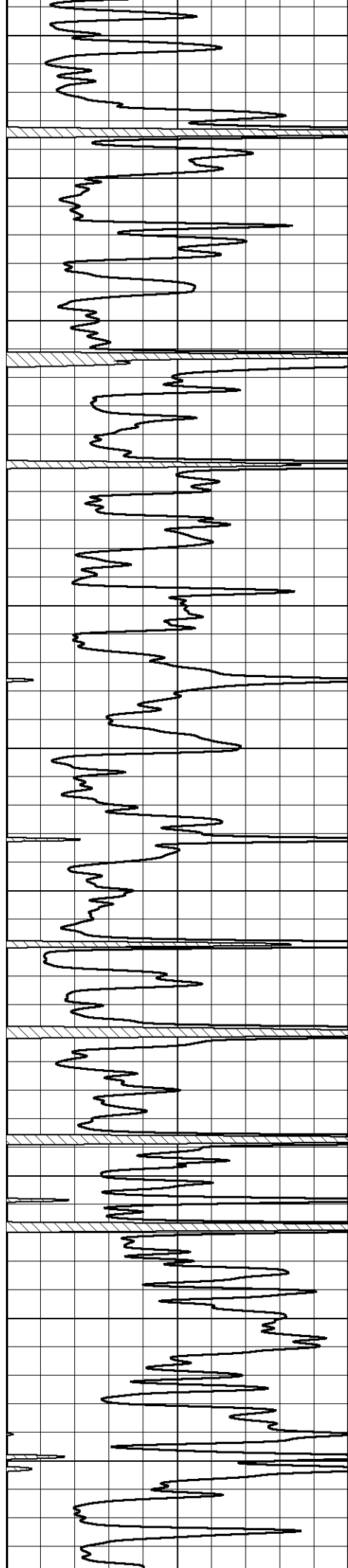
4200

4250

4300

4350





4400

4450

4500

4550

4600

4650

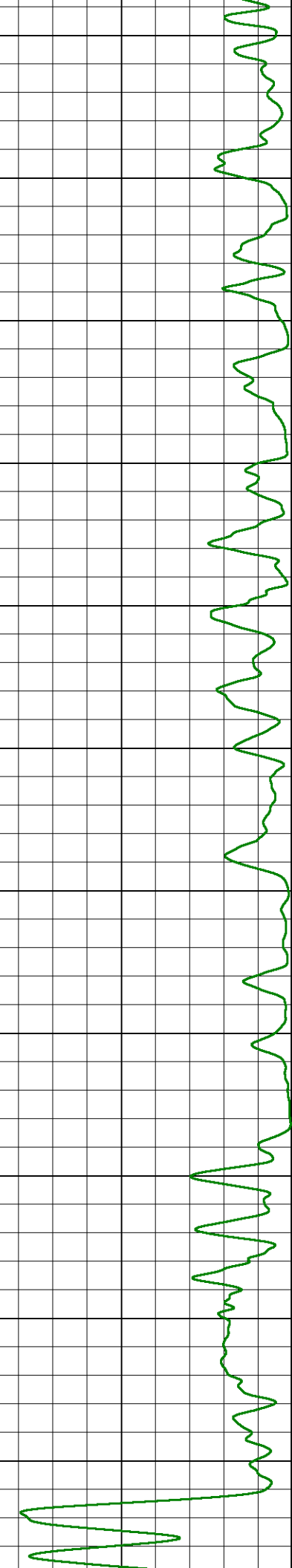
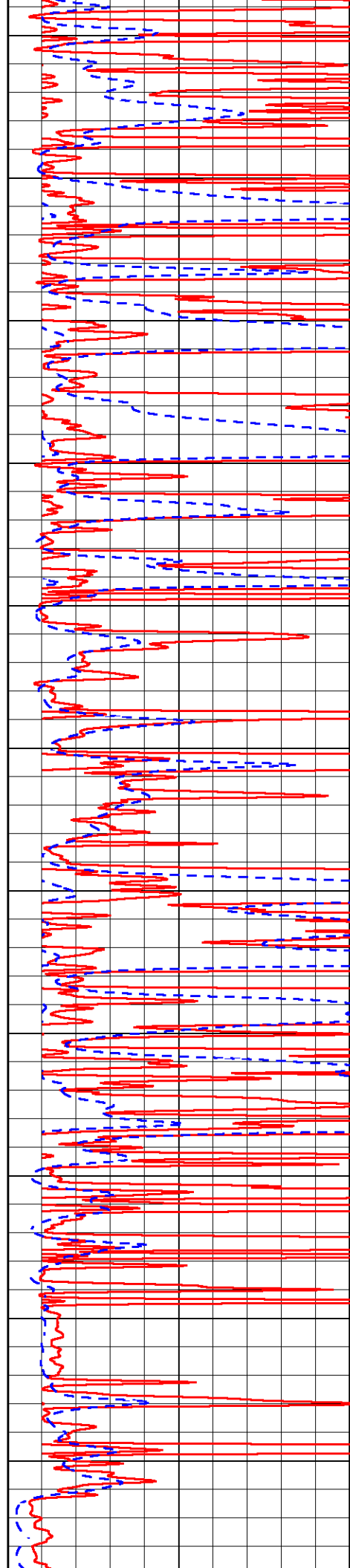
4700

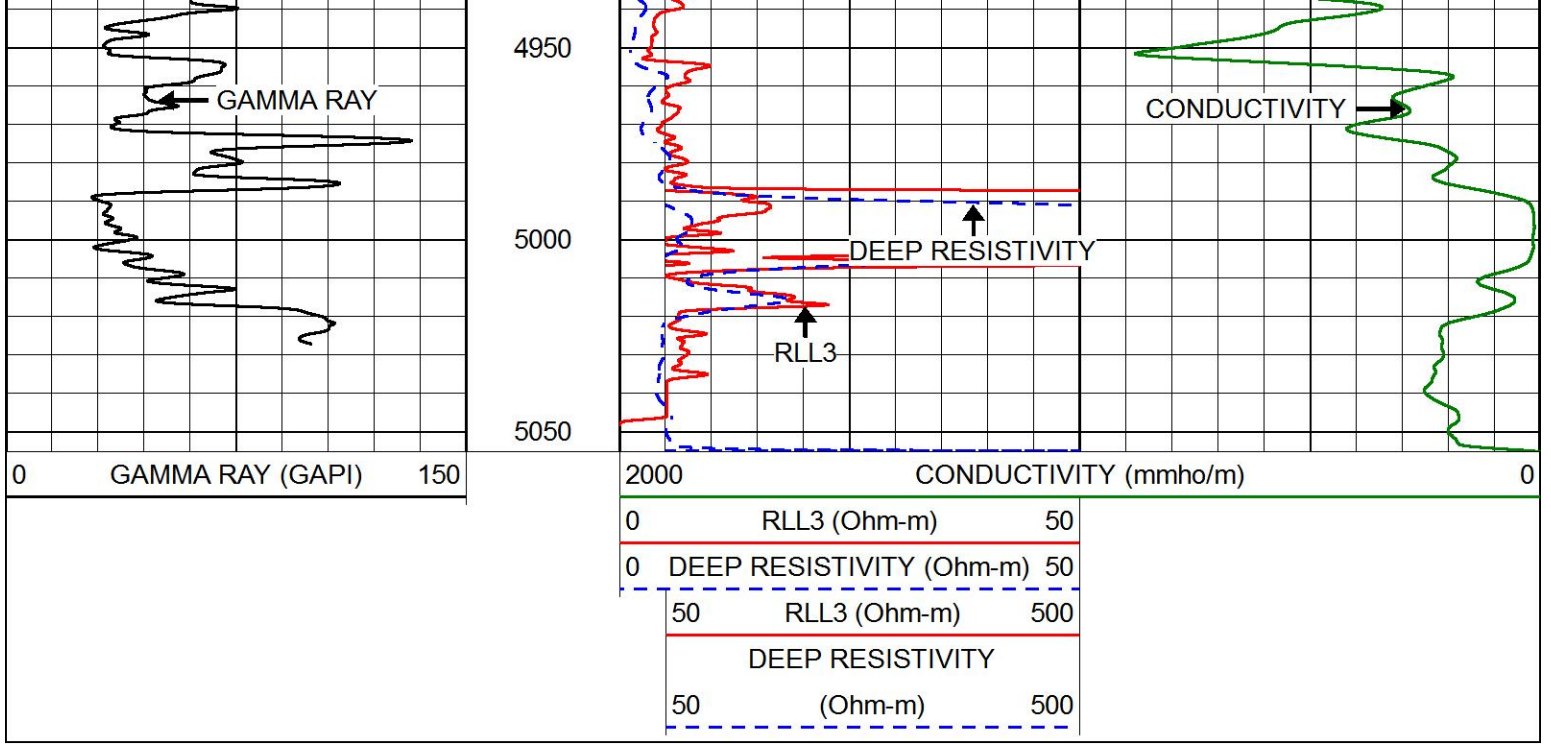
4750

4800

4850

4900

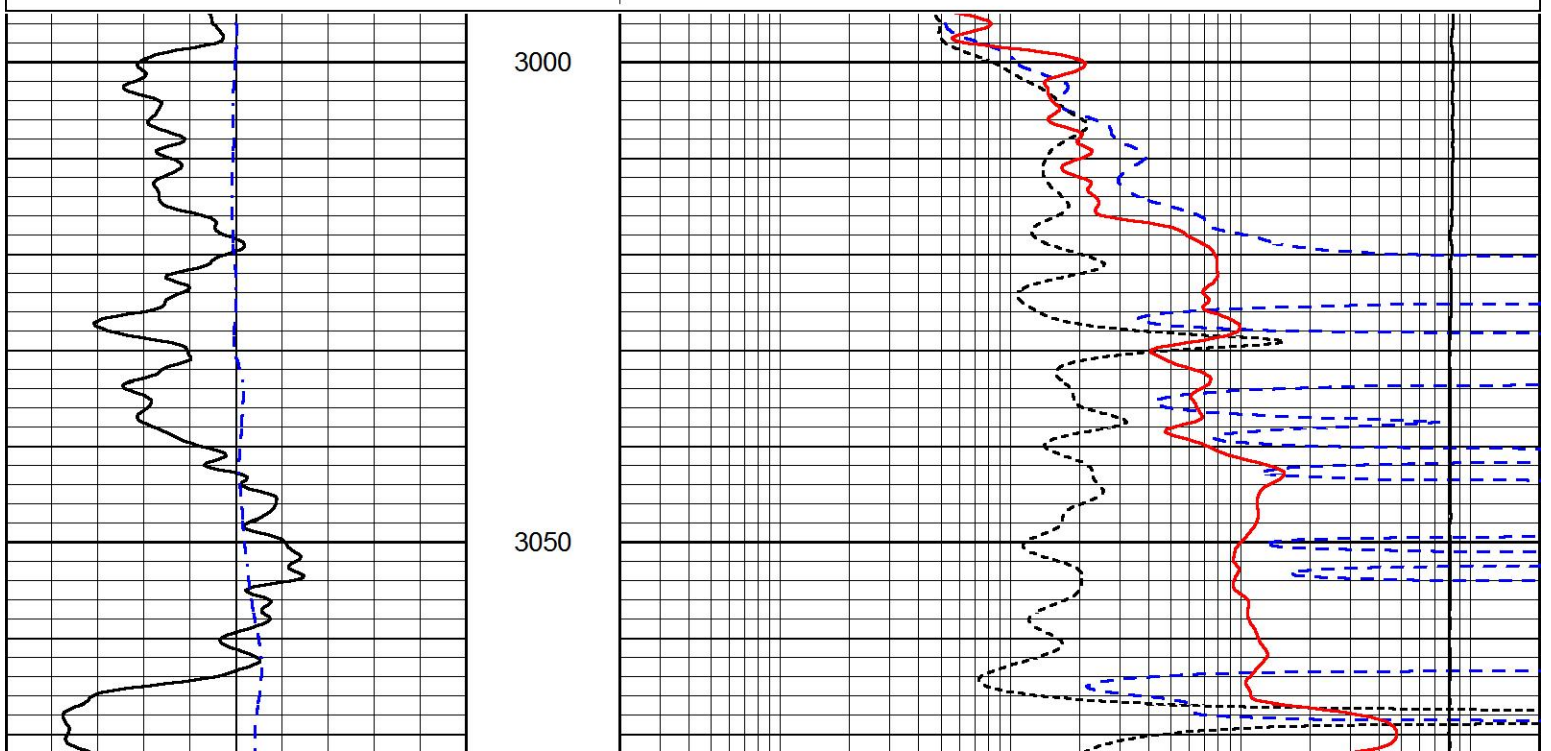


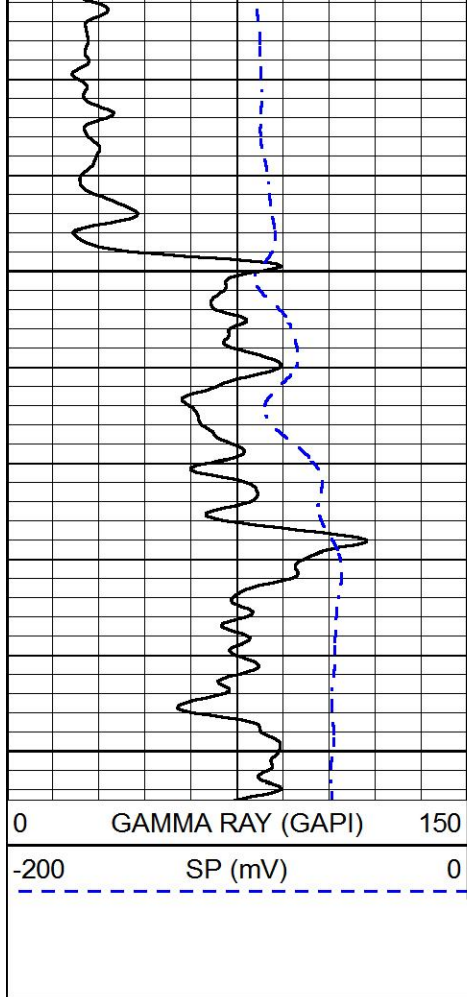



# MAIN PASS

Database File: brito\_egeland\_1\_14.db  
 Dataset Pathname: stack/pass3.1  
 Presentation Format: dil  
 Dataset Creation: Thu Feb 15 13:11:30 2018  
 Charted by: Depth in Feet scaled 1:240

0	GAMMA RAY (GAPI)	150	0.2	DEEP RESISTIVITY (Ohm-m)	2000
-200	SP (mV)	0	0.2	MEDIUM RESISTIVITY (Ohm-m)	2000
			0.2	RLL3 (Ohm-m)	2000
			15000	LINE TENSION (lb)	0

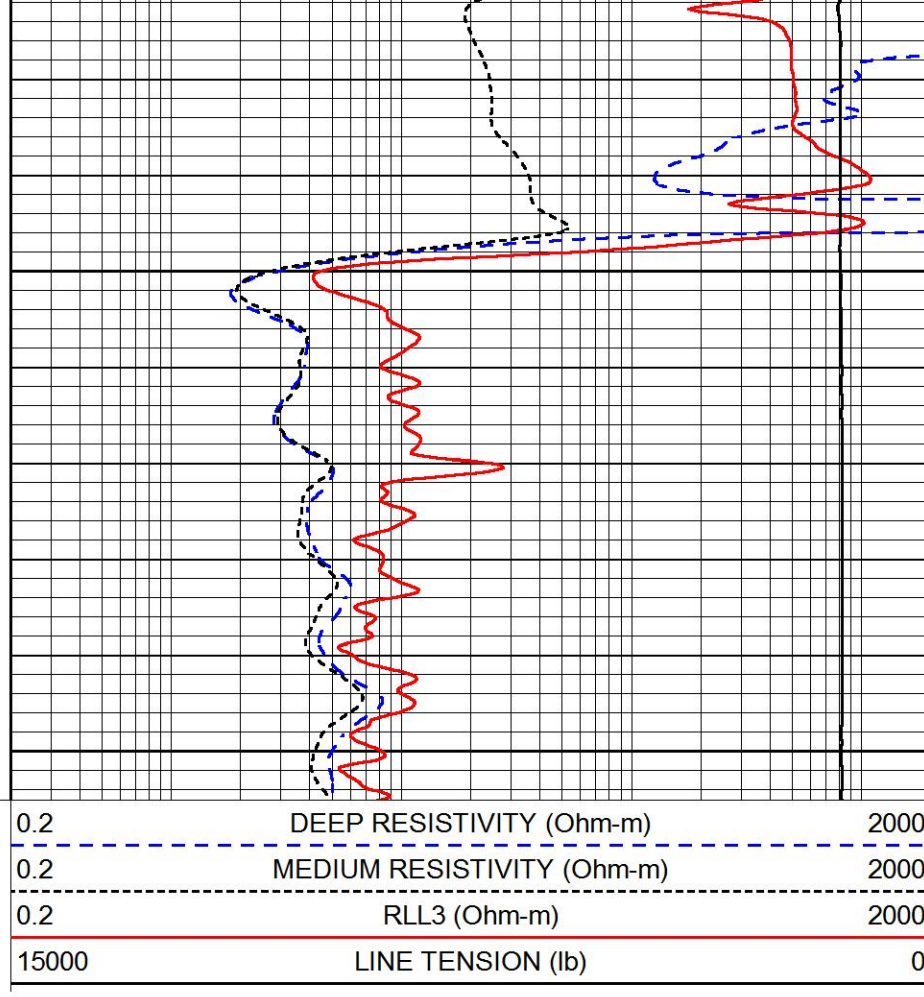




3100

3150

0 GAMMA RAY (GAPI) 150  
 -200 SP (mV) 0



0.2 DEEP RESISTIVITY (Ohm-m) 2000  
 0.2 MEDIUM RESISTIVITY (Ohm-m) 2000  
 0.2 RLL3 (Ohm-m) 2000  
 15000 LINE TENSION (lb) 0

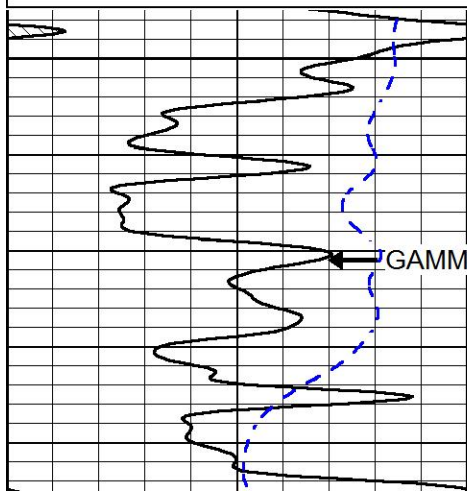


# MAIN PASS

Database File brito\_egeland\_1\_14.db  
 Dataset Pathname stack/pass3.1  
 Presentation Format dil  
 Dataset Creation Thu Feb 15 13:11:30 2018  
 Charted by Depth in Feet scaled 1:240

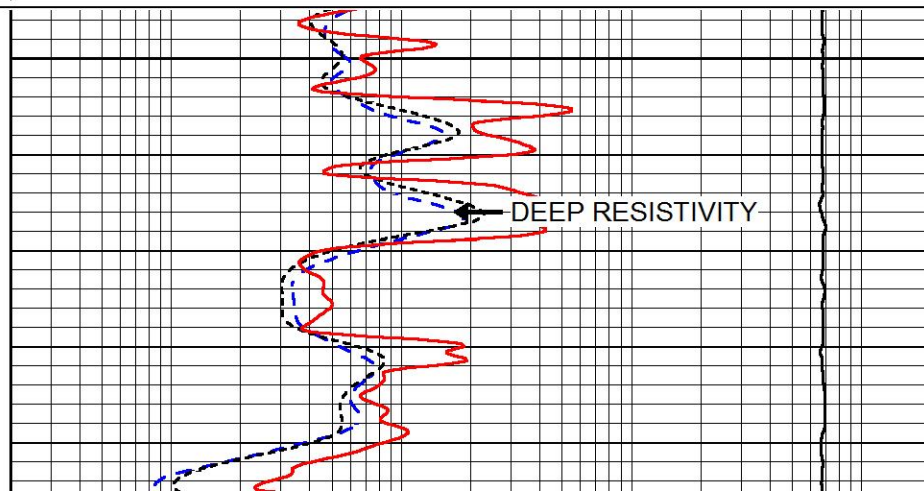
0 GAMMA RAY (GAPI) 150  
 -200 SP (mV) 0

0.2 DEEP RESISTIVITY (Ohm-m) 2000  
 0.2 MEDIUM RESISTIVITY (Ohm-m) 2000  
 0.2 RLL3 (Ohm-m) 2000  
 15000 LINE TENSION (lb) 0

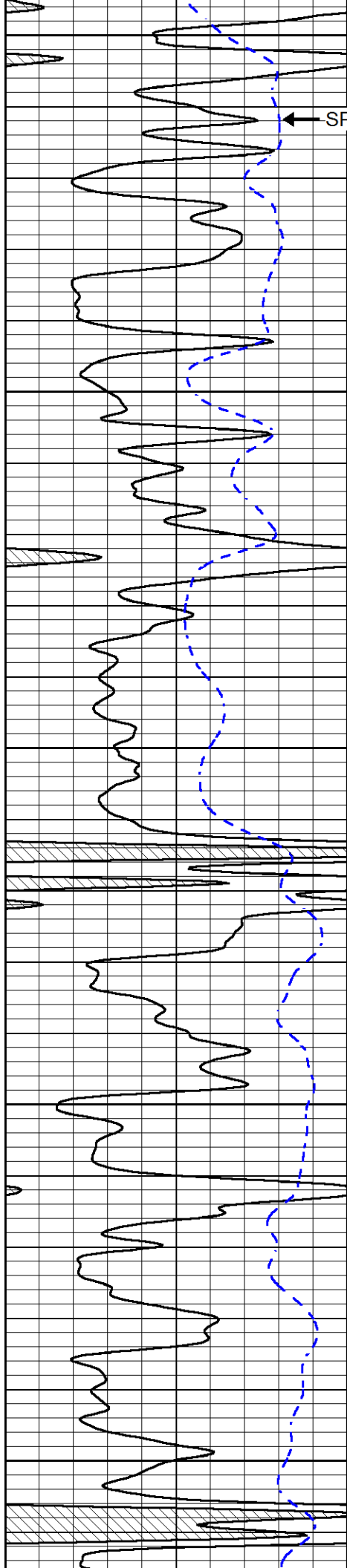


4000

GAMMA RAY



DEEP RESISTIVITY



4050

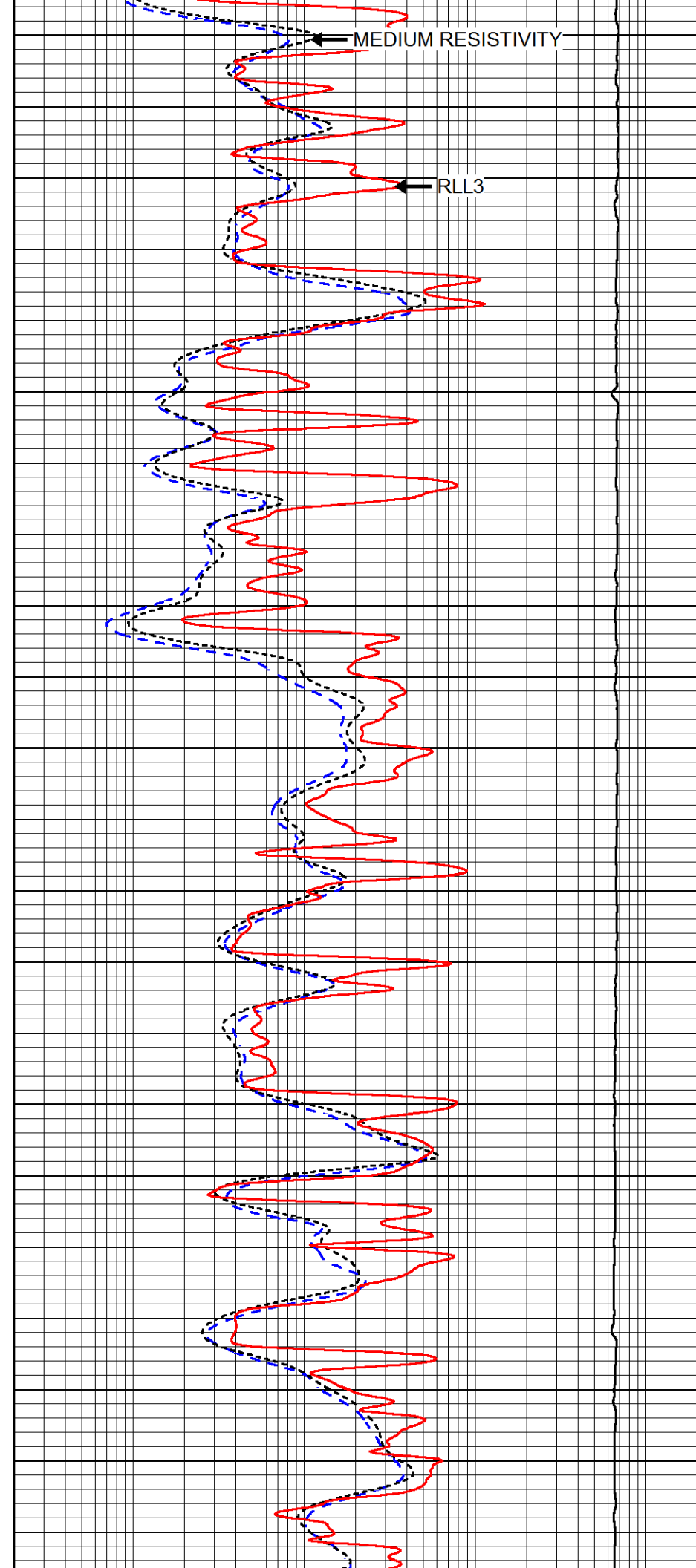
SP

4100

4150

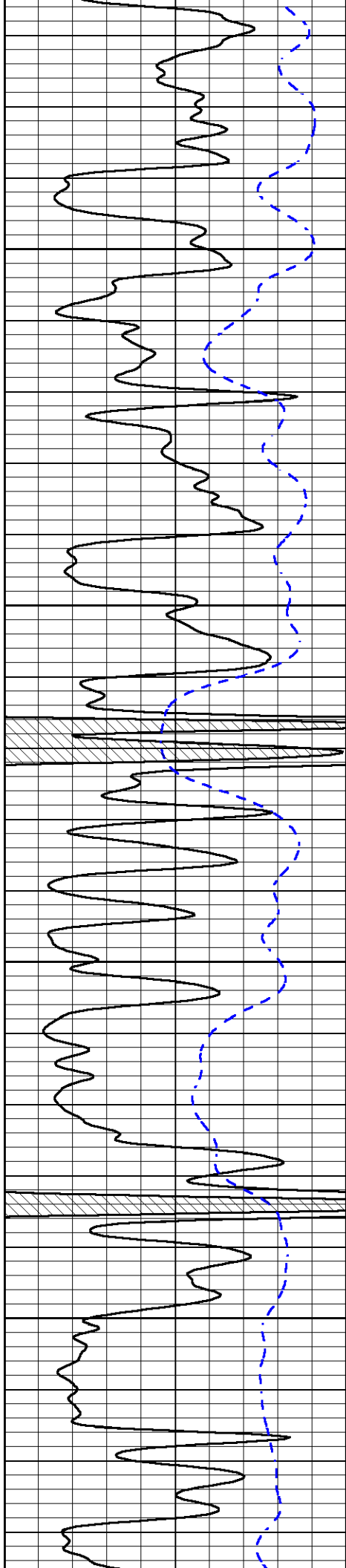
4200

4250



MEDIUM RESISTIVITY

RLL3

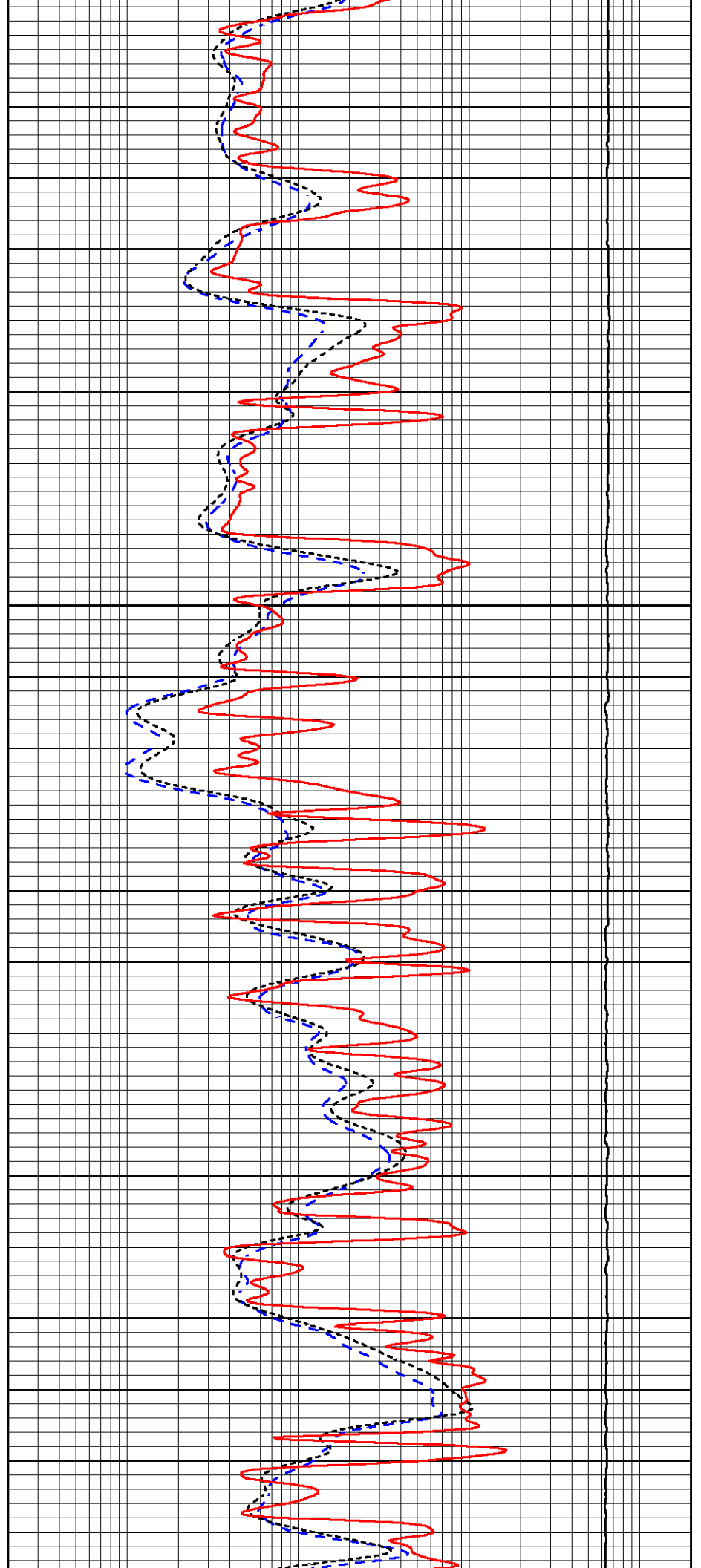


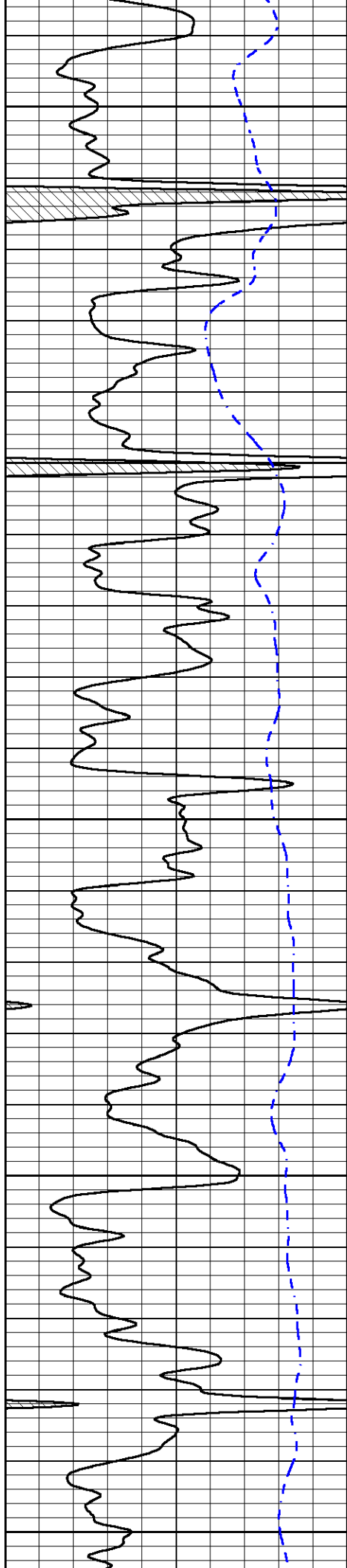
4300

4350

4400

4450





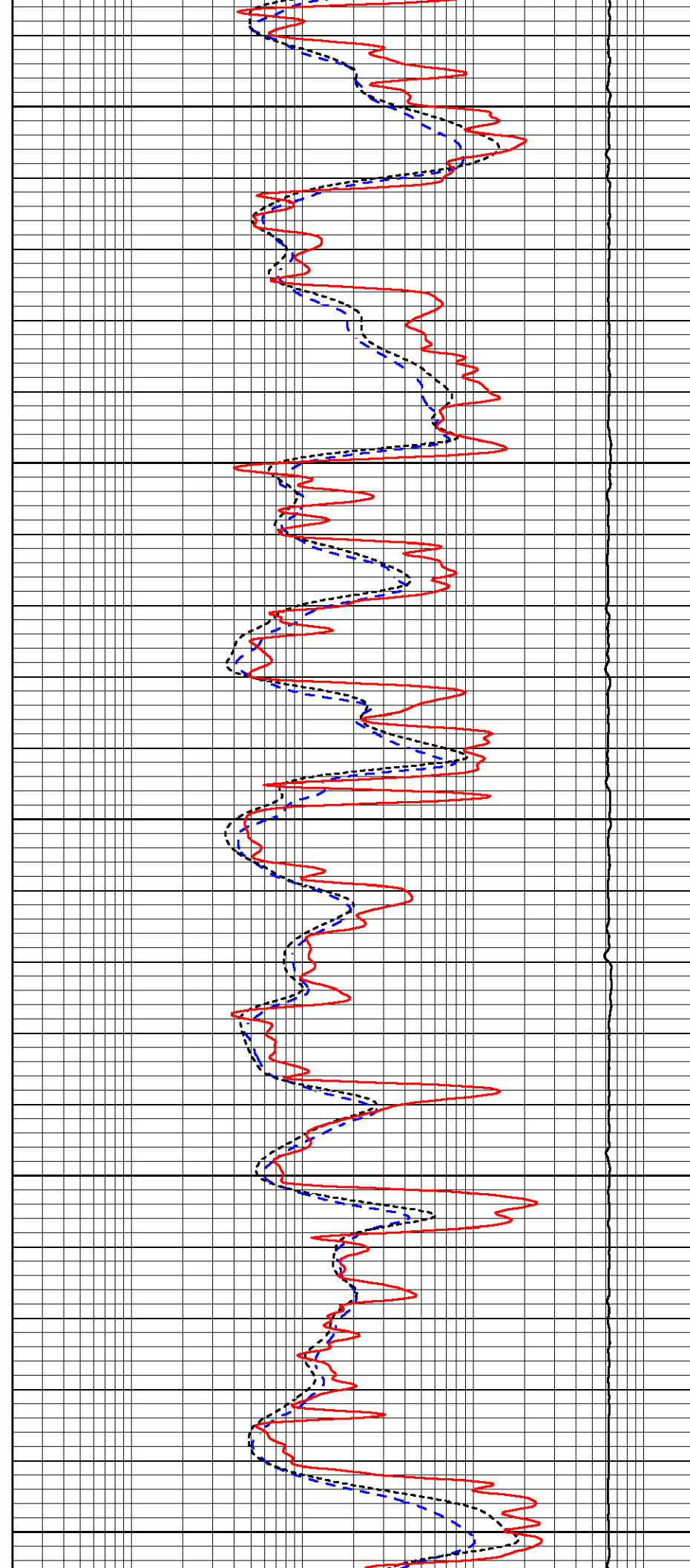
4500

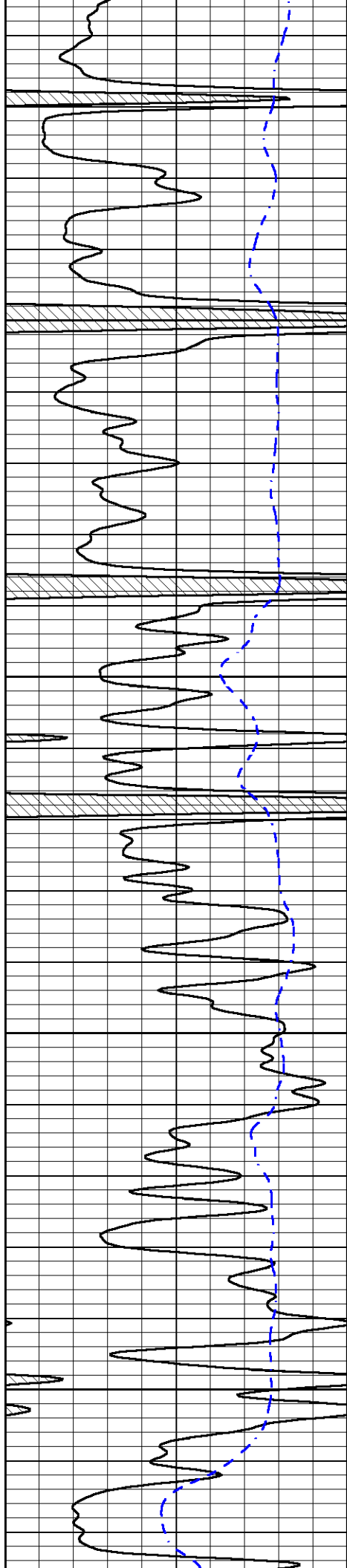
4550

4600

4650

4700



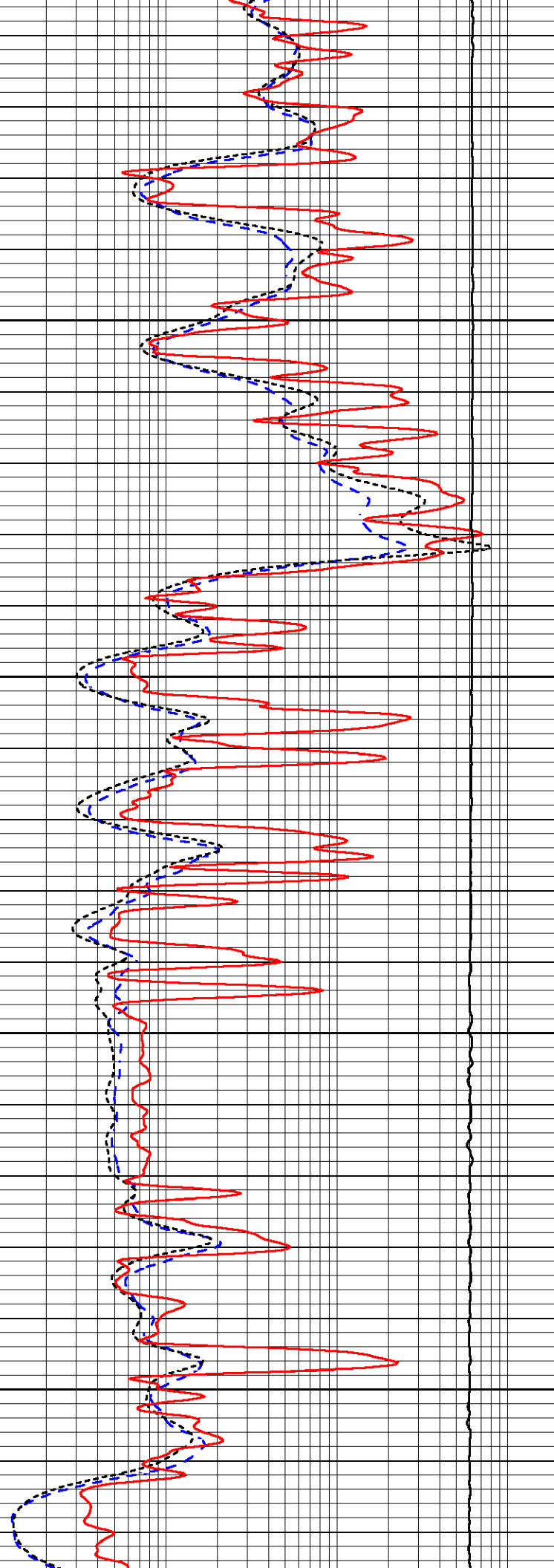


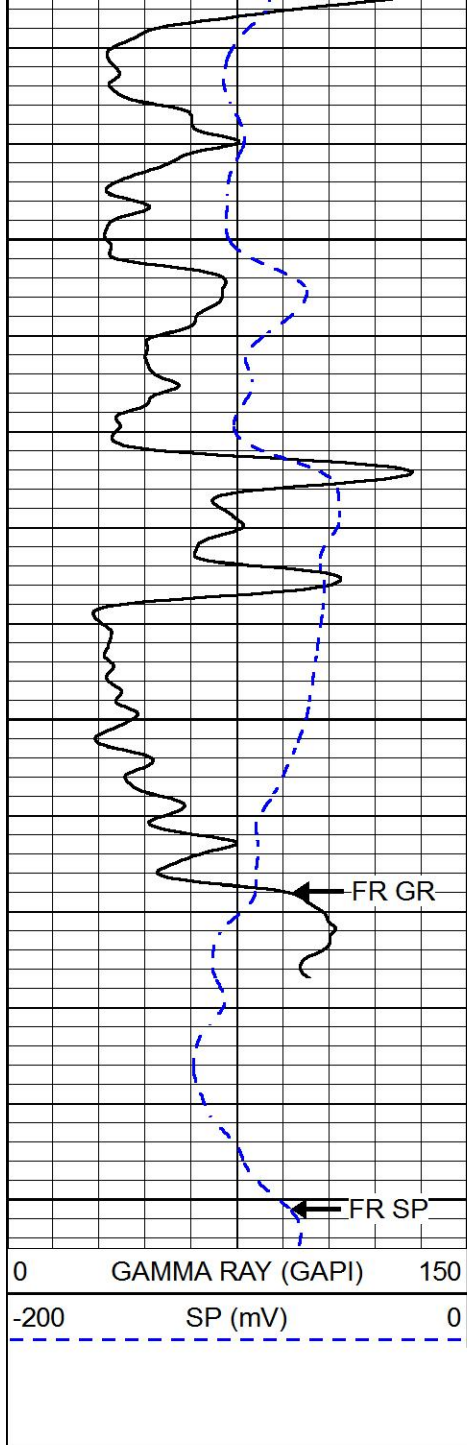
4750

4800

4850

4900

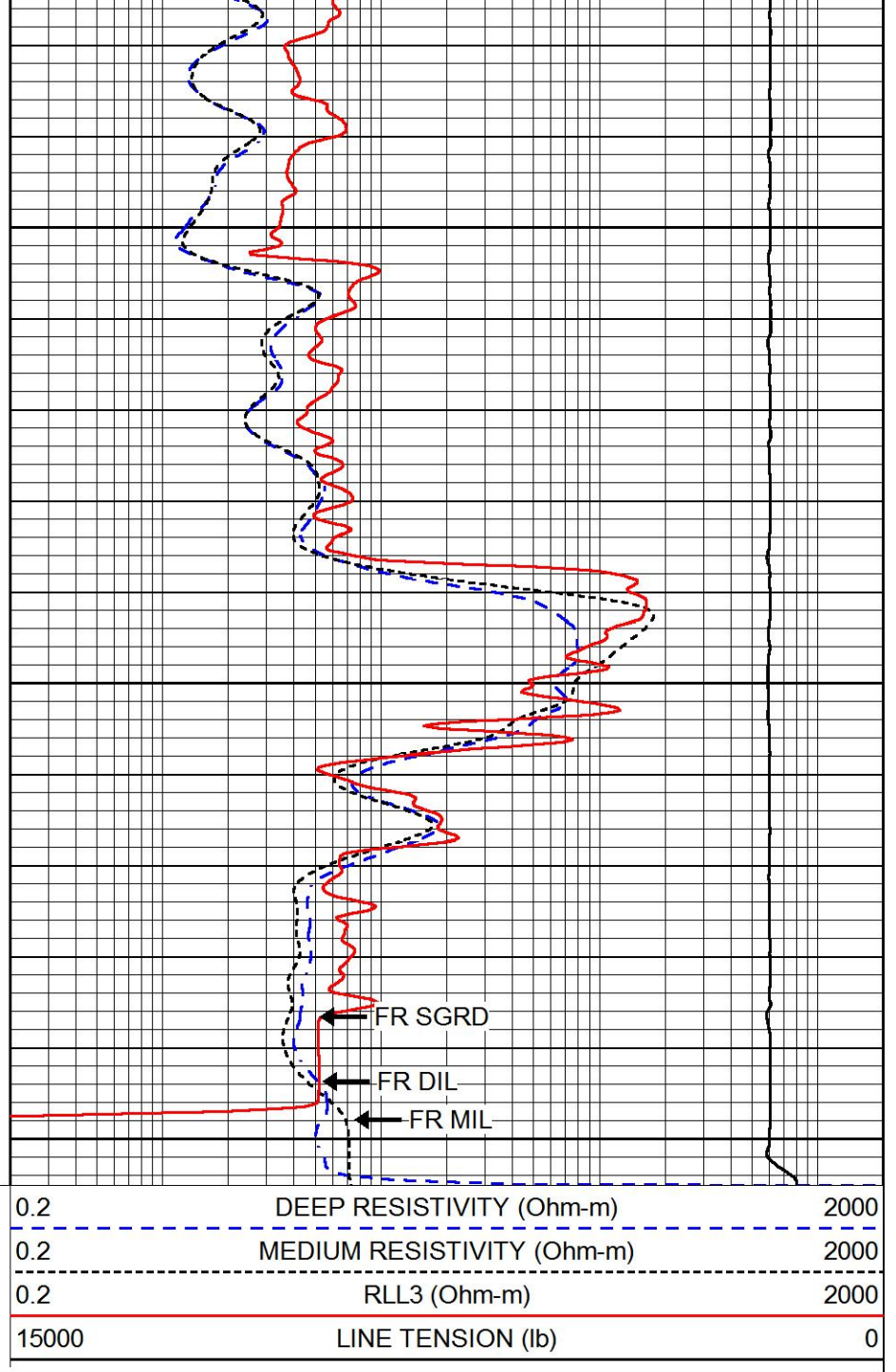




4950

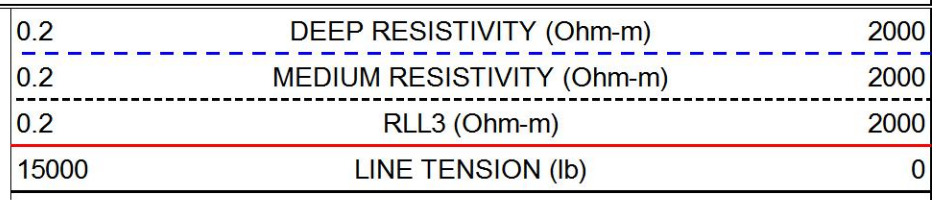
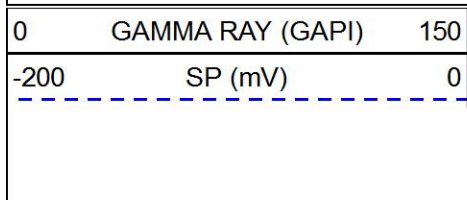
5000

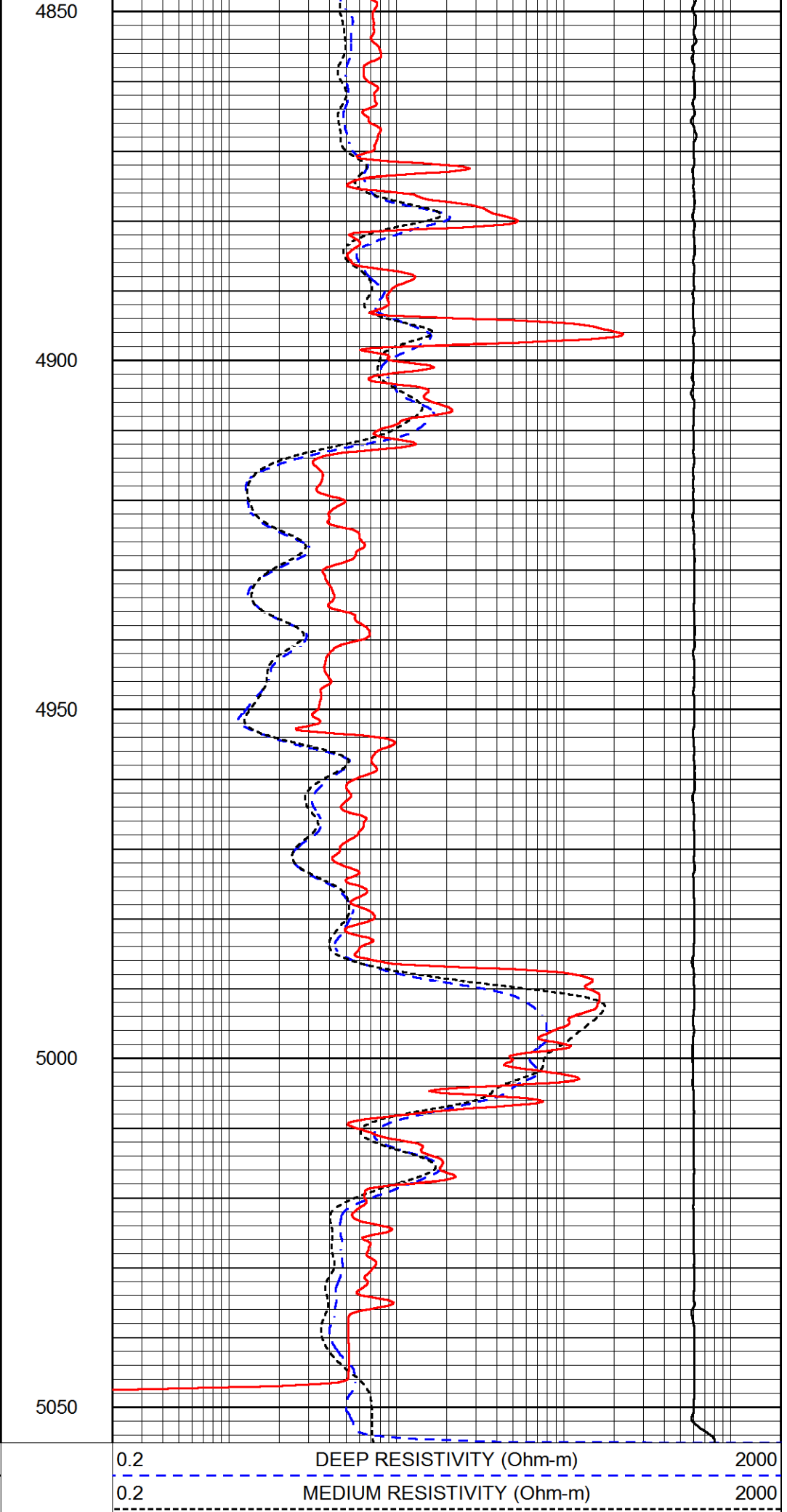
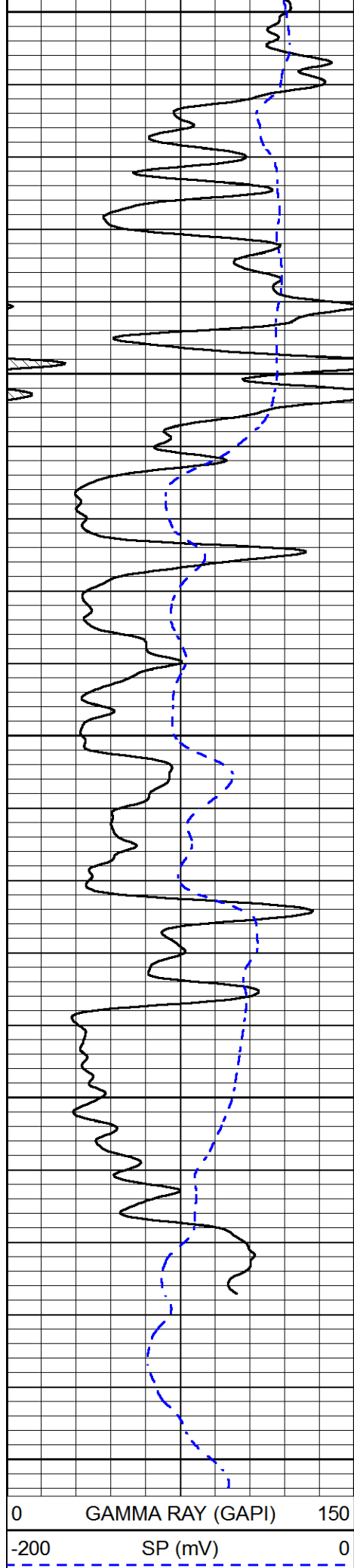
5050



# REPEAT SECTION

Database File      brito\_egeland\_1\_14.db  
 Dataset Pathname      stack/pass2.1  
 Presentation Format      dil  
 Dataset Creation      Thu Feb 15 13:11:53 2018  
 Charted by      Depth in Feet scaled 1:240







Sensitivity:

0.5200

GAPI/cps



**PIONEER**

Pioneer Energy Services

Company	BRITO OIL COMPANY, INC.
Well	EGELAND 1-14
Field	SRAMEK
County	SHERMAN
State	KANSAS