



# DUAL COMP POROSITY LOG

Pioneer Energy Services

Company BRITO OIL COMPANY, INC.  
 Well EGELAND 1-14  
 Field SRAMEK  
 County SHERMAN State KANSAS

Company BRITO OIL COMPANY, INC.  
 Well EGELAND 1-14  
 Field SRAMEK  
 County SHERMAN  
 State KANSAS

Location: API #: 15-181-20610-00-00  
 720' FNL & 330' FEL  
 SEC 14 TWP 7S RGE 37W  
 Permanent Datum GROUND LEVEL Elevation 3427'  
 Log Measured From KELLY BUSHING  
 Drilling Measured From KELLY BUSHING  
 Other Services DIL/MEL  
 Elevation K.B. 3432'  
 D.F. N/A  
 G.L. 3427'

Date	21/5/2018
Run Number	ONE
Type Log	CNL/CDL
Depth Driller	5050'
Depth Logger	5052'
Bottom Logged Interval	5031'
Top Logged Interval	4000'
Type Fluid In Hole	CHEMICAL
Salinity, PPM CL	4000
Density	9.1
Level	FULL
Max. Rec. Temp. F	127 DEG/F
Operating Rig Time	3 HOURS
Equipment -- Location	108 HAYS
Recorded By	IAN MABB
Witnessed By	ROBERT HENDRIX

Run No.	Bit	Borehole Record			Casing Record		
		From	To	Size	Wgt. 23#	From	To
ONE	12.25"	0	345'	8.625"		0	345'
TWO	7.875"	345'		TD			

<<< Fold Here >>>

All interpretations are opinions based on inferences from electrical or other measurements and Pioneer Wireline Services, LLC cannot and does not guarantee the accuracy or correctness of any interpretation, and Pioneer Wireline Services, LLC will not be liable or responsible for any loss, costs, damages, or expenses incurred or sustained by anyone resulting from any interpretation made by any of our officers, agents or employees.

Comments

N/A DENOTES NOT AVAILABLE OR NON-APPLICABLE.

BREWSTER, KS.  
 NORTH TO RD. X , WEST TO 35  
 SOUTH 1 MILE , EAST INTO

Log Measured From: KELLY BUSHING 5 Ft. Above Permanent Datum

THANK YOU FOR USING PIONEER ENERGY SERVICES  
[www.pioneerenergy.com](http://www.pioneerenergy.com) 785-625-3858

Your Pioneer Energy Services Crew

Engineer: IAN MABB  
 Operator:  
 Operator:  
 Operator:

This Log Record Was Witnessed By


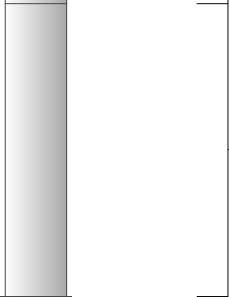
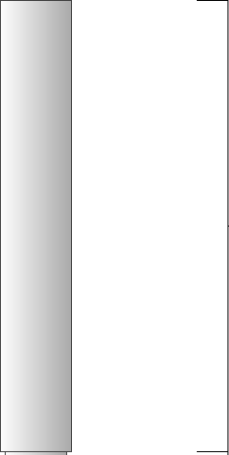

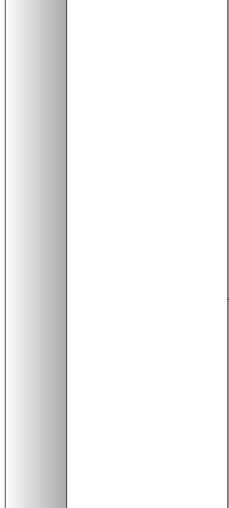
Primary Witness: ROBERT HENDRIX  
 Secondary Witness:  
 Secondary Witness:  
 Secondary Witness:

# Log Variables

DatabaseC:\ProgramData\Warrior\Data\brito\_egeland\_1\_14.db  
Dataset field/well/stack/pass3.1/\_vars\_

## Top - Bottom

A	BOREID in	BOTTEMP degF	CASEOD in	CASETHCK in	FLUIDDEN g/cc	M	MATRXDEN g/cc
1	7.875	127	5.5	0	1	2	2.71
NPORSEL	PERFS	SNDERR mmho/m	SNDERRM mmho/m	SPSHIFT mV	SRFTEMP degF	SZCOR	TDEPTH ft
Limestone	0	0	0	-255	40	Off	5052

Sensor	Offset (ft)	Schematic	Description	Length (ft)	O.D. (in)	Weight (lb)
GR	33.00		GR-M&W (89-M&W)	3.00	3.50	50.00
CNLSC CNSSC	29.90 29.15		CNT-M&W (tk10-MW)	5.50	3.50	100.00
LSD DCAL SSD	20.85 20.83 20.35		CDL-M&W (168-986)	8.50	4.00	250.00
RLL3 RLL3F	15.80 15.79					
CILD	8.00		DIL-M&W (PSI 978)	18.50	3.50	220.00

CILM 4.70

SP 0.20

Dataset: brito\_egeland\_1\_14.db: field/well/stack/pass3.1  
 Total length: 35.50 ft  
 Total weight: 620.00 lb  
 O.D.: 4.00 in

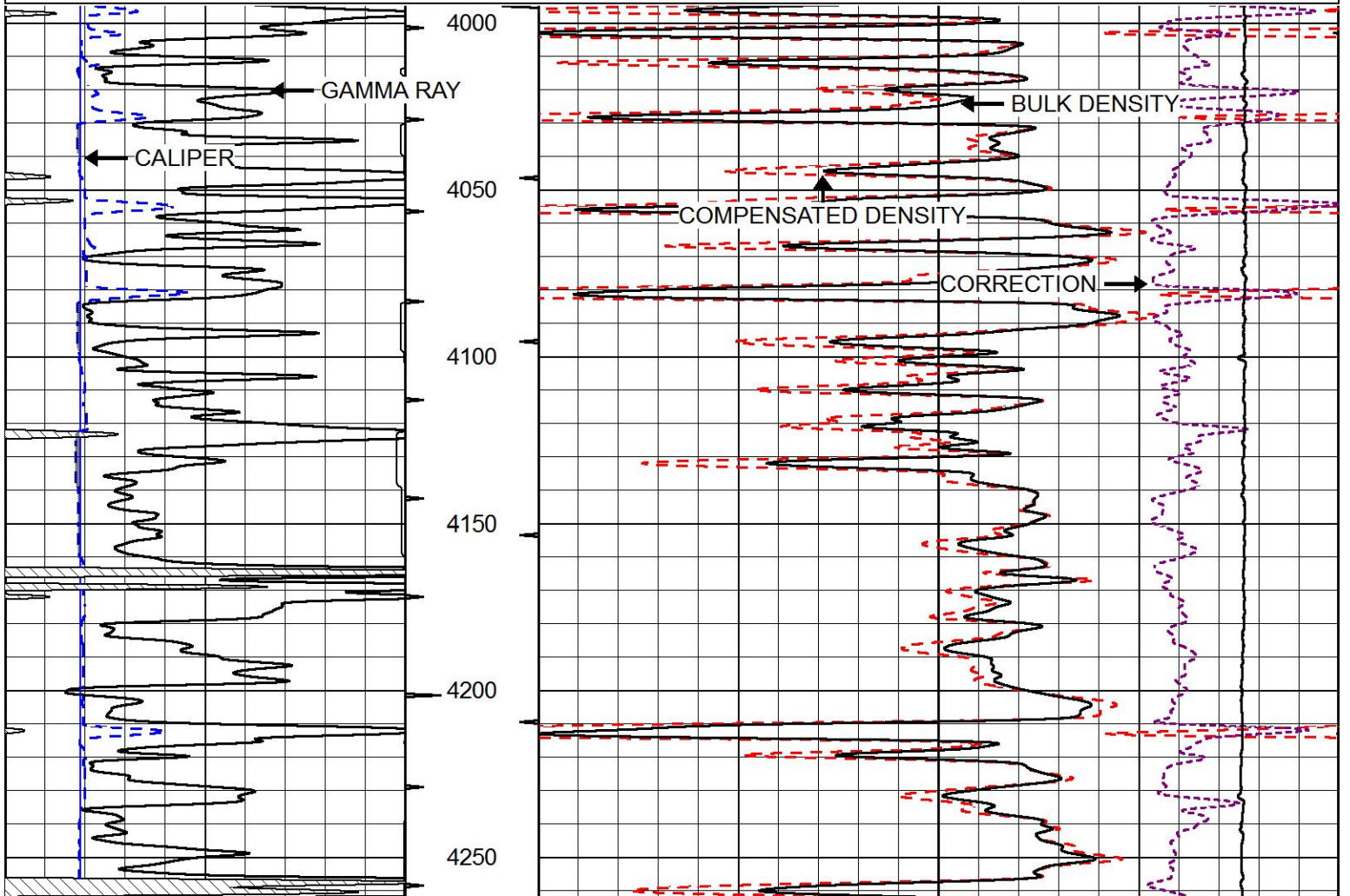


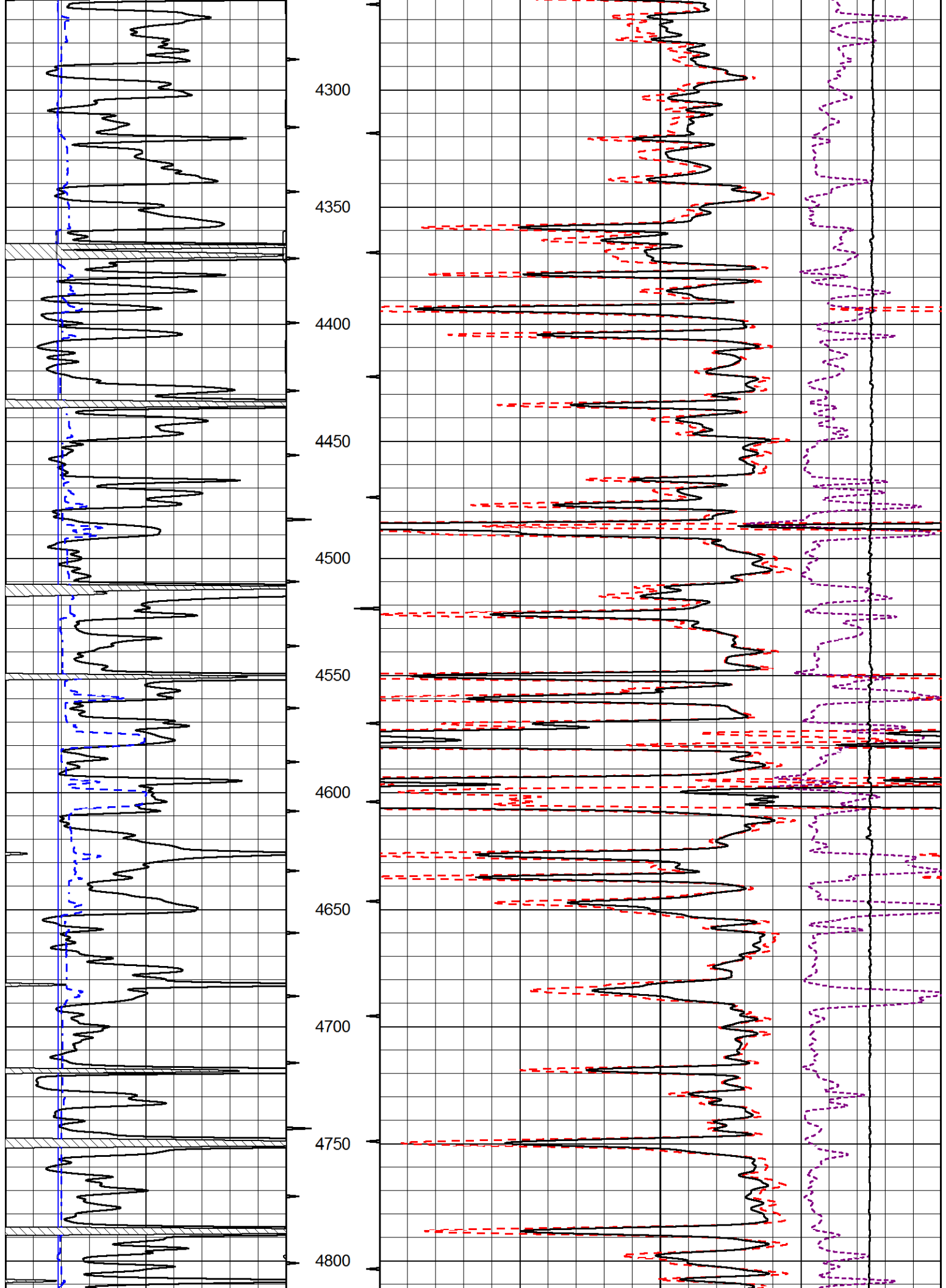
# MAIN PASS

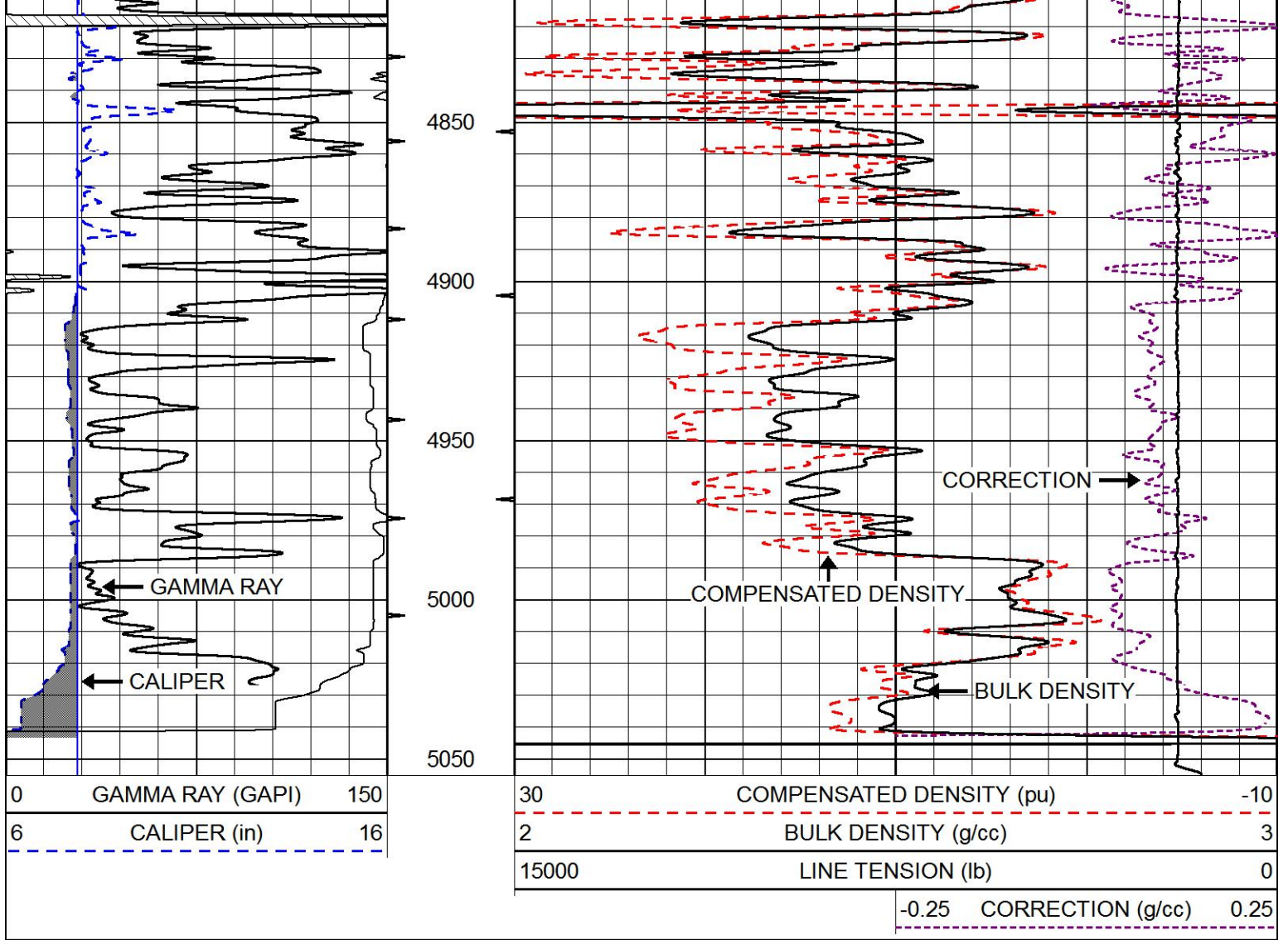
Database File brito\_egeland\_1\_14.db  
 Dataset Pathname stack/pass3.1  
 Presentation Format cdl  
 Dataset Creation Thu Feb 15 13:11:30 2018  
 Charted by Depth in Feet scaled 1:600

0	GAMMA RAY (GAPI)	150
6	CALIPER (in)	16

30	COMPENSATED DENSITY (pu)	-10
2	BULK DENSITY (g/cc)	3
15000	LINE TENSION (lb)	0
-0.25	CORRECTION (g/cc)	0.25



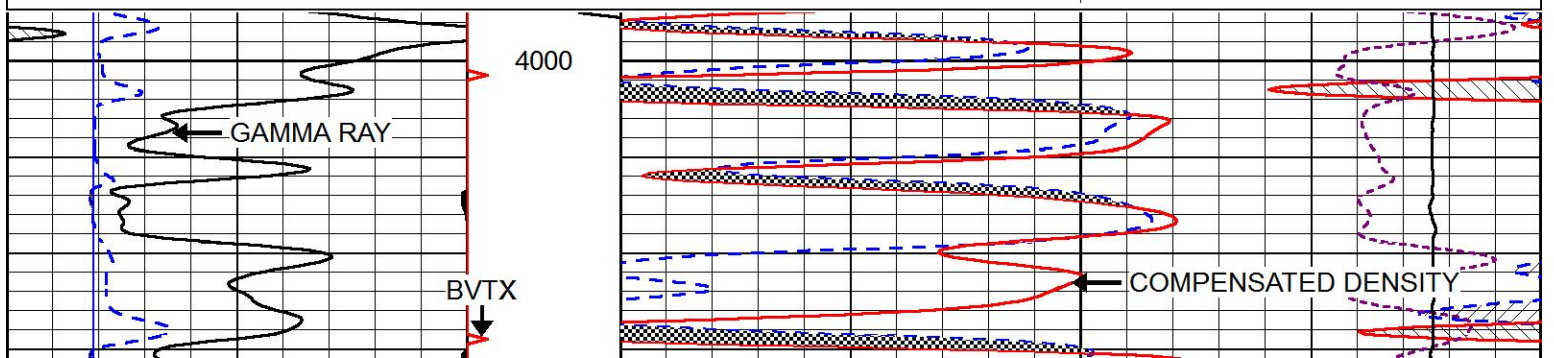


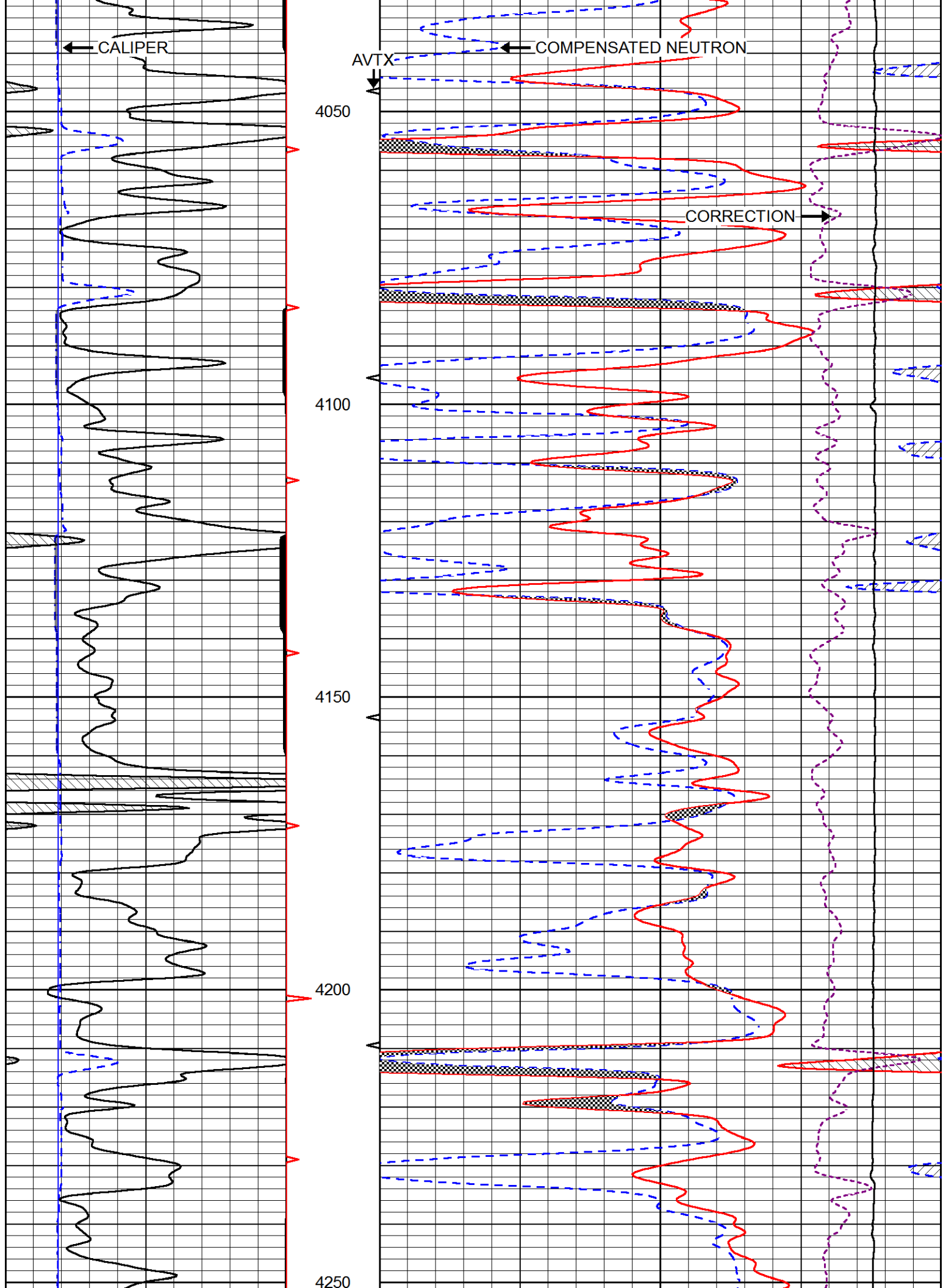


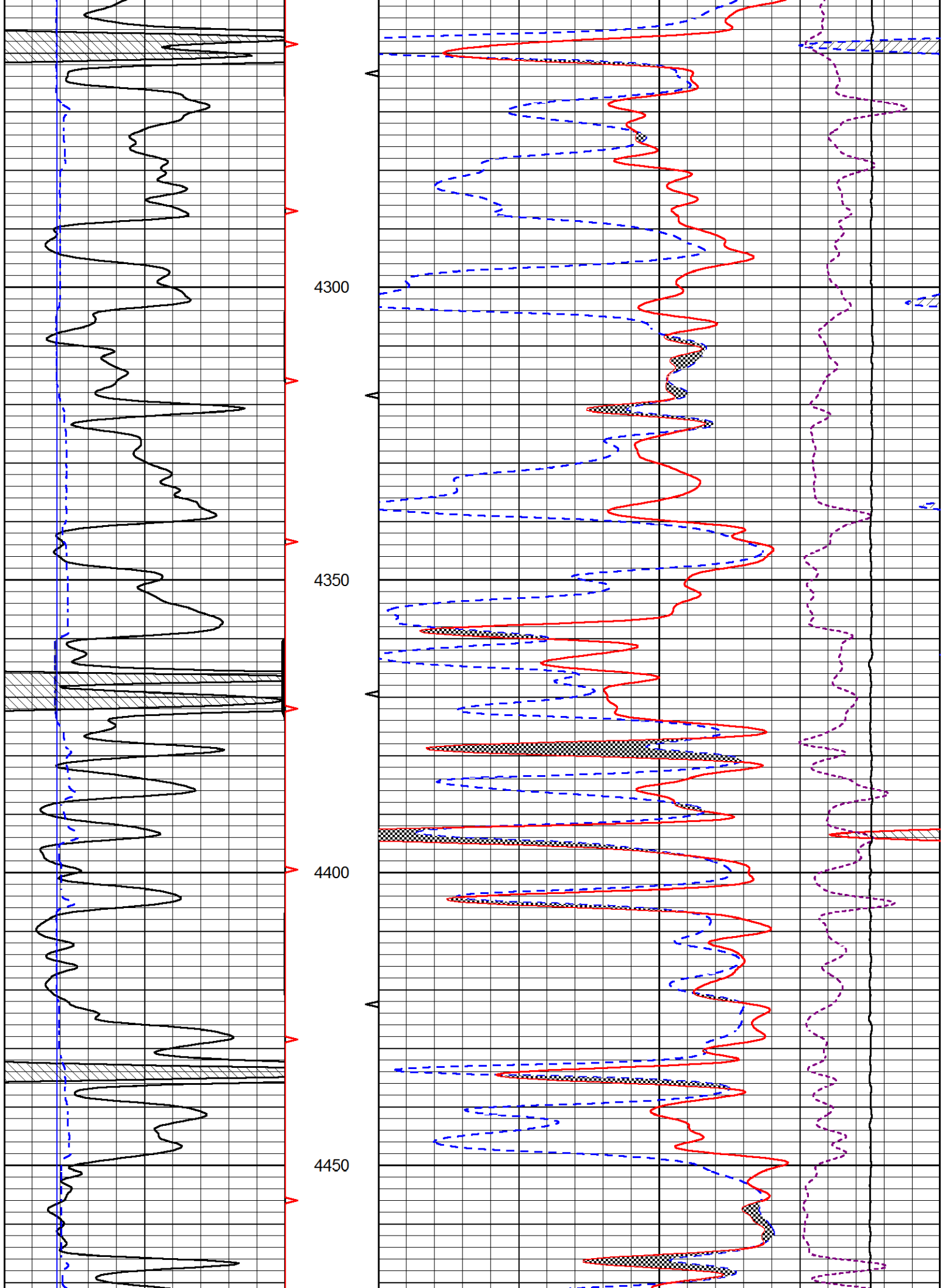
# MAIN PASS

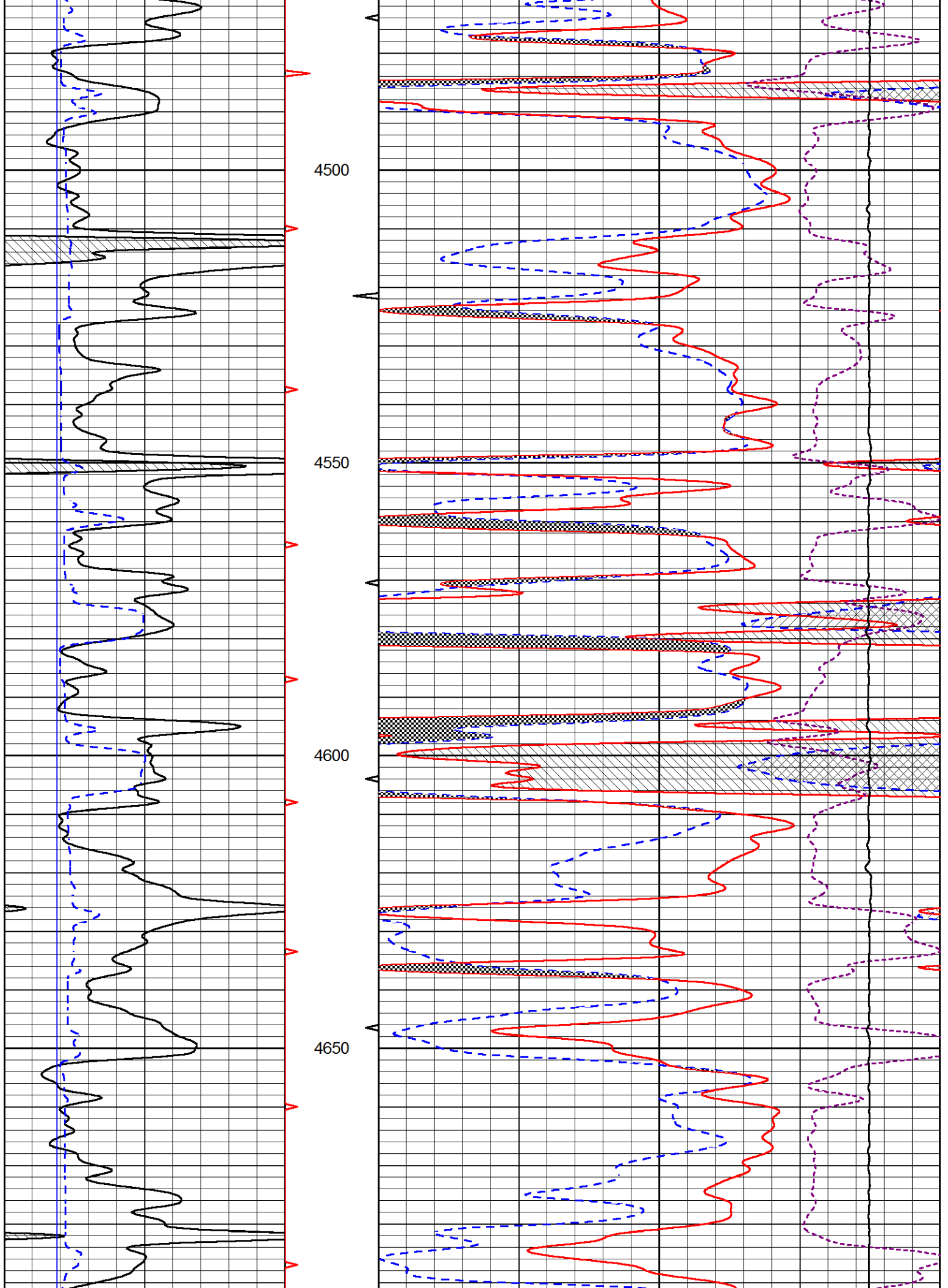
Database File      brito\_egeland\_1\_14.db  
 Dataset Pathname    stack/pass3.1  
 Presentation Format    cndlspec  
 Dataset Creation      Thu Feb 15 13:11:30 2018  
 Charted by            Depth in Feet scaled 1:240

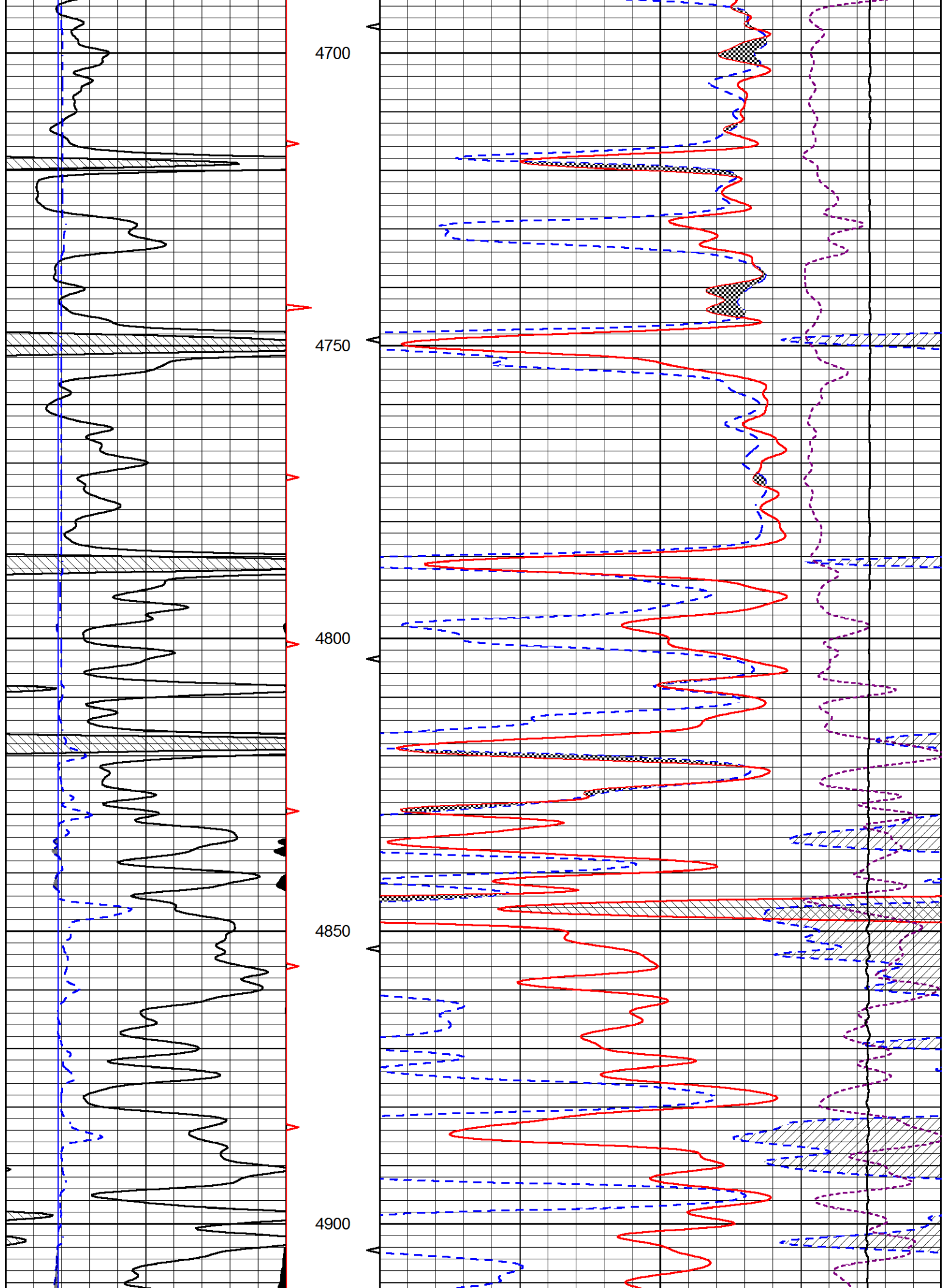
0	GAMMA RAY (GAPI)	150	30	CNLS (pu)	-10
6	dcal (in)	16	30	COMPENSATED DENSITY (2.71 ma) (pu)	-10
6	BIT SIZE (in)	16	15000	LINE TENSION (lb)	0
			-0.25	CORRECTION (g/cc)	0.25

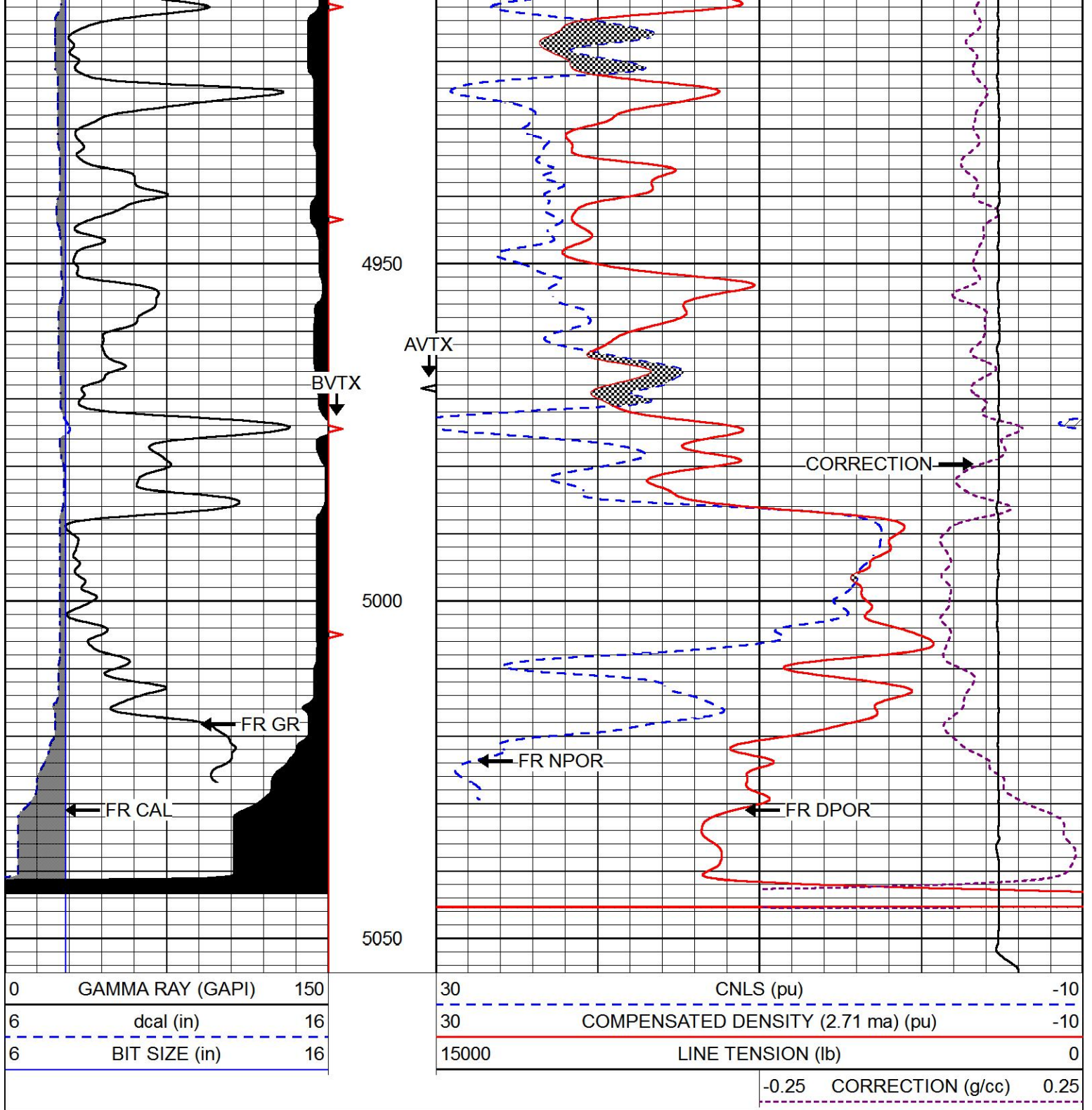










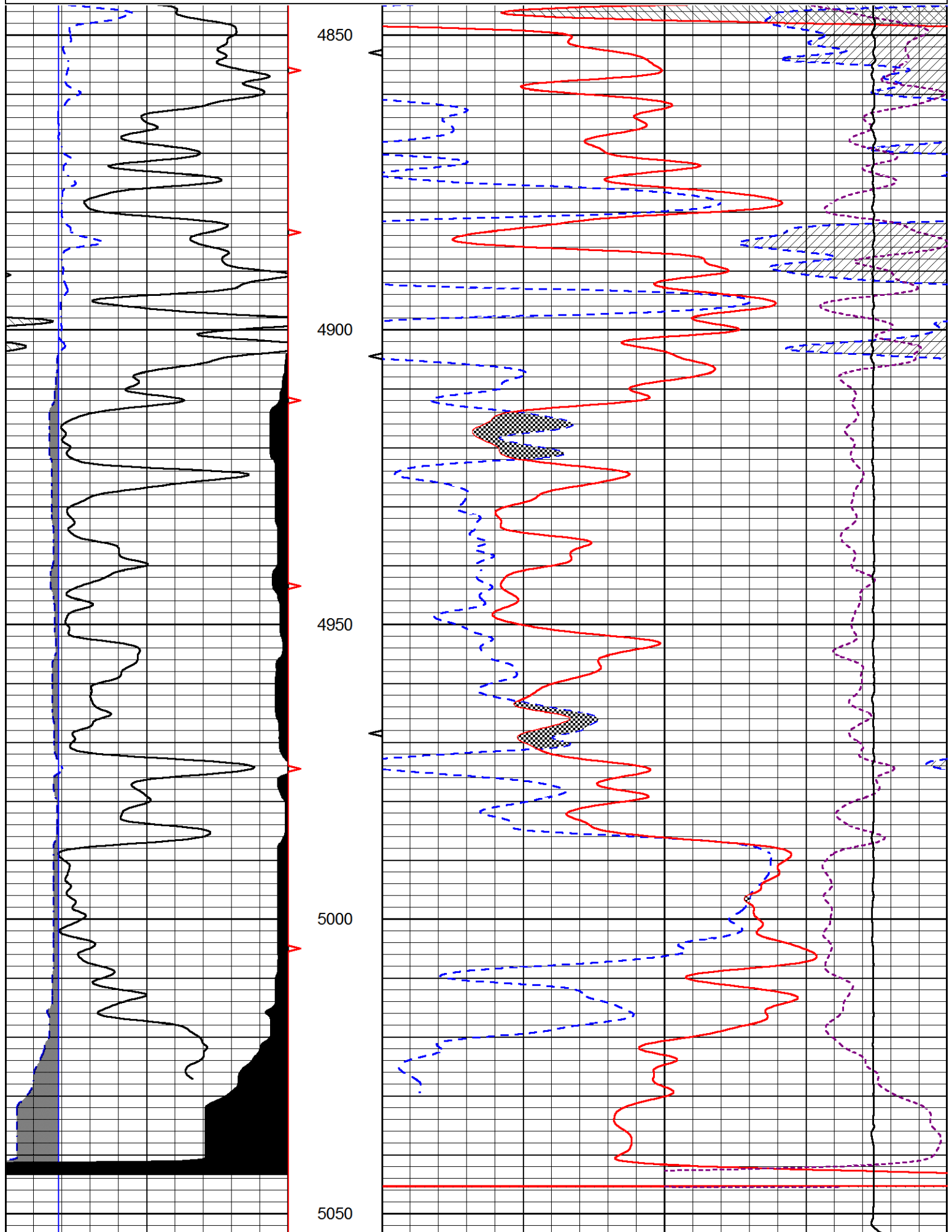


# REPEAT SECTION

Database File      brito\_egeland\_1\_14.db  
 Dataset Pathname    stack/pass2.1  
 Presentation Format    cndlspec  
 Dataset Creation      Thu Feb 15 13:11:53 2018  
 Charted by            Depth in Feet scaled 1:240

0	GAMMA RAY (GAPI)	150	30	CNLS (pu)	-10
6	dcal (in)	16	30	COMPENSATED DENSITY (2.71 ma) (pu)	-10

-0.25 CORRECTION (g/cc) 0.25





Calibrator Value:	1000.0	GAPI
Background Reading:	0.0	cps
Calibrator Reading:	6.2	cps
Sensitivity:	0.5200	GAPI/cps



**PIONEER**

Pioneer Energy Services

Company	BRITO OIL COMPANY, INC.
Well	EGELAND 1-14
Field	SRAMEK
County	SHERMAN
State	KANSAS