



**COMPENSATED
DENSITY/NEUTRON
LOG**

Company L.D. DRILLING, INC.

Well WALTERS #1-25

Field

County NORTON

State KANSAS

Location: API #: 15-137-20754-0000

1500' FSL & 2310' FEL

Other Services
DILMEL

SEC 25 TWP 5S RGE 23W

Elevation

Permanent Datum GROUND LEVEL Elevation 2298
Log Measured From KELLY BUSHING 5' A.G.L.
Drilling Measured From KELLY BUSHING

K.B. 2303
D.F. 2301
G.L. 2298

Date	2/24/20		
Run Number	ONE		
Depth Driller	3755		
Depth Logger	3754		
Bottom Logged Interval	3730		
Top Log Interval	3150		
Casing Driller	8 5/8" @ 249'		
Casing Logger	249'		
Bit Size	7 7/8		
Type Fluid in Hole	CHEMICAL MUD	CHLORIDES 900 PPM	
Density / Viscosity	9.2/54		
pH / Fluid Loss	11.0/6.4		
Source of Sample	FLOWLINE		
Rm @ Meas. Temp	1.70 @ 70F		
Rmf @ Meas. Temp	1.27 @ 70F		
Rmc @ Meas. Temp	2.04 @ 70F		
Source of Rmf / Rmc	MEASUREMENT		
Rm @ BHT	1.04 @ 114F		
Time Circulation Stopped	2 HOURS		
Time Logger on Bottom	////		
Maximum Recorded Temperature	114F		
Equipment Number	3802		
Location	HAYS, KANSAS		
Recorded By	JASON CAPPELLUCCI		
Witnessed By	JEFF CHRISTIAN		

<<< Fold Here >>>

All interpretations are opinions based on inferences from electrical or other measurements and we cannot and do not guarantee the accuracy or correctness of any interpretation, and we shall not, except in the case of gross or willful negligence on our part, be liable or responsible for any loss, costs, damages, or expenses incurred or sustained by anyone resulting from any interpretation made by any of our officers, agents or employees. These interpretations are also subject to our general terms and conditions set out in our current Price Schedule.

Comments

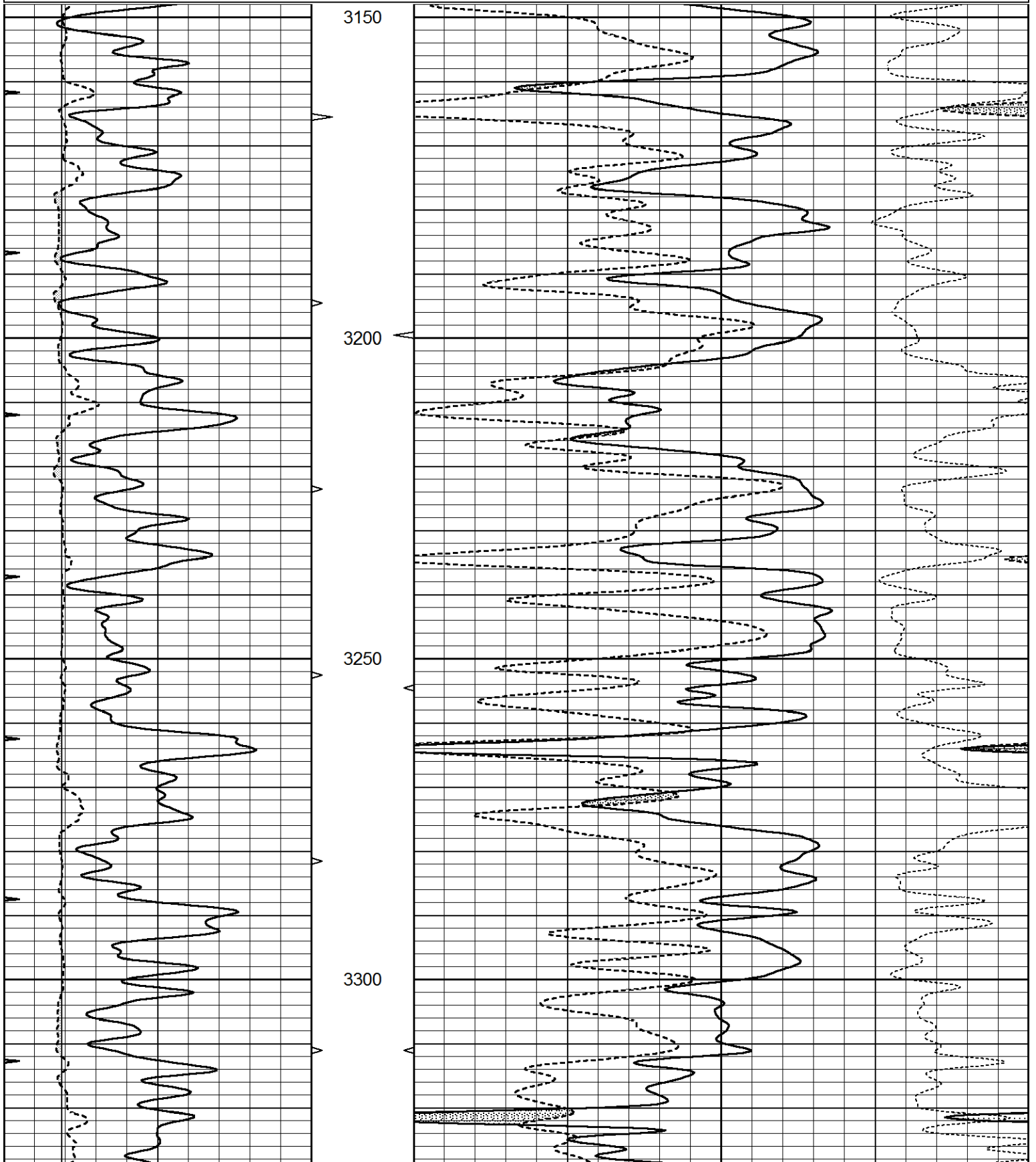
THANK YOU FOR USING ELI WIRELINE SERVICES, HAYS, KS. (785) 628-6395
DIRECTIONS
HILL CITY, KS. - NORTH TO COUNTY LINE - 1 MORE MILE NORTH - WEST INTO

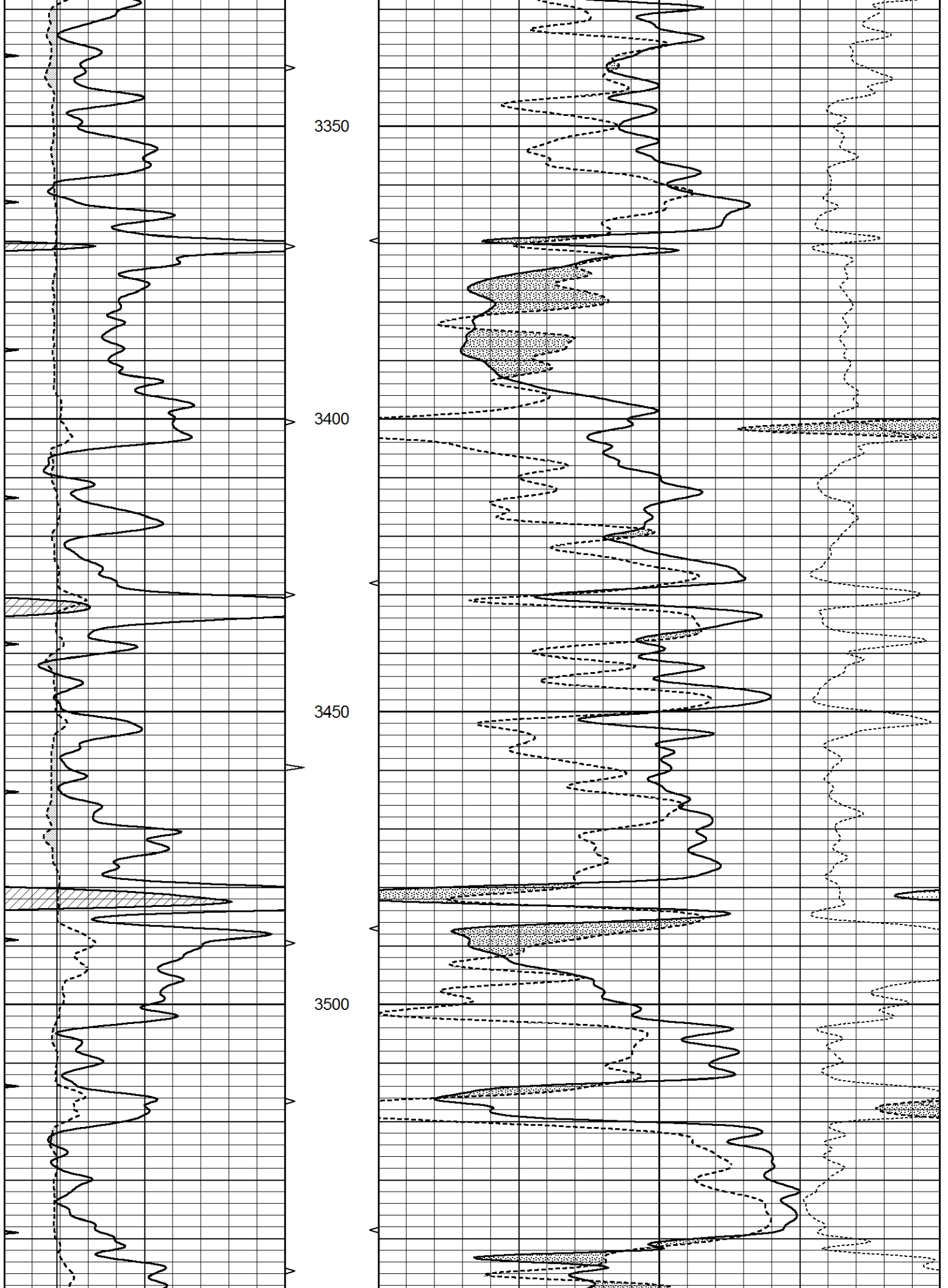


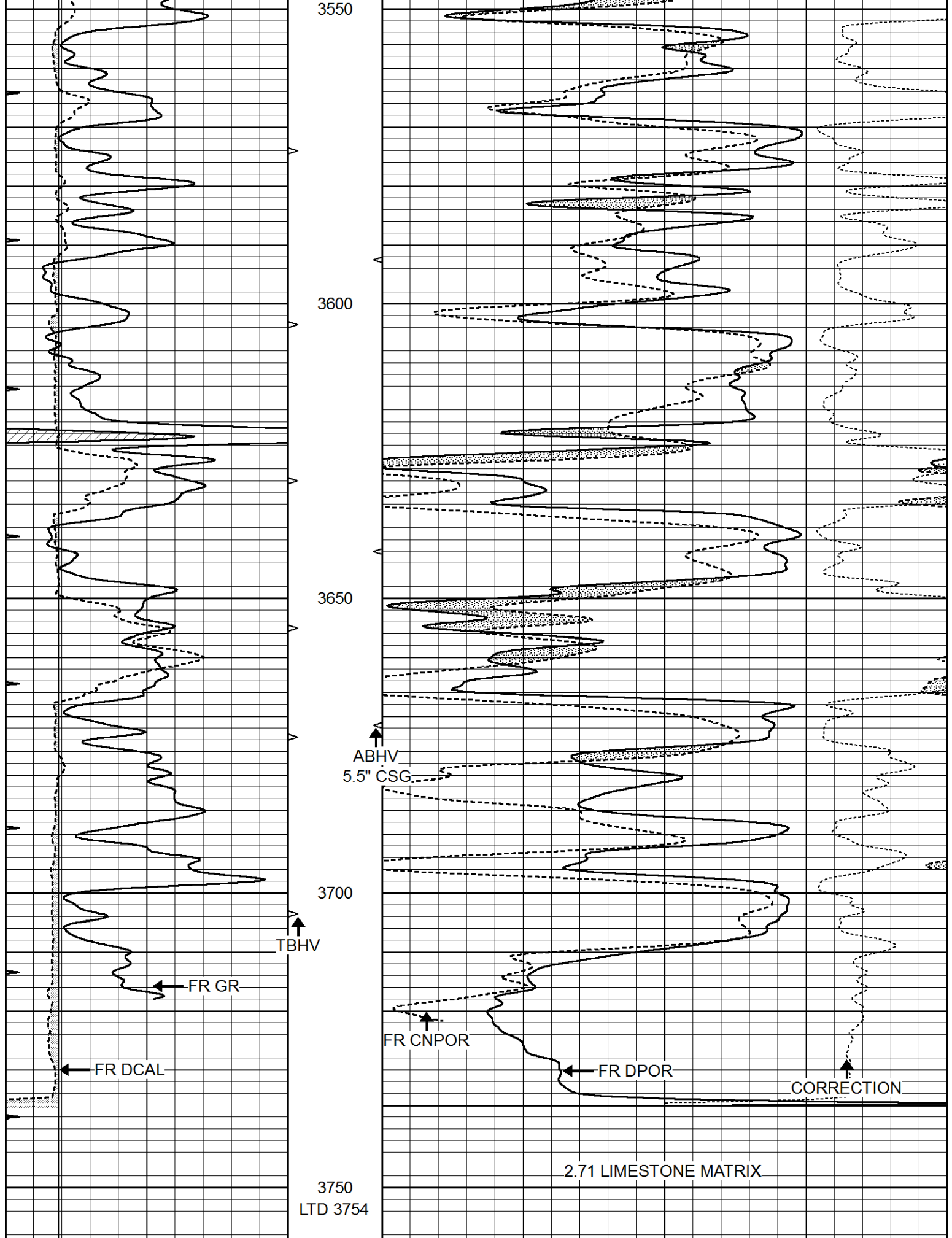
MAIN SECTION

Database File 4730ddn.db
 Dataset Pathname pass3.1
 Presentation Format _den_neu
 Dataset Creation Mon Feb 24 06:13:23 2020
 Charted by Depth in Feet scaled 1:240

0	GAMMA RAY (GAPI)	150	AVTX	30	COMPENSATED DENSITY (pu)	-10
0	MINMK	20	10 (ft3) 0	30	COMPENSATED NEUTRON (pu)	-10
6	CALIPER (in)	16	BVTX		-0.25 CORRECTION (g/cc)	0.25
			0 (ft3) 10			







3550

3600

3650

3700

3750

LTD 3754

ABHV
5.5\"/>

TBHV

FR GR

FR DCAL

FR CNPOR

FR DPOR

CORRECTION

2.71 LIMESTONE MATRIX

0 GAMMA RAY (GAPI) 150 AVTX 30 30 COMPENSATED DENSITY (pu) -10

0 MINMK 20 10 (ft3) 0 30 COMPENSATED NEUTRON (pu) -10

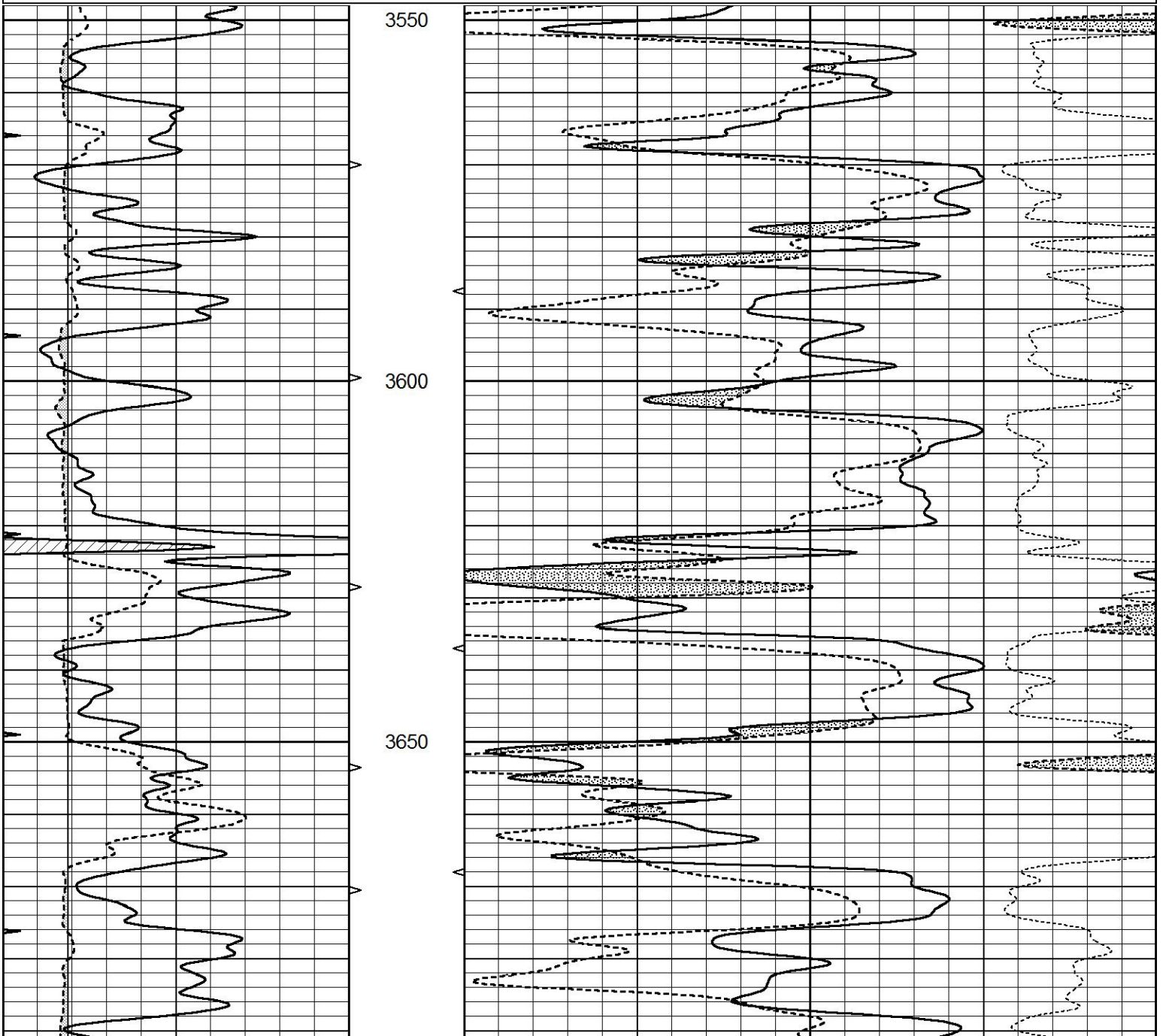
6	CALIPER (in)	16	BVTX	-0.25	CORRECTION (g/cc)	0.25
			0 (ft3) 10			

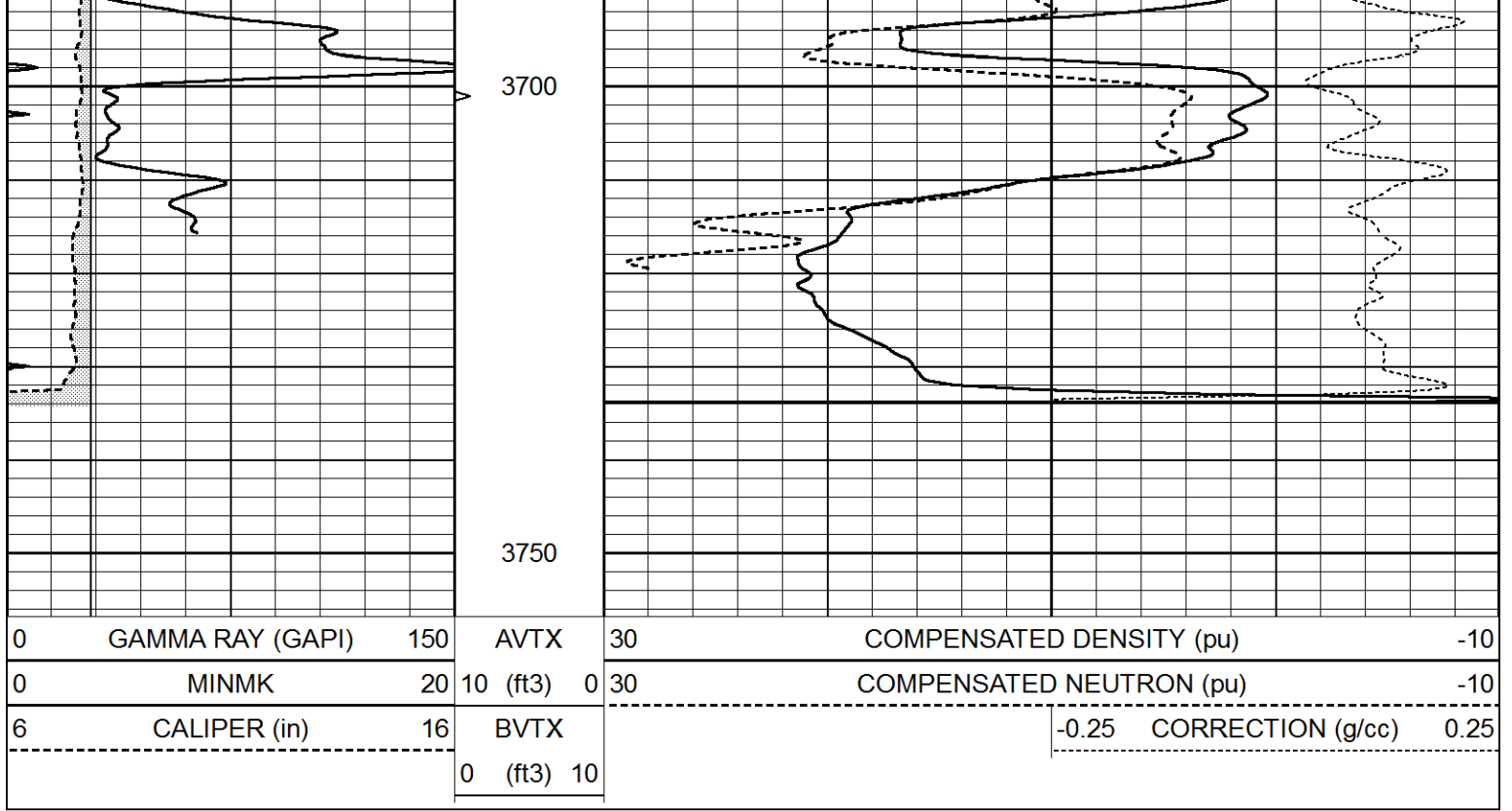


REPEAT SECTION

Database File 4730ddn.db
 Dataset Pathname pass2.1
 Presentation Format _den_neu
 Dataset Creation Mon Feb 24 06:32:16 2020
 Charted by Depth in Feet scaled 1:240

0	GAMMA RAY (GAPI)	150	AVTX	30	COMPENSATED DENSITY (pu)	-10
0	MINMK	20	10 (ft3)	0 30	COMPENSATED NEUTRON (pu)	-10
6	CALIPER (in)	16	BVTX		-0.25	CORRECTION (g/cc) 0.25
			0 (ft3) 10			





Calibration Report

Database File 4730ddn.db
 Dataset Pathname pass2.1
 Dataset Creation Mon Feb 24 06:32:16 2020

Dual Induction Calibration Report

Serial-Model: FW1410-55-Probe
 Surface Cal Performed: Tue Feb 19 11:44:18 2019
 Downhole Cal Performed: Tue Feb 19 11:44:24 2019
 After Survey Verification Performed: Tue Feb 19 11:44:27 2019

Surface Calibration

Loop:	Readings			References			Results	
	Air	Loop		Air	Loop		m	b
Deep	0.011	0.656	V	1.000	400.000	mmho/m	618.595	-5.524
Medium	-0.000	0.731	V	1.000	464.000	mmho/m	632.856	1.197
Internal:	Zero	Cal		Zero	Cal		m	b
Deep	0.007	0.649	V	0.000	400.000	mmho/m	623.784	-4.595
Medium	0.004	0.743	V	0.000	464.000	mmho/m	627.284	-2.251

Downhole Calibration

	Readings			References			Results	
	Zero	Cal		Zero	Cal		m'	b'
Deep	-0.824	395.917	mmho/m	-0.976	397.550	mmho/m	1.004	-0.149
Medium	3.565	471.327	mmho/m	3.468	471.590	mmho/m	1.001	-0.099
LL3		7.503	V		1500.000	Ohm-m		
		0.001	V		20.000	Ohm-m		
		-7.481	V		3745.000	mmho-m		

After Survey Verification

	Readings			Targets			Results	
	Zero	Cal		Zero	Cal		m'	b'

	Zero	Cal		Zero	Cal		m	b
Deep	0.000	0.000	mmho/m	-0.824	395.917	mmho/m	1.000	0.000
Medium	0.000	0.000	mmho/m	3.565	471.327	mmho/m	1.000	0.000
LL3		0.000	Ohm-m		1500.000	Ohm-m		
		0.000	Ohm-m		20.000	Ohm-m		
		0.000	mmho-m		3745.000	mmho-m		

Compensated Neutron Calibration Report

Serial Number: 080621PMC
Tool Model: NABORS

PRE-SURVEY VERIFICATION

Detector	Readings	Measured	Target
Short Space	cps		
Long Space	cps	pu	pu

POST-SURVEY VERIFICATION

Detector	Readings	Measured	Target
Short Space	cps		
Long Space	cps	pu	pu

Gamma Ray Calibration Report

Serial Number: 7
Tool Model: Probe1
Performed: Tue Dec 10 10:02:55 2019

Calibrator Value: 1.0 GAPI

Background Reading: 0.0 cps
Calibrator Reading: 1.0 cps

Sensitivity: 0.4800 GAPI/cps