



# DUAL INDUCTION LOG

Company MAI OIL  
 Well URBANEK #2  
 Field PROGRESS  
 County ELLSWORTH  
 State KANSAS

Company MAI OIL  
 Well URBANEK #2  
 Field PROGRESS  
 County ELLSWORTH  
 State KANSAS

Location: API # : 15-053-21360-00-00  
 NW-SE-N-E-SE  
 1775 FSL & 544 FEL  
 SEC 15 TWP 16S RGE 10W  
 Permanent Datum GROUND LEVEL Elevation 1894'  
 Log Measured From KELLY BUSHING & A.G.L.  
 Drilling Measured From KELLY BUSHING  
 Other Services CD/LCN/LM/EL  
 Elevation K.B. 1902  
 D.F. 1900  
 G.L. 1894

Date	05/02/18
Run Number	ONE
Depth Driller	3480
Depth Logger	3483
Bottom Logged Interval	3481
Top Log Interval	50
Casing Driller	8 5/8@ 428
Casing Logger	428
Bit Size	7 7/8"
Type Fluid in Hole	CHEMICAL MUD
Density / Viscosity	9.4/48
pH / Fluid Loss	9.0/9.6
Source of Sample	FLOWLINE
Rm @ Meas. Temp	.80@70
Rmt @ Meas. Temp	.60@70
Rmc @ Meas. Temp	.96@70
Source of Rmf / Rmc	MEASURED
Rm @ BHT	.50@111
Time Circulation Stopped	2 HOURS
Time Logger on Bottom	////
Maximum Recorded Temperature	115F
Equipment Number	4010
Location	HAYS, KANSAS
Recorded By	GUS PFANENSTIEL
Witnessed By	WYATT URBAN

<<< Fold Here >>>

All interpretations are opinions based on inferences from electrical or other measurements and we cannot and do not guarantee the accuracy or correctness of any interpretation, and we shall not, except in the case of gross or willful negligence on our part, be liable or responsible for any loss, costs, damages, or expenses incurred or sustained by anyone resulting from any interpretation made by any of our officers, agents or employees. These interpretations are also subject to our general terms and conditions set out in our current Price Schedule.

### Comments

THANK YOU FOR USING ELI WIRELINE, HAYS, KS. (785) 628-6395

DIRECTIONS  
 HOLYROOD TO 6 RD. NORTH 4.5 MILES  
 WEST INTO



# MAIN PASS

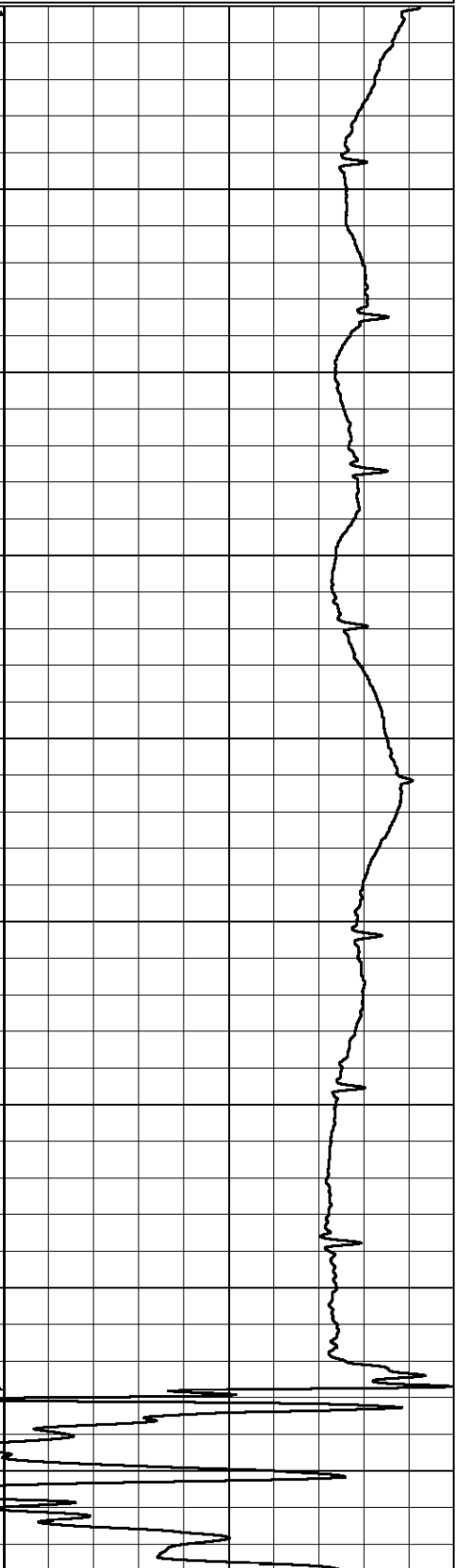
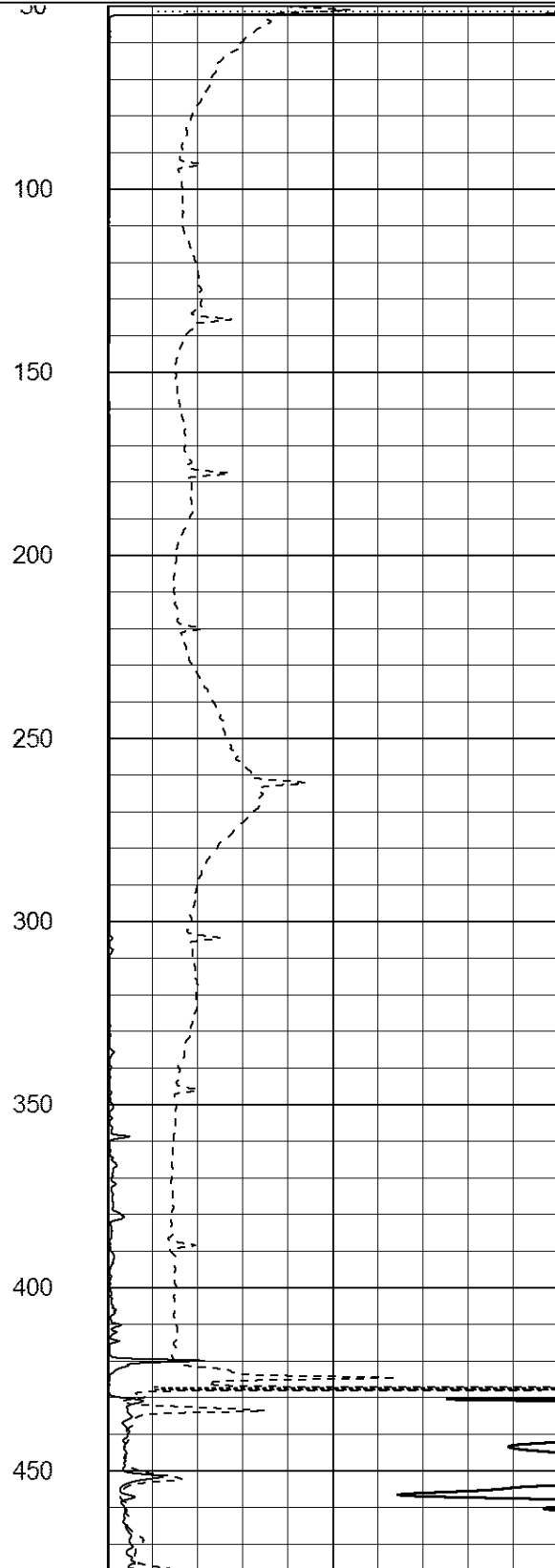
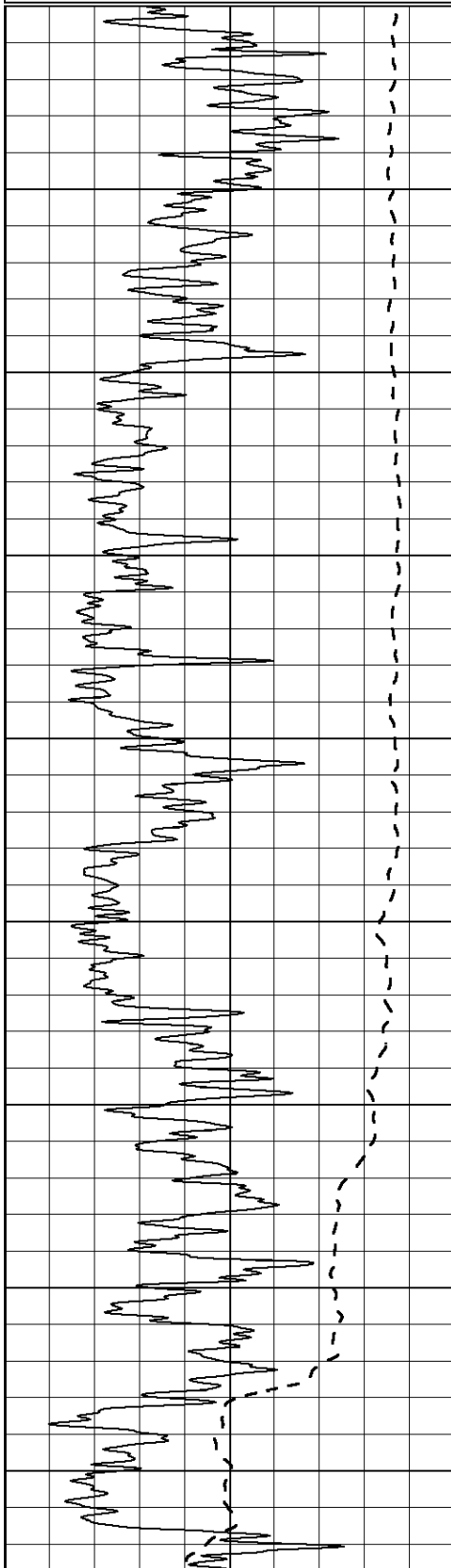
Database File: 2422ddn.db  
 Dataset Pathname: pass3.1  
 Presentation Format: \_dil2  
 Dataset Creation: Wed May 02 22:47:31 2018 by Calc Open-Cased 090629  
 Charted by: Depth in Feet scaled 1:600

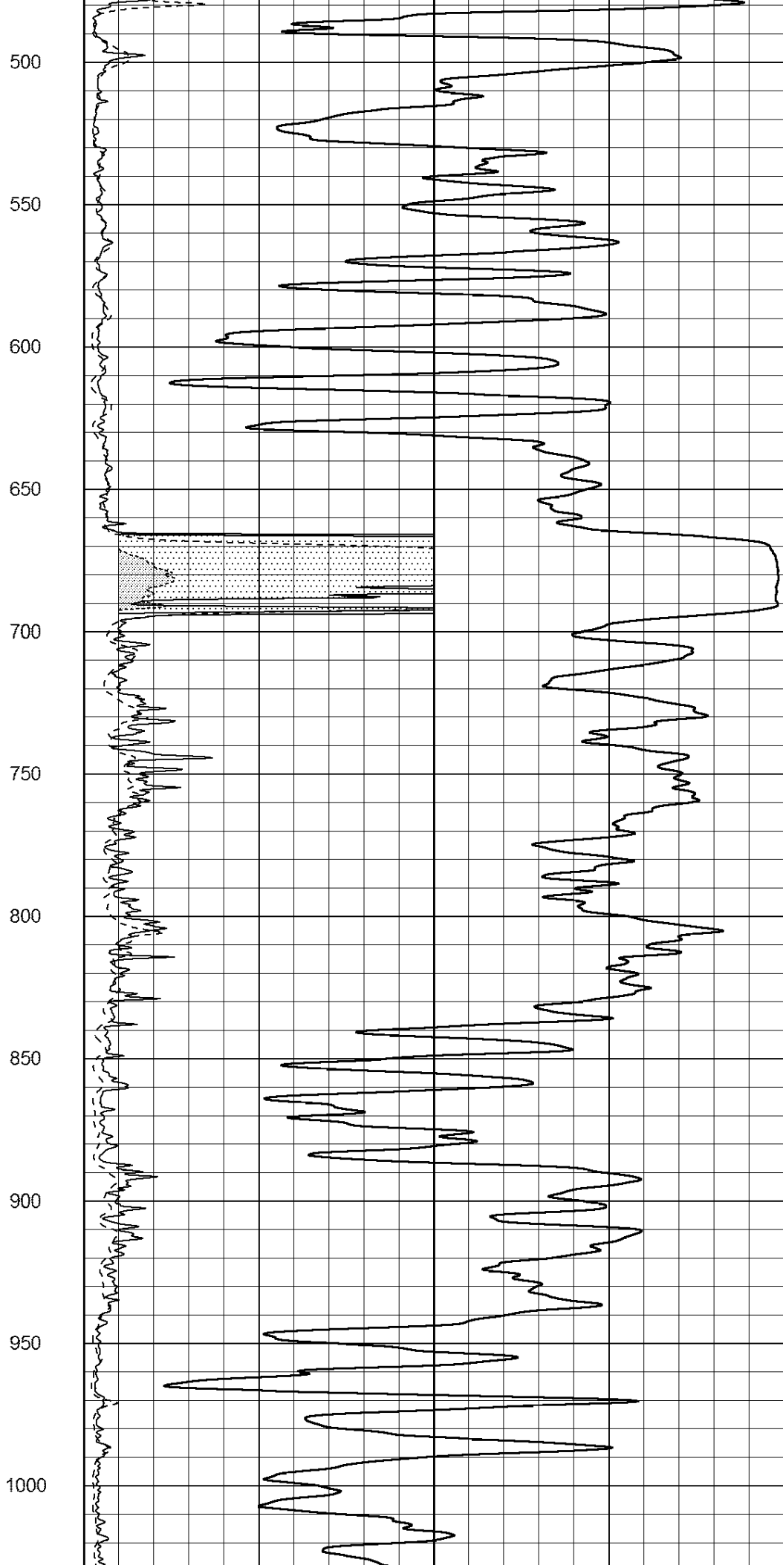
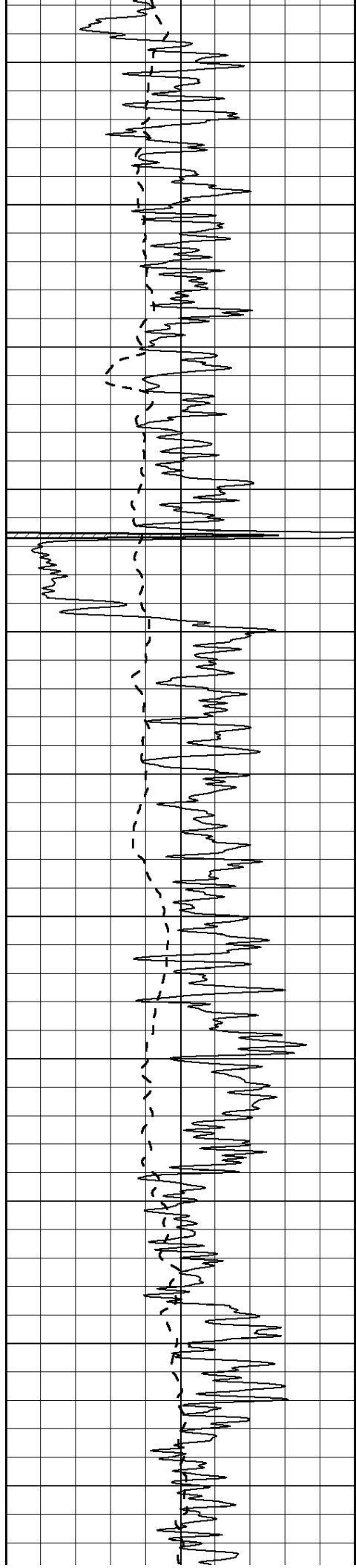
0	Gamma Ray (GAPI)	150
-100	SP (mV)	100

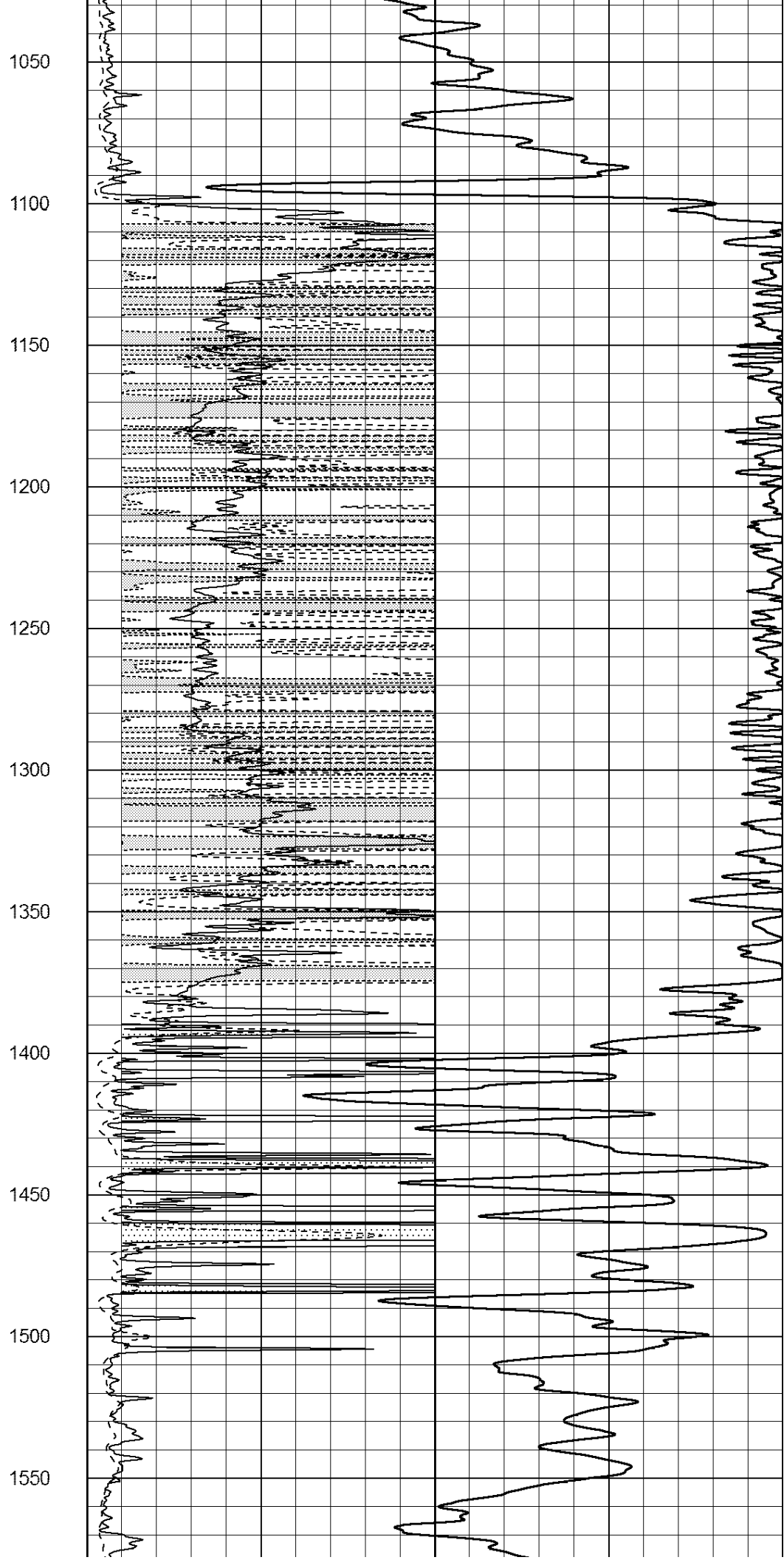
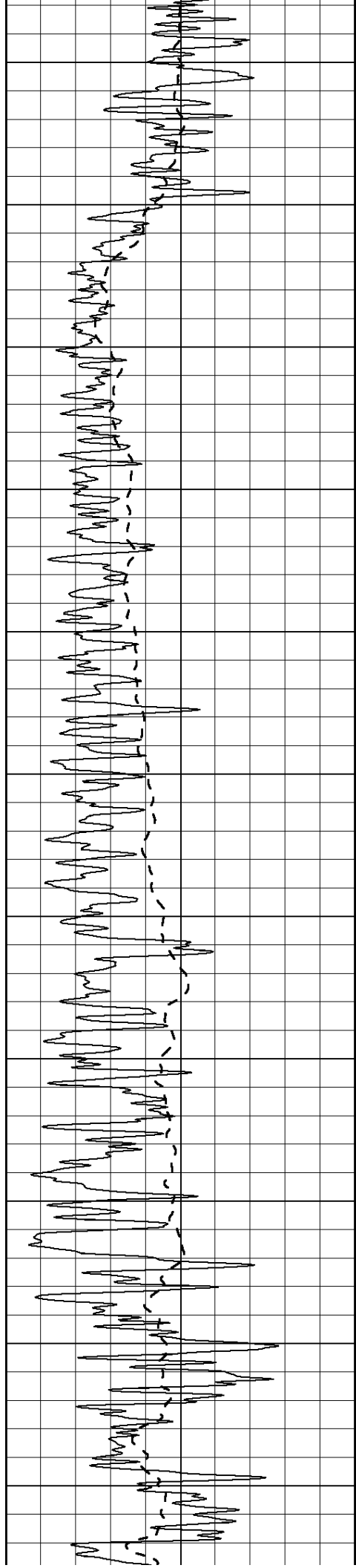
0	RLL3 (Ohm-m)	50
0	RILD (Ohm-m)	50

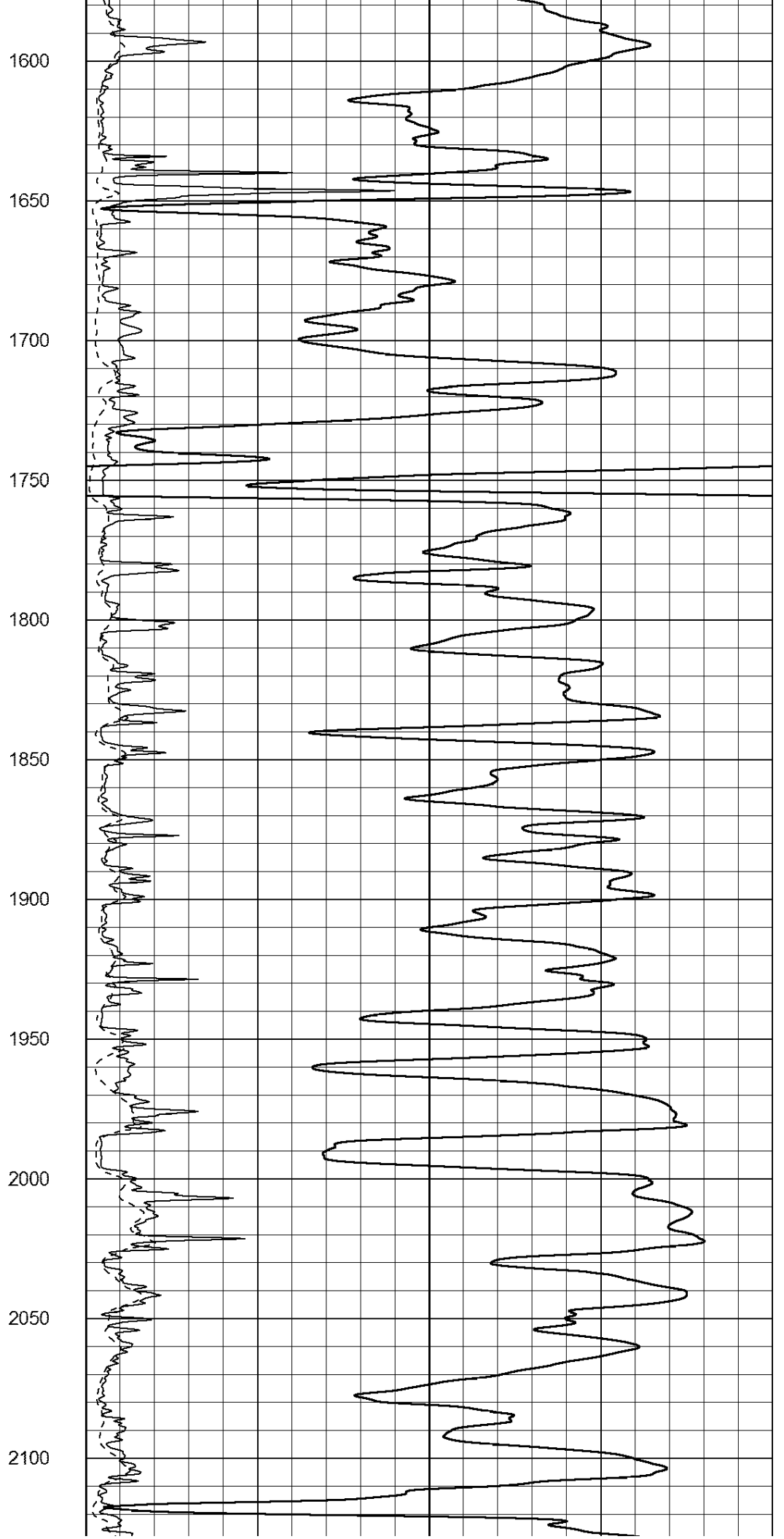
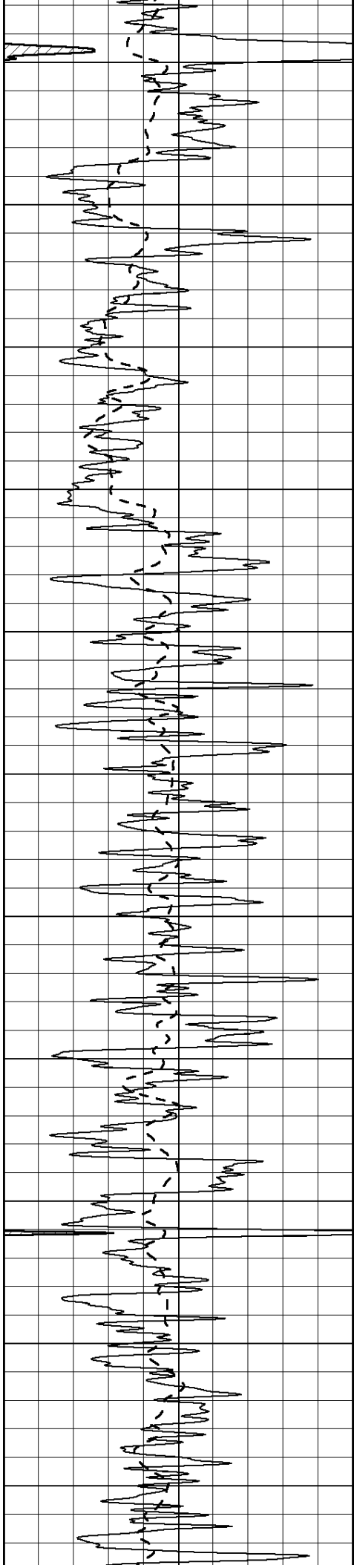
1000	CILD (mmho/m)	0
------	---------------	---

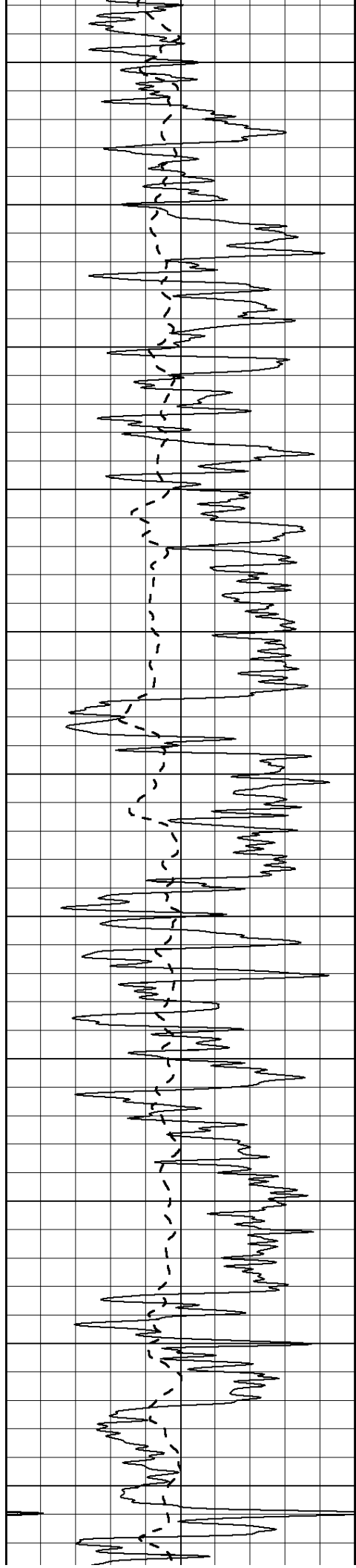
50	RILD X10 (Ohm-m)	500
50	RLL3 X10 (Ohm-m)	500











2150

2200

2250

2300

2350

2400

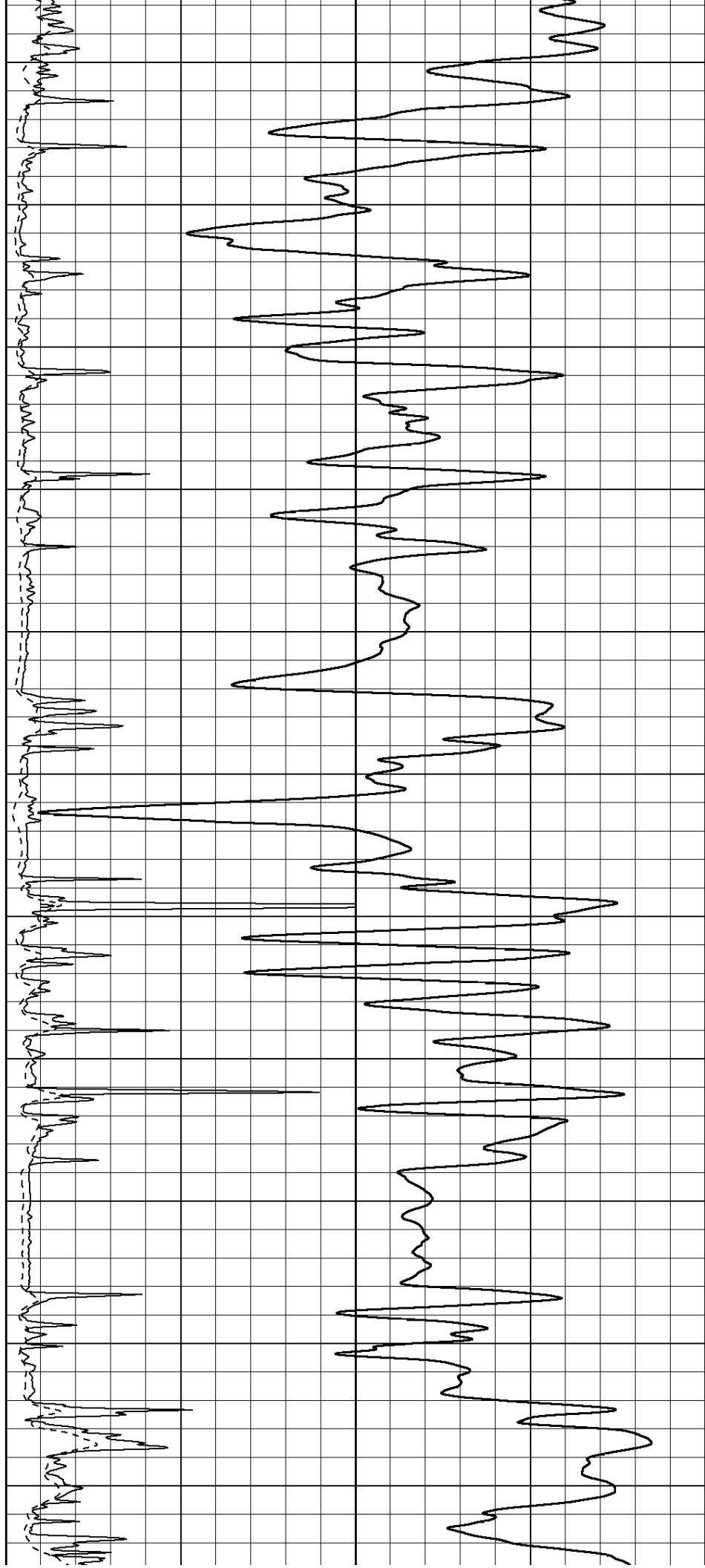
2450

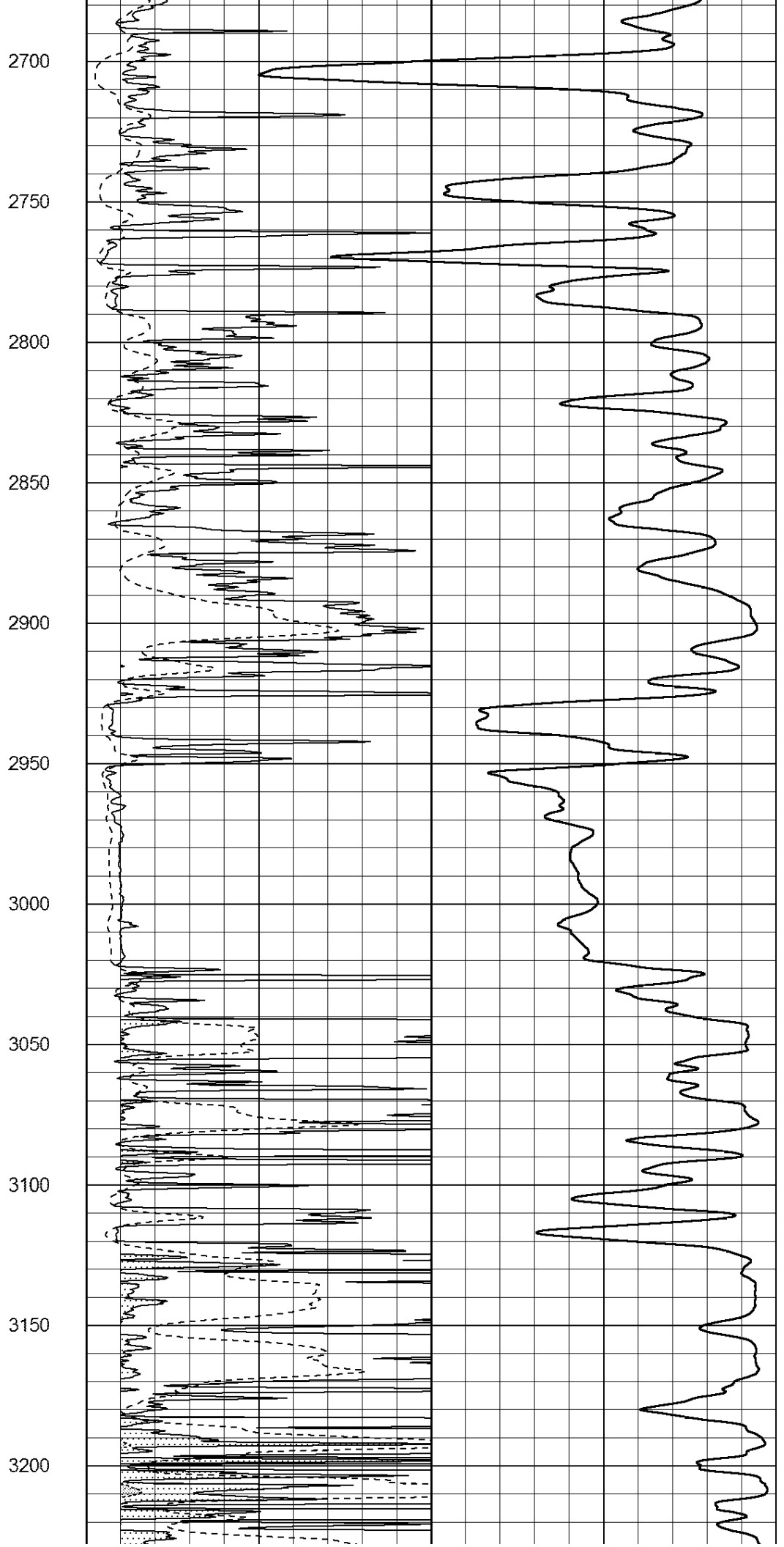
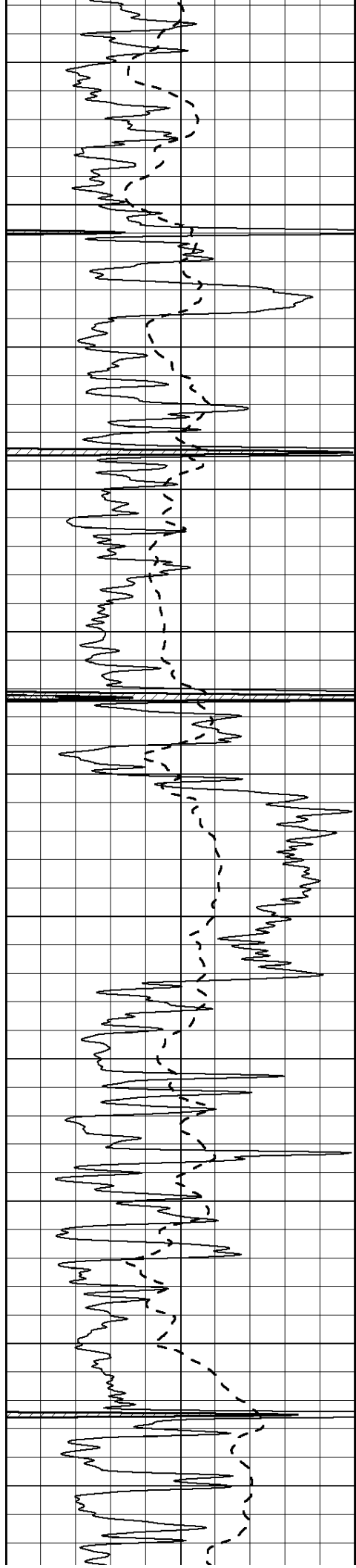
2500

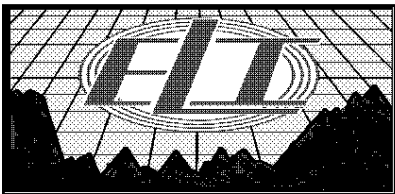
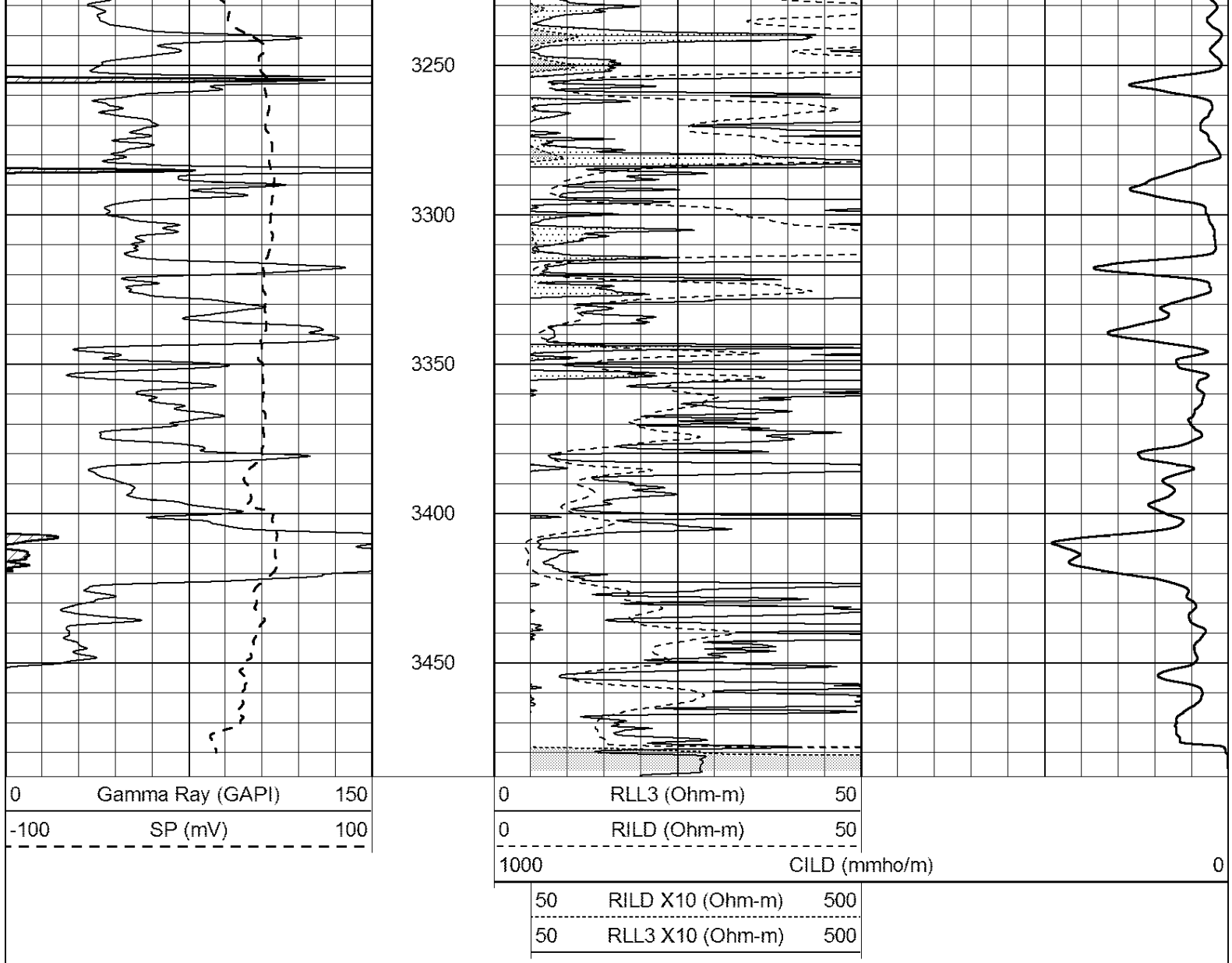
2550

2600

2650



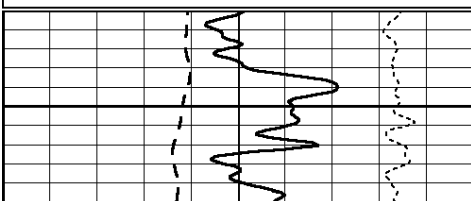




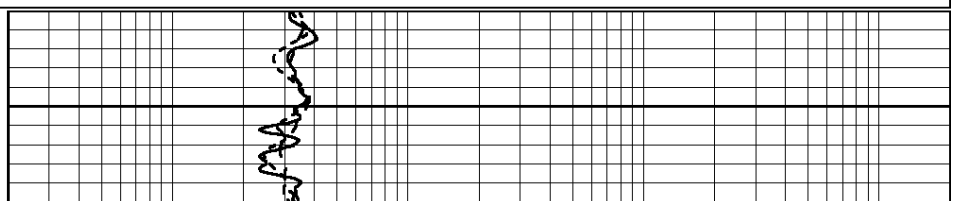
# MAIN PASS

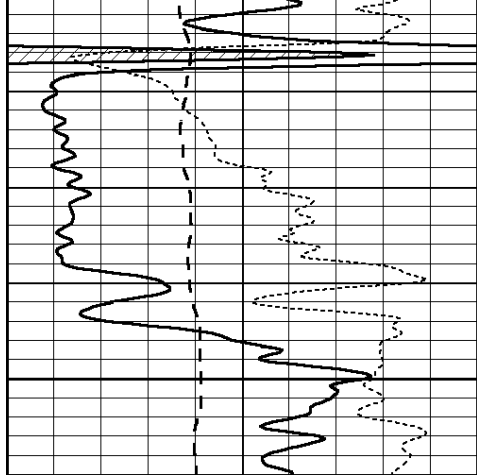
Database File: 2422ddn.db  
 Dataset Pathname: pass3.1  
 Presentation Format: \_dil  
 Dataset Creation: Wed May 02 22:47:31 2018 by Calc Open-Cased 090629  
 Charted by: Depth in Feet scaled 1:240

0	GAMMA RAY (GAPI)	150	0.2	SHALLOW GUARD (Ohm-m)	2000
-100	SP (mV)	100	0.2	DEEP INDUCTION (Ohm-m)	2000
-250	Rxo/Rt	50	0.2	MEDIUM INDUCTION (Ohm-m)	2000
0	MINMK	20			



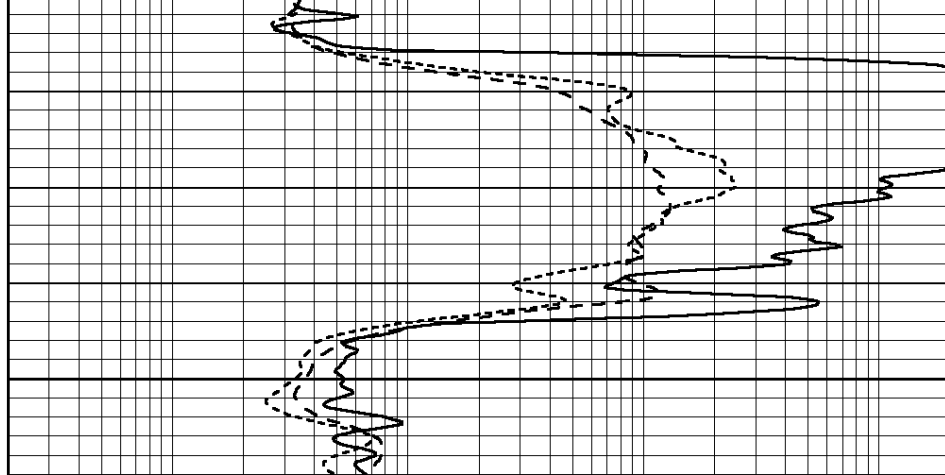
650



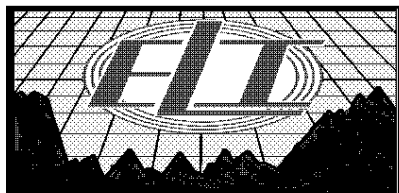


0	GAMMA RAY (GAPI)	150
-100	SP (mV)	100
-250	Rxo/Rt	50
0	MINMK	20

700



0.2	SHALLOW GUARD (Ohm-m)	2000
0.2	DEEP INDUCTION (Ohm-m)	2000
0.2	MEDIUM INDUCTION (Ohm-m)	2000

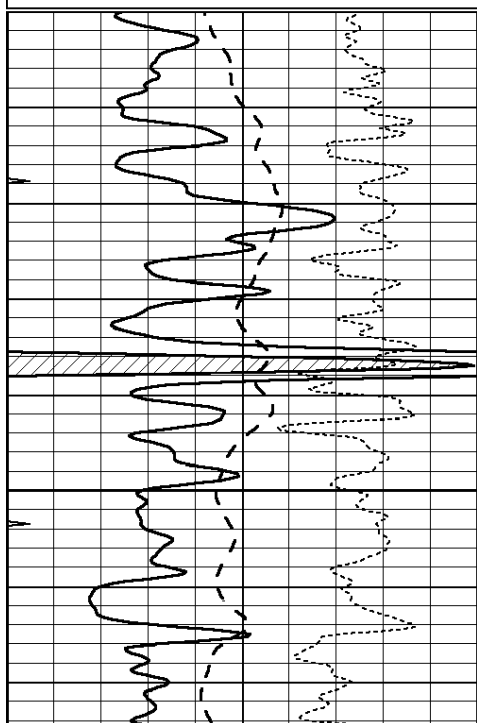


# MAIN PASS

Database File: 2422ddn.db  
 Dataset Pathname: pass3.1  
 Presentation Format: \_dil  
 Dataset Creation: Wed May 02 22:47:31 2018 by Calc Open-Cased 090629  
 Charted by: Depth in Feet scaled 1:240

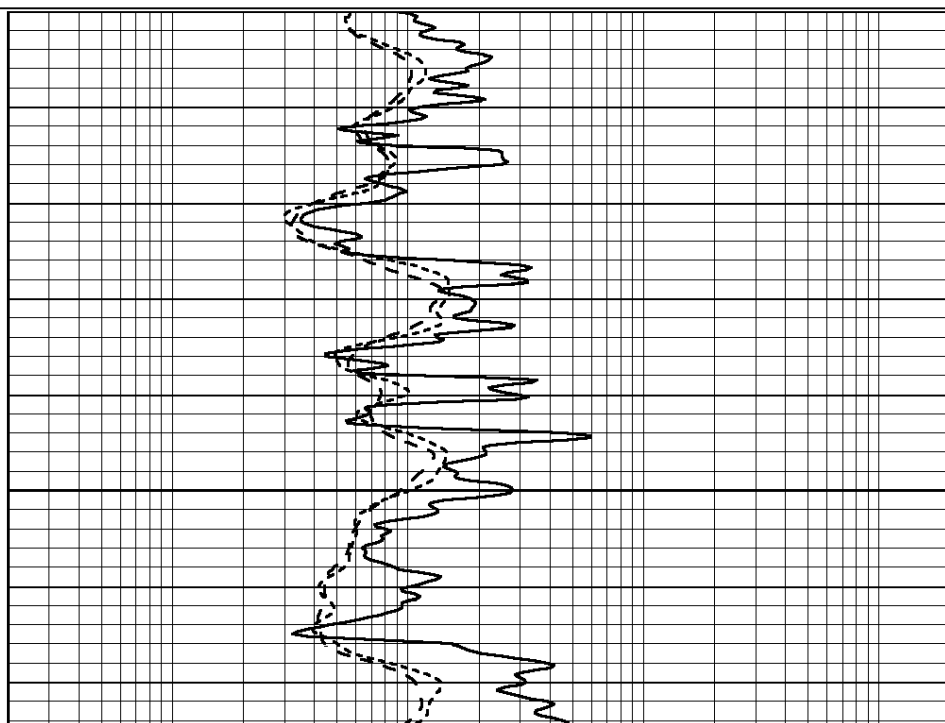
0	GAMMA RAY (GAPI)	150
-100	SP (mV)	100
-250	Rxo/Rt	50
0	MINMK	20

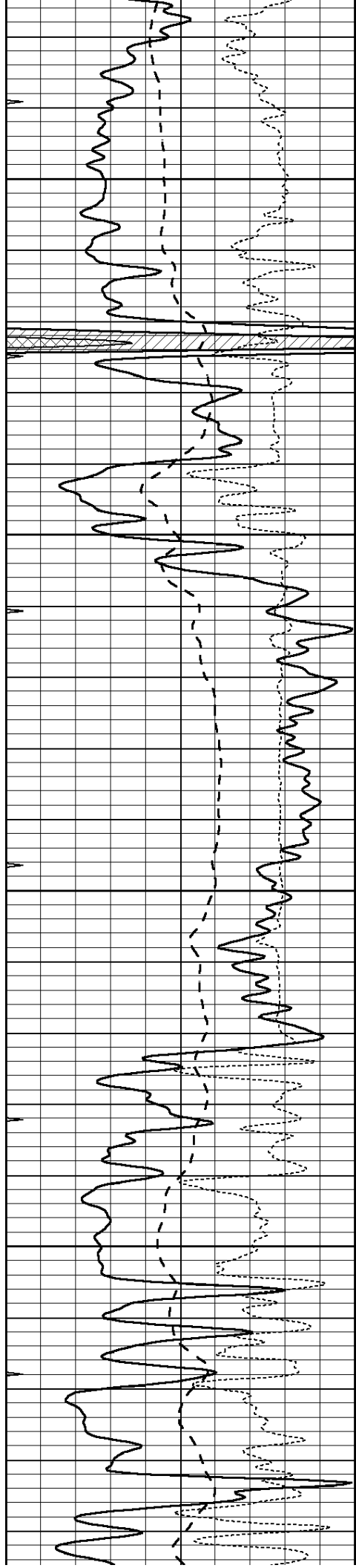
0.2	SHALLOW GUARD (Ohm-m)	2000
0.2	DEEP INDUCTION (Ohm-m)	2000
0.2	MEDIUM INDUCTION (Ohm-m)	2000



2000

2850



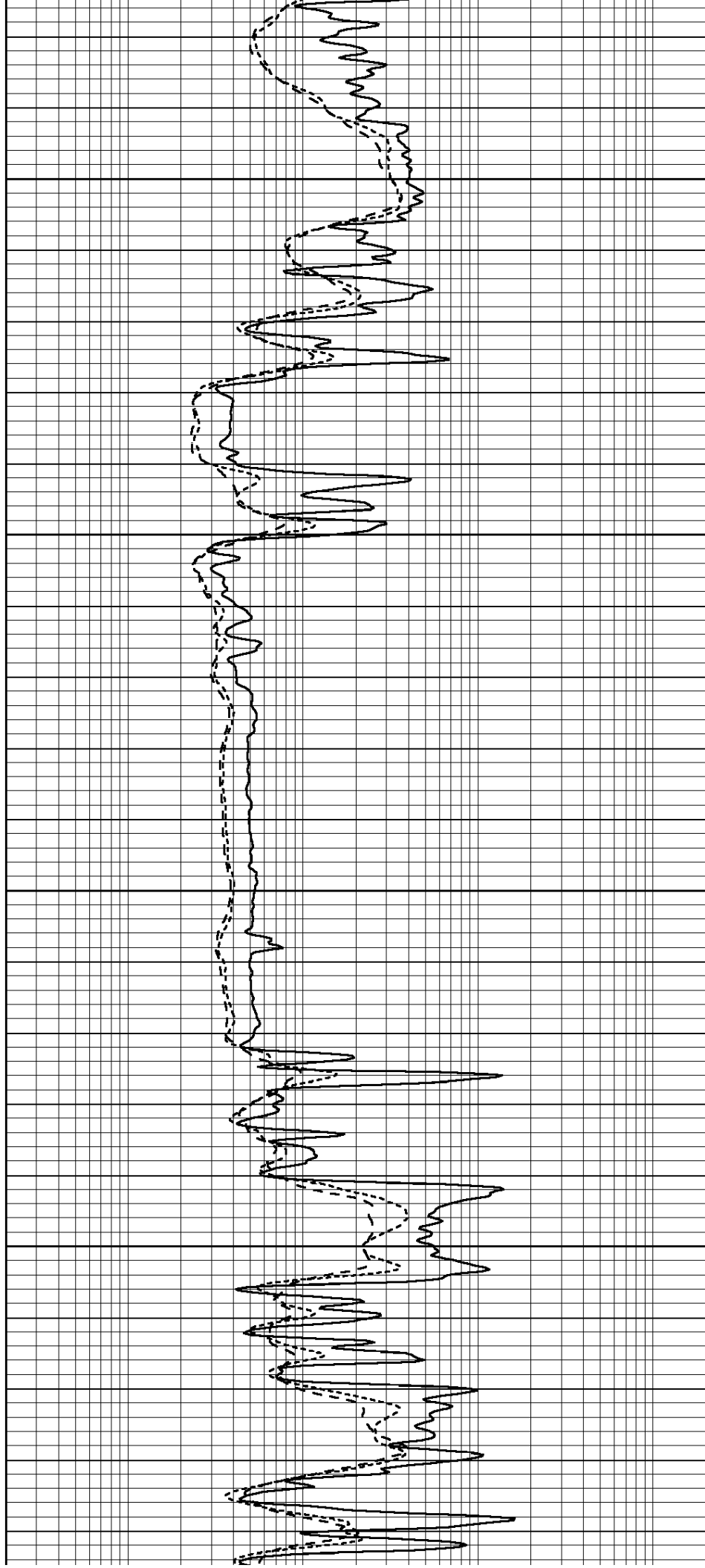


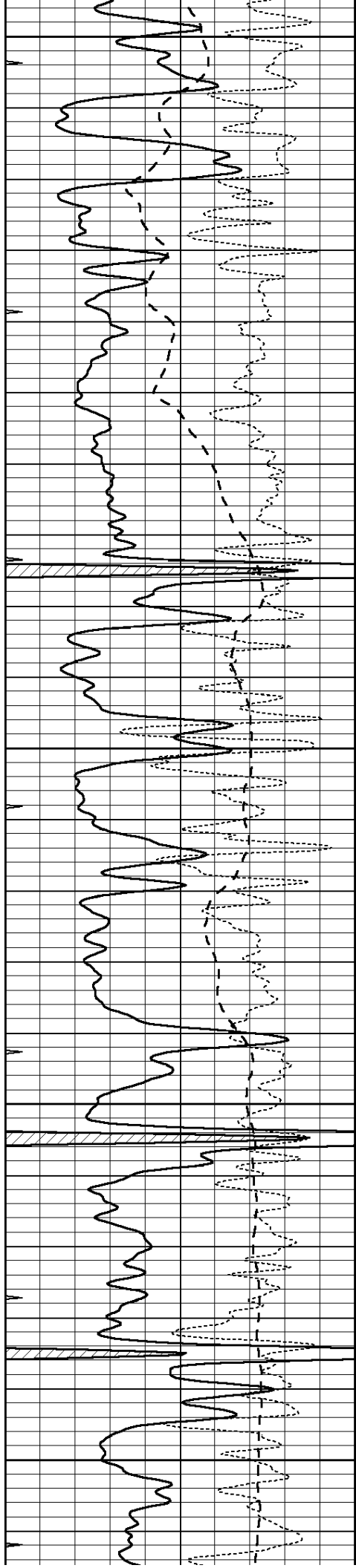
2900

2950

3000

3050





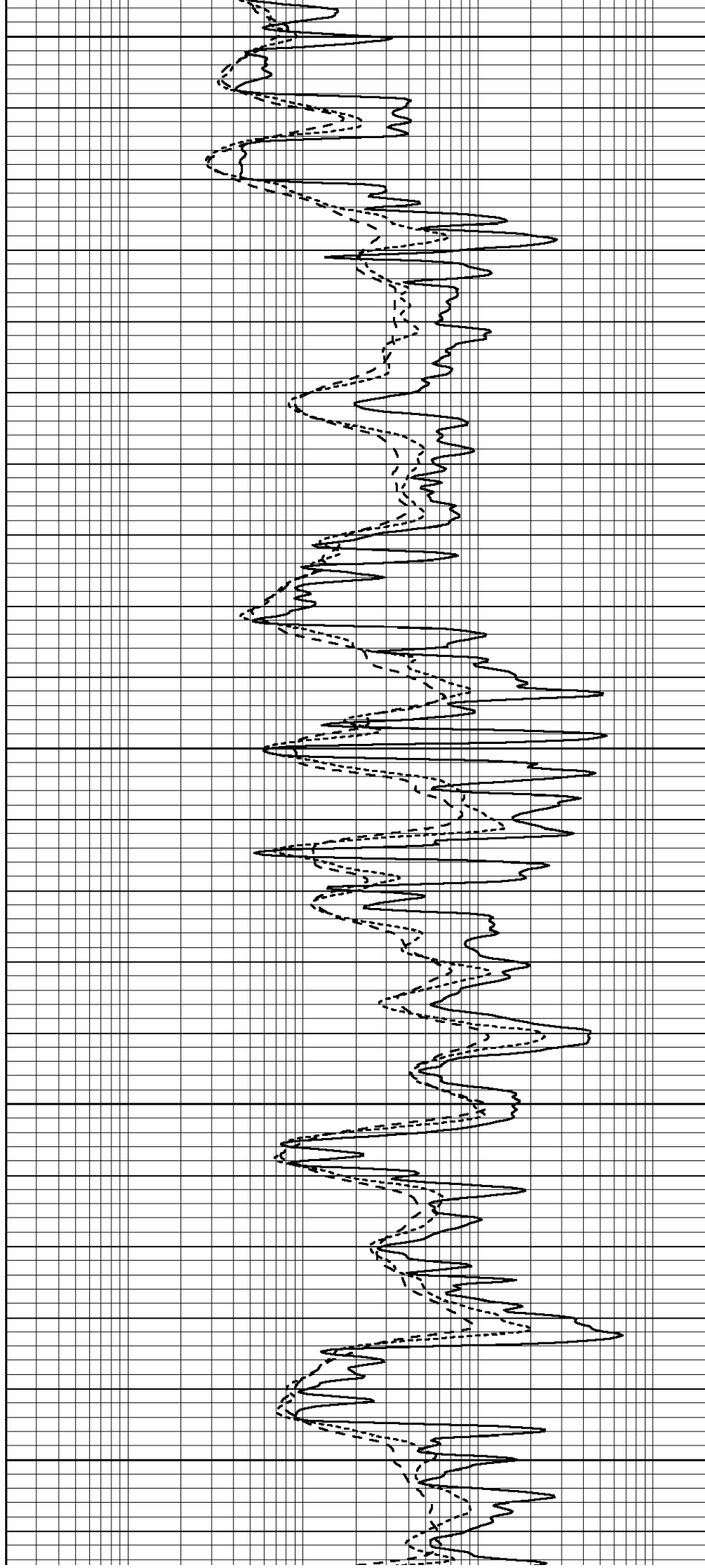
3100

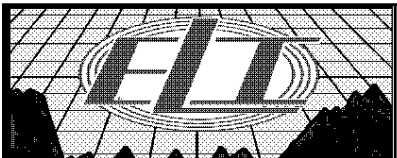
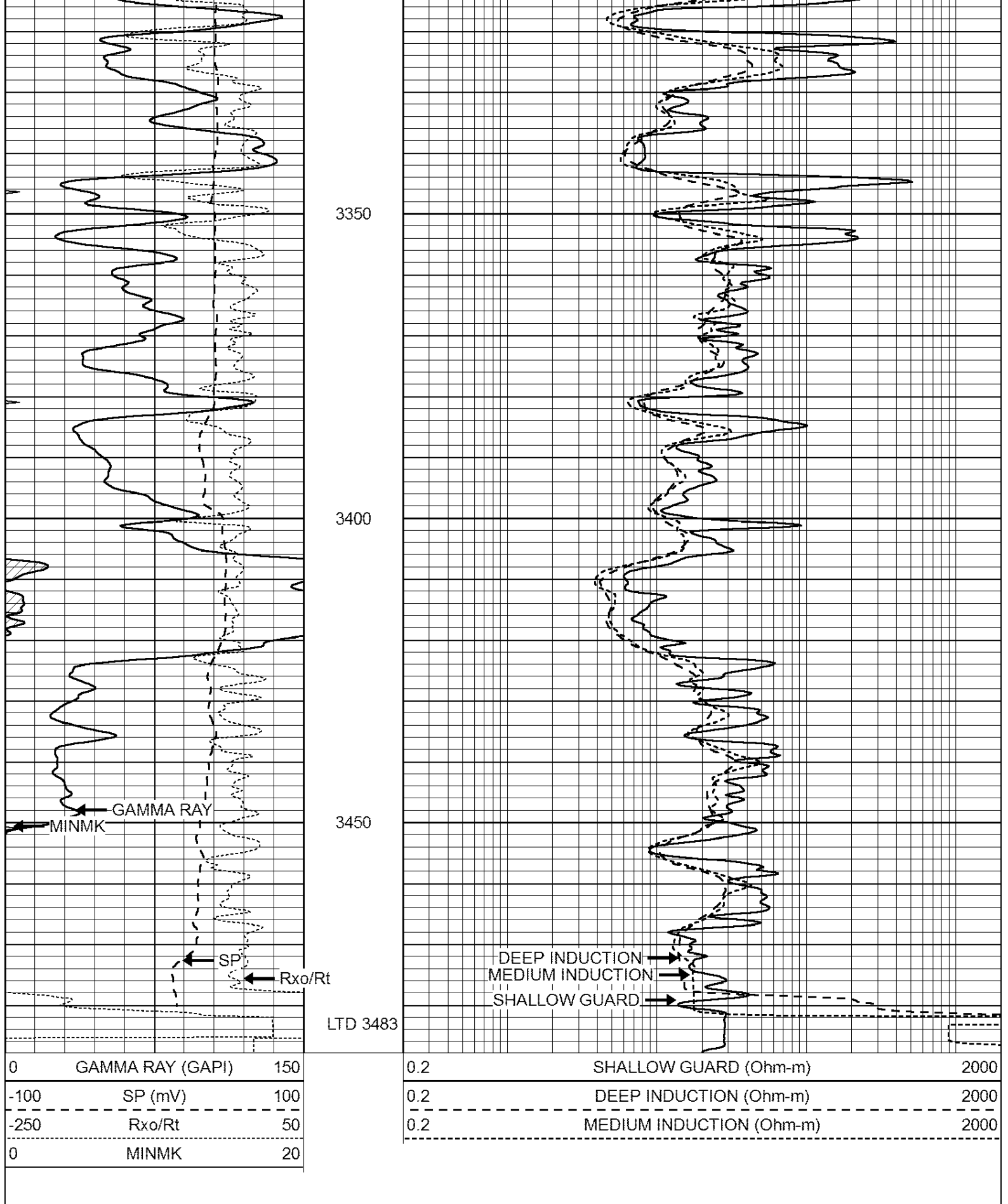
3150

3200

3250

3300



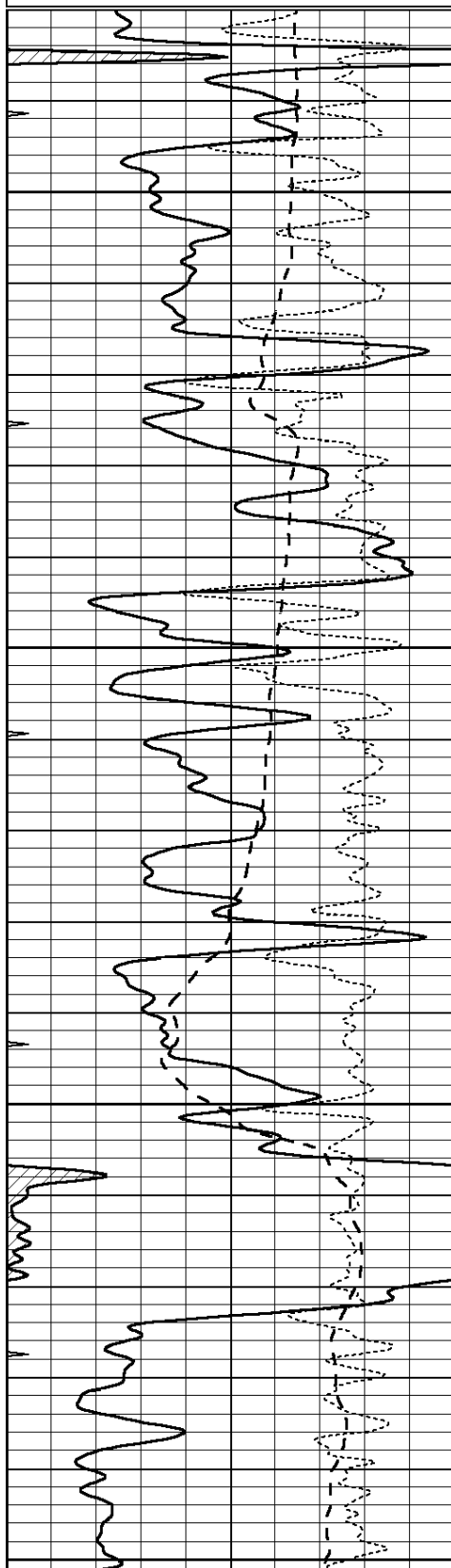


# REPEAT SECTION

Database File: 2422ddn.db  
 Dataset Pathname: pass2.1  
 Presentation Format: \_dil  
 Dataset Creation: Wed May 02 22:14:28 2018  
 Charted by: Depth in Feet scaled 1:240

0	GAMMA RAY (GAPI)	150
-100	SP (mV)	100
-250	Rxo/Rt	50
0	MINMK	20

0.2	SHALLOW GUARD (Ohm-m)	2000
0.2	DEEP INDUCTION (Ohm-m)	2000
0.2	MEDIUM INDUCTION (Ohm-m)	2000

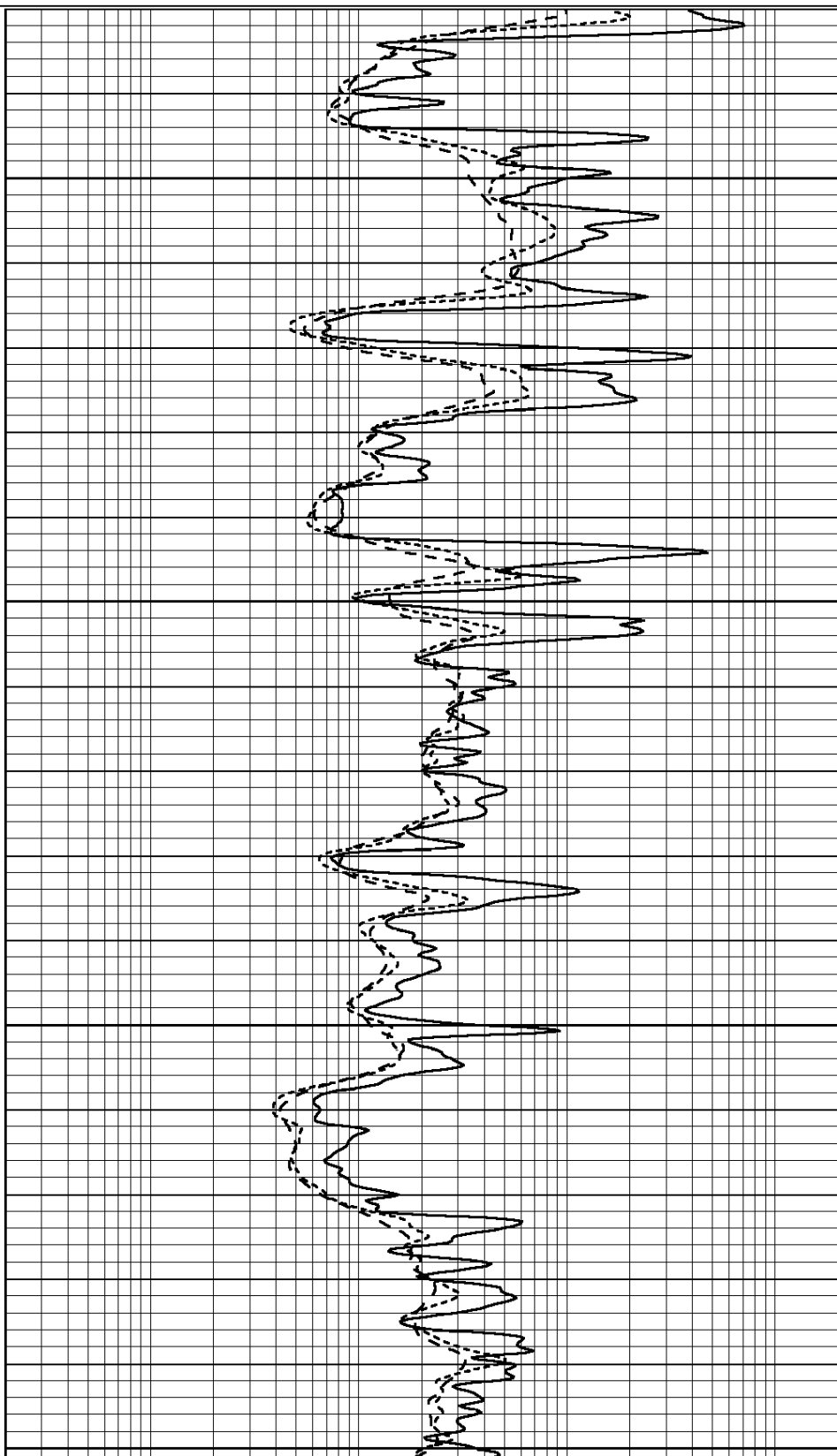


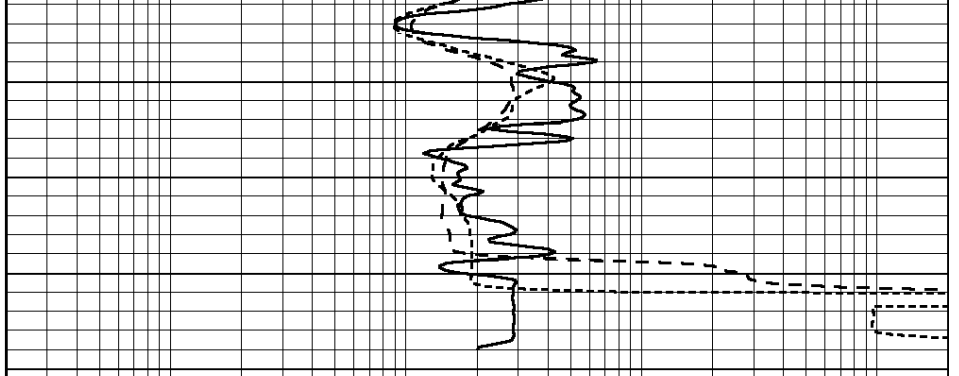
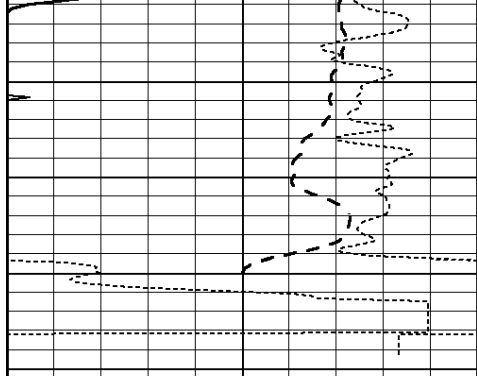
3300

3350

3400

3450





0	GAMMA RAY (GAPI)	150
-100	SP (mV)	100
-250	Rxo/Rt	50
0	MINMK	20

0.2	SHALLOW GUARD (Ohm-m)	2000
0.2	DEEP INDUCTION (Ohm-m)	2000
0.2	MEDIUM INDUCTION (Ohm-m)	2000

### Calibration Report

Database File: pe2.db  
 Dataset Pathname: pass2  
 Dataset Creation: Mon Aug 21 11:58:02 2017 by Log Open-Cased 090629

### Dual Induction Calibration Report

Serial-Model: PROBE8-DILG  
 Surface Cal Performed: Mon Aug 21 11:58:18 2017  
 Downhole Cal Performed: Mon Aug 21 11:58:21 2017  
 After Survey Verification Performed: Mon Aug 21 11:58:23 2017

#### Surface Calibration

Loop:	Readings			References			Results	
	Air	Loop		Air	Loop		m	b
Deep	0.015	0.648	V	0.000	400.000	mmho/m	620.000	0.000
Medium	0.029	0.796	V	0.000	464.000	mmho/m	590.000	-12.000
Internal:	Zero	Cal		Zero	Cal		m	b
Deep	0.017	0.657	V	0.000	400.000	mmho/m	625.153	-10.619
Medium	0.016	0.757	V	0.000	464.000	mmho/m	625.992	-9.739

#### Downhole Calibration

	Readings			References			Results	
	Zero	Cal		Zero	Cal		m'	b'
Deep	0.000	0.000	mmho/m	2.011	405.777	mmho/m	1.000	0.000
Medium	0.000	0.000	mmho/m	7.590	503.393	mmho/m	1.000	0.000
LL3		7.500	V		1500.000	Ohm-m		
		0.000	V		20.000	Ohm-m		
		-7.200	V		3800.000	mmho-m		

#### After Survey Verification

	Readings			Targets			Results	
	Zero	Cal		Zero	Cal		m'	b'
Deep	0.000	0.000	mmho/m	0.000	0.000	mmho/m	0.000	0.000
Medium	0.000	0.000	mmho/m	0.000	0.000	mmho/m	0.000	0.000
LL3		1.000	Ohm-m		1.000	Ohm-m		
		0.000	Ohm-m		0.000	Ohm-m		
		1.000	mmho-m		1.000	mmho-m		

Master Calibration

Performed Mon Aug 21 11:56:41 2017

	Background	Magnesium	Aluminum	Sandstone	
Window 1	833.6	7394.2	2287.3	8111.8	cps
Window 2	768.9	6322.3	1995.6	6800.0	cps
Window 3	621.5	3261.9	1186.4	3380.9	cps
Window 4	184.2	185.7	184.9	184.8	cps
Long Space	0.0	5553.4	1226.6	6031.1	cps
Short Space	1.2	1307.5	903.9	1387.7	cps
Rho		1.7100	2.5900	1.3800	g/cc
Pe		0.0000	2.5700	1.5500	
Rib Angle	: 46.3	Rib Slope	: 1.045	Density/Spine Ratio	: 0.566
Spine Angle	: 76.3	Spine Slope	: 4.090	Spine Intercept	: -20.7

Before Survey Verification

Performed Wed Dec 31 18:00:00 1969

Window 1	0.0	0.0	0.0	0.0	cps
Window 2	0.0	0.0	0.0	0.0	cps
Window 3	0.0	0.0	0.0	0.0	cps
Window 4	0.0	0.0	0.0	0.0	cps
Long Space	0.0	0.0	0.0	0.0	cps
Short Space	0.0	0.0	0.0	0.0	cps
Measured Rho		0.0000	0.0000	0.0000	g/cc
Measured Correction		0.0000	0.0000	0.0000	g/cc
Measured Pe			0.0000	0.0000	

After Survey Verification

Performed Wed Dec 31 18:00:00 1969

Window 1	0.0	0.0	0.0	0.0	cps
Window 2	0.0	0.0	0.0	0.0	cps
Window 3	0.0	0.0	0.0	0.0	cps
Window 4	0.0	0.0	0.0	0.0	cps
Long Space	0.0	0.0	0.0	0.0	cps
Short Space	0.0	0.0	0.0	0.0	cps
Measured Rho		0.0000	0.0000	0.0000	g/cc
Measured Correction		0.0000	0.0000	0.0000	g/cc
Measured Pe			0.0000	0.0000	

Compensated Neutron Calibration Report

Serial Number: 6I  
 Tool Model: G

CALIBRATION

Detector	Readings	Target	Normalization
Short Space	1.00 cps	1.00 cps	1.0000
Long Space	1.00 cps	1.00 cps	1.0000

PRE-SURVEY VERIFICATION

Detector	Readings	Measured	Target
1) Short Space	cps		
Long Space	cps	pu	pu

2)	Short Space Long Space	cps cps	pu
3)	Short Space Long Space	cps cps	pu

POST-SURVEY VERIFICATION

	Detector	Readings	Measured	Target
1)	Short Space Long Space	cps cps	pu	pu
2)	Short Space Long Space	cps cps	pu	pu
3)	Short Space Long Space	cps cps	pu	pu

Gamma Ray Calibration Report

Serial Number:	GR6	
Tool Model:	OPEN	
Performed:	Mon Aug 21 11:59:01 2017	
Calibrator Value:	150.0	GAPI
Background Reading:	0.0	cps
Calibrator Reading:	276.0	cps
Sensitivity:	0.5500	GAPI/cps