



# MICRO LOG

Company MAI OIL  
 Well URBANEK #2  
 Field PROGRESS  
 County ELLSWORTH State KANSAS

Location: API # : 15-053-21360-00-00  
 NW-SE-NE-SE  
 1775 FSL & 544 FEL  
 SEC 15 TWP 16S RGE 10W  
 Permanent Datum GROUND LEVEL Elevation 1894'  
 Log Measured From KELLY BUSHING 8' A.G.L.  
 Drilling Measured From KELLY BUSHING  
 Other Services  
 CDL/CNL/DIL  
 Elevation  
 K.B. 1902  
 D.F. 1900  
 G.L. 1894

Date	05/02/18
Run Number	TWO
Depth Driller	3480
Depth Logger	3483
Bottom Logged Interval	3481
Top Log Interval	2800
Casing Driller	8 5/8@ 428
Casing Logger	428
Bit Size	7 7/8"
Type Fluid in Hole	CHEMICAL MUD
Density / Viscosity	9.4/48
pH / Fluid Loss	9.0/9.6
Source of Sample	FLOWLINE
Rm @ Meas. Temp	.80@70
Rmt @ Meas. Temp	.60@70
Rmc @ Meas. Temp	.96@70
Source of Rmf / Rmc	MEASURED
Rm @ BHT	.50@111
Time Circulation Stopped	2 HOURS
Time Logger on Bottom	///
Maximum Recorded Temperature	115F
Equipment Number	4010
Location	HAYS, KANSAS
Recorded By	GUS PFANENSTIEL
Witnessed By	WYATT URBAN

<<< Fold Here >>>

All interpretations are opinions based on inferences from electrical or other measurements and we cannot and do not guarantee the accuracy or correctness of any interpretation, and we shall not, except in the case of gross or willful negligence on our part, be liable or responsible for any loss, costs, damages, or expenses incurred or sustained by anyone resulting from any interpretation made by any of our officers, agents or employees. These interpretations are also subject to our general terms and conditions set out in our current Price Schedule.

### Comments

THANK YOU FOR USING ELI WIRELINE, HAYS, KS. (785) 628-6395

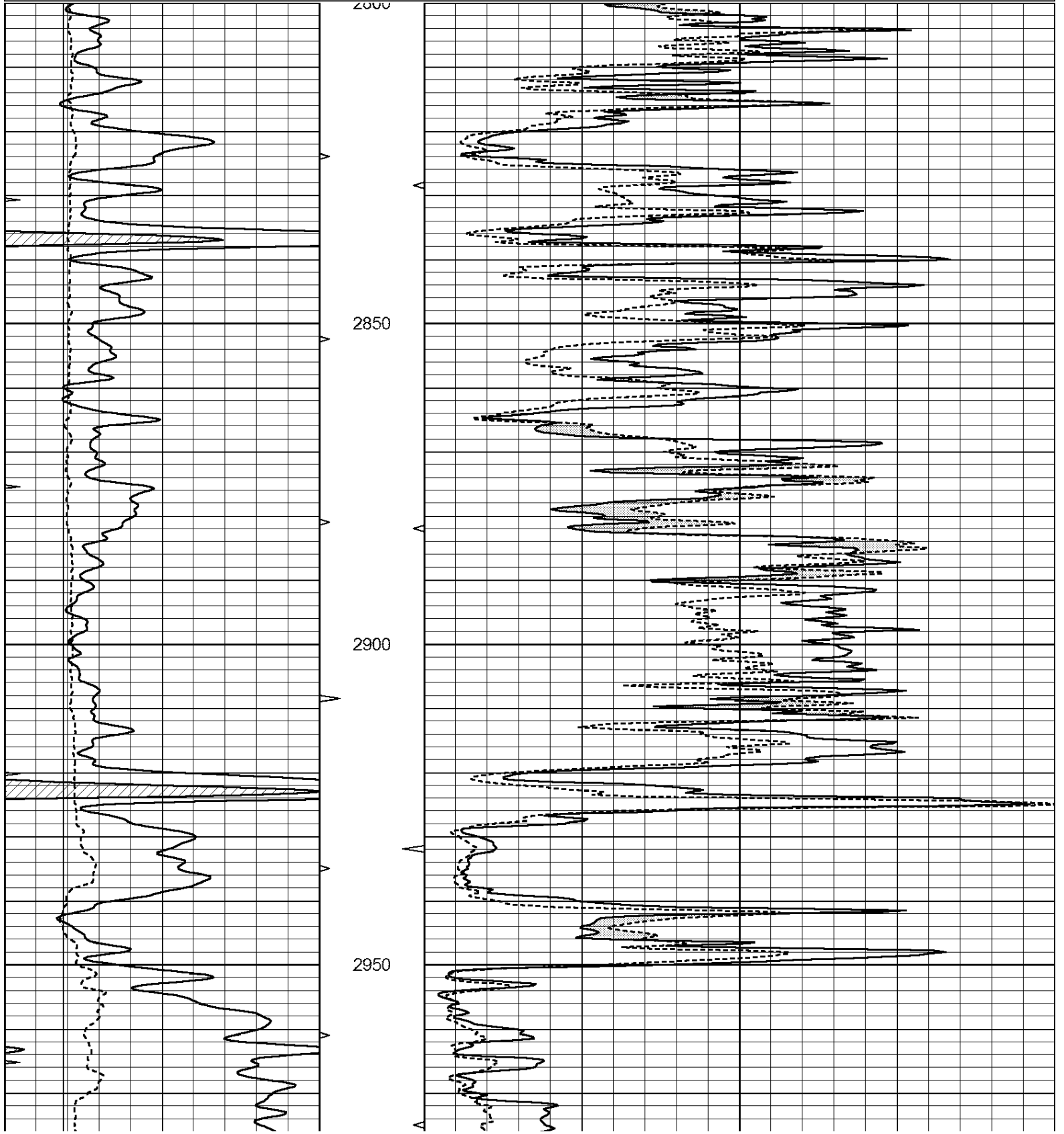
DIRECTIONS  
 HOLYROOD TO 6 RD. NORTH 4.5 MILES  
 WEST INTO

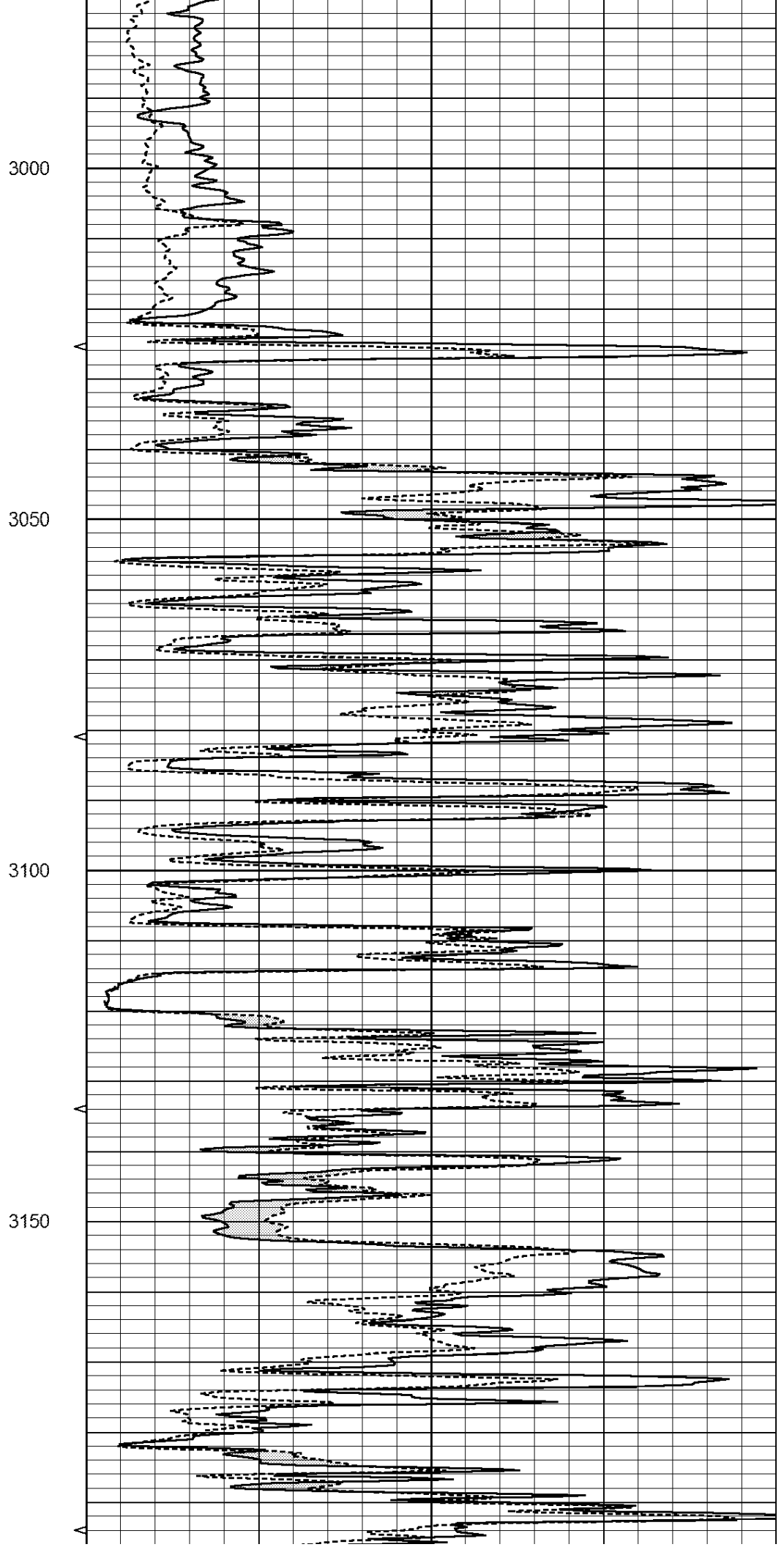
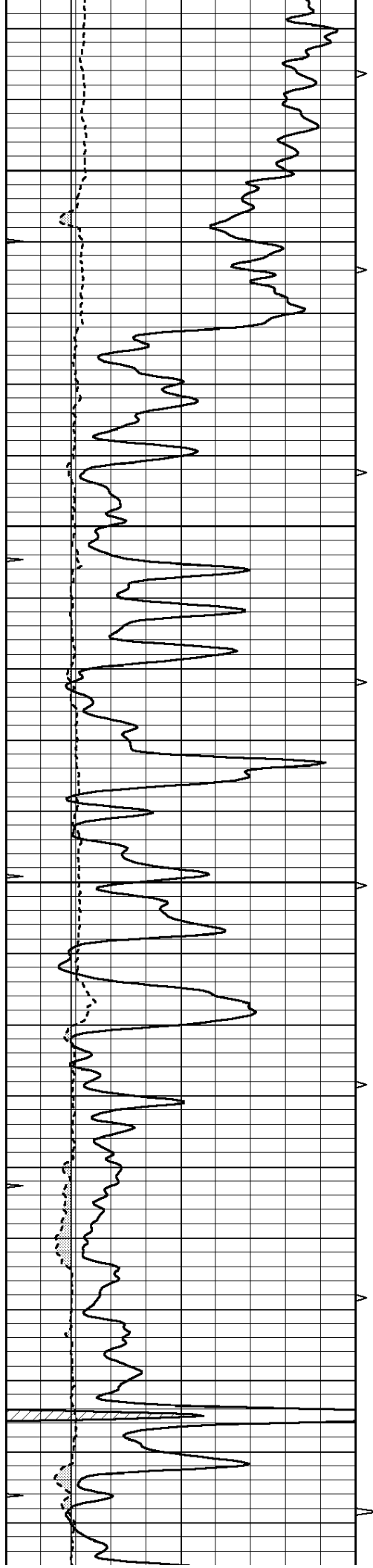


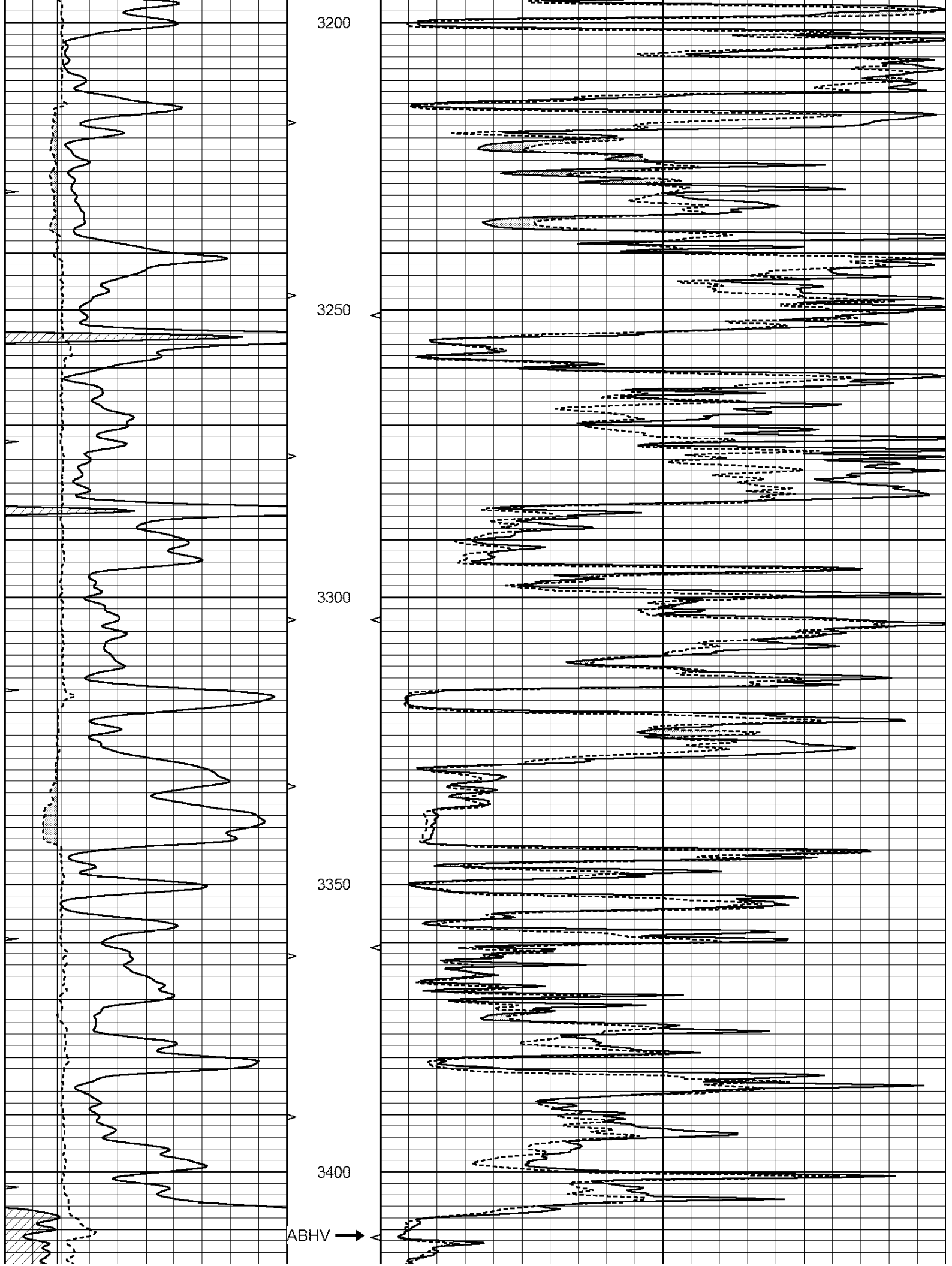
# MAIN PASS

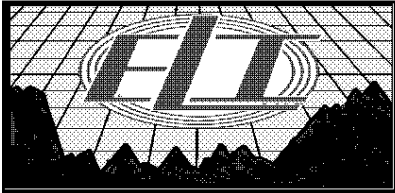
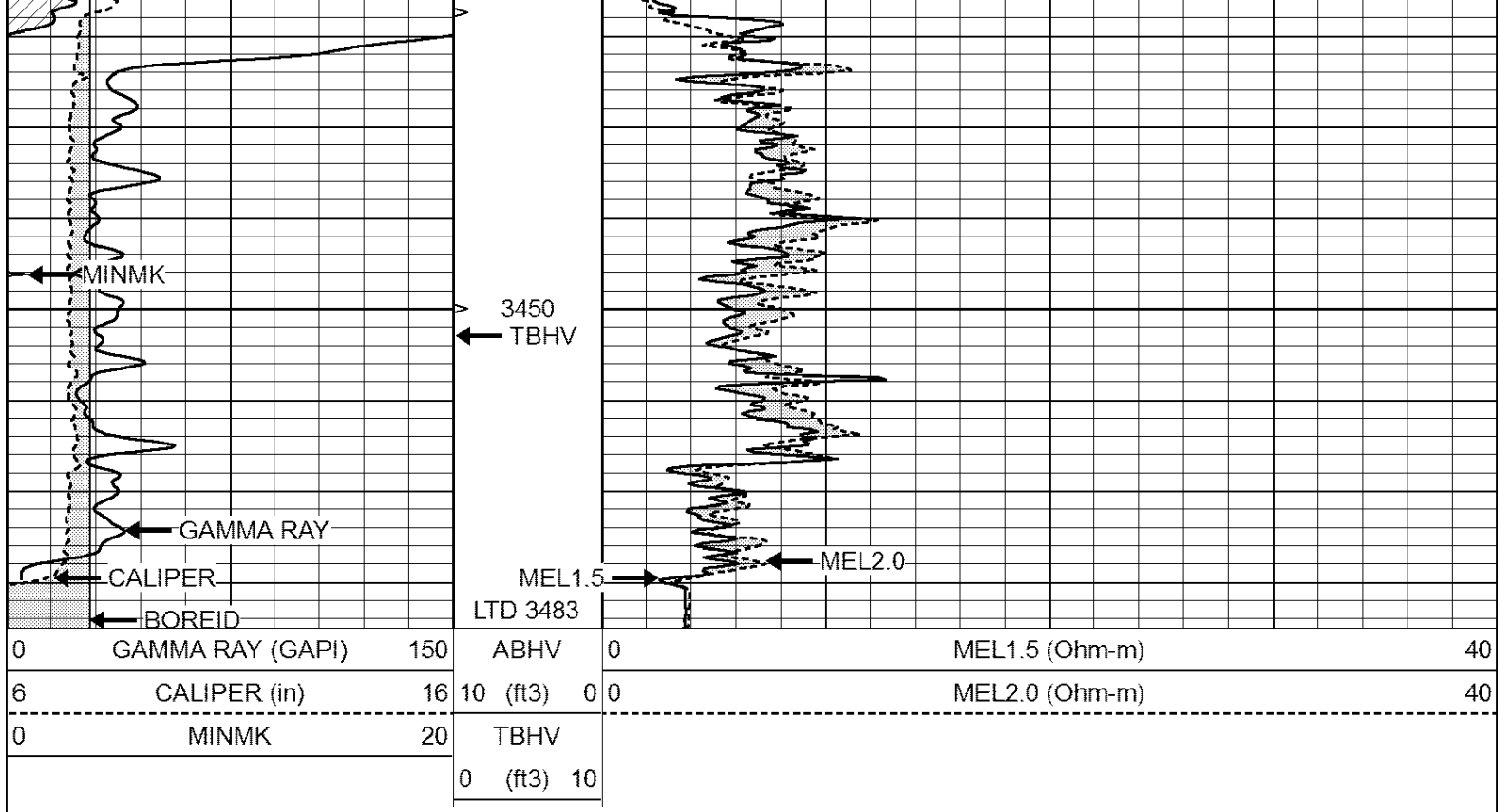
Database File: 2422ddn.db  
 Dataset Pathname: pass5.1  
 Presentation Format: \_micro  
 Dataset Creation: Wed May 02 23:40:17 2018 by Calc Open-Cased 090629  
 Charted by: Depth in Feet scaled 1:240

0	GAMMA RAY (GAPI)	150	ABHV	0	MEL1.5 (Ohm-m)	40
6	CALIPER (in)	16	10 (ft3)	0	MEL2.0 (Ohm-m)	40
0	MINMK	20	TBHV			
			0 (ft3)	10		





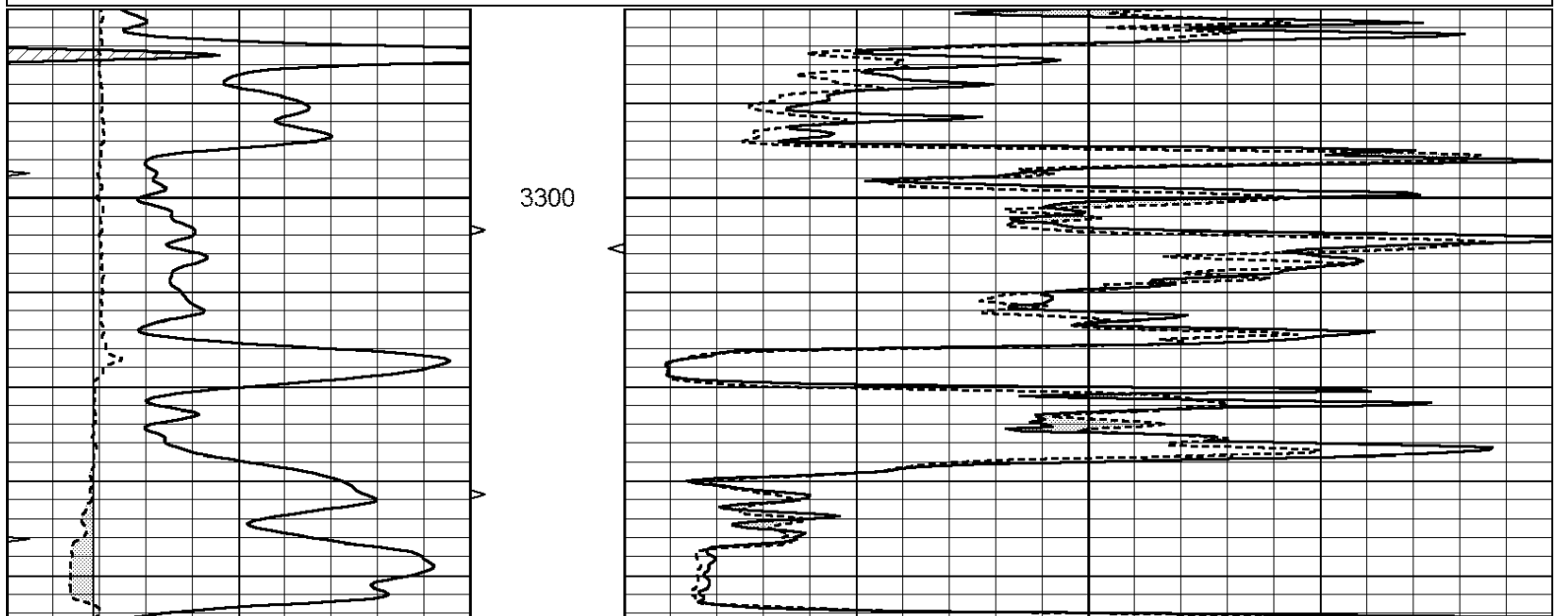


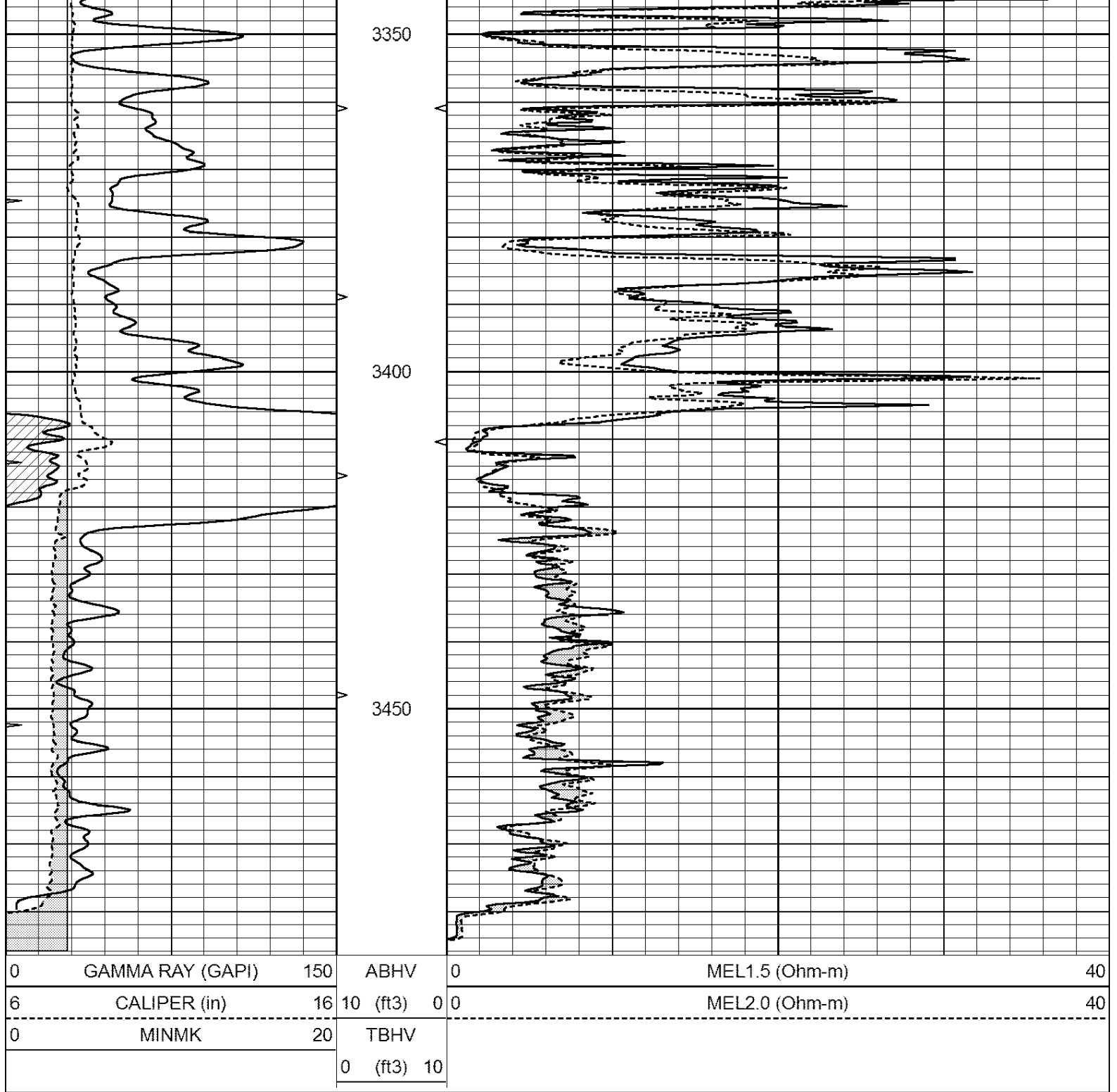


# REPEAT SECTION

Database File: 2422ddn.db  
 Dataset Pathname: pass4.1  
 Presentation Format: \_micro  
 Dataset Creation: Wed May 02 23:43:32 2018  
 Charted by: Depth in Feet scaled 1:240

0	GAMMA RAY (GAPI)	150	ABHV	0	MEL1.5 (Ohm-m)	40
6	CALIPER (in)	16	10 (ft3)	0	MEL2.0 (Ohm-m)	40
0	MINMK	20	TBHV			
			0 (ft3)	10		





Calibration Report

Database File: 2422ddn.db  
 Dataset Pathname: pass4.1  
 Dataset Creation: Wed May 02 23:43:32 2018

MICRO Calibration Report

Serial Number: MICRO6  
 Tool Model: PROBE  
 Performed: Wed Feb 07 06:59:26 2018

Caliper Calibration:	Gain=26.421	Offset=0.433
References	Low Cal 7.000	High Cal 14.000
Readings	0.217	0.478

1.5" Calibration:	Gain=30.075	Offset=-0.400
References	Low Cal 0.000	High Cal 20.000
Readings	0.004	1.196
2" Calibration:	Gain=45.000	Offset=-1.000
References	Low Cal 0.000	High Cal 20.000
Readings	0.006	0.913
Gamma Ray Calibration Report		
Serial Number:	GR2	
Tool Model:	OPEN	
Performed:	Wed Mar 14 06:10:12 2018	
Calibrator Value:	1.0	GAPI
Background Reading:	0.0	cps
Calibrator Reading:	1.0	cps
Sensitivity:	0.9000	GAPI/cps