



SONIC LOG

Company LARIO OIL & GAS COMPANY  
Well LANG A #1-12  
Field LANGWICH  
County WICHITA State KANSAS

Location: API #: 15-203-20330-00-00  
660' FSL & 4620' FEL  
SEC 12 TWP 20S RGE 35W  
Permanent Datum GROUND LEVEL Elevation 3127  
Log Measured From KELLY BUSHING 11' A.G.L.  
Drilling Measured From KELLY BUSHING  
Other Services CDL/CNL/DIL MEL  
Elevation K.B. 3138  
D.F. 3136  
G.L. 3127

Date	4/15/18
Run Number	TWO
Depth Driller	5050
Depth Logger	5051
Bottom Logged Interval	5045
Top Log Interval	50
Casing Driller	8 5/8" @ 351
Casing Logger	351
Bit Size	7 7/8
Type Fluid in Hole	CHEMICAL MUD
Density / Viscosity	9.2/58
PH / Fluid Loss	10.0/8.8
Source of Sample	FLOWLINE
Rm @ Meas. Temp	1.8 @ 62F
Rmt @ Meas. Temp	1.35 @ 62F
Rmc @ Meas. Temp	2.16 @ 62F
Source of Rmf / Rmc	MEASUREMENT
Rm @ BHT	.88 @ 126F
Time Circulation Stopped	2 HOURS
Time Logger on Bottom	////
Maximum Recorded Temperature	126F
Equipment Number	3802
Location	HAYS, KANSAS
Recorded By	GUS PFANENSTIEL
Witnessed By	TIM LAUER

<<< Fold Here >>>

All interpretations are opinions based on inferences from electrical or other measurements and we cannot and do not guarantee the accuracy or correctness of any interpretation, and we shall not, except in the case of gross or willful negligence on our part, be liable or responsible for any loss, costs, damages, or expenses incurred or sustained by anyone resulting from any interpretation made by any of our officers, agents or employees. These interpretations are also subject to our general terms and conditions set out in our current Price Schedule.

Comments

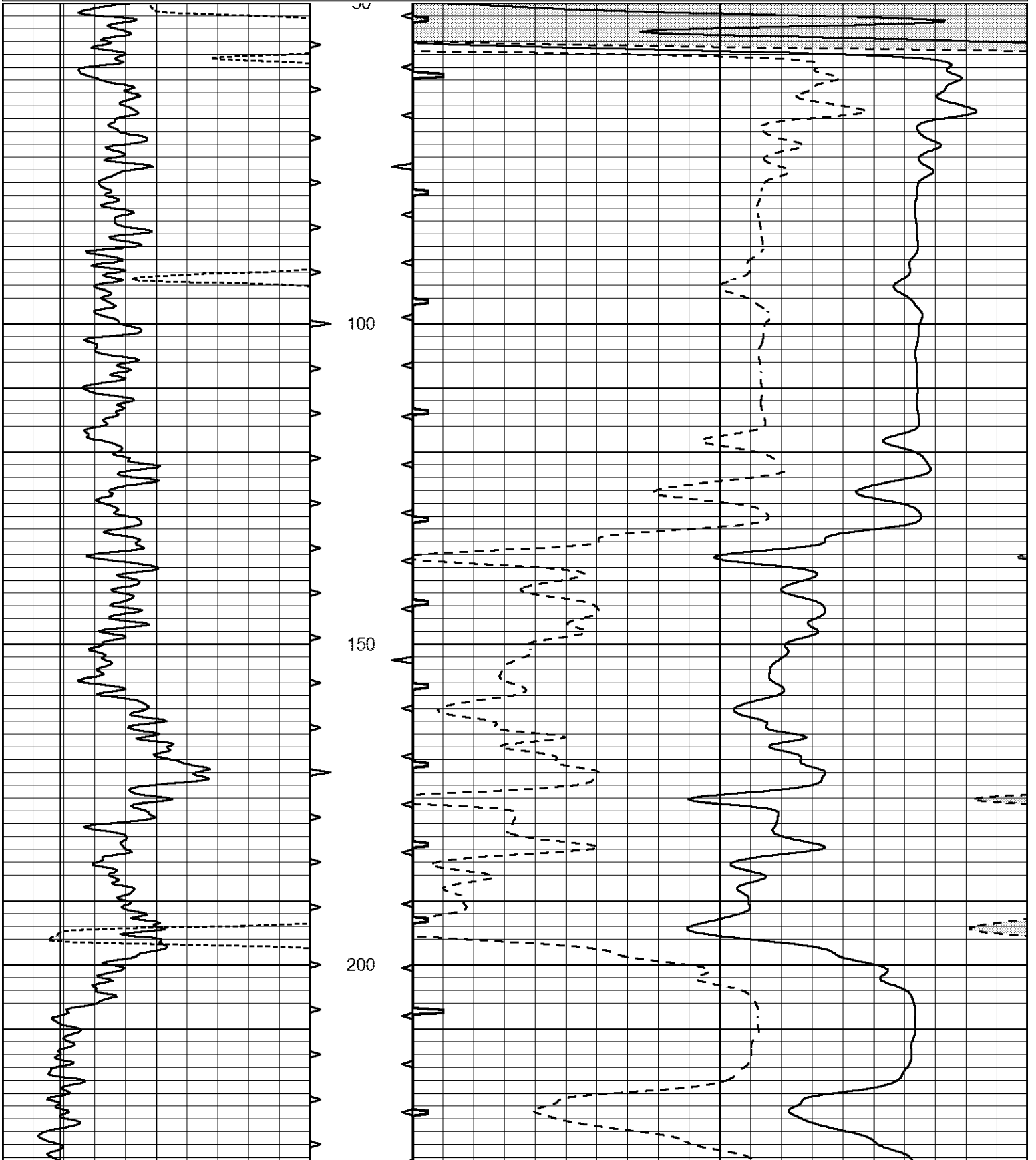
THANK YOU FOR USING ELI WIRELINE SERVICES, HAYS, KS. ( 785 ) 628-6395  
DIRECTIONS  
WEST OF SCOTT CITY TO COUNTY LINE 11 SOUTH,  
1 WEST, NORTH INTO.

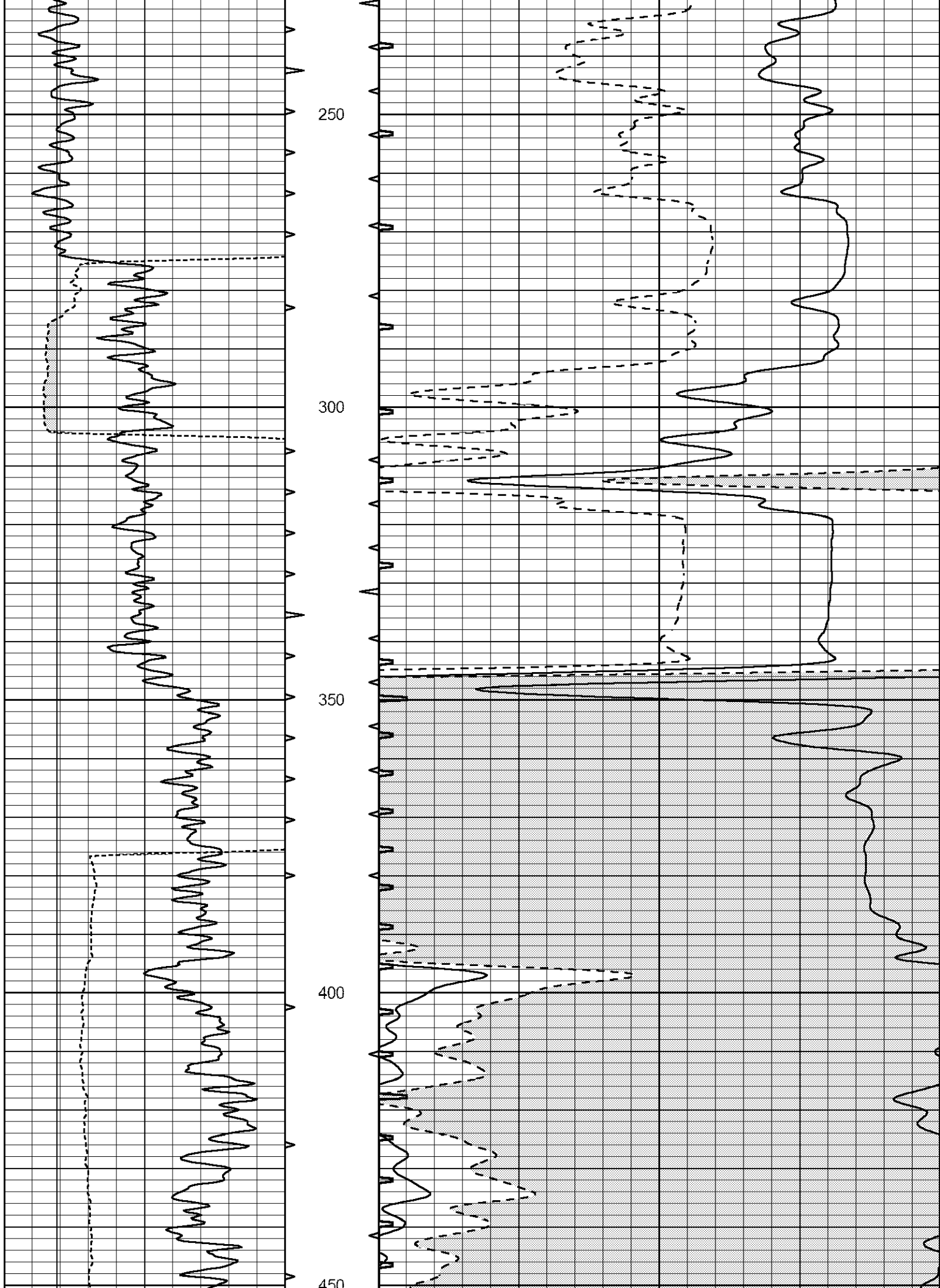


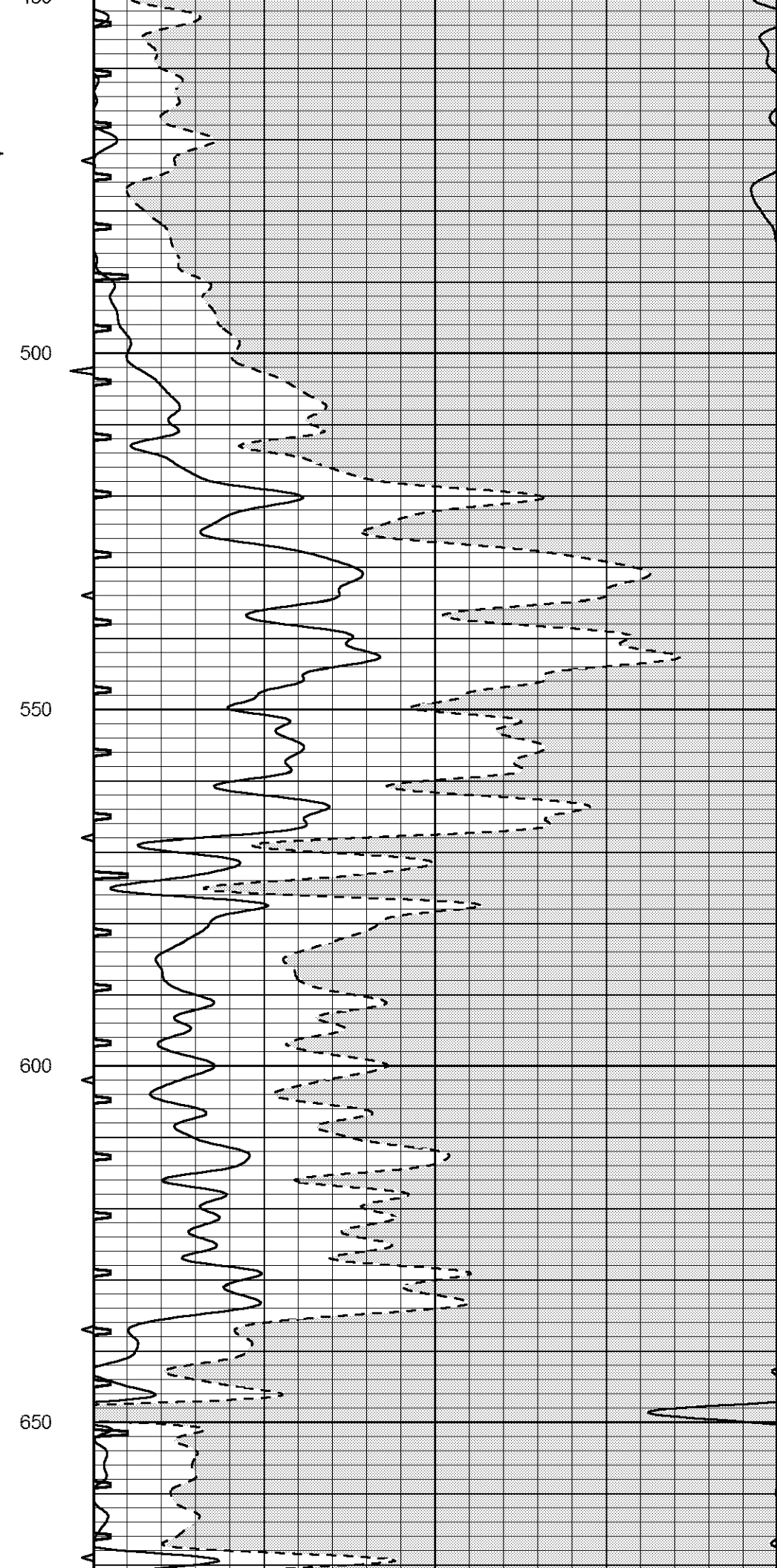
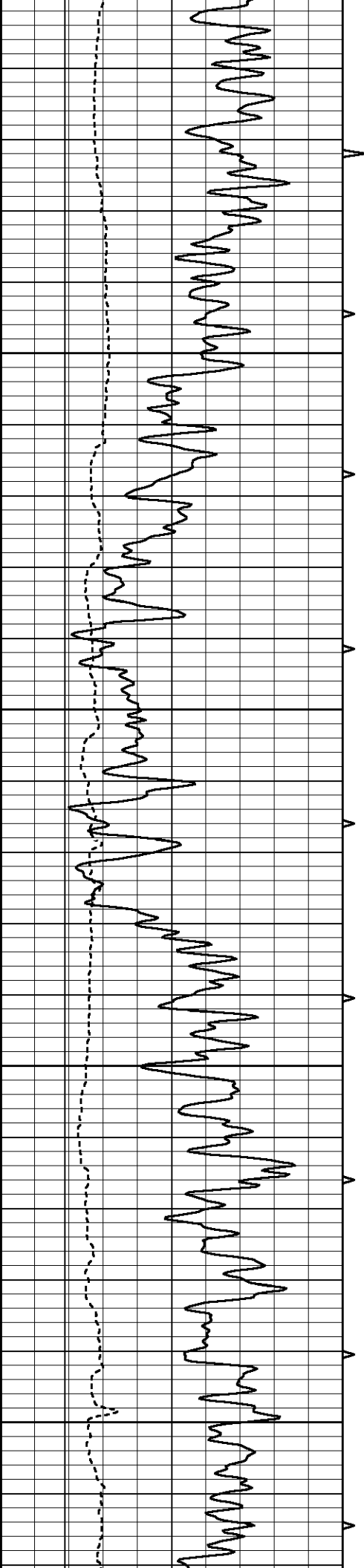
MAIN PASS

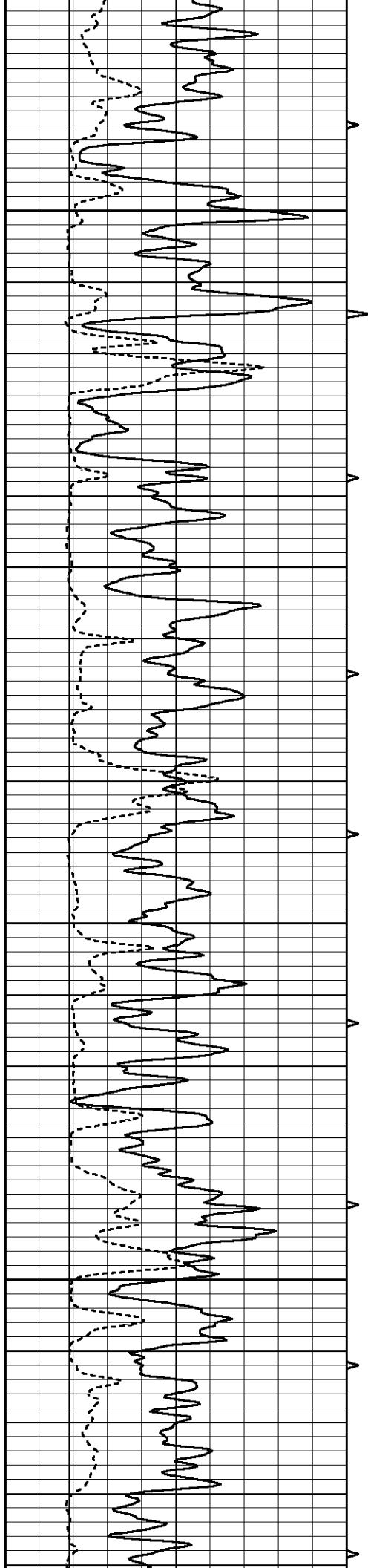
Database File 2042pe.db  
 Dataset Pathname pass8MAIN  
 Presentation Format \_slt  
 Dataset Creation Mon Apr 16 02:59:37 2018  
 Charted by Depth in Feet scaled 1:240

0	GAMMA RAY (GAPI)	150	ABHV	140	DELTA TIME (usec/ft)	40	
6	CALIPER (in)	16	10 (ft3)	0	30	SONIC POROSITY (pu)	-10
			TBHV	0	ITT (msec)	20	
			0 (ft3)	10			







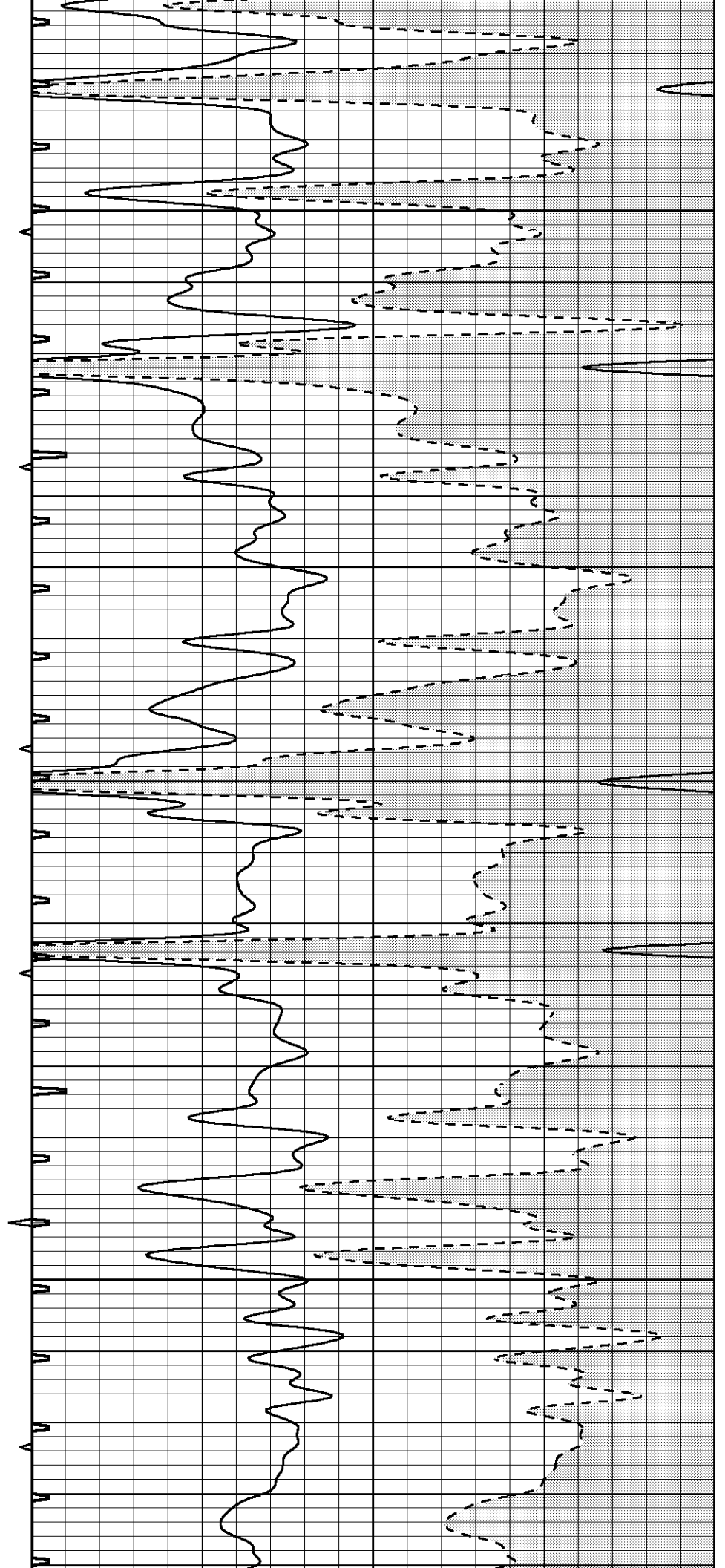


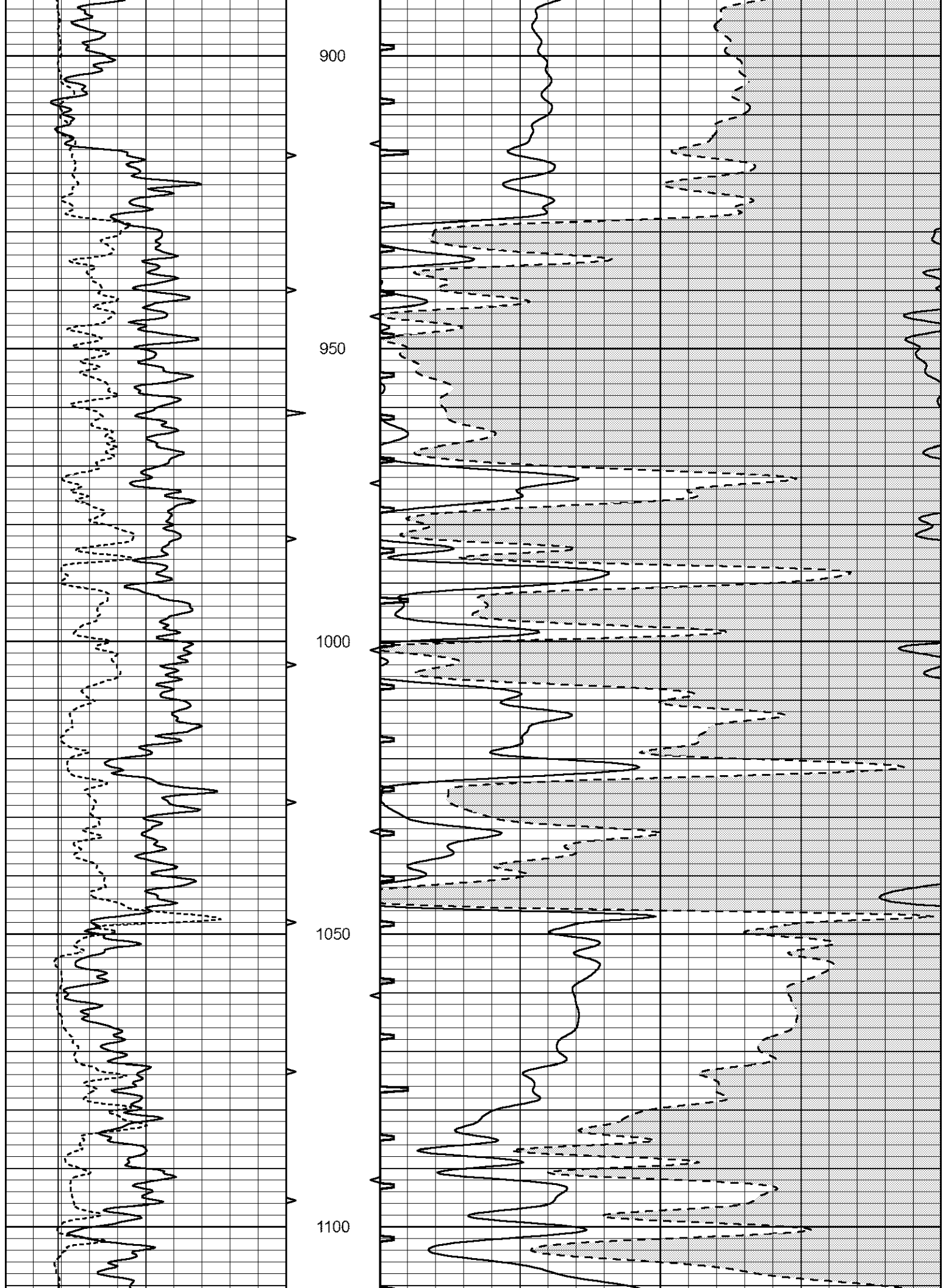
700

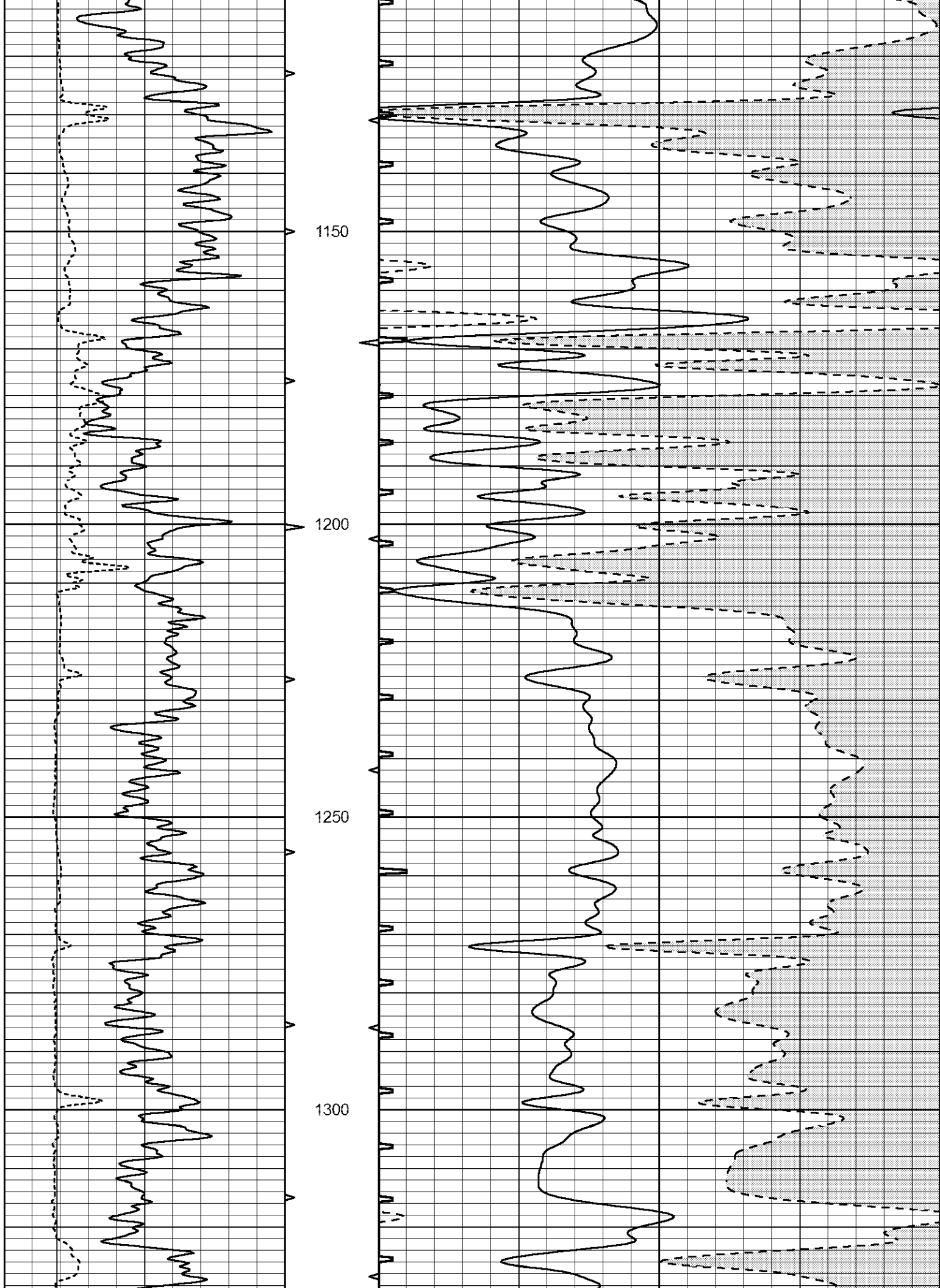
750

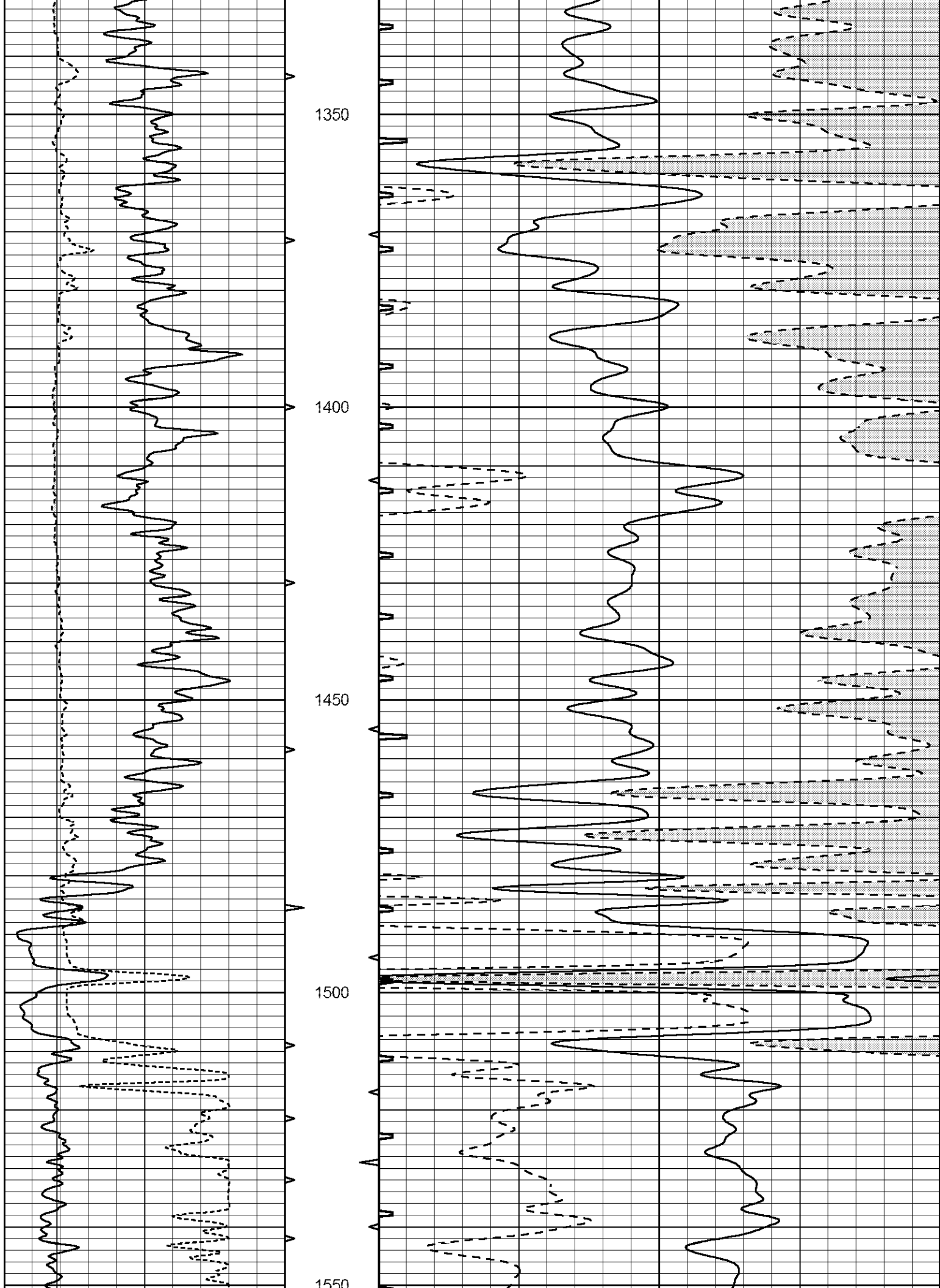
800

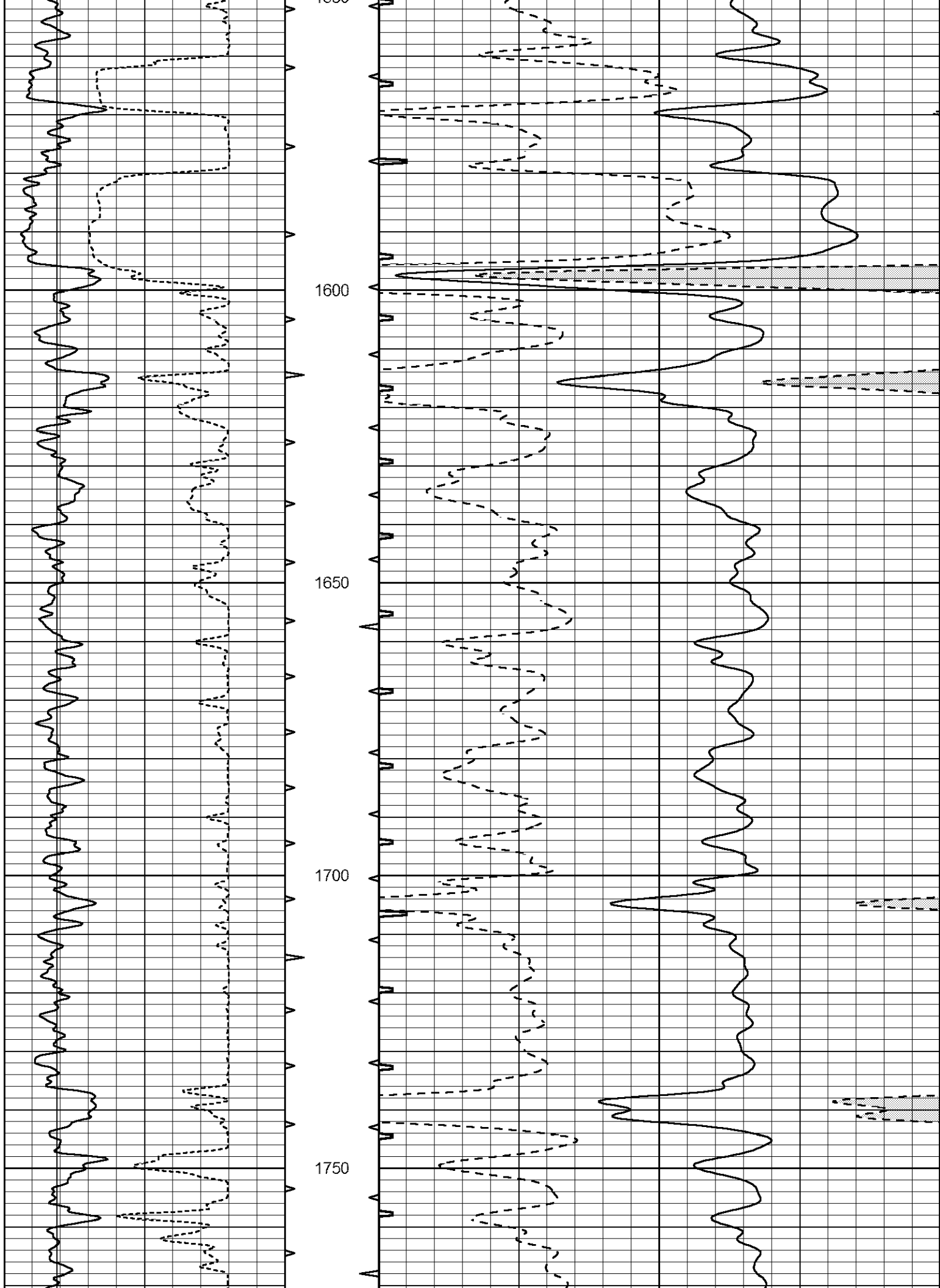
850

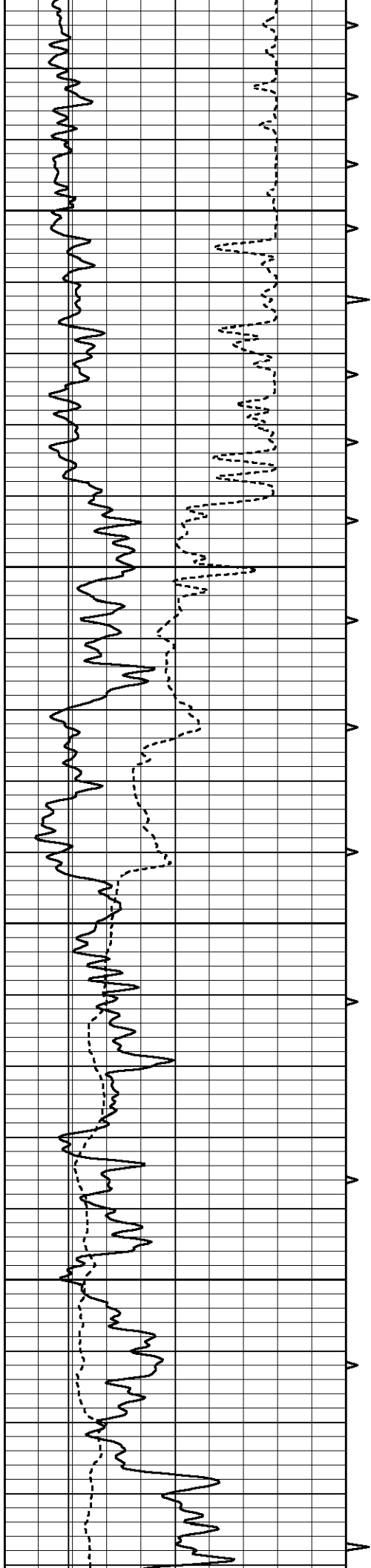










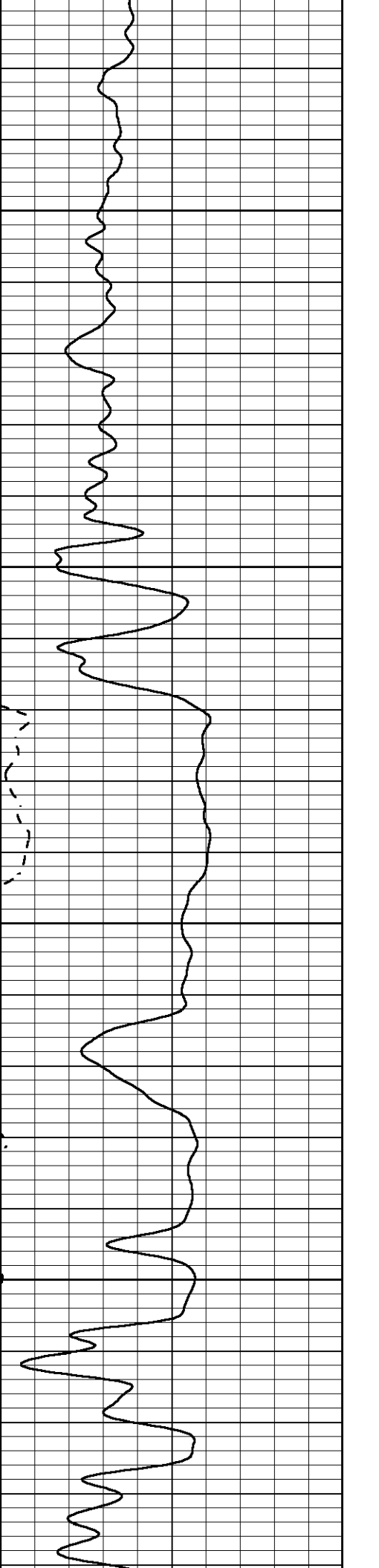
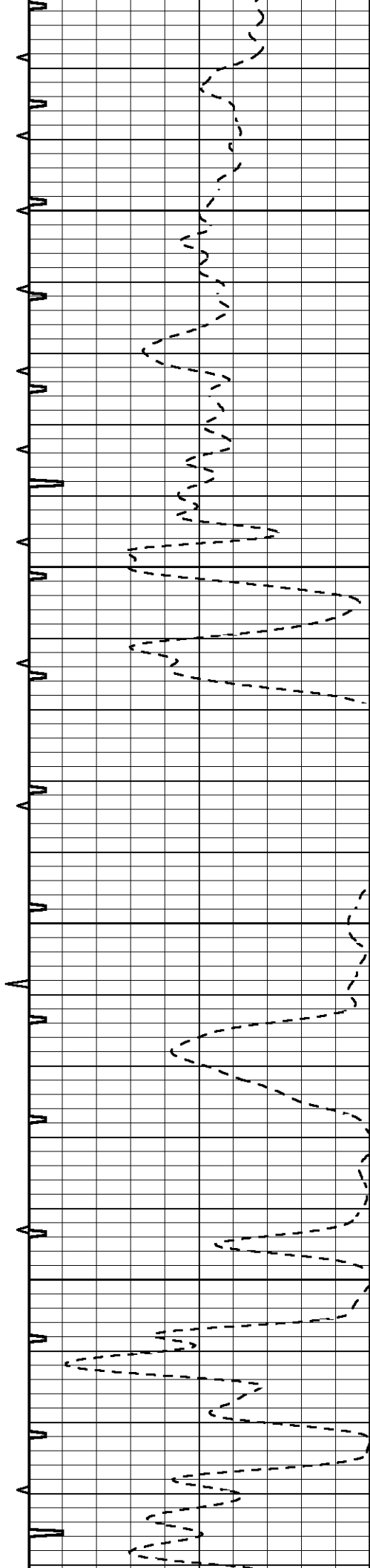


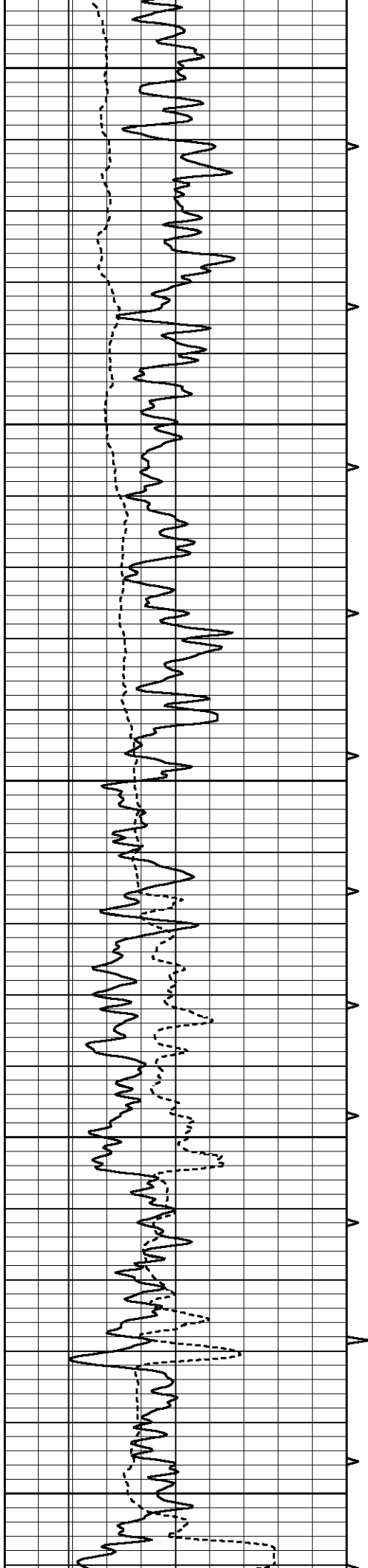
1800

1850

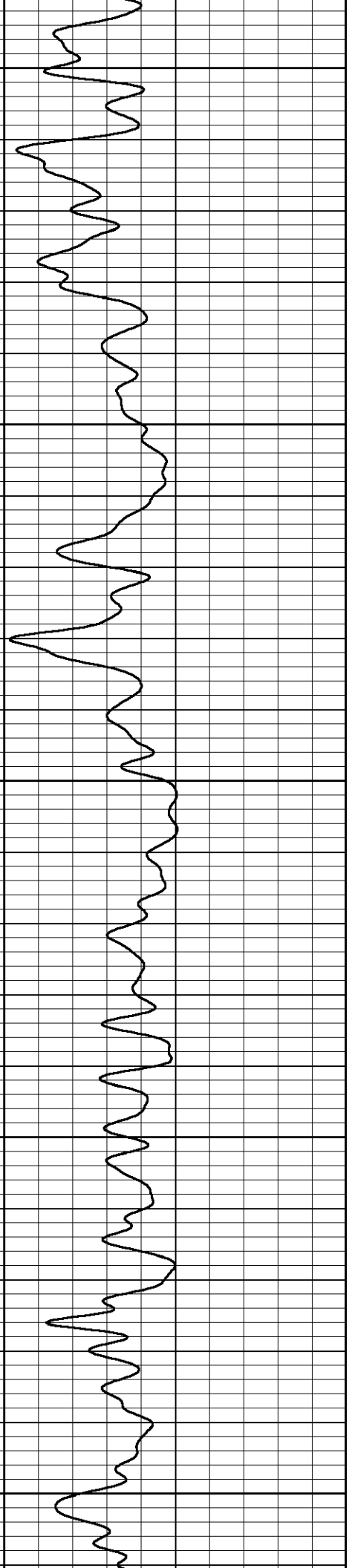
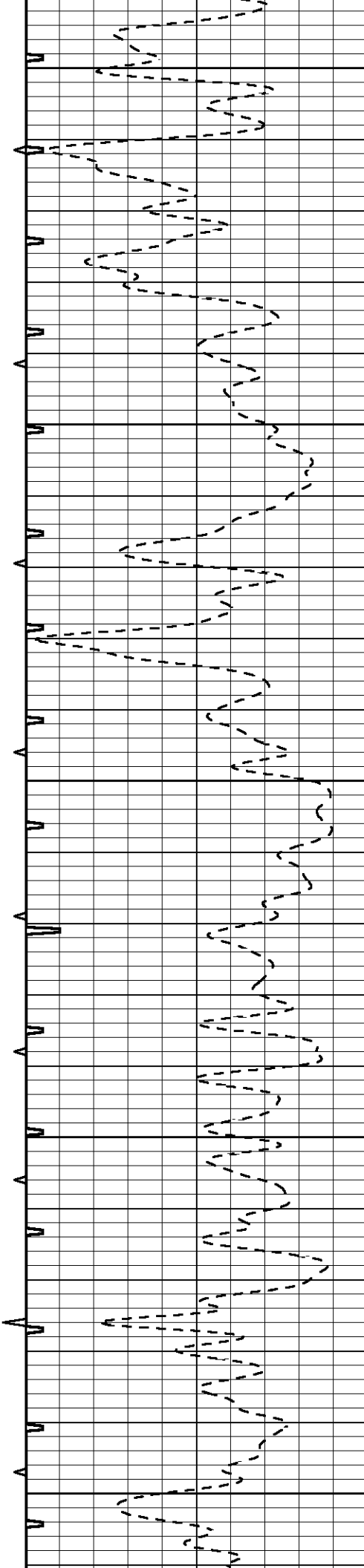
1900

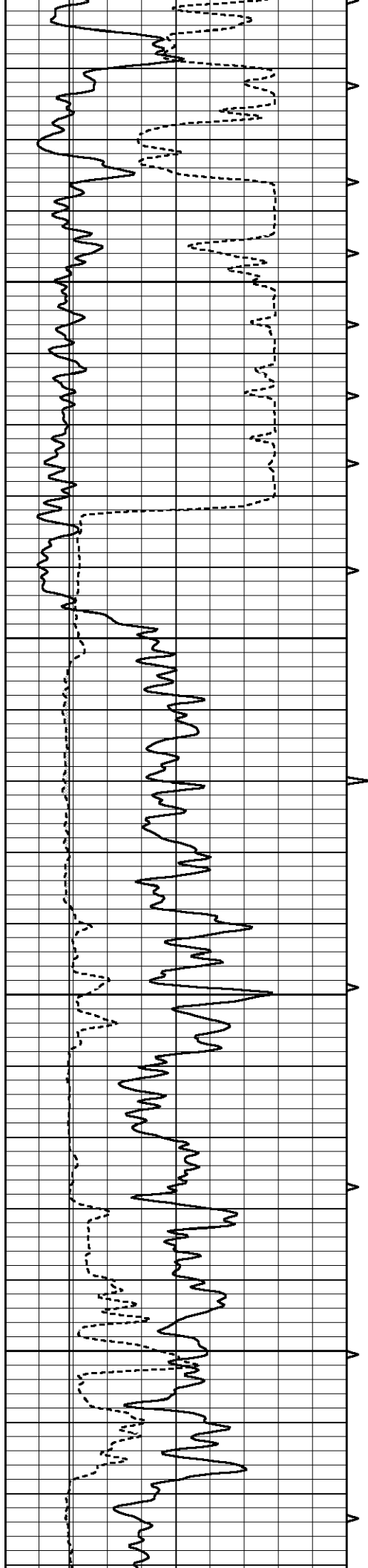
1950





2000  
2050  
2100  
2150  
2200



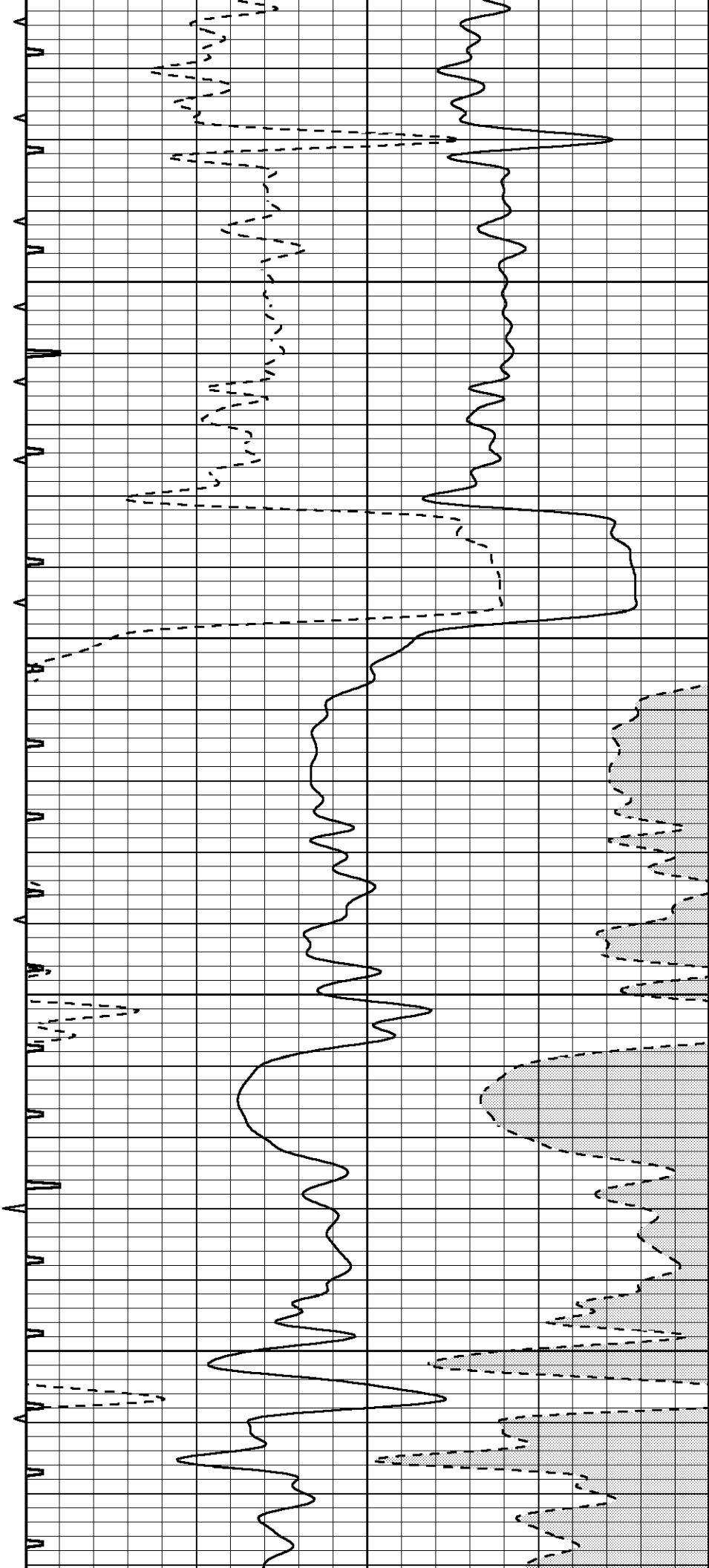


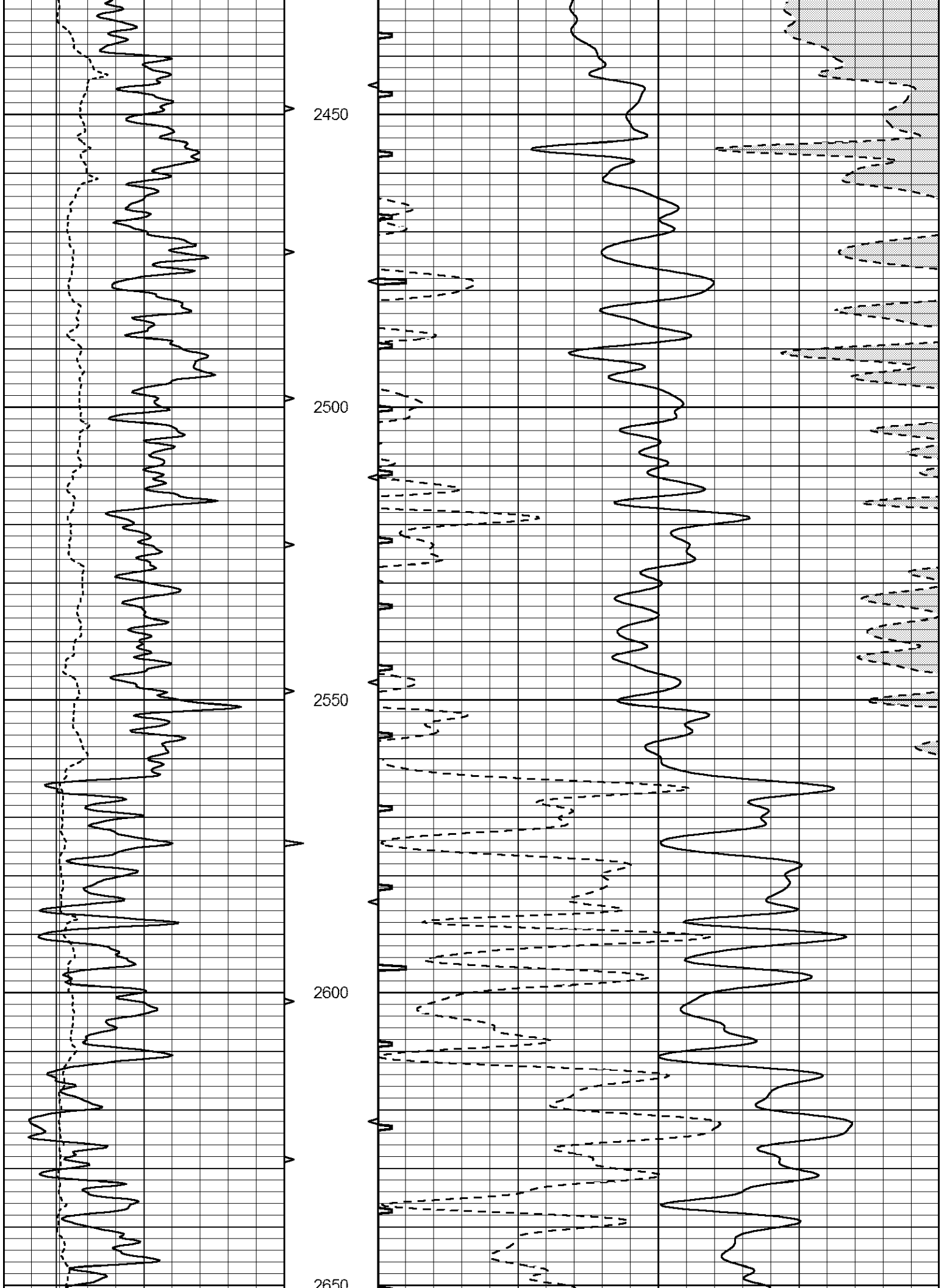
2250

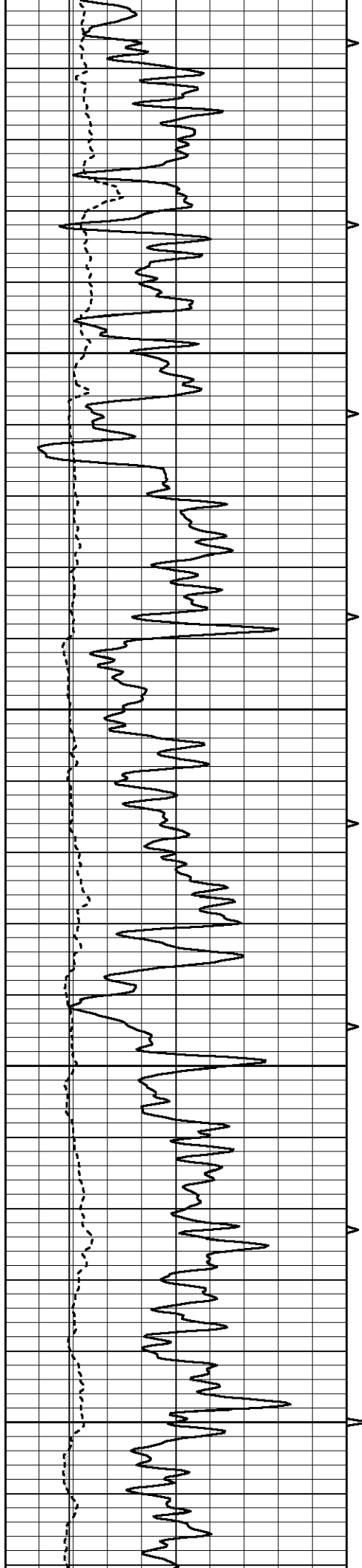
2300

2350

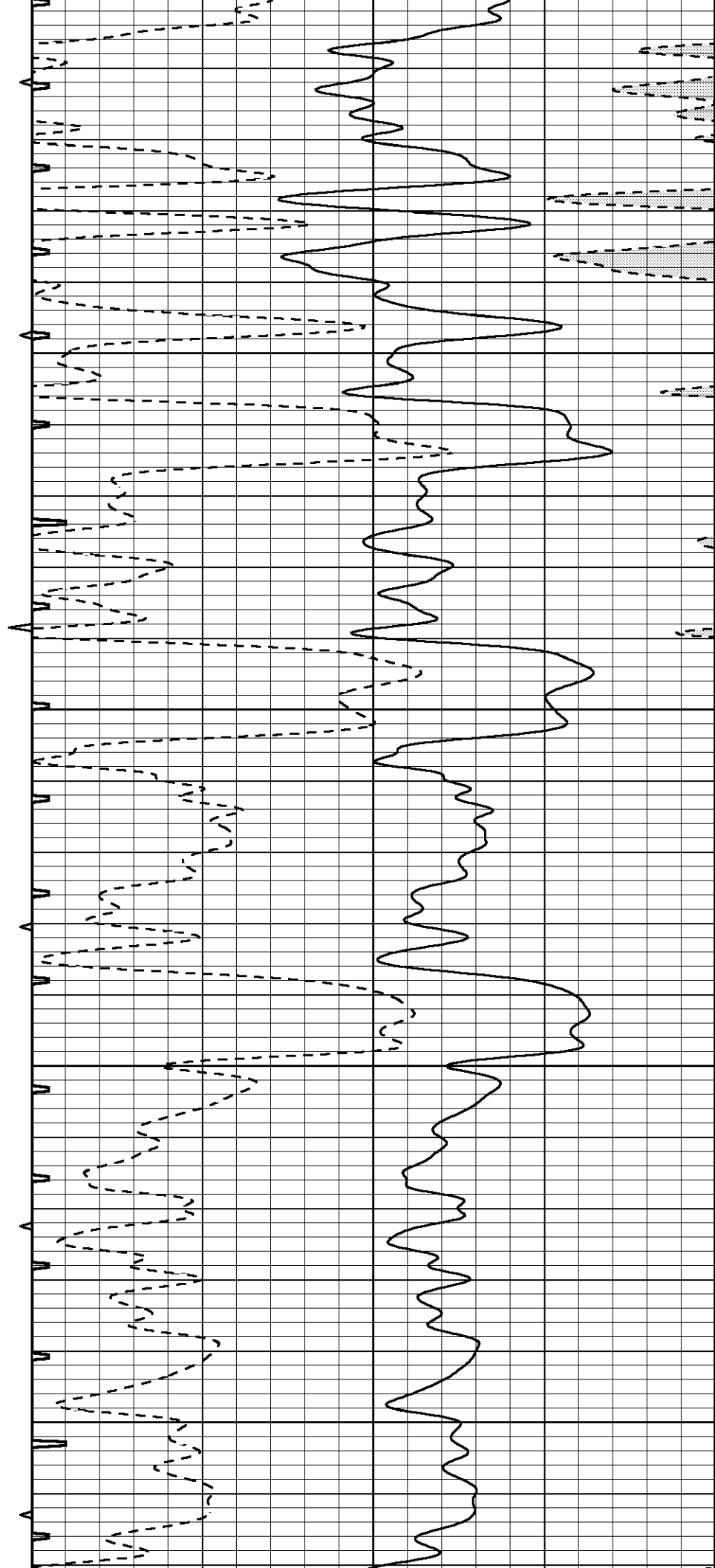
2400

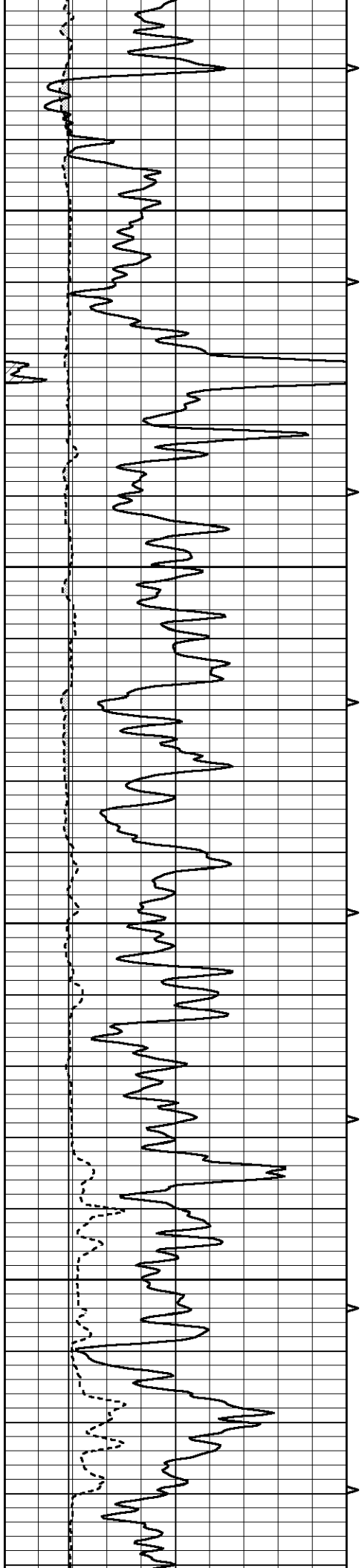






2850  
2800  
2750  
2700  
2650



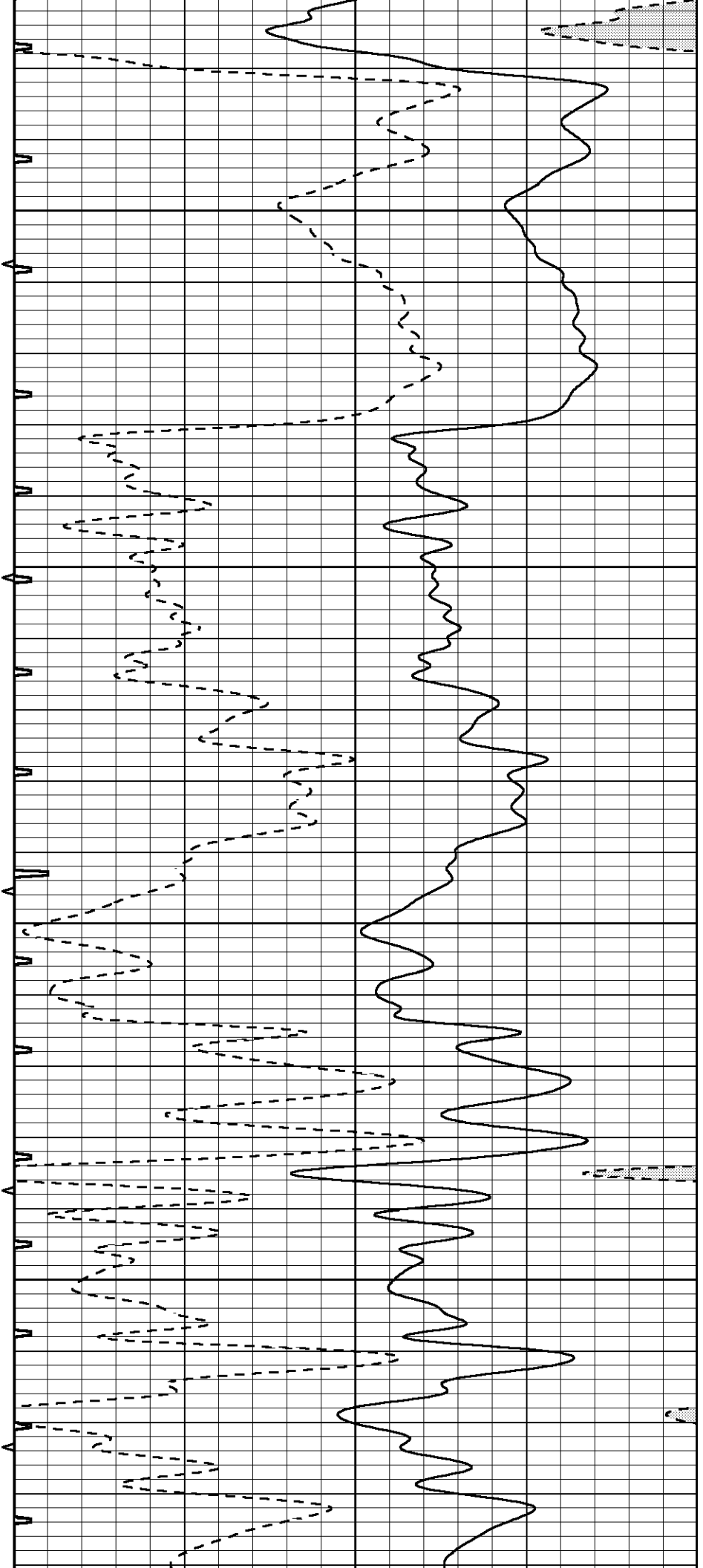


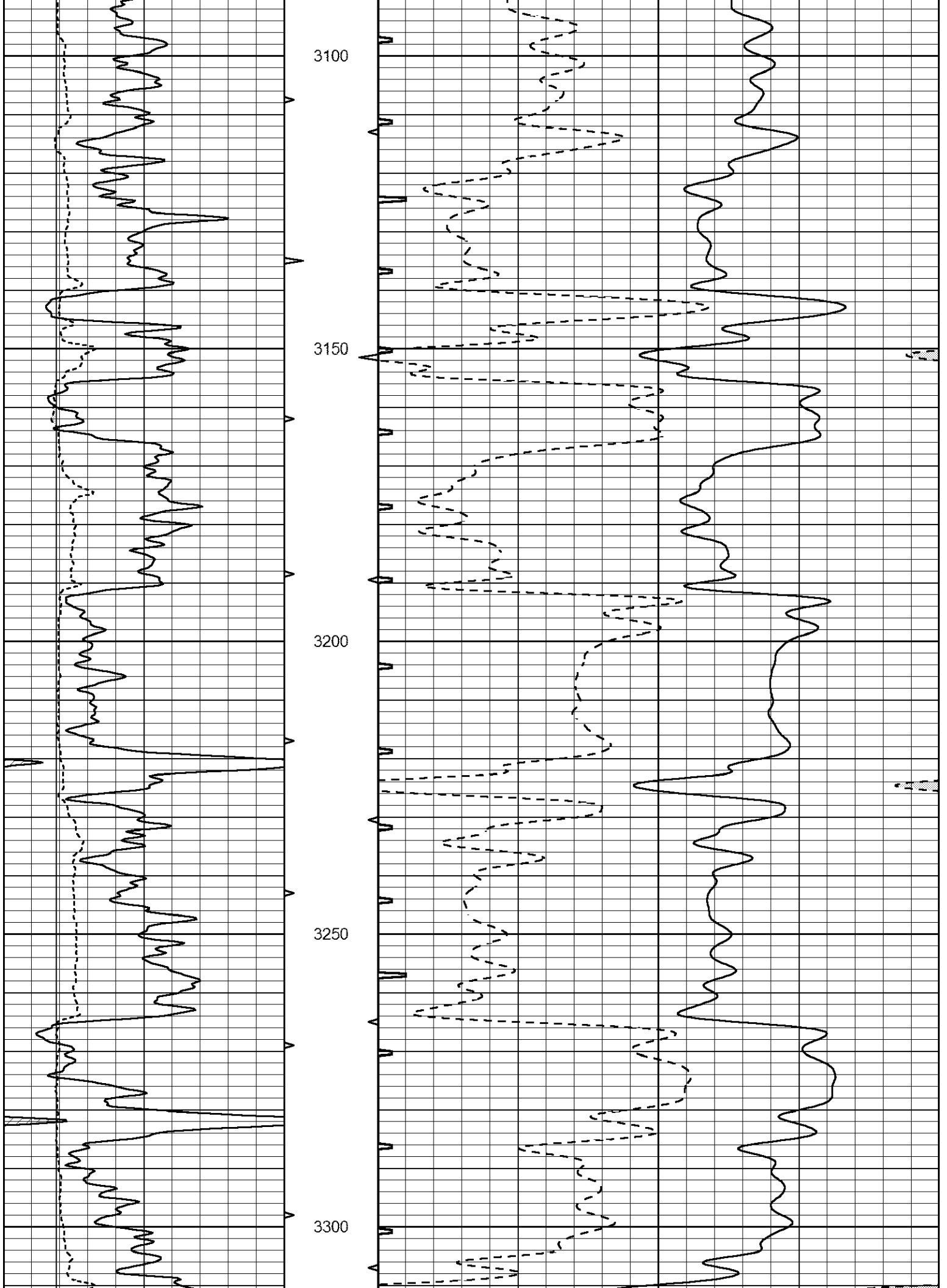
2900

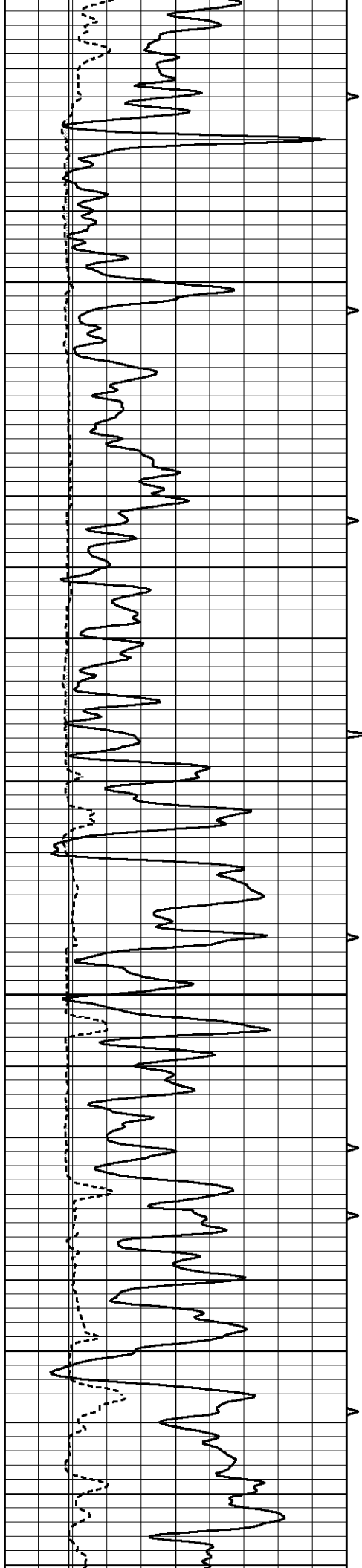
2950

3000

3050





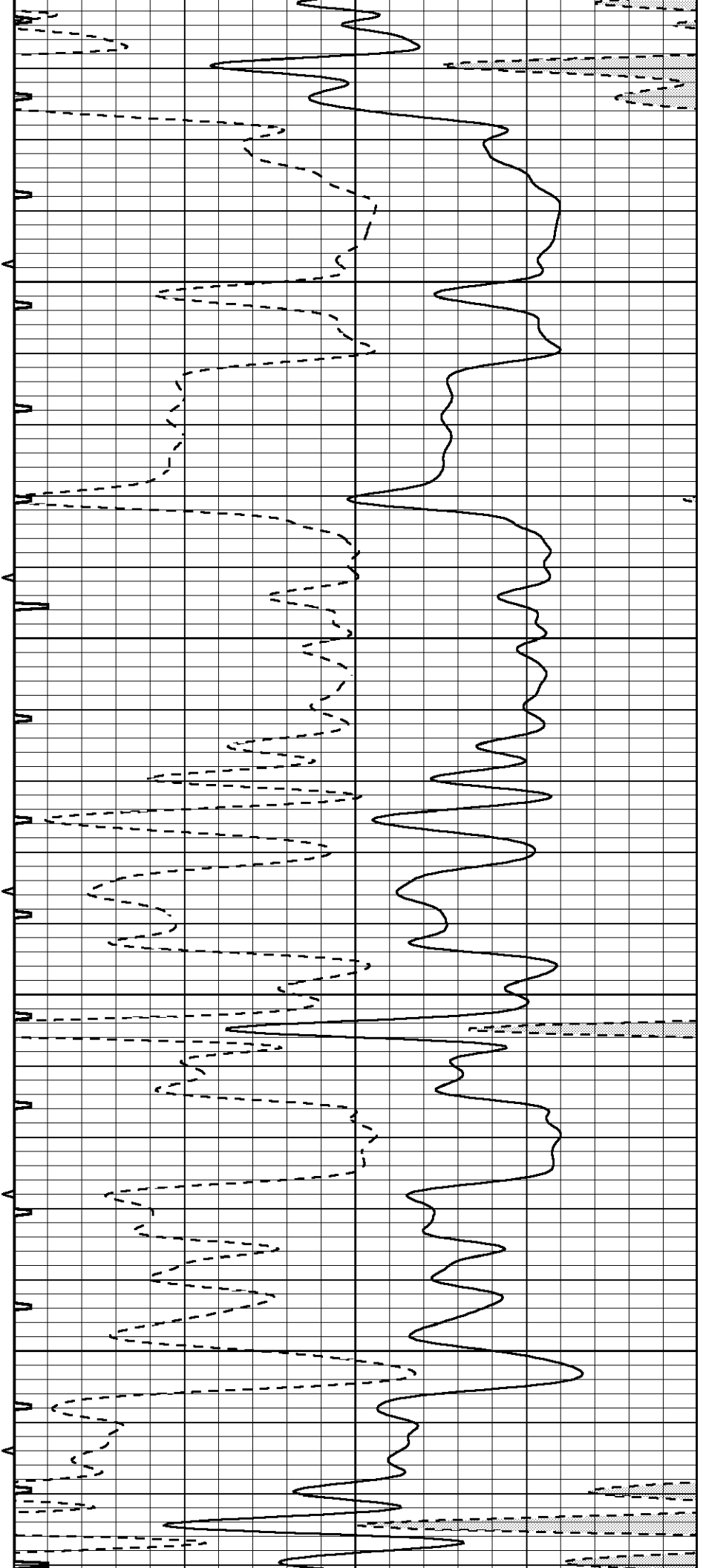


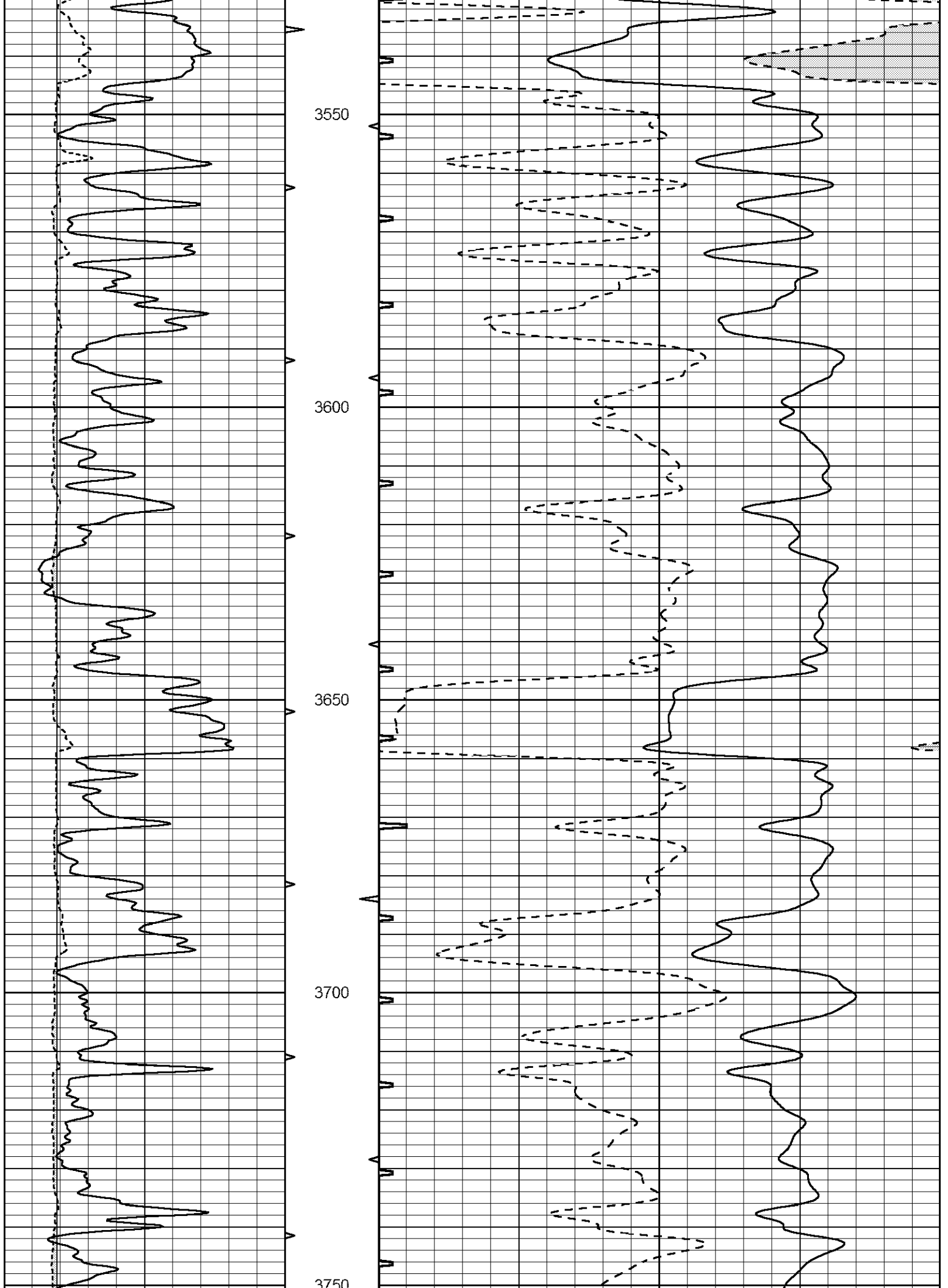
3350

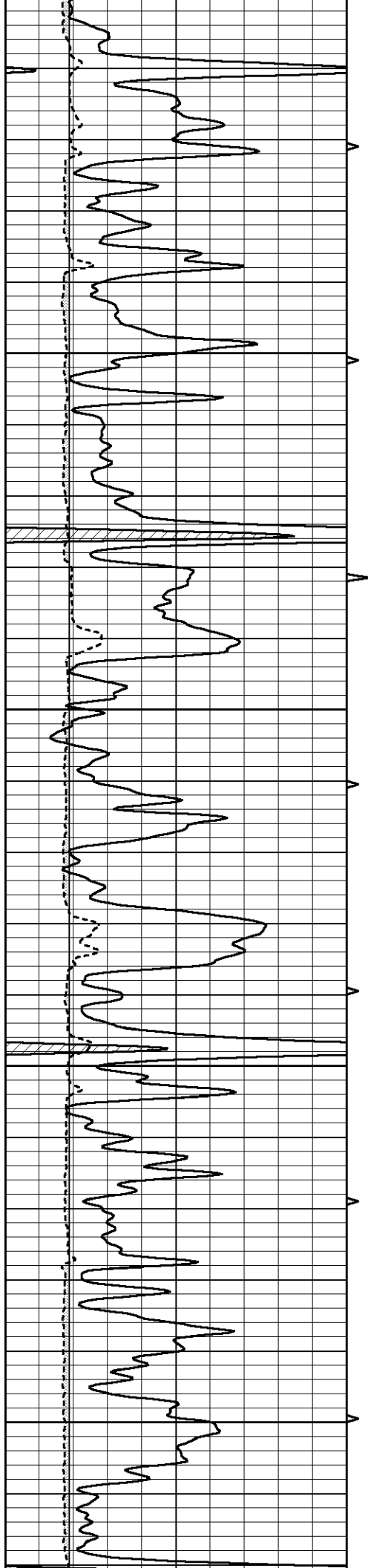
3400

3450

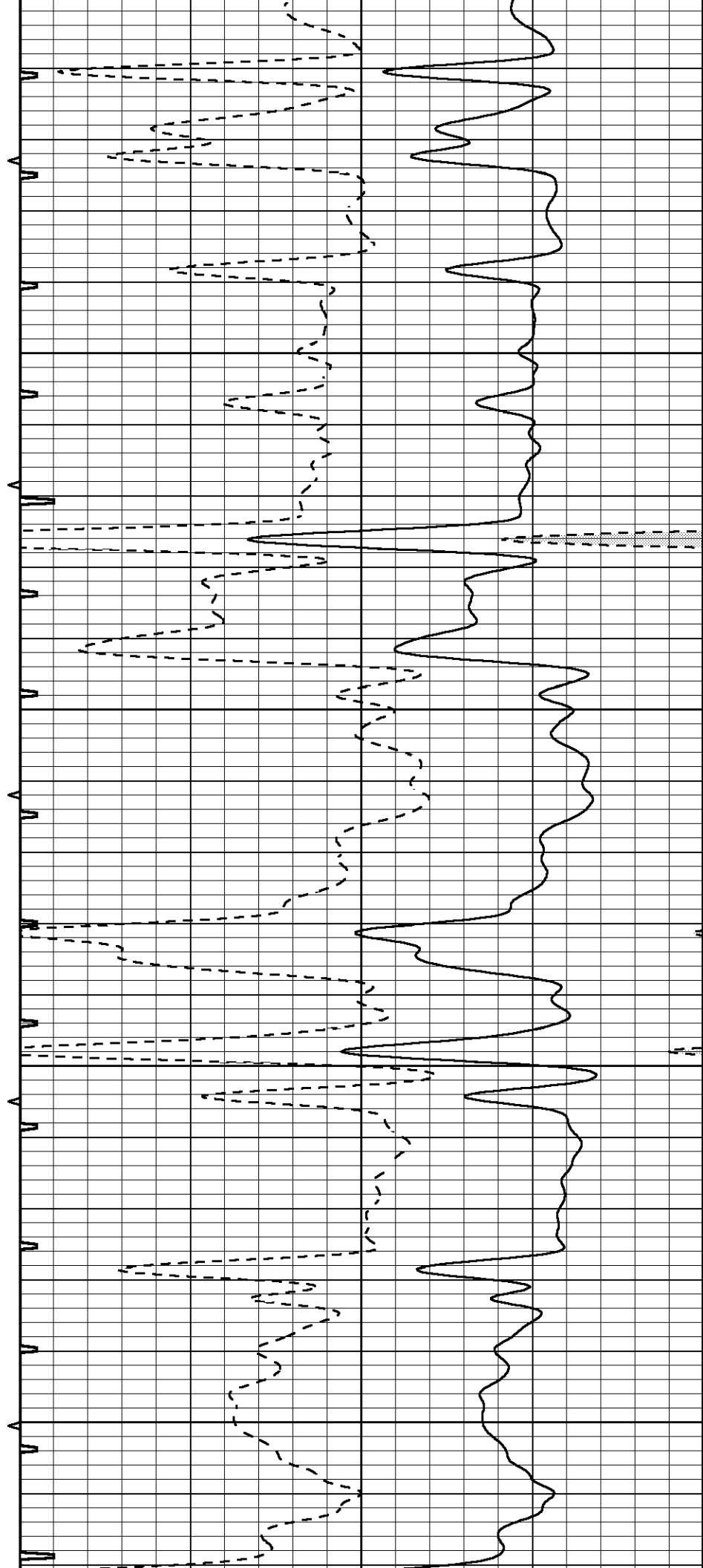
3500

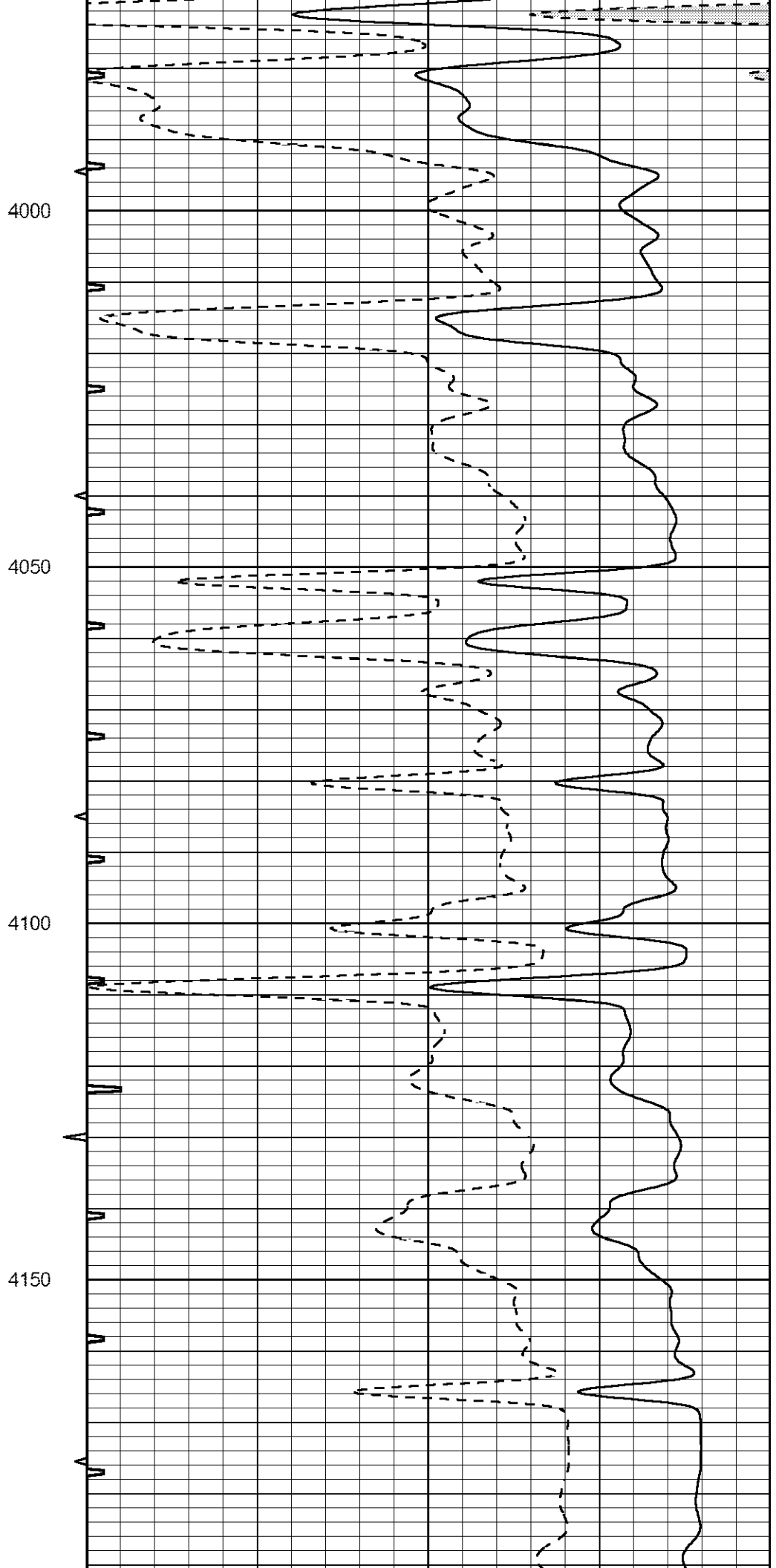
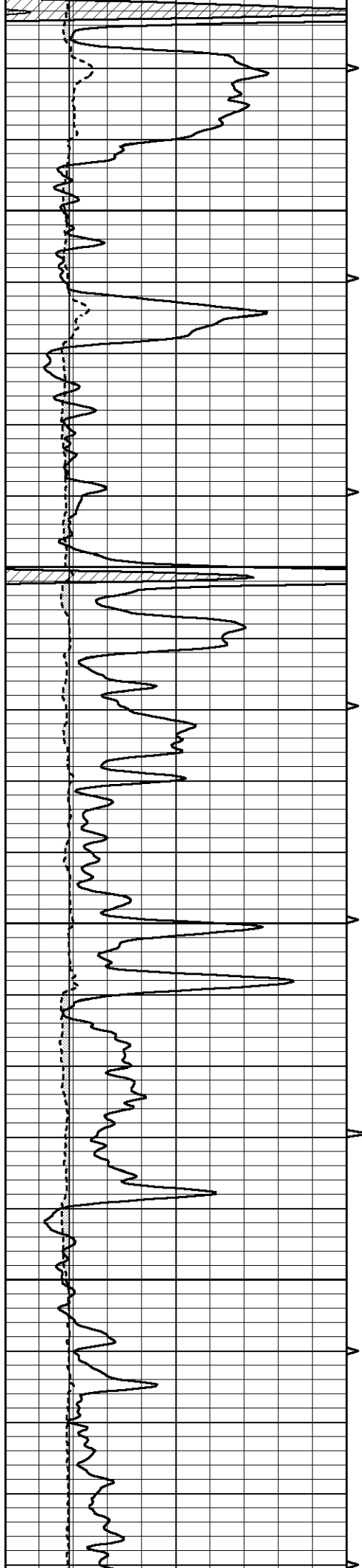


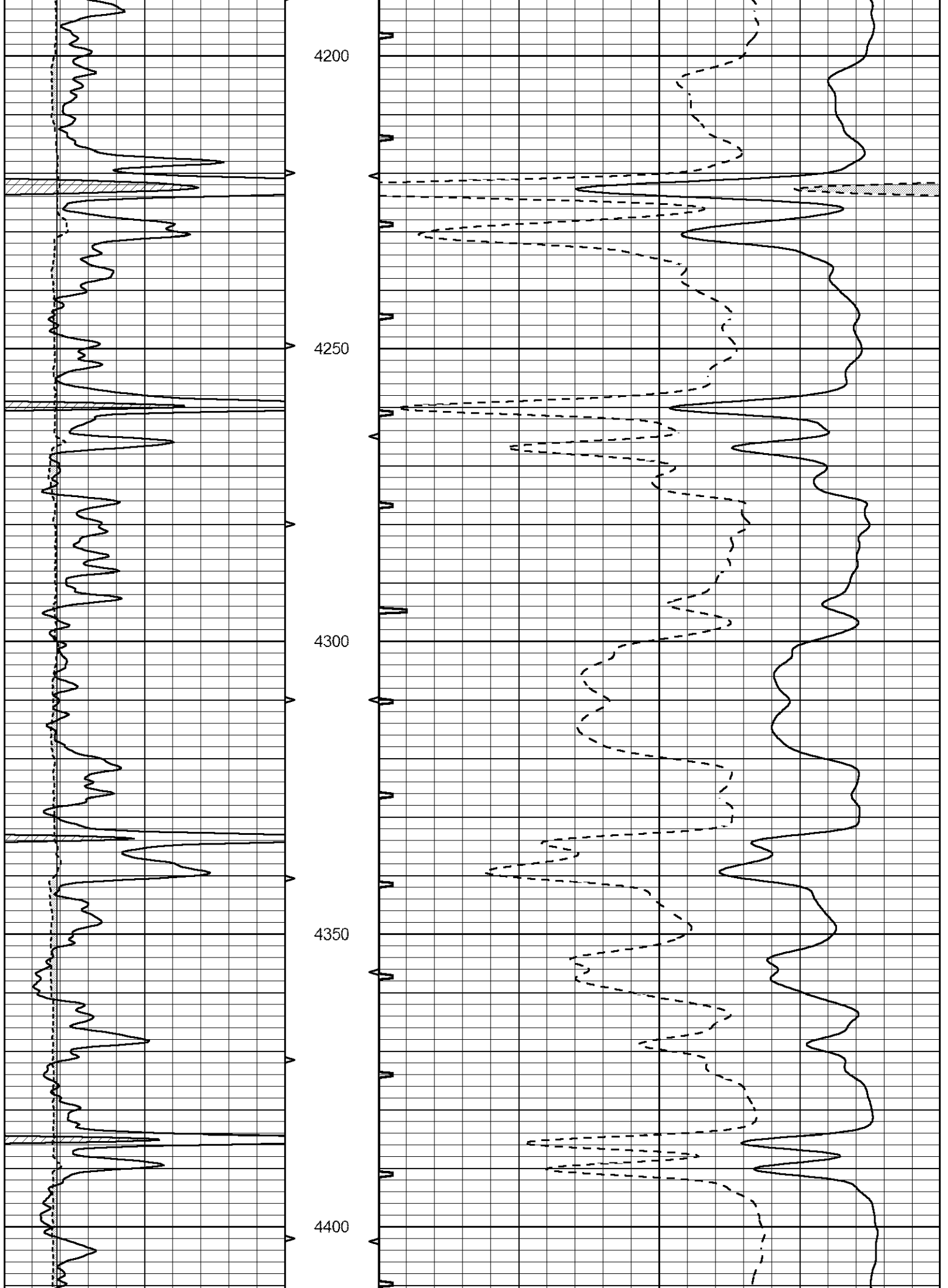


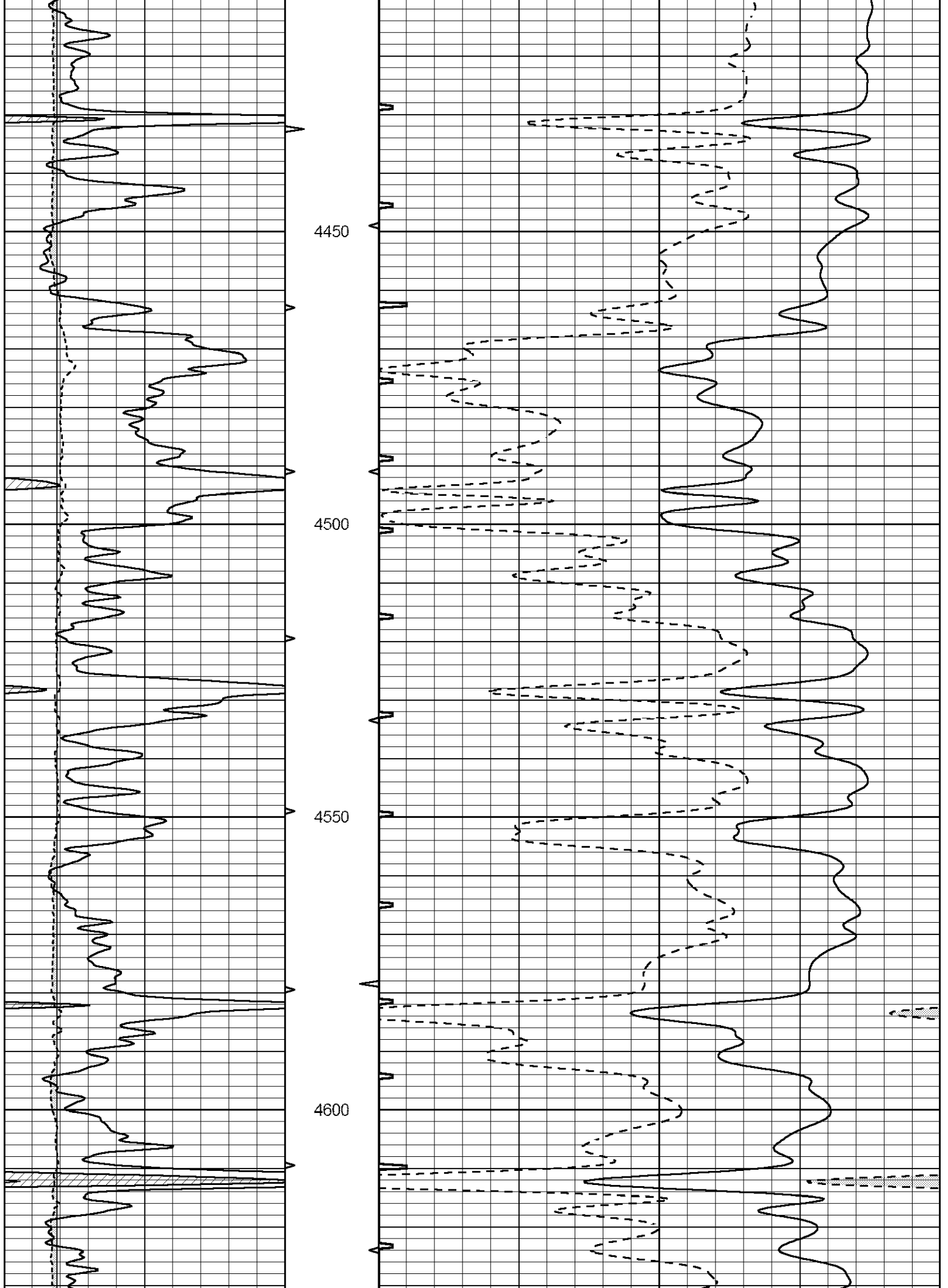


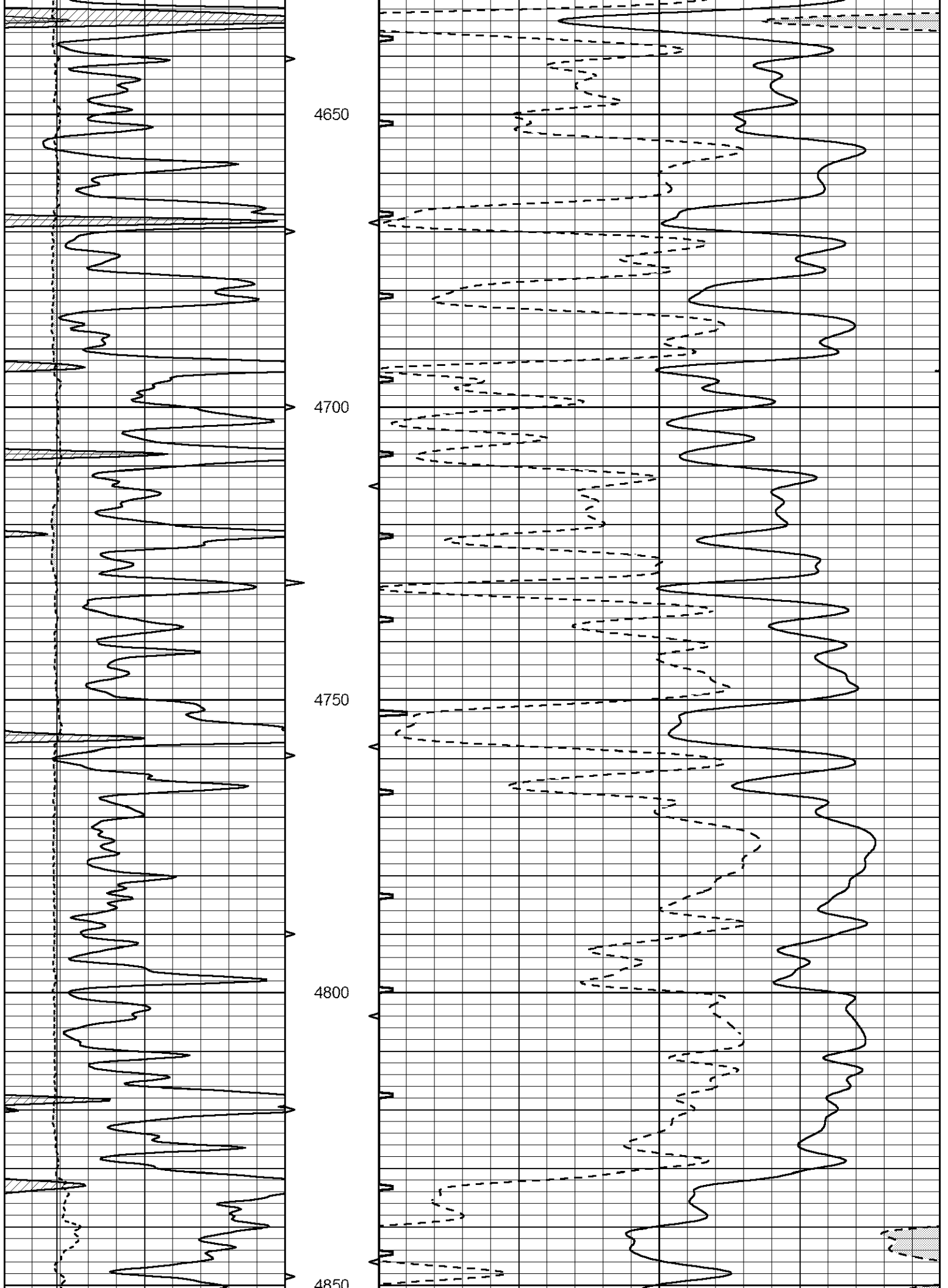
3700  
3800  
3850  
3900  
3950

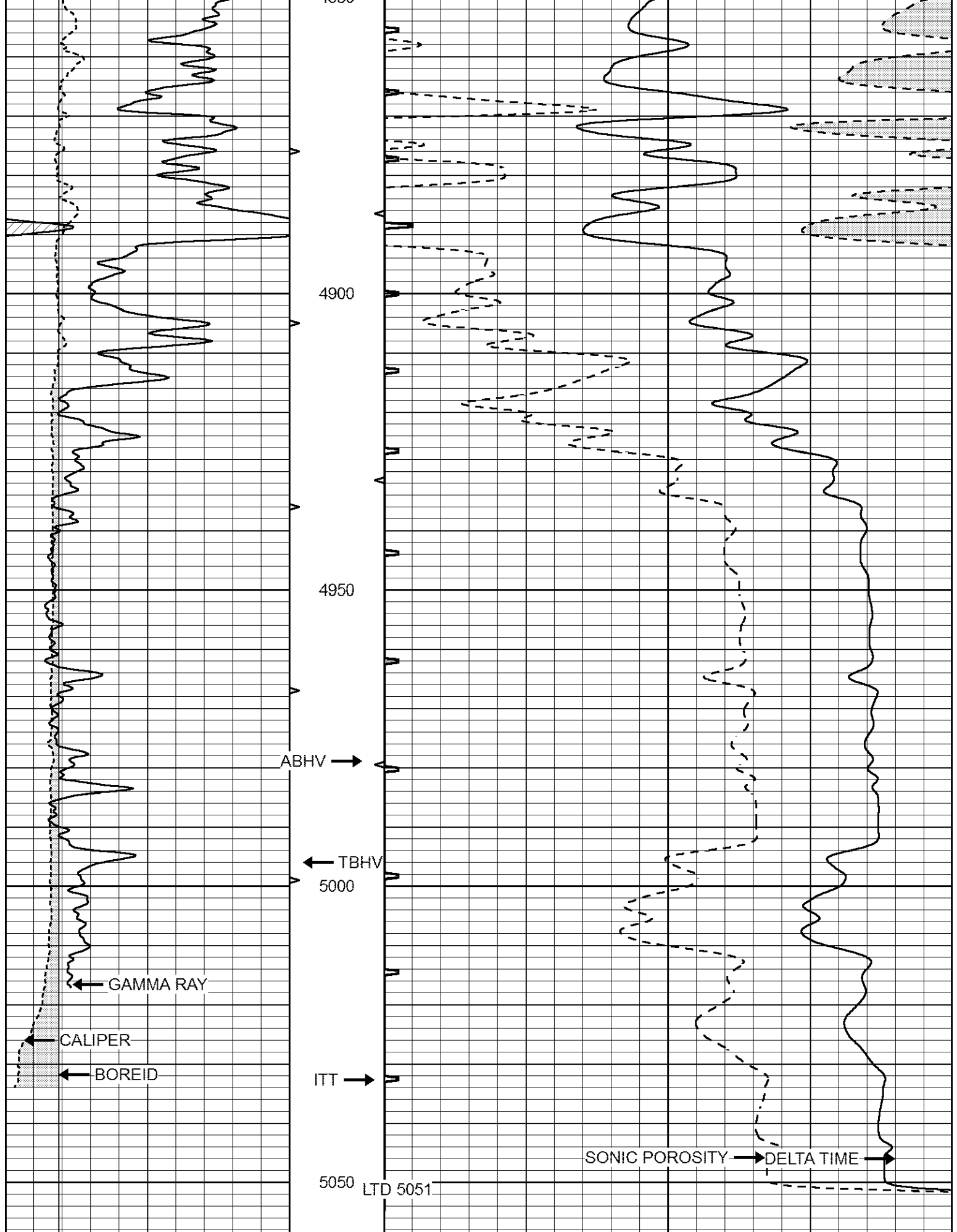












0	GAMMA RAY (GAPI)	150	ABHV	140	DELTA TIME (usec/ft)	40
6	CALIPER (in)	16	10 (ft3)	0 30	SONIC POROSITY (pu)	-10
			TRUV	0	ITT (msec)	20

TBHV	0	ITT (msec)	20
0 (ft3)	10		



# REPEAT SECTION

Database File 2042pe.db  
 Dataset Pathname pass7REPEAT  
 Presentation Format \_slt  
 Dataset Creation Mon Apr 16 02:15:37 2018  
 Charted by Depth in Feet scaled 1:240

0	GAMMA RAY (GAPI)	150	ABHV	140	DELTA TIME (usec/ft)	40	
6	CALIPER (in)	16	10 (ft3)	0	30	SONIC POROSITY (pu)	-10
			TBHV	0	ITT (msec)	20	
			0 (ft3)	10			

