



DUAL INDUCTION LOG

Company LARIO OIL & GAS COMPANY
 Well LANG A #1-12
 Field LANGWICH
 County WICHITA State KANSAS

Location: API #: 15-203-20330-00-00
 660' FSL & 4620' FEL
 SEC 12 TWP 20S RGE 35W
 Permanent Datum GROUND LEVEL Elevation 3127
 Log Measured From KELLY BUSHING 11' A.G.L.
 Drilling Measured From KELLY BUSHING
 Other Services CDL/CNL/MEL SONIC
 Elevation K.B. 3138
 D.F. 3136
 G.L. 3127

Date	4/15/18
Run Number	ONE
Depth Driller	5050
Depth Logger	5051
Bottom Logged Interval	5049
Top Log Interval	50
Casing Driller	8 5/8" @ 351
Casing Logger	351
Bit Size	7 7/8
Type Fluid in Hole	CHEMICAL MUD
Density / Viscosity	9.2/58
PH / Fluid Loss	10.0/8.8
Source of Sample	FLOWLINE
Rm @ Meas. Temp	1.8 @ 62F
Rmt @ Meas. Temp	1.35 @ 62F
Rmc @ Meas. Temp	2.16 @ 62F
Source of Rmf / Rmc	MEASUREMENT
Rm @ BHT	.88 @ 126F
Time Circulation Stopped	2 HOURS
Time Logger on Bottom	////
Maximum Recorded Temperature	126F
Equipment Number	3802
Location	HAYS, KANSAS
Recorded By	GUS PFANENSTIEL
Witnessed By	TIM LAUER

<<< Fold Here >>>

All interpretations are opinions based on inferences from electrical or other measurements and we cannot and do not guarantee the accuracy or correctness of any interpretation, and we shall not, except in the case of gross or willful negligence on our part, be liable or responsible for any loss, costs, damages, or expenses incurred or sustained by anyone resulting from any interpretation made by any of our officers, agents or employees. These interpretations are also subject to our general terms and conditions set out in our current Price Schedule.

Comments

THANK YOU FOR USING ELI WIRELINE SERVICES, HAYS, KS. (785) 628-6395
 DIRECTIONS
 WEST OF SCOTT CITY TO COUNTY LINE 11 SOUTH,
 1 WEST, NORTH INTO.

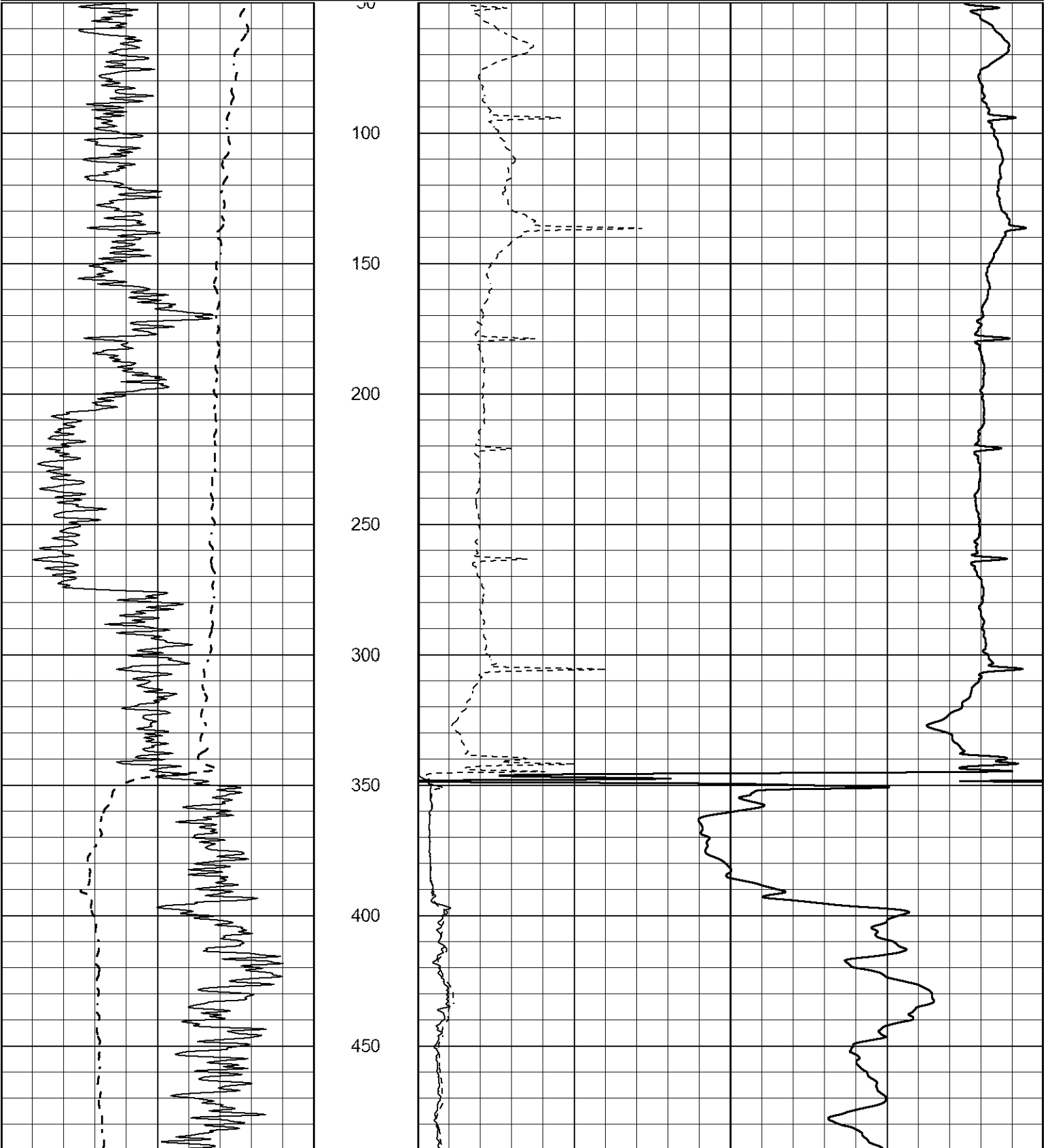


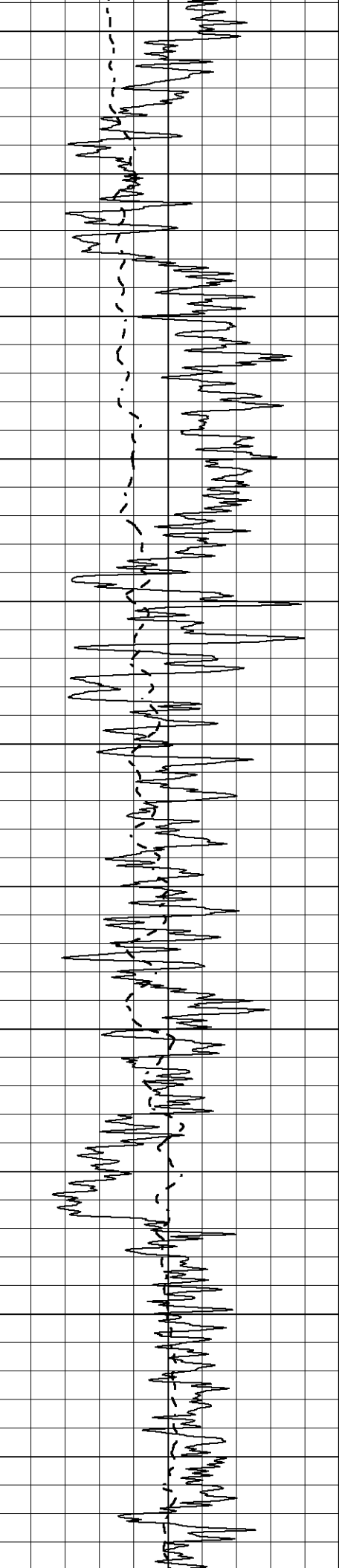
MAIN PASS

Database File 2042pe.db
 Dataset Pathname pass4DIL
 Presentation Format _dil2
 Dataset Creation Mon Apr 16 00:41:59 2018
 Charted by Depth in Feet scaled 1:600

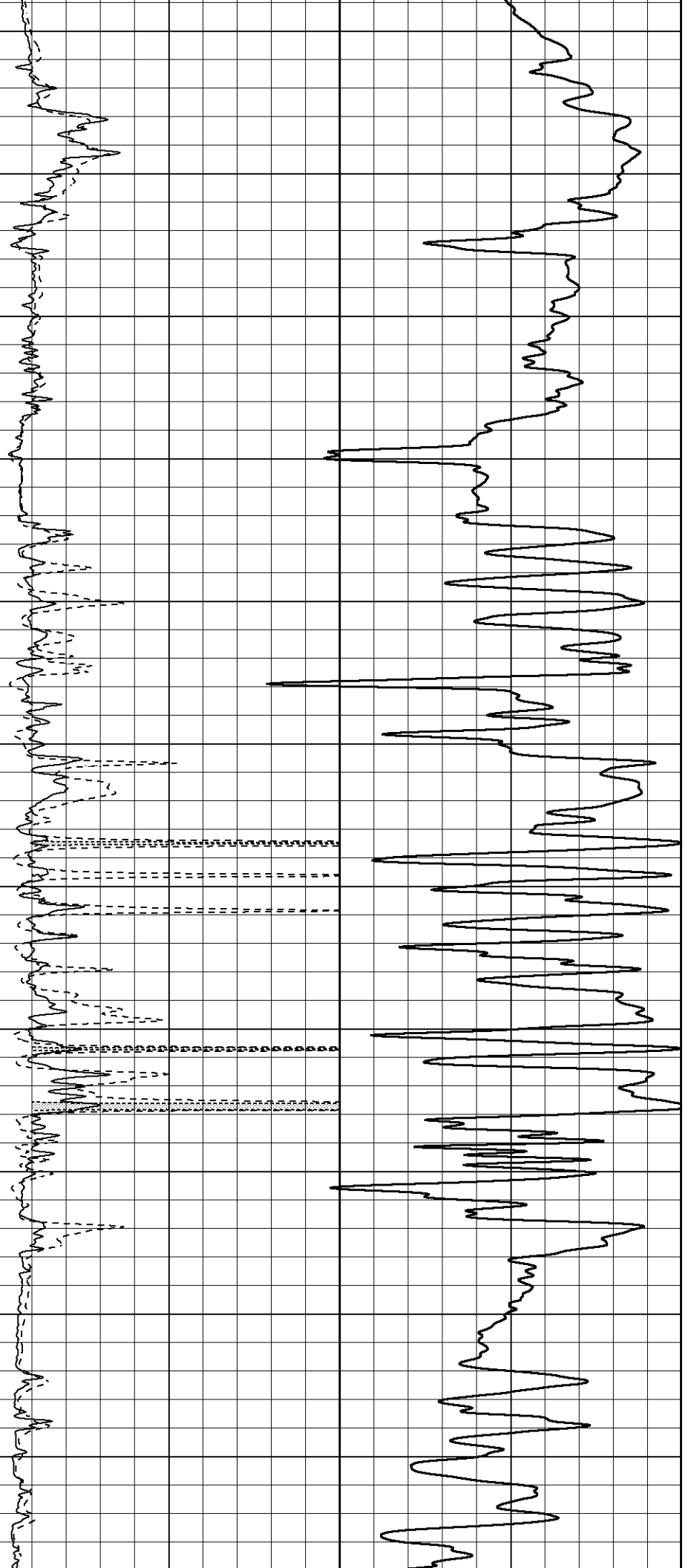
0 Gamma Ray (GAPI) 150
 -100 SP (mV) 100

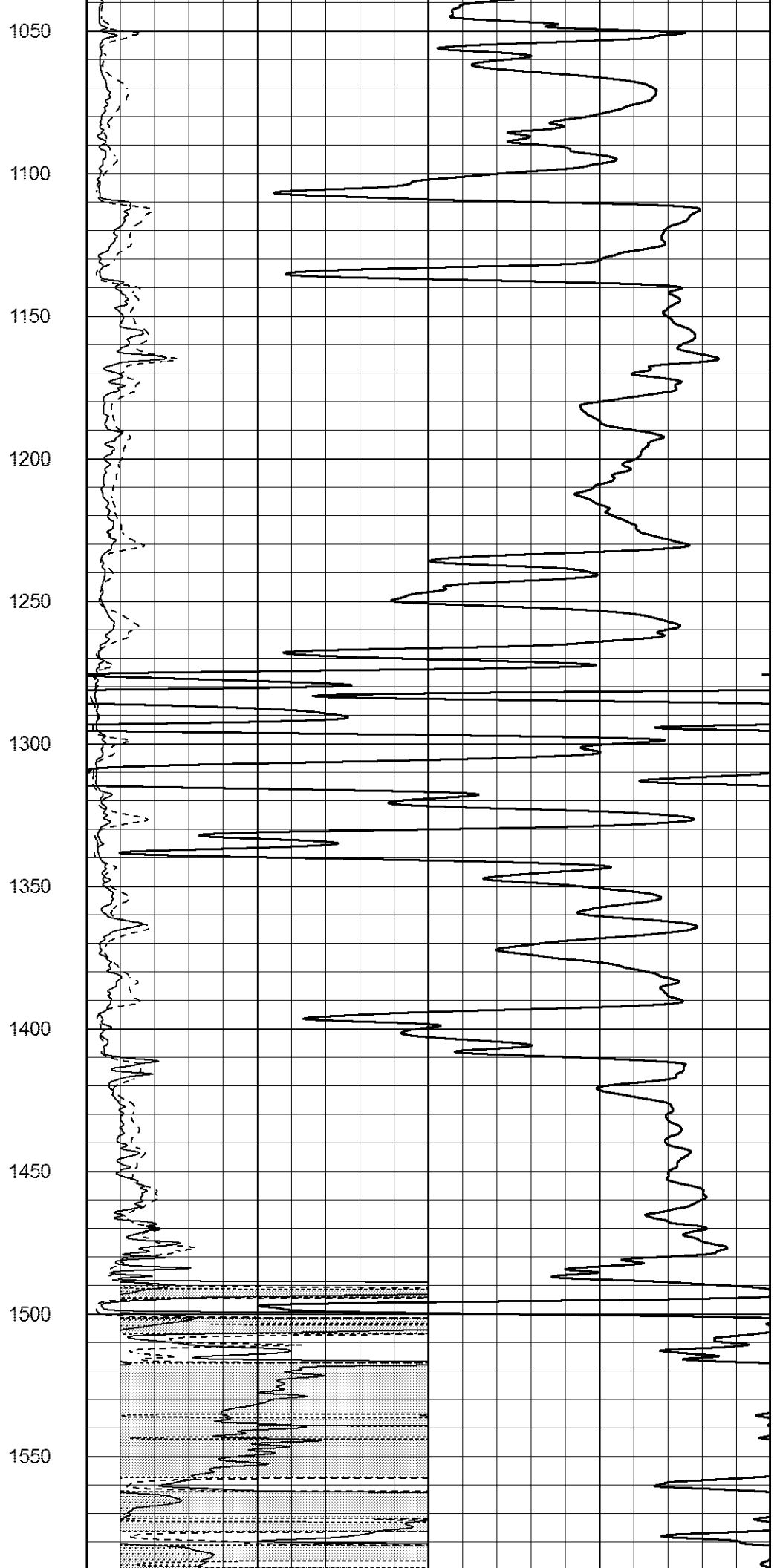
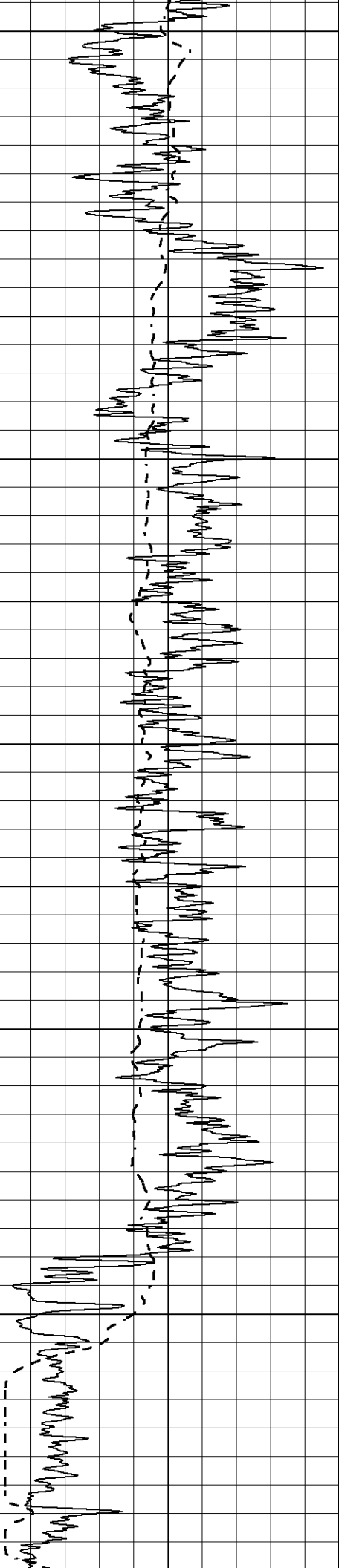
1000 CILD (mmho/m) 0
 0 RLL3 (Ohm-m) 50
 0 Deep Induction (Ohm-m) 50
 50 RILD X10 (Ohm-m) 500
 50 RLL3 X10 (Ohm-m) 500

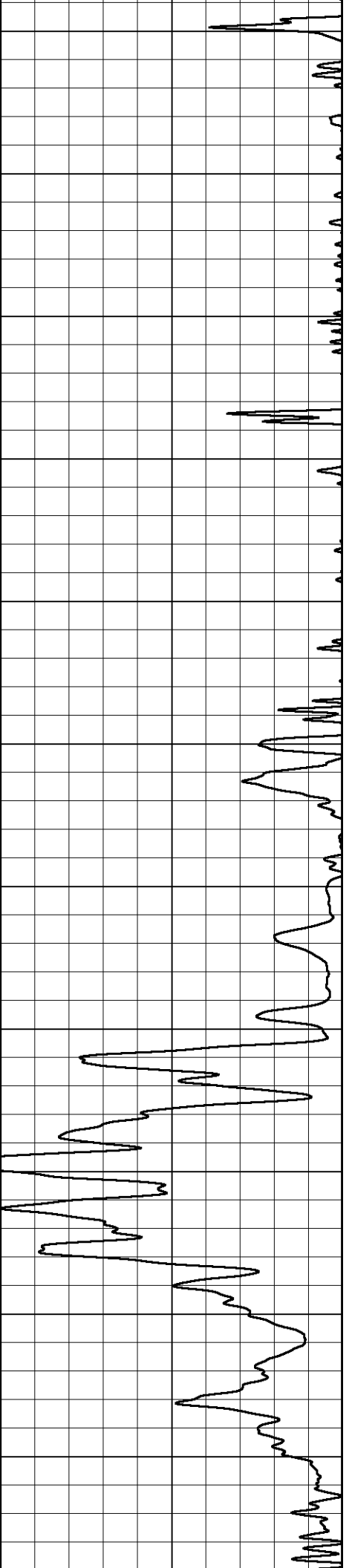
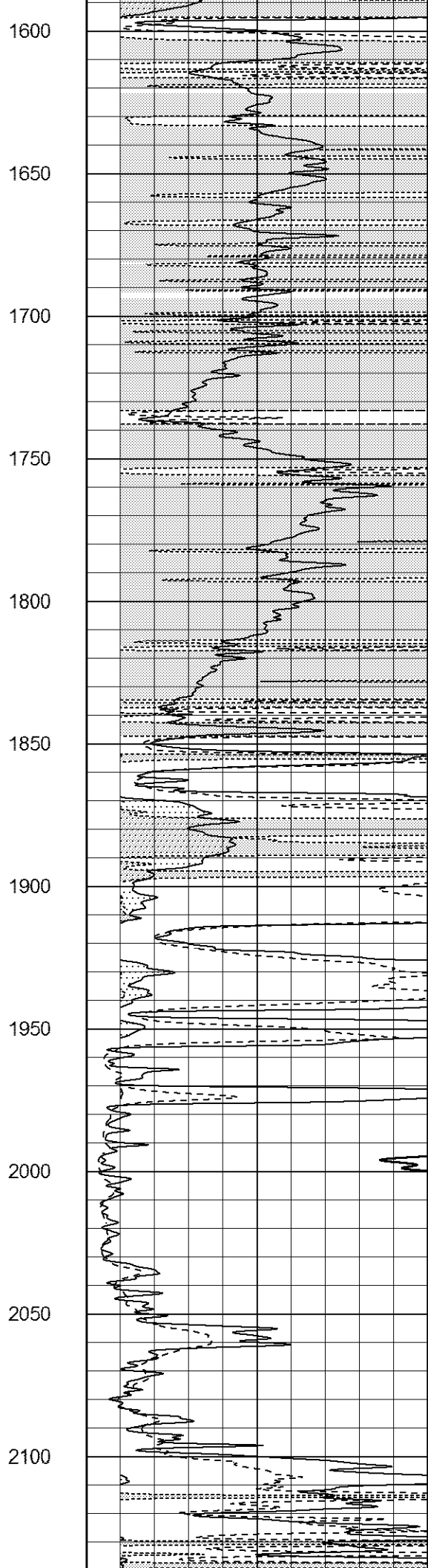
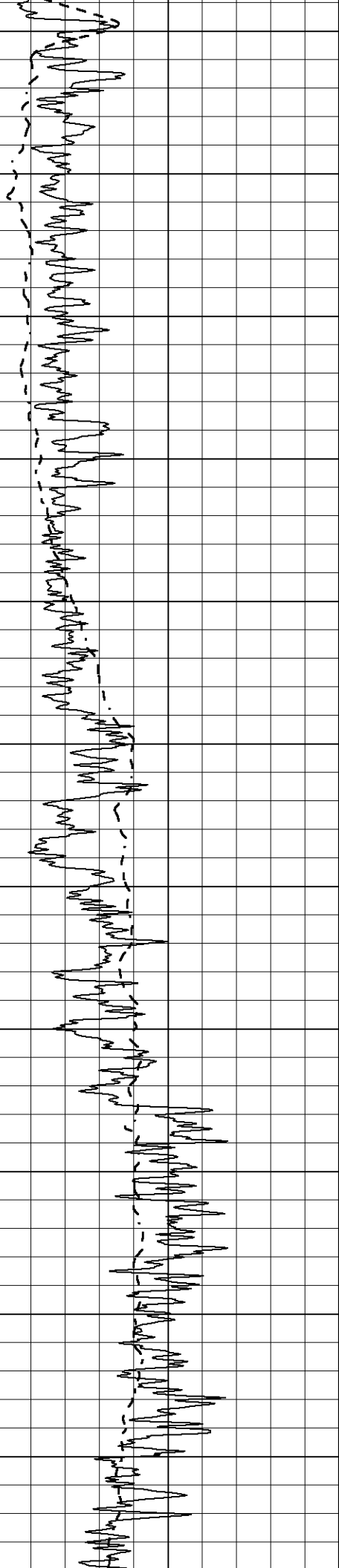


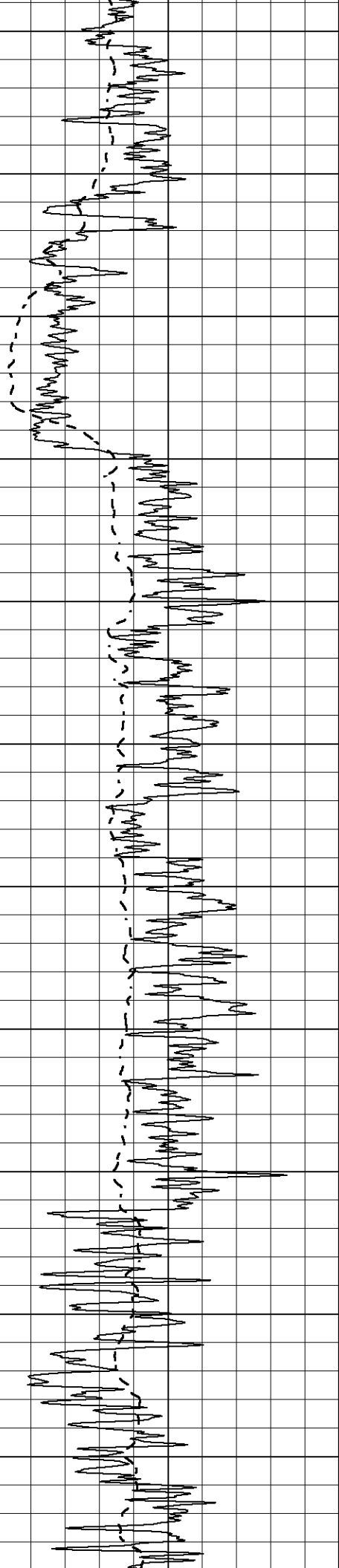


500
550
600
650
700
750
800
850
900
950
1000









2150

2200

2250

2300

2350

2400

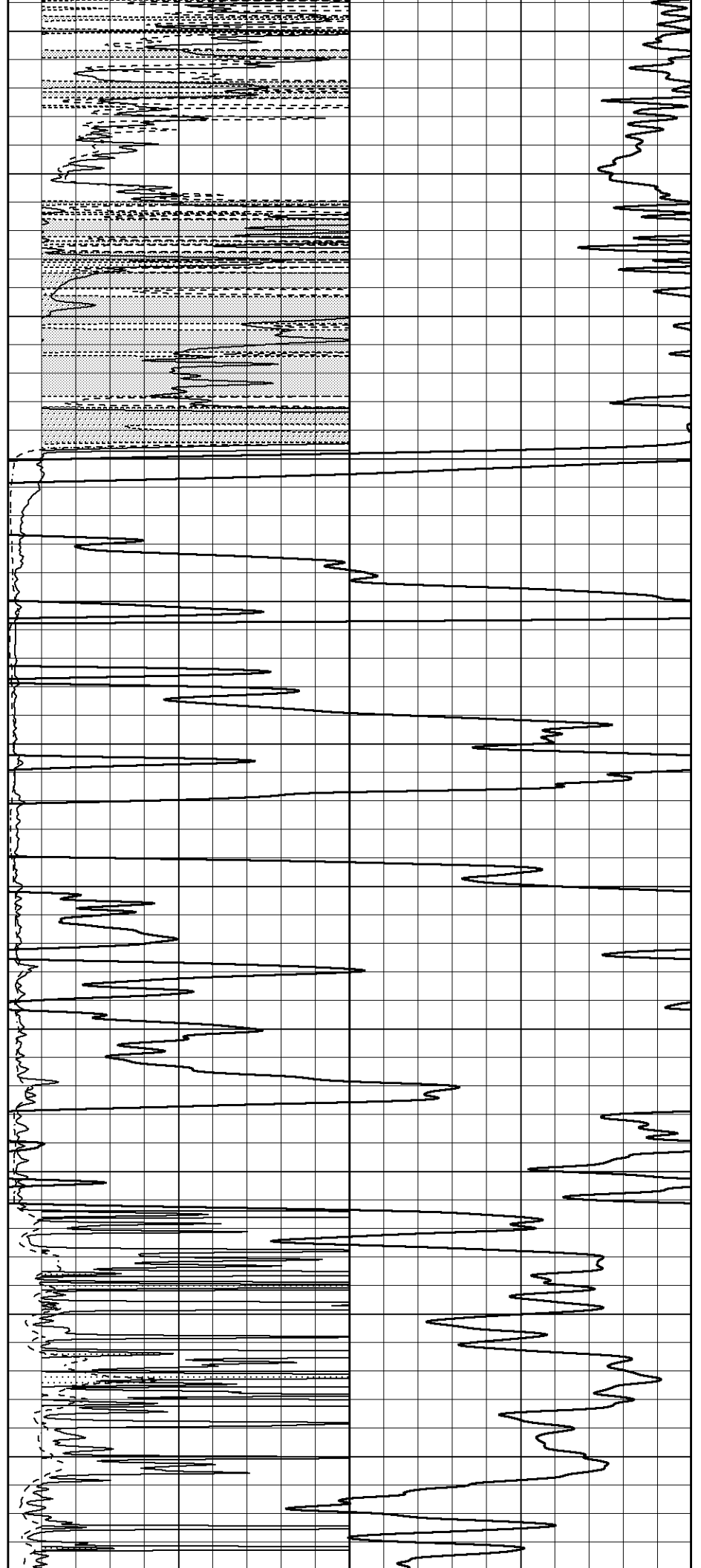
2450

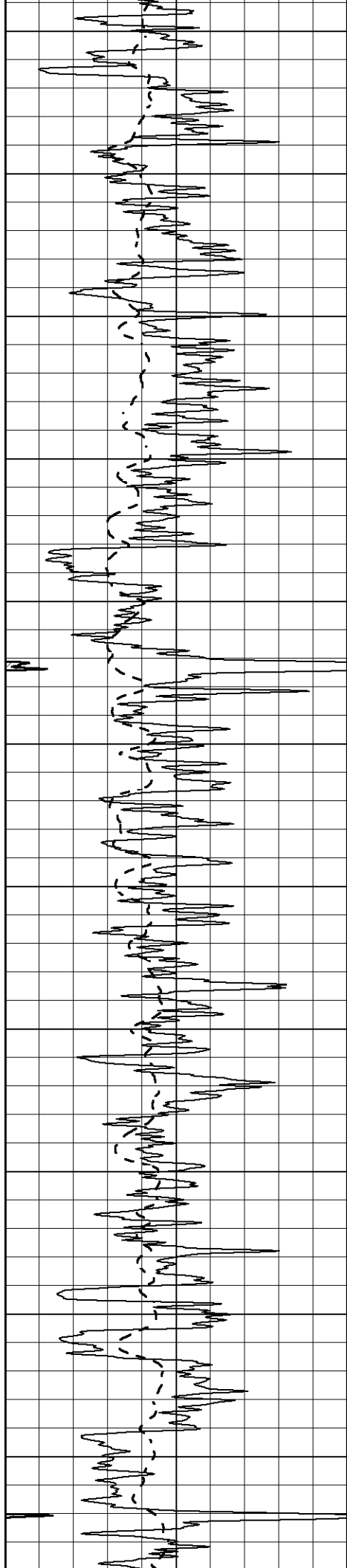
2500

2550

2600

2650





2700

2750

2800

2850

2900

2950

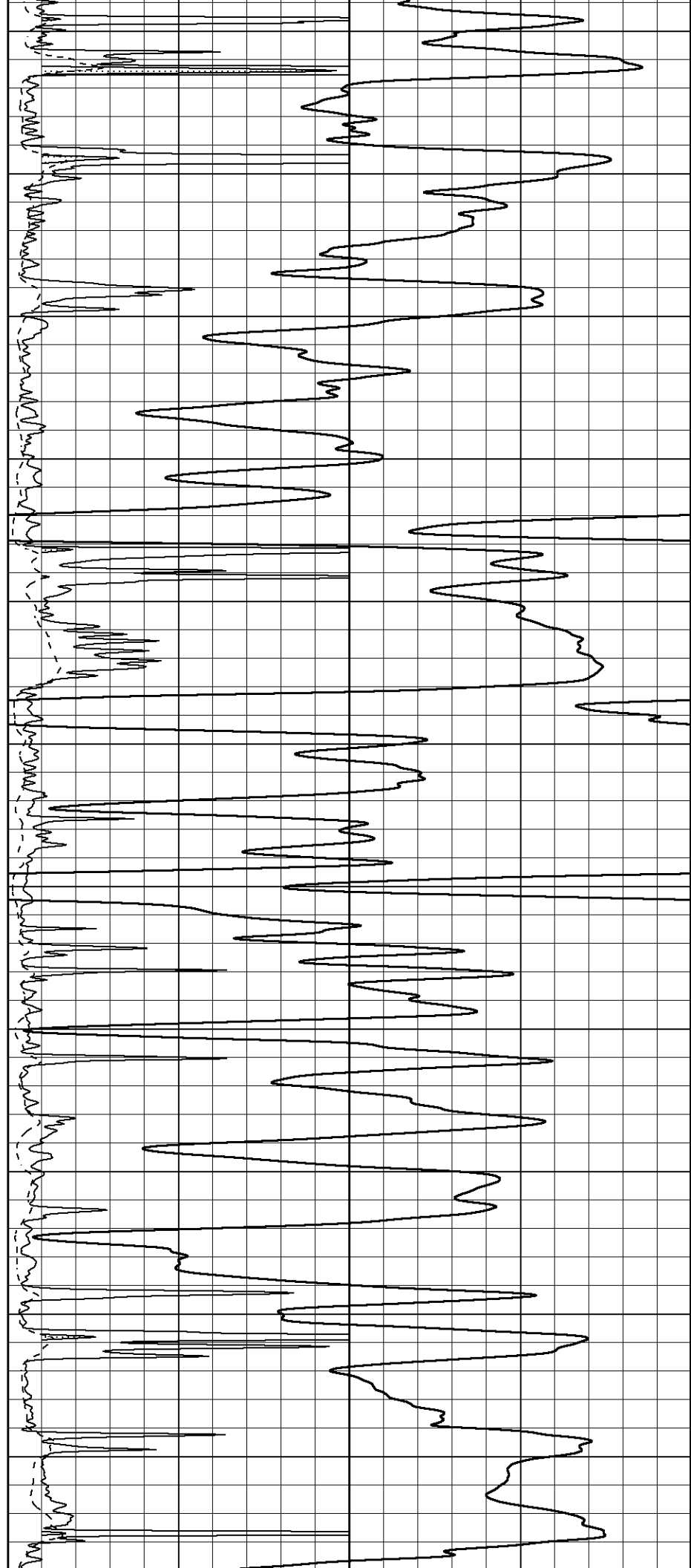
3000

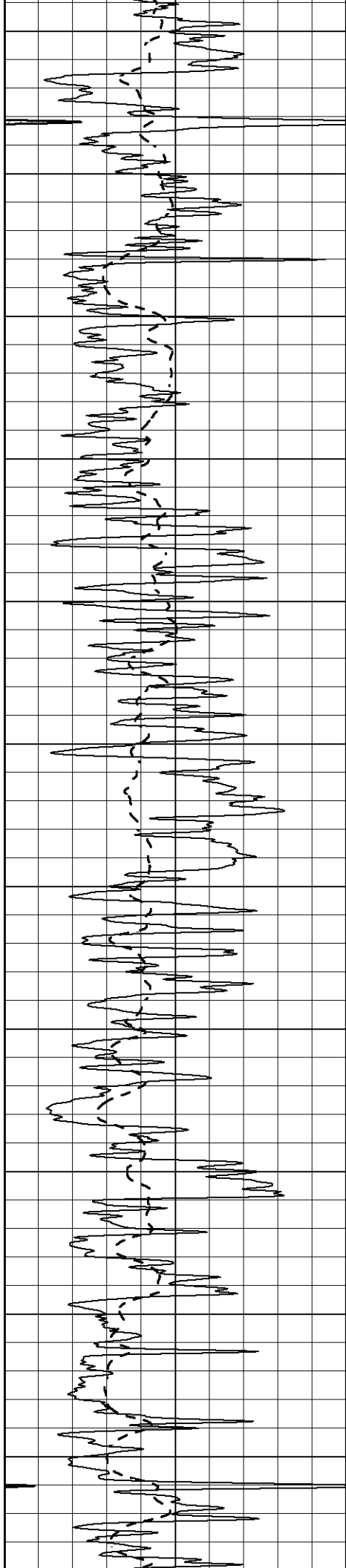
3050

3100

3150

3200





3250

3300

3350

3400

3450

3500

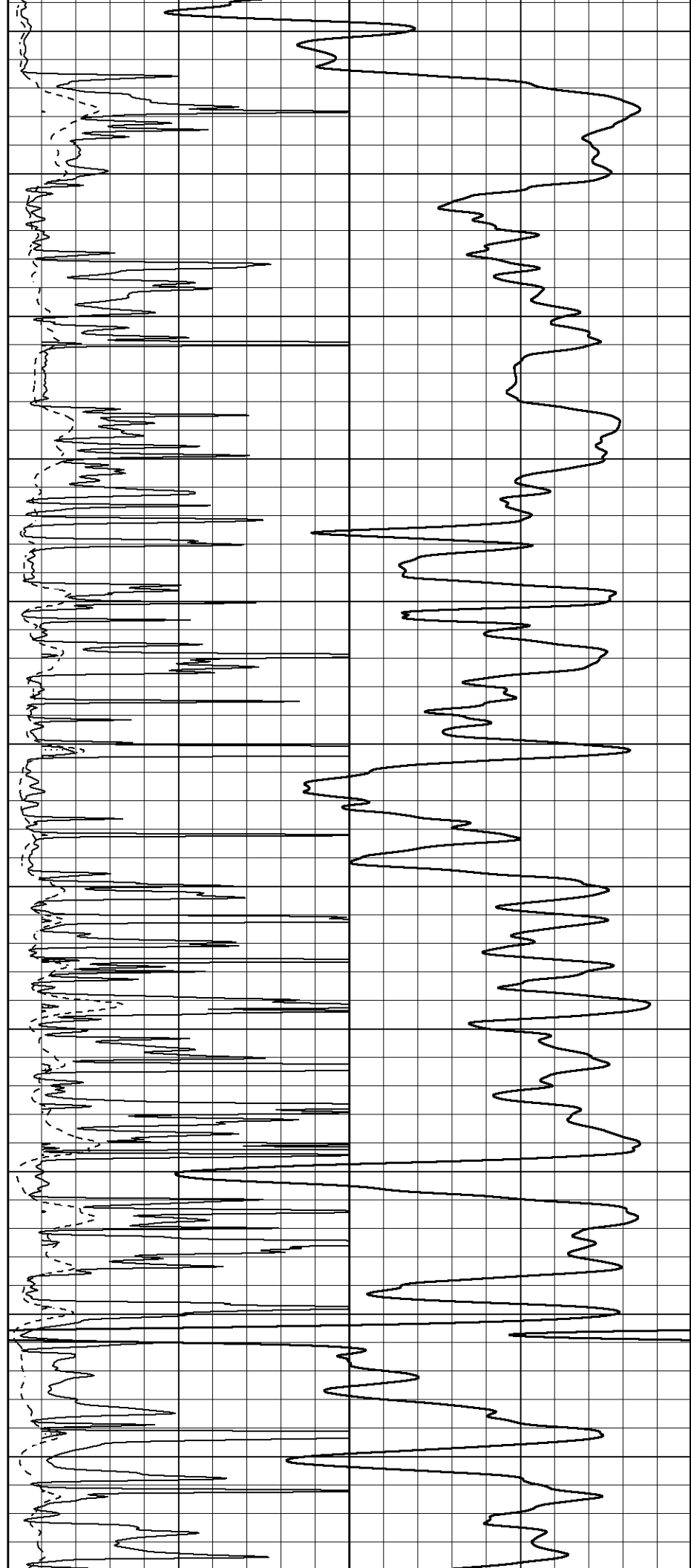
3550

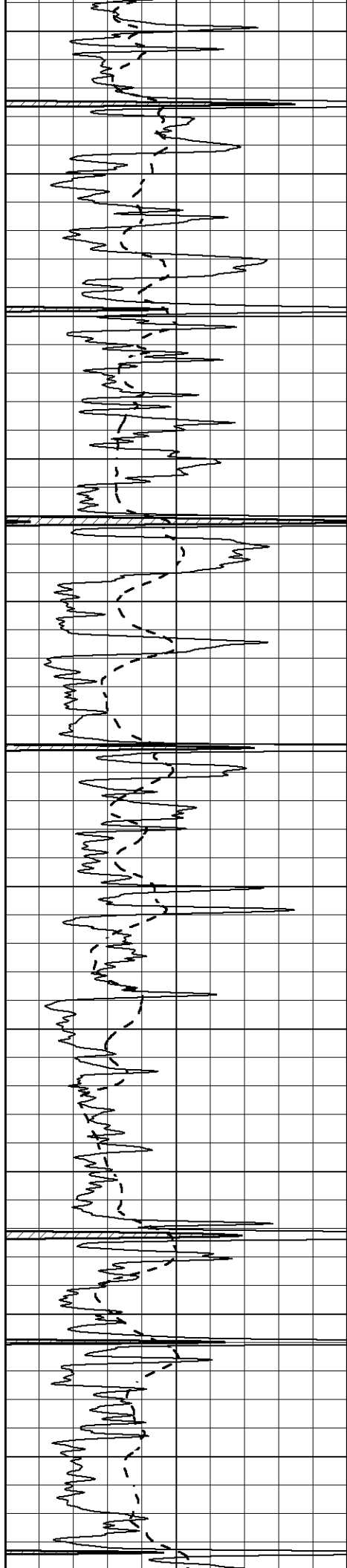
3600

3650

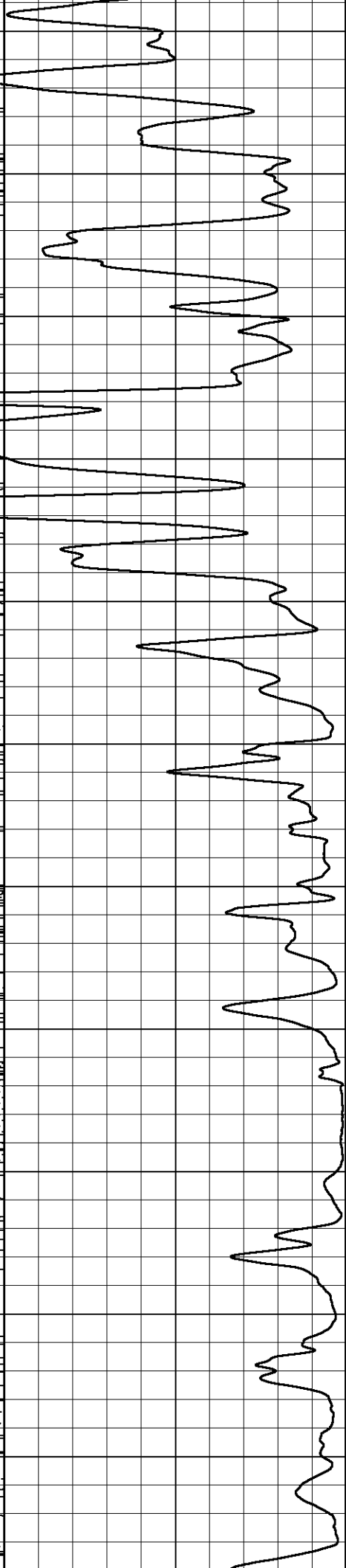
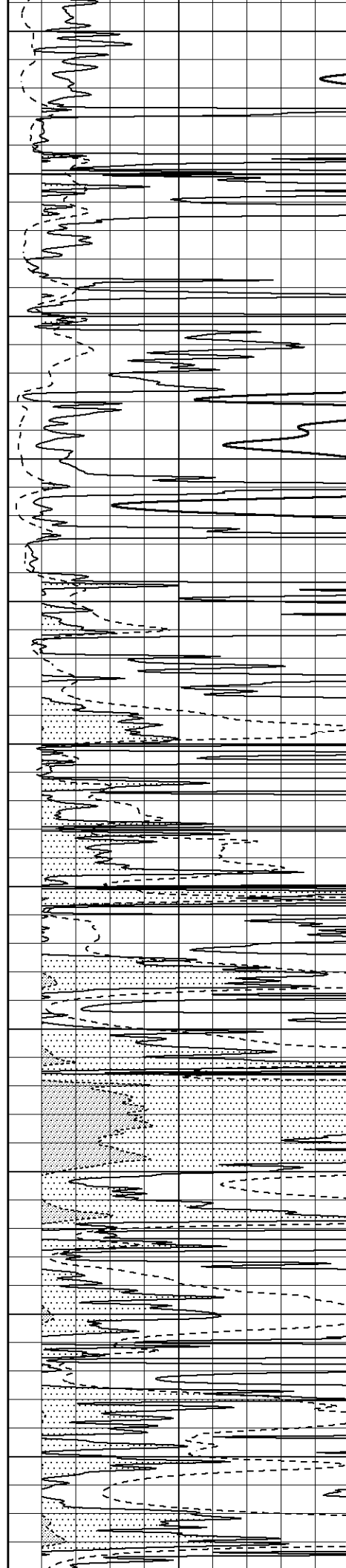
3700

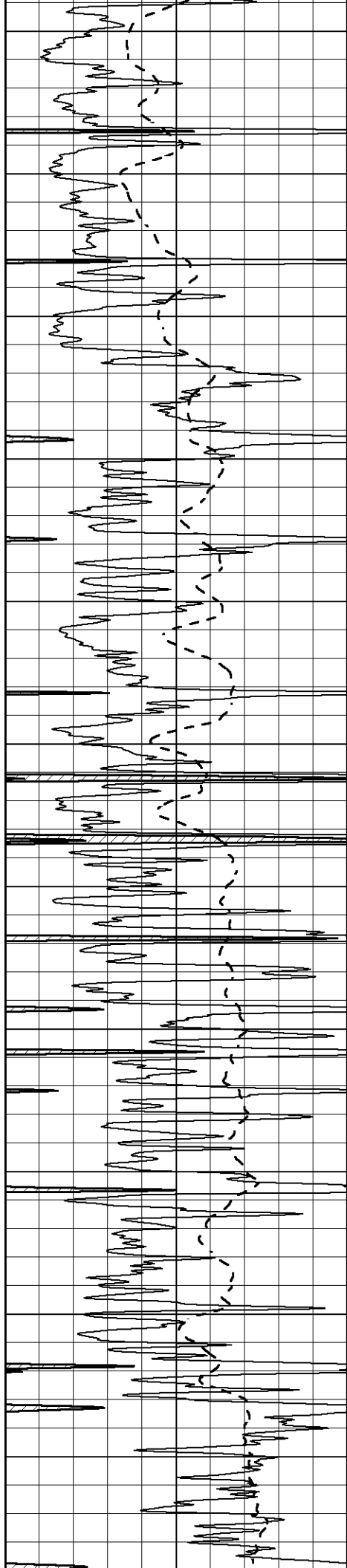
3750



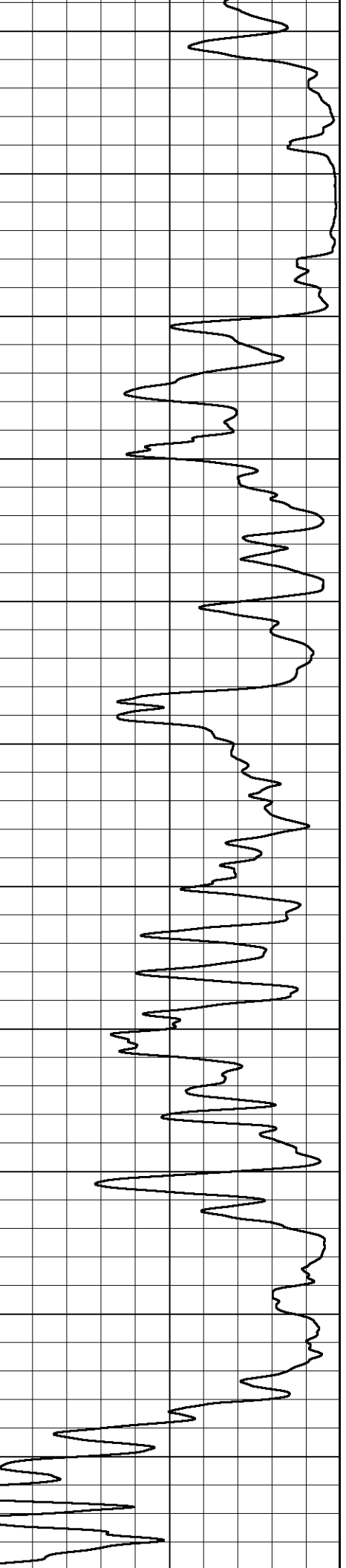
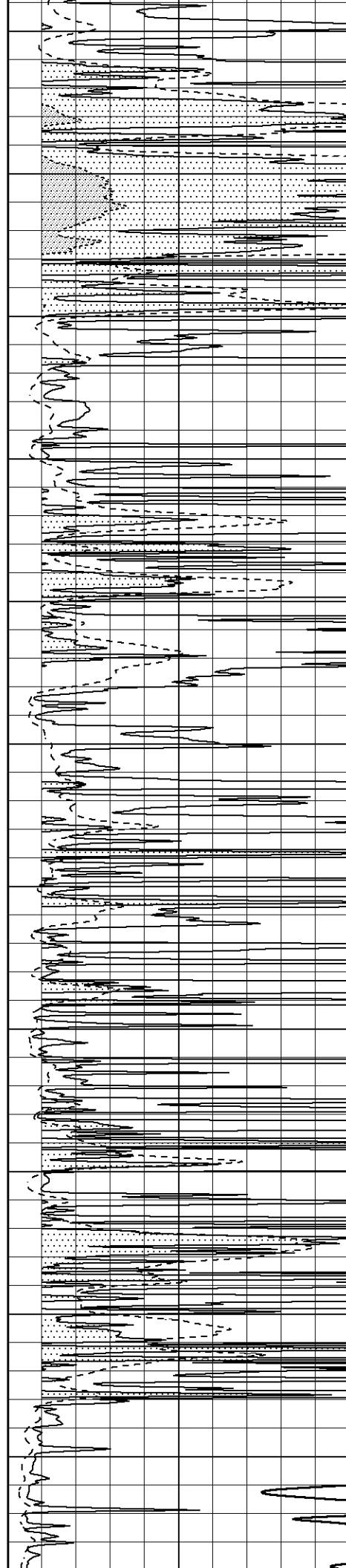


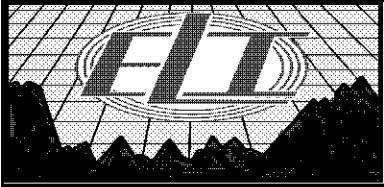
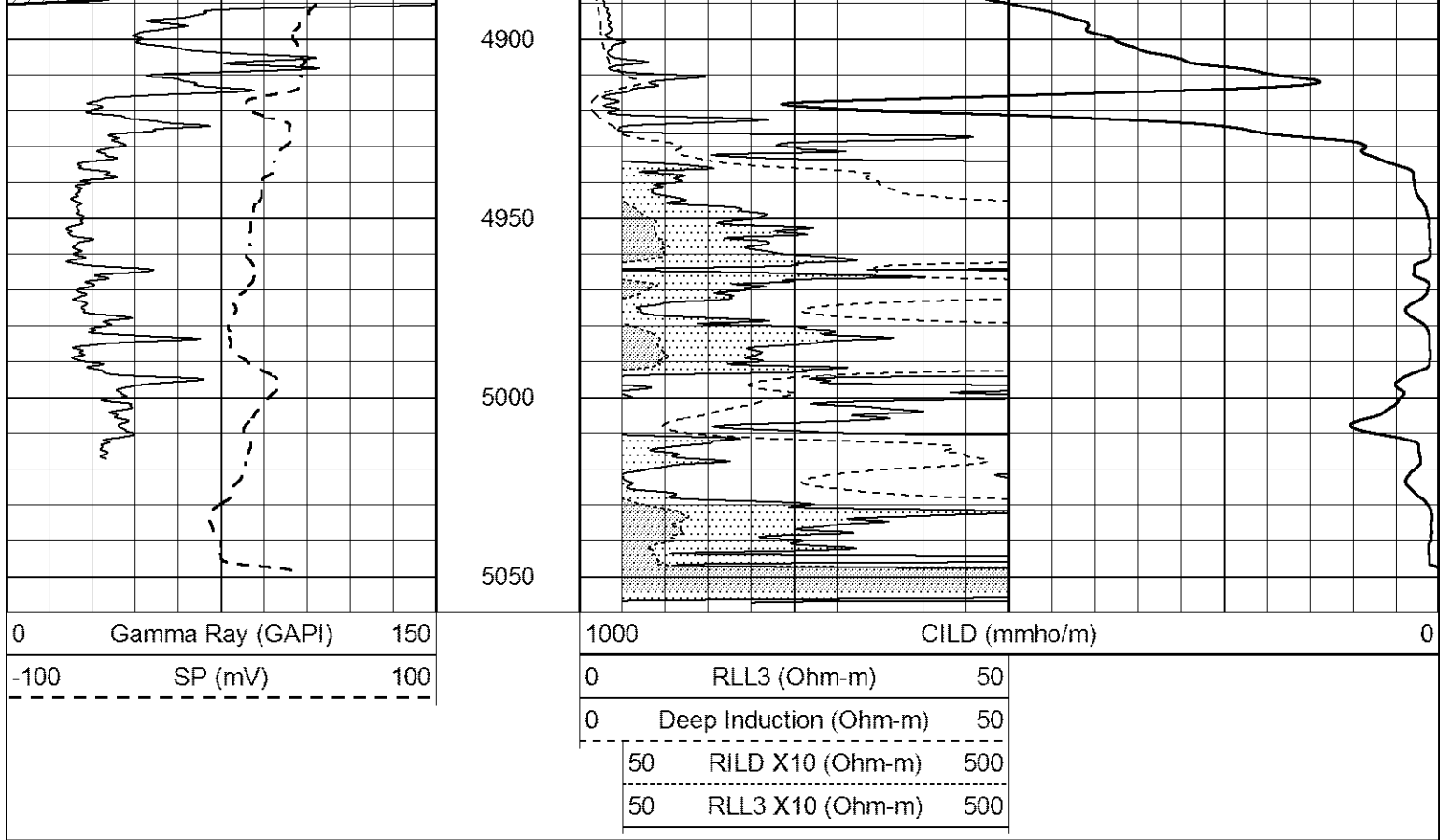
3800
3850
3900
3950
4000
4050
4100
4150
4200
4250
4300





4350
4400
4450
4500
4550
4600
4650
4700
4750
4800
4850

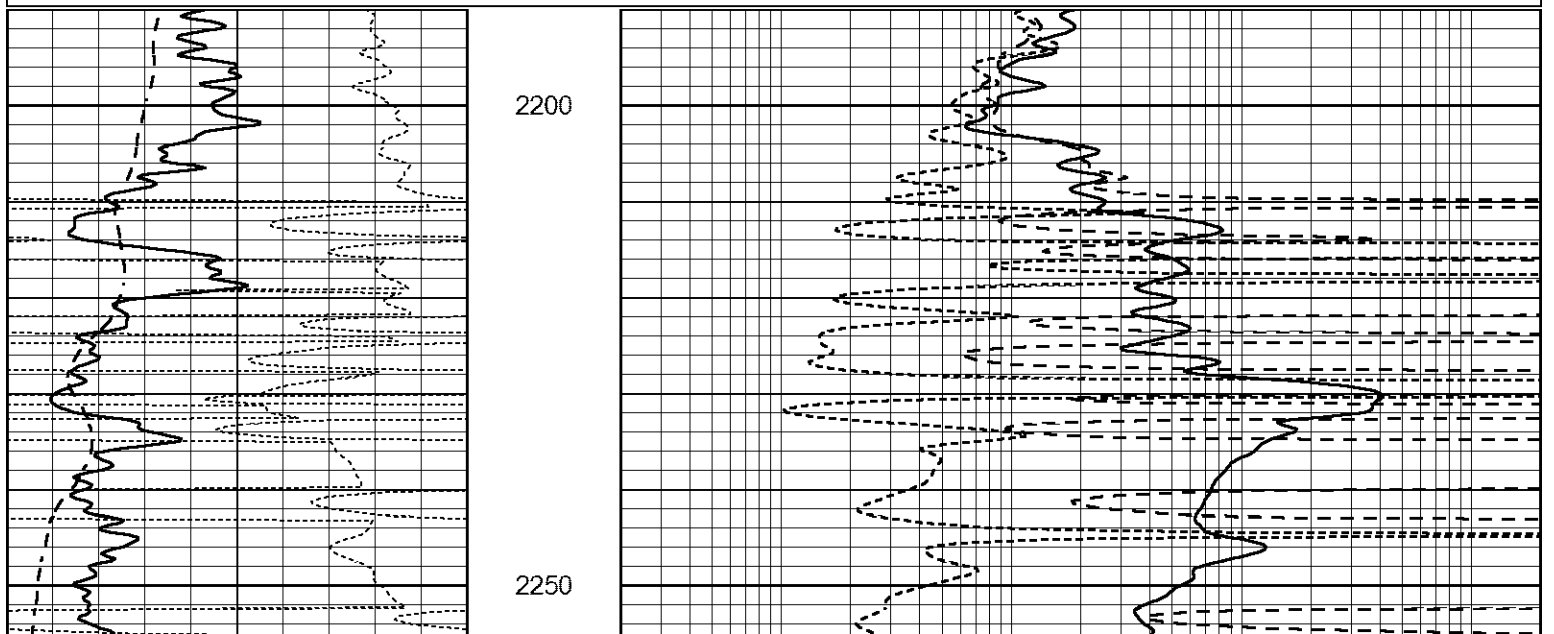


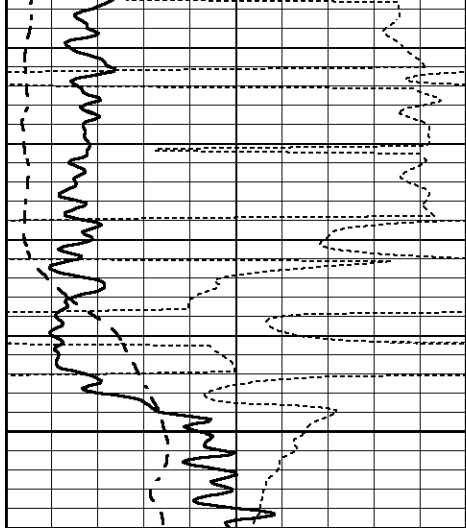


MAIN PASS

Database File 2042pe.db
 Dataset Pathname pass4DIL
 Presentation Format _dil
 Dataset Creation Mon Apr 16 00:41:59 2018
 Charted by Depth in Feet scaled 1:240

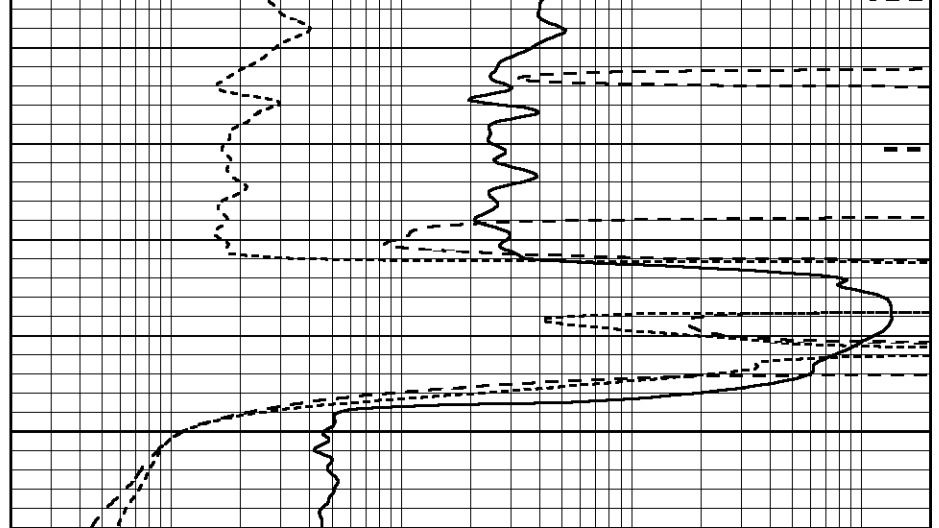
0	GAMMA RAY (GAPI)	150	0.2	SHALLOW GUARD (Ohm-m)	2000
-250	Rxo/Rt	50	0.2	MEDIUM INDUCTION (Ohm-m)	2000
-100	SP (mV)	100	0.2	DEEP INDUCTION (Ohm-m)	2000



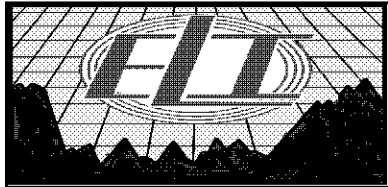


2300

0	GAMMA RAY (GAPI)	150
-250	Rxo/Rt	50
-100	SP (mV)	100



0.2	SHALLOW GUARD (Ohm-m)	2000
0.2	MEDIUM INDUCTION (Ohm-m)	2000
0.2	DEEP INDUCTION (Ohm-m)	2000

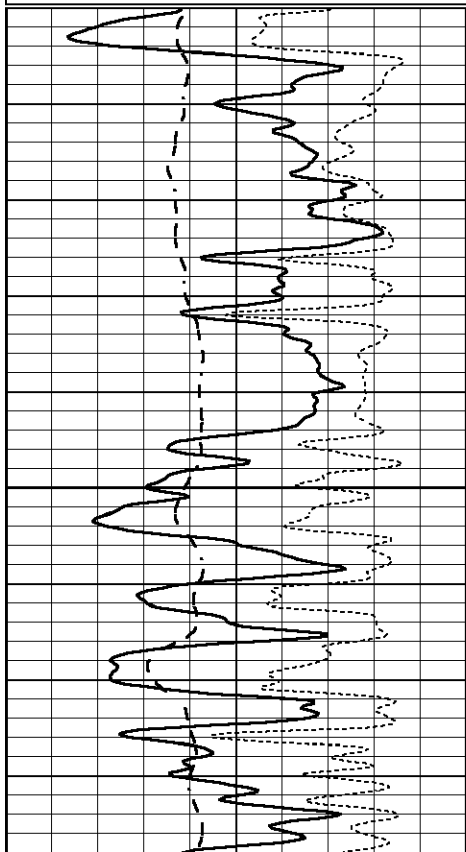


MAIN PASS

Database File 2042pe.db
 Dataset Pathname pass4DIL
 Presentation Format _dil
 Dataset Creation Mon Apr 16 00:41:59 2018
 Charted by Depth in Feet scaled 1:240

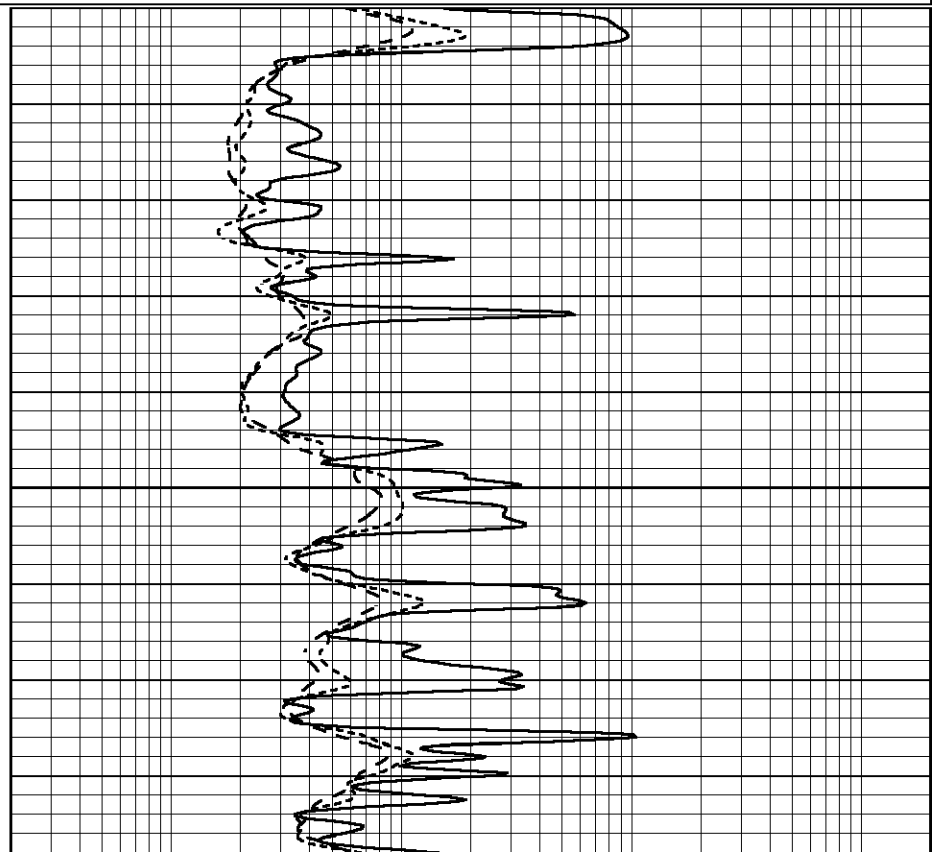
0	GAMMA RAY (GAPI)	150
-250	Rxo/Rt	50
-100	SP (mV)	100

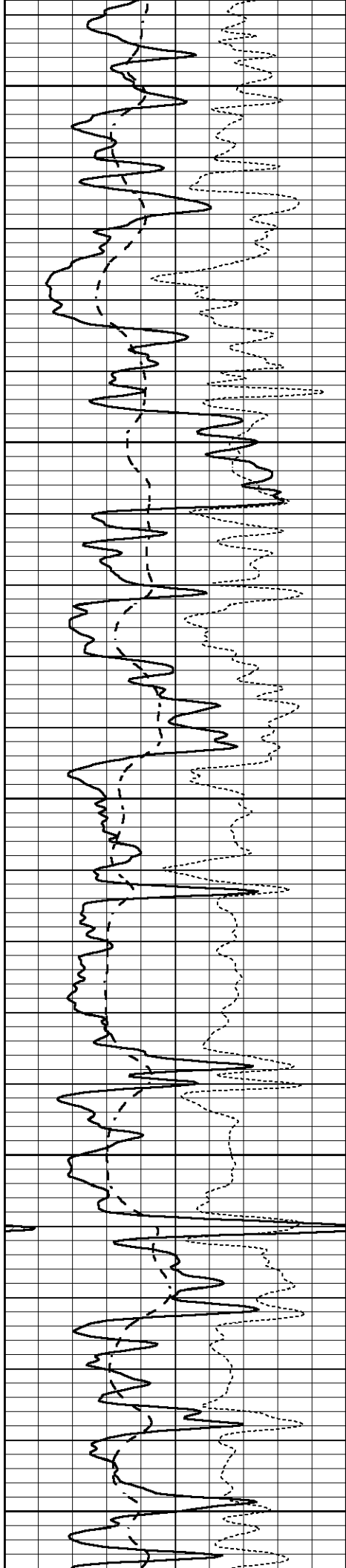
0.2	SHALLOW GUARD (Ohm-m)	2000
0.2	MEDIUM INDUCTION (Ohm-m)	2000
0.2	DEEP INDUCTION (Ohm-m)	2000



3300

3550





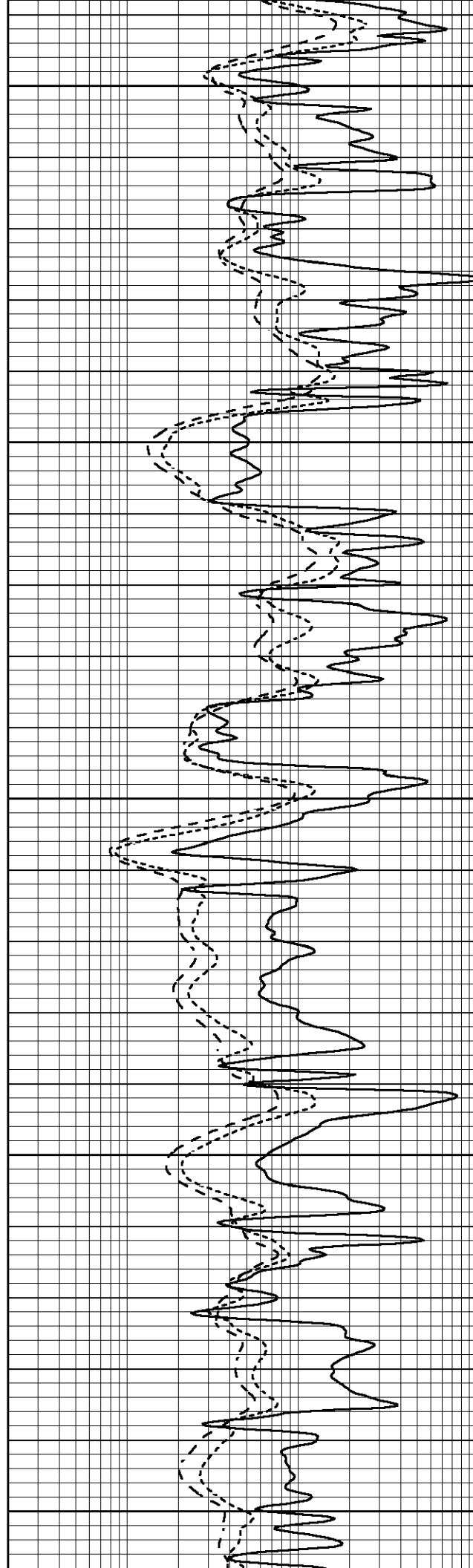
3600

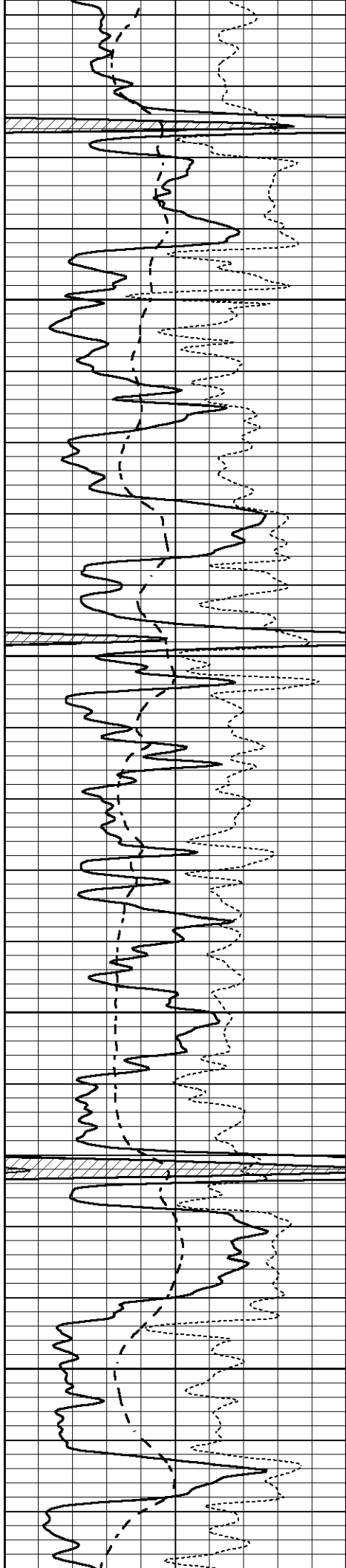
3650

3700

3750

3800



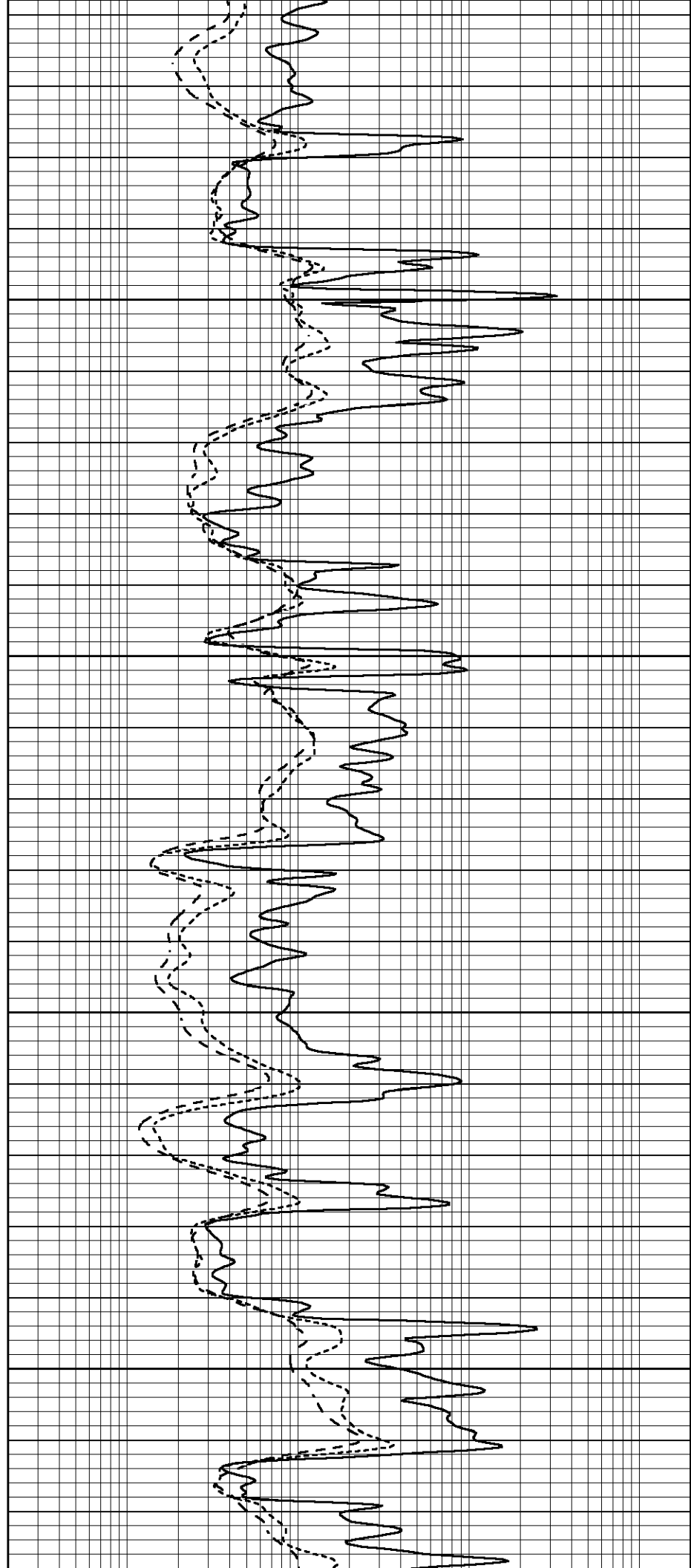


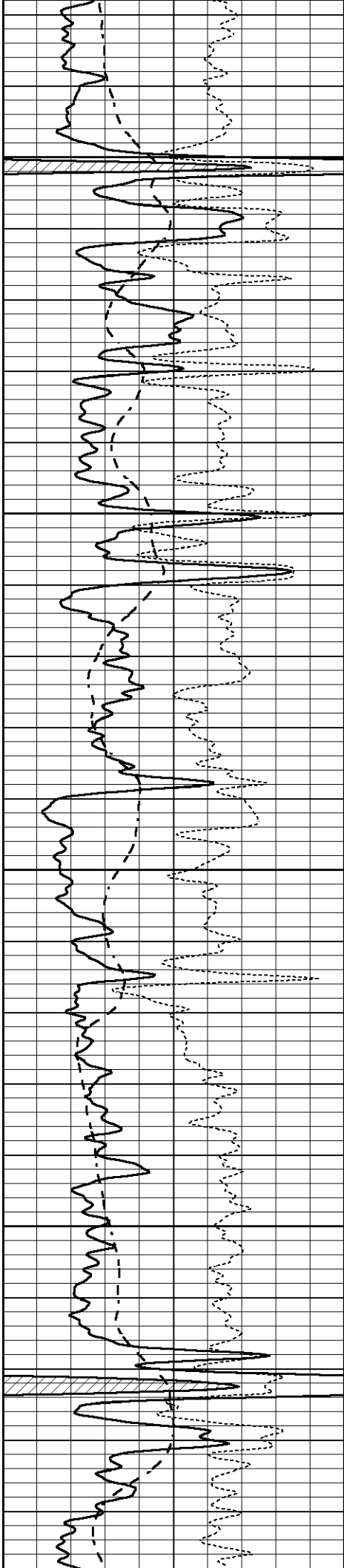
3850

3900

3950

4000



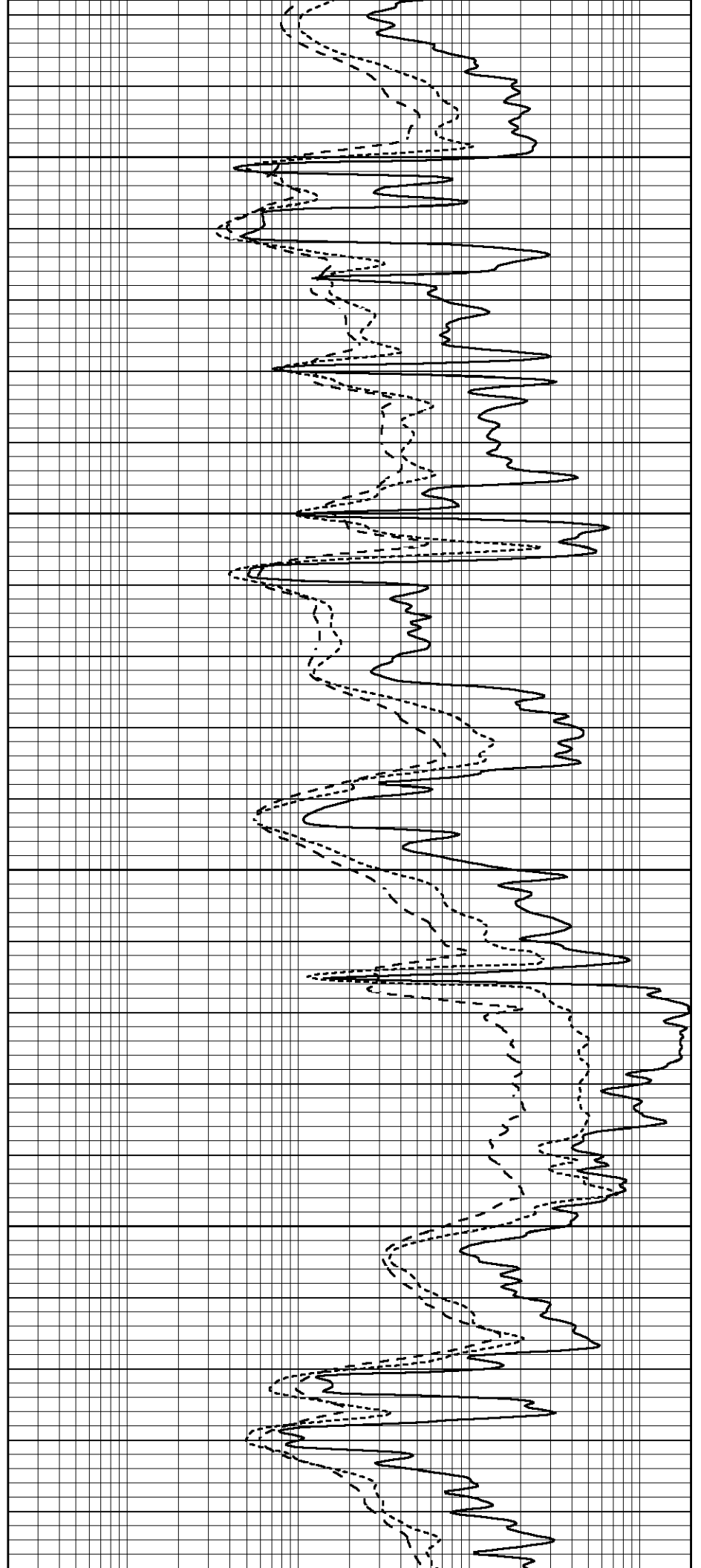


4050

4100

4150

4200



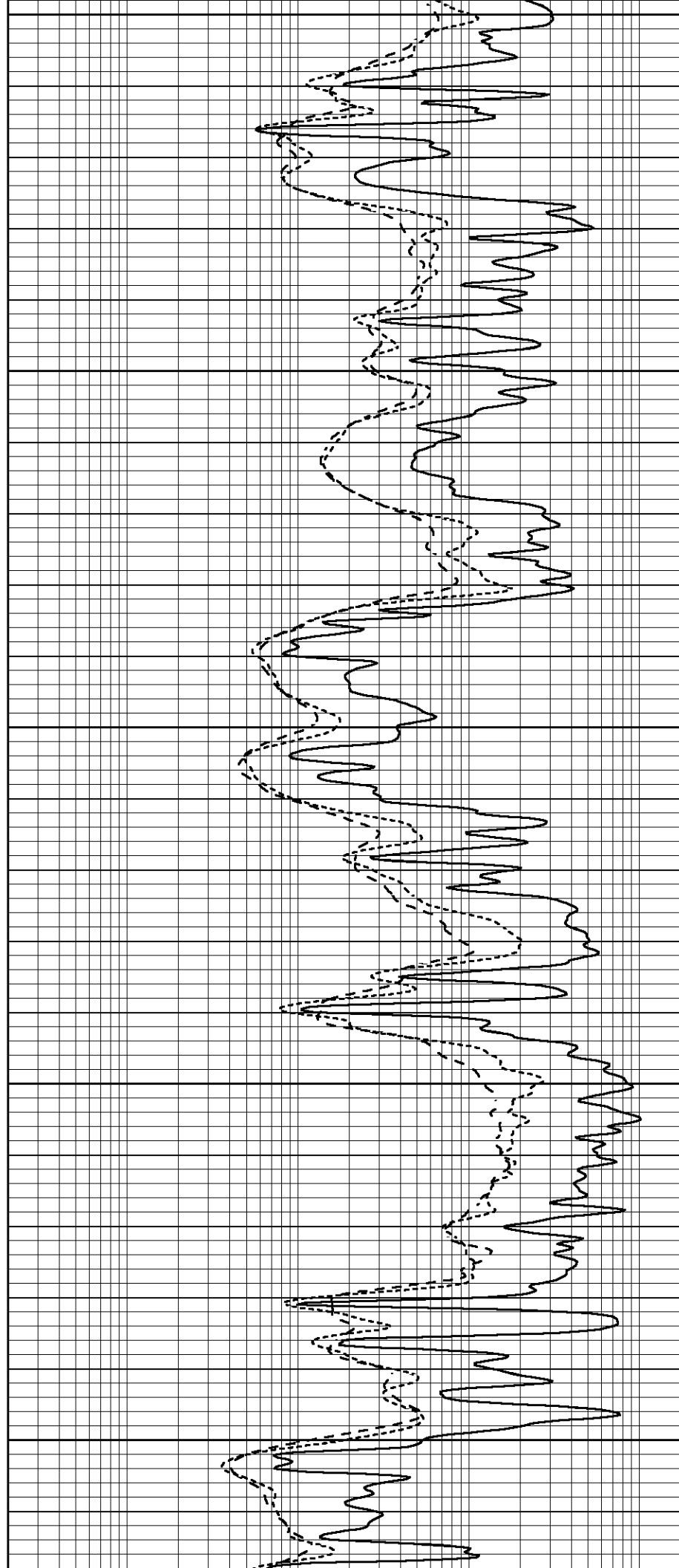
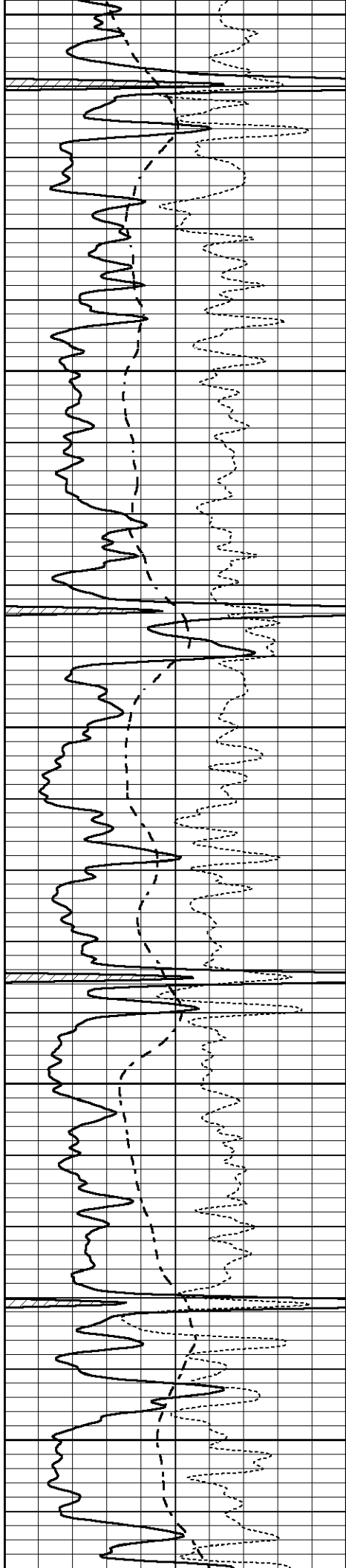
4250

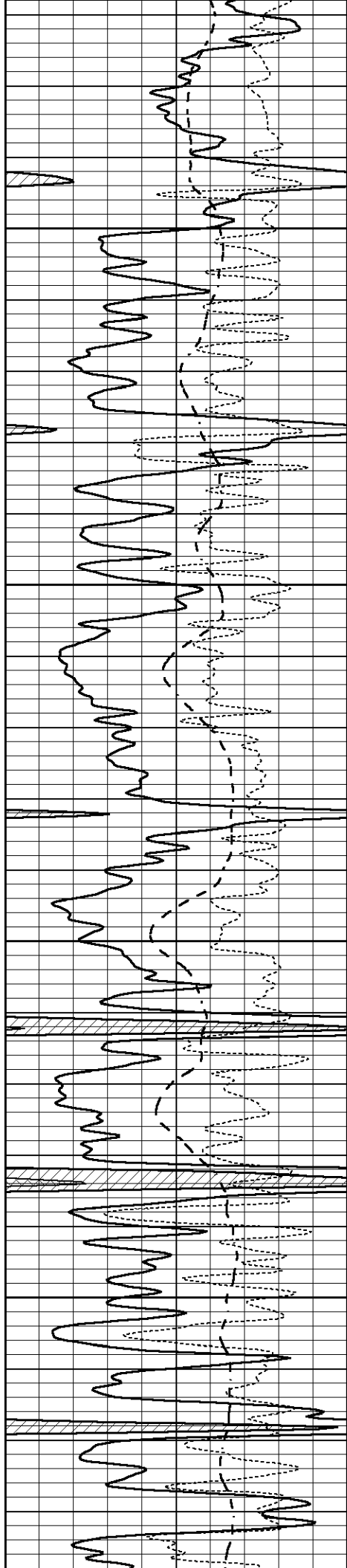
4300

4350

4400

4450



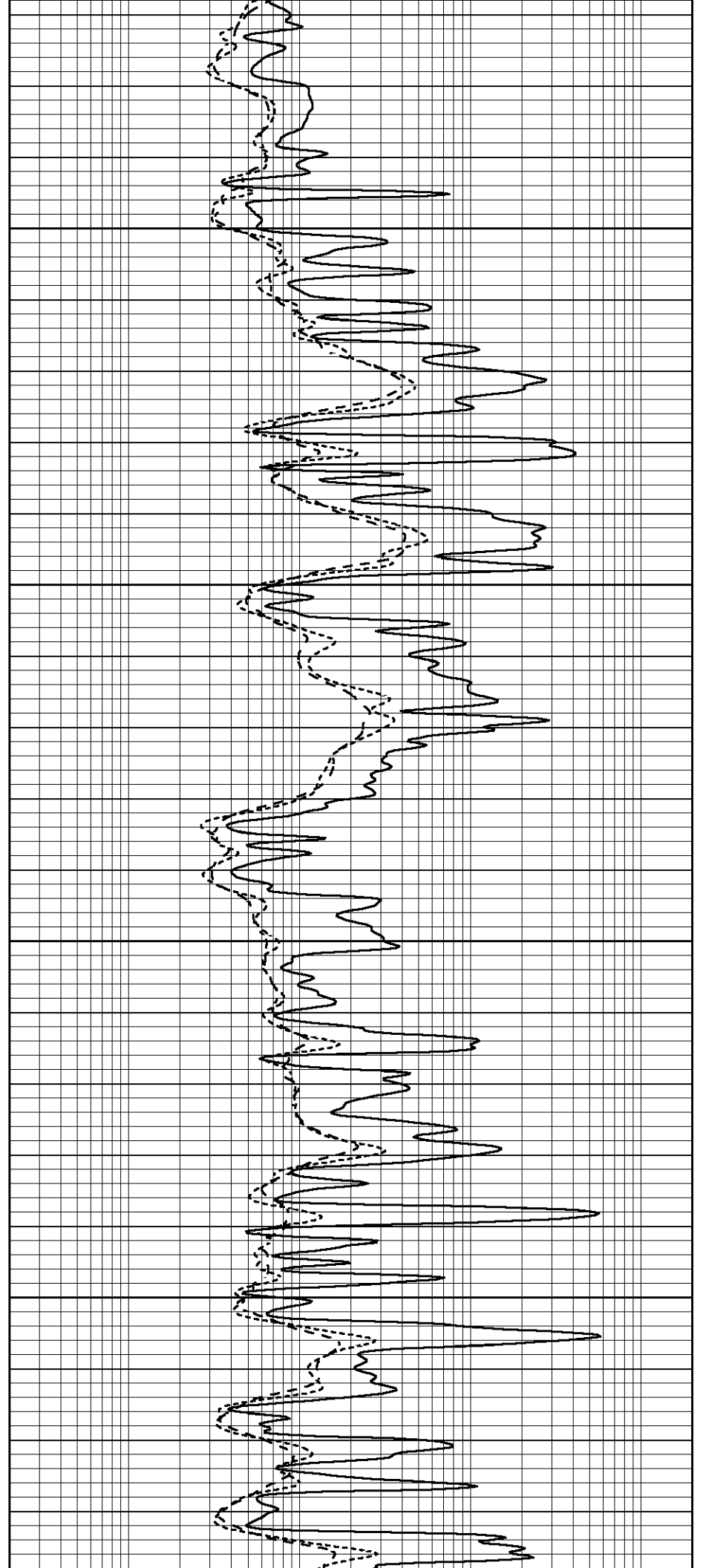


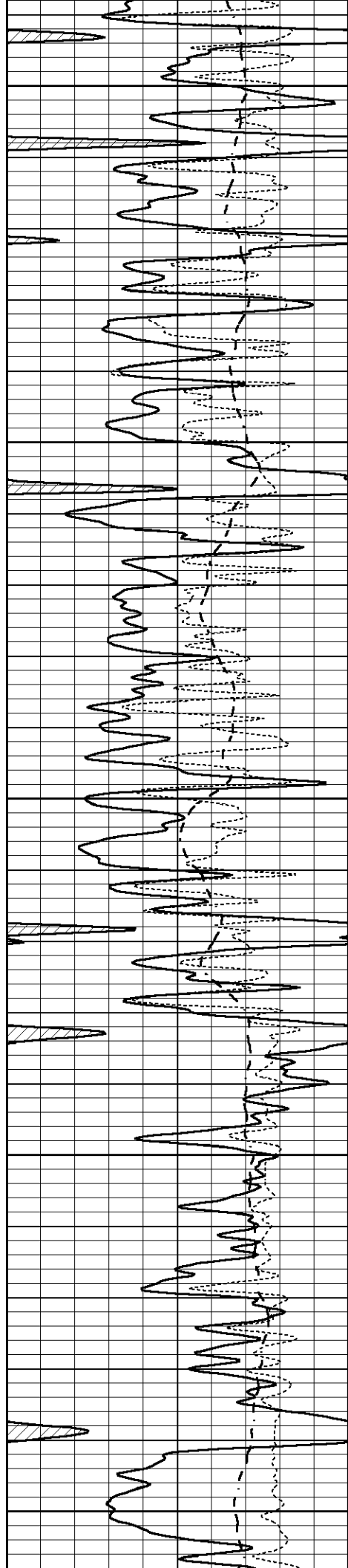
4500

4550

4600

4650





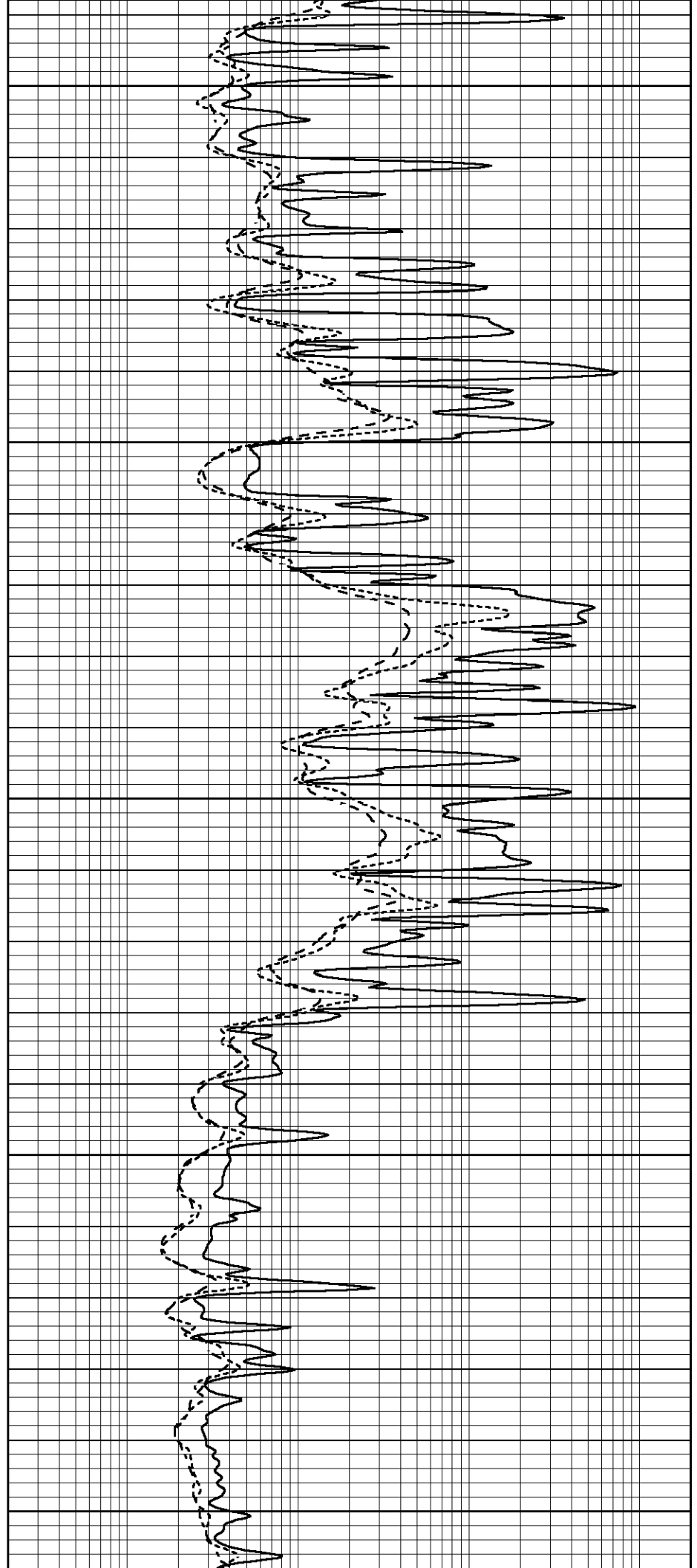
4700

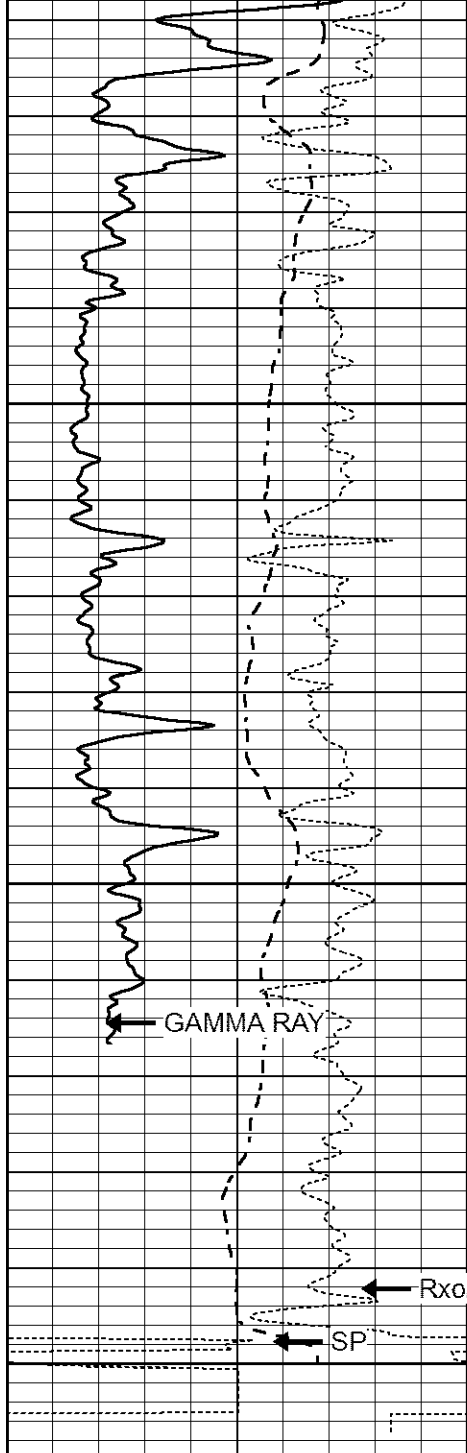
4750

4800

4850

4900





4950

5000

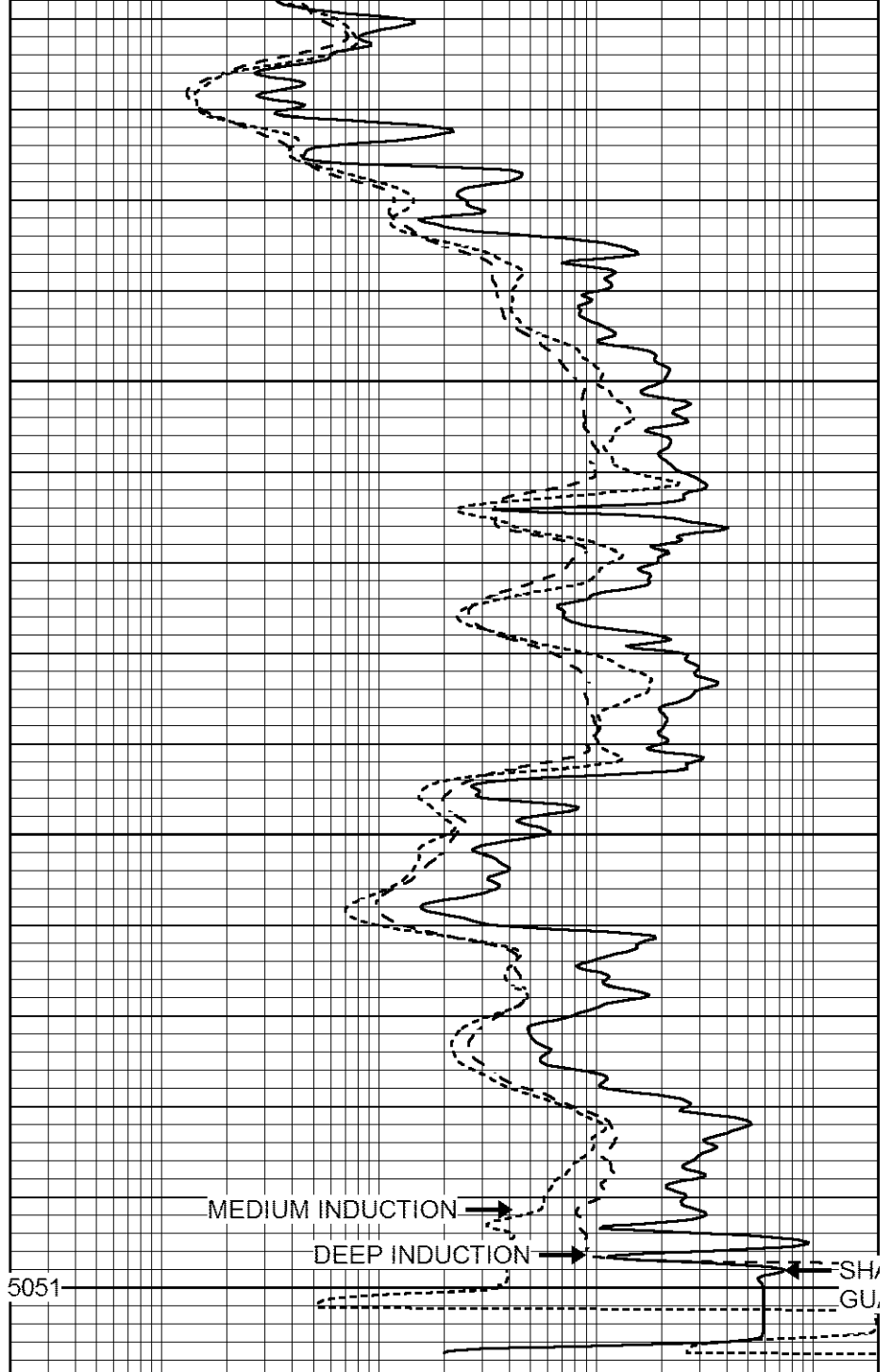
GAMMA RAY

Rxo/Rt

SP

5051LTD 5051

0	GAMMA RAY (GAPI)	150
-250	Rxo/Rt	50
-100	SP (mV)	100

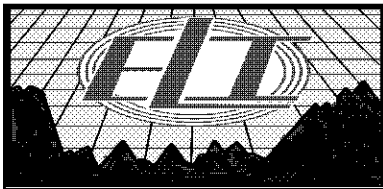


MEDIUM INDUCTION

DEEP INDUCTION

SH/GU

0.2	SHALLOW GUARD (Ohm-m)	2000
0.2	MEDIUM INDUCTION (Ohm-m)	2000
0.2	DEEP INDUCTION (Ohm-m)	2000



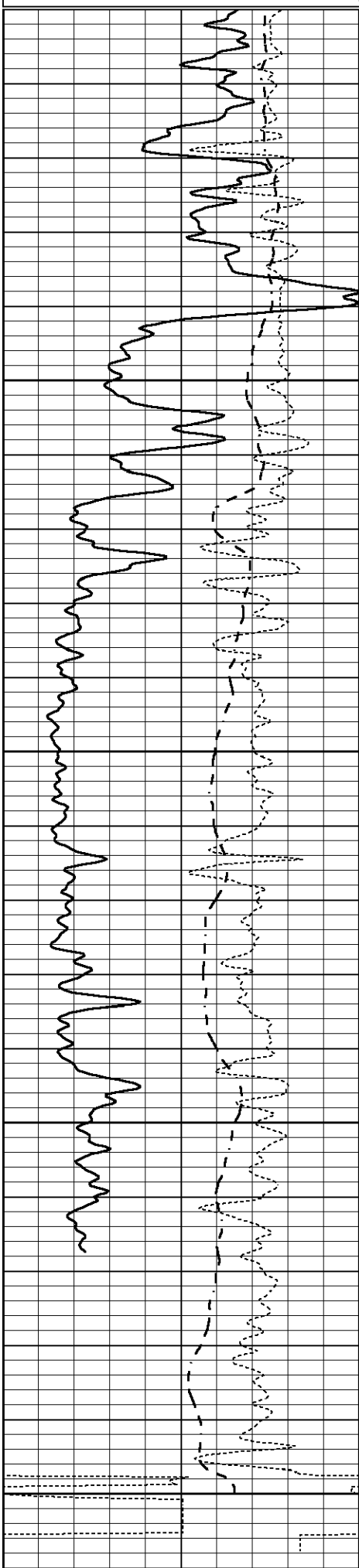
REPEAT SECTION

Database File 2042pe.db
 Dataset Pathname pass3.1
 Presentation Format _dil
 Dataset Creation Sun Apr 15 23:16:38 2018
 Charted by Depth in Feet scaled 1:240

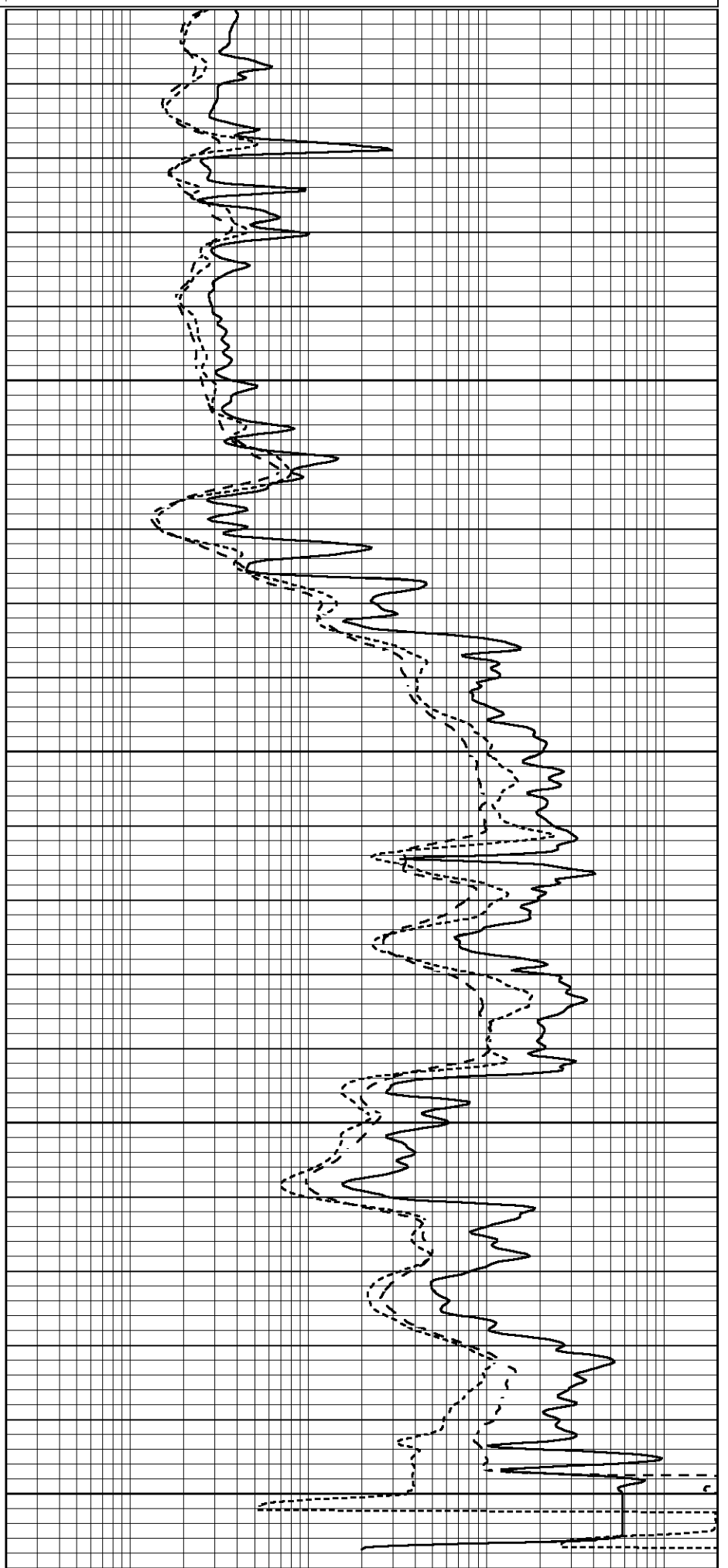
0	GAMMA RAY (GAPI)	150
-250	Rxo/Rt	50

0.2	SHALLOW GUARD (Ohm-m)	2000
0.2	MEDIUM INDUCTION (Ohm-m)	2000

250
-100 SP (mV) 100



0.2 2000
0.2 DEEP INDUCTION (Ohm-m) 2000



0	GAMMA RAY (GAPI)	150
-250	Rxo/Rt	50
-100	SP (mV)	100

0.2	SHALLOW GUARD (Ohm-m)	2000
0.2	MEDIUM INDUCTION (Ohm-m)	2000
0.2	DEEP INDUCTION (Ohm-m)	2000