



MICRO LOG

Company LARIO OIL & GAS COMPANY  
Well LANG A #1-12  
Field LANGWICH  
County WICHITA State KANSAS

Location: API #: 15-203-20330-00-00  
660' FSL & 4620' FEL  
SEC 12 TWP 20S RGE 35W  
Permanent Datum GROUND LEVEL Elevation 3127  
Log Measured From KELLY BUSHING 11' A.G.L.  
Drilling Measured From KELLY BUSHING  
Other Services CDL/CNL/DIL SONIC  
Elevation K.B. 3138  
D.F. 3136  
G.L. 3127

|                              |                 |
|------------------------------|-----------------|
| Date                         | 4/15/18         |
| Run Number                   | TWO             |
| Depth Driller                | 5050            |
| Depth Logger                 | 5051            |
| Bottom Logged Interval       | 5031            |
| Top Log Interval             | 3500            |
| Casing Driller               | 8 5/8" @ 351    |
| Casing Logger                | 351             |
| Bit Size                     | 7 7/8           |
| Type Fluid in Hole           | CHEMICAL MUD    |
| Density / Viscosity          | 9.2/58          |
| PH / Fluid Loss              | 10.0/8.8        |
| Source of Sample             | FLOWLINE        |
| Rm @ Meas. Temp              | 1.8 @ 62F       |
| Rmt @ Meas. Temp             | 1.35 @ 62F      |
| Rmc @ Meas. Temp             | 2.16 @ 62F      |
| Source of Rmf / Rmc          | MEASUREMENT     |
| Rm @ BHT                     | .88 @ 126F      |
| Time Circulation Stopped     | 2 HOURS         |
| Time Logger on Bottom        | ////            |
| Maximum Recorded Temperature | 126F            |
| Equipment Number             | 3802            |
| Location                     | HAYS, KANSAS    |
| Recorded By                  | GUS PFANENSTIEL |
| Witnessed By                 | TIM LAUER       |

<<< Fold Here >>>

All interpretations are opinions based on inferences from electrical or other measurements and we cannot and do not guarantee the accuracy or correctness of any interpretation, and we shall not, except in the case of gross or willful negligence on our part, be liable or responsible for any loss, costs, damages, or expenses incurred or sustained by anyone resulting from any interpretation made by any of our officers, agents or employees. These interpretations are also subject to our general terms and conditions set out in our current Price Schedule.

Comments

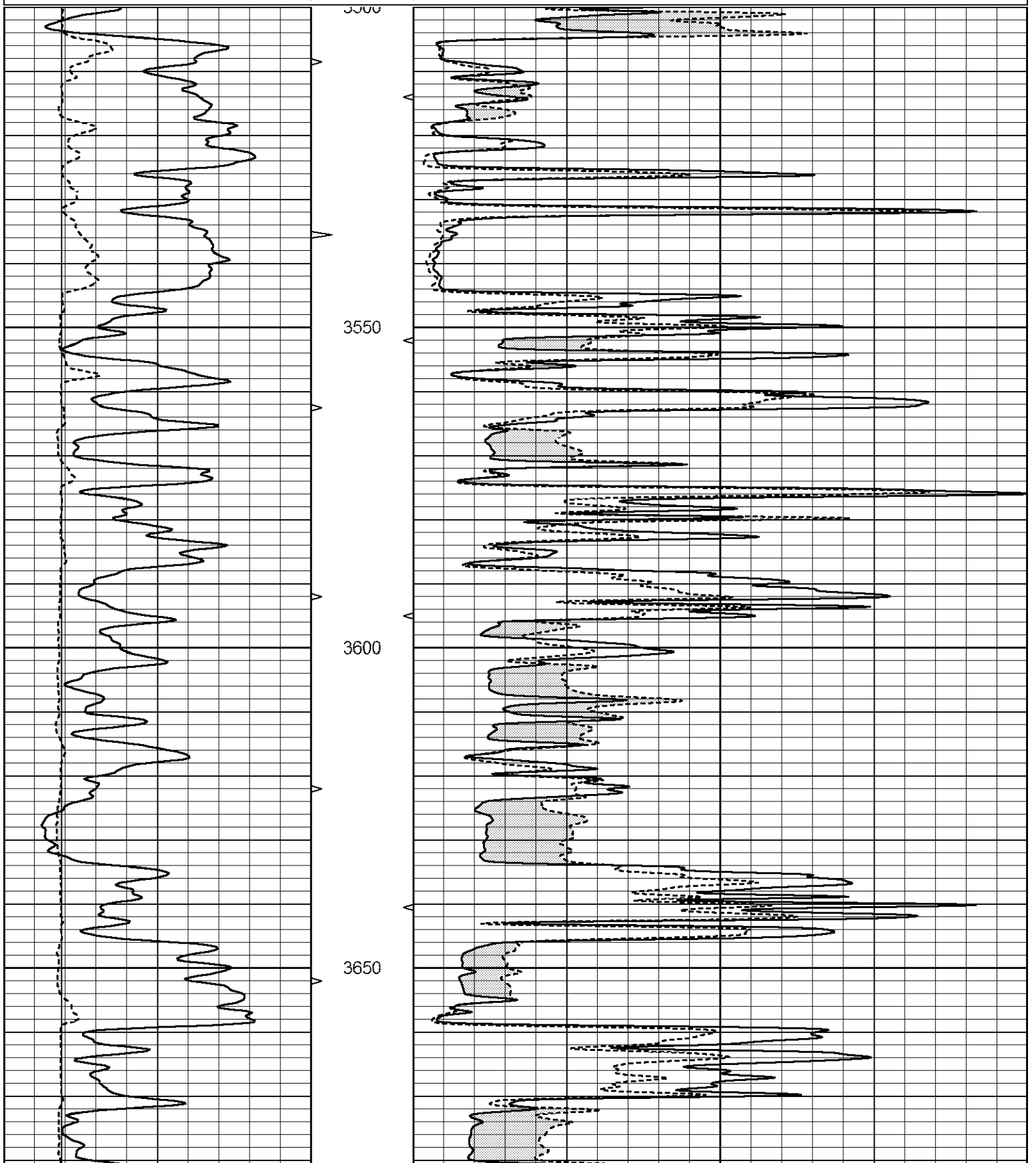
THANK YOU FOR USING ELI WIRELINE SERVICES, HAYS, KS. ( 785 ) 628-6395  
DIRECTIONS  
WEST OF SCOTT CITY TO COUNTY LINE 11 SOUTH,  
1 WEST, NORTH INTO.

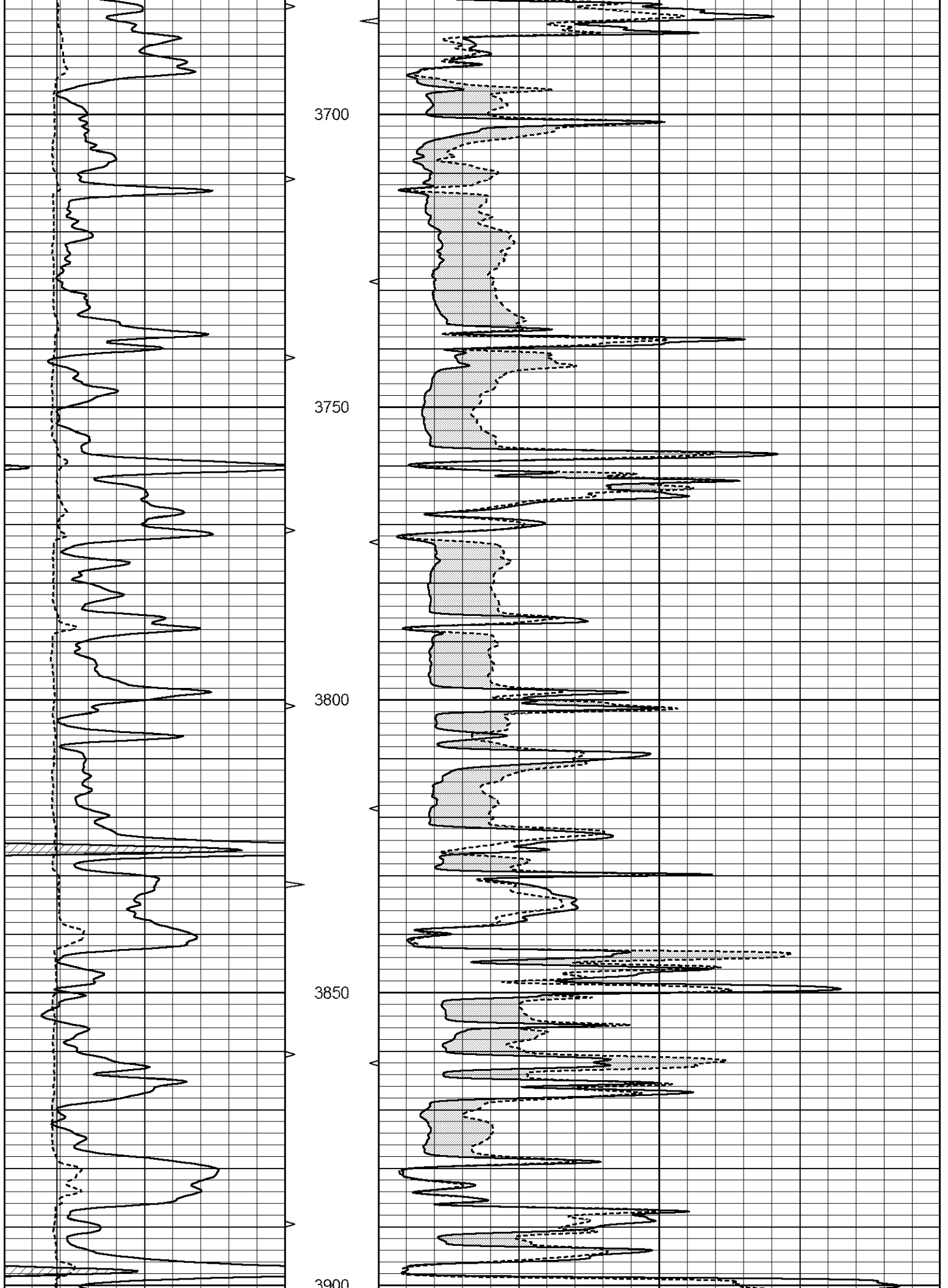


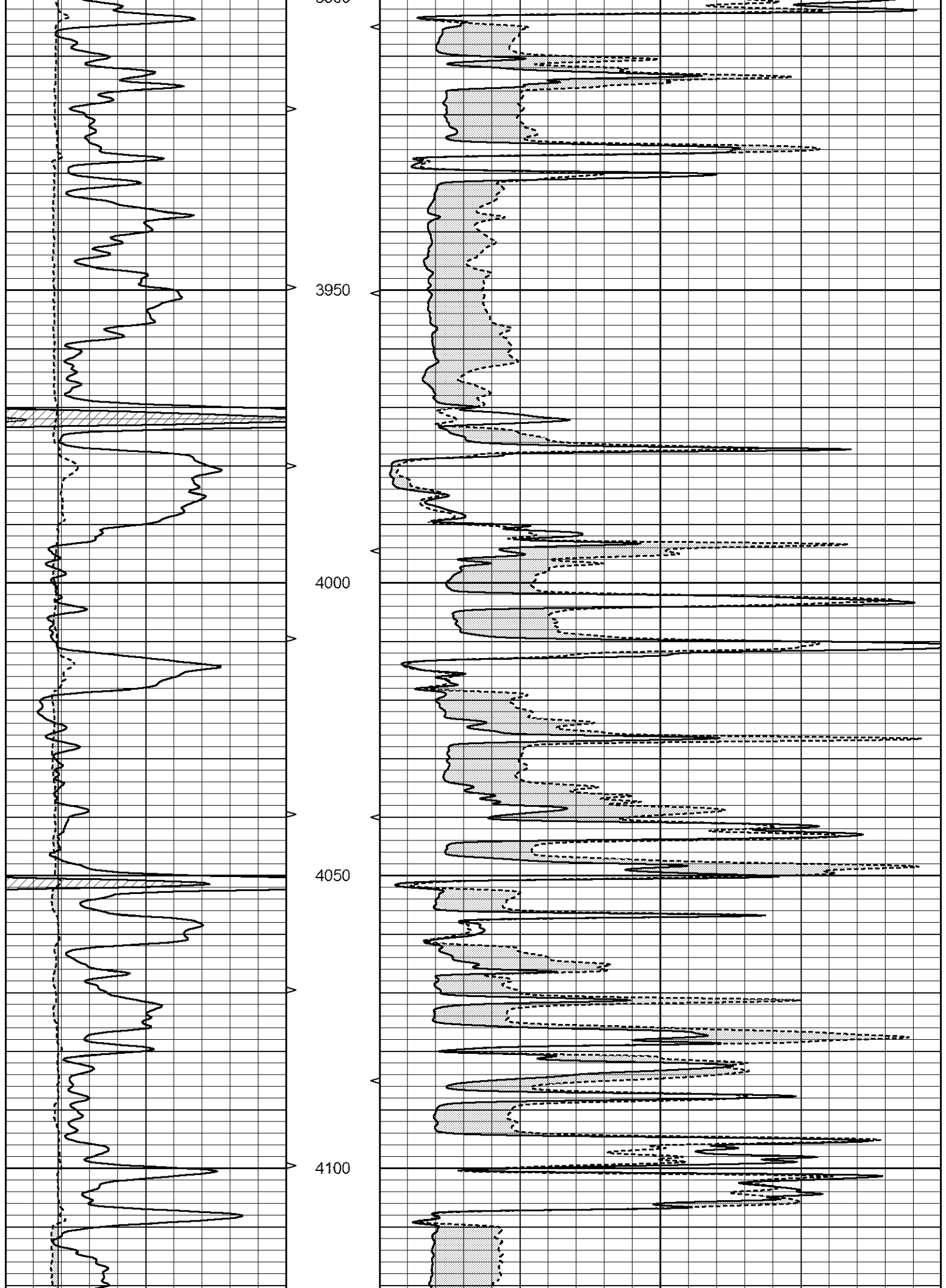
MAIN PASS

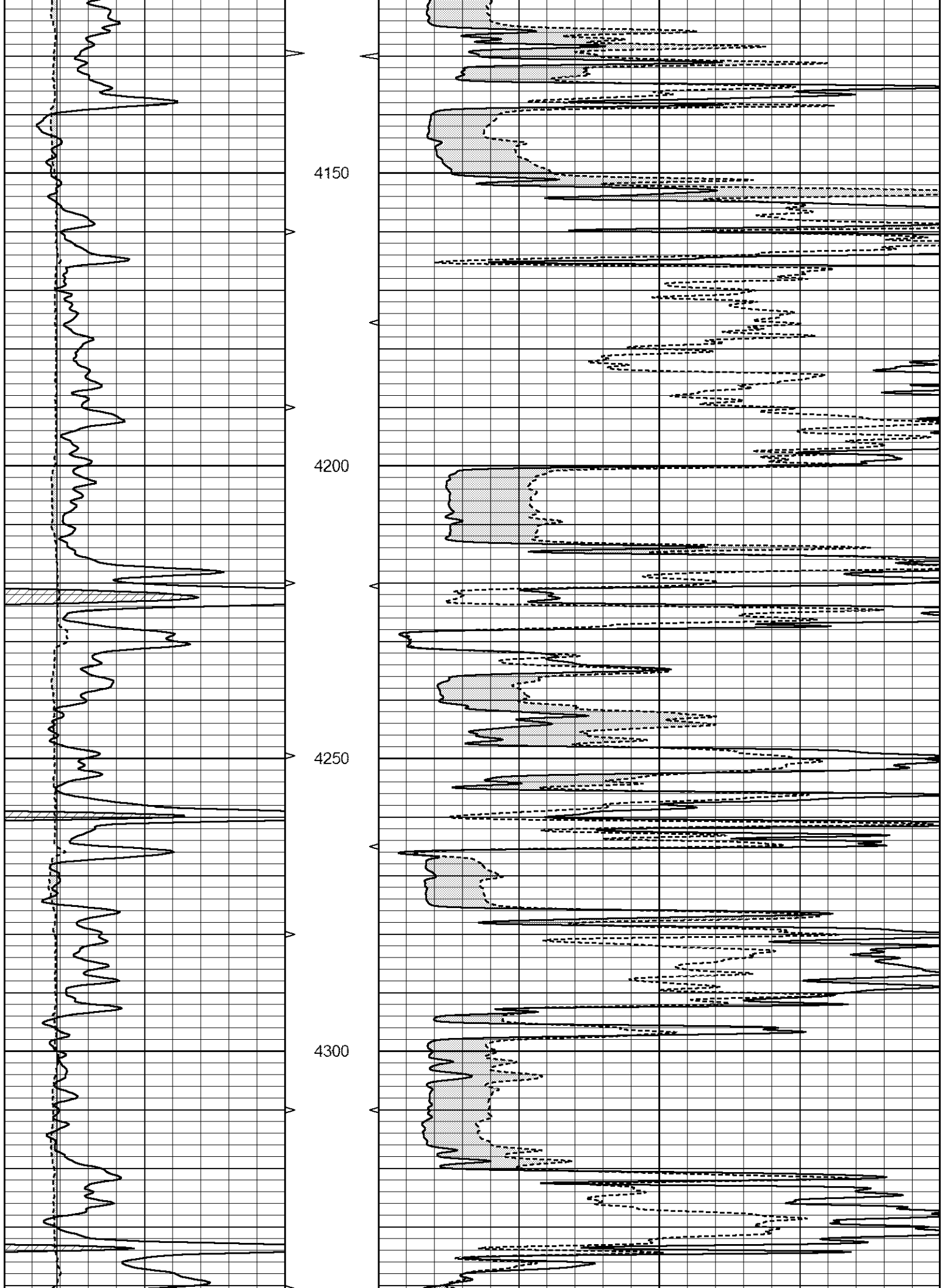
Database File 2042pe.db  
 Dataset Pathname pass8MAIN  
 Presentation Format \_micro  
 Dataset Creation Mon Apr 16 02:59:37 2018  
 Charted by Depth in Feet scaled 1:240

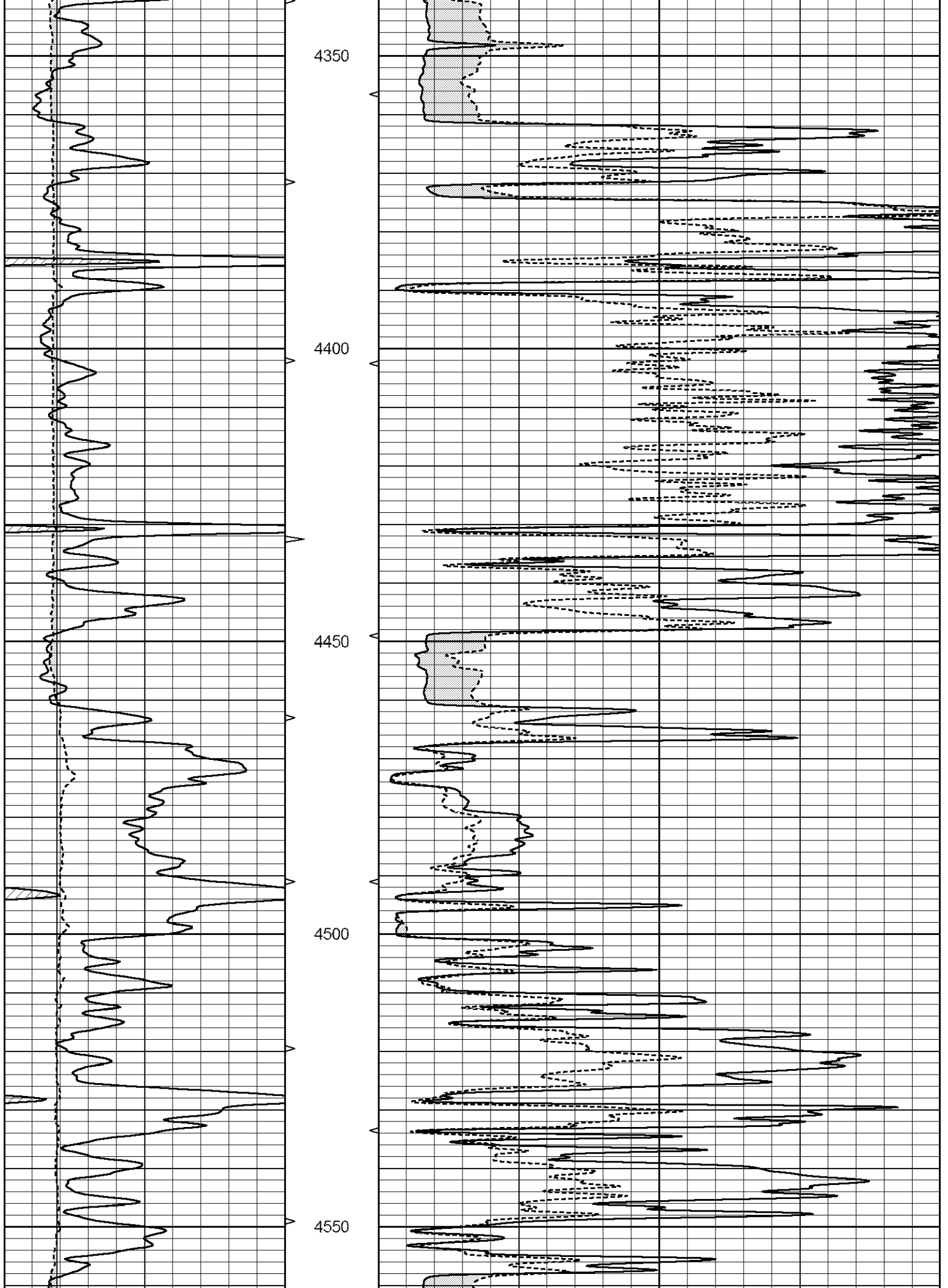
|   |                  |     |          |    |                |    |
|---|------------------|-----|----------|----|----------------|----|
| 0 | GAMMA RAY (GAPI) | 150 | ABHV     | 0  | MEL1.5 (Ohm-m) | 40 |
| 6 | CALIPER (in)     | 16  | 10 (ft3) | 0  | MEL2.0 (Ohm-m) | 40 |
|   |                  |     | TBHV     |    |                |    |
|   |                  |     | 0 (ft3)  | 10 |                |    |

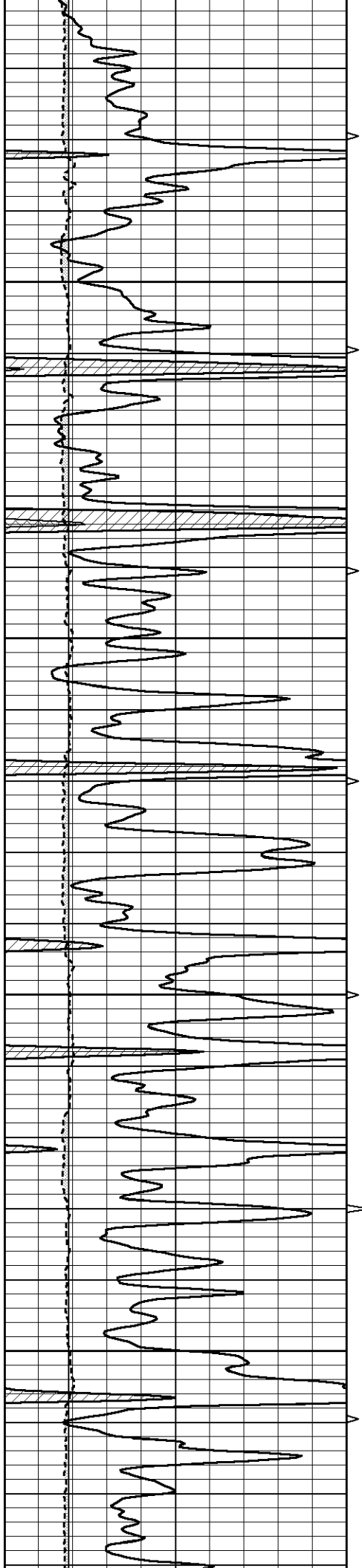










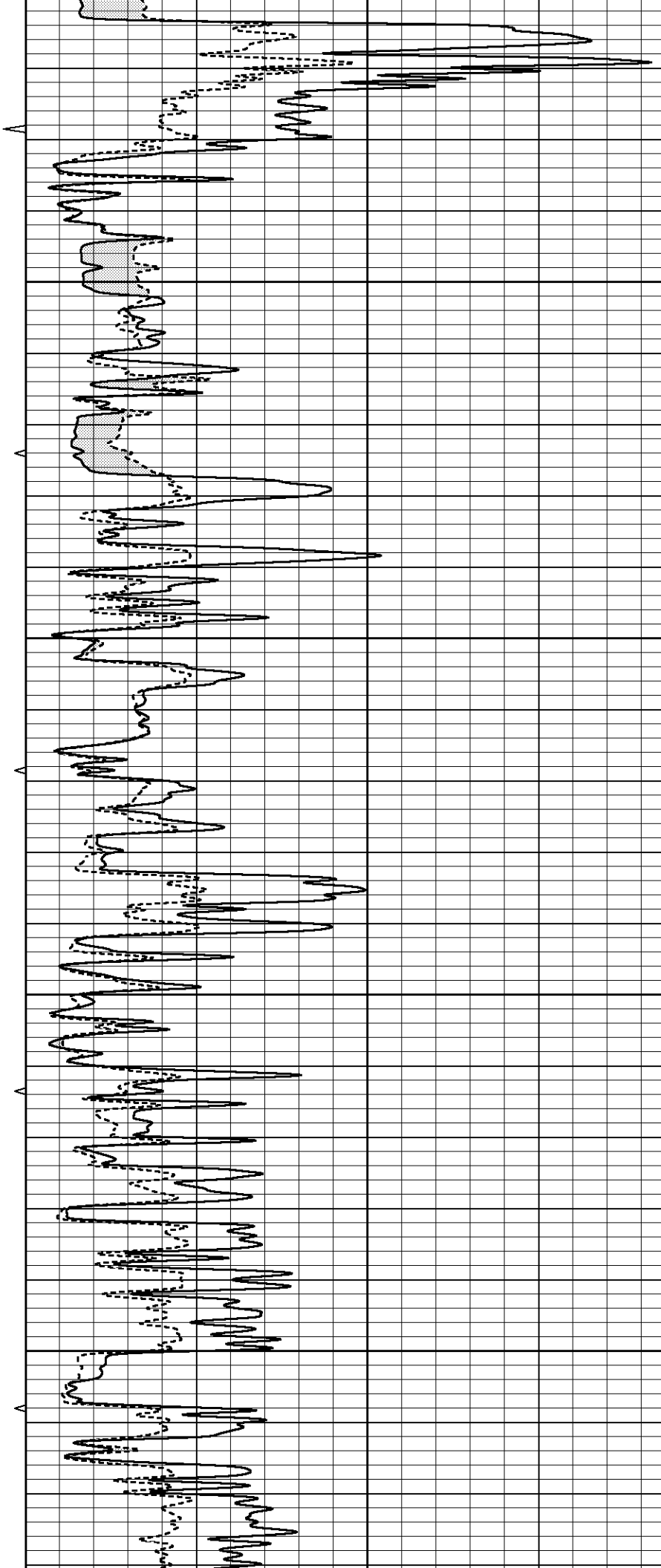


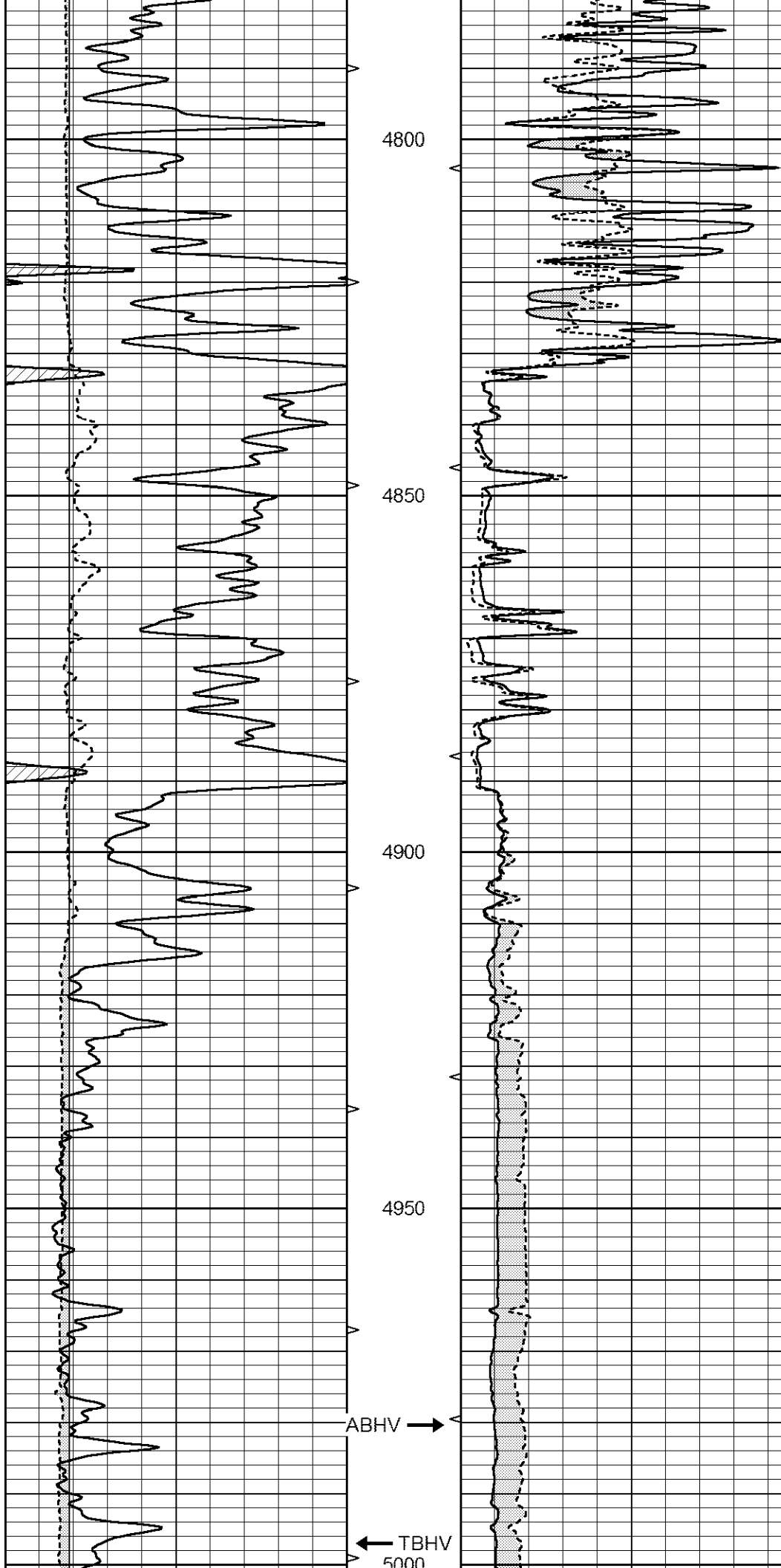
4600

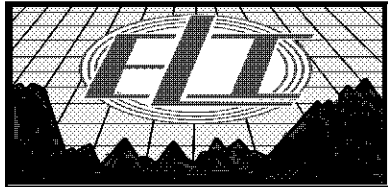
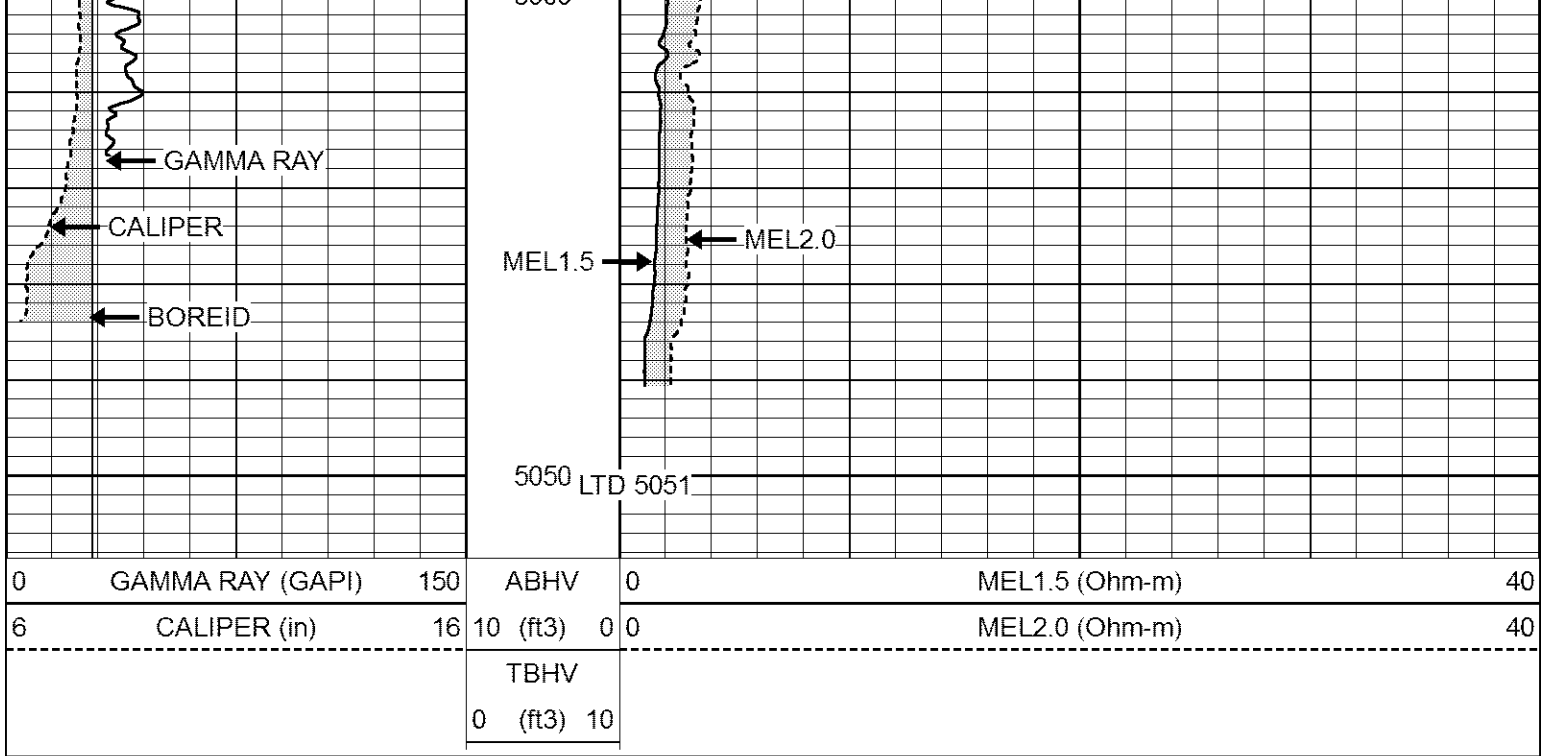
4650

4700

4750



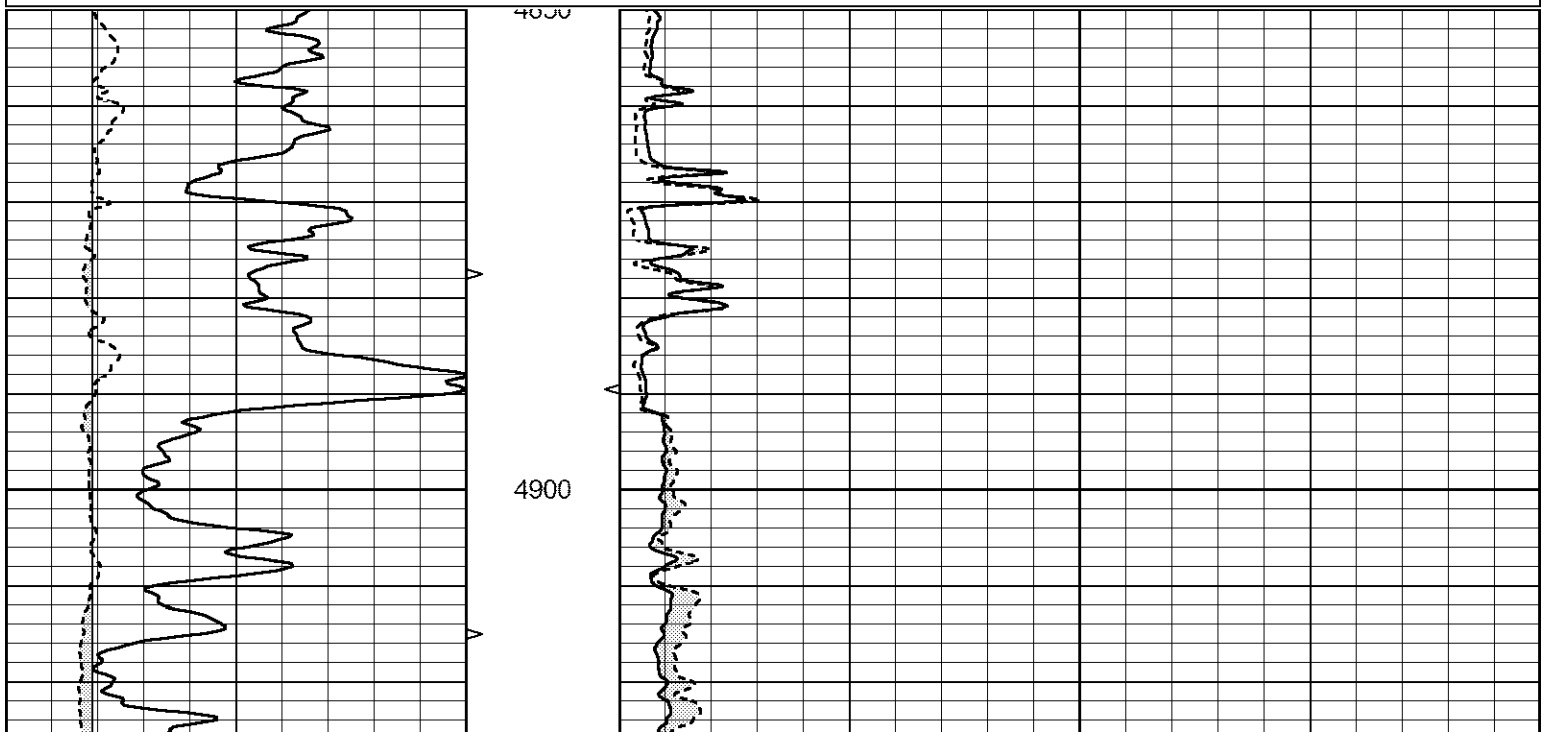


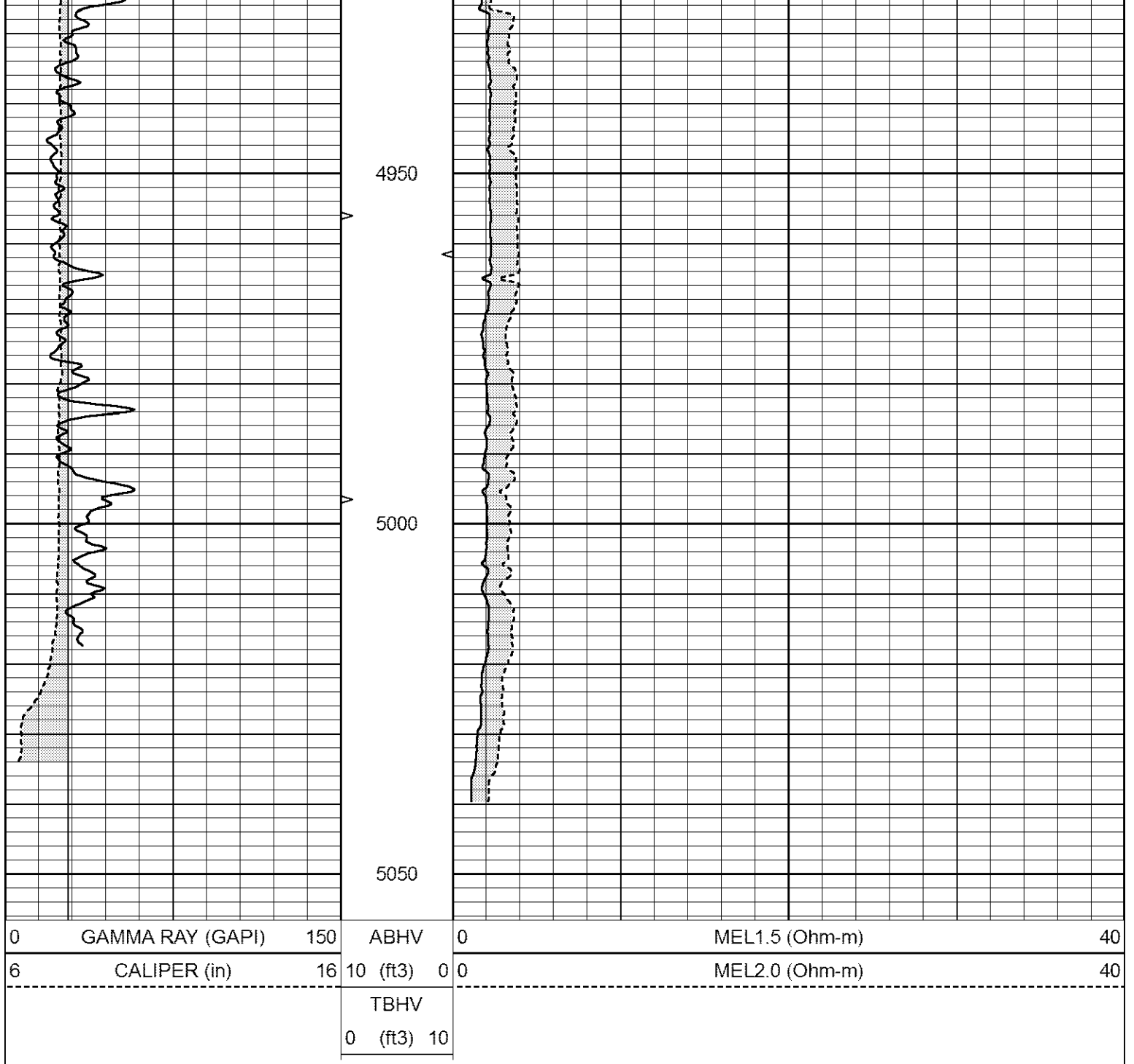


# REPEAT SECTION

Database File 2042pe.db  
 Dataset Pathname pass7REPEAT  
 Presentation Format \_micro  
 Dataset Creation Mon Apr 16 02:15:37 2018  
 Charted by Depth in Feet scaled 1:240

|   |                  |     |          |     |                |    |
|---|------------------|-----|----------|-----|----------------|----|
| 0 | GAMMA RAY (GAPI) | 150 | ABHV     | 0   | MEL1.5 (Ohm-m) | 40 |
| 6 | CALIPER (in)     | 16  | 10 (ft3) | 0 0 | MEL2.0 (Ohm-m) | 40 |
|   |                  |     | TBHV     |     |                |    |
|   |                  |     | 0 (ft3)  | 10  |                |    |





|   |                  |     |          |    |                |    |
|---|------------------|-----|----------|----|----------------|----|
| 0 | GAMMA RAY (GAPI) | 150 | ABHV     | 0  | MEL1.5 (Ohm-m) | 40 |
| 6 | CALIPER (in)     | 16  | 10 (ft3) | 0  | MEL2.0 (Ohm-m) | 40 |
|   |                  |     | TBHV     |    |                |    |
|   |                  |     | 0 (ft3)  | 10 |                |    |