



BOREHOLE VOLUME LOG

Company RANEY OIL COMPANY, LLC.
 Well SHORTER RANCH #1
 Field CABIN VALLEY
 County COWLEY
 State KANSAS

Company RANEY OIL COMPANY, LLC.
 Well SHORTER RANCH #1
 Field CABIN VALLEY
 County COWLEY State KANSAS

Location: API # : 15-035-24713-0000
 1810' FNL & 2280' FEL
 SEC 31 TWP 33S RGE 6E
 Permanent Datum GROUND LEVEL Elevation 1267
 Log Measured From KELLY BUSHING 8' A.G.L.
 Drilling Measured From KELLY BUSHING
 Other Services CDL/CNL/DIL ML
 Elevation K.B. 1275
 D.F. 1273
 G.L. 1267

Date	2/10/20
Run Number	TWO
Depth Driller	3500
Depth Logger	3500
Bottom Logged Interval	3490
Top Log Interval	00
Casing Driller	8 5/8" @ 303
Casing Logger	303
Bit Size	7 7/8"
Type Fluid in Hole	CHEMICAL MUD
Density / Viscosity	9.4/50
pH / Fluid Loss	9.5/7.4
Source of Sample	FLOWLINE
Rm @ Meas. Temp	1.2 @ 60F
Rmt @ Meas. Temp	.90 @ 60F
Rmc @ Meas. Temp	1.44 @ 60F
Source of Rmf / Rmc	MEASURED
Rm @ BHT	.64 @ 112F
Time Circulation Stopped	2 HOURS
Time Logger on Bottom	///
Maximum Recorded Temperature	112F
Equipment Number	1523
Location	HAYS, KANSAS
Recorded By	GUS PFANENSTIEL
Witnessed By	ROGER MARTIN

<<< Fold Here >>>

All interpretations are opinions based on inferences from electrical or other measurements and we cannot and do not guarantee the accuracy or correctness of any interpretation, and we shall not, except in the case of gross or willful negligence on our part, be liable or responsible for any loss, costs, damages, or expenses incurred or sustained by anyone resulting from any interpretation made by any of our officers, agents or employees. These interpretations are also subject to our general terms and conditions set out in our current Price Schedule.

Comments

THANK YOU FOR USING ELI WIRELINE, HAYS, KS. (785) 628-6395

DIRECTIONS
 WINFIELD E ON 160 HWY TO 151 RD, SOUTH TO 212 RD., E TO 181 RD.,
 SOUTH 3 MILES, E 1 MILE, 2ND GATE, NORTH INTO.



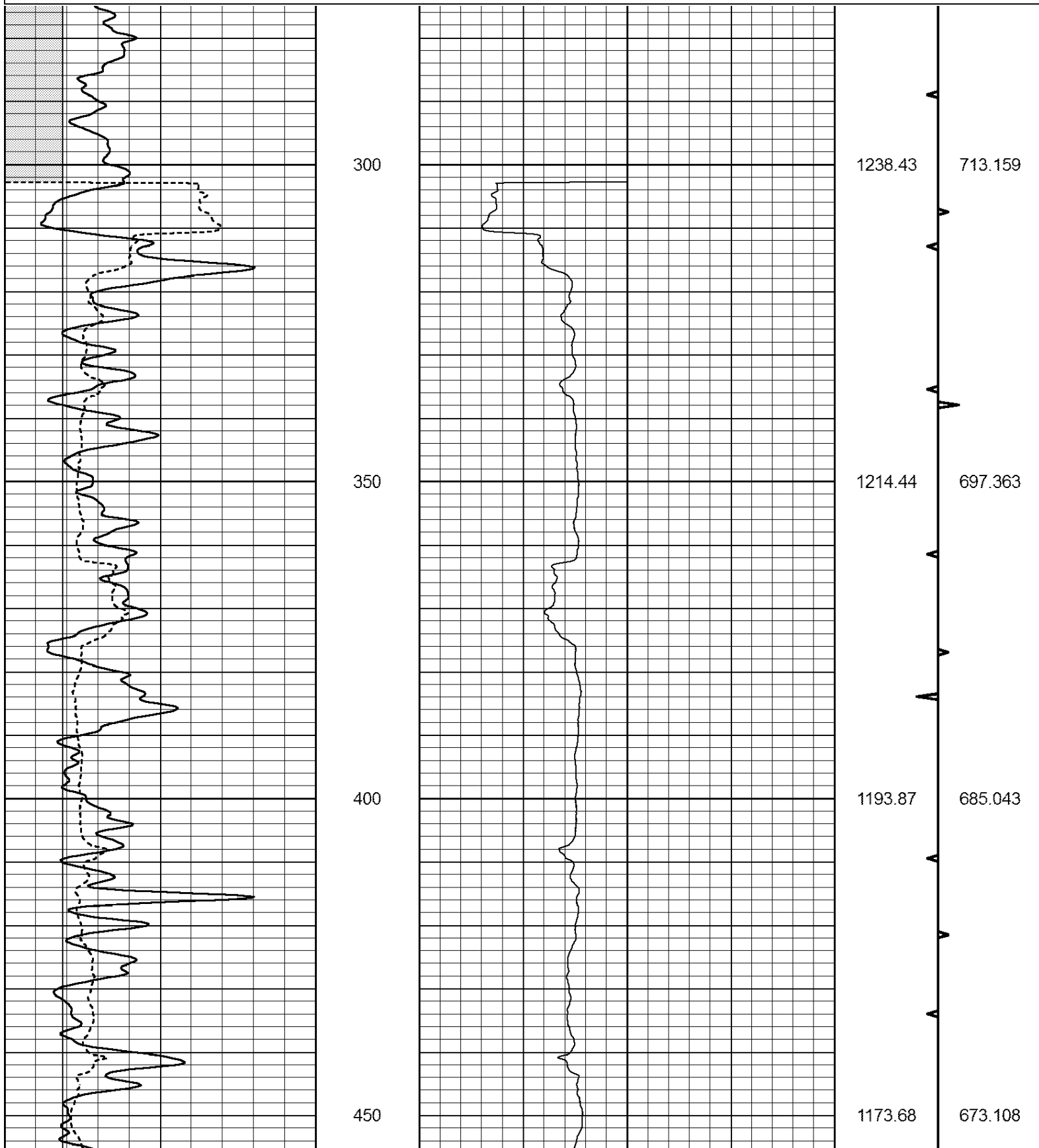
MAIN PASS

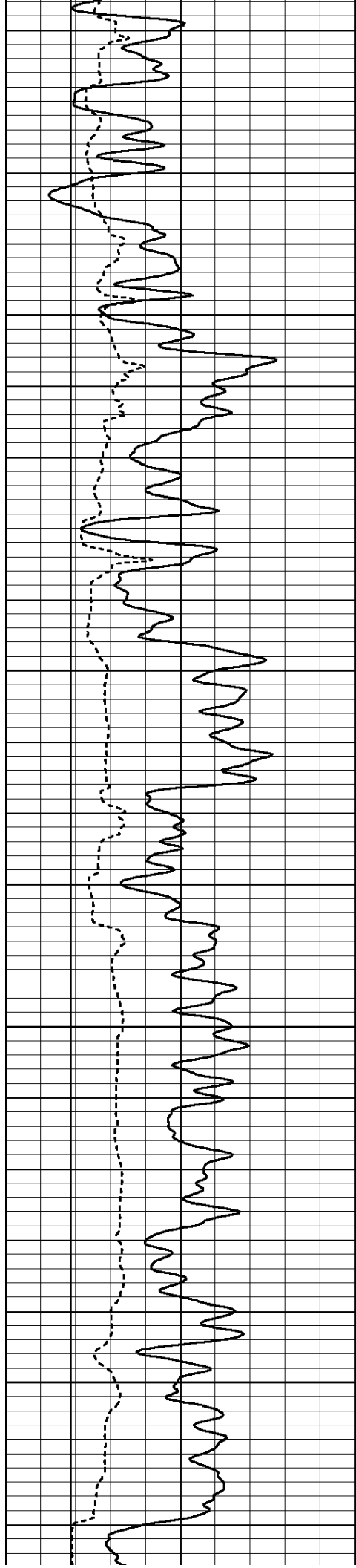
Database File: 4678pe.db
 Dataset Pathname: pass5.1
 Presentation Format: obrbore
 Dataset Creation: Mon Feb 10 11:00:11 2020 by Calc Open-Cased 090629
 Charted by: Depth in Feet scaled 1:240

0	GR (GAPI)	150
6	MELCAL (in)	16

16 LEFT CALIPER (in) 6

BVTX (ft3)	AVTX (ft3)
TBHV (ft3)	ABHV (ft3)



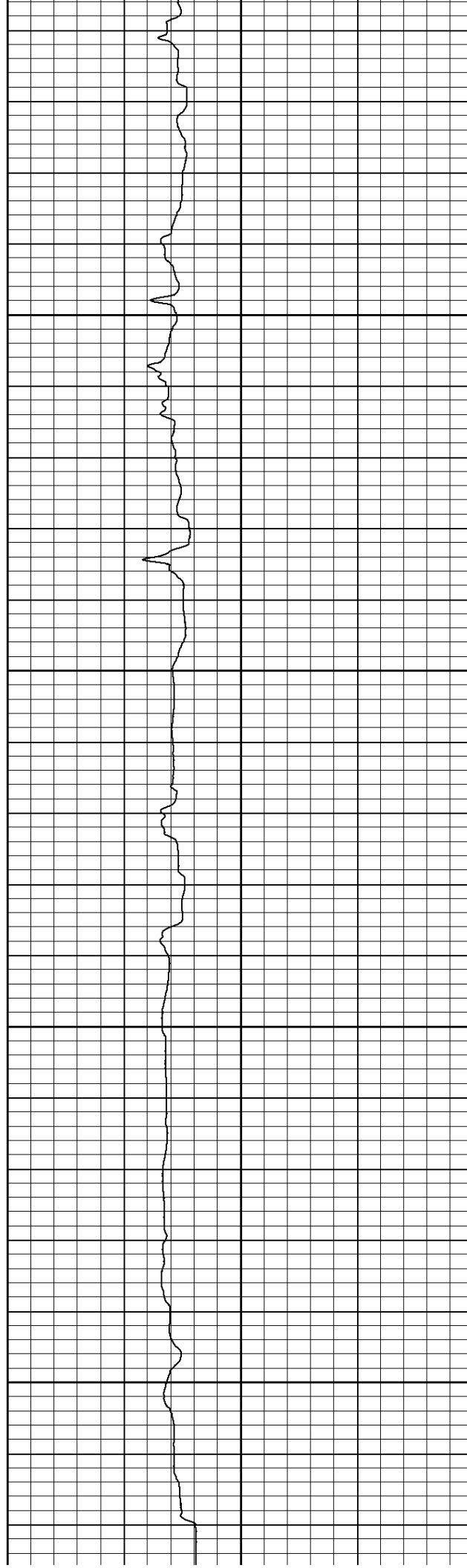


500

550

600

650



1153.11

1131.94

1110.21

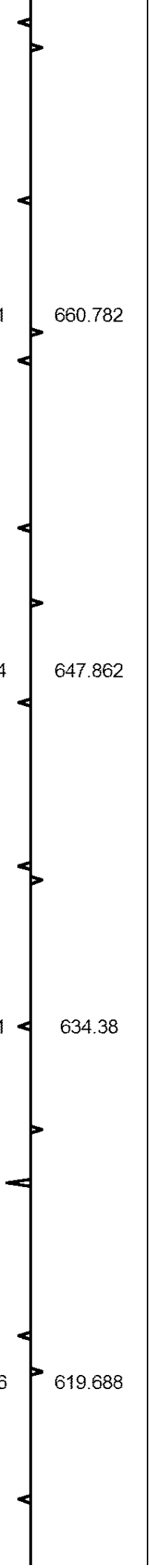
1087.26

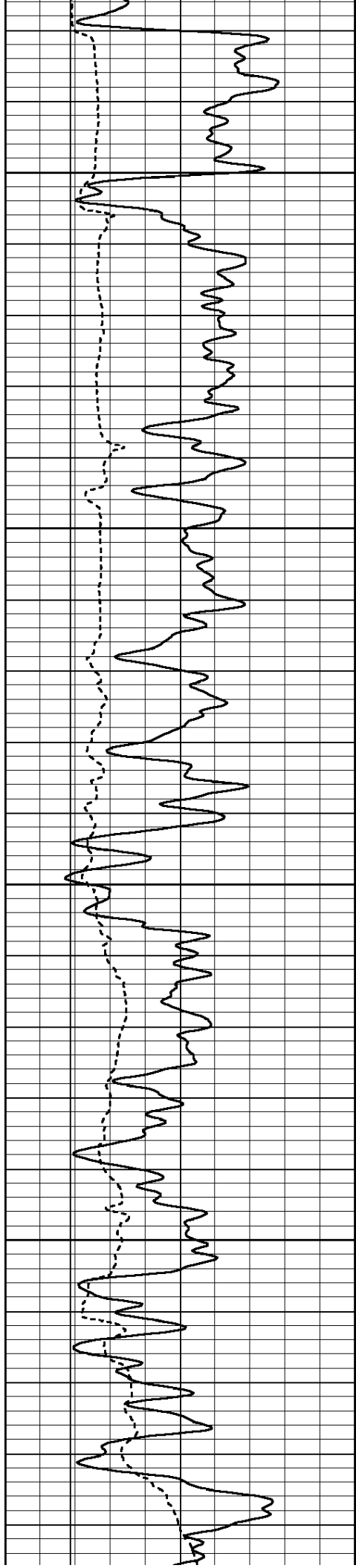
660.782

647.862

634.38

619.688



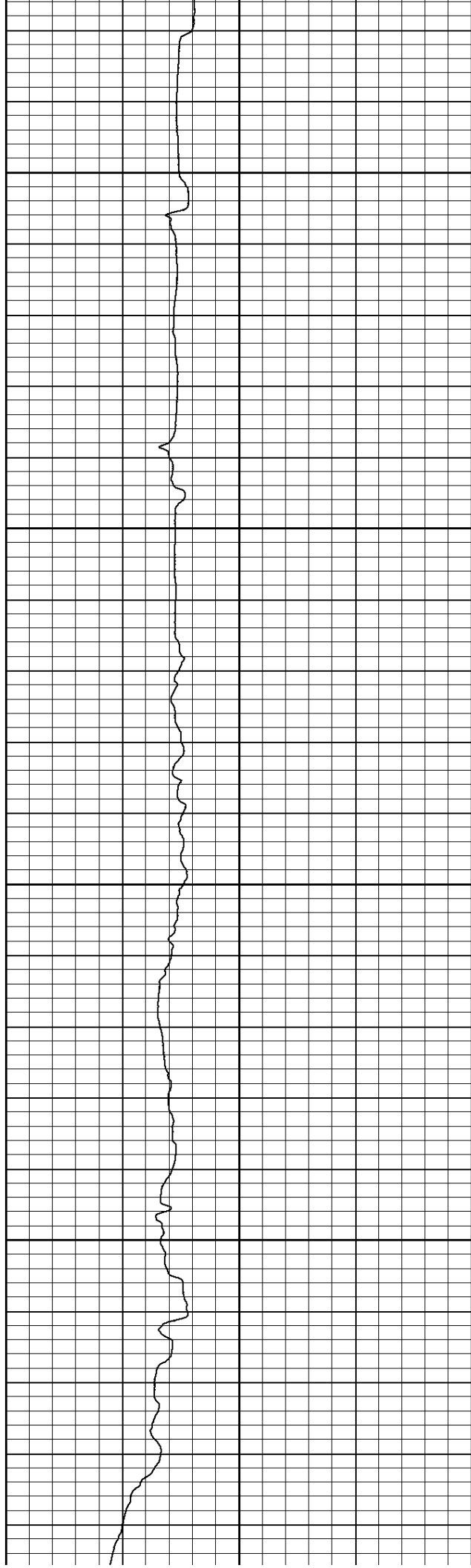


700

750

800

850



1067.32

1046.76

1026.60

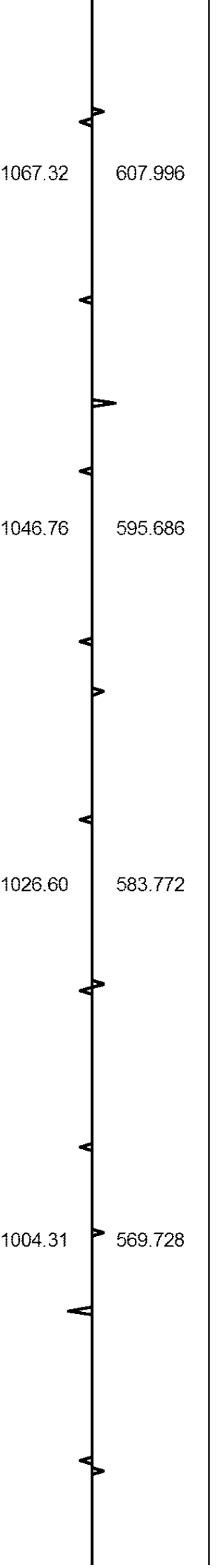
1004.31

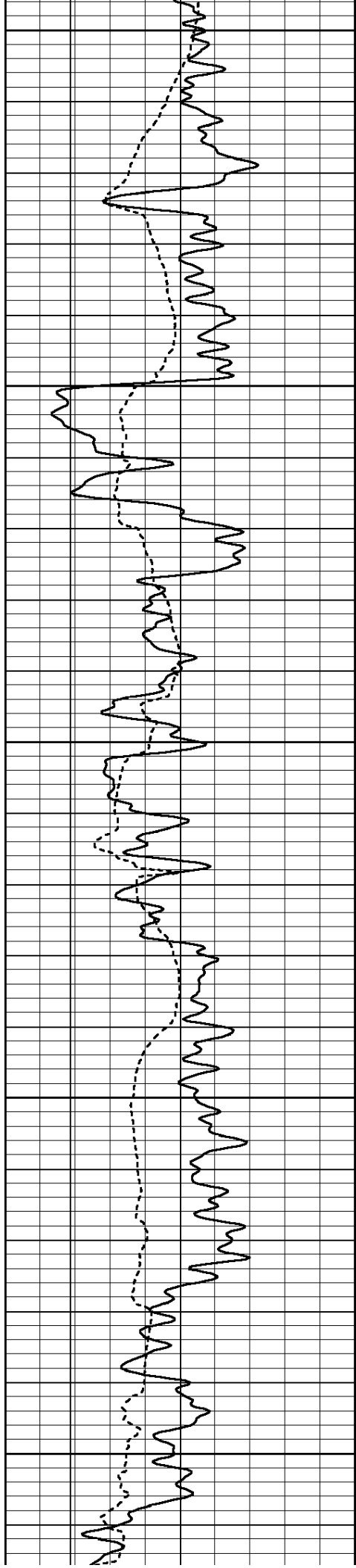
607.996

595.686

583.772

569.728





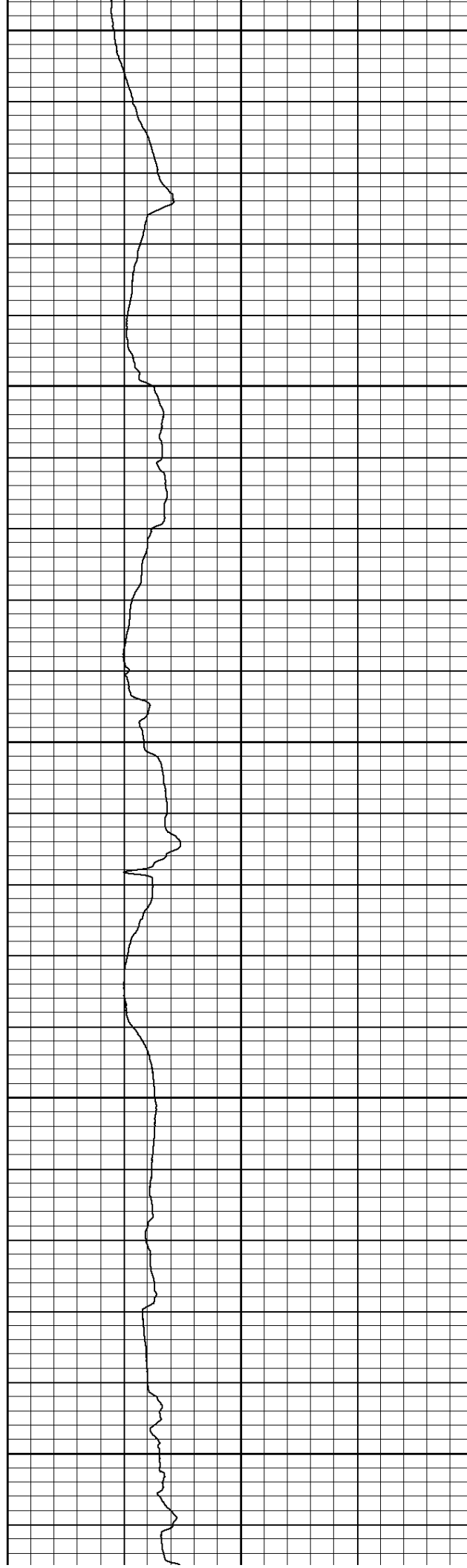
900

950

1000

1050

1100



977.82

948.32

920.84

893.60

867.32

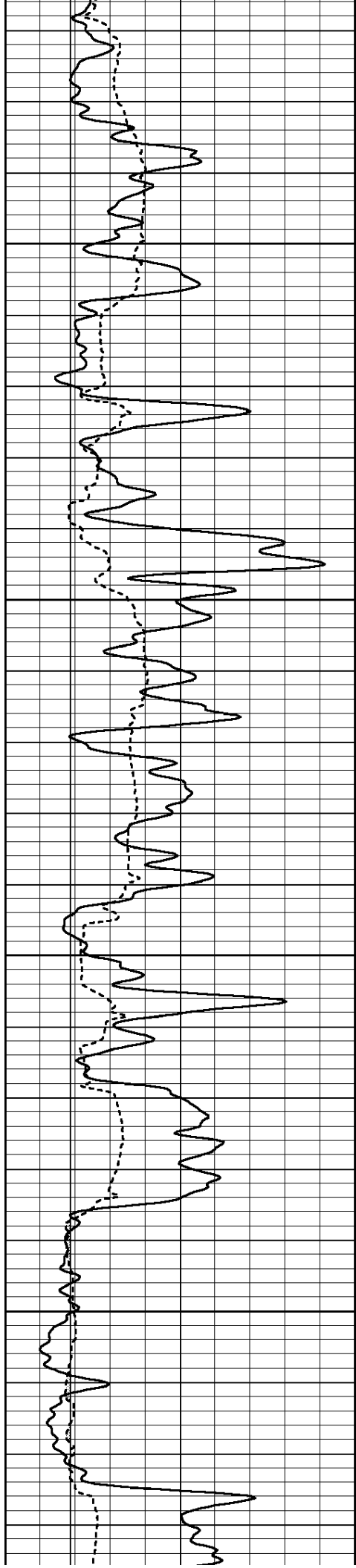
551.491

530.242

511.01

492.018

473.989

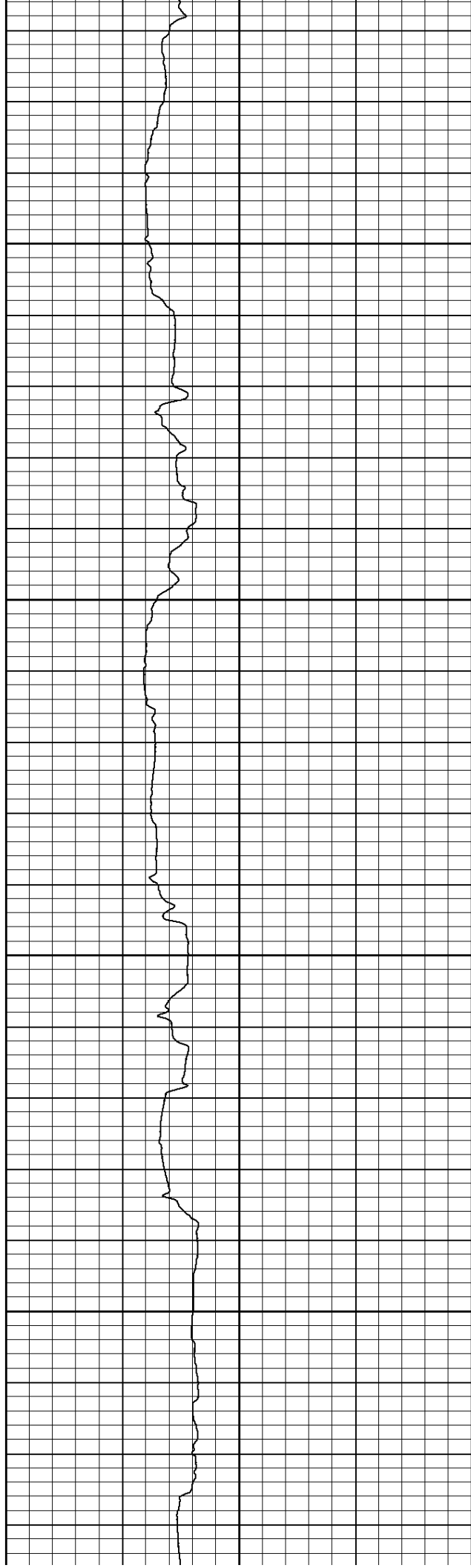


1150

1200

1250

1300



843.17

821.76

796.88

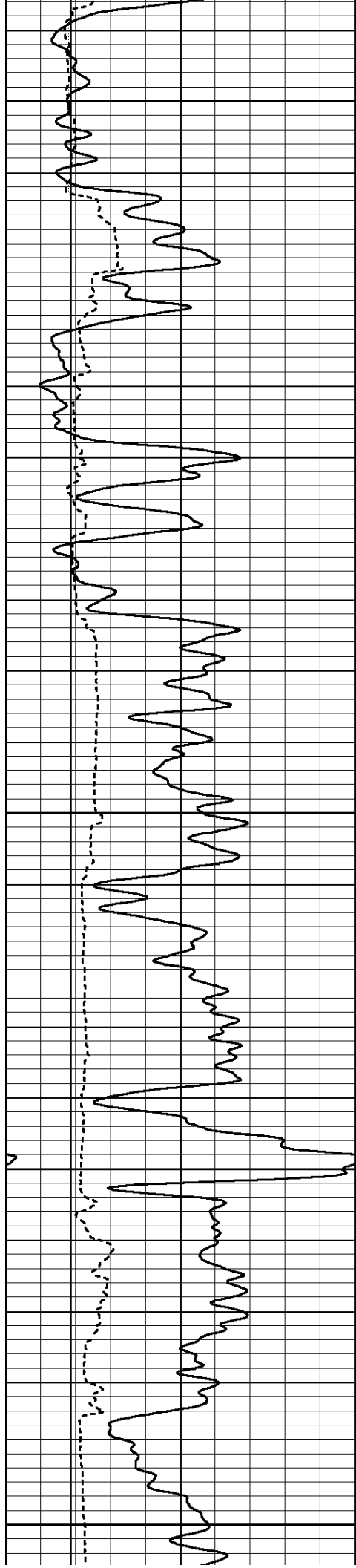
776.82

458.09

444.925

428.295

416.488



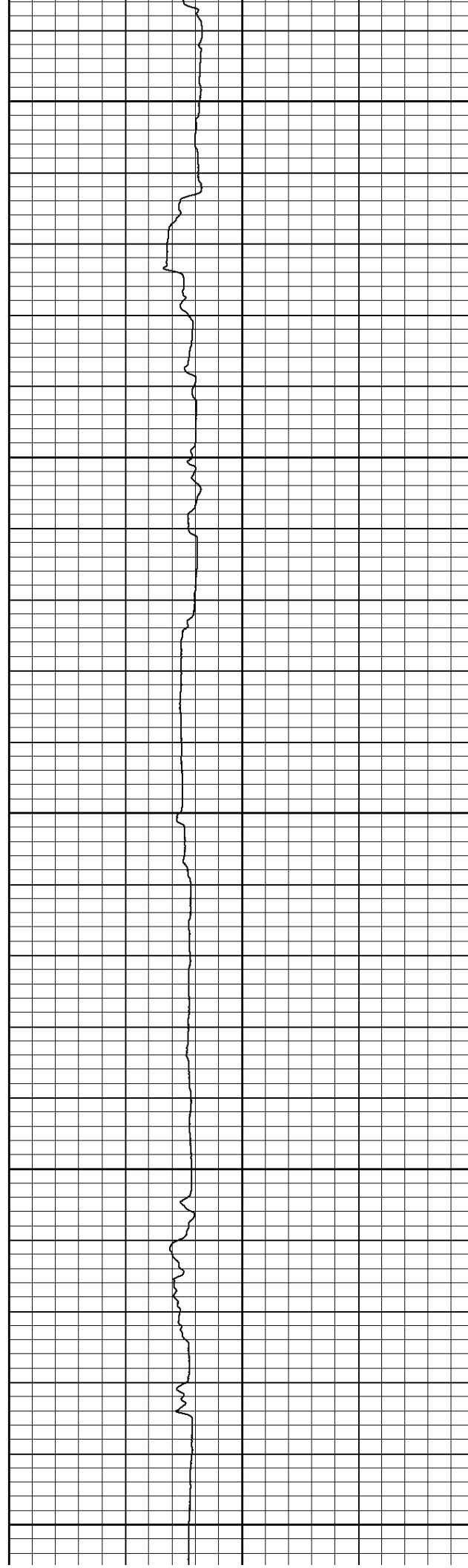
1350

1400

1450

1500

1550



759.31

740.58

721.69

703.01

683.73

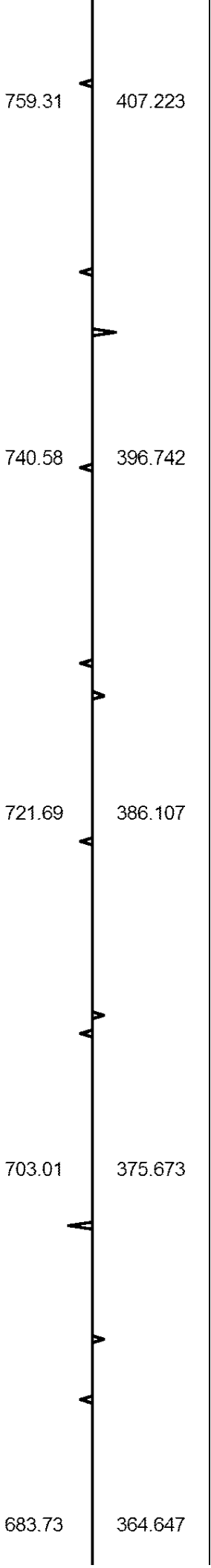
407.223

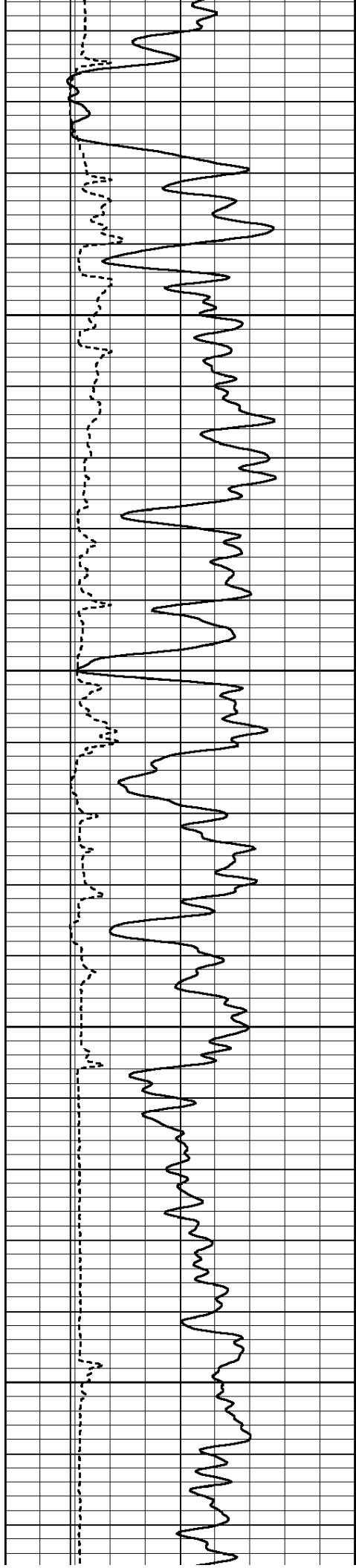
396.742

386.107

375.673

364.647



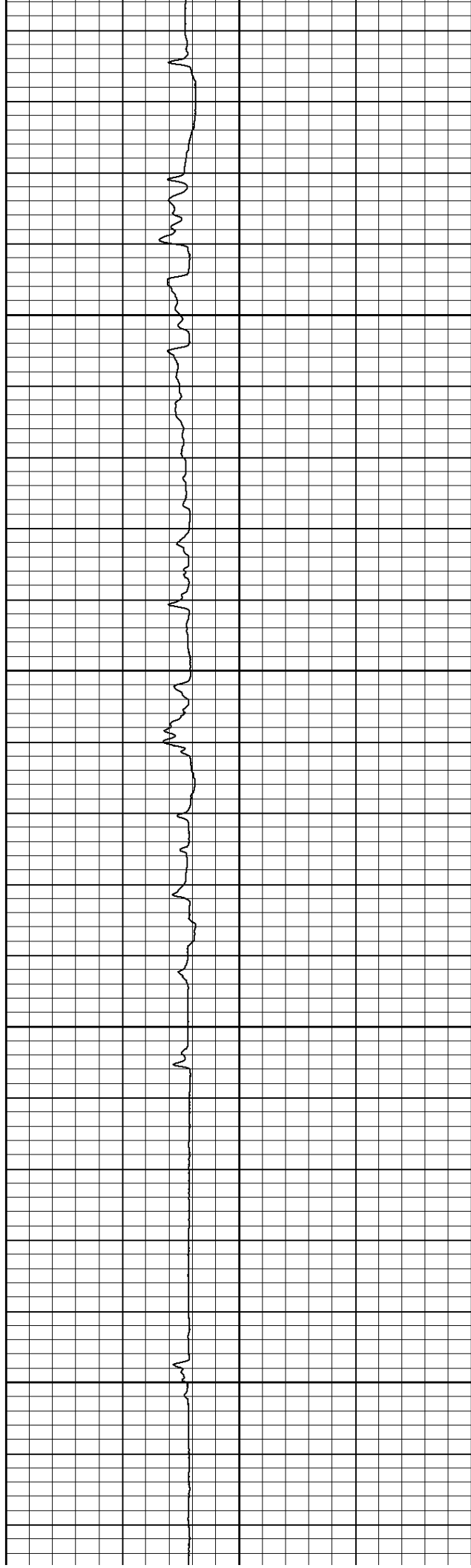


1600

1650

1700

1750



664.73

645.70

627.11

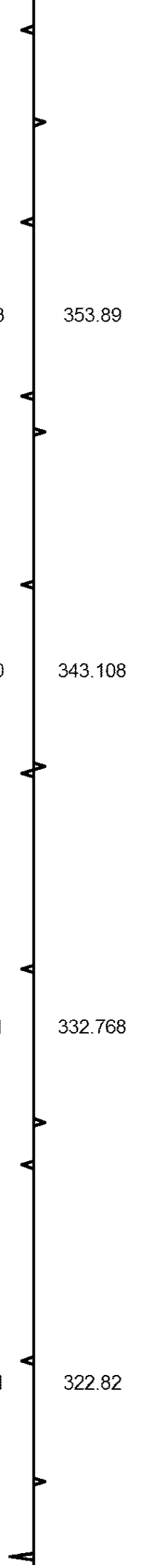
608.91

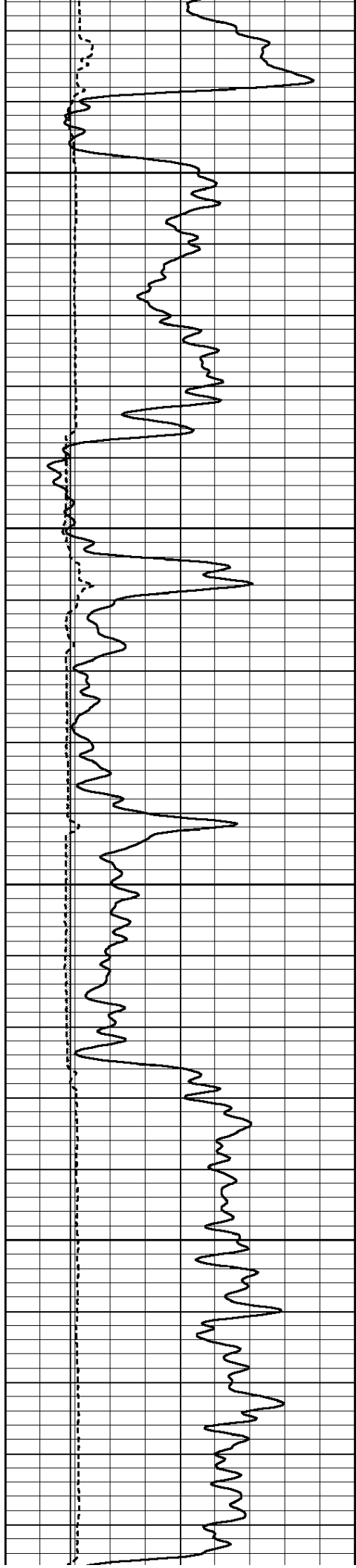
353.89

343.108

332.768

322.82



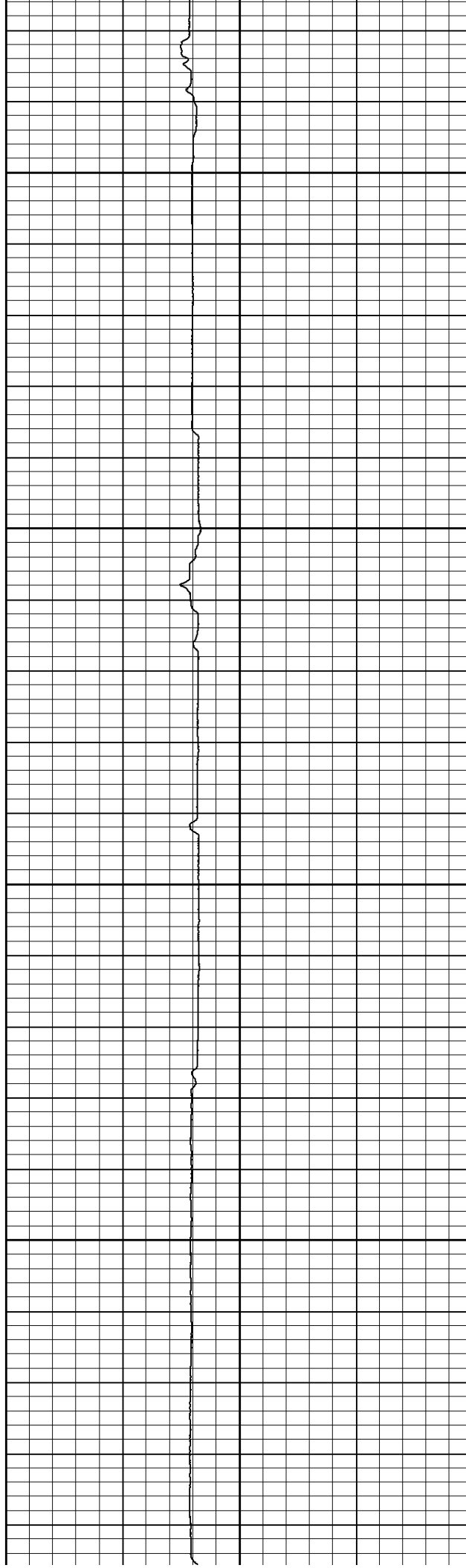


1800

1850

1900

1950



590.97

573.79

557.04

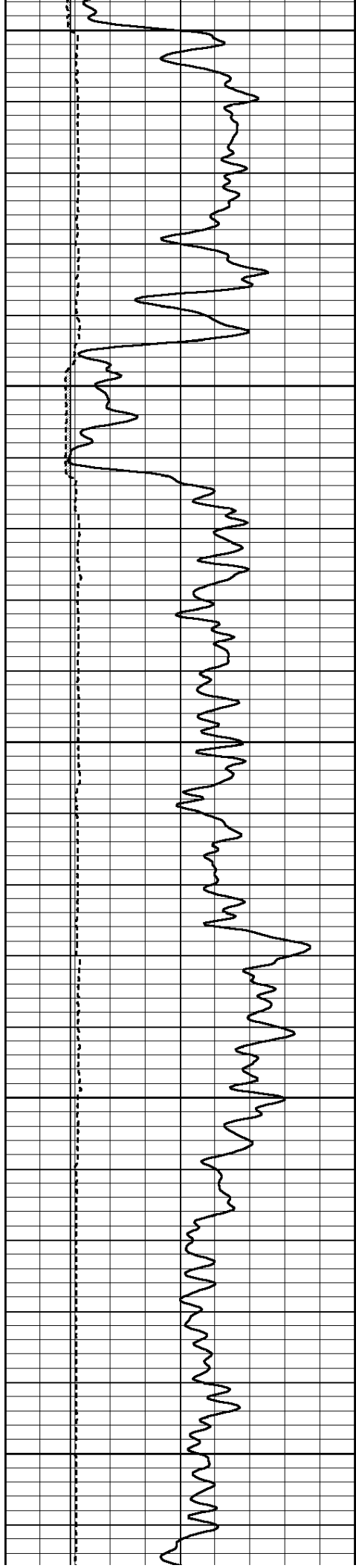
540.08

313.126

304.199

295.701

286.986



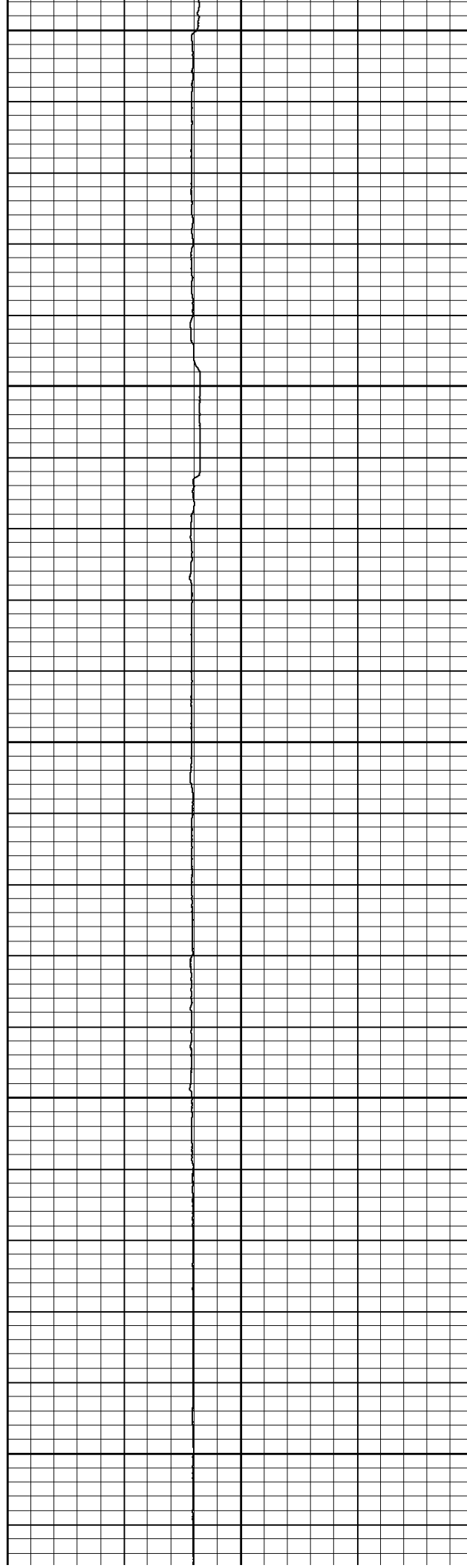
2000

2050

2100

2150

2200



522.39

504.72

487.28

469.45

451.82

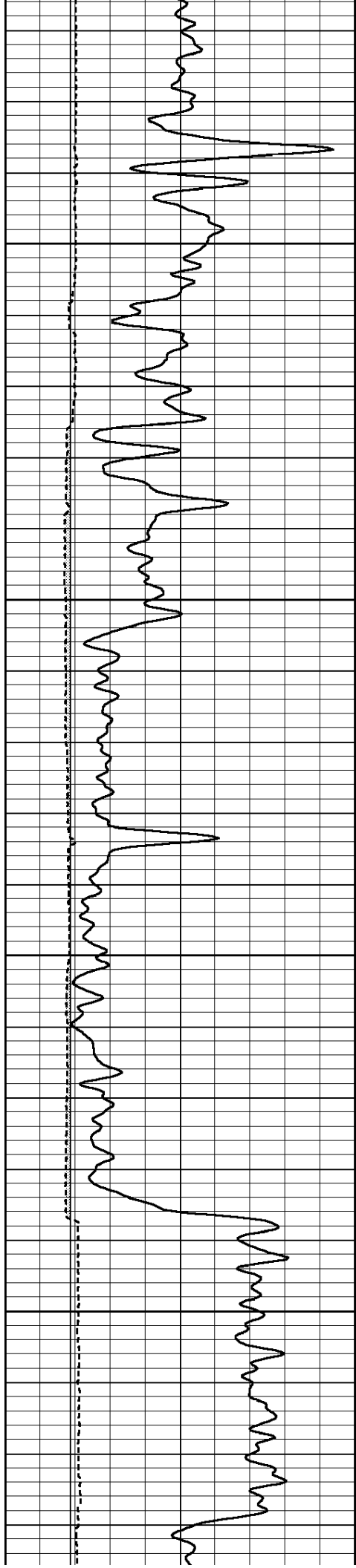
277.55

268.126

258.94

249.359

239.974

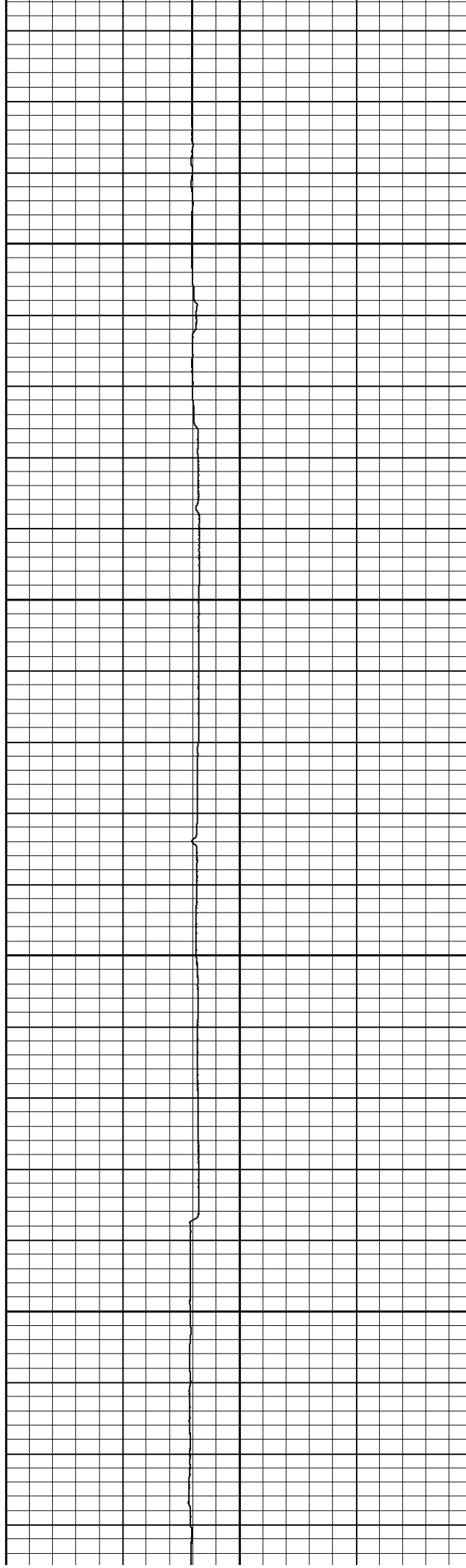


2250

2300

2350

2400



434.27

417.45

400.94

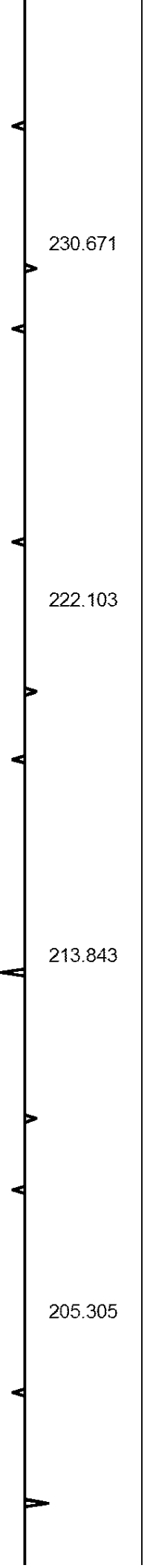
384.15

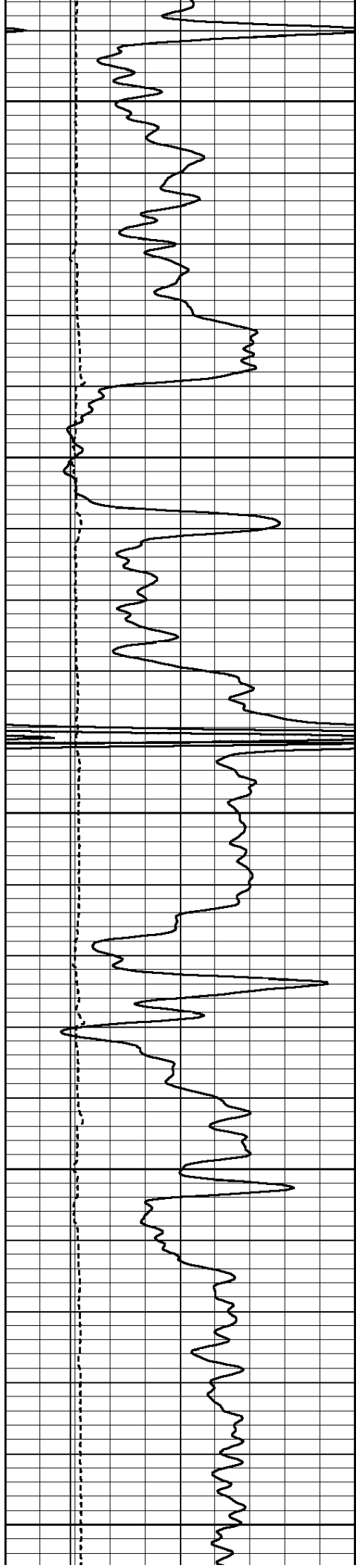
230.671

222.103

213.843

205.305





2450

2500

2550

2600

2650

366.35

348.72

331.03

313.22

295.24

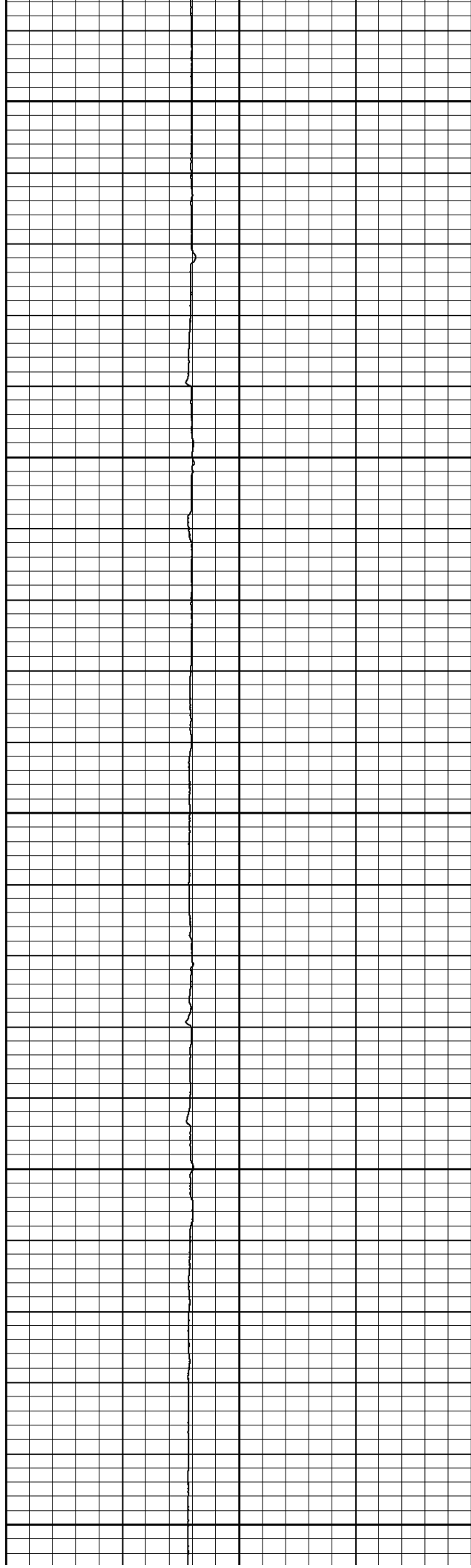
195.757

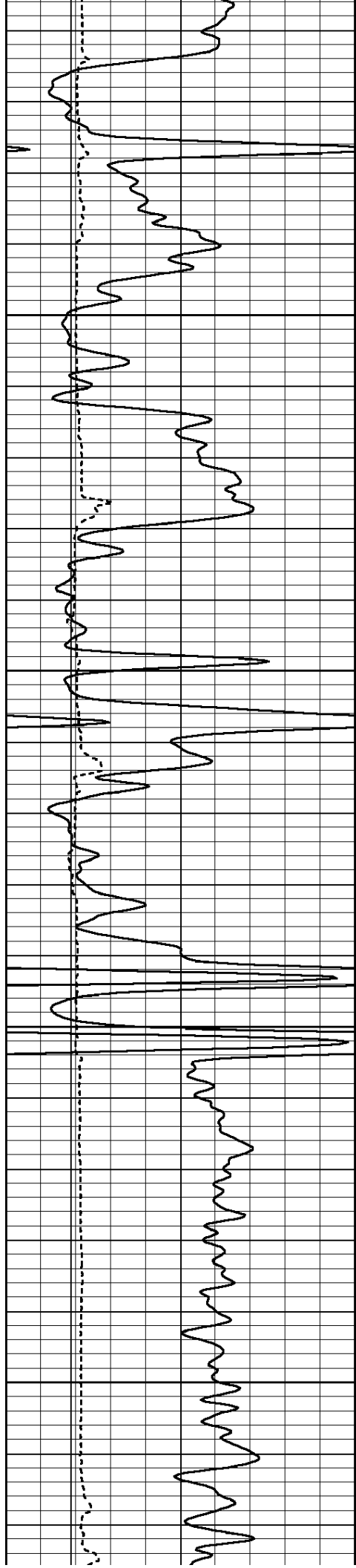
186.369

176.935

167.367

157.639



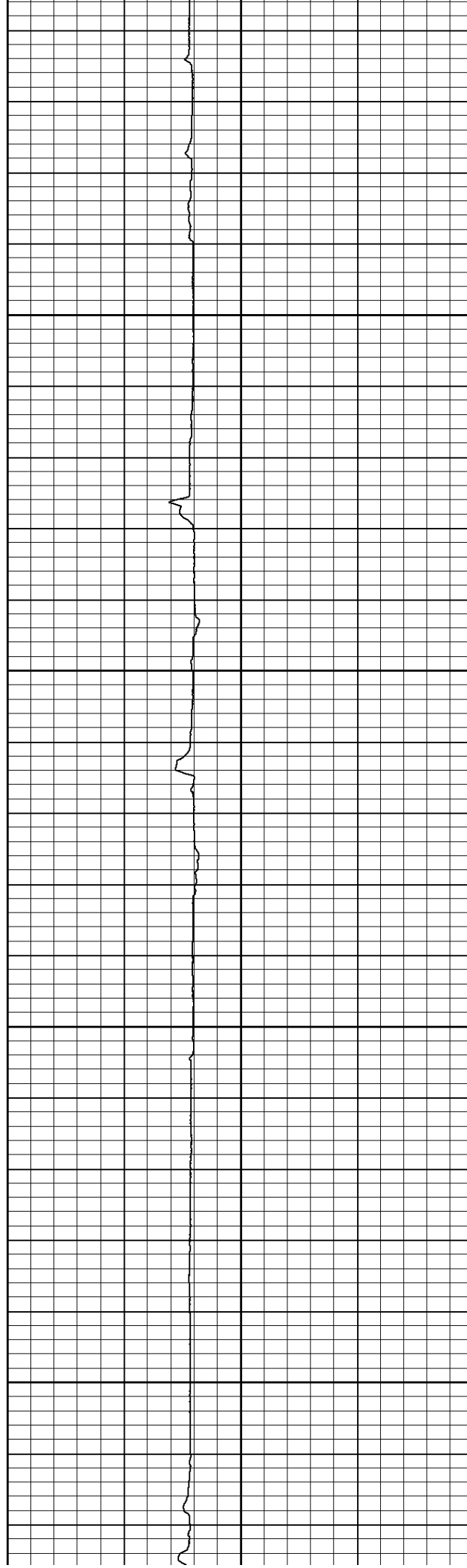


2700

2750

2800

2850



277.25

259.47

241.79

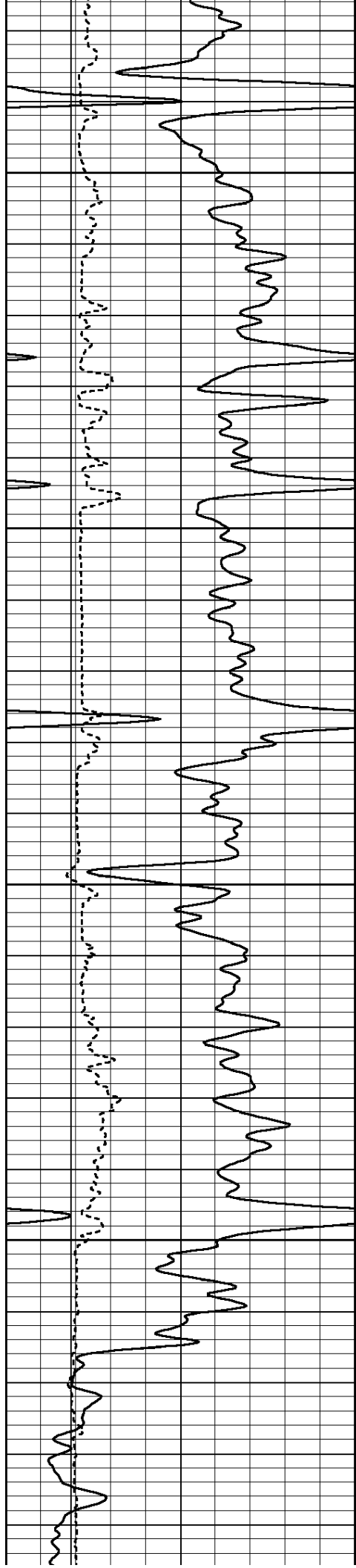
223.75

147.896

138.366

128.936

119.15

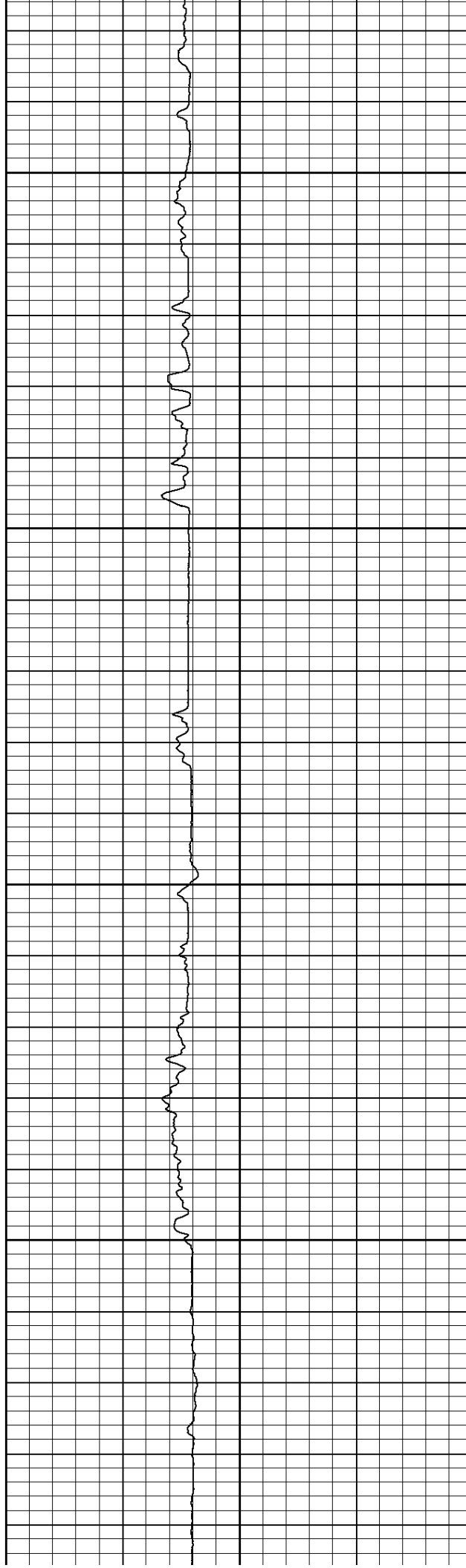


2900

2950

3000

3050



205.22

185.92

167.73

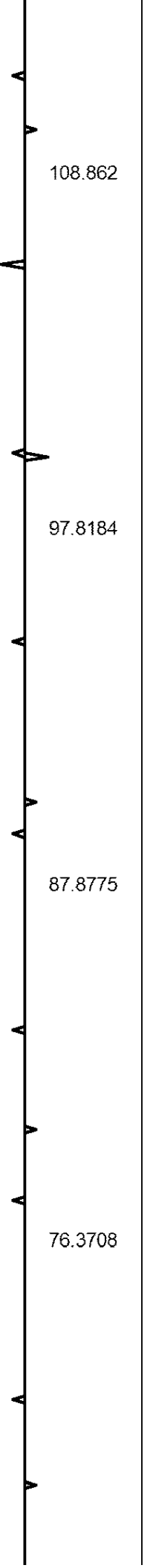
147.98

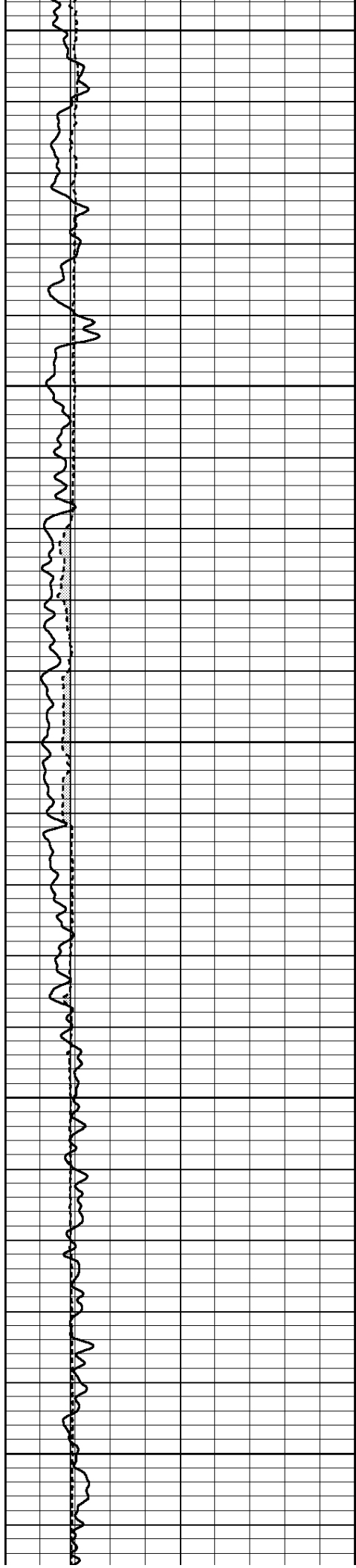
108.862

97.8184

87.8775

76.3708





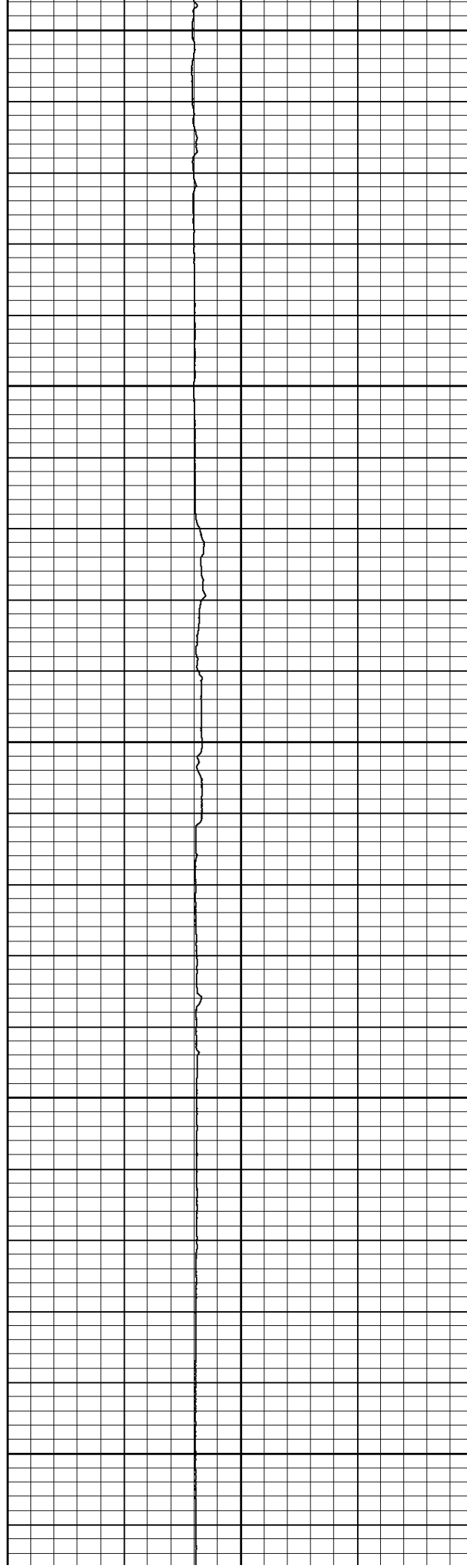
3100

3150

3200

3250

3300



130.56

113.18

96.57

79.82

62.83

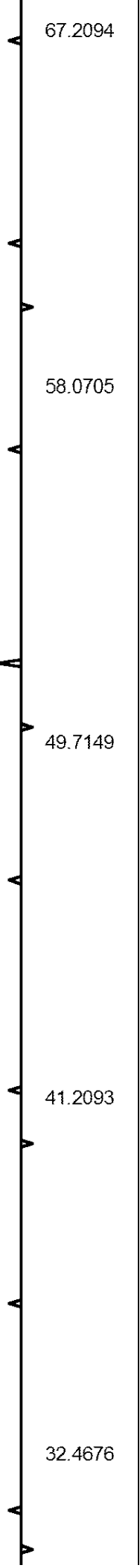
67.2094

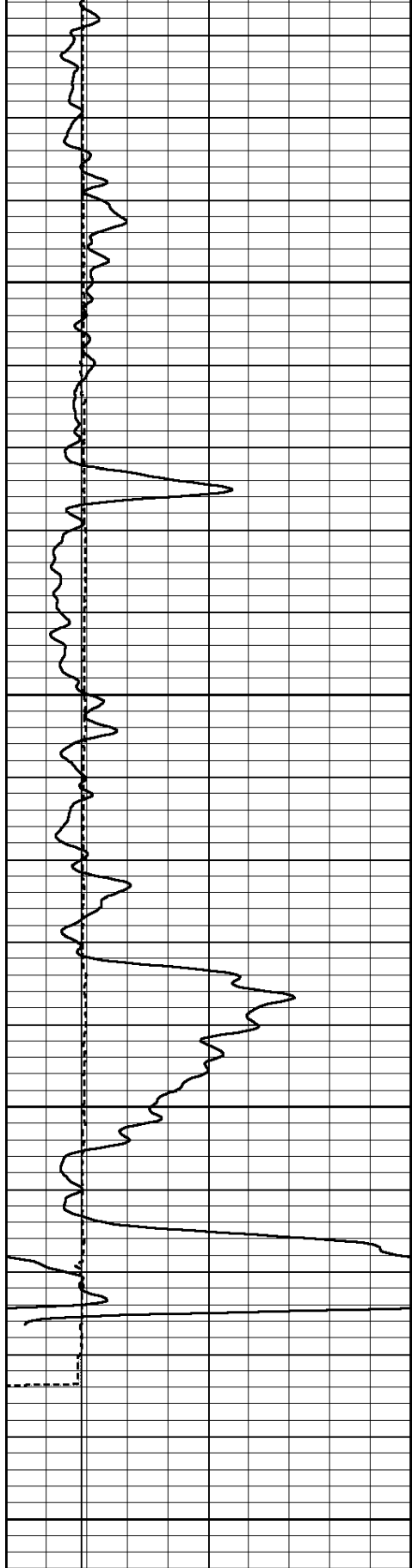
58.0705

49.7149

41.2093

32.4676





3350

3400

3450

3500

16 LEFT CALIPER (in) 6

45.78

28.63

11.49

0.00

23.6698

14.7712

5.87867

0

0	GR (GAPI)	150
6	MELCAL (in)	16

BVTX (ft3)	AVTX (ft3)
TBHV (ft3)	ABHV (ft3)