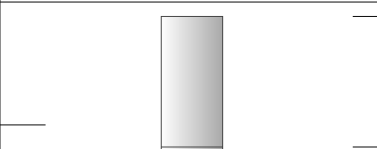
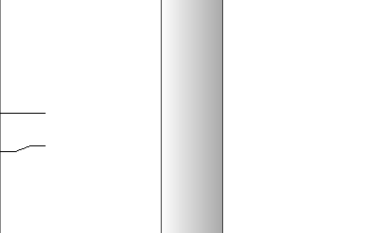
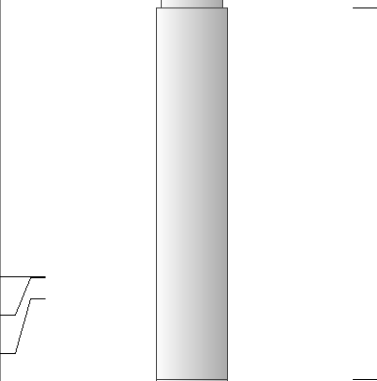
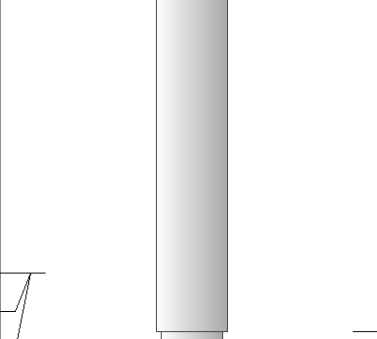
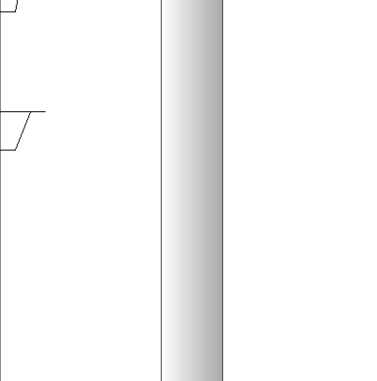


Top - Bottom

M	A	SZCOR	NPORSEL	FLUIDDEN g/cc	MATRXDEN g/cc	SPSHIFT mV	SNDERRM mmho/m
2	1	Off	Limestone	1	2.71	115	0
SNDERR mmho/m	SRFTEMP degF	CASETHCK in	CASEOD in	PERFS	TDEPTH ft	BOTTEMP degF	BOREID in
0	68	0	5.5	0	4361	120	7.875

Sensor	Offset (ft)	Schematic	Description	Length (ft)	O.D. (in)	Weight (lb)
GR	40.58		GR-M&W (89)	3.00	3.50	50.00
CNLSC CNSSC	37.48 36.73		CNT-M&W (207-MW)	5.50	3.50	100.00
LSD DCAL SSD	28.43 28.42 27.93		CDL-M&W (817-947)	8.50	4.00	250.00
MCAL MI MN	19.83 19.83 19.83		ML-PSIML (PSI-01) GO Micro log tools converted to Simplec electronics	7.58	4.00	65.00
RLL3F RLL3	15.80 15.80					

CILD 8.00

CILM 4.70

SP 0.20

DIL-PSI HIGH TEMP (PSI 971 HT)

18.50

3.50

220.00

Dataset: carmenschmitt_wpunit_6_7.db: field/well/STKML/pass3.1
 Total length: 43.08 ft
 Total weight: 685.00 lb
 O.D.: 4.00 in

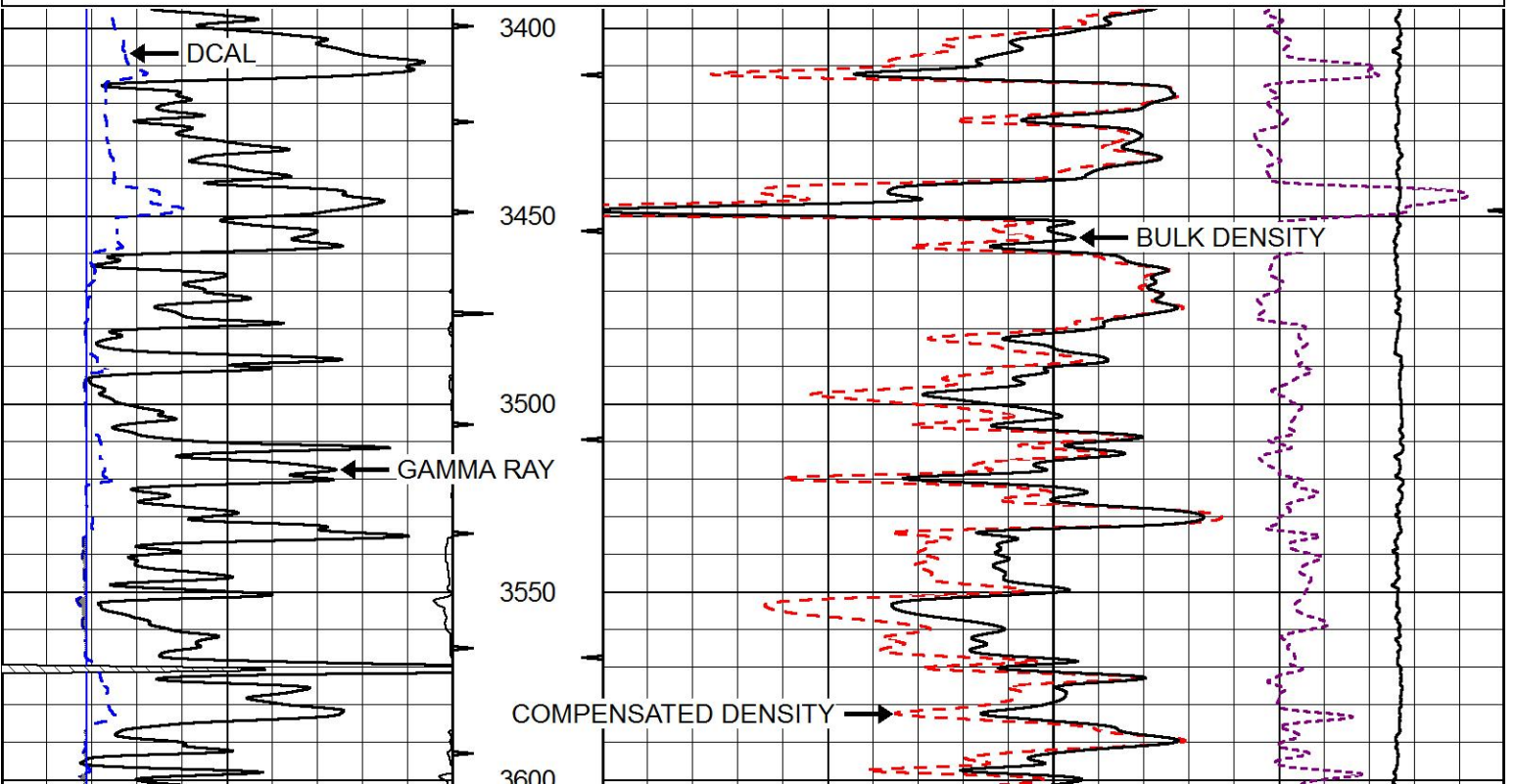


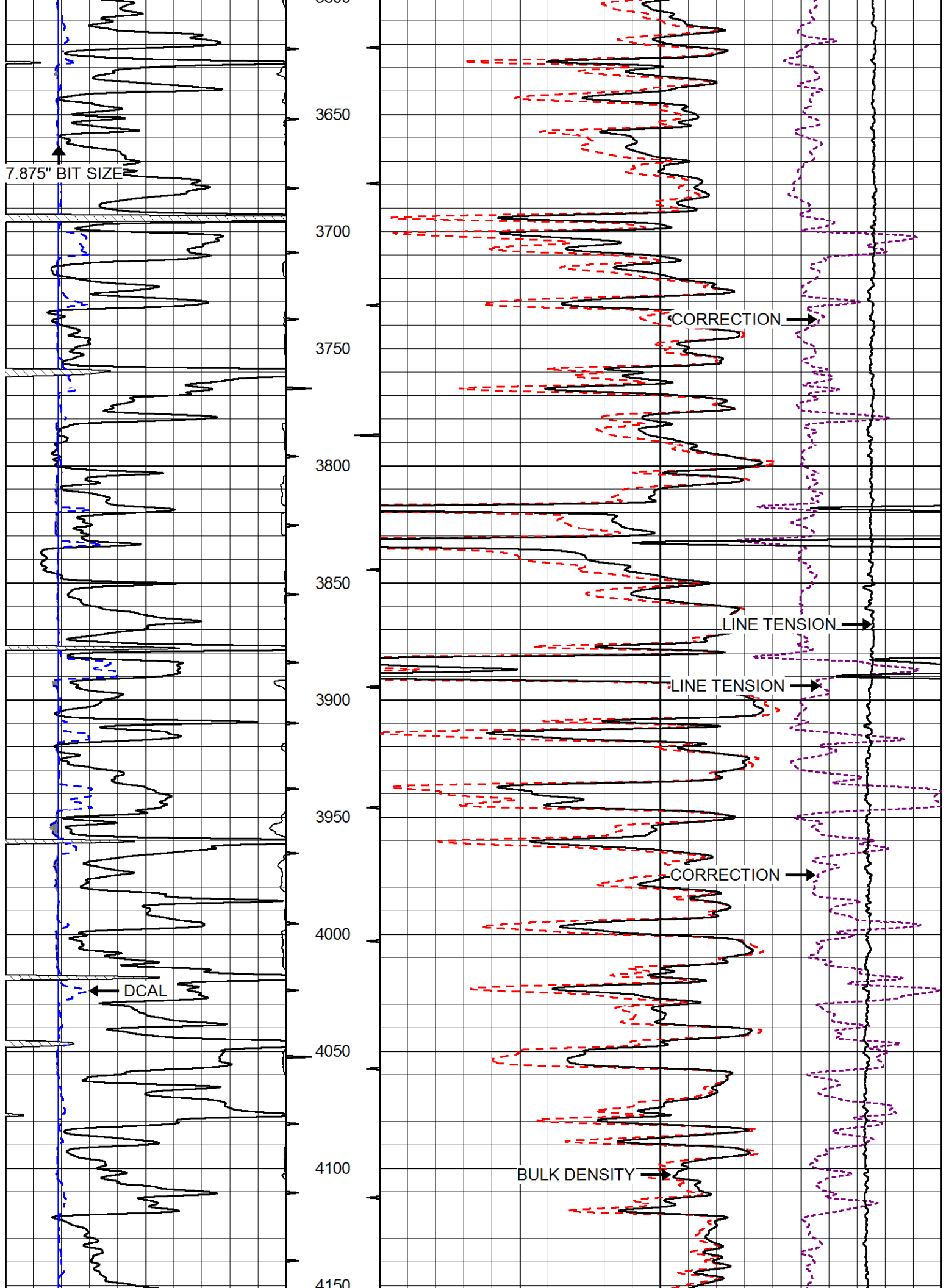
MAIN PASS

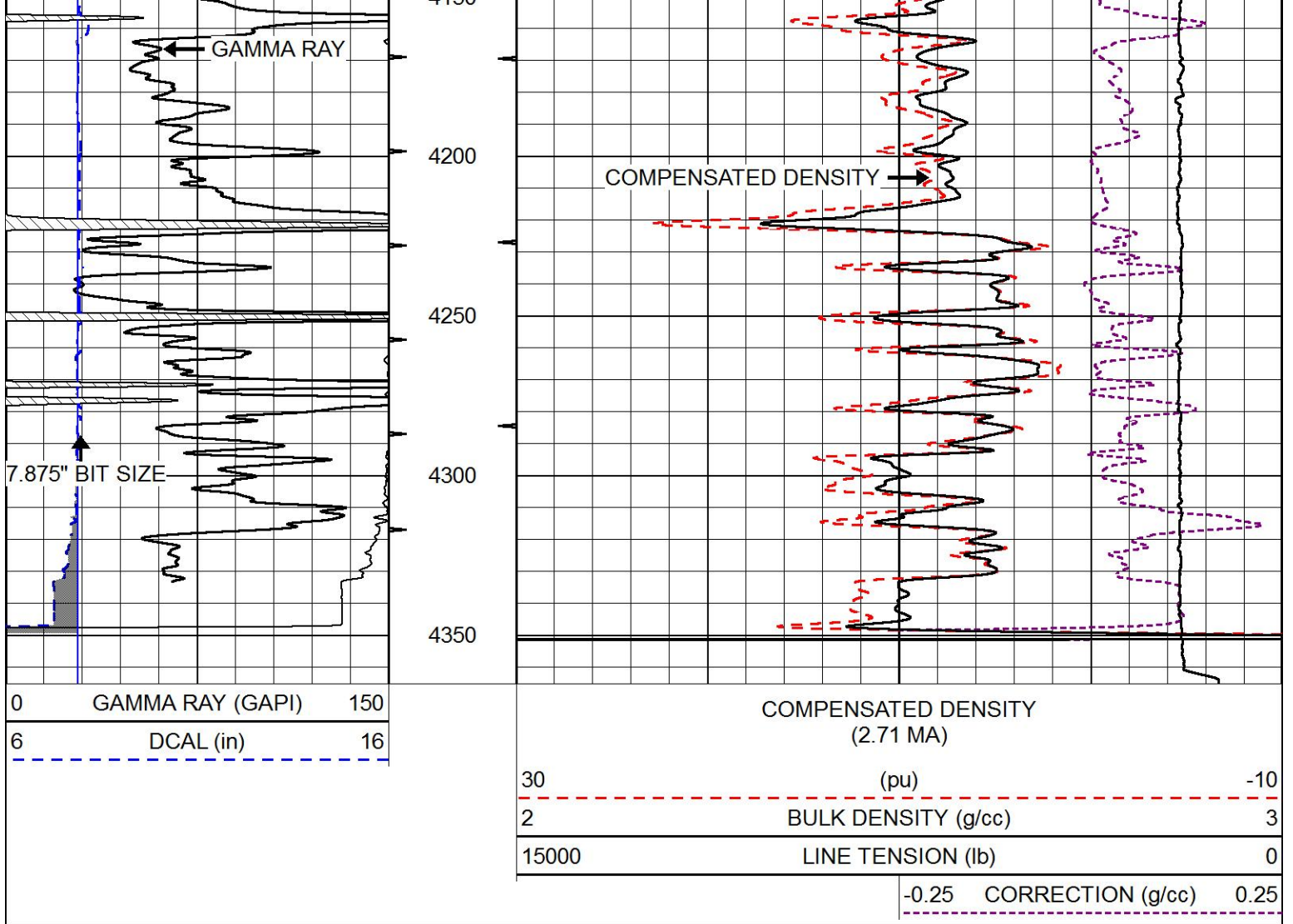
Database File: carmenschmitt_wpunit_6_7.db
 Dataset Pathname: STKML/pass3.1
 Presentation Format: cdl
 Dataset Creation: Sat Jun 02 10:40:41 2018
 Charted by: Depth in Feet scaled 1:600

0	GAMMA RAY (GAPI)	150
6	DCAL (in)	16

COMPENSATED DENSITY (2.71 MA)	
30 (pu)	-10
2 BULK DENSITY (g/cc)	3
15000 LINE TENSION (lb)	0
-0.25 CORRECTION (g/cc)	0.25

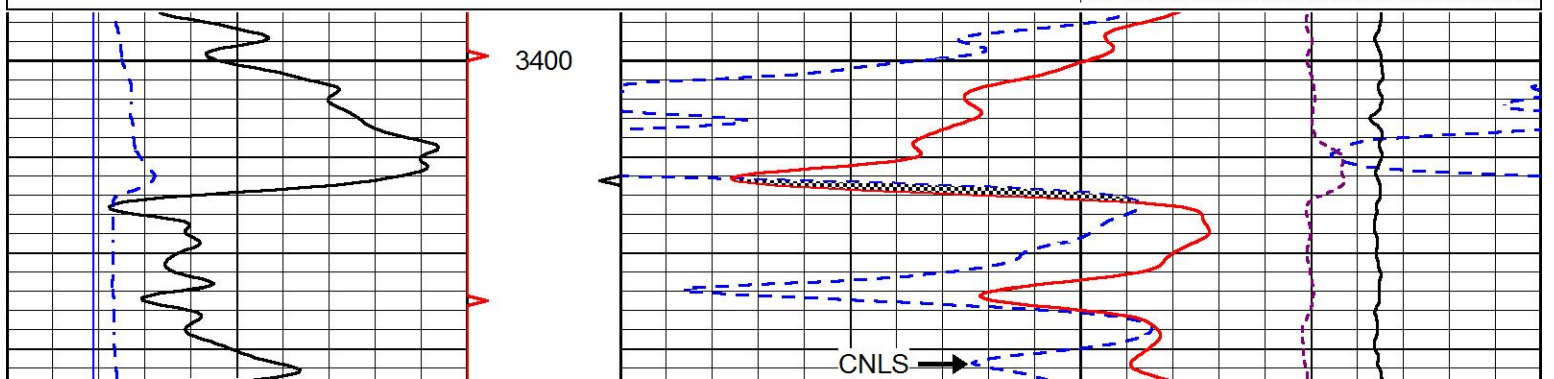
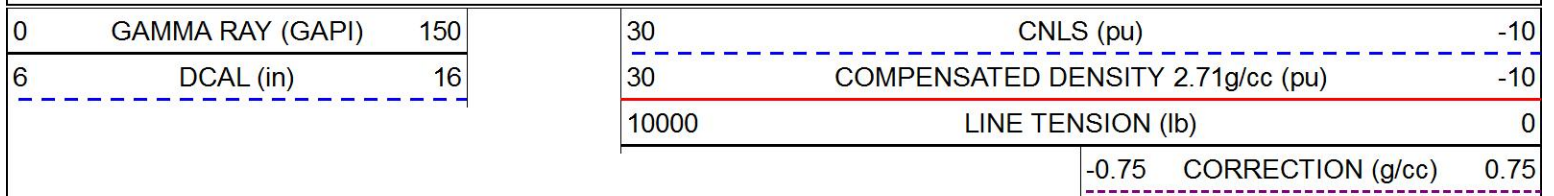


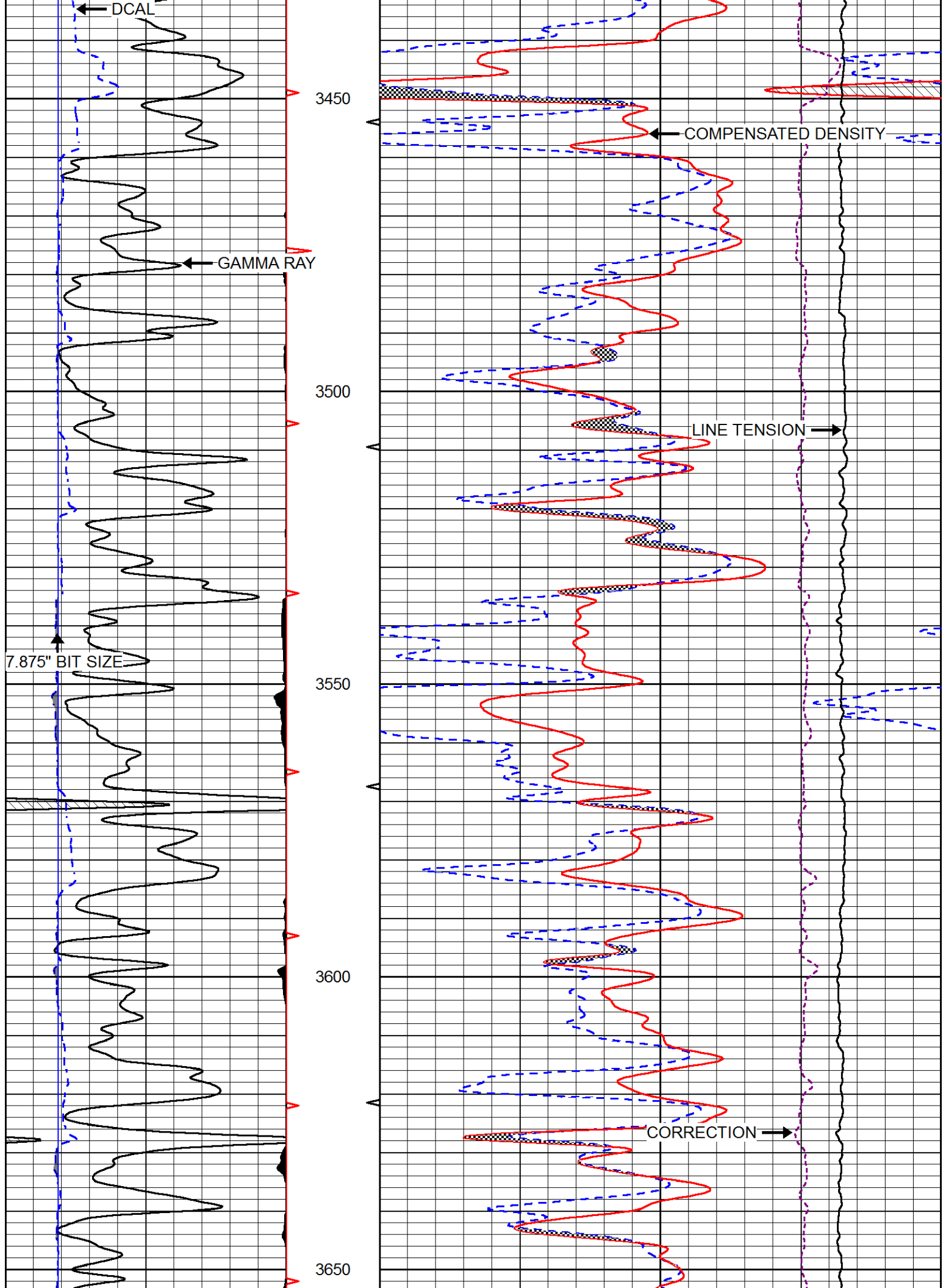


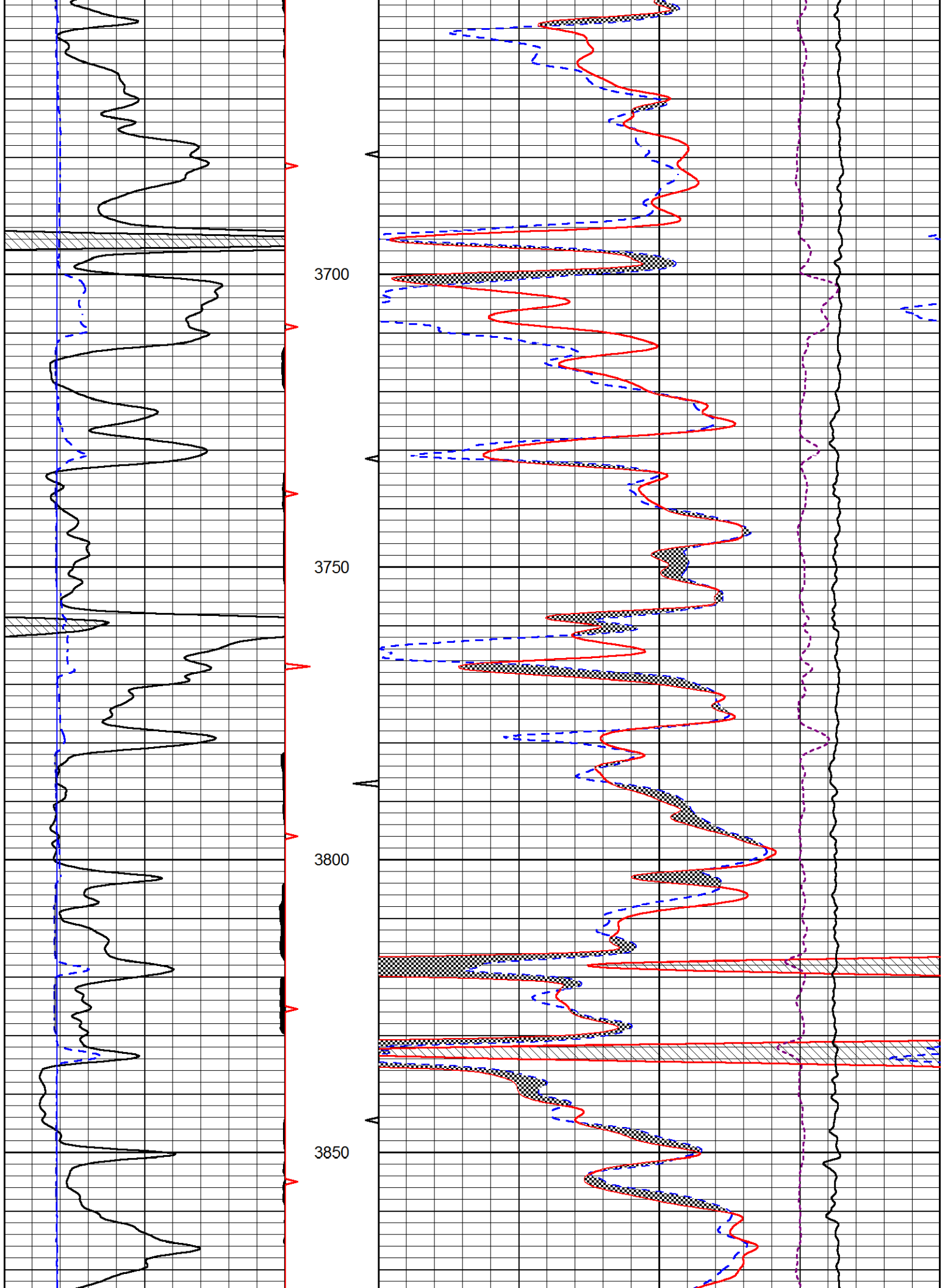


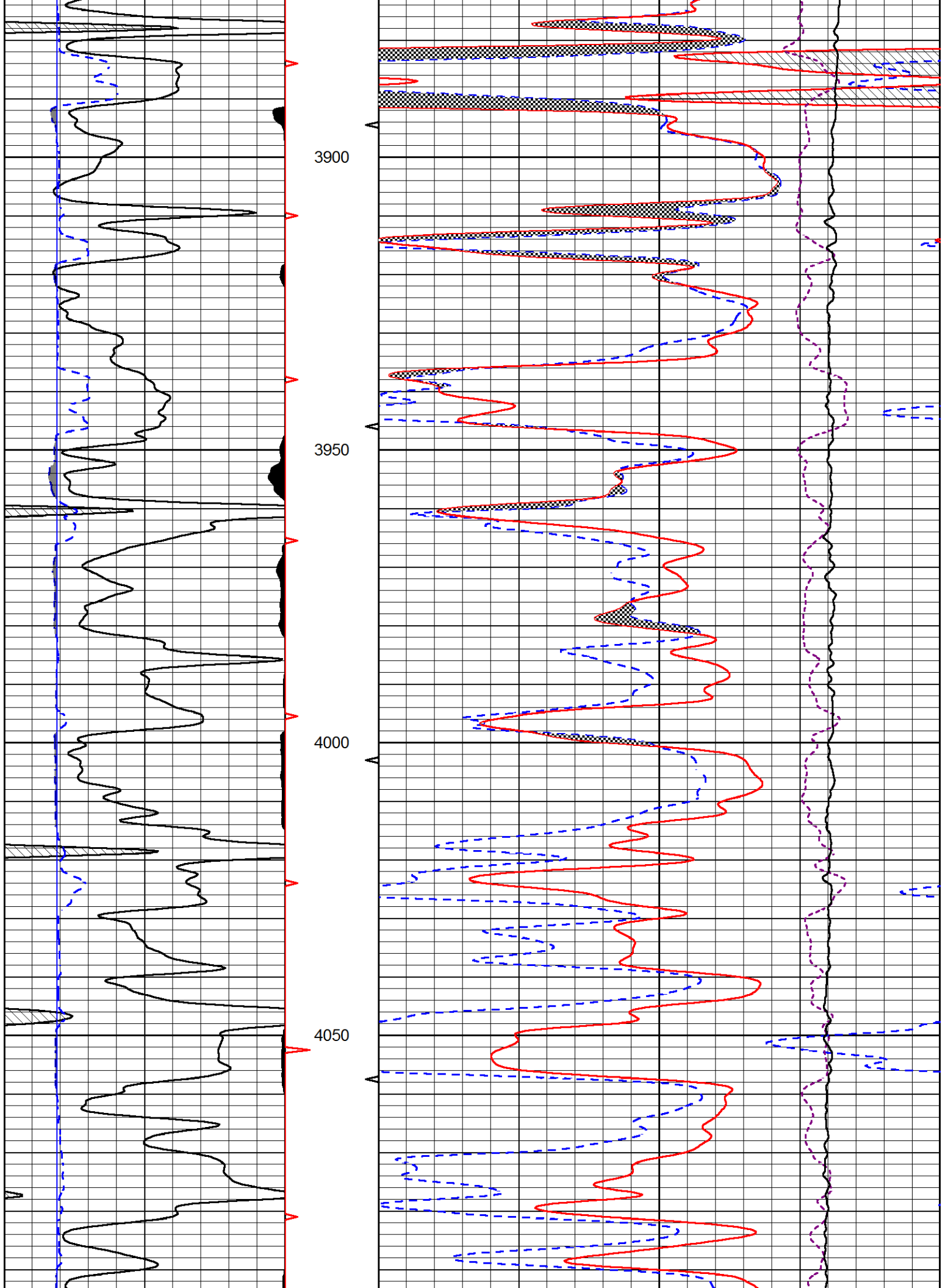
MAIN PASS

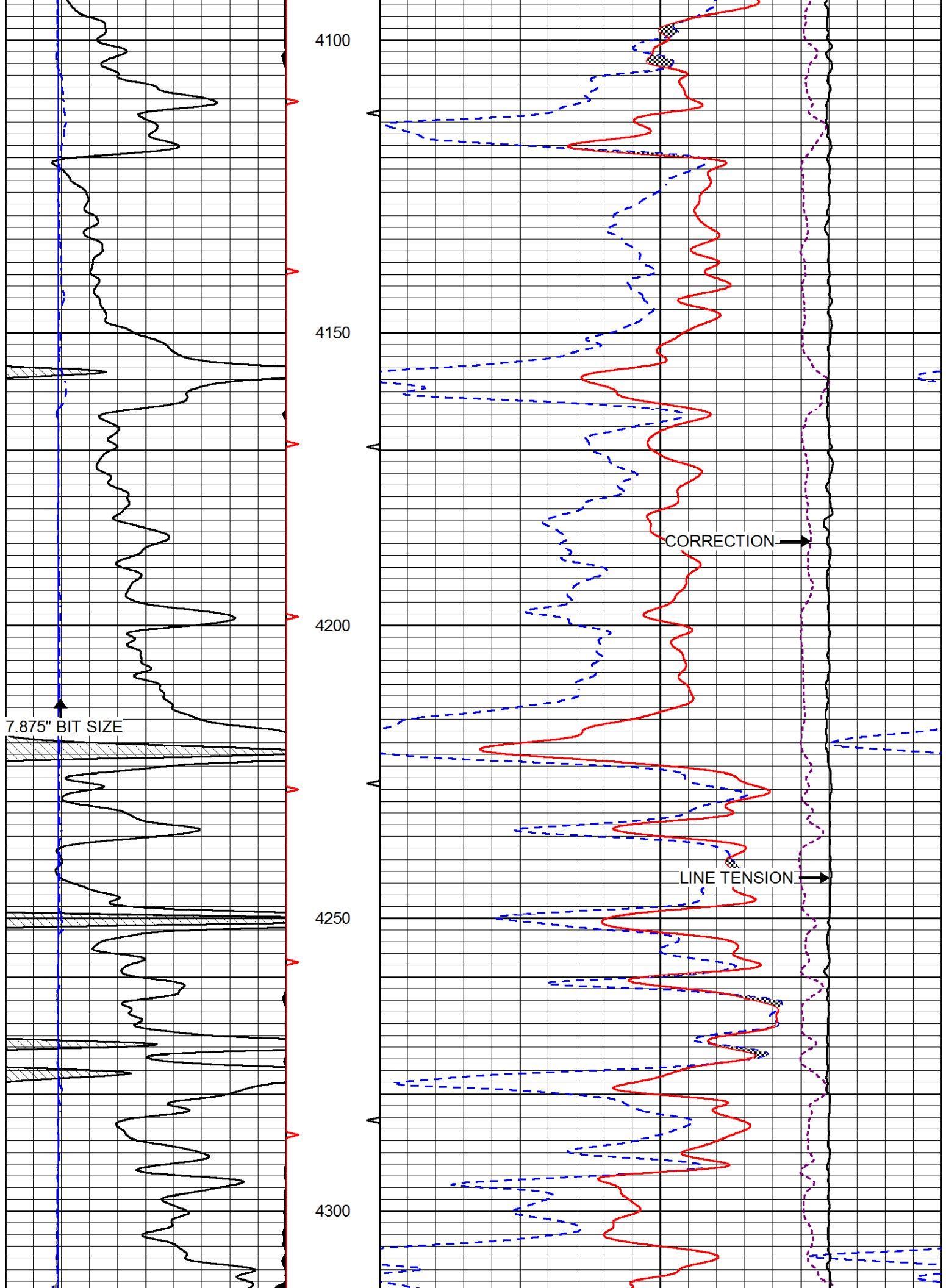
Database File: carmenschmitt_wpunit_6_7.db
 Dataset Pathname: STKML/pass3.1
 Presentation Format: cndlspec
 Dataset Creation: Sat Jun 02 10:40:41 2018
 Charted by: Depth in Feet scaled 1:240

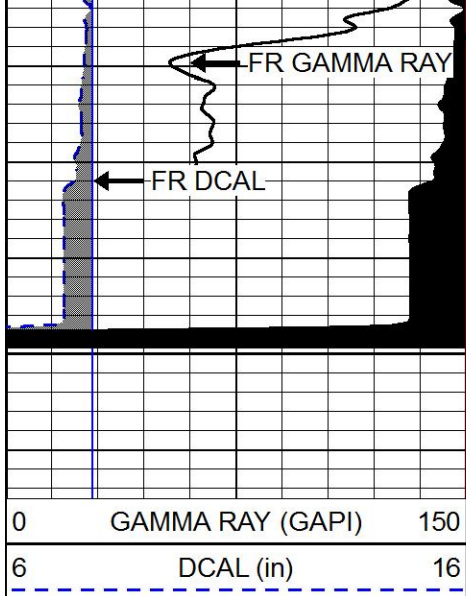






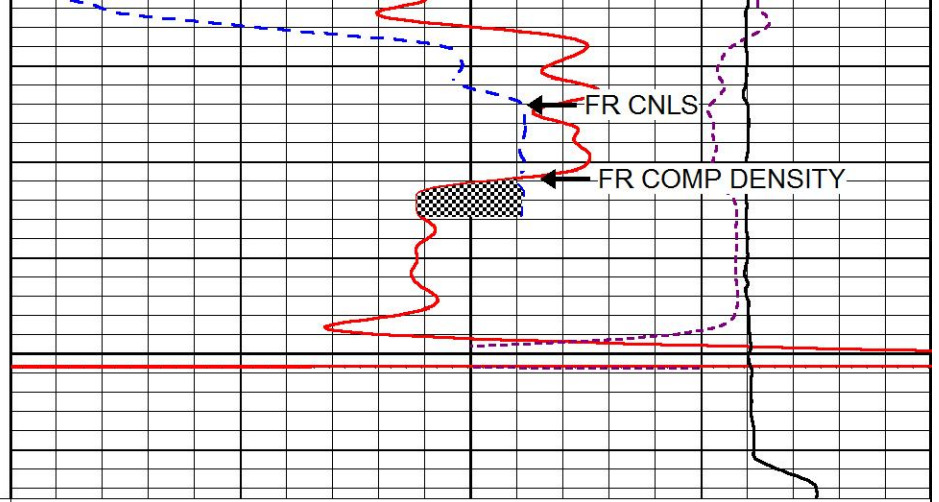






4350

0	GAMMA RAY (GAPI)	150
6	DCAL (in)	16



30	CNLS (pu)	-10
30	COMPENSATED DENSITY 2.71g/cc (pu)	-10
10000	LINE TENSION (lb)	0
-0.75	CORRECTION (g/cc)	0.75

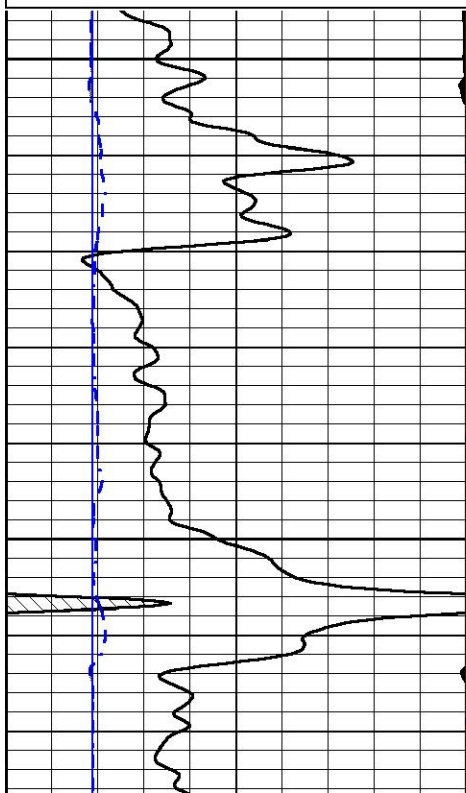


REPEAT SECTION

Database File: carmenschmitt_wpunit_6_7.db
 Dataset Pathname: STKML/pass2.1
 Presentation Format: cndlspec
 Dataset Creation: Sat Jun 02 10:57:23 2018
 Charted by: Depth in Feet scaled 1:240

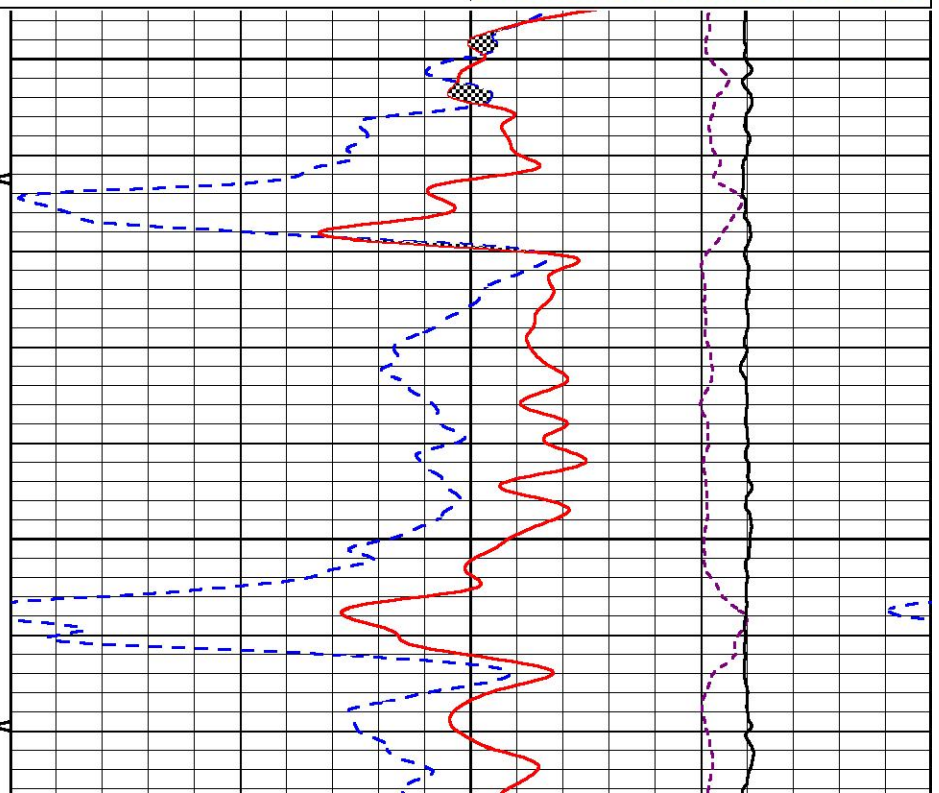
0	GAMMA RAY (GAPI)	150
6	DCAL (in)	16

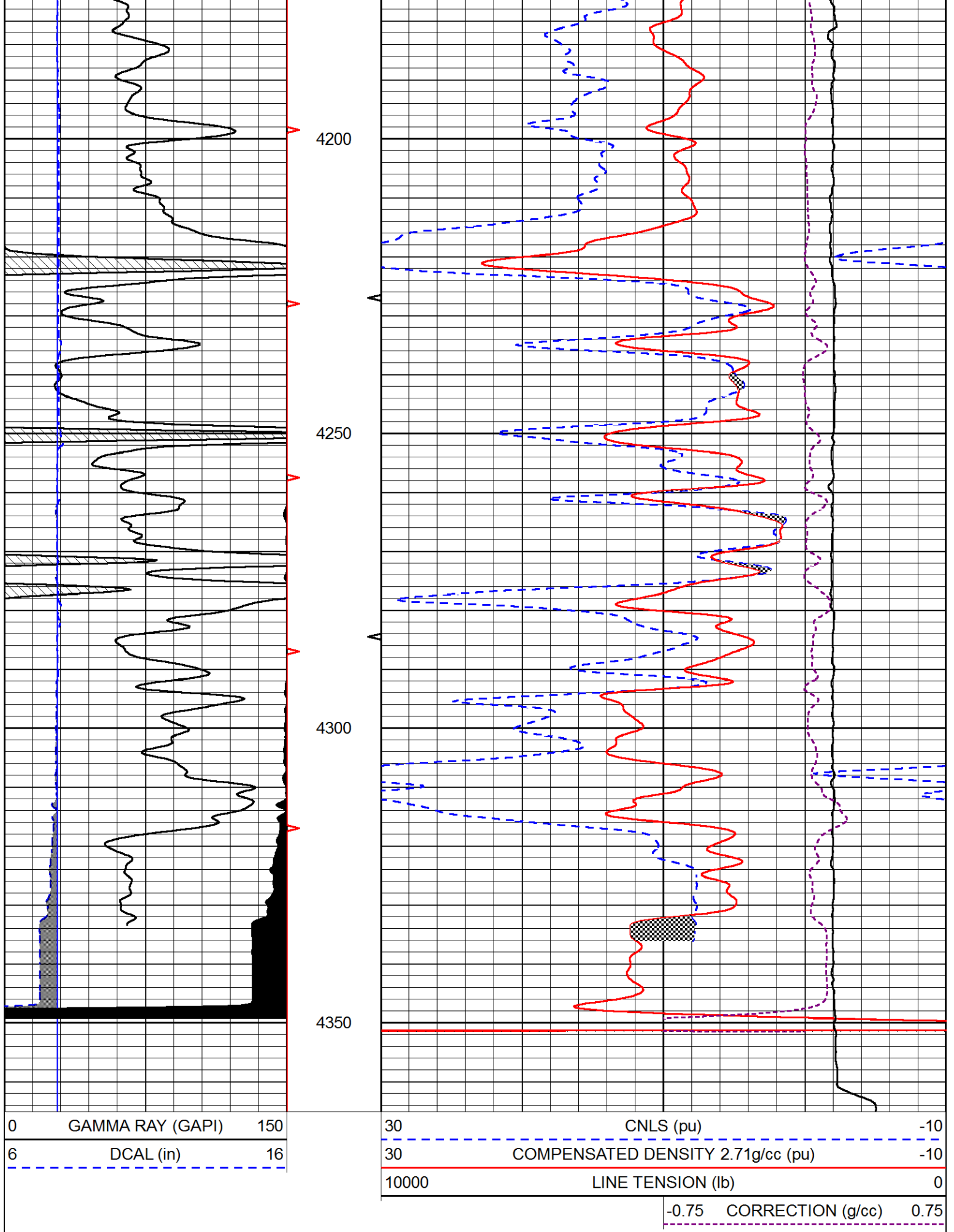
30	CNLS (pu)	-10
30	COMPENSATED DENSITY 2.71g/cc (pu)	-10
10000	LINE TENSION (lb)	0
-0.75	CORRECTION (g/cc)	0.75



4100

4150





Database File carmenschmitt_wpunit_6_7.db
 Dataset Pathname STKML/pass3.1
 Dataset Creation Sat Jun 02 10:40:41 2018

Dual Induction Calibration Report

Serial-Model: PSI 971 HT-PSI HIGH TEMP
 Calibration Performed: Sun May 27 00:33:10 2018

Loop:	Readings		References			Results	
	Air	Loop	Air	Loop		Gain	Offset
Deep	167.000	835.000	0.000	255.800	mmho/m	0.430	-30.000
Medium	0.000	1348.000	142.000	255.800	mmho/m	0.375	-30.000

Microlog Calibration Report

Serial-Model: PSI-01-PSIML
 Performed: Sun May 27 00:33:27 2018

	Readings		References			Results	
	Zero	Cal	Zero	Cal		m	b
Normal	0.0000	1.0000	0.0000	1.0000	Ohm-m	29000.0000	-1.0000
Inverse	0.0000	1.0000	0.0000	1.0000	Ohm-m	30000.0000	-0.6000
Caliper	1.0001	1.1397	6.5000	18.5000	in	70.0000	-65.8000

Compensated Density Calibration Report

Serial-Model: 817-947-M&W
 Source / Verifier: 16955B / 2ci
 Master Calibration Performed: Tue May 01 14:00:17 2018

Master Calibration

	Density		Far Detector	Near Detector	
Magnesium	1.755	g/cc	6127.15	5922.31	cps
Aluminum	2.650	g/cc	1141.85	3762.09	cps
Spine Angle = 74.89			Density/Spine Ratio = 0.514		
	Size		Reading		
Small Ring	4.50	in	1.02		
Large Ring	15.00	in	1.15		

Compensated Neutron Calibration Report

Serial Number: 207-MW
 Tool Model: M&W
 Calibration Performed: MON APR 16 10:30:30 2018

Detector	Readings	Target	Normalization
Short Space	6240.00 cps	1000.00 cps	1.6025
Long Space	460.00 cps	1000.00 cps	1.9500

Gamma Ray Calibration Report

Serial Number: 89
Tool Model: M&W
Calibration Performed: Mon Jan 15 11:20:44 2018

Calibrator Value: 1.0 GAPI

Background Reading: 0.0 cps
Calibrator Reading: 1.0 cps

Sensitivity: 0.6000 GAPI/cps



PIONEER
Pioneer Energy Services

Company CARMEN SCHMITT, INC.
Well WP UNIT #6-7
Field WILDCAT
County TREGO
State KANSAS