



MICRO LOG

Company TRIPLE CROWN OPERATING, LLC.
 Well COX #2-35
 Field COUNTY LINE
 County NESS
 State KANSAS

Company TRIPLE CROWN OPERATING, LLC.
 Well COX #2-35
 Field COUNTY LINE
 County NESS
 State KANSAS

Location: API # : 15-135-26091-0000
 1483' FSL & 1062' FVL
 SE - SE - NW - SW
 SEC 35 TWP 20S RGE 22W
 Permanent Datum GROUND LEVEL Elevation 2165
 Log Measured From KELLY BUSHING 5' A.G.L.
 Drilling Measured From KELLY BUSHING
 Other Services CDL/CNL DIL
 Elevation K.B. 2170 D.F. 2168 G.L. 2165

Date	3/27/20
Run Number	TWO
Depth Driller	4407
Depth Logger	4406
Bottom Logged Interval	4404
Top Log Interval	3400
Casing Driller	8 5/8" @ 1375'
Casing Logger	1378
Bit Size	7 7/8"
Type Fluid in Hole	CHEMICAL MUD
Density / Viscosity	9.2/48
pH / Fluid Loss	9.5/8.8
Source of Sample	FLOWLINE
Rim @ Meas. Temp	.500 @ 80F
Rmf @ Meas. Temp	.375 @ 80F
Rmc @ Meas. Temp	.600 @ 80F
Source of Rmf / Rmc	MEASUREMENT
Rim @ BHT	.333 @ 120F
Time Circulation Stopped	3.5 HOURS
Time Logger on Bottom	8:00 P.M.
Maximum Recorded Temperature	120F
Equipment Number	922339
Location	HAYS, KANSAS
Recorded By	JEFF LUEBBERS
Witnessed By	SEAN DEENIHAN

<<< Fold Here >>>

All interpretations are opinions based on inferences from electrical or other measurements and we cannot and do not guarantee the accuracy or correctness of any interpretation, and we shall not, except in the case of gross or willful negligence on our part, be liable or responsible for any loss, costs, damages, or expenses incurred or sustained by anyone resulting from any interpretation made by any of our officers, agents or employees. These interpretations are also subject to our general terms and conditions set out in our current Price Schedule.

Comments

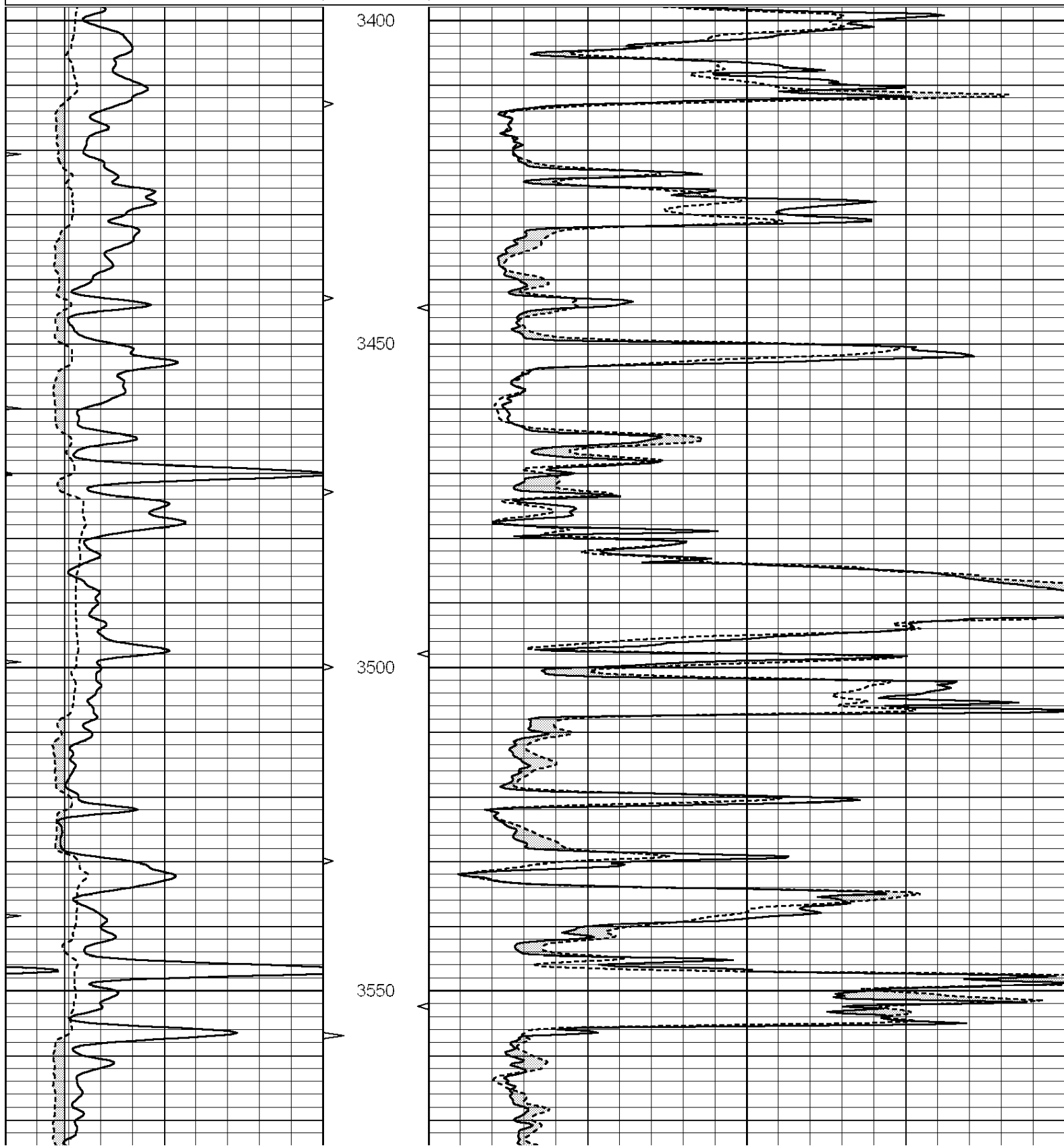
THANK YOU FOR USING ELI WIRELINE HAYS, KANSAS (785) 628-6395
 DIRECTIONS
 BAZINE, KS., 2W. ON HWY 96 TO "RD. BB", 13S., E. INTO

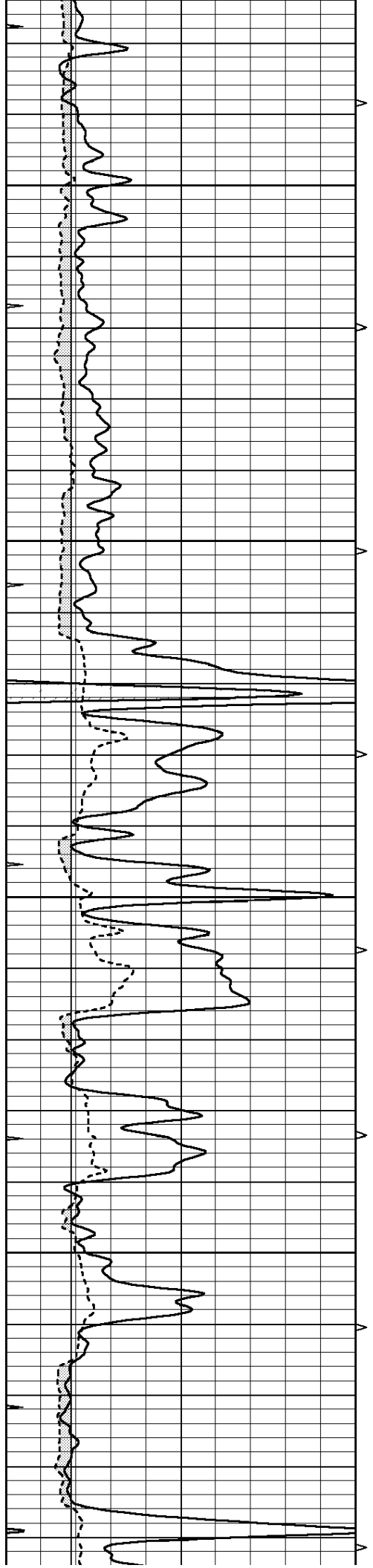


MAIN SECTION

Database File: 4540ddn.db
 Dataset Pathname: pass7.4
 Presentation Format: micro
 Dataset Creation: Fri Mar 27 21:09:16 2020
 Charted by: Depth in Feet scaled 1:240

0	GAMMA RAY (GAPI)	150	ABHV	0	MEL1.5 (Ohm-m)	40
6	CALIPER (in)	16	10 (ft3)	0	MEL 20 (Ohm-m)	40
0	MINMK	20	TBHV			
			0 (ft3)	10		



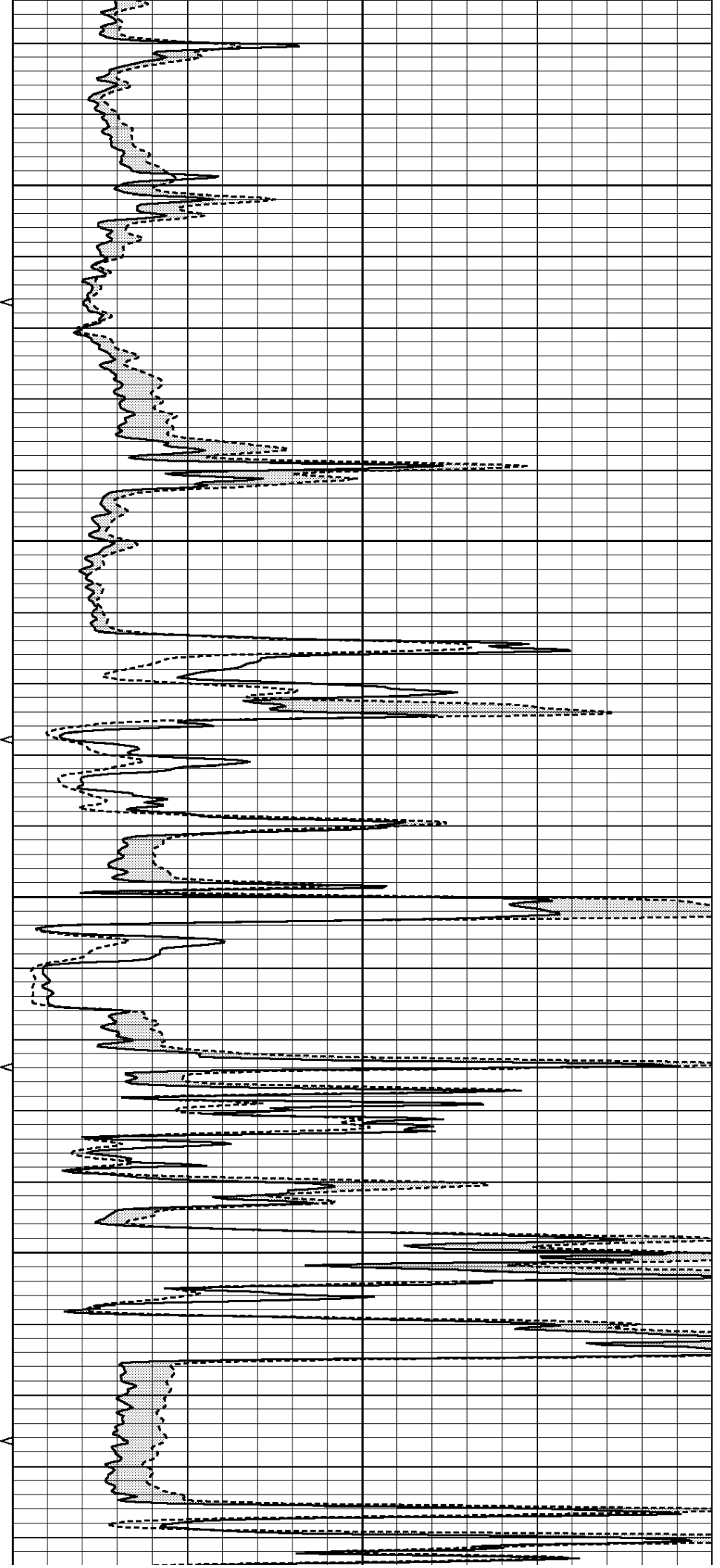


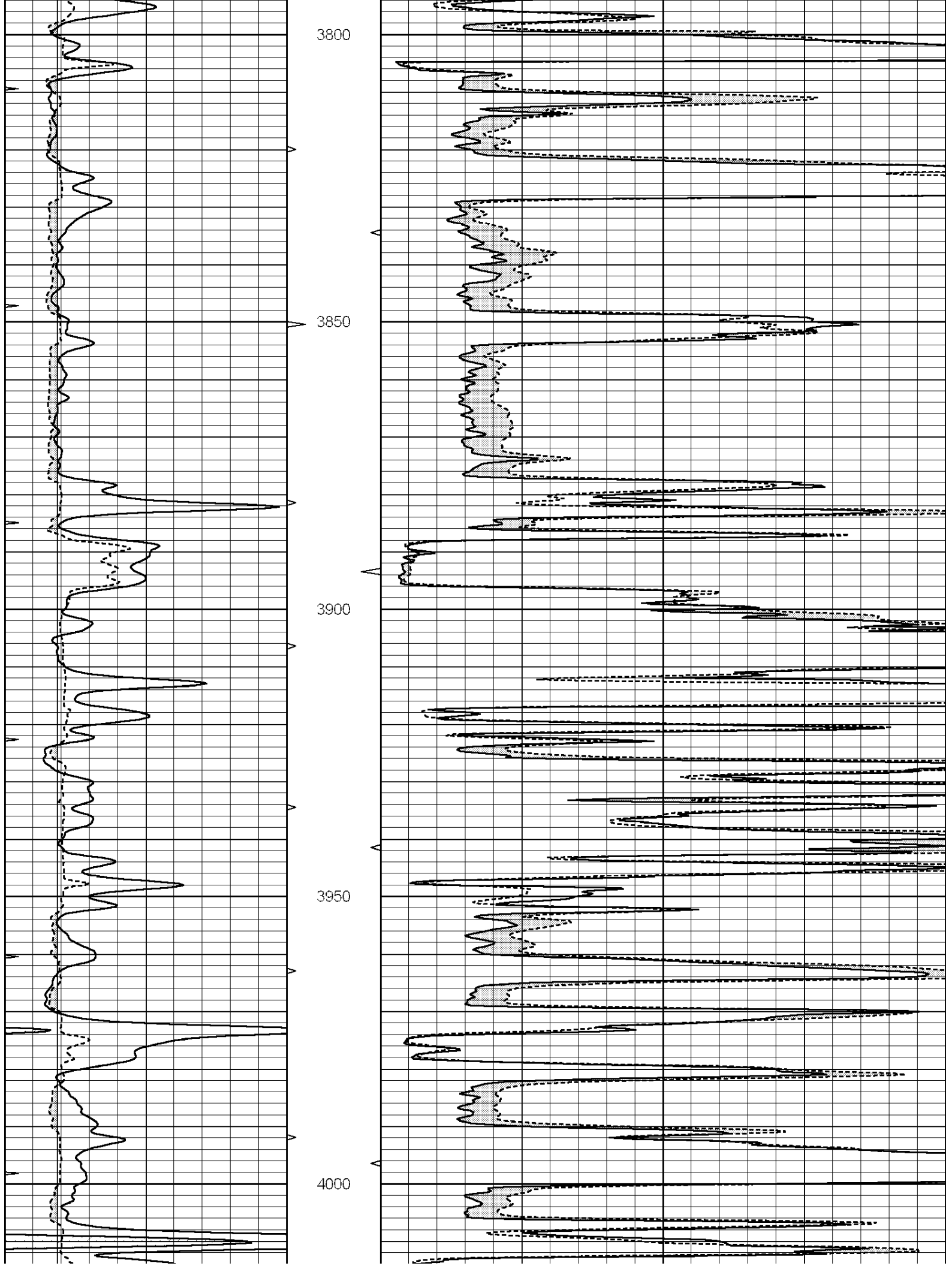
3600

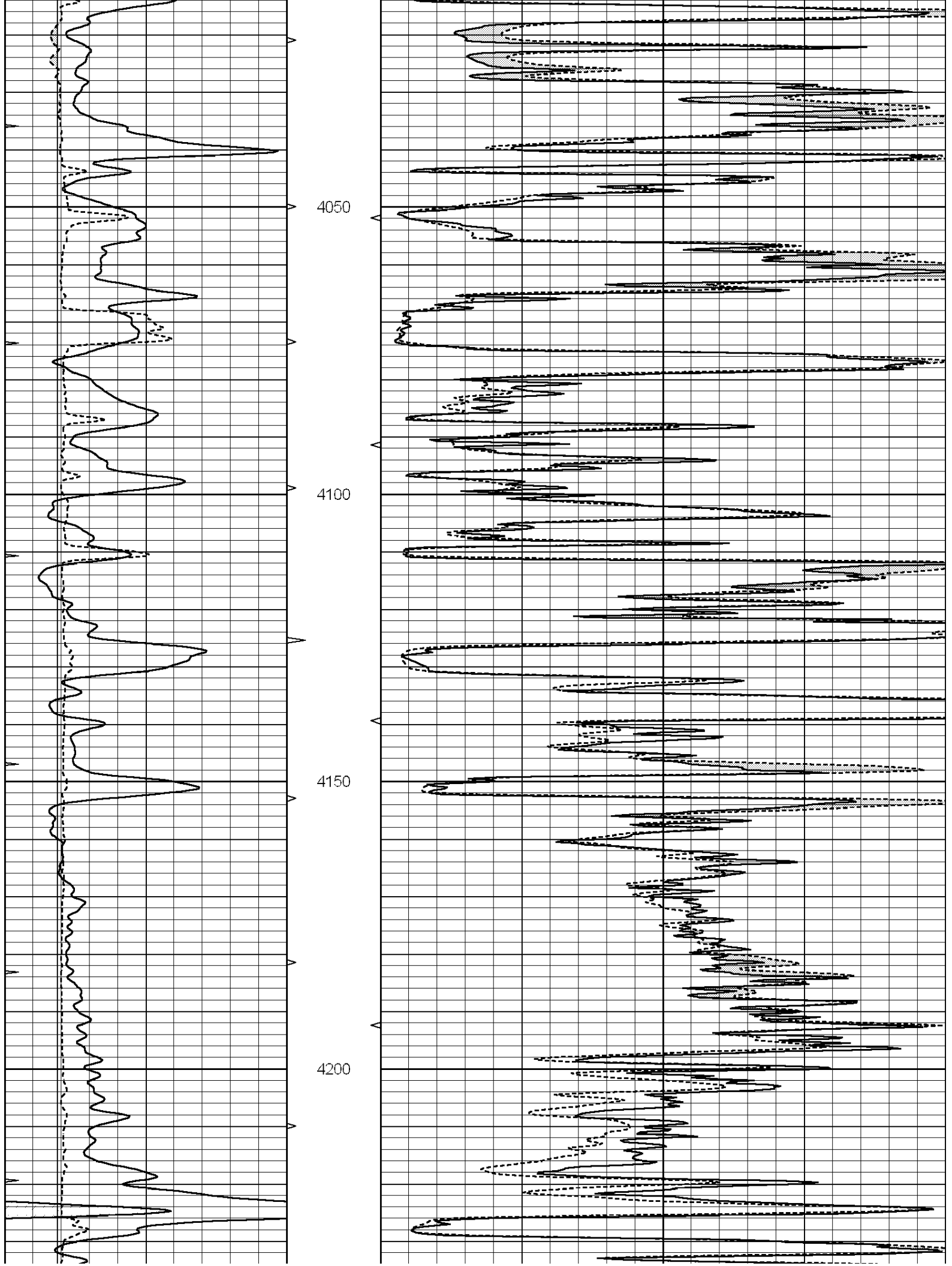
3650

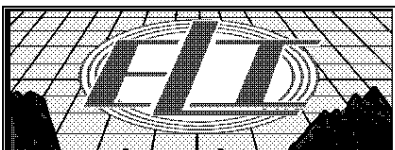
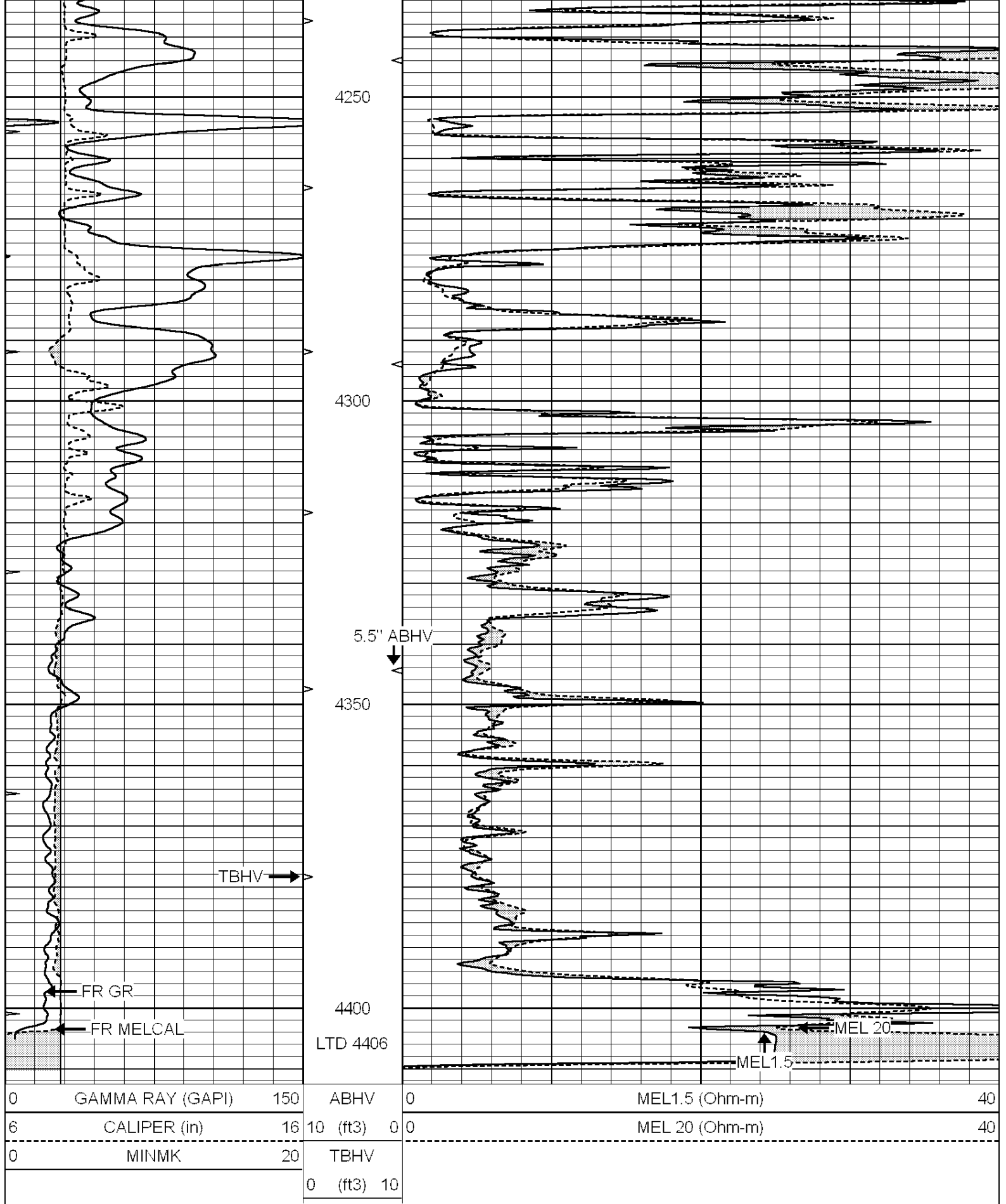
3700

3750





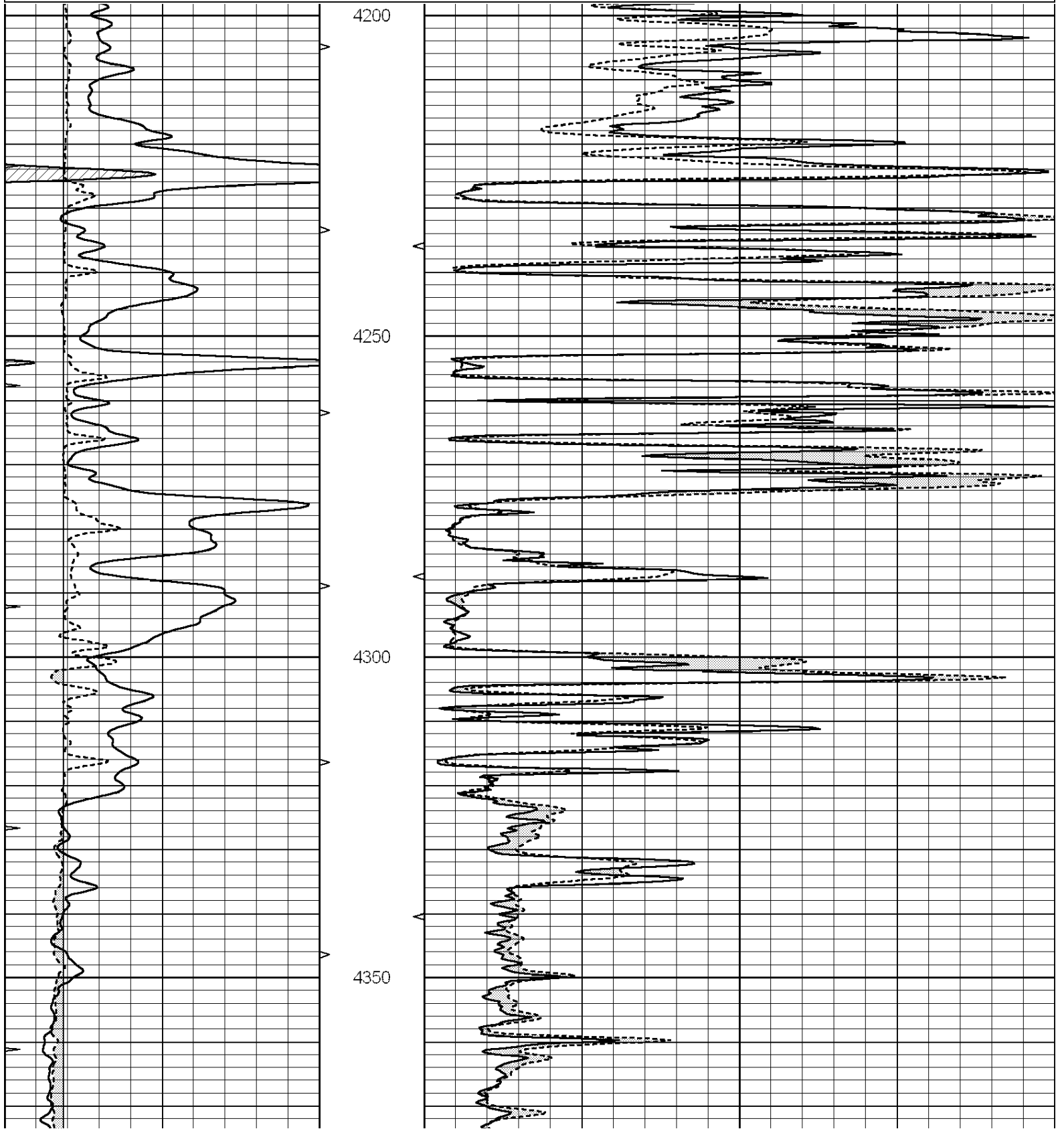


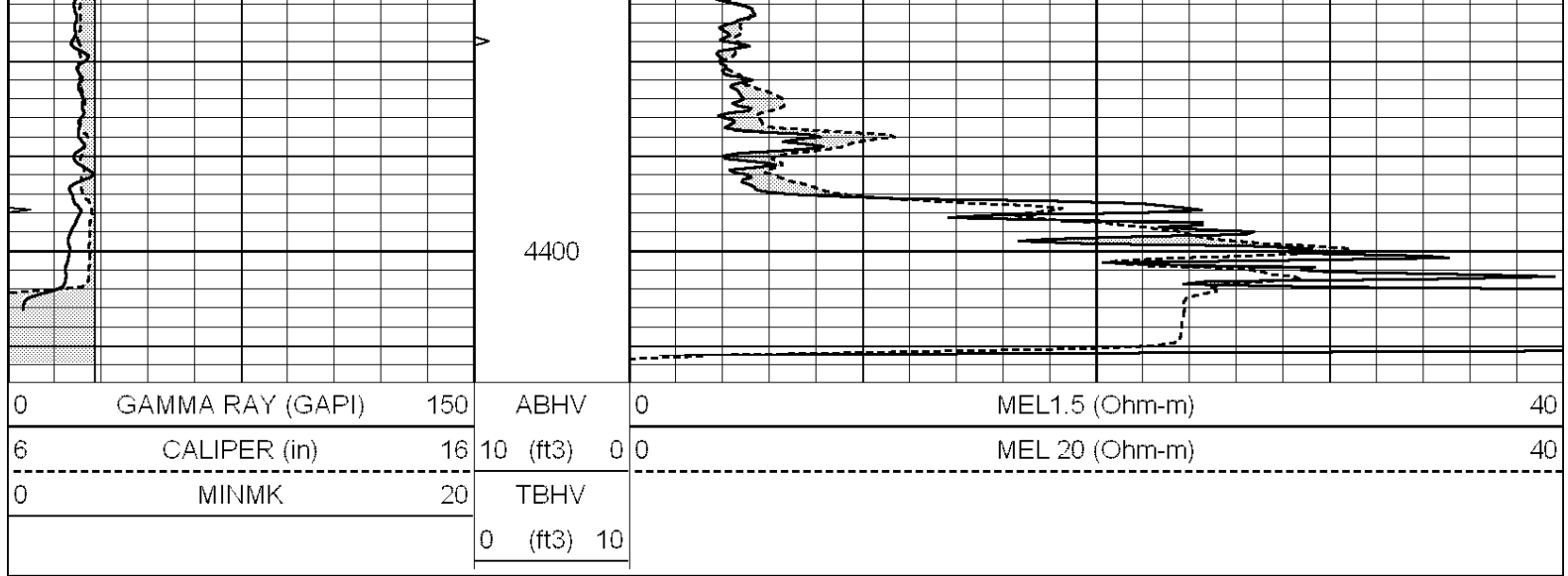


REPEAT SECTION

Database File: 4540ddn.db
 Dataset Pathname: pass6.4
 Presentation Format: micro
 Dataset Creation: Fri Mar 27 21:03:01 2020 by Calc SOC 120430
 Charted by: Depth in Feet scaled 1:240

0	GAMMA RAY (GAPI)	150	ABHV	0	MEL1.5 (Ohm-m)	40
6	CALIPER (in)	16	10 (ft3)	0 0	MEL 20 (Ohm-m)	40
0	MINMK	20	TBHV			
			0 (ft3)	10		





Calibration Report

Database File: 4540ddn.db
 Dataset Pathname: pass7.4
 Dataset Creation: Fri Mar 27 21:09:16 2020

MICRO Calibration Report

Serial Number: 070912
 Tool Model: ProbeN
 Performed: Thu Mar 19 22:11:39 2020

Caliper Calibration: Gain=4.109 Offset=-0.488

References	Low Cal	High Cal
Readings	7.400	18.000
	1.920	4.500

1.5" Calibration: Gain=42.000 Offset=-0.600

References	Low Cal	High Cal
Readings	0.000	20.000
	0.002	1.239

2" Calibration: Gain=46.000 Offset=-0.500

References	Low Cal	High Cal
Readings	0.000	20.000
	0.003	1.075

Gamma Ray Calibration Report

Serial Number: 070559
 Tool Model: OPEN_GR
 Performed: Fri Mar 27 20:37:37 2020

Calibrator Value: 1.0 GAPI

Background Reading: 0.0 cps
 Calibrator Reading: 1.0 cps

Sensitivity: 0.3000 GAPI/cps