



**COMPENSATED
DENSITY / NEUTRON
PE LOG**

Company WHITE EXPLORATION, INC.
Well #2 CARGILL SWD
Field PIKE NORTHWEST
County BARBER
State KANSAS

Company WHITE EXPLORATION, INC.
Well #2 CARGILL SWD
Field PIKE NORTHWEST
County BARBER State KANSAS

Location: 660' FSL & 1980' FWL
C - SE - SW
APL # : 15-007-21288-0001
Other Services DIL
Permanent Datum GROUND LEVEL Elevation 1610
Log Measured From KELLY BUSHING 7' A.G.L.
Drilling Measured From KELLY BUSHING
Elevation
K.B. 1617
D.F. 1615
G.L. 1610

Date	8/8/18		
Run Number	ONE		
Depth Driller	5040		
Depth Logger	5040		
Bottom Logged Interval	5016		
Top Log Interval	3300		
Casing Driller	8 5/8" @ 327'		
Casing Logger	330		
Bit Size	7 7/8"		
Type Fluid in Hole	CHEMICAL MUD	CHLORIDES 8,000 PPM	
Density / Viscosity	9.3/57		
pH / Fluid Loss	9.5/14.4		
Source of Sample	FLOWLINE		
Rim @ Meas. Temp	.400 @ 90F		
Rmf @ Meas. Temp	.300 @ 90F		
Rmc @ Meas. Temp	.480 @ 90F		
Source of Rmf / Rmc	MEASUREMENT		
Rim @ BHT	.288 @ 125F		
Time Circulation Stopped	3 HOURS		
Time Logger on Bottom	2:00 A.M.		
Maximum Recorded Temperature	125F		
Equipment Number	922339		
Location	HAYS, KANSAS		
Recorded By	JEFF LUEBBERS		
Witnessed By	ANDY WHITE		

<<< Fold Here >>>

All interpretations are opinions based on inferences from electrical or other measurements and we cannot and do not guarantee the accuracy or correctness of any interpretation, and we shall not, except in the case of gross or willful negligence on our part, be liable or responsible for any loss, costs, damages, or expenses incurred or sustained by anyone resulting from any interpretation made by any of our officers, agents or employees. These interpretations are also subject to our general terms and conditions set out in our current Price Schedule.

Comments

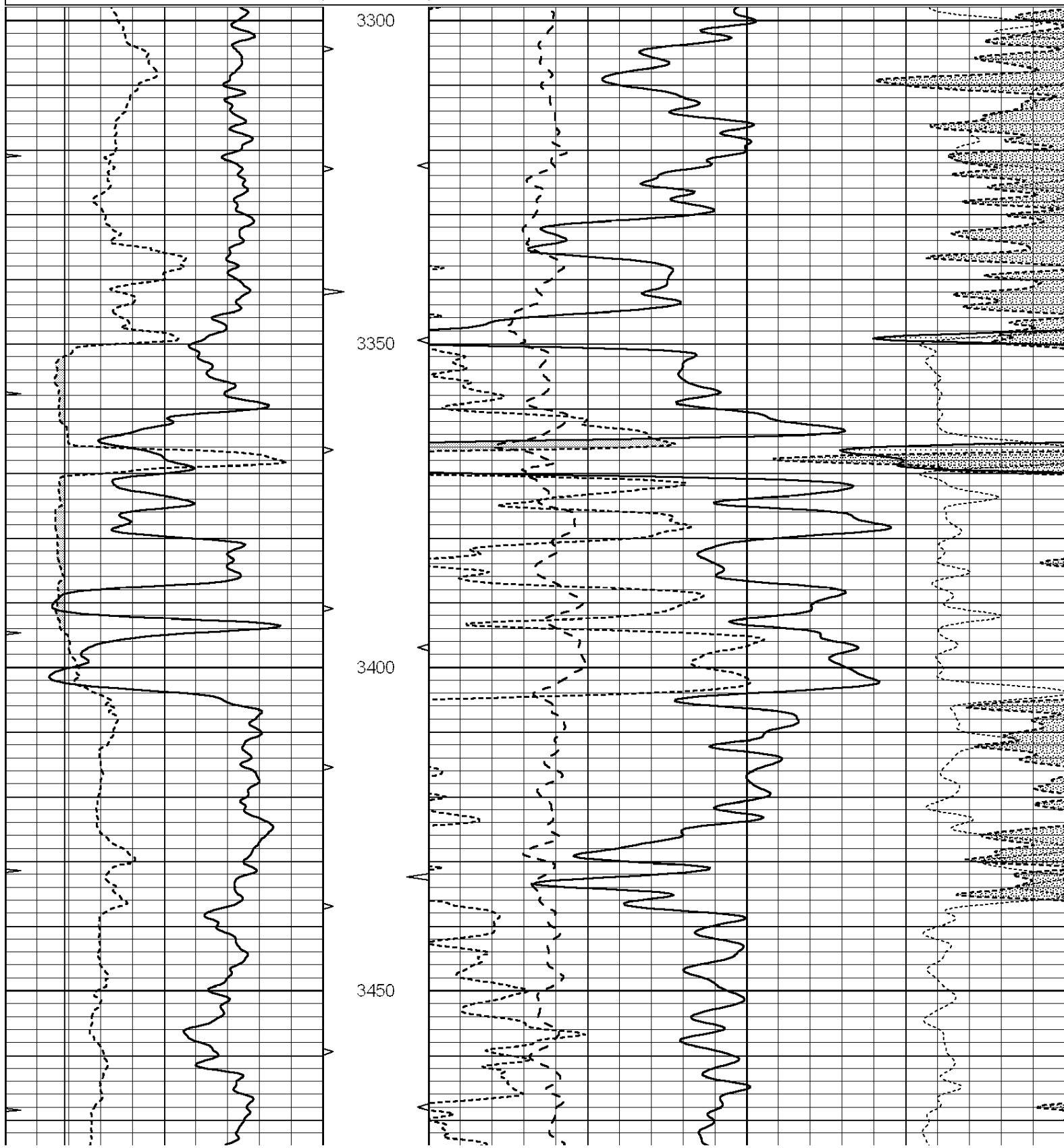
THANK YOU FOR USING ELI WIRELINE HAYS, KANSAS (785) 628-6395
DIRECTIONS
MEDICINE LODGE, KS., 3N. ON HWY 281 TO "GRANDVIEW RD.", 1W. THROUGH 2 CATTLE GUARDS,
VEER SOUTH AND FOLLOW FENCE LINE

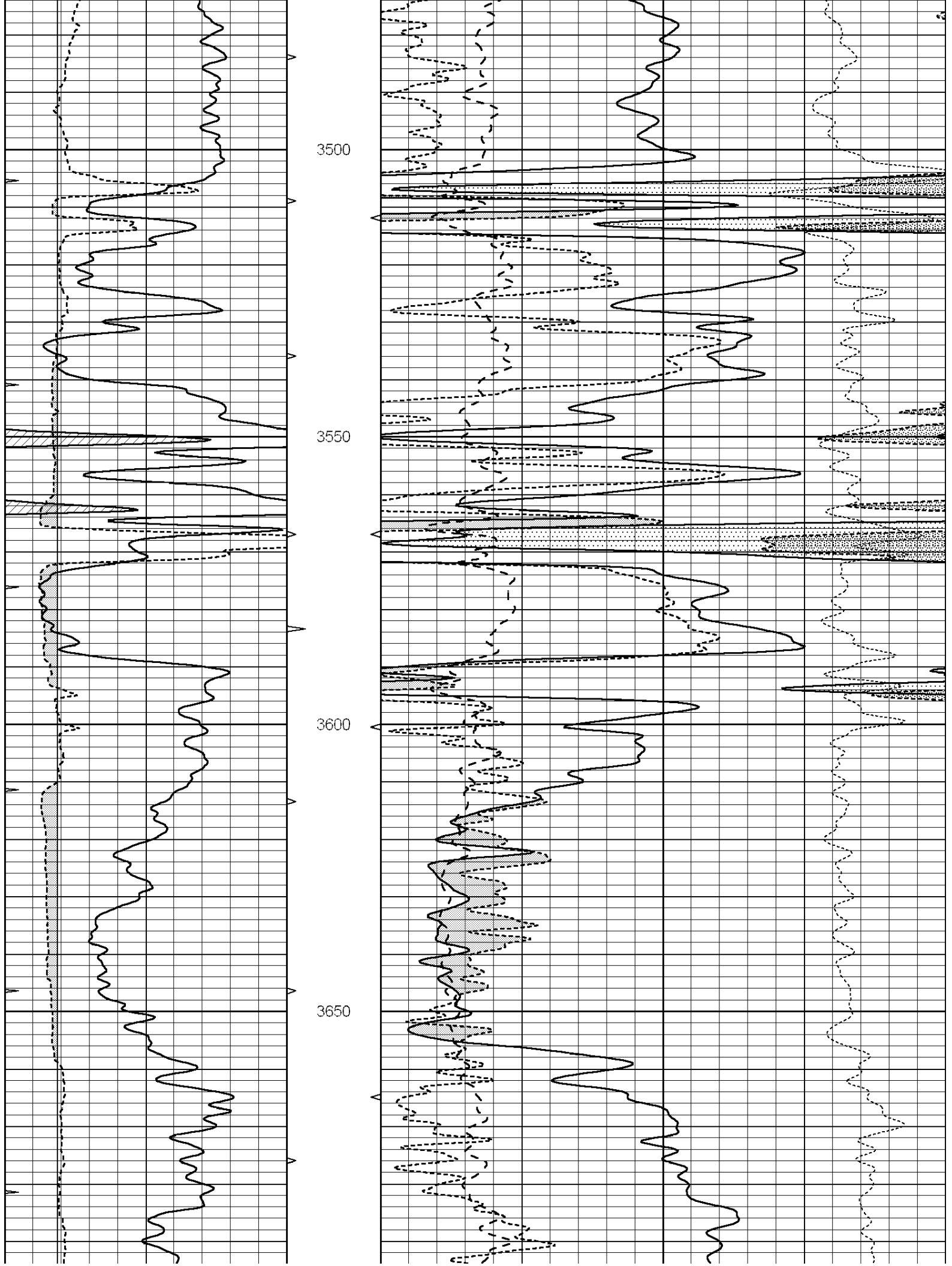


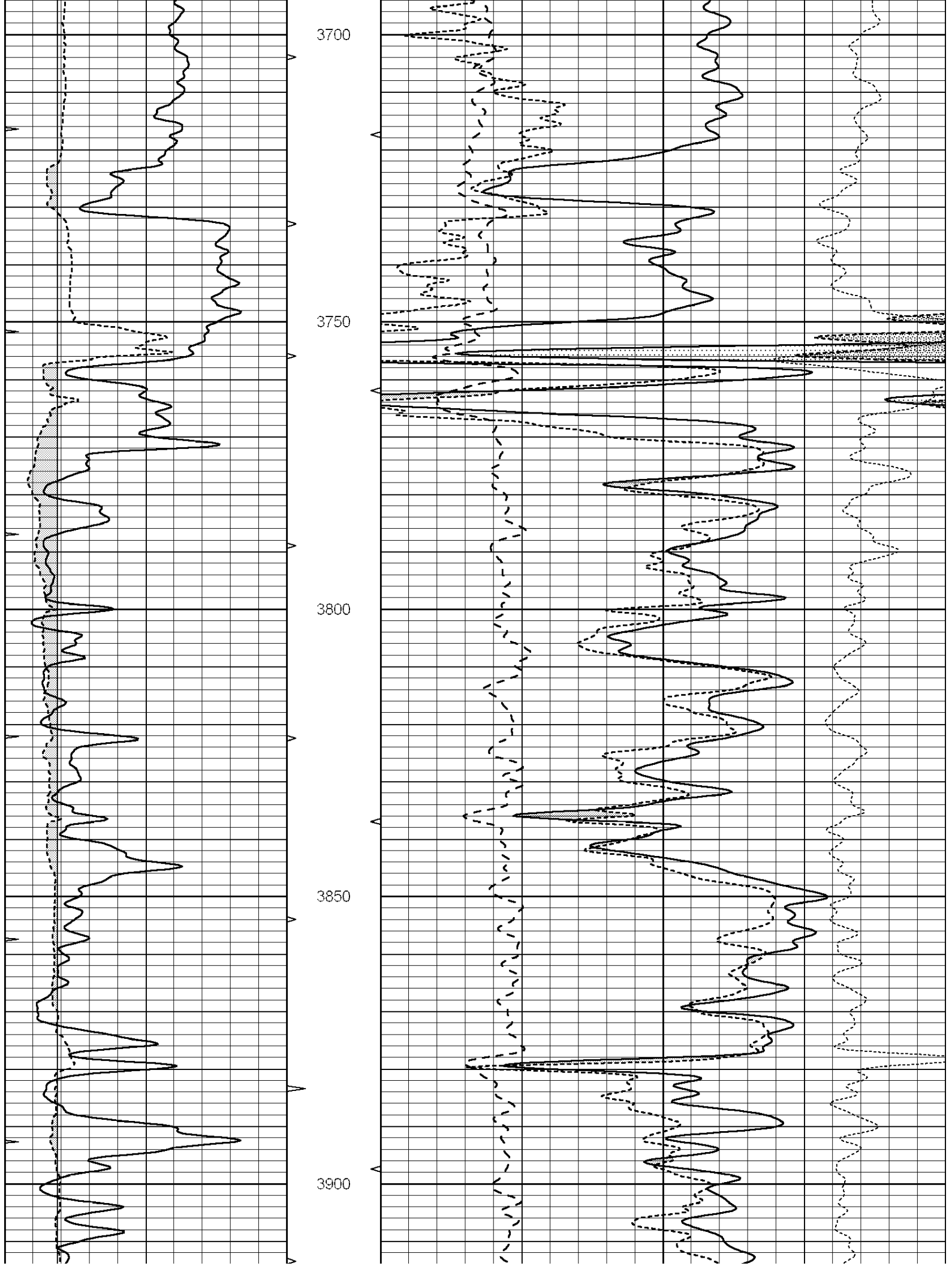
MAIN SECTION

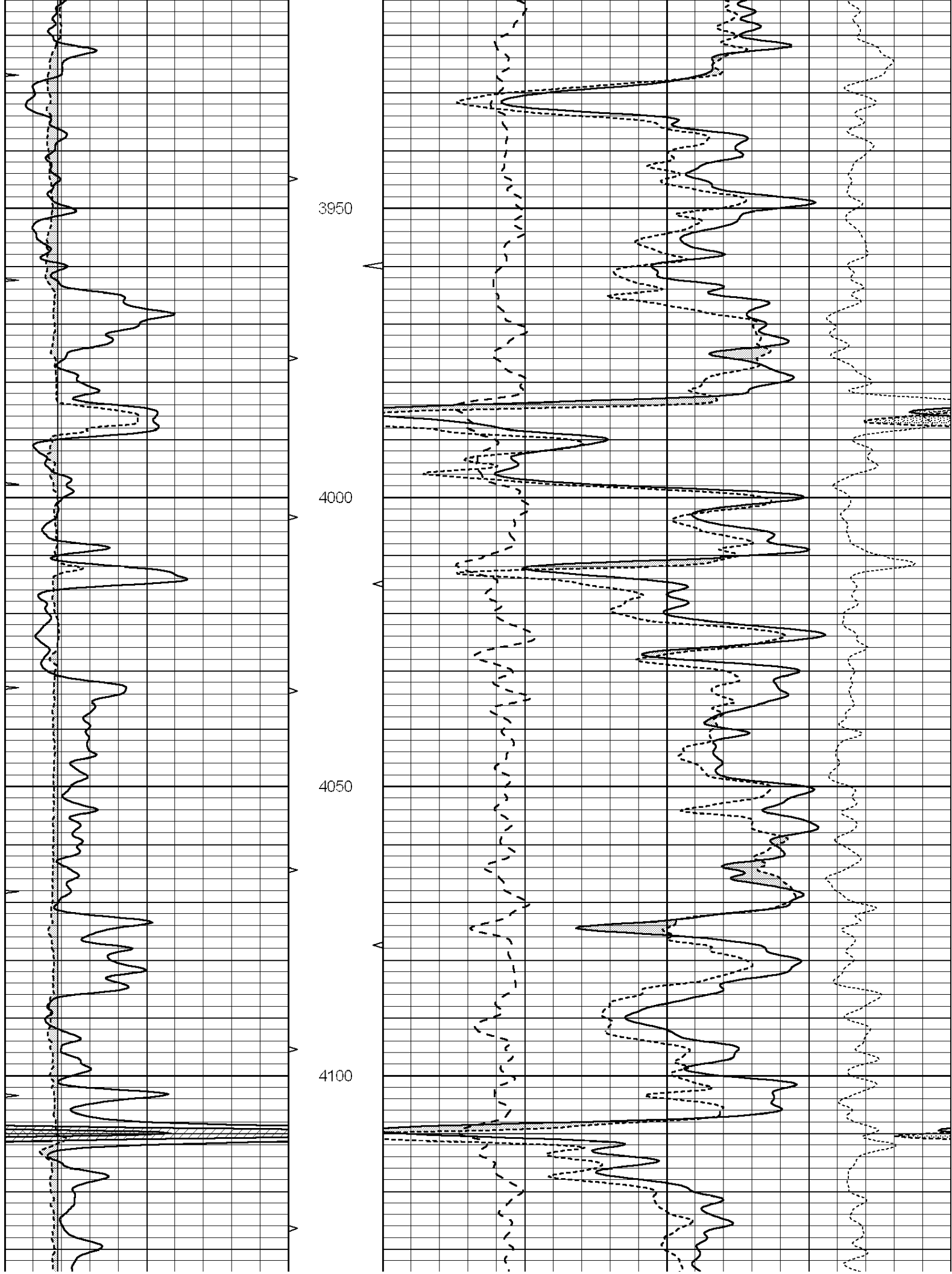
Database File: 2671pe.db
 Dataset Pathname: pass3.6
 Presentation Format: ldt_neu
 Dataset Creation: Wed Aug 08 04:44:59 2018
 Charted by: Depth in Feet scaled 1:240

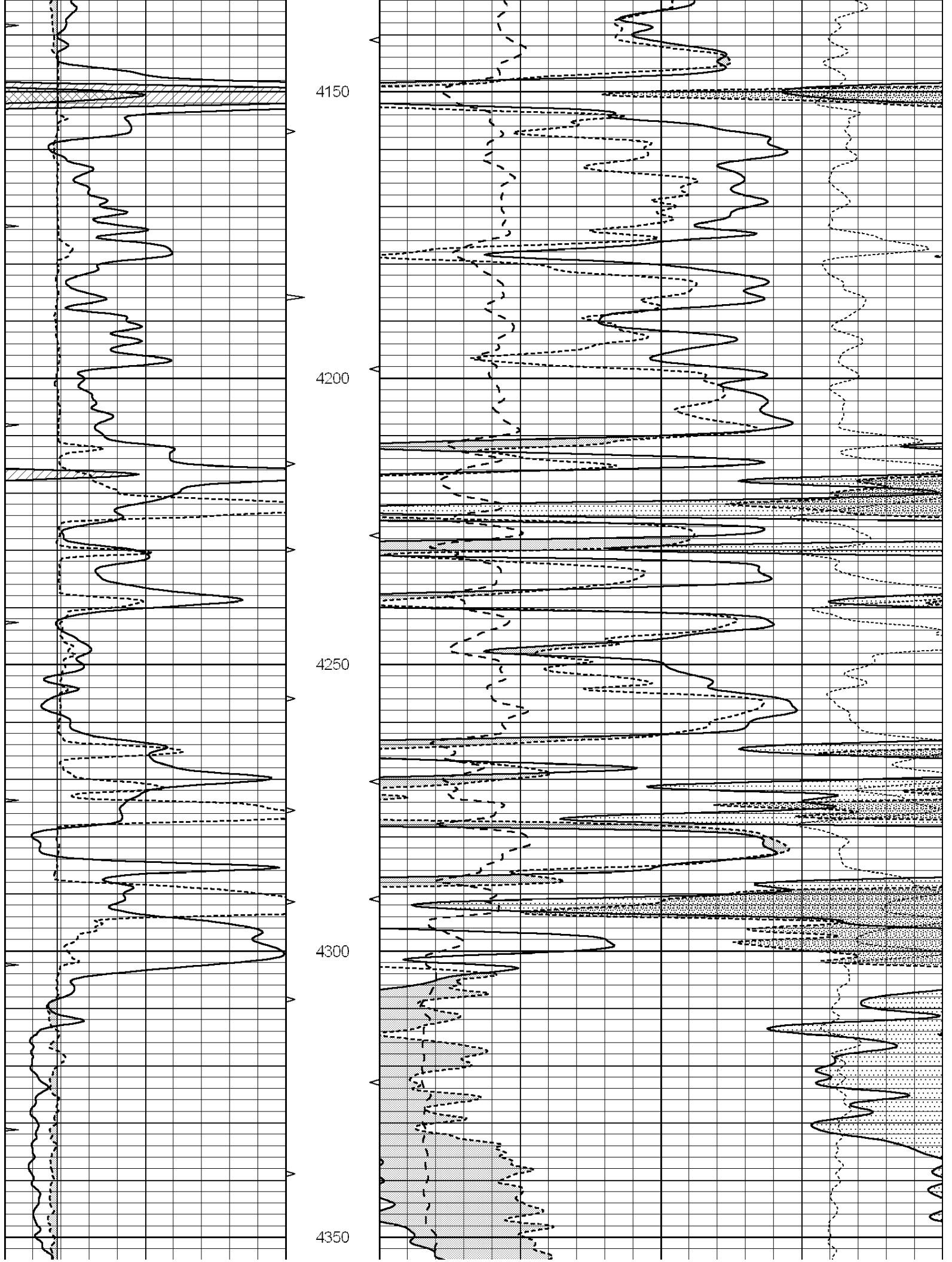
0	GAMMA RAY (GAPI)	150	ABHV	30	COMPENSATED DENSITY (pu)			-10	
6	CALIPER (in)	16	10 (ft3)	0	30	COMPENSATED NEUTRON (pu)			-10
0	MINMK	20	TBHV	0	PE	10	-0.25	CORRECTION (g/cc)	0.25
			0 (ft3)	10					

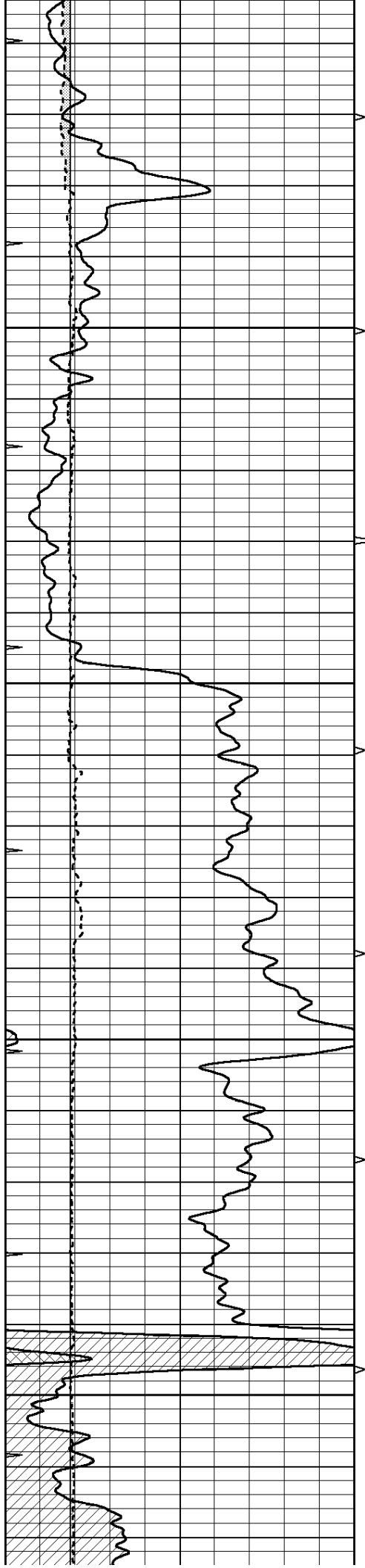










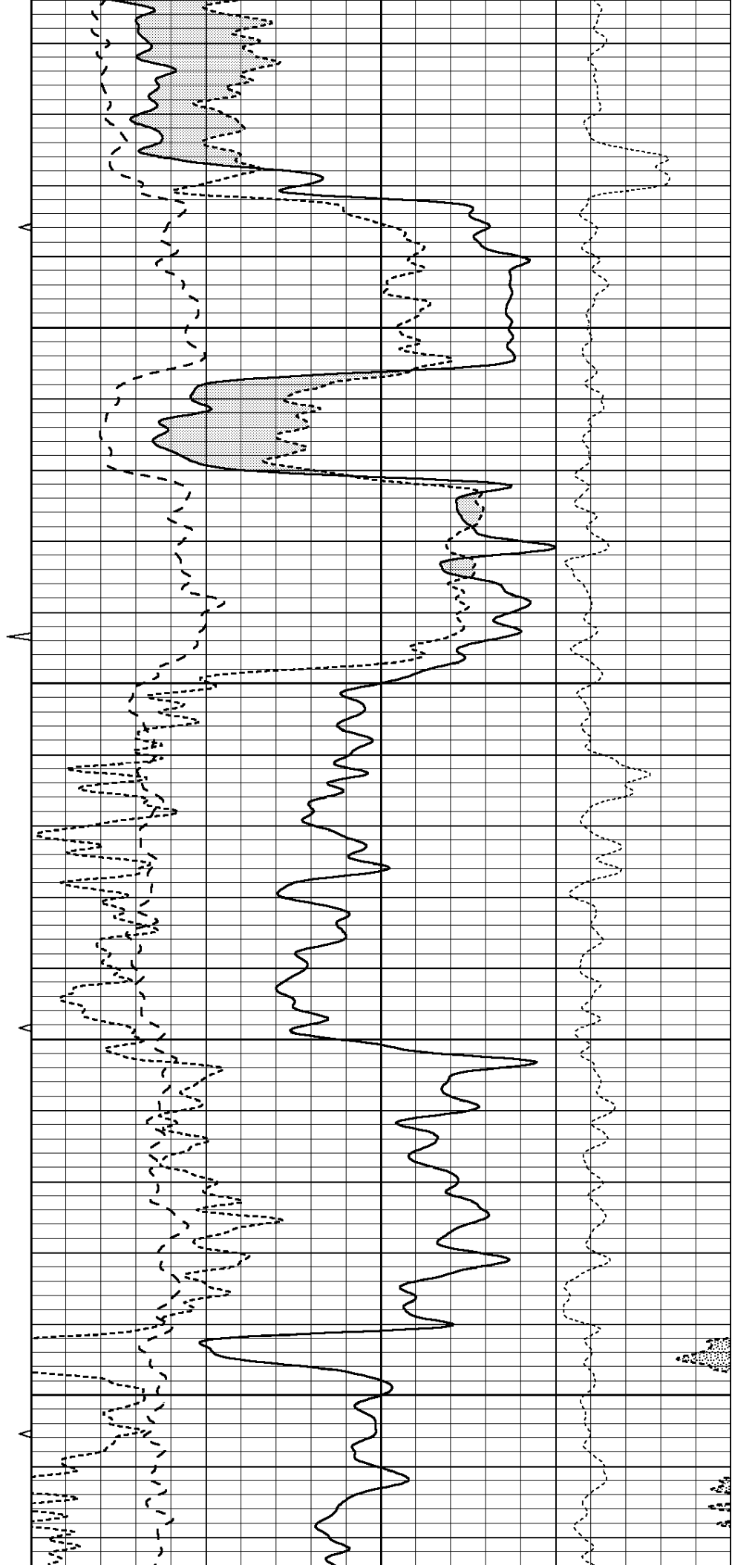


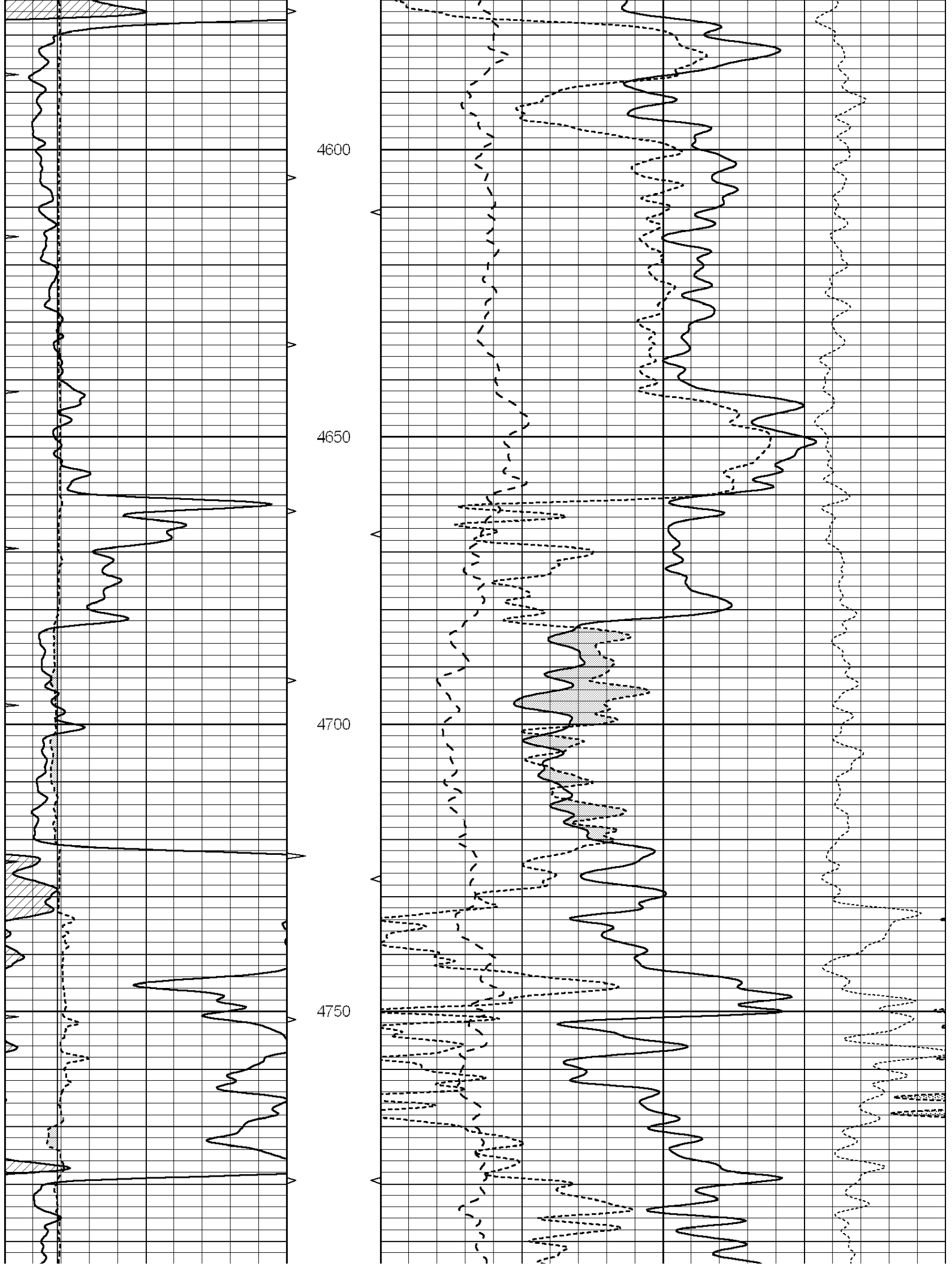
4400

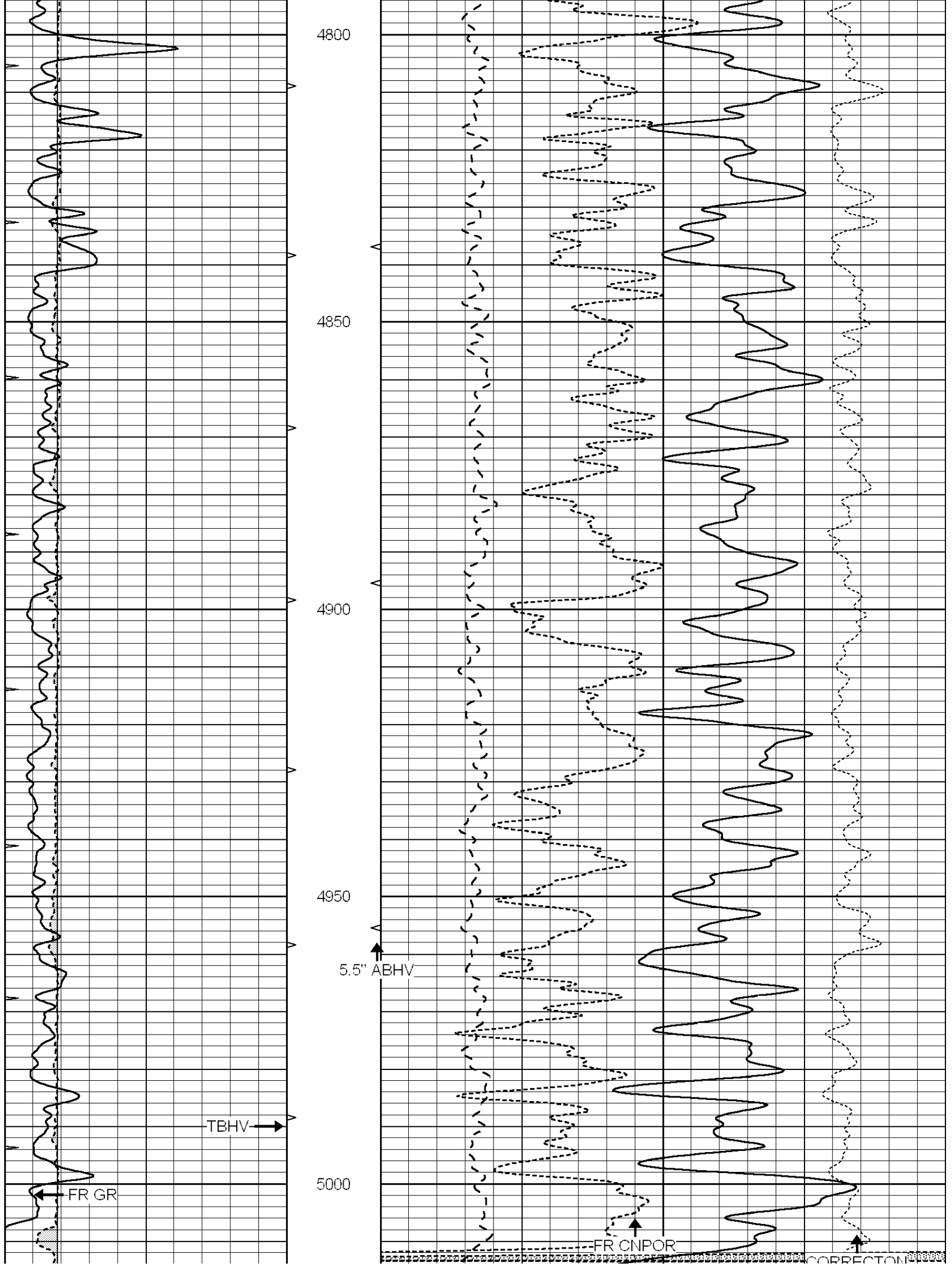
4450

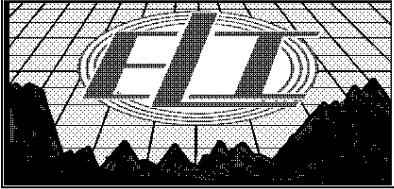
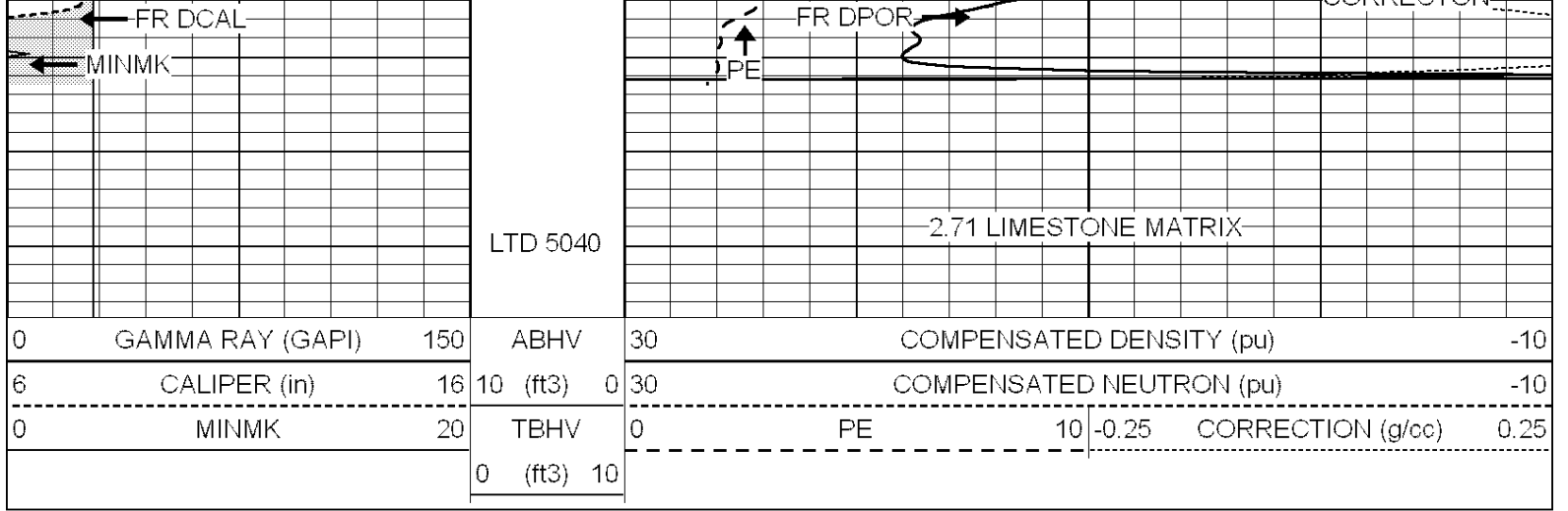
4500

4550





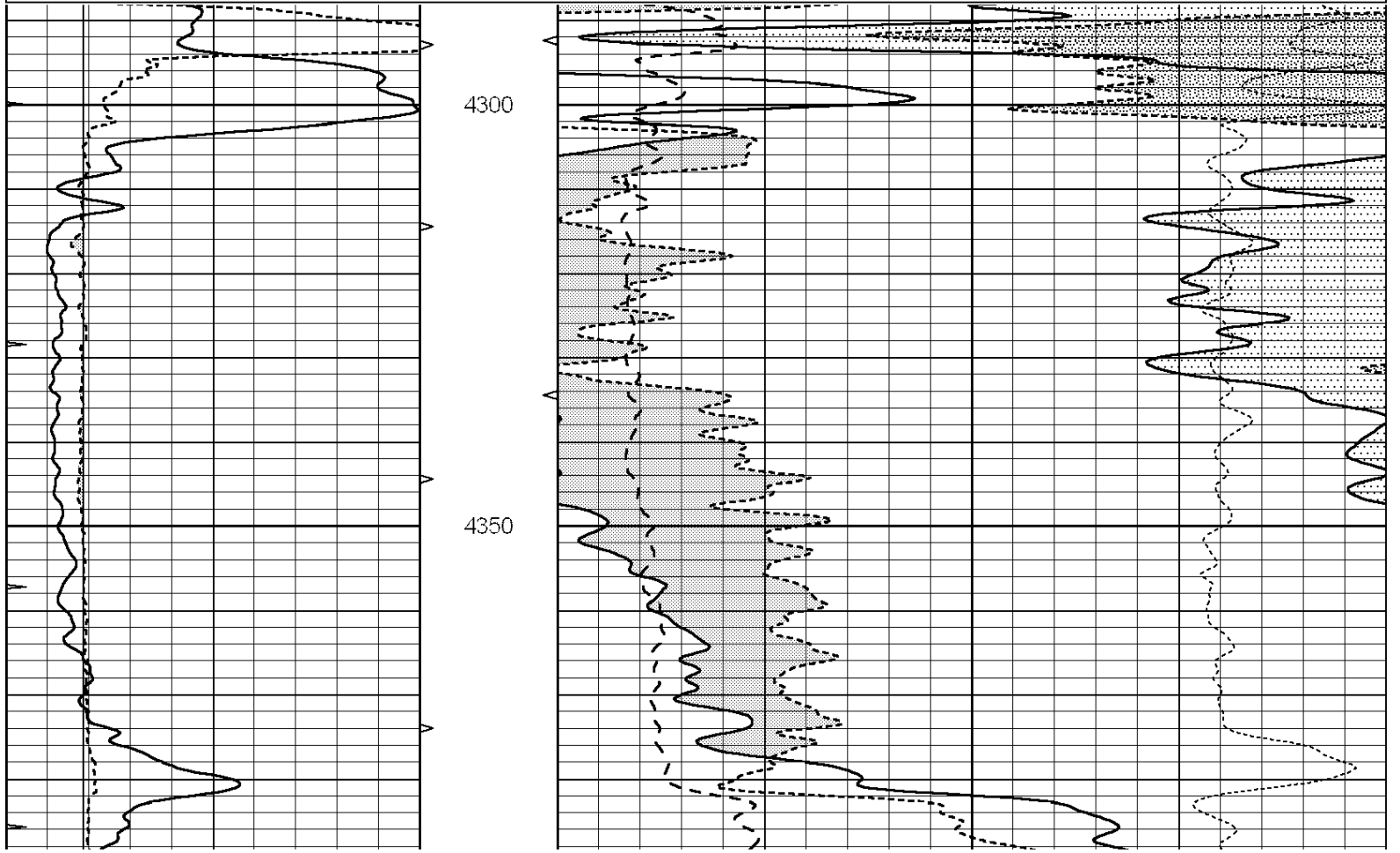


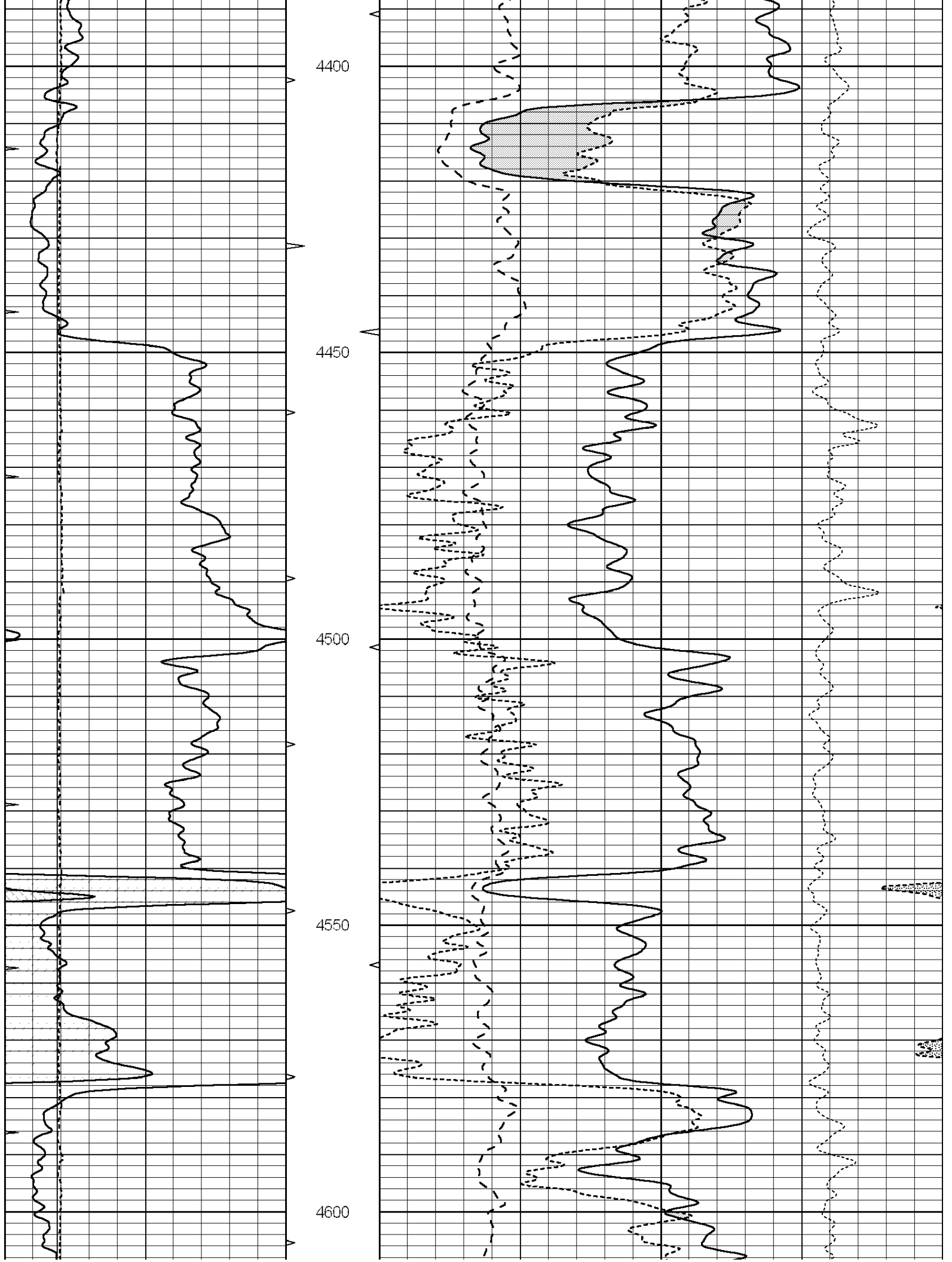


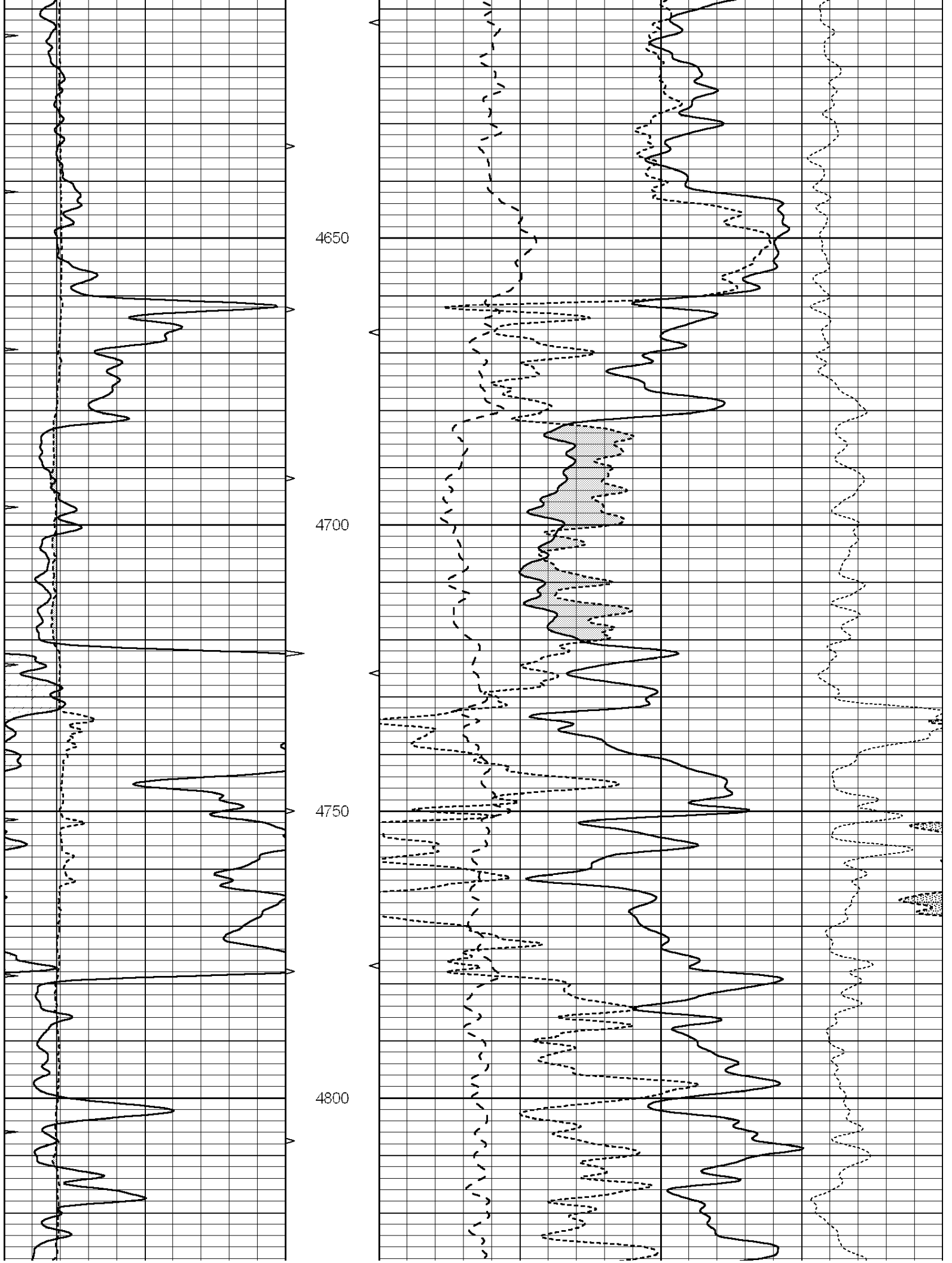
REPEAT SECTION

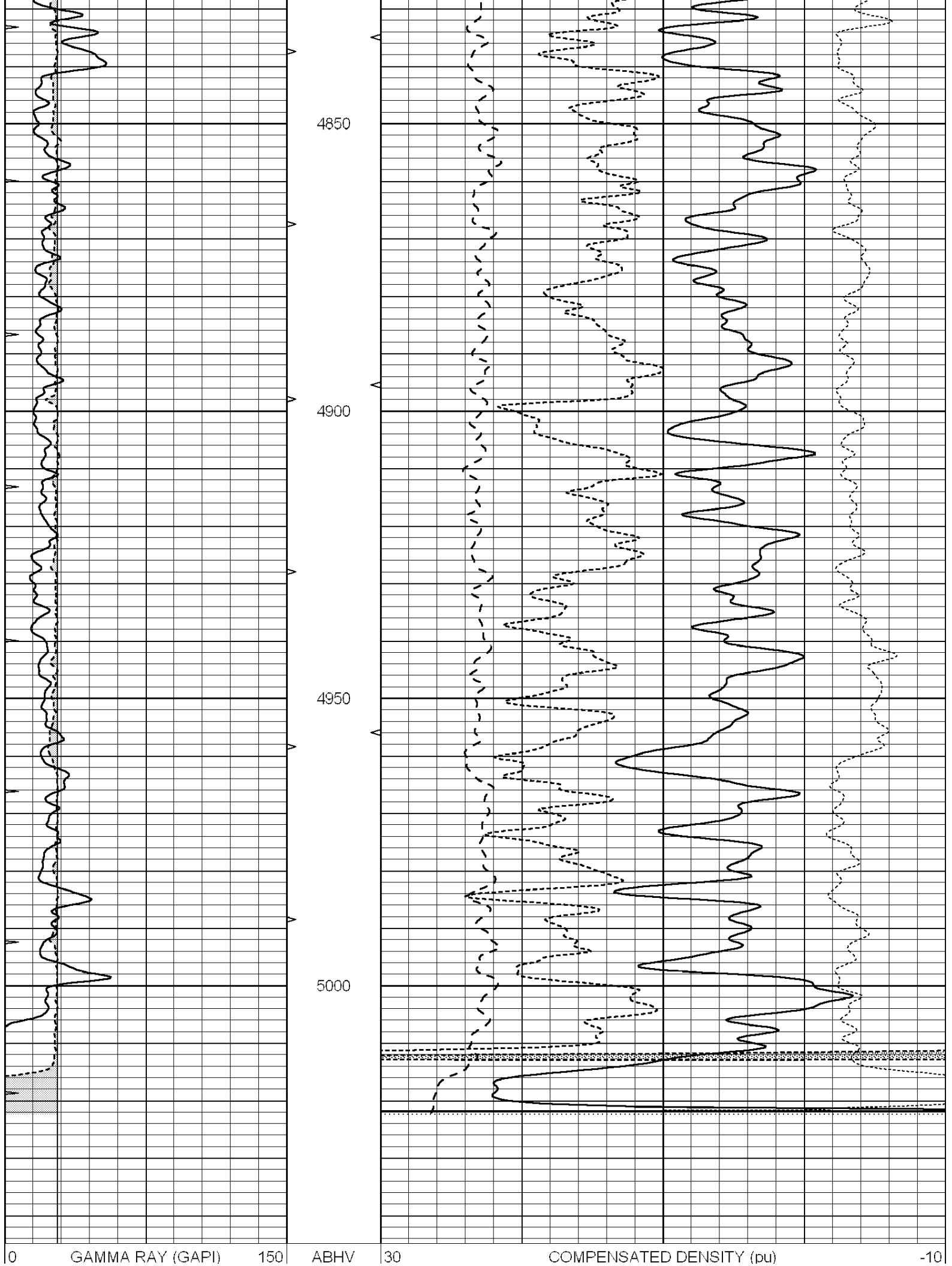
Database File: 2671pe.db
 Dataset Pathname: pass2.6
 Presentation Format: ldt_neu
 Dataset Creation: Wed Aug 08 03:48:22 2018 by Calc SOC 120430
 Charted by: Depth in Feet scaled 1:240

0	GAMMA RAY (GAPI)	150	ABHV	30	COMPENSATED DENSITY (pu)	-10			
6	CALIPER (in)	16	10 (ft3)	0	30	COMPENSATED NEUTRON (pu)	-10		
0	MINMK	20	TBHV	0	PE	10	-0.25	CORRECTION (g/cc)	0.25
			0 (ft3)	10					









6	CALIPER (in)	16	10 (ft3)	0	30	COMPENSATED NEUTRON (pu)			-10
0	MINMK	20	TBHV	0	PE	10	-0.25	CORRECTION (g/cc)	0.25
			0 (ft3)	10					

Calibration Report

Database File: 1598ddn.db
Dataset Pathname: pass4
Dataset Creation: Wed Aug 30 02:13:00 2017 by Log SOC 120430

Dual Induction Calibration Report

Serial-Model: PROBE7-DILG
Surface Cal Performed: Wed Aug 30 00:06:33 2017
Downhole Cal Performed: Mon Jul 28 12:02:56 2008
After Survey Verification Performed: Mon Jul 28 12:02:56 2008

Surface Calibration

		Readings			References			Results	
Loop:	Air	Loop		Air	Loop		m	b	
Deep	-0.014	0.629	V	0.000	400.000	mmho/m	620.000	0.000	
Medium	0.039	0.728	V	0.000	464.000	mmho/m	675.000	-44.000	
Internal:	Zero	Cal		Zero	Cal		m	b	
Deep	0.011	0.610	V	0.000	400.000	mmho/m	667.135	-7.256	
Medium	0.005	0.712	V	0.000	464.000	mmho/m	655.677	-3.102	

Downhole Calibration

		Readings			References			Results	
	Zero	Cal		Zero	Cal		m'	b'	
Deep	0.000	0.000	mmho/m	14.508	388.384	mmho/m	1.000	0.000	
Medium	0.000	0.000	mmho/m	166.367	504.400	mmho/m	1.000	0.000	
LL3		7.500	V		1400.000	Ohm-m			
		0.000	V		20.000	Ohm-m			
		-7.200	V		4000.000	mmho-m			

After Survey Verification

		Readings			Targets			Results	
	Zero	Cal		Zero	Cal		m'	b'	
Deep	0.000	0.000	mmho/m	0.000	0.000	mmho/m	0.000	0.000	
Medium	0.000	0.000	mmho/m	0.000	0.000	mmho/m	0.000	0.000	
LL3		1.000	Ohm-m		1.000	Ohm-m			
		0.000	Ohm-m		0.000	Ohm-m			
		1.000	mmho-m		1.000	mmho-m			

Litho Density Calibration Report

Serial: 002 Model: PRB

Master Calibration

Performed Mon Aug 21 11:27:42 2017

	Background	Magnesium	Aluminum	Sandstone	
Window 1	837.1	10632.5	2945.1	12110.1	cps
Window 2	772.0	9117.4	2570.1	10197.3	cps
Window 3	631.7	4669.0	1481.9	5042.9	cps
Window 4	187.0	187.5	185.9	189.9	cps
Long Space	0.0	8345.4	1798.1	9425.3	cps
Short Space	1.1	1927.9	1285.9	2050.2	cps
Rho		1.7100	2.5960	1.3800	g/cc
Pe		0.0000	2.5700	1.5500	

Rib Angle : 45.2
Spine Angle : 75.2

Rib Slope : 1.008
Spine Slope : 3.790

Density/Spine Ratio : 0.558
Spine Intercept : -19.6

Before Survey Verification

Performed Wed Dec 31 18:00:00 1969

Window 1	0.0	0.0	0.0	0.0	cps
Window 2	0.0	0.0	0.0	0.0	cps
Window 3	0.0	0.0	0.0	0.0	cps
Window 4	0.0	0.0	0.0	0.0	cps
Long Space	0.0	0.0	0.0	0.0	cps
Short Space	0.0	0.0	0.0	0.0	cps
Measured Rho		0.0000	0.0000	0.0000	g/cc
Measured Correction		0.0000	0.0000	0.0000	g/cc
Measured Pe			0.0000	0.0000	

After Survey Verification

Performed Wed Dec 31 18:00:00 1969

Window 1	0.0	0.0	0.0	0.0	cps
Window 2	0.0	0.0	0.0	0.0	cps
Window 3	0.0	0.0	0.0	0.0	cps
Window 4	0.0	0.0	0.0	0.0	cps
Long Space	0.0	0.0	0.0	0.0	cps
Short Space	0.0	0.0	0.0	0.0	cps
Measured Rho		0.0000	0.0000	0.0000	g/cc
Measured Correction		0.0000	0.0000	0.0000	g/cc
Measured Pe			0.0000	0.0000	

Compensated Neutron Calibration Report

Serial Number: 070808
Tool Model: Probe

PRE-SURVEY VERIFICATION

Detector	Readings	Measured	Target
Short Space	cps		
Long Space	cps	pu	pu

POST-SURVEY VERIFICATION

Detector	Readings	Measured	Target
Short Space	cps		
Long Space	cps	pu	pu

Gamma Ray Calibration Report

Serial Number: 070558
Tool Model: OPEN_GR
Performed: Wed May 31 00:09:32 2017

Calibrator Value: 1.0 GAPI
Background Reading: 0.0 cps
Calibrator Reading: 1.0 cps
Sensitivity: 0.2800 GAPI/cps