



MICRO LOG

Company RAYMOND OIL COMPANY, INC.
Well KNEBEL-SHOPE #19-1
Field WILDCAT
County BUTLER State KANSAS

Location: API #: 15-015-24105-0000
1980' FNL & 1350' FWL
SEC 19 TWP 24S RGE 8E
Permanent Datum GROUND LEVEL Elevation 1514
Log Measured From KELLY BUSHING 6' A.G.L
Drilling Measured From KELLY BUSHING
Other Services CDL/CNL DIL
Elevation K.B. 1520 D.F. 1518 G.L. 1514

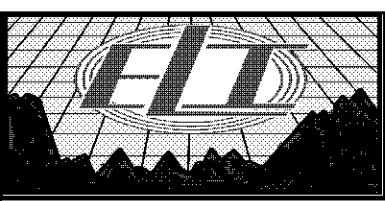
Table with columns: Date, Run Number, Depth Driller, Depth Logger, Bottom Logged Interval, Top Log Interval, Casing Driller, Casing Logger, Bit Size, Type Fluid in Hole, Density / Viscosity, PH / Fluid Loss, Source of Sample, Rim @ Meas. Temp, Rmt @ Meas. Temp, Rmc @ Meas. Temp, Source of Rmf / Rmc, Rim @ BHT, Time Circulation Stopped, Time Logger on Bottom, Maximum Recorded Temperature, Equipment Number, Location, Recorded By, Witnessed By.

<<< Fold Here >>>

All interpretations are opinions based on inferences from electrical or other measurements and we cannot and do not guarantee the accuracy or correctness of any interpretation, and we shall not, except in the case of gross or willful negligence on our part, be liable or responsible for any loss, costs, damages, or expenses incurred or sustained by anyone resulting from any interpretation made by any of our officers, agents or employees. These interpretations are also subject to our general terms and conditions set out in our current Price Schedule.

Comments

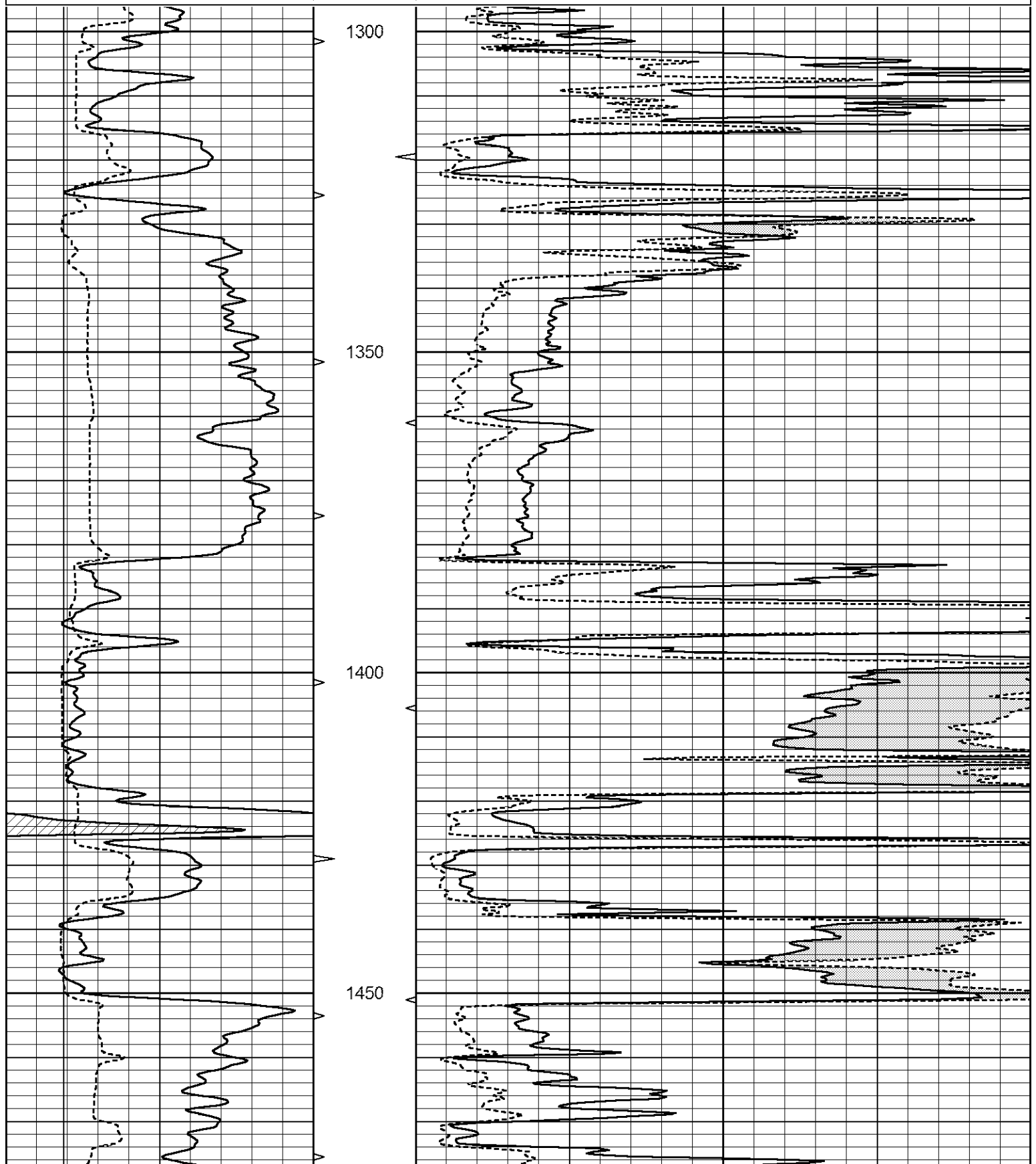
THANK YOU FOR USING ELI WIRELINE SERVICES, HAYS, KS. (785) 628-6395
DIRECTIONS
CASSODAY, KS. - 5 SOUTH TO JOG EAST 1 MILE - 2 SOUTH - EAST INTO

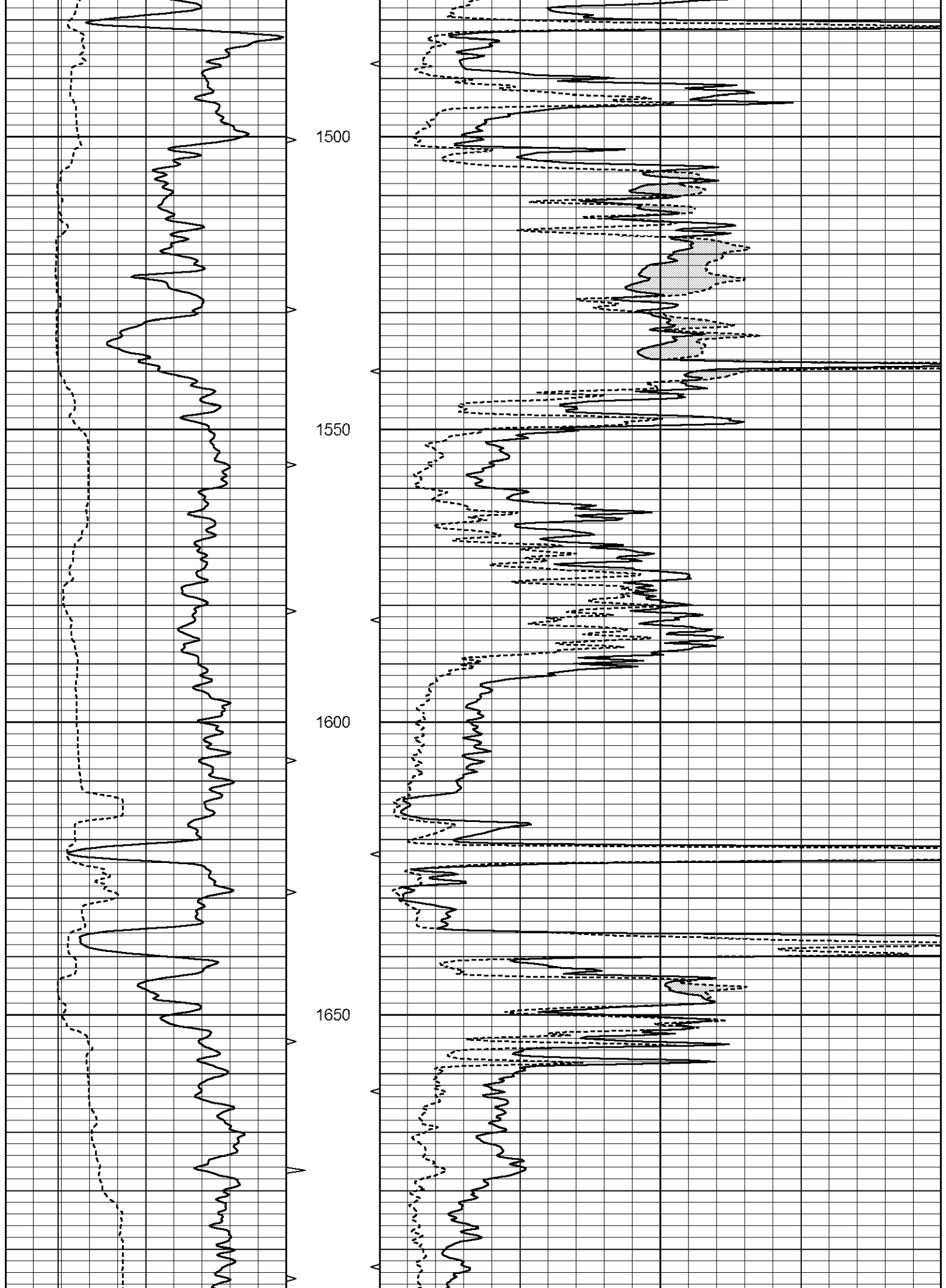


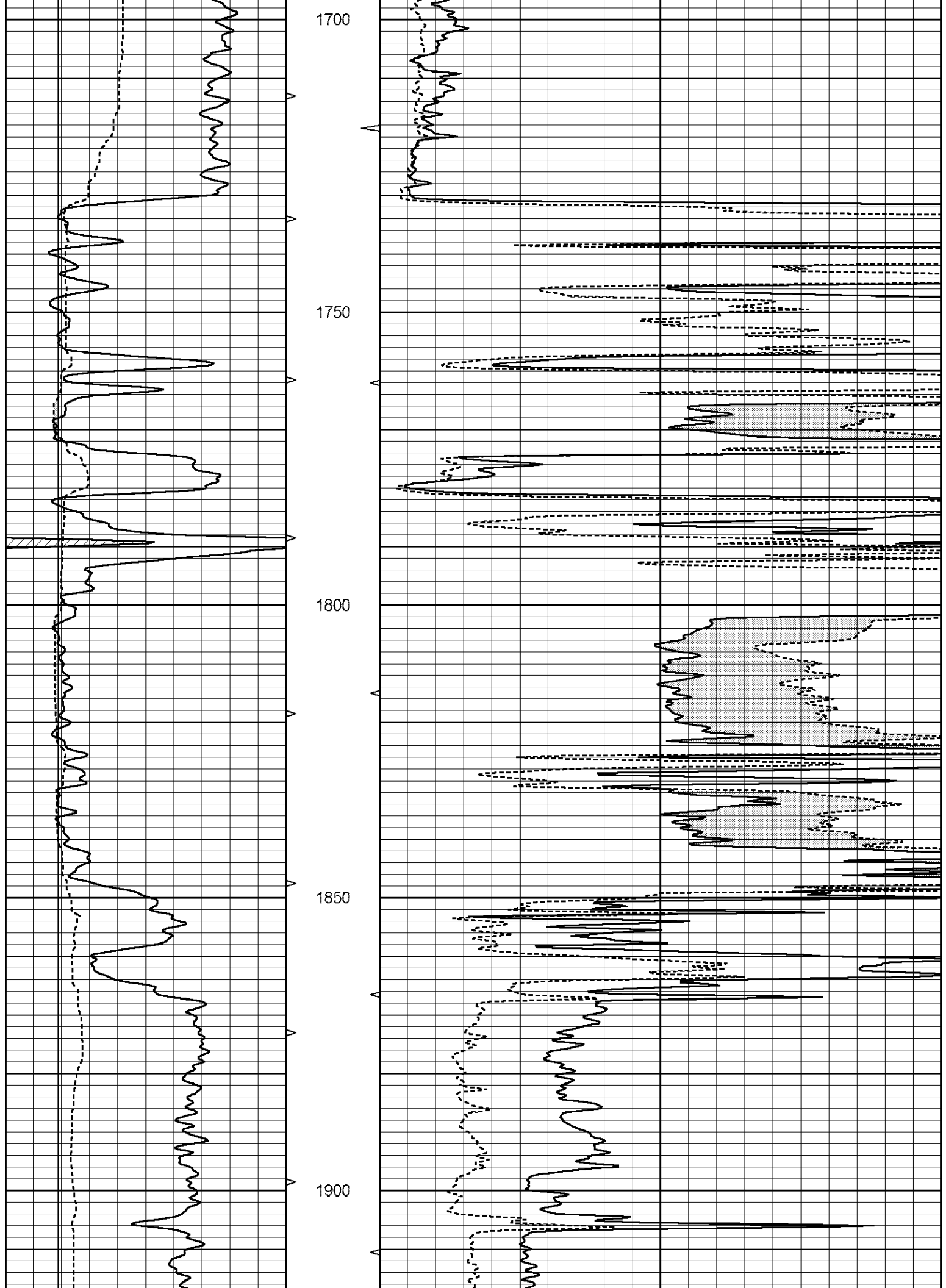
MAIN SECTION

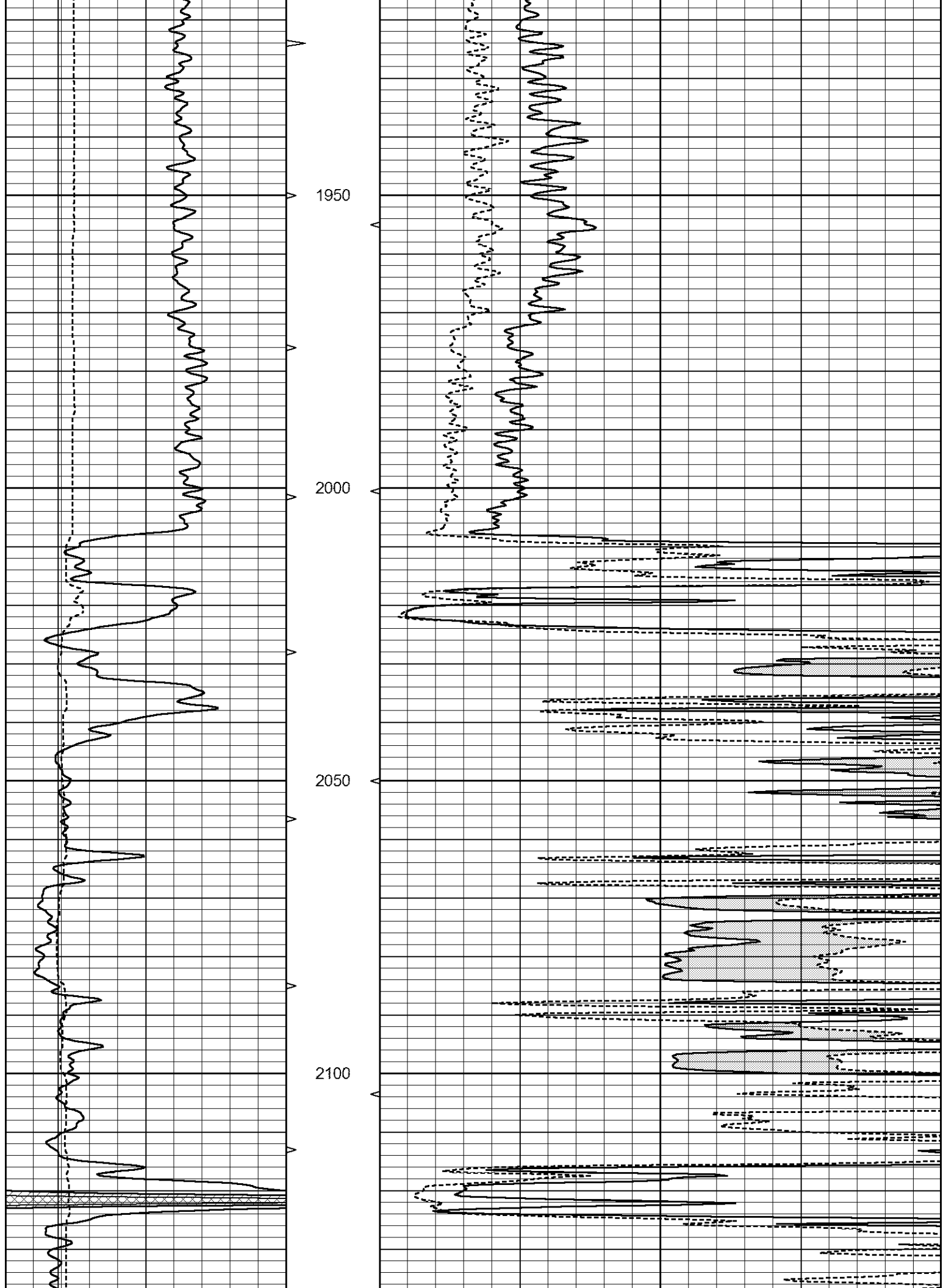
Database File 3001ddn8.db
 Dataset Pathname pass6.1
 Presentation Format _micro
 Dataset Creation Tue Aug 28 15:58:31 2018
 Charted by Depth in Feet scaled 1:240

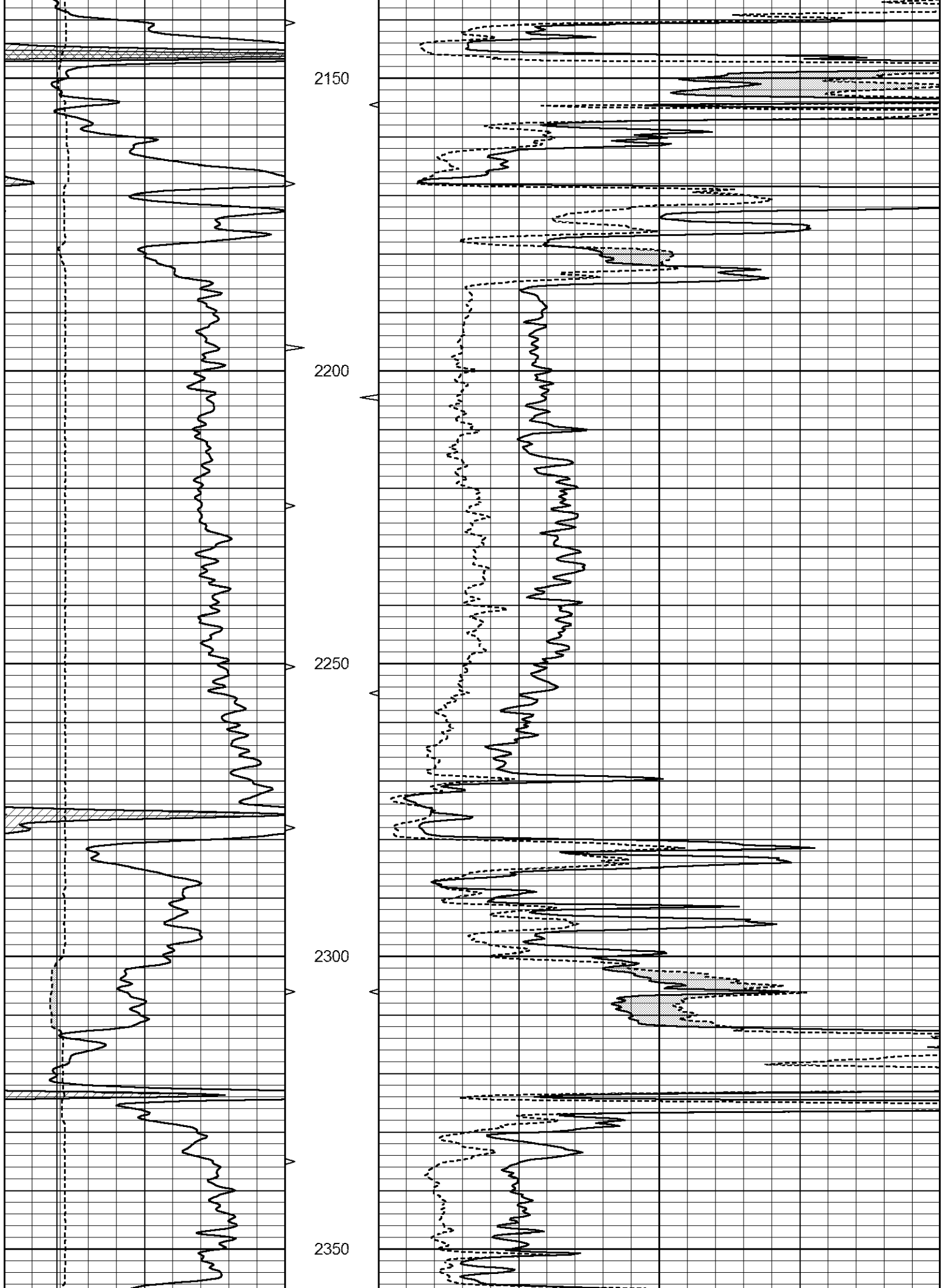
0	GAMMA RAY (GAPI)	150	ABHV	0	MEL1.5 (Ohm-m)	40
6	CALIPER (in)	16	10 (ft3)	0 0	MEL2.0 (Ohm-m)	40
			TBHV			
			0 (ft3)	10		

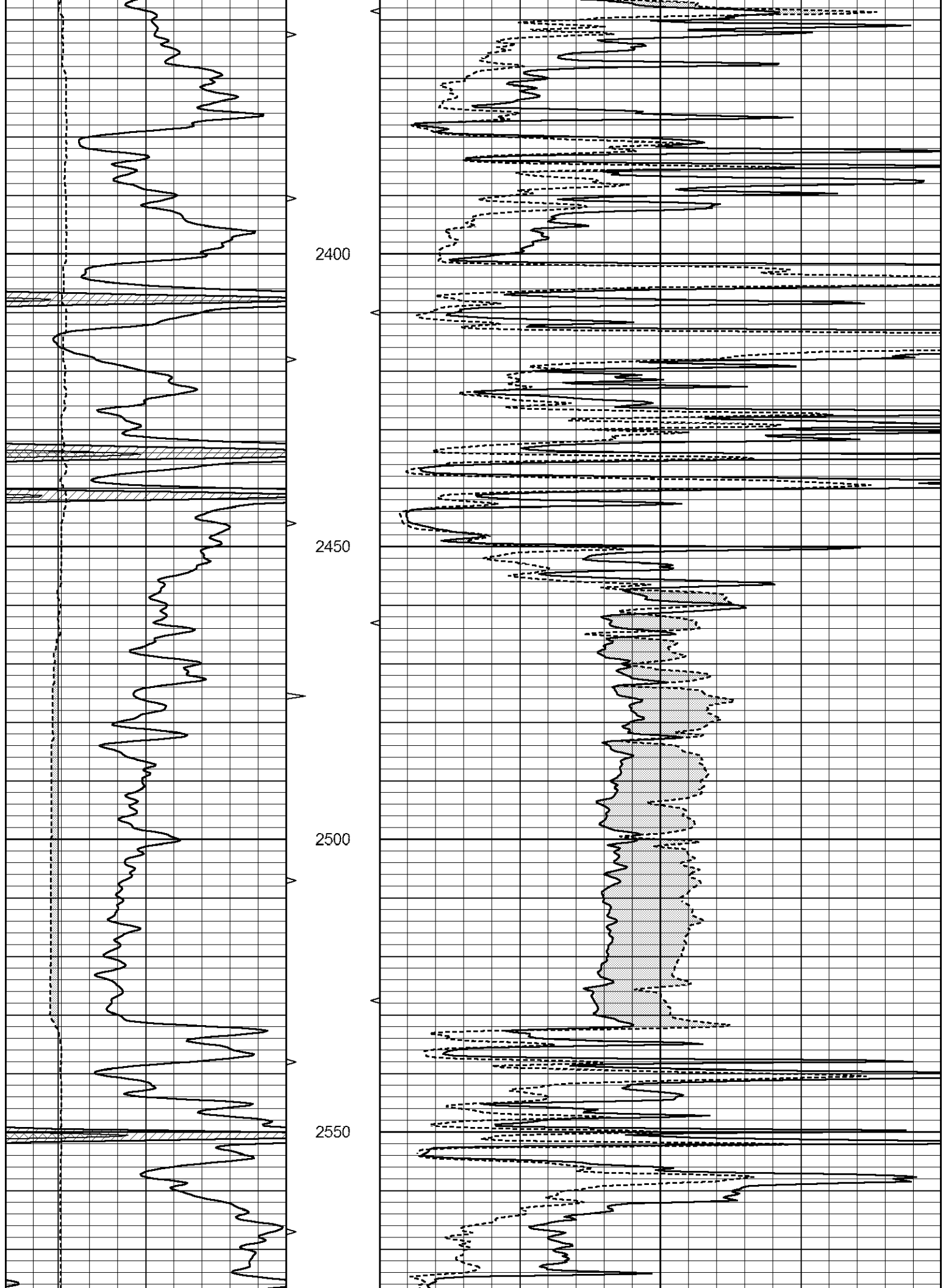


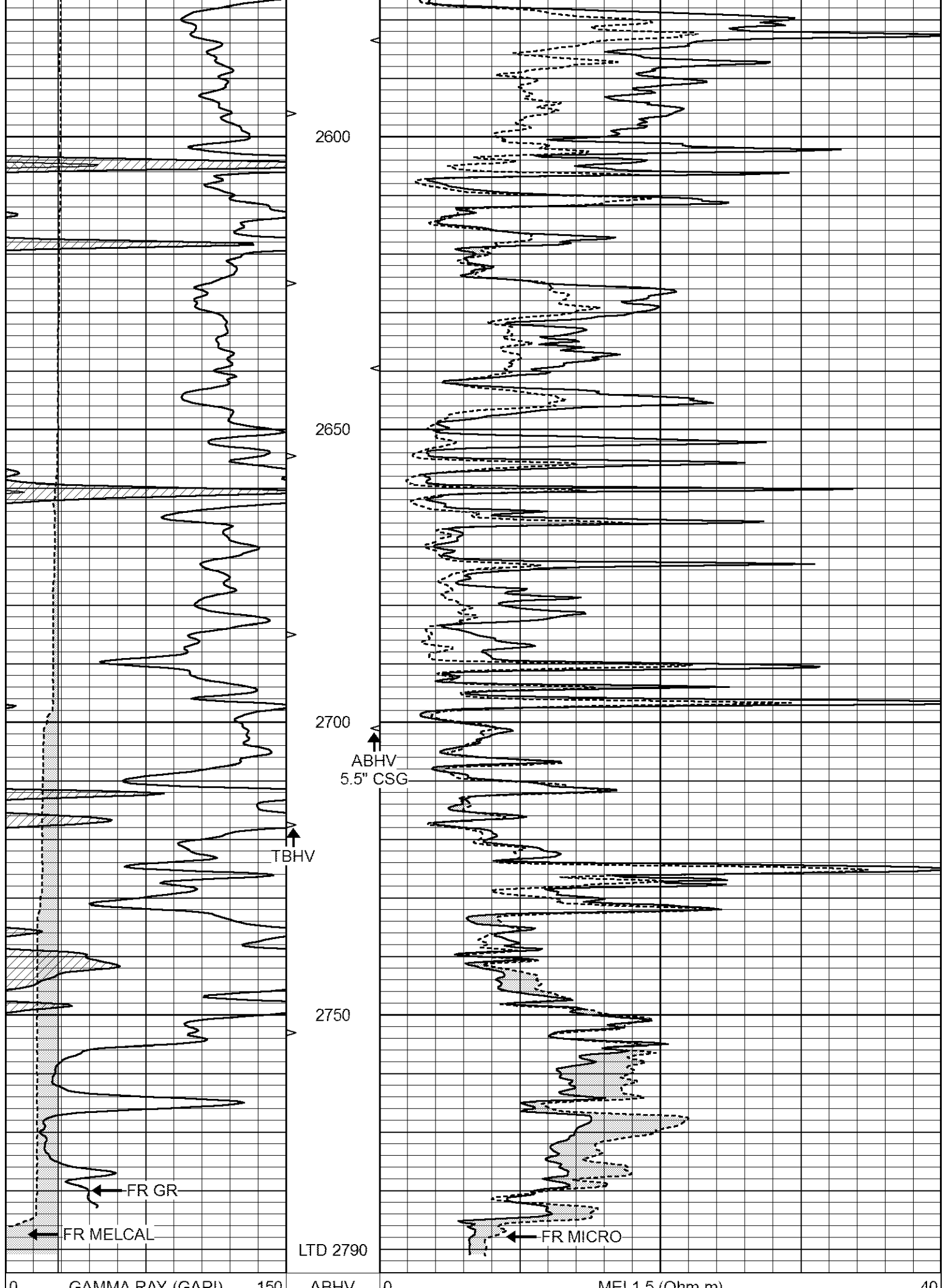




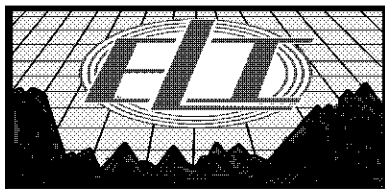








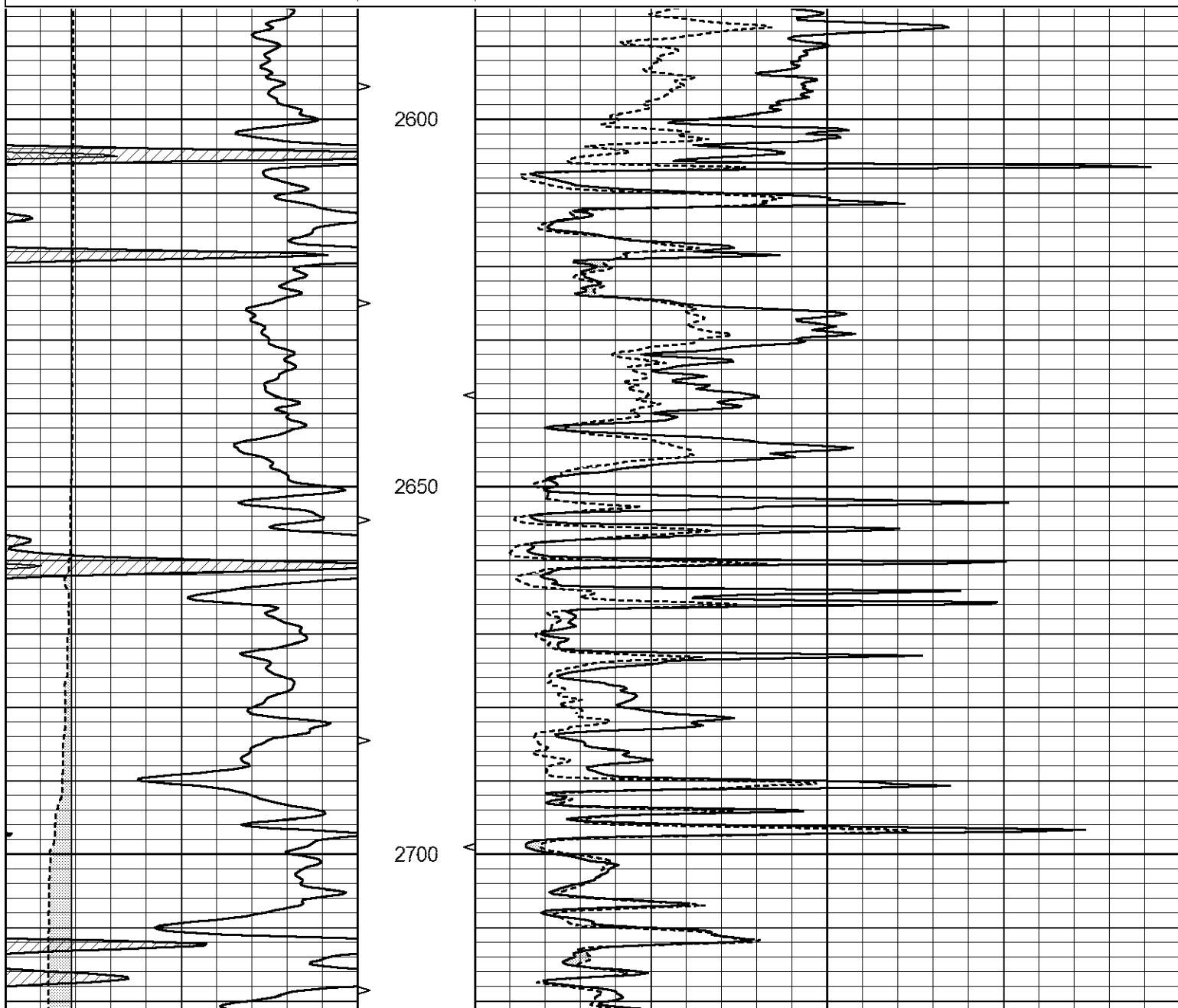
0	GAMMA RAY (GAPI)	150	ABHV	0	MEL1.5 (Ohm-m)	40
6	CALIPER (in)	16	10 (ft3)	0 0	MEL2.0 (Ohm-m)	40
			TBHV			
			0 (ft3)	10		

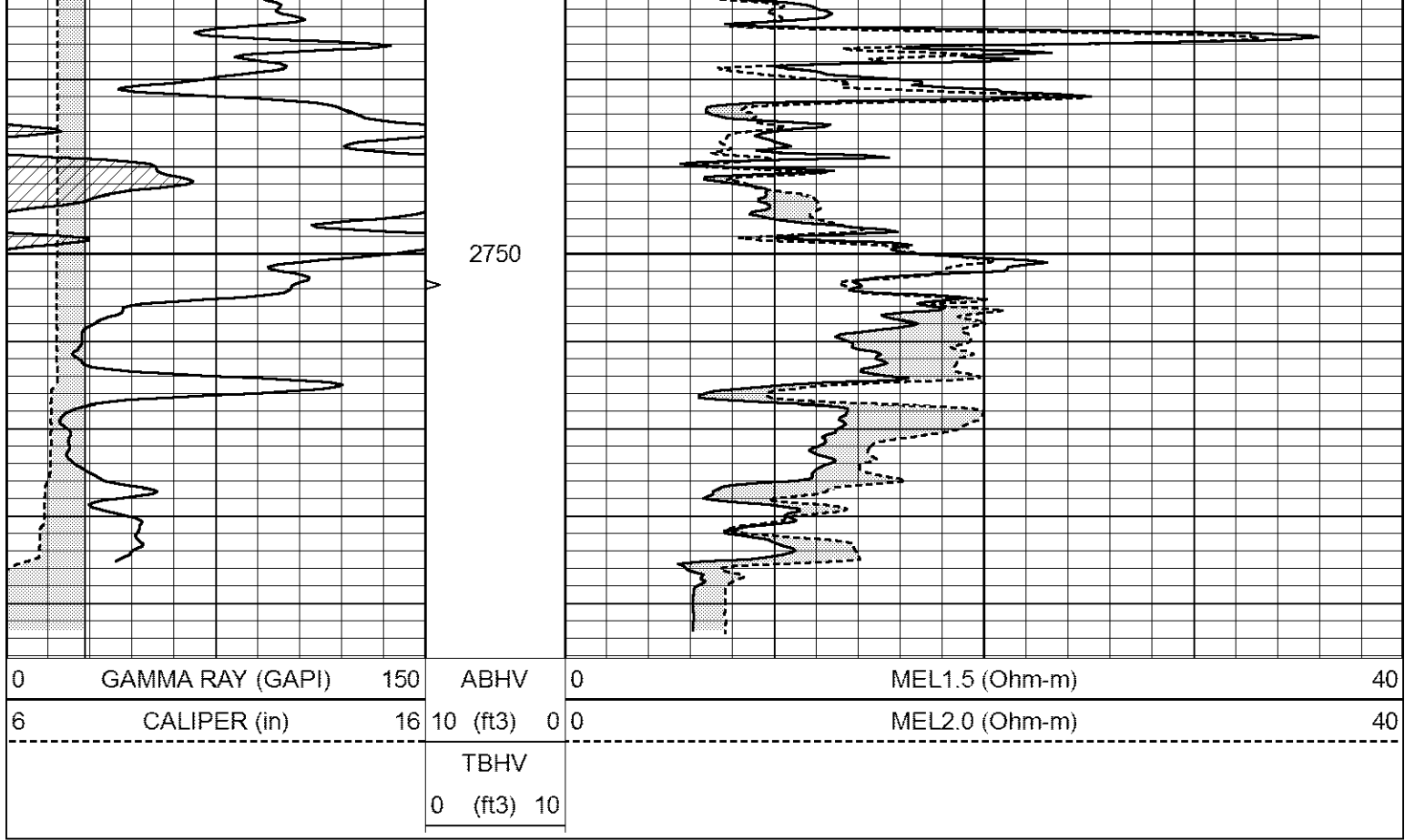


REPEAT SECTION

Database File 3001ddn8.db
 Dataset Pathname pass5.1
 Presentation Format _micro
 Dataset Creation Tue Aug 28 15:46:22 2018
 Charted by Depth in Feet scaled 1:240

0	GAMMA RAY (GAPI)	150	ABHV	0	MEL1.5 (Ohm-m)	40
6	CALIPER (in)	16	10 (ft3)	0 0	MEL2.0 (Ohm-m)	40
			TBHV			
			0 (ft3)	10		





Calibration Report

Database File 3001ddn8.db
 Dataset Pathname pass5.1
 Dataset Creation Tue Aug 28 15:46:22 2018

MICRO_USR Calibration Report

Serial Number:	070910	
Tool Model:	ProbeL	
Performed:	Fri Aug 03 23:13:00 2018	
Caliper Calibration:	Gain=7.336	Offset=3.017
References	Low Cal 8.000	High Cal 14.000
Readings	0.652	1.470
1.5" Calibration:	Gain=55.000	Offset=-3.067
References	Low Cal 0.000	High Cal 20.000
Readings	0.004	1.335
2" Calibration:	Gain=75.000	Offset=-3.779
References	Low Cal 0.000	High Cal 20.000
Readings	0.004	1.029

Microlog Calibration Report

Serial-Model: 070910-ProbeL
 Performed: (Not Performed)

Readings

References

Results

	Zero	Cal		Zero	Cal		m	b
Normal	0.0000	1.0000	V	0.0000	1.0000	Ohm-m	1.0000	0.0000
Inverse	0.0000	1.0000	V	0.0000	1.0000	Ohm-m	1.0000	0.0000
Caliper	0.0000	1.0000	V	0.0000	1.0000	in	1.0000	0.0000

Gamma Ray Calibration Report

Serial Number:	7	
Tool Model:	Probe1	
Performed:	Wed Jun 29 11:10:58 2016	
Calibrator Value:	1.0	GAPI
Background Reading:	0.0	cps
Calibrator Reading:	1.0	cps
Sensitivity:	0.2700	GAPI/cps