



**MICRO
LOG**

Company H&C OIL OPERATING, INC.
 Well BAKEL UNIT #25 SIW
 Field DREIL
 County GRAHAM
 State KANSAS

Company H&C OIL OPERATING, INC.
 Well BAKEL UNIT #25 SIW
 Field DREIL
 County GRAHAM State KANSAS

Location: API # : 15-065-24150-00-00
 1650 FNL & 380 FEL
 SEC 25 TWP 9S RGE 25W
 Permanent Datum GROUND LEVEL Elevation 2575'
 Log Measured From KELLY BUSHING 8' A.G.L.
 Drilling Measured From KELLY BUSHING
 Other Services CDL/CNL/DIL
 Elevation K.B. 2583
 D.F. 2581
 G.L. 2575

Date	07/17/18
Run Number	TWO
Depth Driller	4185
Depth Logger	4188
Bottom Logged Interval	4187
Top Log Interval	3550
Casing Driller	8 5/8@ 259
Casing Logger	259
Bit Size	7 7/8"
Type Fluid in Hole	CHEMICAL MUD
Density / Viscosity	9.061
pH / Fluid Loss	10.5/6.4
Source of Sample	FLOWLINE
Rm @ Meas. Temp	1.3@86
Rmt @ Meas. Temp	.98@86
Rmc @ Meas. Temp	1.56@86
Source of Rmf / Rmc	MEASURED
Rm @ BHT	.92@117
Time Circulation Stopped	2 HOURS
Time Logger on Bottom	///
Maximum Recorded Temperature	117F
Equipment Number	4010
Location	HAYS, KANSAS
Recorded By	GUS PFANENSTIEL
Witnessed By	MARC DOWNING

<<< Fold Here >>>

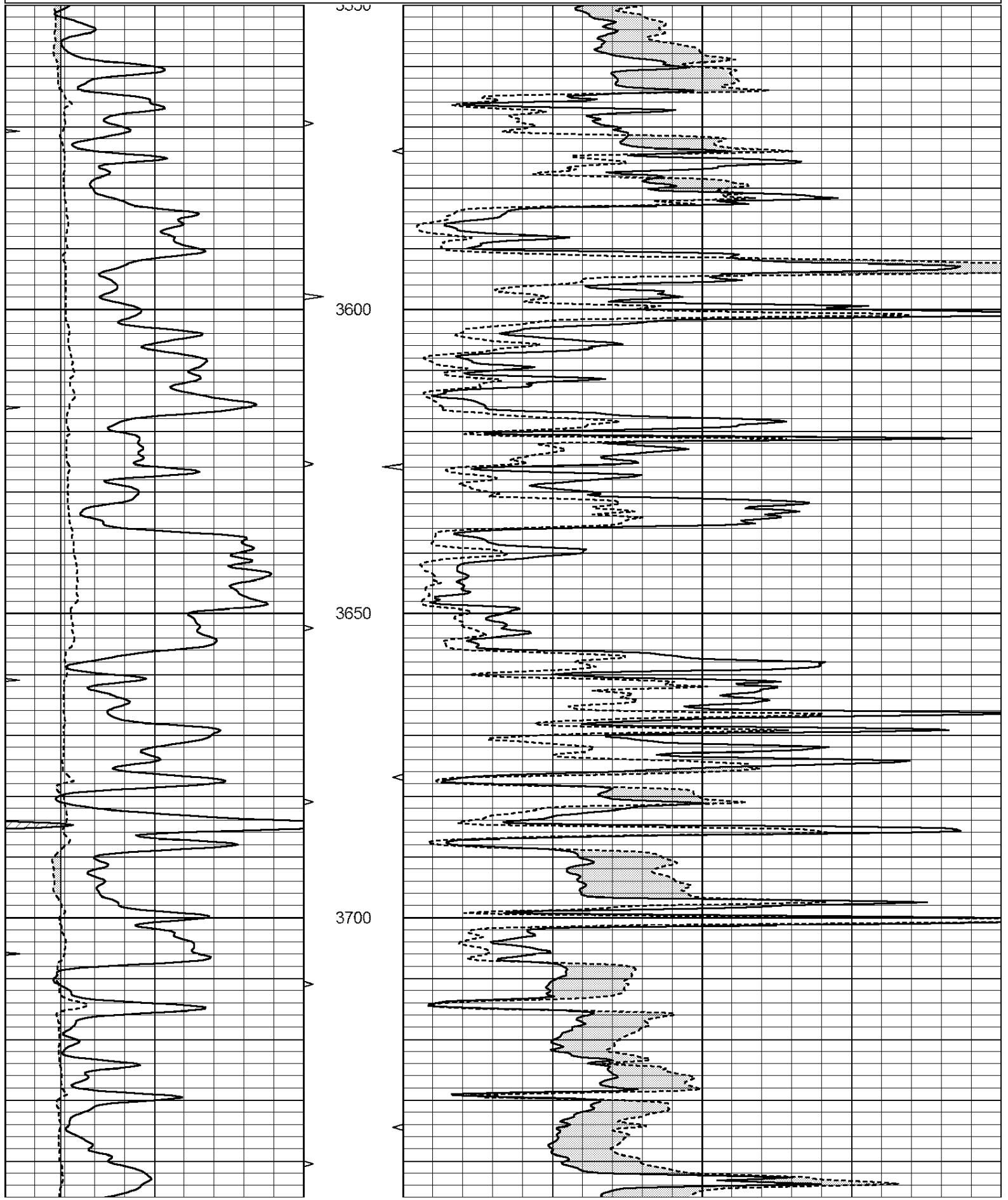
All interpretations are opinions based on inferences from electrical or other measurements and we cannot and do not guarantee the accuracy or correctness of any interpretation, and we shall not, except in the case of gross or willful negligence on our part, be liable or responsible for any loss, costs, damages, or expenses incurred or sustained by anyone resulting from any interpretation made by any of our officers, agents or employees. These interpretations are also subject to our general terms and conditions set out in our current Price Schedule.

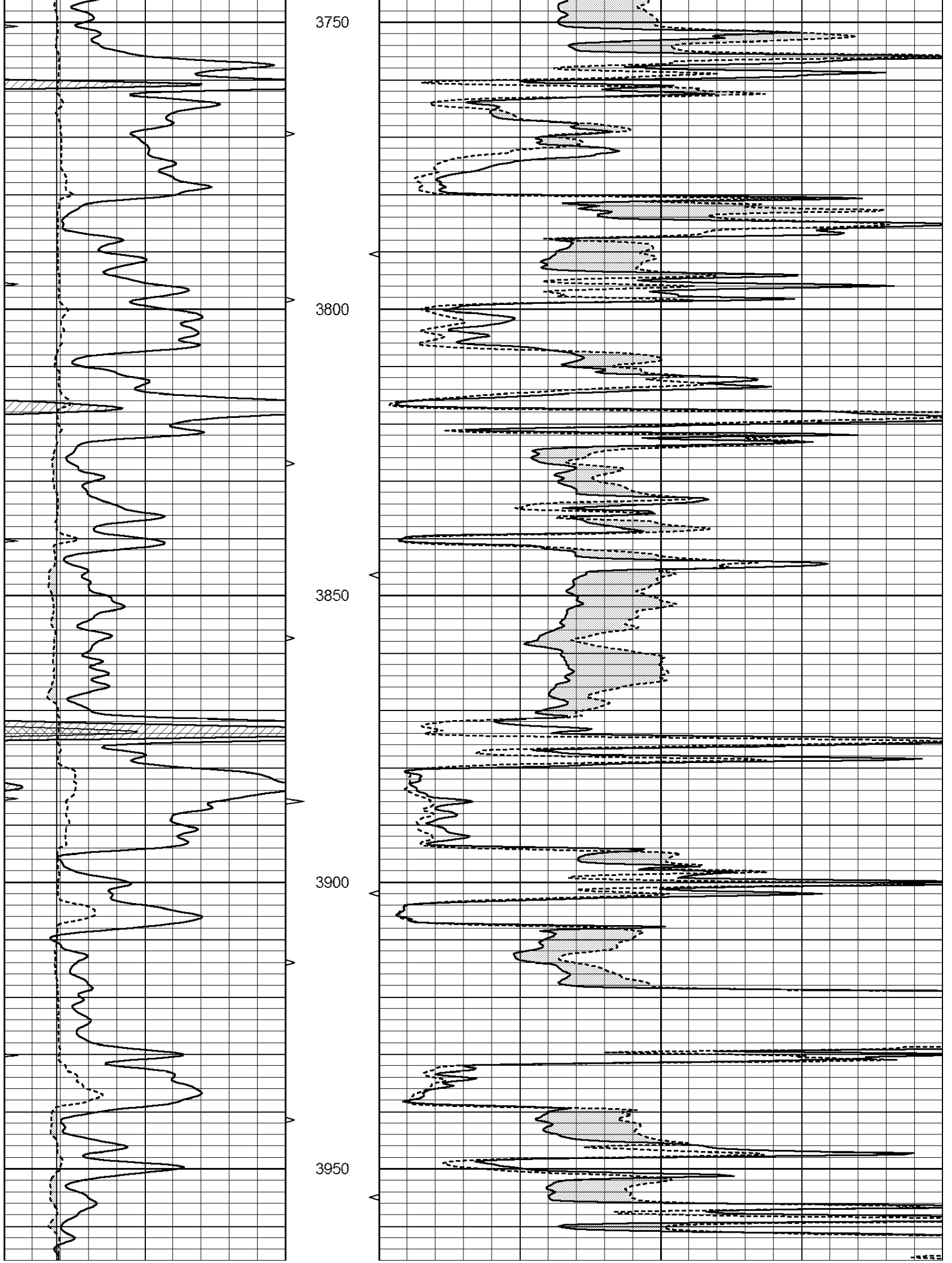
Comments

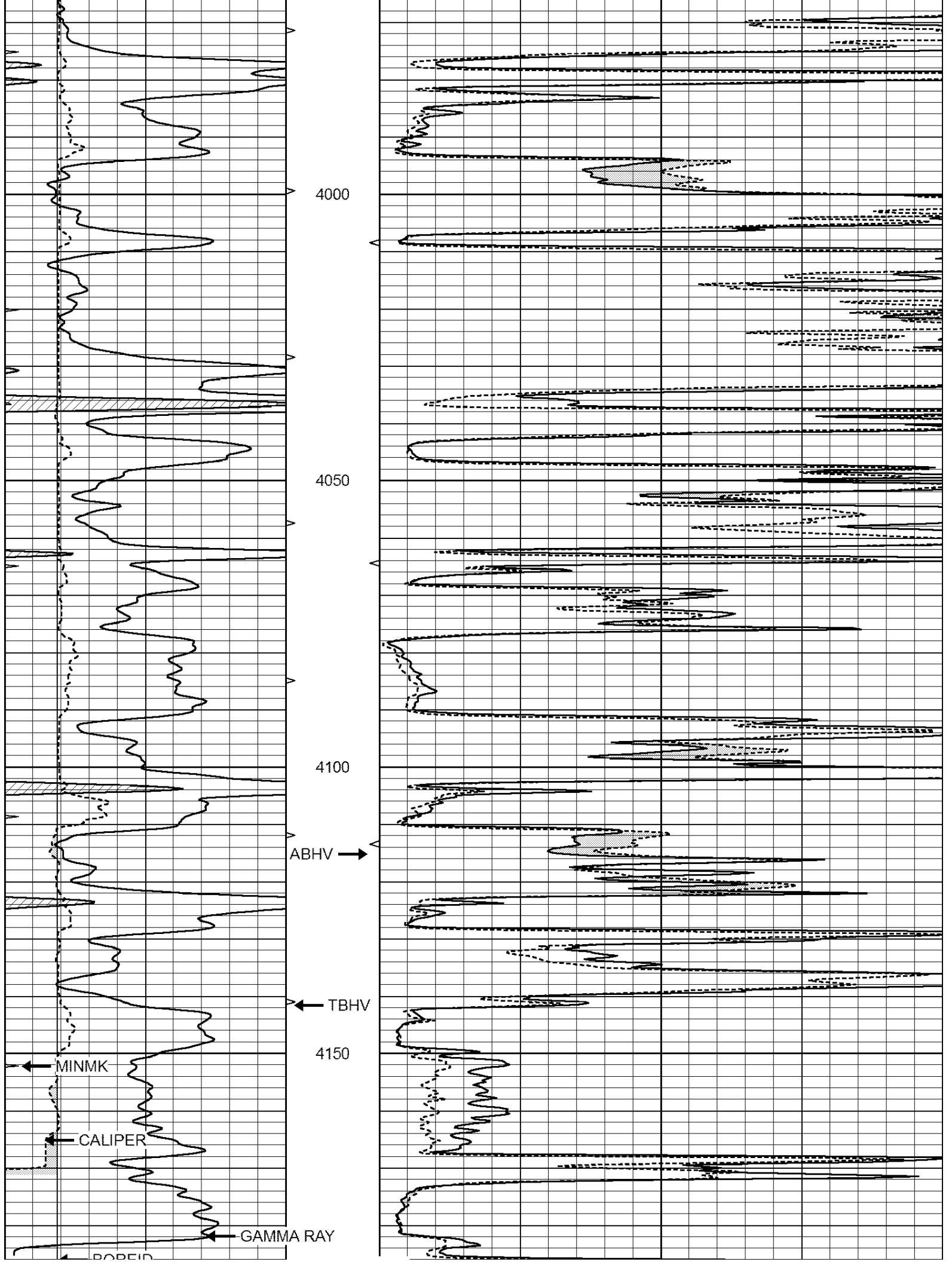
THANK YOU FOR USING ELI WIRELINE, HAYS, KS. (785) 628-6395

DIRECTIONS
 NORTH OF WAKEENEY TO REDLINE RD.
 WEST TO 160 RD., NORTH 1/2 MILE
 WEST INTO. AT TANKS

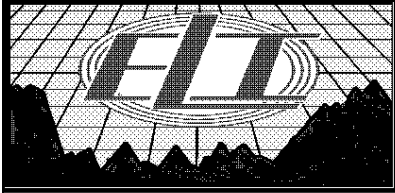
0	GAMMA RAY (GAPI)	150	ABHV	0	MEL1.5 (Ohm-m)	40
6	CALIPER (in)	16	10 (ft3)	0	MEL2.0 (Ohm-m)	40
0	MINMK	20	TBHV			
			0 (ft3)	10		







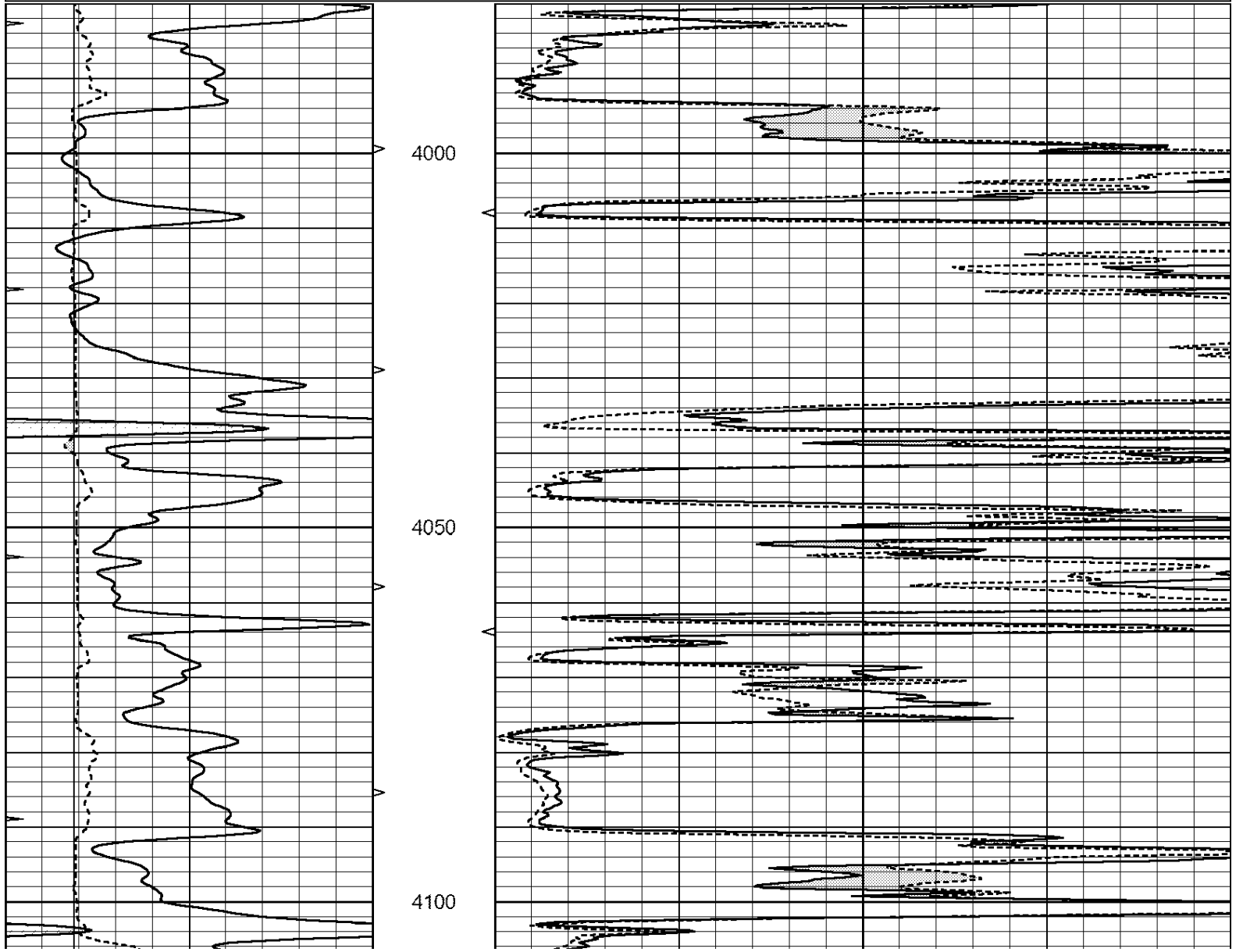
Borehole		LTD 4188	MEL1.5		MEL2.0	
0	GAMMA RAY (GAPI)	150	ABHV	0	MEL1.5 (Ohm-m)	40
6	CALIPER (in)	16	10 (ft3)	0	MEL2.0 (Ohm-m)	40
0	MINMK	20	TBHV			
			0 (ft3)	10		

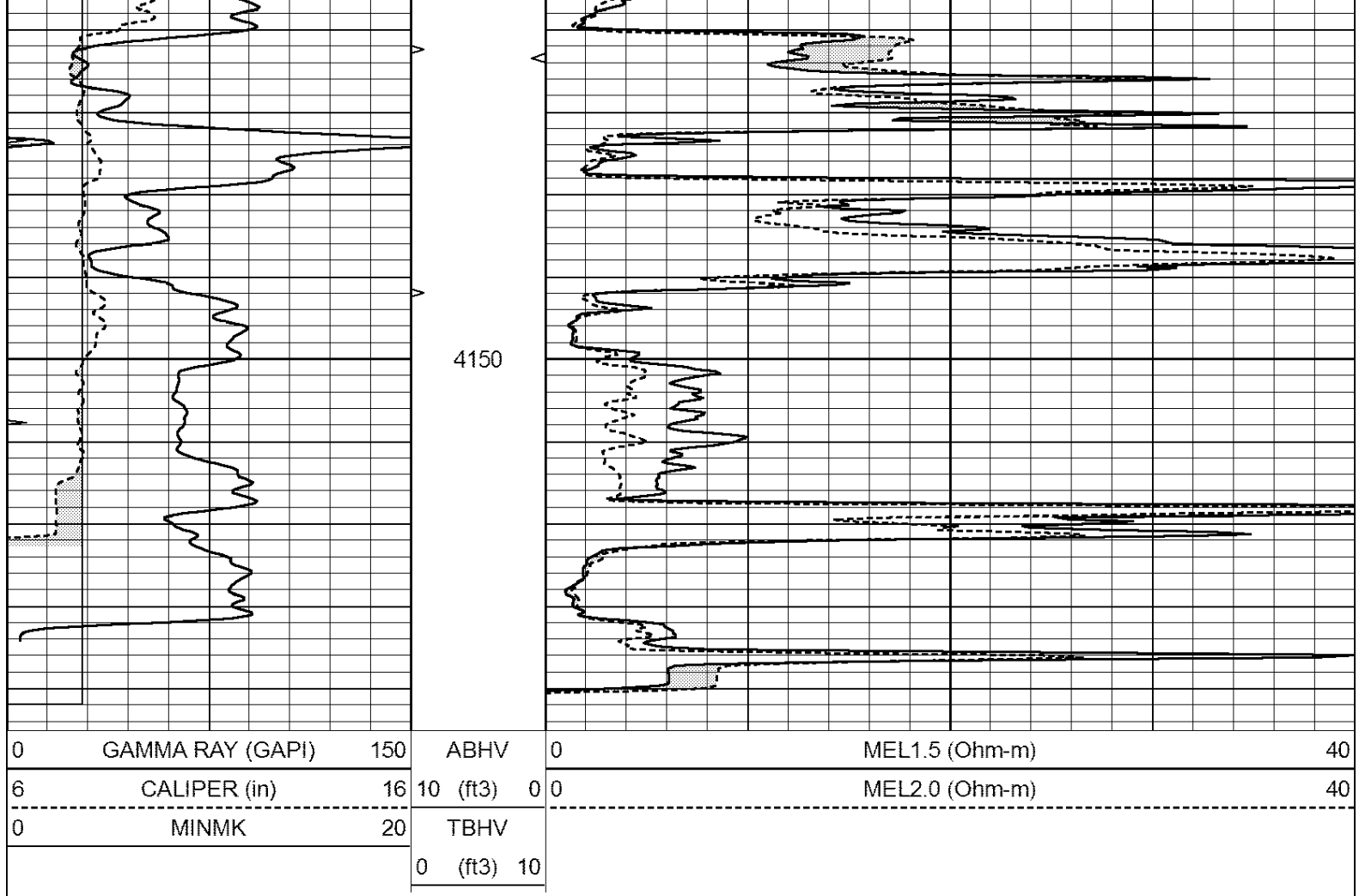


REPEAT SECTION

Database File: 2692ddn.db
 Dataset Pathname: pass4.1
 Presentation Format: _micro
 Dataset Creation: Tue Jul 17 21:38:07 2018
 Charted by: Depth in Feet scaled 1:240

0	GAMMA RAY (GAPI)	150	ABHV	0	MEL1.5 (Ohm-m)	40
6	CALIPER (in)	16	10 (ft3)	0	MEL2.0 (Ohm-m)	40
0	MINMK	20	TBHV			
			0 (ft3)	10		





Calibration Report			
Database File:	2692ddn.db		
Dataset Pathname:	pass4.1		
Dataset Creation:	Tue Jul 17 21:38:07 2018		
MICRO Calibration Report			
Serial Number:	MICRO4		
Tool Model:	PROBE		
Performed:	Thu Jul 05 09:30:00 2018		
Caliper Calibration:	Gain=3.729	Offset=-17.125	
References	Low Cal	High Cal	
Readings	7.000	14.000	
	6.470	8.348	
1.5" Calibration:	Gain=34.297	Offset=-2.375	
References	Low Cal	High Cal	
Readings	0.000	20.000	
	0.013	1.517	
2" Calibration:	Gain=46.168	Offset=-2.464	
References	Low Cal	High Cal	
Readings	0.000	20.000	
	0.015	1.180	
Gamma Ray Calibration Report			
Serial Number:	GR5		
Tool Model:	OPEN		

Performed: Mon Jul 02 20:05:37 2018

Calibrator Value: 1.0 GAPI

Background Reading: 0.0 cps

Calibrator Reading: 1.0 cps

Sensitivity: 0.9200 GAPI/cps