



DUAL INDUCTION LOG

Company FOURWINDS OIL CORP.
 Well GW UNIT #1
 Field UNNAMED
 County NORTON
 State KANSAS

Company FOURWINDS OIL CORP.
 Well GW UNIT #1
 Field UNNAMED
 County NORTON State KANSAS

Location: API #: 15-137-20757-0000
 660' FNL & 2440' FWL
 SEC 28 TWP 5S RGE 21W
 Permanent Datum GROUND LEVEL Elevation 2236
 Log Measured From KELLY BUSHING 8' A.G.L.
 Drilling Measured From KELLY BUSHING
 Other Services CDL/CNL ML
 Elevation K.B. 2244
 D.F. 2242
 G.L. 2236

Date	10/01/20
Run Number	ONE
Depth Driller	3740
Depth Logger	3737
Bottom Logged Interval	3735
Top Log Interval	00
Casing Driller	8 5/8" @ 222
Casing Logger	222
Bit Size	7 7/8"
Type Fluid in Hole	CHEMICAL MUD
Density / Viscosity	9.2/58
pH / Fluid Loss	10.0/8.8
Source of Sample	FLOWLINE
Rm @ Meas. Temp	2.0@ 72F
Rmf @ Meas. Temp	1.5@ 72F
Rmc @ Meas. Temp	2.4 @ 72F
Source of Rmf / Rmc	MEASURED
Rm @ BHT	1.26@ 114F
Time Circulation Stopped	2 HOURS
Time Logger on Bottom	////
Maximum Recorded Temperature	114F
Equipment Number	1523
Location	HAYS, KANSAS
Recorded By	GUS PFANENSTIEL
Witnessed By	JEFF LAWLER

<<< Fold Here >>>

All interpretations are opinions based on inferences from electrical or other measurements and we cannot and do not guarantee the accuracy or correctness of any interpretation, and we shall not, except in the case of gross or willful negligence on our part, be liable or responsible for any loss, costs, damages, or expenses incurred or sustained by anyone resulting from any interpretation made by any of our officers, agents or employees. These interpretations are also subject to our general terms and conditions set out in our current Price Schedule.

Comments

THANK YOU FOR USING ELI WIRELINE, HAYS, KS. (785) 628-6395

DIRECTIONS: 4 WEST OF LOGAN TO RD E 12, SOUTH TO RD Z.
 WEST TO RD E 11, 3 SOUTH, WEST INTO.

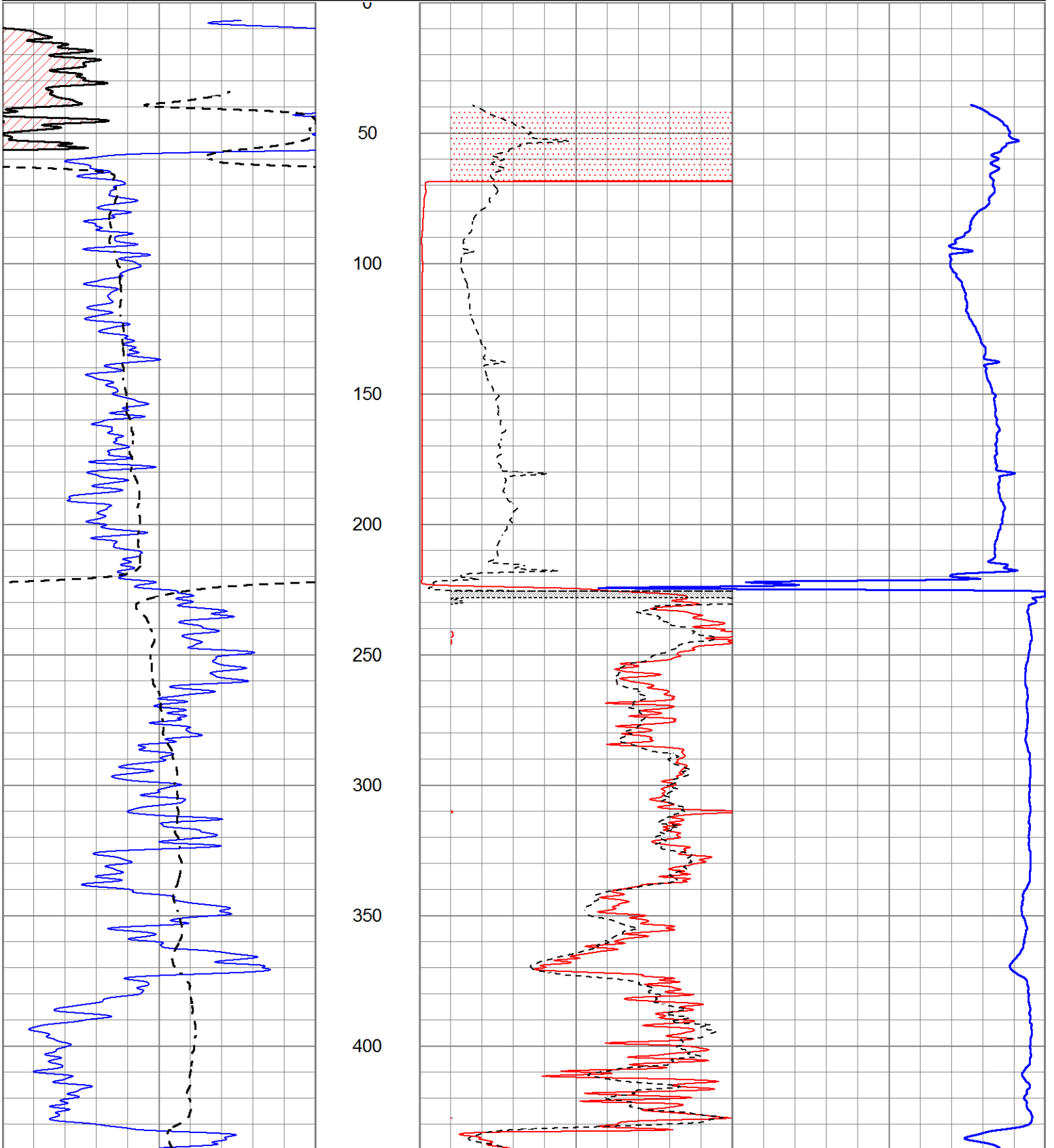


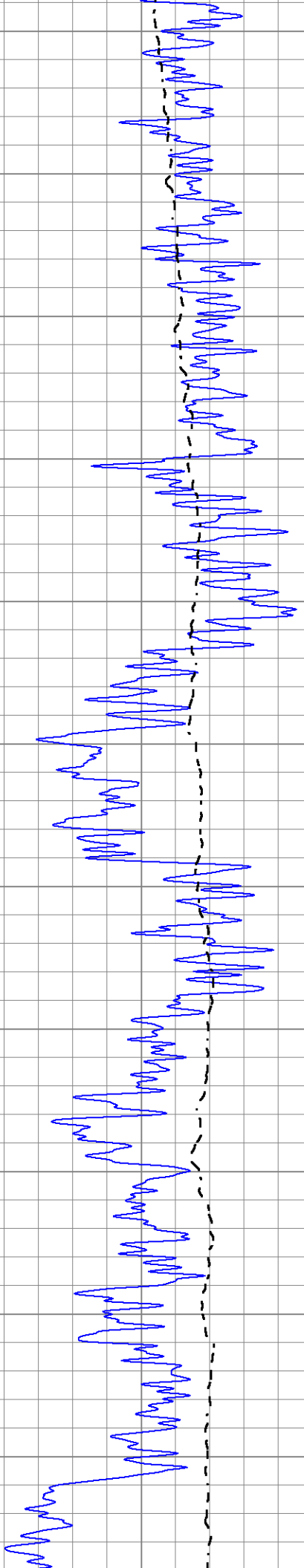
MAIN PASS

Database File 5029ddn.db
 Dataset Pathname pass4.1
 Presentation Format _dil2
 Dataset Creation Thu Oct 01 14:35:47 2020
 Charted by Depth in Feet scaled 1:600

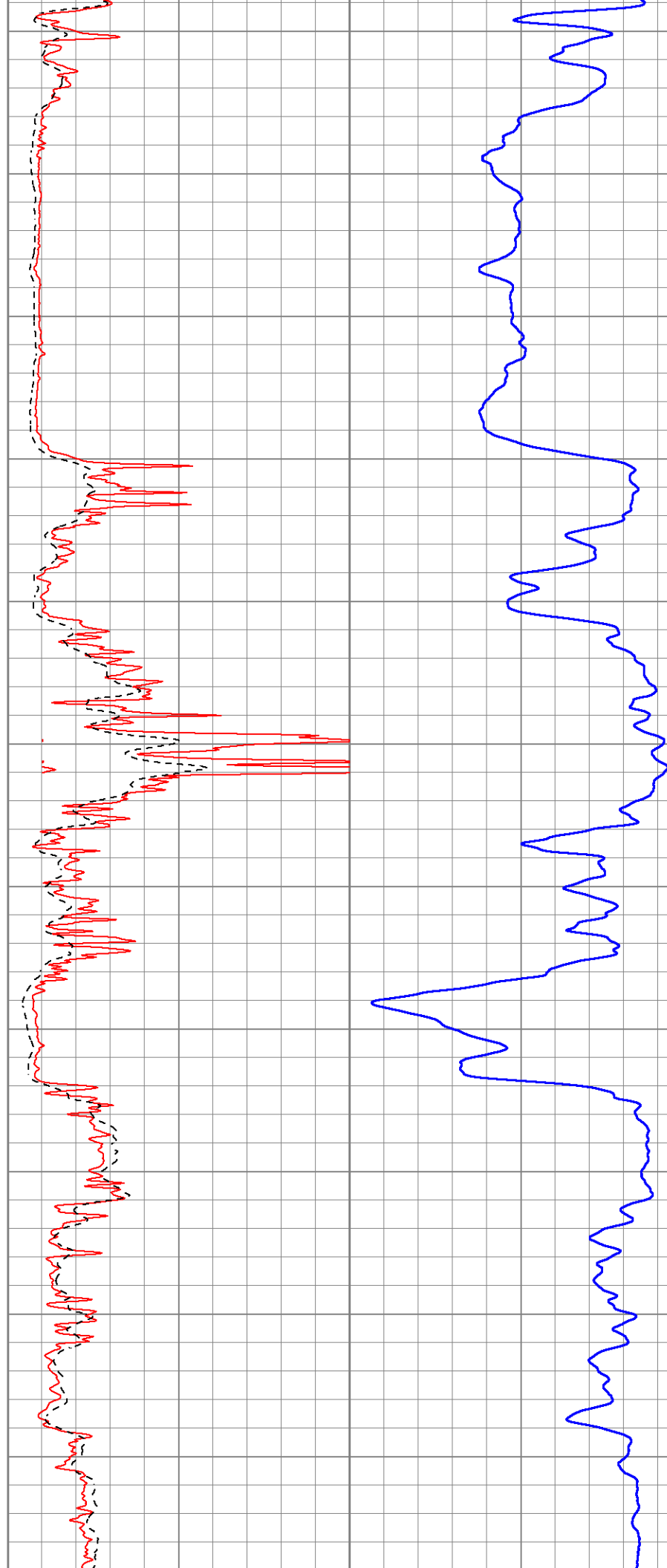
0	Gamma Ray (GAPI)	150
-100	SP (mV)	100

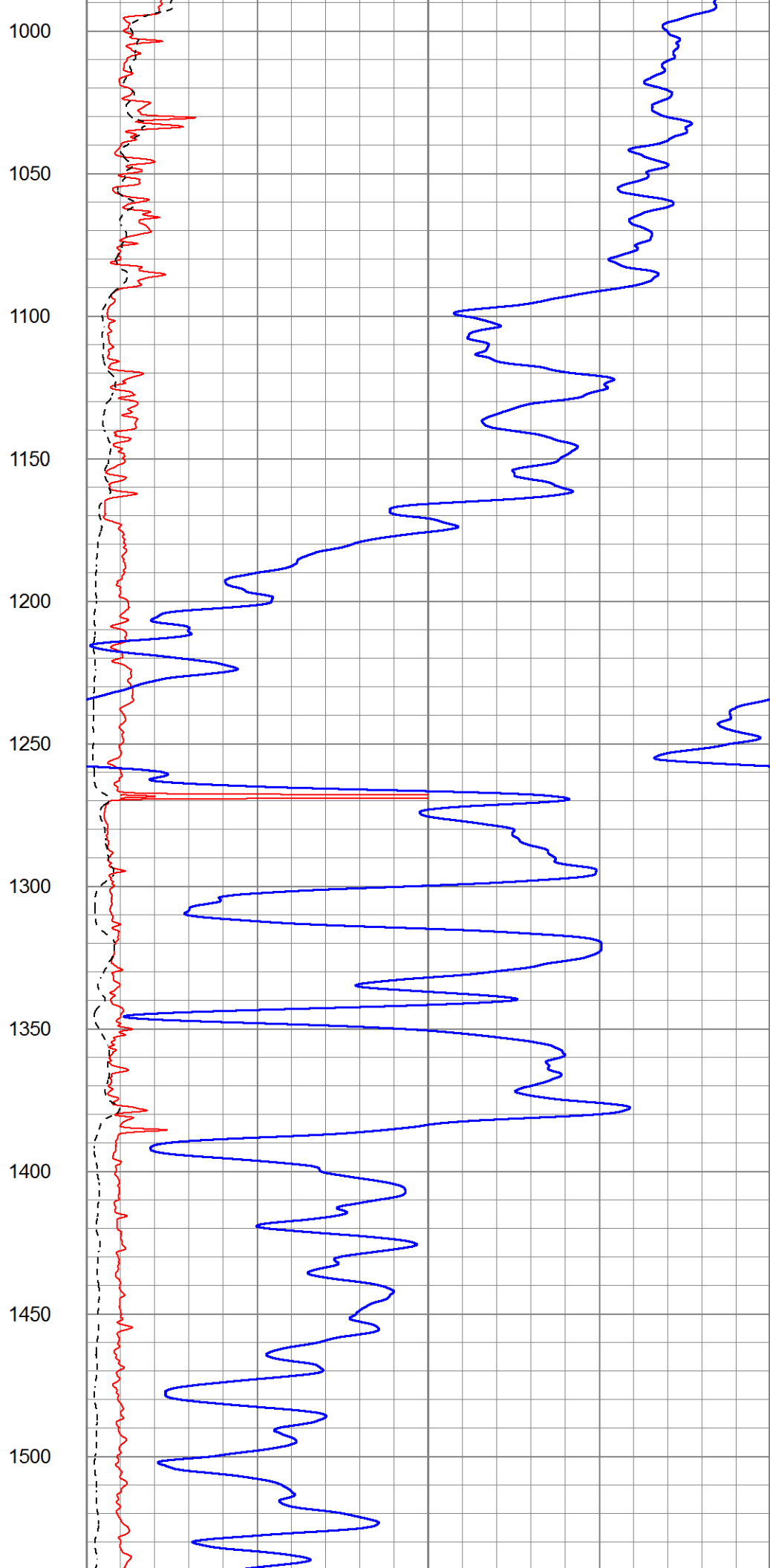
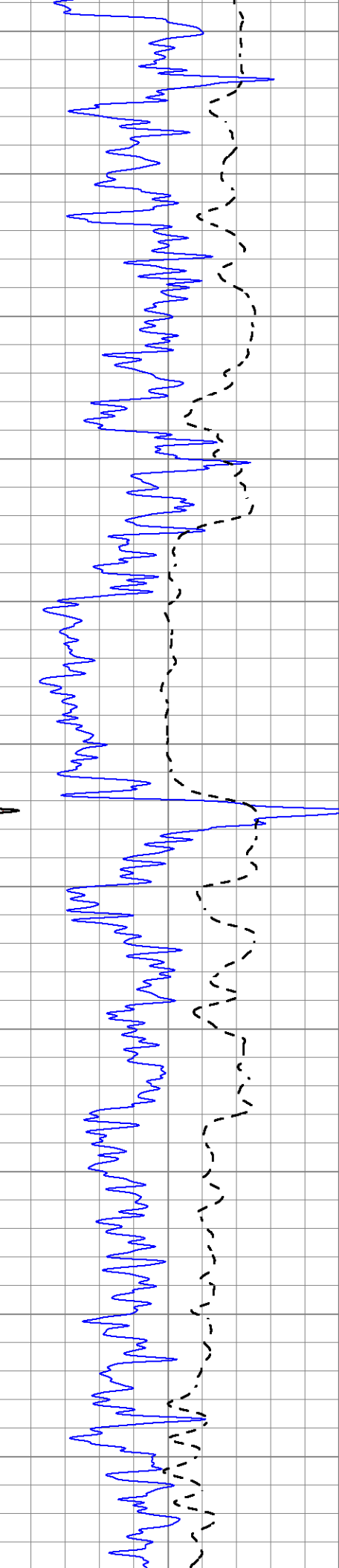
1000	CILD (mmho/m)	0
0	RLL3 (Ohm-m)	50
0	RILD (Ohm-m)	50
50	RILD X10 (Ohm-m)	500
50	RLL3 X10 (Ohm-m)	500

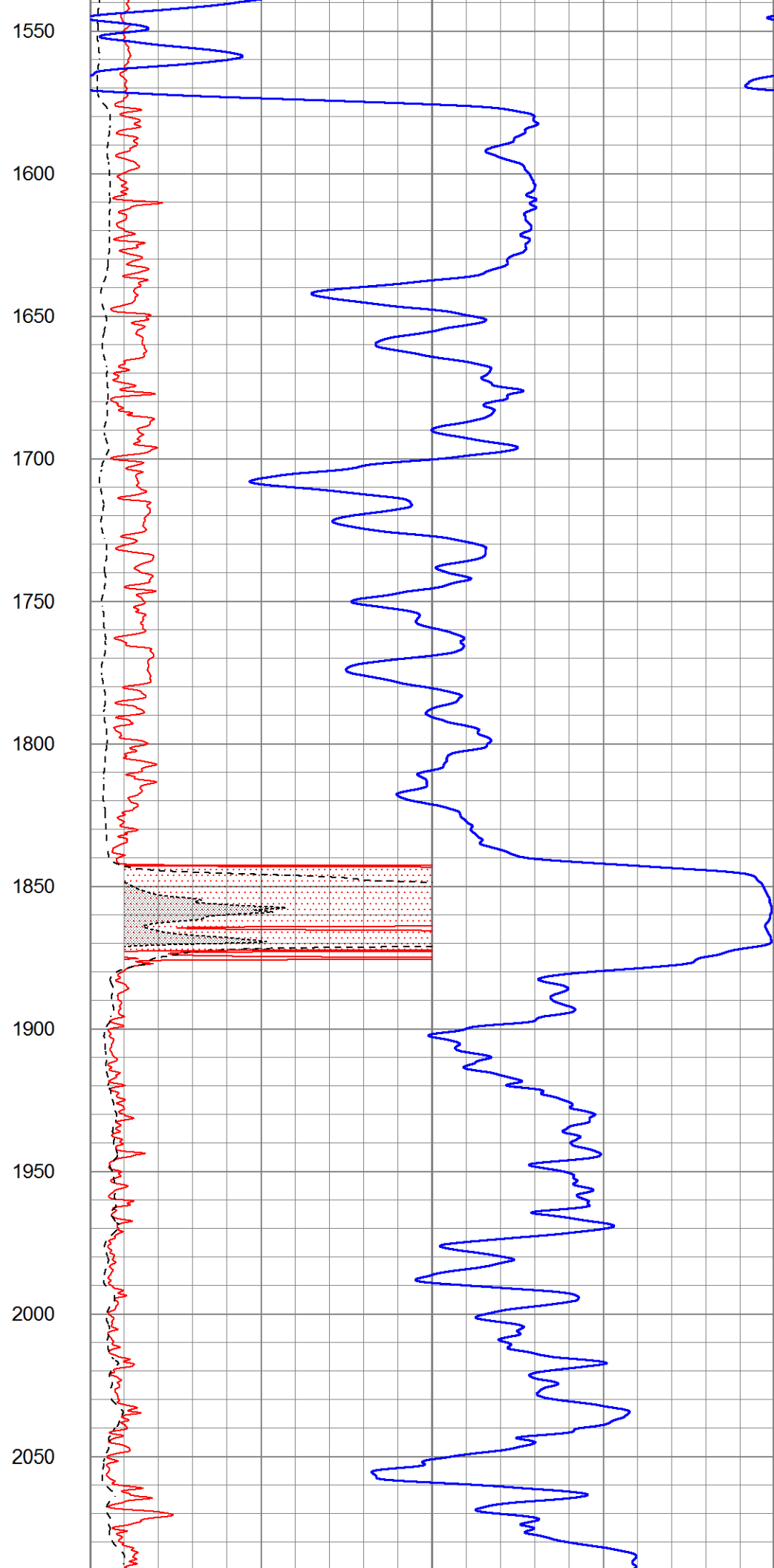
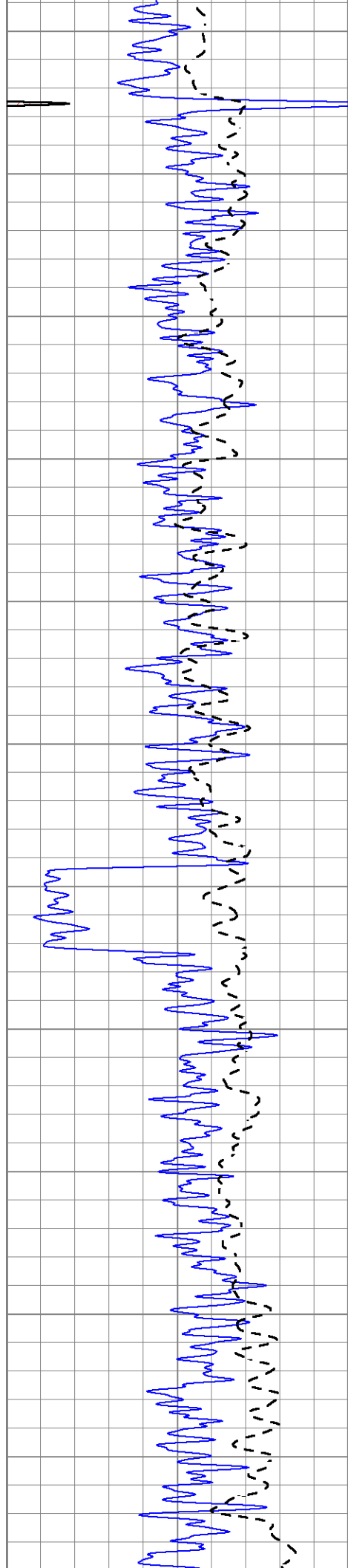


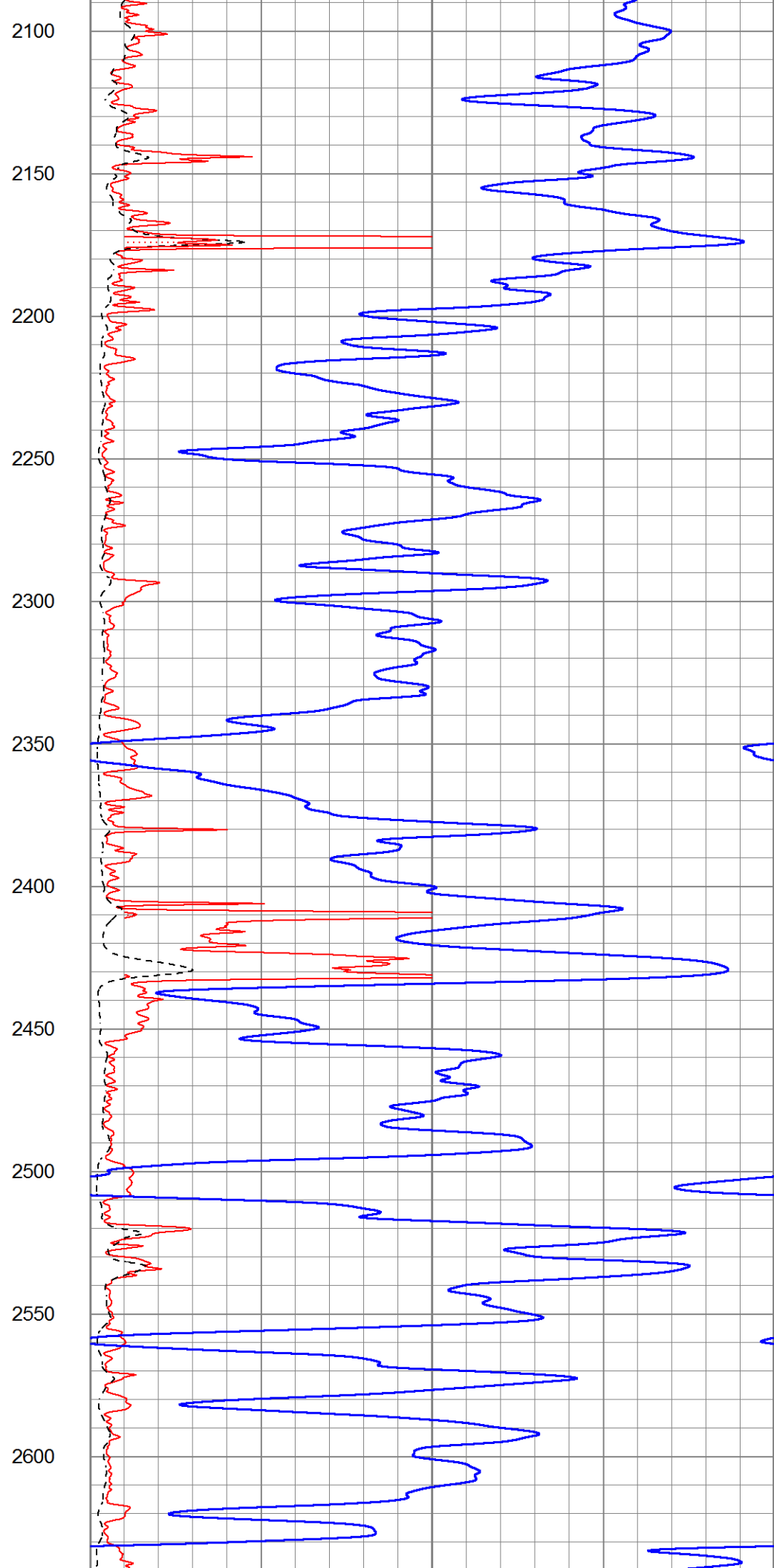
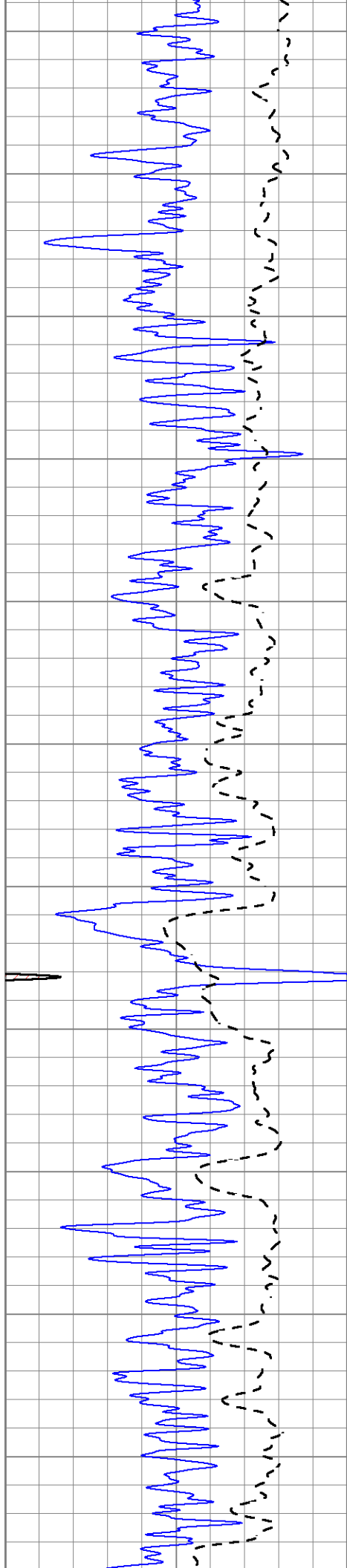


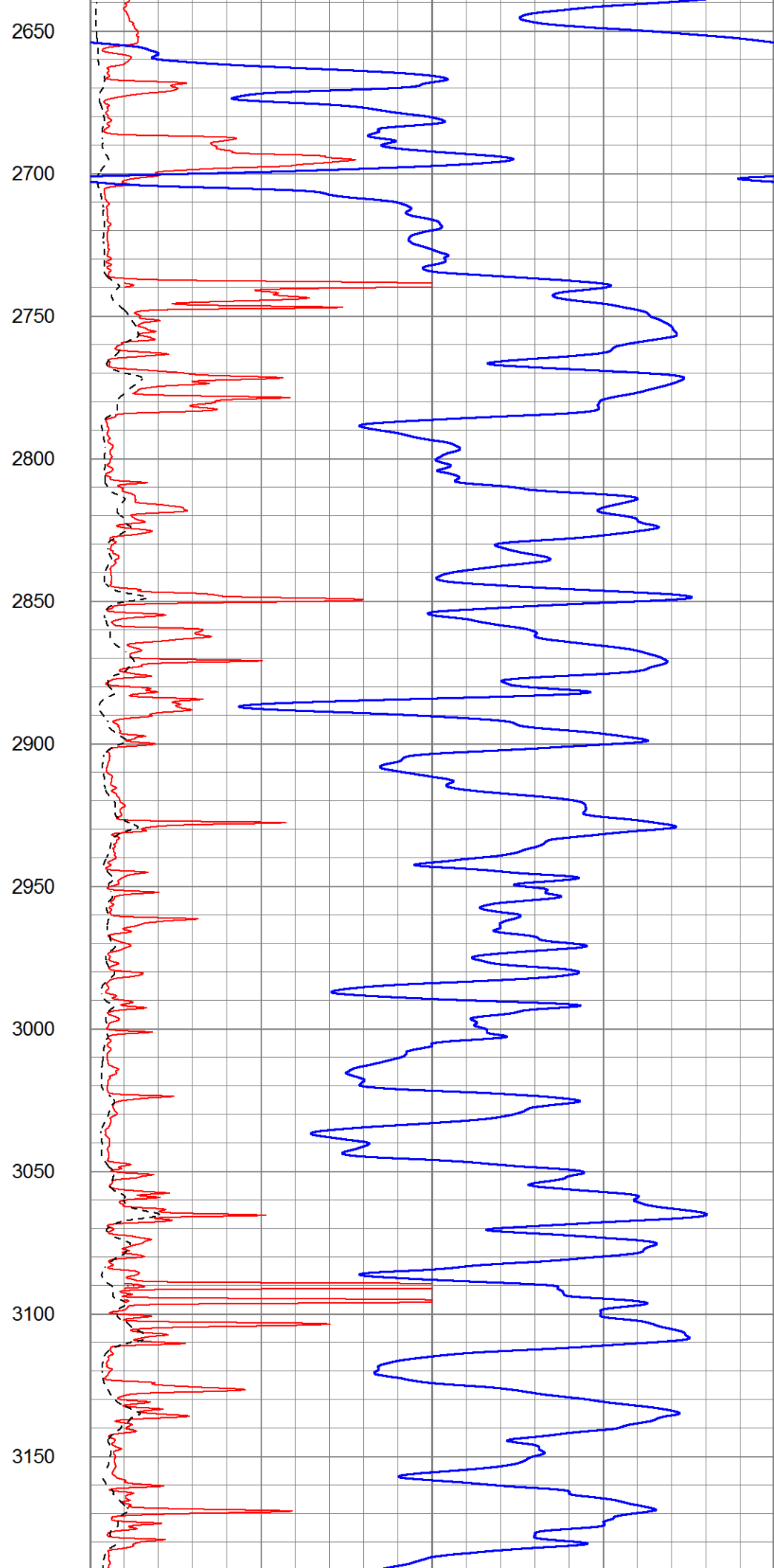
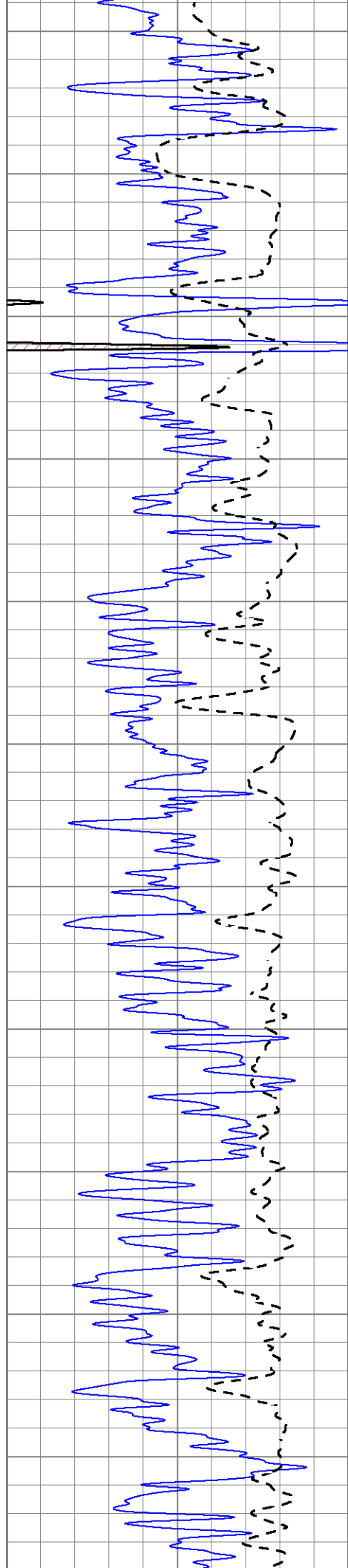
450
500
550
600
650
700
750
800
850
900
950

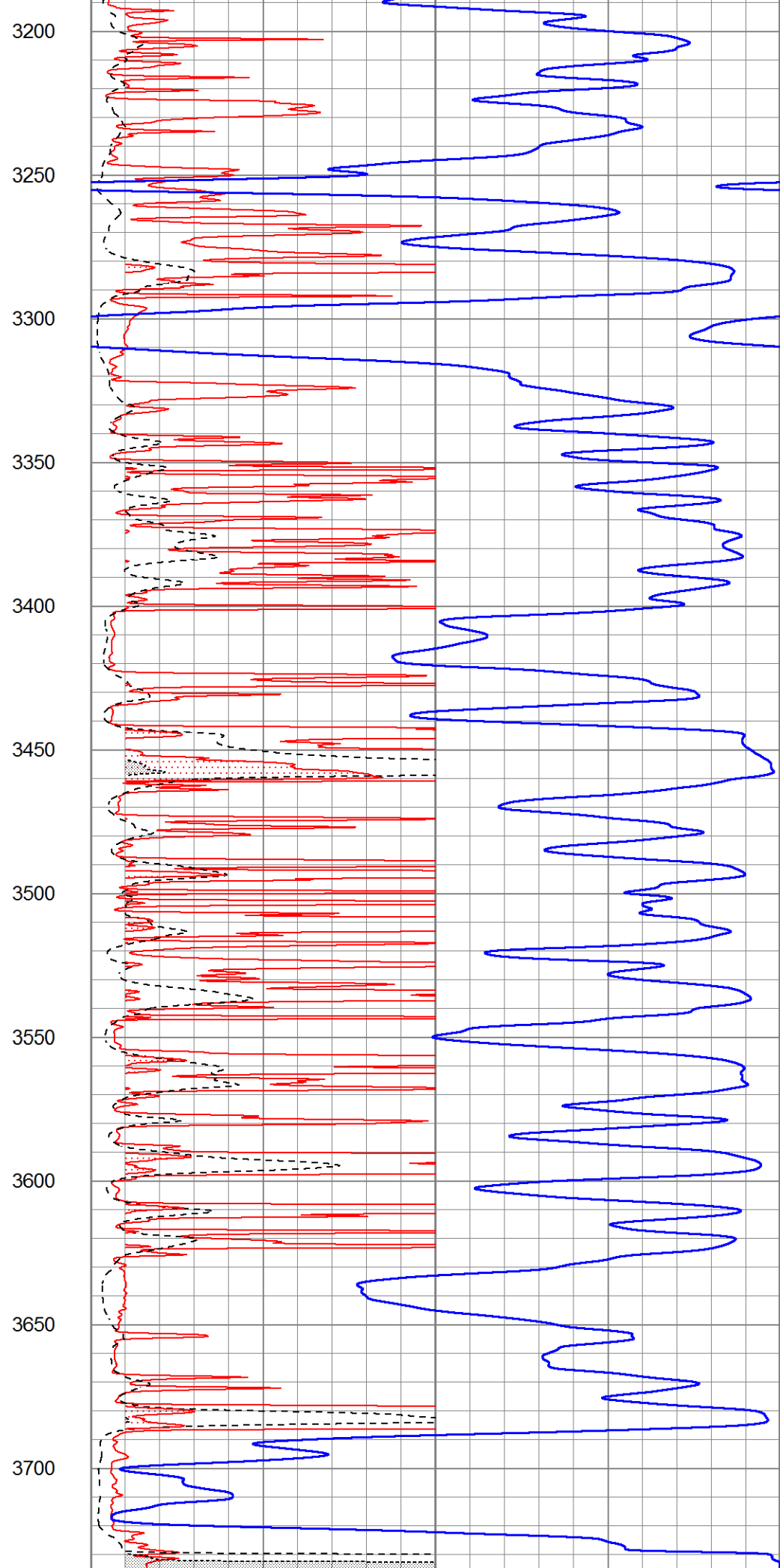
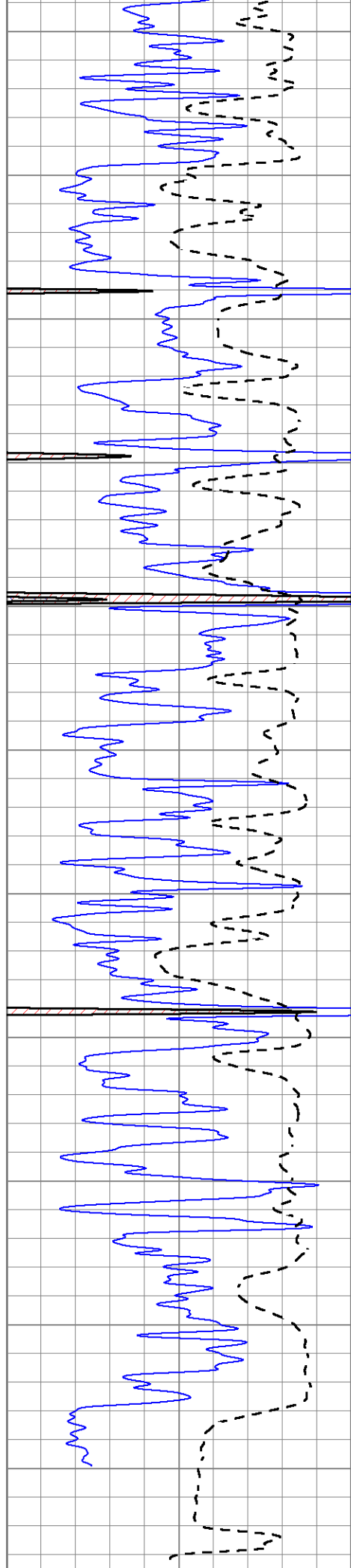












0	Gamma Ray (GAPI)	150
-100	SP (mV)	100

1000	CILD (mmho/m)		0
0	RLL3 (Ohm-m)	50	
0	RILD (Ohm-m)	50	
50	RILD X10 (Ohm-m)	500	
50	RLL3 X10 (Ohm-m)	500	

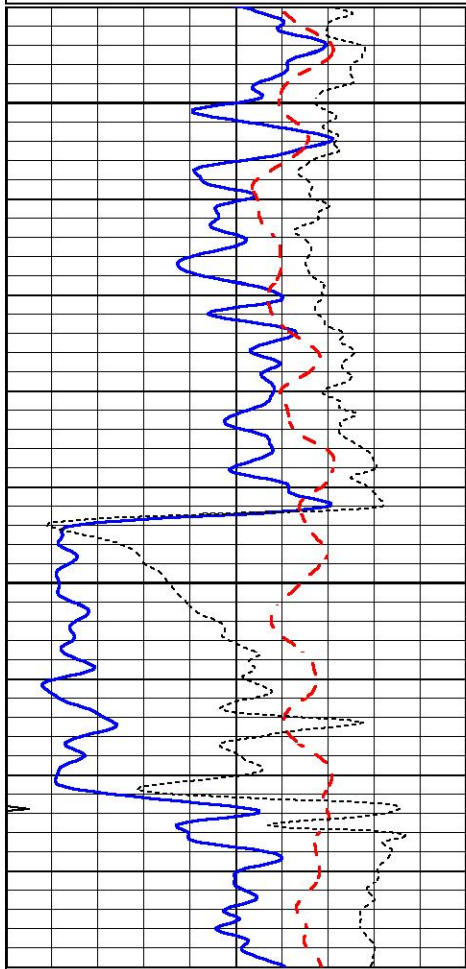


MAIN PASS

Database File 5029ddn.db
 Dataset Pathname pass4.1
 Presentation Format _dil
 Dataset Creation Thu Oct 01 14:35:47 2020
 Charted by Depth in Feet scaled 1:240

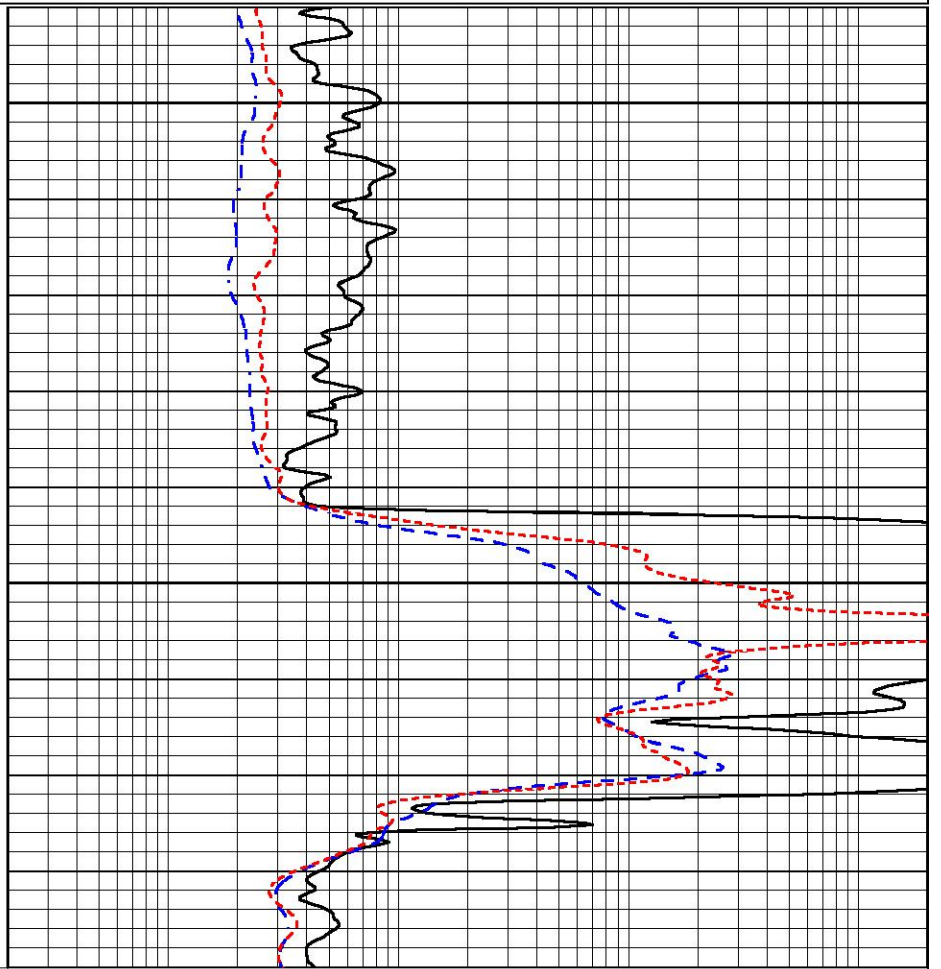
0	GAMMA RAY (GAPI)	150
-100	SP (mV)	100
-250	Rxo/Rt	50
0	MINMK	20

0.2	SHALLOW GUARD (Ohm-m)	2000
0.2	DEEP INDUCTION (Ohm-m)	2000
0.2	MEDIUM INDUCTION (Ohm-m)	2000



1800

1850



0	GAMMA RAY (GAPI)	150
-100	SP (mV)	100
-250	Rxo/Rt	50
0	MINMK	20

0.2	SHALLOW GUARD (Ohm-m)	2000
0.2	DEEP INDUCTION (Ohm-m)	2000
0.2	MEDIUM INDUCTION (Ohm-m)	2000



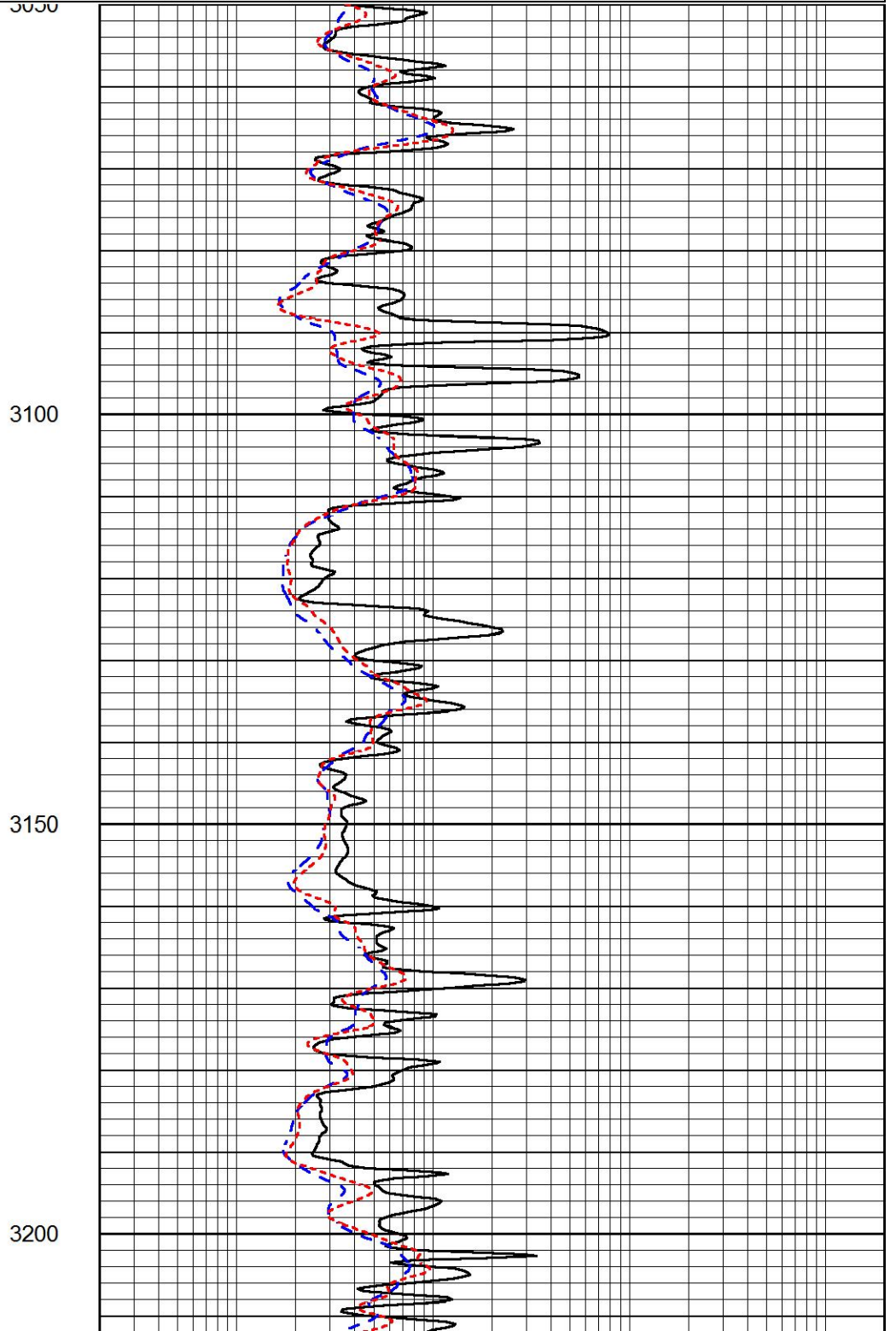
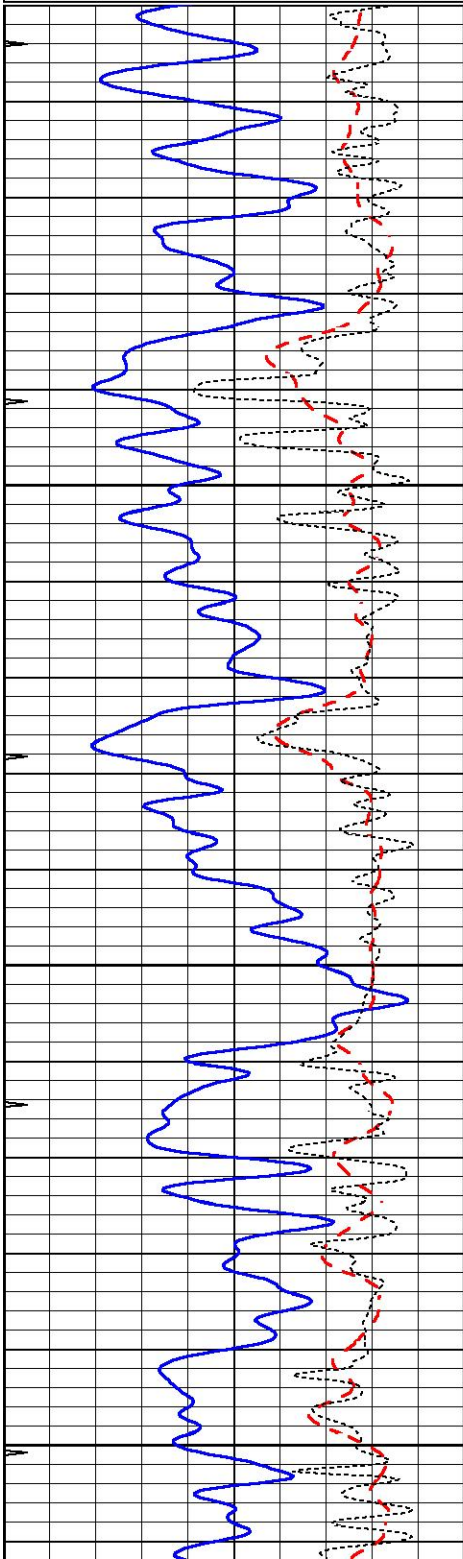


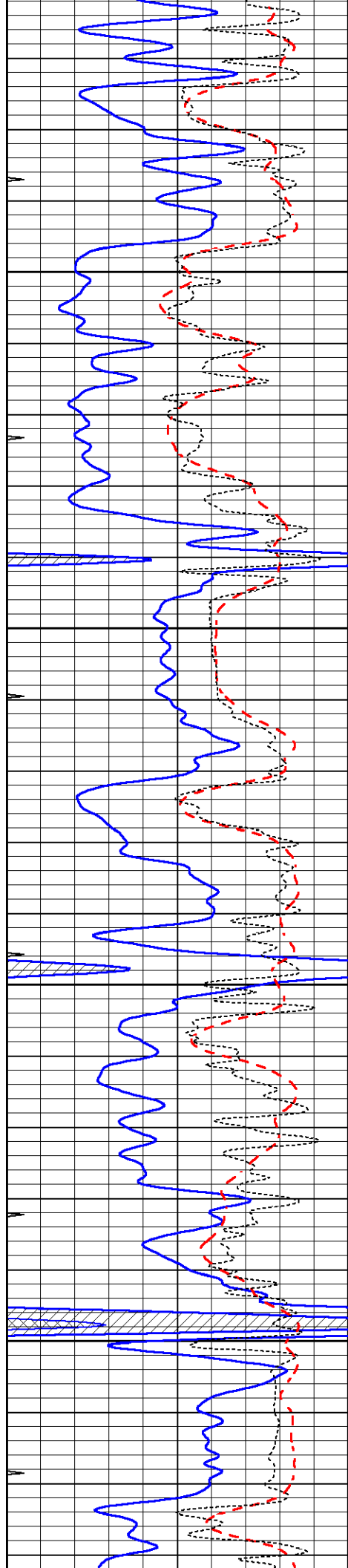
MAIN PASS

Database File 5029ddn.db
Dataset Pathname pass4.1
Presentation Format _dil
Dataset Creation Thu Oct 01 14:35:47 2020
Charted by Depth in Feet scaled 1:240

0	GAMMA RAY (GAPI)	150
-100	SP (mV)	100
-250	Rxo/Rt	50
0	MINMK	20

0.2	SHALLOW GUARD (Ohm-m)	2000
0.2	DEEP INDUCTION (Ohm-m)	2000
0.2	MEDIUM INDUCTION (Ohm-m)	2000



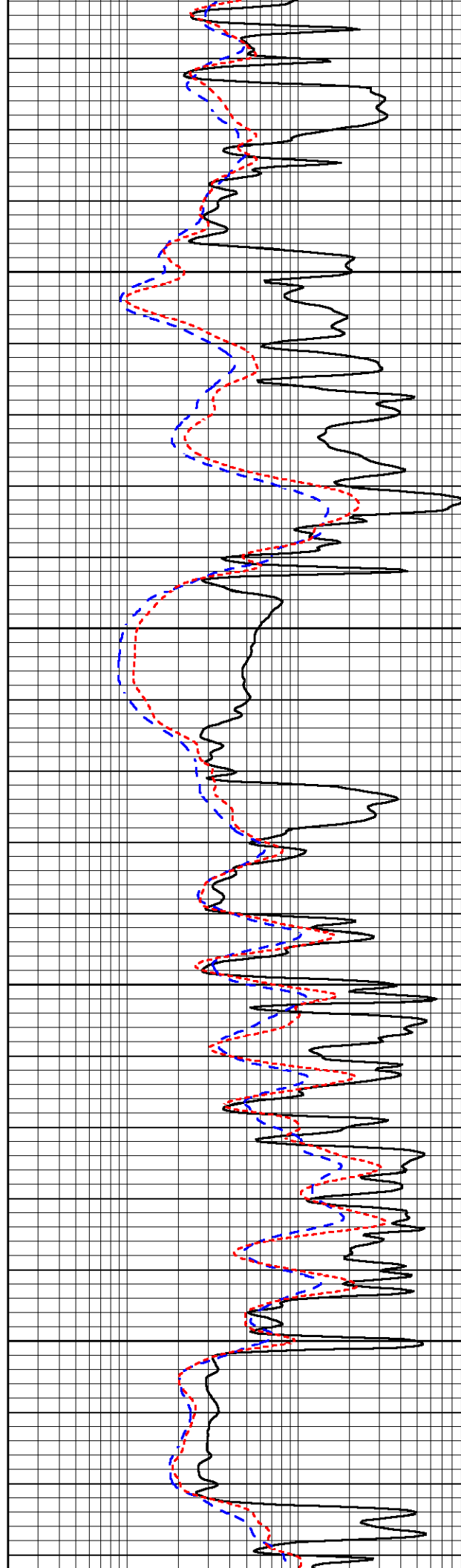


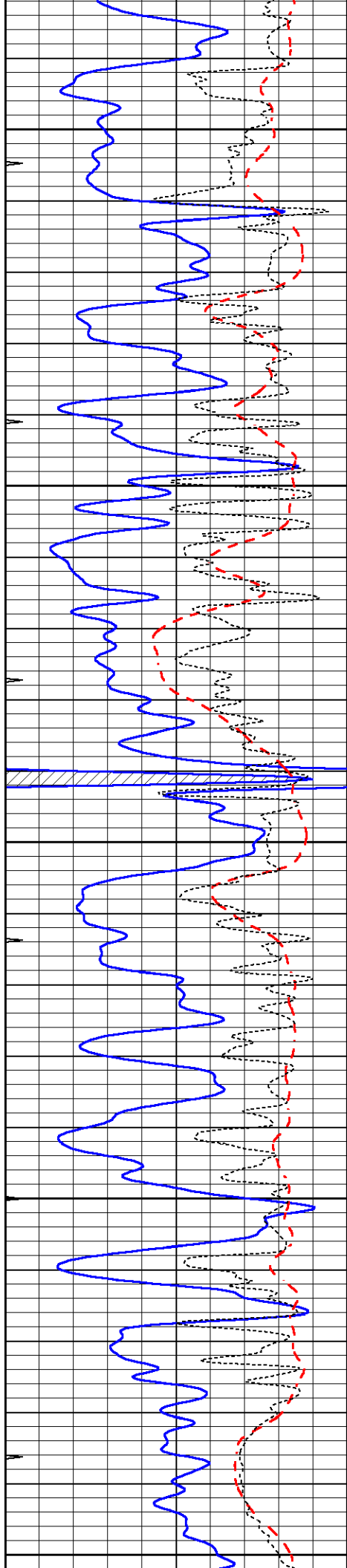
3250

3300

3350

3400





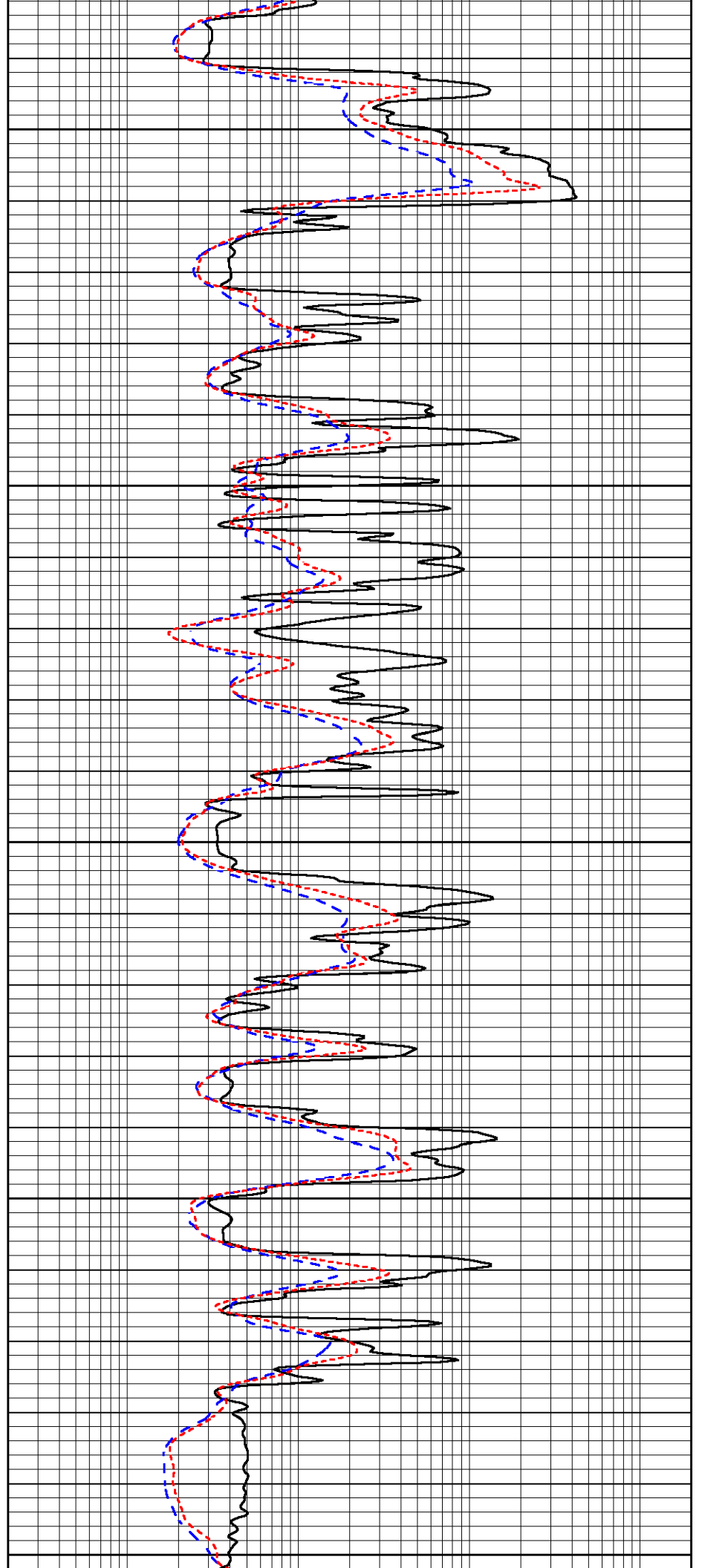
3450

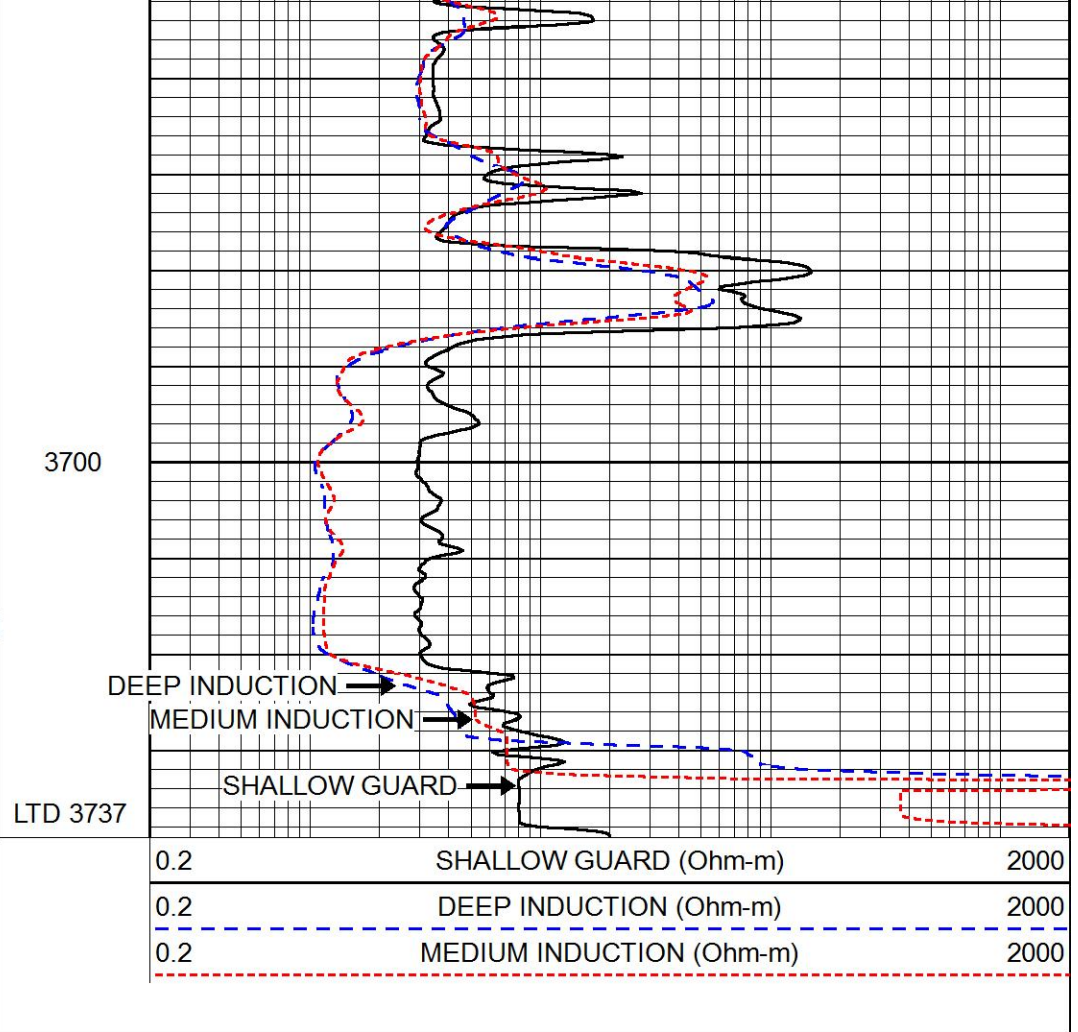
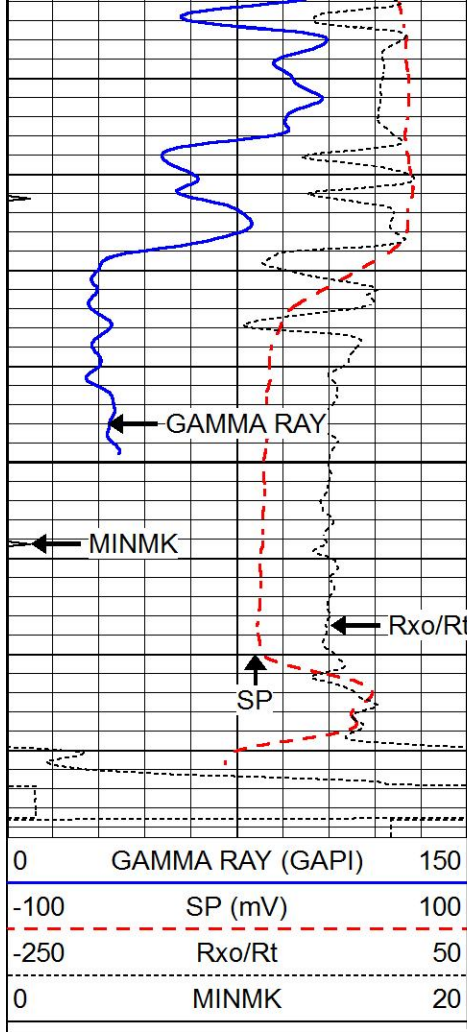
3500

3550

3600

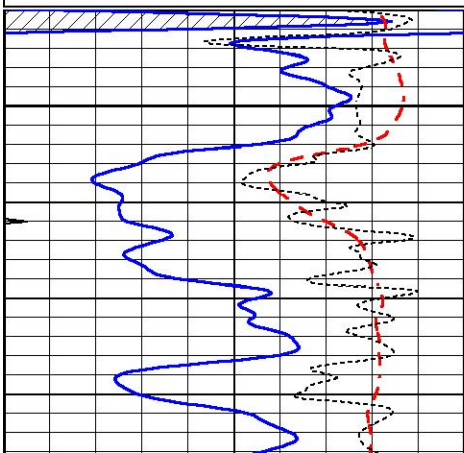
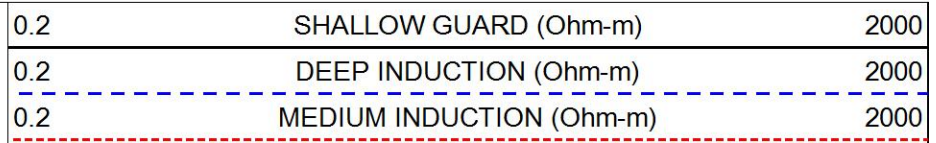
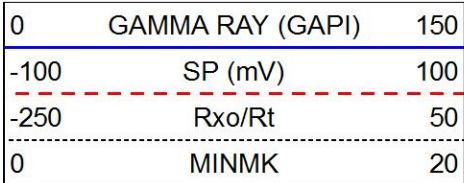
3650



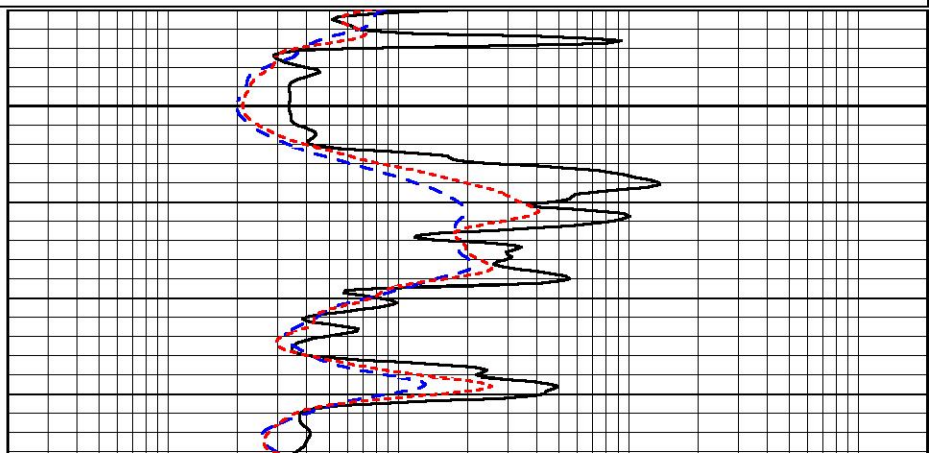


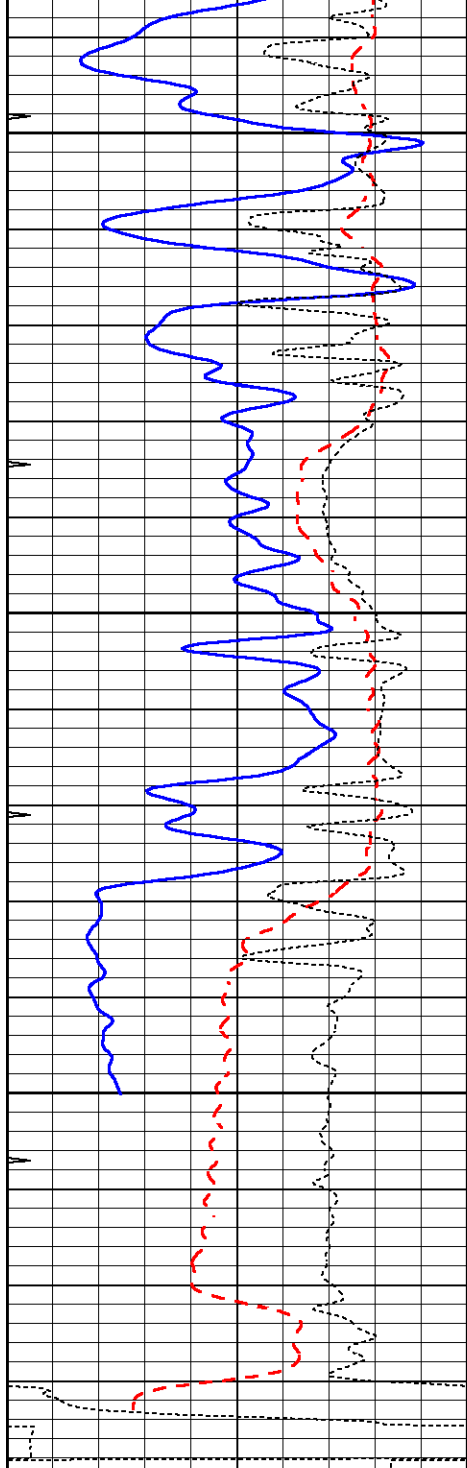
REPEAT SECTION

Database File 5029ddn.db
 Dataset Pathname pass3.1
 Presentation Format _dil
 Dataset Creation Thu Oct 01 14:14:33 2020
 Charted by Depth in Feet scaled 1:240



3550



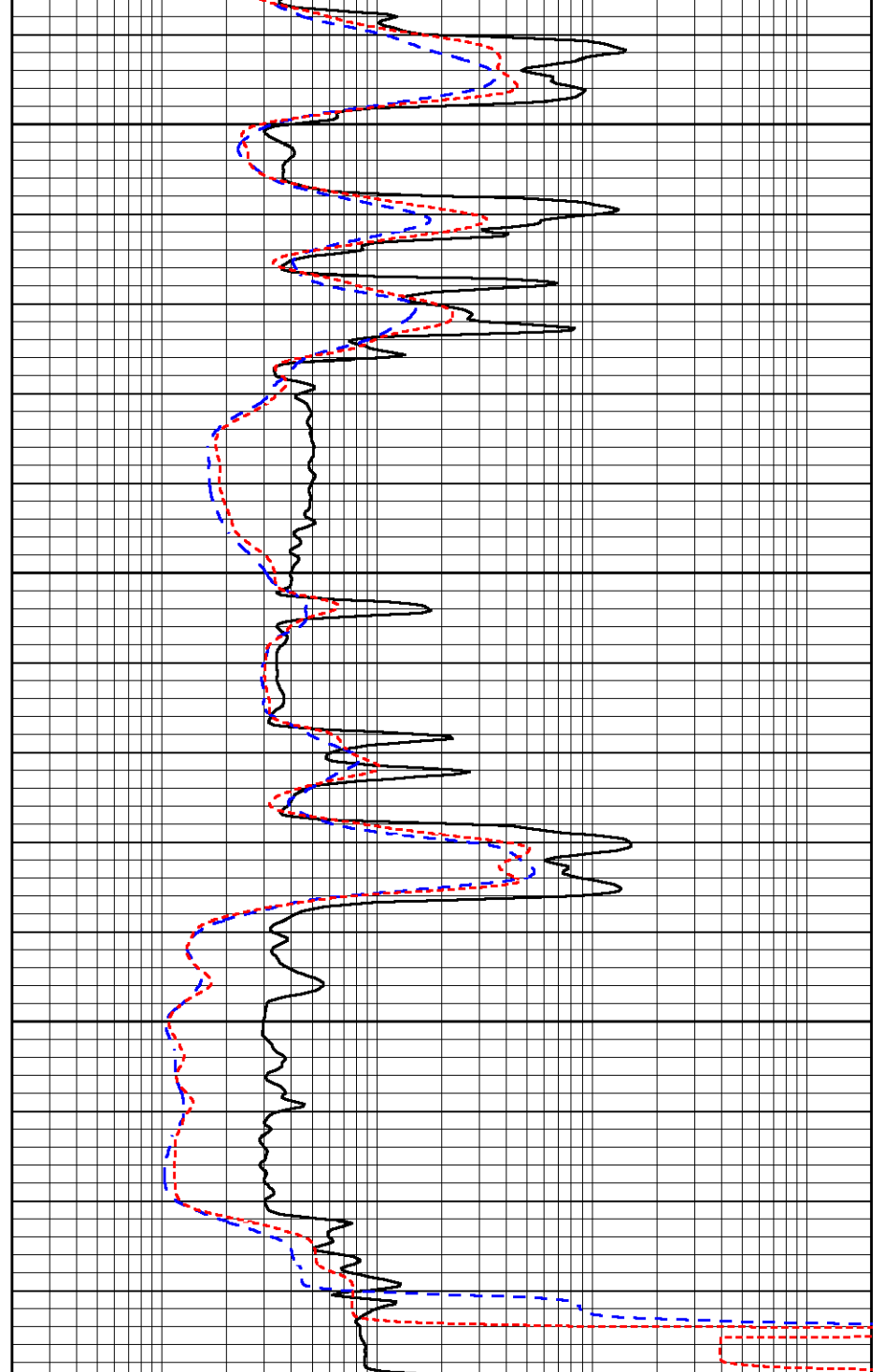


3600

3650

3700

0	GAMMA RAY (GAPI)	150
-100	SP (mV)	100
-250	Rxo/Rt	50
0	MINMK	20



0.2	SHALLOW GUARD (Ohm-m)	2000
0.2	DEEP INDUCTION (Ohm-m)	2000
0.2	MEDIUM INDUCTION (Ohm-m)	2000

Calibration Report

Database File 5029ddn.db
 Dataset Pathname pass3.1
 Dataset Creation Thu Oct 01 14:14:33 2020

Dual Induction Calibration Report

Serial-Model:	PROBE8-DILG
Surface Cal Performed:	Mon Sep 10 14:28:35 2018
Downhole Cal Performed:	Mon Sep 10 14:28:38 2018
After Survey Verification Performed:	Mon Sep 10 14:28:40 2018

Surface Calibration				References			Results	
Loop:	Readings			Air	Loop		m	b
	Air	Loop	V					
Deep	0.015	0.648	V	0.000	400.000	mmho/m	620.000	0.000
Medium	0.029	0.796	V	0.000	464.000	mmho/m	590.000	-12.000
Internal:	Readings			Zero	Cal		m	b
Deep	0.017	0.657	V	0.000	400.000	mmho/m	625.153	-10.619
Medium	0.016	0.757	V	0.000	464.000	mmho/m	625.992	-9.739

Downhole Calibration				References			Results	
	Readings			Zero	Cal		m'	b'
	Zero	Cal	V					
Deep	0.000	0.000	mmho/m	2.011	405.777	mmho/m	1.000	0.000
Medium	0.000	0.000	mmho/m	7.590	503.393	mmho/m	1.000	0.000
LL3		7.500	V		1500.000	Ohm-m		
		0.000	V		20.000	Ohm-m		
		-7.200	V		3800.000	mmho-m		

After Survey Verification				Targets			Results	
	Readings			Zero	Cal		m'	b'
	Zero	Cal	V					
Deep	0.000	0.000	mmho/m	0.000	0.000	mmho/m	0.000	0.000
Medium	0.000	0.000	mmho/m	0.000	0.000	mmho/m	0.000	0.000
LL3		1.000	Ohm-m		1.000	Ohm-m		
		0.000	Ohm-m		0.000	Ohm-m		
		1.000	mmho-m		1.000	mmho-m		

Litho Density Calibration Report
Serial: 001N Model: PRB

Master Calibration		Performed Thu Mar 19 11:30:16 2020			
	Background	Magnesium	Aluminum	Aluminum+Fe	
Window 1	1572.2	7510.8	2837.3	2643.1	cps
Window 2	1446.2	6523.9	2552.8	2409.9	cps
Window 3	1060.9	3611.4	1731.5	1684.8	cps
Window 4	145.5	363.4	363.2	368.1	cps
Long Space	0.0	5077.7	1106.6	963.7	cps
Short Space	3.1	1709.3	1103.4	916.9	cps
Rho		1.7100	2.5900	0.0000	g/cc
Pe		2.0000	2.7500	5.7900	
Rib Angle	: 44.0	Rib Slope	: 0.965	Density/Spine Ratio	: 0.555
Spine Angle	: 74.0	Spine Slope	: 3.481	Spine Intercept	: -17.4

Before Survey Verification		Performed Wed Dec 31 18:00:00 1969			
	Background	Magnesium	Aluminum	Aluminum+Fe	
Window 1	0.0	0.0	0.0	0.0	cps
Window 2	0.0	0.0	0.0	0.0	cps
Window 3	0.0	0.0	0.0	0.0	cps
Window 4	0.0	0.0	0.0	0.0	cps
Long Space	0.0	0.0	0.0	0.0	cps
Short Space	0.0	0.0	0.0	0.0	cps
Measured Rho		0.0000	0.0000	0.0000	g/cc
Measured Correction		0.0000	0.0000	0.0000	g/cc
Measured Pe			0.0000	0.0000	

Window 1	0.0	0.0	0.0	0.0	cps
Window 2	0.0	0.0	0.0	0.0	cps
Window 3	0.0	0.0	0.0	0.0	cps
Window 4	0.0	0.0	0.0	0.0	cps
Long Space	0.0	0.0	0.0	0.0	cps
Short Space	0.0	0.0	0.0	0.0	cps
Measured Rho		0.0000	0.0000	0.0000	g/cc
Measured Correction		0.0000	0.0000	0.0000	g/cc
Measured Pe			0.0000	0.0000	

Compensated Neutron Calibration Report

Serial Number: 6I
 Tool Model: G

CALIBRATION

Detector	Readings	Target	Normalization
Short Space	1.00 cps	1.00 cps	1.0000
Long Space	1.00 cps	1.00 cps	1.0000

PRE-SURVEY VERIFICATION

	Detector	Readings	Measured	Target
1)	Short Space	cps		
	Long Space	cps	pu	pu
2)	Short Space	cps		
	Long Space	cps	pu	
3)	Short Space	cps		
	Long Space	cps	pu	

POST-SURVEY VERIFICATION

	Detector	Readings	Measured	Target
1)	Short Space	cps		
	Long Space	cps	pu	pu
2)	Short Space	cps		
	Long Space	cps	pu	pu
3)	Short Space	cps		
	Long Space	cps	pu	pu

Gamma Ray Calibration Report

Serial Number: GR6
 Tool Model: OPEN
 Performed: Thu Jul 30 20:04:35 2020

Calibrator Value: 150.0 GAPI

Background Reading: 0.0 cps
 Calibrator Reading: 276.0 cps

Sensitivity: 0.7500 GAPI/cps