



**COMPENSATED
DENSITY/NEUTRON
LOG**

Company FOURWINDS OIL CORP.
Well GW UNIT #1
Field UNNAMED
County NORTON
State KANSAS

Company FOURWINDS OIL CORP.
Well GW UNIT #1
Field UNNAMED
County NORTON State KANSAS

Location: API #: 15-137-20757-0000
660' FNL & 2440' FWL
SEC 28 TWP 5S RGE 21W
Permanent Datum GROUND LEVEL Elevation 2236
Log Measured From KELLY BUSHING 8' A.G.L.
Drilling Measured From KELLY BUSHING
Elevation
K.B. 2244
D.F. 2242
G.L. 2236

Date	10/01/20
Run Number	ONE
Depth Driller	3740
Depth Logger	3737
Bottom Logged Interval	3717
Top Log Interval	3050
Casing Driller	8 5/8" @ 222
Casing Logger	222
Bit Size	7 7/8"
Type Fluid in Hole	CHEMICAL MUD
Density / Viscosity	9.2/58
pH / Fluid Loss	10.0/8.8
Source of Sample	FLOWLINE
Rm @ Meas. Temp	2.0@ 72F
Rmf @ Meas. Temp	1.5@ 72F
Rmc @ Meas. Temp	2.4 @ 72F
Source of Rmf / Rmc	MEASURED
Rm @ BHT	1.26@ 114F
Time Circulation Stopped	2 HOURS
Time Logger on Bottom	////
Maximum Recorded Temperature	114F
Equipment Number	1523
Location	HAYS, KANSAS
Recorded By	GUS PFANENSTIEL
Witnessed By	JEFF LAWLER

<<< Fold Here >>>

All interpretations are opinions based on inferences from electrical or other measurements and we cannot and do not guarantee the accuracy or correctness of any interpretation, and we shall not, except in the case of gross or willful negligence on our part, be liable or responsible for any loss, costs, damages, or expenses incurred or sustained by anyone resulting from any interpretation made by any of our officers, agents or employees. These interpretations are also subject to our general terms and conditions set out in our current Price Schedule.

Comments

THANK YOU FOR USING ELI WIRELINE, HAYS, KS. (785) 628-6395

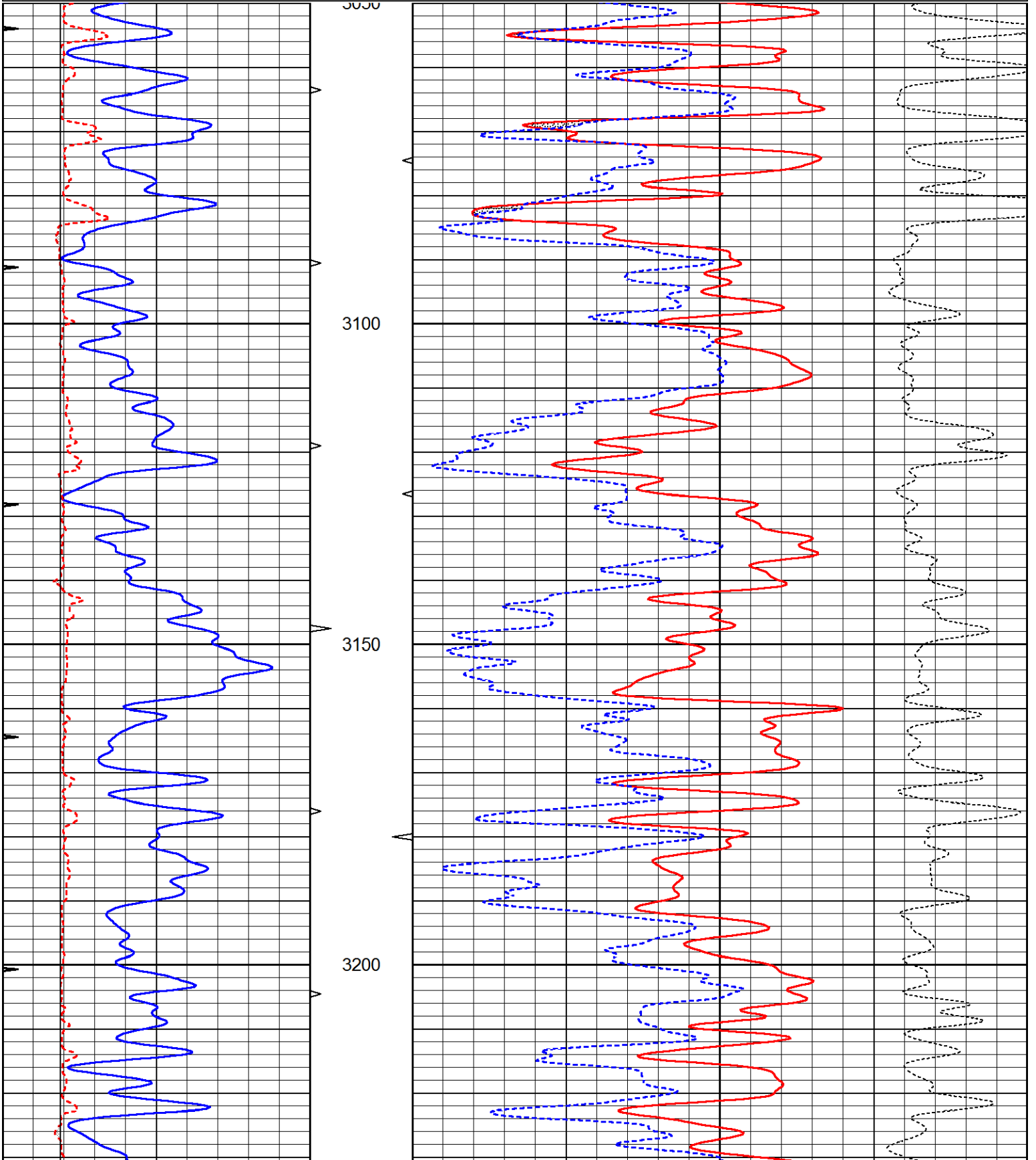
DIRECTIONS: 4 WEST OF LOGAN TO RD E 12, SOUTH TO RD Z.
WEST TO RD E 11, 3 SOUTH, WEST INTO.

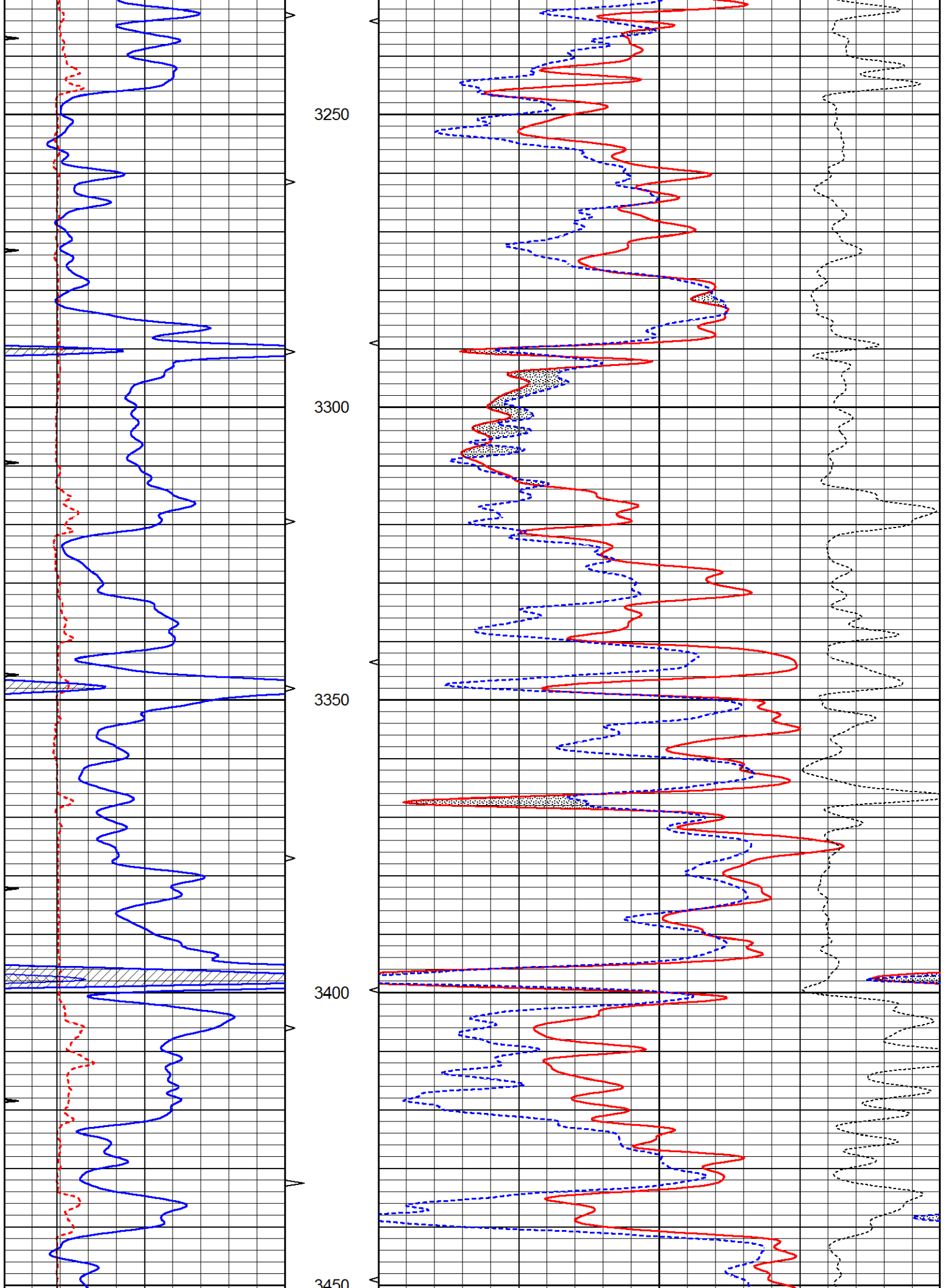


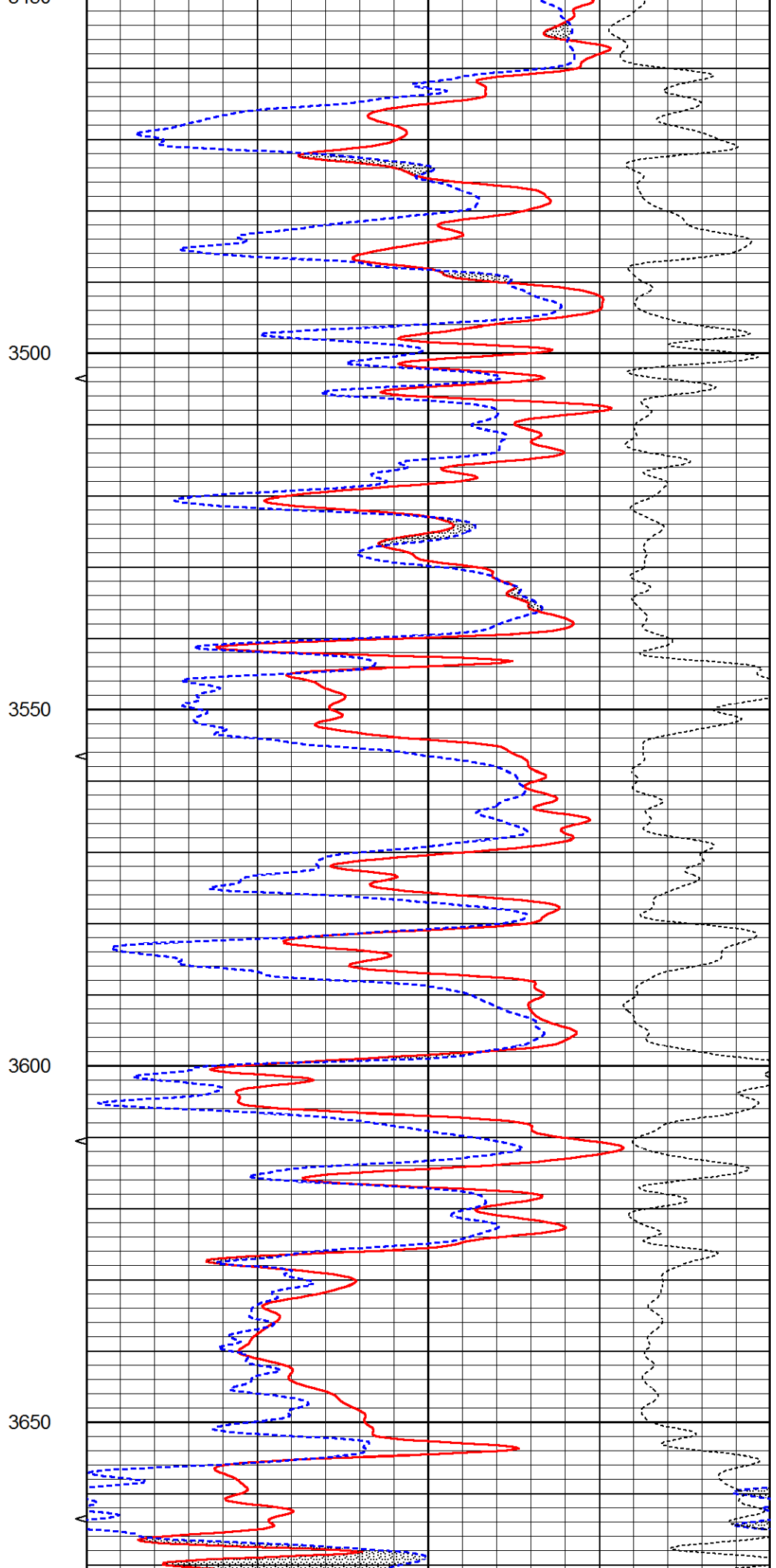
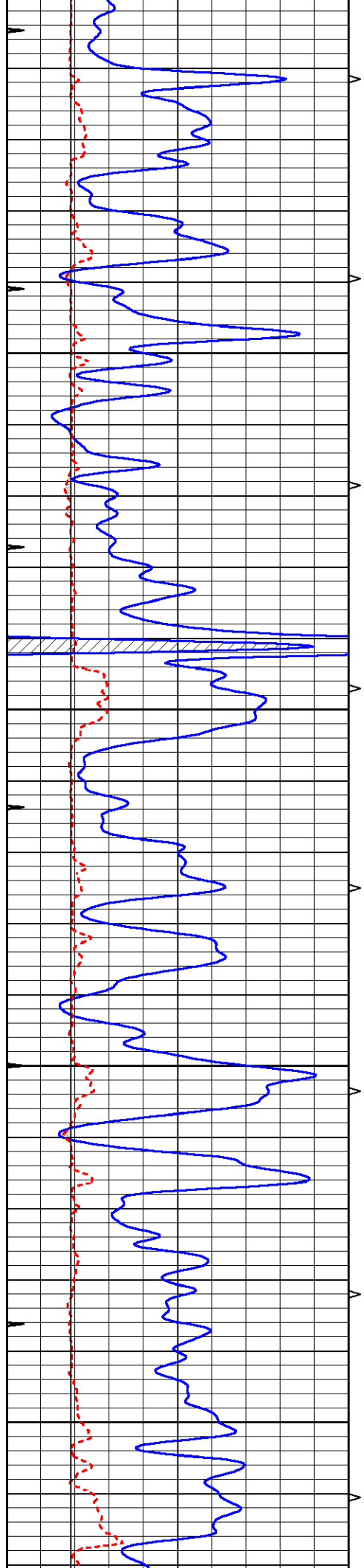
MAIN PASS

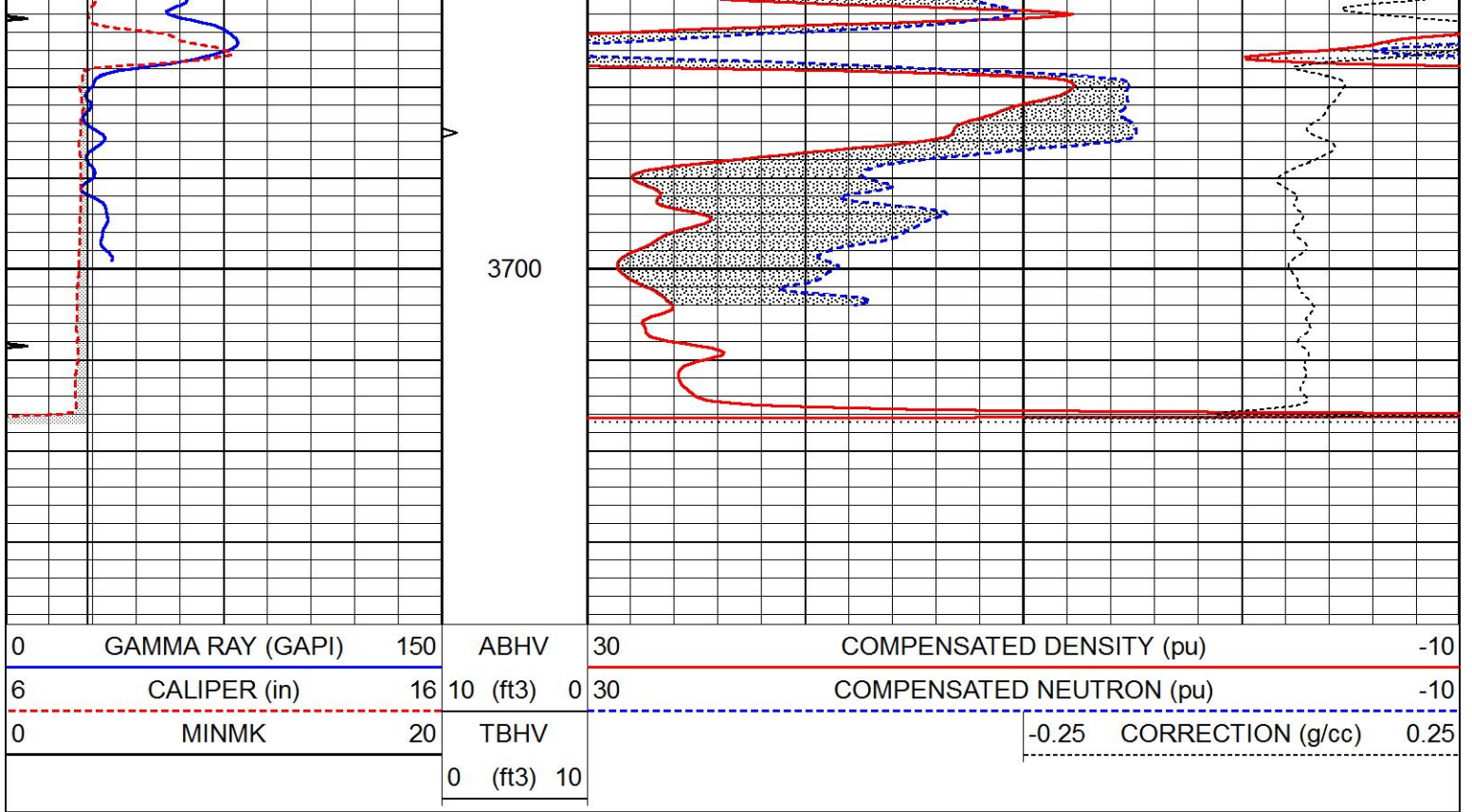
Database File 5029ddn.db
 Dataset Pathname pass4.1
 Presentation Format den_neu
 Dataset Creation Thu Oct 01 14:35:47 2020
 Charted by Depth in Feet scaled 1:240

0	GAMMA RAY (GAPI)	150	ABHV	30	COMPENSATED DENSITY (pu)	-10
6	CALIPER (in)	16	10 (ft3)	0	COMPENSATED NEUTRON (pu)	-10
0	MINMK	20	TBHV		-0.25 CORRECTION (g/cc)	0.25
			0 (ft3)	10		



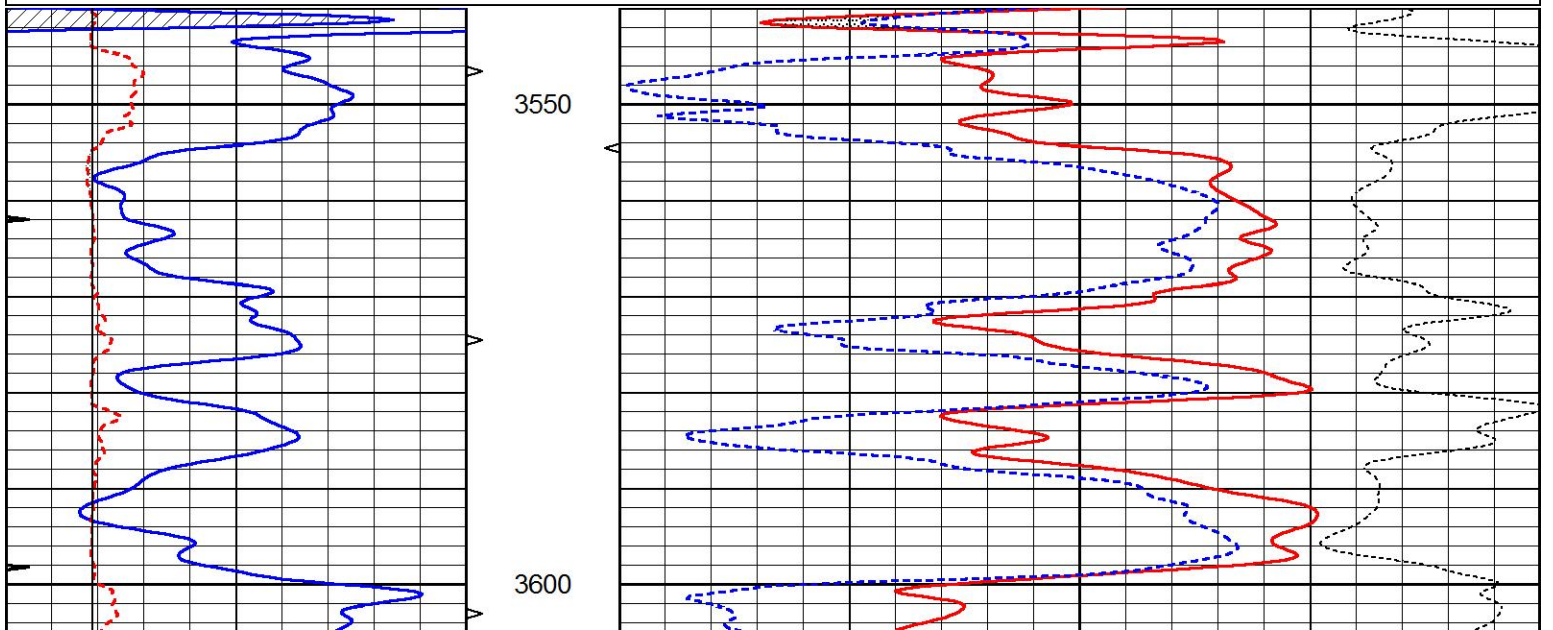
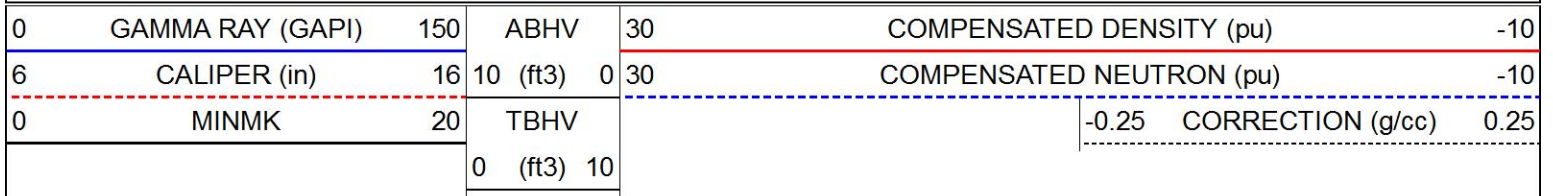






REPEAT SECTION

Database File 5029ddn.db
 Dataset Pathname pass3.1
 Presentation Format den_neu
 Dataset Creation Thu Oct 01 14:14:33 2020
 Charted by Depth in Feet scaled 1:240



Deep	0.029	0.796	V	0.000	464.000	mmho/m	590.000	-12.000
Internal:	Zero	Cal		Zero	Cal		m	b
Deep	0.017	0.657	V	0.000	400.000	mmho/m	625.153	-10.619
Medium	0.016	0.757	V	0.000	464.000	mmho/m	625.992	-9.739

Downhole Calibration								
	Readings			References			Results	
	Zero	Cal		Zero	Cal		m'	b'
Deep	0.000	0.000	mmho/m	2.011	405.777	mmho/m	1.000	0.000
Medium	0.000	0.000	mmho/m	7.590	503.393	mmho/m	1.000	0.000
LL3		7.500	V		1500.000	Ohm-m		
		0.000	V		20.000	Ohm-m		
		-7.200	V		3800.000	mmho-m		

After Survey Verification								
	Readings			Targets			Results	
	Zero	Cal		Zero	Cal		m'	b'
Deep	0.000	0.000	mmho/m	0.000	0.000	mmho/m	0.000	0.000
Medium	0.000	0.000	mmho/m	0.000	0.000	mmho/m	0.000	0.000
LL3		1.000	Ohm-m		1.000	Ohm-m		
		0.000	Ohm-m		0.000	Ohm-m		
		1.000	mmho-m		1.000	mmho-m		

Litho Density Calibration Report
Serial: 001N Model: PRB

Master Calibration		Performed Thu Mar 19 11:30:16 2020					
	Background	Magnesium	Aluminum	Aluminum+Fe			
Window 1	1572.2	7510.8	2837.3	2643.1		cps	
Window 2	1446.2	6523.9	2552.8	2409.9		cps	
Window 3	1060.9	3611.4	1731.5	1684.8		cps	
Window 4	145.5	363.4	363.2	368.1		cps	
Long Space	0.0	5077.7	1106.6	963.7		cps	
Short Space	3.1	1709.3	1103.4	916.9		cps	
Rho		1.7100	2.5900	0.0000		g/cc	
Pe		2.0000	2.7500	5.7900			
Rib Angle	: 44.0	Rib Slope	: 0.965	Density/Spine Ratio		: 0.555	
Spine Angle	: 74.0	Spine Slope	: 3.481	Spine Intercept		: -17.4	

Before Survey Verification		Performed Wed Dec 31 18:00:00 1969					
	Background	Magnesium	Aluminum	Aluminum+Fe			
Window 1	0.0	0.0	0.0	0.0		cps	
Window 2	0.0	0.0	0.0	0.0		cps	
Window 3	0.0	0.0	0.0	0.0		cps	
Window 4	0.0	0.0	0.0	0.0		cps	
Long Space	0.0	0.0	0.0	0.0		cps	
Short Space	0.0	0.0	0.0	0.0		cps	
Measured Rho		0.0000	0.0000	0.0000		g/cc	
Measured Correction		0.0000	0.0000	0.0000		g/cc	
Measured Pe			0.0000	0.0000			

After Survey Verification		Performed Wed Dec 31 18:00:00 1969					
	Background	Magnesium	Aluminum	Aluminum+Fe			
Window 1	0.0	0.0	0.0	0.0		cps	

Window 1	0.0	0.0	0.0	0.0	cps
Window 2	0.0	0.0	0.0	0.0	cps
Window 3	0.0	0.0	0.0	0.0	cps
Window 4	0.0	0.0	0.0	0.0	cps
Long Space	0.0	0.0	0.0	0.0	cps
Short Space	0.0	0.0	0.0	0.0	cps
Measured Rho		0.0000	0.0000	0.0000	g/cc
Measured Correction		0.0000	0.0000	0.0000	g/cc
Measured Pe			0.0000	0.0000	

Compensated Neutron Calibration Report

Serial Number: 6I
Tool Model: G

CALIBRATION

Detector	Readings	Target	Normalization
Short Space	1.00 cps	1.00 cps	1.0000
Long Space	1.00 cps	1.00 cps	1.0000

PRE-SURVEY VERIFICATION

	Detector	Readings	Measured	Target
1)	Short Space	cps		
	Long Space	cps	pu	pu
2)	Short Space	cps		
	Long Space	cps	pu	
3)	Short Space	cps		
	Long Space	cps	pu	

POST-SURVEY VERIFICATION

	Detector	Readings	Measured	Target
1)	Short Space	cps		
	Long Space	cps	pu	pu
2)	Short Space	cps		
	Long Space	cps	pu	pu
3)	Short Space	cps		
	Long Space	cps	pu	pu

Gamma Ray Calibration Report

Serial Number: GR6
Tool Model: OPEN
Performed: Thu Jul 30 20:04:35 2020

Calibrator Value: 150.0 GAPI

Background Reading: 0.0 cps
Calibrator Reading: 276.0 cps

Sensitivity: 0.7500 GAPI/cps