

MICRO LOG



Company FOURWINDS OIL CORP.
 Well GW UNIT #1
 Field UNNAMED
 County NORTON
 State KANSAS

Company FOURWINDS OIL CORP.
 Well GW UNIT #1
 Field UNNAMED
 County NORTON State KANSAS

Location: API #: 15-137-20757-0000
 660' FNL & 2440' FWL
 SEC 28 TWP 5S RGE 21W
 Permanent Datum GROUND LEVEL Elevation 2236
 Log Measured From KELLY BUSHING 8' A.G.L.
 Drilling Measured From KELLY BUSHING
 Other Services CDL/CNL DIL
 Elevation K.B. 2244 D.F. 2242 G.L. 2236

Date	10/01/20
Run Number	TWO
Depth Driller	3740
Depth Logger	3737
Bottom Logged Interval	3735
Top Log Interval	3050
Casing Driller	8 5/8" @ 222
Casing Logger	222
Bit Size	7 7/8"
Type Fluid in Hole	CHEMICAL MUD
Density / Viscosity	9.2/58
pH / Fluid Loss	10.0/8.8
Source of Sample	FLOWLINE
Rm @ Meas. Temp	2.0 @ 72F
Rmf @ Meas. Temp	1.5 @ 72F
Rmc @ Meas. Temp	2.4 @ 72F
Source of Rmf / Rmc	MEASURED
Rm @ BHT	1.26 @ 114F
Time Circulation Stopped	2 HOURS
Time Logger on Bottom	////
Maximum Recorded Temperature	114F
Equipment Number	1523
Location	HAYS, KANSAS
Recorded By	GUS PFANENSTIEL
Witnessed By	JEFF LAWLER

<<< Fold Here >>>

All interpretations are opinions based on inferences from electrical or other measurements and we cannot and do not guarantee the accuracy or correctness of any interpretation, and we shall not, except in the case of gross or willful negligence on our part, be liable or responsible for any loss, costs, damages, or expenses incurred or sustained by anyone resulting from any interpretation made by any of our officers, agents or employees. These interpretations are also subject to our general terms and conditions set out in our current Price Schedule.

Comments

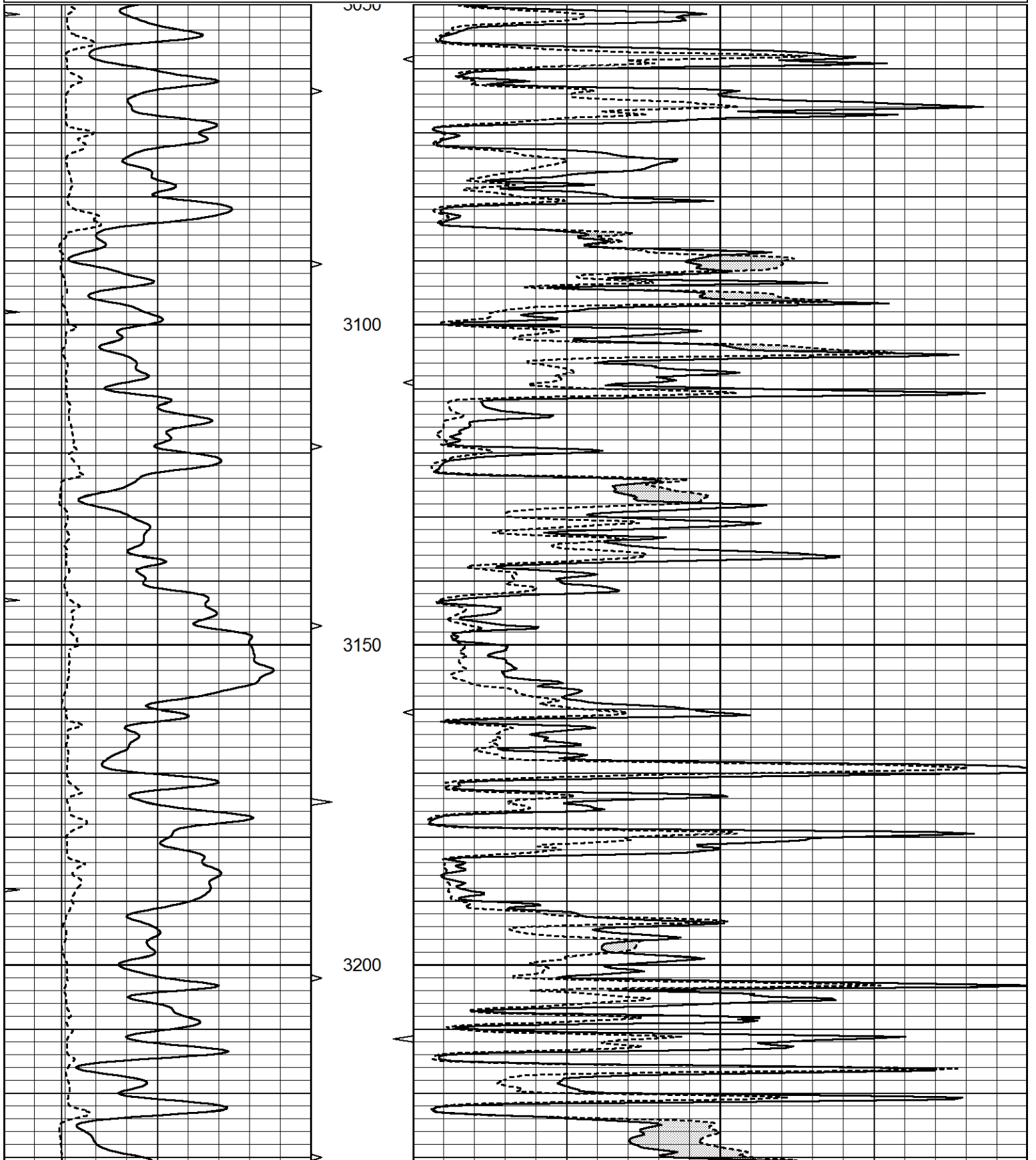
THANK YOU FOR USING ELI WIRELINE, HAYS, KS. (785) 628-6395
 DIRECTIONS: 4 WEST OF LOGAN TO RD E 12, SOUTH TO RD Z.
 WEST TO RD E 11, 3 SOUTH, WEST INTO.

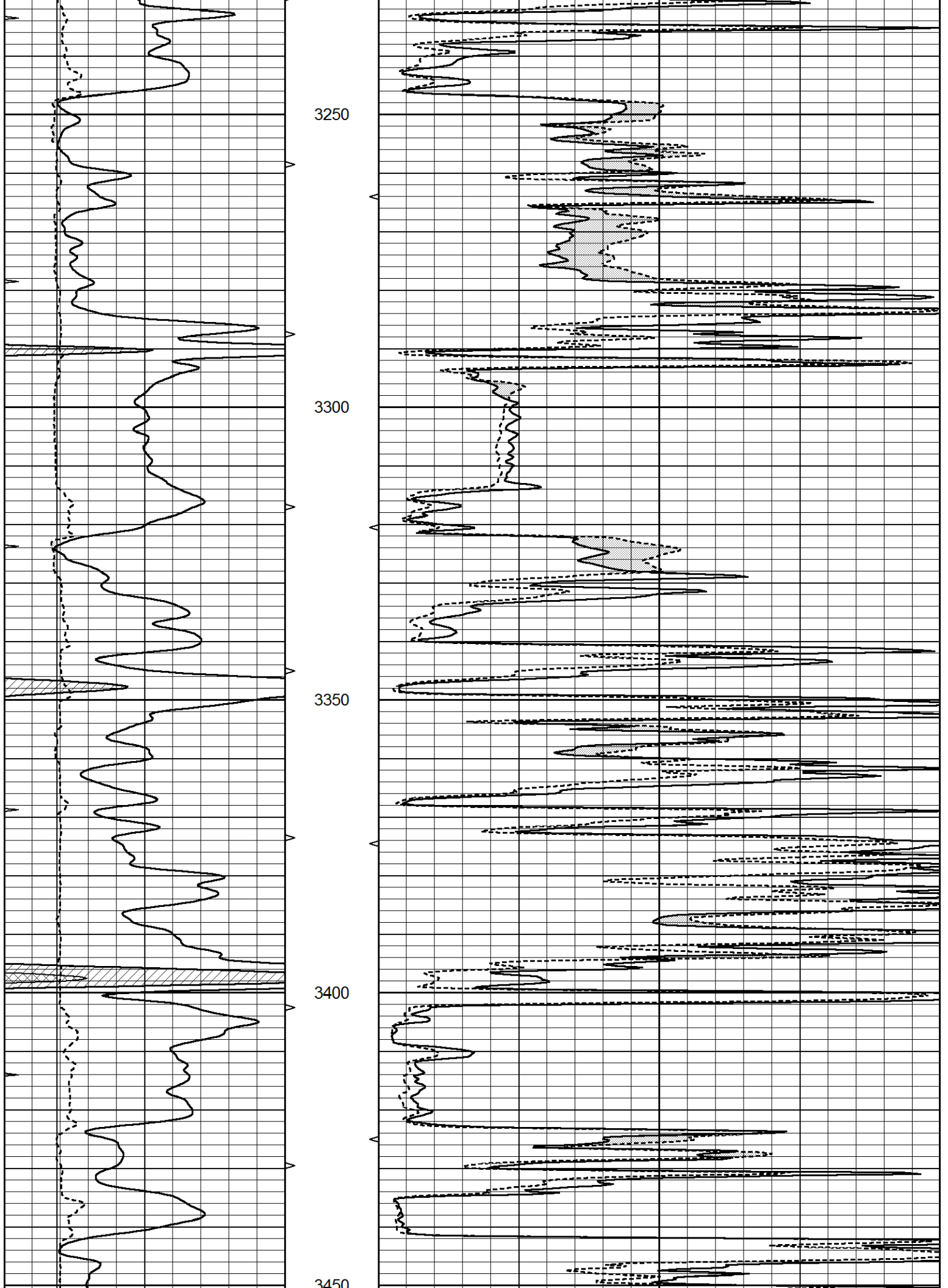


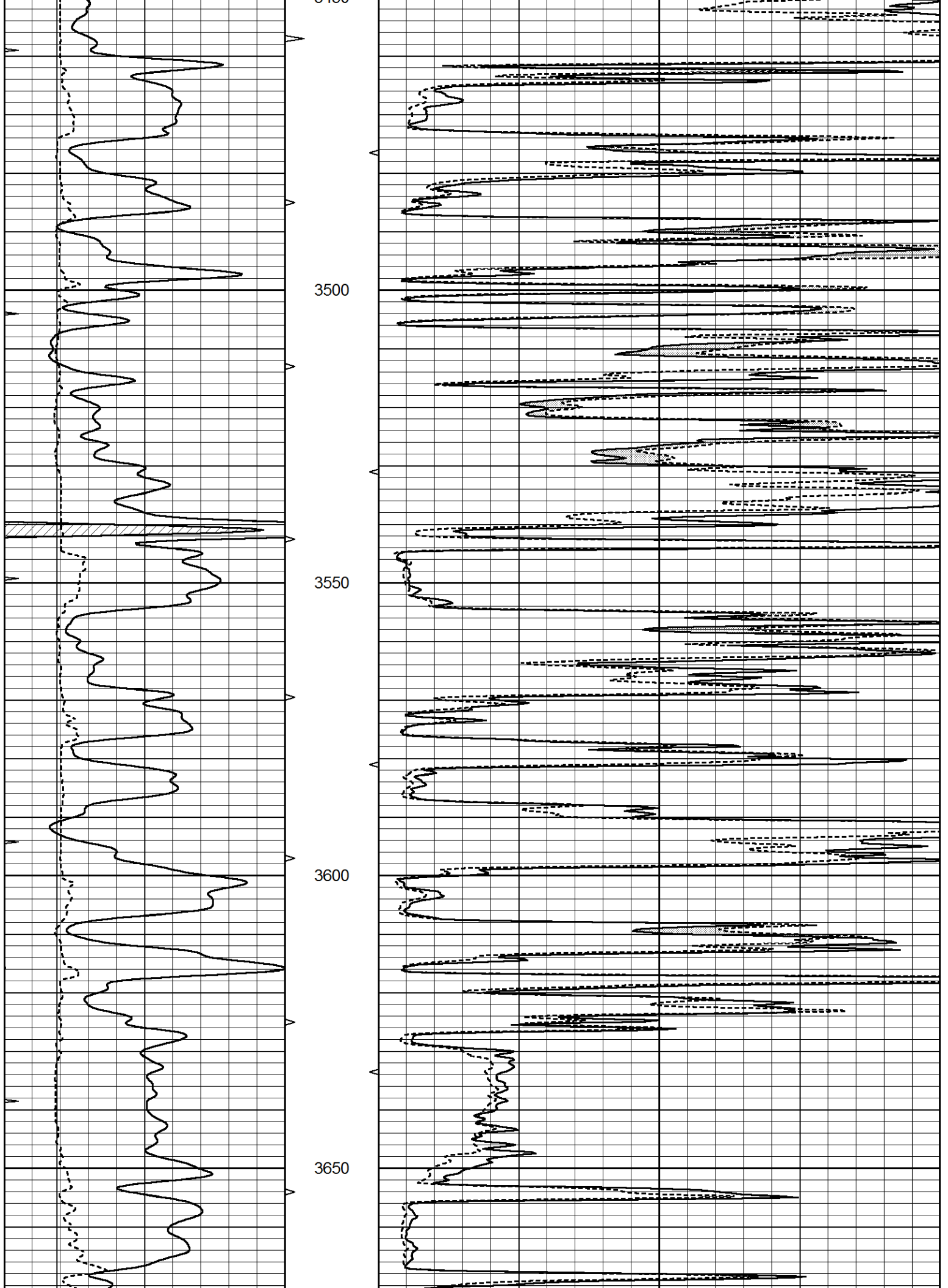
MAIN PASS

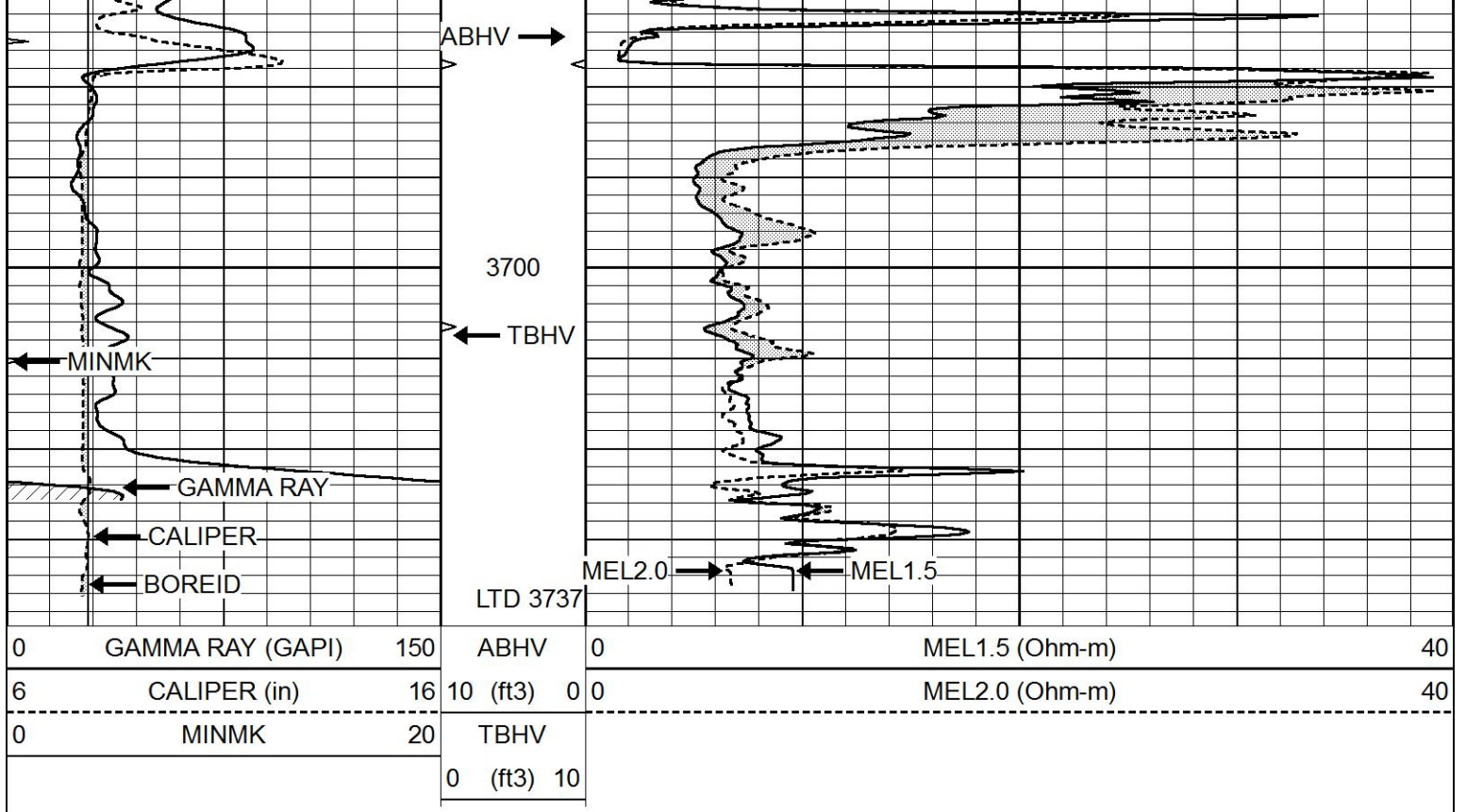
Database File 5029ddn.db
 Dataset Pathname pass6.1
 Presentation Format _micro
 Dataset Creation Thu Oct 01 15:11:15 2020
 Charted by Depth in Feet scaled 1:240

0	GAMMA RAY (GAPI)	150	ABHV	0	MEL1.5 (Ohm-m)	40
6	CALIPER (in)	16	10 (ft3)	0	MEL2.0 (Ohm-m)	40
0	MINMK	20	TBHV			
			0 (ft3)	10		





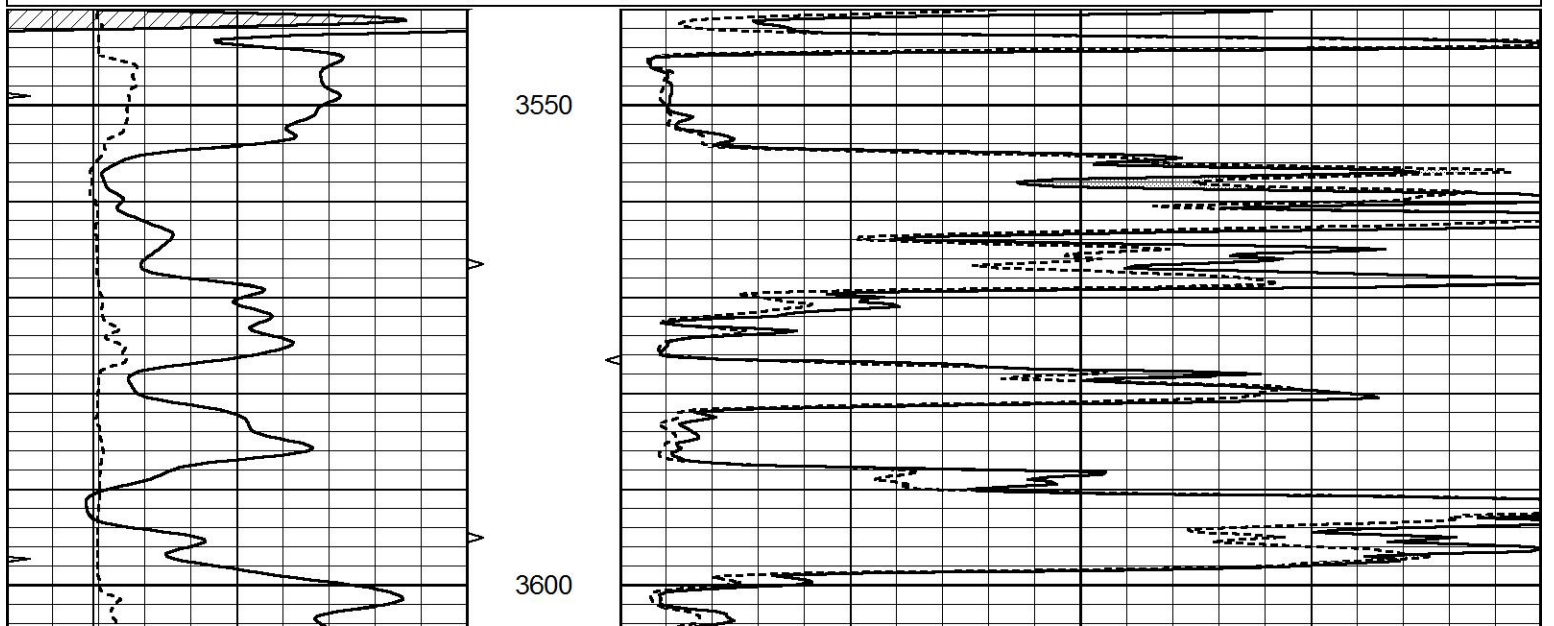


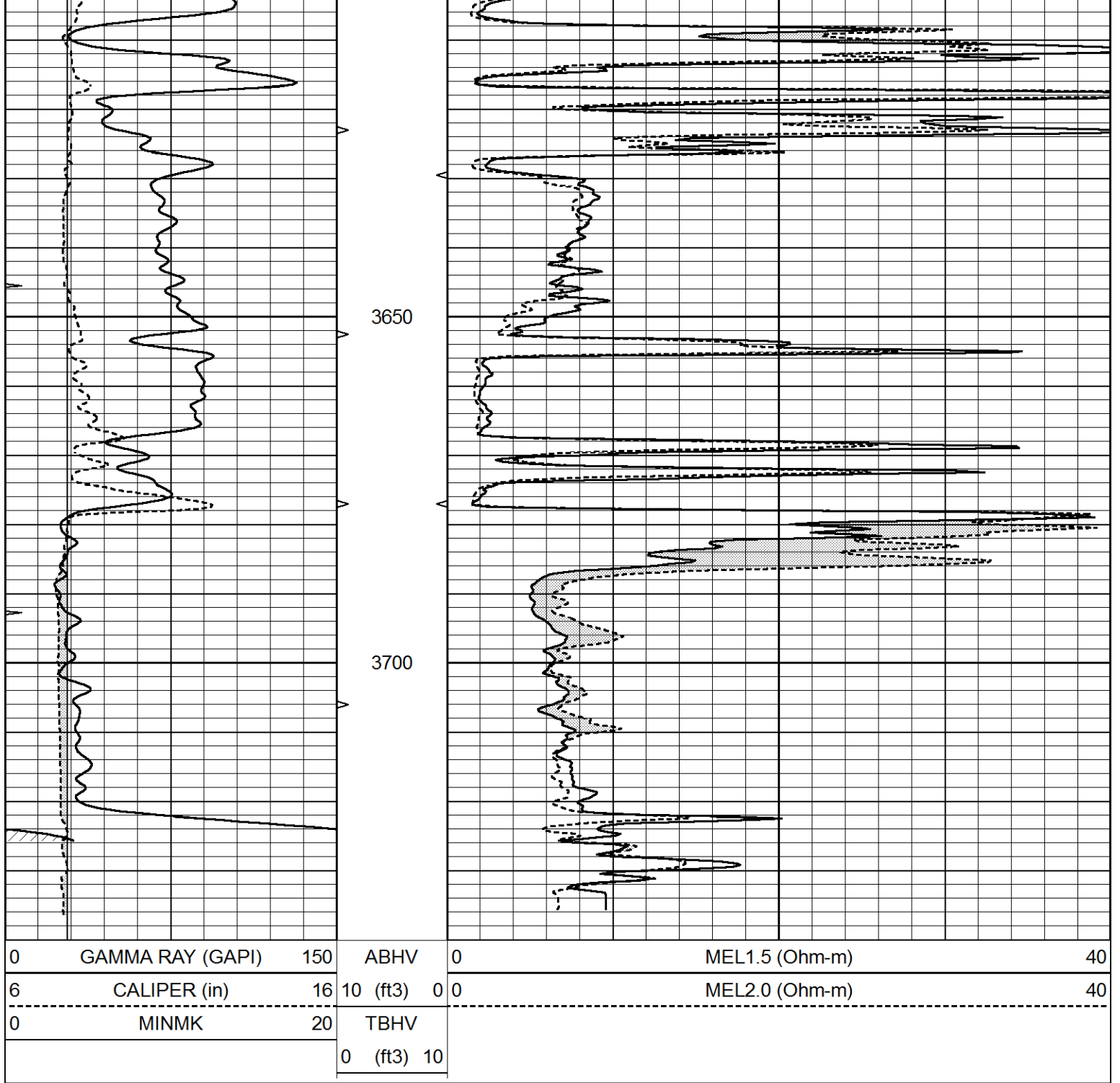


REPEAT SECTION

Database File 5029ddn.db
 Dataset Pathname pass5.1
 Presentation Format _micro
 Dataset Creation Thu Oct 01 15:00:48 2020
 Charted by Depth in Feet scaled 1:240

0	GAMMA RAY (GAPI)	150	ABHV	0	MEL1.5 (Ohm-m)	40
6	CALIPER (in)	16	10 (ft3)	0 0	MEL2.0 (Ohm-m)	40
0	MINMK	20	TBHV			
			0 (ft3)	10		





Calibration Report

Database File 5029ddn.db
 Dataset Pathname pass5.1
 Dataset Creation Thu Oct 01 15:00:48 2020

MICRO Calibration Report

Serial Number: Micro1
 Tool Model: Probel
 Performed: Thu Apr 02 16:23:04 2020

Caliper Calibration: Gain=3.980 Offset=5.001

References	Low Cal	High Cal
Readings	9.500	13.000
	0.308	2.032

1.5" Calibration: Gain=28.134 Offset= 1.000

1.5" Calibration:

Gain=20.154

Offset=-1.000

References
Readings

Low Cal
0.000
0.004

High Cal
20.000
0.832

2" Calibration:

Gain=30.000

Offset=-0.800

References
Readings

Low Cal
0.000
0.022

High Cal
20.000
0.793

Gamma Ray Calibration Report

Serial Number:
Tool Model:
Performed:

GR5
OPEN
Thu Jul 30 23:16:16 2020

Calibrator Value:

1.0 GAPI

Background Reading:
Calibrator Reading:

0.0 cps
1.0 cps

Sensitivity:

0.7200 GAPI/cps