



**MICRO  
RESISTIVITY  
LOG**

Company Palomino Petroleum  
Well 18-3 #1  
Field Revילו  
County Trego  
State Kansas

Company Palomino Petroleum  
Well 18-3 #1  
Field Revילו  
County Trego State Kansas

Location: API #: 15 195 23059  
2281' FNL & 1802' FWL  
SEC 18 TWP 15S RGE 25W  
Permanent Datum Ground Level Elevation 2399'  
Log Measured From KB 8' AGL  
Drilling Measured From KB  
Other Services  
CDNL  
BCS  
DIL  
Elevation  
K.B. 2407'  
D.F. 2406'  
G.L. 2399'

Date	7-5-18
Run Number	Two
Depth Driller	4440'
Depth Logger	4438'
Bottom Logged Interval	4416'
Top Log Interval	3500'
Casing Driller	8 5/8" @ 219'
Casing Logger	219'
Bit Size	7 7/8"
Type Fluid in Hole	Chemical
Density / Viscosity	9.0/57
PH / Fluid Loss	10.5/6.4
Source of Sample	Pit
Rm @ Meas. Temp	1.6@88degf
Rmf @ Meas. Temp	1.28@88degf
Rmc @ Meas. Temp	2.05@88degf
Source of Rmf / Rmc	Calculated
Rm @ BHT	1.17@120degf
Time Circulation Stopped	7:15 p.m
Time Logger on Bottom	11:25 p.m
Maximum Recorded Temperature	120degf
Equipment Number	T127
Location	Hays, KS
Recorded By	C.Patterson
Witnessed By	Mr. Jerry A. Smith

<<< Fold Here >>>

All interpretations are opinions based on inferences from electrical or other measurements and we cannot and do not guarantee the accuracy or correctness of any interpretation, and we shall not, except in the case of gross or willful negligence on our part, be liable or responsible for any loss, costs, damages, or expenses incurred or sustained by anyone resulting from any interpretation made by any of our officers, agents or employees. These interpretations are also subject to our general terms and conditions set out in our current Price Schedule.

**Comments**

East side of Utica to Rd. E, North 8 miles, East into. (By Palomino Tank Batteries)  
go East 1/4 mi, South into Location through cattle Guard

Thanks for using Gemini Wireline LLC  
785-625-1182

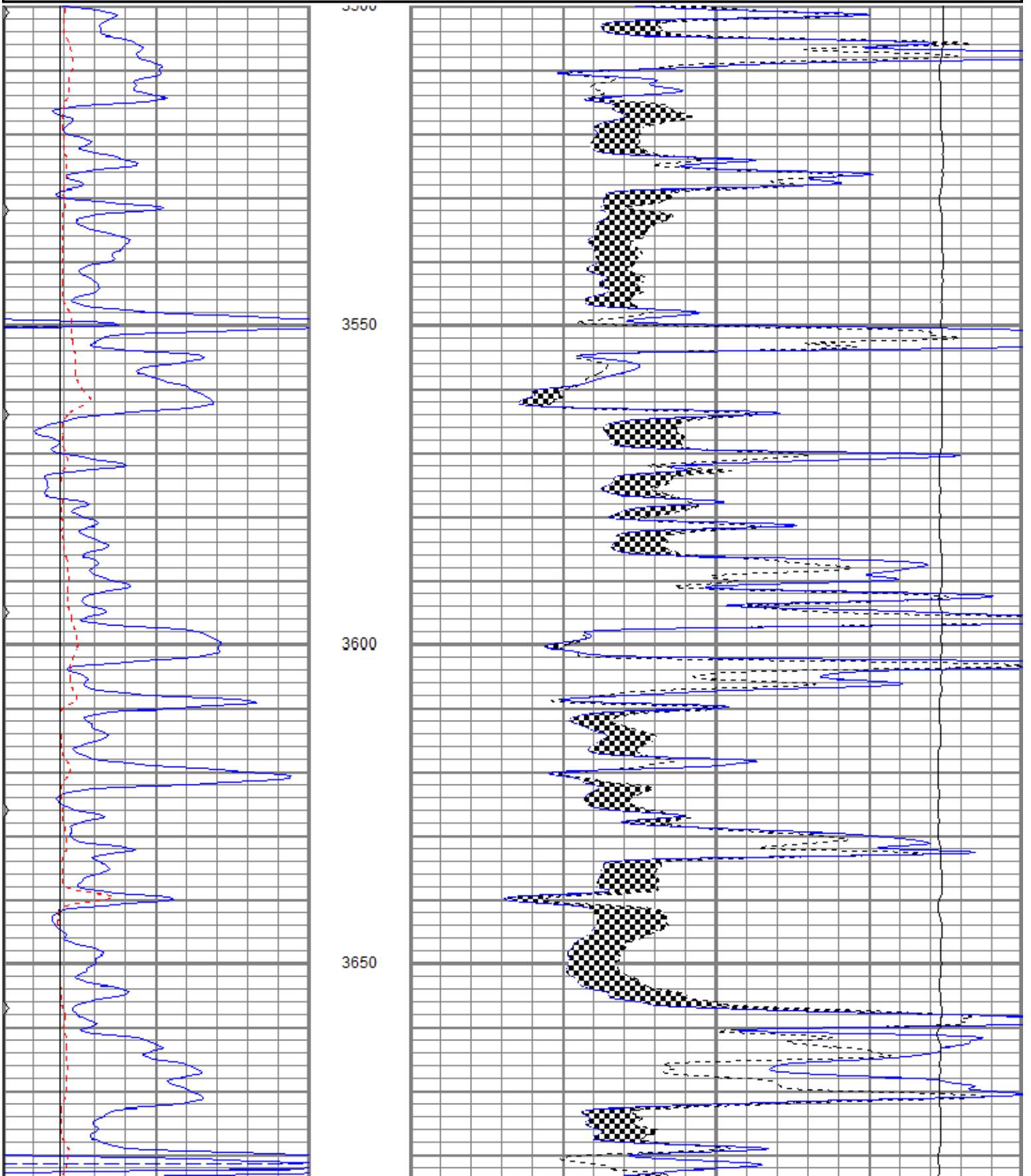


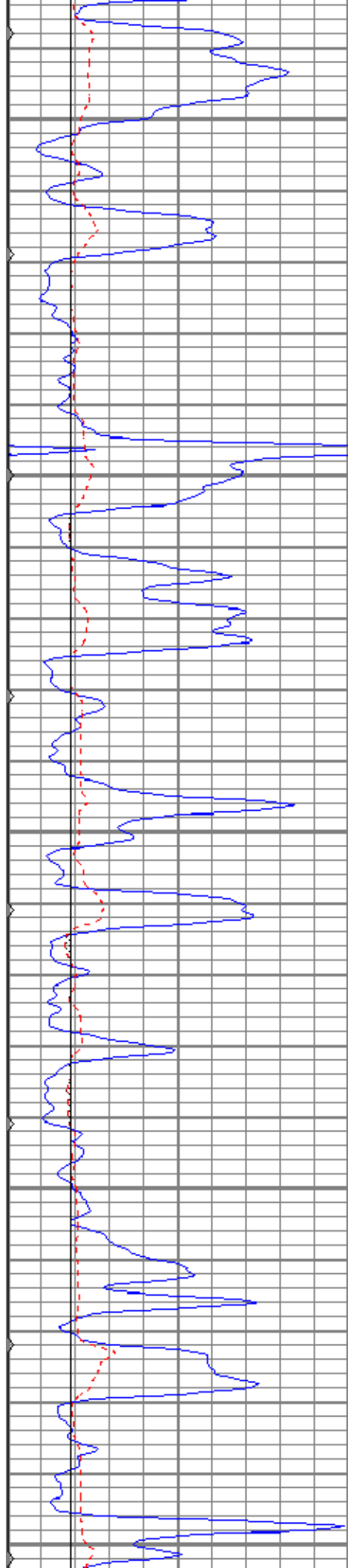
**MAIN PASS**

Database File pp18-3#1oh.db  
 Dataset Pathname pass4  
 Presentation Format kml  
 Dataset Creation Thu Jul 05 23:40:28 2018  
 Charted by Depth in Feet scaled 1:240

0	GR (GAPI)	150
6	MCAL (in)	16
6	BOREID (in)	16
0	MINMK	50

0	MN 2" (Ohm-m)	20
0	MI 1" (Ohm-m)	20
10000	LTEN (lb)	0





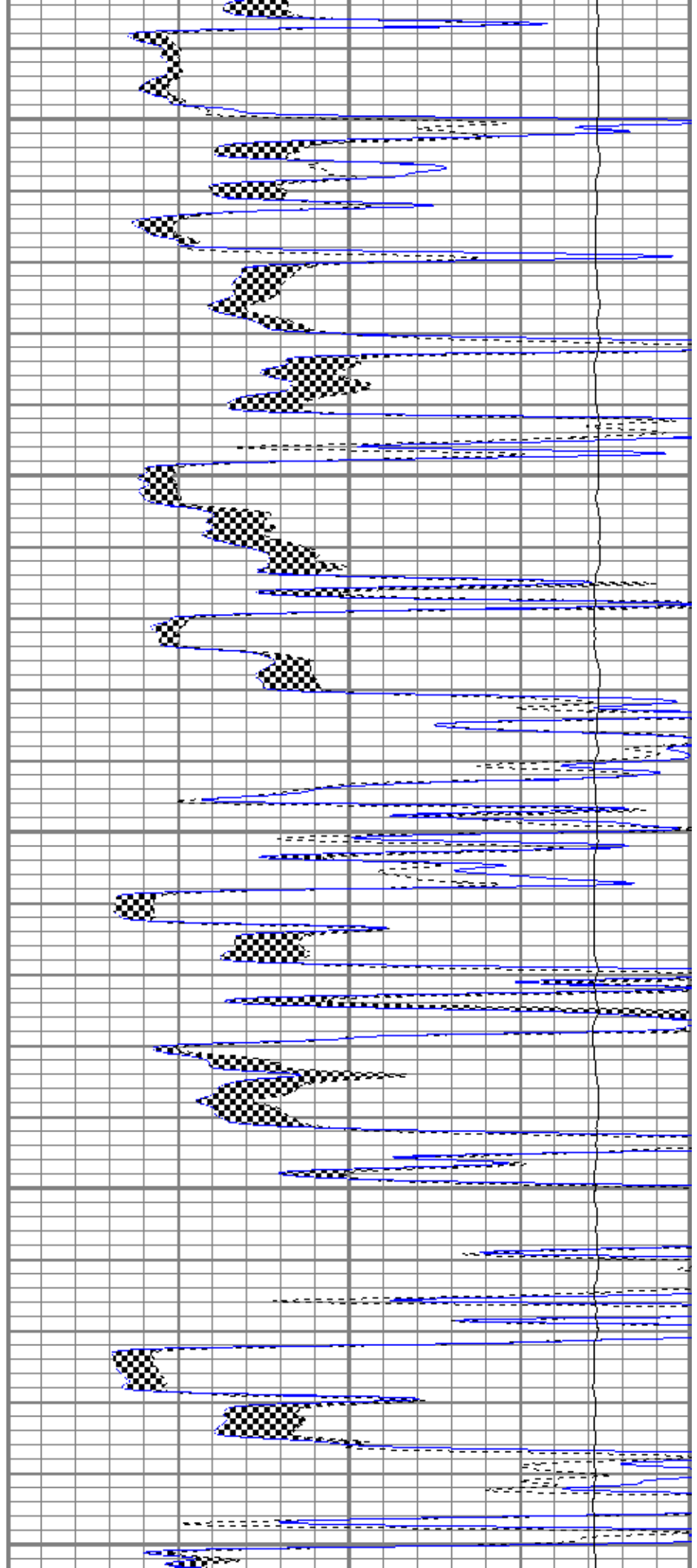
3700

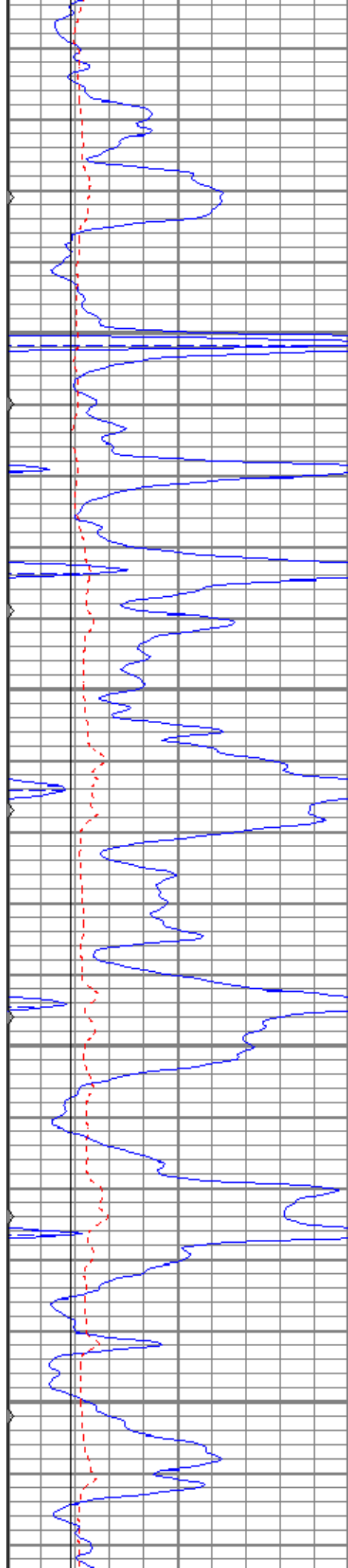
3750

3800

3850

3900



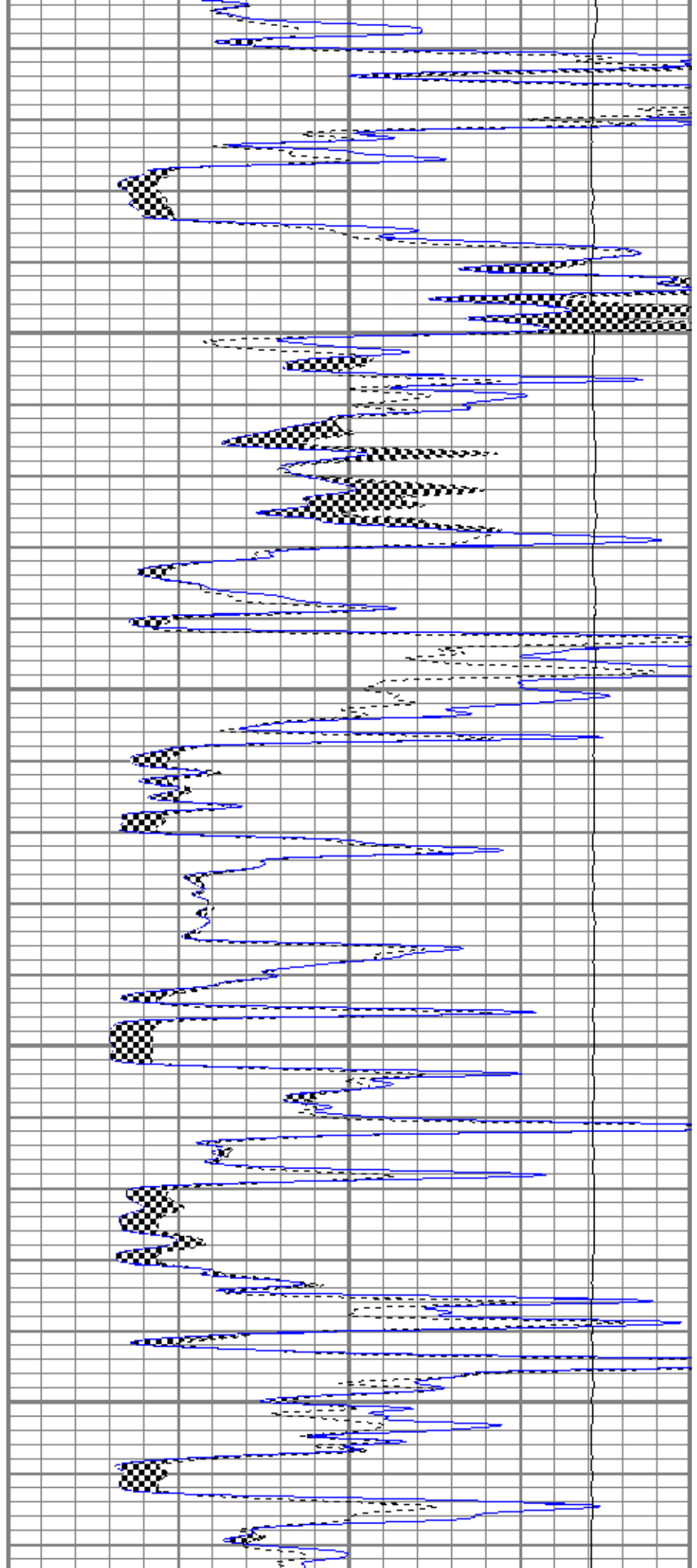


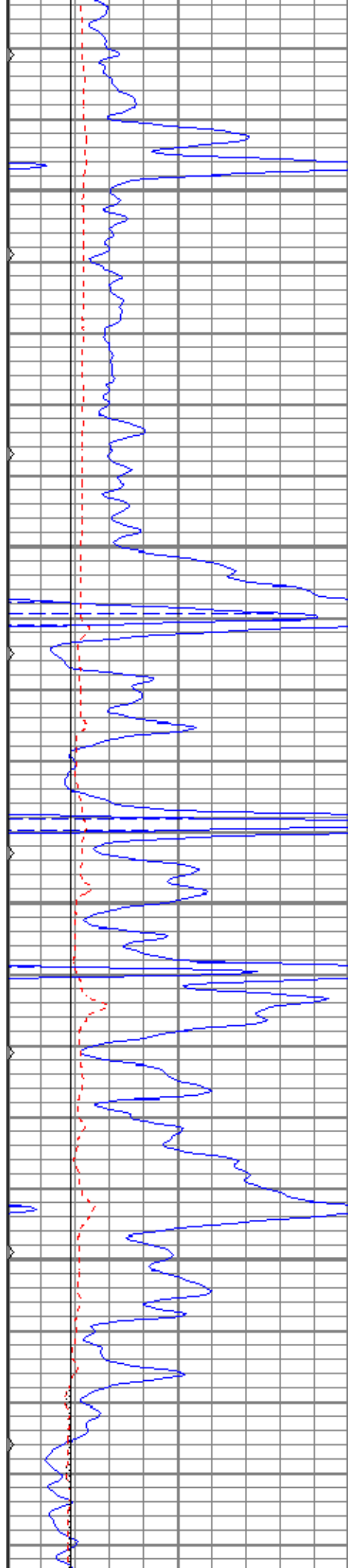
3950

4000

4050

4100



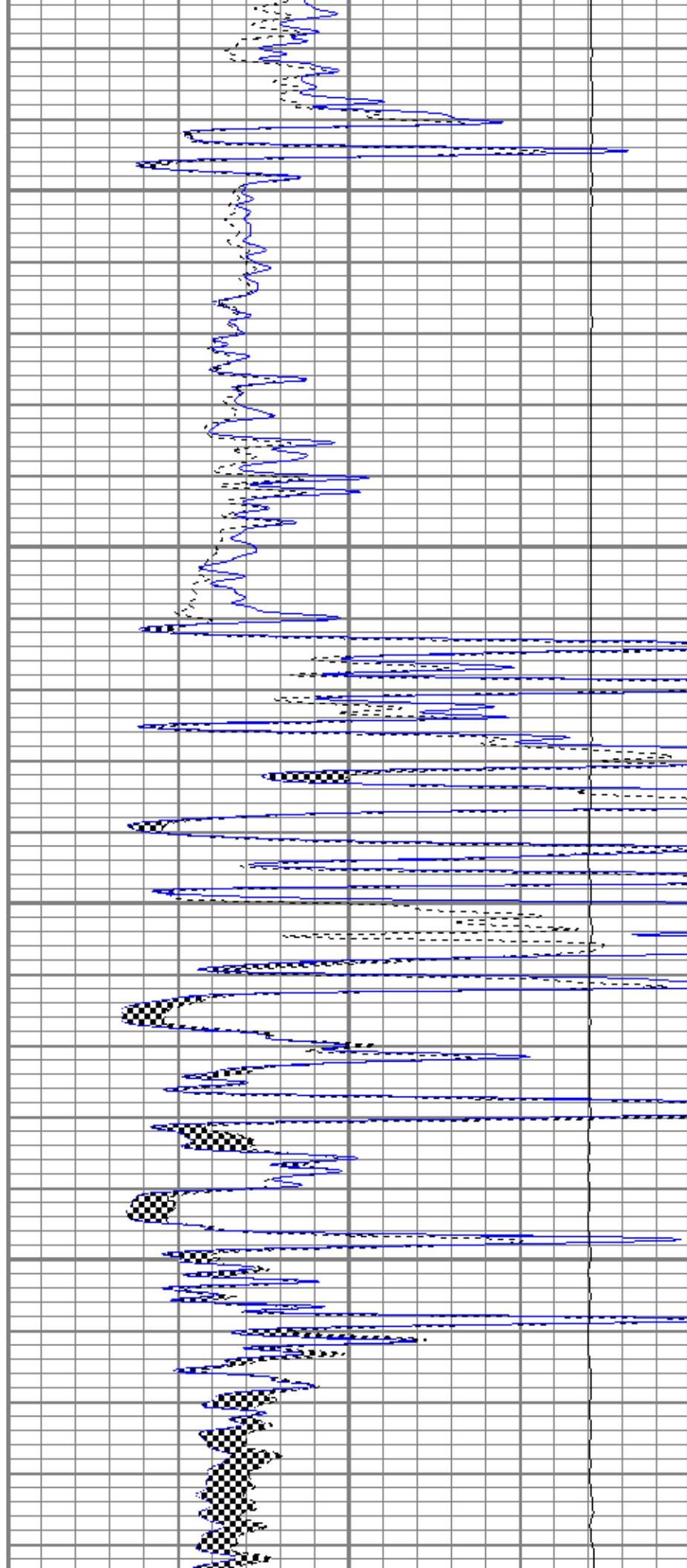


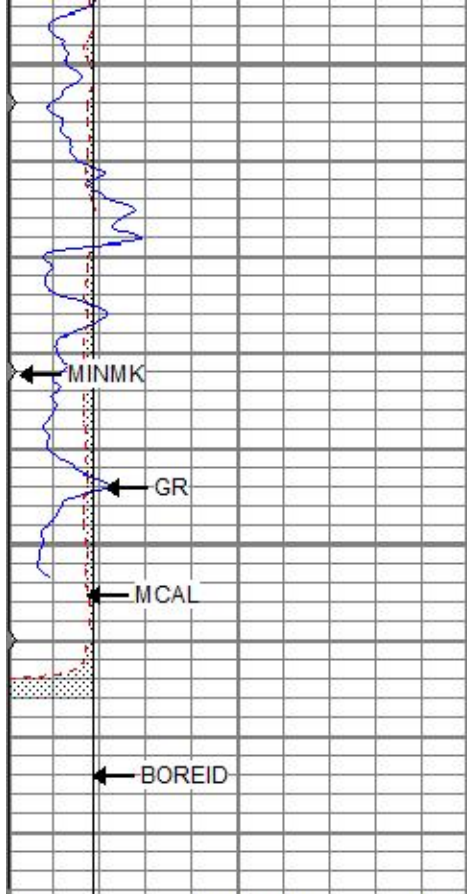
4150

4200

4250

4300

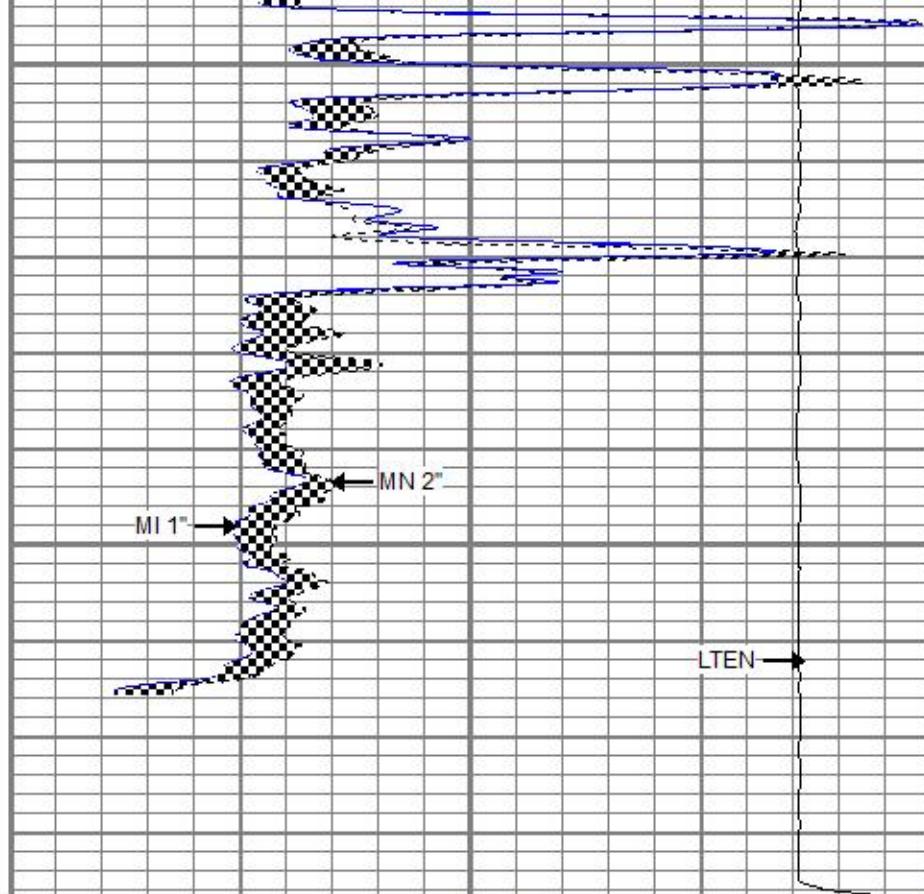




4350

4400

0	GR (GAPI)	150
6	MCAL (in)	16
6	BOREID (in)	16
0	MINMK	50



0	MN 2" (Ohm-m)	20
0	MI 1" (Ohm-m)	20
10000	LTEN (lb)	0

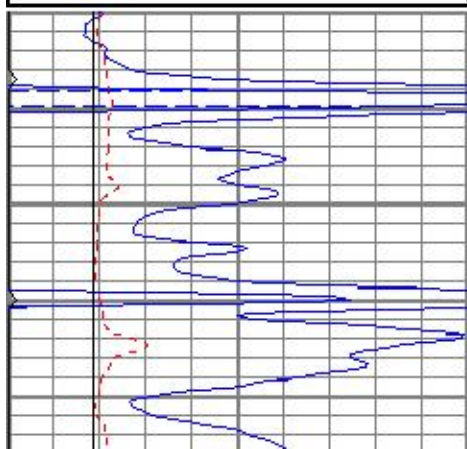


# REPEAT SECTION

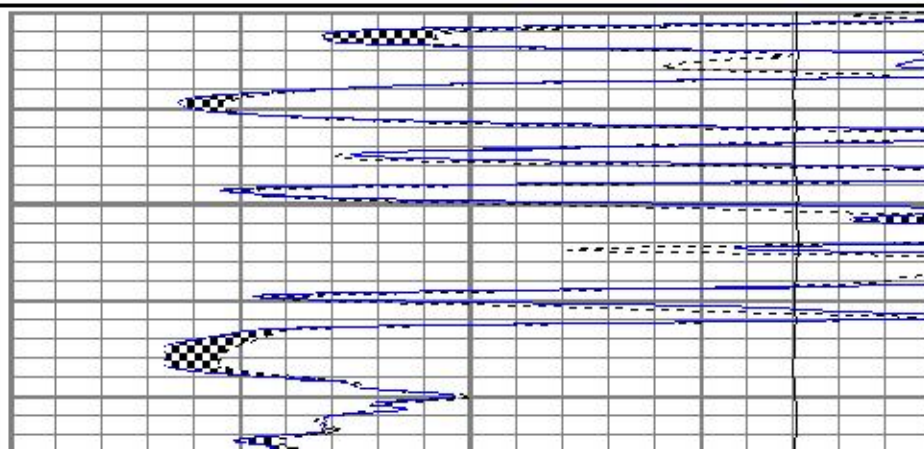
Database File pp18-3#1oh.db  
 Dataset Pathname pass3.1  
 Presentation Format kml  
 Dataset Creation Fri Jul 06 00:06:32 2018  
 Charted by Depth in Feet scaled 1:240

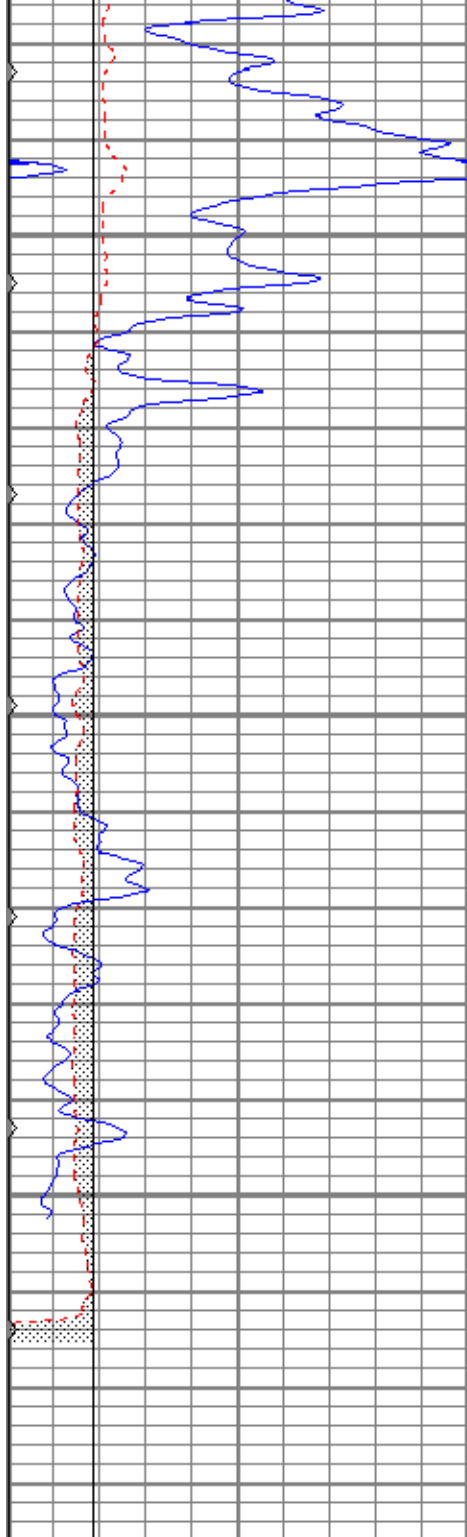
0	GR (GAPI)	150
6	MCAL (in)	16
6	BOREID (in)	16
0	MINMK	50

0	MN 2" (Ohm-m)	20
0	MI 1" (Ohm-m)	20
10000	LTEN (lb)	0



4250



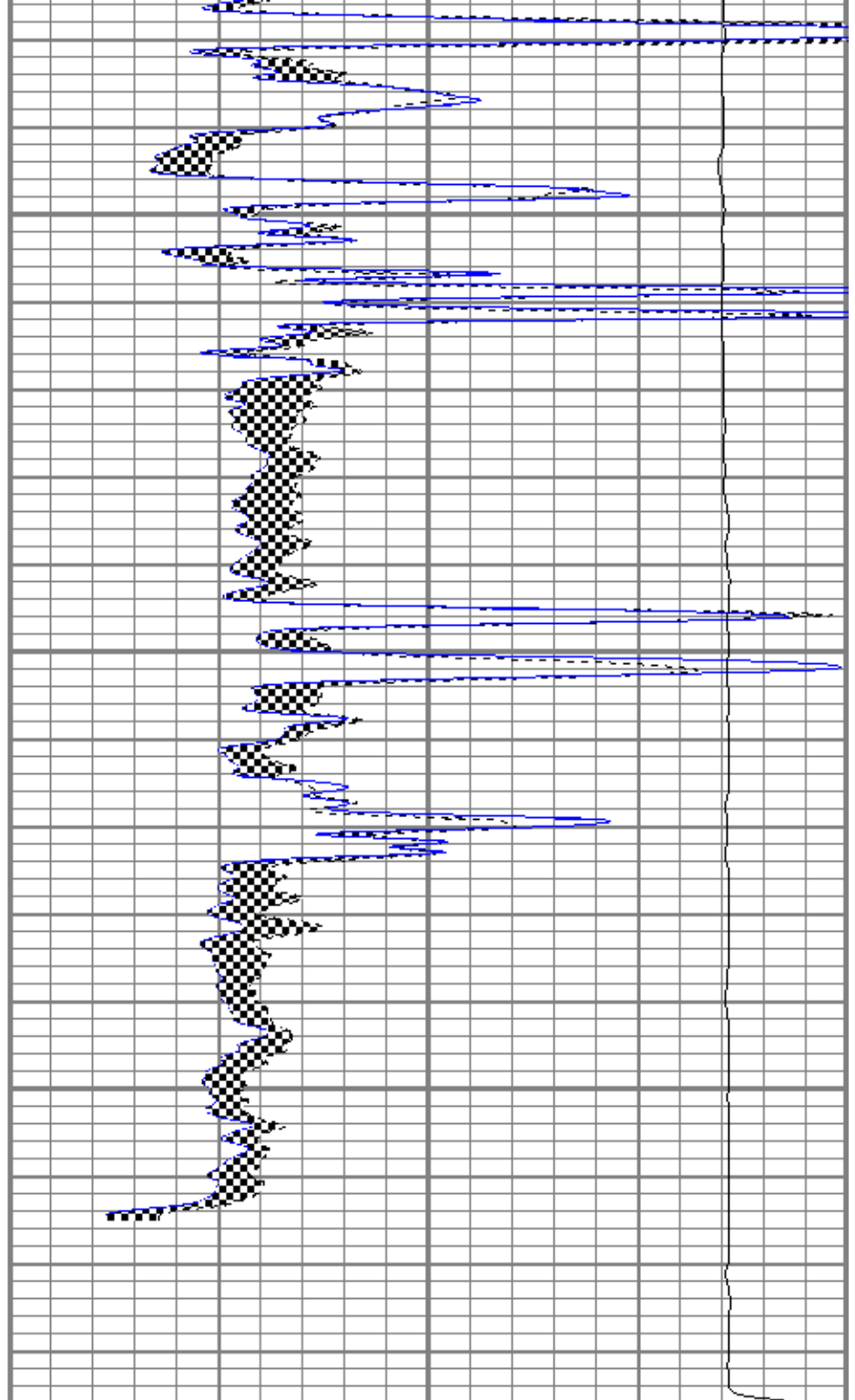


4300

4350

4400

0	GR (GAPI)	150
6	MCAL (in)	16
6	BOREID (in)	16
0	MINMK	50



0	MN 2" (Ohm-m)	20
0	MI 1" (Ohm-m)	20
10000	LTEN (lb)	0

Calibration Report

Database File pp18-3#1oh.db  
 Dataset Pathname pass4  
 Dataset Creation Thu Jul 05 23:40:28 2018

Microlog Calibration Report

Serial-Model: 9151-Gerhart  
 Performed: Thu Jul 05 23:21:07 2018

Readings

References

Results

	Zero	Cal		Zero	Cal		m	b
Normal	-0.2657	0.4803	V	0.0000	10.0000	Ohm-m	13.4055	3.5618
Inverse	-0.1847	0.6297	V	0.0000	10.0000	Ohm-m	12.2788	2.2684
Caliper	0.9710	1.9556	V	7.2000	13.5000	in	6.3984	0.9875

**Gamma Ray Calibration Report**

Serial Number: 2001  
 Tool Model: OH  
 Performed: Sun Nov 12 16:26:41 2017  
  
 Calibrator Value: 1.0 GAPI  
  
 Background Reading: 0.0 cps  
 Calibrator Reading: 1.0 cps  
  
 Sensitivity: 0.7000 GAPI/cps

Sensor	Offset (ft)	Schematic	Description	Length (ft)	O.D. (in)	Weight (lb)
GR	30.83		CHD-STD	0.50	1.69	1.00
			GR-OH (2001) 2001	3.56	3.25	40.00
MCAL	22.04		ML-Gerhart (9151) Gerhart Micro	9.46	4.00	125.00
MI	22.04					
MN	22.04					
WVF4	14.25		SLT-G (372) Sonic	15.71	3.50	250.00
WVF3	13.25					
WVF2	10.25					
WVF1	9.25		CENT-OHlong Open Hole long Centralizer	4.50	3.50	50.00
Dataset: pp18-3#1oh.db: field/well/run1/pass4 Total length: 33.73 ft Total weight: 466.00 lb O.D.: 4.00 in						