



**DUAL
INDUCTION
LOG**

Company	Palomino Petroleum	Company	Palomino Petroleum
Well	18-3 #1	Well	18-3 #1
Field	Revilo	Field	Revilo
County	Trego	County	Trego
State	Kansas	State	Kansas
Location:	2281' FNL & 1802' FWL		API #: 15 195 23059
Permanent Datum	SEC 18 TWP 15S RGE 25W	Ground Level	Elevation 2399'
Log Measured From	KB 8' AGL	Drilling Measured From	KB
Other Services	CDNL	Elevation	K.B. 2407'
	ML		D.F. 2406'
	BCS		G.L. 2399'

Date	7-5-18
Run Number	One
Depth Driller	4440'
Depth Logger	4438'
Bottom Logged Interval	4436'
Top Log Interval	210
Casing Driller	8 5/8" @ 219'
Casing Logger	219'
Bit Size	7 7/8"
Type Fluid in Hole	Chemical
Density / Viscosity	9.0/57
PH / Fluid Loss	10.5/6.4
Source of Sample	Pit
Rm @ Meas. Temp	1.6@88degf
Rmf @ Meas. Temp	1.28@88degf
Rmc @ Meas. Temp	2.05@88degf
Source of Rmf / Rmc	Calculated
Rm @ BHT	1.17@120degf
Time Circulation Stopped	7:15 p.m
Time Logger on Bottom	9:18 p.m
Maximum Recorded Temperature	120degf
Equipment Number	T127
Location	Hays, KS
Recorded By	C.Patterson
Witnessed By	Mr. Jerry A. Smith

<<< Fold Here >>>

All interpretations are opinions based on inferences from electrical or other measurements and we cannot and do not guarantee the accuracy or correctness of any interpretation, and we shall not, except in the case of gross or willful negligence on our part, be liable or responsible for any loss, costs, damages, or expenses incurred or sustained by anyone resulting from any interpretation made by any of our officers, agents or employees. These interpretations are also subject to our general terms and conditions set out in our current Price Schedule.

Comments

East side of Utica to Rd. E, North 8 miles, East into. (By Palomino Tank Batteries)
go East 1/4 mi, South into Location through cattle Guard

Thanks for using Gemini Wireline LLC
785-625-1182



MAIN PASS

Database File pp18-3#10h.db
 Dataset Pathname pass2.1
 Presentation Format kdillinn
 Dataset Creation Thu Jul 05 23:00:20 2018
 Charted by Depth in Feet scaled 1:600

0 GR (GAPI) 150

1000 CILD (mmho/m) 0

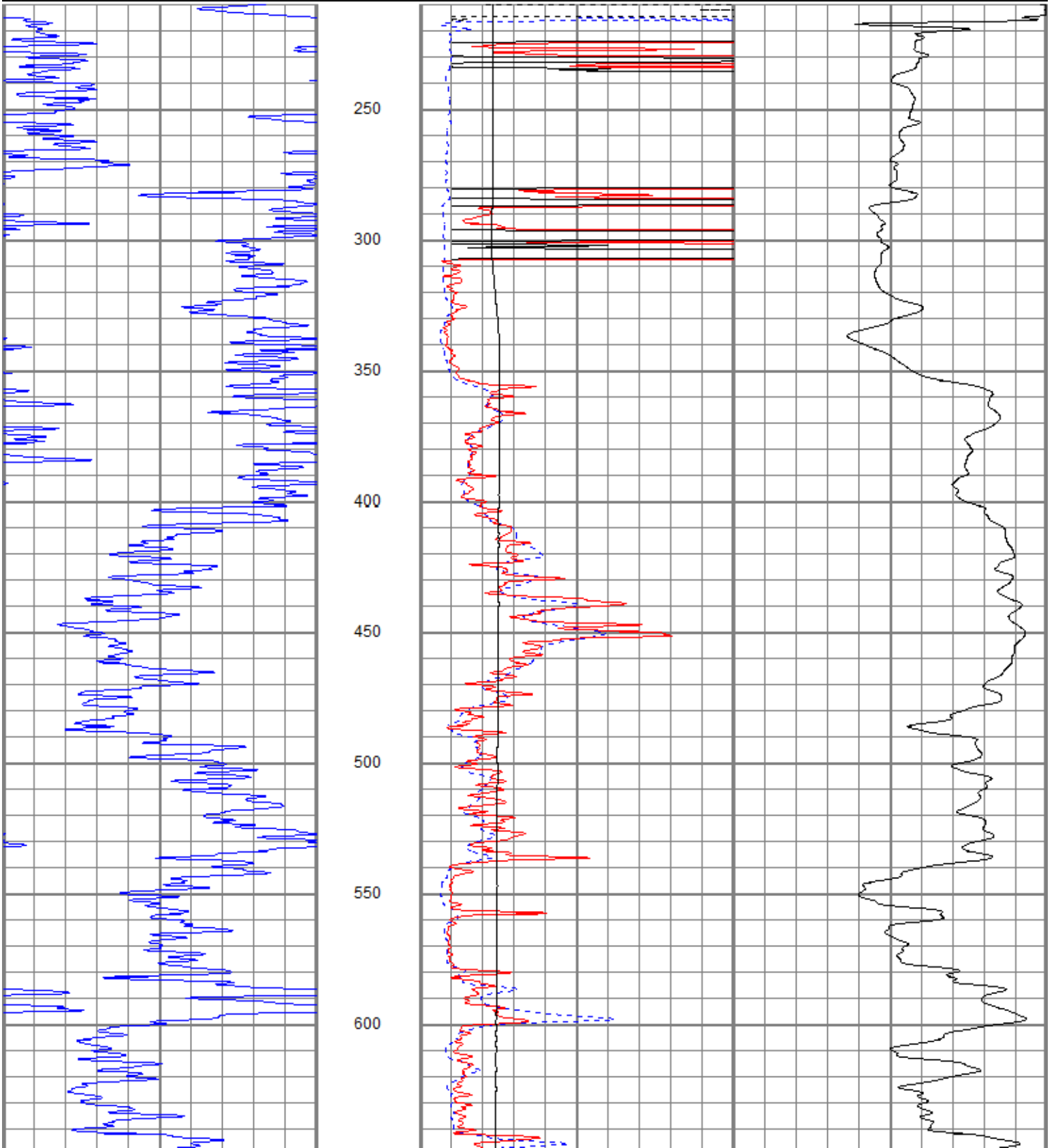
10000 LTEN (lb) 0

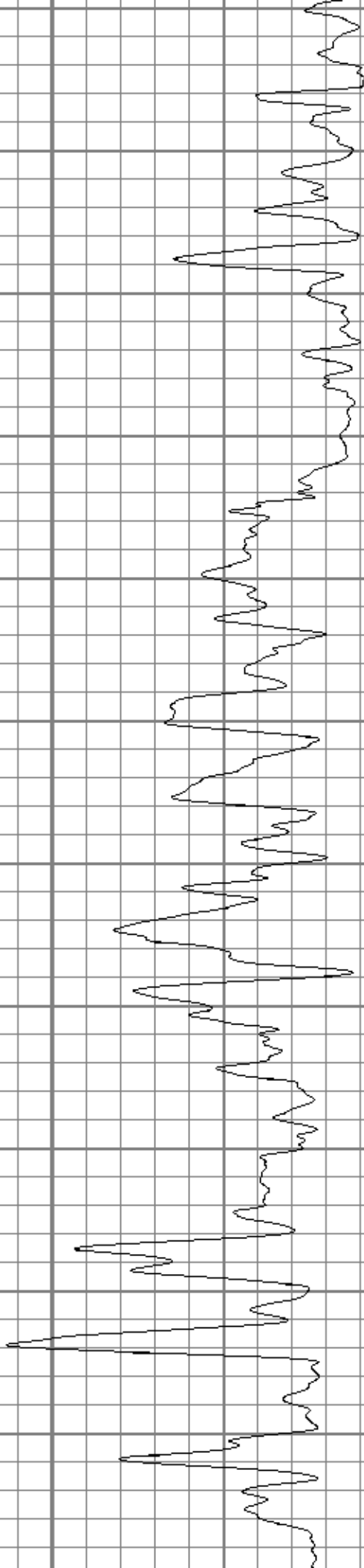
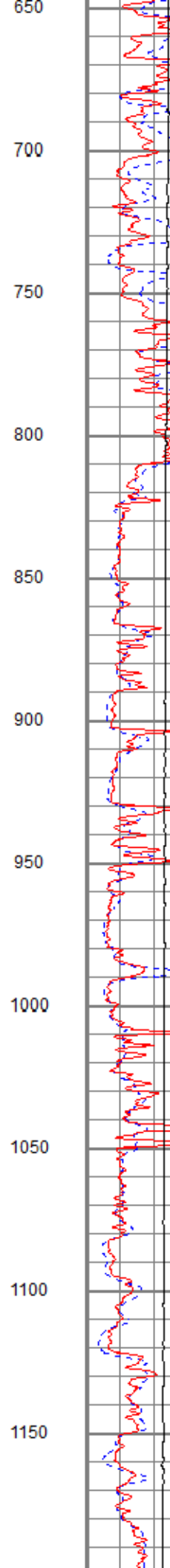
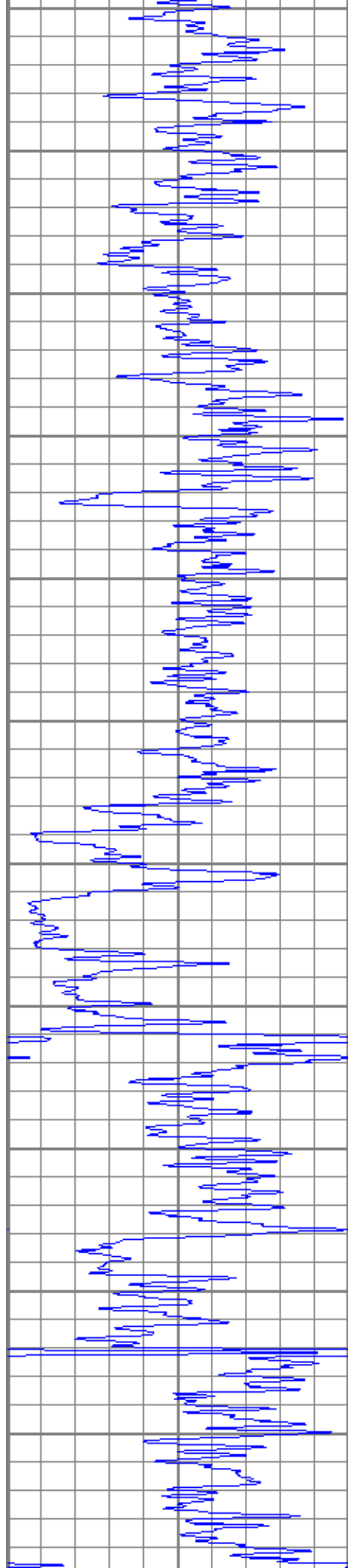
0 RILD (Ohm-m) 50

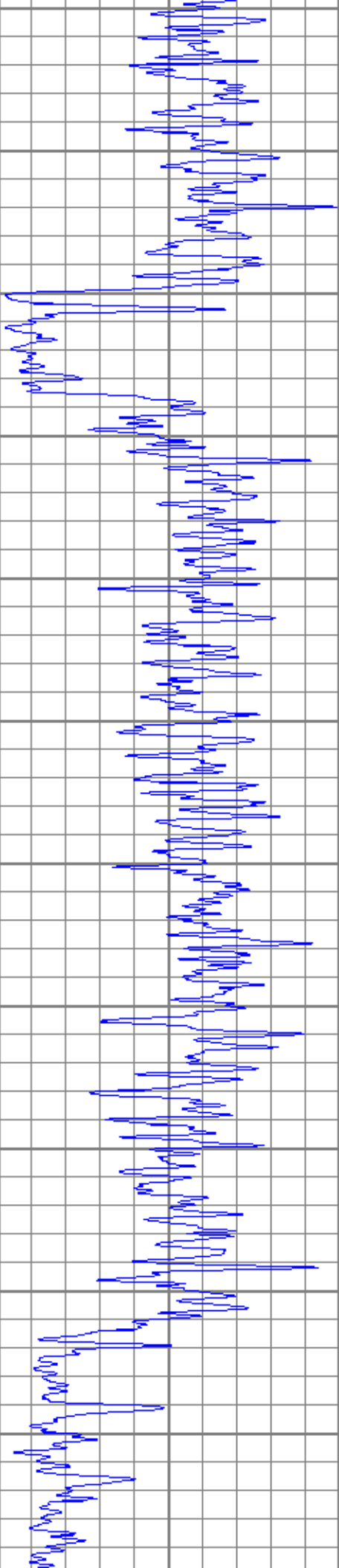
0 RLL3 (Ohm-m) 50

50 RILD x 10 (Ohm-m) 500

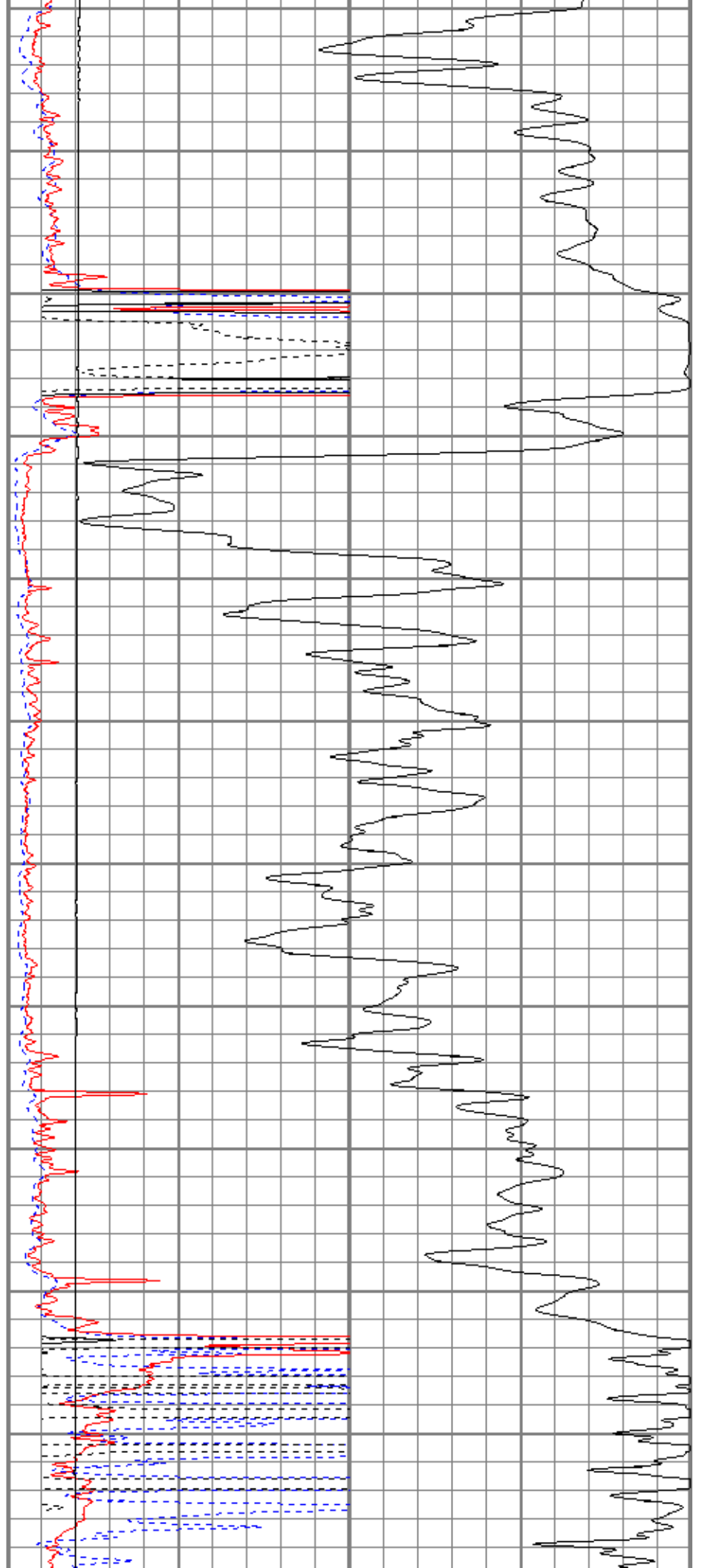
50 RLL3 x 10 (Ohm-m) 500

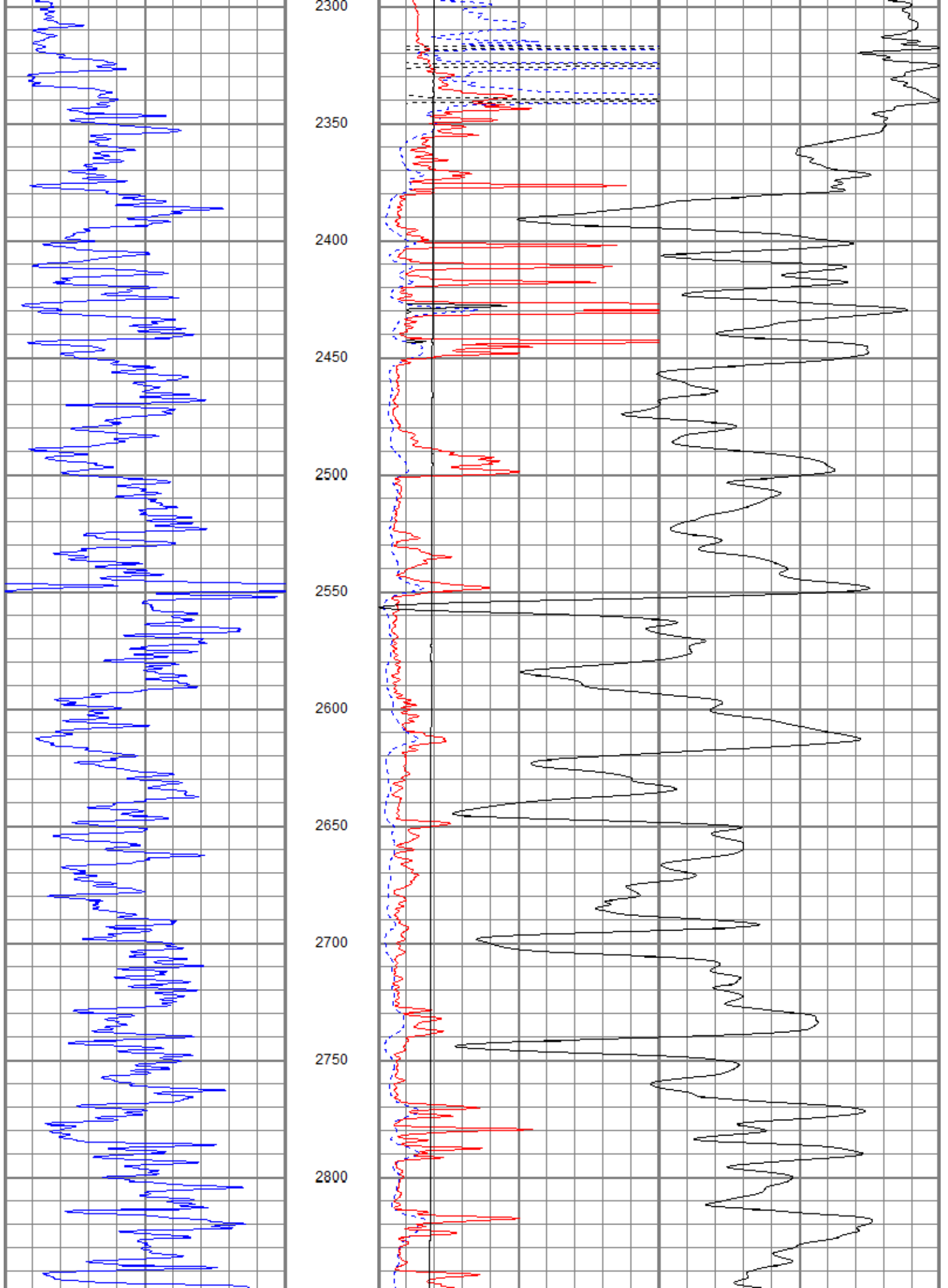


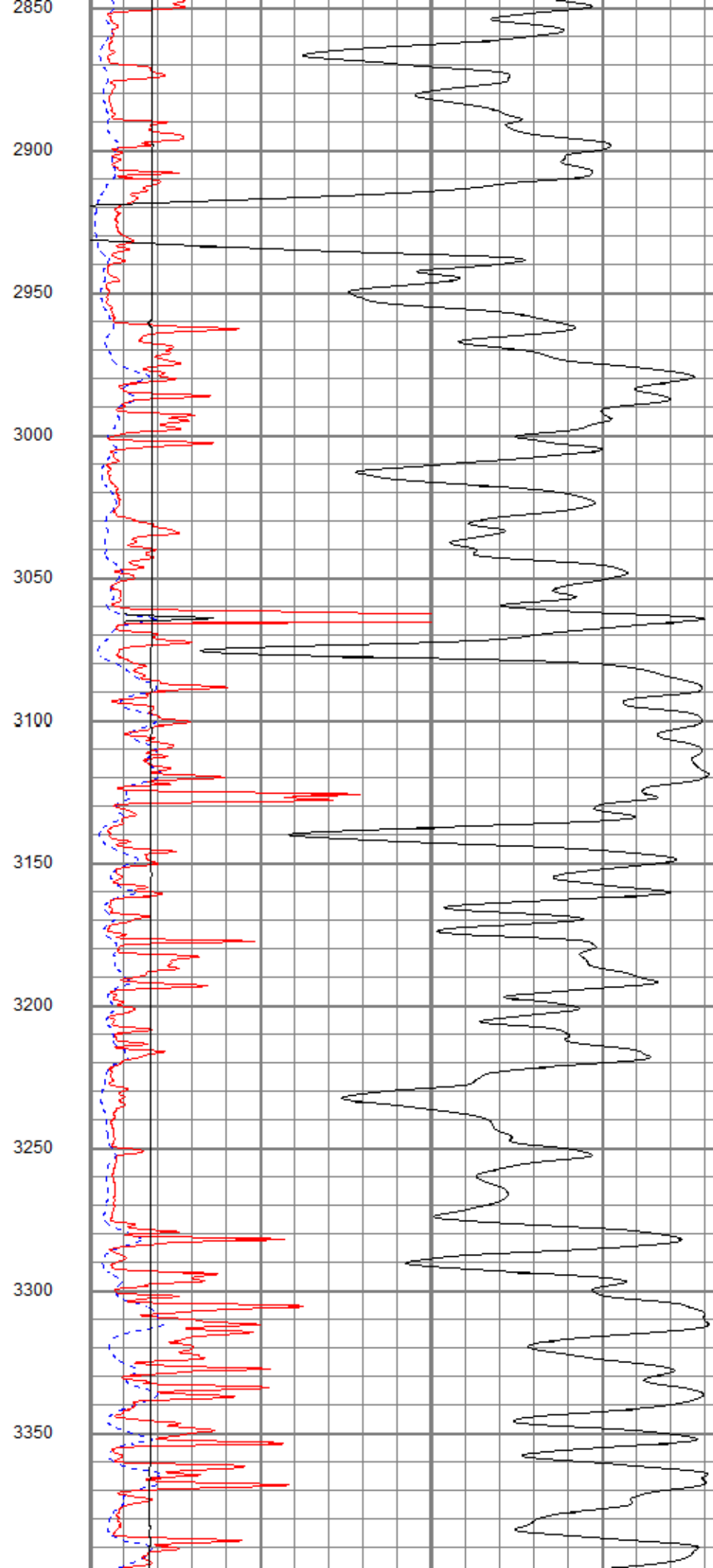
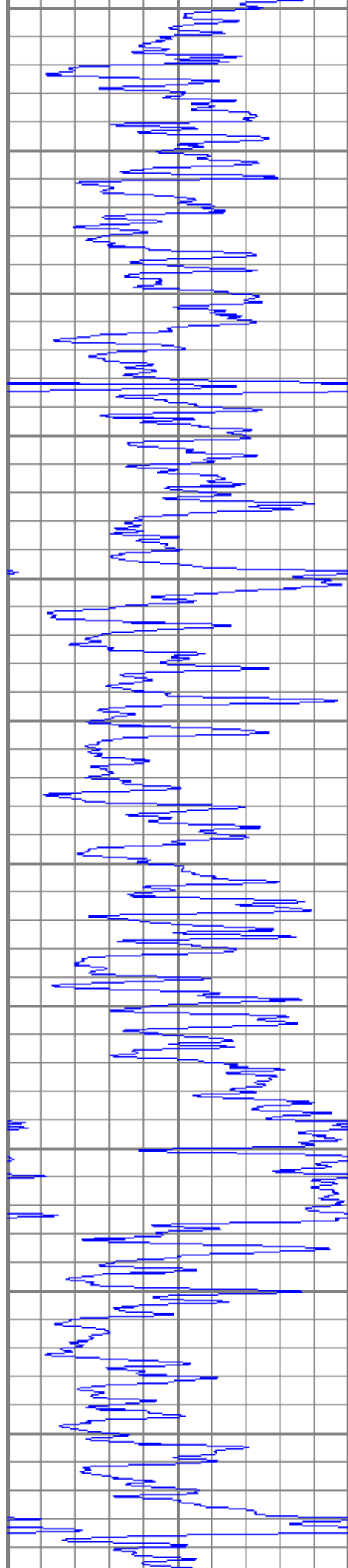


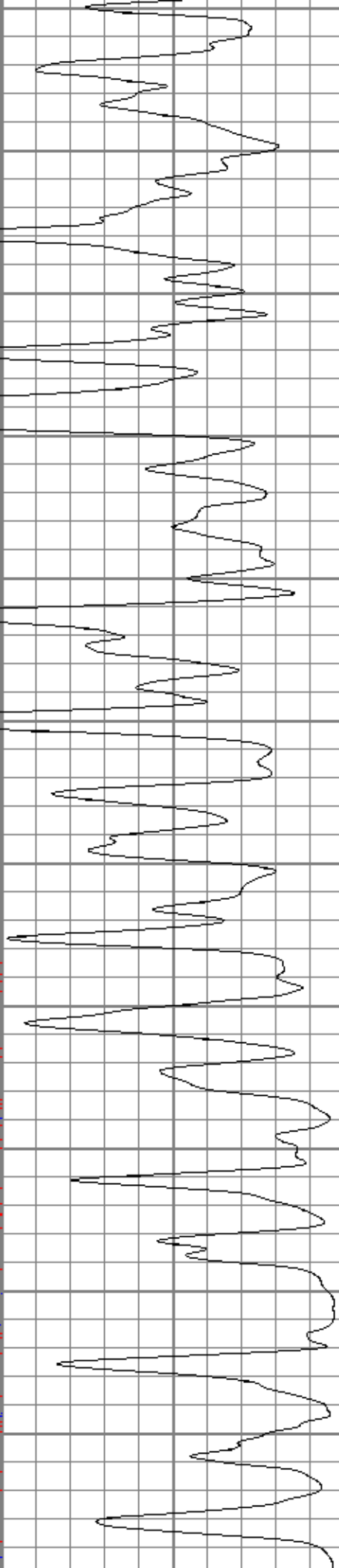
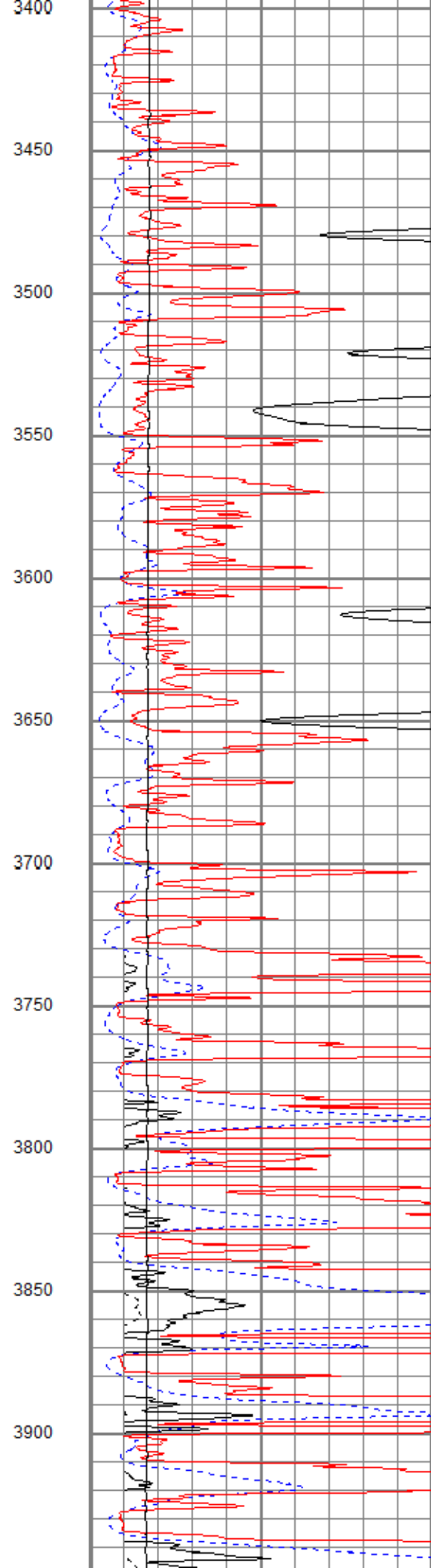
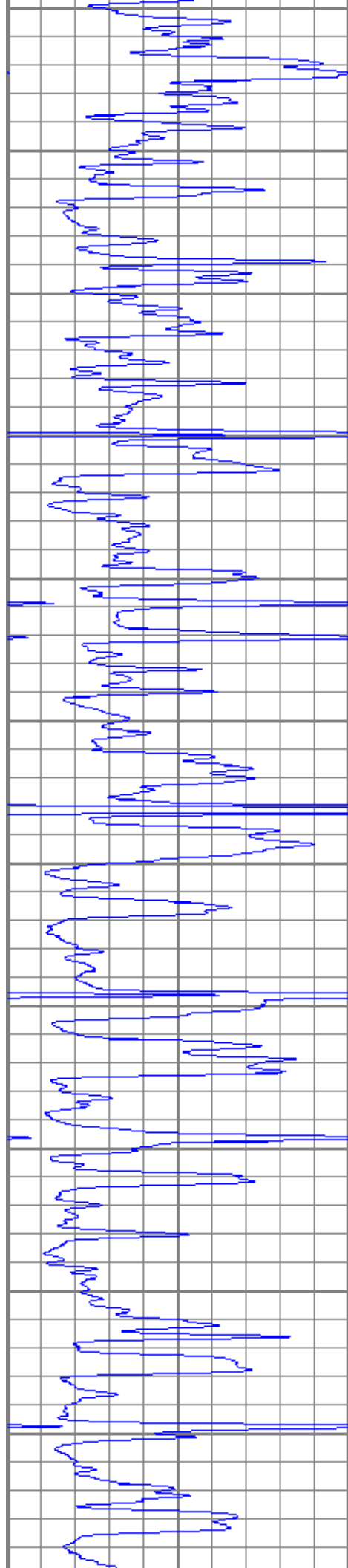


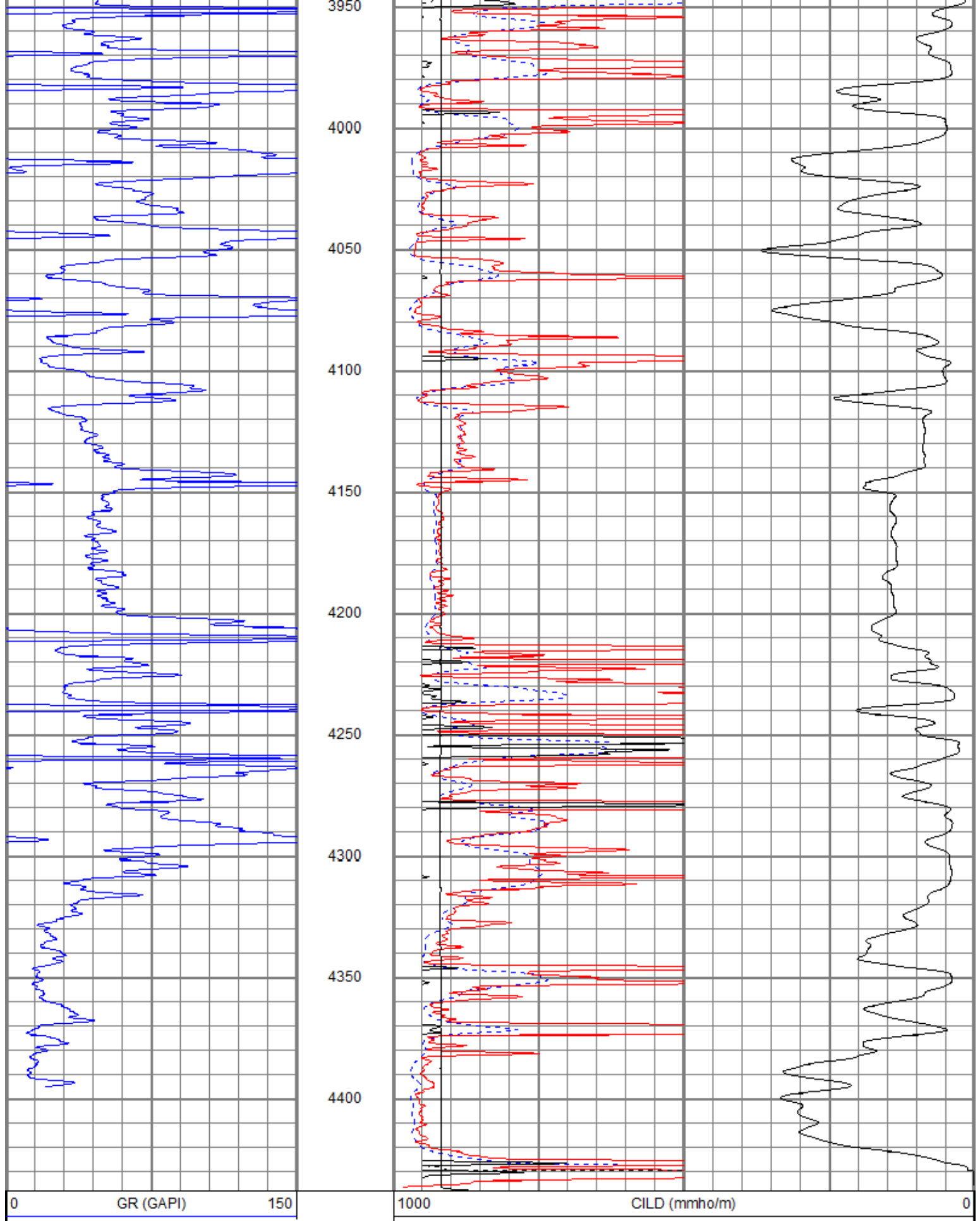
1750
1800
1850
1900
1950
2000
2050
2100
2150
2200
2250











0 GR (GAPI) 150

1000 CILD (mmho/m) 0

10000 LTEN (lb) 0

0 RILD (Ohm-m) 50

0 RLL3 (Ohm-m) 50

50 RILD x 10 (Ohm-m) 500

50 RLL3 x 10 (Ohm-m) 500

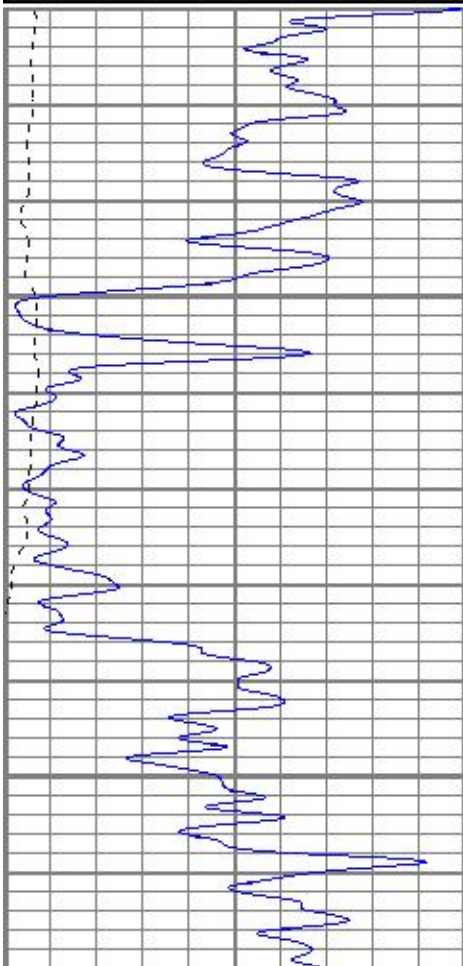


MAIN PASS

Database File pp18-3#1oh.db
 Dataset Pathname pass2.1
 Presentation Format kdil
 Dataset Creation Thu Jul 05 23:00:20 2018
 Charted by Depth in Feet scaled 1:240

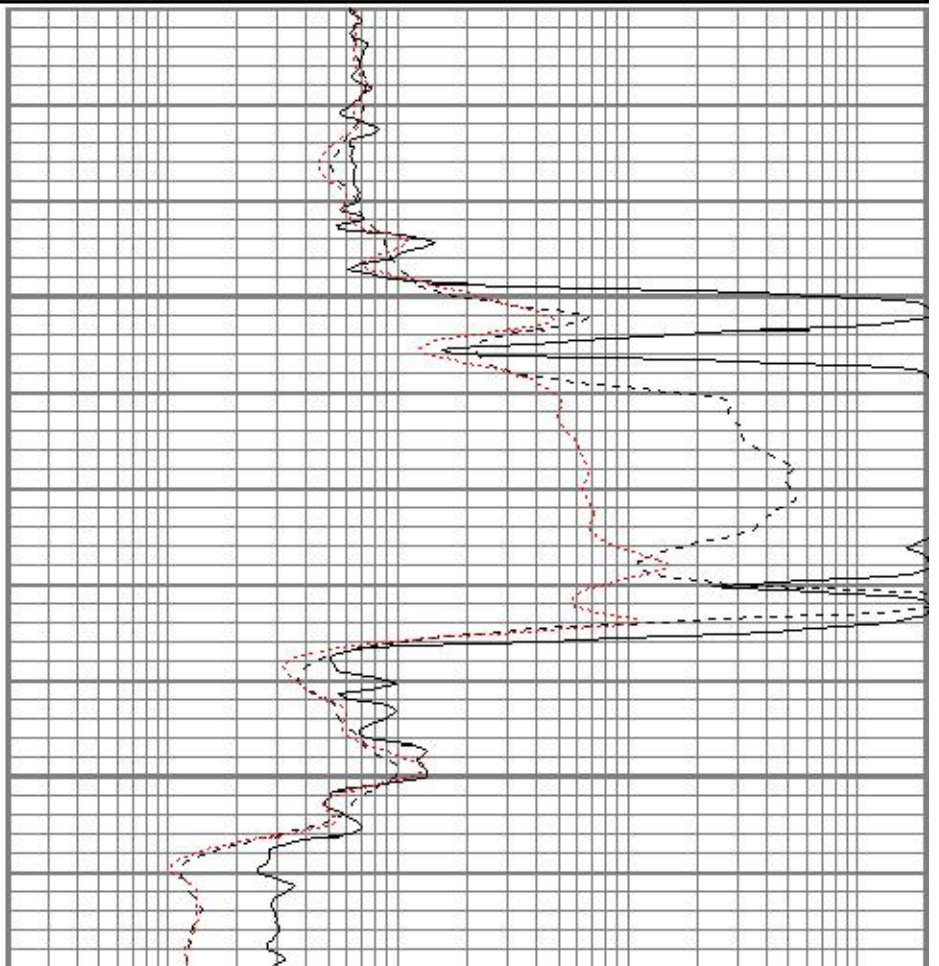
0	GR (GAPI)	150
-100	SP (mV)	100

0.2	RILD (Ohm-m)	2000
0.2	RLL3 (Ohm-m)	2000
0.2	RILM (Ohm-m)	2000



1850

1900



0	GR (GAPI)	150
-100	SP (mV)	100

0.2	RILD (Ohm-m)	2000
0.2	RLL3 (Ohm-m)	2000
0.2	RILM (Ohm-m)	2000

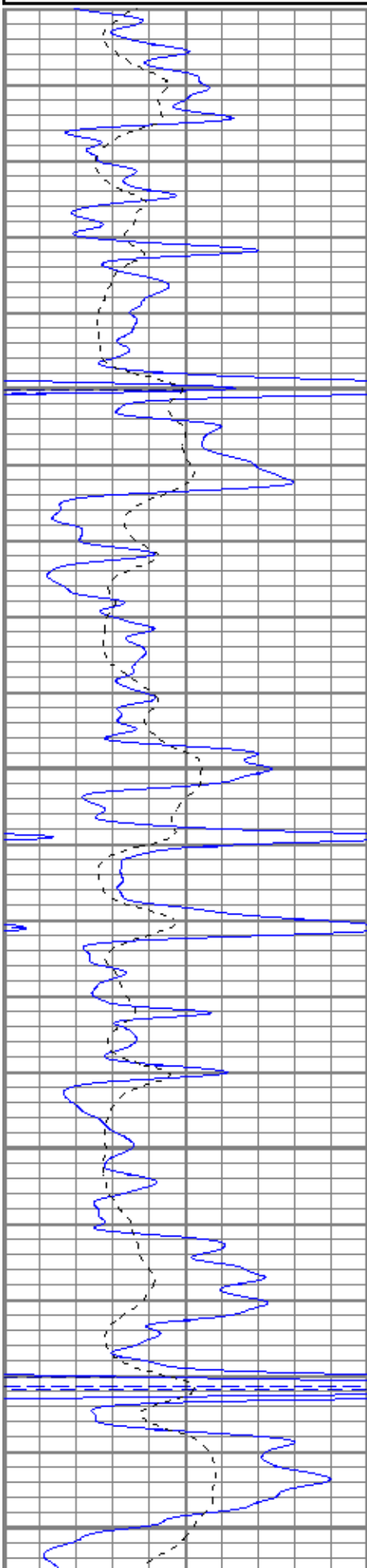


MAIN PASS

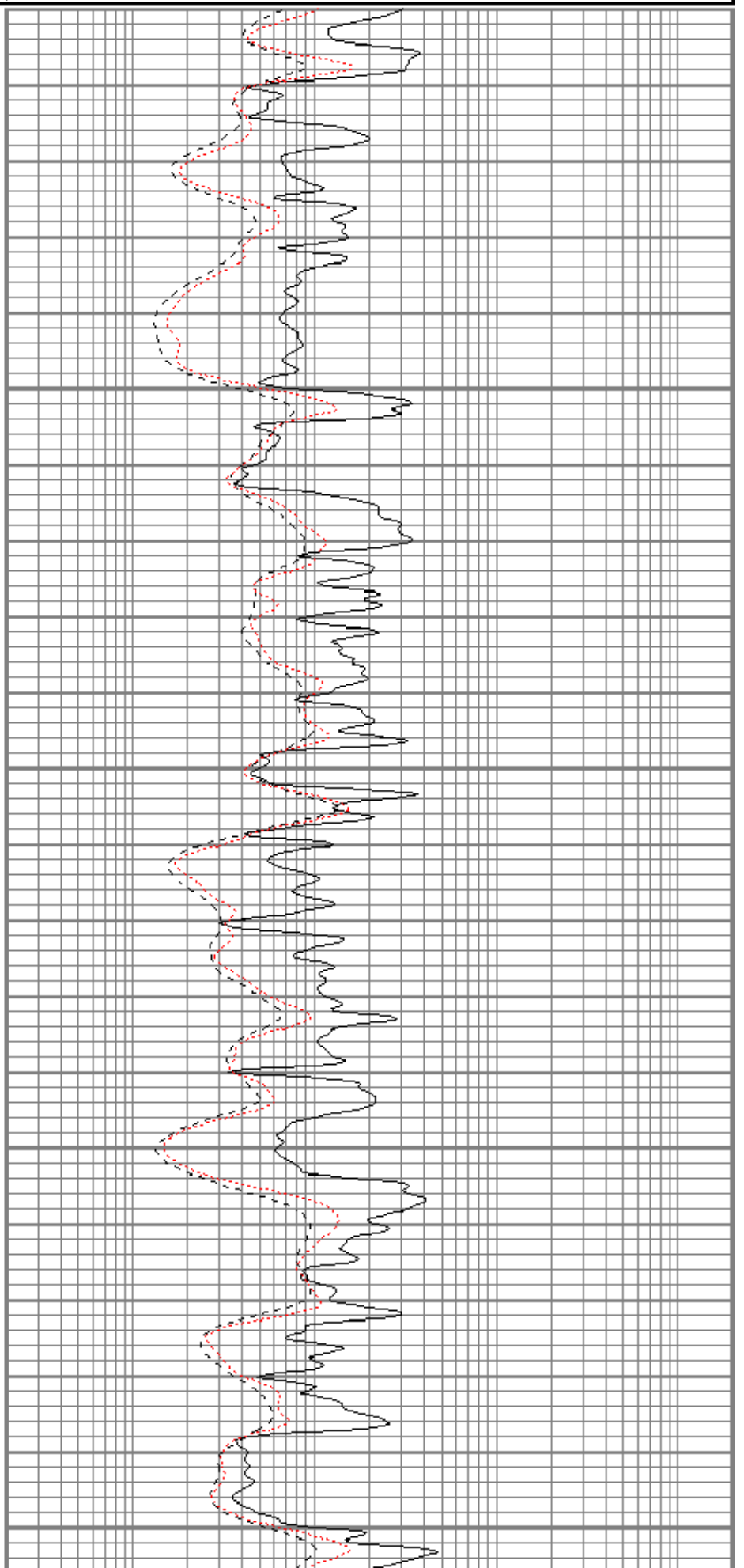
Database File pp18-3#1oh.db
 Dataset Pathname pass2.1
 Presentation Format kdil
 Dataset Creation Thu Jul 05 23:00:20 2018
 Charted by Depth in Feet scaled 1:240

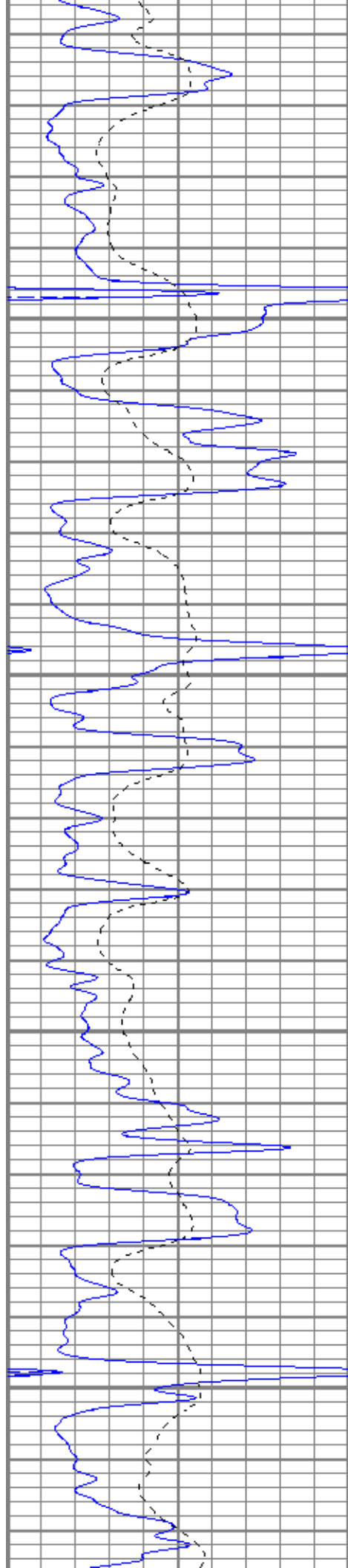
0	GR (GAPI)	150
-100	SP (mV)	100

0.2	RILD (Ohm-m)	2000
0.2	RLL3 (Ohm-m)	2000
0.2	RILM (Ohm-m)	2000



3500
3550
3600
3650
3700



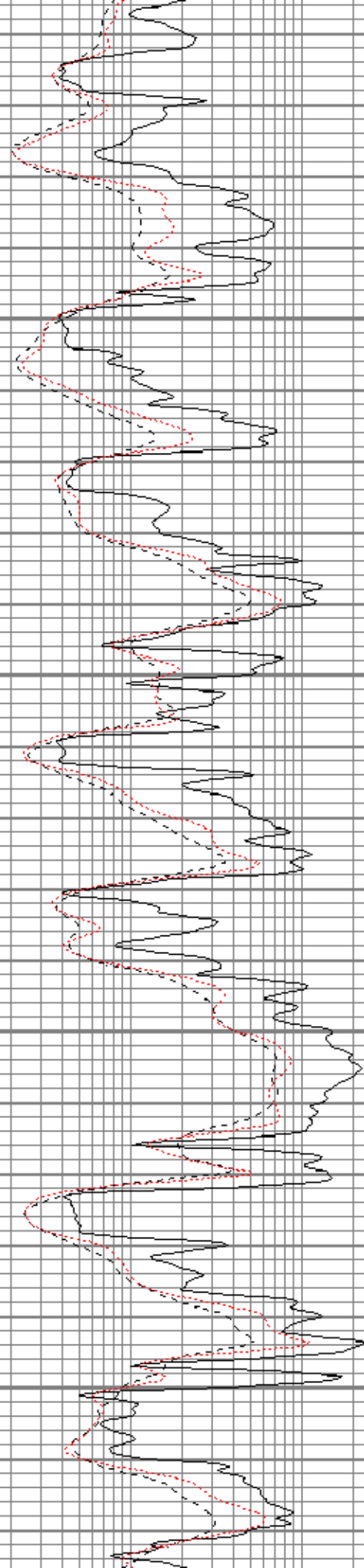


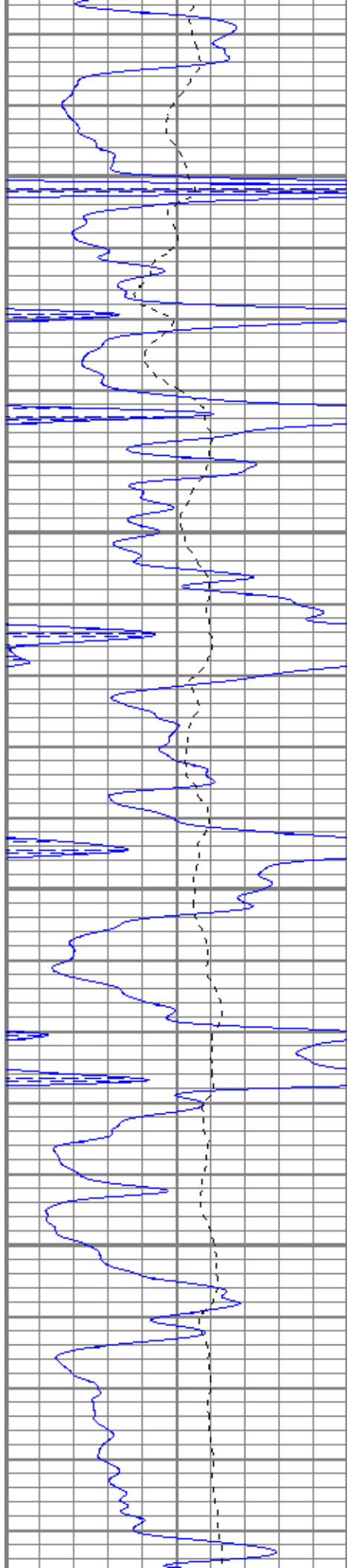
3750

3800

3850

3900



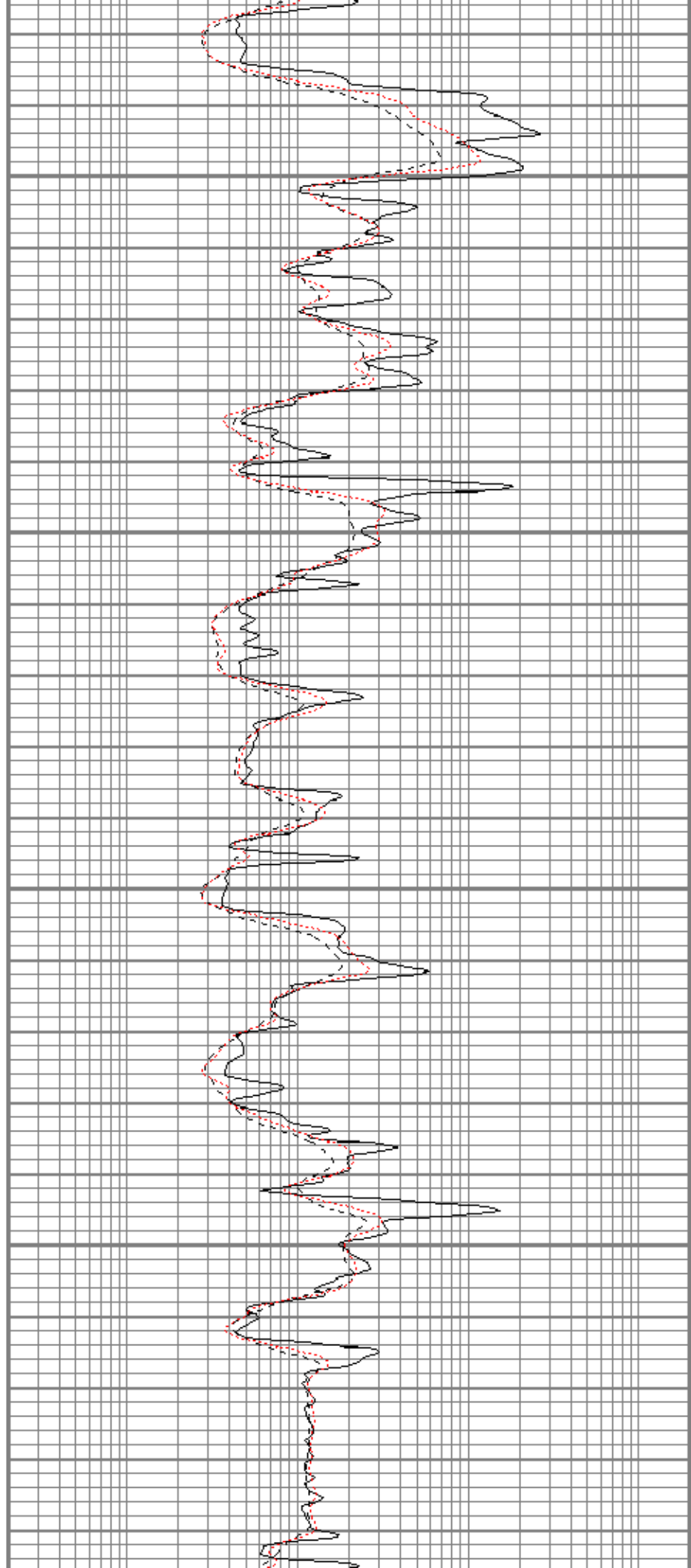


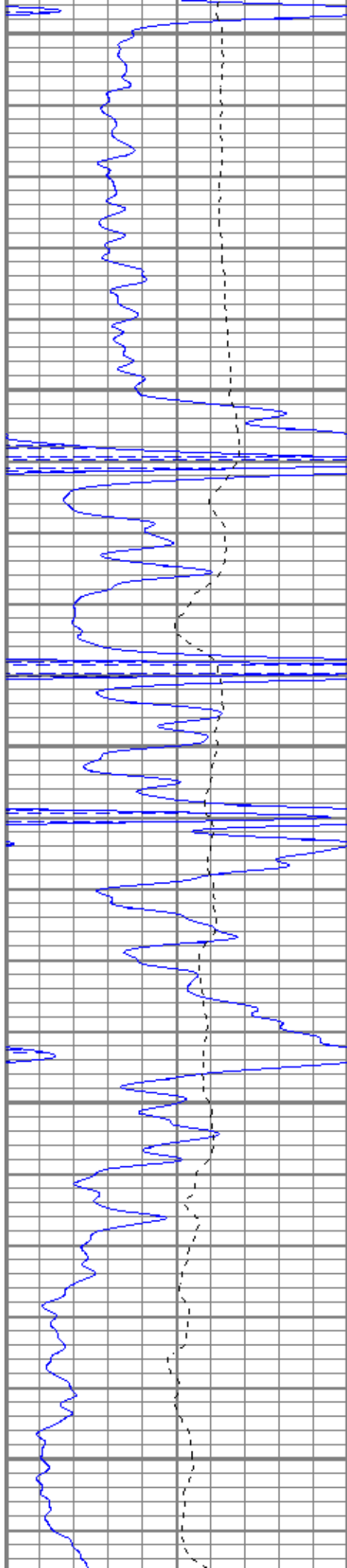
3950

4000

4050

4100





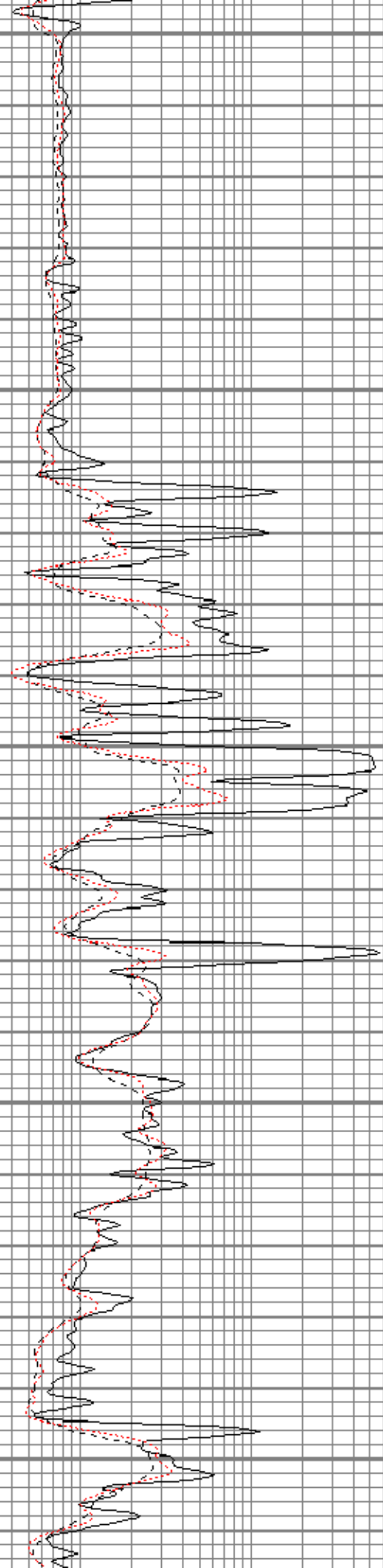
4150

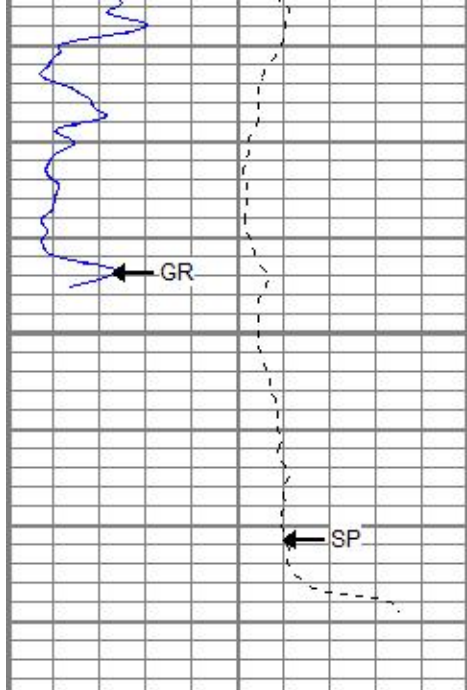
4200

4250

4300

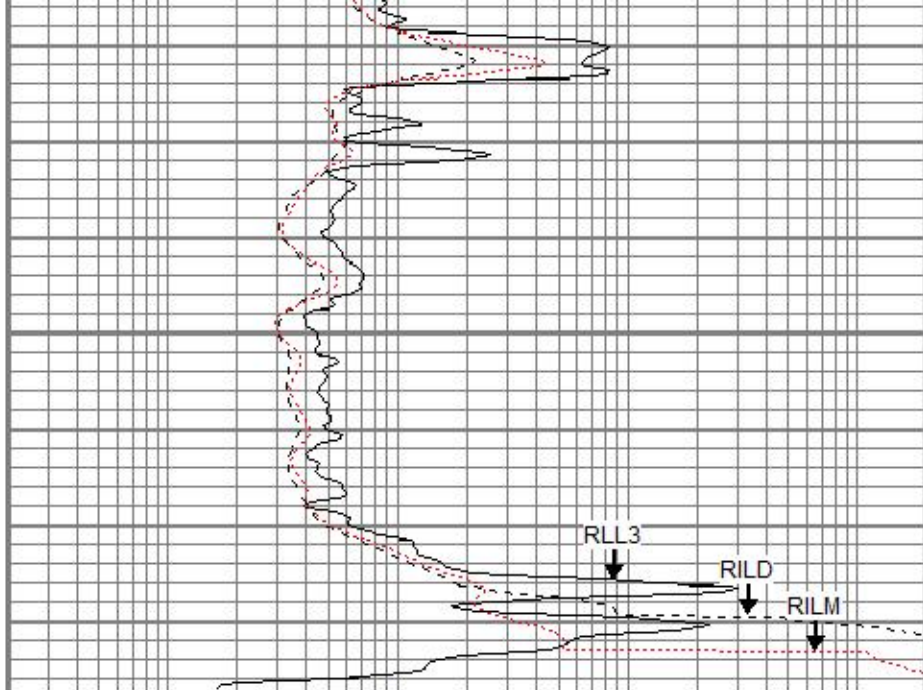
4350





4400

0	GR (GAPI)	150
-100	SP (mV)	100



0.2	RILD (Ohm-m)	2000
0.2	RLL3 (Ohm-m)	2000
0.2	RILM (Ohm-m)	2000

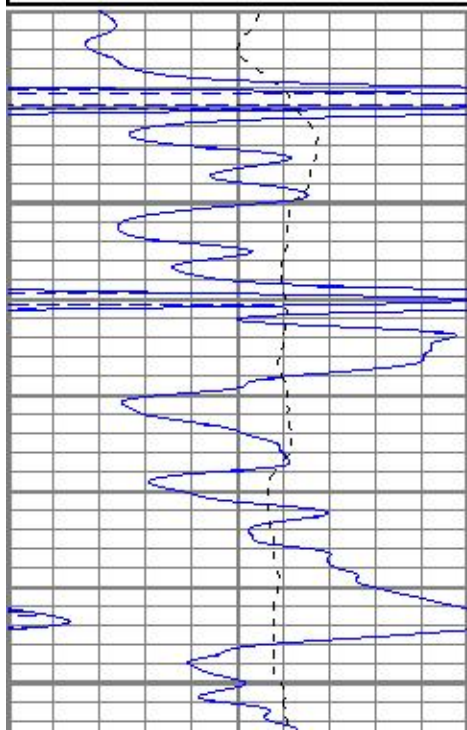


REPEAT SECTION

Database File pp18-3#1oh.db
 Dataset Pathname pass1.1
 Presentation Format kdil
 Dataset Creation Thu Jul 05 22:35:01 2018
 Charted by Depth in Feet scaled 1:240

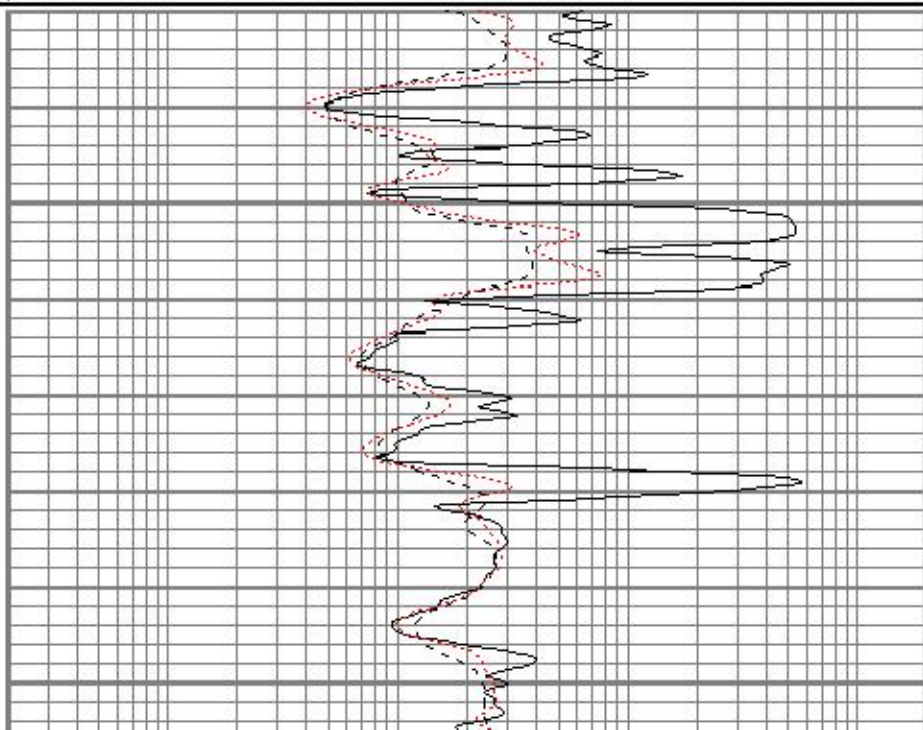
0	GR (GAPI)	150
-100	SP (mV)	100

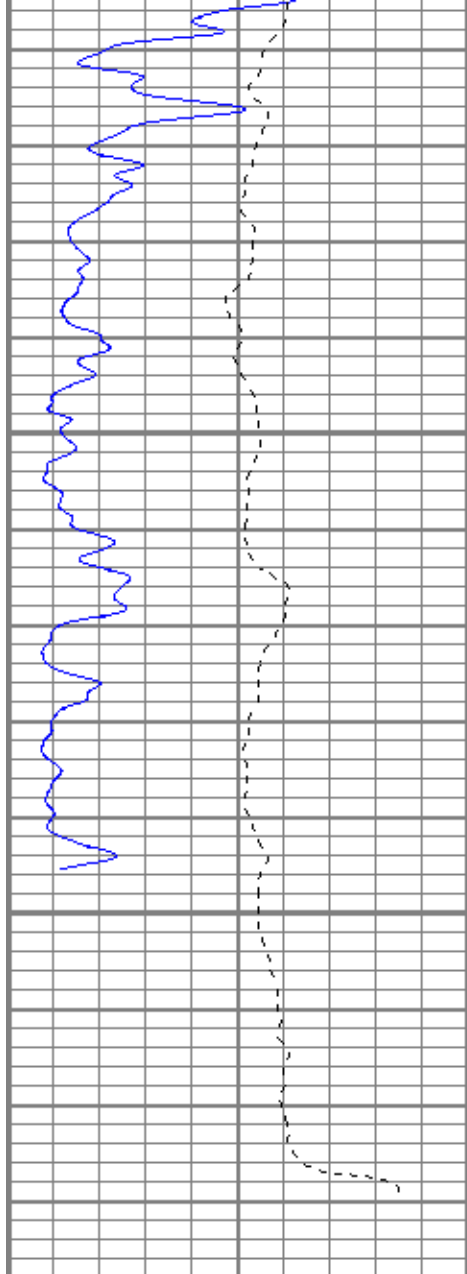
0.2	RILD (Ohm-m)	2000
0.2	RLL3 (Ohm-m)	2000
0.2	RILM (Ohm-m)	2000



4250

4300

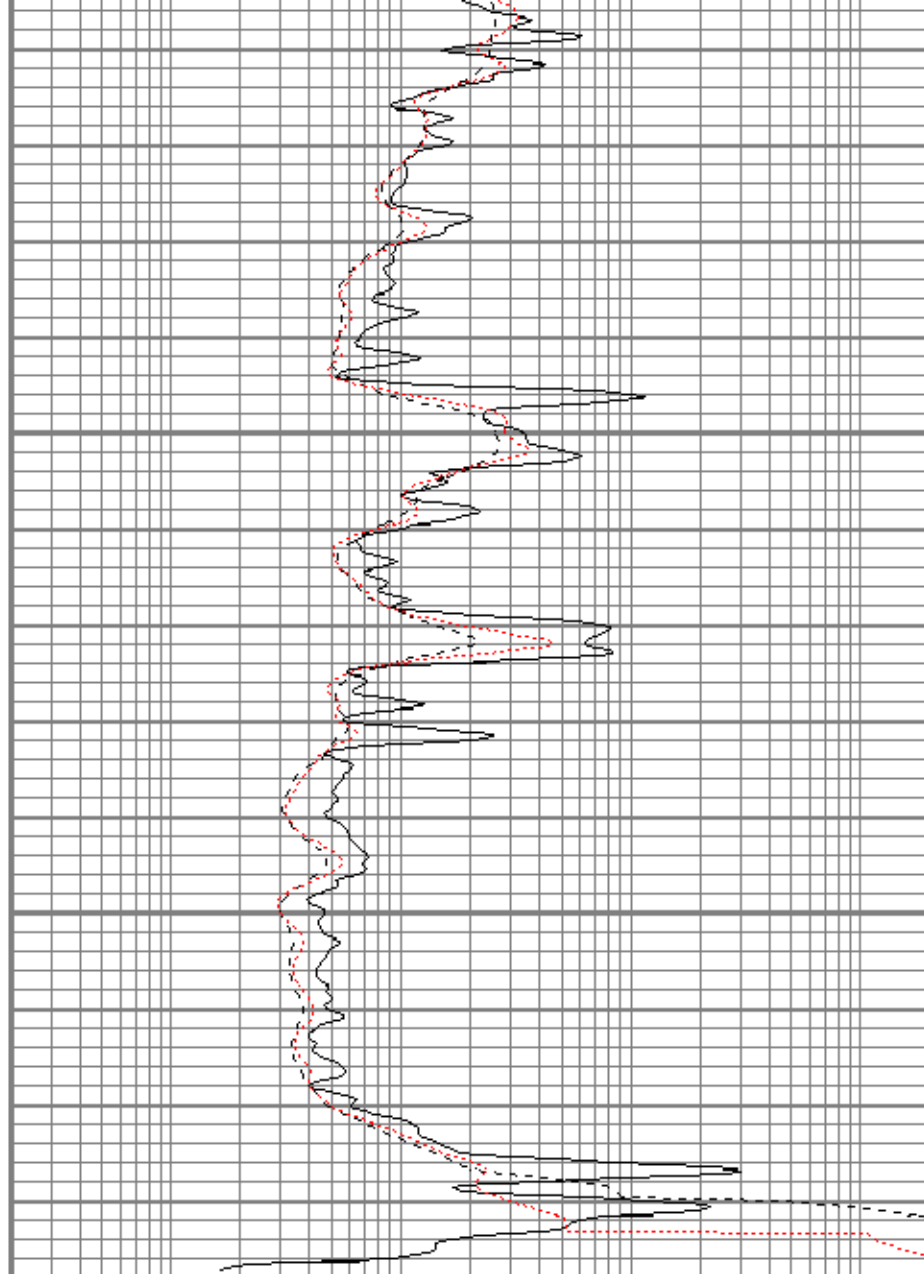




4350

4400

0	GR (GAPI)	150
-100	SP (mV)	100



0.2	RILD (Ohm-m)	2000
0.2	RLL3 (Ohm-m)	2000
0.2	RILM (Ohm-m)	2000

Calibration Report

Database File pp18-3#1oh.db
 Dataset Pathname pass2.1
 Dataset Creation Thu Jul 05 23:00:20 2018

Dual Induction Calibration Report

Serial-Model: 5375-G
 Surface Cal Performed: Mon Jun 04 17:57:18 2018
 Downhole Cal Performed: Mon Jun 04 17:57:18 2018
 After Survey Verification Performed: Mon Jun 04 17:57:18 2018

Surface Calibration

Loop:	Readings				References		Results	
	Air	Loop			Air	Loop	m	b
Deep	-0.002	0.655	V	0.000	350.000	mmho/m	532.190	1.293
Medium	0.011	0.730	V	0.000	400.000	mmho/m	555.870	-5.985
Internal:	Zero	Cal		Zero	Cal		m	b

Deep	-0.002	0.654	V	0.000	350.000	mmho/m	532.823	1.314
Medium	0.011	0.731	V	0.000	550.000	mmho/m	763.357	-8.251

Downhole Calibration								
Internal:	Readings			References			Results	
	Zero	Cal		Zero	Cal		m	b
Deep	0.000	0.000	mmho/m	-0.019	349.565	mmho/m	1.000	0.000
Medium	0.000	0.000	mmho/m	0.024	400.529	mmho/m	1.000	0.000
Shallow	2.433	0.017	V	500.000	2.000	Ohm-m	200.067	1.624

After Survey Verification								
Internal:	Readings			Targets			Results	
	Zero	Cal		Zero	Cal		m'	b'
Deep	0.000	0.000	mmho/m	0.000	0.000	mmho/m	1.000	0.000
Medium	0.000	0.000	mmho/m	0.000	0.000	mmho/m	1.000	0.000
Shallow	0.000	0.000	Ohm-m	500.000	2.000	Ohm-m	1.000	0.000

Neutron Calibration Report

Serial Number:	2017
Tool Model:	lithogearhart
Performed:	(Not Performed)
Calibrator Value:	1 NAPI
Calibrator Reading:	1 cps
Sensitivity:	1 NAPI/cps

Temperature Calibration Report

Serial Number:	WithOutMC			
Tool Model:	WOMC			
Performed:	(Not Performed)			
	Reference		Reading	
Low Reference:	0.00 degF		0.00 degF	
High Reference:	1.00 degF		1.00 degF	
Gain:	1.00			
Offset:	0.00			
Delta Spacing	1			

Inclinometer Calibration Report

Performed:	Wed Dec 06 22:31:06 2017				
	Low Read.	High Read.	Low Ref.	High Ref.	
X Accelerometer	205.00	1843.00	-1.00	1.00	gee
Y Accelerometer	205.00	1843.00	-1.00	1.00	gee
Z Accelerometer					gee

Gamma Ray Calibration Report

Serial Number:	WithOutMC
Tool Model:	WOMC
Performed:	Wed Dec 06 22:30:58 2017

Calibrator Value: 1.0 GAPI
 Background Reading: 0.0 cps
 Calibrator Reading: 1.0 cps
 Sensitivity: 1.0000 GAPI/cps

Sensor	Offset (ft)	Schematic	Description	Length (ft)	O.D. (in)	Weight (lb)
GR	40.07		CHD-STD	0.50	1.69	1.00
ACCY	38.91		ADT-WOMC (WithOutMC) Telemetry Without Mud Cell	4.58	3.50	120.00
ACCX	38.91					
SSTAT	38.49		NEU-lithogearhart (2017)	5.65	3.50	85.00
PSTAT	37.66					
ASTAT	37.66					
GRD	36.82		ADT1LITH-A (1) Admyr Litho Density Tool	9.29	3.50	240.00
TEMP	36.82					
NEU	33.46					
LStat	24.30					
LS8	23.64					
LS7	23.64					
LS6	23.64					
LS5	23.64					
LS4	23.64					
LS3	23.64					
LS2	23.64		DIL-G (5375) Gearhart	21.47	4.00	345.00
LS1	23.64					
LSV	23.64					
LSD	23.62					
SSV	23.43					
SS8	23.43					
SS7	23.43					
SS6	23.43					
SS5	23.43					
SS4	23.43					
SS3	23.43					
SS2	23.43					
SS1	23.43					
DCAL	23.37		RLL3			
SSD	23.04					
SP	10.60					
CILD	10.60		TR_Mon			
CILM	6.89					
		Dataset:	pp18-3#1oh.db: field/well/run1/pass2.1			
		Total length:	41.49 ft			
		Total weight:	791.00 lb			
		O.D.:	4.00 in			