



**BOREHOLE
COMPENSATED
SONIC
LOG**

Company Palomino Petroleum
Well 18-3 #1
Field Revilo
County Trego
State Kansas

Company Palomino Petroleum
Well 18-3 #1
Field Revilo
County Trego State Kansas

Location: API #: 15 195 23059
2281' FNL & 1802' FWL
SEC 18 TWP 15S RGE 25W
Permanent Datum Ground Level Elevation 2399'
Log Measured From KB 8' AGL
Drilling Measured From KB
Other Services
CDNL
ML
DIL
Elevation
K.B. 2407'
D.F. 2406'
G.L. 2399'

| | |
|------------------------------|--------------------|
| Date | 7-5-18 |
| Run Number | Two |
| Depth Driller | 4440' |
| Depth Logger | 4438' |
| Bottom Logged Interval | 4429' |
| Top Log Interval | 300' |
| Casing Driller | 8 5/8" @ 219' |
| Casing Logger | 219' |
| Bit Size | 7 7/8" |
| Type Fluid in Hole | Chemical |
| Density / Viscosity | 9.0/57 |
| PH / Fluid Loss | 10.5/6.4 |
| Source of Sample | Pit |
| Rm @ Meas. Temp | 1.6@88degf |
| Rmf @ Meas. Temp | 1.28@88degf |
| Rmc @ Meas. Temp | 2.05@88degf |
| Source of Rmf / Rmc | Calculated |
| Rm @ BHT | 1.17@120degf |
| Time Circulation Stopped | 7:15 p.m |
| Time Logger on Bottom | 11:25 p.m |
| Maximum Recorded Temperature | 120degf |
| Equipment Number | T127 |
| Location | Hays, KS |
| Recorded By | C.Patterson |
| Witnessed By | Mr. Jerry A. Smith |

<<< Fold Here >>>

All interpretations are opinions based on inferences from electrical or other measurements and we cannot and do not guarantee the accuracy or correctness of any interpretation, and we shall not, except in the case of gross or willful negligence on our part, be liable or responsible for any loss, costs, damages, or expenses incurred or sustained by anyone resulting from any interpretation made by any of our officers, agents or employees. These interpretations are also subject to our general terms and conditions set out in our current Price Schedule.

Comments

East side of Utica to Rd. E, North 8 miles, East into. (By Palomino Tank Batteries)
go East 1/4 mi, South into Location through cattle Guard

Thanks for using Gemini Wireline LLC
785-625-1182

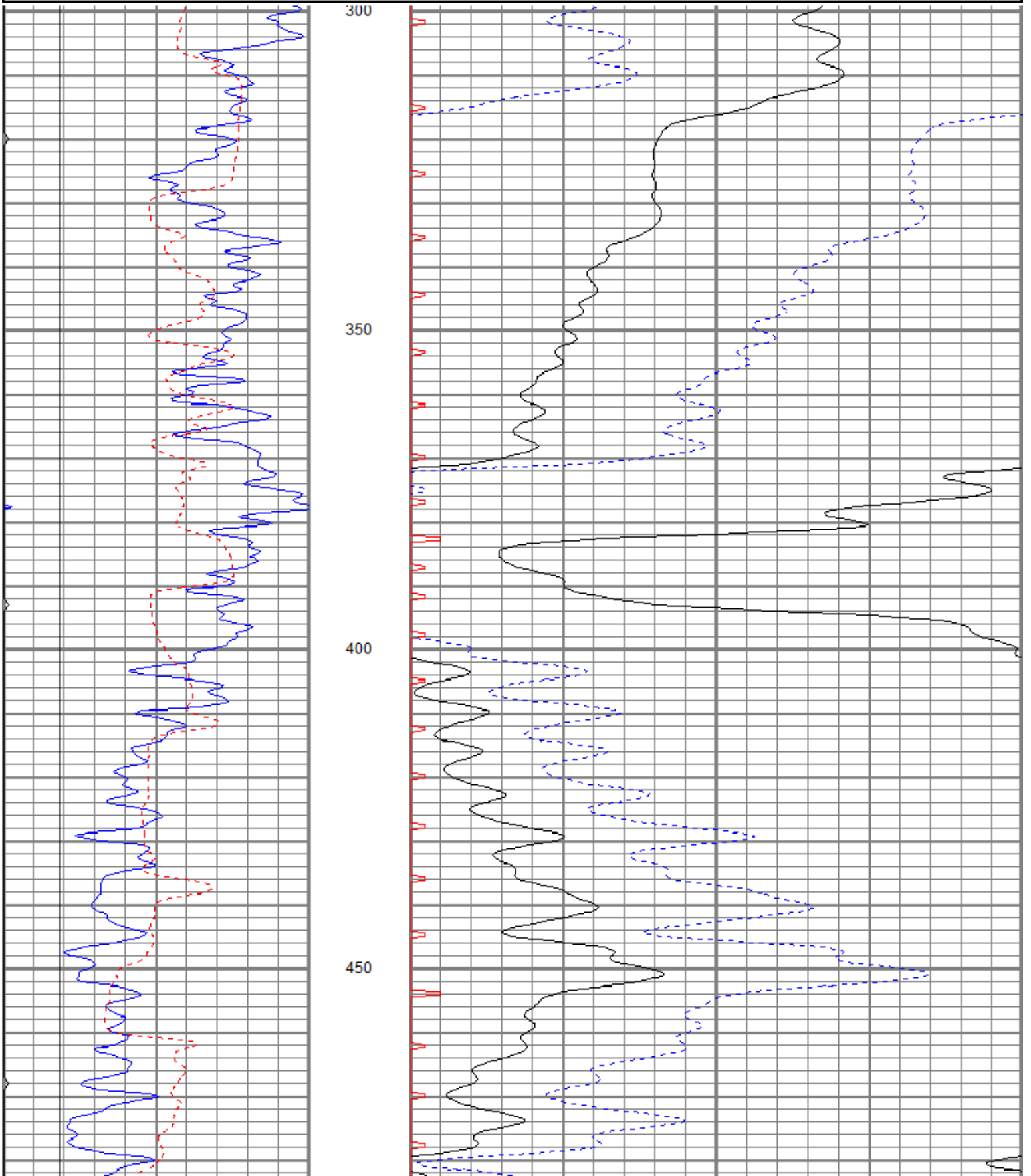


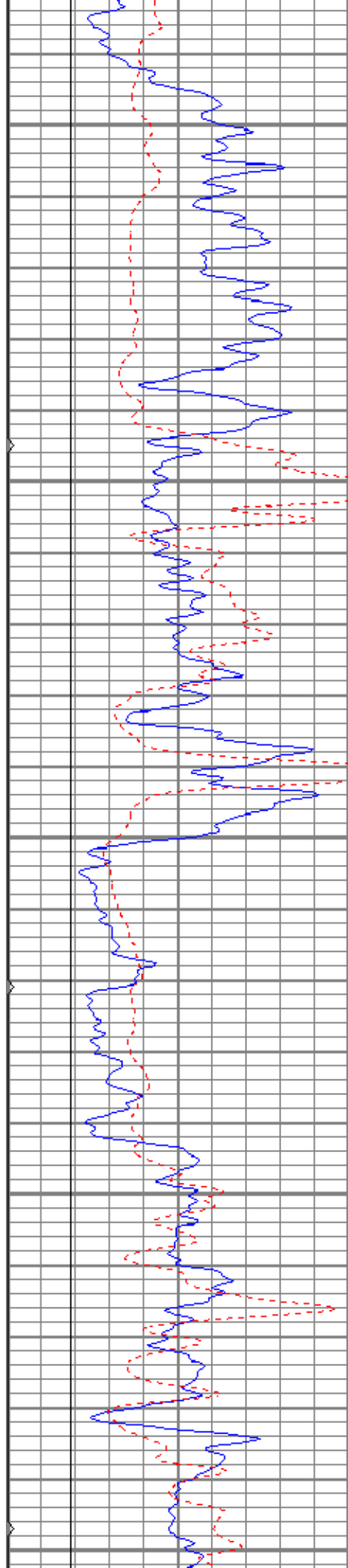
MAIN PASS

Database File pp18-3#10h.db
 Dataset Pathname pass4
 Presentation Format kbcs
 Dataset Creation Thu Jul 05 23:40:28 2018
 Charted by Depth in Feet scaled 1:240

| | | |
|---|-------------|-----|
| 0 | GR (GAPI) | 150 |
| 6 | MCAL (in) | 16 |
| 6 | BOREID (in) | 16 |
| 0 | MINMK | 50 |

| | | |
|-----|--------------|-----|
| 140 | DT (usec/ft) | 40 |
| 30 | SPOR (pu) | -10 |
| 0 | ITT (msec) | 20 |





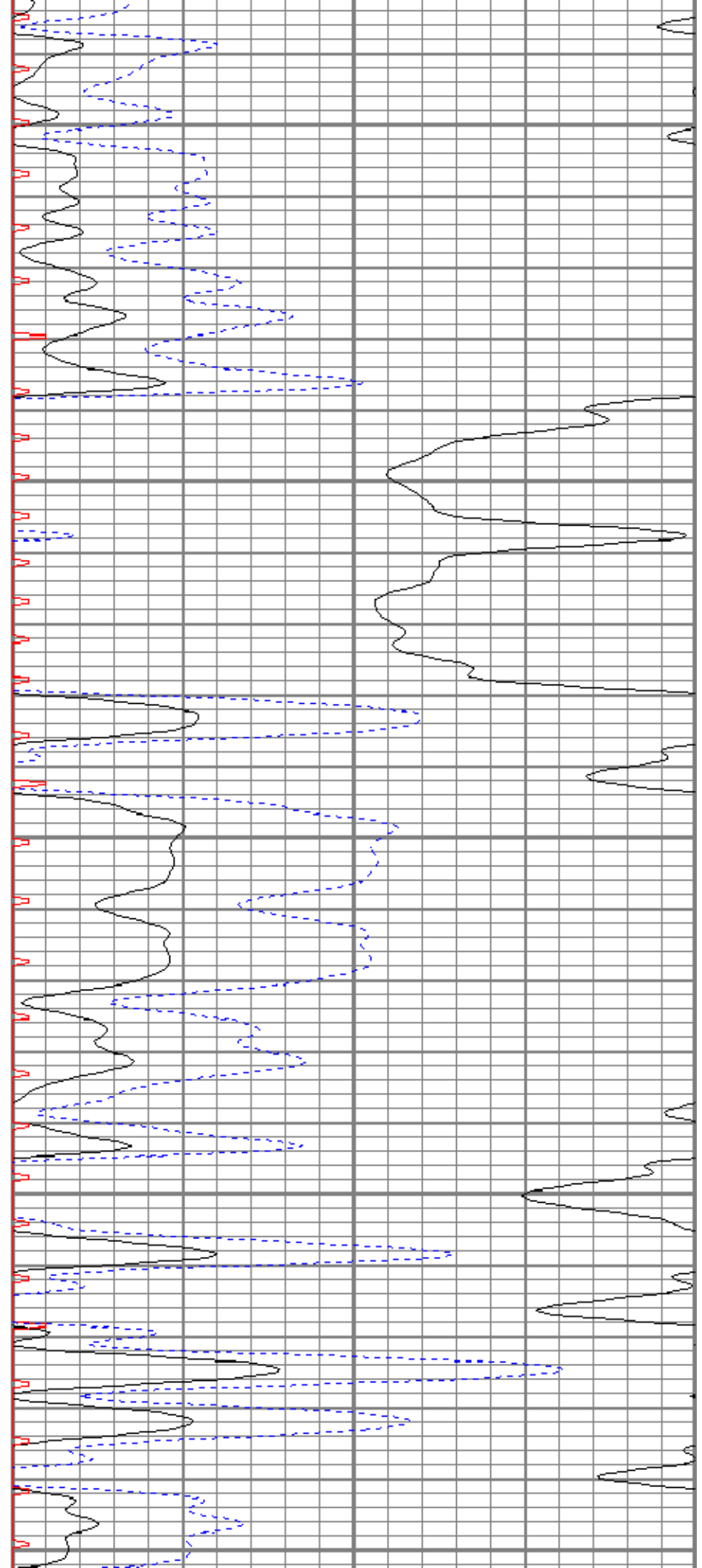
500

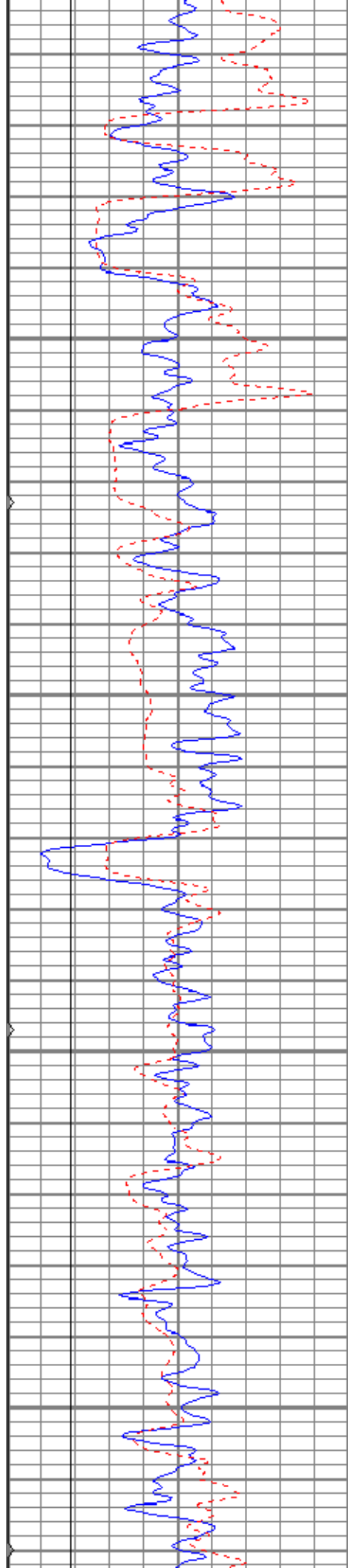
550

600

650

700



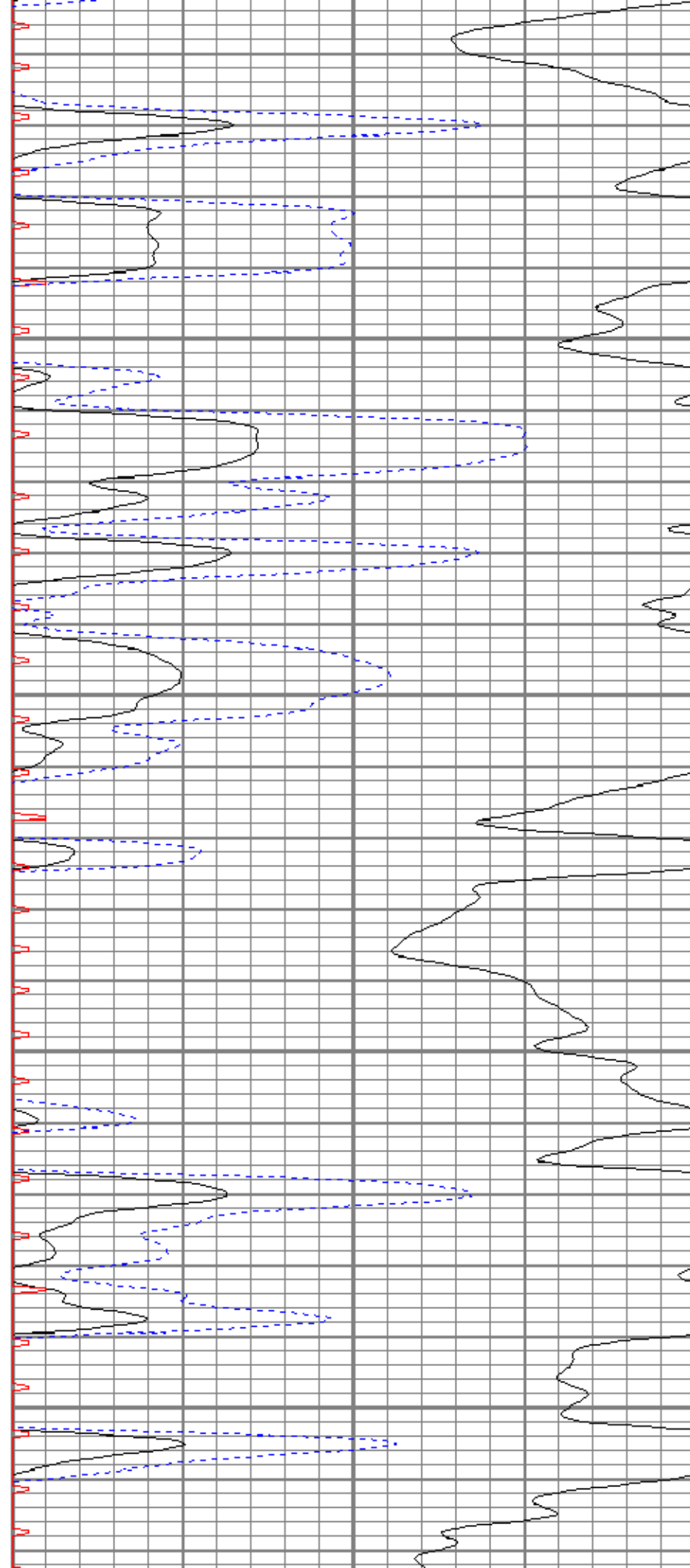


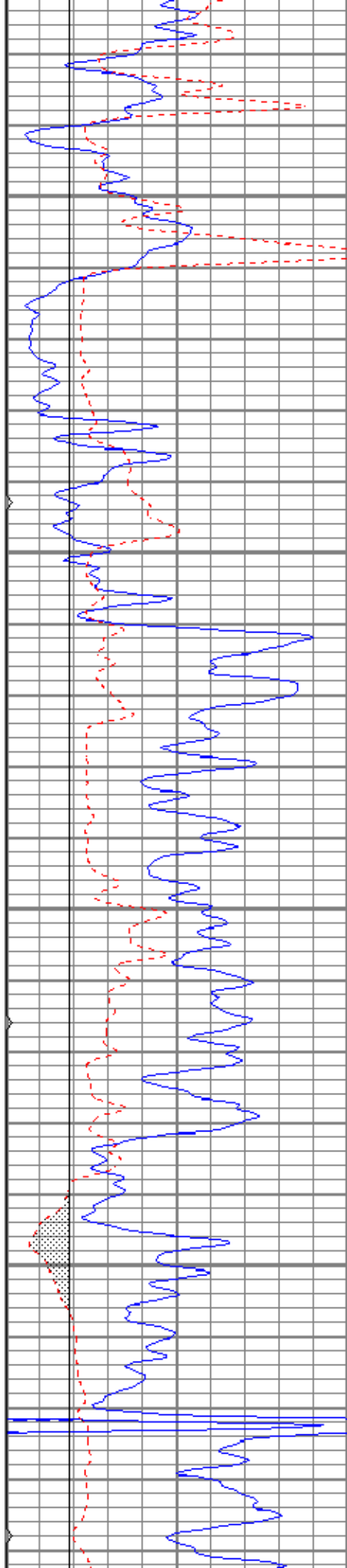
750

800

850

900



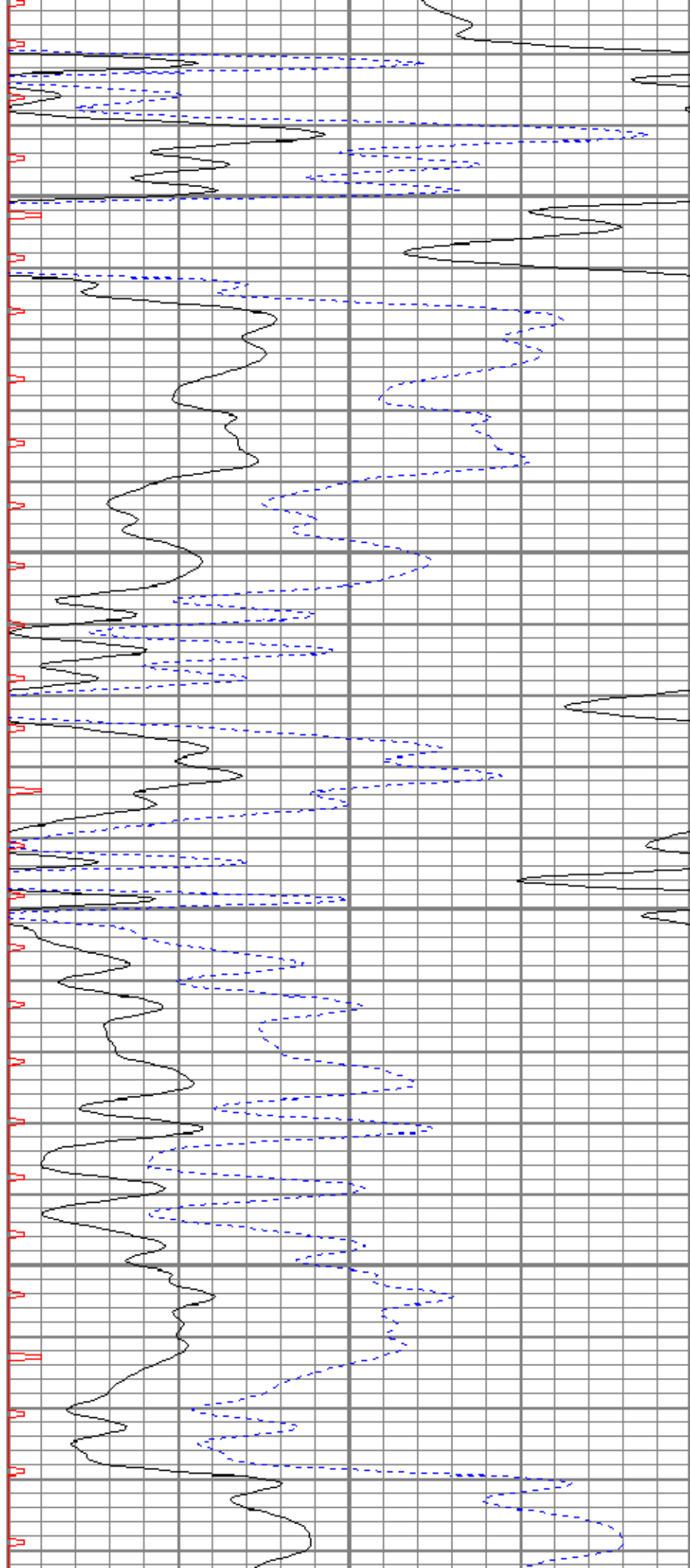


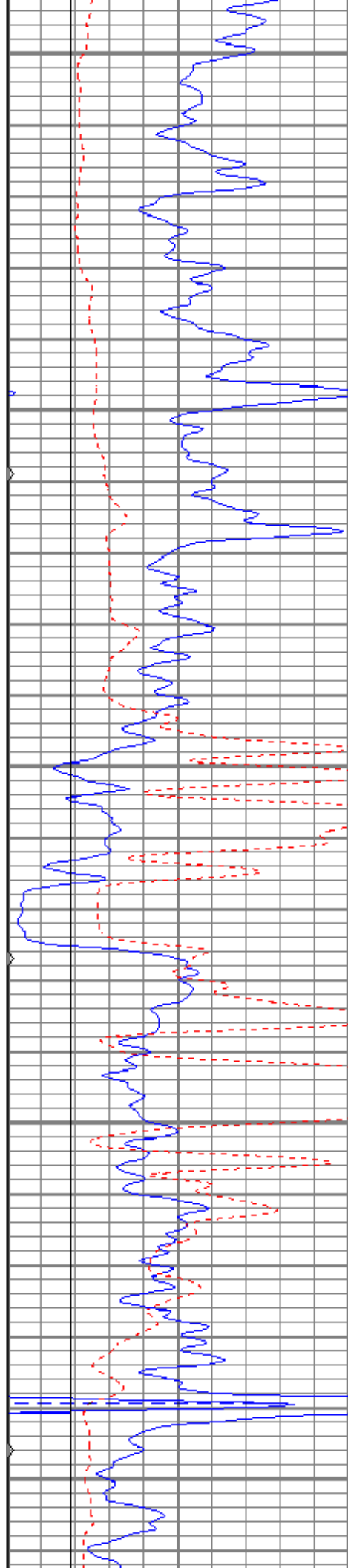
950

1000

1050

1100





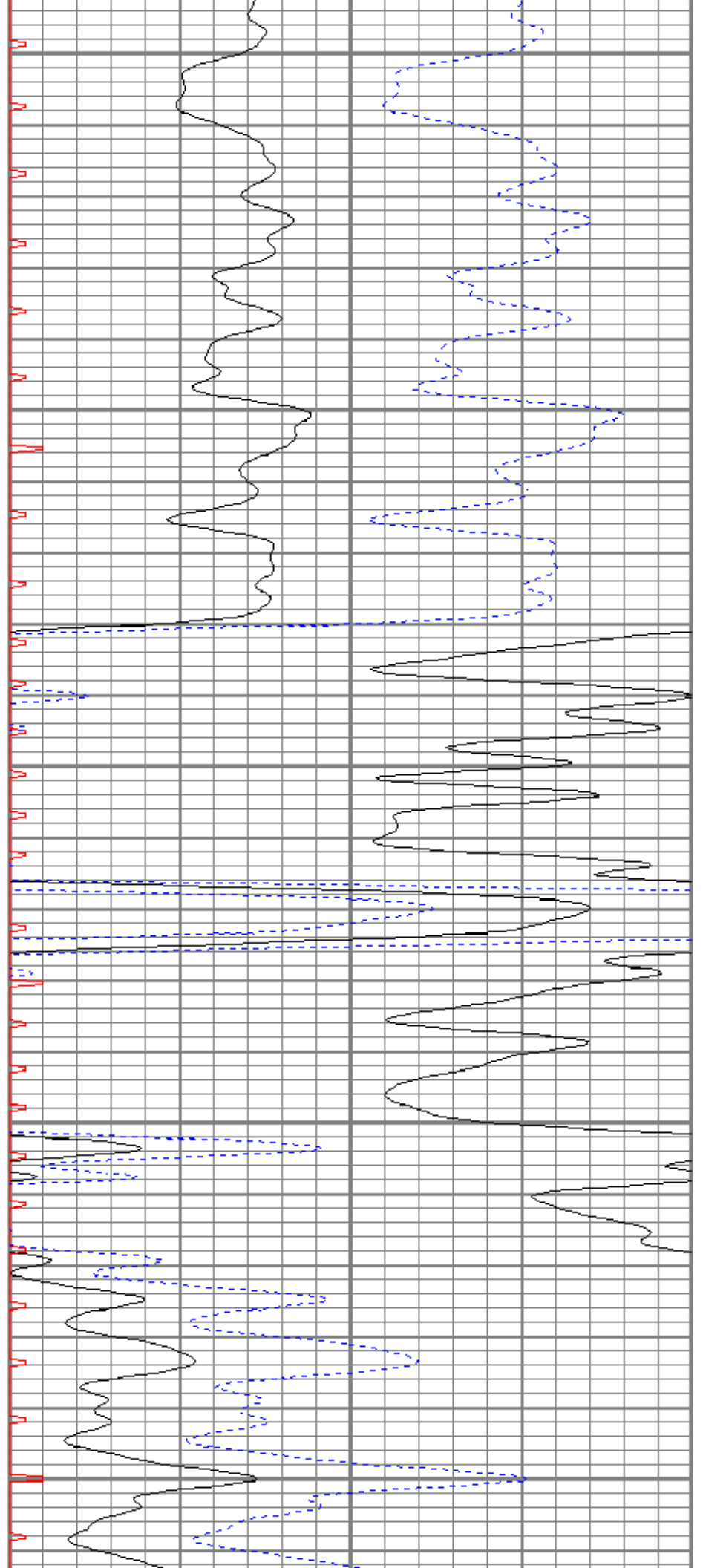
1150

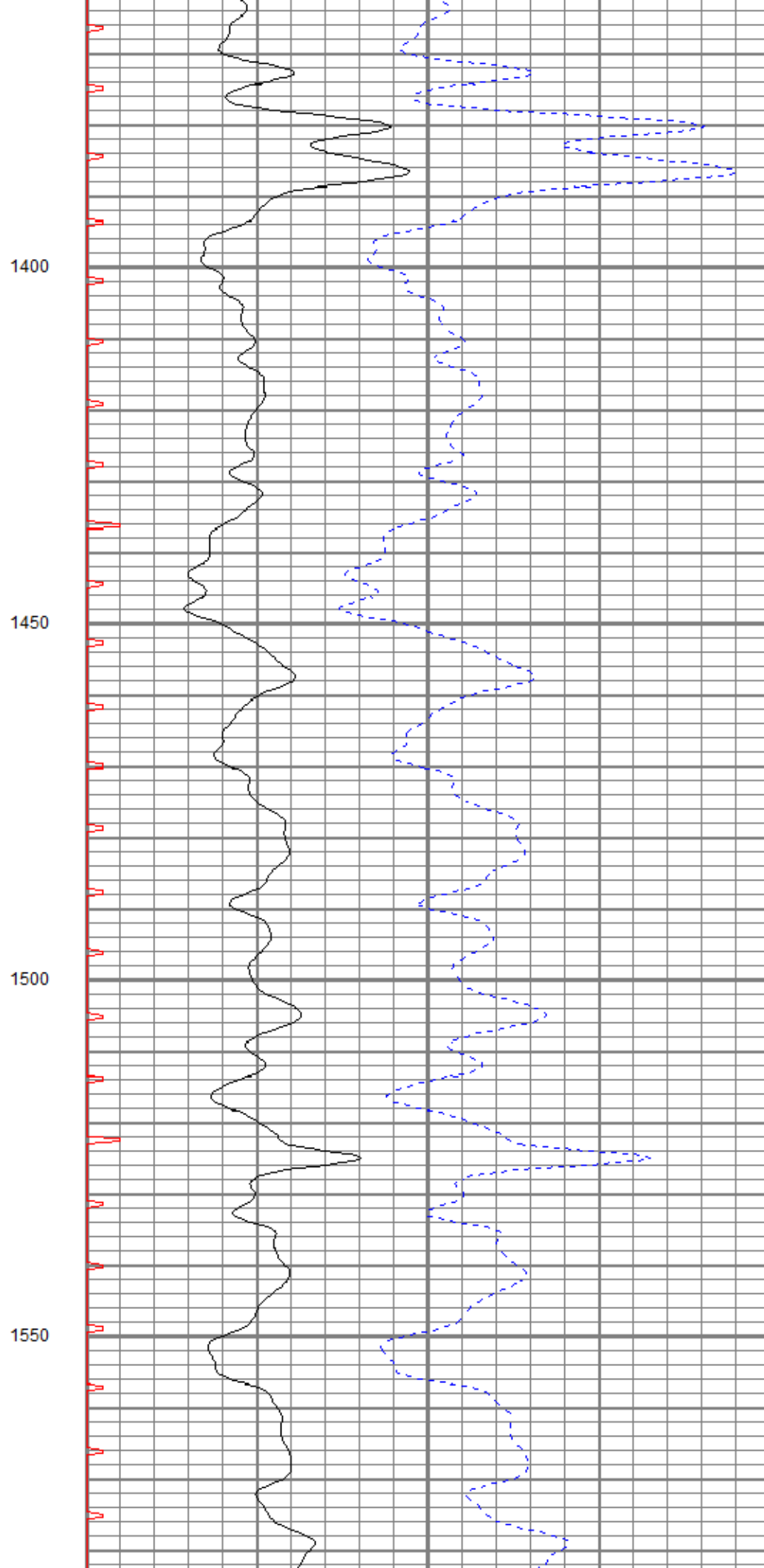
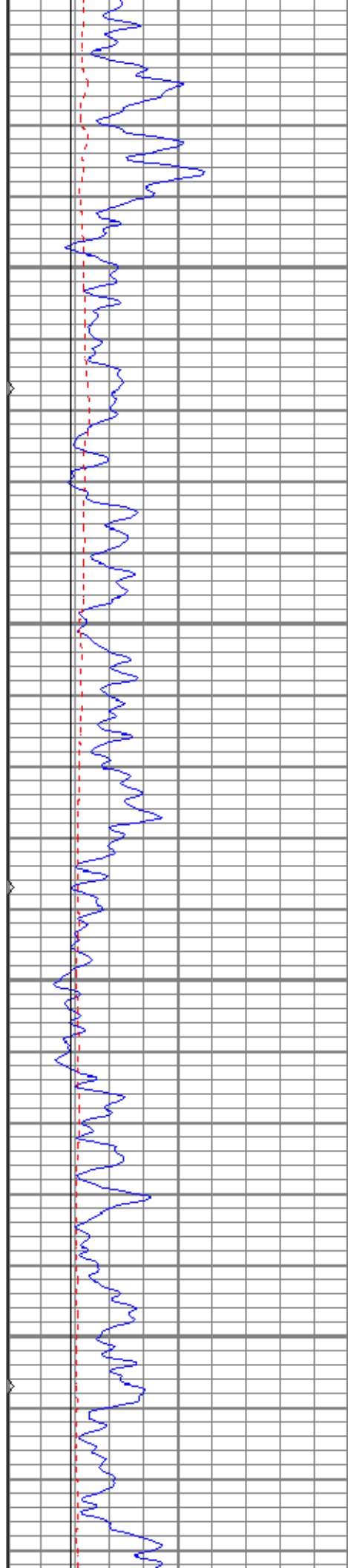
1200

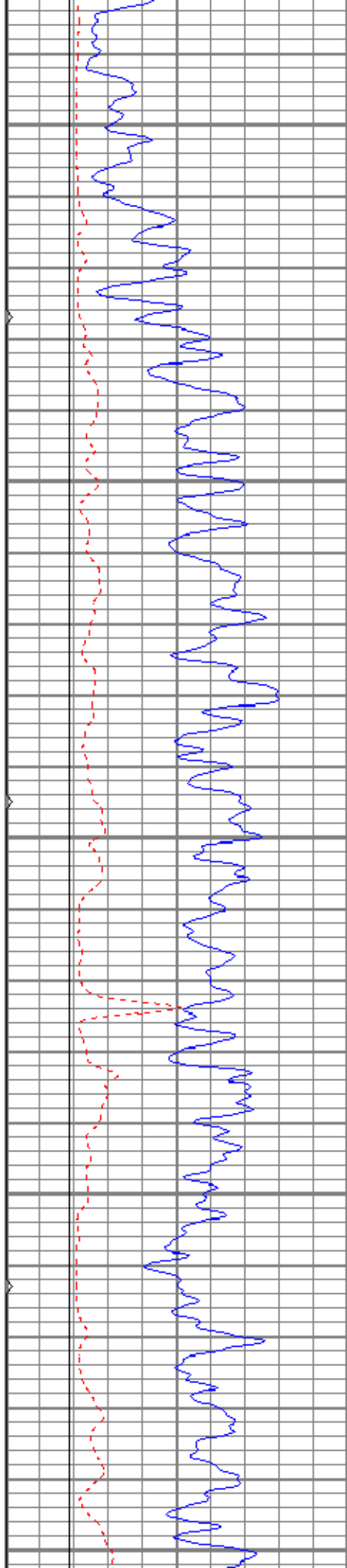
1250

1300

1350







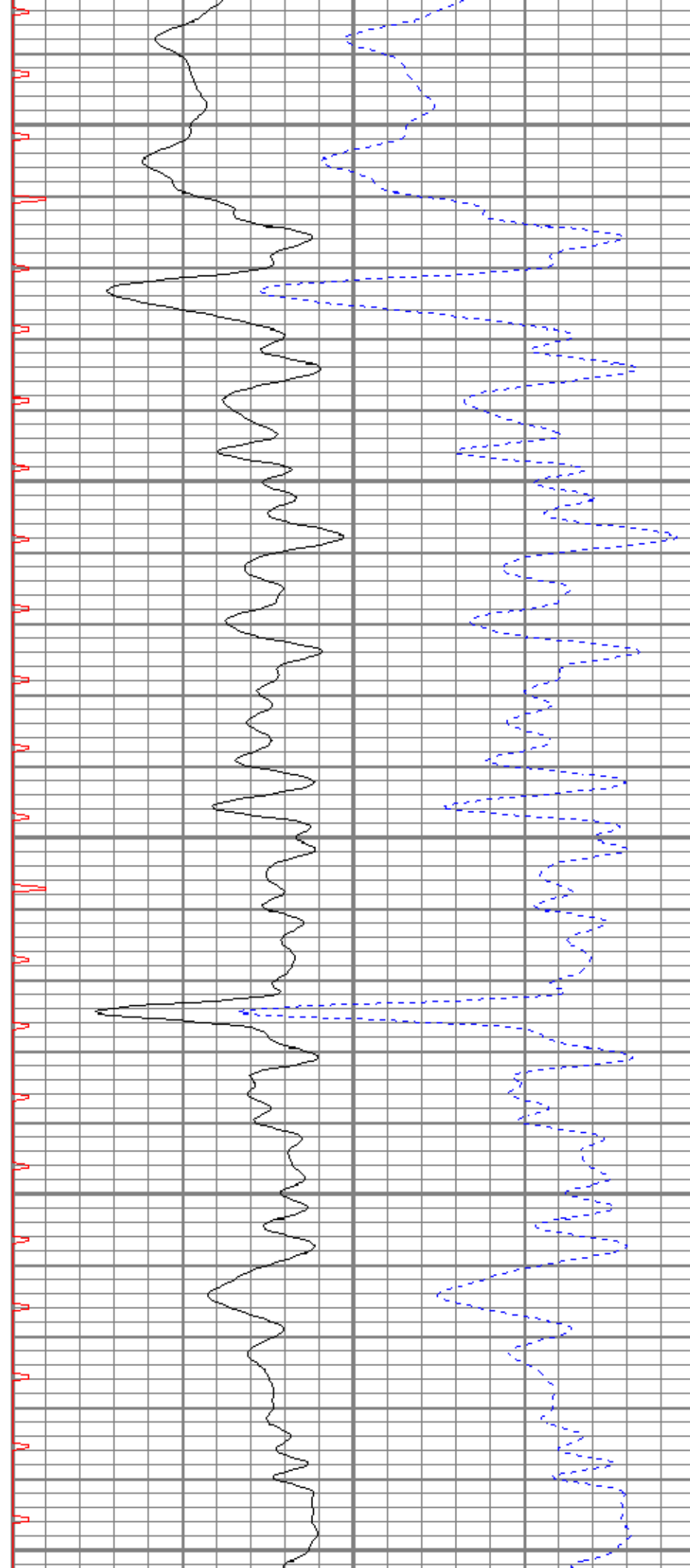
1600

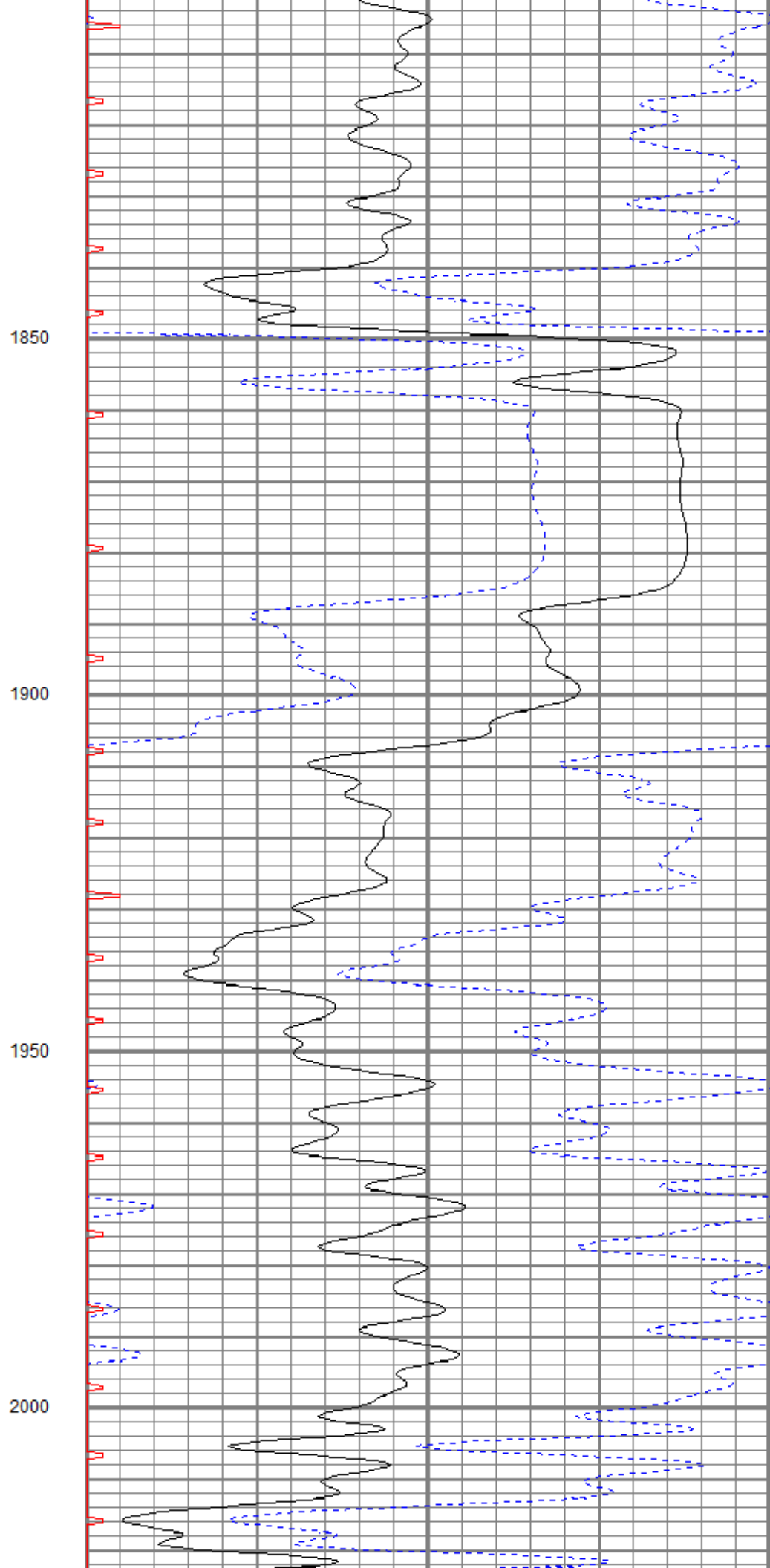
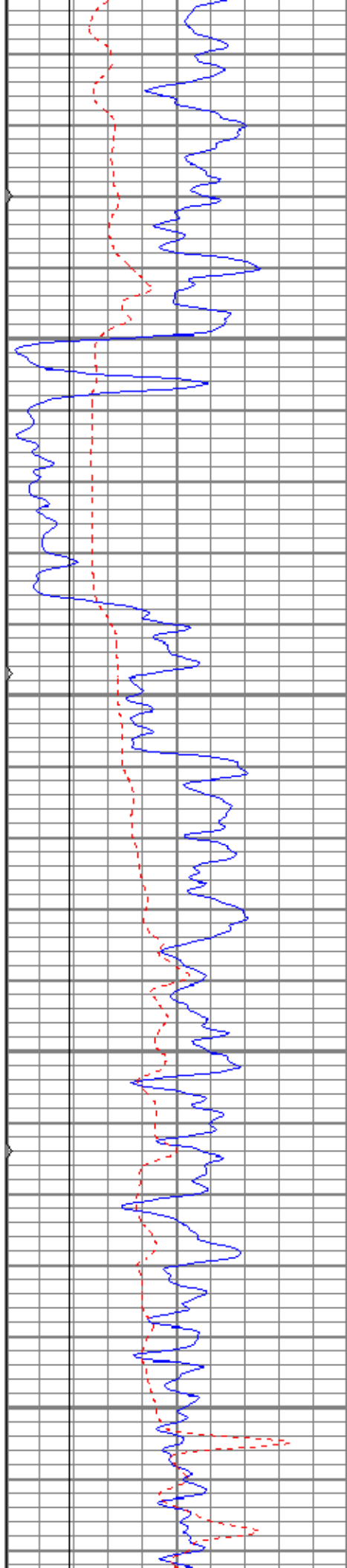
1650

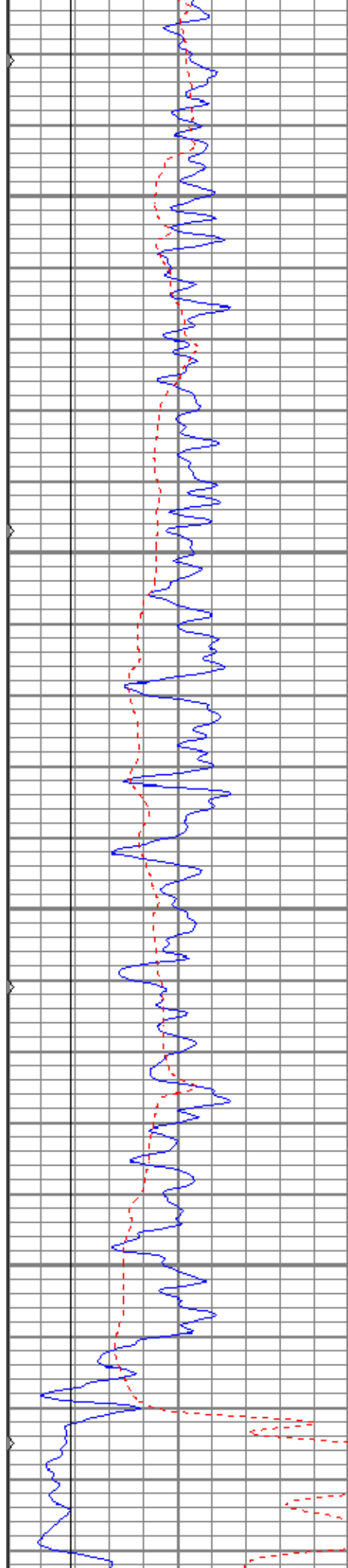
1700

1750

1800





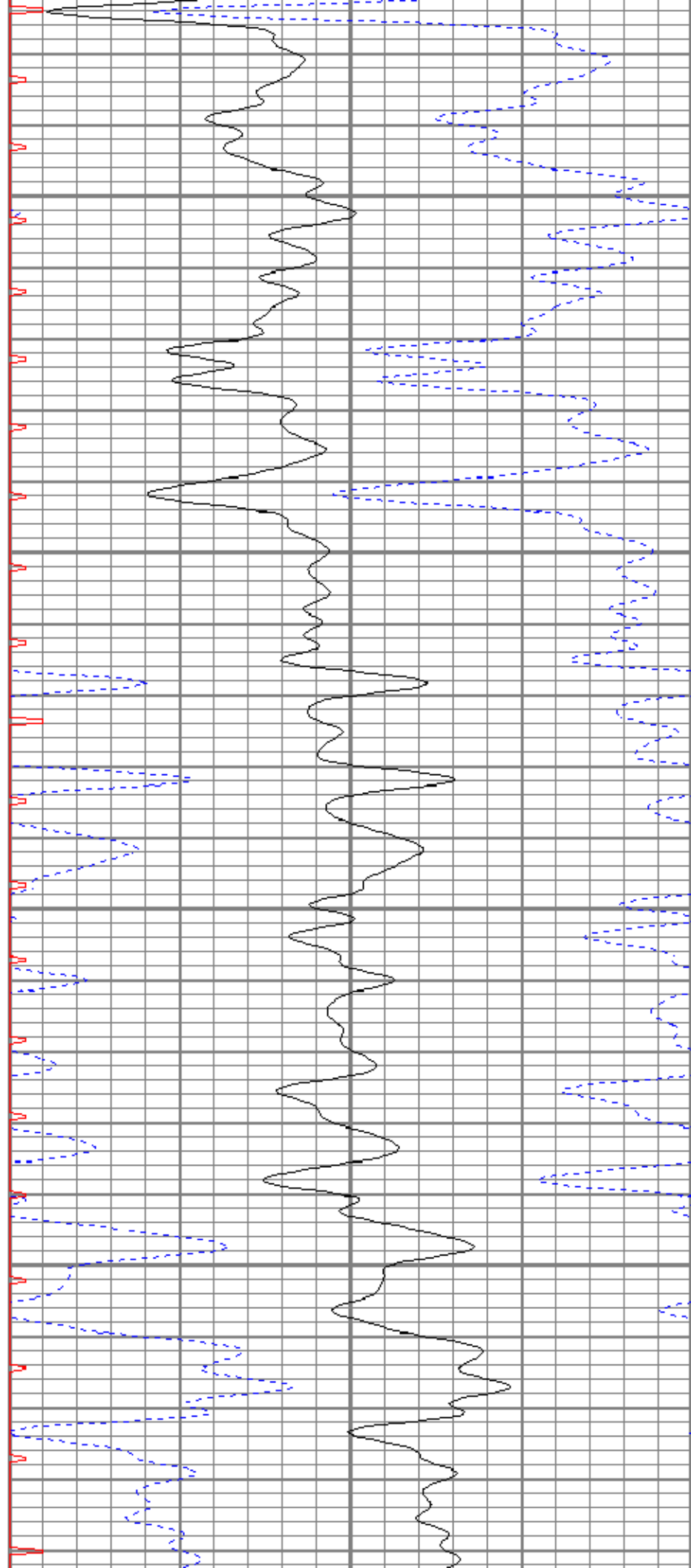


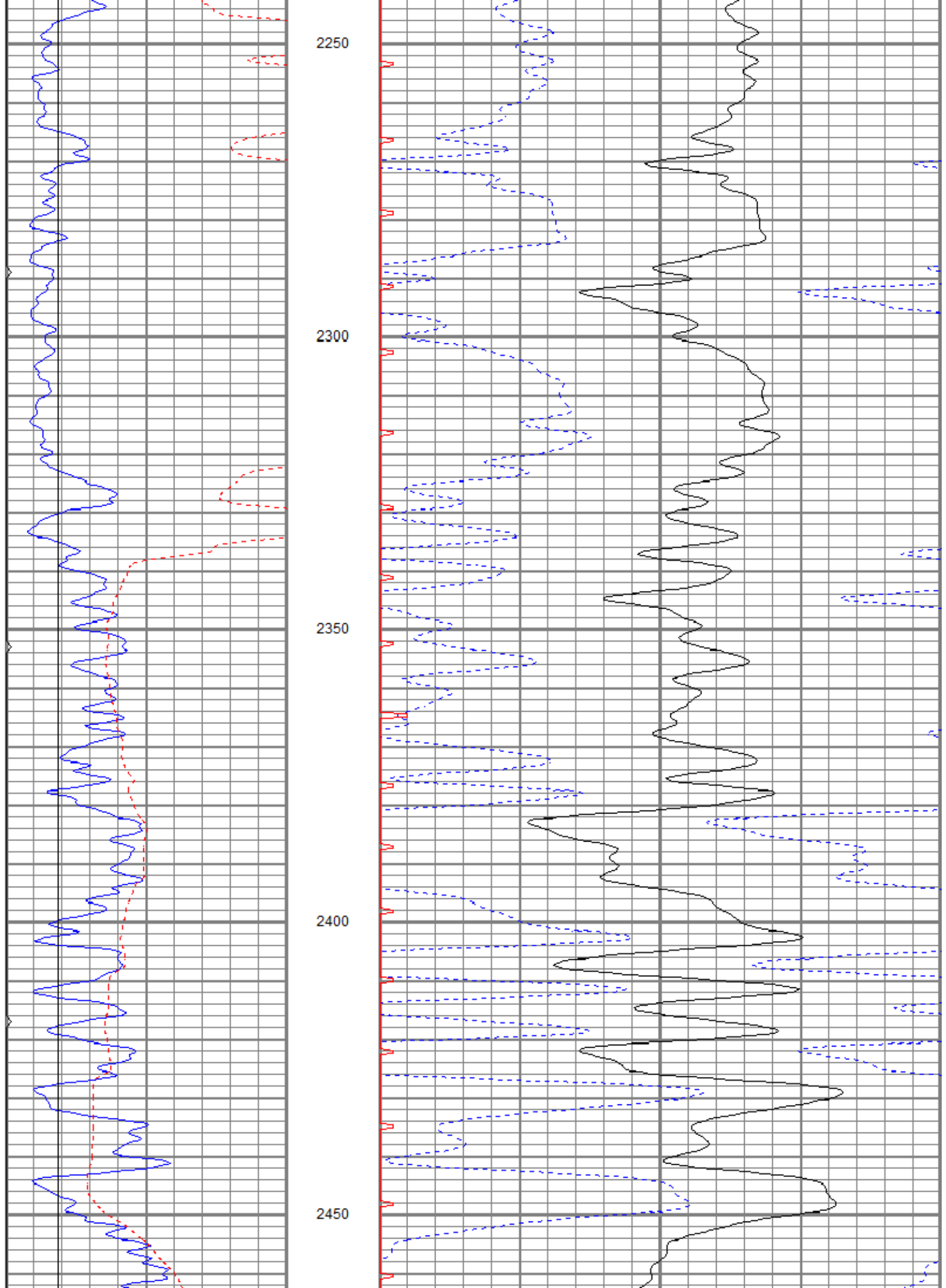
2050

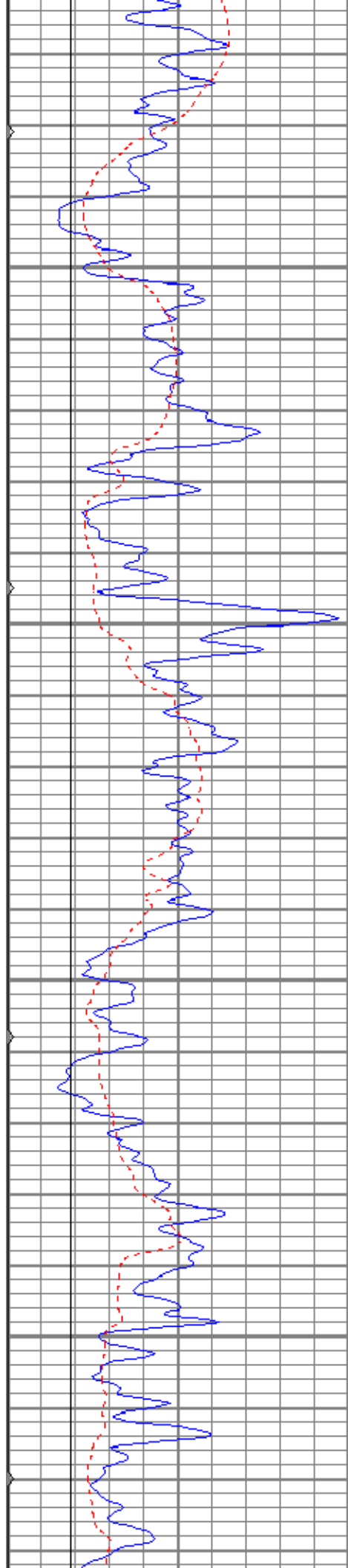
2100

2150

2200





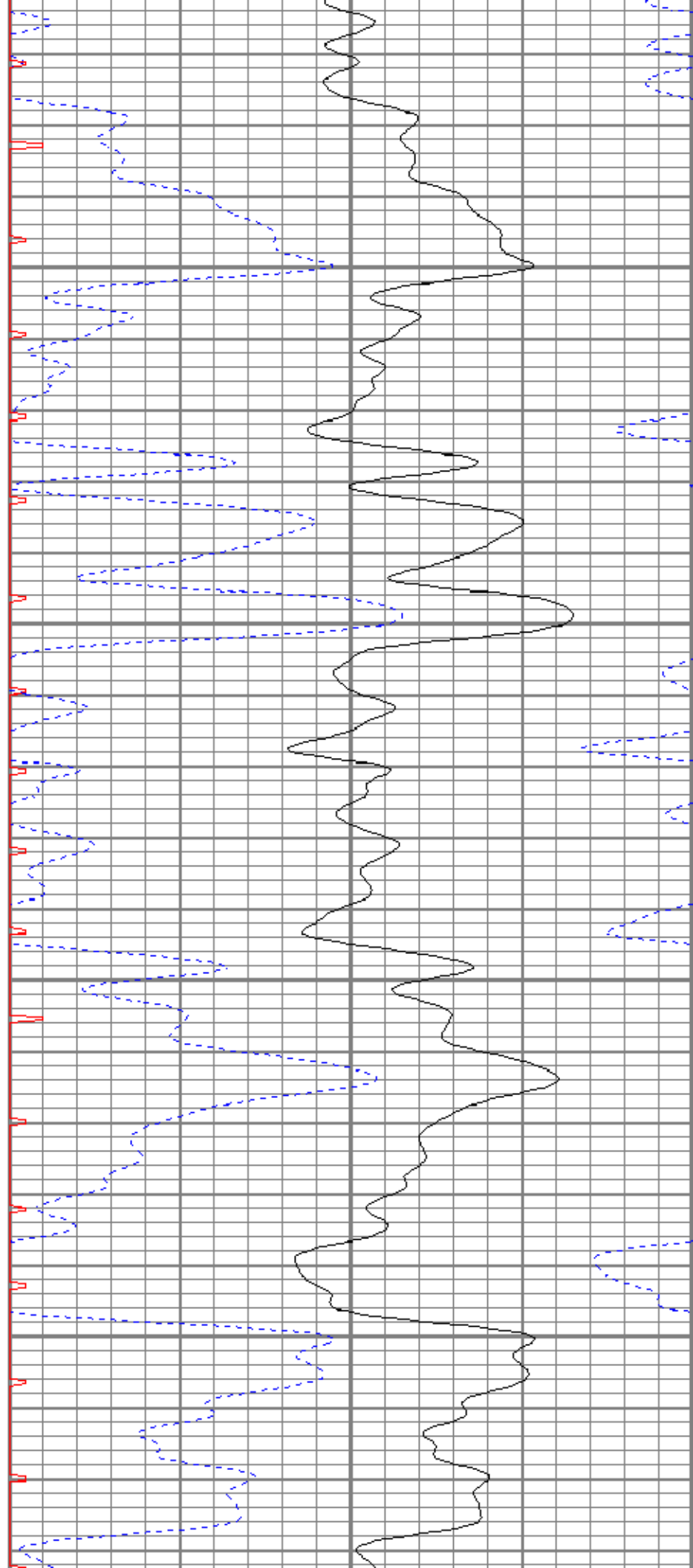


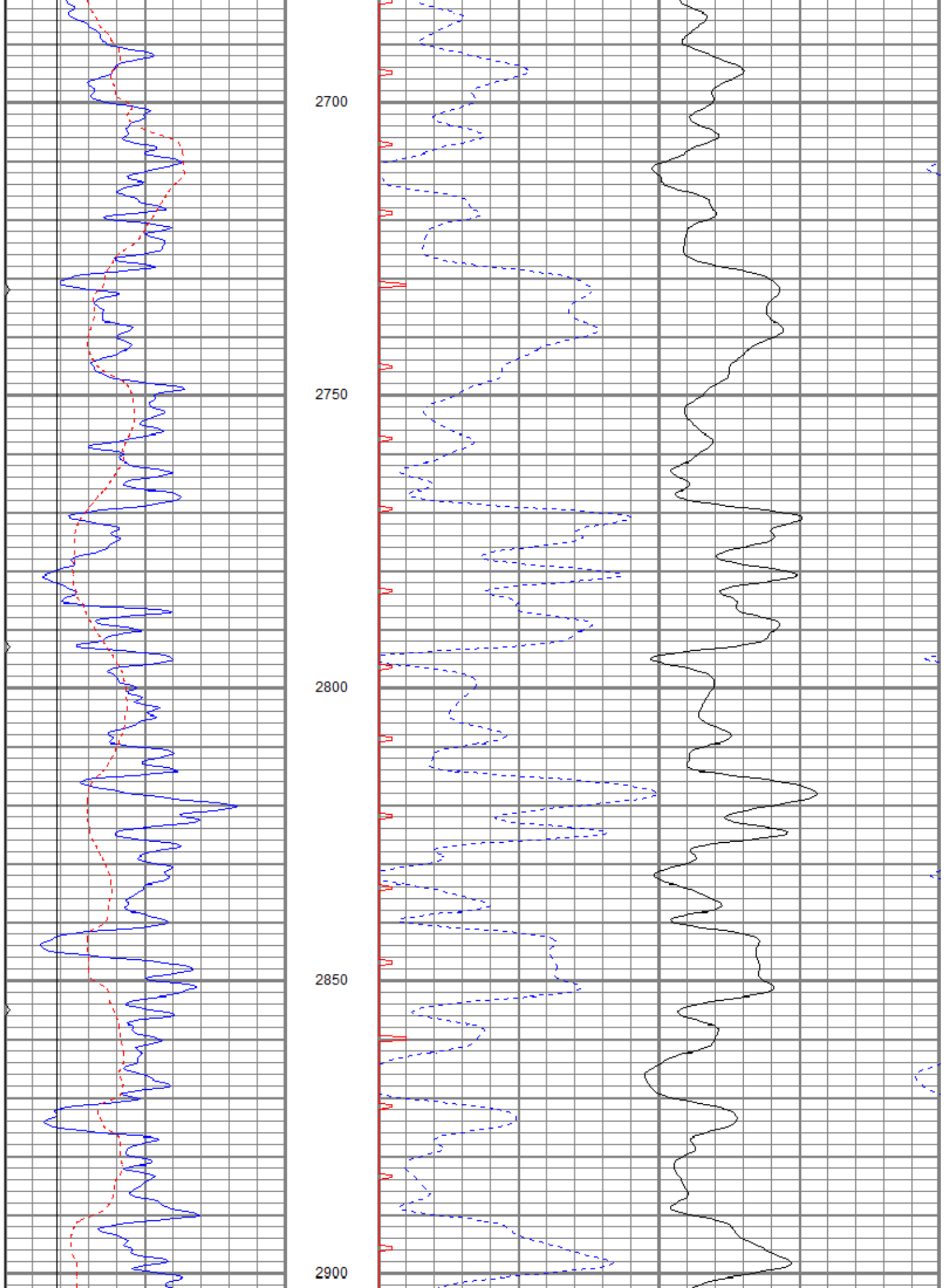
2500

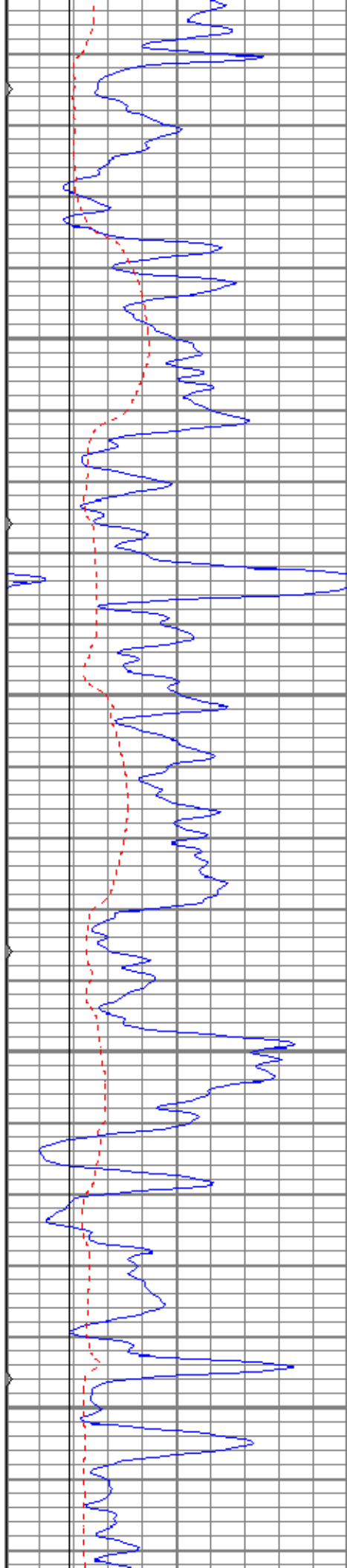
2550

2600

2650





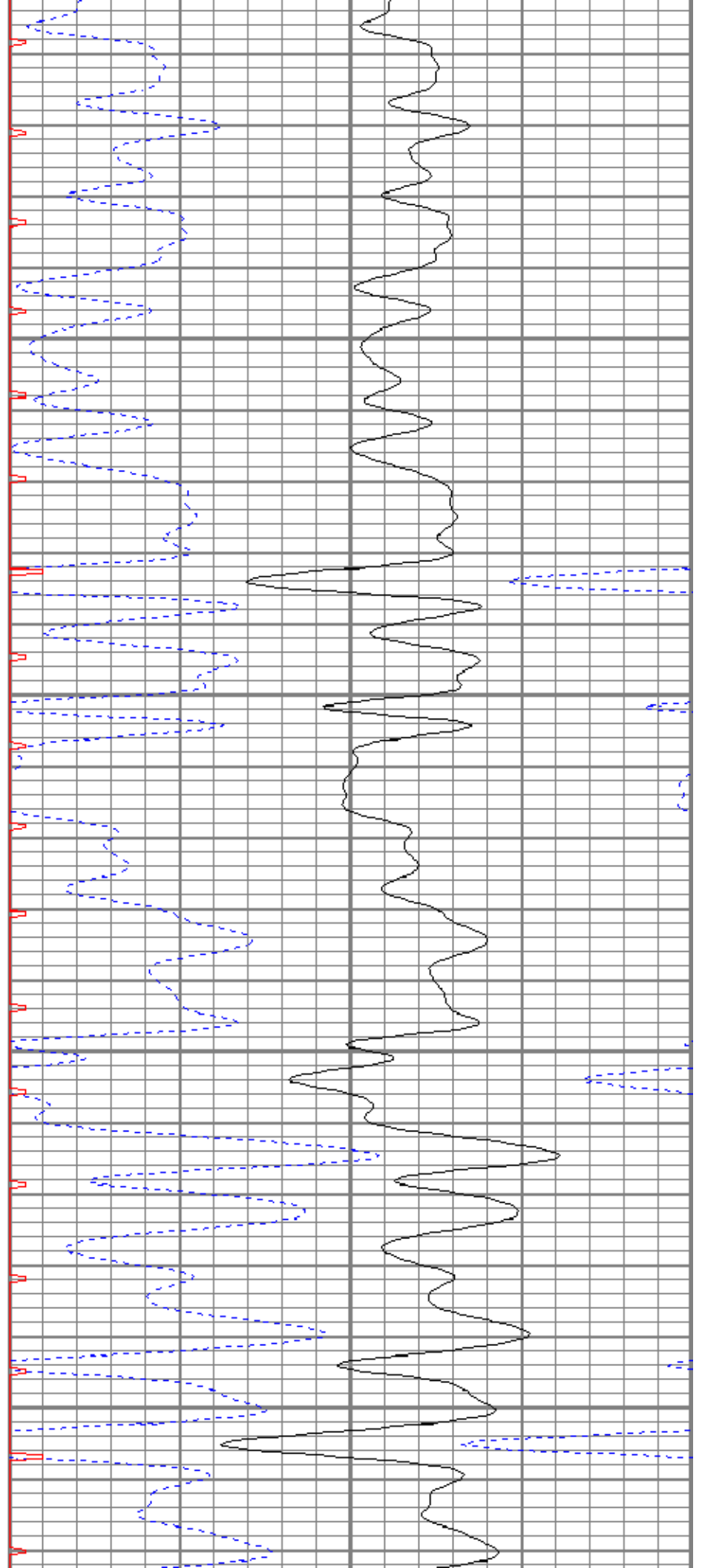


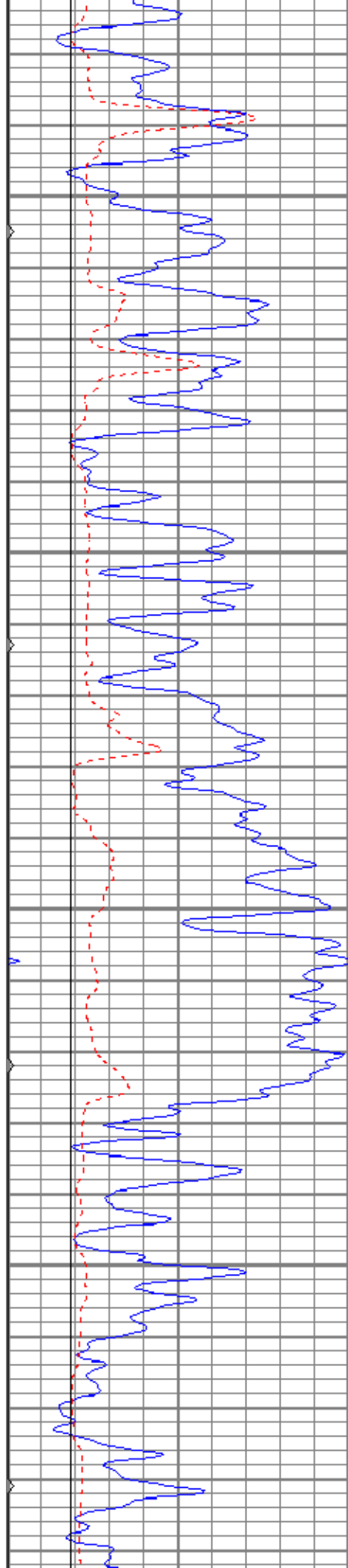
2950

3000

3050

3100



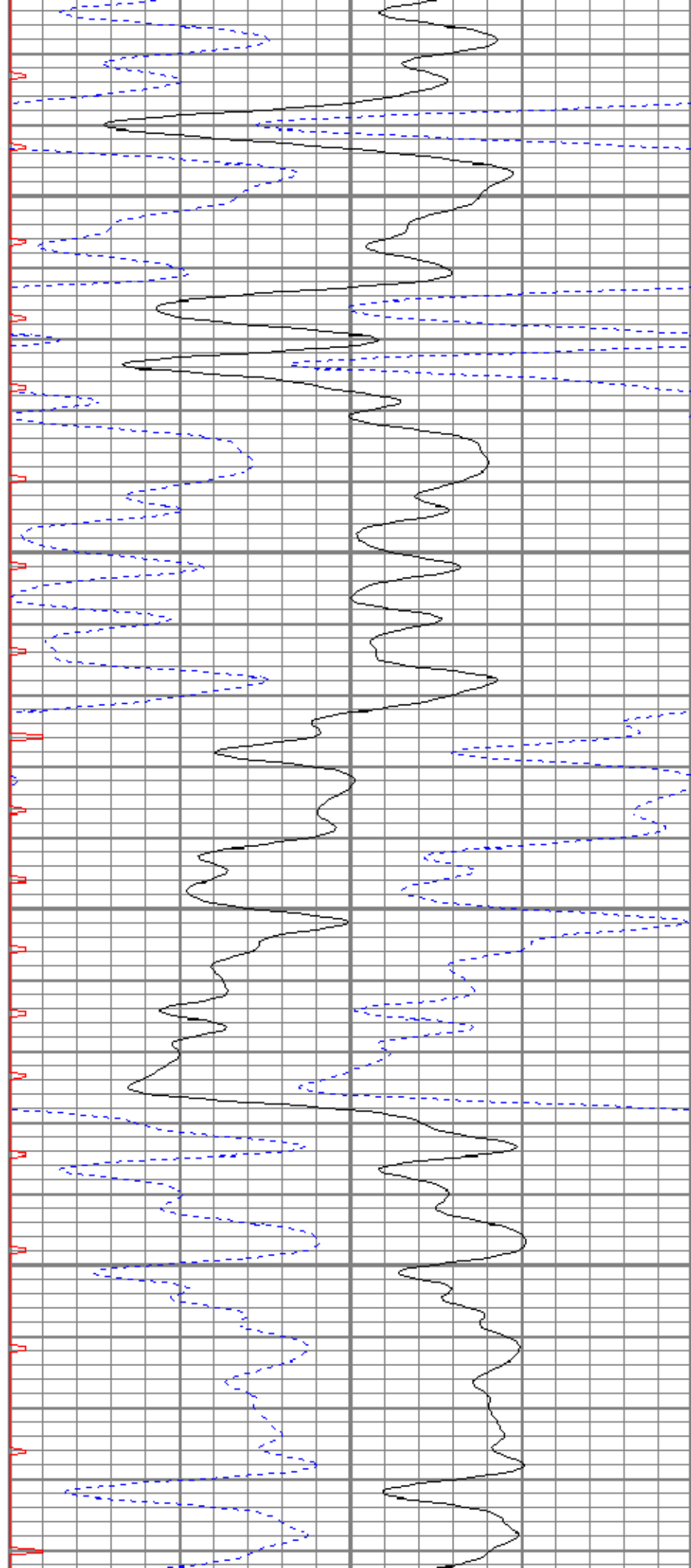


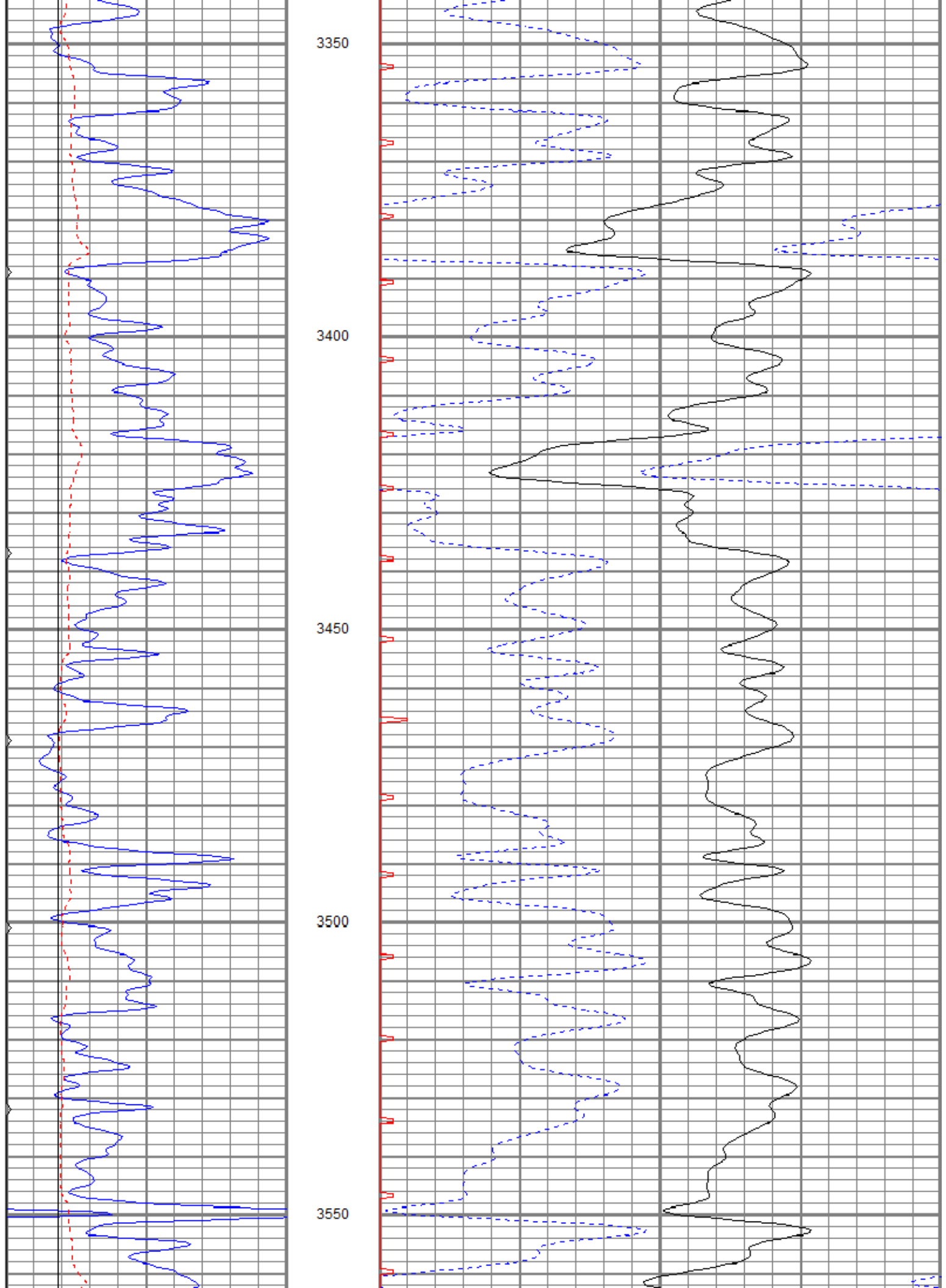
3150

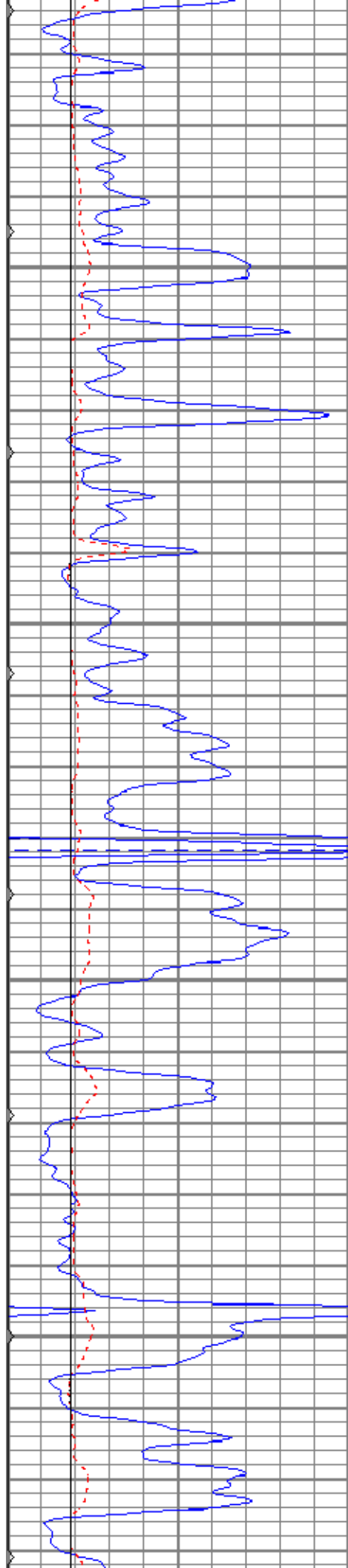
3200

3250

3300





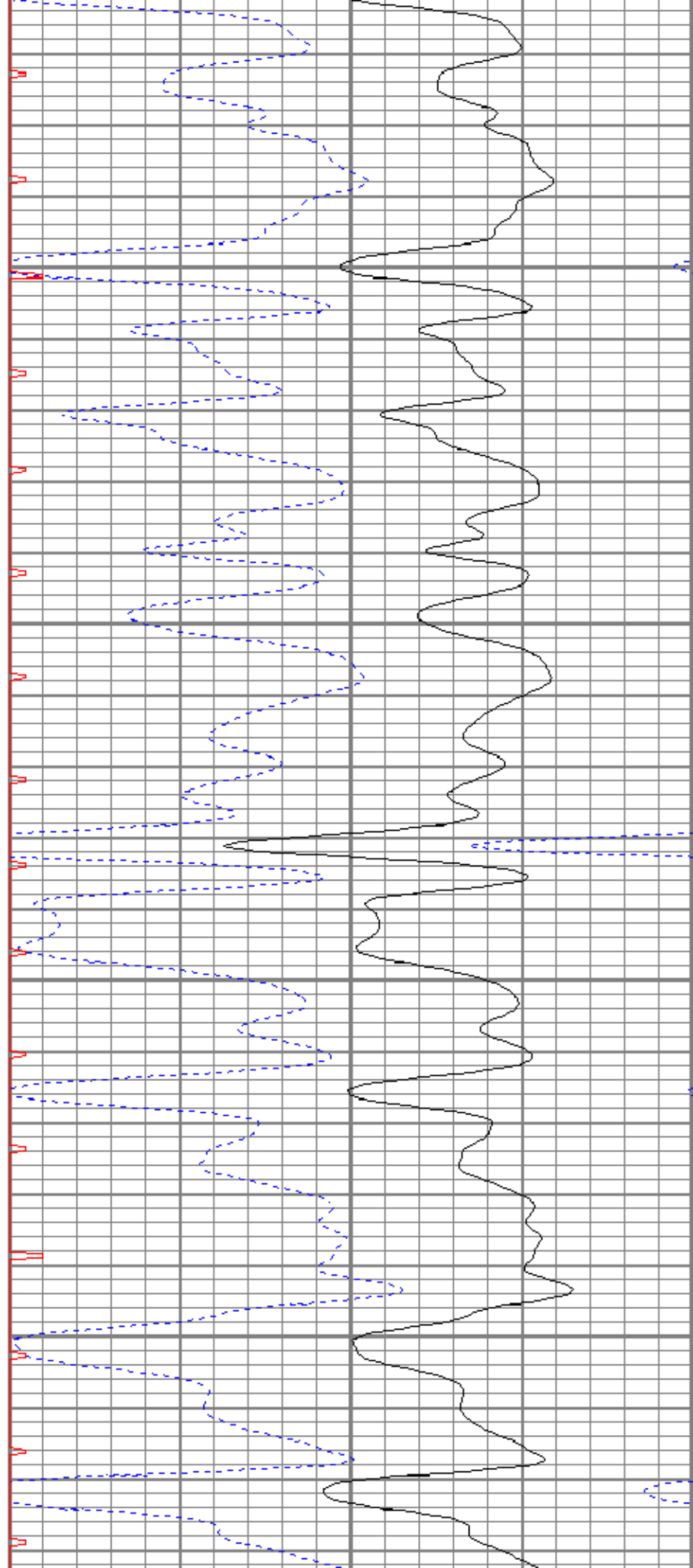


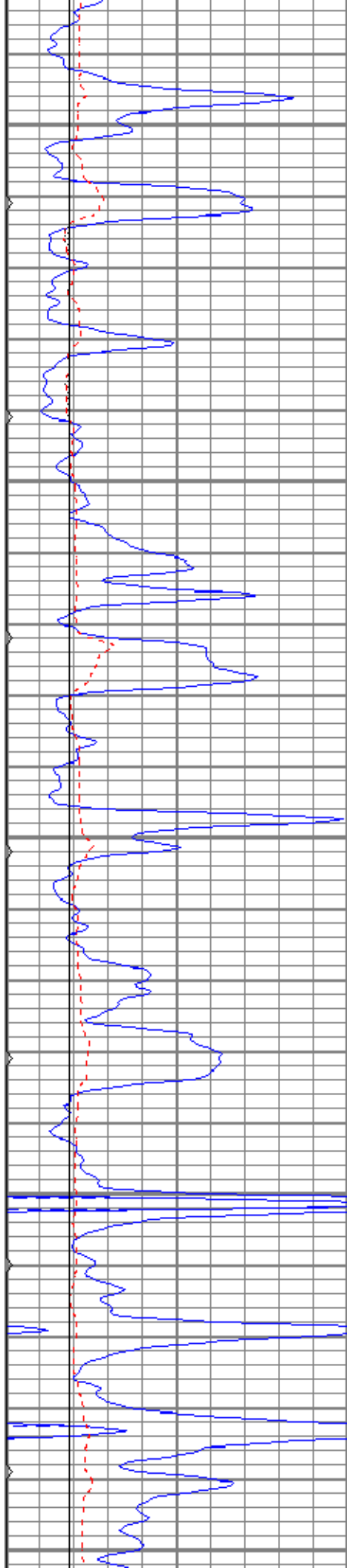
3600

3650

3700

3750





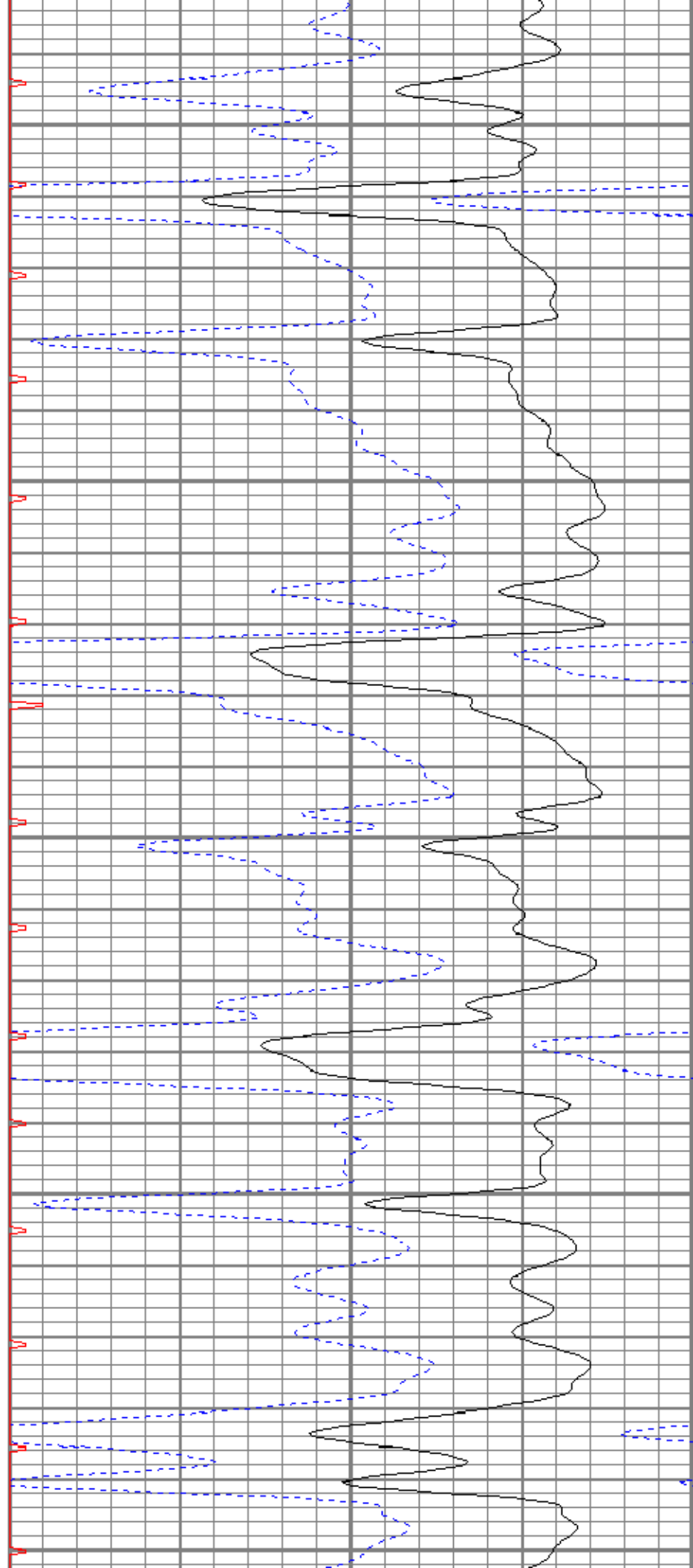
3800

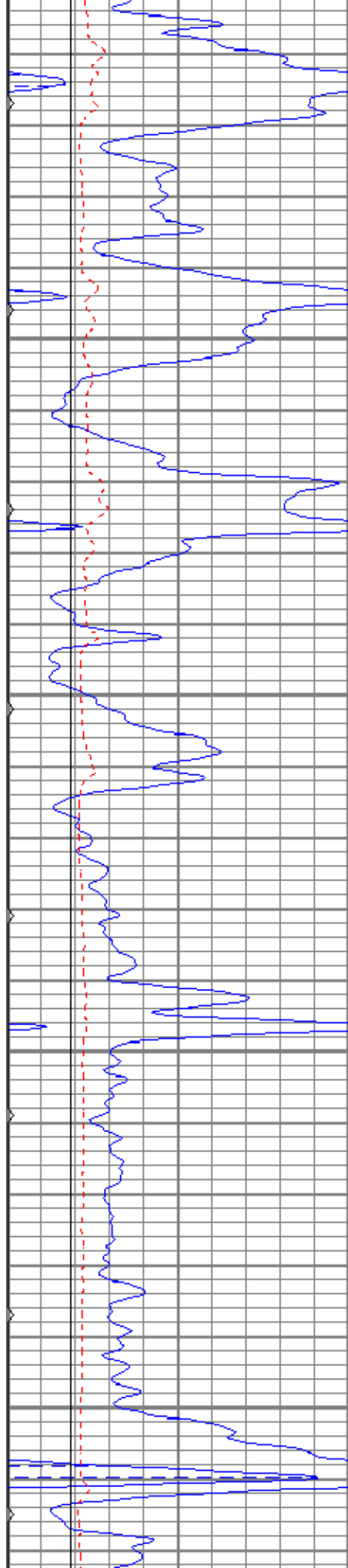
3850

3900

3950

4000



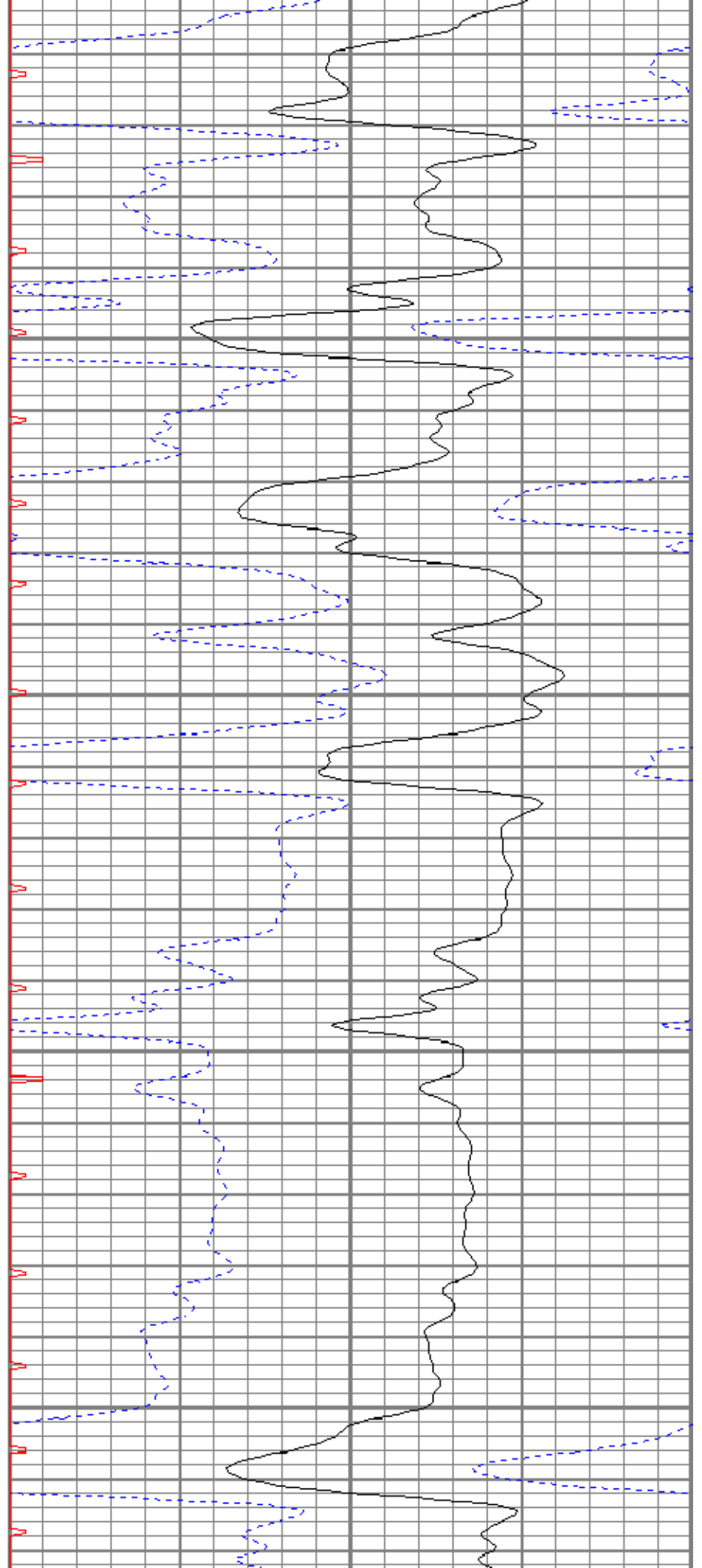


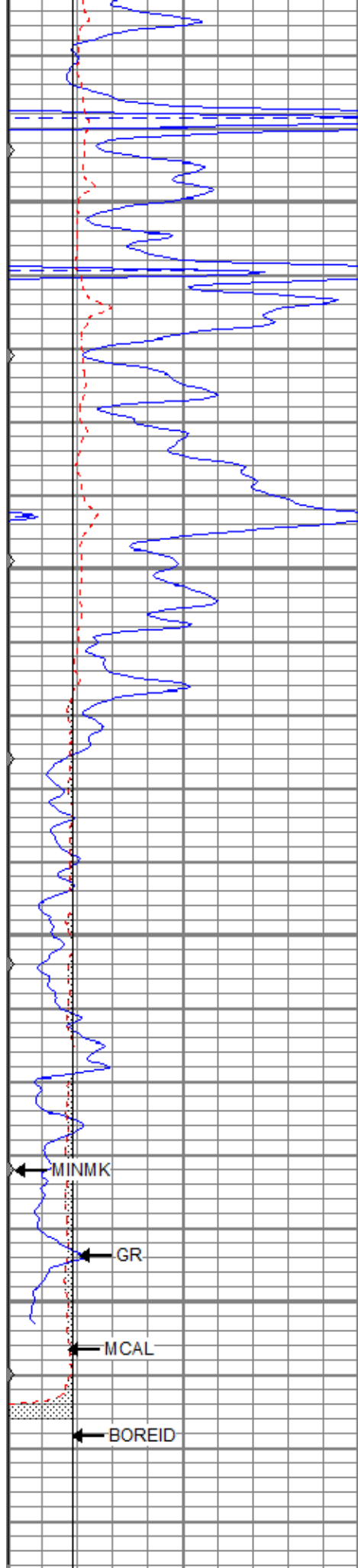
4050

4100

4150

4200



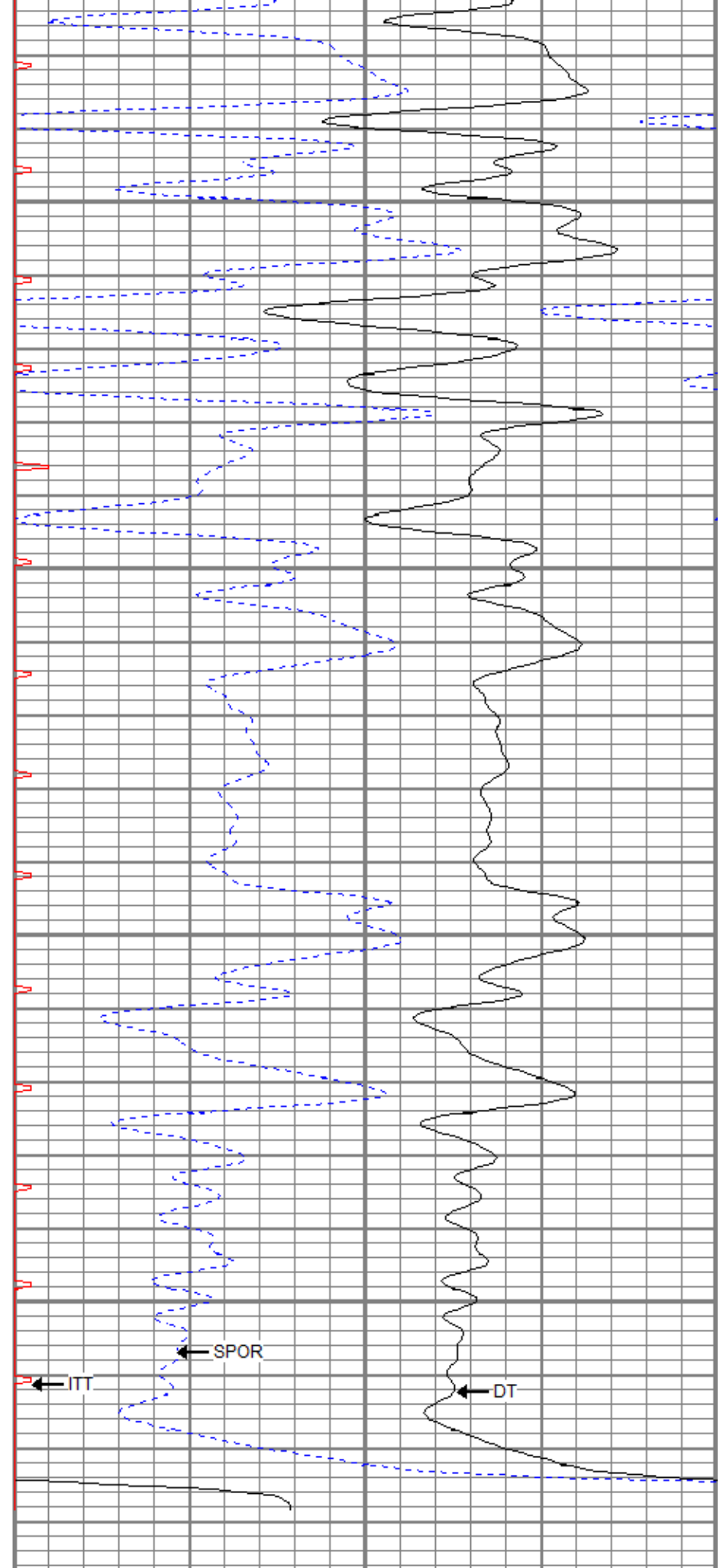


4250

4300

4350

4400



| | | |
|---|-----------|-----|
| 0 | GR (GAPI) | 150 |
| 6 | MCAL (in) | 10 |

| | | |
|-----|--------------|----|
| 140 | DT (usec/ft) | 40 |
| 20 | SPOR (sec) | 10 |

| | | |
|---|-------------|----|
| 0 | MCAL (in) | 16 |
| 6 | BOREID (in) | 16 |
| 0 | MINMK | 50 |

| | | |
|----|------------|-----|
| 30 | SPOR (pu) | -10 |
| 0 | ITT (msec) | 20 |

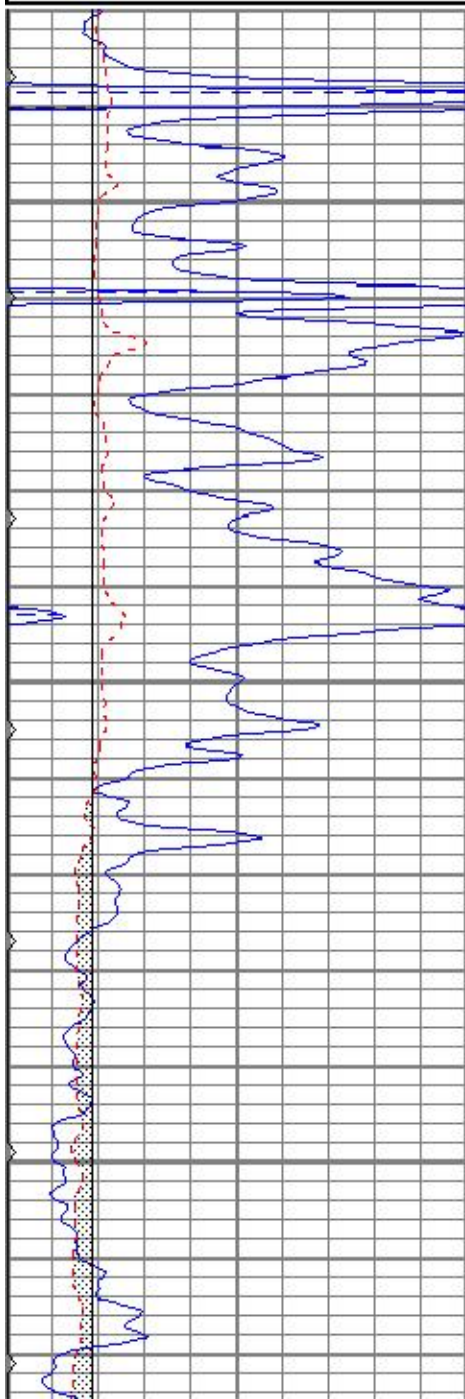


REPEAT SECTION

Database File pp18-3#1oh.db
 Dataset Pathname pass3.1
 Presentation Format kbcs
 Dataset Creation Fri Jul 06 00:06:32 2018
 Charted by Depth in Feet scaled 1:240

| | | |
|---|-------------|-----|
| 0 | GR (GAPI) | 150 |
| 6 | MCAL (in) | 16 |
| 6 | BOREID (in) | 16 |
| 0 | MINMK | 50 |

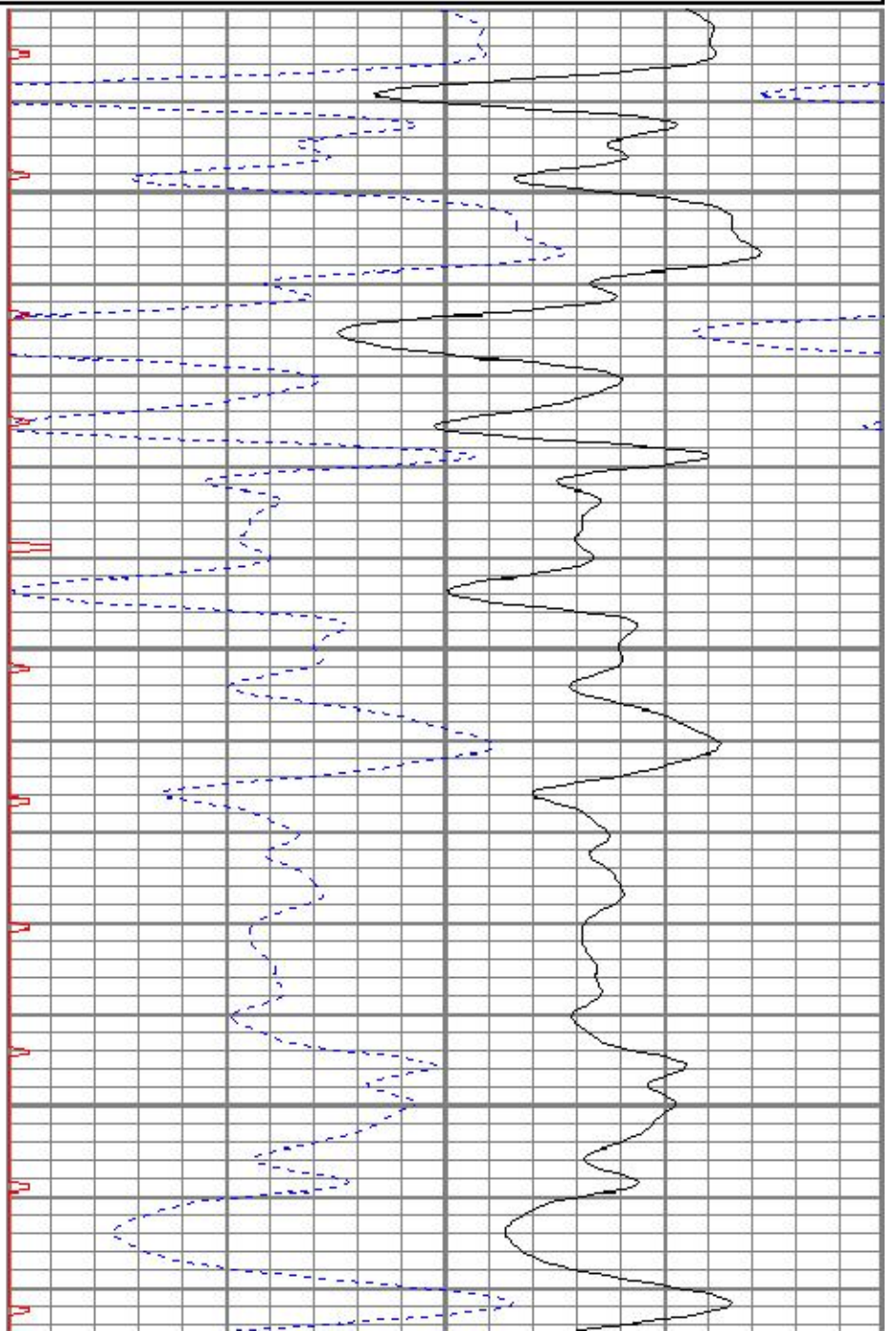
| | | |
|-----|--------------|-----|
| 140 | DT (usec/ft) | 40 |
| 30 | SPOR (pu) | -10 |
| 0 | ITT (msec) | 20 |

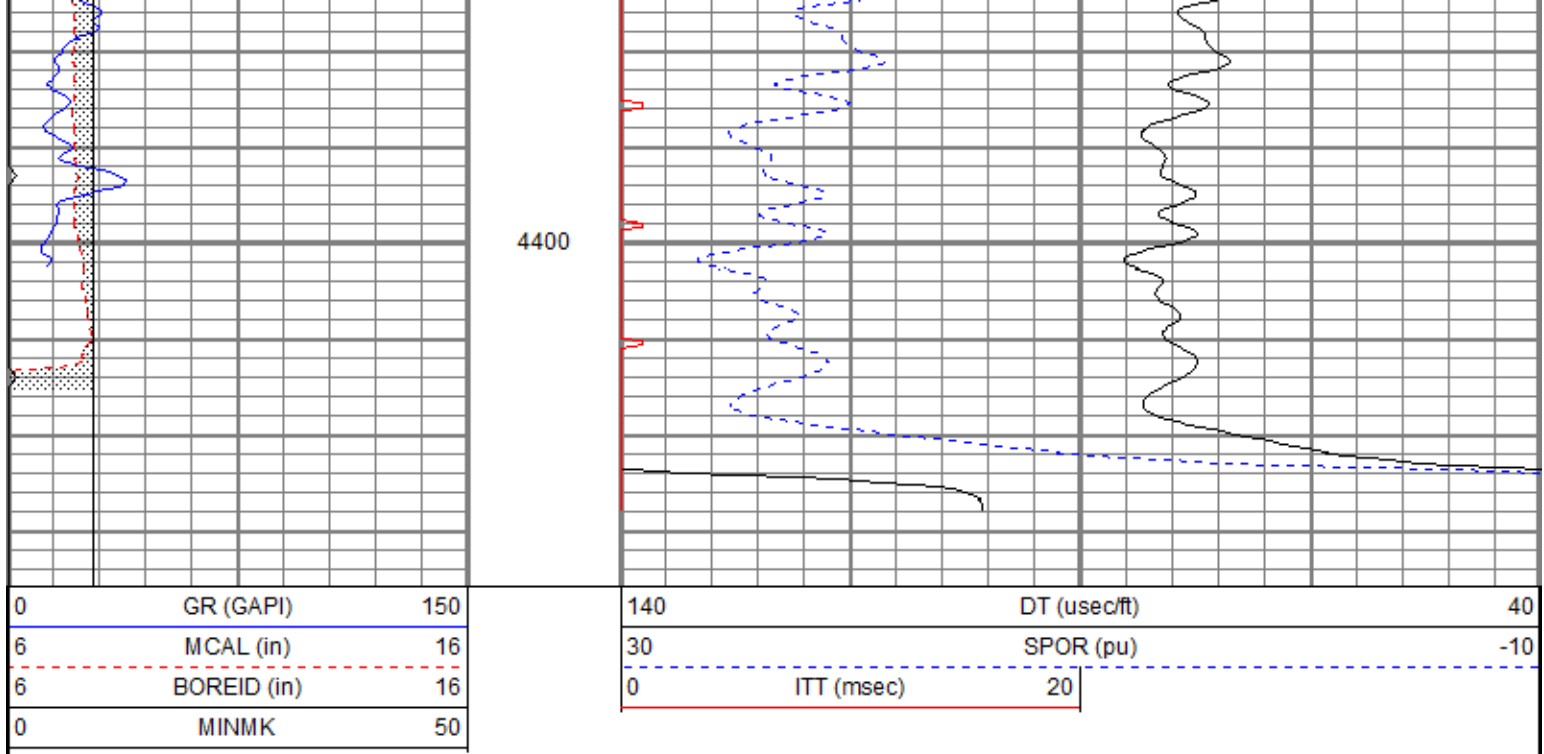


4250

4300

4350





Calibration Report

Database File pp18-3#1oh.db
 Dataset Pathname pass4
 Dataset Creation Thu Jul 05 23:40:28 2018

Microlog Calibration Report

Serial-Model: 9151-Gerhart
 Performed: Thu Jul 05 23:21:07 2018

| | Readings | | | References | | | Results | |
|---------|----------|--------|---|------------|---------|-------|---------|--------|
| | Zero | Cal | | Zero | Cal | | m | b |
| Normal | -0.2657 | 0.4803 | V | 0.0000 | 10.0000 | Ohm-m | 13.4055 | 3.5618 |
| Inverse | -0.1847 | 0.6297 | V | 0.0000 | 10.0000 | Ohm-m | 12.2788 | 2.2684 |
| Caliper | 0.9710 | 1.9556 | V | 7.2000 | 13.5000 | in | 6.3984 | 0.9875 |

Gamma Ray Calibration Report

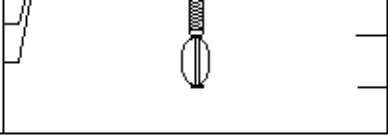
Serial Number: 2001
 Tool Model: OH
 Performed: Sun Nov 12 16:26:41 2017

Calibrator Value: 1.0 GAPI

Background Reading: 0.0 cps
 Calibrator Reading: 1.0 cps

Sensitivity: 0.7000 GAPI/cps

| Sensor | Offset (ft) | Schematic | Description | Length (ft) | O.D. (in) | Weight (lb) |
|--------|-------------|-----------|------------------------------------|-------------|-----------|-------------|
| GR | 30.83 | | CHD-STD | 0.50 | 1.69 | 1.00 |
| | | | GR-OH (2001) 2001 | 3.56 | 3.25 | 40.00 |
| MCAL | 22.04 | | ML-Gerhart (9151) Gerhart Micro | 9.46 | 4.00 | 125.00 |
| MI | 22.04 | | | | | |
| MN | 22.04 | | | | | |
| WVF4 | 14.25 | | SLT-G (372) Sonic | 15.71 | 3.50 | 250.00 |
| WVF3 | 13.25 | | | | | |

| | | | | | | |
|---|-------|---|---|------|------|-------|
| WVF2 | 10.25 |  | CENT-OHlong Open Hole long Centralizer | 4.50 | 3.50 | 50.00 |
| WVF1 | 9.25 | | | | | |
| Dataset: pp18-3#1oh.db: field/well/run1/pass4 Total length: 33.73 ft Total weight: 466.00 lb O.D.: 4.00 in | | | | | | |