



**DUAL
INDUCTION
LOG**

Company Palomino Petroleum
 Well Herman #1
 Field Prairie Ridge Northwest
 County Lane
 State Kansas

Company Palomino Petroleum
 Well Herman #1
 Field Prairie Ridge Northwest
 County Lane State Kansas

Location: 1345' FNL & 715' FEL
 API #: 15 101 22608
 SEC 11 TWP 16S RGE 27W
 Permanent Datum Ground Level Elevation 2593'
 Log Measured From KB 14' AGL
 Drilling Measured From KB
 Other Services
 CDNL
 ML
 Elevation
 K.B. 2607'
 D.F. 2606'
 G.L. 2593'

Date	6-30-18
Run Number	One
Depth Driller	4592'
Depth Logger	4591'
Bottom Logged Interval	4589'
Top Log Interval	210'
Casing Driller	8 5/8" @ 224'
Casing Logger	224'
Bit Size	7 7/8"
Type Fluid in Hole	Chemical
Density / Viscosity	9.1/58
PH / Fluid Loss	10.5/6.2
Source of Sample	Pit
Rm @ Meas. Temp	1.8@88degf
Rmf @ Meas. Temp	1.44@88degf
Rmc @ Meas. Temp	2.3@88degf
Source of Rmf / Rmc	Calculated
Rm @ BHT	1.3@120degf
Time Circulation Stopped	5:15 p.m
Time Logger on Bottom	8:10 p.m
Maximum Recorded Temperature	120degf
Equipment Number	T-127
Location	Hays, KS
Recorded By	C.Patterson
Witnessed By	Mr. Ryan Seib

<<< Fold Here >>>

All interpretations are opinions based on inferences from electrical or other measurements and we cannot and do not guarantee the accuracy or correctness of any interpretation, and we shall not, except in the case of gross or willful negligence on our part, be liable or responsible for any loss, costs, damages, or expenses incurred or sustained by anyone resulting from any interpretation made by any of our officers, agents or employees. These interpretations are also subject to our general terms and conditions set out in our current Price Schedule.

Comments

West side of Utica 5 mi. to Wichita Rd.,
 North on Wichita Rd. 2.5 mi. Into Location

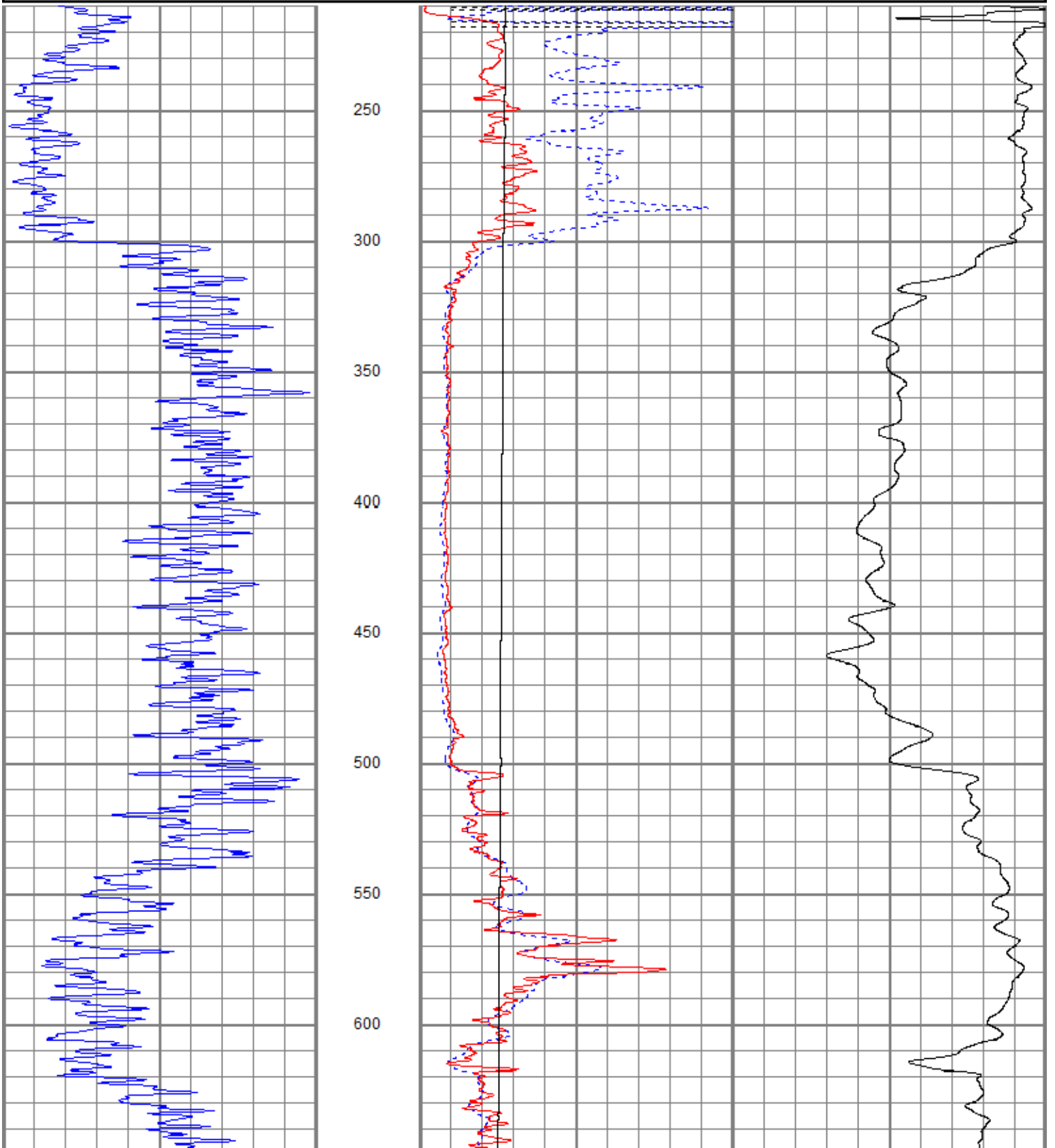
Thanks for using Gemini Wireline LLC
 785-625-1182

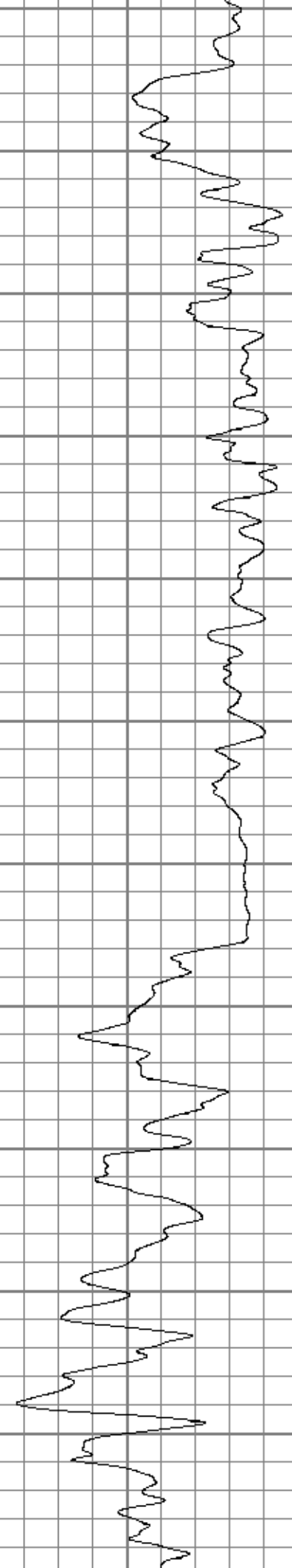
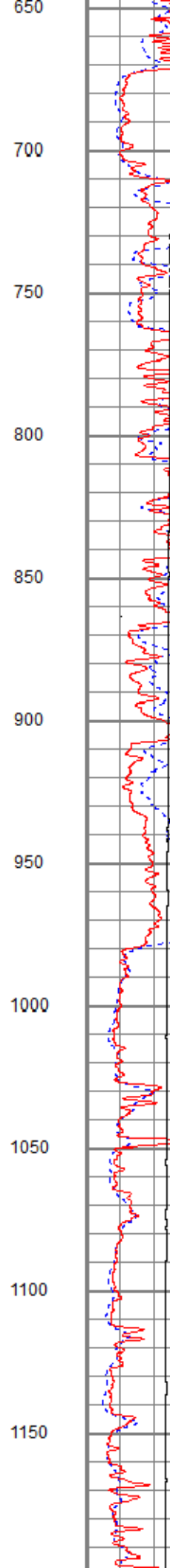
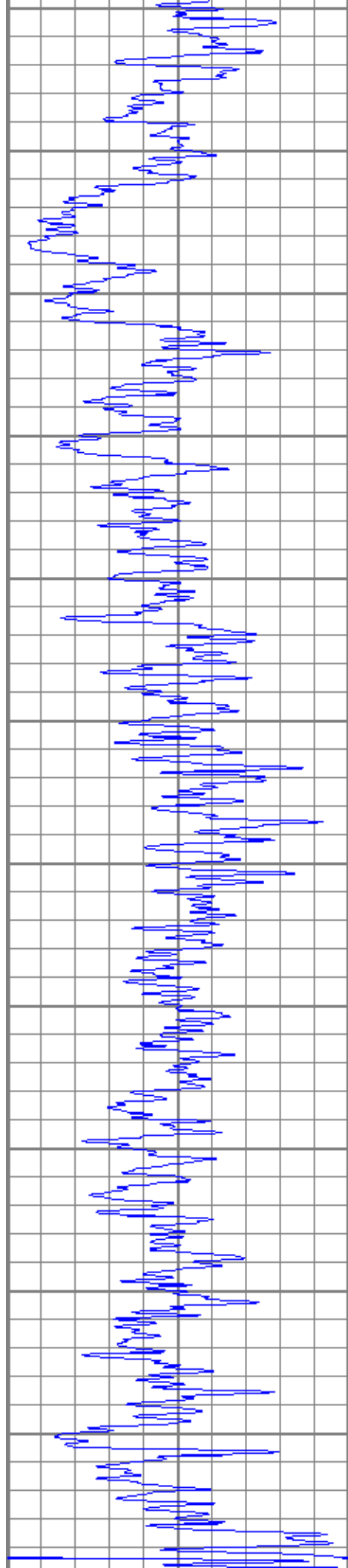


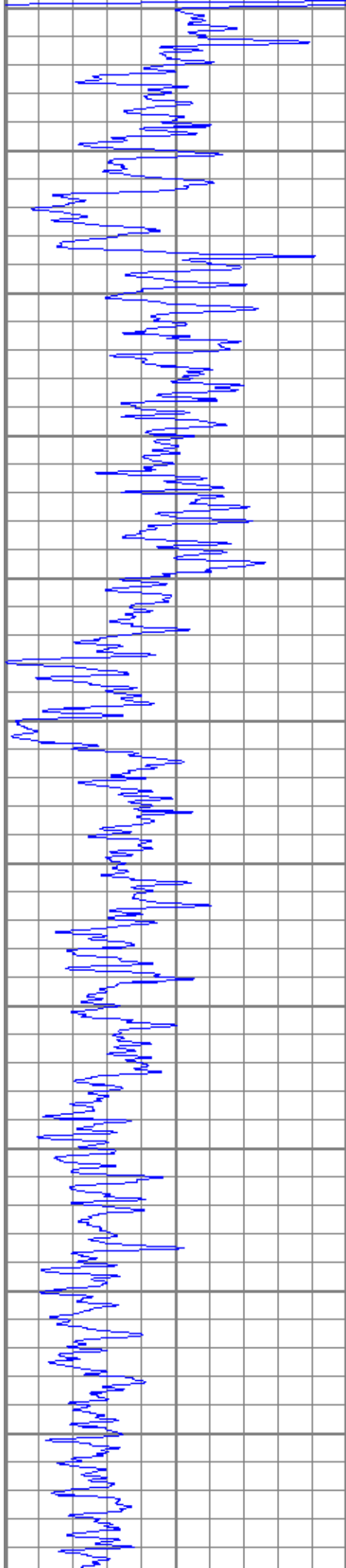
MAIN PASS

Database File ppherman#1oh.db
 Dataset Pathname pass3
 Presentation Format kdillinn
 Dataset Creation Sat Jun 30 20:36:20 2018
 Charted by Depth in Feet scaled 1:600

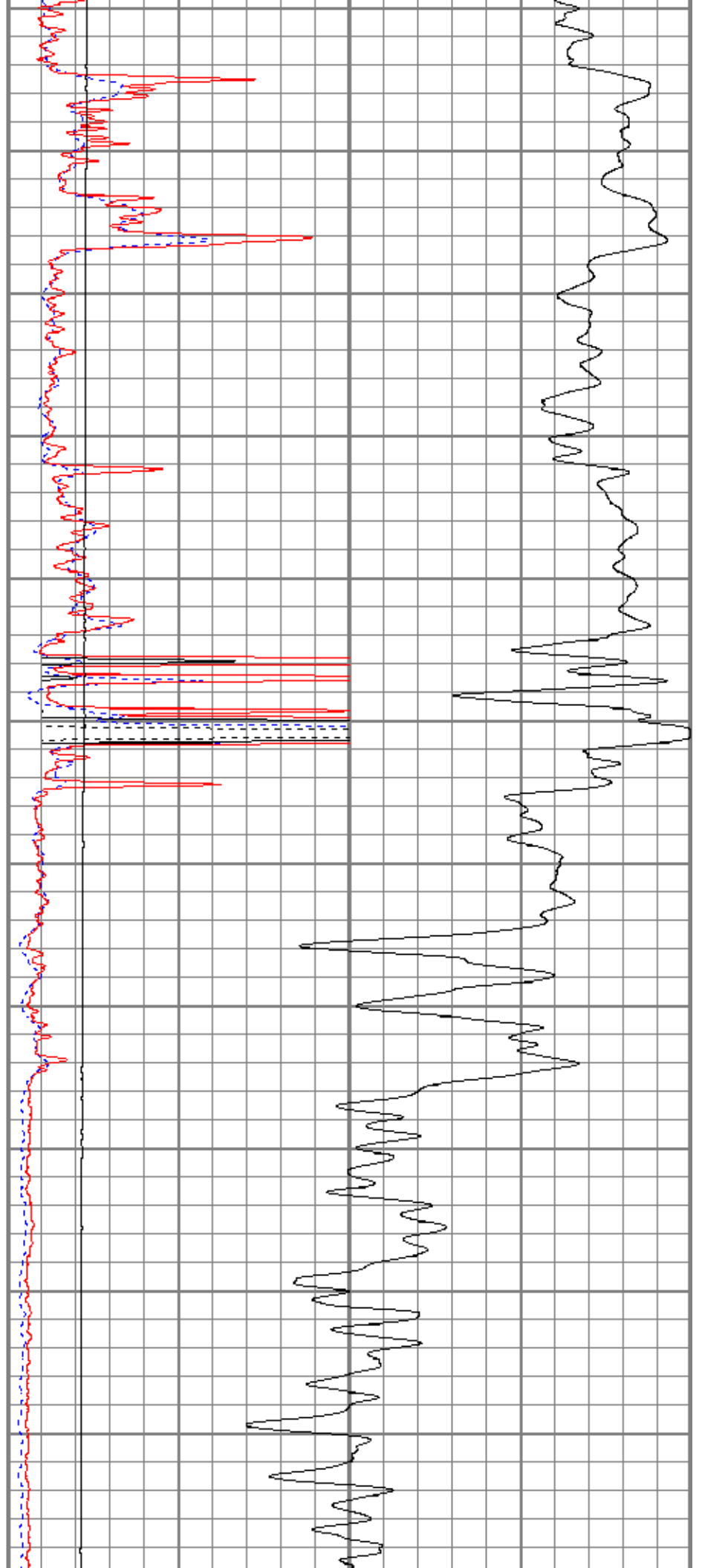
0	GR (GAPI)	150	1000	CILD (mmho/m)	0
			10000	LTEN (lb)	0
0	RILD (Ohm-m)	50			
0	RLL3 (Ohm-m)	50			
50	RILD x 10 (Ohm-m)	500			
50	RLL3 x 10 (Ohm-m)	500			

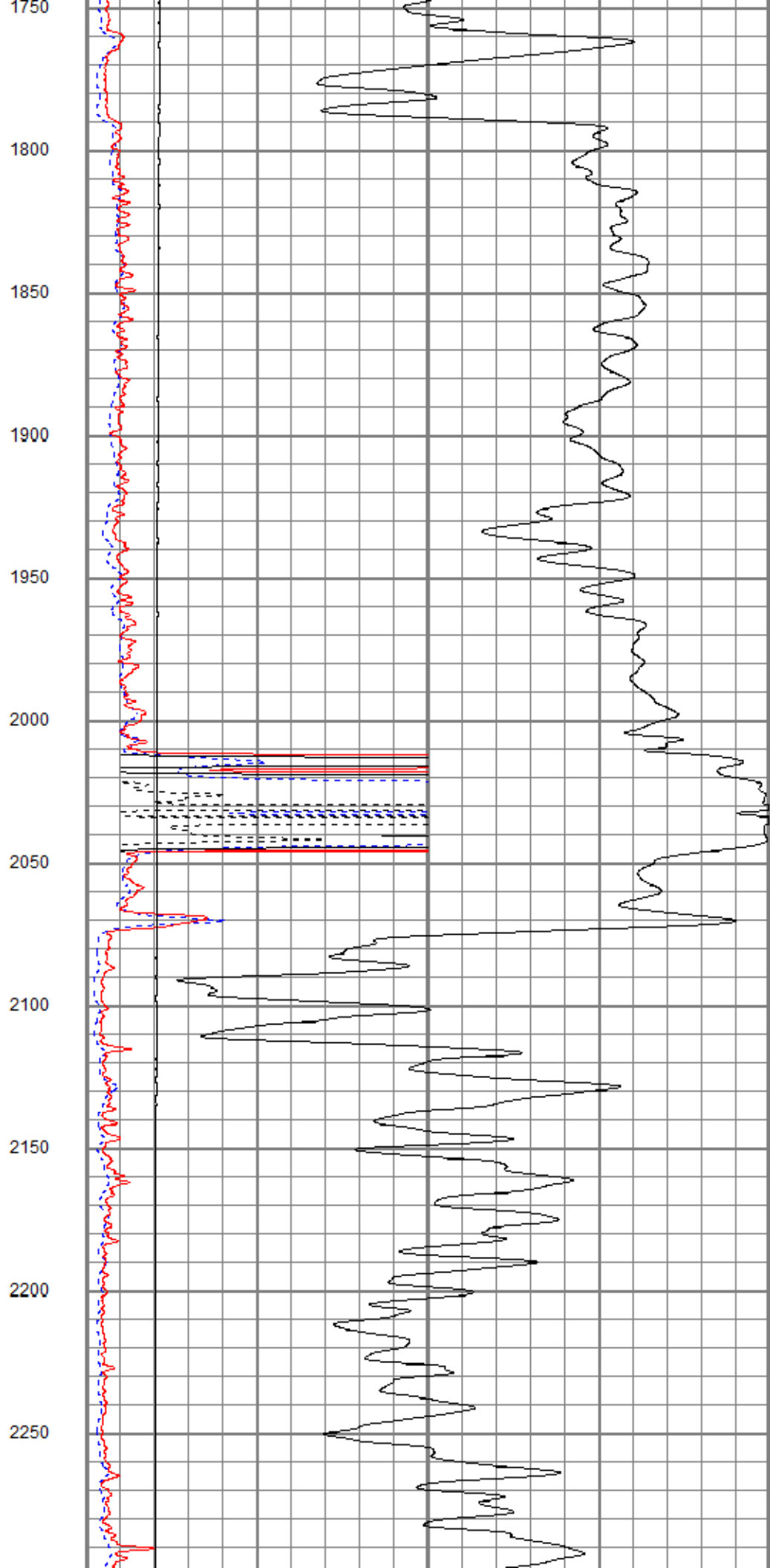
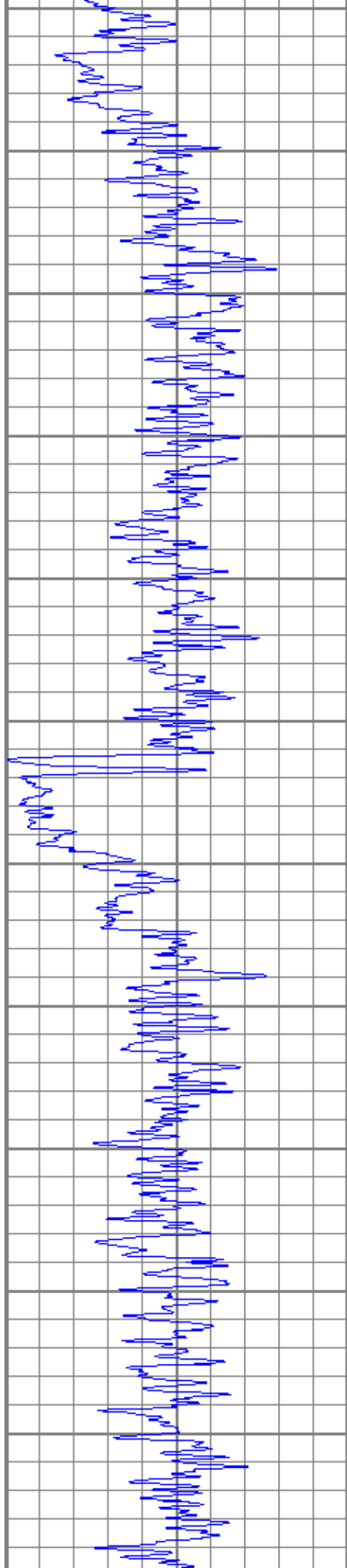


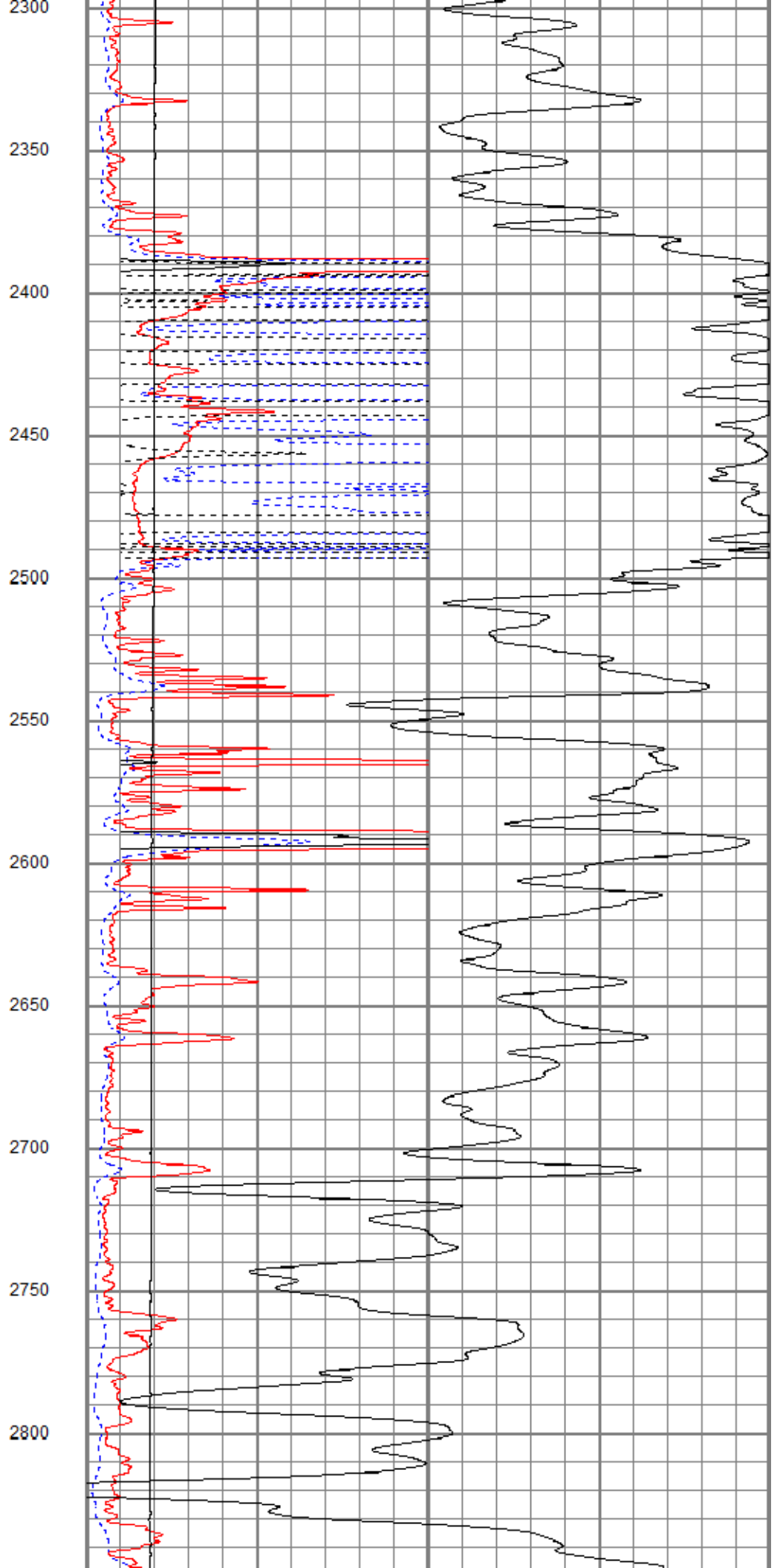
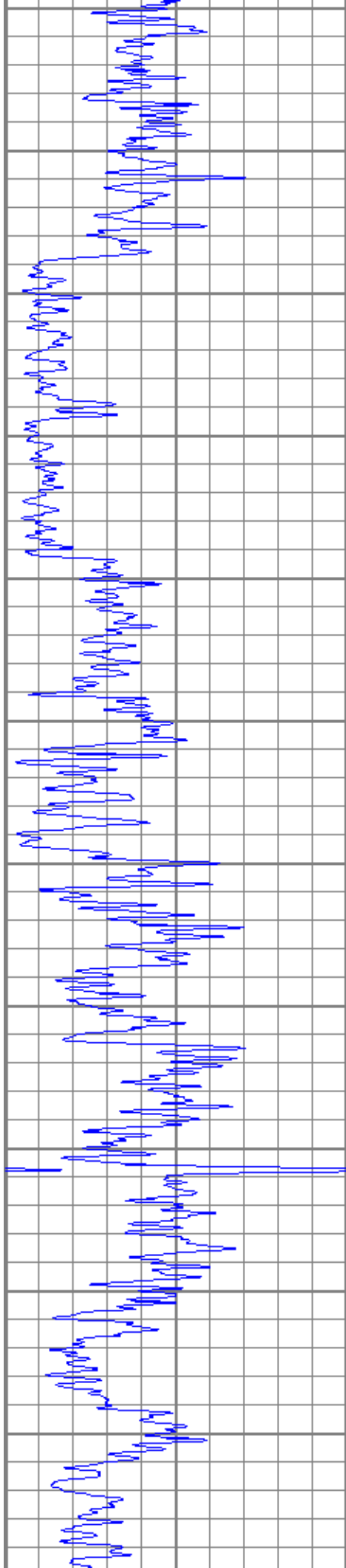


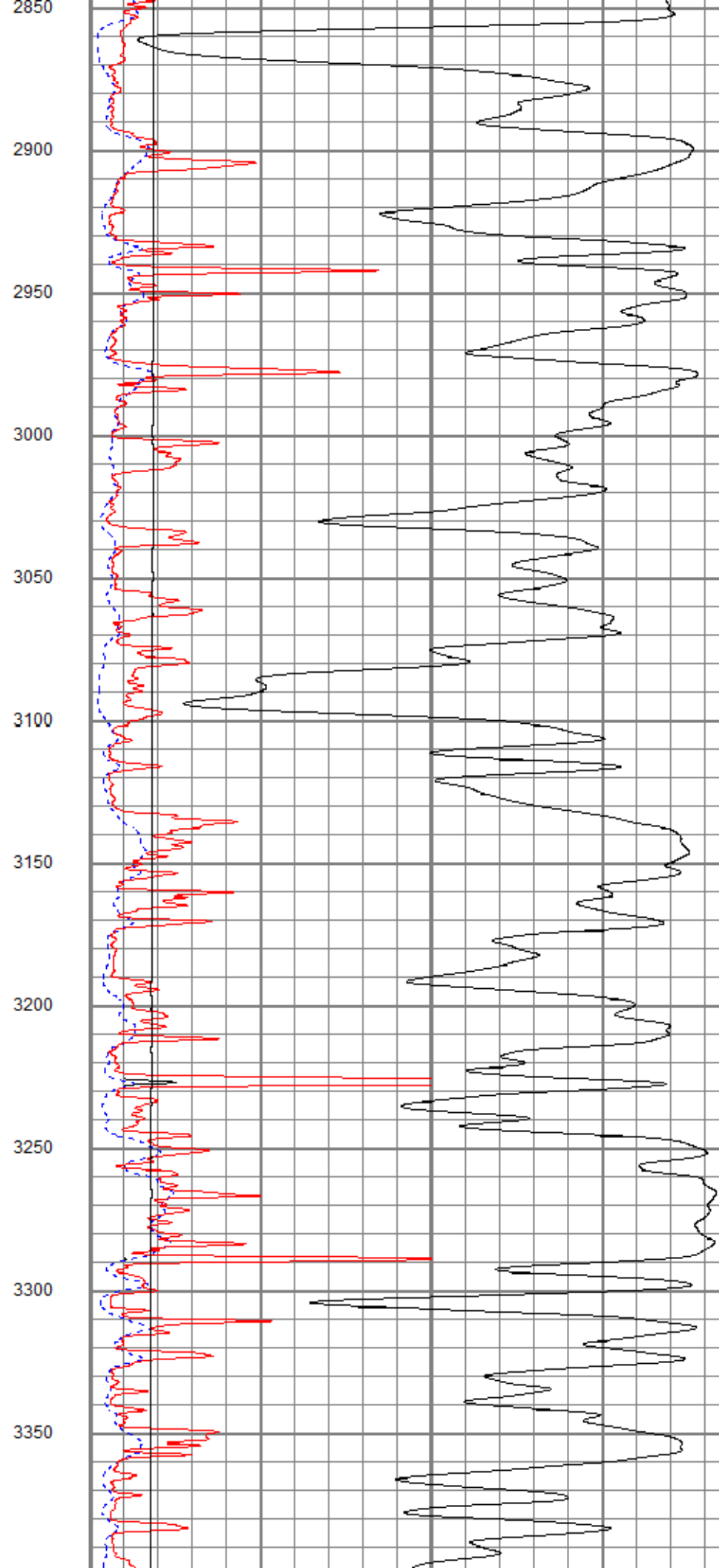
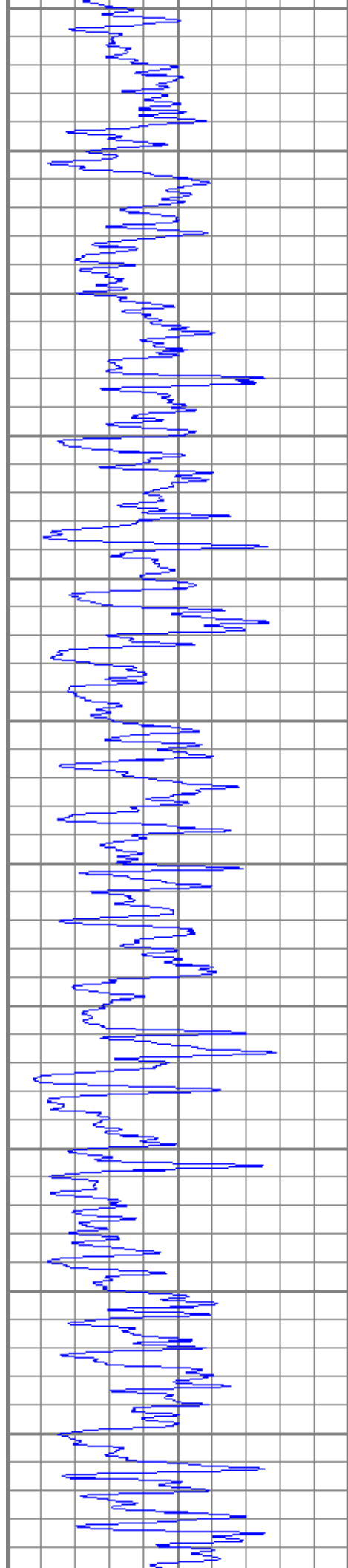


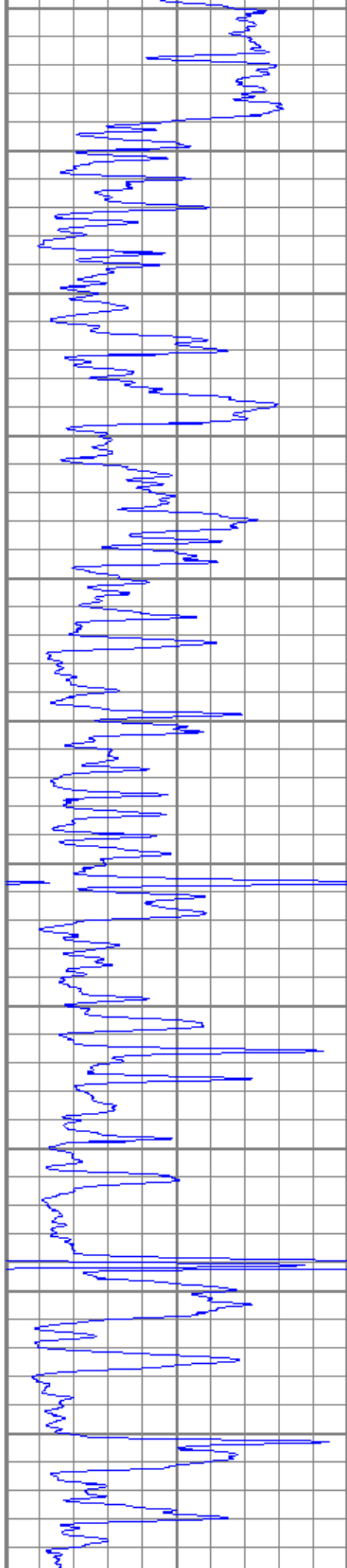
1200
1250
1300
1350
1400
1450
1500
1550
1600
1650
1700



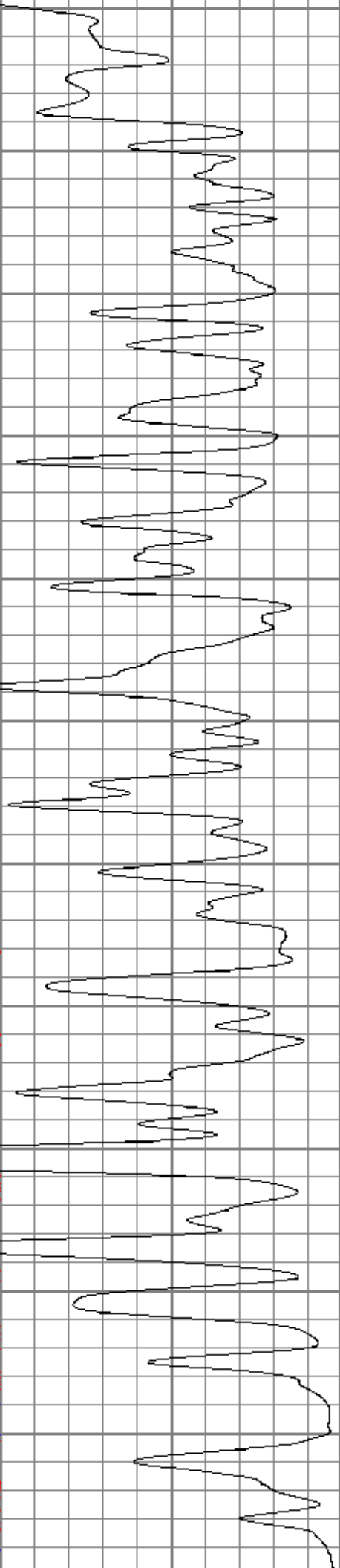
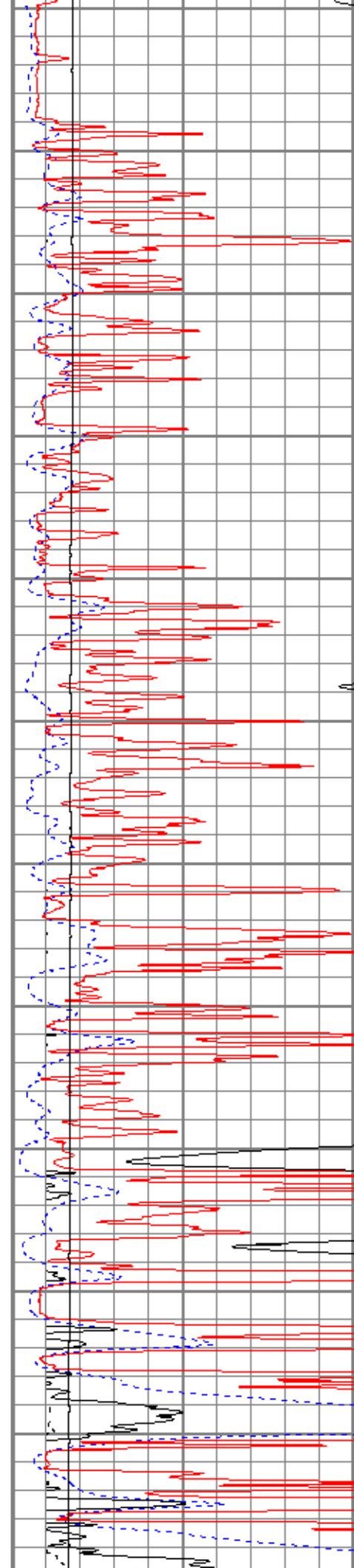


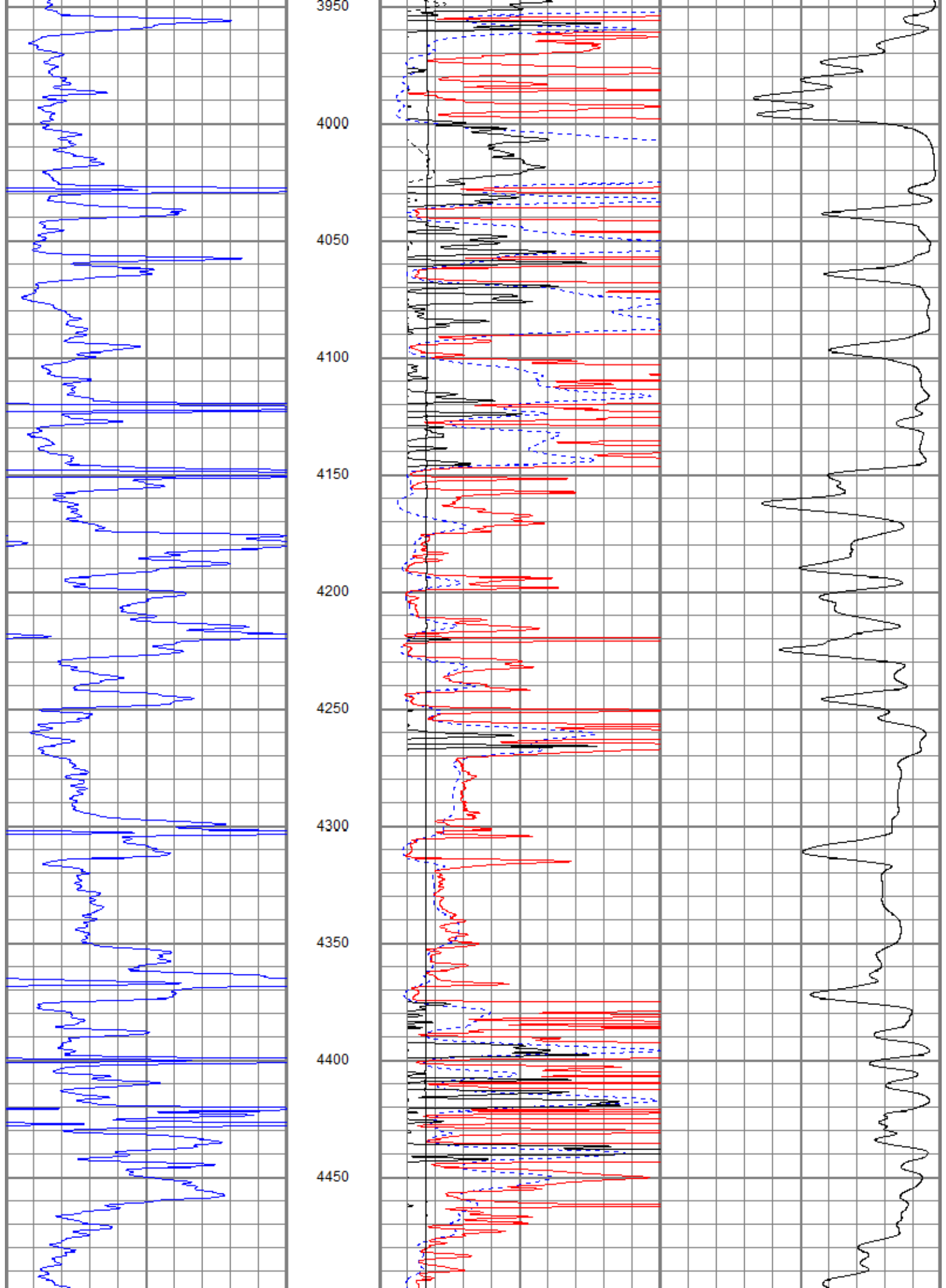


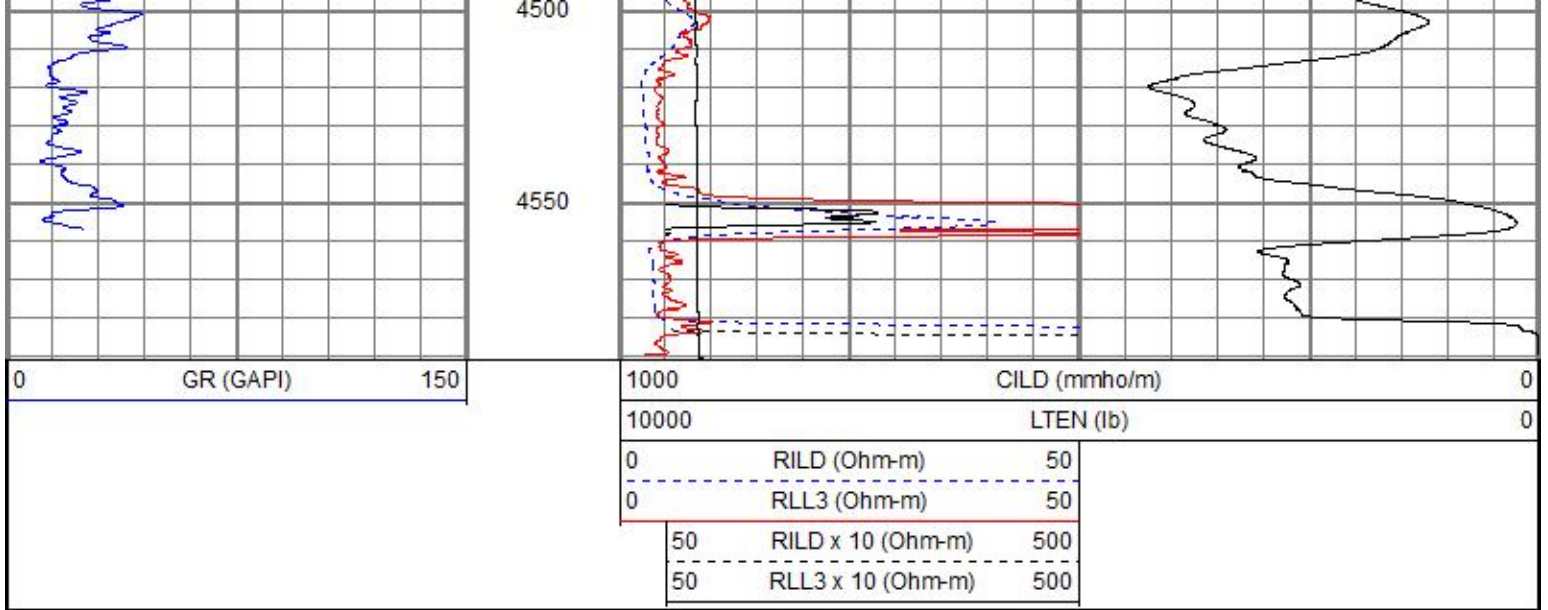




3400
3450
3500
3550
3600
3650
3700
3750
3800
3850
3900



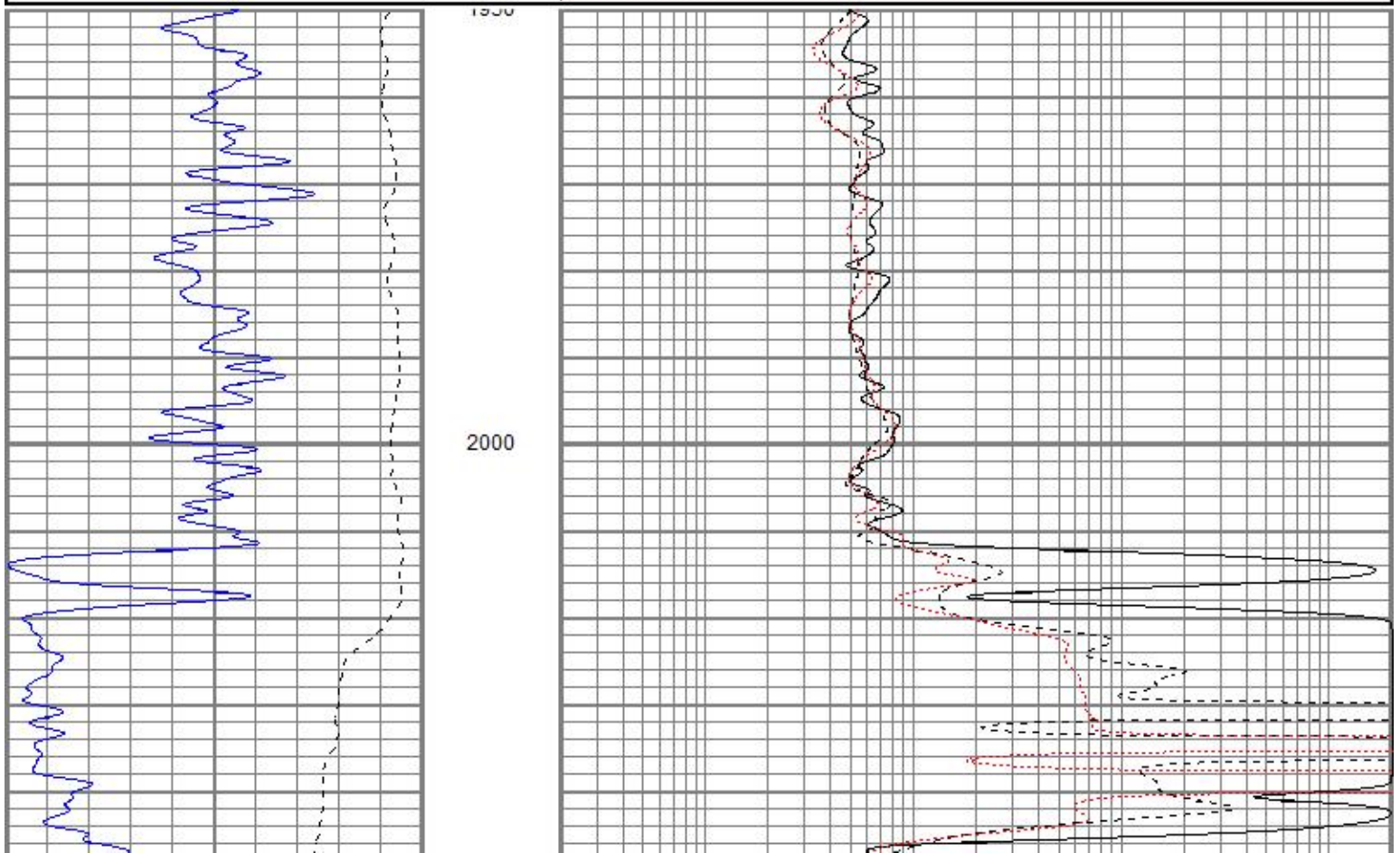


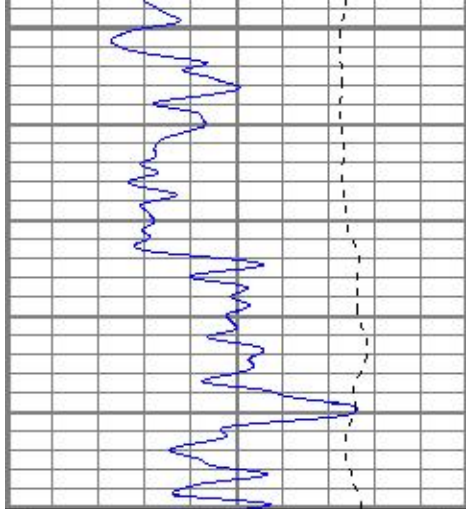


MAIN PASS

Database File ppherman#1oh.db
 Dataset Pathname pass3
 Presentation Format kdil
 Dataset Creation Sat Jun 30 20:36:20 2018
 Charted by Depth in Feet scaled 1:240

0	GR (GAPI)	150	0.2	RILD (Ohm-m)	2000
-100	SP (mV)	100	0.2	RLL3 (Ohm-m)	2000
			0.2	RILM (Ohm-m)	2000

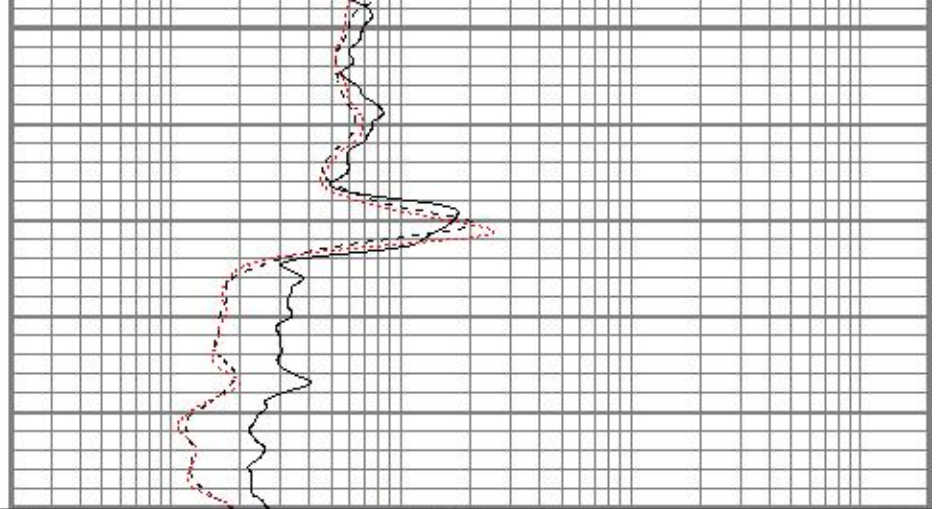




2050

2100

0	GR (GAPI)	150
-100	SP (mV)	100



0.2	RILD (Ohm-m)	2000
0.2	RLL3 (Ohm-m)	2000
0.2	RILM (Ohm-m)	2000

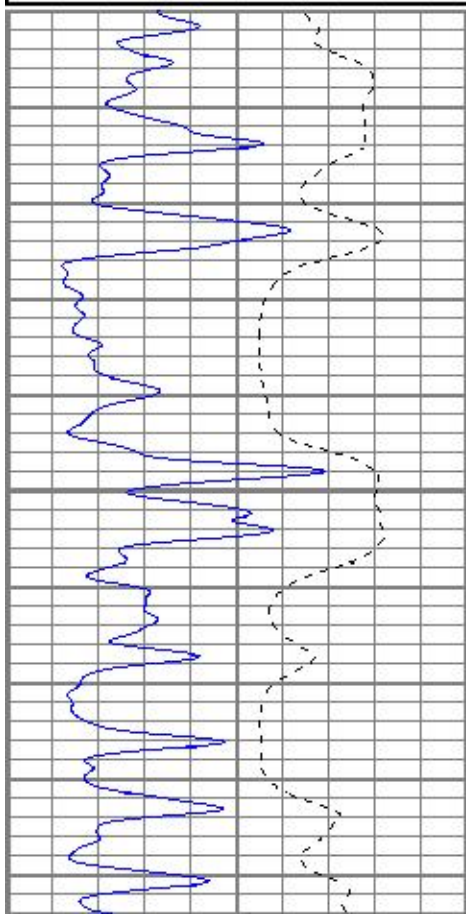


MAIN PASS

Database File ppherman#1oh.db
 Dataset Pathname pass3
 Presentation Format kdil
 Dataset Creation Sat Jun 30 20:36:20 2018
 Charted by Depth in Feet scaled 1:240

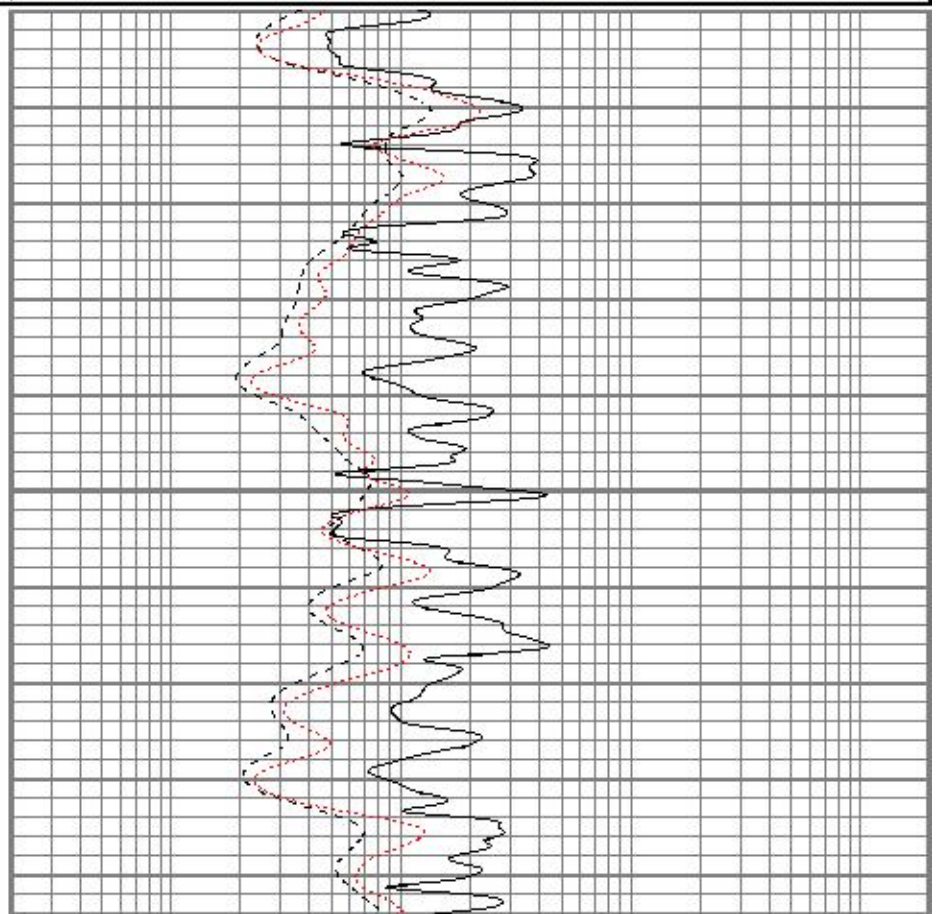
0	GR (GAPI)	150
-100	SP (mV)	100

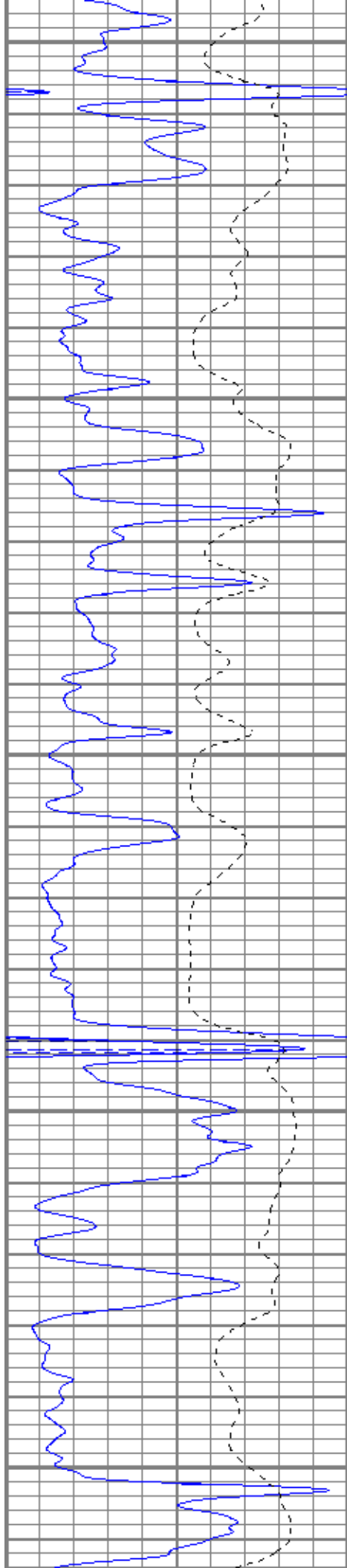
0.2	RILD (Ohm-m)	2000
0.2	RLL3 (Ohm-m)	2000
0.2	RILM (Ohm-m)	2000



3500

3650





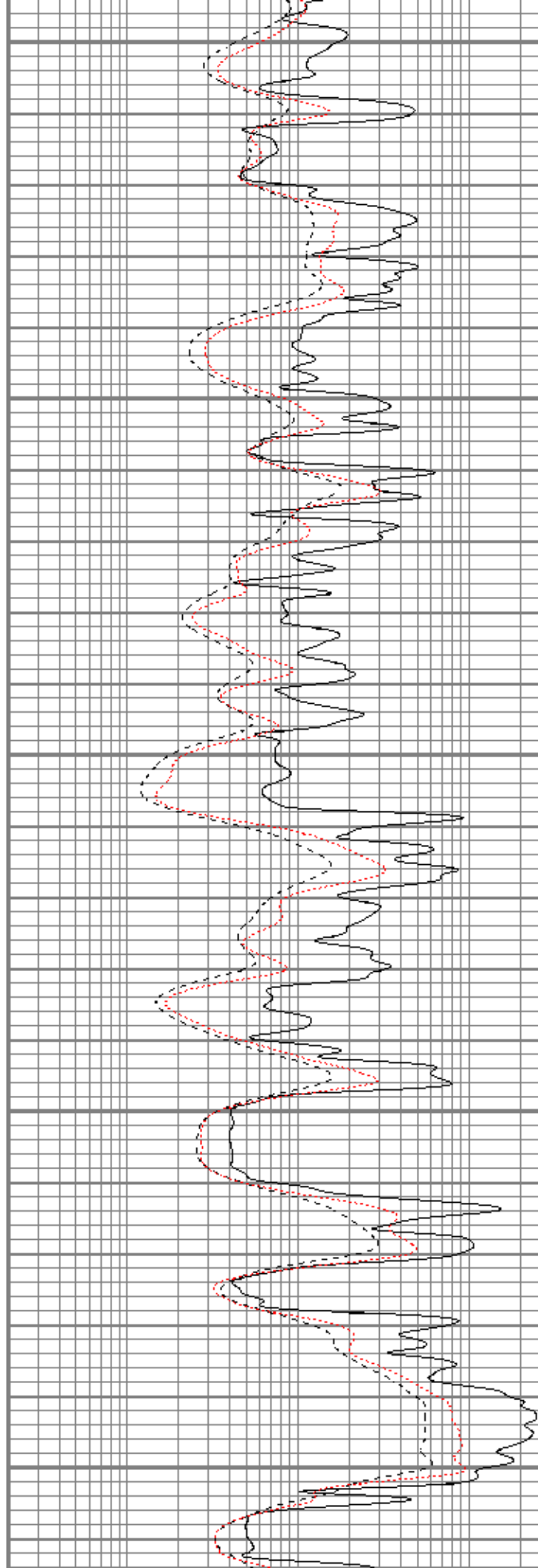
3700

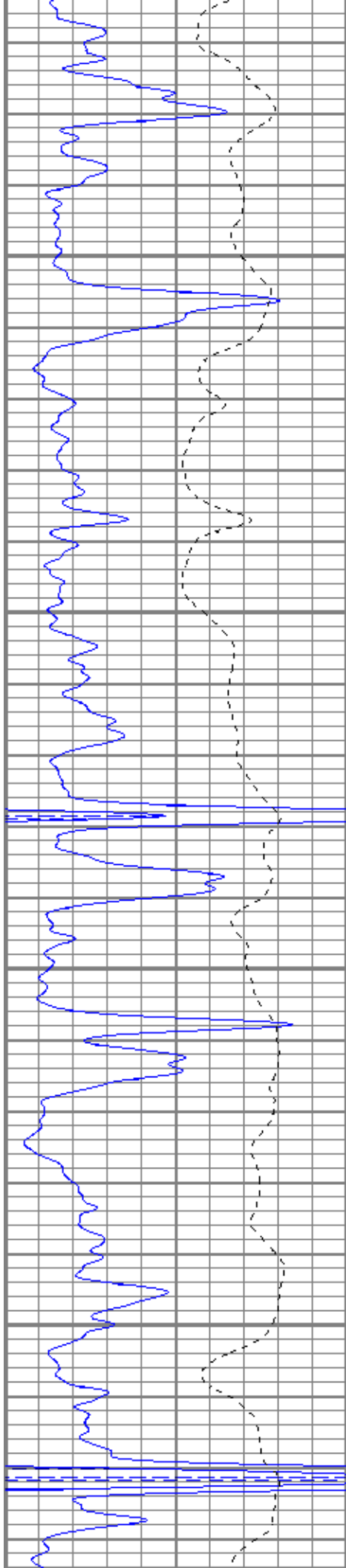
3750

3800

3850

3900



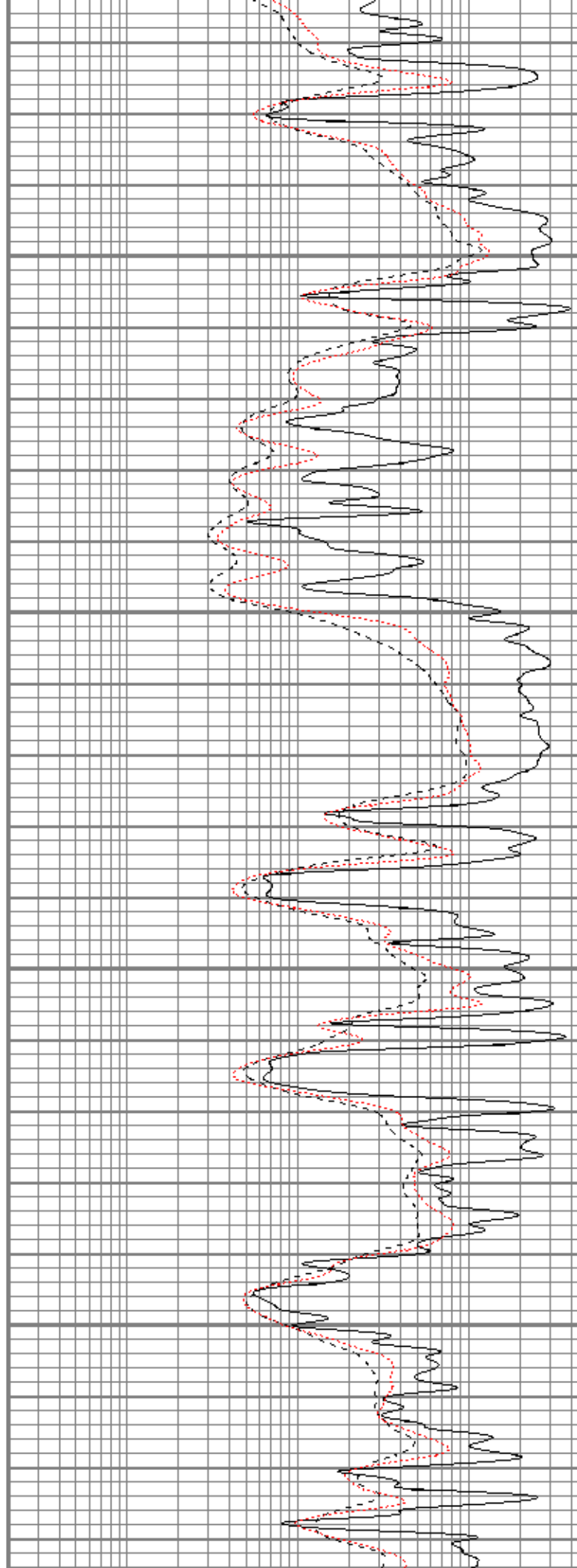


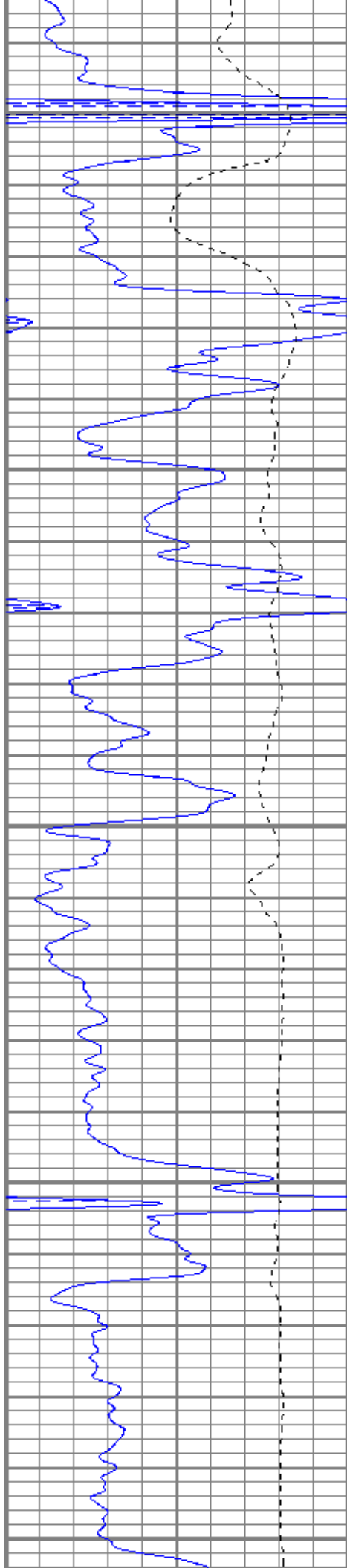
3950

4000

4050

4100





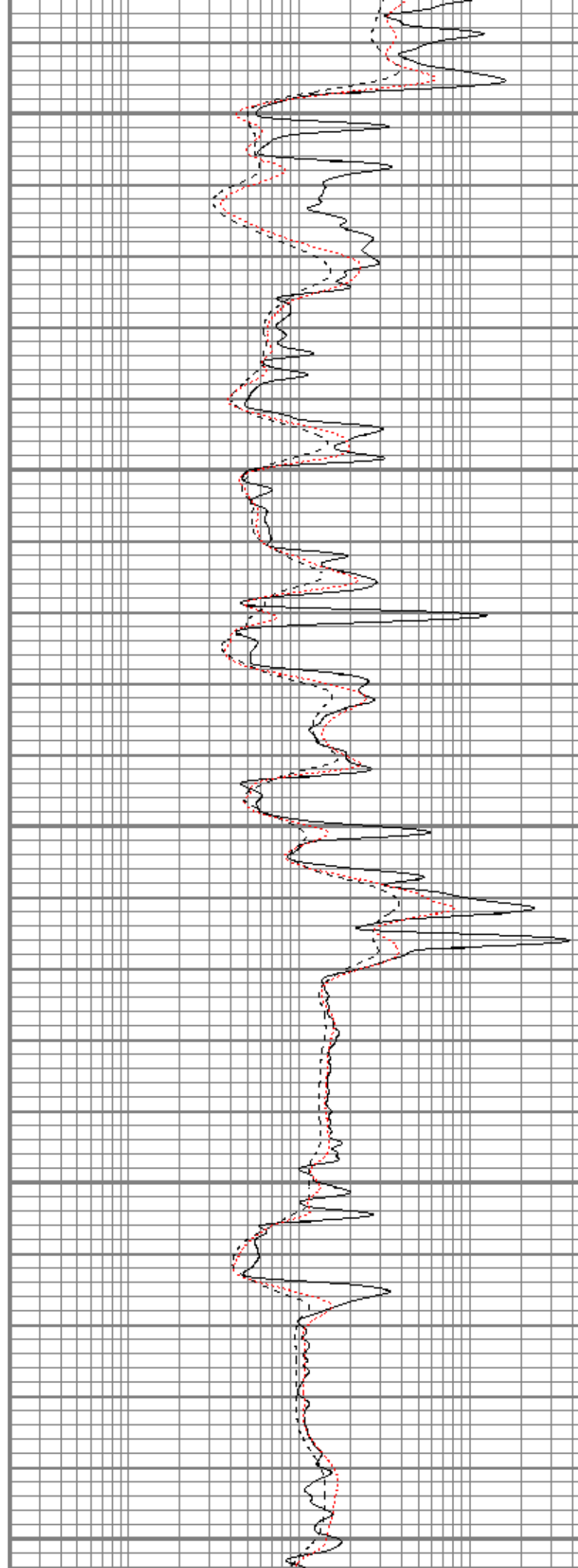
4150

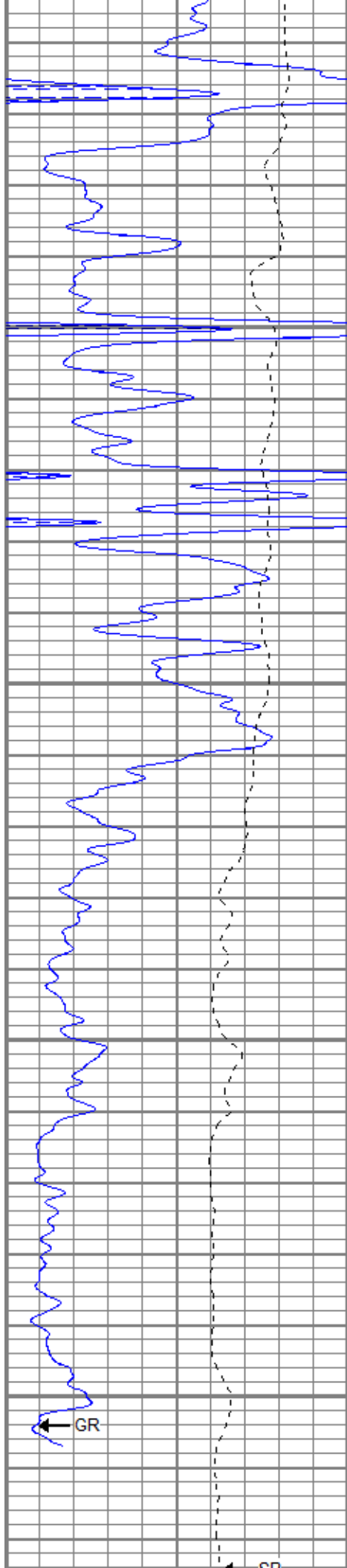
4200

4250

4300

4350



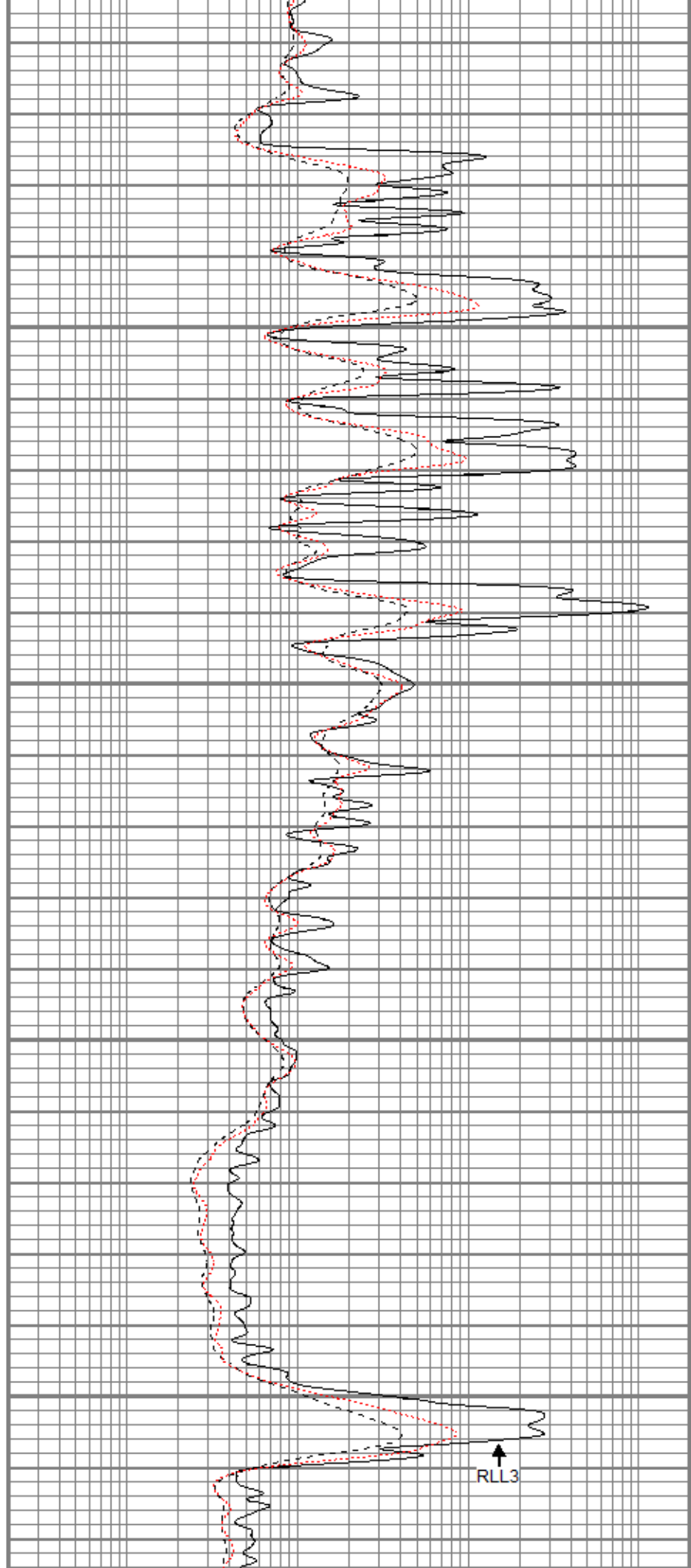


4400

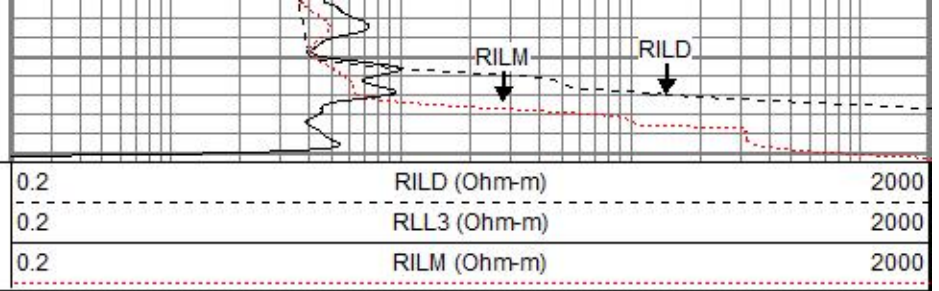
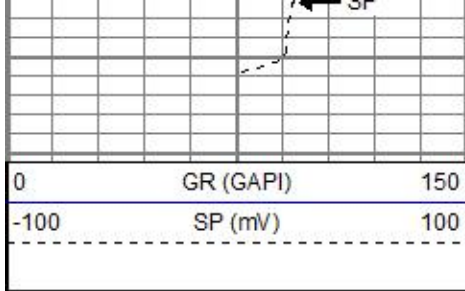
4450

4500

4550

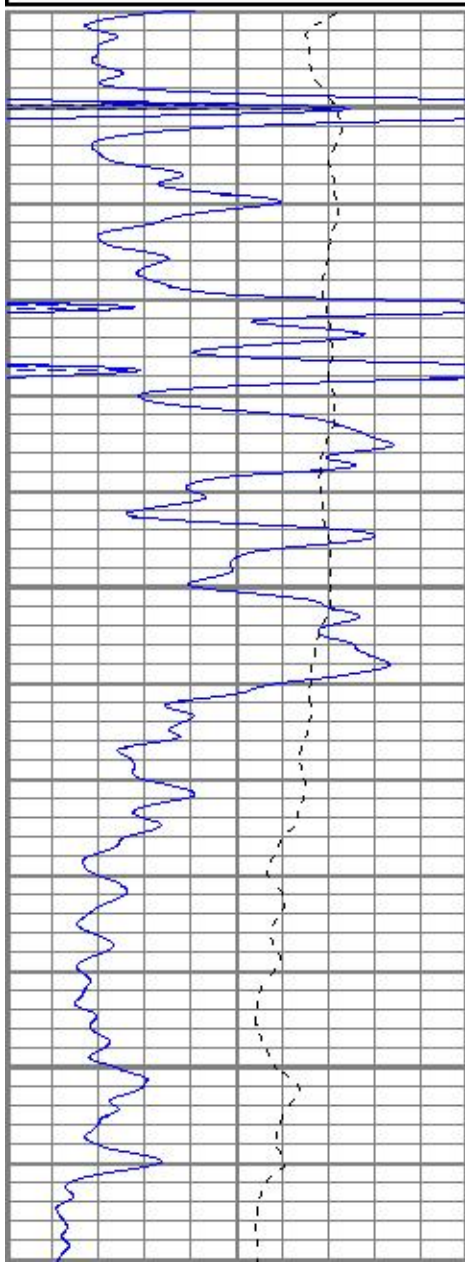
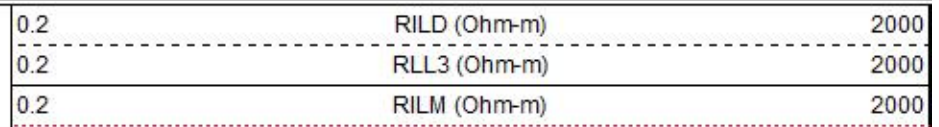
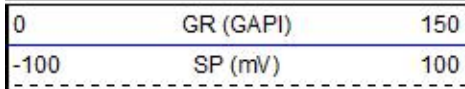


RLL3



REPEAT SECTION

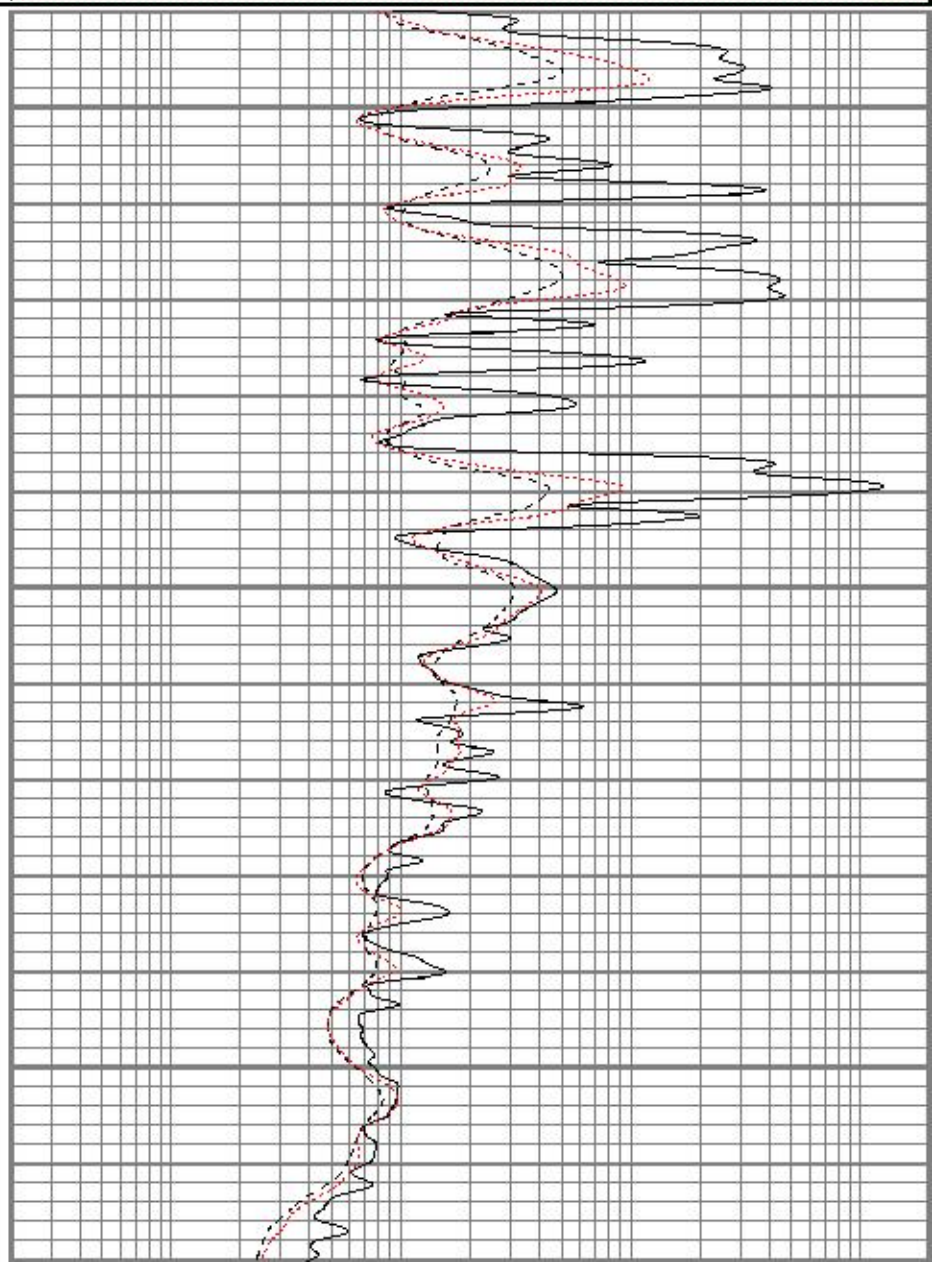
Database File ppherman#1oh.db
 Dataset Pathname pass1.1
 Presentation Format kdil
 Dataset Creation Sat Jun 30 20:57:29 2018
 Charted by Depth in Feet scaled 1:240

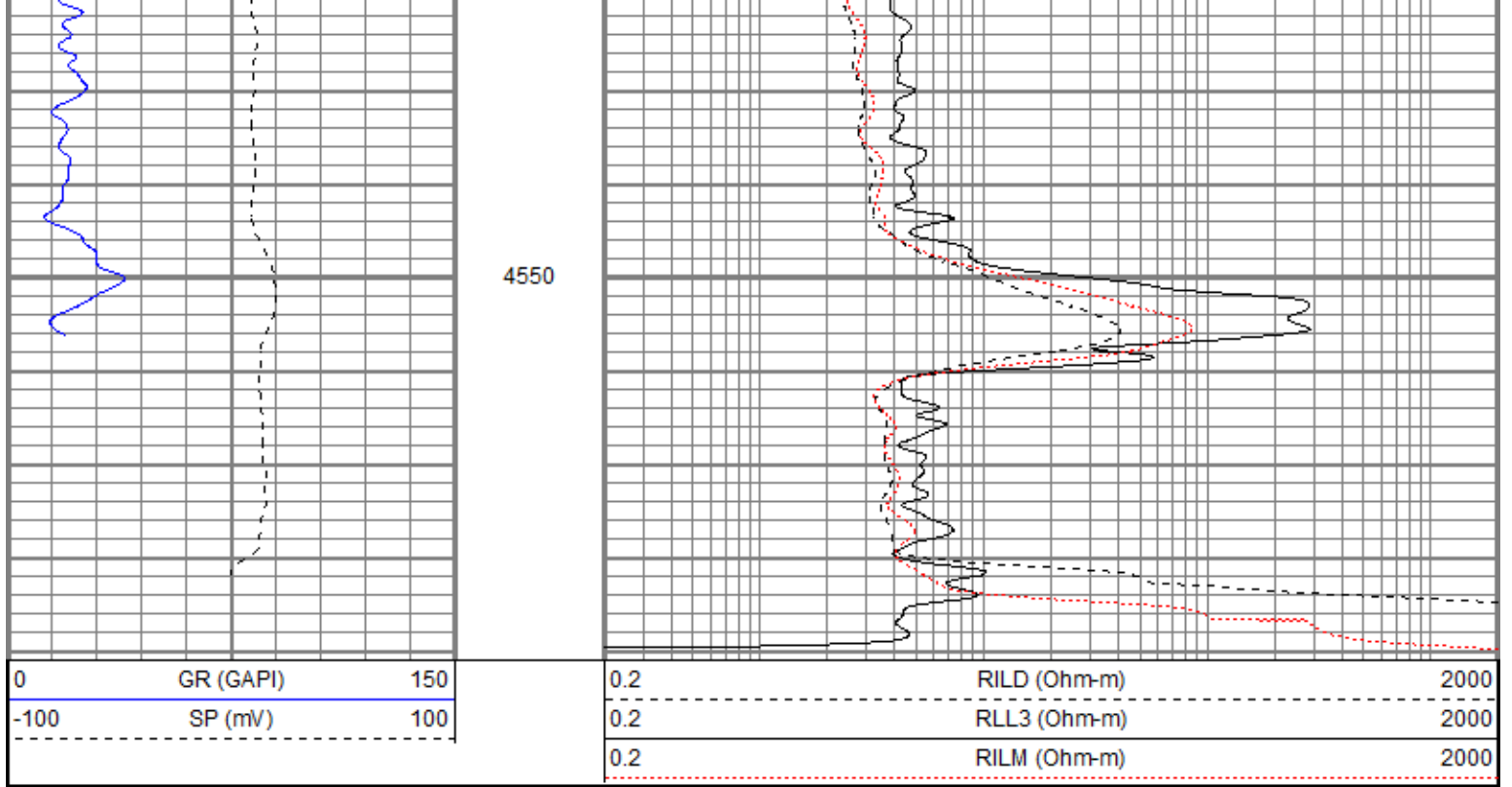


4400

4450

4500





Calibration Report

Database File ppherman#1oh.db
 Dataset Pathname pass3
 Dataset Creation Sat Jun 30 20:36:20 2018

Dual Induction Calibration Report

Serial-Model: 5375-G
 Surface Cal Performed: Mon Jun 04 17:57:18 2018
 Downhole Cal Performed: Mon Jun 04 17:57:18 2018
 After Survey Verification Performed: Mon Jun 04 17:57:18 2018

Surface Calibration

Loop:	Readings				References		Results	
	Air	Loop	V		Air	Loop	m	b
Deep	-0.002	0.655	V	0.000	350.000	mmho/m	532.190	1.293
Medium	0.011	0.730	V	0.000	400.000	mmho/m	555.870	-5.985
Internal:	Zero	Cal		Zero	Cal		m	b
Deep	-0.002	0.654	V	0.000	350.000	mmho/m	532.823	1.314
Medium	0.011	0.731	V	0.000	550.000	mmho/m	763.357	-8.251

Downhole Calibration

Internal:	Readings				References		Results	
	Zero	Cal	mmho/m		Zero	Cal	m	b
Deep	0.000	0.000	mmho/m	-0.019	349.565	mmho/m	1.000	0.000
Medium	0.000	0.000	mmho/m	0.024	400.529	mmho/m	1.000	0.000
Shallow	2.433	0.017	V	500.000	2.000	Ohm-m	200.067	-0.524

After Survey Verification

Internal:	Readings				Targets		Results	
	Zero	Cal	mmho/m		Zero	Cal	m'	b'
Deep	0.000	0.000	mmho/m	0.000	0.000	mmho/m	1.000	0.000

Medium	0.000	0.000	mmho/m	0.000	0.000	mmho/m	1.000	0.000
Shallow	0.000	0.000	Ohm-m	500.000	2.000	Ohm-m	1.000	0.000

Compensated Density Calibration Report

Serial-Model: 2501DHT-DHT
 Source / Verifier: csv-j12 /
 Master Calibration Performed: Mon Jun 04 16:58:12 2018
 Before Survey Verification Performed:
 After Survey Verification Performed:

Master Calibration

	Density		Far Detector	Near Detector	
Magnesium	1.750	g/cc	711.36	284.22	cps
Aluminum	2.640	g/cc	133.07	180.42	cps
Spine Angle = 74.83			Density/Spine Ratio = 0.512		
	Size		Reading		
Small Ring	7.55	in	8572.55		
Large Ring	14.00	in	11285.70		

Before Survey Verification

	Target		Measured	
		g/cc		g/cc
		g/cc		g/cc
		g/cc		g/cc

After Survey Verification

	Target		Measured	
		g/cc		g/cc
		g/cc		g/cc
		g/cc		g/cc

Gamma Ray Calibration Report

Serial Number: 2000
 Tool Model: P2000
 Performed: Sun May 06 10:04:13 2018

Calibrator Value: 1.0 GAPI

Background Reading: 0.0 cps
 Calibrator Reading: 1.0 cps

Sensitivity: 0.7000 GAPI/cps

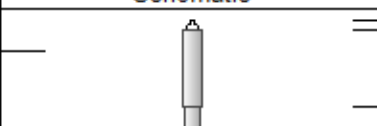
Neutron Calibration Report

Serial Number: 5108
 Tool Model: PROBE
 Performed: Sun Feb 19 03:21:57 2017

Calibrator Value: 1 NAPI

Calibrator Reading: 1 cps

Sensitivity: 1 NAPI/cps

Sensor	Offset (ft)	Schematic	Description	Length (ft)	O.D. (in)	Weight (lb)
NEU	38.37		CHD-None	0.75	1.50	5.00
			NEU-PROBE (5108) Probe	4.92	3.63	85.00

GR	32.57		GR-P2000 (2000)	3.67	3.25	40.00
LSD	23.78		CDL-DHT (2501DHT) Digital High Temp CDL Tool	9.69	4.00	201.00
DCAL	23.49					
SSD	23.24					
HEADVOLT	21.47					
SP	10.60		DIL-G (5375) Gearhart	21.47	4.00	345.00
CILD	10.60					
CILM	6.89					
RLL3	1.70					

Dataset: ppherman#1oh.db: field/well/run1/pass3
 Total length: 40.49 ft
 Total weight: 676.00 lb
 O.D.: 4.00 in