

**COMPUTALOG**  
WIRELINE, INC.

DRUMRIGHT, OK

**COMPENSATED DENSITY  
COMPENSATED NEUTRON  
MICRO-ELECTRIC  
GAMMA RAY**

Company	REDTAIL INVESTMENTS L.L.C.	Company	REDTAIL INVESTMENTS L.L.C.
Well	REDTAIL # 2	Well	REDTAIL # 2
Field	NORTH MADDIX	Field	NORTH MADDIX
County	COWLEY	County	COWLEY
State	KANSAS	State	KANSAS
Location:	API # :	Other Services	DIG-GR
Permanent Datum	N/2-SW-1NW 1650FNL-660FWL	Elevation	1281'
Log Measured From	G.L. 0'	K.B.	
Drilling Measured From	K.B.	D.F.	
		G.L.	1281'

Date	4-11-2020
Run Number	ONE
Depth Driller	3250'
Depth Logger	3247'
Bottom Logged Interval	3245'
Top Log Interval	SURF.
Casing Driller	310'
Casing Logger	311'
Bit Size	7 7/8
Type Fluid in Hole	CHEM GEL
Density / Viscosity	9.5/55
pH / Fluid Loss	10.5/8.0
Source of Sample	FLOWLINE
Rm @ Meas. Temp	3.0@90F
Rmf @ Meas. Temp	2.2@90f
Rmc @ Meas. Temp	3.7@90F
Source of Rmf / Rmc	C
Rm @ BHT	
Time Circulation Stopped	1030
Time Logger on Bottom	1400
Maximum Recorded Temperature	111F
Equipment Number	5504
Location	CUSHING
Recorded By	J.DELONG
Witnessed By	MR. HOWARD

<<< Fold Here >>>

All interpretations are opinions based on inferences from electrical or other measurements and we cannot and do not guarantee the accuracy or correctness of any interpretation, and we shall not, except in the case of gross or willful negligence on our part, be liable or responsible for any loss, costs, damages, or expenses incurred or sustained by anyone resulting from any interpretation made by any of our officers, agents or employees. These interpretations are also subject to our general terms and conditions set out in our current Price Schedule.

**Comments**

**Calibration Report**

Database File: redtail\_2.db  
Dataset Pathname: Maddix/rEDTAIL\_2/Dig1/pass5.1  
Dataset Creation: Sat Apr 11 15:49:34 2020 by Calc SOC 120430

### Compensated Density Calibration Report

Serial-Model:	2001-GEAR_A
Source / Verifier:	CSV-K97 / ALUM
Master Calibration Performed:	Tue Apr 07 09:44:02 2020
Before Survey Verification Performed:	
After Survey Verification Performed:	

#### Master Calibration

	Density		Far Detector		Near Detector	
Magnesium	1.755	g/cc	531.32		236.31	cps
Aluminum	2.600	g/cc	105.59		154.33	cps
	Spine Angle = 75.23		Density/Spine Ratio = 0.506			
	Size		Reading			
Small Ring	8.00	in	0.97		V	
Large Ring	12.00	in	1.41		V	

#### Before Survey Verification

Target	Measured
g/cc	g/cc
g/cc	g/cc
g/cc	g/cc

#### After Survey Verification

Target	Measured
g/cc	g/cc
g/cc	g/cc
g/cc	g/cc

### Microlog Calibration Report

Serial-Model:	G-9052-Probe
Performed:	Tue Apr 07 09:39:02 2020

	Readings			References			Results	
	Zero	Cal		Zero	Cal		m	b
Normal	-0.0015	0.0622	V	0.0000	10.0000	Ohm-m	157.2130	0.2284
Inverse	0.0016	0.0507	V	0.0000	10.0000	Ohm-m	203.6420	-0.3201
Caliper	1.8699	2.8970	V	8.0000	12.0000	in	3.8943	0.7000

### Compensated Neutron Calibration Report

Serial Number:	5001c
Tool Model:	openhole

#### PRE-SURVEY VERIFICATION

Detector	Readings	Measured	Target
Short Space	8025.66 cps		
Long Space	776.18 cps	27.22 pu	27.22 pu

#### POST-SURVEY VERIFICATION

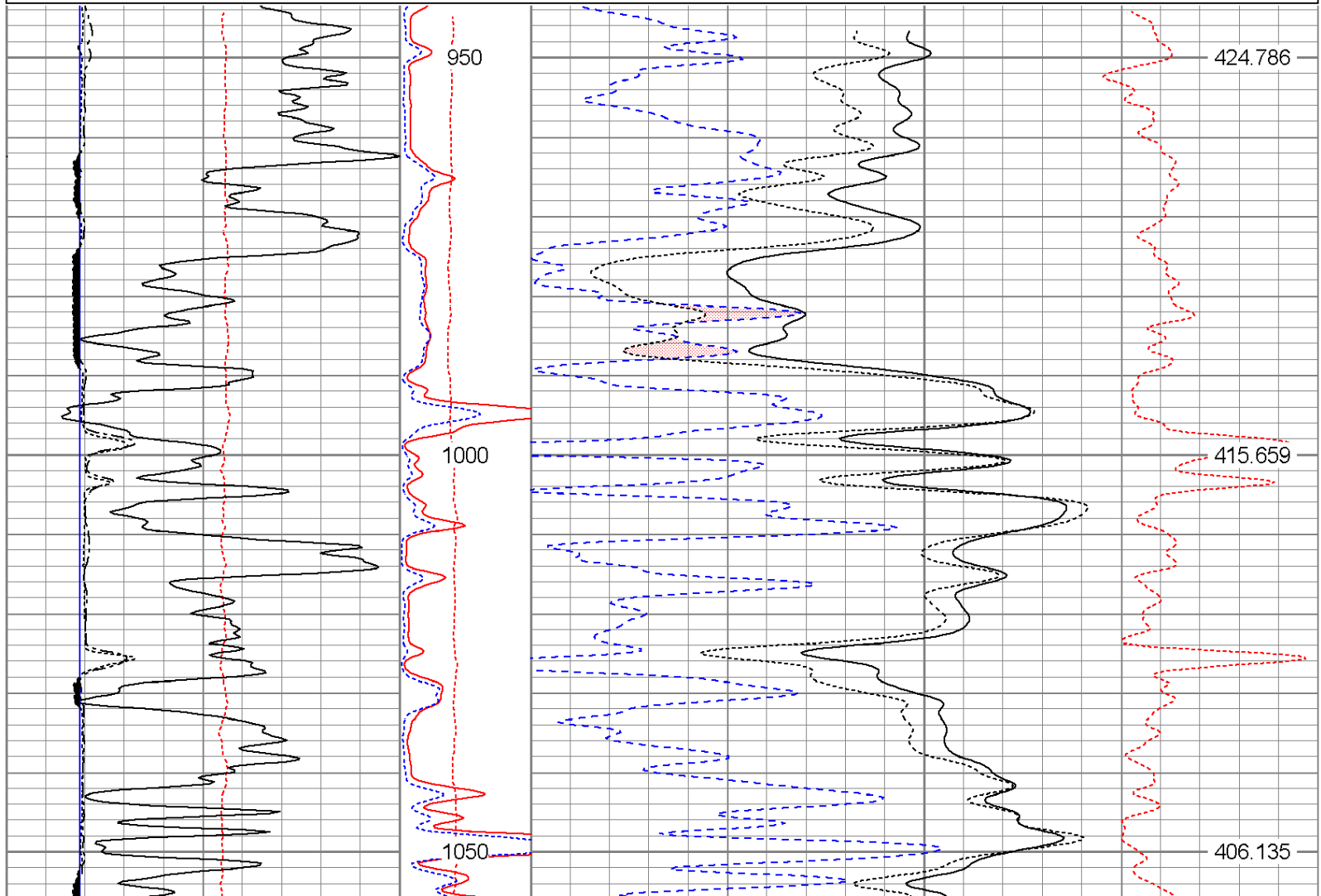
Detector	Readings	Measured	Target
Short Space			
Long Space			

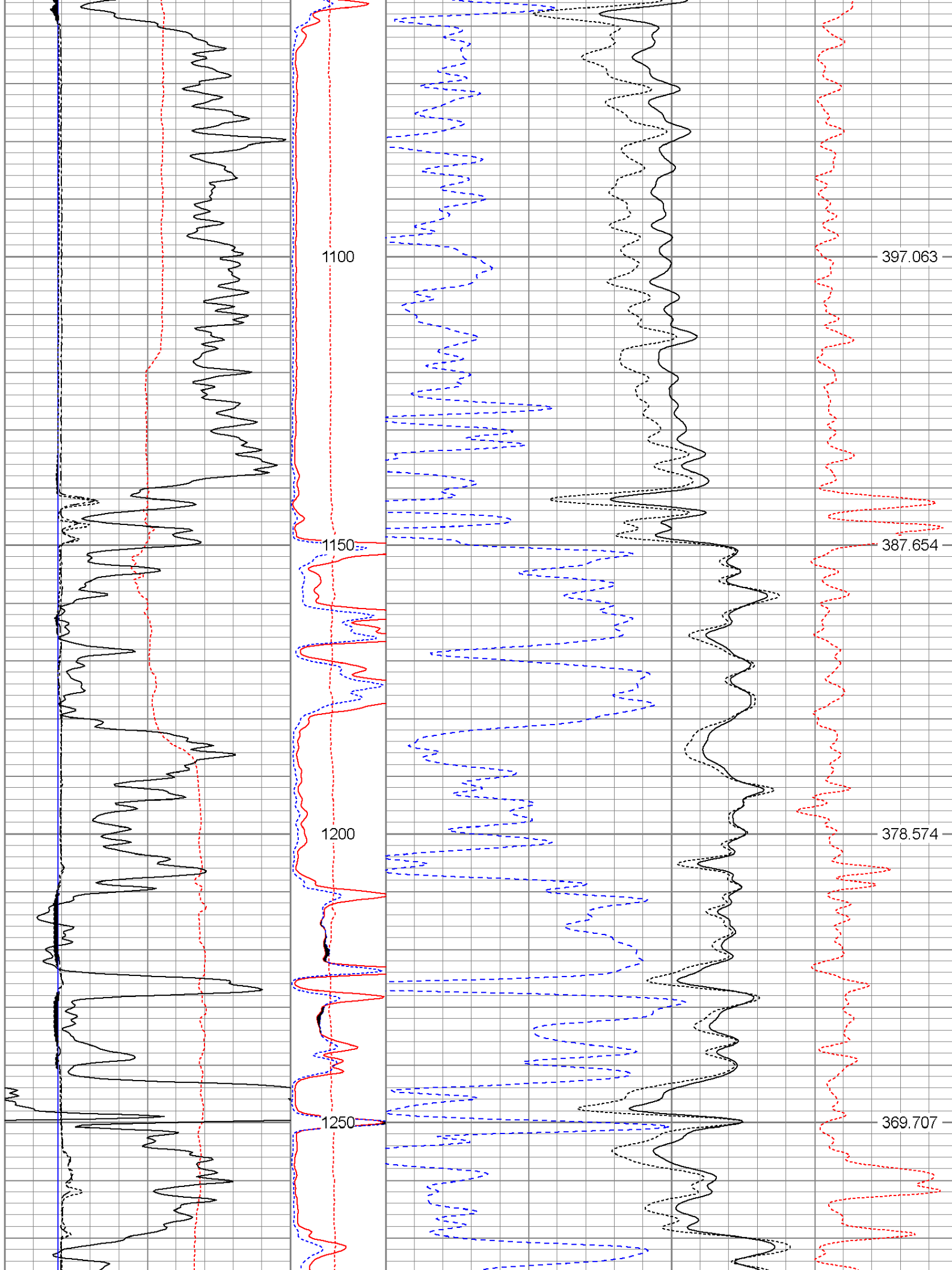
## Gamma Ray Calibration Report

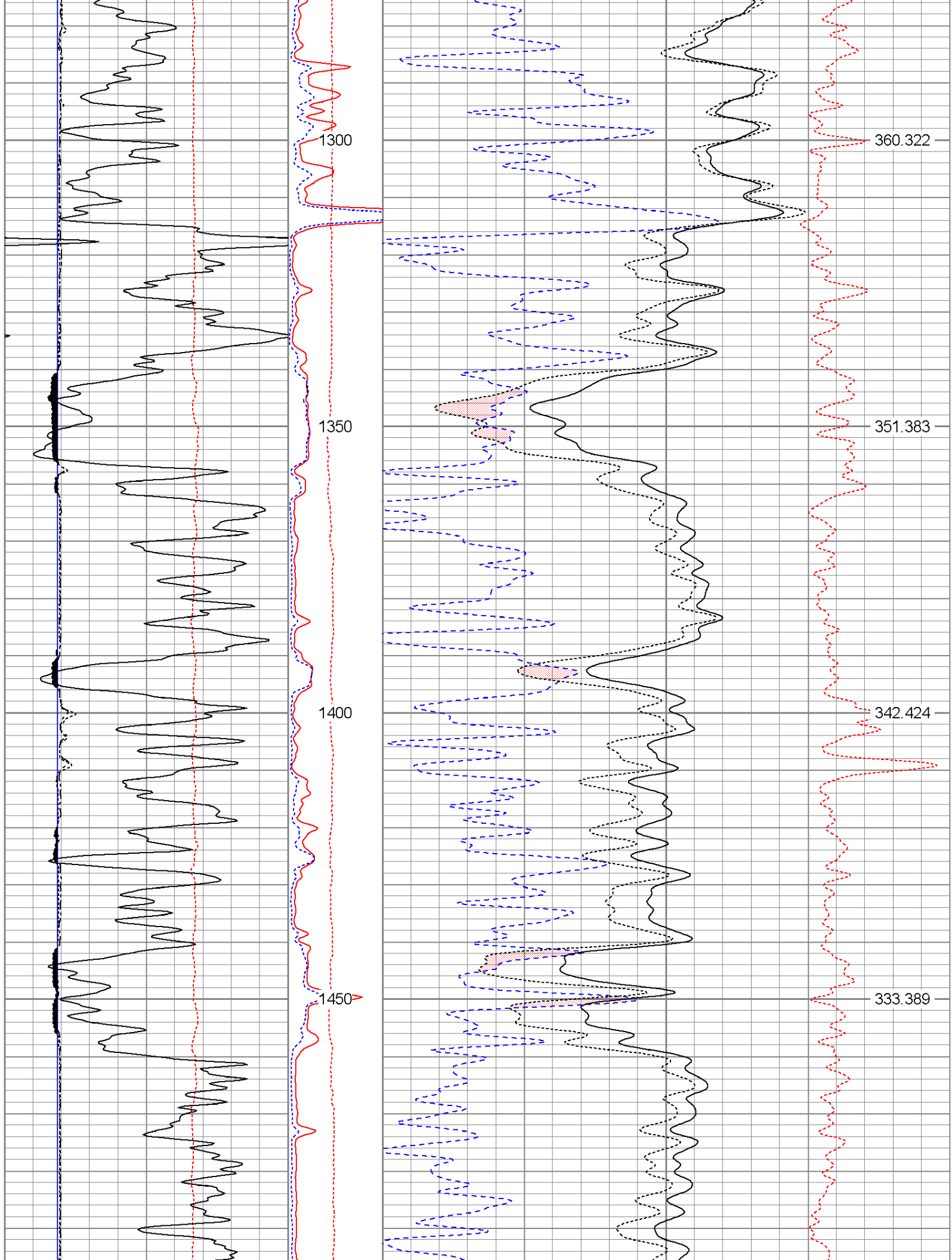
Serial Number:	GR2001	
Tool Model:	GEAR_A	
Performed:	Mon Mar 31 19:01:06 2014	
Calibrator Value:	1.0	GAPI
Background Reading:	0.6	cps
Calibrator Reading:	1.0	cps
Sensitivity:	0.6000	GAPI/cps

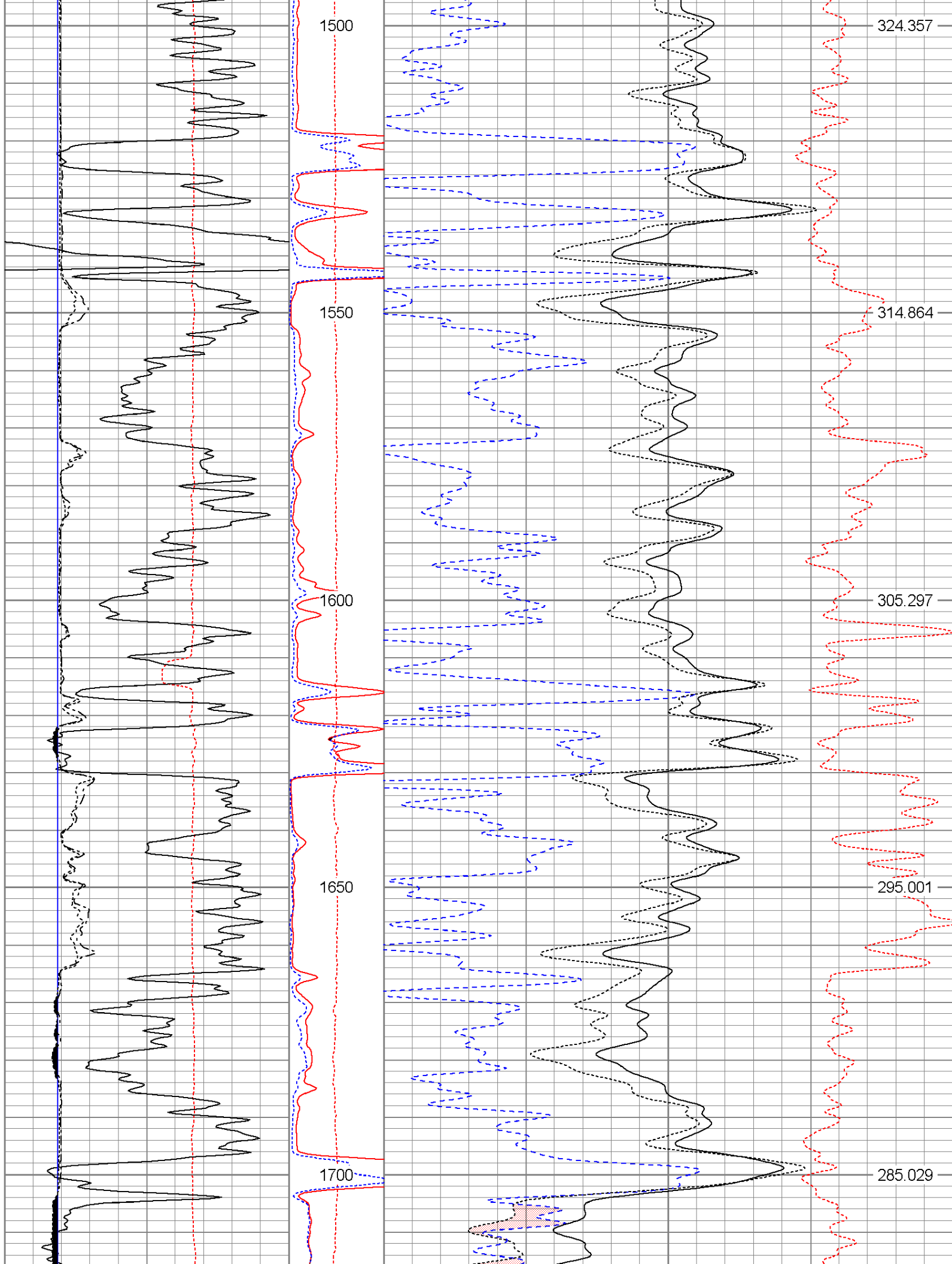
Database File:	redtail_2.db
Dataset Pathname:	Maddix/redTAIL_2/Dig1/pass5.1
Presentation Format:	-8-cdcnm
Dataset Creation:	Sat Apr 11 15:49:34 2020 by Calc SOC 120430
Charted by:	Depth in Feet scaled 1:240

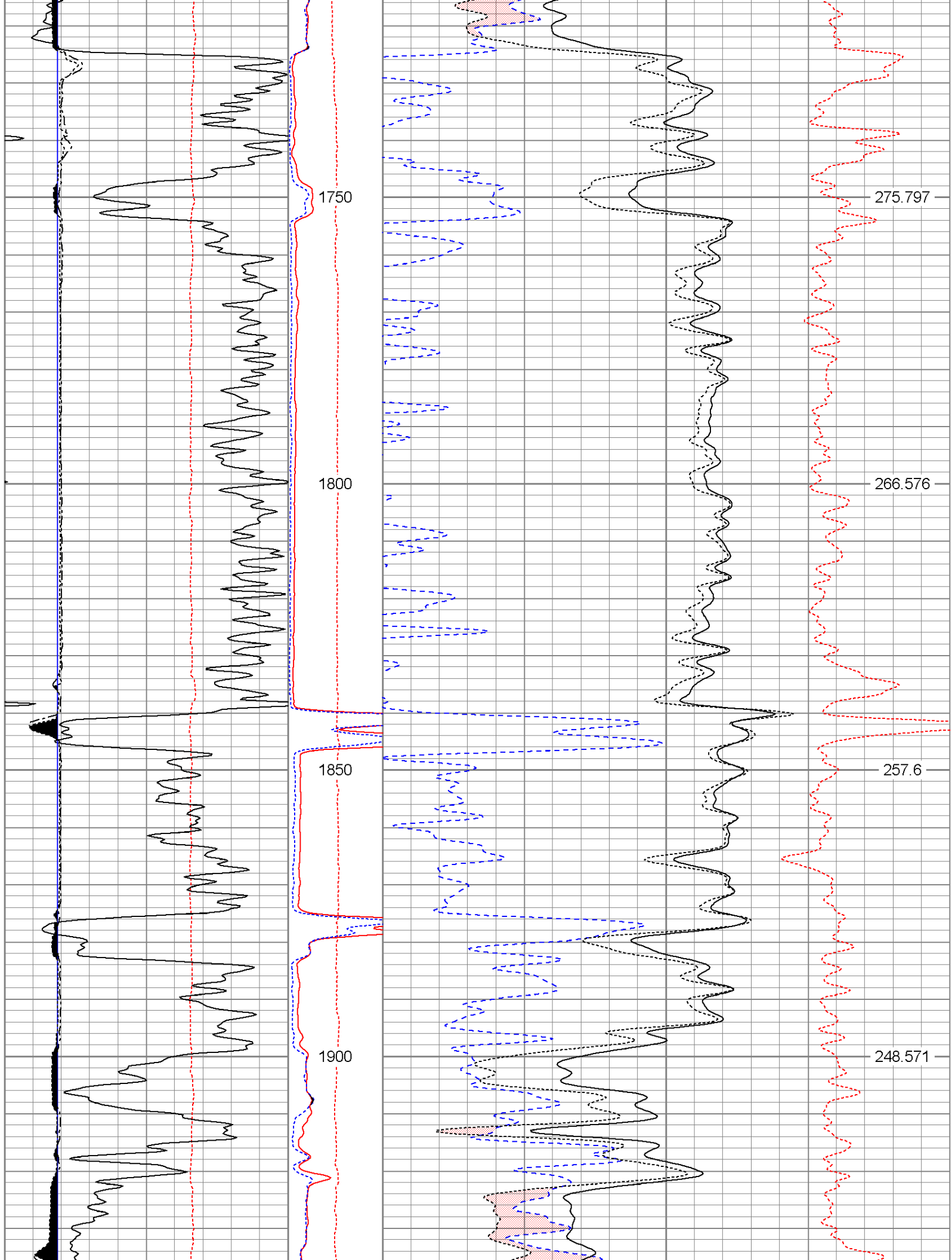
0	LSPD (ft/min)	-100		LTEN	30	CNPOR (pu)	-10	
0	GR (GAPI)	150	0	(lb)2500	30	DPOR (pu)	-10	
6	BOREID (in)	16		MN	2	RHOB (g/cc)	3	
6	MCAL (in)	16		(Ohm-m)		-0.25	RHOC (g/cc)	0.25
6	DCAL (in)	16	0	40			ABHV (ft3)	
				MI				
				(Ohm-m)				
			0	40				

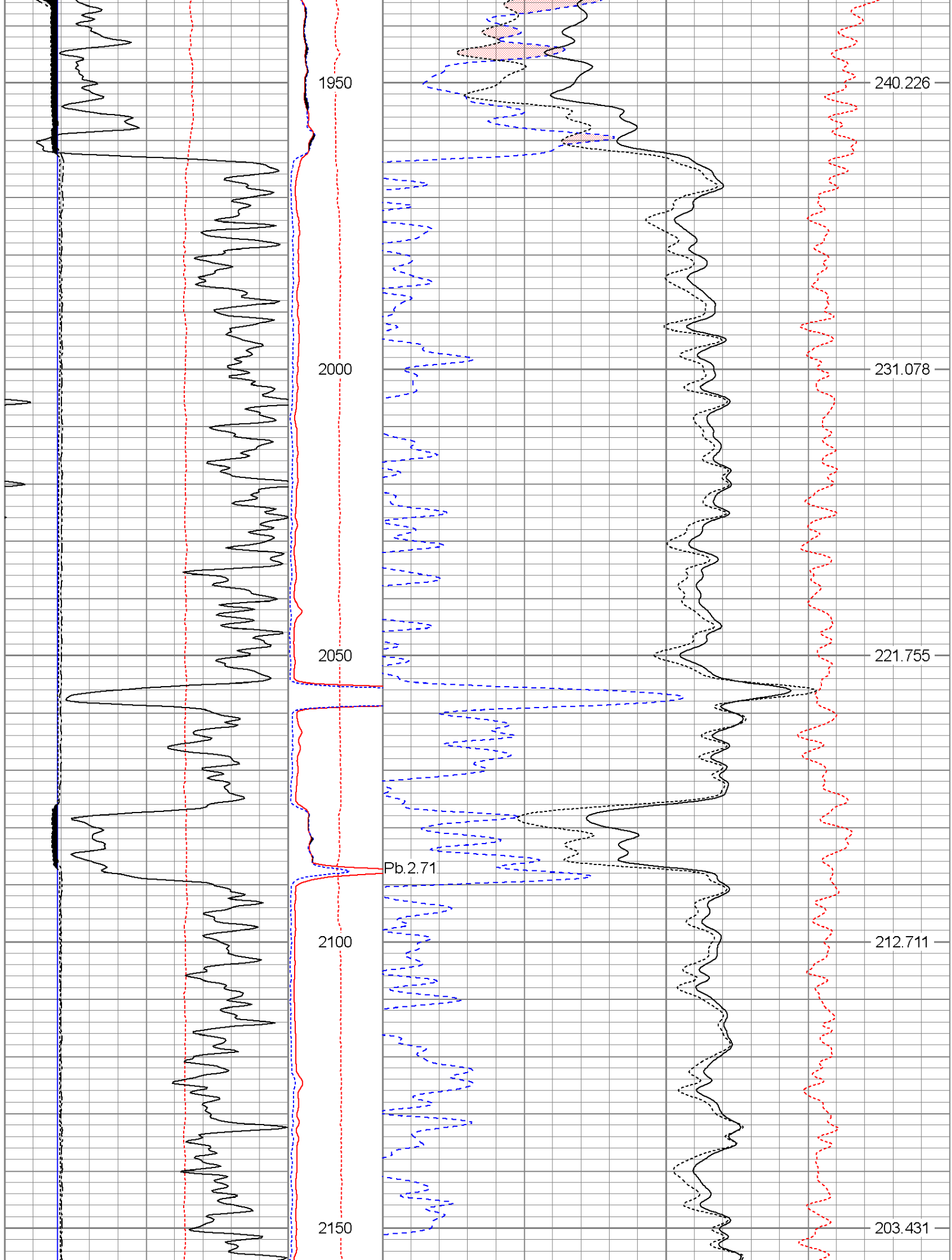


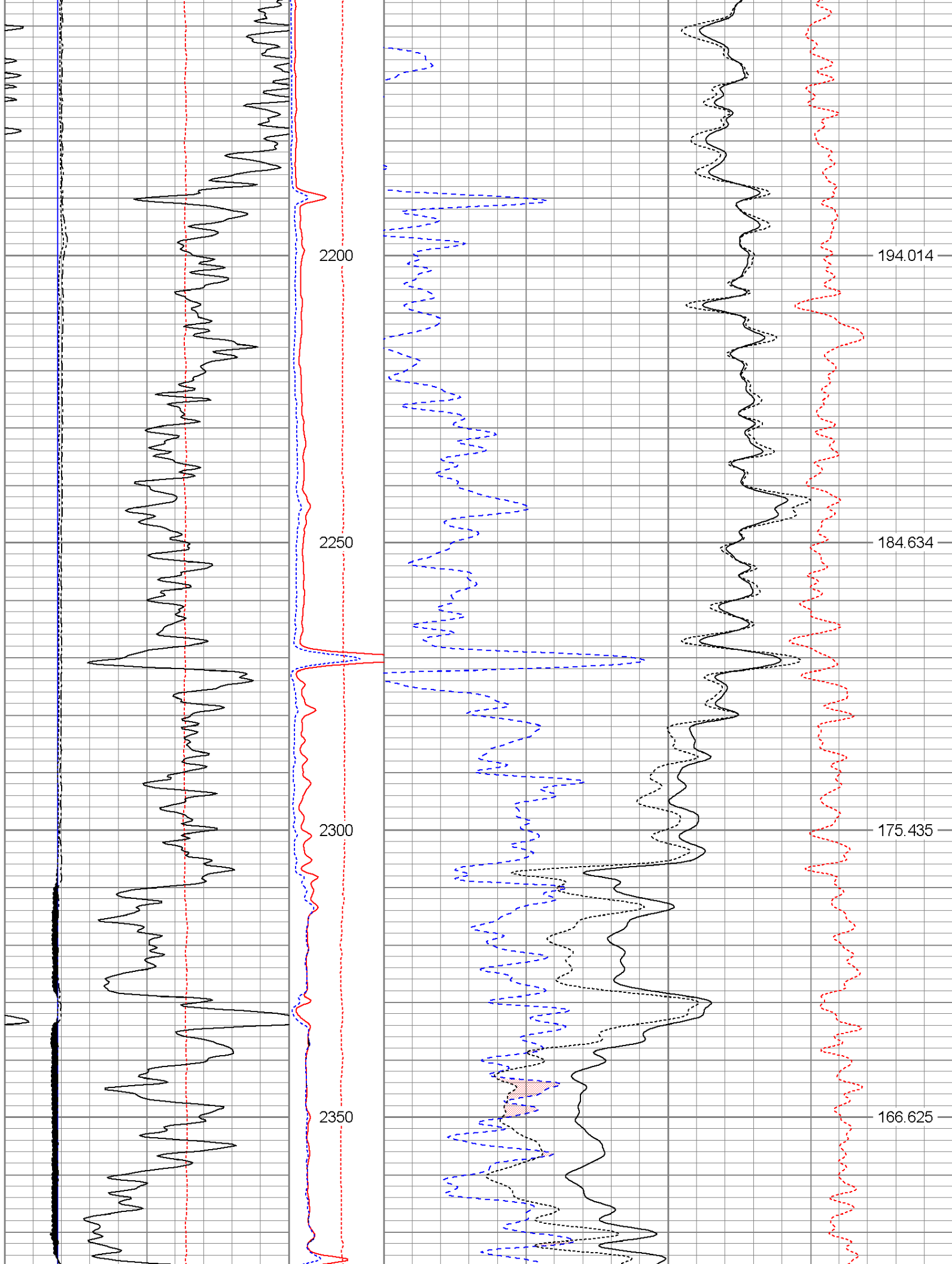


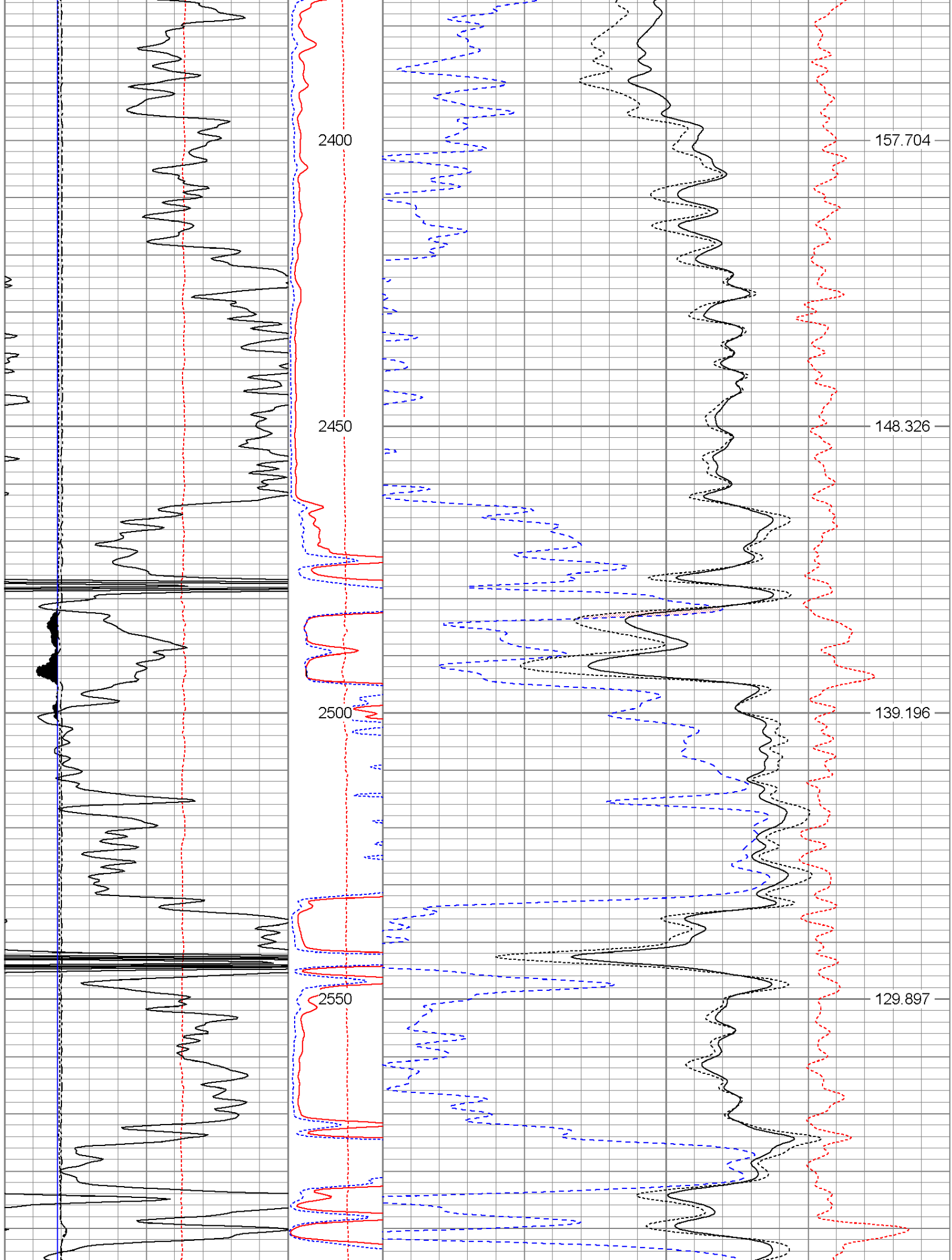


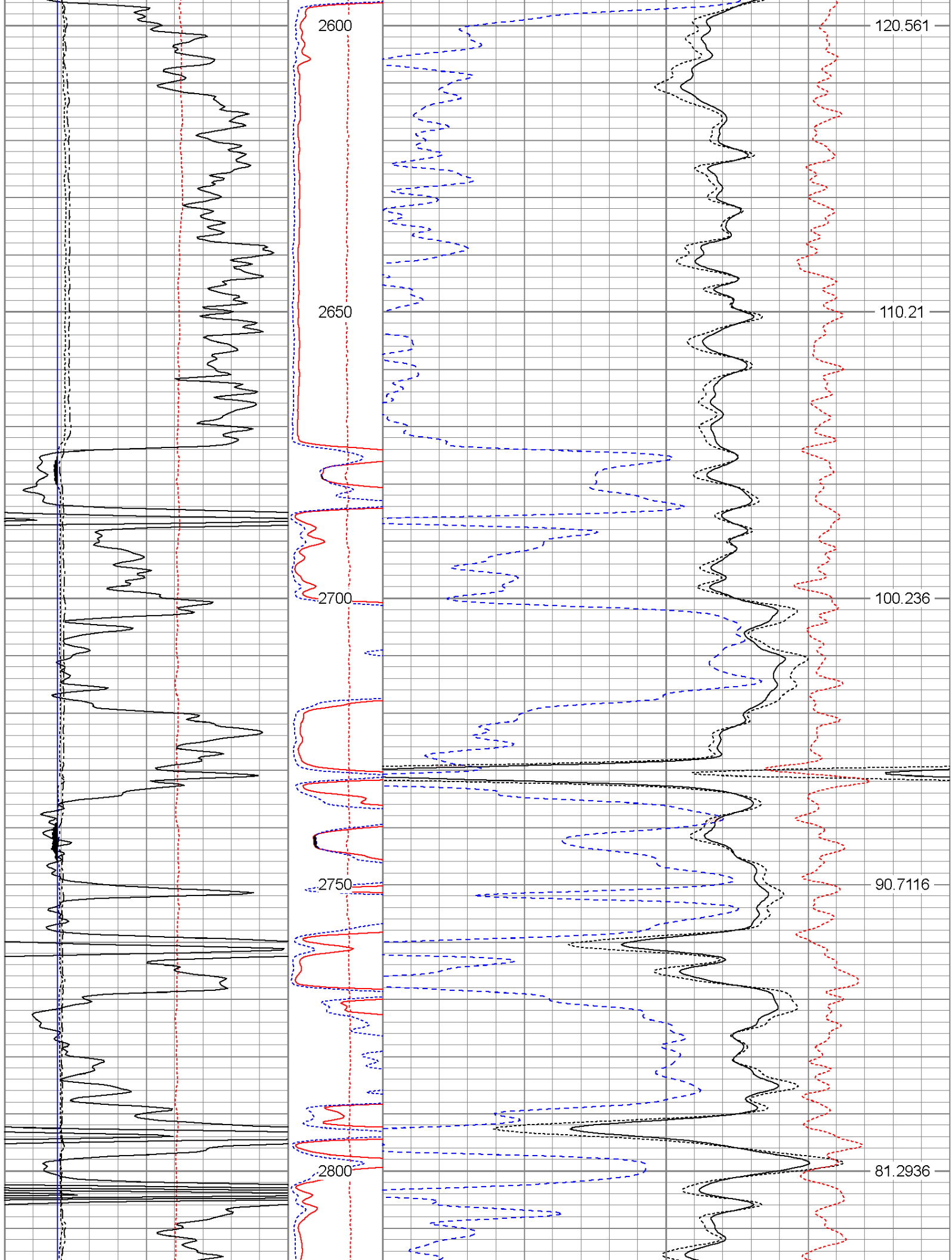


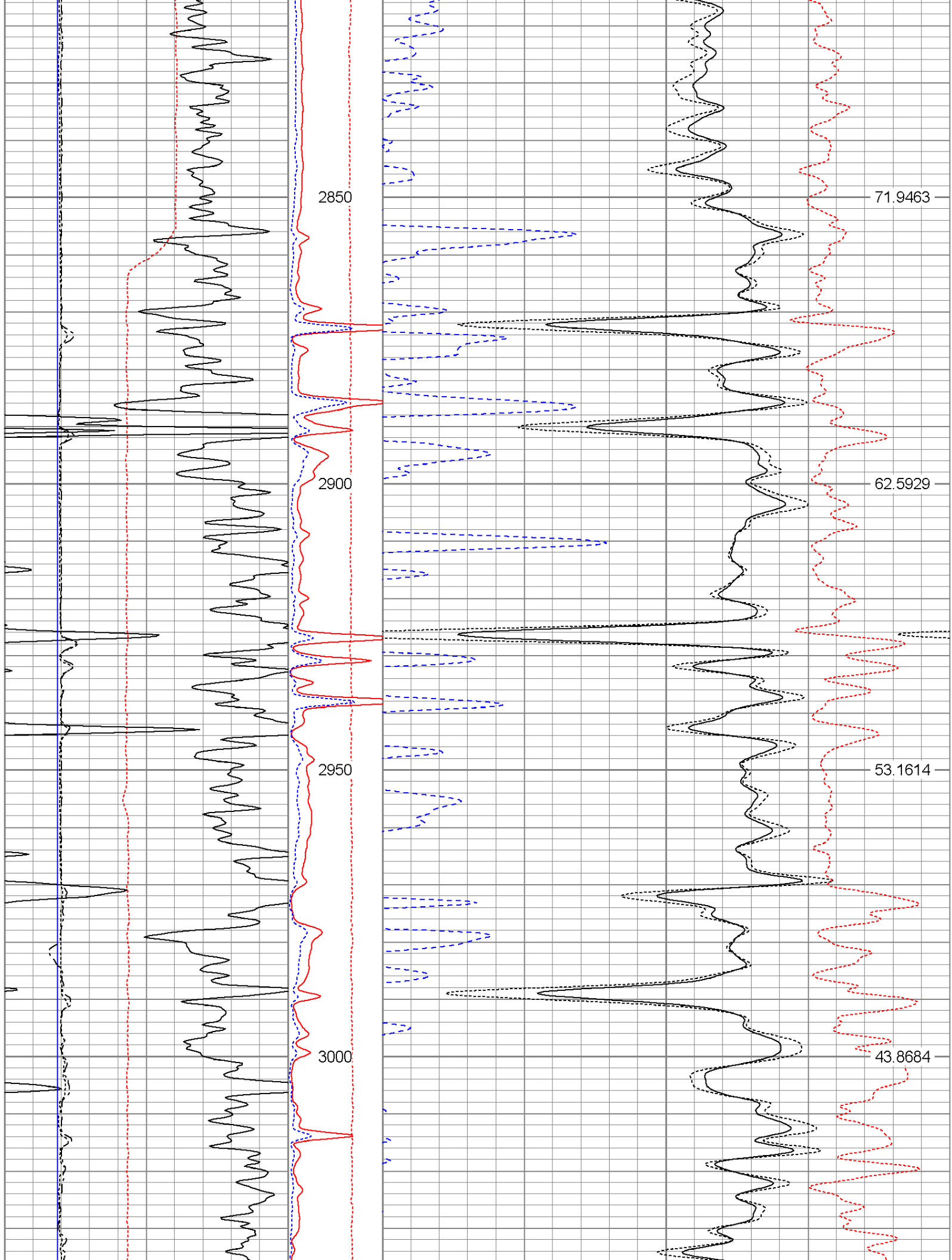


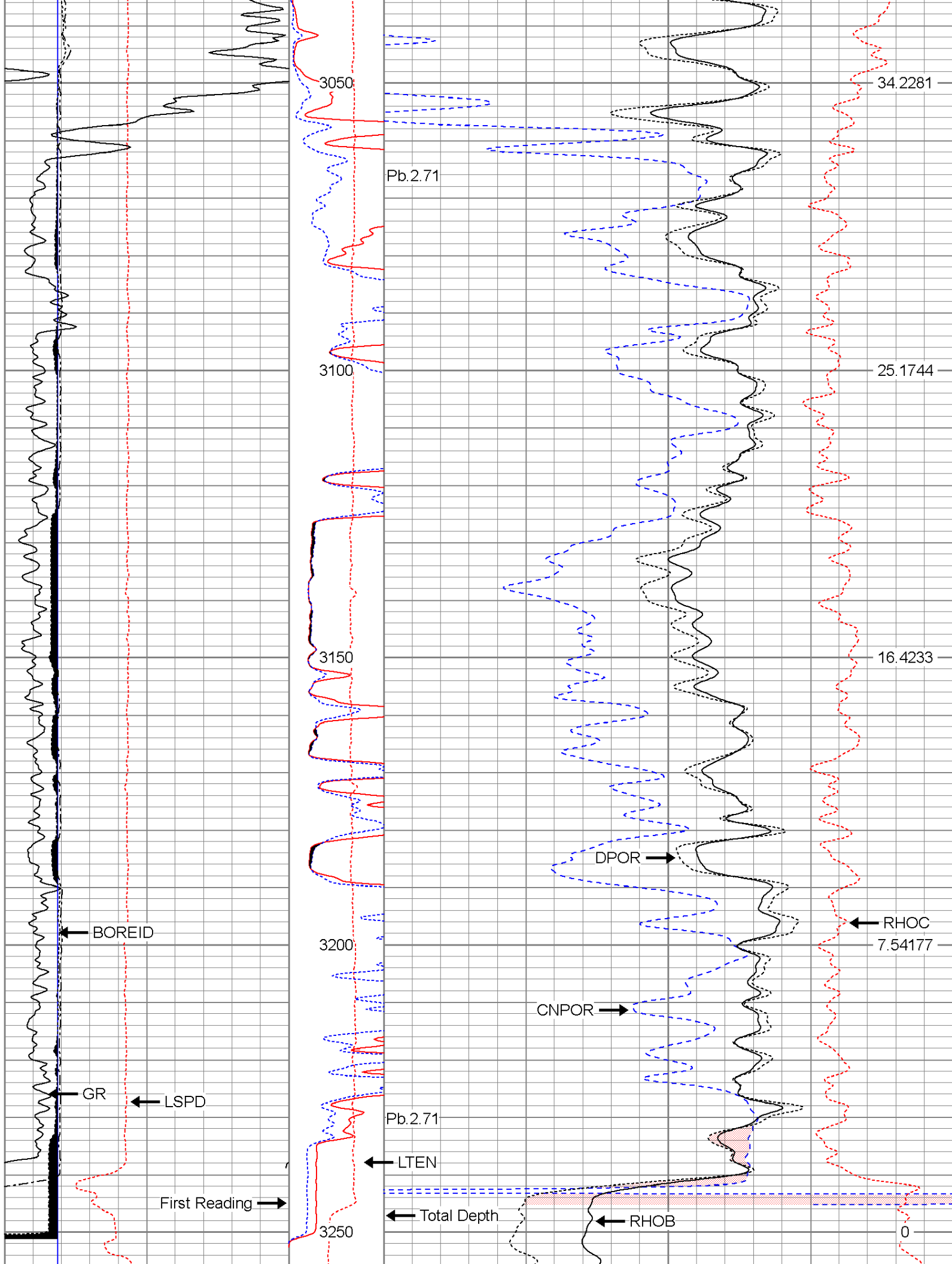












0	LSPD (ft/min)	-100	LTEN	30	CNPOR (pu)	-10	
0	GR (GAPI)	150	(lb)2500	30	DPOR (pu)	-10	
6	BOREID (in)	16	MN	2	RHOB (g/cc)	3	
6	MCAL (in)	16	(Ohm-m)		-0.25	RHOC (g/cc)	0.25
6	DCAL (in)	16	0	40			ABHV (ft3)
			MI				
			(Ohm-m)				
			0	40			

# Log Variables

Database: C:\Warrior\Data\redtail\_2.db  
 Dataset: Maddix/rEDTAIL\_2/Dig1/pass5.1

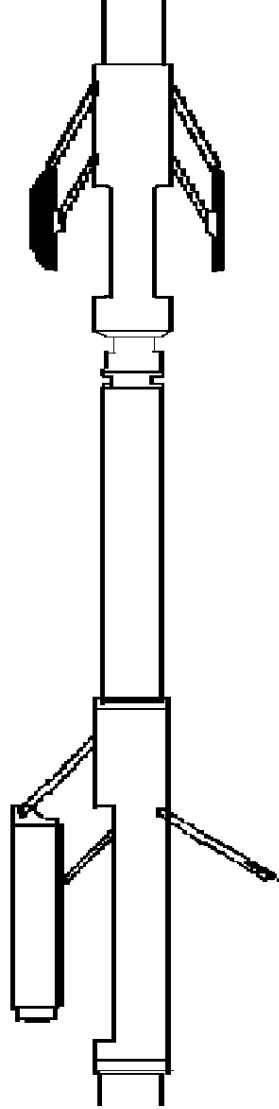
## Top - Bottom

CMTTKCOR	CSTKCOR	TMPCOR	SZCOR	CASED?	DE-CENT	NPORSEL	CMNTTHCK
Off	Off	On	On	No	No	Limestone	in 0
CASETHCK	FLUIDDEN	MATRXDEN	SPSHIFT	SNDERRM	SNDERR	SRFTEMP	CASEOD
in 0	g/cc 1	g/cc 2.71	mV 0	mmho/m -6	mmho/m 4	degF 0	in 5.5
PERFS	TDEPTH	BOTTEMP	BOREID				
0	ft 3247	degF 111	in 7.875				

Sensor	Offset (ft)	Schematic	Description	Len (ft)	OD (in)	Wt (lb)
GR	23.42		STNDRD Standard Cable Head	1.00	1.69	10.00
			GR-GEAR_A (GR2001) DIL	2.83	3.50	40.00
CNLSC	18.33		CNT-openhole (5001c) Gearhart Openhole Compensated Neutron	5.50	3.50	
CNSSC	17.33					

MCAL  
MI  
MN

10.50  
10.38  
10.29



MICRO-Probe (G-9052)

6.50      3.50      100.00

DCAL  
LSD  
SSD

2.50  
2.17  
1.83

CDL-GEAR\_A (2001)  
Gearhart Density

8.67      3.50      275.00

Dataset: redtail\_2.db: Maddix/rEDTAIL\_2/Dig1/pass5.1  
Total Length: 24.50 ft  
Total Weight: 425.00 lb  
O.D. 3.50 in