

MICRO LOG

Company WHITE EXPLORATION, INC.
 Well POWERS - BARLOW UNIT #1
 Field WILDCAT
 County FINNEY State KANSAS

Location: API #: 15-055-22498-0000
 2580' FNL & 1480' FEL
 SEC 5 TWP 22S RGE 34W
 Permanent Datum GROUND LEVEL Elevation 2984
 Log Measured From KELLY BUSHING 11' A.G.L.
 Drilling Measured From KELLY BUSHING
 Elevation
 K.B. 2995
 D.F. 2993
 G.L. 2984

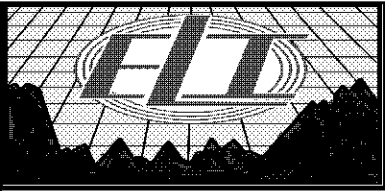
Date	9/5/18		
Run Number	TWO		
Depth Driller	5000		
Depth Logger	4999		
Bottom Logged Interval	4981		
Top Log Interval	3500		
Casing Driller	8 5/8" @ 1775'		
Casing Logger	1770		
Bit Size	7 7/8		
Type Fluid in Hole	CHEMICAL MUD	CHLORIDES 2800 PPM	
Density / Viscosity	9.2/59		
pH / Fluid Loss	10.5/8.0		
Source of Sample	FLOWLINE		
Rm @ Meas. Temp	1.0 @ 88F		
Rmt @ Meas. Temp	.75 @ 88F		
Rmc @ Meas. Temp	1.2 @ 88F		
Source of Rmf / Rmc	MEASUREMENT		
Rm @ BHT	.70 @ 126F		
Time Circulation Stopped	2 HOURS		
Time Logger on Bottom	////		
Maximum Recorded Temperature	125F		
Equipment Number	3802		
Location	HAYS, KANSAS		
Recorded By	JASON CAPPELLUCCI		
Witnessed By	ANDY WHITE		

<<< Fold Here >>>

All interpretations are opinions based on inferences from electrical or other measurements and we cannot and do not guarantee the accuracy or correctness of any interpretation, and we shall not, except in the case of gross or willful negligence on our part, be liable or responsible for any loss, costs, damages, or expenses incurred or sustained by anyone resulting from any interpretation made by any of our officers, agents or employees. These interpretations are also subject to our general terms and conditions set out in our current Price Schedule.

Comments

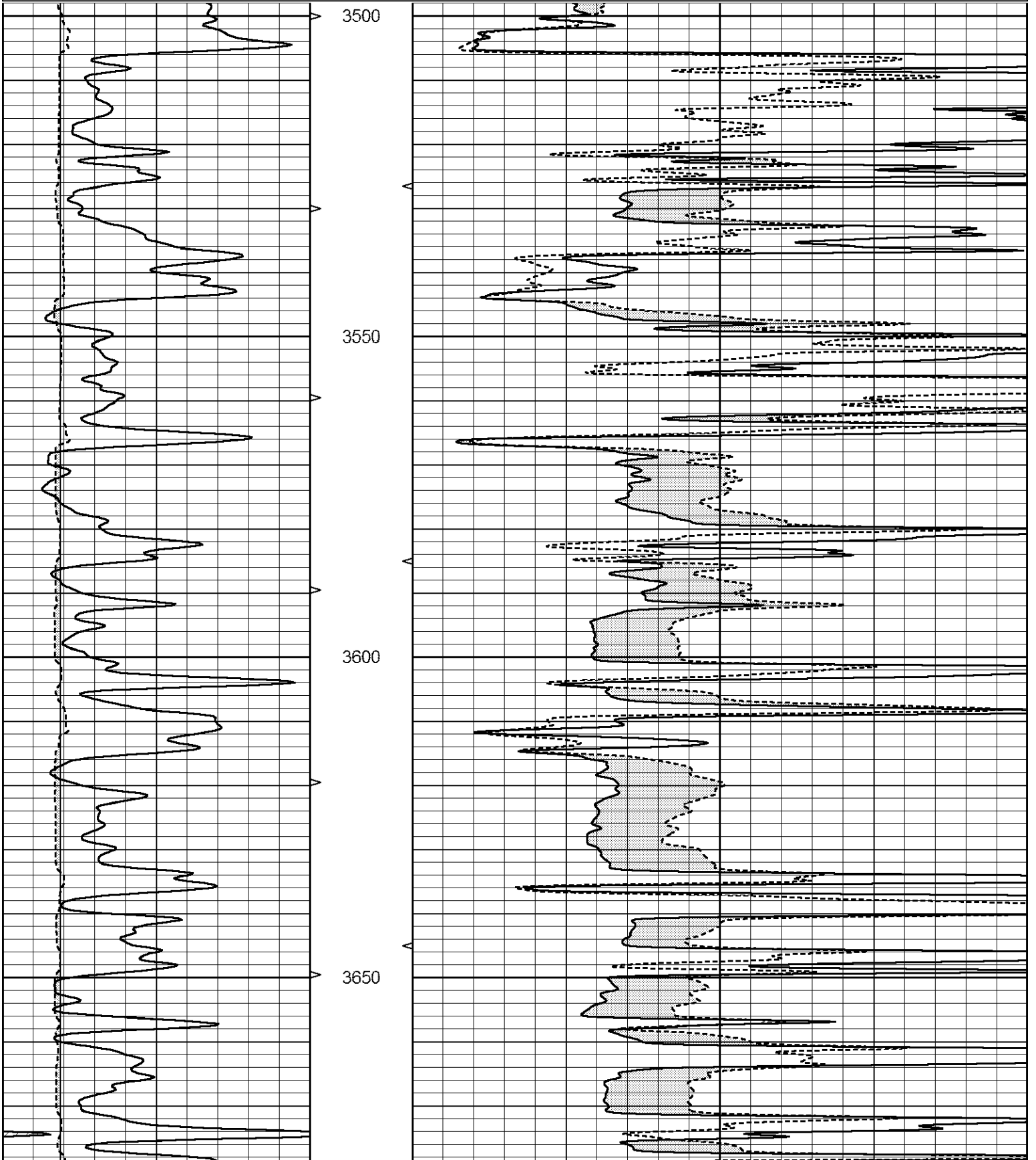
THANK YOU FOR USING ELI WIRELINE SERVICES, HAYS, KS. (785) 628-6395
 DIRECTIONS
 SCOTT CITY, KS. - 18 SOUTH TO GANO RD. - 11 WEST TO BYRD RD.
 1 1/2 SOUTH - EAST INTO

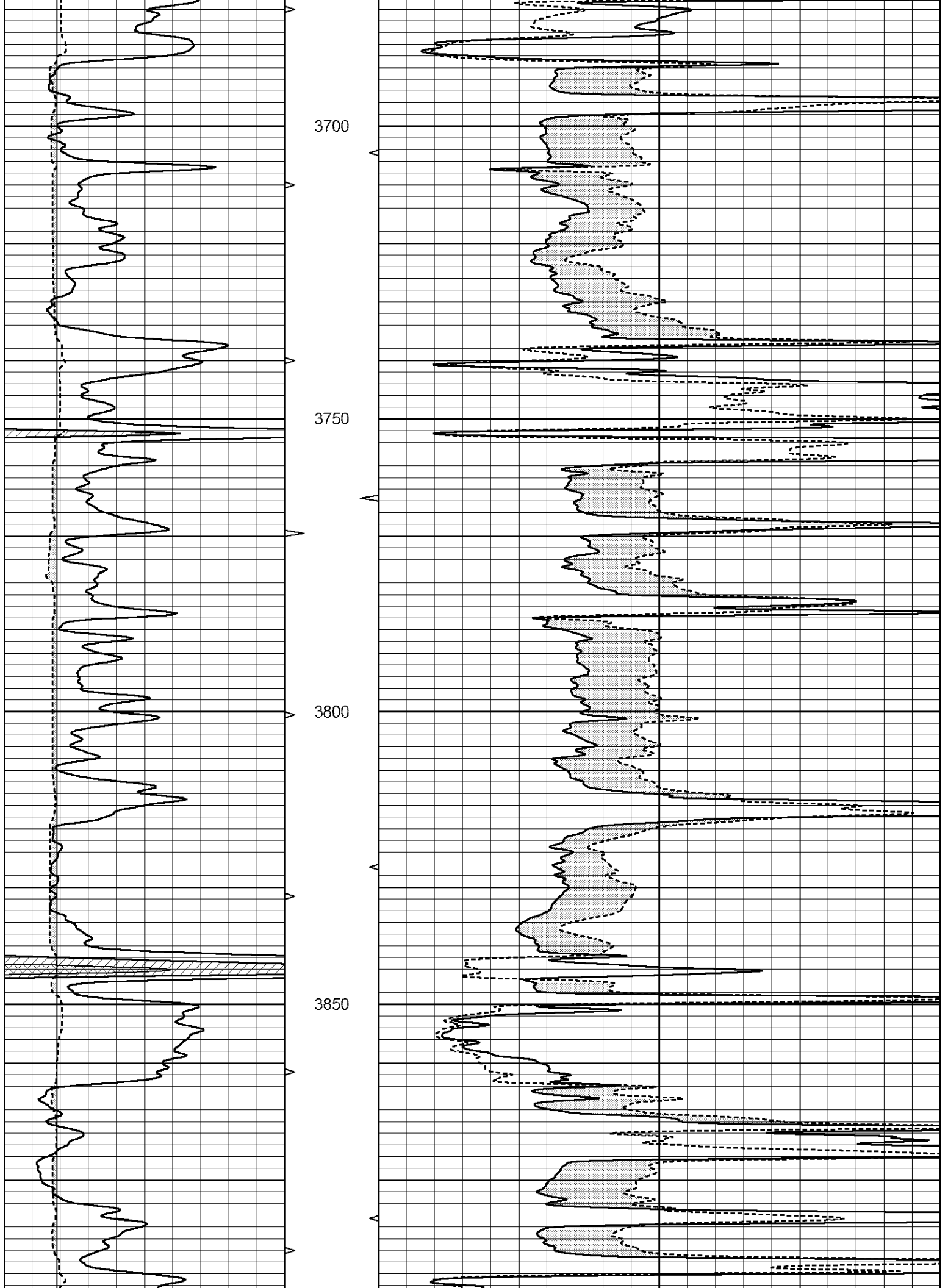


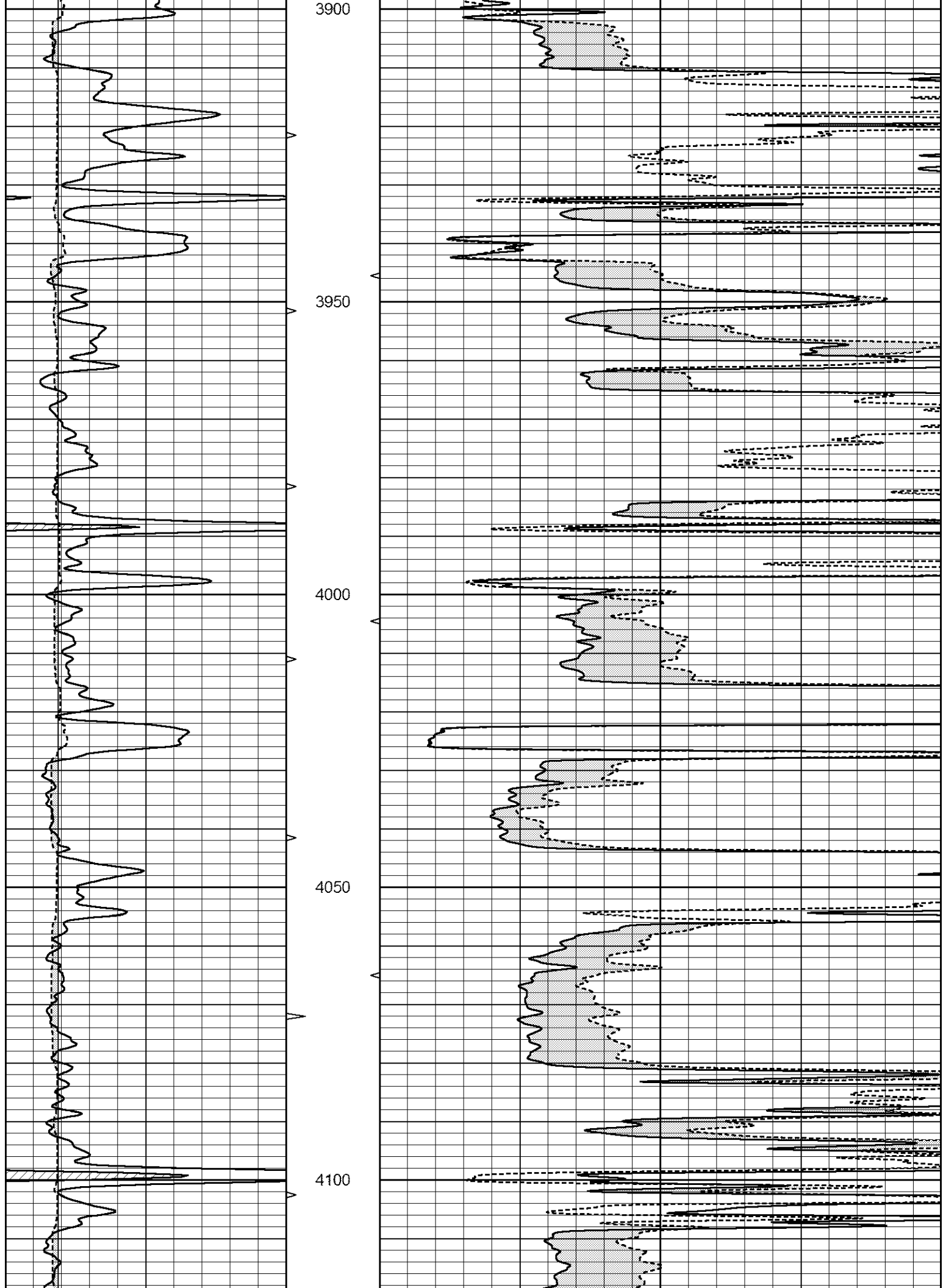
MAIN SECTION

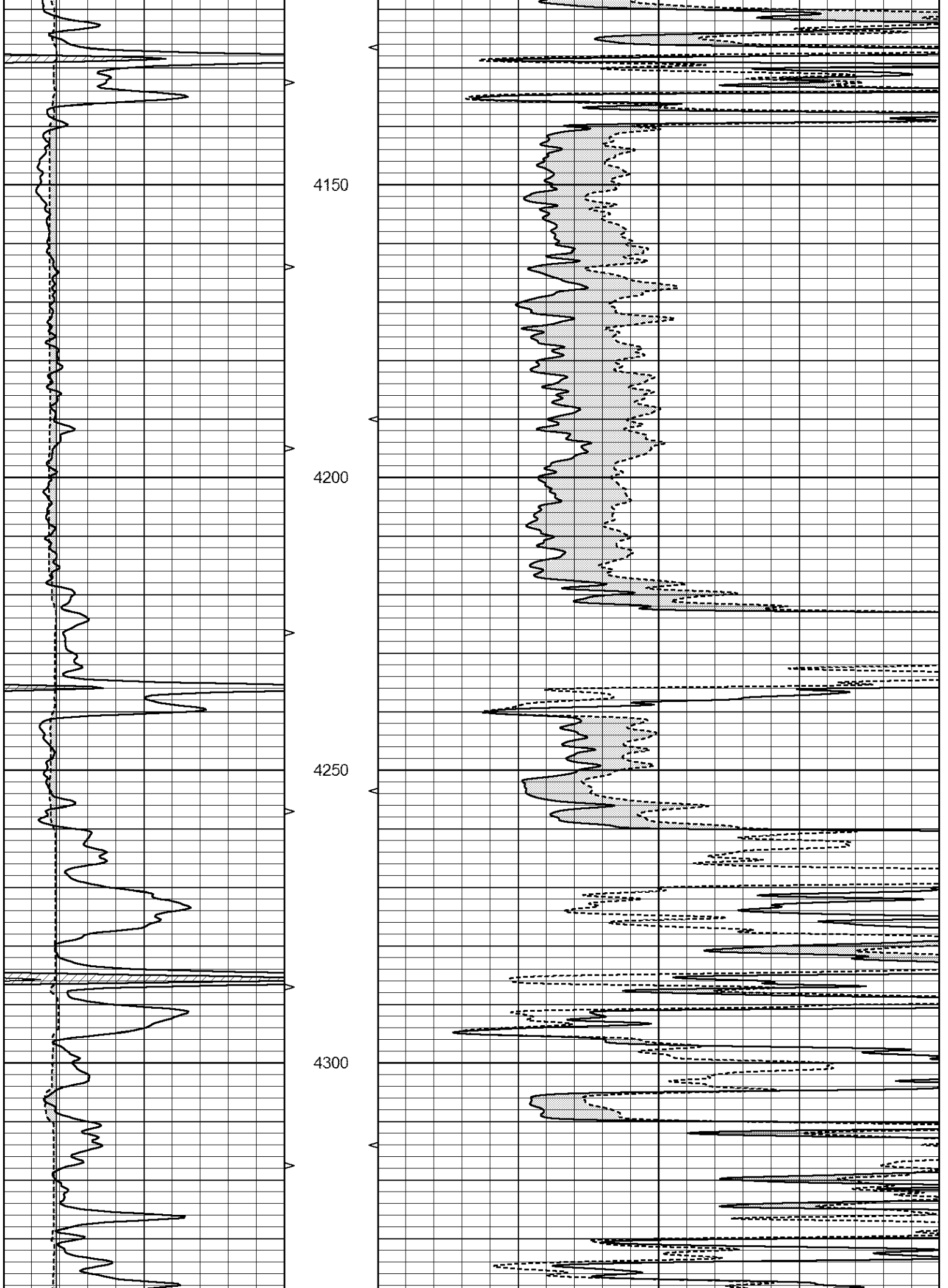
Database File 3002pe8.db
 Dataset Pathname pass6.1
 Presentation Format _micro
 Dataset Creation Wed Sep 05 18:57:55 2018
 Charted by Depth in Feet scaled 1:240

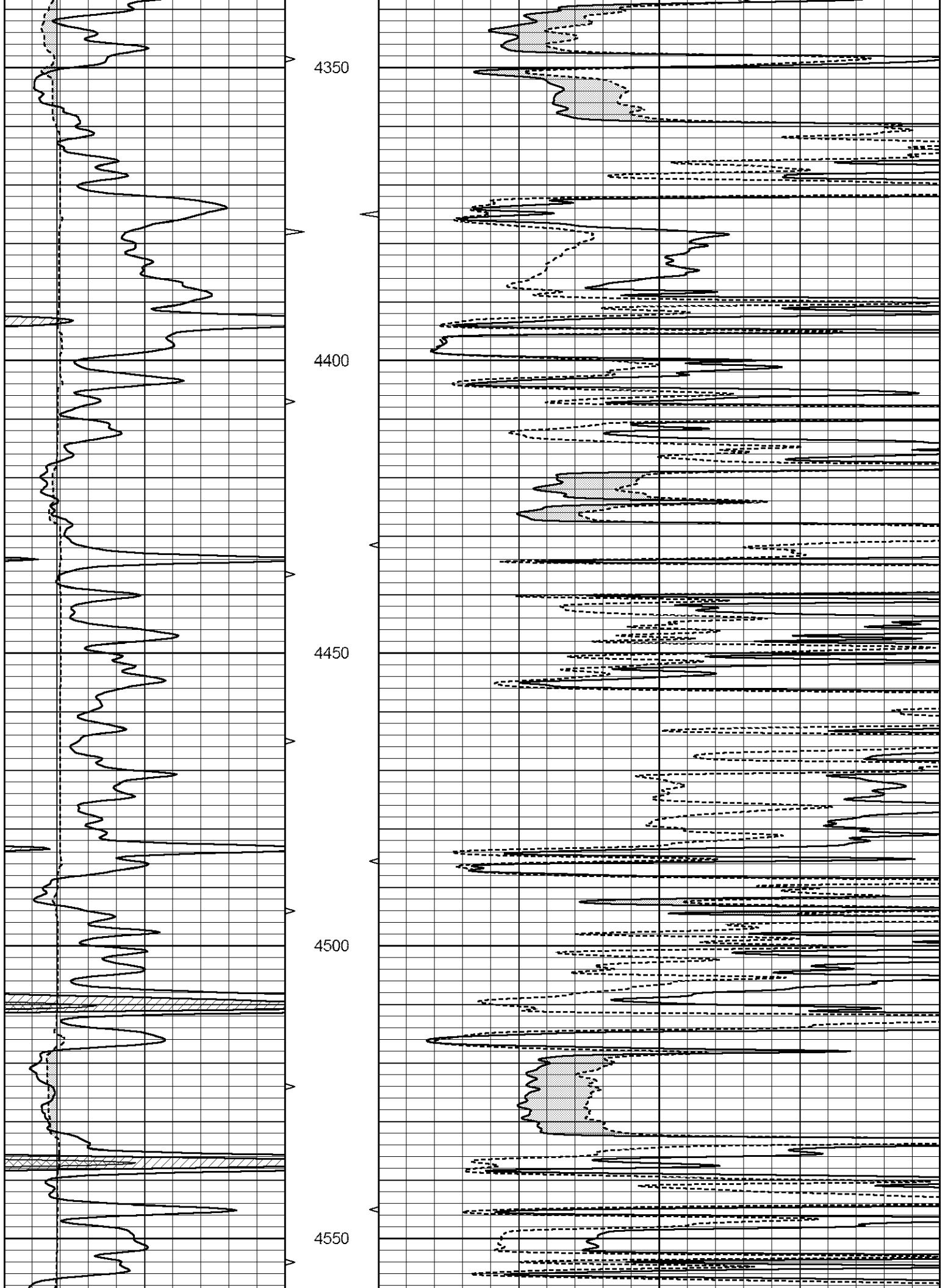
0	GAMMA RAY (GAPI)	150	ABHV	0	MEL1.5 (Ohm-m)	40
6	CALIPER (in)	16	10 (ft3)	0 0	MEL2.0 (Ohm-m)	40
			TBHV			
			0 (ft3)	10		

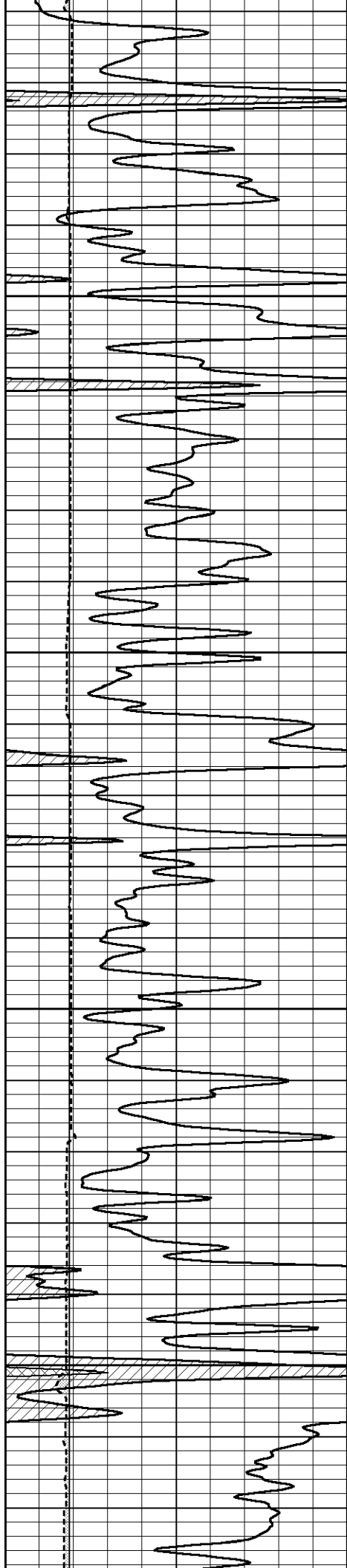










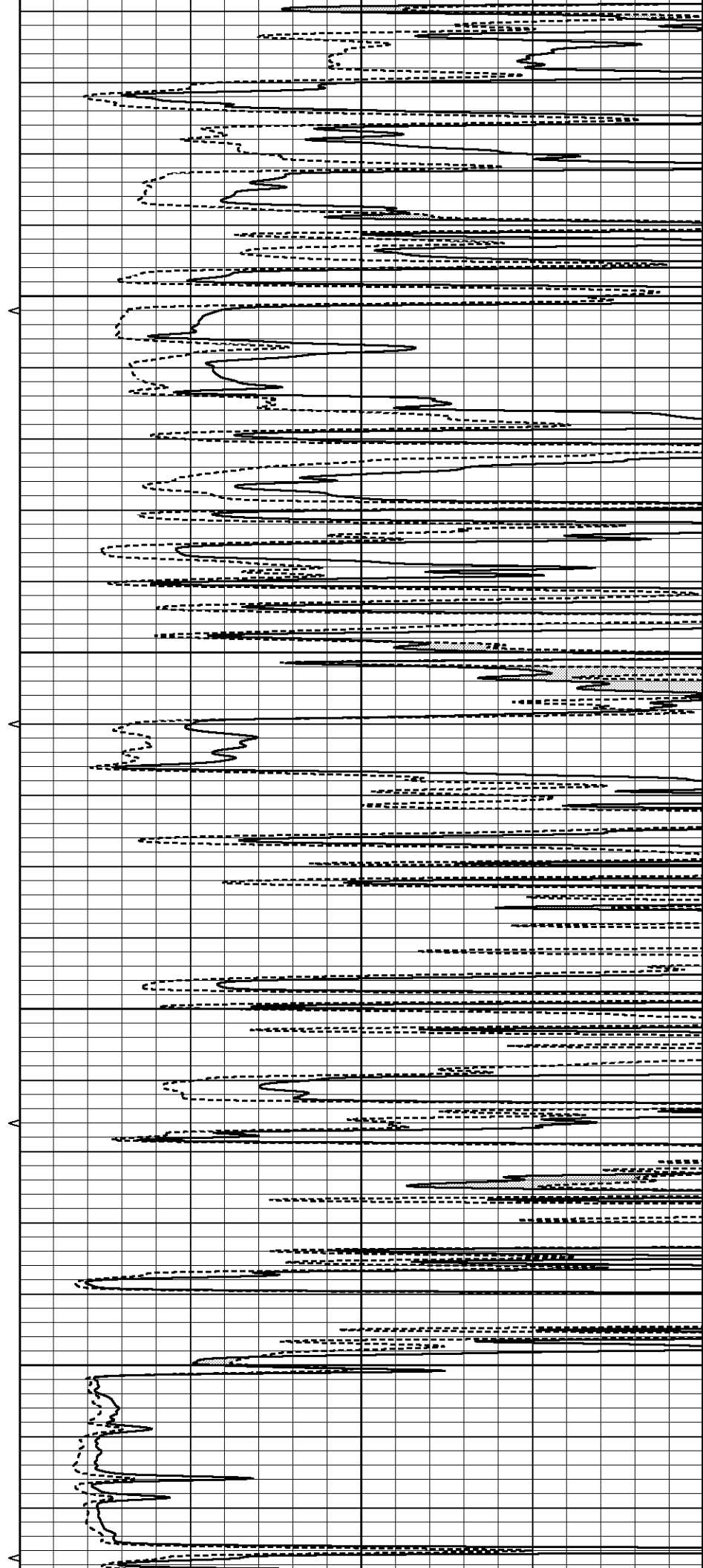


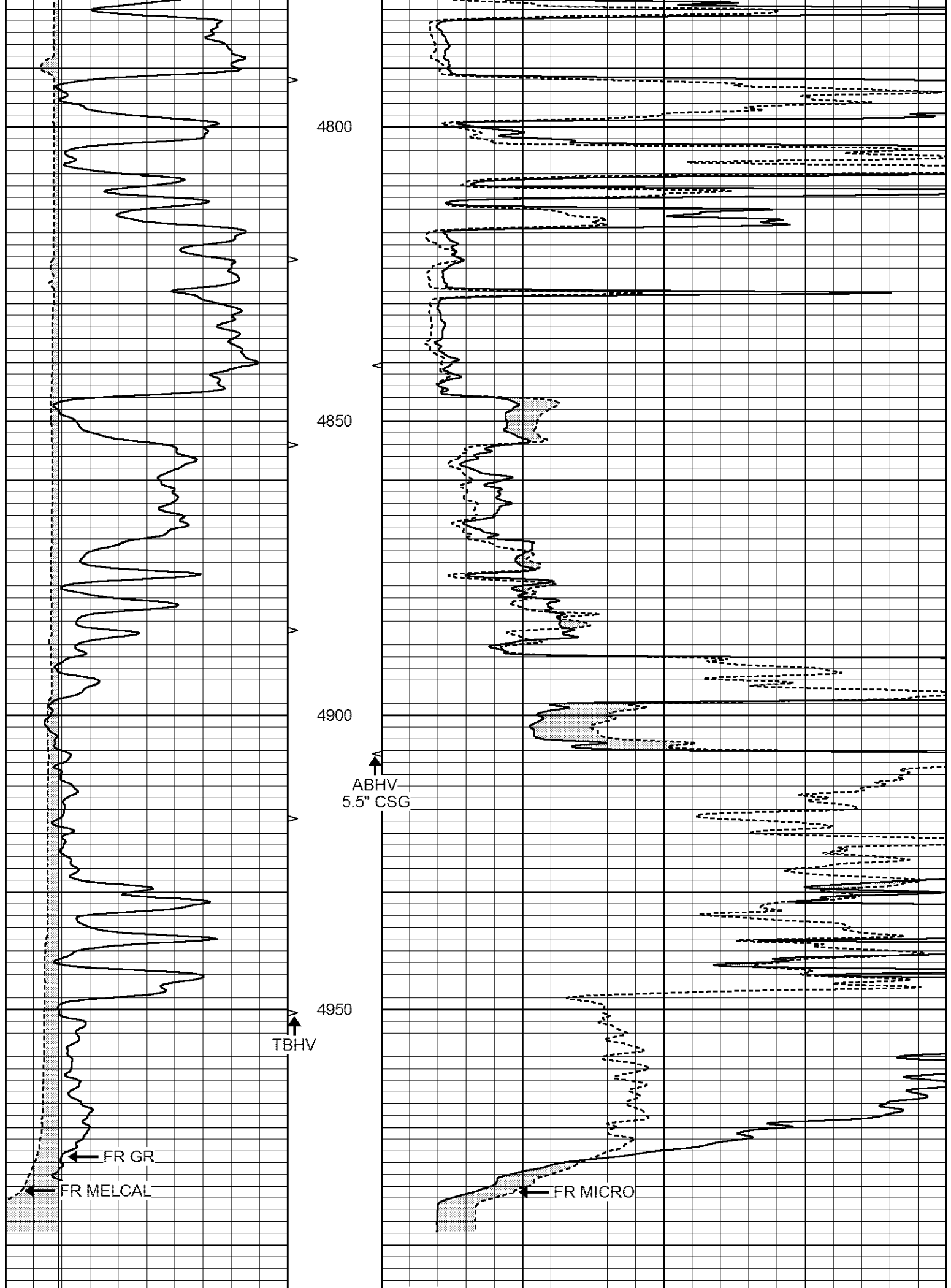
4600

4650

4700

4750





4800

4850

4900

4950

↑
ABHV
5.5" CSG

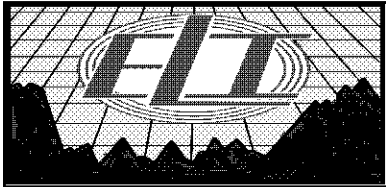
↑
TBHV

← FR GR

← FR MELCAL

← FR MICRO

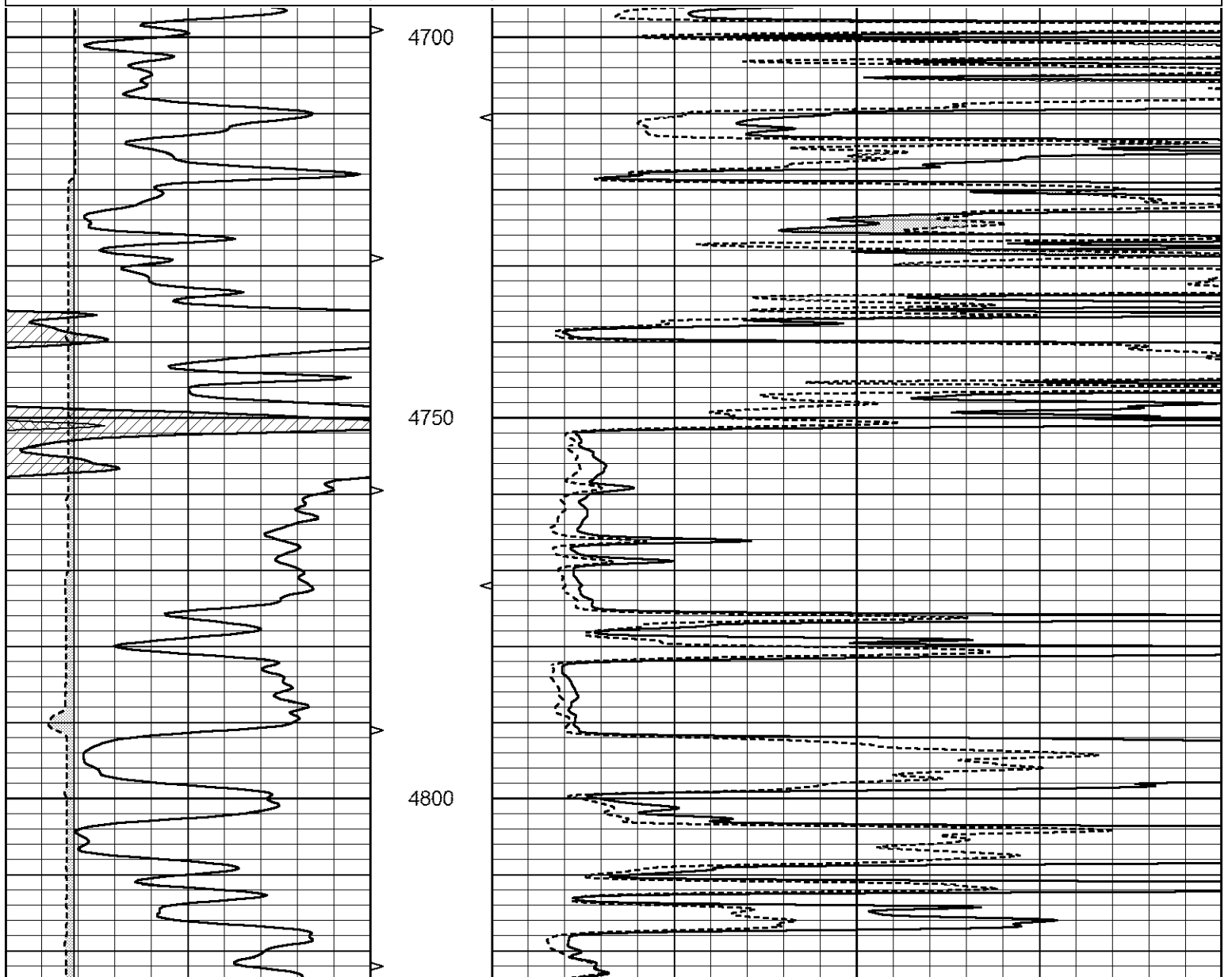
		5000		LTD 4999		
0	GAMMA RAY (GAPI)	150	ABHV	0	MEL1.5 (Ohm-m)	40
6	CALIPER (in)	16	10 (ft3)	0 0	MEL2.0 (Ohm-m)	40
		TBHV				
		0 (ft3) 10				

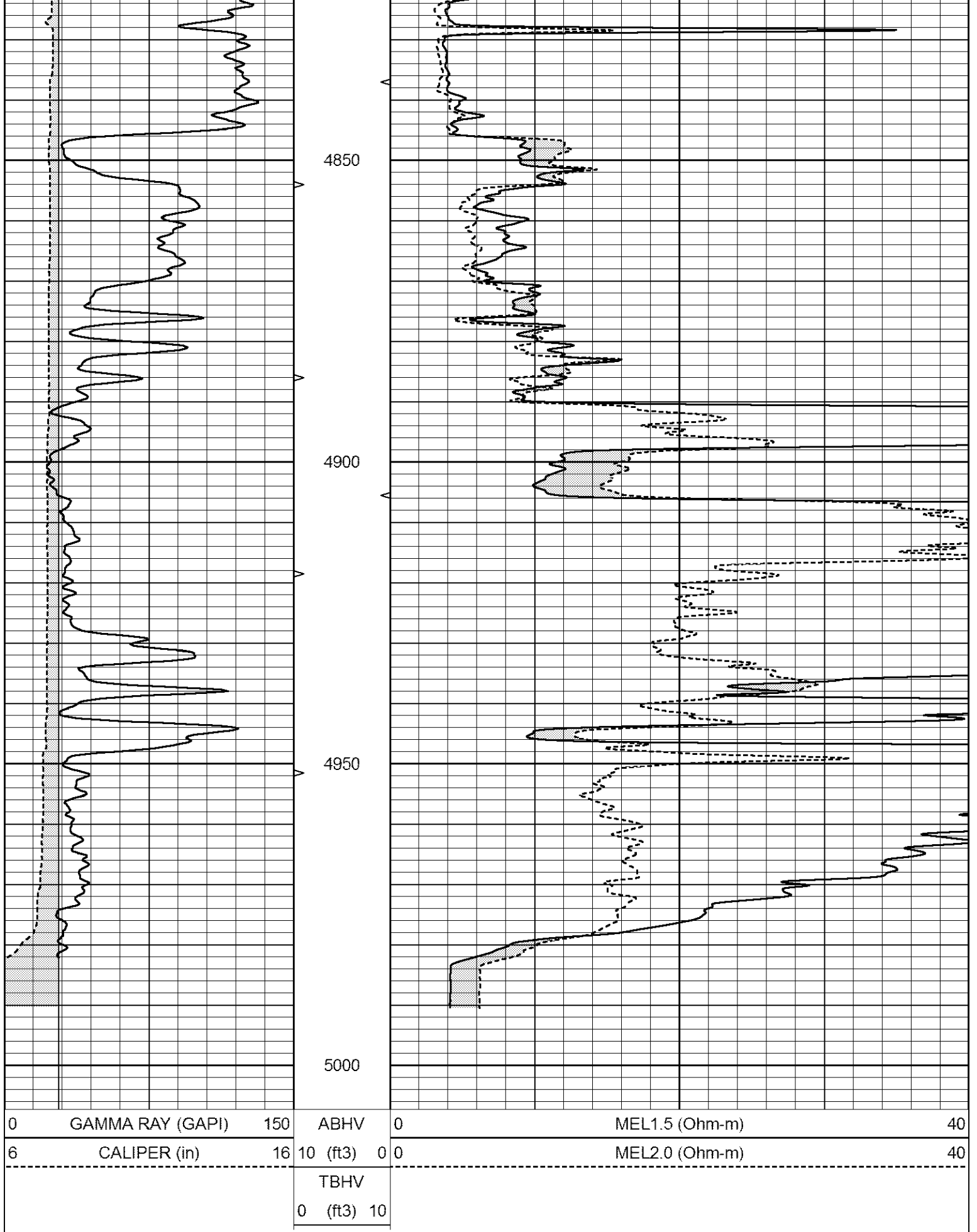


REPEAT SECTION

Database File 3002pe8.db
 Dataset Pathname pass5.1
 Presentation Format _micro
 Dataset Creation Wed Sep 05 18:46:43 2018
 Charted by Depth in Feet scaled 1:240

0	GAMMA RAY (GAPI)	150	ABHV	0	MEL1.5 (Ohm-m)	40
6	CALIPER (in)	16	10 (ft3)	0 0	MEL2.0 (Ohm-m)	40
		TBHV				
		0 (ft3) 10				





Calibration Report

Database File 3002pe8.db
 Dataset Pathname pass5 1

MICRO_USR Calibration Report

Serial Number: 070910
 Tool Model: ProbeL
 Performed: Fri Aug 03 23:13:00 2018

Caliper Calibration: Gain=7.336 Offset=3.017
 References Low Cal 8.000 High Cal 14.000
 Readings 0.652 1.470

1.5" Calibration: Gain=55.000 Offset=-0.067
 References Low Cal 0.000 High Cal 20.000
 Readings 0.004 1.335

2" Calibration: Gain=75.000 Offset=-0.779
 References Low Cal 0.000 High Cal 20.000
 Readings 0.004 1.029

Microlog Calibration Report

Serial-Model: 070910-ProbeL
 Performed: (Not Performed)

	Readings			References			Results	
	Zero	Cal		Zero	Cal		m	b
Normal	0.0000	1.0000	V	0.0000	1.0000	Ohm-m	1.0000	0.0000
Inverse	0.0000	1.0000	V	0.0000	1.0000	Ohm-m	1.0000	0.0000
Caliper	0.0000	1.0000	V	0.0000	1.0000	in	1.0000	0.0000

Gamma Ray Calibration Report

Serial Number: 7
 Tool Model: Probe1
 Performed: Wed Jun 29 11:10:58 2016

Calibrator Value: 1.0 GAPI
 Background Reading: 0.0 cps
 Calibrator Reading: 1.0 cps
 Sensitivity: 0.2700 GAPI/cps