



**CEMENT  
BOND  
LOG**

Company	Mikol Oil LLC.	Company	Mikol Oil LLC.
Well	Brummitt #4-33	Well	Brummitt #4-33
Field	Unnamed	Field	Unnamed
County	Rooks	County	Rooks
State	Kansas	State	Kansas
Location:	675' FNL & 1981' FEL	API #:	15 163 24365
Permanent Datum	SEC 33 TWP 10S RGE 17W	Ground Level	Elevation 2081'
Log Measured From	KB 8' AGL	Elevation	2081'
Drilling Measured From	KB	Other Services	CBL
		Elevation	K.B. 2089' D.F. 2088' G.L. 2081'

Date	7-27-18
Run Number	One
Depth Driller	3758'
Depth Logger	3729'
Bottom Logged Interval	3729'
Top Log Interval	2380'
Open Hole Size	7 7/8"
Type Fluid	Water
Density / Viscosity	////
Max. Recorded Temp.	////
Estimated Cement Top	Surface
Time Well Ready	Portable Mast
Time Logger on Bottom	3:30 p.m.
Equipment Number	T-968
Location	Hays, KS
Recorded By	Phoenix Jenkins
Witnessed By	

Borehole Record				Tubing Record			
Run Number	Bit	From	To	Size	Weight	From	To
Casing Record	Size	Wd/Ft	Top	Bottom			
Surface String	8 5/8"		0	219'			
Prot. String							
Production String							
Liner							

<<< Fold Here >>>

All interpretations are opinions based on inferences from electrical or other measurements and we cannot and do not guarantee the accuracy or correctness of any interpretation, and we shall not, except in the case of gross or willful negligence on our part, be liable or responsible for any loss, costs, damages, or expenses incurred or sustained by anyone resulting from any interpretation made by any of our officers, agents or employees. These interpretations are also subject to our general terms and conditions set out in our current Price Schedule.

**Comments**

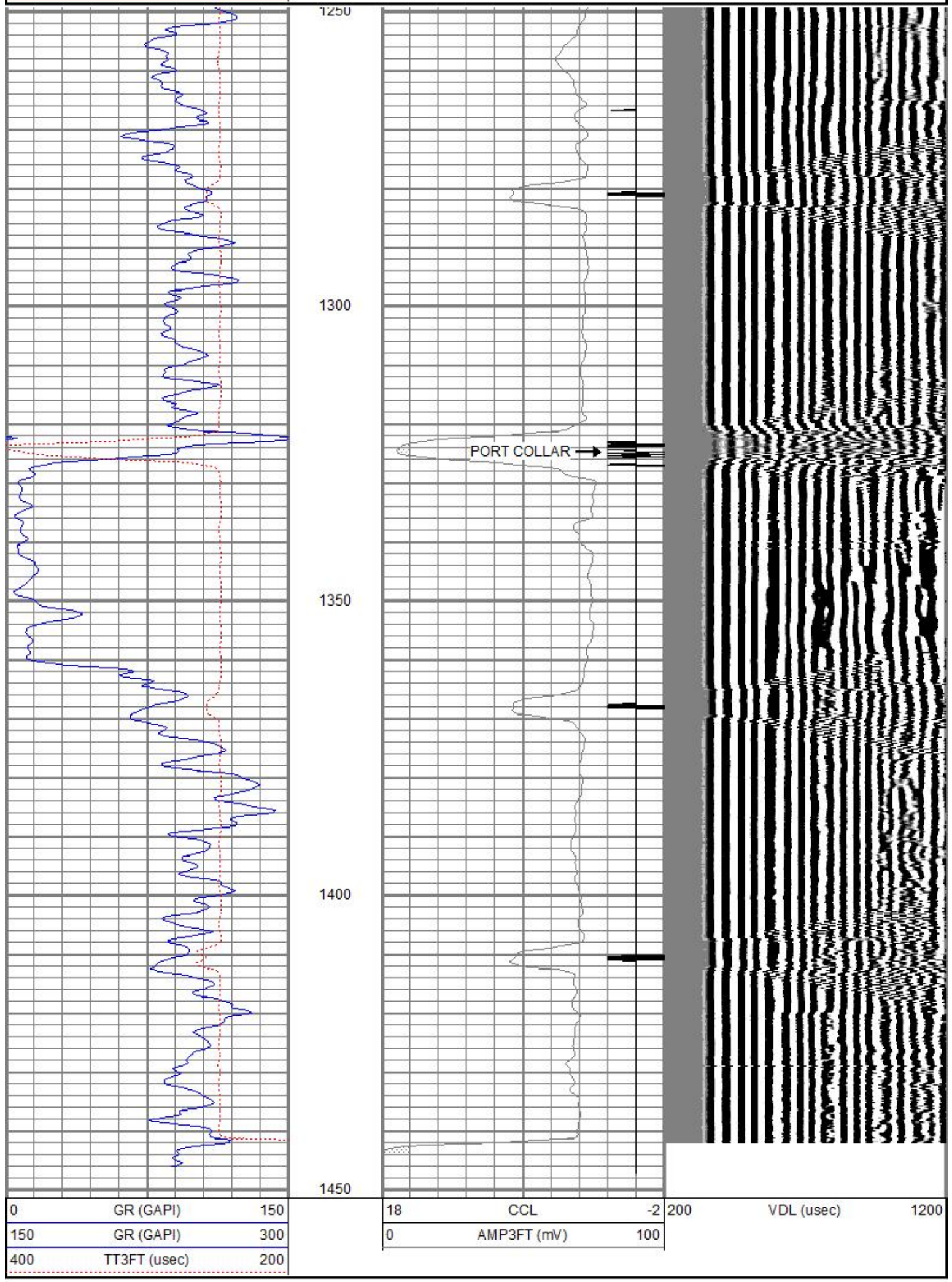
North 183 to Saline River Rd. East 5.4 mi to 22 Rd.(310ave)  
 (Metal Cowboy holding cup by tank bat.)  
 North 3.5 Mi. West into lease rd.  
 Right turn at shed through cattle guard, up hill once to pumping unit.  
 Thank You for Using Gemini Wireline LLC.  
 785-625-1182



# MAIN PASS

Database File: mobrummyt#4-33cbl.db  
 Dataset Pathname: pass3  
 Presentation Format: cbl  
 Dataset Creation: Fri Jul 27 16:13:47 2018  
 Charted by: Depth in Feet scaled 1:240

0	GR (GAPI)	150	18	CCL	-2	200	VDL (usec)	1200
150	GR (GAPI)	300	0	AMP3FT (mV)	100			
400	TT3FT (usec)	200						

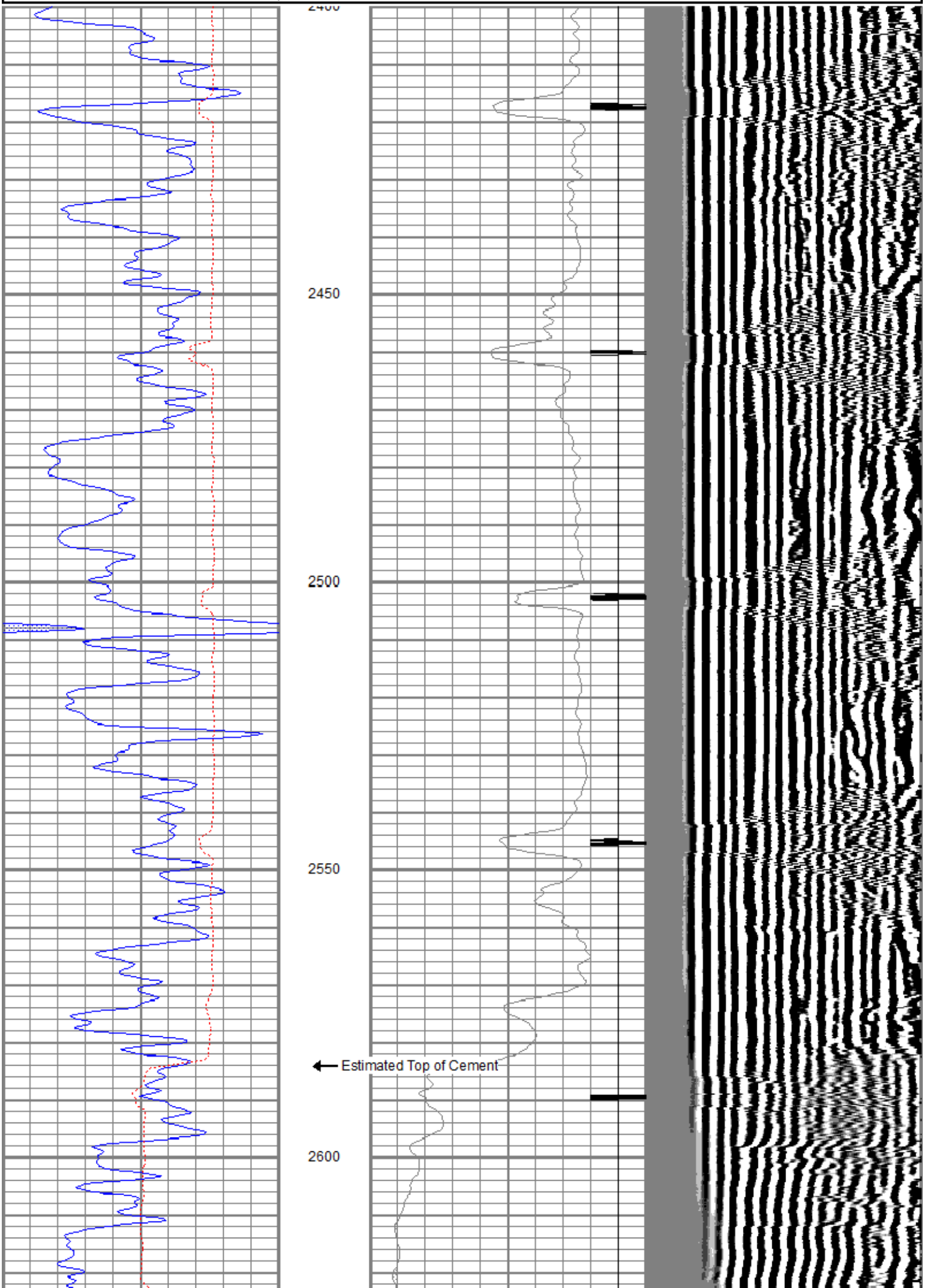


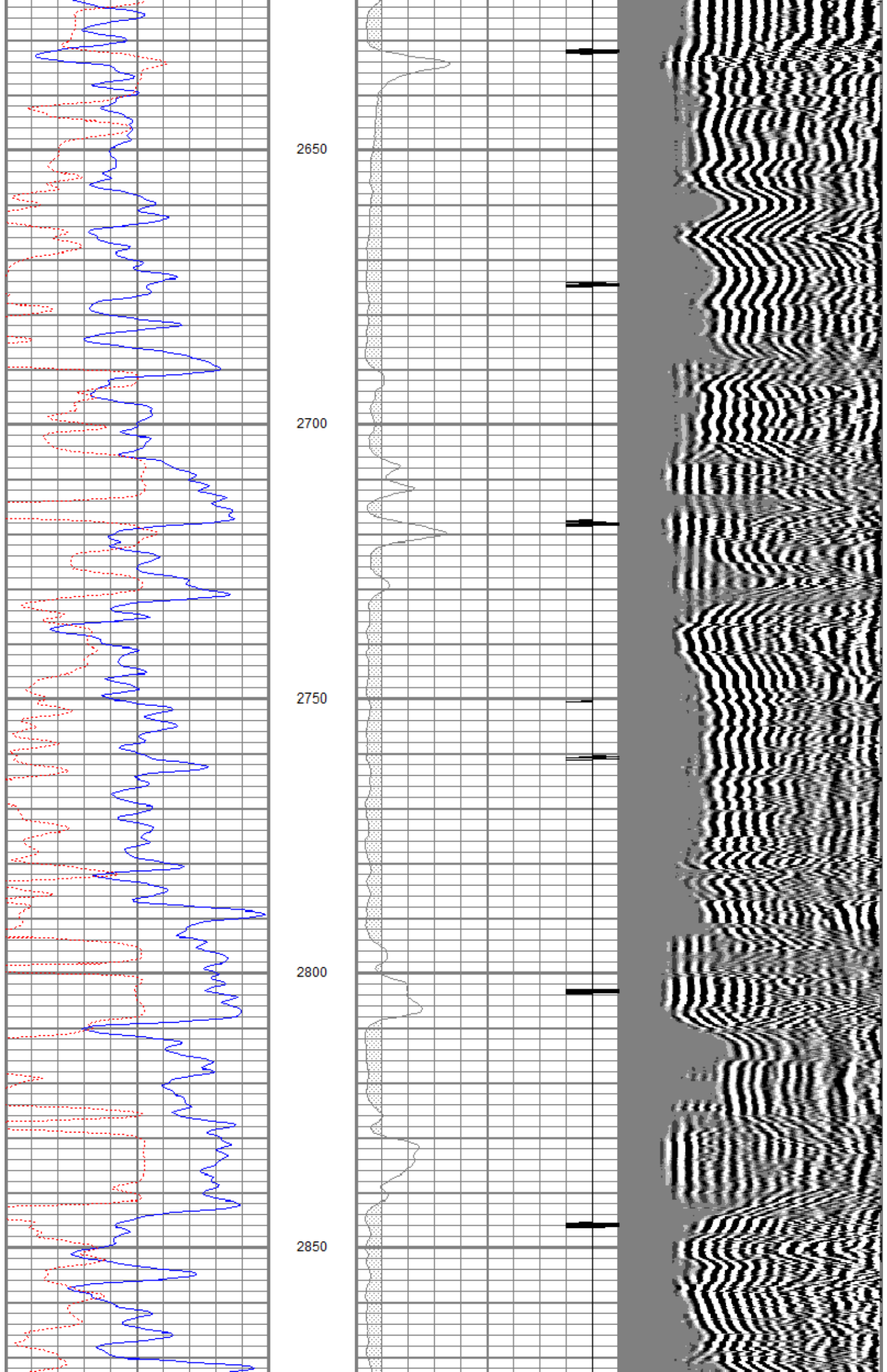
# MAIN PASS

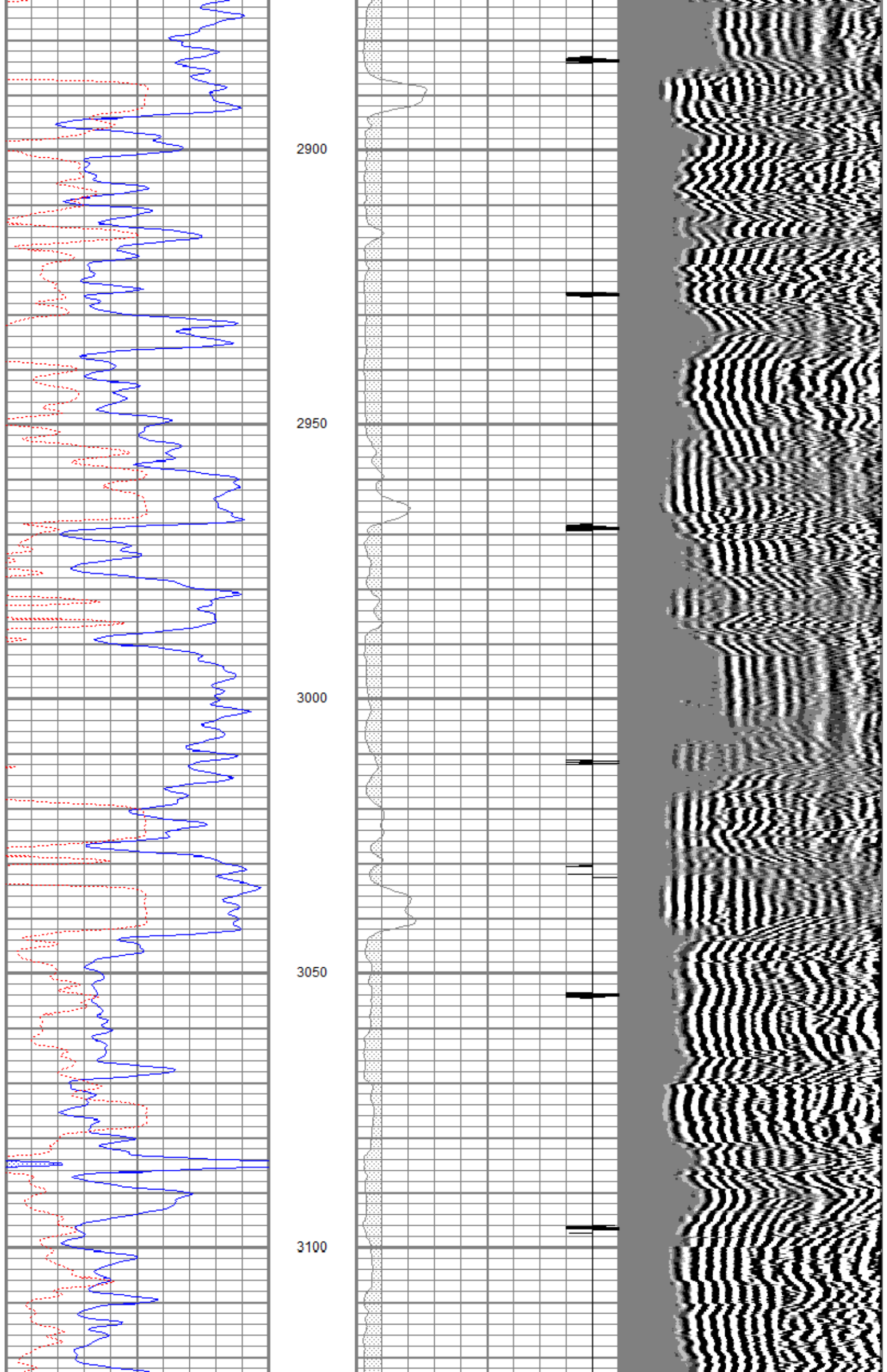
0	GR (GAPI)	150
150	GR (GAPI)	300
400	TT3FT (usec)	200

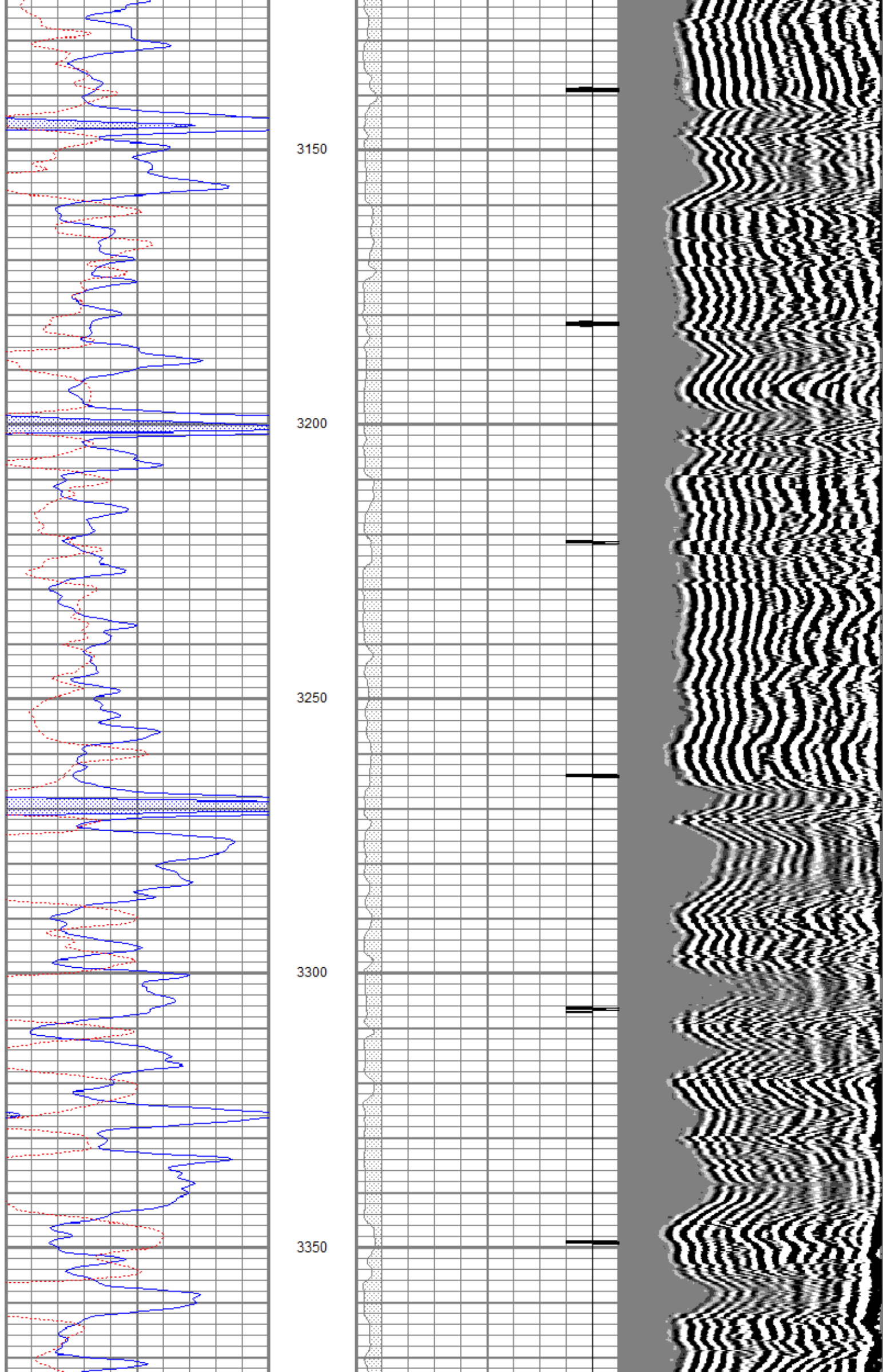
18	CCL	-2
0	AMP3FT (mV)	100

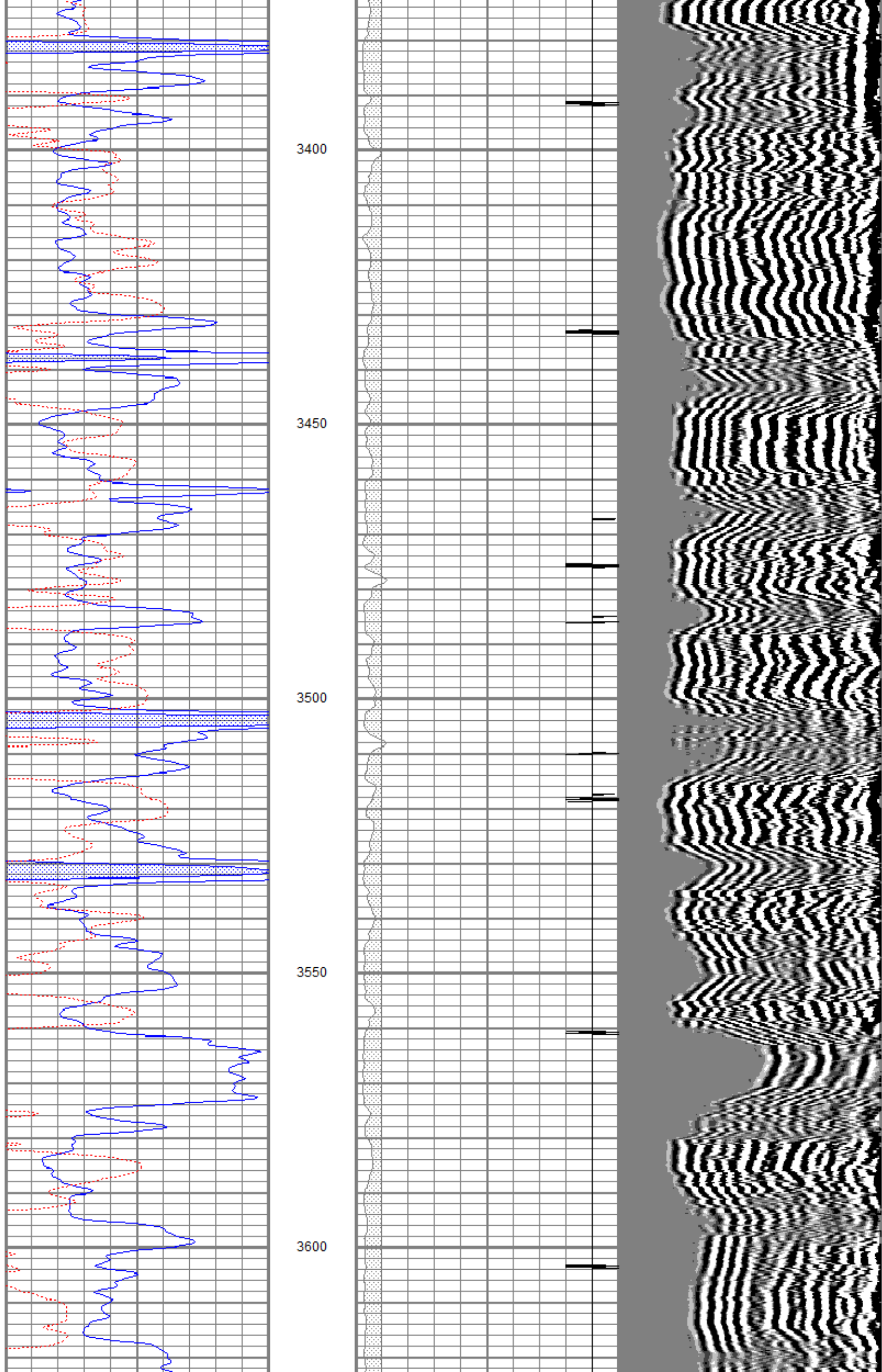
200 VDL (usec) 1200

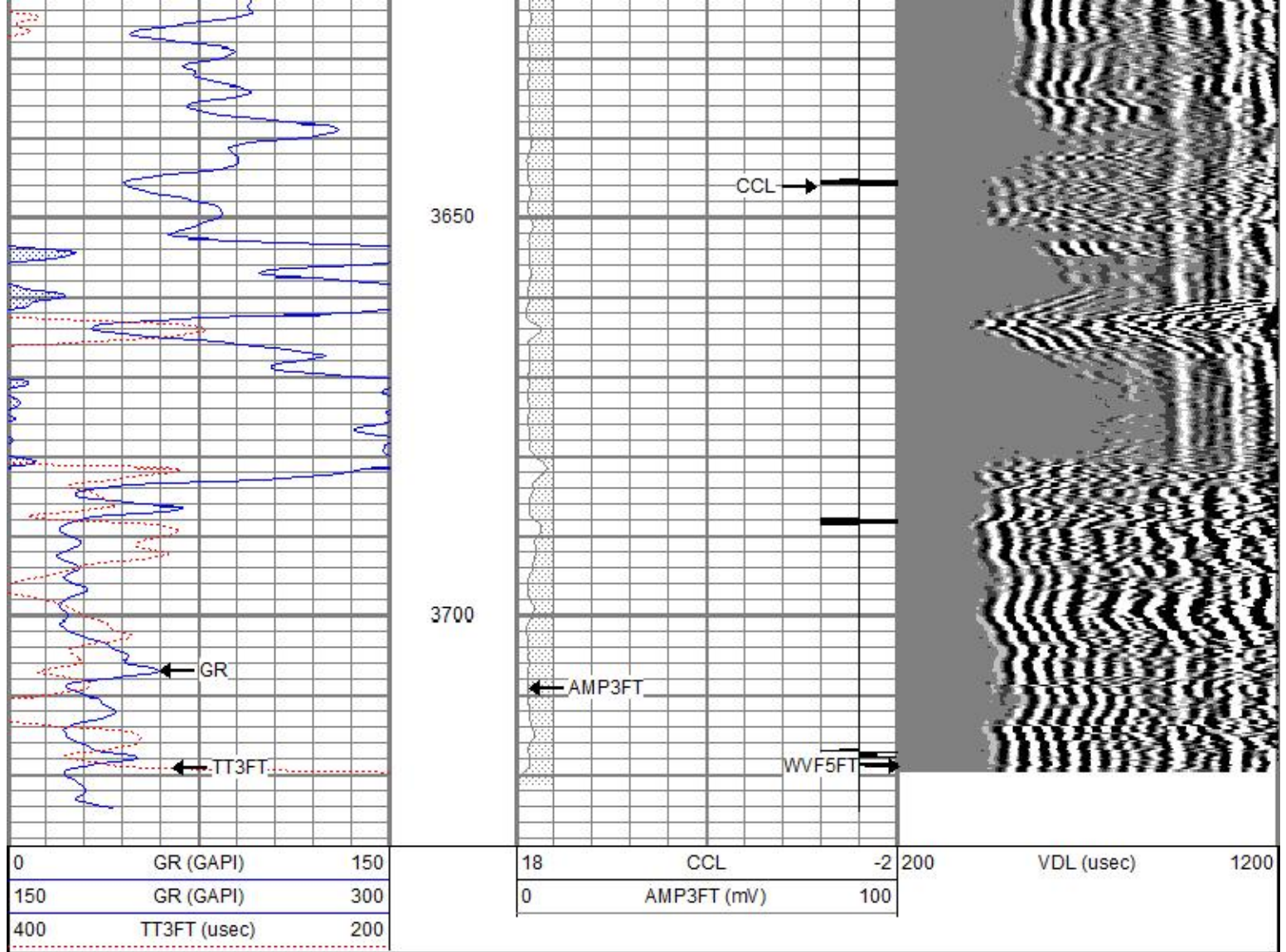












# REPEAT PASS

Database File mobrummitt#4-33cbl.db  
 Dataset Pathname pass1  
 Presentation Format cbl  
 Dataset Creation Fri Jul 27 15:33:42 2018  
 Charted by Depth in Feet scaled 1:240

0	GR (GAPI)	150	18	CCL	-2	200	VDL (uSec)	1200
150	GR (GAPI)	300	0	AMP3FT (mV)	100			
400	TT3FT (uSec)	200						

0	GR (GAPI)	150	18	CCL	-2	200	VDL (uSec)	1200
150	GR (GAPI)	300	0	AMP3FT (mV)	100			
400	TT3FT (uSec)	200						

## Calibration Report

Database File mobrummitt#4-33cbl.db  
 Dataset Pathname pass2  
 Dataset Creation Fri Jul 27 15:45:16 2018

## Gamma Ray Calibration Report

Serial Number: 080224  
 Tool Model: Probe1  
 Performed: Wed Nov 22 15:15:53 2017

Calibrator Value: 200.0 GAPI

Background Reading: 15.0 cps

Background Reading: 15.0 cps  
 Calibrator Reading: 222.7 cps  
 Sensitivity: 1.0000 GAPI/cps

Segmented Cement Bond Log Calibration Report

Serial Number: G  
 Tool Model: DigitalCBL  
 Calibration Casing Diameter: 5.500 in  
 Calibration Depth: 1499.351 ft

Master Calibration, performed Fri Jul 27 15:26:04 2018:

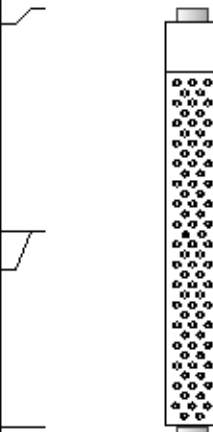
	Raw (v)		Calibrated (mv)		Results	
	Zero	Cal	Zero	Cal	Gain	Offset
3'	0.007	0.841	1.000	71.921	85.049	0.433
CAL						
5'	0.007	0.674	1.000	71.921	106.355	0.290
SUM						
S1						
S2						
S3						
S4						
S5						
S6						
S7						
S8						

Internal Reference Calibration, performed (Not Performed):

	Raw (v)		Calibrated (v)		Results	
	Zero	Cal	Zero	Cal	Gain	Offset
CAL						

Air Zero Calibration, performed Wed Mar 30 11:03:14 2016:

	Raw (v)		Calibrated (v)		Results	
	Zero		Zero		Offset	
3'	0.000		0.000		0.000	
5'	0.000		0.000		0.000	
SUM						
S1						
S2						
S3						
S4						
S5						
S6						
S7						
S8						

Sensor	Offset (ft)	Schematic	Description	Length (ft)	O.D. (in)	Weight (lb)
CENT	13.93		CENT-rub	0.33	1.75	0.80
WVF5FT	9.08		Probedig-DigitalCBL (G)	8.77	2.75	92.00
WVF3FT	9.08		2 3/4 Bond Tool			
CENT	4.83		CENT-rub	0.33	1.75	0.80
CCL	3.67		CCL-Probe (080224)	1.42	2.75	20.00
GR	2.30		GR Probe1 (080224)	2.00	2.75	40.00

GR-PIUbe 1 (060224)

3.06

2.75

40.00

Dataset:	mobrummitt#4-33cbl.db: field/well/run1/pass3
Total length:	13.93 ft
Total weight:	153.60 lb
O.D.:	2.75 in