



**MICRO
RESISTIVITY
LOG**

Company Mikol Oil LLC.
Well Brummitt #4-33
Field Unnamed
County Rooks
State Kansas

Company Mikol Oil LLC.
Well Brummitt #4-33
Field Unnamed
County Rooks State Kansas

Location: 675' FNL & 1981' FEL
API #: 15 163 24365
SEC 33 TWP 10S RGE 17W
Permanent Datum Ground Level Elevation 2081'
Log Measured From KB 8' AGL
Drilling Measured From KB

Other Services
CDNL
DIL
Elevation
K.B. 2089'
D.F. 2088'
G.L. 2081'

Date	7-15-18
Run Number	Two
Depth Driller	3758'
Depth Logger	3756'
Bottom Logged Interval	3754'
Top Log Interval	2900'
Casing Driller	8 5/8" @ 219'
Casing Logger	219'
Bit Size	7 7/8"
Type Fluid in Hole	Chemical
Density / Viscosity	8.9/42
pH / Fluid Loss	8.9/10.0
Source of Sample	Pit
Rm @ Meas. Temp	0.6@88degf
Rmf @ Meas. Temp	0.5@88degf
Rmc @ Meas. Temp	0.8@88degf
Source of Rmf / Rmc	Calculated
Rm @ BHT	0.5@107degf
Time Circulation Stopped	4:15 a.m
Time Logger on Bottom	9:10 a.m
Maximum Recorded Temperature	107degf
Equipment Number	T127
Location	Hays, KS
Recorded By	C. Patterson
Witnessed By	Mr. Marc Downing

<<< Fold Here >>>

All interpretations are opinions based on inferences from electrical or other measurements and we cannot and do not guarantee the accuracy or correctness of any interpretation, and we shall not, except in the case of gross or willful negligence on our part, be liable or responsible for any loss, costs, damages, or expenses incurred or sustained by anyone resulting from any interpretation made by any of our officers, agents or employees. These interpretations are also subject to our general terms and conditions set out in our current Price Schedule.

Comments

North 183 To Saline River Rd. Then East 5.4 mi to 22Rd.(310th Ave.),
(metal Cowboy holding cup by Tank Batteries)
Then North 3.5 mi.on 22 Rd. (310th Ave.) West into Leas Rd.,
Right Turn at Shed through cattle gaurd, up hill once to pumpin unit

Thank You For Using Gemini Wireline, LLC
785-625-1182

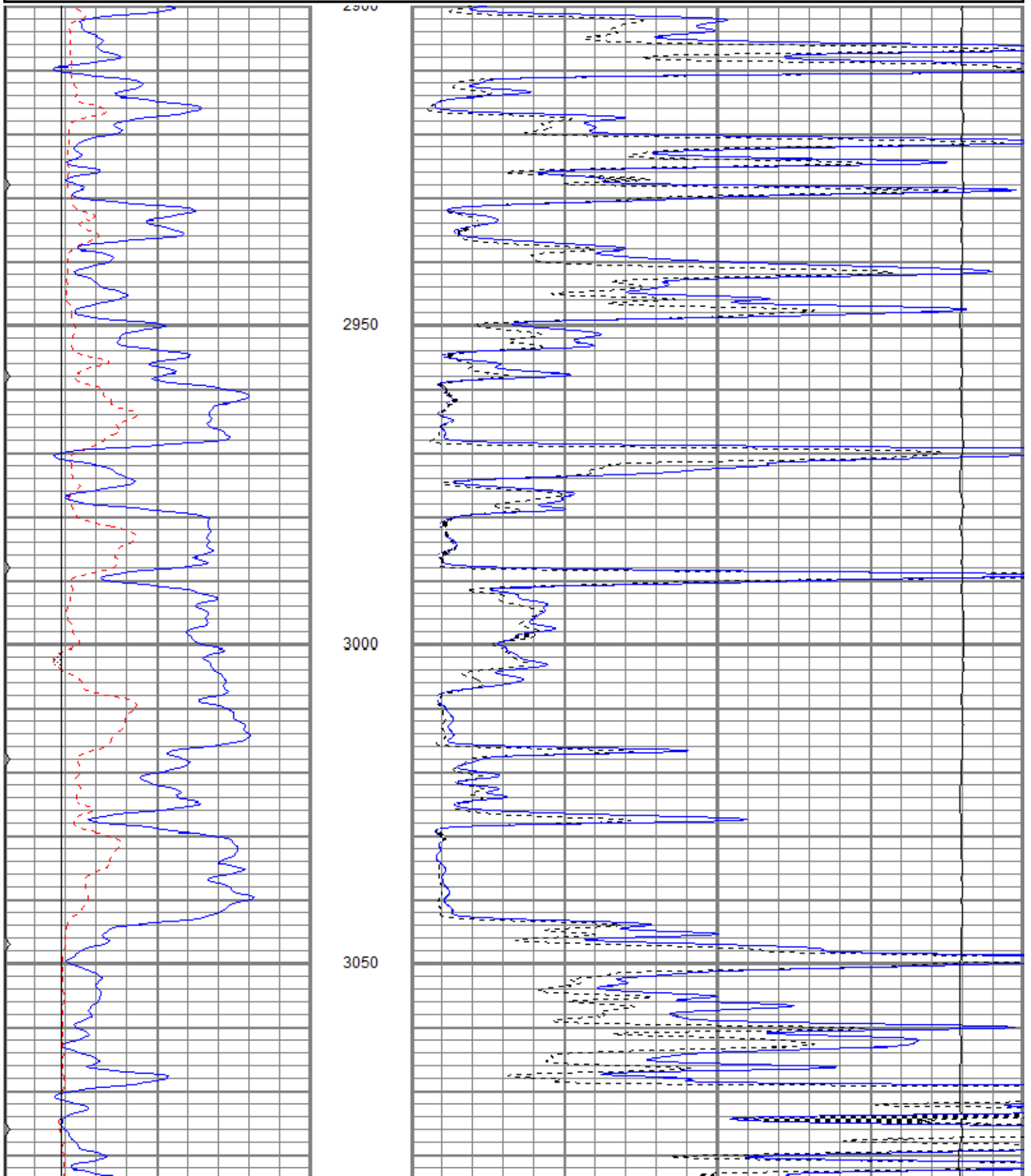


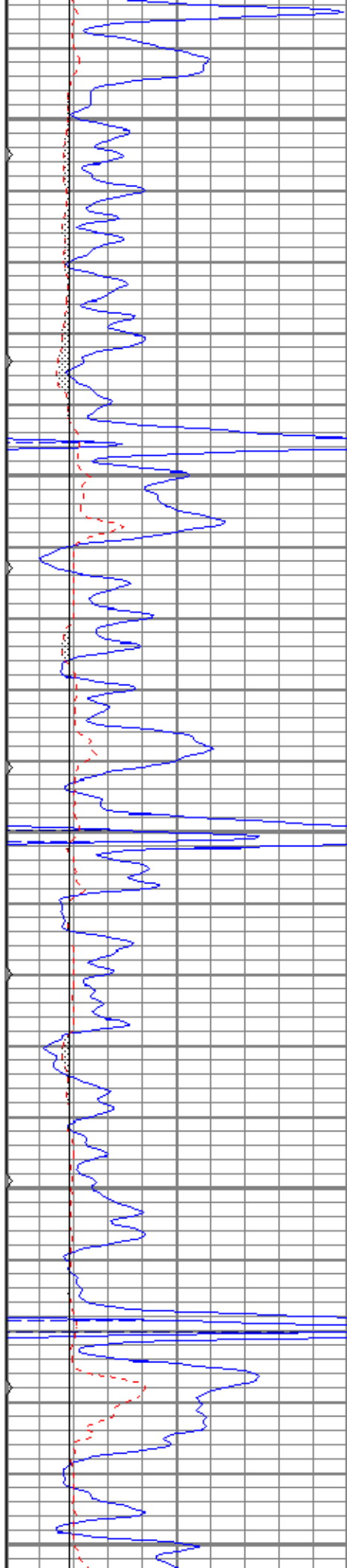
MAIN PASS

Database File mobrumitt#4-33oh.db
 Dataset Pathname pass9
 Presentation Format kml
 Dataset Creation Sun Jul 15 09:19:58 2018
 Charted by Depth in Feet scaled 1:240

0	GR (GAPI)	150
6	MCAL (in)	16
6	BOREID (in)	16
0	MINMK	50

0	MN 2" (Ohm-m)	20
0	MI 1" (Ohm-m)	20
10000	LTEN (lb)	0





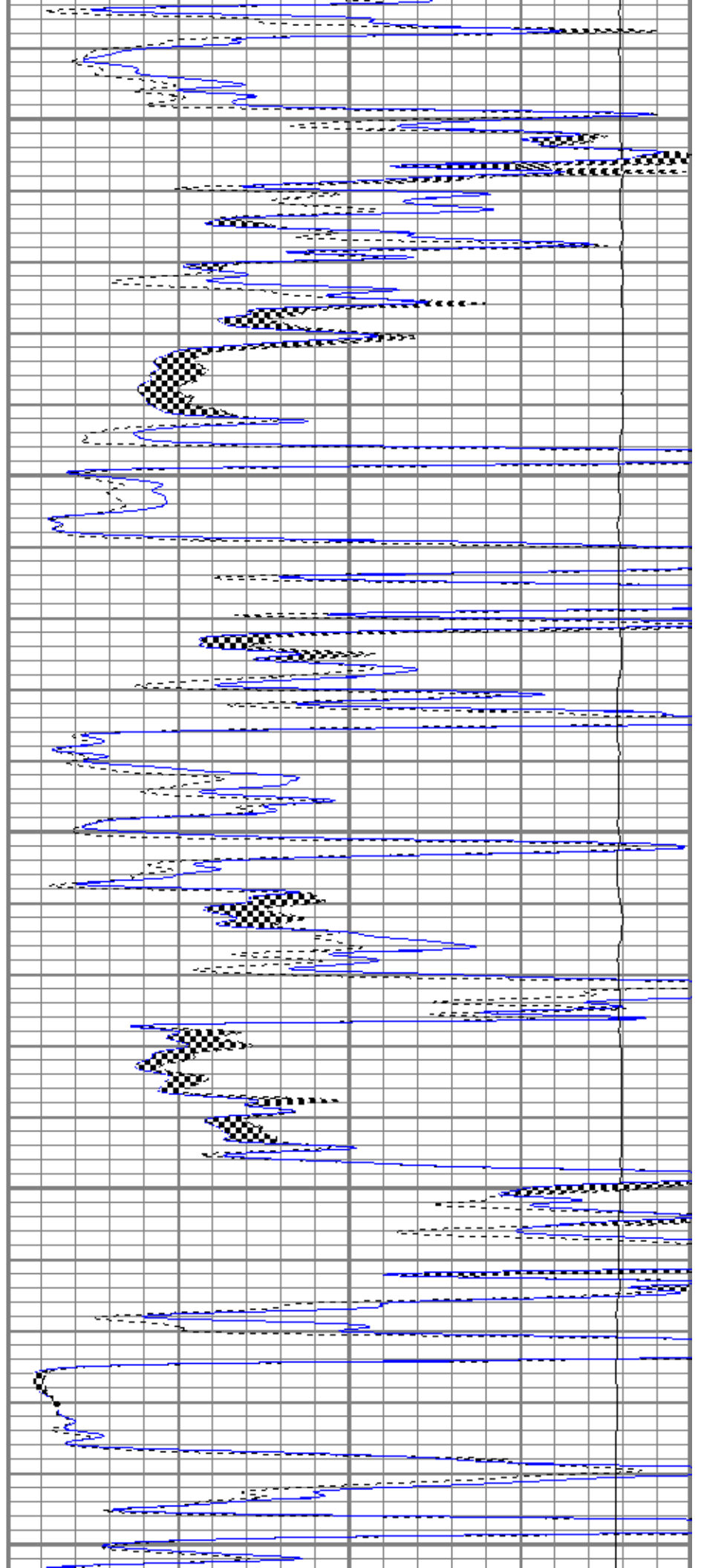
3100

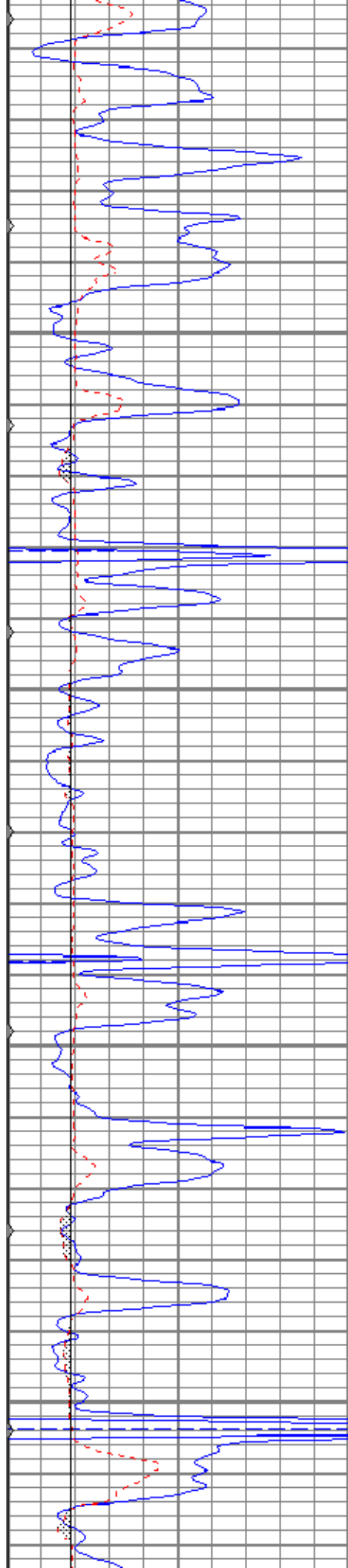
3150

3200

3250

3300



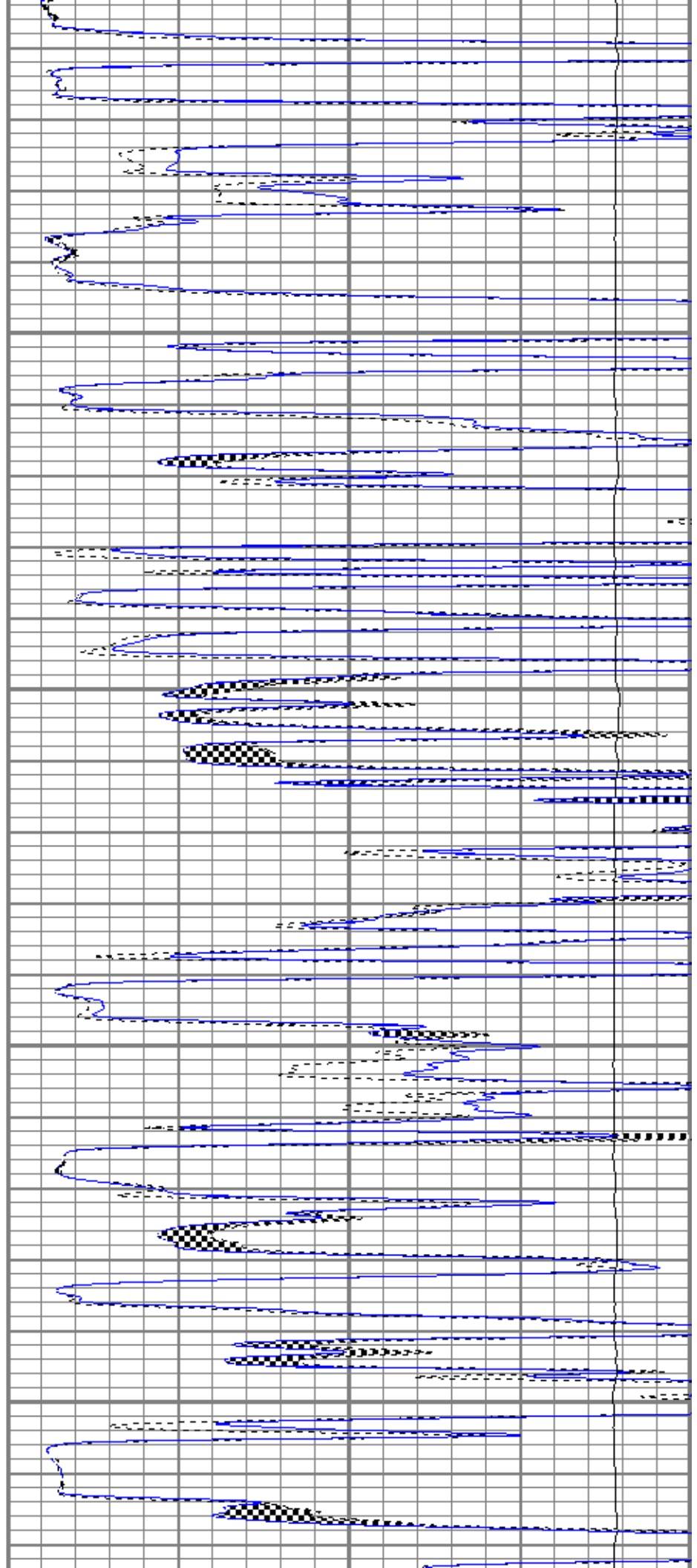


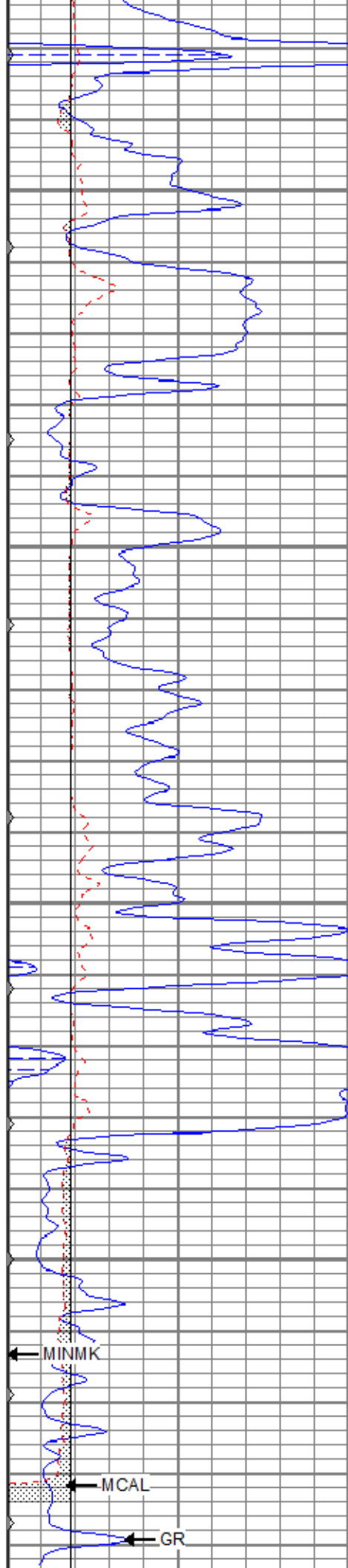
3350

3400

3450

3500





3550

3600

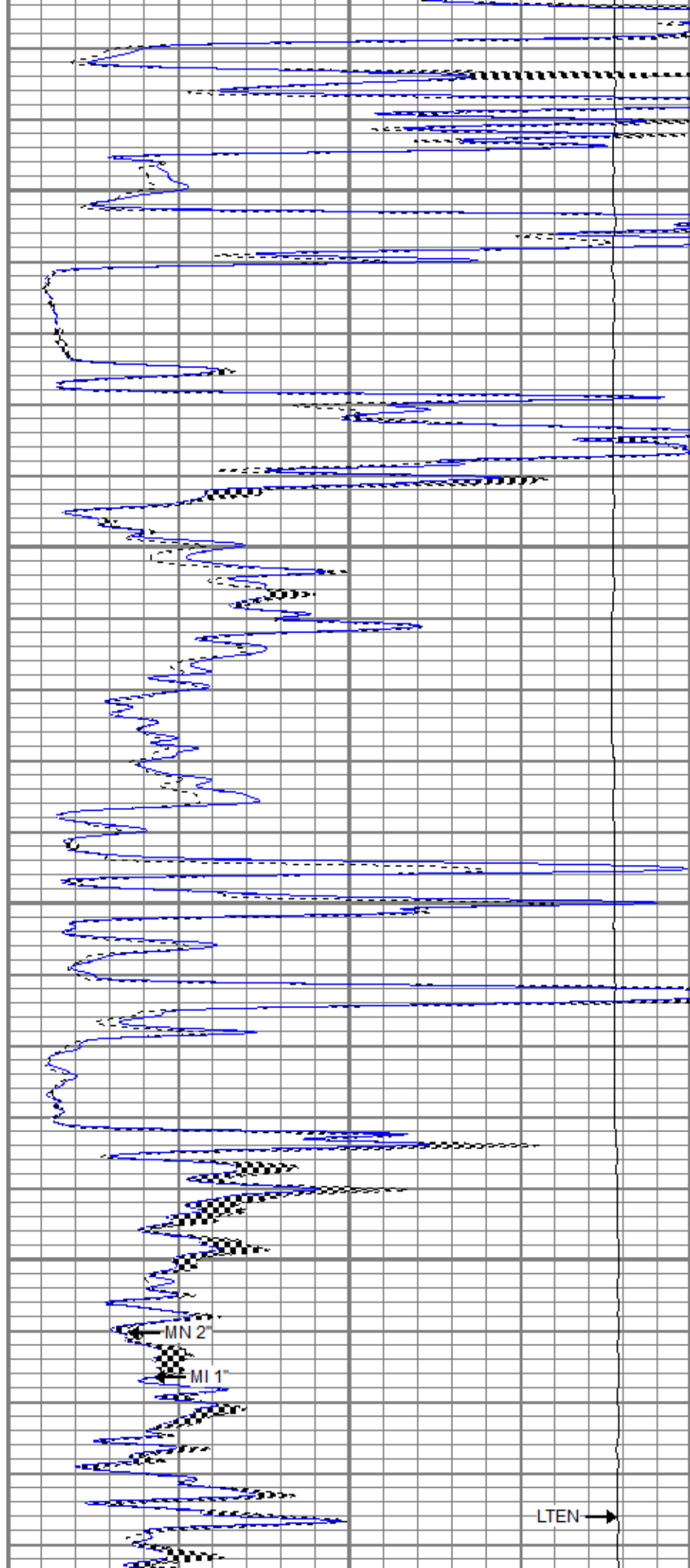
3650

3700

MINMK

MCAL

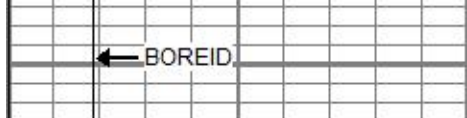
GR



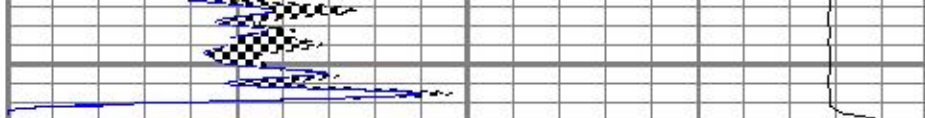
MN 2'

MI 1'

LTEN



3750



0	GR (GAPI)	150
6	MCAL (in)	16
6	BOREID (in)	16
0	MINMK	50

0	MN 2" (Ohm-m)	20
0	MI 1" (Ohm-m)	20
10000	LTEN (lb)	0

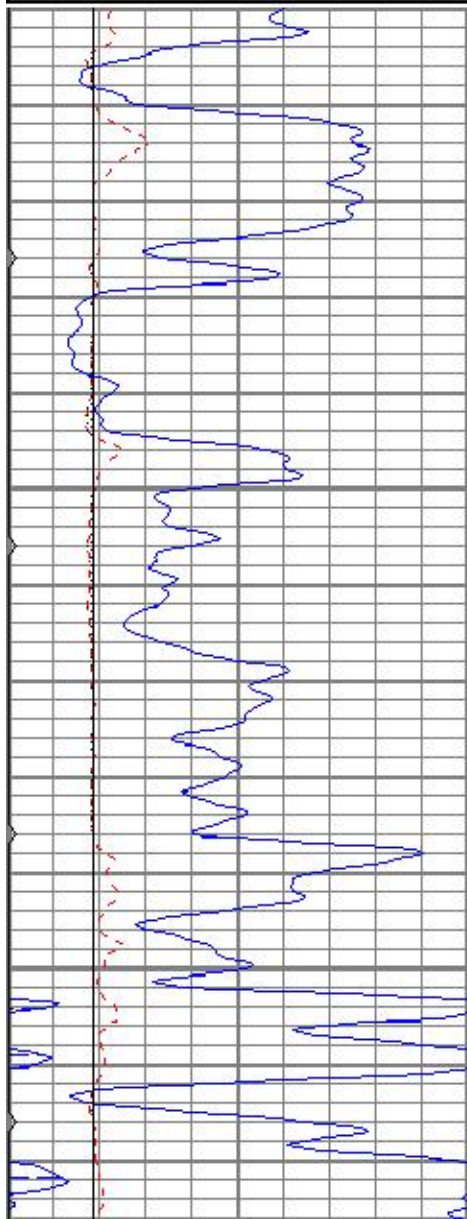


REPEAT SECTION

Database File mobrumitt#4-33oh.db
 Dataset Pathname pass8
 Presentation Format kml
 Dataset Creation Sun Jul 15 09:10:31 2018
 Charted by Depth in Feet scaled 1:240

0	GR (GAPI)	150
6	MCAL (in)	16
6	BOREID (in)	16
0	MINMK	50

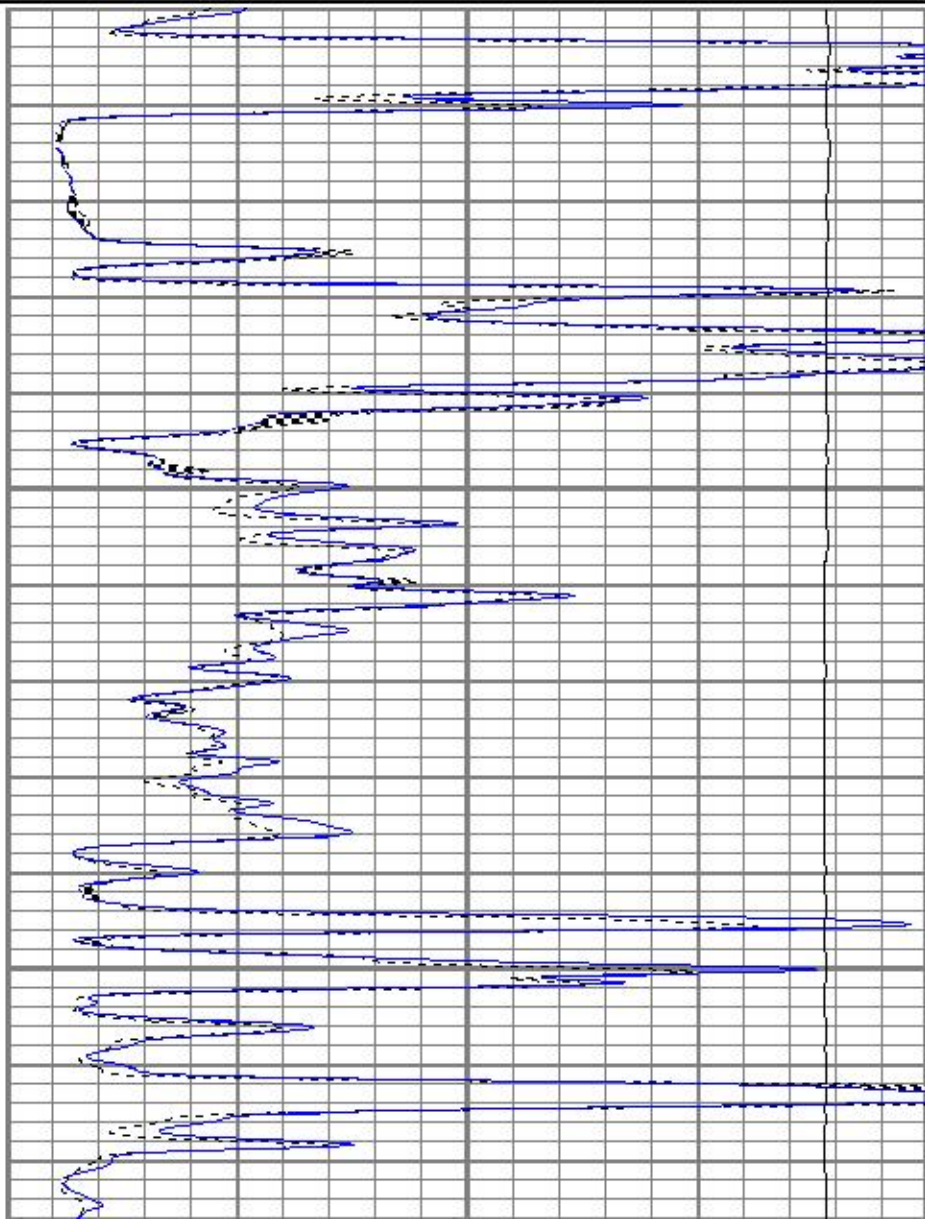
0	MN 2" (Ohm-m)	20
0	MI 1" (Ohm-m)	20
10000	LTEN (lb)	0

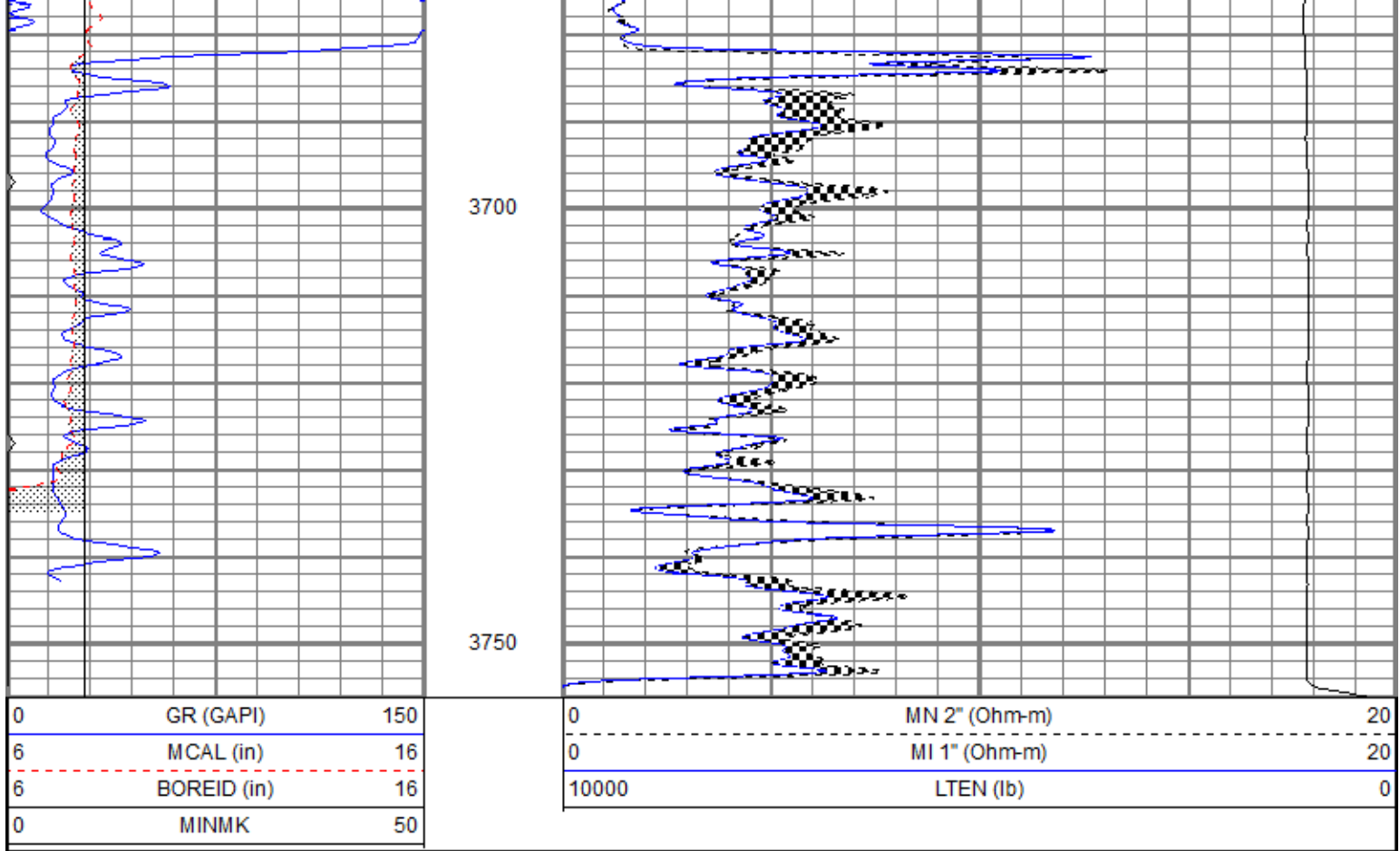


3550

3600

3650





Calibration Report

Database File mobrumitt#4-33oh.db
 Dataset Pathname pass9
 Dataset Creation Sun Jul 15 09:19:58 2018

Microlog Calibration Report

Serial-Model: 9151-Gerhart
 Performed: Sun Jul 15 09:08:40 2018

	Readings			References			Results	
	Zero	Cal		Zero	Cal		m	b
Normal	0.0013	0.4801	V	0.0000	10.0000	Ohm-m	20.8853	-0.0277
Inverse	0.0030	0.6217	V	0.0000	10.0000	Ohm-m	16.1639	-0.0486
Caliper	0.9710	1.9556	V	6.4000	13.5000	in	7.2109	-0.6014

Gamma Ray Calibration Report

Serial Number: 2001
 Tool Model: OH
 Performed: Sun Nov 12 16:26:41 2017

Calibrator Value: 1.0 GAPI

Background Reading: 0.0 cps
 Calibrator Reading: 1.0 cps

Sensitivity: 0.7000 GAPI/cps

Sensor	Offset (ft)	Schematic	Description	Length (ft)	O.D. (in)	Weight (lb)
GR	10.63		CHD-None	0.75	1.50	5.00
MCAL	1.83		GR-OH (2001)	3.56	3.25	40.00
MI	1.83		MI -Gerhart (9151)	9.46	4.00	125.00

MN

1.83

Gerhart Micro

Dataset: mobrumitt#4-33oh.db: field/well/run1/pass9
Total length: 13.77 ft
Total weight: 170.00 lb
O.D.: 4.00 in