



**DUAL
INDUCTION
LOG**

Company Mikol Oil LLC.
Well Brummitt #4-33
Field Unnamed
County Rooks
State Kansas

Company Mikol Oil LLC.
Well Brummitt #4-33
Field Unnamed
County Rooks State Kansas

Location: 675' FNL & 1981' FEL
API #: 15 163 24365
SEC 33 TWP 10S RGE 17W
Permanent Datum Ground Level Elevation 2081'
Log Measured From KB 8' AGL
Drilling Measured From KB
Other Services
CDNL
ML
Elevation
K.B. 2089'
D.F. 2088'
G.L. 2081'

Date	7-15-18
Run Number	One
Depth Driller	3758'
Depth Logger	3756'
Bottom Logged Interval	3754'
Top Log Interval	210'
Casing Driller	8 5/8" @ 219'
Casing Logger	219'
Bit Size	7 7/8"
Type Fluid in Hole	Chemical
Density / Viscosity	8.9/42
PH / Fluid Loss	8.9/10.0
Source of Sample	Pit
Rm @ Meas. Temp	0.6@88degf
Rmf @ Meas. Temp	0.5@88degf
Rmc @ Meas. Temp	0.8@88degf
Source of Rmf / Rmc	Calculated
Rm @ BHT	0.5@107degf
Time Circulation Stopped	4:15 a.m
Time Logger on Bottom	7:30 a.m
Maximum Recorded Temperature	107degf
Equipment Number	T127
Location	Hays, KS
Recorded By	C. Patterson
Witnessed By	Mr. Marc Downing

<<< Fold Here >>>

All interpretations are opinions based on inferences from electrical or other measurements and we cannot and do not guarantee the accuracy or correctness of any interpretation, and we shall not, except in the case of gross or willful negligence on our part, be liable or responsible for any loss, costs, damages, or expenses incurred or sustained by anyone resulting from any interpretation made by any of our officers, agents or employees. These interpretations are also subject to our general terms and conditions set out in our current Price Schedule.

Comments

North 183 To Saline River Rd. Then East 5.4 mi to 22Rd.(310th Ave.),
(metal Cowboy holding cup by Tank Batteries)
Then North 3.5 mi.on 22 Rd. (310th Ave.) West into Leas Rd.,
Right Turn at Shed through cattle gaurd, up hill once to pumpin unit

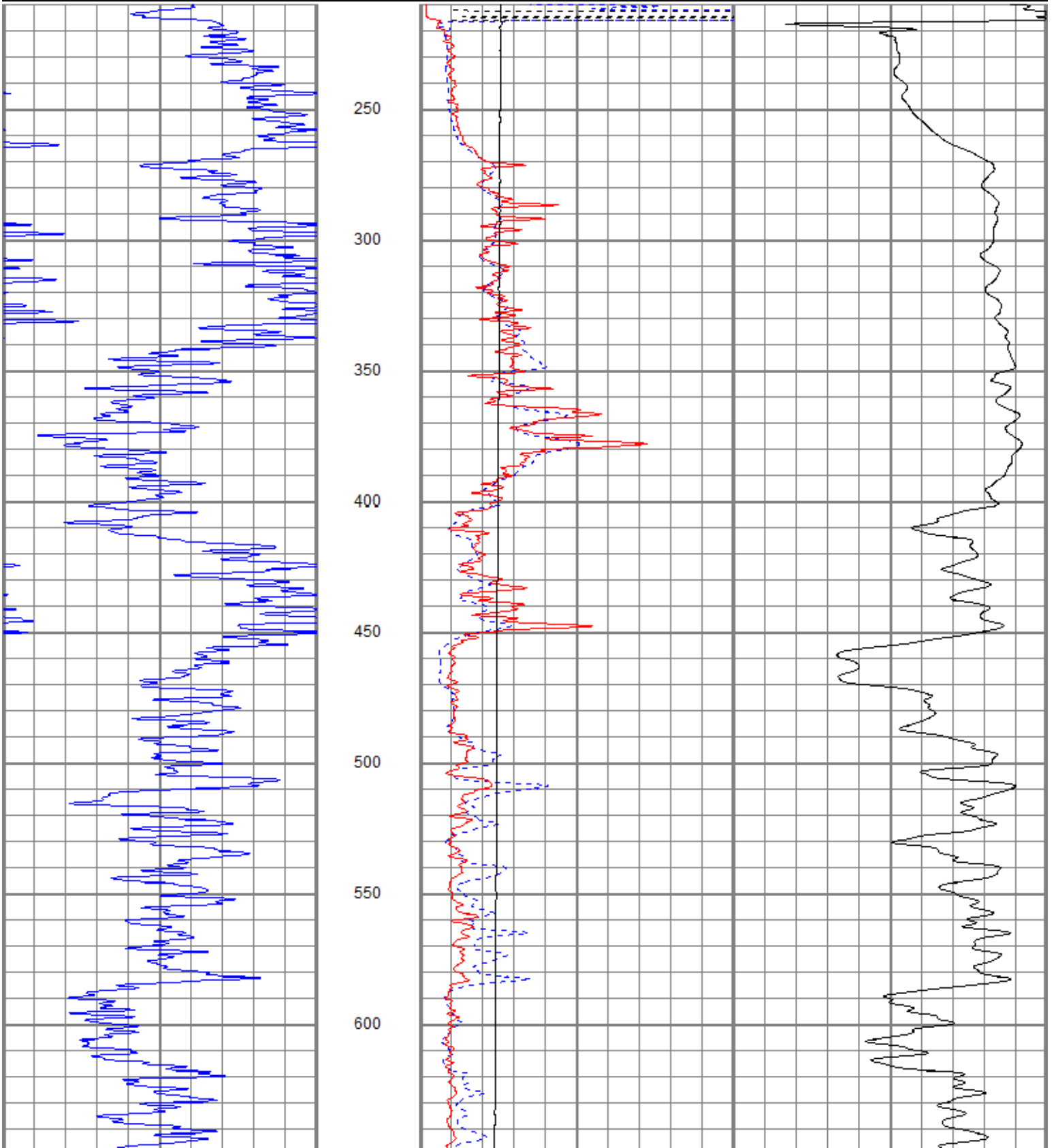
Thank You For Using Gemini Wireline, LLC
785-625-1182

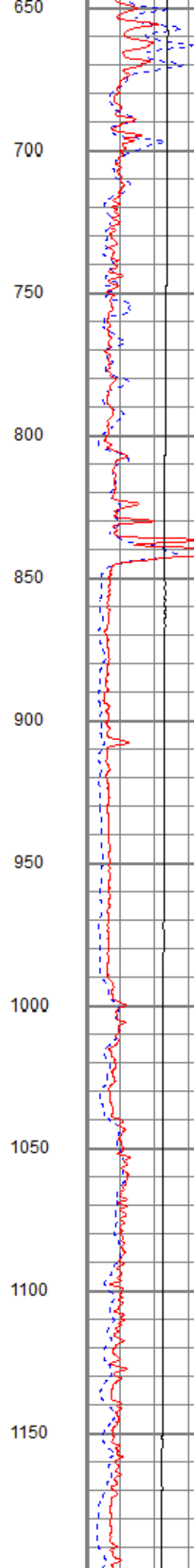
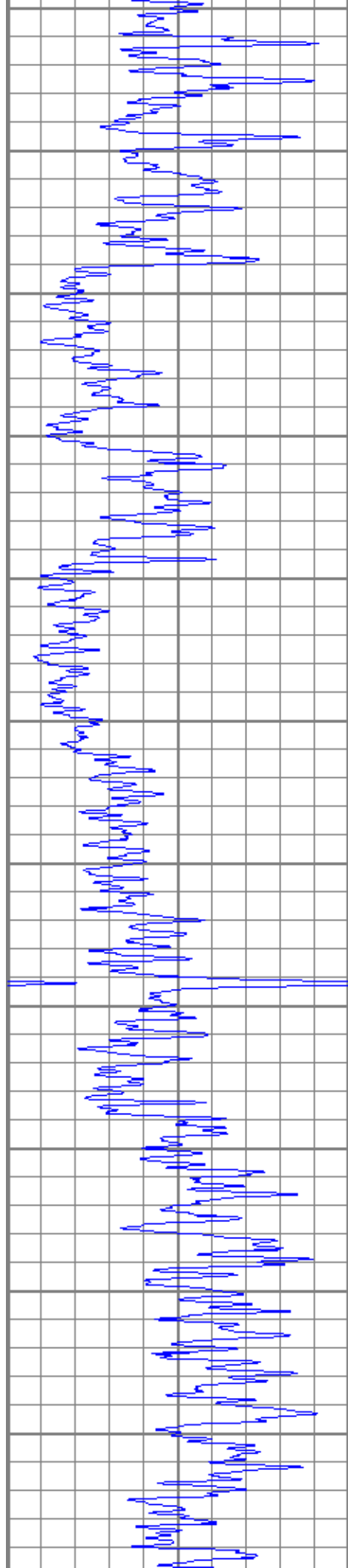


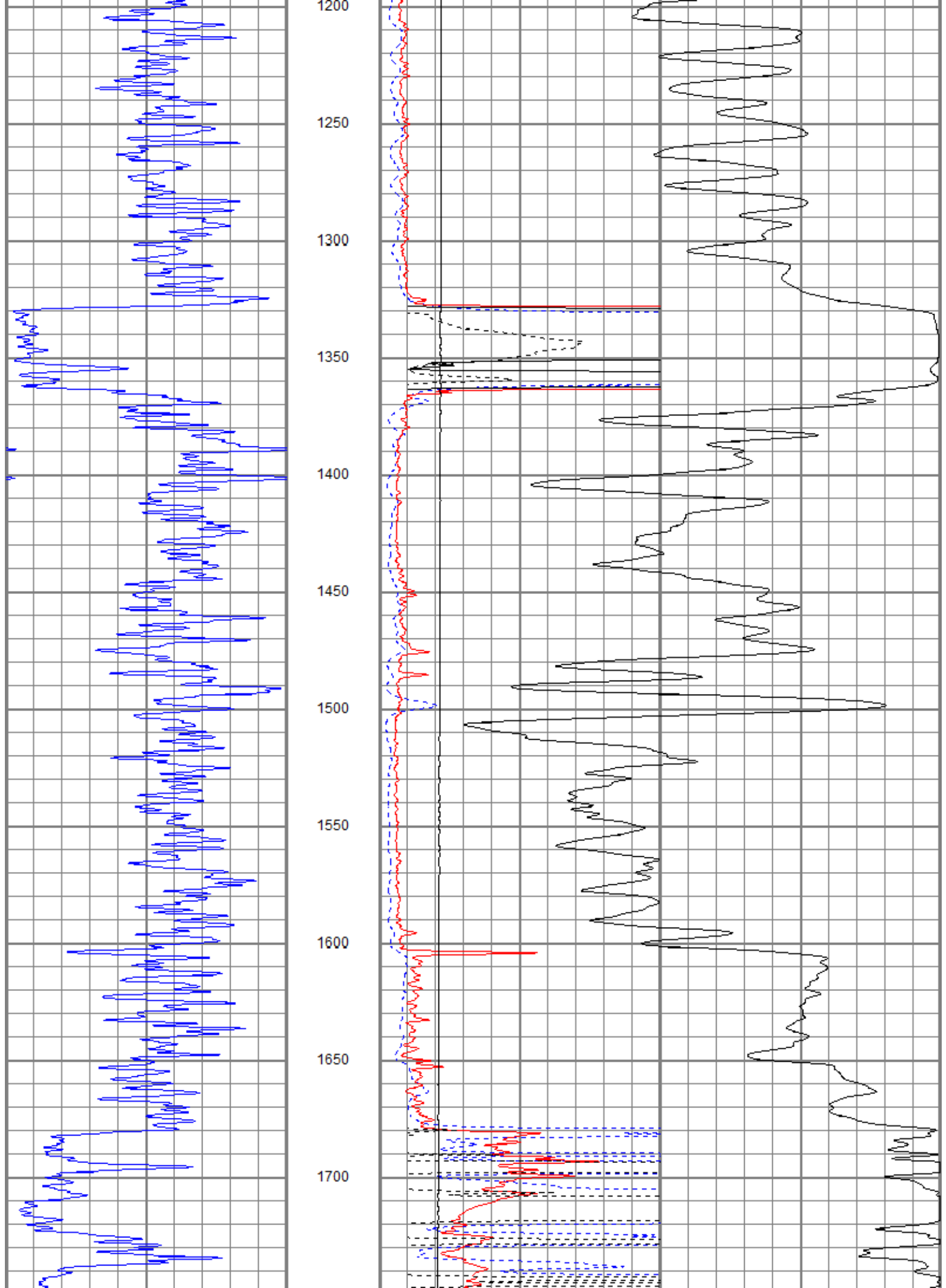
MAIN PASS

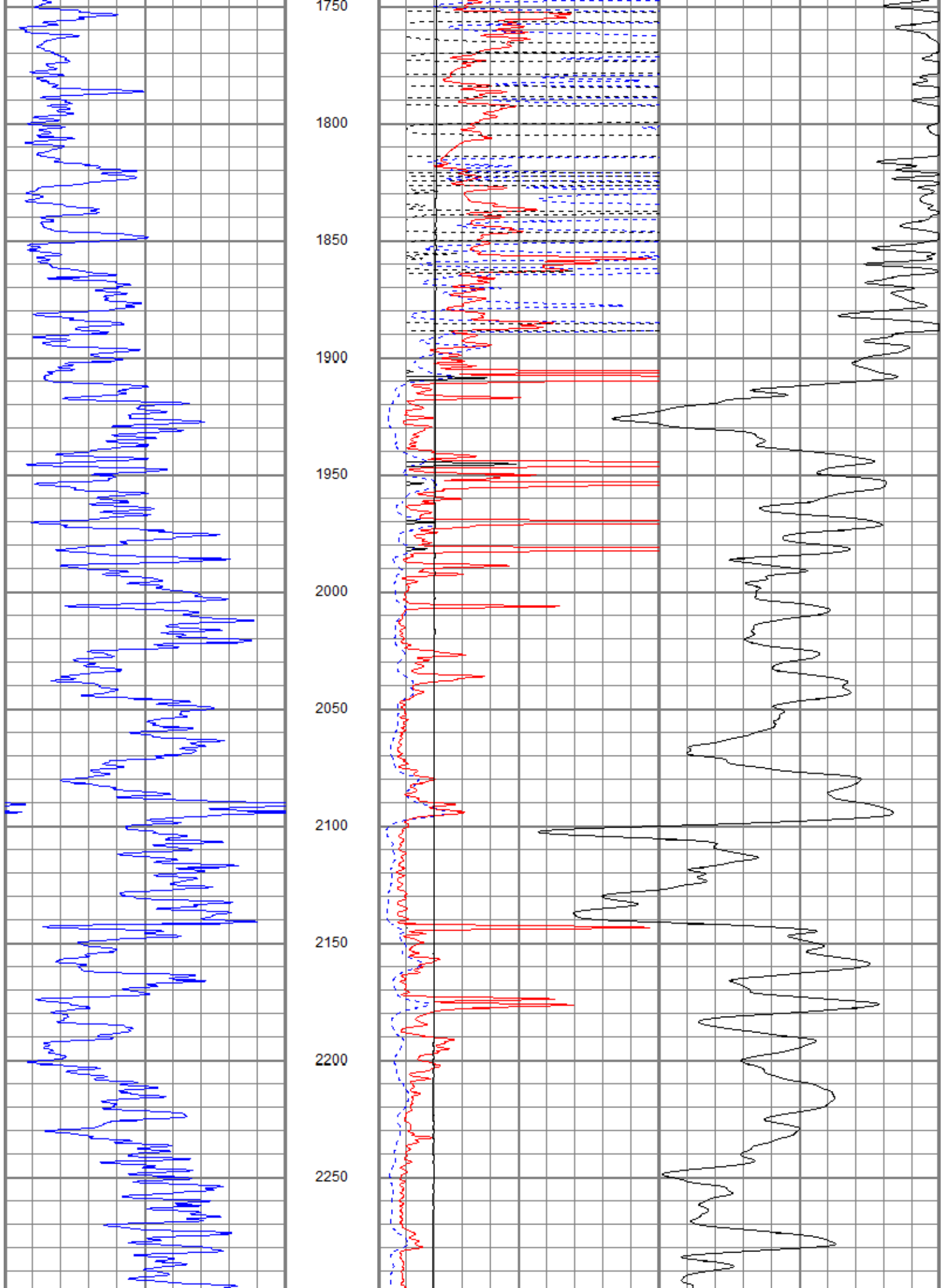
Database File mobrumitt#4-33oh.db
 Dataset Pathname pass6.1
 Presentation Format kdillinn
 Dataset Creation Sun Jul 15 08:40:21 2018
 Charted by Depth in Feet scaled 1:600

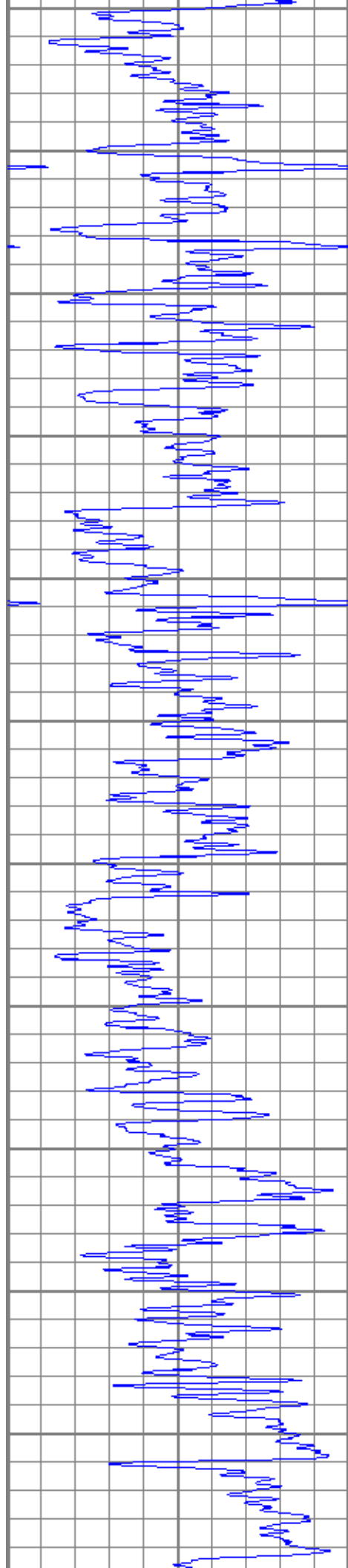
0	GR (GAPI)	150	1000	CILD (mmho/m)	0
			10000	LTEN (lb)	0
0	RILD (Ohm-m)	50			
0	RLL3 (Ohm-m)	50			
50	RILD x 10 (Ohm-m)	500			
50	RLL3 x 10 (Ohm-m)	500			



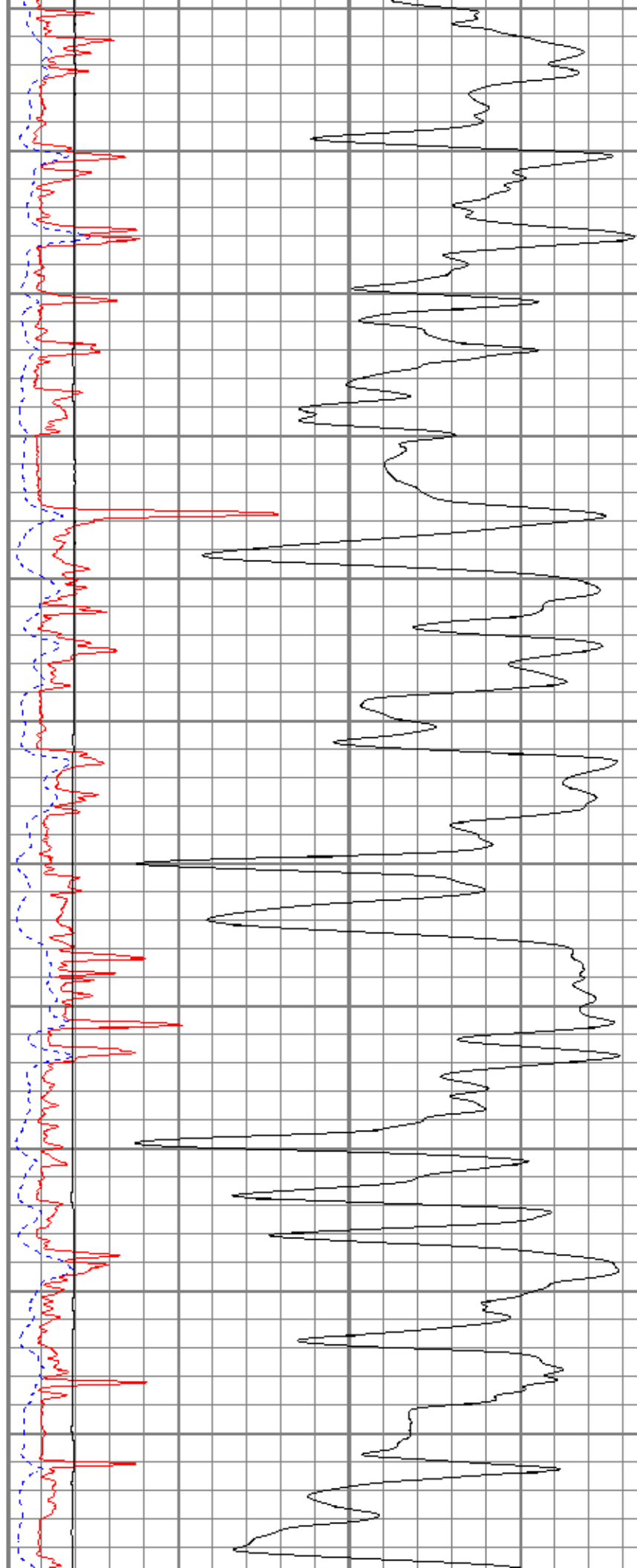


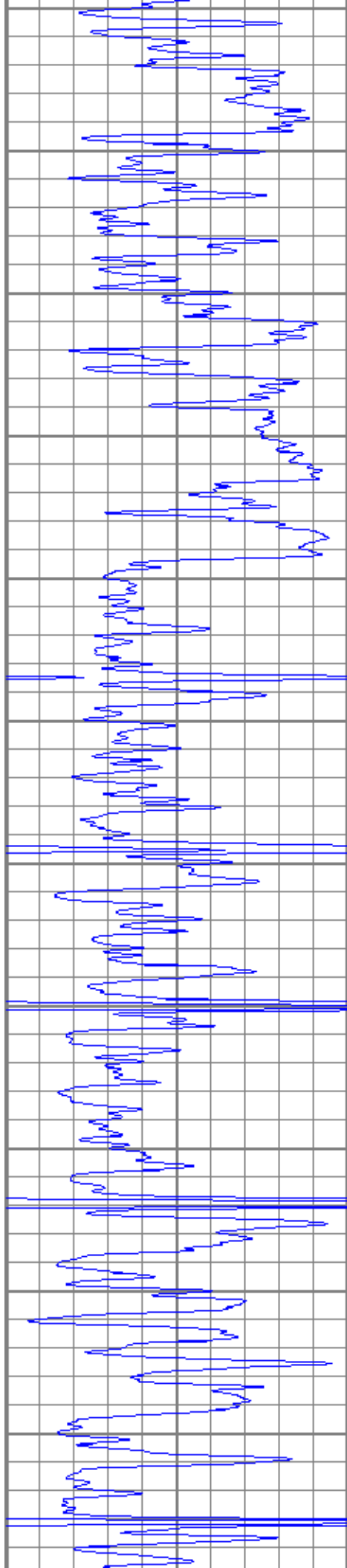




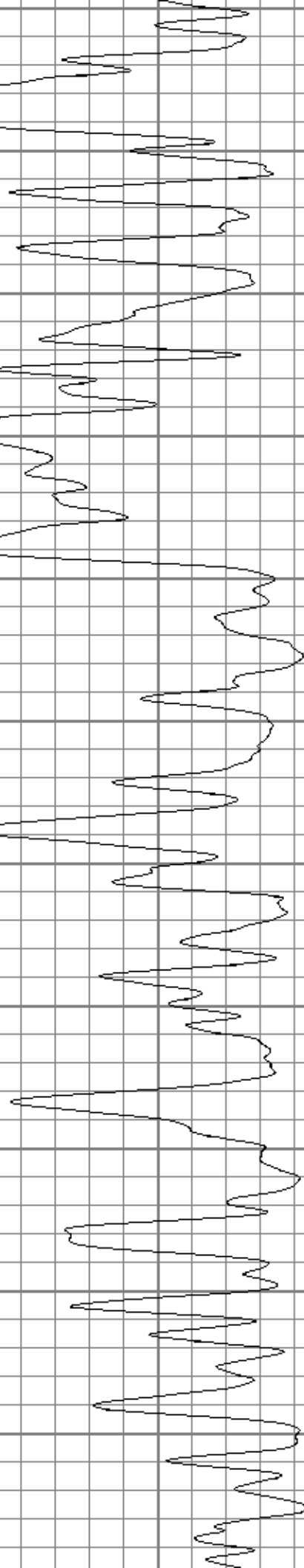
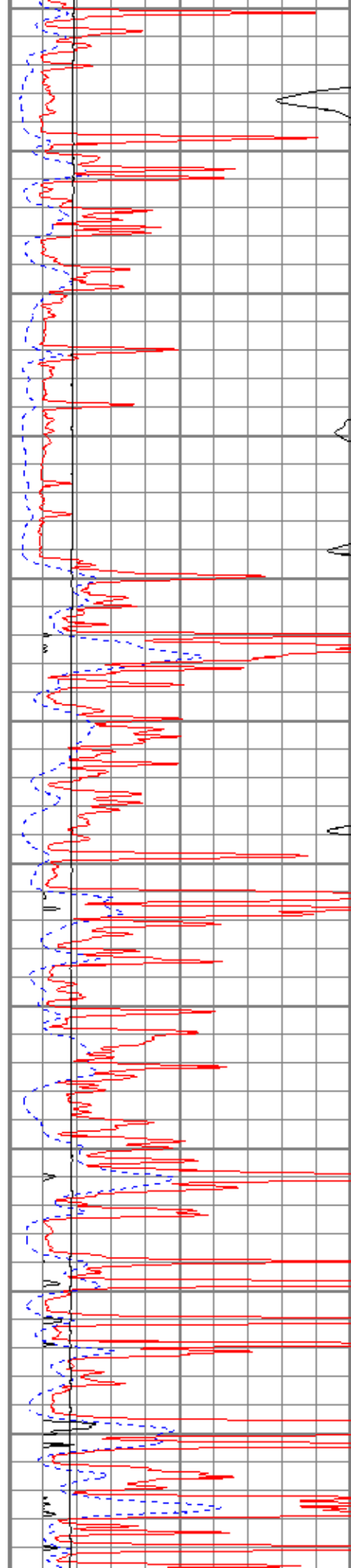


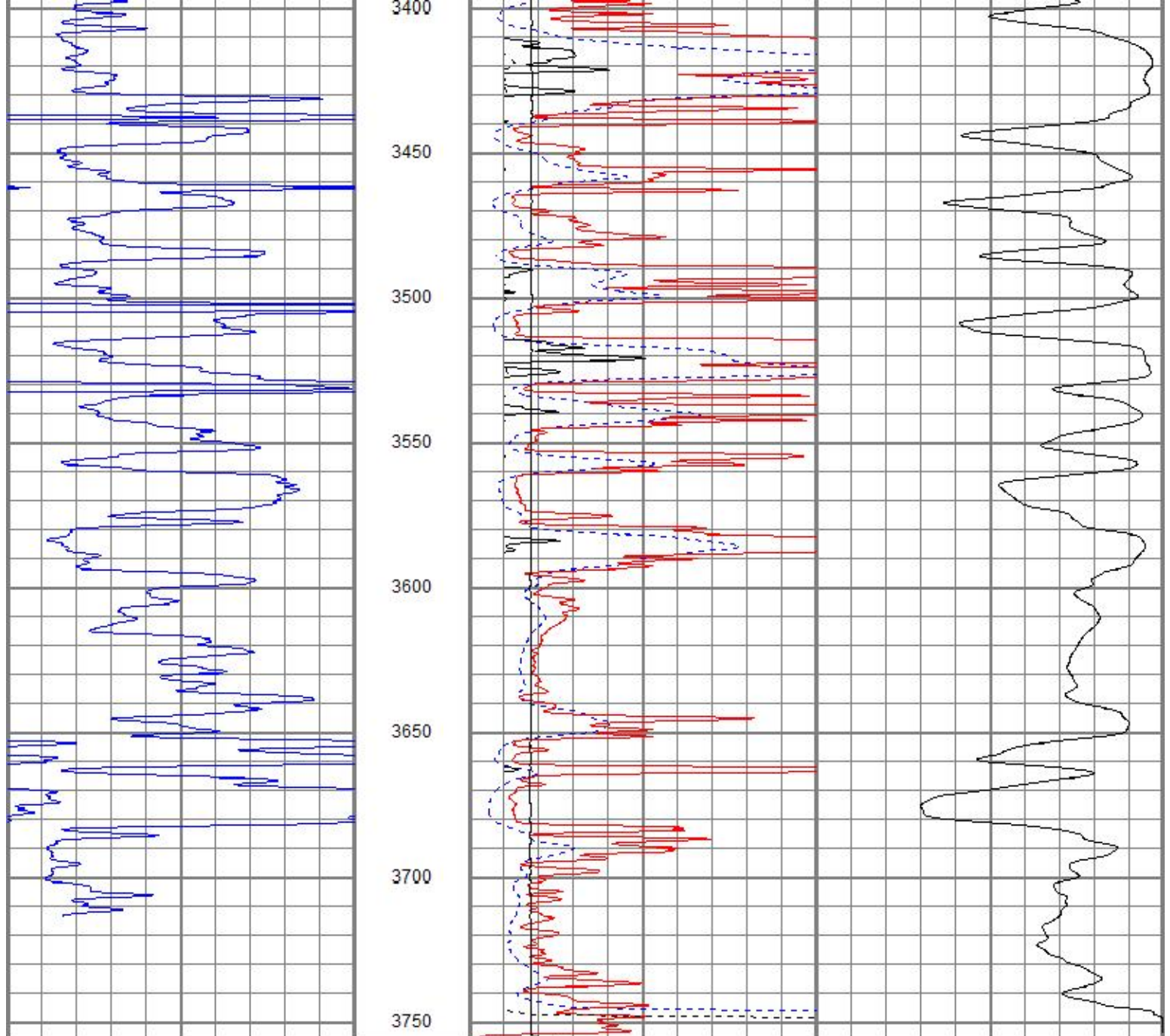
2300
2350
2400
2450
2500
2550
2600
2650
2700
2750
2800





2850
2900
2950
3000
3050
3100
3150
3200
3250
3300
3350





0	GR (GAPI)	150	1000	CILD (mmho/m)	0
			10000	LTEN (lb)	0
0	RILD (Ohm-m)	50			
0	RLL3 (Ohm-m)	50			
50	RILD x 10 (Ohm-m)	500			
50	RLL3 x 10 (Ohm-m)	500			



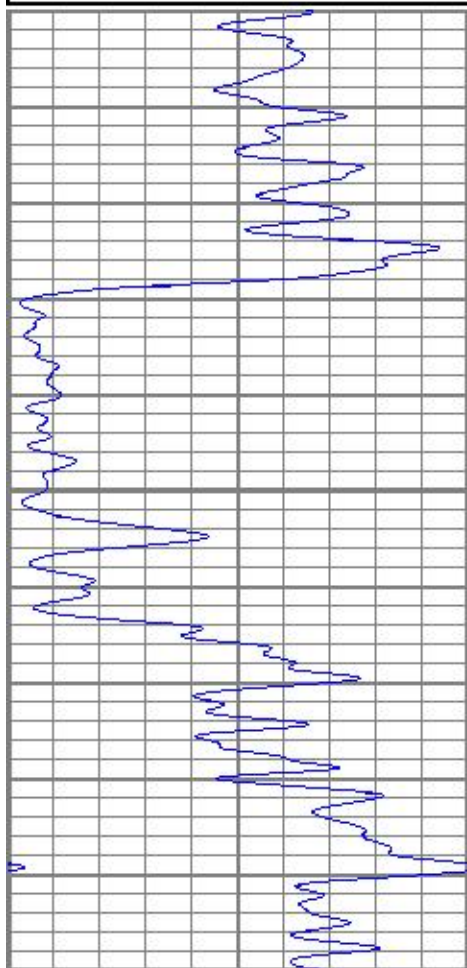
MAIN PASS

Database File	mobrumitt#4-33oh.db
Dataset Pathname	pass6.1
Presentation Format	kdil
Dataset Creation	Sun Jul 15 08:40:21 2018
Charted by	Depth in Feet scaled 1:240

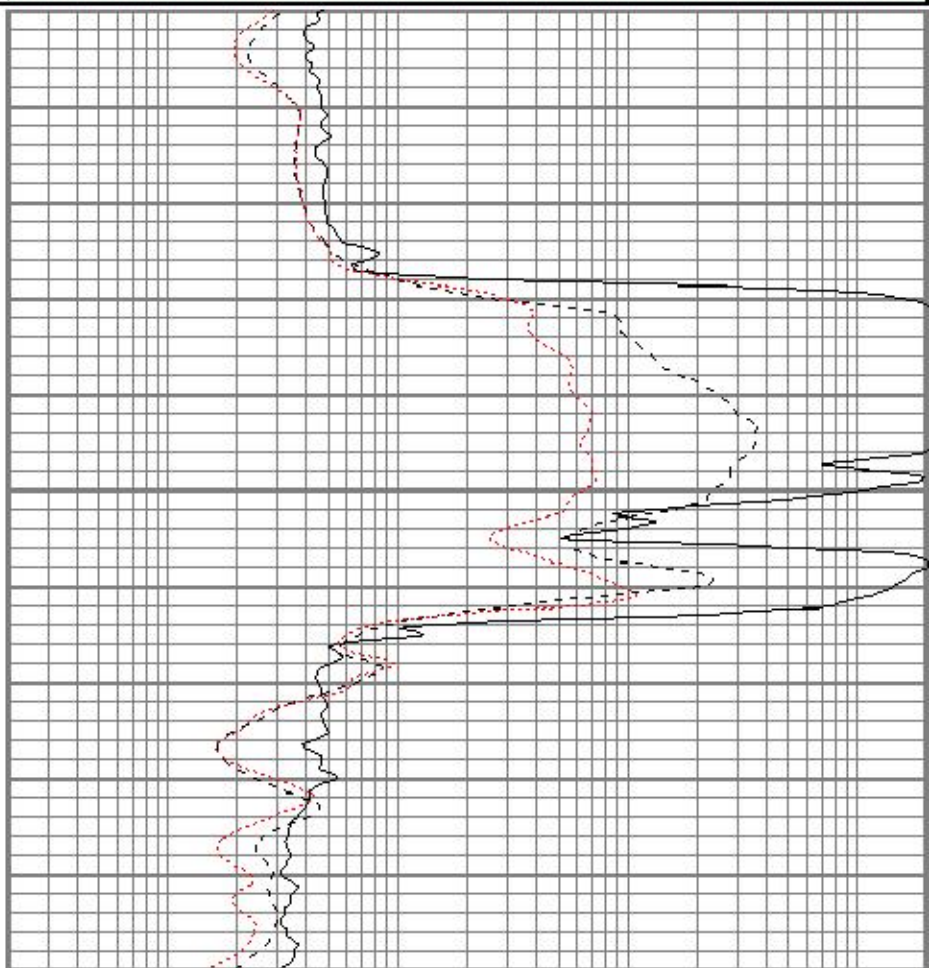
0	GR (GAPI)	150	0.2	RILD (Ohm-m)	2000
---	-----------	-----	-----	--------------	------

100 SP (mV) 100

0.2 RLL3 (Ohm-m) 2000
0.2 RILM (Ohm-m) 2000



1300
1350
1400



0 GR (GAPI) 150
-100 SP (mV) 100

0.2 RILD (Ohm-m) 2000
0.2 RLL3 (Ohm-m) 2000
0.2 RILM (Ohm-m) 2000

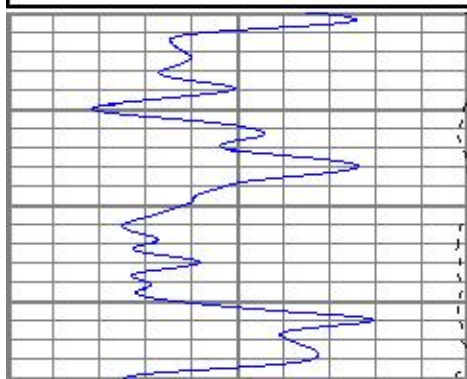


MAIN PASS

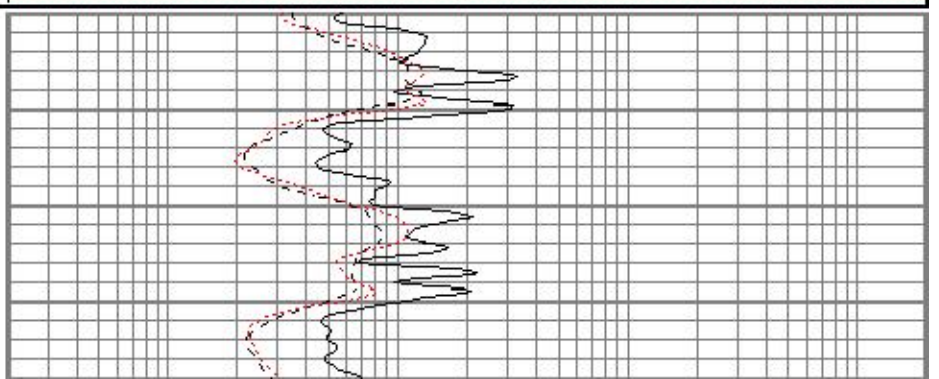
Database File mobrumitt#4-33oh.db
Dataset Pathname pass6.1
Presentation Format kdil
Dataset Creation Sun Jul 15 08:40:21 2018
Charted by Depth in Feet scaled 1:240

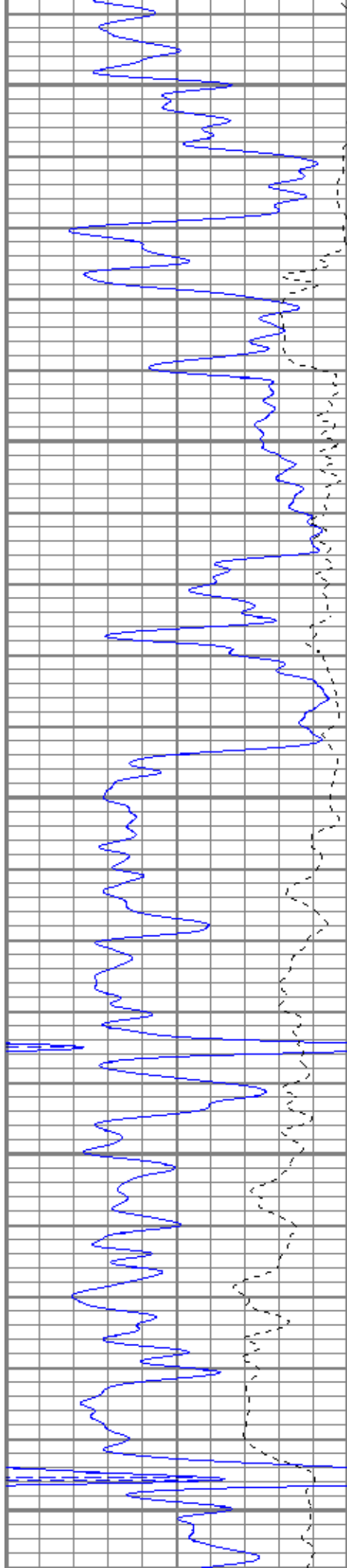
0 GR (GAPI) 150
-100 SP (mV) 100

0.2 RILD (Ohm-m) 2000
0.2 RLL3 (Ohm-m) 2000
0.2 RILM (Ohm-m) 2000



2500





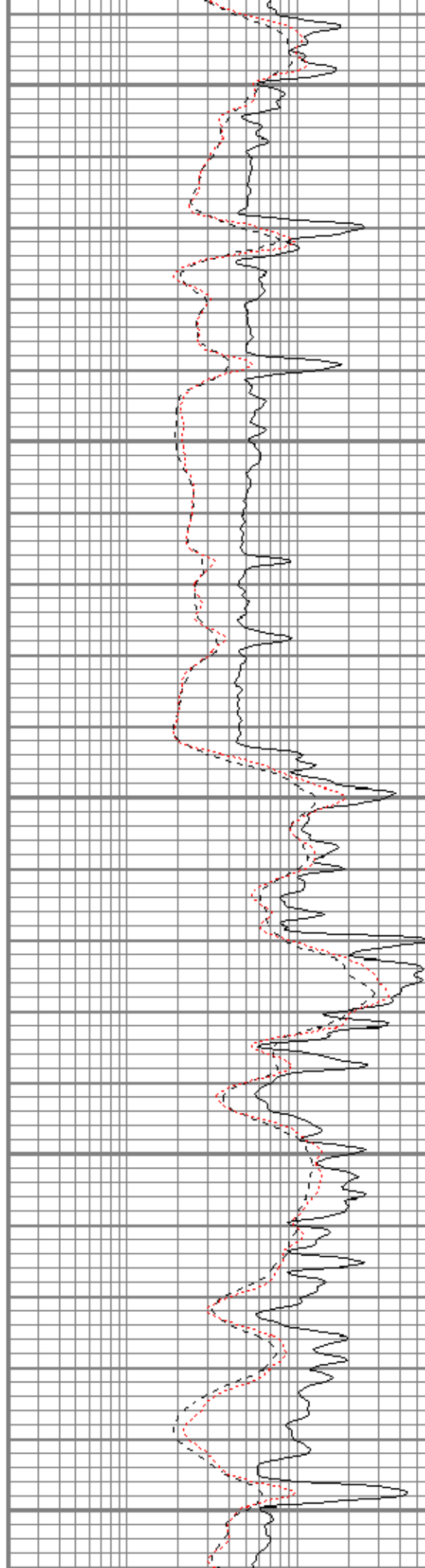
2950

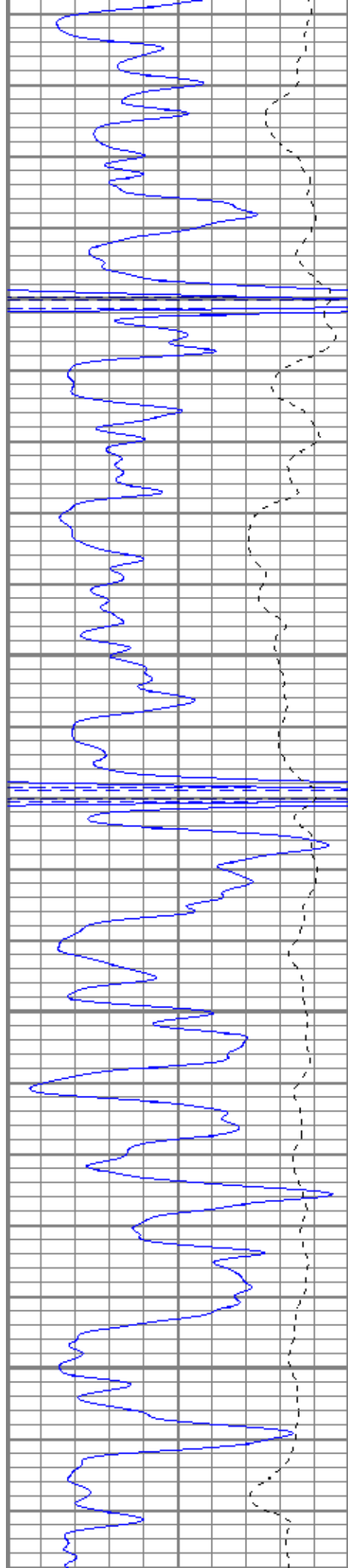
3000

3050

3100

3150



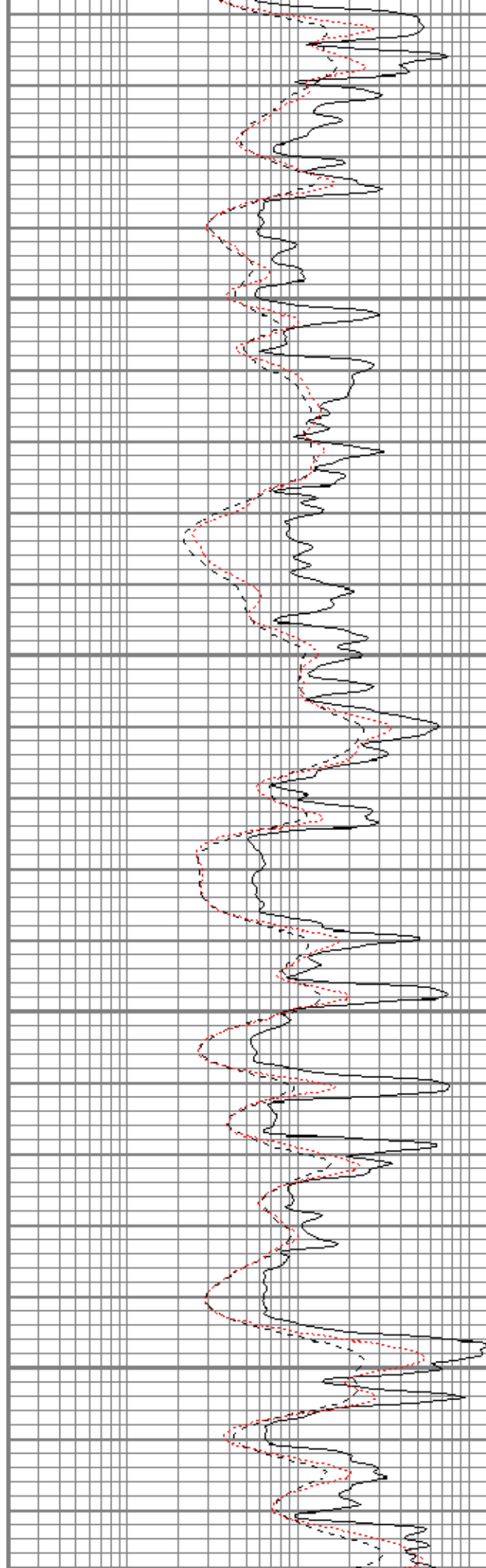


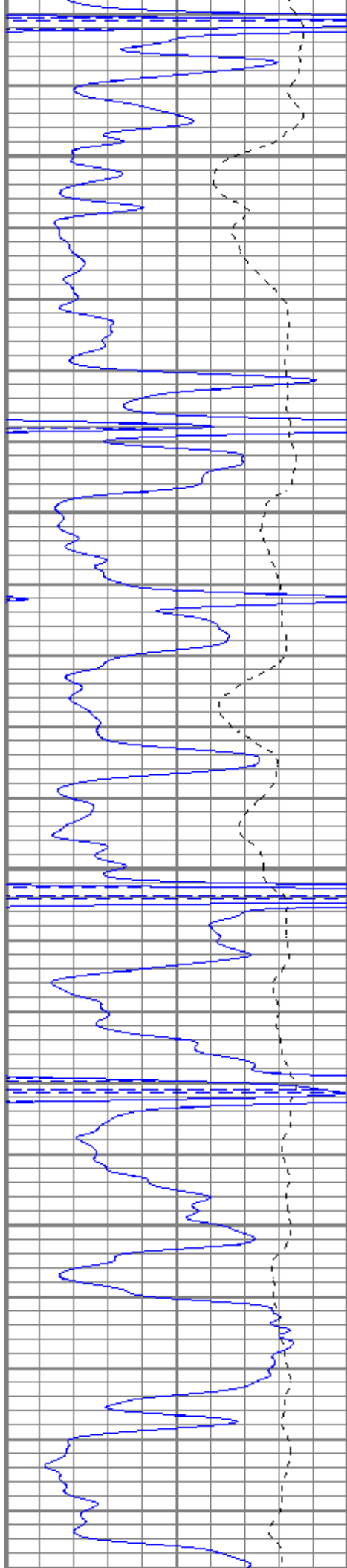
3200

3250

3300

3350



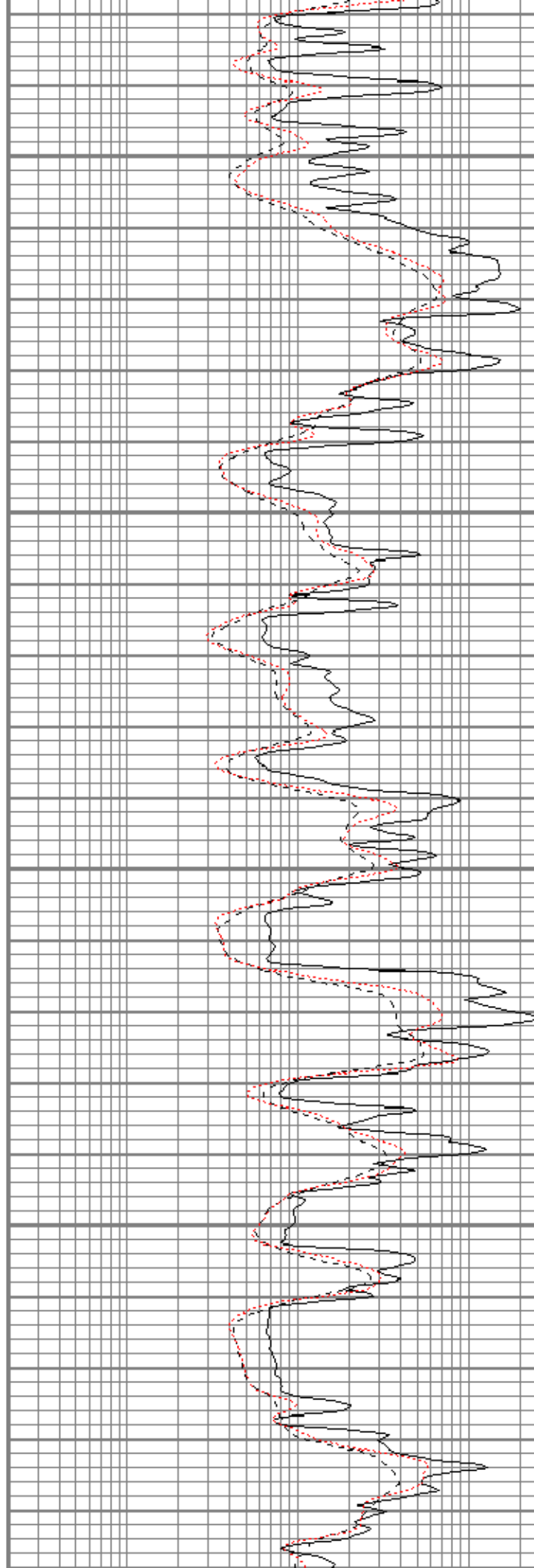


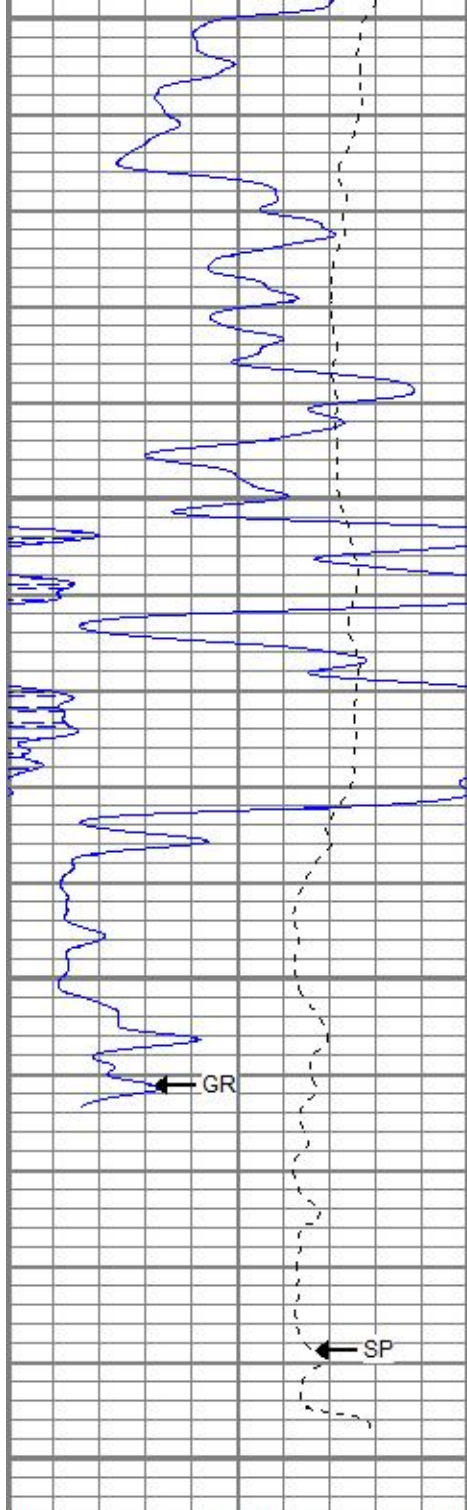
3400

3450

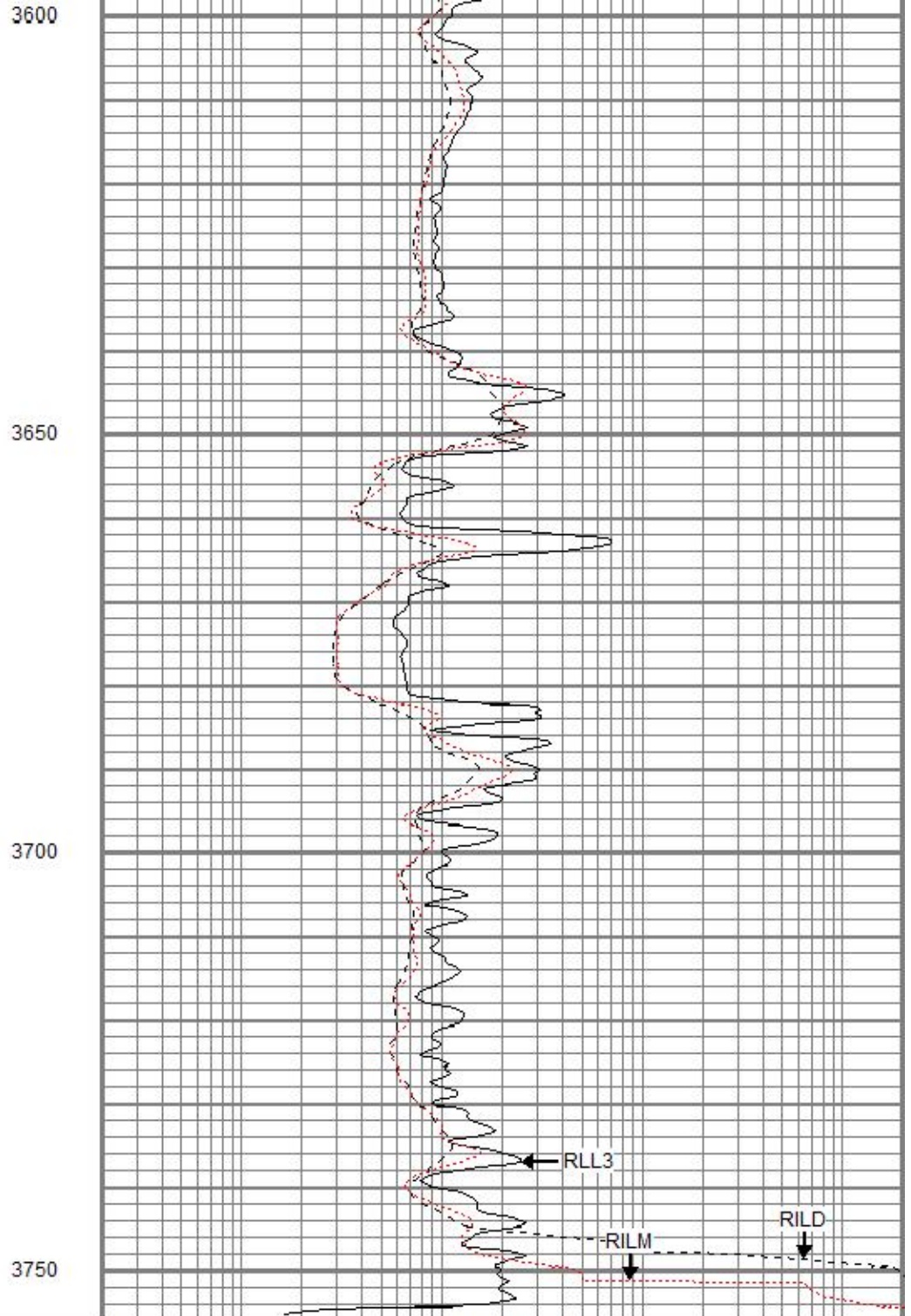
3500

3550





0	GR (GAPI)	150
-100	SP (mV)	100



0.2	RILD (Ohm-m)	2000
0.2	RLL3 (Ohm-m)	2000
0.2	RILM (Ohm-m)	2000



REPEAT SECTION

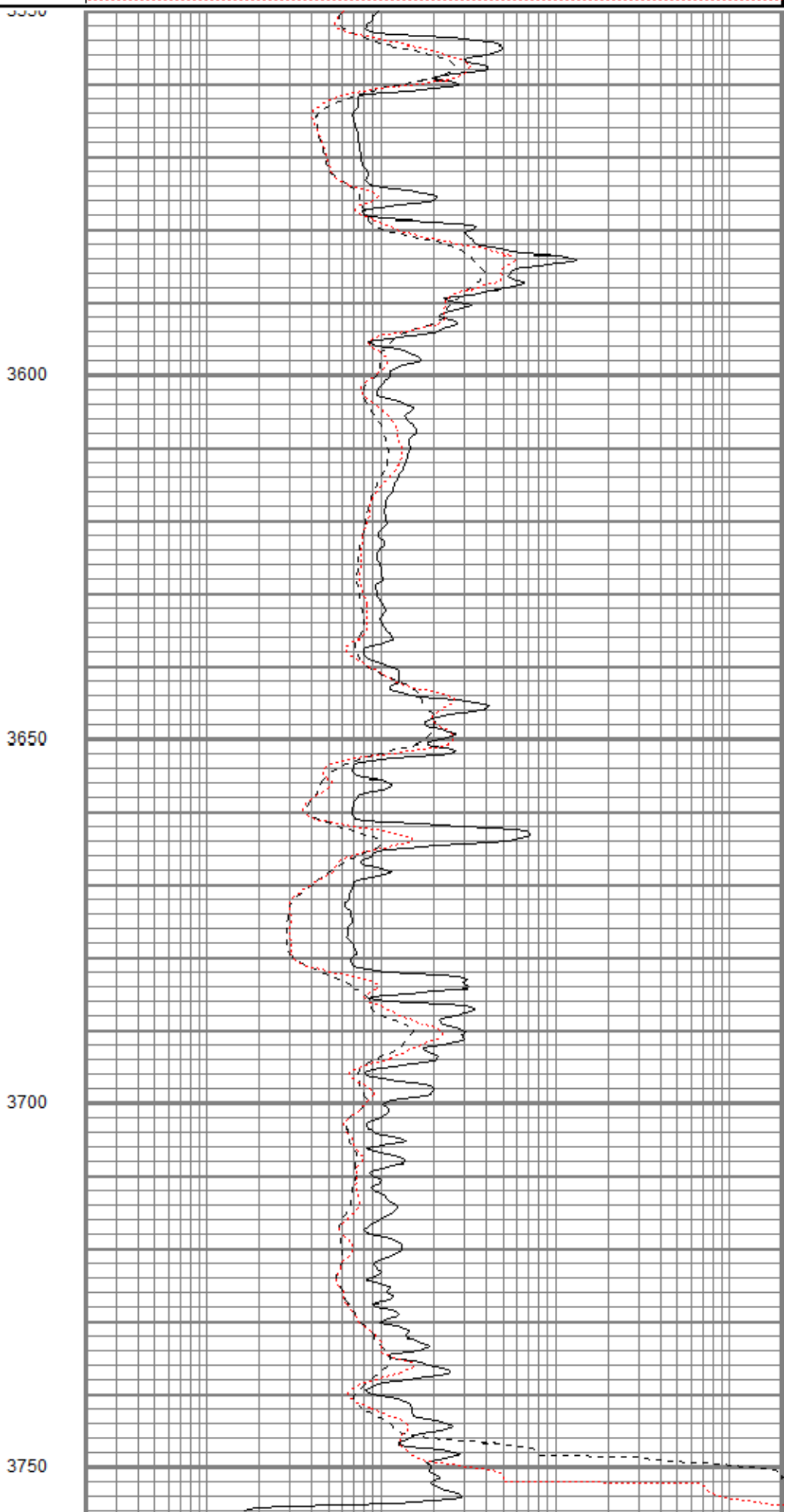
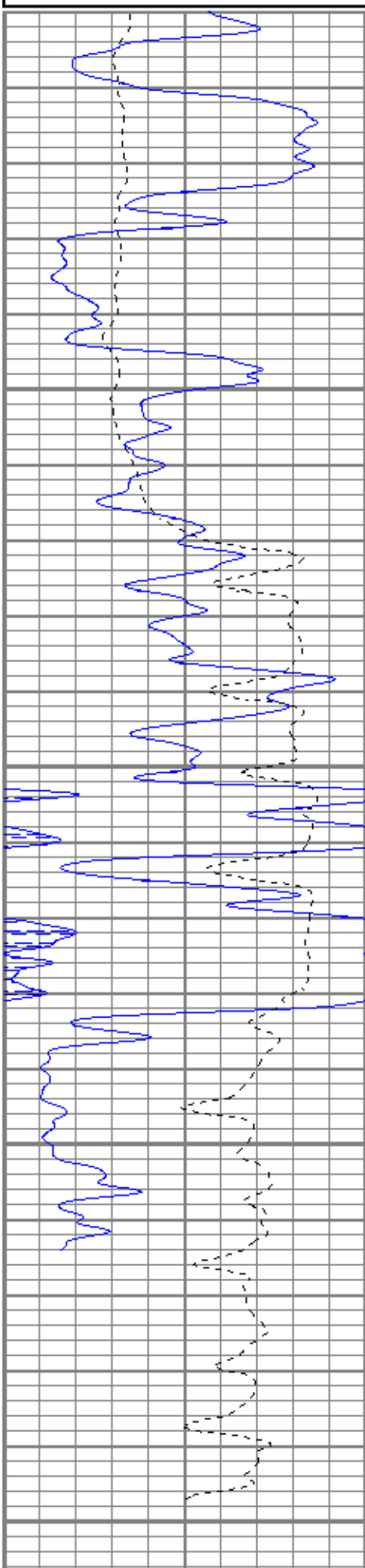
Database File mobrumitt#4-33oh.db
 Dataset Pathname pass5.1
 Presentation Format kdil
 Dataset Creation Sun Jul 15 08:04:14 2018
 Charted by Depth in Feet scaled 1:240

0	GR (GAPI)	150	0.2	RILD (Ohm-m)	2000
---	-----------	-----	-----	--------------	------

-100 SP (mV) 100

0.2 RLL3 (Ohm-m) 2000

0.2 RILM (Ohm-m) 2000



0 GR (GAPI) 150

0.2 RILD (Ohm-m) 2000

-100	SP (mV)	100
------	---------	-----

0.2	RLL3 (Ohm-m)	2000
0.2	RILM (Ohm-m)	2000

Calibration Report	
Database File	mobrumitt#4-33oh.db
Dataset Pathname	pass6.1
Dataset Creation	Sun Jul 15 08:40:21 2018

Dual Induction Calibration Report	
Serial-Model:	5375-G
Surface Cal Performed:	Mon Jun 04 17:57:18 2018
Downhole Cal Performed:	Mon Jun 04 17:57:18 2018
After Survey Verification Performed:	Mon Jun 04 17:57:18 2018

Surface Calibration								
Loop:	Readings			References			Results	
	Air	Loop		Air	Loop		m	b
Deep	-0.002	0.655	V	0.000	350.000	mmho/m	532.190	1.293
Medium	0.011	0.730	V	0.000	400.000	mmho/m	555.870	-5.985
Internal:	Zero	Cal		Zero	Cal		m	b
Deep	-0.002	0.654	V	0.000	350.000	mmho/m	532.823	1.314
Medium	0.011	0.731	V	0.000	550.000	mmho/m	763.357	-8.251

Downhole Calibration								
Internal:	Readings			References			Results	
	Zero	Cal		Zero	Cal		m	b
Deep	0.000	0.000	mmho/m	-0.019	349.565	mmho/m	1.000	0.000
Medium	0.000	0.000	mmho/m	0.024	400.529	mmho/m	1.000	0.000
Shallow	2.433	0.017	V	500.000	2.000	Ohm-m	200.067	1.624

After Survey Verification								
Internal:	Readings			Targets			Results	
	Zero	Cal		Zero	Cal		m'	b'
Deep	0.000	0.000	mmho/m	0.000	0.000	mmho/m	1.000	0.000
Medium	0.000	0.000	mmho/m	0.000	0.000	mmho/m	1.000	0.000
Shallow	0.000	0.000	Ohm-m	500.000	2.000	Ohm-m	1.000	0.000

Neutron Calibration Report		
Serial Number:	2017	
Tool Model:	lithogearhart	
Performed:	(Not Performed)	
Calibrator Value:	1	NAPI
Calibrator Reading:	1	cps
Sensitivity:	1	NAPI/cps

Temperature Calibration Report	
Serial Number:	WithOutMC
Tool Model:	WOMC
Performed:	(Not Performed)
Reference	Reading

Low Reference: 0.00 degF 0.00 degF
 High Reference: 1.00 degF 1.00 degF
 Gain: 1.00
 Offset: 0.00
 Delta Spacing 1

Inclinometer Calibration Report

Performed:	Wed Dec 06 22:31:06 2017				
	Low Read.	High Read.	Low Ref.	High Ref.	
X Accelerometer	205.00	1843.00	-1.00	1.00	gee
Y Accelerometer	205.00	1843.00	-1.00	1.00	gee
Z Accelerometer					gee

Gamma Ray Calibration Report

Serial Number: WithOutMC
 Tool Model: WOMC
 Performed: Wed Dec 06 22:30:58 2017
 Calibrator Value: 1.0 GAPI
 Background Reading: 0.0 cps
 Calibrator Reading: 1.0 cps
 Sensitivity: 1.0000 GAPI/cps

Sensor	Offset (ft)	Schematic	Description	Length (ft)	O.D. (in)	Weight (lb)
GR	40.07		CHD-STD	0.50	1.69	1.00
ACCY	38.91		ADT-WOMC (WithOutMC) Telemetry Without Mud Cell	4.58	3.50	120.00
ACCX	38.91					
SSTAT	38.49					
PSTAT	37.66					
ASTAT	37.66		NEU-lithogearhart (2017)	5.65	3.50	85.00
GRD	36.82					
TEMP	36.82					
NEU	33.46					
LStat	24.30					
LS8	23.64					
LS7	23.64		ADT1LITH-A (1) Admyr Litho Density Tool	9.29	3.50	240.00
LS6	23.64					
LS5	23.64					
LS4	23.64					
LS3	23.64					
LS2	23.64					
LS1	23.64					
LSV	23.64					
LSD	23.62					
SSV	23.43					
SS8	23.43					
SS7	23.43					
SS6	23.43					
SS5	23.43	DIL-G (5375) Gearhart	21.47	4.00	345.00	
SS4	23.43					

SS4	23.43
SS3	23.43
SS2	23.43
SS1	23.43
DCAL	23.37
SSD	23.04
SP	10.60
CILD	10.60
CILM	6.89



RLL3	1.70
TR_Mon	0.00

Dataset: mobrumitt#4-33oh.db: field/well/run1/pass6.1
 Total length: 41.49 ft
 Total weight: 791.00 lb
 O.D.: 4.00 in