



DUAL INDUCTION LOG

Company ANCHOR BAY PETROLEUM, LLC.

Well SIMPSON #1

Field

County ELLIS

State KANSAS

Location: API #: 15-051-26992-0000

710' FSL & 335' FEL

Other Services
CDL/CNL
MEL

SEC 3 TWP 11S RGE 17W

Elevation

Permanent Datum GROUND LEVEL Elevation 1862
Log Measured From KELLY BUSHING 5' A.G.L
Drilling Measured From KELLY BUSHING

K.B. 1867
D.F. 1865
G.L. 1862

Date	11/20/20
Run Number	ONE
Depth Driller	3555
Depth Logger	3556
Bottom Logged Interval	3554
Top Log Interval	00
Casing Driller	8 5/8" @ 213
Casing Logger	213
Bit Size	7 7/8
Type Fluid in Hole	CHEMICAL MUD
Density / Viscosity	9.4/57
pH / Fluid Loss	9.0/11.2
Source of Sample	FLOWLINE
Rm @ Meas. Temp	.50 @ 62F
Rmf @ Meas. Temp	.37 @ 62F
Rmc @ Meas. Temp	.60 @ 62F
Source of Rmf / Rmc	MEASUREMENT
Rm @ BHT	.27 @ 112F
Time Circulation Stopped	2 HOURS
Time Logger on Bottom	////
Maximum Recorded Temperature	112F
Equipment Number	3802
Location	HAYS, KANSAS
Recorded By	JASON CAPPELLUCCI
Witnessed By	ED GLASSMAN

<<< Fold Here >>>

All interpretations are opinions based on inferences from electrical or other measurements and we cannot and do not guarantee the accuracy or correctness of any interpretation, and we shall not, except in the case of gross or willful negligence on our part, be liable or responsible for any loss, costs, damages, or expenses incurred or sustained by anyone resulting from any interpretation made by any of our officers, agents or employees. These interpretations are also subject to our general terms and conditions set out in our current Price Schedule.

Comments

THANK YOU FOR USING ELI WIRELINE SERVICES, HAYS, KS. (785) 628-6395
DIRECTIONS

HAYS, KS. - NORTH TO SALINE RIVER RD. - EAST TO CODELL RD. - 1 NORTH - NORTHWEST INTO

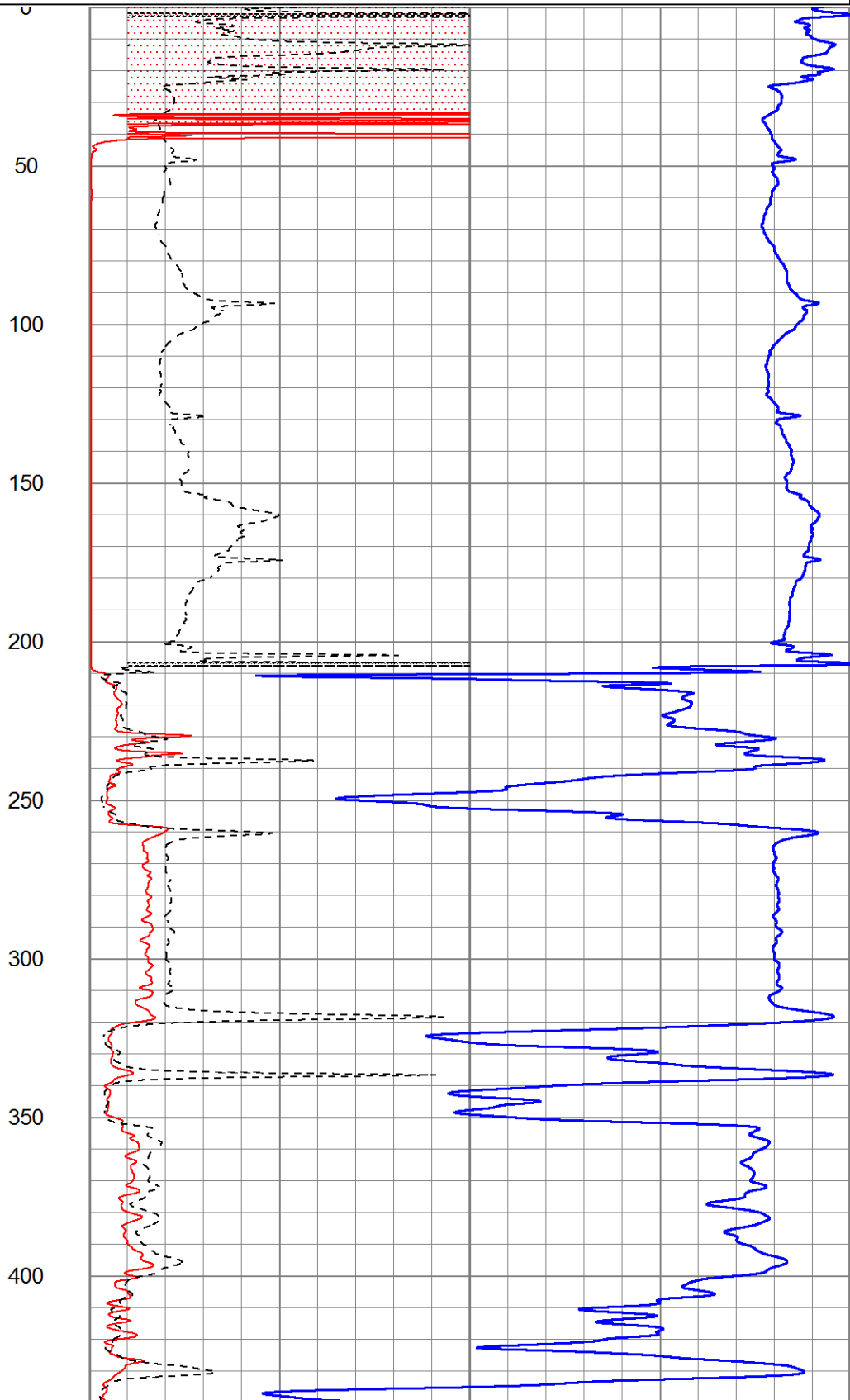
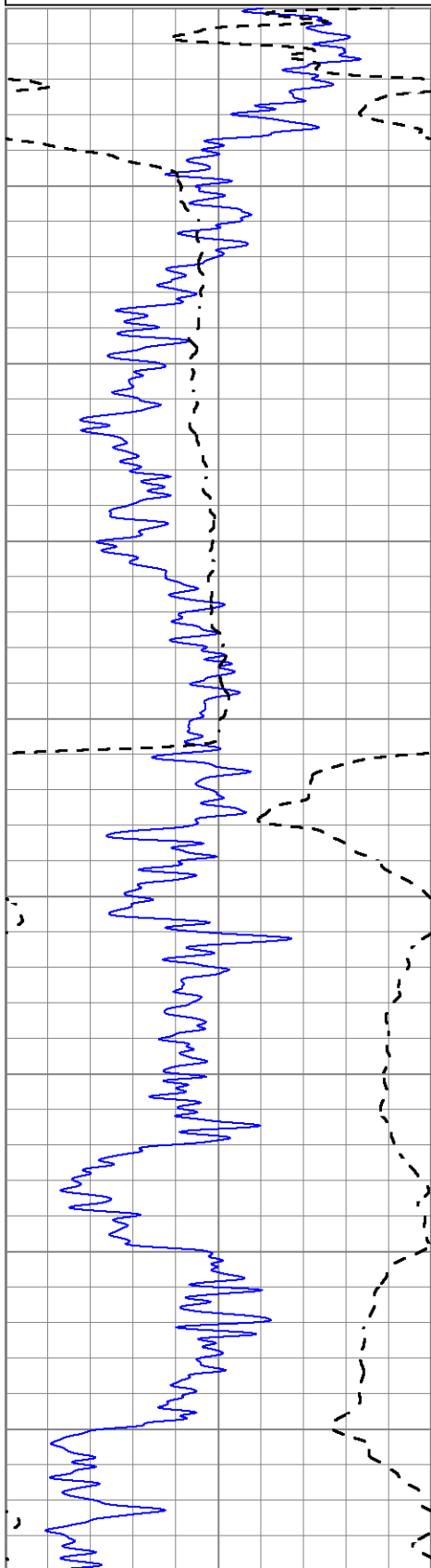


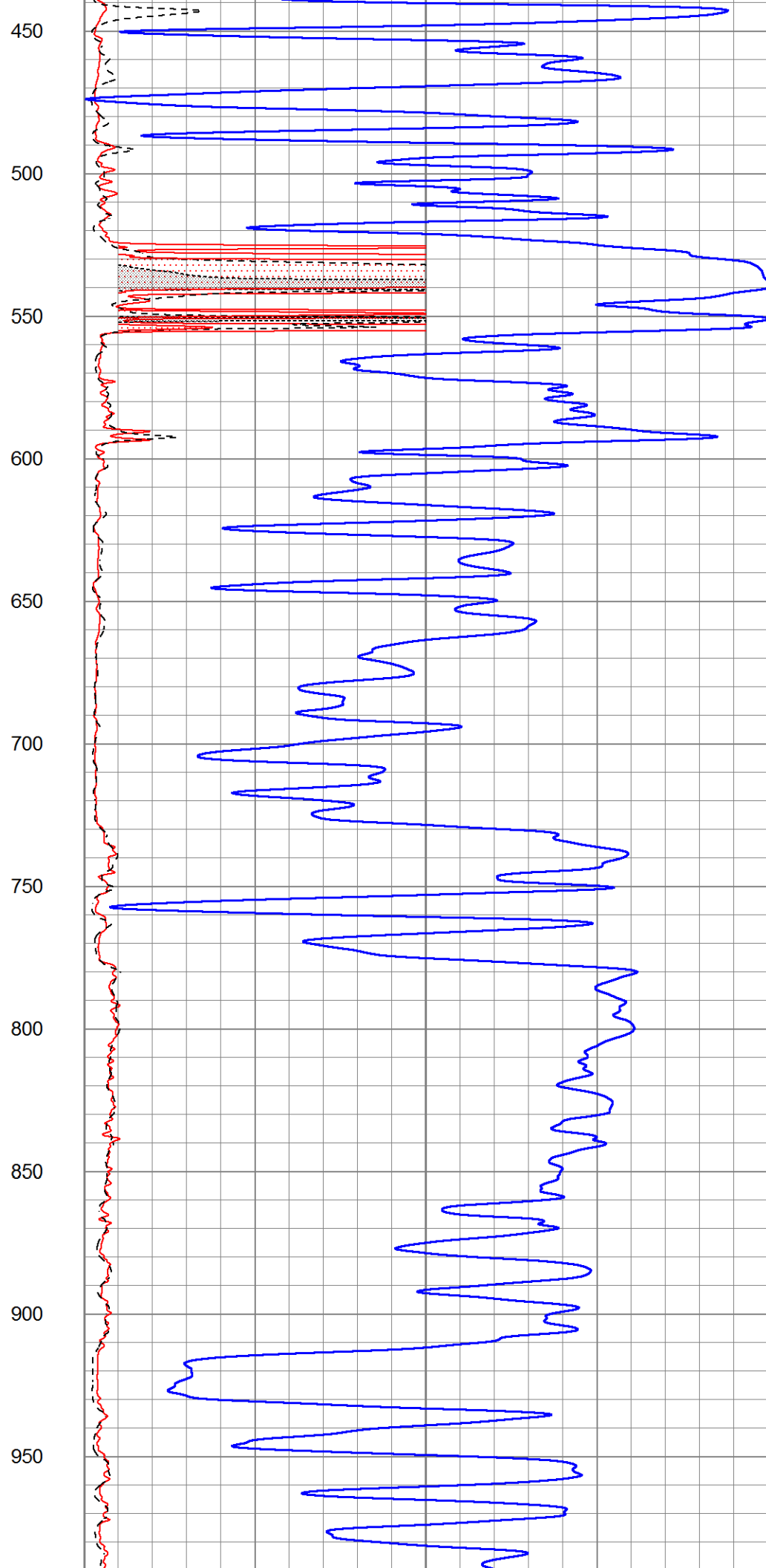
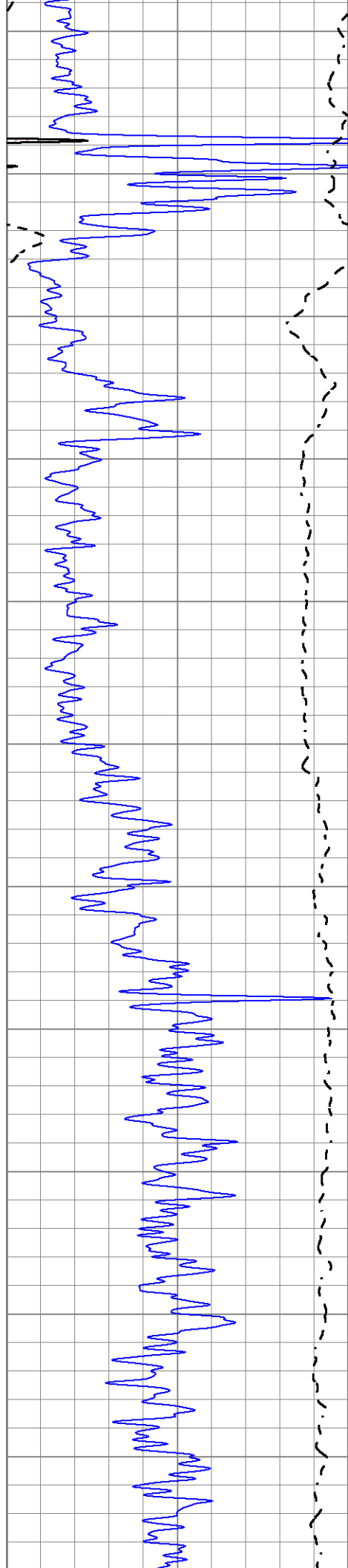
MAIN SECTION

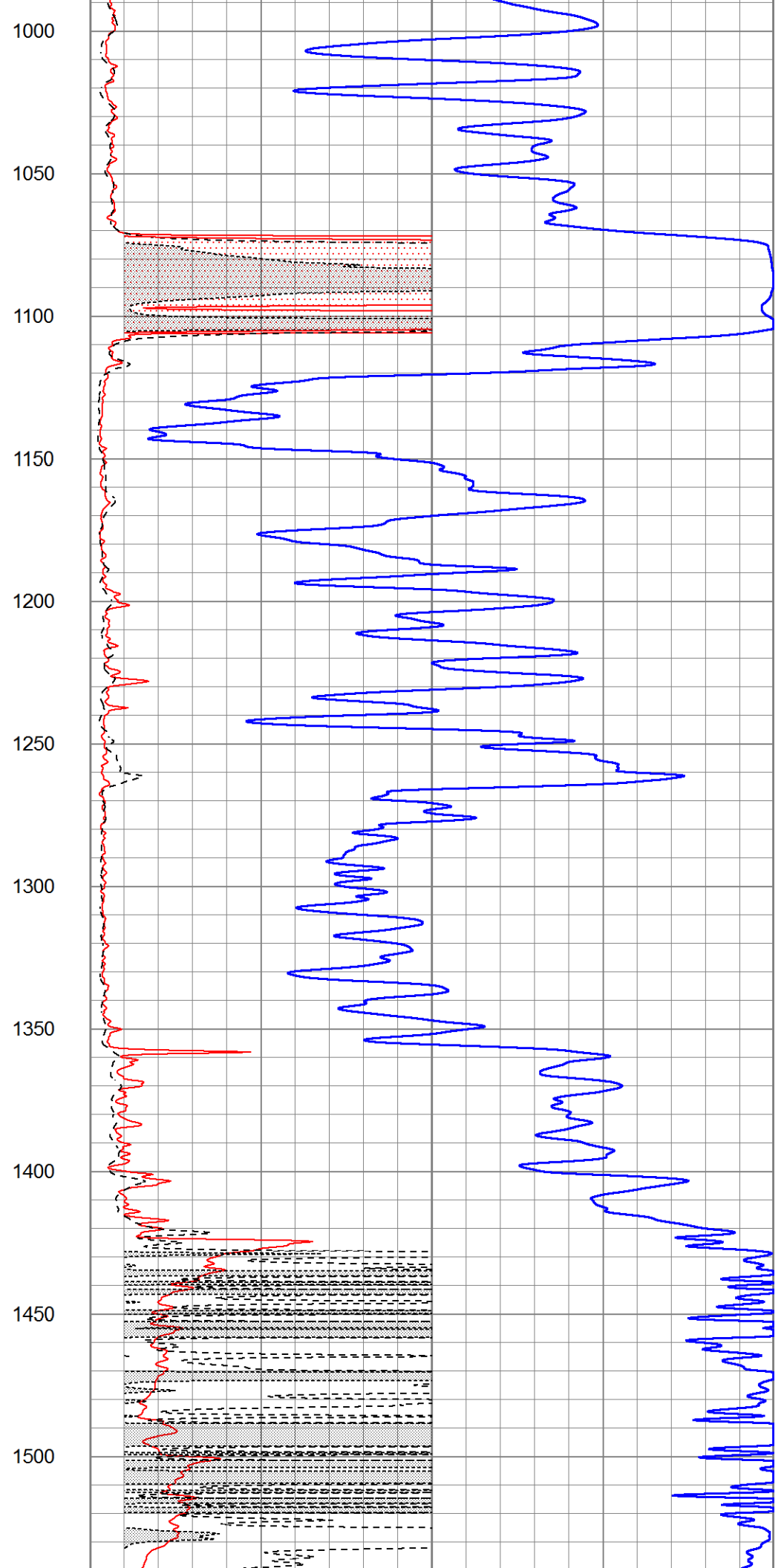
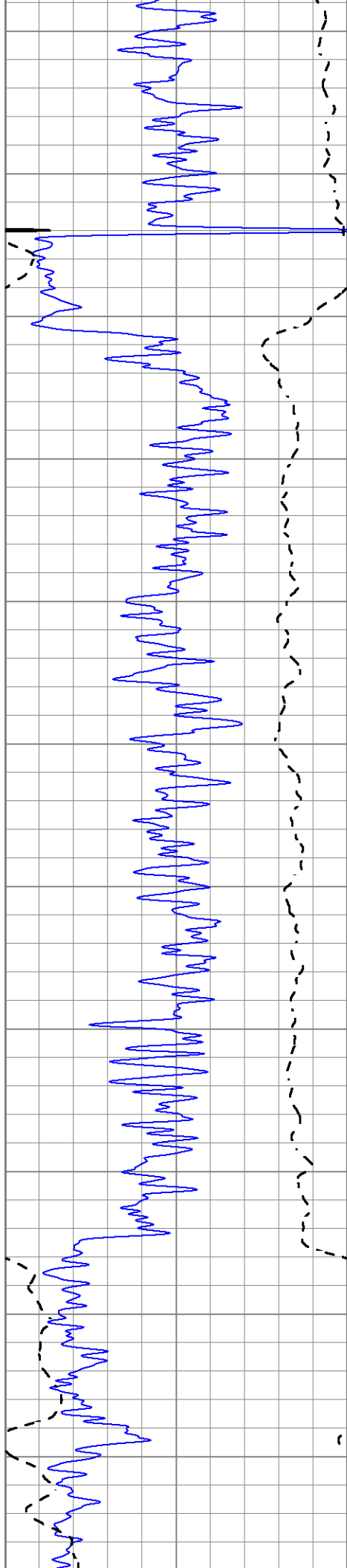
Database File 5240ddn.db
 Dataset Pathname pass3.3
 Presentation Format _dil2
 Dataset Creation Fri Nov 20 18:01:34 2020
 Charted by Depth in Feet scaled 1:600

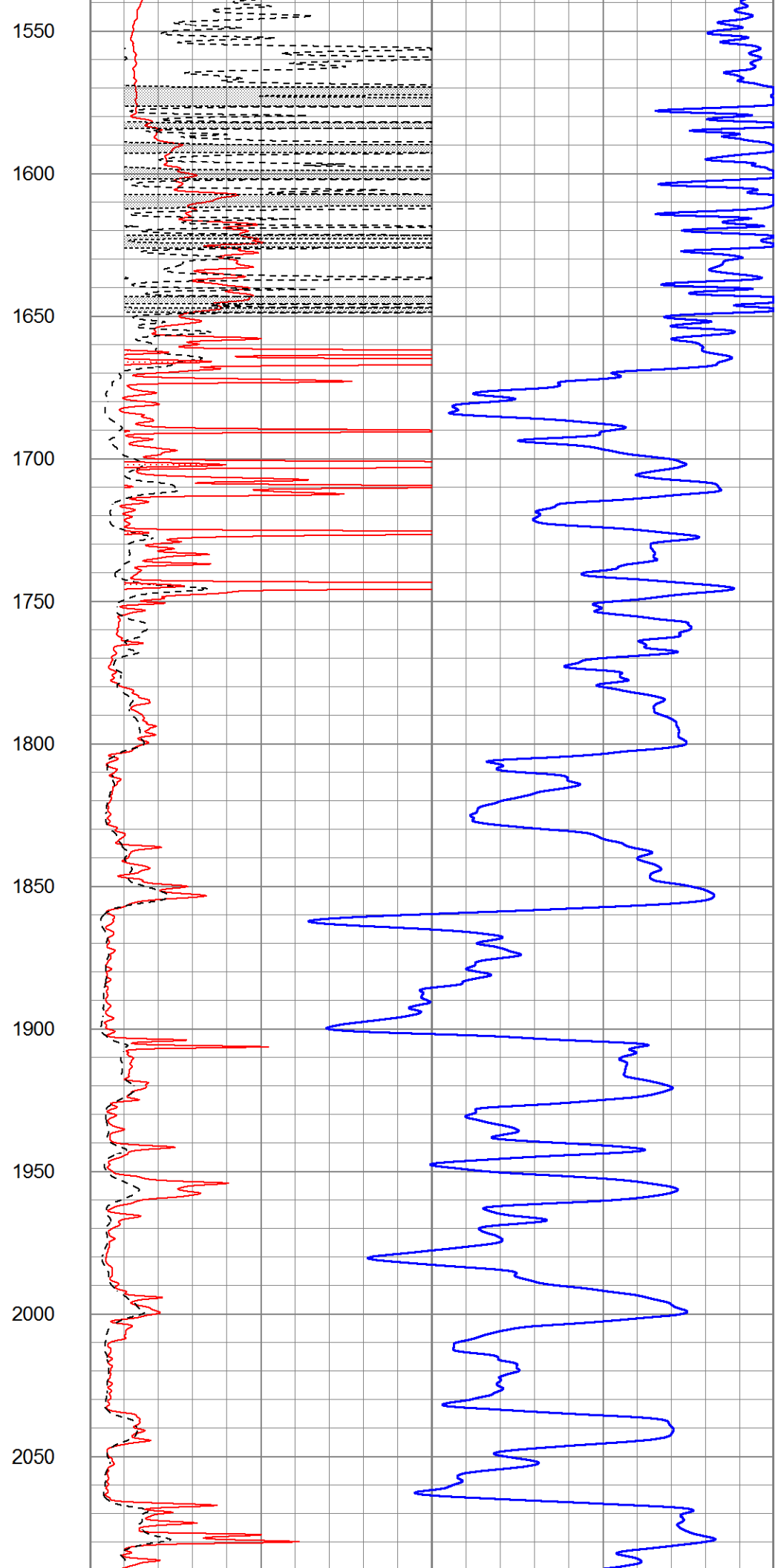
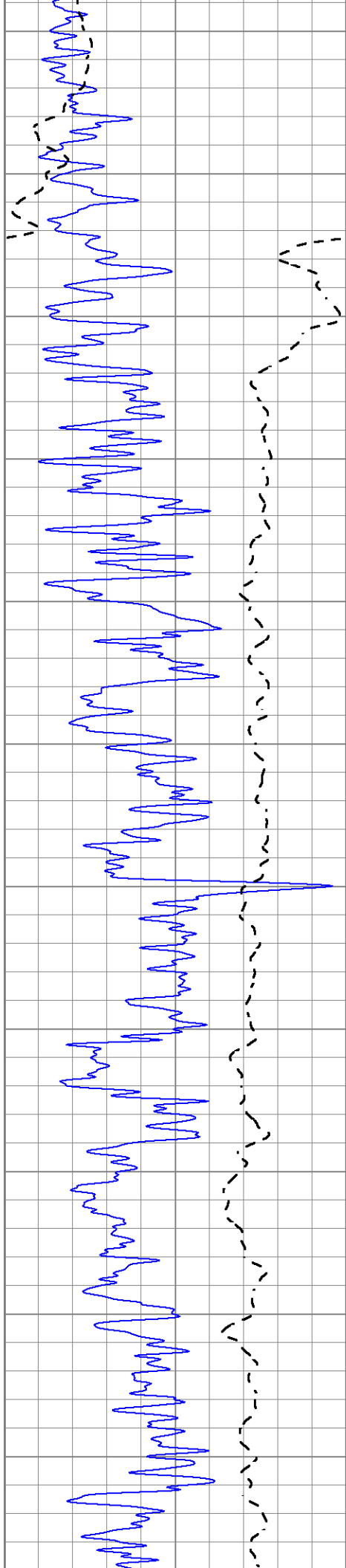
0	Gamma Ray (GAPI)	150
-100	SP (mV)	100

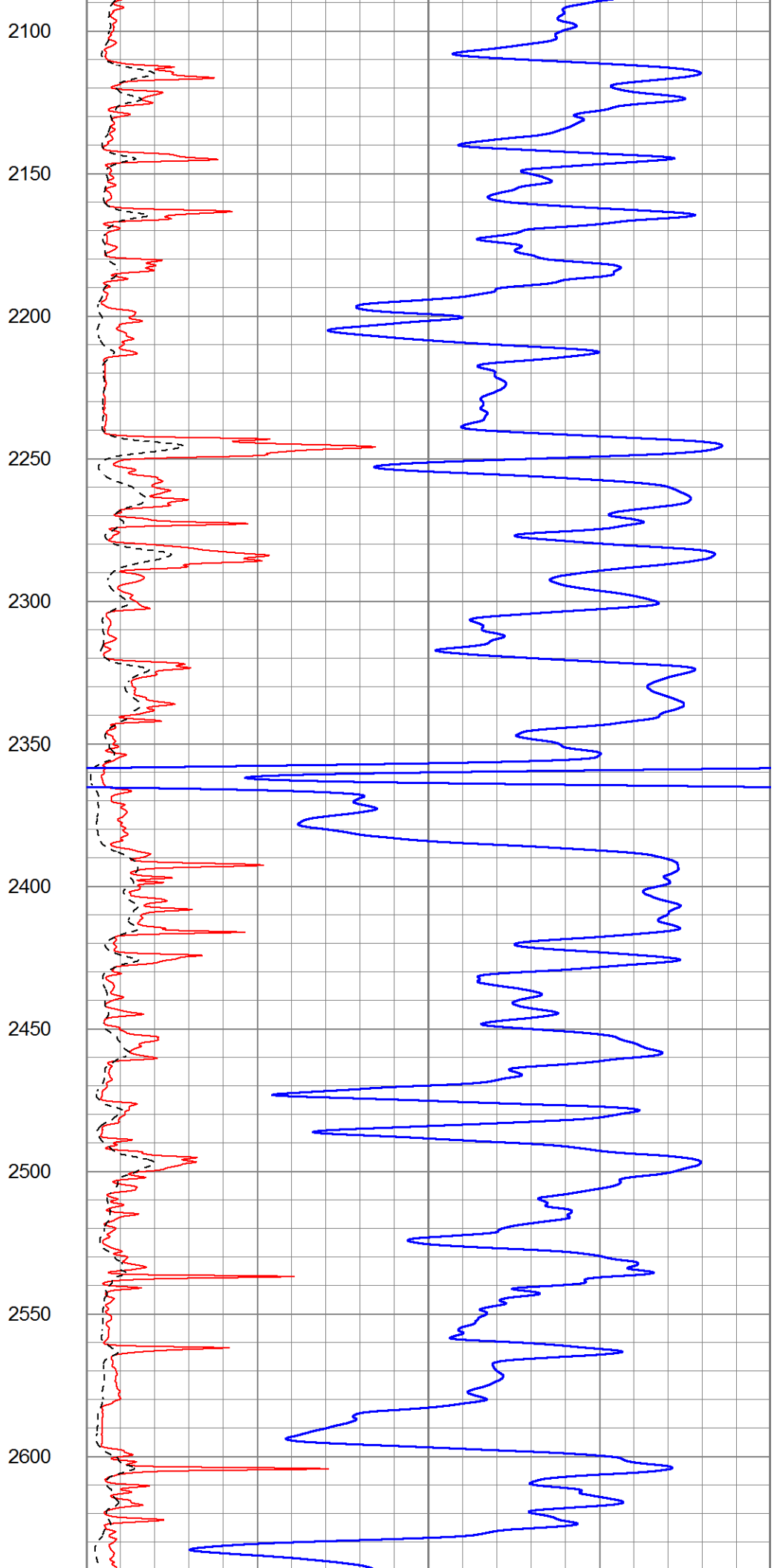
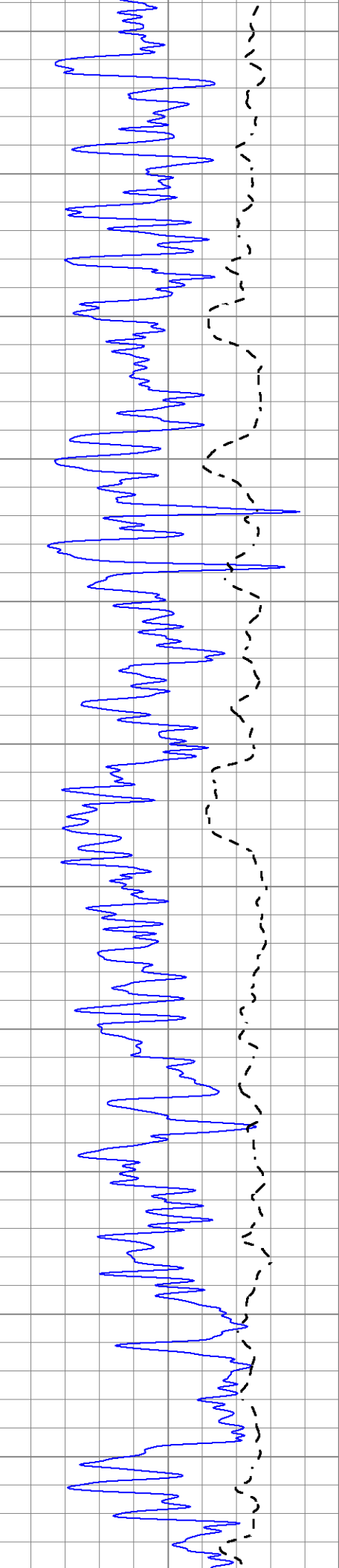
1000	CILD (mmho/m)	0
0	RLL3 (Ohm-m)	50
0	Deep Induction (Ohm-m)	50
50	RILD X10 (Ohm-m)	500
50	RLL3 X10 (Ohm-m)	500

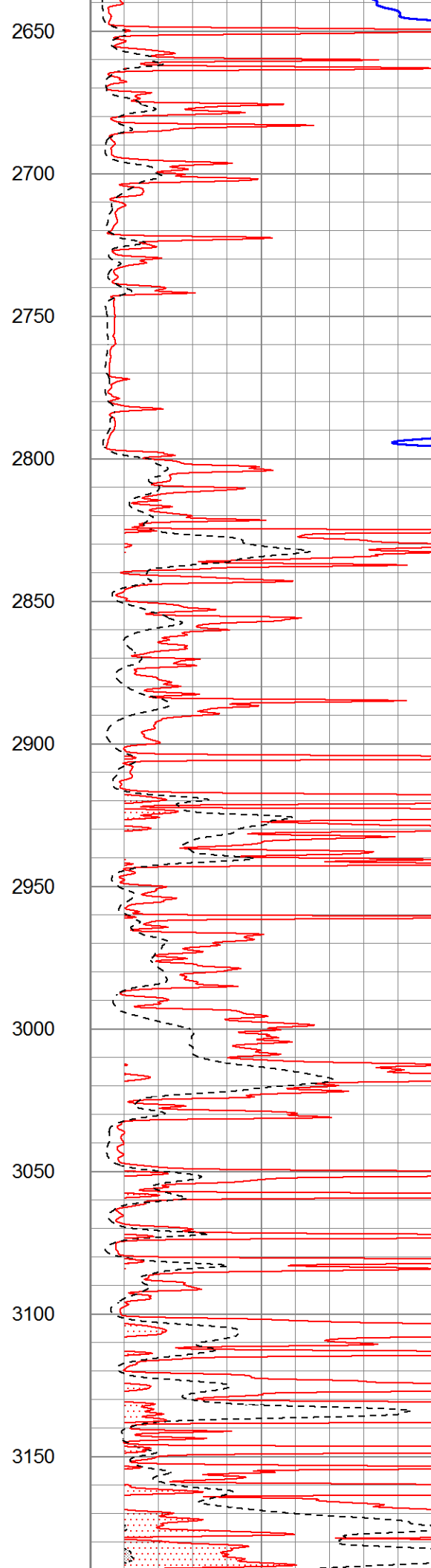
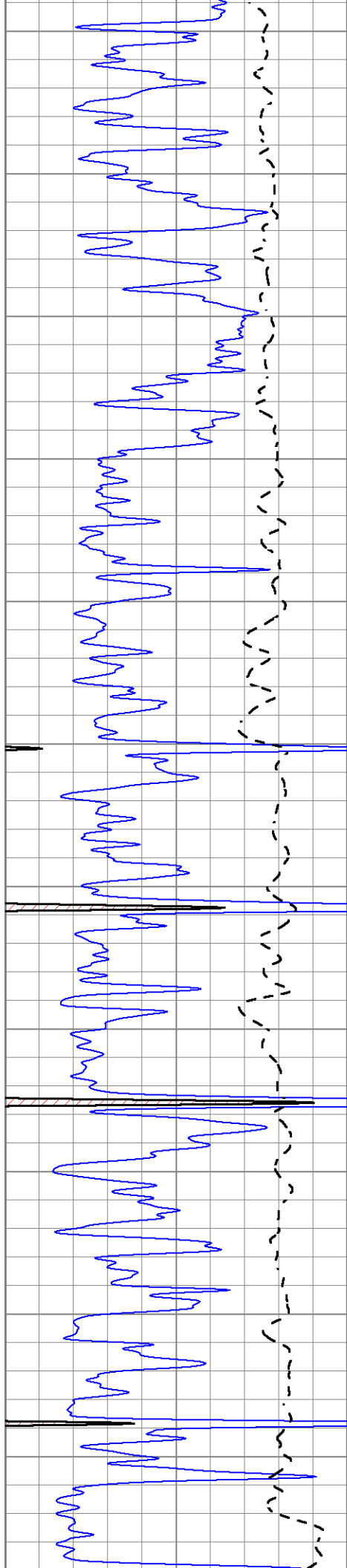


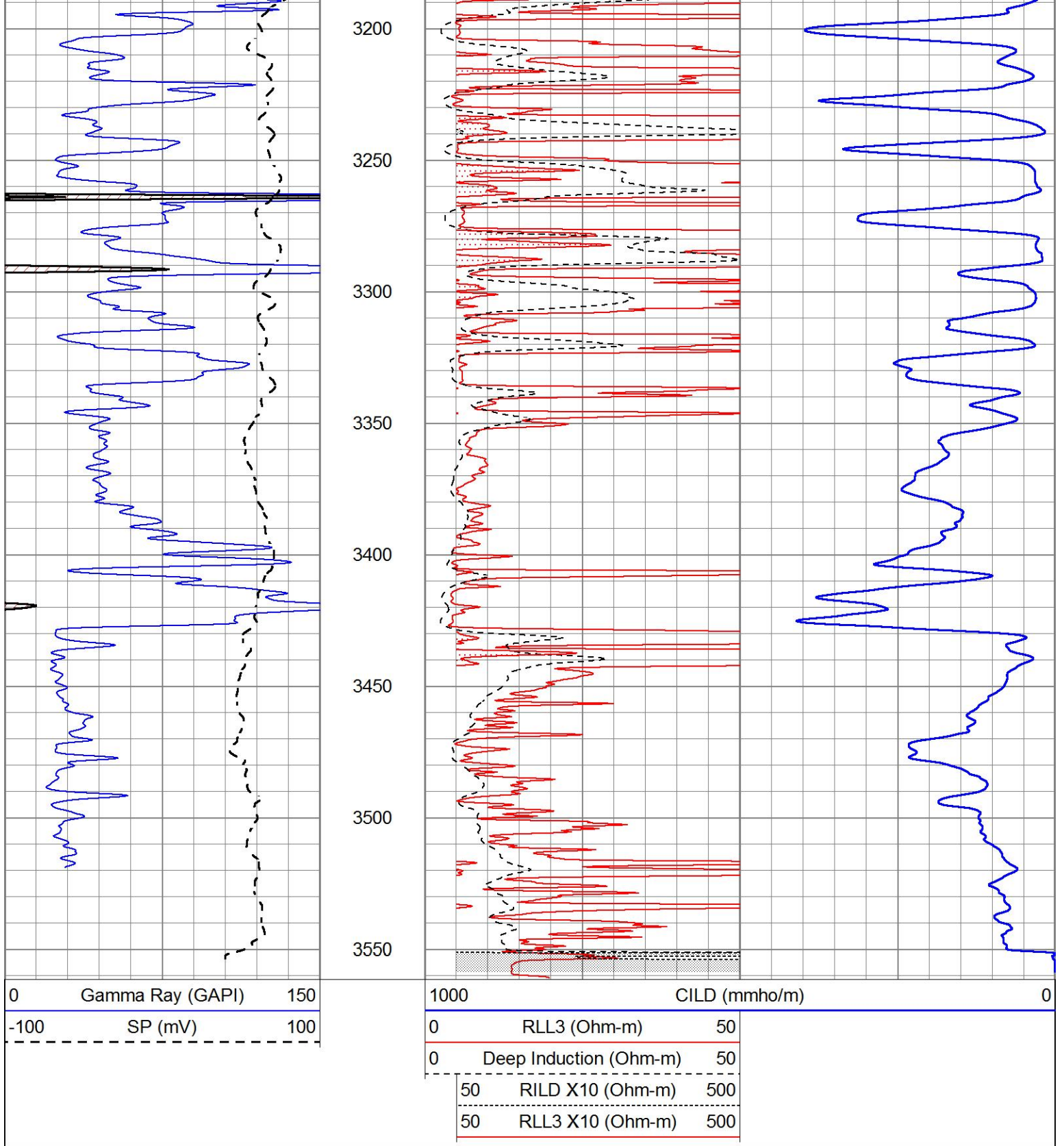










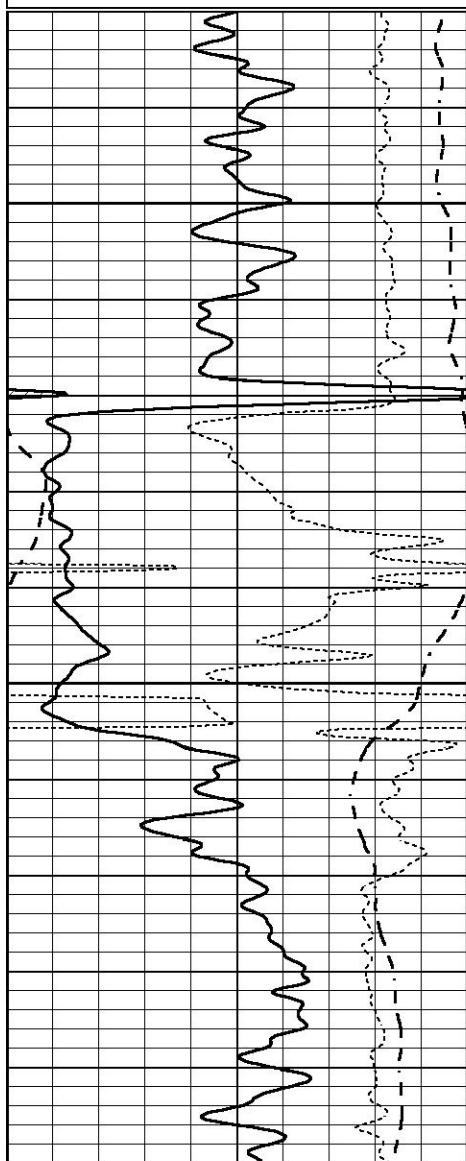


ANHYDRITE

Database File 5240ddn.db
 Dataset Pathname pass3.2
 Presentation Format _dil
 Dataset Creation Fri Nov 20 17:36:16 2020
 Charted by Depth in Feet scaled 1:240

0	GAMMA RAY (GAPI)	150
-100	SP (mV)	100
-250	Rxo/Rt	50

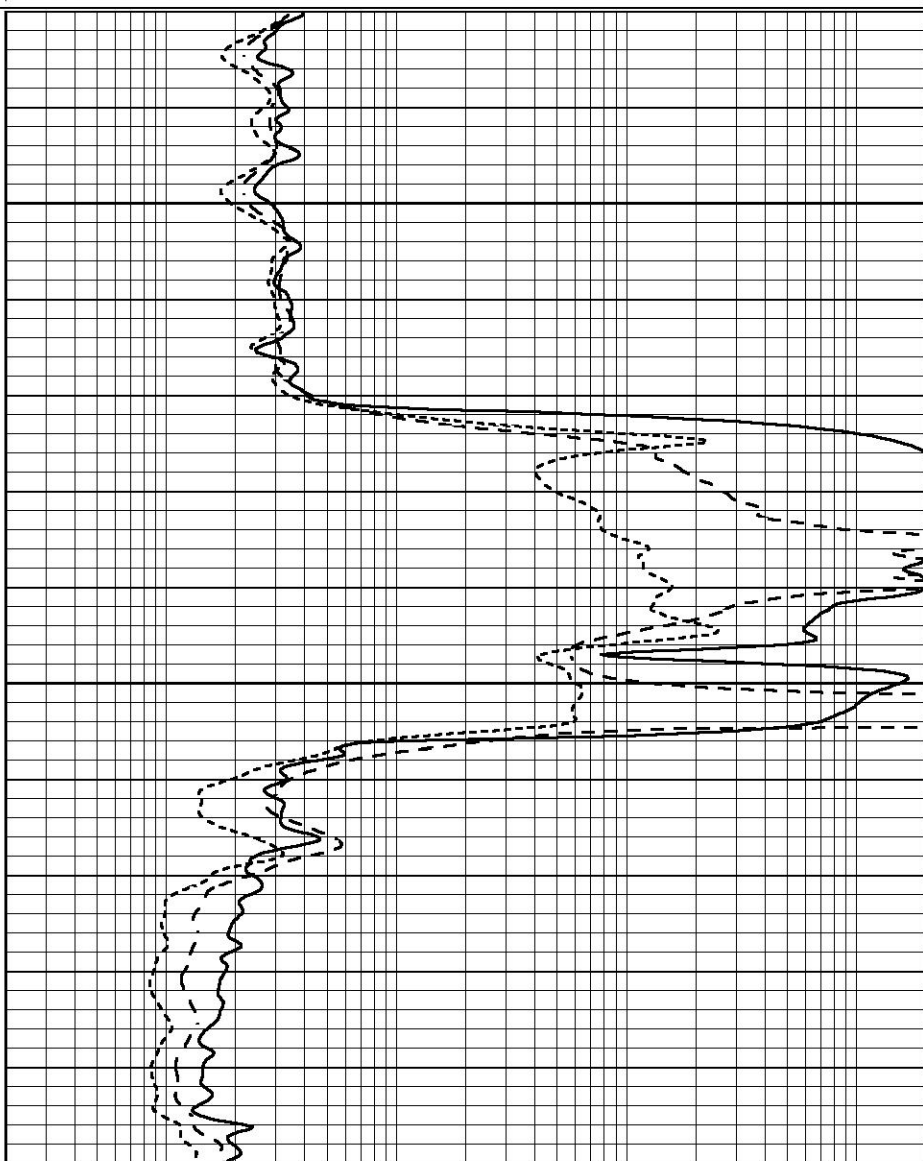
0.2	SHALLOW GUARD (Ohm-m)	2000
0.2	MEDIUM INDUCTION (Ohm-m)	2000
0.2	DEEP INDUCTION (Ohm-m)	2000



1050

1100

1150



0	GAMMA RAY (GAPI)	150
-100	SP (mV)	100
-250	Rxo/Rt	50

0.2	SHALLOW GUARD (Ohm-m)	2000
0.2	MEDIUM INDUCTION (Ohm-m)	2000
0.2	DEEP INDUCTION (Ohm-m)	2000

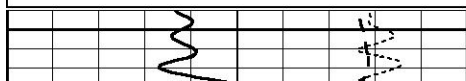


MAIN SECTION

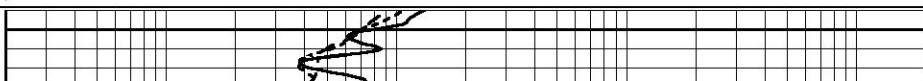
Database File 5240ddn.db
 Dataset Pathname pass3.1
 Presentation Format _dil
 Dataset Creation Fri Nov 20 17:29:31 2020
 Charted by Depth in Feet scaled 1:240

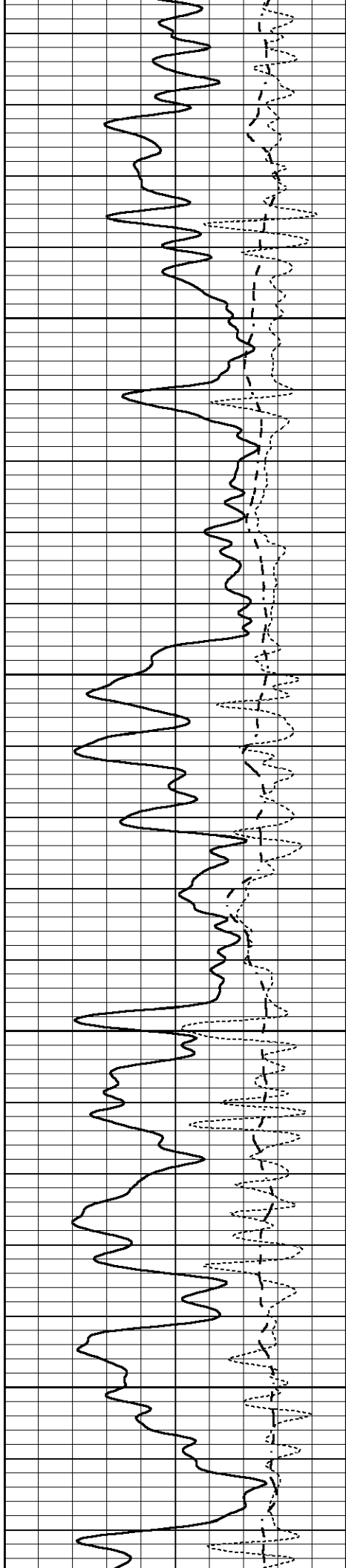
0	GAMMA RAY (GAPI)	150
-100	SP (mV)	100
-250	Rxo/Rt	50

0.2	SHALLOW GUARD (Ohm-m)	2000
0.2	MEDIUM INDUCTION (Ohm-m)	2000
0.2	DEEP INDUCTION (Ohm-m)	2000



2500



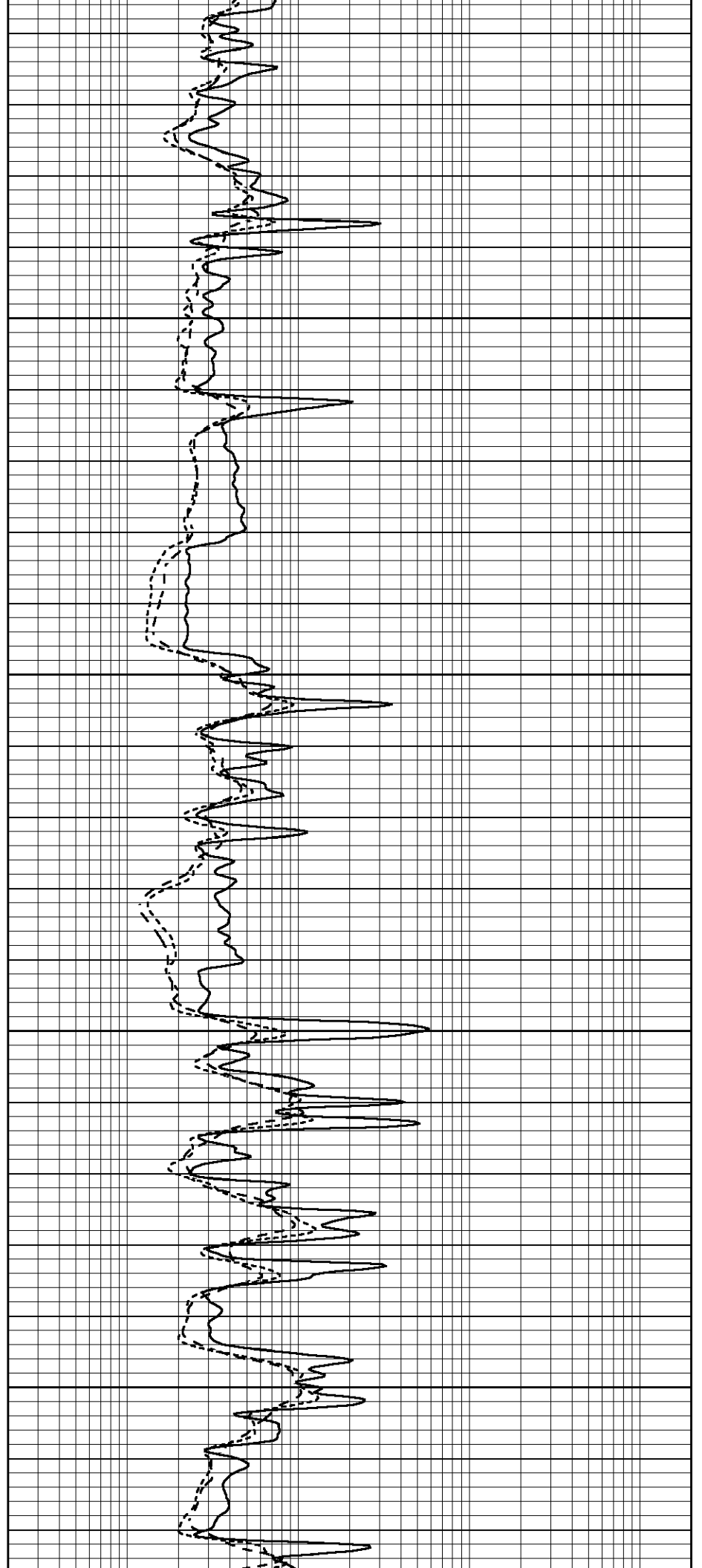


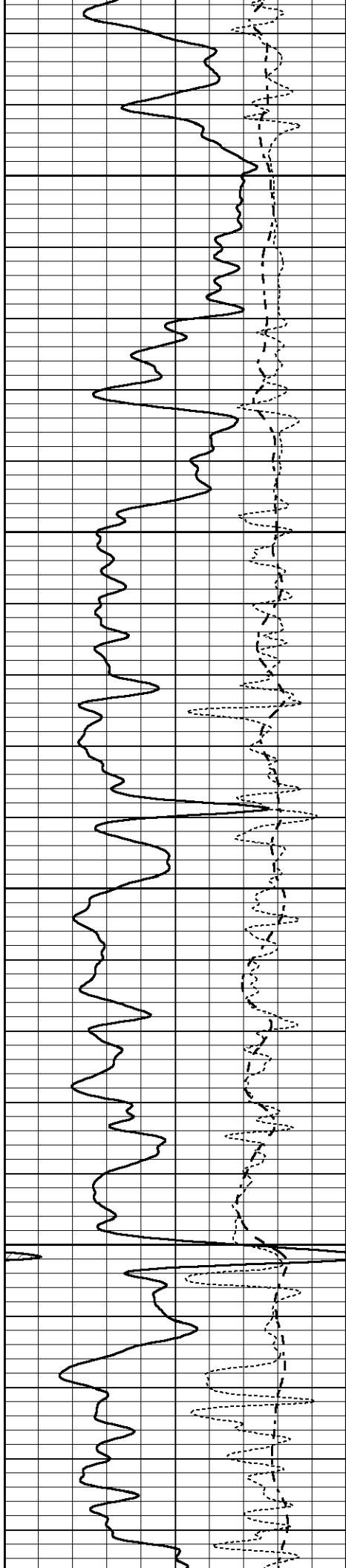
2550

2600

2650

2700



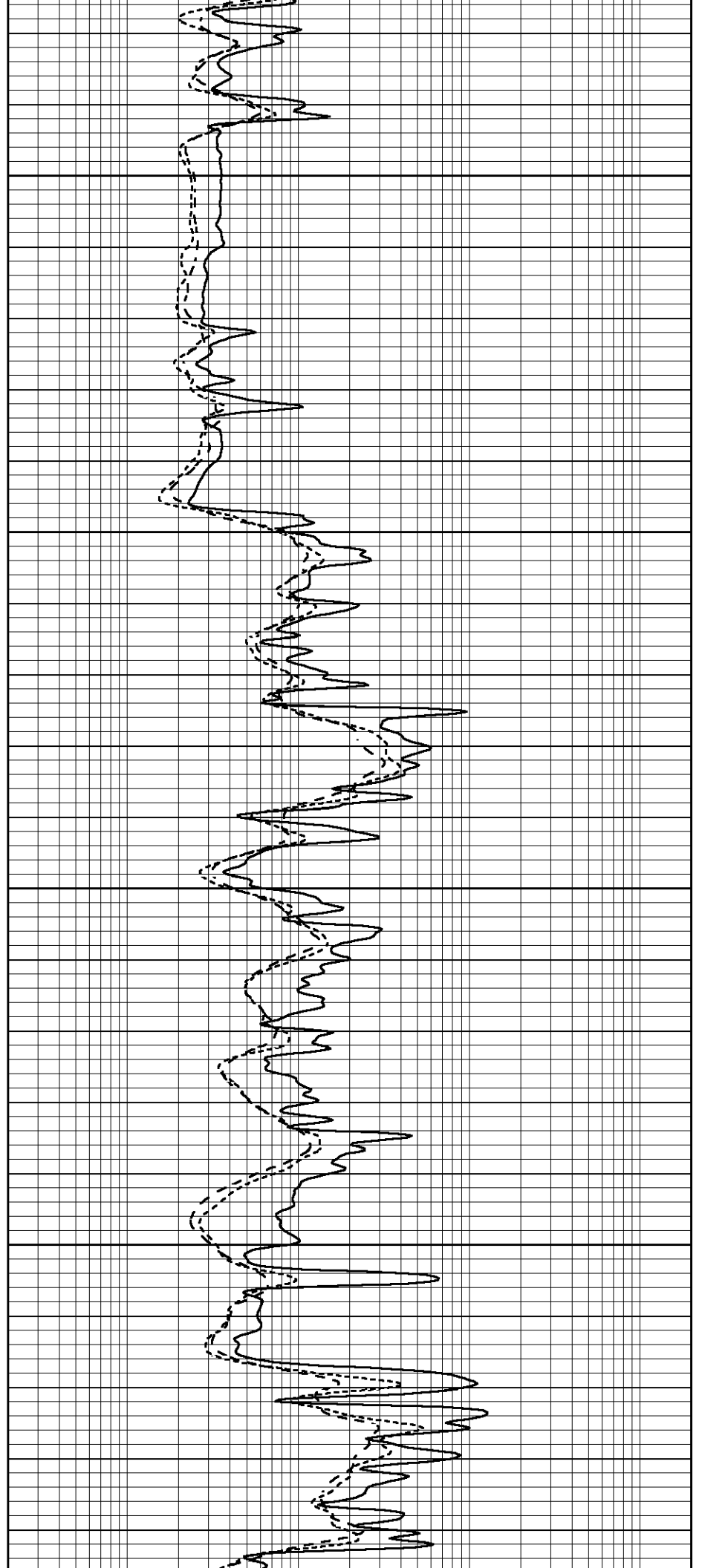


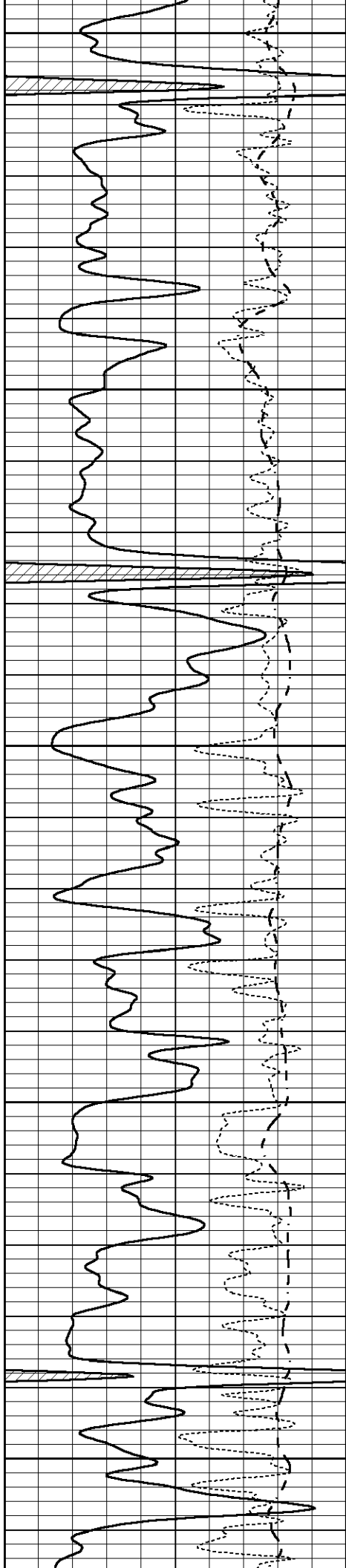
2750

2800

2850

2900





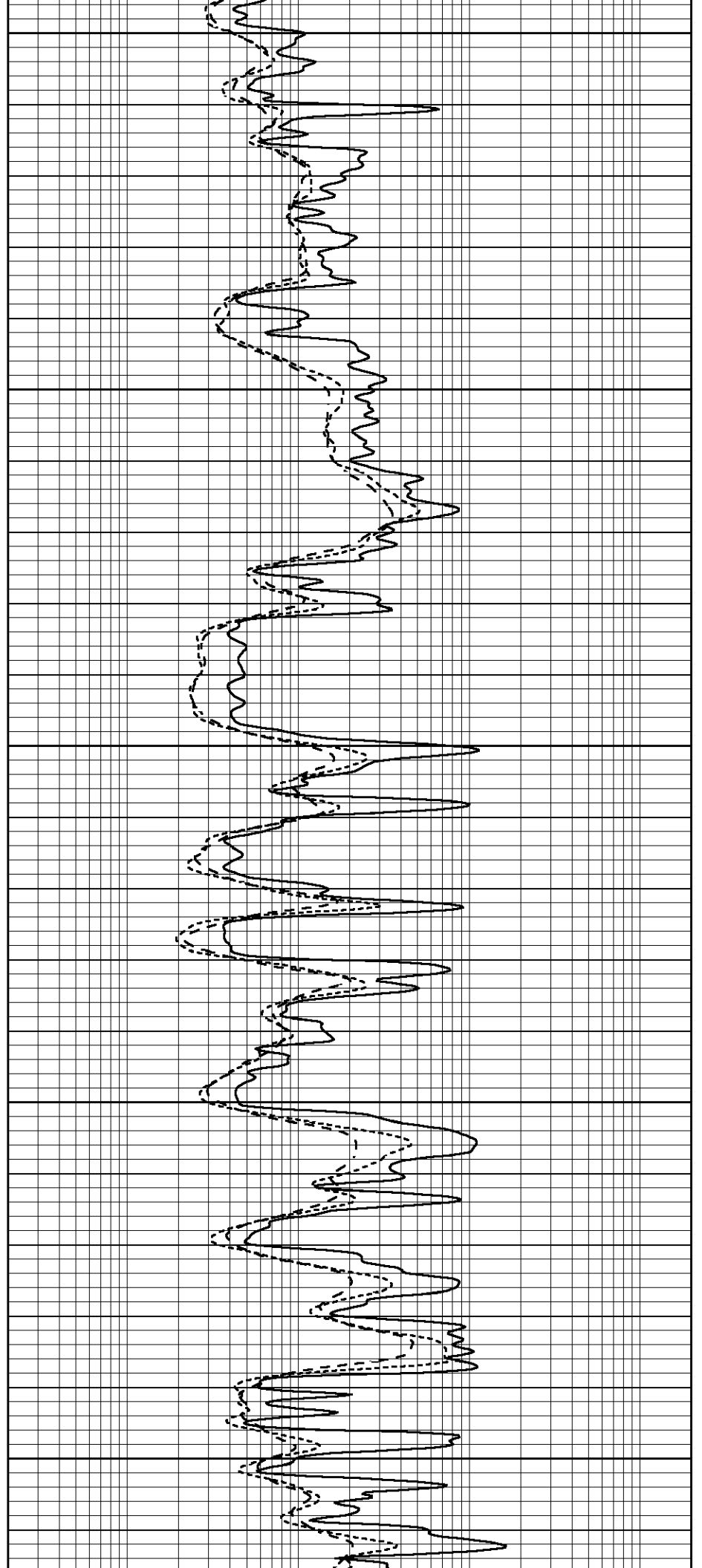
2950

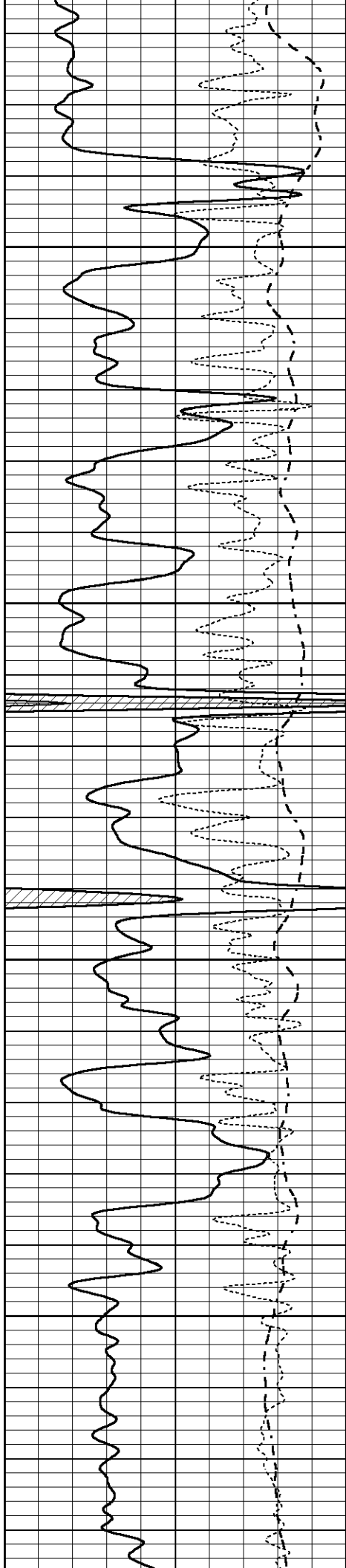
3000

3050

3100

3150



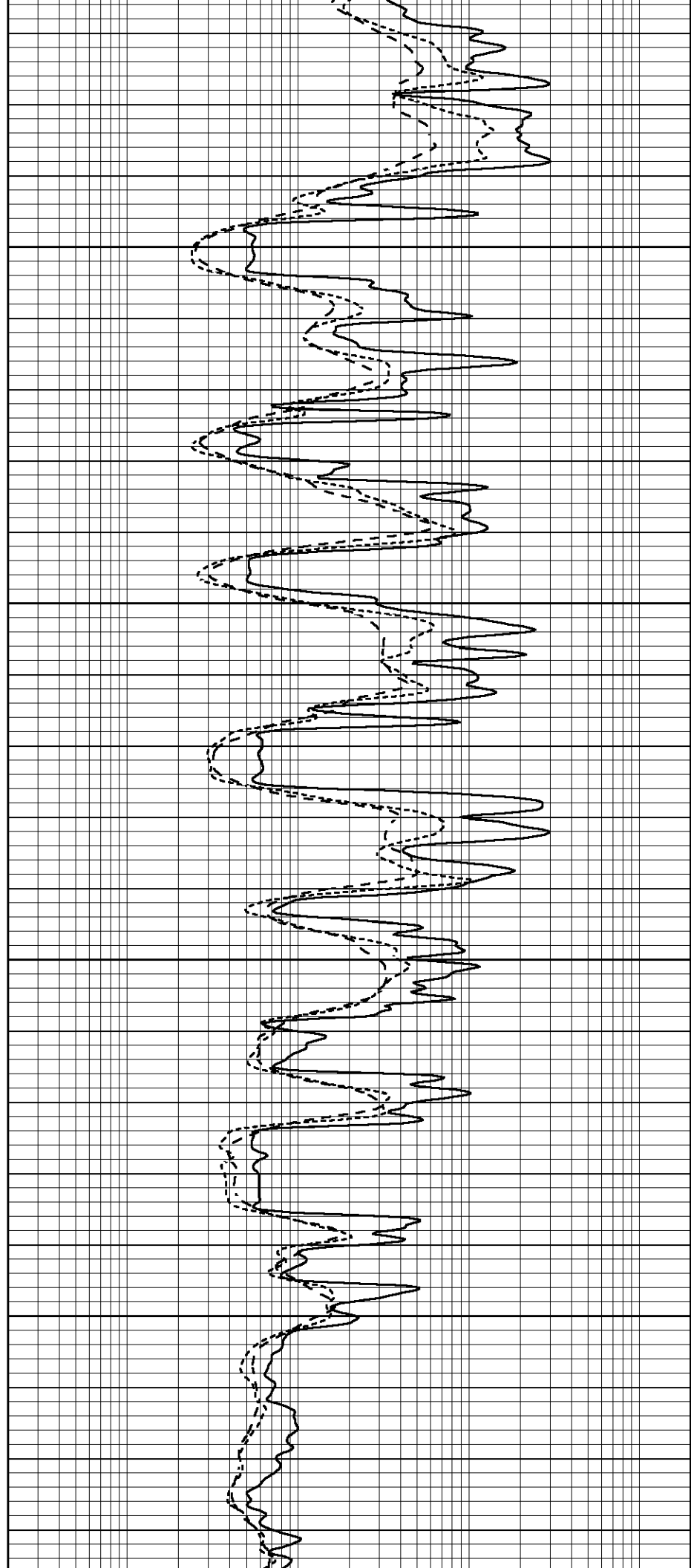


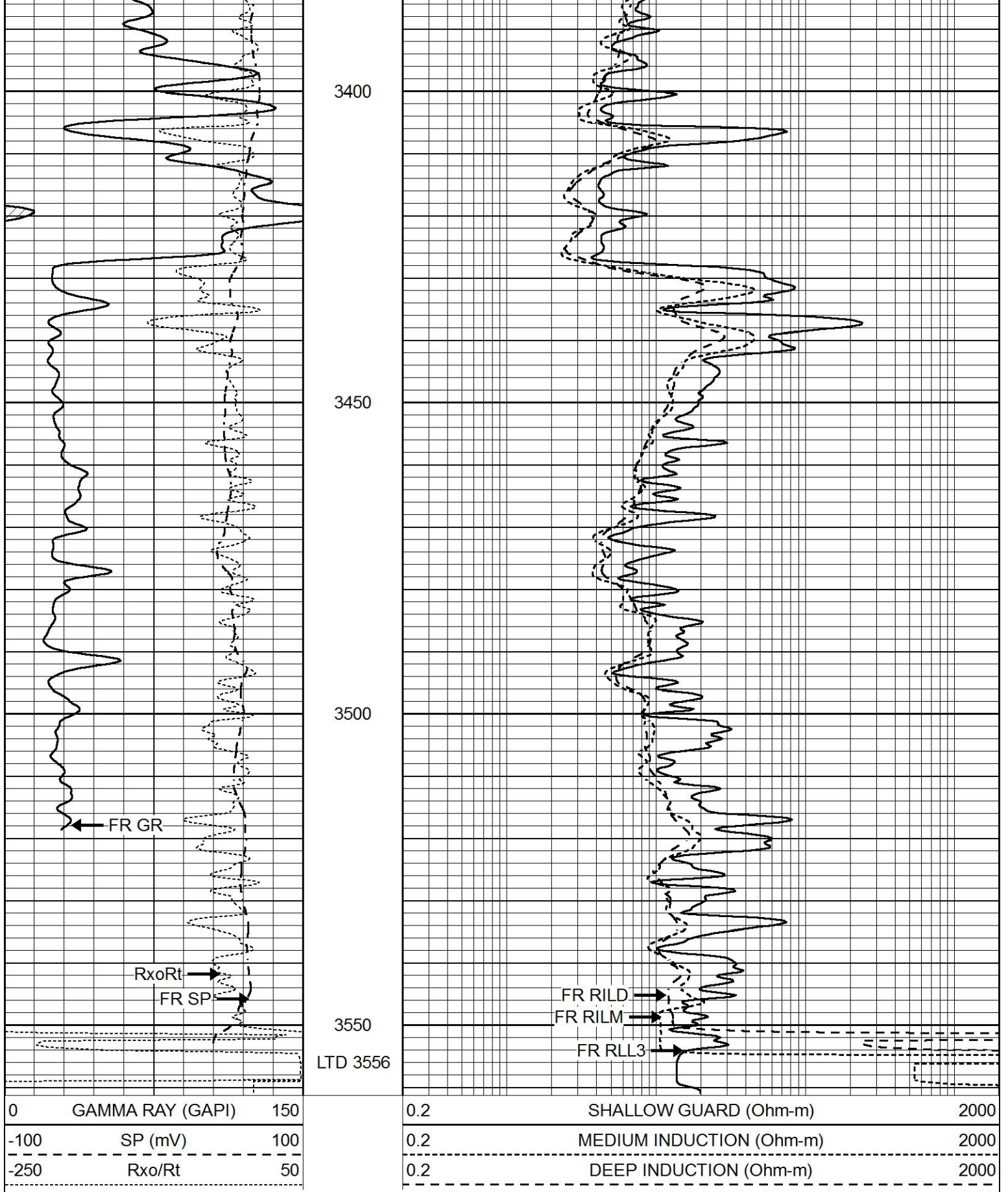
3200

3250

3300

3350



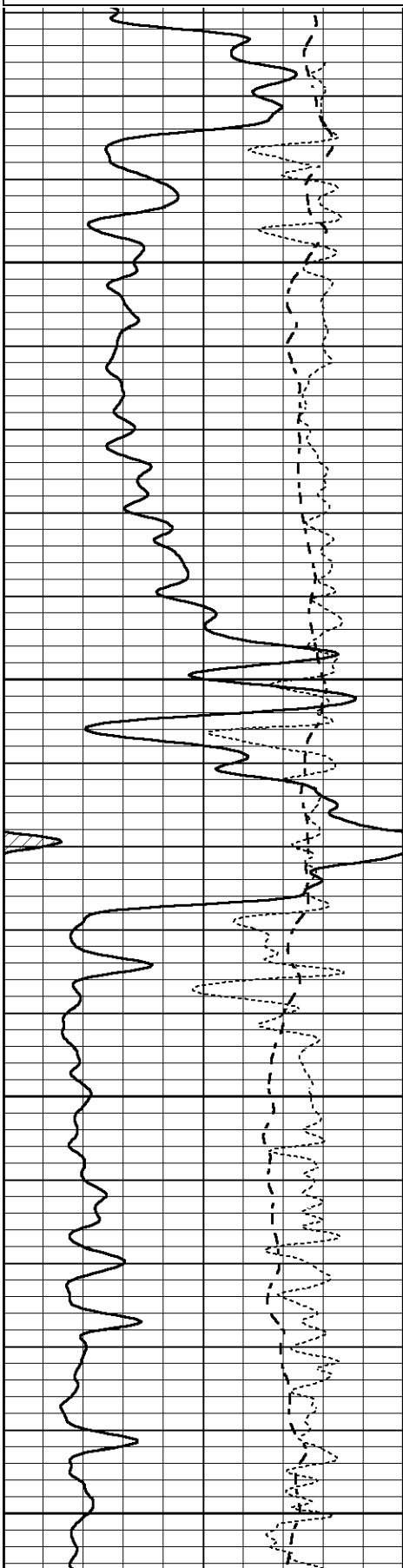


REPEAT SECTION

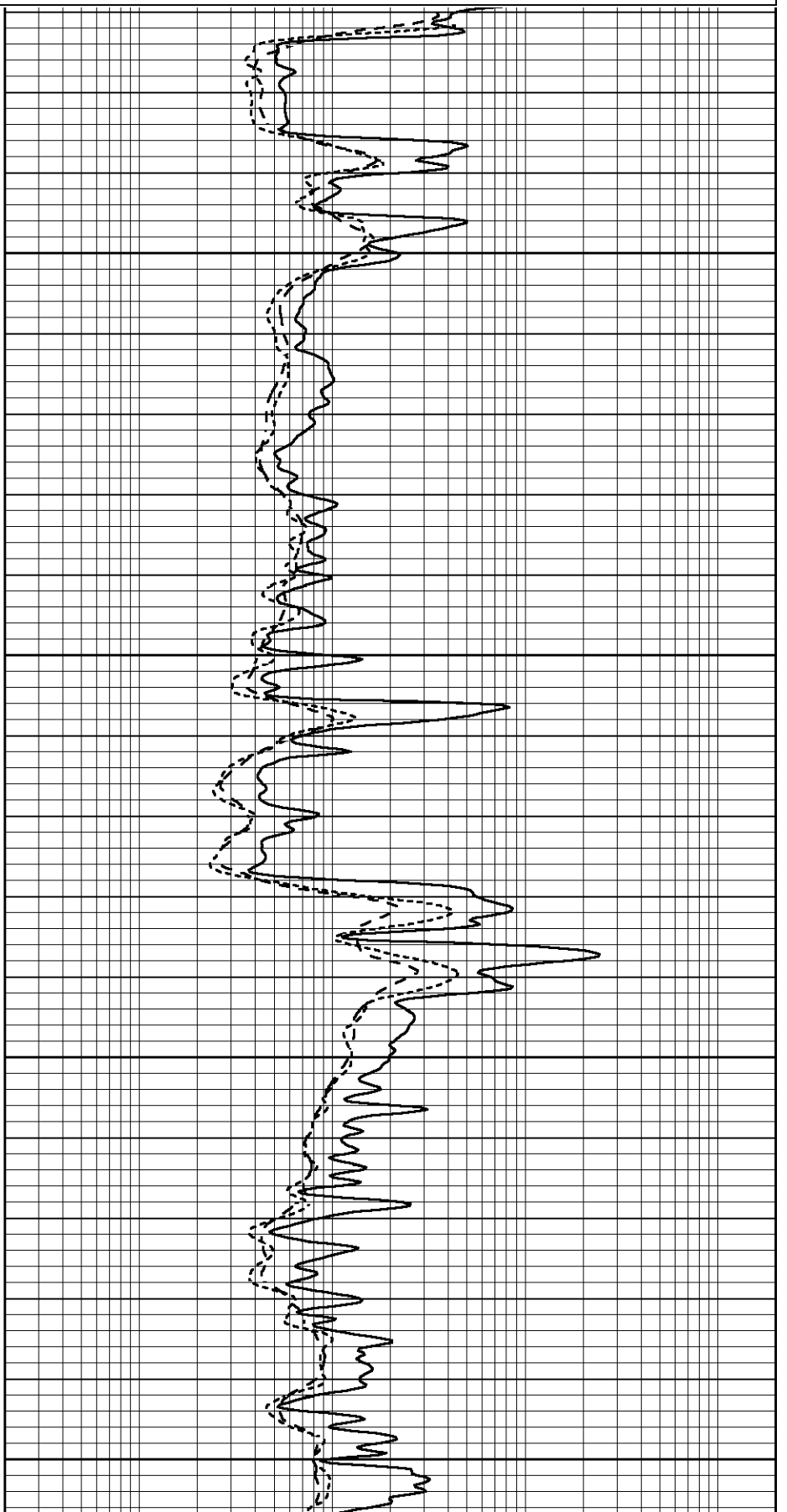
Database File 52400dm.db
Dataset Pathname pass2.1
Presentation Format _dil
Dataset Creation Fri Nov 20 17:30:55 2020
Charted by Depth in Feet scaled 1:240

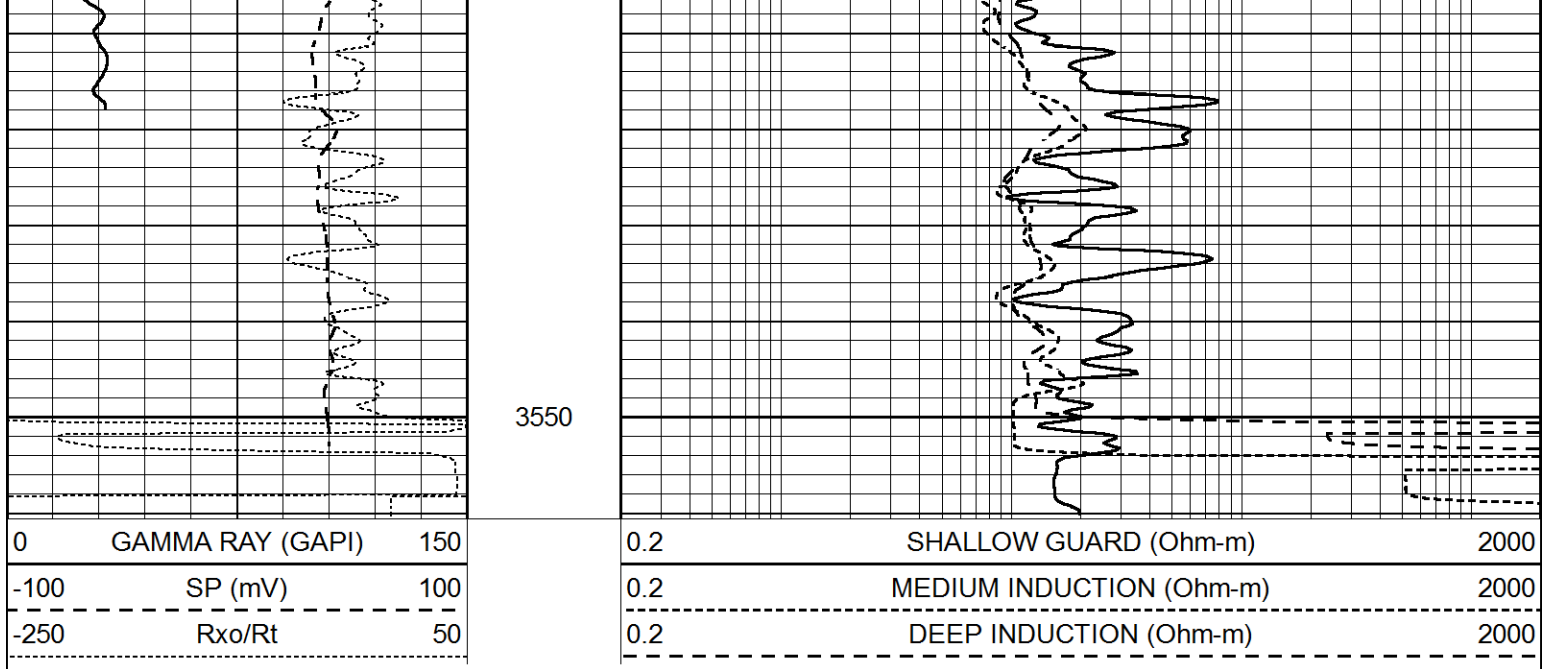
0	GAMMA RAY (GAPI)	150
-100	SP (mV)	100
-250	Rxo/Rt	50

0.2	SHALLOW GUARD (Ohm-m)	2000
0.2	MEDIUM INDUCTION (Ohm-m)	2000
0.2	DEEP INDUCTION (Ohm-m)	2000



3350
3400
3450
3500





Calibration Report

Database File 5240ddn.db
 Dataset Pathname pass2.1
 Dataset Creation Fri Nov 20 17:30:55 2020

Dual Induction Calibration Report

Serial-Model: FW1410-55-Probe
 Surface Cal Performed: Tue Feb 19 11:44:18 2019
 Downhole Cal Performed: Tue Feb 19 11:44:24 2019
 After Survey Verification Performed: Tue Feb 19 11:44:27 2019

Surface Calibration

Loop:	Readings			References			Results	
	Air	Loop		Air	Loop		m	b
Deep	0.011	0.656	V	1.000	400.000	mmho/m	618.595	-5.524
Medium	-0.000	0.731	V	1.000	464.000	mmho/m	632.856	1.197
Internal:	Zero	Cal		Zero	Cal		m	b
Deep	0.007	0.649	V	0.000	400.000	mmho/m	623.784	-4.595
Medium	0.004	0.743	V	0.000	464.000	mmho/m	627.284	-2.251

Downhole Calibration

	Readings			References			Results	
	Zero	Cal		Zero	Cal		m'	b'
Deep	-0.824	395.917	mmho/m	-0.976	397.550	mmho/m	1.004	-0.149
Medium	3.565	471.327	mmho/m	3.468	471.590	mmho/m	1.001	-0.099
LL3		7.503	V		1500.000	Ohm-m		
		0.001	V		20.000	Ohm-m		
		-7.481	V		3745.000	mmho-m		

After Survey Verification

	Readings			Targets			Results	
	Zero	Cal		Zero	Cal		m'	b'
Deep	0.000	0.000	mmho/m	-0.824	395.917	mmho/m	1.000	0.000
Medium	0.000	0.000	mmho/m	3.565	471.327	mmho/m	1.000	0.000
LL3		0.000	Ohm-m		1500.000	Ohm-m		
		0.000	Ohm-m		20.000	Ohm-m		

Litho Density Calibration Report
 Serial: 140703
 Model: V4_10P
 Source Number: 74GBq-19

Master Calibration Performed: Fri Oct 30 10:28:51 2020

	Background	Aluminum	Magnesium		
Window 1	542.44	5567.78	24103.74	cps	
Window 2	44.66	1254.11	5862.88	cps	
Window 4	233.89	1249.47	5395.29	cps	
Window 5	561.63	8508.97	16290.56	cps	
Window 6	44.30	1445.42	2841.86	cps	
Window 8	267.45	2710.48	5092.88	cps	
Bulk Density	-	2.6020	1.6830	g/cc	
Pe	-	3.0000	2.5070	b/e	
LS Alpha:	: -1.8545	SS Alpha:	: -0.7763	LS CPE:	: 1.1359
LS Beta:	: 130052.2542	SS Beta:	: 19130.5414	SS CPE:	: 1.4655

Before Survey Background Counts Verification Performed: Wed Dec 31 18:00:00 1969

Window 1	0.00	cps
Window 2	0.00	cps
Window 4	0.00	cps
Window 5	0.00	cps
Window 6	0.00	cps
Window 8	0.00	cps

After Survey Background Counts Verification Performed: Wed Dec 31 18:00:00 1969

Window 1	0.00	cps
Window 2	0.00	cps
Window 4	0.00	cps
Window 5	0.00	cps
Window 6	0.00	cps
Window 8	0.00	cps

Lithodensity Caliper Calibration Performed: Fri Oct 30 10:28:51 2020

Results	Readings	References (in)		Gain	Offset
Low	High	Low	High		
4306.9	7563.2	8.0	14.0	0.0	0.1

Before Survey Caliper Verification Performed:

	Reference	Reading
Caliper (in)	_____	_____

After Survey Caliper Verification Performed:

	Reference	Reading
Caliper (in)	_____	_____

Compensated Neutron Calibration Report

Serial Number:	080621PMC
Tool Model:	NABORS

PRE-SURVEY VERIFICATION

Detector	Readings	Measured	Target
Short Space	cps		
Long Space	cps	pu	pu

POST-SURVEY VERIFICATION

Detector	Readings	Measured	Target
Short Space	cps		
Long Space	cps	pu	pu

Gamma Ray Calibration Report

Serial Number:	7	
Tool Model:	Probe1	
Performed:	Tue Dec 10 10:02:55 2019	
Calibrator Value:	1.0	GAPI
Background Reading:	0.0	cps
Calibrator Reading:	1.0	cps
Sensitivity:	0.4800	GAPI/cps