



**COMPENSATED  
DENSITY/NEUTRON  
LOG**

Company ANCHOR BAY PETROLEUM, LLC.

Well SIMPSON #1

Field

County ELLIS

State KANSAS

Location: API #: 15-051-26992-0000

710' FSL & 335' FEL

Other Services  
DILMEL

SEC 3 TWP 11S RGE 17W

Elevation

Permanent Datum GROUND LEVEL Elevation 1862  
Log Measured From KELLY BUSHING 5' A.G.L  
Drilling Measured From KELLY BUSHING

K.B. 1867  
D.F. 1865  
G.L. 1862

Date	11/20/20
Run Number	ONE
Depth Driller	3555
Depth Logger	3556
Bottom Logged Interval	3532
Top Log Interval	2500
Casing Driller	8 5/8" @ 213
Casing Logger	213
Bit Size	7 7/8
Type Fluid in Hole	CHEMICAL MUD
Density / Viscosity	9.4/57
pH / Fluid Loss	9.0/11.2
Source of Sample	FLOWLINE
Rm @ Meas. Temp	.50 @ 62F
Rmf @ Meas. Temp	.37 @ 62F
Rmc @ Meas. Temp	.60 @ 62F
Source of Rmf / Rmc	MEASUREMENT
Rm @ BHT	.27 @ 112F
Time Circulation Stopped	2 HOURS
Time Logger on Bottom	////
Maximum Recorded Temperature	112F
Equipment Number	3802
Location	HAYS, KANSAS
Recorded By	JASON CAPPELLUCCI
Witnessed By	ED GLASSMAN

<<< Fold Here >>>

All interpretations are opinions based on inferences from electrical or other measurements and we cannot and do not guarantee the accuracy or correctness of any interpretation, and we shall not, except in the case of gross or willful negligence on our part, be liable or responsible for any loss, costs, damages, or expenses incurred or sustained by anyone resulting from any interpretation made by any of our officers, agents or employees. These interpretations are also subject to our general terms and conditions set out in our current Price Schedule.

Comments

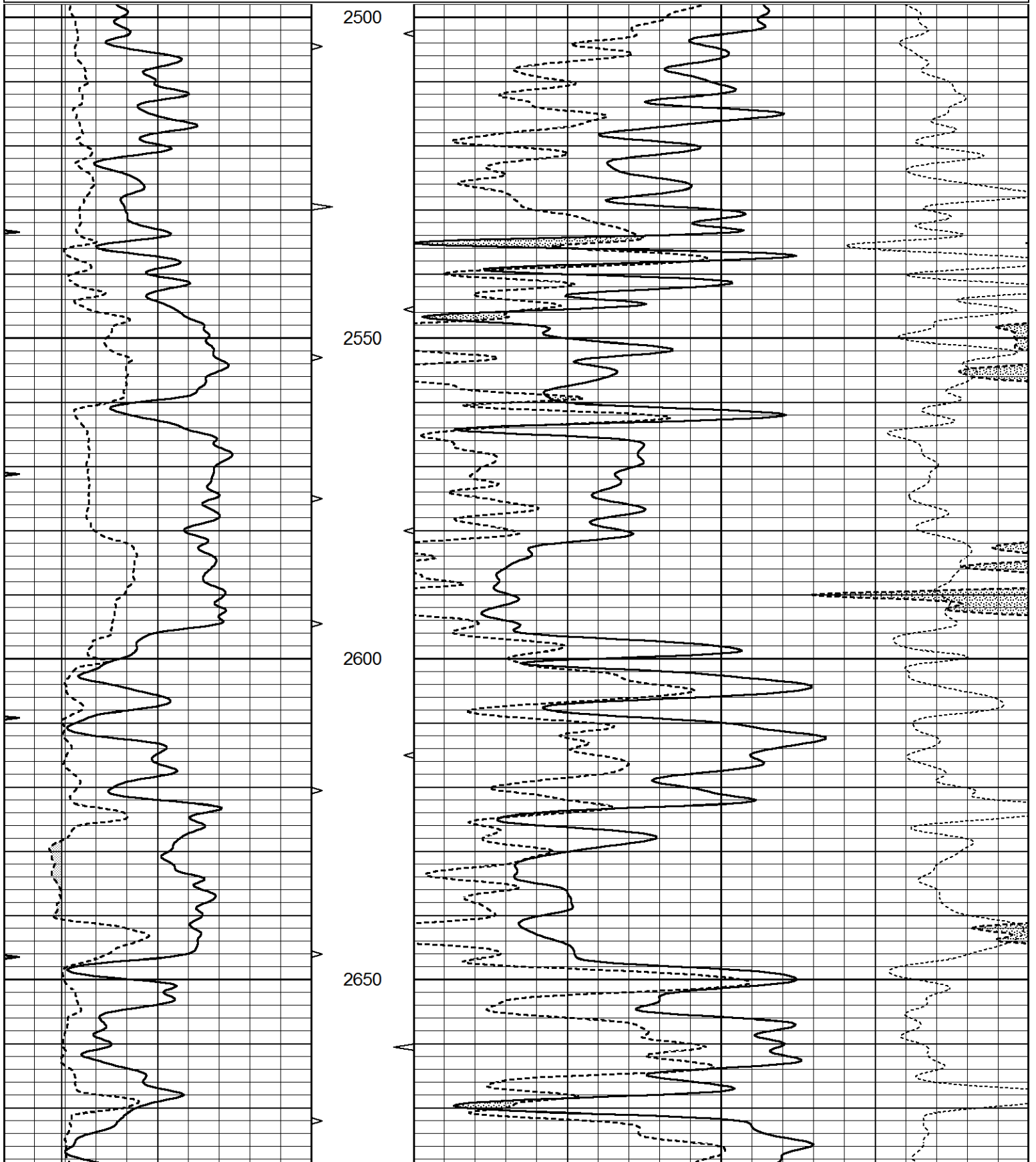
THANK YOU FOR USING ELI WIRELINE SERVICES, HAYS, KS. ( 785 ) 628-6395  
DIRECTIONS  
HAYS, KS. - NORTH TO SALINE RIVER RD. - EAST TO CODELL RD. - 1 NORTH - NORTHWEST INTO

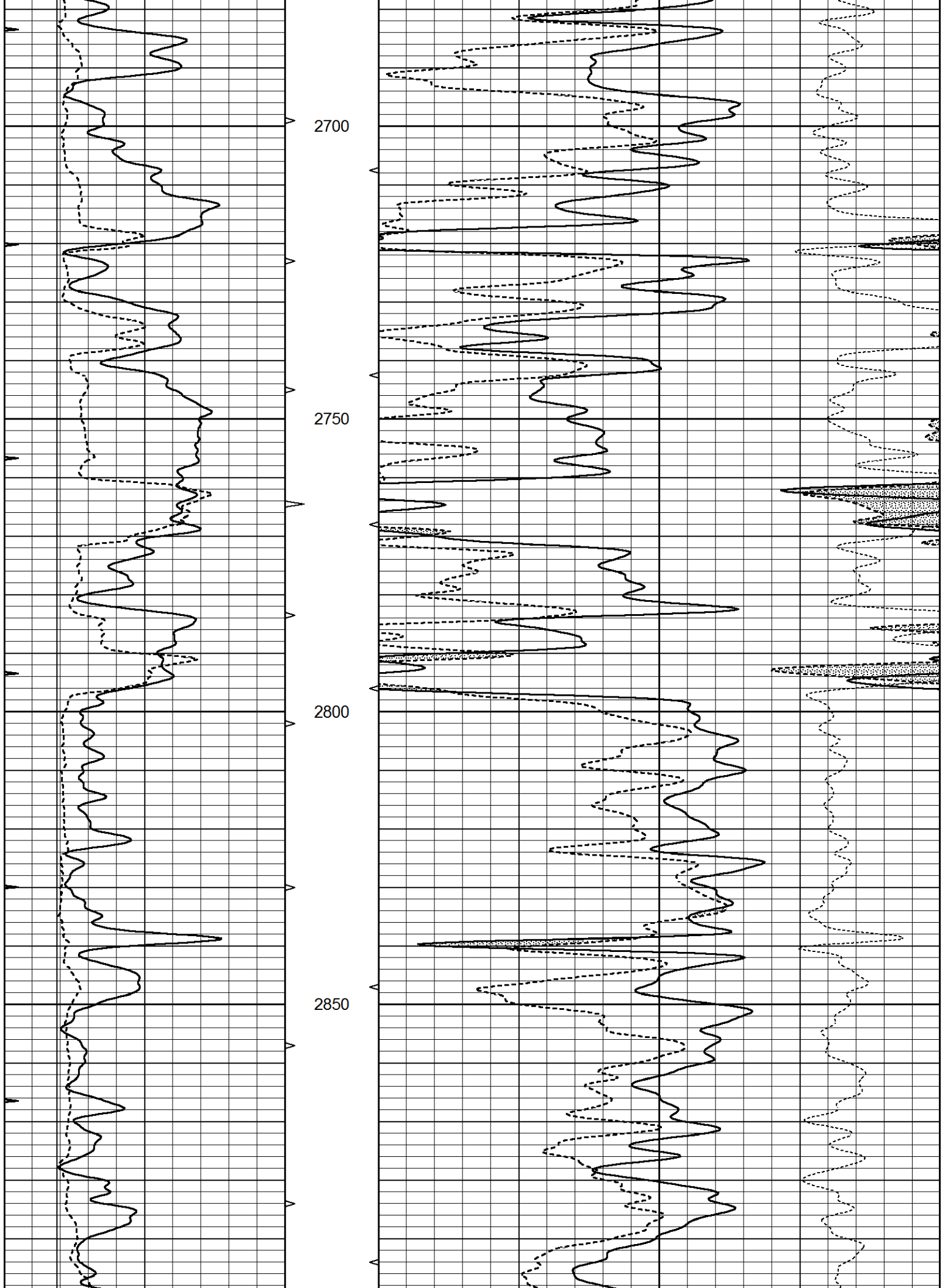


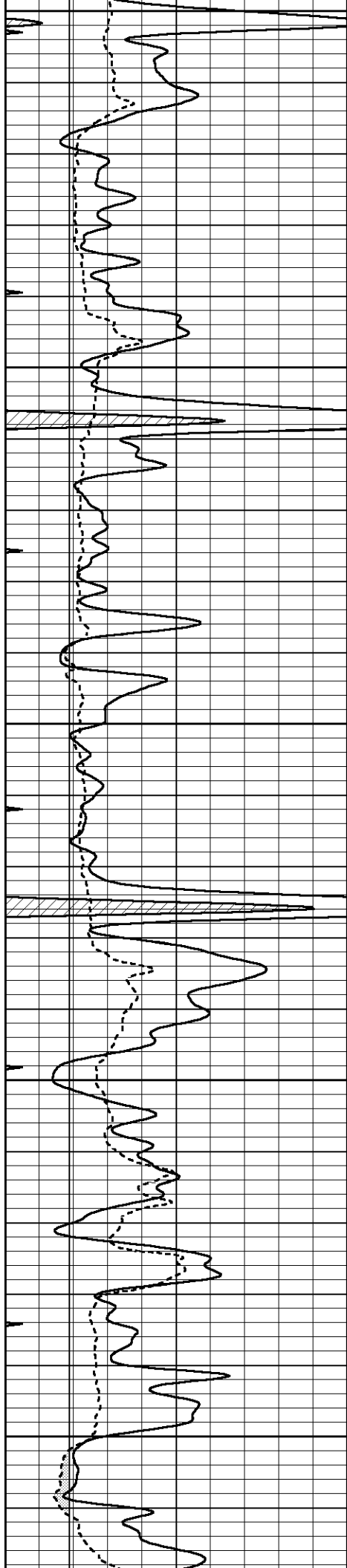
# MAIN SECTION

Database File 5240ddn.db  
 Dataset Pathname pass3.1  
 Presentation Format \_den\_neu  
 Dataset Creation Fri Nov 20 17:29:31 2020  
 Charted by Depth in Feet scaled 1:240

0	GAMMA RAY (GAPI)	150	AVTX	30	COMPENSATED DENSITY (pu)	-10
0	MINMK	20	10 (ft3) 0	30	COMPENSATED NEUTRON (pu)	-10
6	CALIPER (in)	16	BVTX		-0.25 CORRECTION (g/cc)	0.25
			0 (ft3) 10			







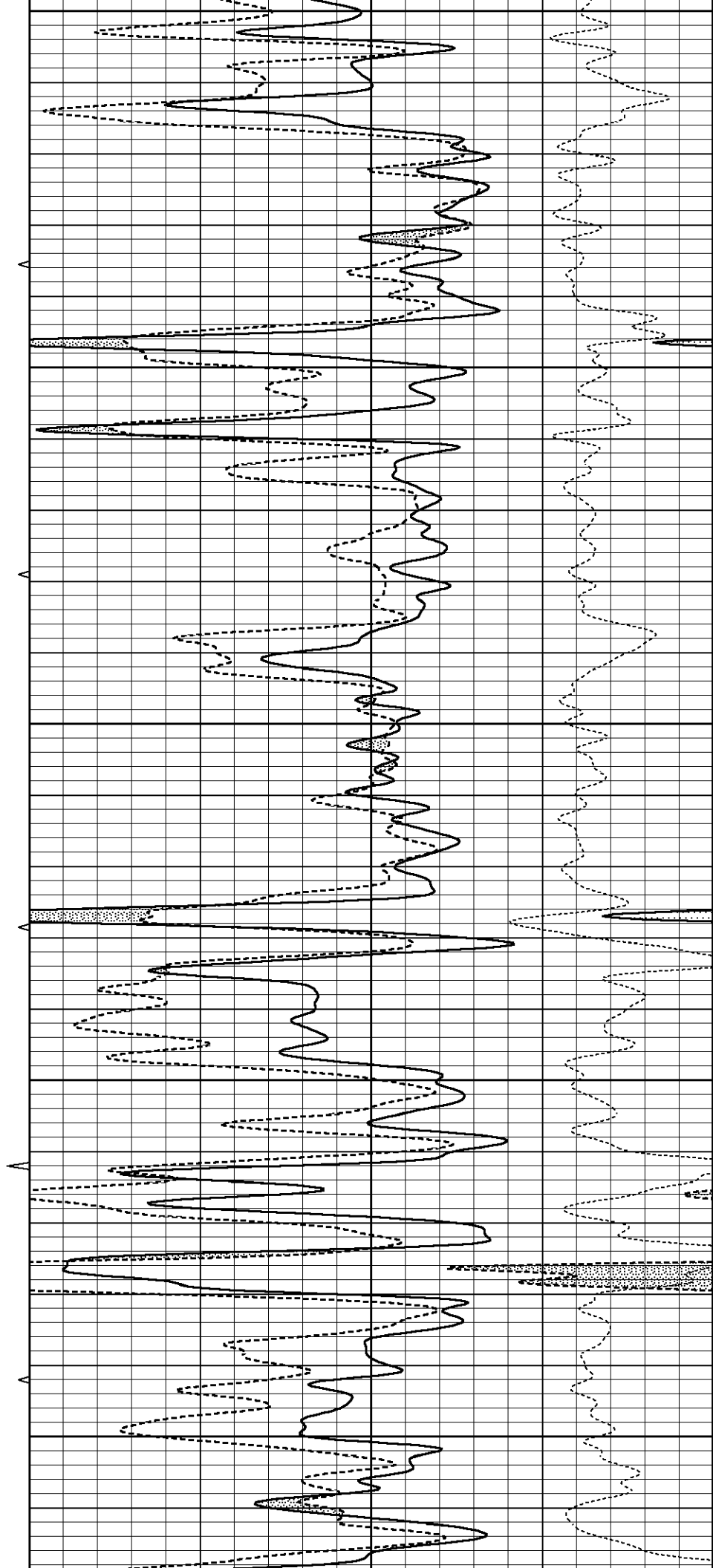
2900

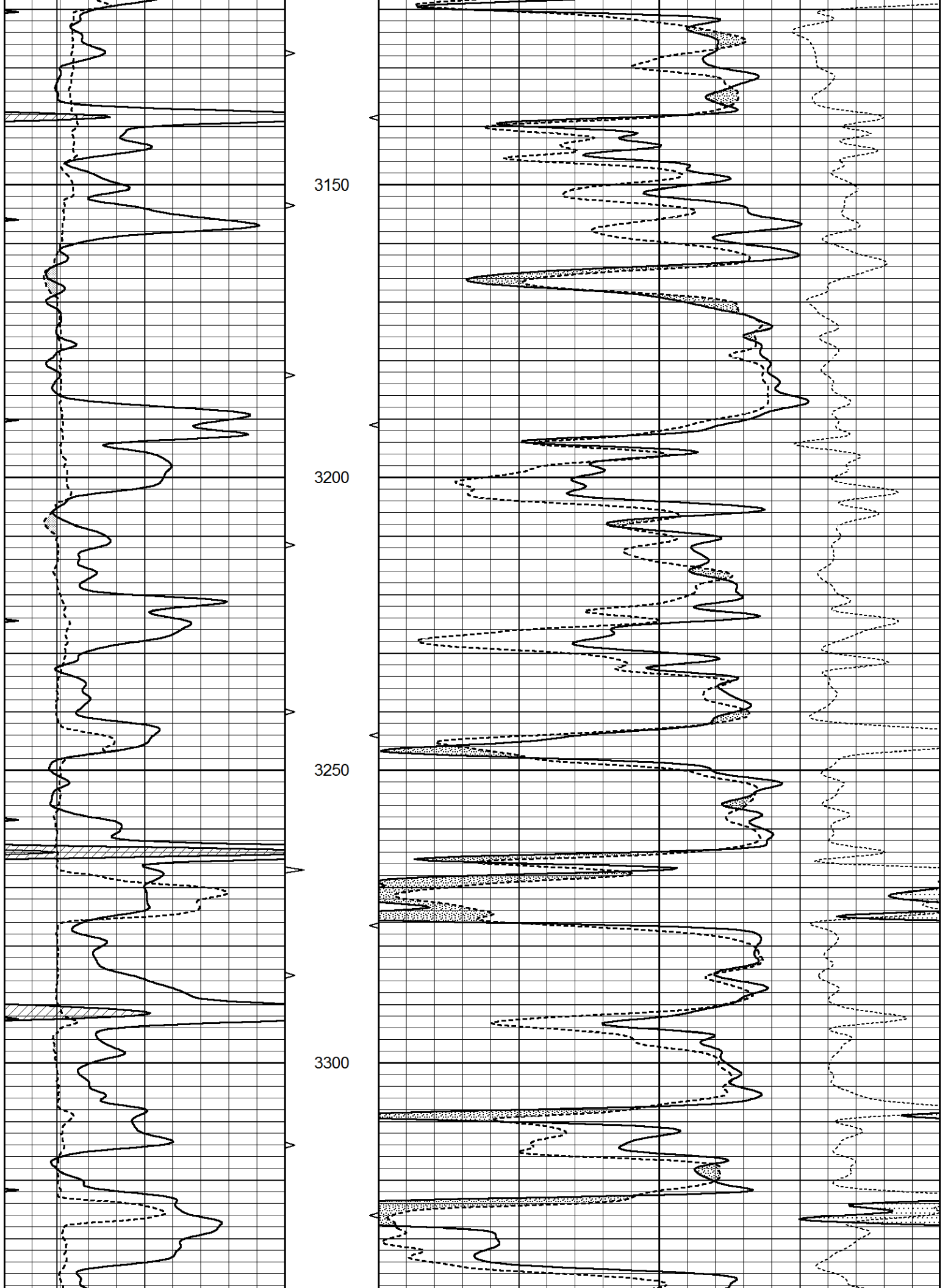
2950

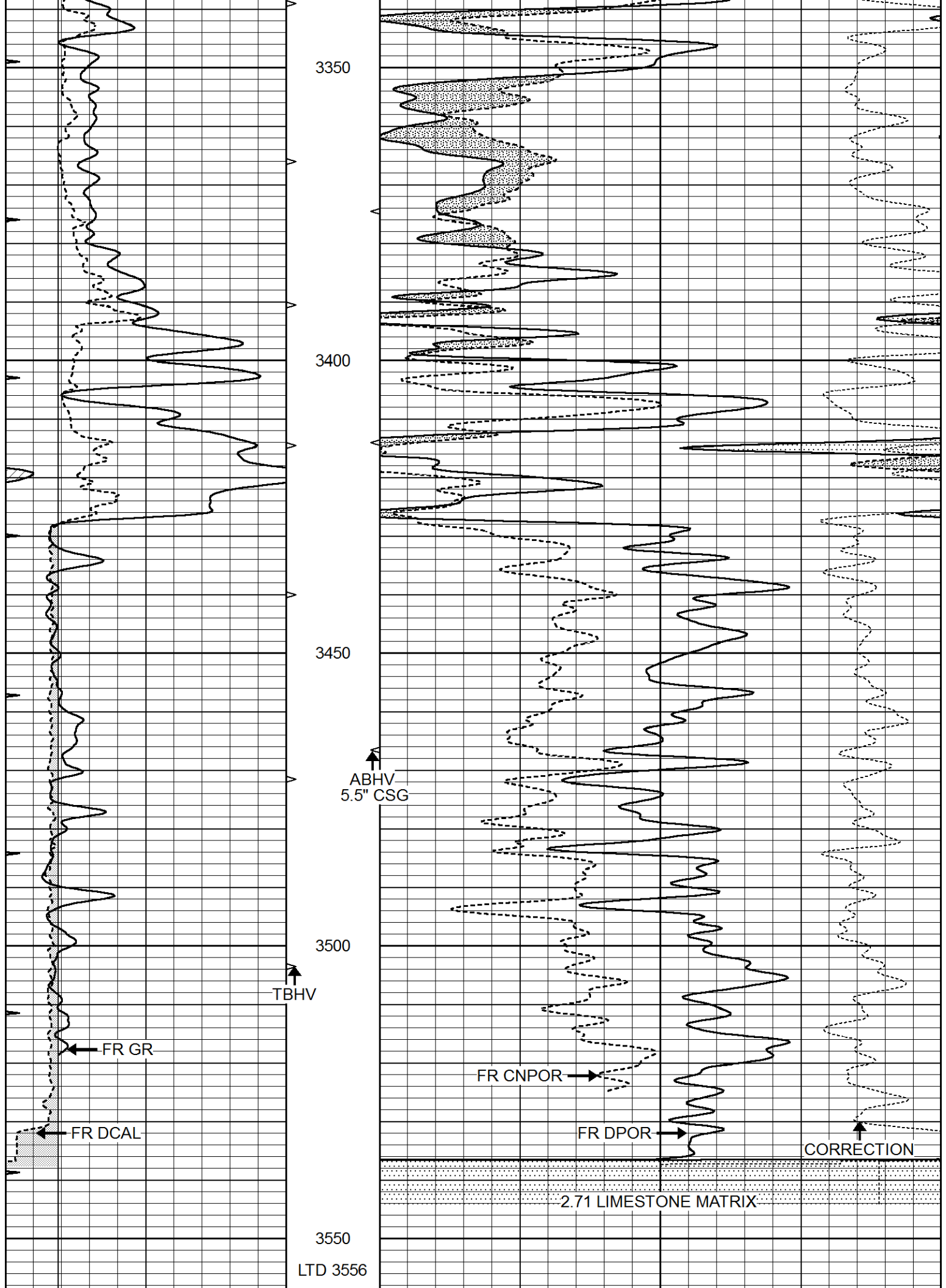
3000

3050

3100







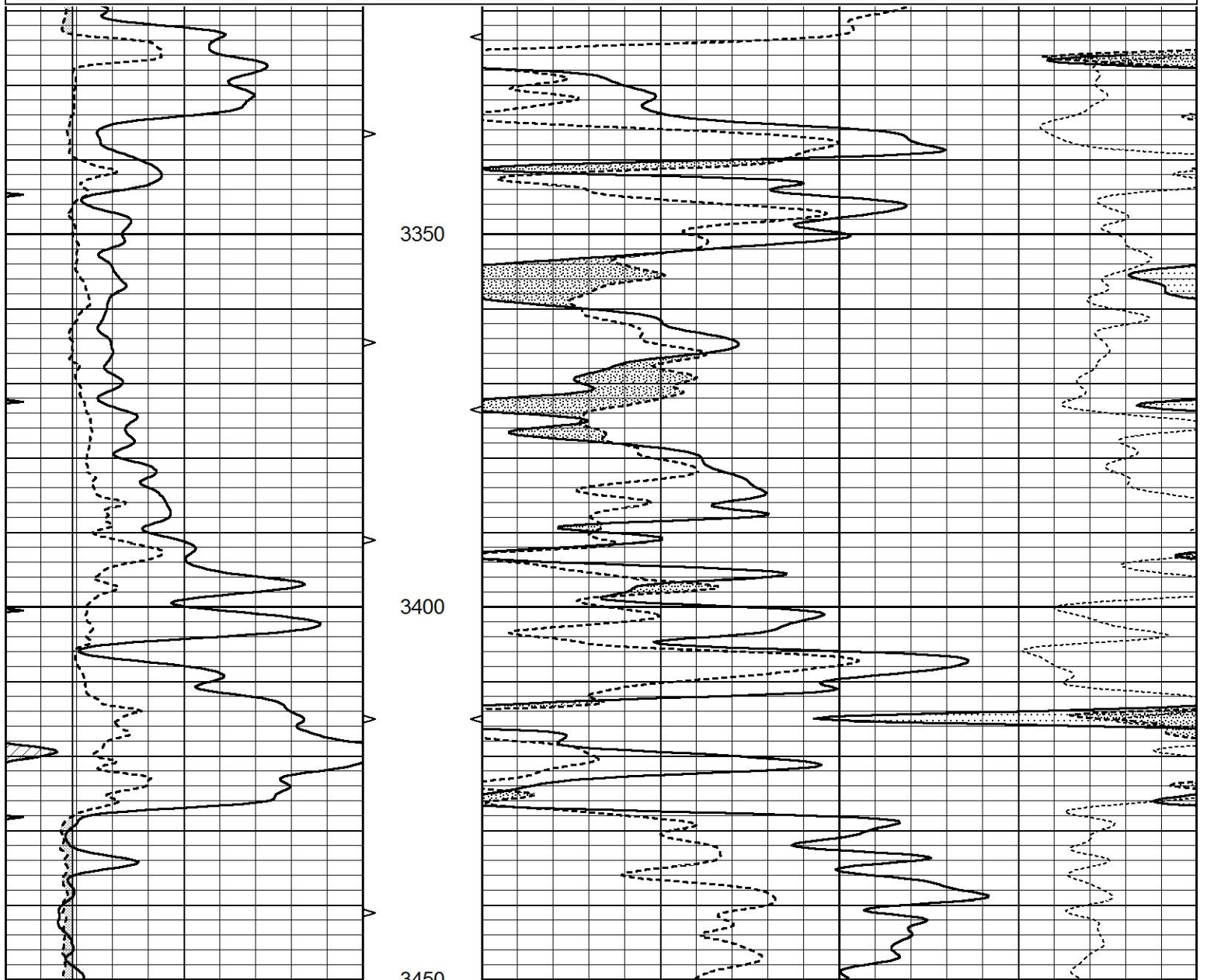
0	GAMMA RAY (GAPI)	150	AVTX	30	COMPENSATED DENSITY (pu)	-10
0	MINMK	20	10 (ft3) 0	30	COMPENSATED NEUTRON (pu)	-10
6	CALIPER (in)	16	BVTX		-0.25 CORRECTION (g/cc)	0.25
			0 (ft3) 10			

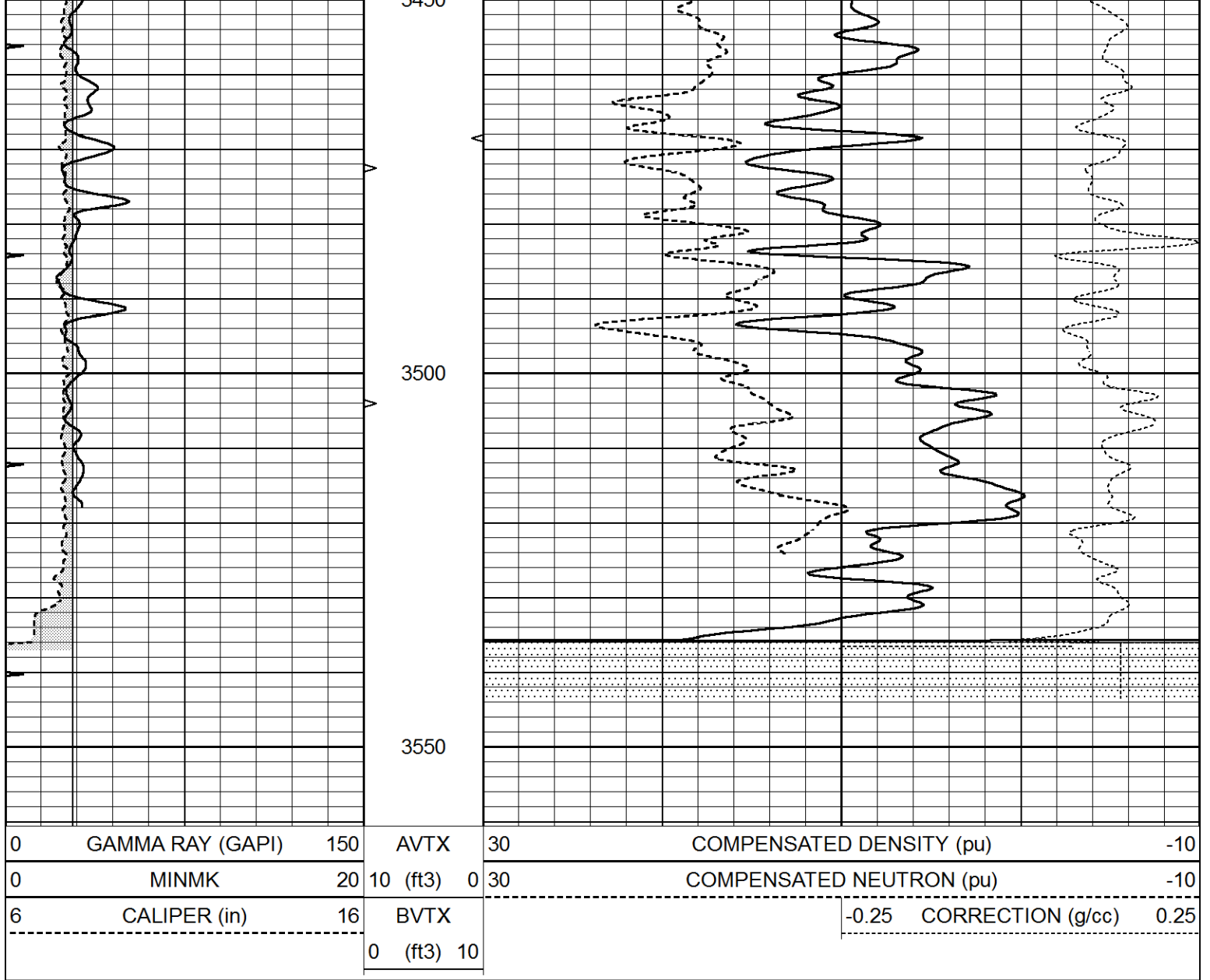


# REPEAT SECTION

Database File 5240ddn.db  
 Dataset Pathname pass2.1  
 Presentation Format \_den\_neu  
 Dataset Creation Fri Nov 20 17:30:55 2020  
 Charted by Depth in Feet scaled 1:240

0	GAMMA RAY (GAPI)	150	AVTX	30	COMPENSATED DENSITY (pu)	-10
0	MINMK	20	10 (ft3) 0	30	COMPENSATED NEUTRON (pu)	-10
6	CALIPER (in)	16	BVTX		-0.25 CORRECTION (g/cc)	0.25
			0 (ft3) 10			





### Calibration Report

Database File 5240ddn.db  
 Dataset Pathname pass2.1  
 Dataset Creation Fri Nov 20 17:30:55 2020

### Dual Induction Calibration Report

Serial-Model: FW1410-55-Probe  
 Surface Cal Performed: Tue Feb 19 11:44:18 2019  
 Downhole Cal Performed: Tue Feb 19 11:44:24 2019  
 After Survey Verification Performed: Tue Feb 19 11:44:27 2019

#### Surface Calibration

Loop:	Readings				References			Results	
	Air	Loop			Air	Loop		m	b
Deep	0.011	0.656	V	1.000	400.000	mmho/m	618.595	-5.524	
Medium	-0.000	0.731	V	1.000	464.000	mmho/m	632.856	1.197	
Internal:	Zero	Cal		Zero	Cal		m	b	
Deep	0.007	0.649	V	0.000	400.000	mmho/m	623.784	-4.595	
Medium	0.004	0.743	V	0.000	464.000	mmho/m	627.284	-2.251	

#### Downhole Calibration

## Downhole Calibration

## Readings

## References

## Results

	Readings			References			Results	
	Zero	Cal		Zero	Cal		m'	b'
Deep	-0.824	395.917	mmho/m	-0.976	397.550	mmho/m	1.004	-0.149
Medium	3.565	471.327	mmho/m	3.468	471.590	mmho/m	1.001	-0.099
LL3		7.503	V		1500.000	Ohm-m		
		0.001	V		20.000	Ohm-m		
		-7.481	V		3745.000	mmho-m		

## After Survey Verification

## Readings

## Targets

## Results

	Readings			Targets			Results	
	Zero	Cal		Zero	Cal		m'	b'
Deep	0.000	0.000	mmho/m	-0.824	395.917	mmho/m	1.000	0.000
Medium	0.000	0.000	mmho/m	3.565	471.327	mmho/m	1.000	0.000
LL3		0.000	Ohm-m		1500.000	Ohm-m		
		0.000	Ohm-m		20.000	Ohm-m		
		0.000	mmho-m		3745.000	mmho-m		

## Litho Density Calibration Report

Serial: 140703

Model: V4\_10P

Source Number: 74GBq-19

## Master Calibration

Performed: Fri Oct 30 10:28:51 2020

	Background	Aluminum	Magnesium		
Window 1	542.44	5567.78	24103.74	cps	
Window 2	44.66	1254.11	5862.88	cps	
Window 4	233.89	1249.47	5395.29	cps	
Window 5	561.63	8508.97	16290.56	cps	
Window 6	44.30	1445.42	2841.86	cps	
Window 8	267.45	2710.48	5092.88	cps	
Bulk Density	-	2.6020	1.6830	g/cc	
Pe	-	3.0000	2.5070	b/e	
LS Alpha:	: -1.8545	SS Alpha:	: -0.7763	LS CPE:	: 1.1359
LS Beta:	: 130052.2542	SS Beta:	: 19130.5414	SS CPE:	: 1.4655

## Before Survey Background Counts Verification

Performed: Wed Dec 31 18:00:00 1969

Window 1	0.00	cps
Window 2	0.00	cps
Window 4	0.00	cps
Window 5	0.00	cps
Window 6	0.00	cps
Window 8	0.00	cps

## After Survey Background Counts Verification

Performed: Wed Dec 31 18:00:00 1969

Window 1	0.00	cps
Window 2	0.00	cps
Window 4	0.00	cps
Window 5	0.00	cps
Window 6	0.00	cps
Window 8	0.00	cps

## Lithodensity Caliper Calibration

Performed: Fri Oct 30 10:28:51 2020

Results	Readings	References (in)		Gain	Offset
Low	High	Low	High		
4306.9	7563.2	8.0	14.0	0.0	0.1

Before Survey Caliper Verification		Performed:			
	Reference	Reading			
Caliper (in)	_____	_____			

After Survey Caliper Verification		Performed:			
	Reference	Reading			
Caliper (in)	_____	_____			

Compensated Neutron Calibration Report

Serial Number:	080621PMC
Tool Model:	NABORS

PRE-SURVEY VERIFICATION				
Detector	Readings	Measured	Target	
Short Space	cps			
Long Space	cps	pu	pu	

POST-SURVEY VERIFICATION				
Detector	Readings	Measured	Target	
Short Space	cps			
Long Space	cps	pu	pu	

Gamma Ray Calibration Report

Serial Number:	7	
Tool Model:	Probe1	
Performed:	Tue Dec 10 10:02:55 2019	
Calibrator Value:	1.0	GAPI
Background Reading:	0.0	cps
Calibrator Reading:	1.0	cps
Sensitivity:	0.4800	GAPI/cps