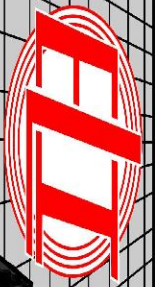


MICRO LOG



Company ANCHOR BAY PETROLEUM, LLC.

Well SIMPSON #1

Field

County ELLIS

State KANSAS

Location: API #: 15-051-26992-0000

710' FSL & 335' FEL

Other Services
CDL/CNL
DIL

SEC 3 TWP 11S RGE 17W

Elevation

Permanent Datum GROUND LEVEL Elevation 1862
Log Measured From KELLY BUSHING 5' A.G.L.
Drilling Measured From KELLY BUSHING

K.B. 1867
D.F. 1865
G.L. 1862

Date	11/20/20
Run Number	TWO
Depth Driller	3555
Depth Logger	3556
Bottom Logged Interval	3554
Top Log Interval	2500
Casing Driller	8 5/8" @ 213
Casing Logger	213
Bit Size	7 7/8
Type Fluid in Hole	CHEMICAL MUD
Density / Viscosity	9.4/57
pH / Fluid Loss	9.0/11.2
Source of Sample	FLOWLINE
Rm @ Meas. Temp	.50 @ 62F
Rmf @ Meas. Temp	.37 @ 62F
Rmc @ Meas. Temp	.60 @ 62F
Source of Rmf / Rmc	MEASUREMENT
Rm @ BHT	.27 @ 112F
Time Circulation Stopped	2 HOURS
Time Logger on Bottom	////
Maximum Recorded Temperature	112F
Equipment Number	3802
Location	HAYS, KANSAS
Recorded By	JASON CAPPELLUCCI
Witnessed By	ED GLASSMAN

<<< Fold Here >>>

All interpretations are opinions based on inferences from electrical or other measurements and we cannot and do not guarantee the accuracy or correctness of any interpretation, and we shall not, except in the case of gross or willful negligence on our part, be liable or responsible for any loss, costs, damages, or expenses incurred or sustained by anyone resulting from any interpretation made by any of our officers, agents or employees. These interpretations are also subject to our general terms and conditions set out in our current Price Schedule.

Comments

THANK YOU FOR USING ELI WIRELINE SERVICES, HAYS, KS. (785) 628-6395
DIRECTIONS

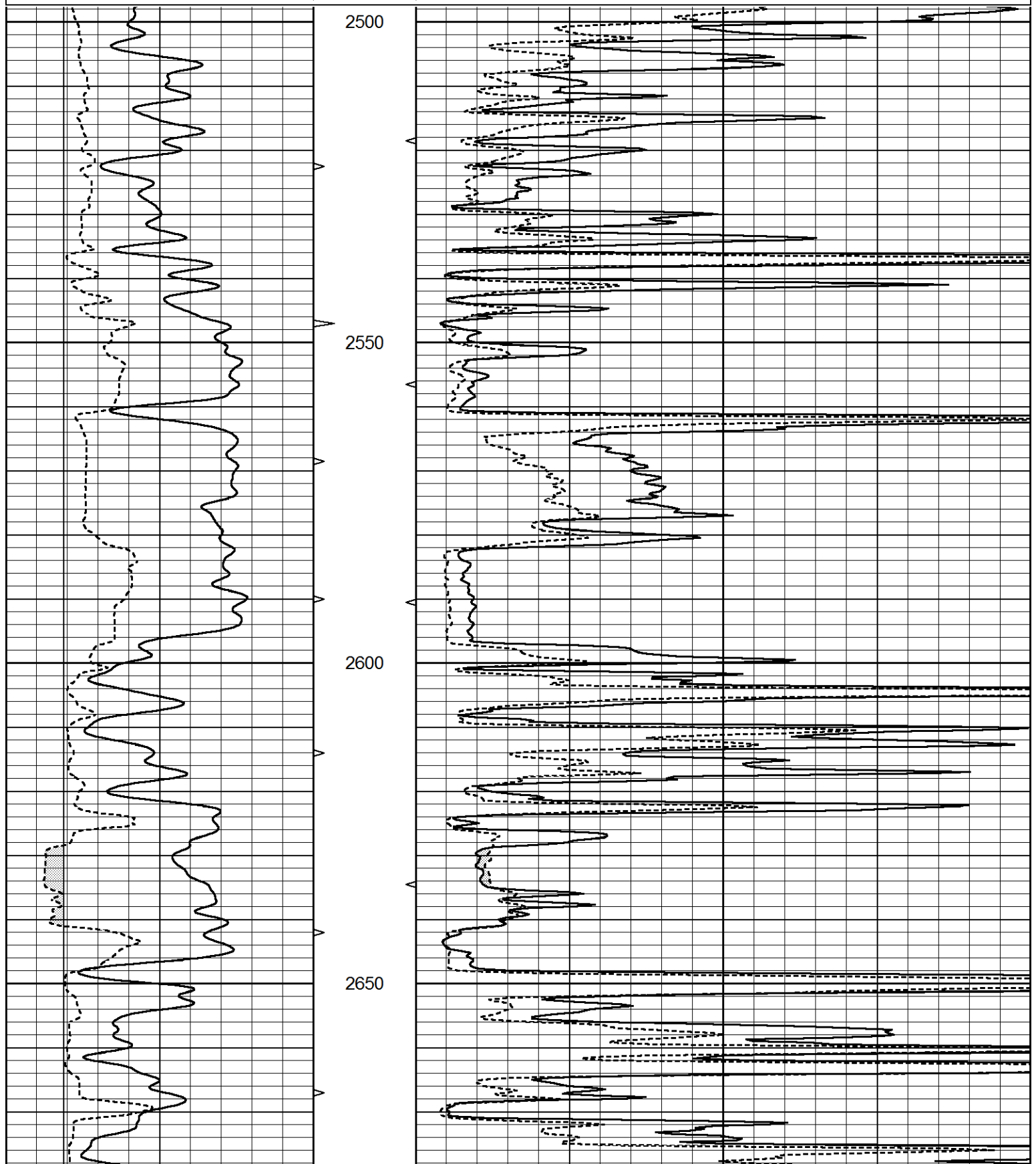
HAYS, KS. - NORTH TO SALINE RIVER RD. - EAST TO CODELL RD. - 1 NORTH - NORTHWEST INTO

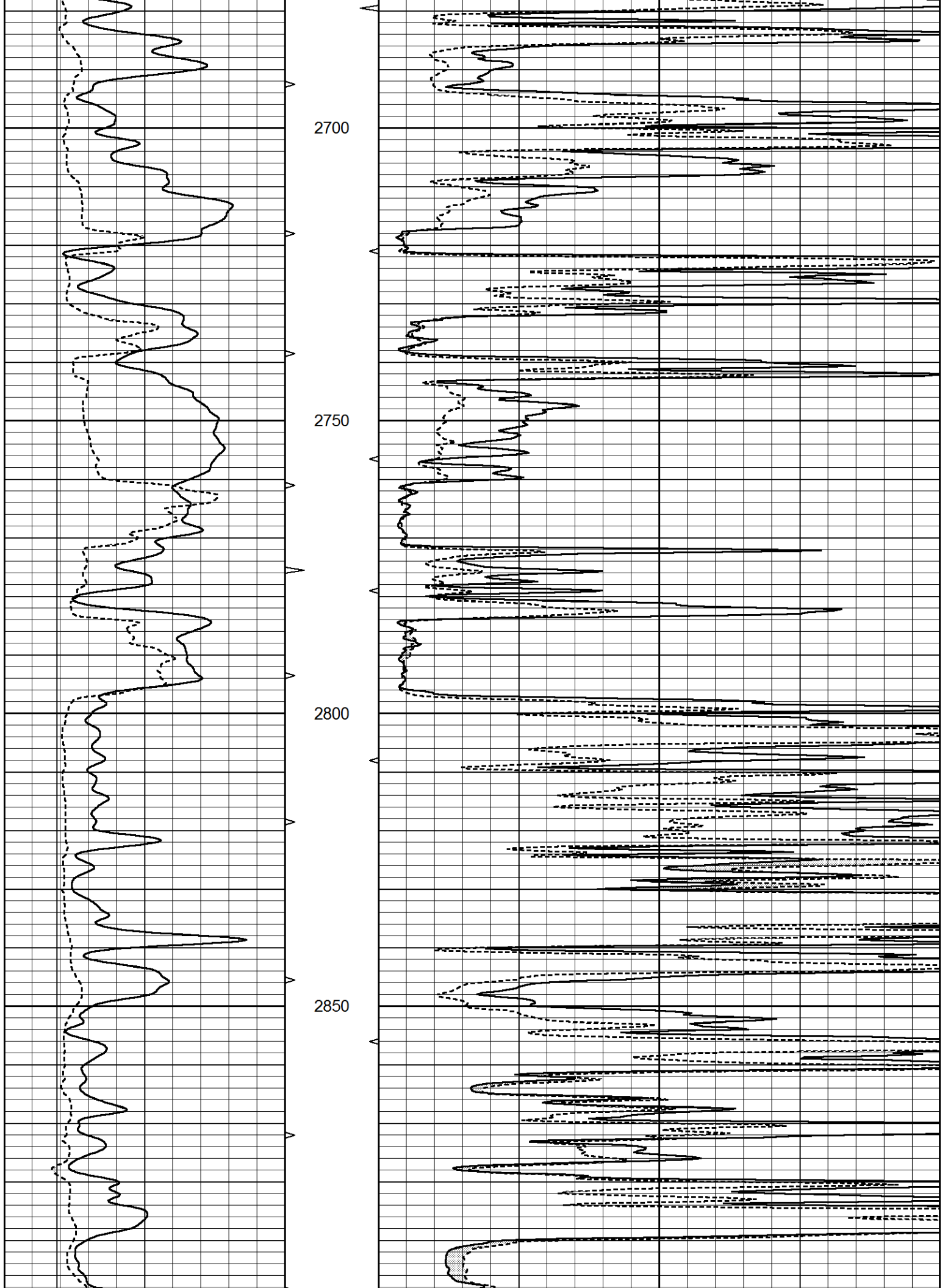


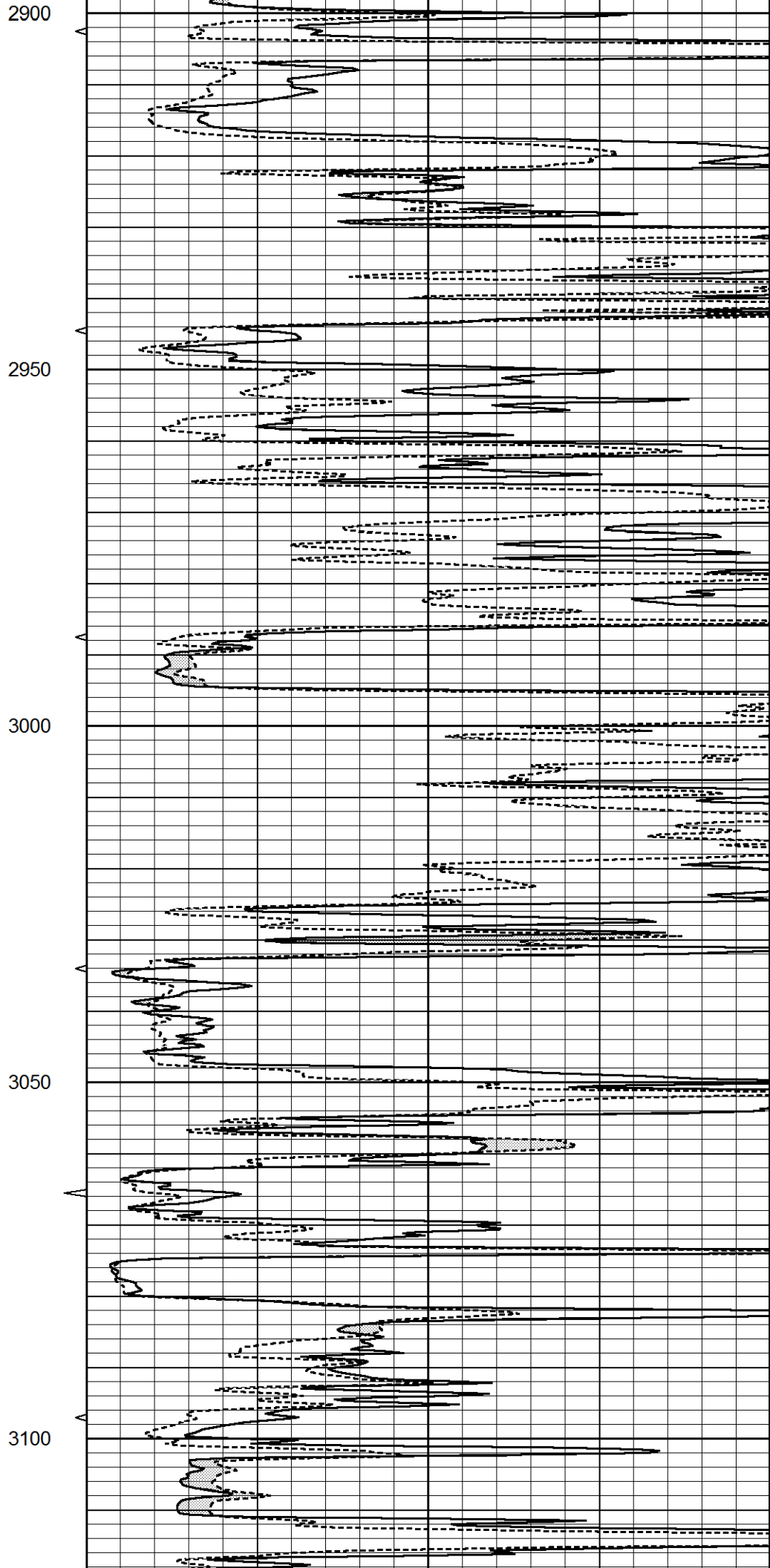
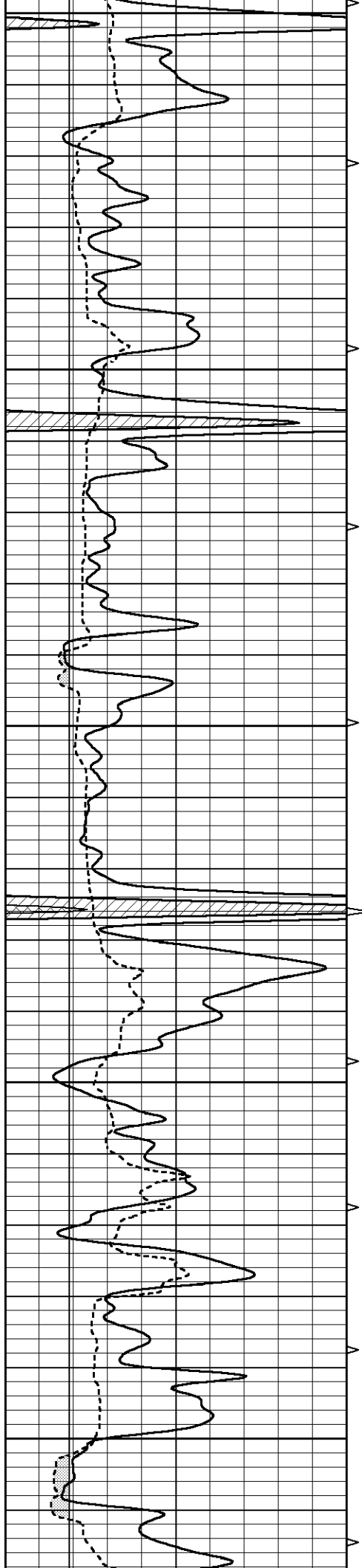
MAIN SECTION

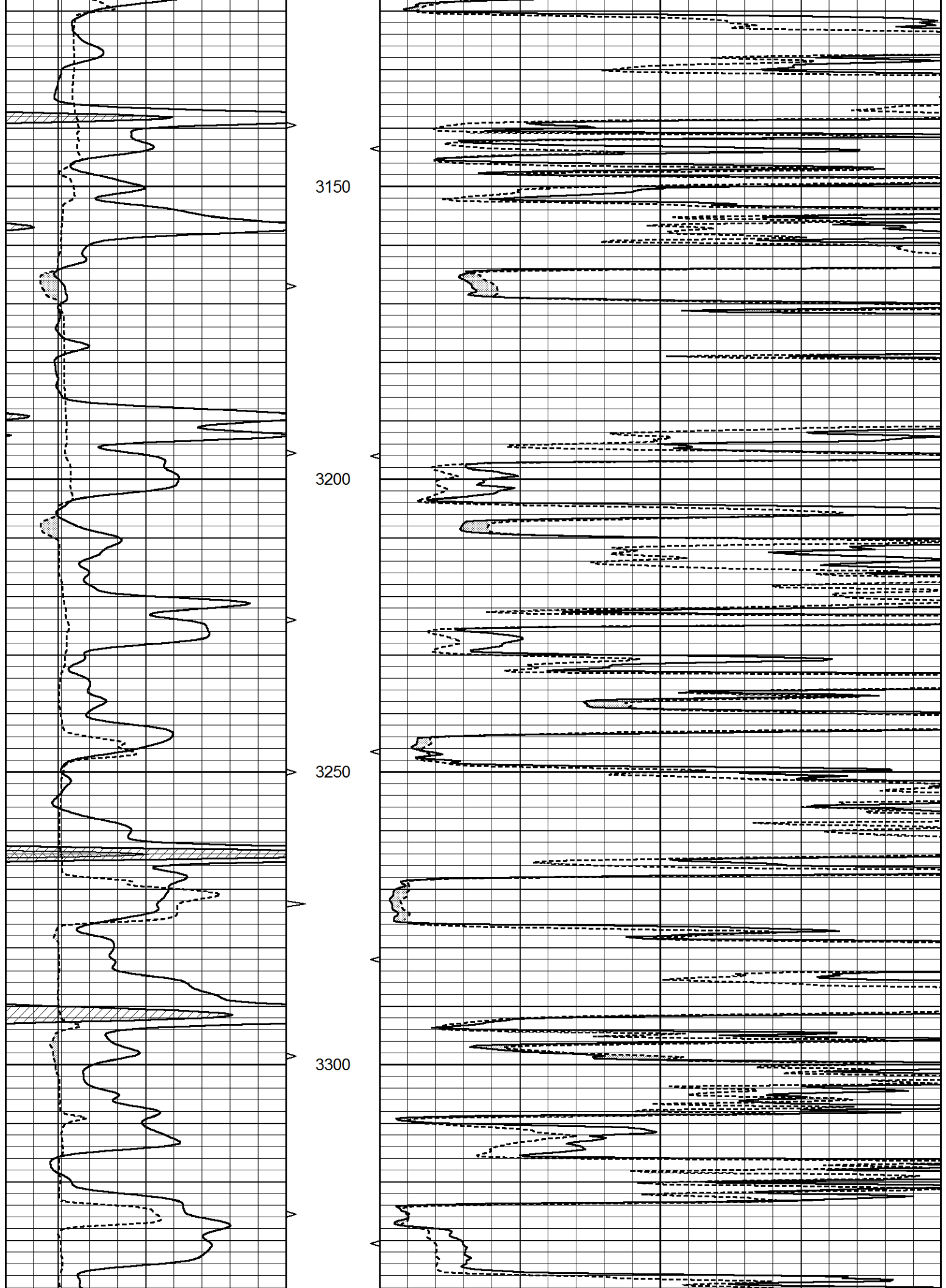
Database File 5240ddn.db
 Dataset Pathname pass6.1
 Presentation Format _micro
 Dataset Creation Fri Nov 20 19:16:10 2020
 Charted by Depth in Feet scaled 1:240

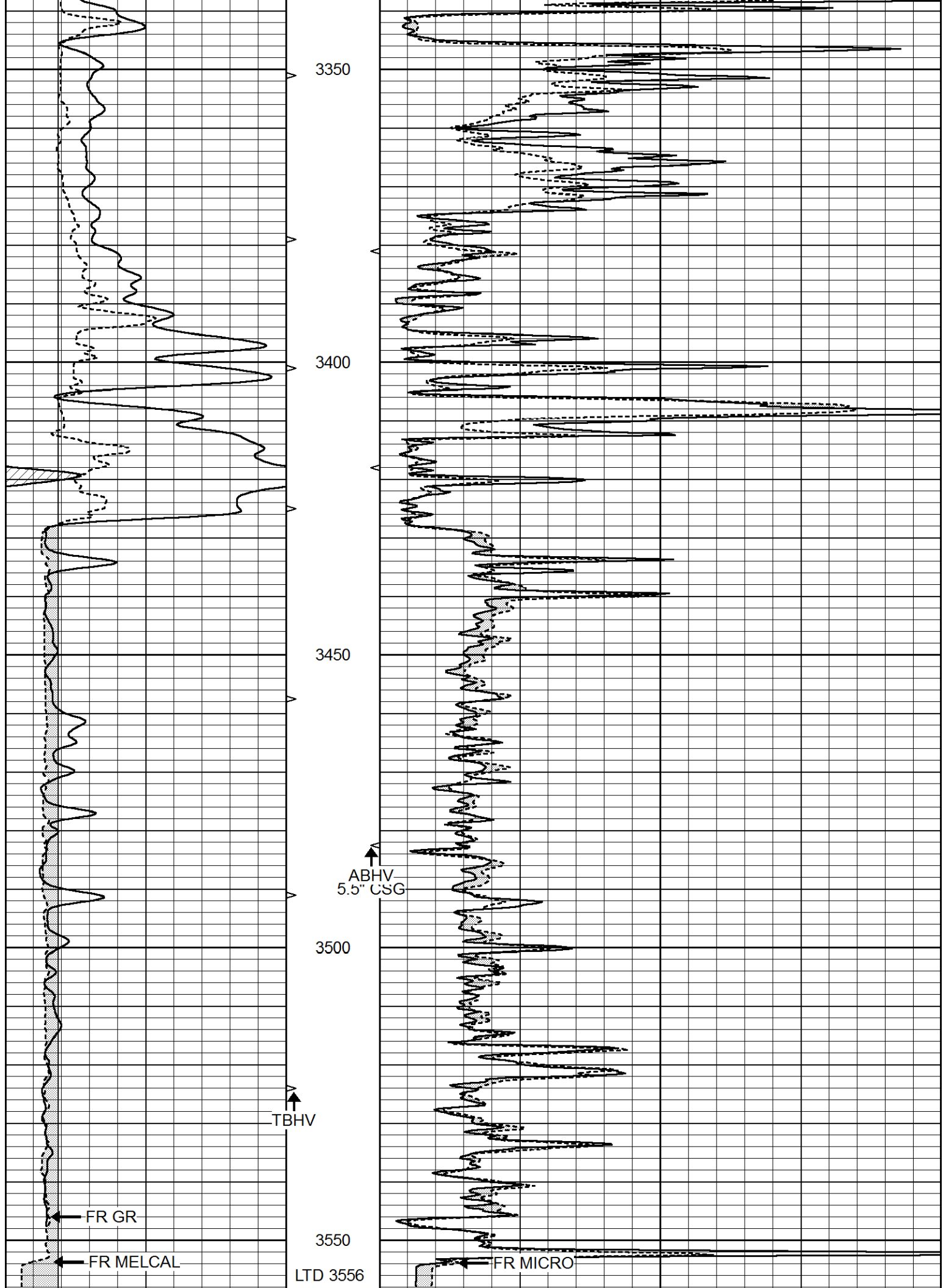
0	GAMMA RAY (GAPI)	150	ABHV	0	MEL1.5 (Ohm-m)	40
6	CALIPER (in)	16	10 (ft3)	0	MEL2.0 (Ohm-m)	40
			TBHV			
			0 (ft3)	10		











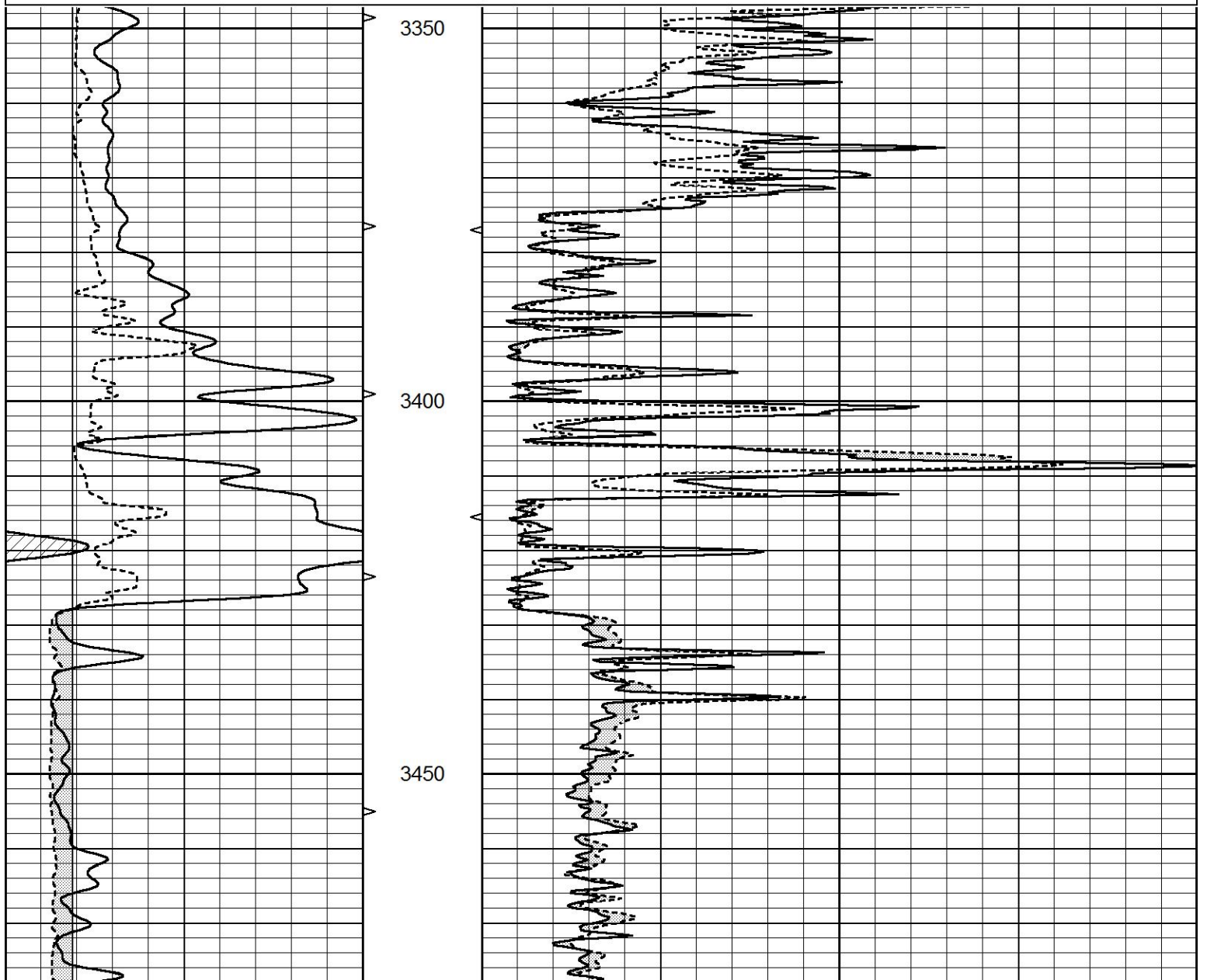
0	GAMMA RAY (GAPI)	150	ABHV	0	MEL1.5 (Ohm-m)	40
6	CALIPER (in)	16	10 (ft3) 0	0	MEL2.0 (Ohm-m)	40
			TBHV			
			0 (ft3) 10			

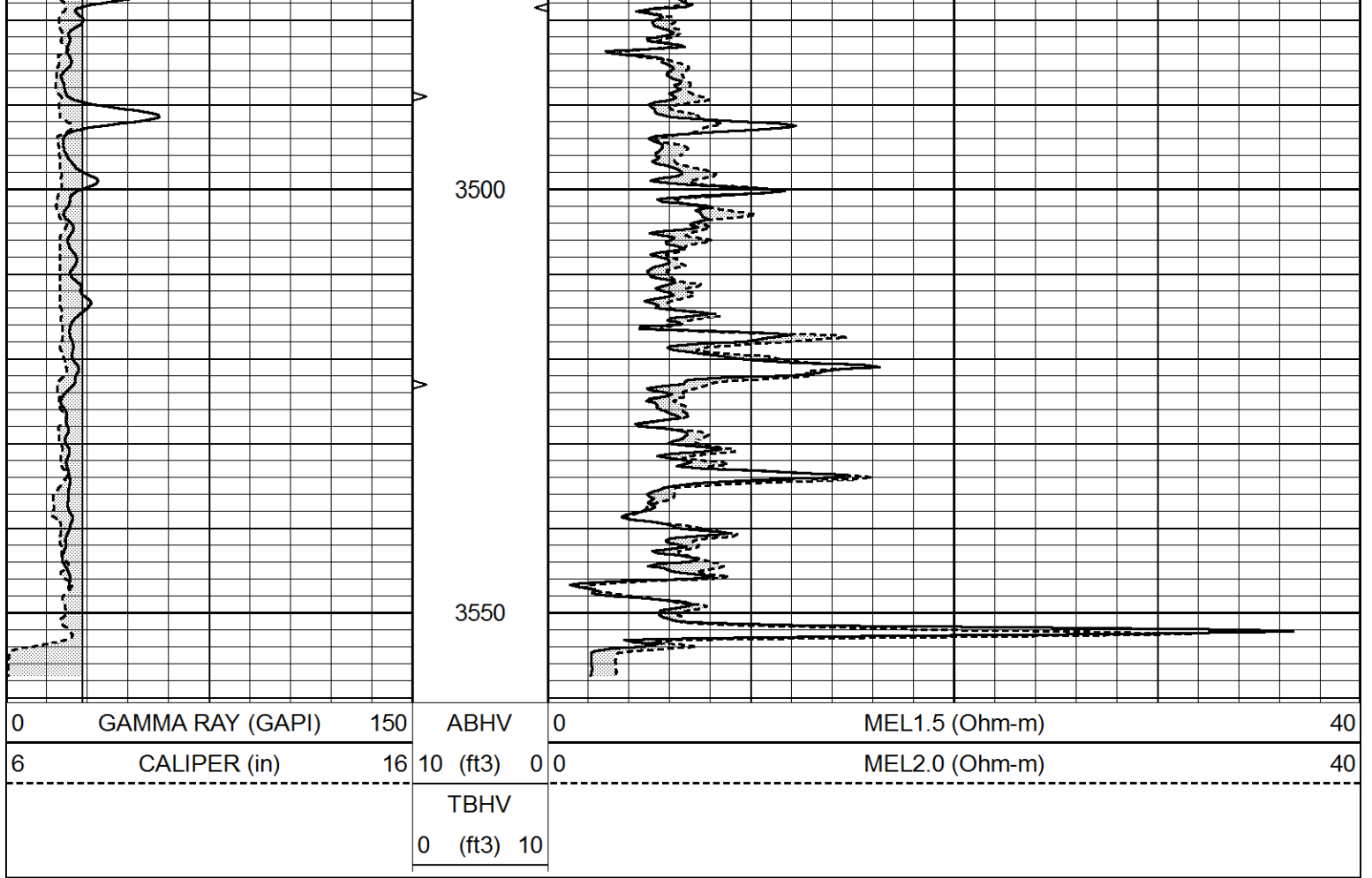


REPEAT SECTION

Database File 5240ddn.db
 Dataset Pathname pass5.1
 Presentation Format _micro
 Dataset Creation Fri Nov 20 18:57:36 2020
 Charted by Depth in Feet scaled 1:240

0	GAMMA RAY (GAPI)	150	ABHV	0	MEL1.5 (Ohm-m)	40
6	CALIPER (in)	16	10 (ft3) 0	0	MEL2.0 (Ohm-m)	40
			TBHV			
			0 (ft3) 10			





Calibration Report

Database File 5240ddn.db
 Dataset Pathname pass5.1
 Dataset Creation Fri Nov 20 18:57:36 2020

MICRO_USR Calibration Report

Serial Number: 070910
 Tool Model: ProbeL
 Performed: Sat Nov 07 20:28:24 2020

Caliper Calibration: Gain=7.282 Offset=2.657
 References Low Cal High Cal
 8.000 14.000
 Readings 0.647 1.471

1.5" Calibration: Gain=50.000 Offset=-0.567
 References Low Cal High Cal
 0.000 20.000
 Readings 0.004 1.335

2" Calibration: Gain=45.000 Offset=0.000
 References Low Cal High Cal
 0.000 20.000
 Readings 0.004 1.029

Microlog Calibration Report

Serial-Model: 070910-ProbeL
 Performed: (Not Performed)

	Readings			References			Results	
	Zero	Cal		Zero	Cal		m	b
Normal	0.0000	1.0000	V	0.0000	1.0000	Ohm-m	1.0000	0.0000
Inverse	0.0000	1.0000	V	0.0000	1.0000	Ohm-m	1.0000	0.0000
Caliper	0.0000	1.0000	V	0.0000	1.0000	in	1.0000	0.0000

Gamma Ray Calibration Report

Serial Number:	070558
Tool Model:	Probe1
Performed:	Fri Oct 30 21:32:56 2020
Calibrator Value:	1.0 GAPI
Background Reading:	0.0 cps
Calibrator Reading:	1.0 cps
Sensitivity:	0.2700 GAPI/cps