



**BOREHOLE
COMPENSATED SONIC
LOG**

Company	Berexco, LLC	Company	Berexco, LLC
Well	Lebow #11	Well	Lebow #11
Field	Fairport	Field	Fairport
County	Russell	County	Russell
State	KS	State	KS
Location:	API #: 15 167 24085	Location:	660' FNL & 660' FWL C-NW-NW
Permanent Datum	Ground Level	Elevation	1953'
Log Measured From	KB 7' AGL	Elevation	K.B. 1960' D.F. 1959' G.L. 1953'
Drilling Measured From	KB	Other Services	ML CDNL DIL
SEC 9	TWP 11S	RGE 15W	

Date	12-6-18
Run Number	Two
Depth Driller	3675'
Depth Logger	3674'
Bottom Logged Interval	3665'
Top Log Interval	400'
Casing Driller	8 5/8" @ 296'
Casing Logger	296'
Bit Size	7 7/8"
Type Fluid in Hole	Chemical Mud
Density / Viscosity	9.3/57
PH / Fluid Loss	9.0/8.8
Source of Sample	Pit
Rm @ Meas. Temp	2.1@66degf
Rmf @ Meas. Temp	1.58@66degf
Rmc @ Meas. Temp	2.52@66degf
Source of Rmf / Rmc	Calculated
Rm @ BHT	1.4@99degf
Time Circulation Stopped	5:00 a.m
Time Logger on Bottom	11:00 a.m
Maximum Recorded Temperature	99degf
Equipment Number	T-127
Location	Hays, KS.
Recorded By	C.Patterson
Witnessed By	Mr. Jerry Smith

<<< Fold Here >>>

All interpretations are opinions based on inferences from electrical or other measurements and we cannot and do not guarantee the accuracy or correctness of any interpretation, and we shall not, except in the case of gross or willful negligence on our part, be liable or responsible for any loss, costs, damages, or expenses incurred or sustained by anyone resulting from any interpretation made by any of our officers, agents or employees. These interpretations are also subject to our general terms and conditions set out in our current Price Schedule.

Comments

Paradise,KS Hwy 18 Turn south on 2nd St then immediately West on Waldo St for 1/10 mi.
Slight South on Main St then Back West(turn by house) on Waldo Rd. for .7 mi (comes to Y)
Left Heading West to South on waldo St for 2.9 mi., Slightly West onto Luray St for 1.7 mi. to 177th St
North on 177th St. 0.6 mi.,East Through Cattle Guard then East to North down Existing Lease Rd
into Location
into Location

Thank you for using Gemini Wireline
785-625-1182

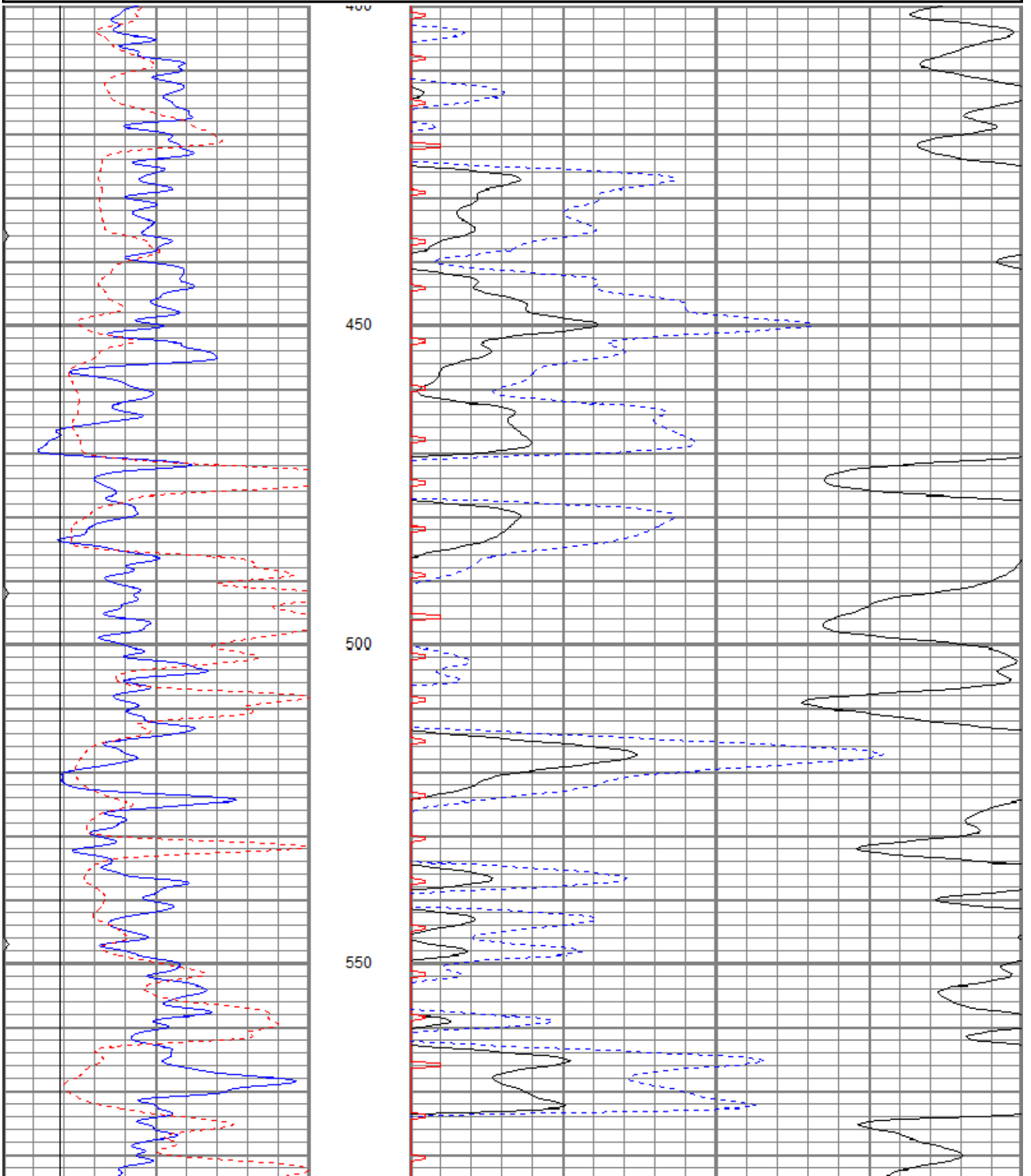


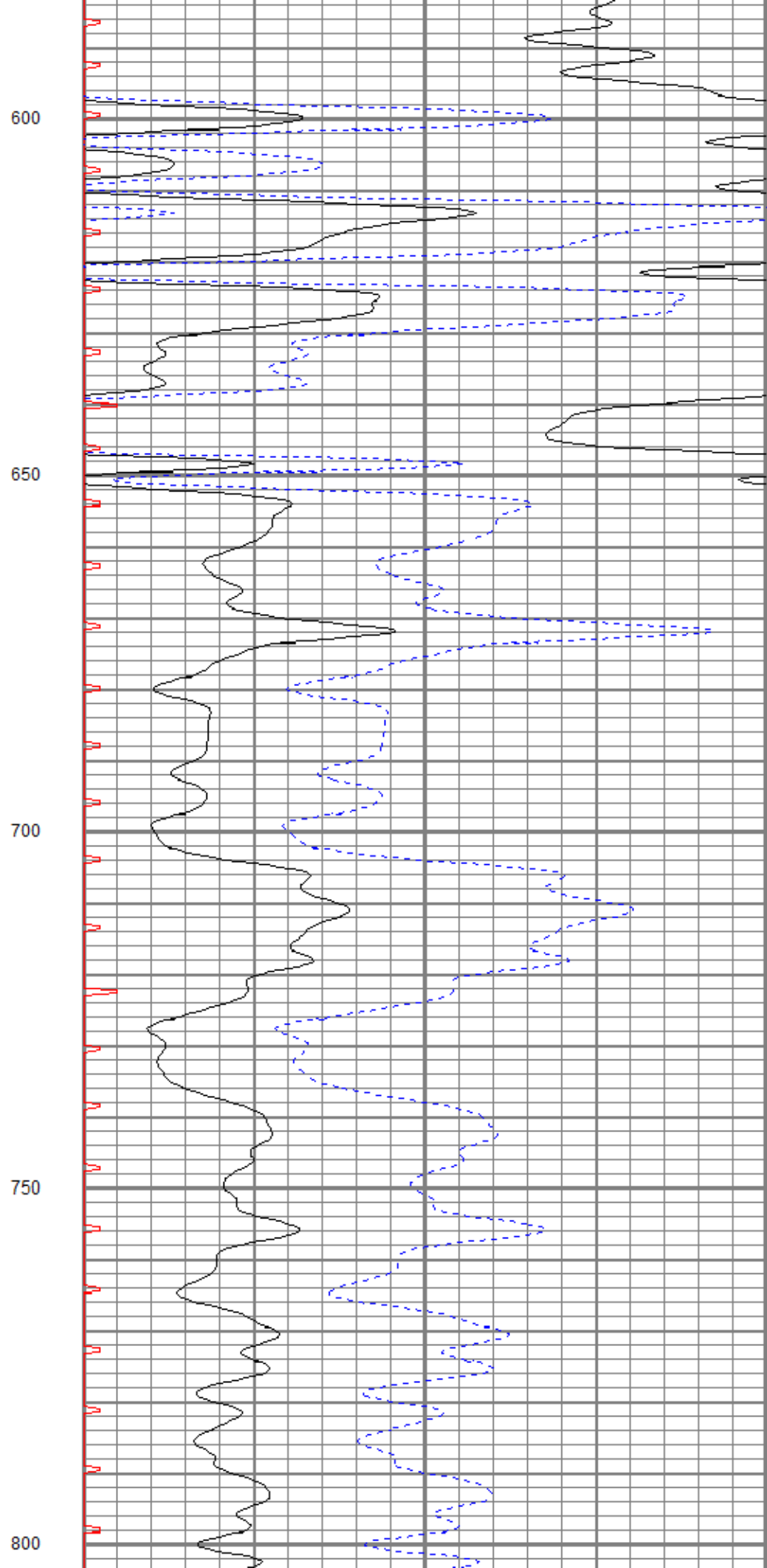
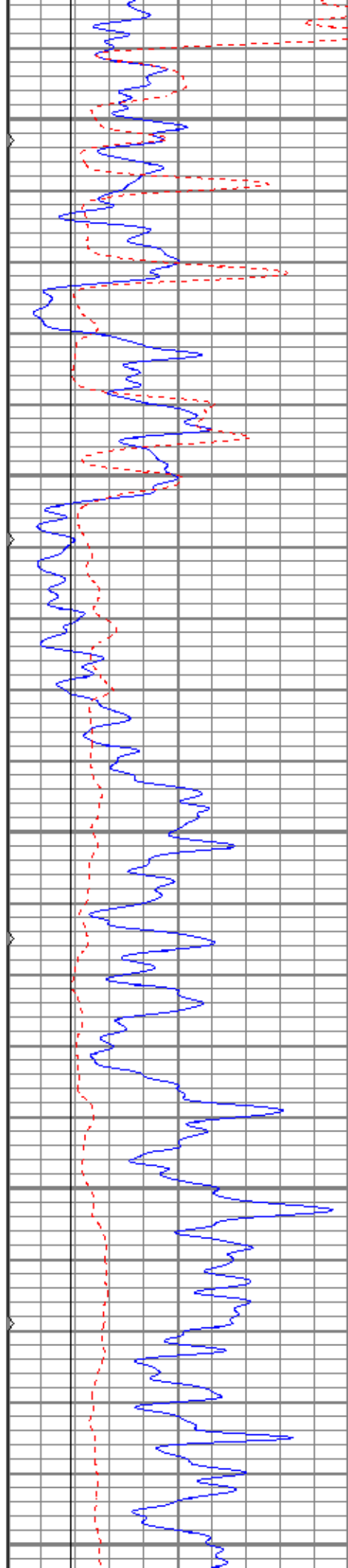
MAIN PASS

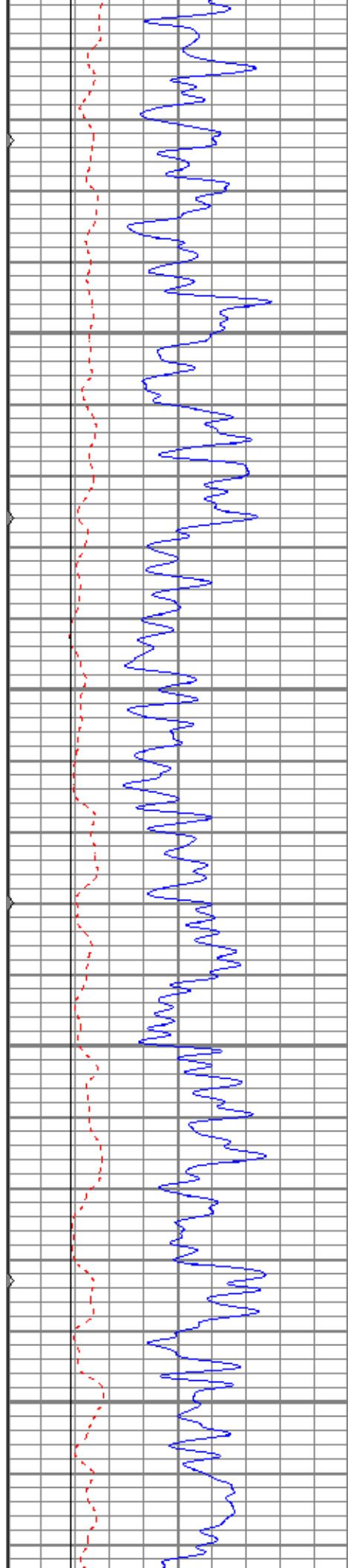
Database File brexlebow#11oh.db
 Dataset Pathname pass7
 Presentation Format kbc
 Dataset Creation Thu Dec 06 11:17:36 2018
 Charted by Depth in Feet scaled 1:240

0	GR (GAPI)	150
6	MCAL (in)	16
6	BOREID (in)	16
0	MINMK	50

140	DT (usec/ft)	40
30	SPOR (pu)	-10
0	ITT (msec)	20





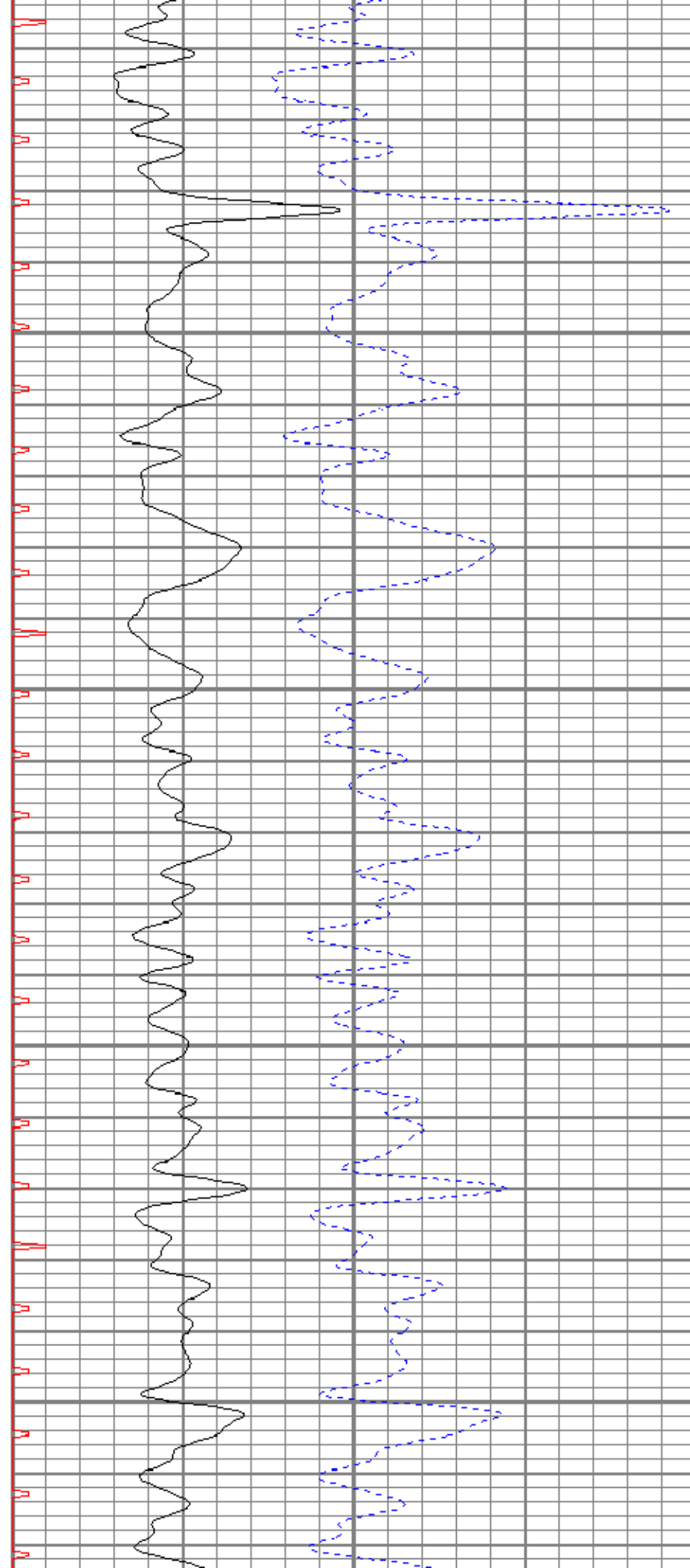


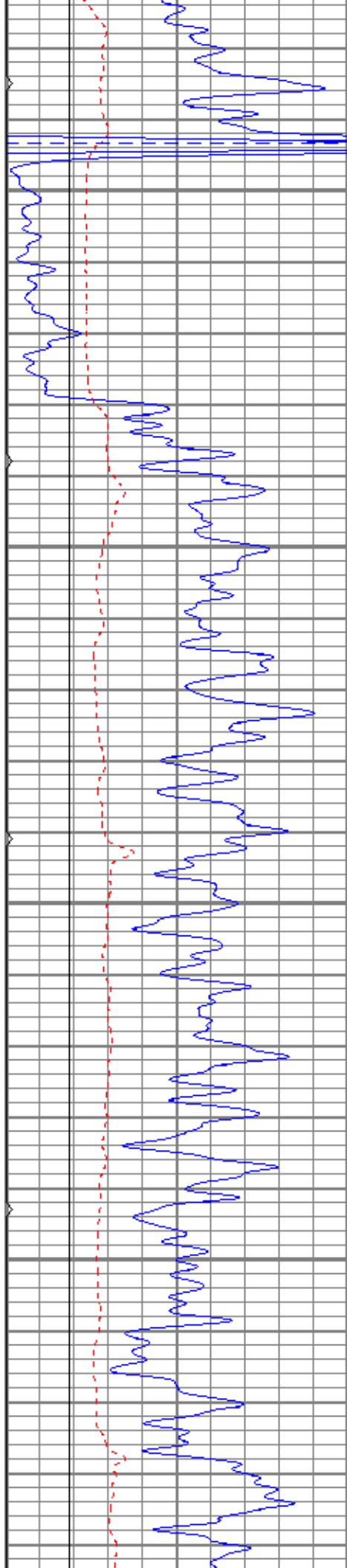
850

900

950

1000



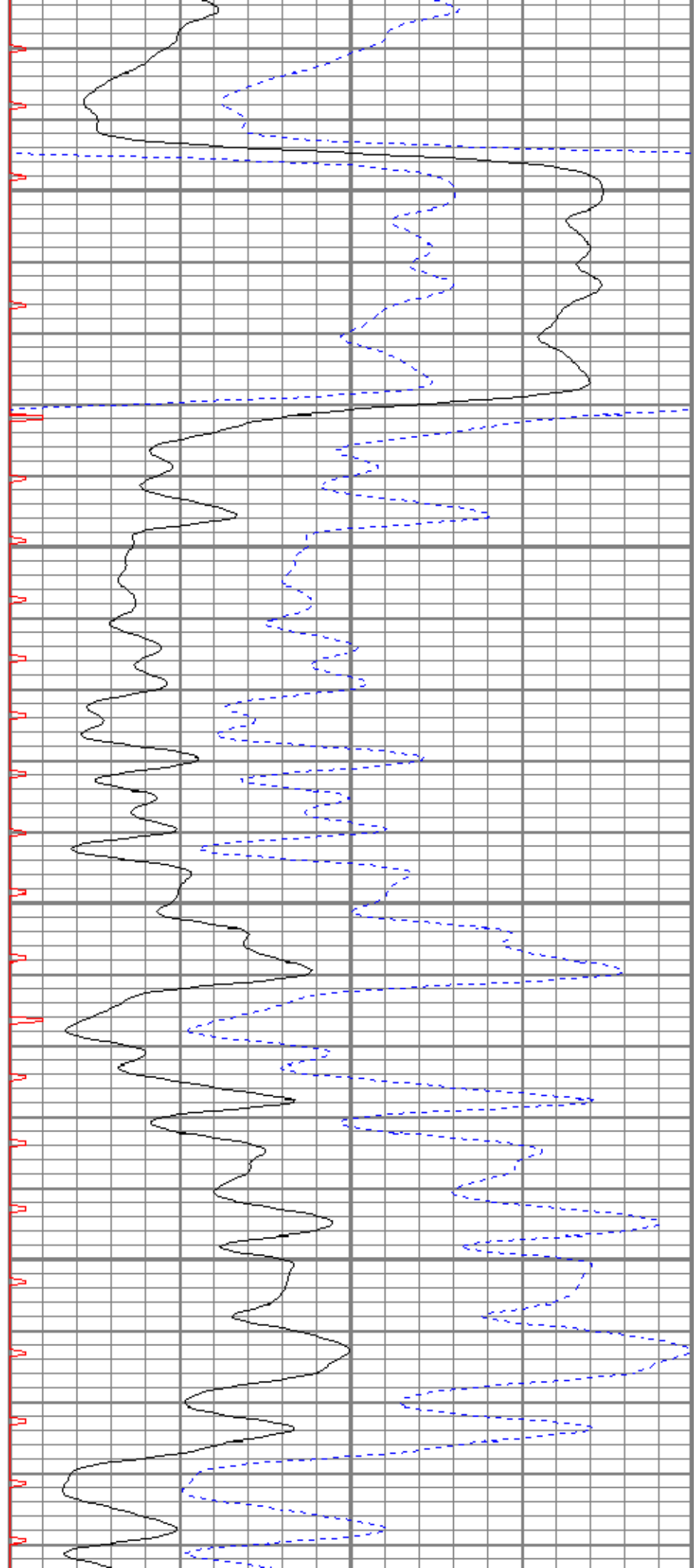


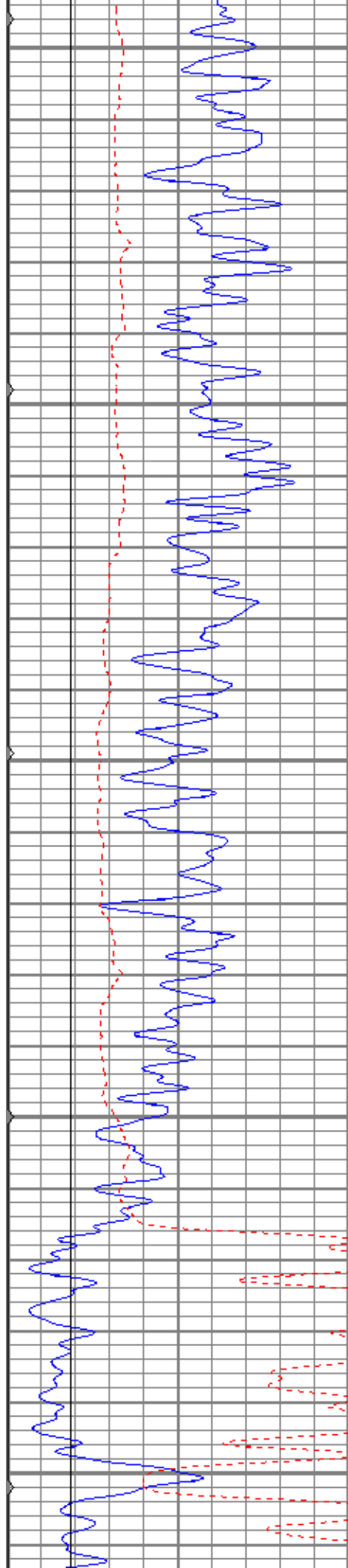
1050

1100

1150

1200





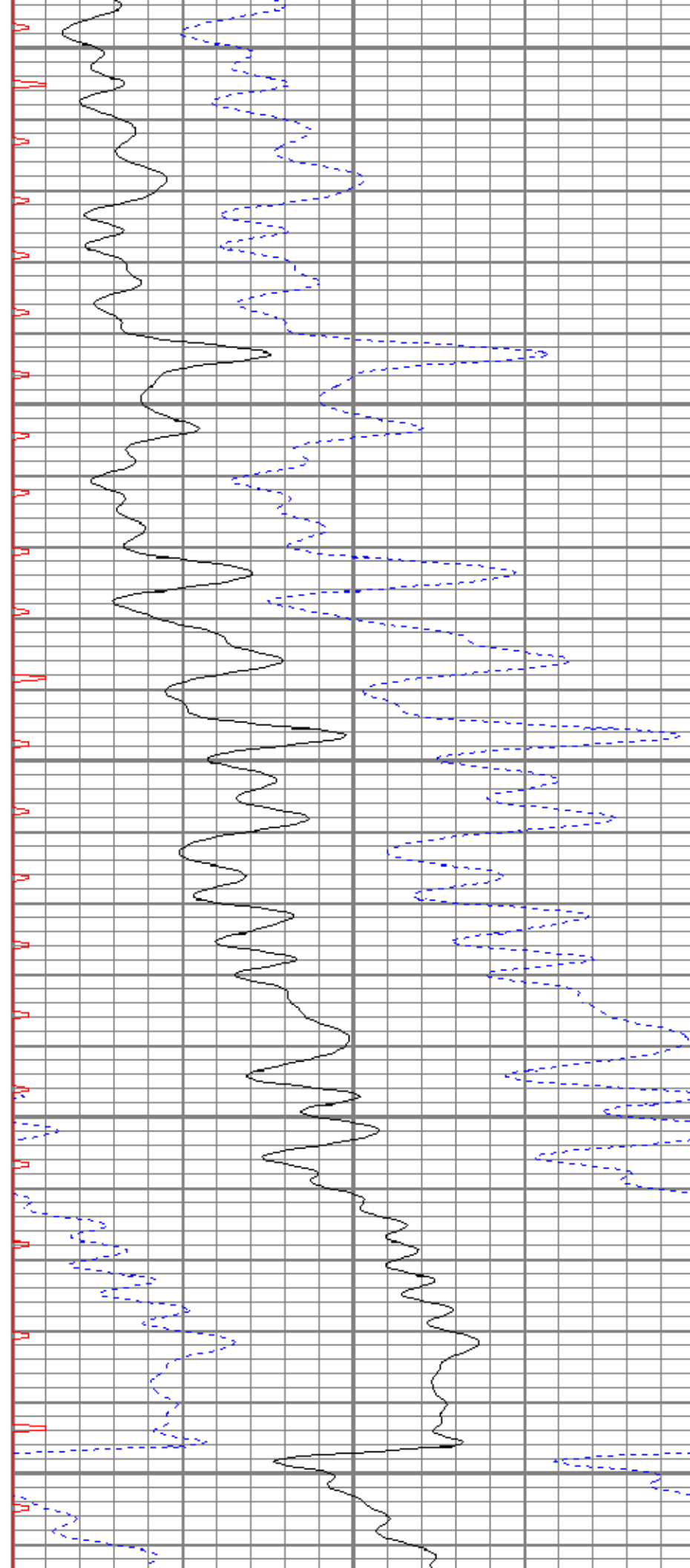
1250

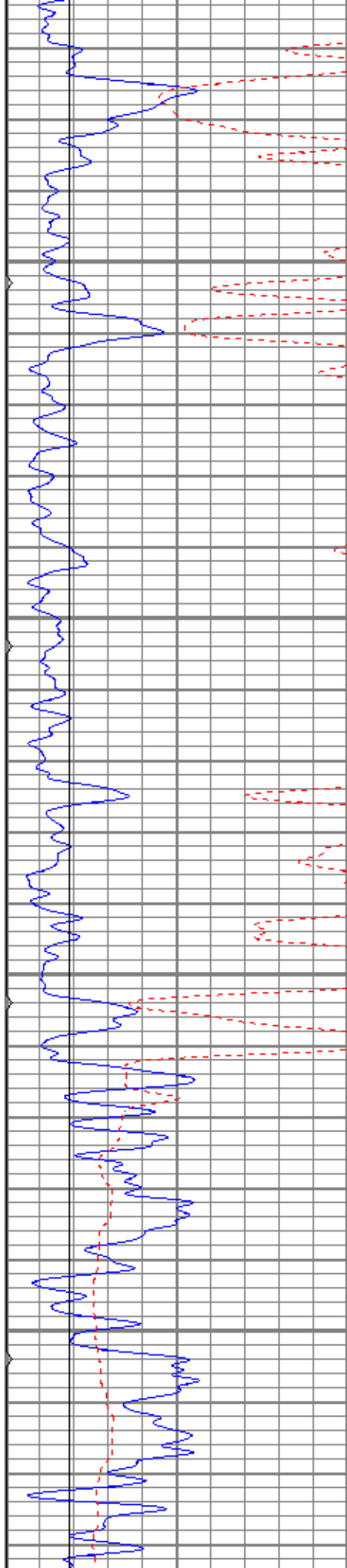
1300

1350

1400

1450



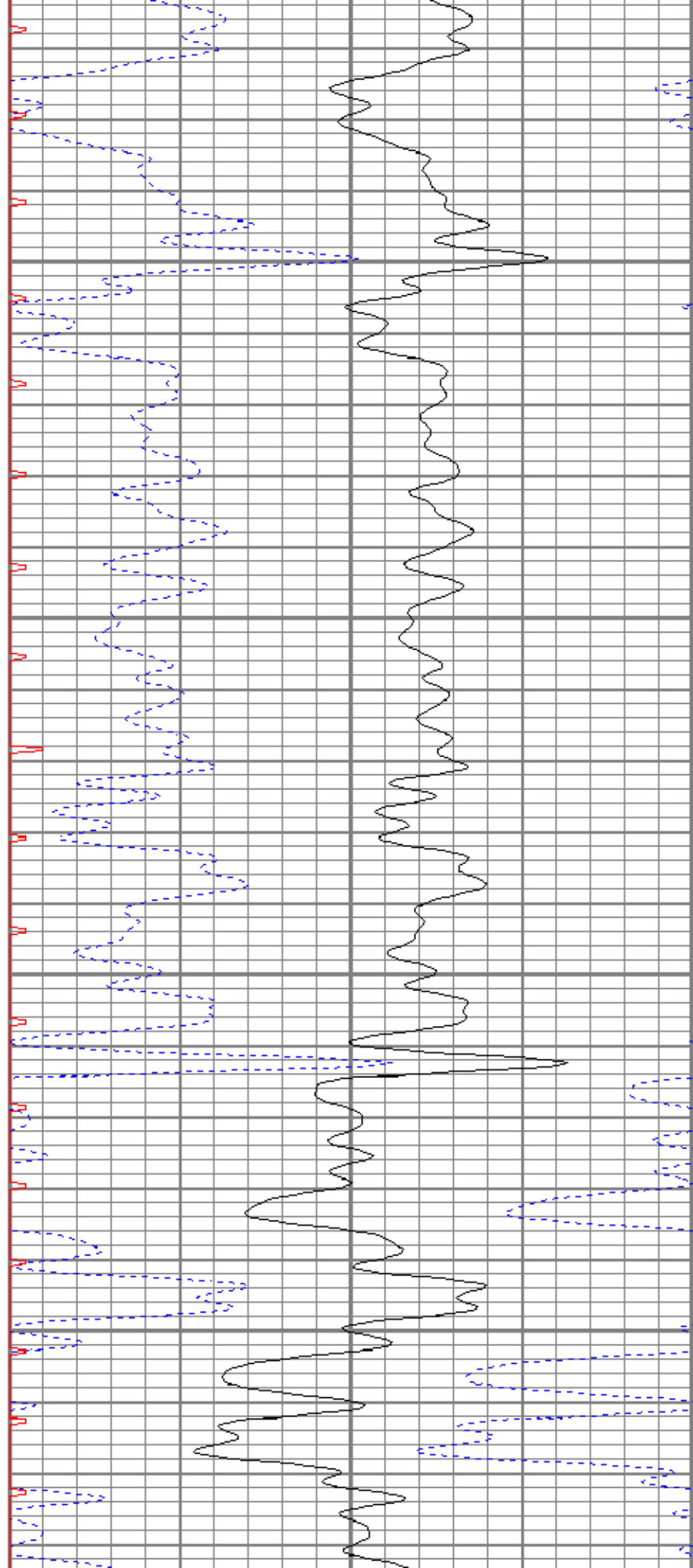


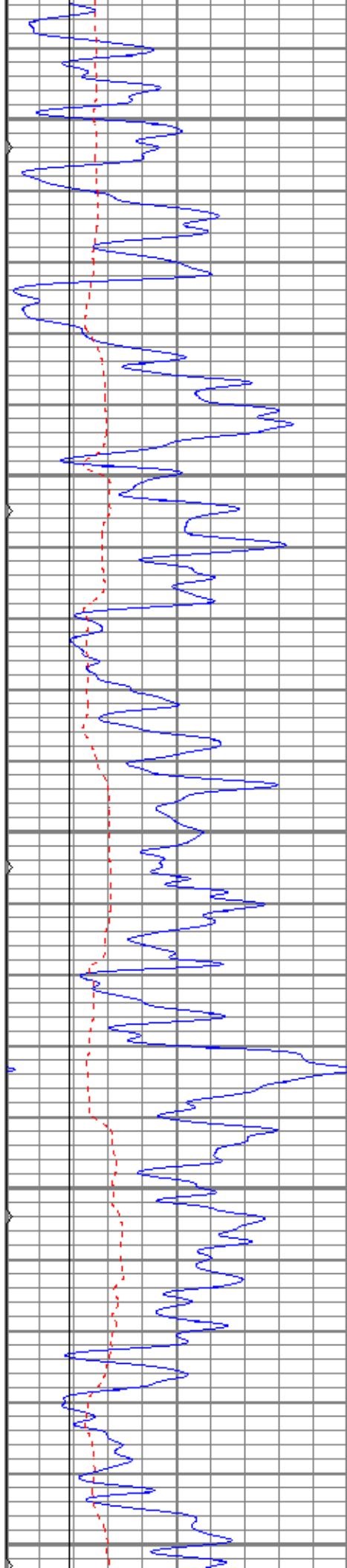
1500

1550

1600

1650





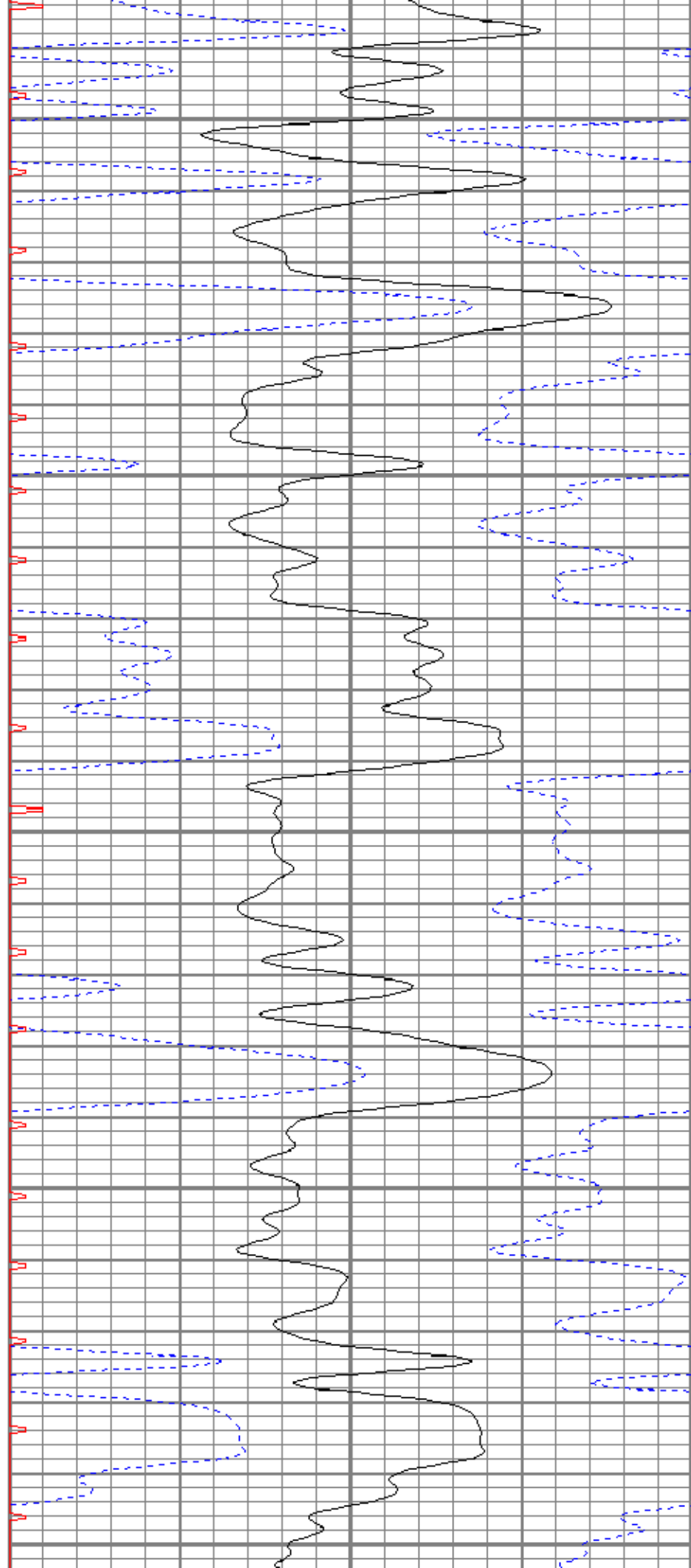
1700

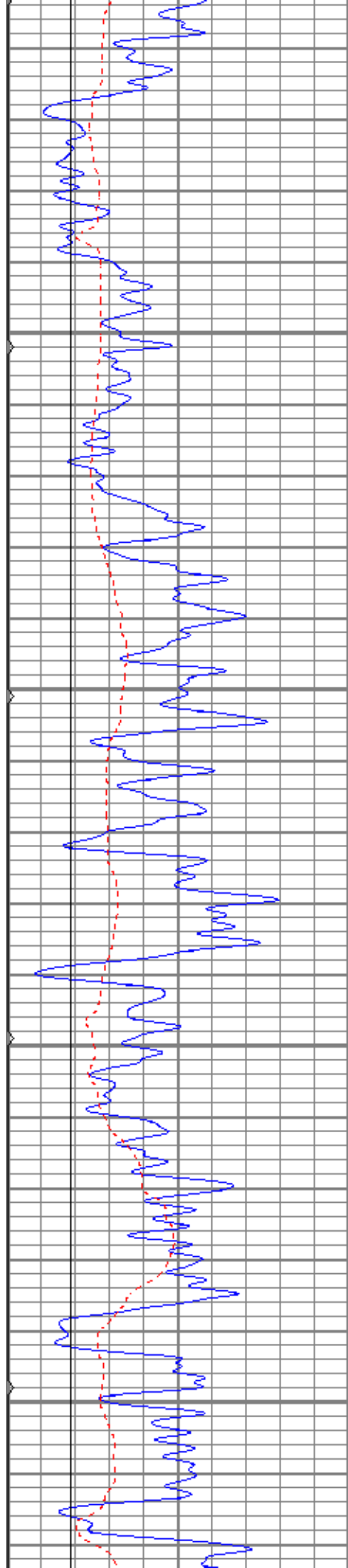
1750

1800

1850

1900



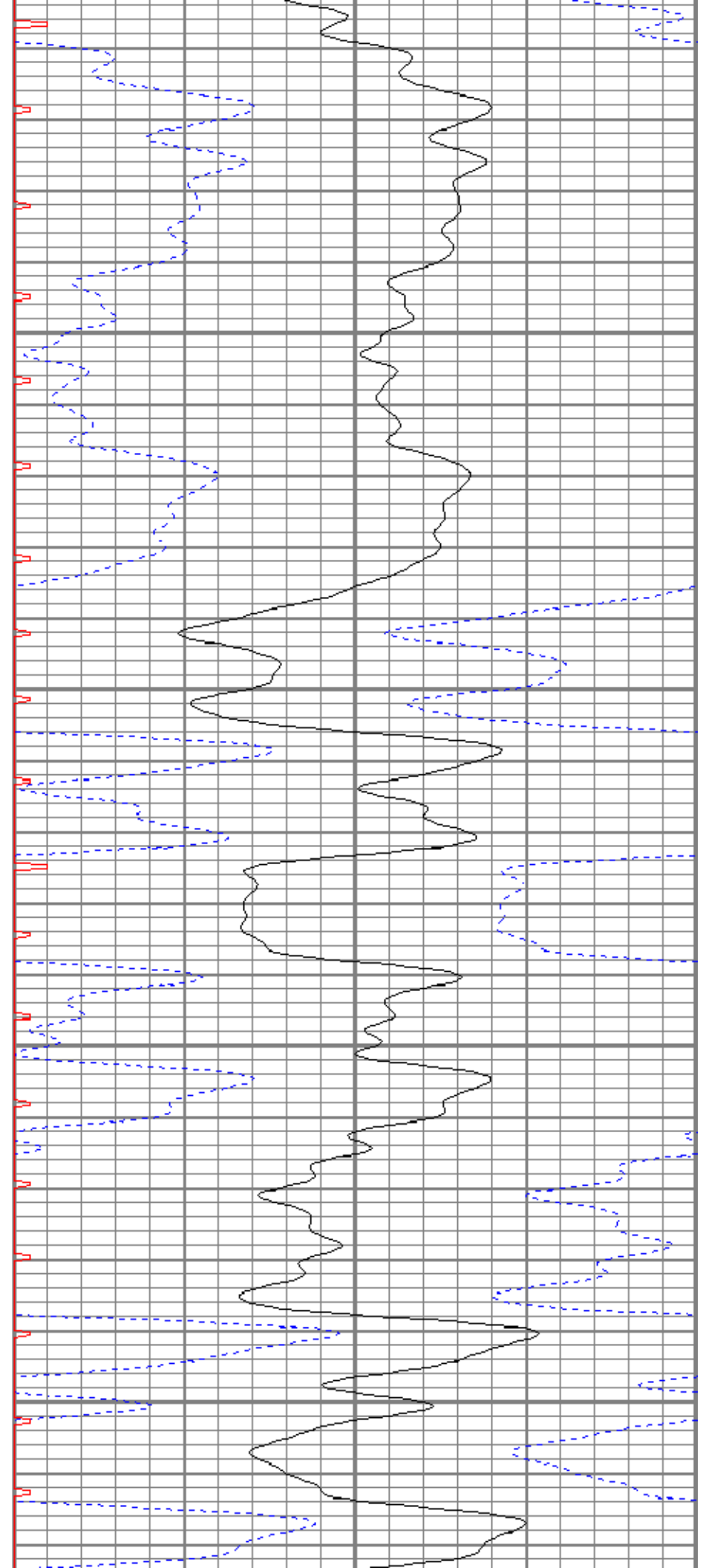


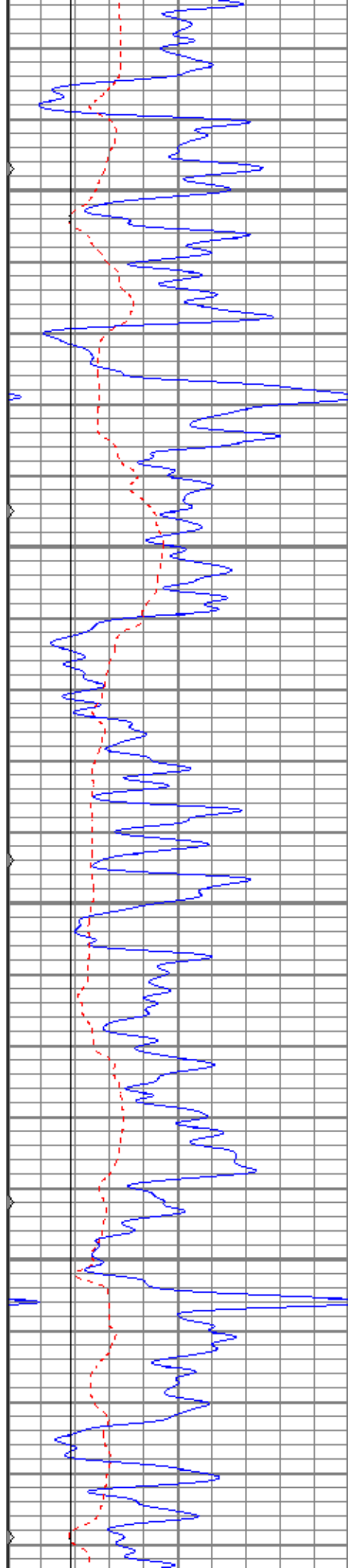
1950

2000

2050

2100



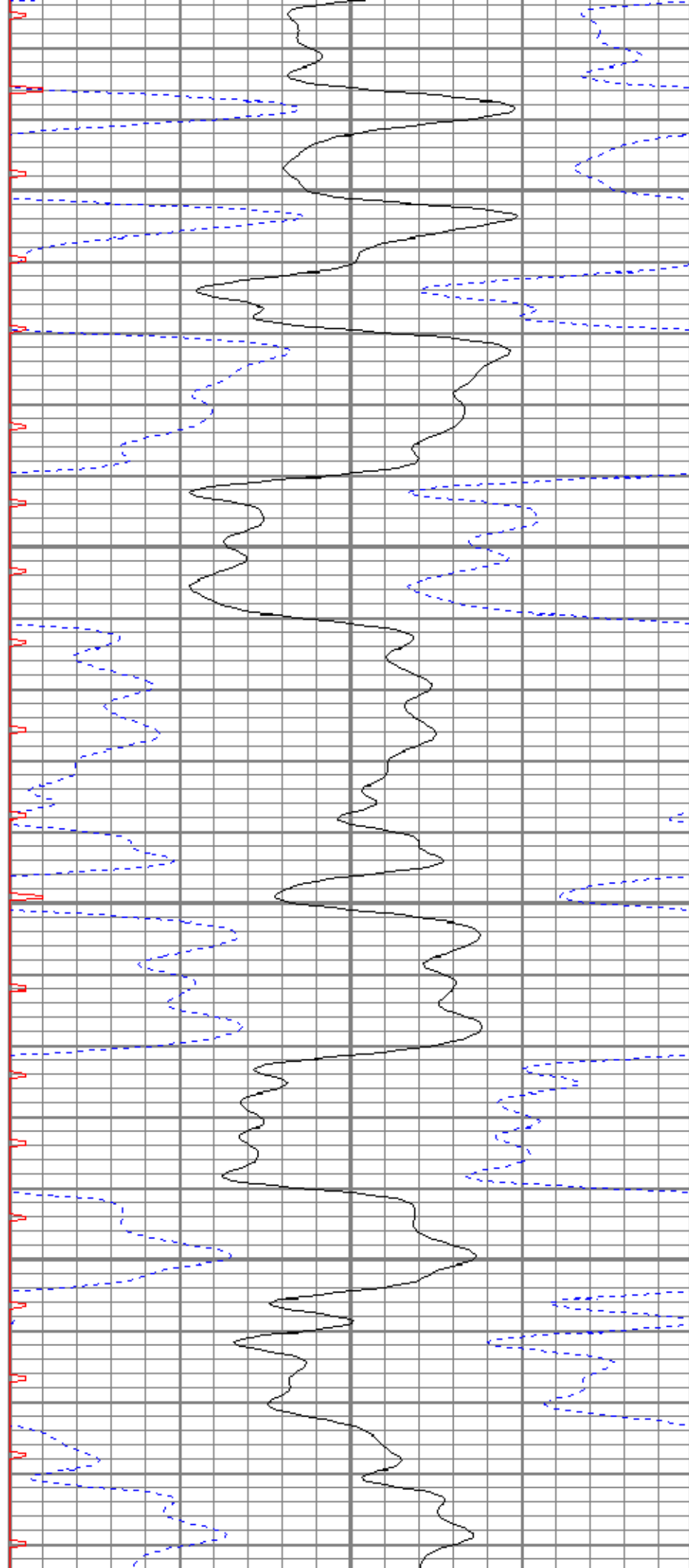


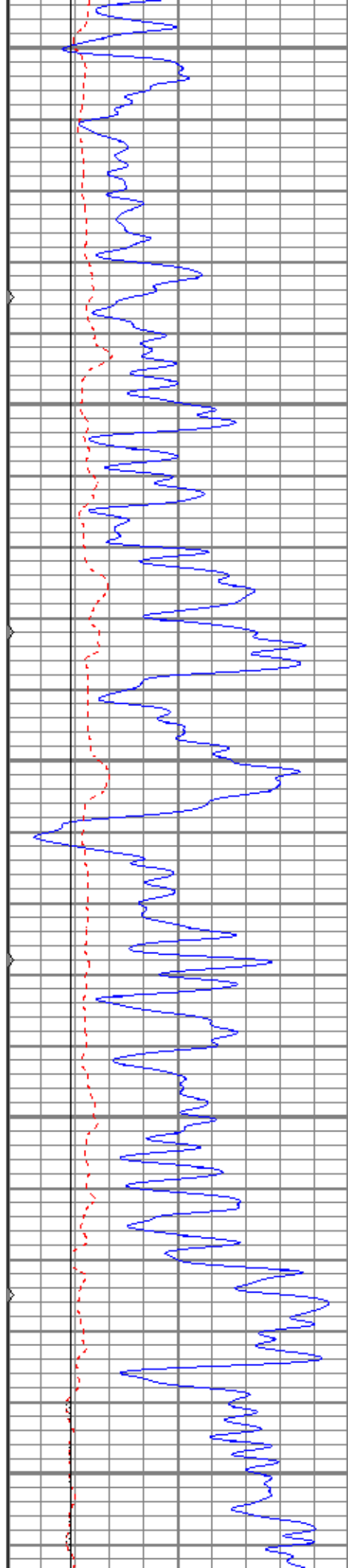
2150

2200

2250

2300





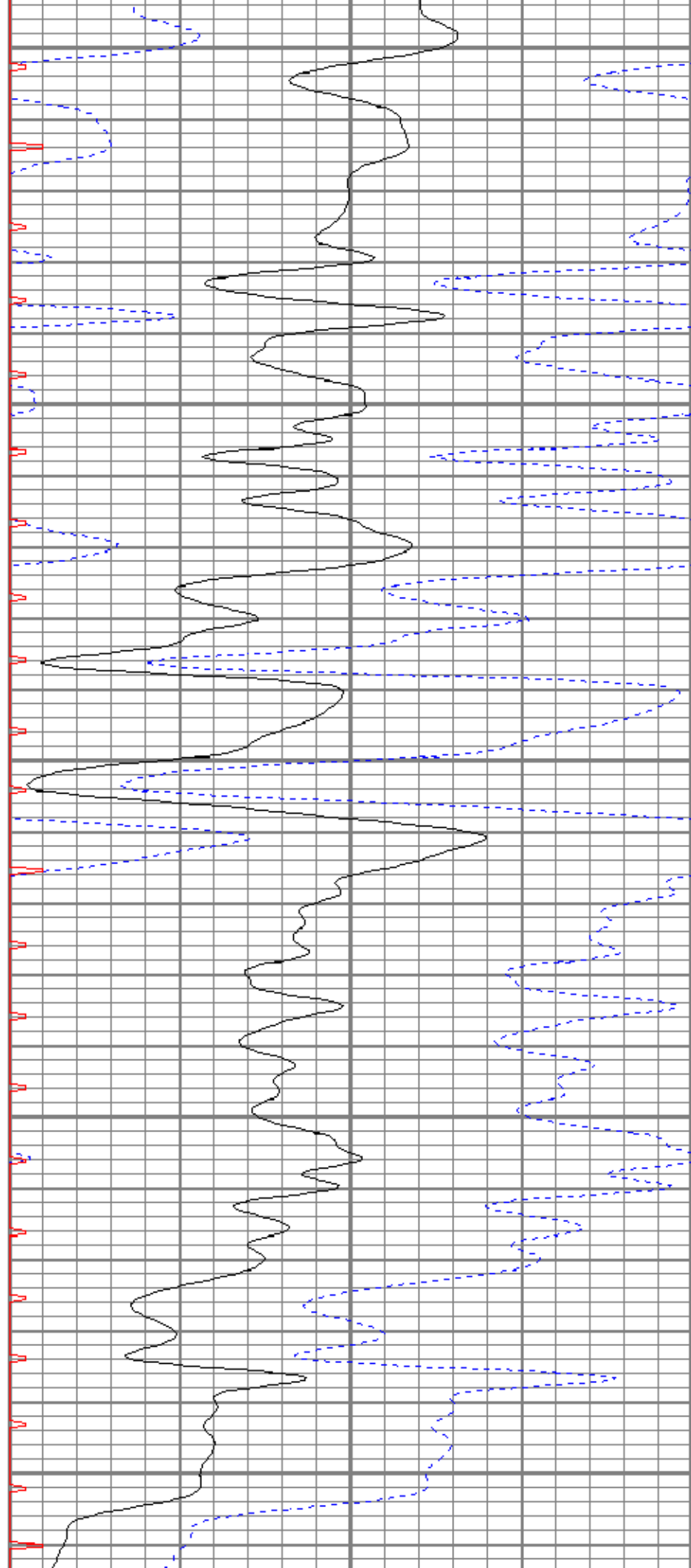
2350

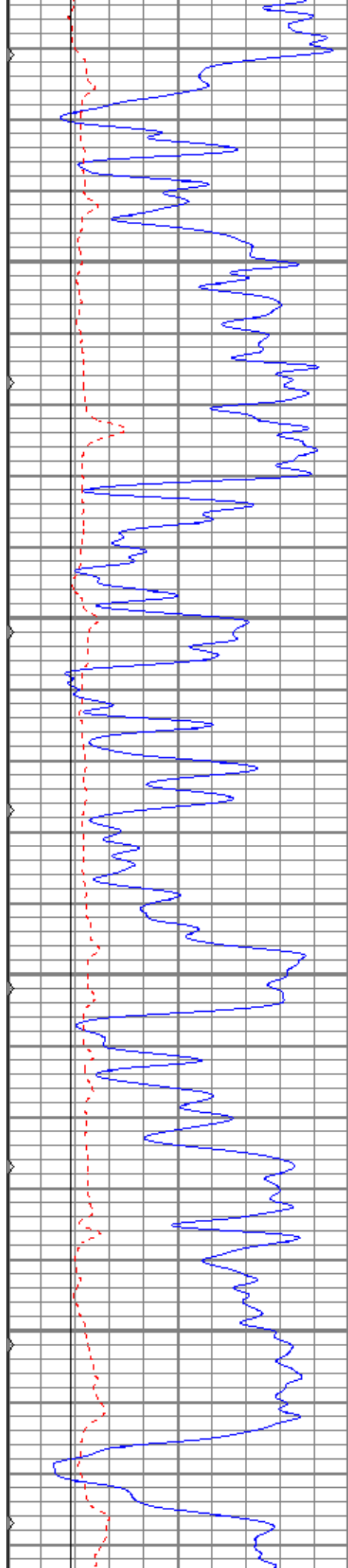
2400

2450

2500

2550



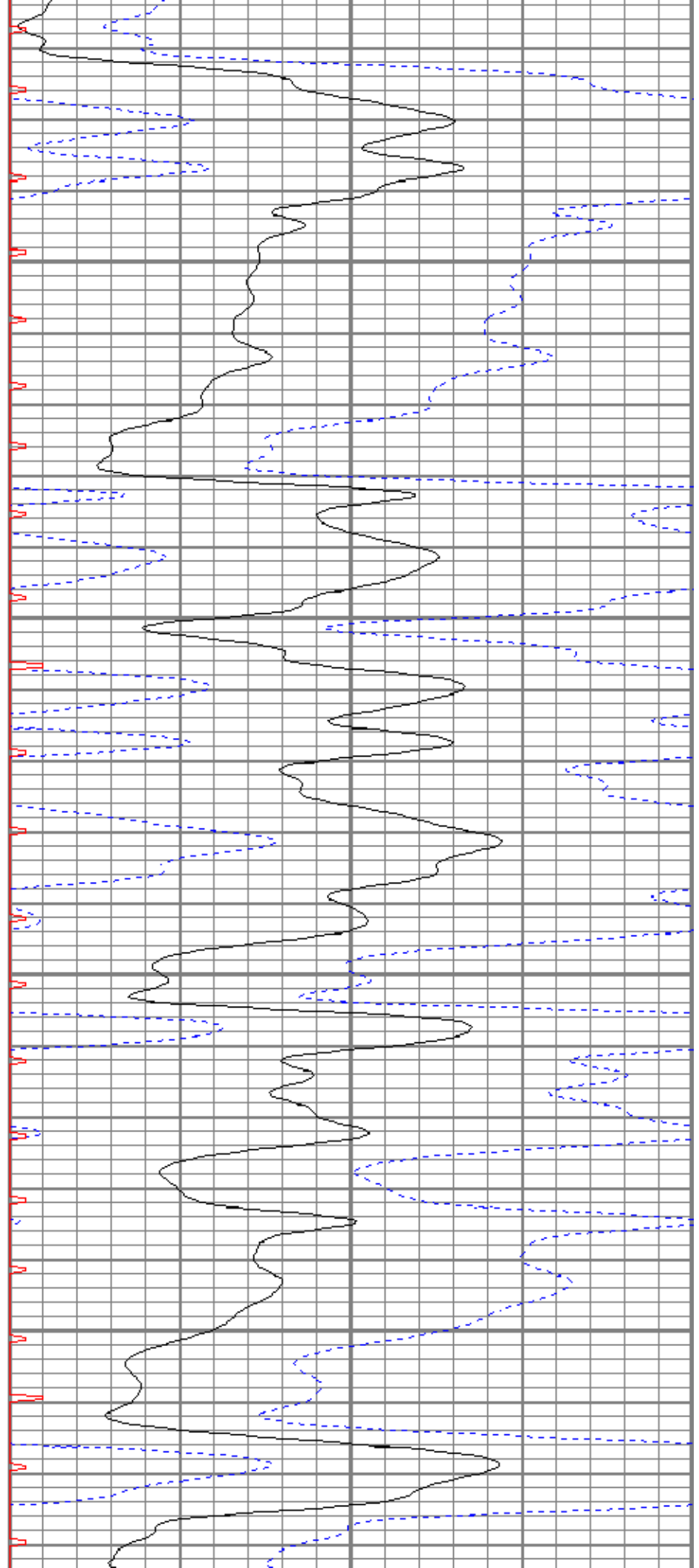


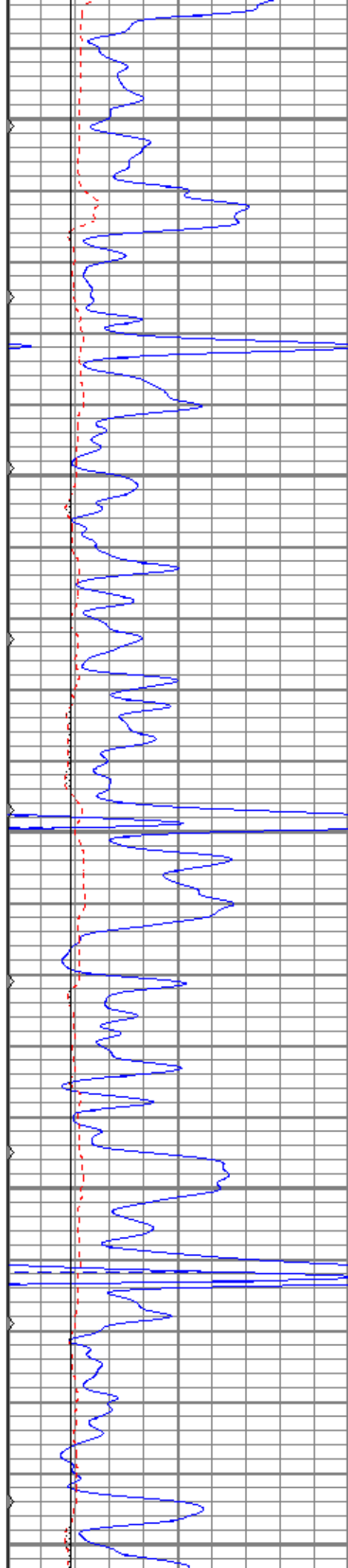
2600

2650

2700

2750





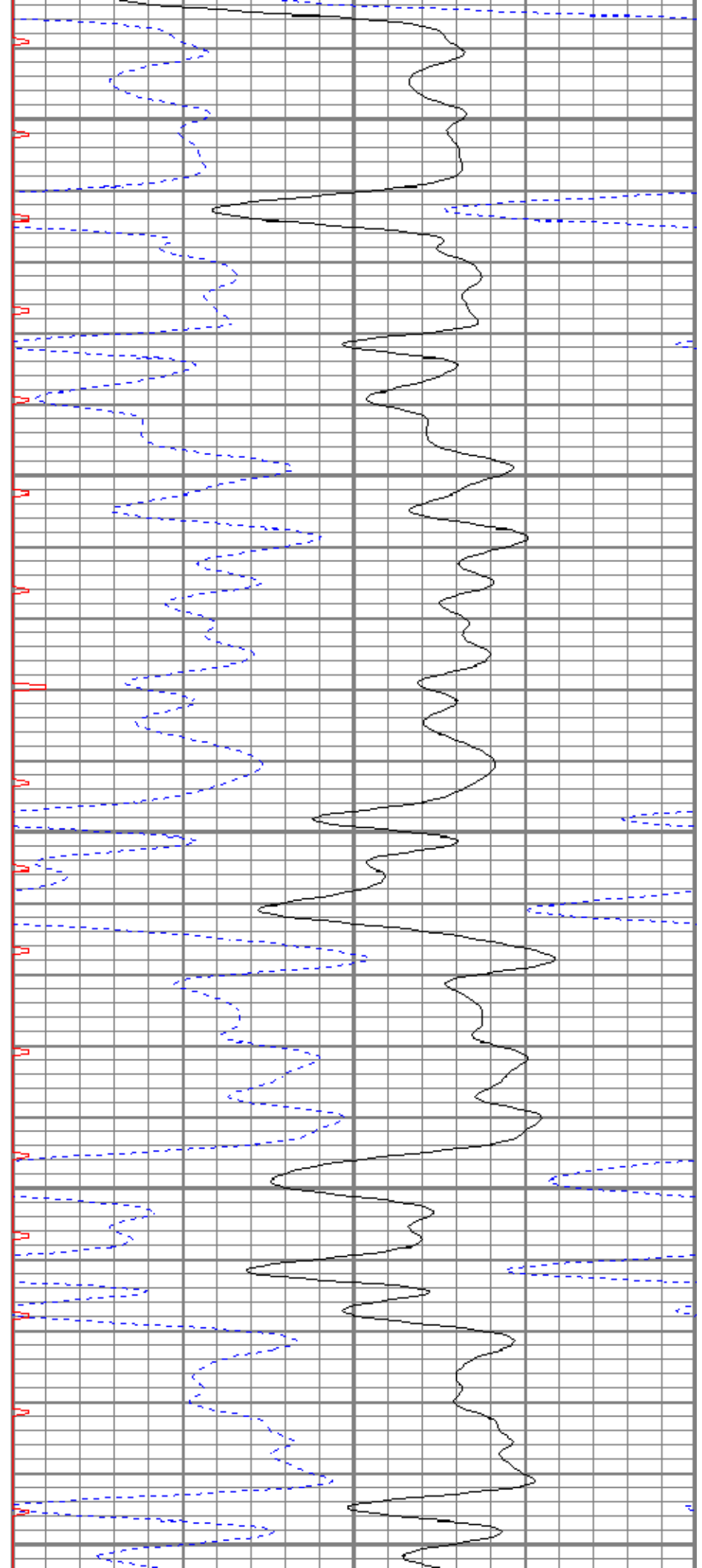
2800

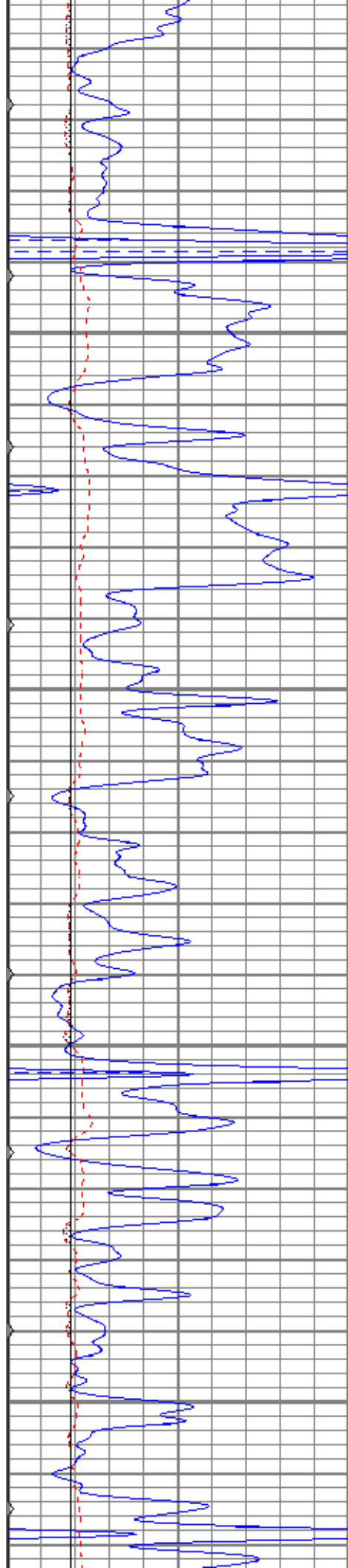
2850

2900

2950

3000



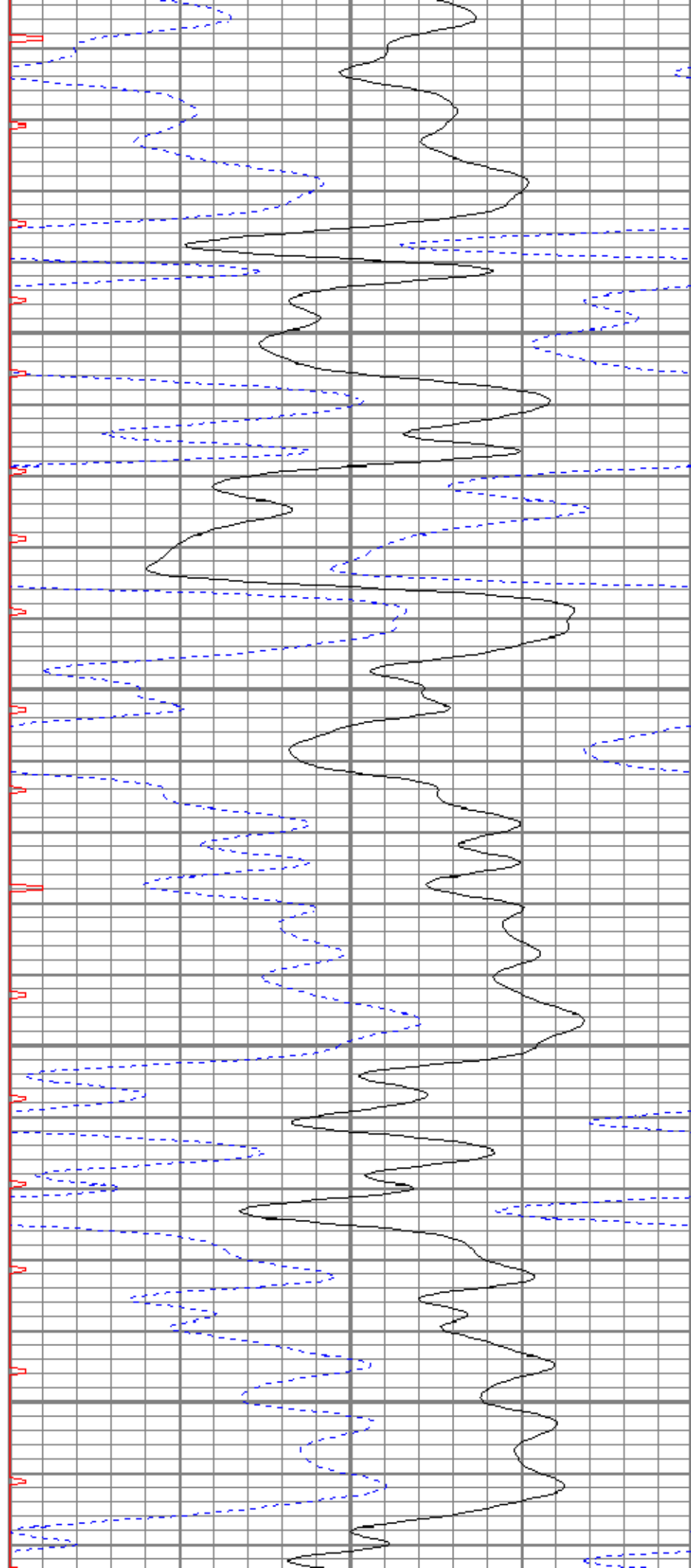


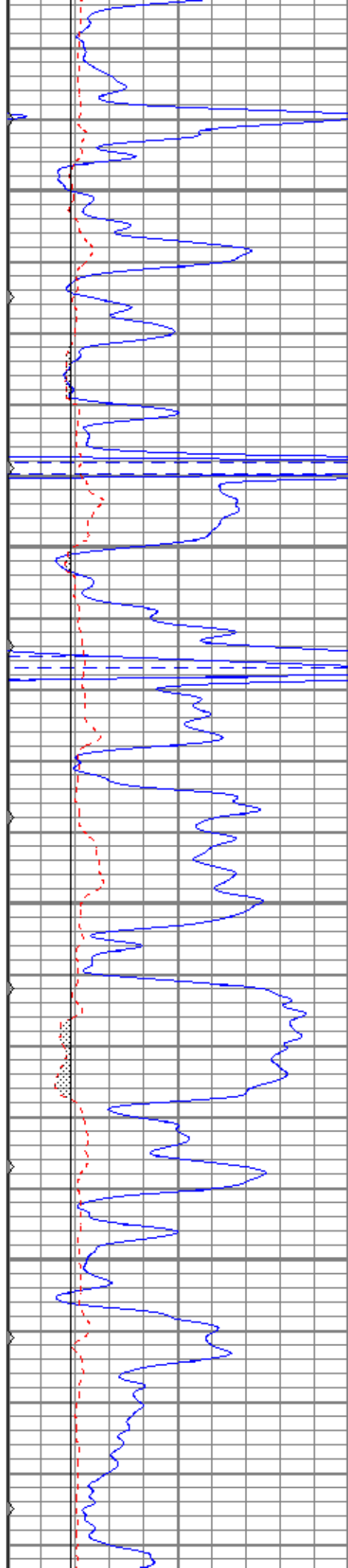
3050

3100

3150

3200



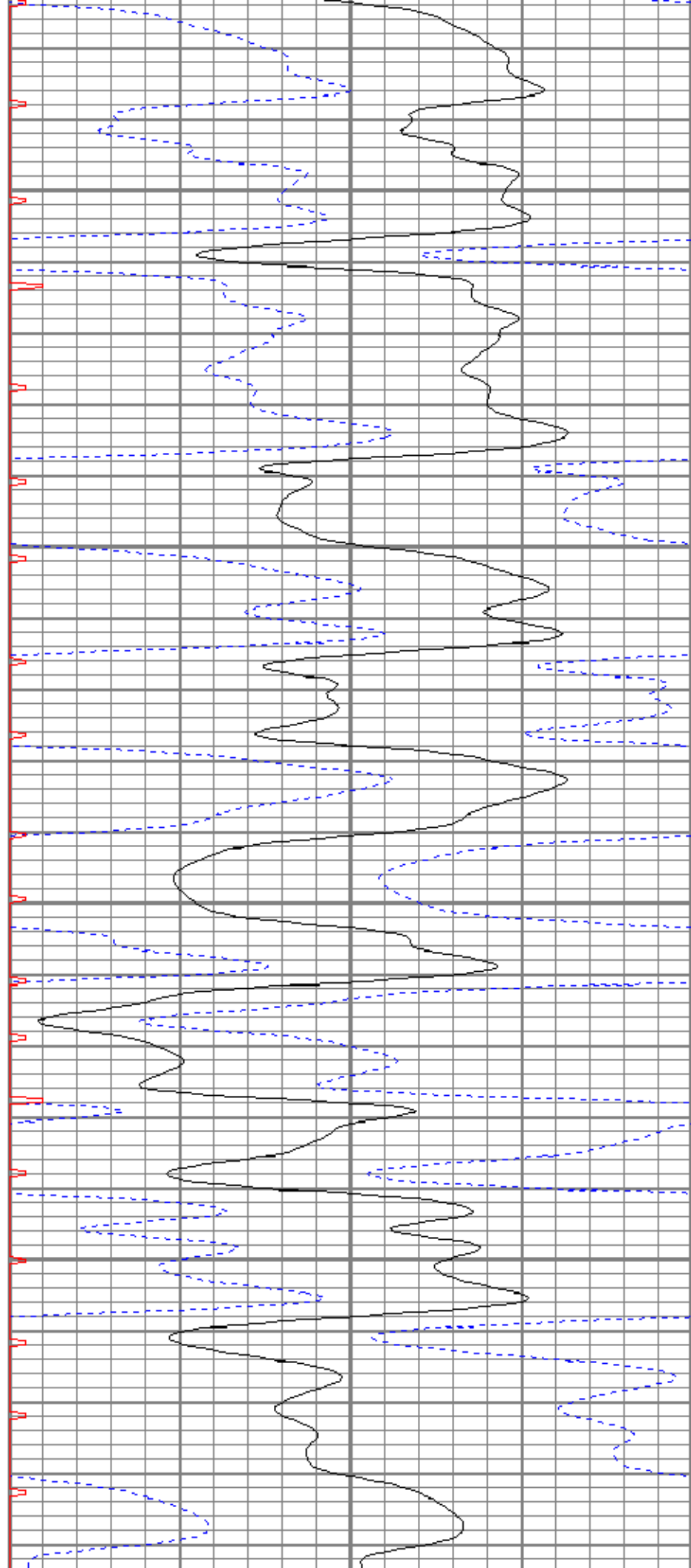


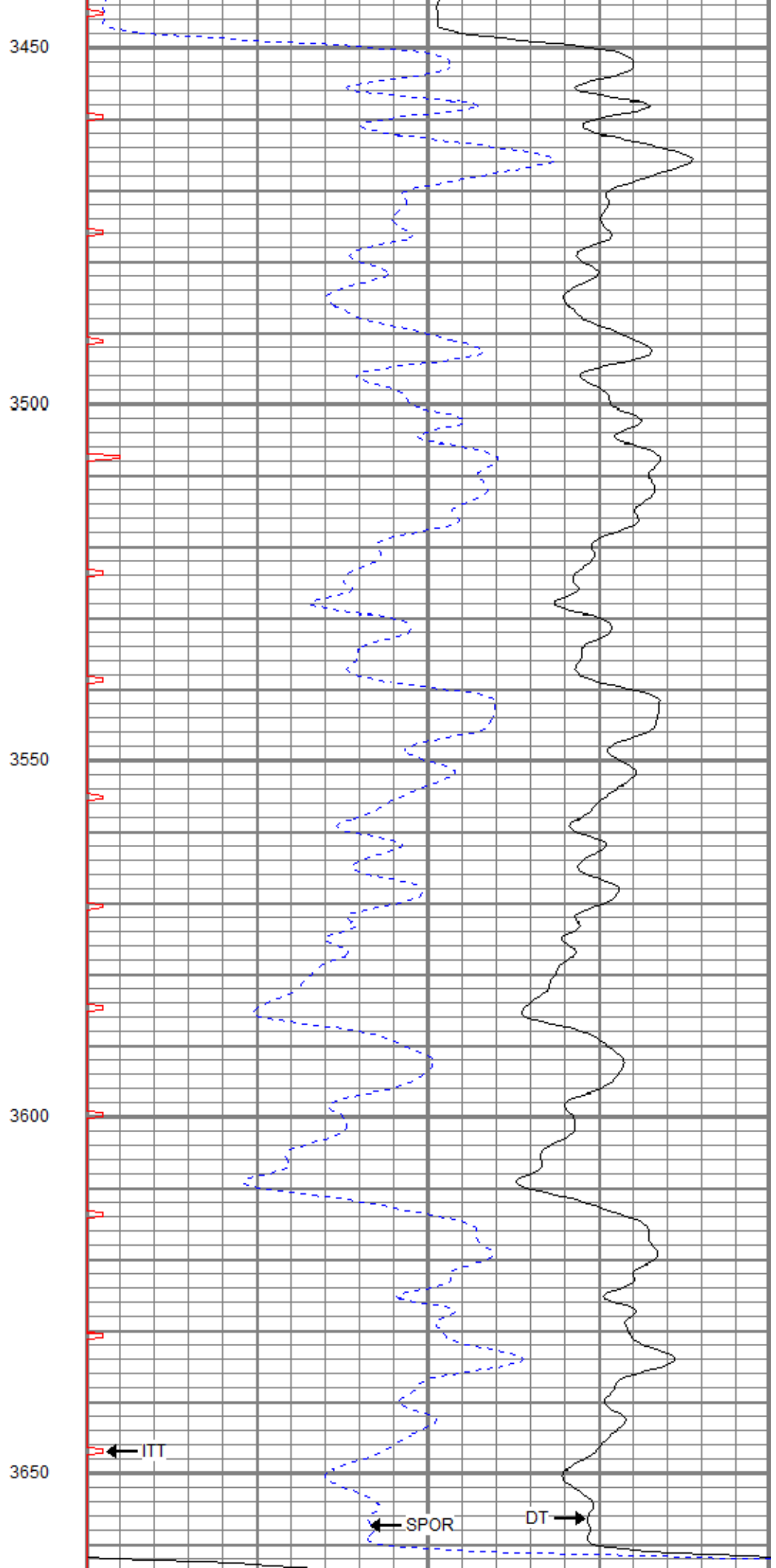
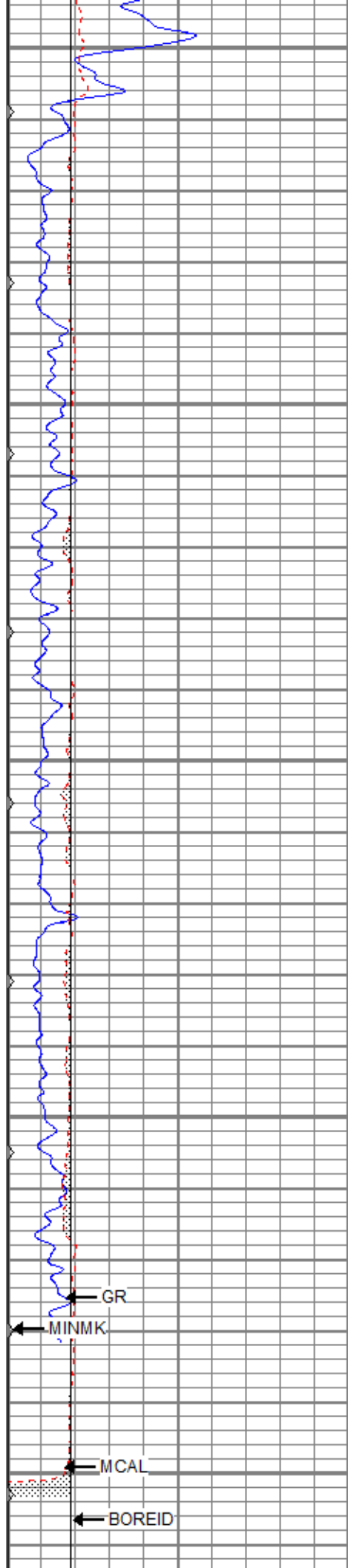
3250

3300

3350

3400





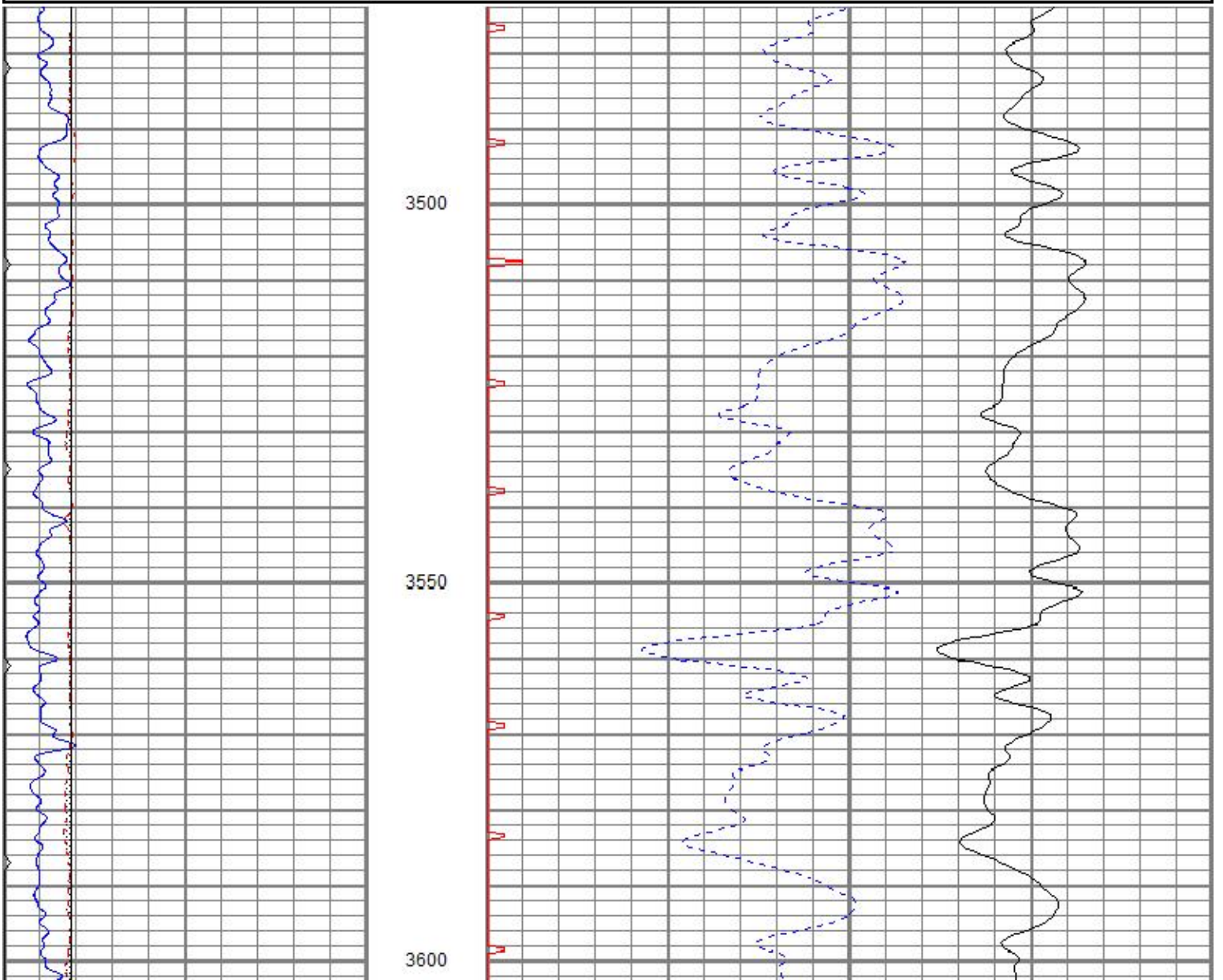
0	GR (GAPI)	150	140	DT (usec/ft)	40
6	MCAL (in)	16	30	SPOR (pu)	-10
6	BOREID (in)	16	0	ITT (msec)	20
0	MINMK	50			

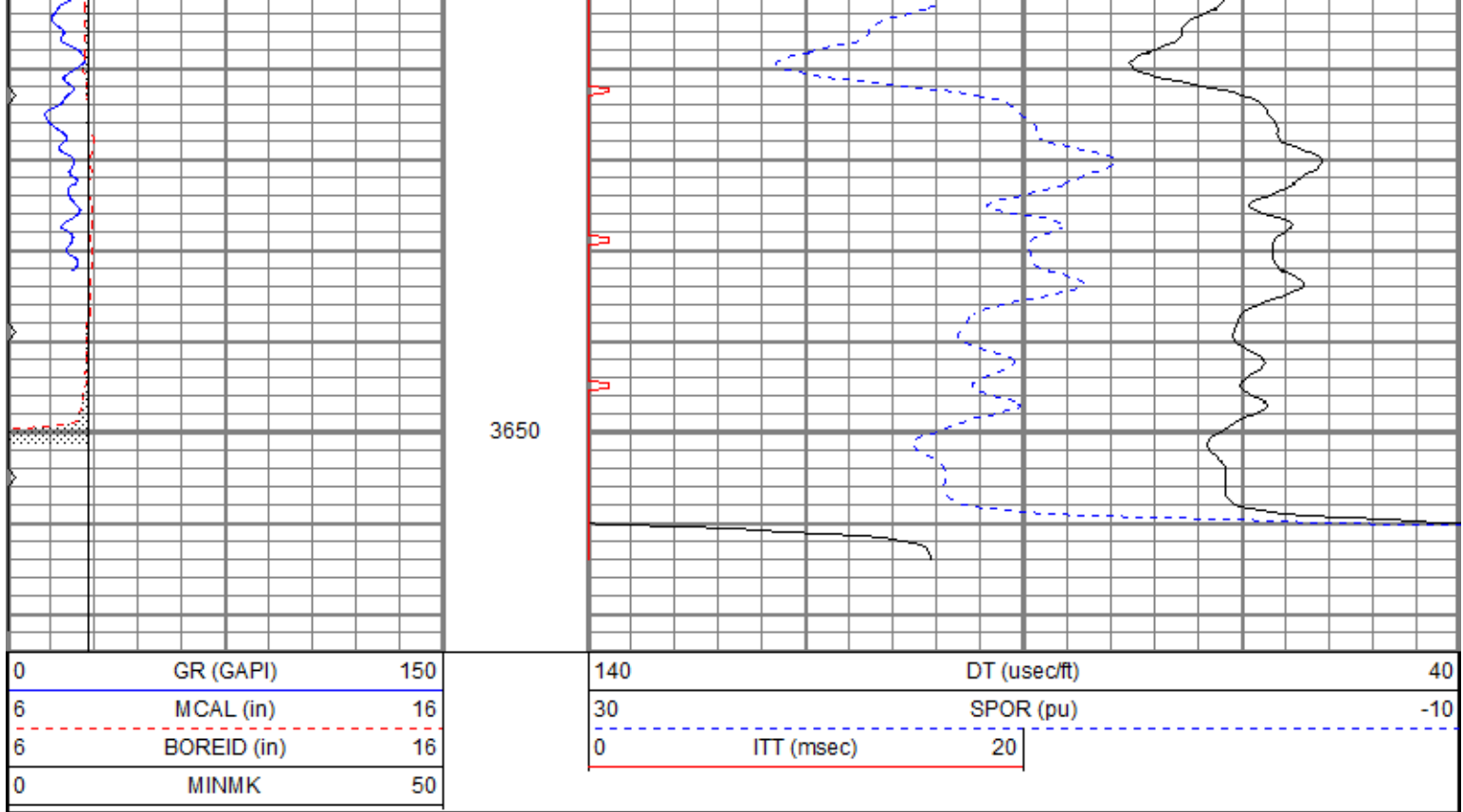


REPEAT SECTION

Database File brexlebow#11oh.db
 Dataset Pathname pass6
 Presentation Format kbcs
 Dataset Creation Thu Dec 06 11:02:30 2018
 Charted by Depth in Feet scaled 1:240

0	GR (GAPI)	150	140	DT (usec/ft)	40
6	MCAL (in)	16	30	SPOR (pu)	-10
6	BOREID (in)	16	0	ITT (msec)	20
0	MINMK	50			





Calibration Report

Database File brexlebow#11oh.db
 Dataset Pathname pass7
 Dataset Creation Thu Dec 06 11:17:36 2018

Microlog Calibration Report

Serial-Model: 9151-Gerhart
 Performed: Thu Dec 06 11:01:02 2018

	Readings				References		Results	
	Zero	Cal			Zero	Cal	m	b
Normal	-0.0180	0.4763	V	0.0000	10.0000	Ohm-m	20.2289	0.3647
Inverse	-0.0413	0.6242	V	0.0000	10.0000	Ohm-m	15.0257	0.6205
Caliper	1.0212	2.0456	V	8.1000	15.0000	in	6.7356	1.2215

Sensor	Offset (ft)	Schematic	Description	Length (ft)	O.D. (in)	Weight (lb)
			CHD-STD	0.50	1.69	1.00
MCAL	22.04		ML-Gerhart (9151) Gerhart Micro	9.46	4.00	125.00
MI	22.04					
MN	22.04					
WVF4	14.25		SLT-G (372) Sonic	15.71	3.50	250.00
WVF3	13.25					
WVF2	10.25					
WVF1	9.25		CENT-OHlong Open Hole long Centralizer	4.50	3.50	50.00

Dataset: brexlebow#11oh.db: field/well/run1/pass7
 Total length: 30.17 ft
 Total weight: 426.00 lb
 O.D.: 4.00 in